

## News

- ◆ Inquiring photographer asks "What would you do on your last day on earth?" page 3
- ◆ Debate team continues success page 4

## Sports

- ◆ Norman Hardracker named sports figure of the week page 5
- ◆ Up and coming lists this weeks events page 5

## Entertainment

- ◆ Folk duo showcase latest release at New Music Night page 7
- ◆ Dave Barry goes to Japan page 9

# The Anchor

November 16, 1992

Rhode Island College's weekly student newspaper since 1928

Free

## College to discuss creating a 'smoke free' campus Open meeting scheduled for Wednesday

In order to provide for college-wide participation in addressing the smoke-free campus issue and to assist the Smoke-Free Campus Implementation Committee with the development and implementation of a policy, the committee will hold an open hearing on Wednesday, November 18, 1992 in the Kelly board room in Roberts Hall from 12:30 until 2:00 p.m.

The committee invites all members of the campus community to bring both their ideas and enthusiasm.

On August 27, 1992 at the Opening Conference of the 1992-93 academic year, President John Nazarian announced that he would appoint a committee to address the implementation of a Smoke-Free Campus Policy. The com-

mittee has been appointed and held three meetings. It was decided to recommend to the President that a smoke-free campus policy be formulated to be effective on Sunday, February 14, 1993.

Anyone who wishes to speak before the committee is asked to contact Ms. Janice Santucci, secretary of the Smoke-Free Campus Implementation Committee, at 456-8443. She will schedule a time for people to address the committee. The committee welcomes written statements prior to the hearing date for anyone who cannot schedule a time for an appearance on November 18.

Statements can be addressed to Gordon Sundberg, chair Smoke-Free Implementation Committee, Office of Personal Services, Room 124, Roberts Hall.

## Workaholicism among students is on the rise

(CPS)-Whether it's slaving over books or at a part-time job, college students risk burnout with late hours and hectic schedules in the race to get a diploma.

Workaholicism wears many faces in the college population: It shows up in an overachieving, perfectionist "superstudent," a cash-strapped scholar juggling a job and schoolwork, or a college athlete who squeezes study between hours of practice, say psychologists who counsel stressed-out students.

"There is a sense, nationwide, that mental health staffs are seeing more distressed college students," said Phillip Meilman, director of counseling at the College of William and Mary in Virginia and author of *Beating the College Blues*.

"There is no hard data, however, but there is a subjective impression that there is a higher level of dysfunction, that there are more serious problems," Meilman said, noting that substance abuse is often an attempt to regulate stress.

The average college experience today is no longer the easy, un-rushed transition into adulthood that it used to be.

"The stakes have been raised to the point that everyone has to do more to arrive at the same place, and that becomes stressful and unhealthy," Meilman said.

Mental health experts agree that economic problems are taking a toll on students, and many are seeking help at university counseling centers to cope with the complexities of their lives.

"The increasing cost of college, the problematic economy, coupled with students placing unrealistic demands on themselves, are having an impact on students and how much they can engage in the learning process," said Alan Berkowitz, director of the counseling center at Hobart and William Smith Colleges in New York.

Students are working more hours at part-time and full-time jobs and are getting paid less for their efforts. Educators complain that bleary-eyed students, struggling to pay rent and tuition, often put academics on the back burner.

However, colleges and universities are becoming more enlightened about stress.

## Republicans get rocked by voter registration drives

By Deborah Kane Mitchell  
Special Correspondent

(CPS) This election year, the MTV generation got out the vote.

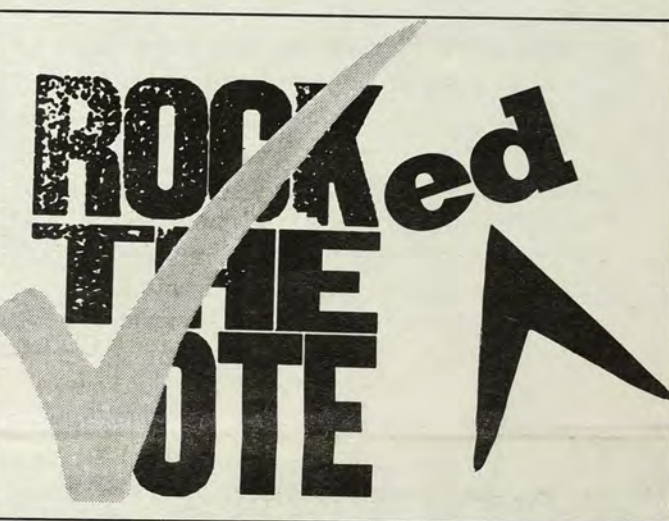
The Disposable Heroes of Hiphoprisy challenged students to "kick some butt at the polls," and rappers like Marky Mark & the Funky Bunch called for a political revolution across college campuses and universities nationwide.

The musicians' message was spread at Blockbuster Videos, Burger Kings and Pizza Huts, at U2, Guns, 'N Roses and Lollapalooza concerts, as part of hard-rocking pitch to get young voters to the polls.

It appears to have worked. Exit polls and music industry surveys show 18- to 21 year-olds responded overwhelmingly, turning out to register, and then to vote, in droves.

If the predictions are right, these young voter may have reversed a 20 year trend that began in 1972 when 18-years-olds got the right to vote.

Since then, Census Bureau statistics show a dramatic decline in registration and turnout among young voters. In 1972, 58 per-



cent of 18- to 21 years-olds registered and 46 percent went to the polls. By 1988, the numbers had dropped steadily, with 45 percent of eligible young voters registering and only 33 percent voting.

"Young voters probably didn't turn out in record numbers for the '92 elections, but the turnout was definitely much higher than it was in 1988," said Curtis Gans, director of the Washington-based Committee for the Study of the American Electorate.

According to an exit poll by Voter Research & Surveys,

Clinton won 48 percent of first-time voters in the 18-24 age group, compared with 30 percent of Bush. In 1988, exit polls showed that Bush carried voters under the age of 30 by a 63-37 margin. But, in 1992, Clinton's showing was 10 points better in that same under-30 age group.

The final numbers are not in yet, but Gans said turnout was especially strong among college students in the 18-21 age group.

The high voter turnout has

See **ROCKED**, page 3

## Presidential changeover reflected in post election numbers

by Hector Galvan  
Anchor Staff

Under watchword "change," young voters, among them students and minorities, gave a triumphant win to Democrat Bill Clinton.

At the same time, people of lesser incomes, those the most hit by the current economical situation, together with the middle class, helped to overthrow the Republican administration.

These aspects can be discussed using statistics compiled for the New York Times.

For example: the population

between 18-29 years old that voted for the Democratic candidate in 1976 (Carter, 51%) changed in 1984 and favored the Republican candidate (59%). But in 1992, they voted for Clinton, the Democratic candidate (44% vs. 34%).

While the majority of white people divided its votes between Bush and Perot, Clinton alone had 39%. On the other hand, the blacks and Hispanic minorities favored Clinton. He received 82% of black vote. Bush only received 11% and Perot 7%. Clinton received 62% from Hispanics; Bush

25% and Perot 14%.

Blacks hold 6 percent of the nation's state legislature seats this year, up from 5 percent in 1981. Hispanics legislators hold 2 percent of the seats this year.

The votes of students appear in these in these categories: high school students gave Clinton 43% of the vote, 36% went to Bush, and 20% to Perot. Voters who said they had some college education preferred Clinton (42%) and those who are college graduates or more leaned towards

See **NUMBERS**, page 3



## Career Development Center

Craig-Lee 054 • (401) 456-8031

Resume Expert is here and available  
at the Campus Store for \$25.00

Resume Expert Plus training sessions  
Tuesday, November 24,  
12 noon-1:00 p.m. Gaige 168

The Career Development Center also has "drop in clinics" for  
individual questions about Resume expert and resume  
preparation on these dates in Craig-Lee 131:

Wednesday, November 18 12:30 - 2:00 pm  
Friday, December 4 2:00 - 4:00 pm

### Career workshops

Resume: Friday, November 20,  
10:30 a.m. - 11:30 a.m.

(Contact Sharon Mazyck, Coordinator of Career  
Development Programs, at x8031)

Interview: Wednesday, November 18,  
12:30 p.m. - 2:00 p.m. Craig Lee 051

### Attention seniors: Senior orientations

The Career Development Center presents two  
workshops designed to give seniors an overview of  
Office Services and a preparation of recruiting.  
Contact the office for more information.

## Road work to watch for this week

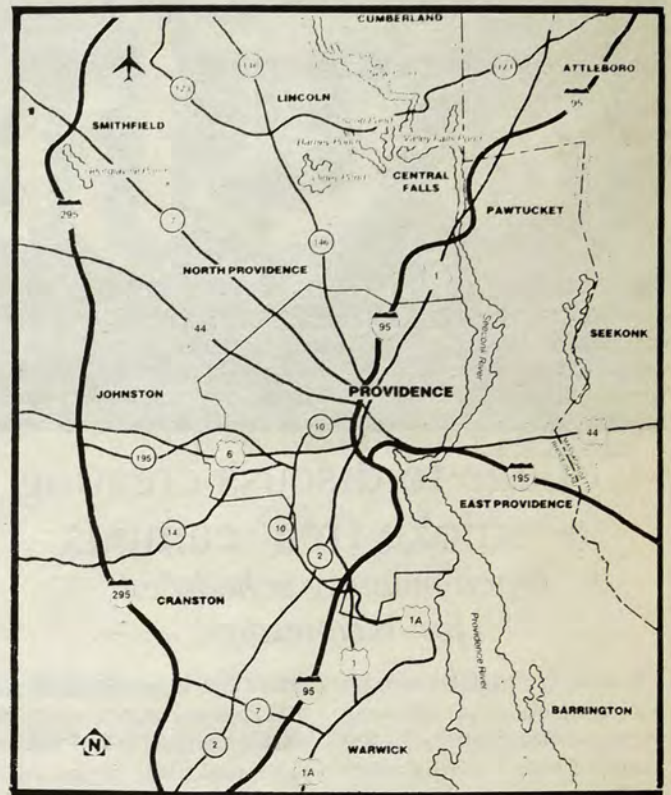
Monday: Charles Street,  
Providence, paving on and off  
ramps to I-95. Weather permit-  
ting, one ramp at a time.

Wednesday: I-95 south,  
Providence, Elmwood Avenue  
exit to Route 10 overpass, two  
high speed lanes closed for bridge  
repairs.

Route 146 north ramp to I-295  
south, closed on a 24 hour basis;  
and ramp from I-295 north to  
Route 146 north, closed on a 24  
hour basis, Monday through  
Friday.

I-295 safety improvements,  
Diamond Hill Road at I-295 over-  
pass, one north and one south-  
bound lane closed for bridge re-  
pairs, Monday through Friday.

Promenade Street project, in  
Providence, lane restrictions, be-  
tween 7:00 a.m. to 3:30 p.m.  
Monday through Friday.



Breakneck Hill Road from  
Route 246 to 300' east of  
Breakneck Hill Bridge for bridge  
rehabilitation, Monday through  
Friday. Detour: use Twin River  
Road to 146 to Breakneck Hill  
Road.

The following work takes place  
between 9:00 a.m. and 3:30 p.m.  
unless otherwise noted:

Information provided by the  
Rhode Island Department of  
Transportation.

## Advertisement

**WHY EVERY DOMINO'S  
PIZZA REALLY IS BETTER  
THAN EVER. NOW THERE'S  
EVEN MORE MELTED MOZZARELLA  
UNDER AND OVER HEAPING HELPINGS  
OF YOUR FAVORITE TOPPINGS, ON A  
NEW CRUST THAT'S MORE TASTY AND TENDER.  
MADE FRESH WHEN YOU CALL, DOMINO'S  
PIZZA WILL HAVE YOU CRAVING FOR MORE.**

From Now On, Every Domino's Pizza®  
Is Better Than Ever. Try A Medium With  
All Your Favorite Toppings, Now Only  
\$9<sup>99</sup> Another For Just \$4<sup>00</sup> More.

SUN. - THURS.

11am - 2am

FRI. - SAT.

11am - 3am



**NOBODY  
KNOWS  
LIKE  
DOMINO'S.**  
How You Like Pizza At Home.

**TRY...  
The New  
Dorm Special**

**\$3.97**

PLUS TAX

**MEDIUM CHEESE  
PIZZA**

**861-9800**

**Drivers**

**Needed**

**Apply at**

**19 Fallon Ave**

**Or Call**

**861-9800**



## Inquiring photographer

If the world were going to end tomorrow, what would you do today?



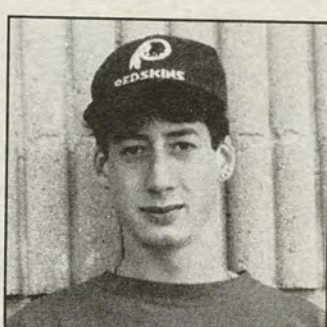
**Ron "C.G." Poirier:** "I don't know, but it has to do with a number of close friends who aren't men."



**Ben Jones:** "Take a hot bath and see what happens afterwards."



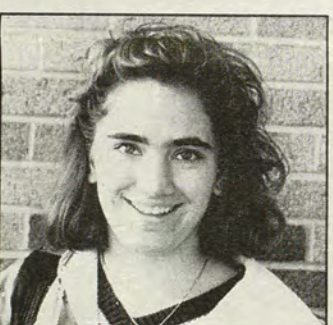
**Elena Romanelli:** "Absolutely nothing."



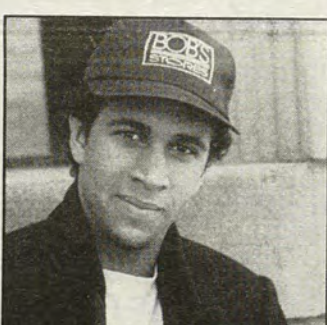
**Aaron Loeber:** "I would throw away my textbooks and take a long walk through the desert."



**Sky Duarte:** "I would have a beer."



**Mary E. Whiting:** "Fly to Europe."



**Jay Walker:** "I don't know. I might go to class for once, just to see what it's like. It's been so long, I forget."

## Presidential changeover "in the numbers"

*continued from front page*

Clinton (44%). It was an inverse situation in 1984, when the students favored Bush. The full time students, for example, voted in 1984 for Bush with 52% against Mondale's 47% but in 1992, they voted for Clinton (50%) against 35% for Bush.

Without doubt, the educational and economic policy of the Bush administration did not sit well with students. Remember that in the last four years, the economy has grown 1 percent on average; the unemployment is about 7.5%; the national deficit increased more than one billion of dollars and the numbers of Americans living at the poorest levels has ascended nearly 15 percent. The standard of living since 1987 has declined between 3.5% and 7.6%.

Those with income under

\$15,000 traditionally had voted for the Democratic candidate together with unemployed people. They consider that the Democratic party may offer them better living conditions. But some sectors of the middle class also welcomed the Democratic candidate. People with income between \$15,000-29,000 that in 1984 voted for Bush, in 1992 leaned towards Clinton. The most important sector of voting, with income between \$30,000-\$49,000 also voted for Clinton, not Bush.

These indicators also may say that the recession and the inefficiency of the economic policy of the Bush administration changed their idea and decision about who to vote for. Years ago, they supported the Republican candidate,

but now they realize that they are not guaranteed a better future.

This rejection against the new policies imposed by the Bush administration could confirm the indicator which asked if a "family's financial situation is worse today," which said that 52% voted for Bush in 1984 and 47% for Mondale. This year, 50% of the families that said their situation is worse voted for Clinton, with 35% voting for Bush and 15% for Perot.

These reflections on the last election demonstrate that the majority of people voted for change; they were tired of the economic situation and they hope that the new Clinton administration will bring a social well-being. If they are let down, leadership again may change in the next election.

# SALE!!

## All Clothing 10% Off

## CAMPUS s • t • o • r • e

### The Anchor

*Executive editor*  
Jeff Wallace

*News editor*  
John Valerio

*Entertainment editor*  
Jeff Damiano

*Sports editor*  
Rebecca Hill

*Photography editor*  
Julie Griffin

*Layout and design editor*  
John Valerio

#### Staff writers

Marcella Astudillo, Andrew Bean, Eric Barna, Mani Barcellos, Susan Chagnon, Rich Cippola, Jeff DeAlmo, David B. Efros, Pat Ferencz, Emmett Glenn, Christian Hokenson, Kim Irwin, Nicole Iozzi, Ben Jones, Pete Leddy, Joe Longo, Jennifer McMahon, Derek Moison

#### Graphics staff

David Lineberger, Chong Kim

*Advertising Assistants*  
Bob Neilson, Alyssa Klein, Nathan Hutnak

#### Typesetters

Hector Galvain, Velma Tremblay, Eva Kendrick

*Faculty advisor*  
Dr. Moyne Cabbage

*Advertising editors*  
Jeff Wallace & Ellen McDonald

*Copy editor*  
Joe Hutnak

*Graphics editor*  
Al Gunther

*Public Relations manager*  
Al Gunther

*Business editor*  
Belinha DeAbreu

*Managing editor*  
Brian Sheehan

#### Photography staff

Steve Bean, Donna Biondi, David B. Efros, Pat Ferencz, David Fisher, Fatima Martin, Rachel Morin, Leigh Murphy, Jeff Sheffer, Yokasta Suero, Tom Sylvester, Peter Ventrone, Chrissi Crawley

#### Darkroom staff

Yokasta Suero, Jeff Sheffer

*Layout and design staff*  
Steve Bean, Dayna DeFeo, Claudine Holdgate

*Address all correspondence to:*  
The Anchor, Student Union room 308  
Rhode Island College, 600 Mount Pleasant Ave. Providence, R.I. 02908  
456-8280 • 456-8544



## This Is It

The period in this box is large enough to hold 230 million AIDS viruses. It takes only one to change your life.

For a better look 30,000x See National Geographic Vol 169 No 6 June 1986.

**THINK!!!** Your life depends on it  
Paid for by Americans For Common Sense,  
meeting weekly 723-3330

### JOHNSTON PIZZA HOUSE of "GOOD FOOD"

## \$1.00 OFF ANY LARGE PIZZA

ONE OFFER PER ID  
PER PERSON  
831-5520

10 INCH SMALL  
15 INCH LARGE

SPINACH PIES-SALADS- HOT GRINDERS  
TABLE OR TAKE OUT ORDERS

705 KILLINGLY ST. JOHNSTON, RI 2 MIN. FROM RIC  
OPEN M-TH 11-9, FR-SAT 11-10, SUN 4-9



Classic Pizza Plus  
1818 Mineral Spring Ave.  
N. Providence, R.I.

# Large Cheese Pizza Delivered \$5.95

Classic Pizza Plus  
1818 Mineral Spring Ave.  
N. Providence, R.I.

## 353-5100

## Debate team continues success

The Rhode Island College Debate Council has proven themselves once again this past weekend at the Columbia Debate Tournament by posting a combined 11-4 team record.

The council was led by the team of David Pridham and Phil Murtha who ran up a 4-1 record and placed 13th in a field of over 170 teams. Murtha was also recognized as an individual speaker for placing 19th out of 340 participants.

The team of Ersel Nuay and Jason Bruno also posted a solid 4-1 record with a team of Andrew Thompson and Becky Morency finished with a respectable 3-2 record in what is considered to be a highly competitive field.

This showing has been the strongest team effort to date and with three tournaments remaining the council hopes to continue the

trend. The next major tournament will be the World Debating Championship in Oxford, England scheduled for January 1993.

Anyone who is interested in becoming part of the council should contact Jeff Fieldler at 456-8175 or come by the office in Student Union 204. No prior experience is required and new members are always welcome.

## Bannister exhibit showcases design work

"Creative Collaboration: Two Views" is an exhibition at Rhode Island College's Bannister Gallery now through November 25 featuring two distinctly different approaches to advertising and graphic design as exemplified by the Providence firms of Pagano Schenck & Kay and Tyler Smith Art Direction.

"Collaboration plays an important role in the development of creative concepts for both print

graphics and advertising campaigns," notes exhibition curator, Prof. Heemong Kim of the art department.

This exhibition and related programs will explore the characteristic methods used by these firms in interfacing with, illustrators, photographers and typographers, and the role that the art director plays in guiding this collaboration from concept to execution.

This exhibit is free and open to

the public. This exhibit, along with others this semester is supported in part by the RIC Art Club and the College Lectures committee.

Regular hours are Monday through Friday from 11 a.m. to 4 p.m. and Tuesday and Thursday evenings from 6 to 9. For more information, call gallery director Dennis O'Malley at 456-9765 or 8054.

## ROCKED, continued from front page

been credited to intensive registration drives by MTV and organizations including Rock the Vote and the National League of Women Voters.

Mike Dolan, political field director with the high-profile Rock the Vote, estimated that the group registered 1 million young voters with its in-your-face tactics. The California-based group, organized by the music industry, estimates it registered about 350,000 college students using a direct grassroots approach. Trained student volunteers canvassed in college and university dorms and set up registration booths at record stores and concerts.

"We had some seriously trained, black-belt student organizers and volunteers across the country," Dolan said. "They were in the trenches with their clipboards and buttons. They'd be right at concerts: 'You, with the tattoo. Come over here. Register to vote'."

Rock the Vote's public service announcements on MTV and its hour-long special on Fox persuaded about 750,000 young people to register, according to an independent survey conducted by Soundata, a New York-based company specializing in market

research for the recording industry.

The TV spots, with their pointed political messages delivered by groups like Megadeth, Deee-Lite, R.E.M., and the Red Hot Chili Peppers energized young voters and persuaded them that "this is their moment to make history, to take back the system" said Dolan. "It was the coolest way to get them to register."

Major corporations took Rock the Vote's lead, airing sexy spots targeting young voters. Along with Whoppers and fries, Burger King urged political participation with its public service announcements urging students to vote because "the only away to have it your way is if you vote your way."

MTV's "Choose or Lose" campaign and the National League of Women Voters' "Take Back the System" drive, worked in coalition with Rock the Vote, using similar tactics that proved effective during the first presidential primary.

It was in New Hampshire that Rock the Vote kicked off its registration drive. Targeting 15 colleges and universities throughout the state, Rock the Vote student volunteers registered 10,000

young people in one week, Dolan said.

"New Hampshire was a perfect test case," Dolan said. "It showed us that students aren't apathetic, they aren't cynical, they just need access to the political process."

Young voters can change the political landscape by forcing candidates to focus on the issues students care about, such as education, the environment, economic opportunity, censorship, and abortion rights, Dolan said.

But in order to get politicians attention, Dolan said, young voters must convince them that students will register and they will vote, even if the system makes it difficult for them to do so.

"Our system of registration is targeted at older people, the ones with the condos on the 17th green who are permanently registered to vote," Dolan said. "If young people are going to register, you have to make this incredibly arcane system of registering open to them, and then they'll get out the vote."

"If you can get young people to register, you'll get them to vote," agreed Becky Cain, president of the National League of Women Voters.

## Do You Want VISA & MasterCard Credit Cards?



Now you can have two of the most recognized and accepted credit cards in the world... Visa® and MasterCard® credit cards... "In your name." EVEN IF YOU ARE NEW IN CREDIT or HAVE BEEN TURNED DOWN BEFORE!

VISA® and MasterCard® the credit cards you deserve and need for— ID—BOOKS—DEPARTMENT STORES—TUITION—ENTERTAINMENT—EMERGENCY CASH—TICKETS—RESTAURANTS—HOTELS—MOTELS—GAS—CAR RENTALS—REPAIRS—AND TO BUILD YOUR CREDIT RATING!

GUARANTEED  
VISA/MasterCard  
GUARANTEED ISSUE  
OR MONEY BACK

No credit  
No security deposit!

Approval absolutely guaranteed so

MAIL THIS NO RISK COUPON TODAY

STUDENT SERVICES, BOX 17924, PLANTATION, FL 33318

## YES!

I want VISA®/MasterCard® Credit Cards. Enclosed find \$5 which is 100% refundable if not approved immediately.

NAME \_\_\_\_\_

ADDRESS \_\_\_\_\_

CITY \_\_\_\_\_ STATE \_\_\_\_\_ ZIP \_\_\_\_\_

PHONE \_\_\_\_\_ S.S.# \_\_\_\_\_

SIGNATURE \_\_\_\_\_

NOTE: MasterCard is a registered trademark of MasterCard International, Inc. Visa is a registered trademark of VISA U.S.A. Inc. and VISA International Services Association.

100% GUARANTEED!



# Invading the privacy of Norman Hardacker

by Jason Barrett  
Anchor Staff

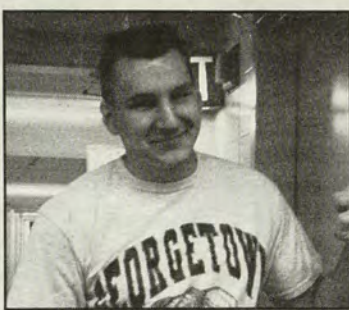
The intramural season for many sports at the Rec Center is coming to an end, and teams are struggling for placement as the playoffs near. One such sport is the Wednesday night arena football league, and one such team is the Fighting Irish. This week's sports figure of the week, a member of that struggling team, is Norman Hardacker.

While speaking to Hardacker, I couldn't help but think that I probably didn't eat right as a child. Hardacker, however, apparently did. Standing at about 6'5, 200+ pounds, this 19 year-old hails from Naugatuck, Connecticut. Hardacker is a second year physical education major who works out six times a week. One day, Norman hopes to enter either a teaching or coaching profes-

sion. His high school activities included basketball, baseball, and track (in which he also participates here). Hardacker also believes that RIC should, like most schools, have a football team, stating that "we probably would not be competitive at first, but after a few years of recruiting, we could compete." Indeed, a pick-up team on campus could probably beat Brown quite easily.

In addition to Arena football, Hardacker throws the shot-put on the track team. In competition, Hardacker considers himself "overly aggressive." He admits that winning is everything and that he will let any of his team mates know if they are not performing to their full potential.

However, Hardacker's quiet disposition makes it rather difficult to envision him as someone who would be that outspoken. Rather, one perceives that Hardacker is



ANCHOR PHOTO BY REBECCA HILL  
Intramurals player Norman Hardacker.

simply overly determined. He in fact states with certainty that his struggling Arena football team "will be number one by the end of the season."

Although Hardacker follows no specific diet, lasagna is his preference as a main food staple.

Apparently, the message to be gained is that health is not entirely in what you eat, but what you do once you eat it. As far as a social life, Hardacker can be found

occasionally at the social Mecca of the area, the Tap. Also, Hardacker is a die-hard Rocky fan with the ability to quote, at will, lines from any of the five Stallone flicks. He believes that the biggest problem here is that "not enough students live in the dorms" and that "too many people leave on the weekends."

"Job satisfaction," says Hardacker, "is definitely more important than money." This really shows Hardacker's depth; as the majority of us struggle in academic fields which we believe will yield us the greatest amount of prosperity, such statements are often heard, but seldom meant.

Hardacker's commitment to this phrase of self-fulfillment, however, is exhibited by his dedication to his teammates, his school, and himself in continually striving to attain his personal best.

## HELP WANTED

# We need sports writers

### Like Sports?

### Like to write?

### Huh, well do ya?

If  
interested,  
call Rebecca  
Hill: Sports  
Editor at  
The  
Anchor,  
Student  
Union  
room 308  
456-8280.

### Jump Ship Join the Anchor

## Up and coming Sports this Week...

### Wrestling

Sat. Nov. 21 @Springfield College 10:00 a.m.

### Women's Basketball

Sat. Nov. 21 @Bryant College 2:00 p.m.

### Men's Basketball

Sat. Nov. 21 @Bryant college T.B.A.



**PLANNED PARENTHOOD  
of Rhode Island**

- Pregnancy Testing
- Abortion Services
- Affordable GYN Care
- HIV Testing
- STD Testing & Treatment
- Counseling

APPOINTMENTS/  
CLINIC

**421-9620**

111 Point Street, Providence, Rhode Island 02903

### R.I.C. STUDENTS VOLUNTEERS NEEDED

## Thanksgiving Day

Volunteers and/or donations needed

Serve at St Patrick's or St Michael's

Contact the Chaplains' Office for more information (x8168 SU 300)

Leaders for Girl Scouts & Brownie  
Troops needed in the RIC area

2 primary grade groups

1 Junior high school group

call Sr. Mary Ann (x8168, SU 300)  
or Sue Viav (865-2232)

CONTINUING OPPORTUNITIES AT SOUP KITCHENS:

Amos House - Mondays 2:00 pm  
McAuley House- Tuesdays 11:15 A.M.

Meet In the Chaplain's  
Call Sr. Mary Ann x8168  
Meet in the Chaplain's  
Office, Student Union 300

# Anchor Scoreboard

## Men's Cross Country Scores & Results

<u>DATE</u>	<u>MEET</u>	<u>PLACE</u>	<u>TOP SCORE</u>	<u>RIC SCORE</u>	<u>RECORD</u>
10/23/92	Little East Championships	4th of 4	27	100	3-46

## Women's Cross Country Scores & Results

<u>DATE</u>	<u>MEET</u>	<u>PLACE</u>	<u>TOP SCORE</u>	<u>RIC SCORE</u>	<u>RECORD</u>
10/23/92	Little East Championships	4th of 4	28	92	7-29

## Women's Volleyball Scores & Results

<u>DATE</u>	<u>OPPONENT</u>	<u>W/L</u>	<u>SCORES</u>	<u>RECORD</u>
10/19/92	U. S. COAST GUARD ACADEMY	L	3-15, 4-15, 15-10, 7-15	11-13
10/21/92	U. MASS - DARTMOUTH	W	12-15, 15-17, 15-7, 15-6, 15-11	12-13
10/24/92	EASTERN NAZARENE COLLEGE	L	11-15, 11-15, 15-12, 4-15	12-14
10/27/92	Roger Williams University	W	15-6, 15-10, 12-15, 15-13	13-14
10/29/92	Clark University	W	16-14, 15-10, 13-15, 15-12	14-14

## Women's Tennis Scores & Results

<u>DATE</u>	<u>OPPONENT</u>	<u>W/L</u>	<u>RIC SCORE</u>	<u>OPP. SCORE</u>	<u>RECORD</u>
10/20/92	ASSUMPTION COLLEGE	W	6	3	8-2
10/23/92	U. Mass. - Dartmouth Invit.	**1st place**			

## Women's Tennis Final Individual Records by Team Points

<u>Name</u>	<u>Singles Record</u>	<u>Doubles Record</u>	<u>Team Points</u>
Alison Woodman	4-5	5-2	6 1/2
Marilyn Morris	3-6	8-1	7
Michelle Cote	4-6	7-2	7 1/2
Rollie Ernst	7-3	6-2	10
Melanie Lepre	6-3	2-0	7
Tanya Howard	8-2	6-0	11
Pamela Prendergast	0-0	5-3	2 1/2
Joan Murphy	2-1	5-2	4 1/2
<b>Team Totals</b>	<b>34-26</b>	<b>22-6</b>	<b>56</b>
Final 1992	8-2		

## Soccer Final Scores and Results

<u>Date</u>	<u>Opponent</u>	<u>W/L</u>	<u>Score</u>	<u>Record</u>
10/20/92	ALBERTUS MAGNUS COLLEGE	T	0-0 OT	2-11-1
10/22/92	Salve Regina University	L	1-3	2-12-1
10/25/92	PLYMOUTH STATE COLLEGE	L	1-2	2-13-1
10/28/92	NICHOLS COLLEGE	T	2-2 OT	2-13-2

## The Ruffstone Tavern

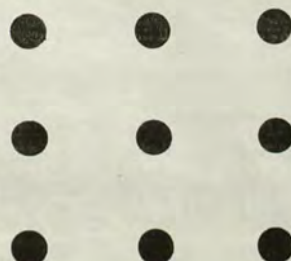
Cheeseburger (80% Lean)	\$2.00
Grilled Cheese W/ Tomato	\$2.00
Tuna Melt	\$3.00
Turkey Breast Sandwich	\$3.00
Grilled Fresh Chicken Cutlet	\$3.00
Pastrami (90% Lean)	\$3.00
Meatball Grinder	\$3.00
Ham & Cheese	\$3.00

All Served With  
Ruffstone Tavern  
Fresh Potato  
Fries.

The Ruffstone Tavern  
17 Metcalf Ave.  
No. Prov., R.I.  
**353-2970**

Use This Card For A  
Free Sandwich

BUY NINE GET ONE FREE!





Dave Mustaine and his band, Megadeth, played the Centrum in Worcester on November 8th. See next week's Anchor for a review of the show and their new disc, *Countdown to Extinction*



ANCHOR PHOTO BY JEFF DAMIANO

*The Anchor: Bringing it to you first, every week.*

LSAT  
GMAT  
MCAT  
GRE

If you're taking one of these tests, take Kaplan first. We teach you exactly what the test covers and show you the test taking strategies you'll need to score your best. No one teaches you to think like the test makers better than Kaplan.

KAPLAN HAS MOVED  
CHECK US OUT AT:  
144 WAYLAND AVENUE  
(NEAR BROWN U.)

CALL  
1-800-KAP-TEST

**KAPLAN**

The answer to the test question.

## Peter Gabriel: another musical masterpiece

by Pete Leddy  
Anchor Staff

Peter Gabriel  
*Us*  
Geffen Records

Peter Gabriel has always been a very interesting artist in the musical realm. He was one of the original members of Genesis, only later to find out that he was destined to be a strong success working solo.

His first album was released in 1977 and featured the classic "Salsbury Hill." He did not score any other big hits until 1980 with his third release consisting of songs like "Games Without Frontiers" and "Biko." In 1982 he gave us "Shock The Monkey," "San Jacinto," and "I Have The Touch." 1986, though, was Gabriel's biggest year of his life with his album, *So*. It featured monster hits like "Sledgehammer," "Red Rain," "Don't Give Up," (a beautiful ballad with guest vocals by Kate Bush), and "In Your Eyes," from the movie soundtrack *Say Anything*. In 1989, his pace slowed up with the *Passion* LP. His greatest hits

album, *Shaking the Tree*, was released in 1990, featuring many songs from the *So* album. Now in 1992, Peter Gabriel gives us *Us*.

This is another true masterpiece from Gabriel, who arranges some of the most interesting bands and writes some of the most peculiar lyrics in music. The album begins with a song named "Come Talk To Me," which has a few distinct features about it. First and foremost, Sinéad O'Connor does the backing vocals (do not be offended). Secondly, the music possesses an interesting bagpipe hiding behind an incredible drum/bongo ensemble. "Love To Be Loved" is another song possessing intricate drum beats and very funky bass patterns. In the third track, "Blood of Eden," O'Connor sings some more, and it is still a very good song.

"Steam" is very upbeat, like "Sledgehammer" and "Big Time." Gabriel's voice on this song is intense, and the horn section gives it that extra depth, which is also similar to those tunes. "Only Us" incorporates a very peculiar flute in the background and



sort of reminds you of "San Jacinto." "Digging In The Dirt" is the first single off the album, and basically, if you like this song, you'll definitely like the rest of the album as well. Other songs, such as "Fourteen Black Paintings," "Kiss That Frog," and "Secret World," present us with more extraordinary bass currents and more of Gabriel's thought-provoking lyrics.

In short, Gabriel has kept up his already-famous solo excellence on this new album.

## Life after Berkeley College

by Andrew Bean  
Anchor Staff

Dream Theatre  
*Images and Words*  
Atco Records

You could say that graduating from the Berkeley College of Music in Boston is like obtaining a Ph.D. in the music world. Dream Theatre is one of the groups that has obtained this educational apex. These five guys met at school and took their majors extremely seriously.

Their debut album is called *Images and Words*. The music on this presentation puts images in your mind, it's larger than life. To say this band has talent is a complete understatement. They create a hard-rock orchestra. All of the band members help out with the lyrics and music. The

composition is so tightly structured that you would be hard-pressed to believe they could duplicate the sound live.

Drummer Mike Portnoy stands out most with his original style as he strikes the tom-toms and snares with accurate precision. No doubt, this band rewrote the word "rock."

"Pull Me Under" is the opener which can also be heard on WAAF. It reminds you of "Wall of Sound" by Pantera and the high-pitched vocal style of Queensryche's Geoff Tate.

The next performance, "Another Day," lacks creativity. Dream Theatre should stay away from little wimpy feminine ballads, it makes them sound like Slaughter or Poison, but even at their lowest, Dream Theatre beats Poison's highest.

"Take the Time" is the disc's

best track. Because it's eight minutes long, Dream Theatre shows off many dramatic changes which will hold many listeners' attention. They'll hit you like thunder and then form a musical opera.

Five of the seven songs are seven minutes or longer. One track is almost twelve minutes in length and this is where the band is at their best. Four minute radio ballads are where they lose it; Dream Theatre isn't for the radio.

*Images and Words* is powerful and motivating. This goes beyond your typical rock and roll dream. If you want something that can't really be stereotyped, here's an hour worth of medicine for your sore ears.

Warning: If you're a metal air-head from Woonsocket who works at Ponderosa, this isn't for you.

**Got something you want to say?  
Put it in the Personals.**

**25 free personals are given away each  
week at the Student Union  
Information Desk.**



"I said **EXTRA LARGE**; they said **SMALL & MEDIUM**. I said **SIX COLORS**; they said **TWO TO THREE**, IT'S ALL WE CAN HANDLE ON CAMPUS. I said **100% COTTON HEAVYWEIGHT**; they said **50/50 LOW-GRADE**. I said **WILD NEW DESIGN**; they said **WELL... WE... UH...** I said **WHAT IS THIS \*!&\$\$!!\*???**; they said **YOU PAY PEANUTS YOU GET... Y'KNOW...**"

**POMEGRANATE T-SHIRT DESIGN PROFESSIONALS 751-9729**



## Extreme expresses their view on all *Three Sides*

by Pete Leddy  
Anchor Staff

Extreme  
*Three Sides to Every Story*  
A&M Records

The pop-rock bad boys from Boston are back once again with their third LP entitled *Three Sides to Every Story*. This album is a little different for them, though. They are still comprised of the same four guys (Gary Cherone on vocals, Pat Badger on bass, Paul Geary on drums, and Nuno Bettencourt on guitar and everything else), but they have changed their concepts a bit.

In 1988, Extreme released their self-titled debut, with singles such as "Kid Ego," Mutha (Don't Want To Go To School)," and "Play With Me." In 1990, they gave us their second LP called *Pornograffiti*, which featured well-known radio songs like "Decadence Dance," "Get the Funk Out," "Hole Hearted" (which featured appearances by Cam Neely and Lyndon Byers of the Boston Bruins in the video), and let's not forget their number one "More Than Words" (what a

pretty song!). Well, anyway, let's take a look at the latest.

Overall, it is a decent album for which Nuno Bettencourt should be highly commended. Besides being one of the premier guitarist in the business today, he also produces the album and arranges the orchestra that plays along with the band on some of the songs. Did I mention that he plays the piano? We have also seen his talent to sing, too (remember his vocals with Gary on that pretty song?), but he really shouldn't be given all the credit. Without his band he would just be another Steve Vai or Joe Satriani (only with a voice).

No, no... seriously. Gary Cherone is an excellent vocalist, Pat Badger is a damn good bassist, and Paul Geary fills the percussion department rather effectively. As for concept of the new album, it's divided into three parts (or "three sides of the story"), Part I, Yours; Part II, Mine; Part III, The Truth.

Part I is really rockin' and sounds like the stuff off their first album. The opener "Warheads" is the heaviest song on the album. "Color Me Blind" is another cool song, which is moderately heavy,

and Nuno's guitar solo is superb. other tunes on the "Yours" part are "Rest in Peace," the first single, which is continuing its climb up the charts each week, and "Politicalamity." Both songs are decent, but seem to possess Hendrix-like solos, like the "Voodoo Child" ripoff in "Rest."

As for Part II, it mellows out quite a bit with "Seven Sundays" and "Tragic Comic," a couple of acoustic ballads. Then it picks up again with "Our Father" and "Stop the World," which are a couple of awesome songs.

The Truth (Part III) is only three songs (actually, they are one song all together called "Everything Under the Sun"). Each flows into each other to form a twenty minute opus with some beautiful orchestration. The first is "Rise 'n Shine" followed by "Am I Ever Gonna Change" (the emotional climax), ending with "Who Cares?"

I hope you care, or else I'm telling you this for no reason at all. But anyway, if you like Extreme, check out this album if you haven't already. You might like it!

## Folk duo showcase latest release

*Coffeeground welcomes Fuzek and Rossoni*

by Leigh Murphy  
Anchor Staff

Fuzek and Rossoni  
New Music Night

Tuesday night's performance at the Coffeeground was once again by a folk music duo. This time the performance was by Fusek and Rossoni.

The duo has played all over New England and New York and has performed with musicians such as Marshall Crenshaw and Don McClane. They have just recently finished recording their CD *Waking Up From The American Dream*. Their eleven-song set was taken entirely from the CD. They perform originals that cover a wide range of topics from environmental ("March On") to more personal topics such as "Next Bus," a song about Rossoni's former neighbor.

The duo primarily share lead vocals, but for this set, they each did solos so the songs would better follow the sequence of the CD. Both are excellent vocalists, whether they are harmonizing together as in "Fire In The Sky" or singing solo on songs such as "Peace Of Mind" (Rossoni) or "Don't Let My Smile Cry" (Fusek).

Other highlights were "Spring



ANCHOR PHOTO BY LEIGH MURPHY  
Mary Ann Rossoni performs at New Music Night last Tuesday in the Coffeeground.

Fever" and "Trying to Get the Big Picture from the Little Screen."

Overall, it was a great show, although they did have a few technical problems, such as with "Don't Let My Smile Cry" where Fusek started off in the wrong key, but this was fixed quickly and for the most part, the show was relatively flawless.

## Wives won't leave you merry

by Anthony Hutnak  
Anchor Staff

*The Merry Wives of Windsor*  
at Roberts Hall  
Thursday, November 12

Picture this: a bright stage crowded with huge monuments. The Washington Monument, in red, towering overhead, a yellow White House poking out behind it, like a sore thumb, and the Lincoln Memorial, green in color, peeking in from the side.

thetically to imitate every comedy trio from the Marx Brothers to Larry, Darryl and Darryl. This is just the beginning.

In the "plot" (and I use the term lightly) that follows, three southern belles (from who knows where) mess around with the minds of their husbands and an old pervert (remember Ronnie McDonald?), while the rest of the cast entertain themselves with heavy drinking and heavier frat slap-stick.

Did I mention this is *Shakespeare*? Maybe I should have. The only reason I mention this is because the "play" (again, I use the term loosely) was disguised as Shakespeare's work. The "actors" (if I may be so bold) spoke words from his play, *The*

*Merry Wives of Windsor*, and Shakespeare's face is on the cover of the program. So maybe it would be safer to say "this was meant to be Shakespeare."

While we're on the subject of "meant to be's," it was also meant to be Washington, D.C., circa 1957 (if you read the program, which I didn't think the cast did).

On a personal note, I was so outraged by the horrid debacle into which the bard's work was transformed, that I could not stand for the second half (and quite a few other audience members had the same idea). If anyone should happen to find a program from this show on Robert's Hall lawn, ripped in two, it was meant to be there.

## Theatre

It's as close as you can get to a life-sized Monty Python cartoon without having a giant foot squashing scurrying victims. Beautiful scene for comedy, wouldn't you say?

Out march three men in the loudest, most ridiculous costumes of all time. After their dialogue, full of lusty innuendo voices and hand gestures to match, they meet with an old, squat caricature of Ronald McDonald, followed by his assistants, three men who attempt pa-



Look to  
the Classifieds

## Boston Trip

to the Boston Museum of Science

\$15.00 provides bus and admission

-Open museum

-Star Trek exhibit

Sunday November 22

Tickets available at Information Desk

For more information contact the Physical Science Club in Clarke Science or call Michael Corrente at 521-5438.



Classic Pizza Plus  
1818 Mineral Spring Ave.  
N. Providence, R.I.

## RIC Special

★ Medium Cheese Pizza

★ 2 Cokes

★ 2 Doughboys

**\$5.95**

Classic Pizza Plus  
1818 Mineral Spring Ave.  
N. Providence, R.I.

**353-5100**



# What's happening

## Monday

Talk about holiday deals... The Providence Performing Arts Center is offering the perfect gift for the theatre lover in your family. Starting today, for fifty dollars you can enter the **Tip Top Club**. The Tip Top Club offers you tickets to five Broadway Shows through out the next six months. Call 421-ARTS for more information on the package.

## Tuesday

Perfect Circle preforms in the Coffeeground for New Music Night, which is probably much better then our next item.

This is it. I've found something worthwhile in this week's *Nice Paper*. On their calendar page they list the following... "The Robert Jazz Mystery Box Film Festival is showing the rare 1965 classic *Jesse James Meets Frankenstein's Daughter* at 7:30 p.m. at AS220." For the info on how to get there or if they plan on charging to get in there, give 'em a call at 831-9327.

## Wednesday

This will be the high point of my week, I assure you. From 10 a.m. till 5 p.m. in the Video Den you can **Star in Your Own Music Video!** It's just like Karaoke except you get to keep the tape for your own private embarrassment time after time. I'd think you will have to bring your own tape but otherwise it's free. Maybe you'll make the musical version of *Jesse James Meets Frankenstein's Daughter* or a new *Cop Rock*. Spare us, please.

This is the big day for Super-Tights. Today, *Superman #75* comes out in which the big guy bights a big bullet. This is expected to be the best selling comic of all time, which would mean over 7 million copies. Don't miss out.

## Thursday

*Harm's Way* begins its final stint at The Perishable Theatre. Call 331-2695. It's also almost time for the curtain to close on *The Wizard of Oz* at Blackfriars Theatre, also. Call



ANCHOR PHOTO BY JULIE GRIFFIN  
Eric Van Marter, performing as Kenny Keister, mingles with the guests at last Tuesday night's performance of 'Prom '63' performed by Murder On Us in the Faculty Center.

865-2218. Last performance for each show is Sunday.

If you've seen those two already, The NewGate Theatre premieres *The Belle of Amherst* by William Luce and it's based on the life of Emily Dickinson. Call 421-9680.

## Friday

I can't tell you enough to check out the new *Dracula* movie by Coppola. The only thing with this one is that you *must* see it at midnight and it's a

two and a half hour flick. Get a nap before hand and remember the garlic.

## Saturday

These guys must be ecstatic that they stuck it out all these years, but once again **The Charlie Daniels Band** dusts it off for another set at the Zeiterion Theatre. There's two shows so you can't miss it. Comedian Paul Wayne opens. Tickets range from \$18 to \$26. In RI (no religious message implied) call 331-2211. The devil went down to New Bedford, he was looking for a show to see...

## Sunday

If you passed out at the Zeiterion last night, you'll wake up to Opera (ouch- hangover!). Puccini's *La Boheme*, the story of the trials of some young artists, is here for one performance only. Call you eediot!

## Monday

Mary's Danish and The Darling Buds are at Baby Head tonight. Tix are \$6 in advance and \$7 the night of show.

# Fun Flicks

## TOTALLY INTERACTIVE VIDEO



**Now you can be the star of a mini-movie with sound effects and music background.**



**30 Different movie scenes • Hundreds of costumes and props to select from  
Over 350 songs to choose from • 85,000 special effects backgrounds**

**Wednesday, November 18 All day in the Student Union Ballroom  
FREE!!!**

**Sponsored by RIC Programming**



# Visit Japan with Dave Barry for \$20

by Joe Longo  
Anchor Staff

Dave Barry Does Japan  
by Dave Barry.  
Random House, 1992. \$18.00

My original intention this week was to write a review of the book by our new Vice President Al Gore, entitled *Earth in the Balance*. But I shunned the opportunity. the thought of all the innocent, defenseless trees that were sacrificed to vault such nonsense onto the bestseller list chilled me deeply. I mean, it's just a shame, especially whey you consider that the V.P.'s death tome contains logic and suspension of reason so primitive that its notions would have been better suited for presentation in the form of cave hieroglyphics (using government subsidized caves, of course).

So, with that vent of frustration over the results of Election '92 out of the way, let's turn our attention to more pressing issues, such as why Dave Barry spent three weeks in Japan last summer.

We'll let Mr. Barry explain why: "To try, in some small way, to make this world a better place for people everywhere, and for the generations to come. I'm lying, of course. I thought a trip to Japan might be pretty funny, es-

pecially since Random House had agreed to pay for the whole thing."

Japan, however, isn't nearly as funny as Mr. Barry himself and the truly hysterical passages often come when he drifts off the subject matter, which is often: "We did spend some money on plastic food, which we found in the Plastic Food District, which as you may recall is the topic I was attempting to raise several thousand words ago."

So we only get a superficial account of Japan here. But so what? Early on, Mr. Barry informs us: "This book is not authoritative. If you want authoritative, go by a real book."

What's important here is Dave Barry, who as you may or may not know, is the funniest living organism on this planet or any other planet Al Gore may wish to save. Let's listen in, shall we?

On golf: "The Japanese eat, breathe, and sleep golf; the only thing they don't do is actually play it, because to get on a course, you have to make a reservation roughly 137 years in advance, which means that by the time you actually get to the first tee you are deceased."

On tipping: "There is no tipping in Japan. This was quite a shock for me, coming from a

country where you regularly find yourself tipping people just so they won't spit on you."

On high prices: "I cannot overemphasize the importance, if you go there, of having Random House pay for everything."

On the theatre: "Kabuki has the same dramatic pacing as bridge construction. It's not unusual for a play to last ten hours. And bear in mind that one hour of watching Kabuki is the equivalent of seventeen hours spent in a more enjoyable activity, such as eye surgery."

It should be noted, in fairness, that this is far from Mr. Barry's funniest book. Personally, I vote for *Bad Habits: a 100% Fact Free Book* (kind of like *Earth in the Balance*). Foreign correspondence in the humorous vein is best left to P.J. O'Rourke (he makes Beirut a scream).

Nevertheless, diehard fans of Dave Barry will not be disappointed, and newcomers to irresponsible journalistic reporting would do well to cut their teeth on this book before attacking the deathly funny material of his previous works. I warn you, though, to skip the "Hiroshima" chapter. It's his token attempt at sincerity and he comes off sounding like some sort of paranoid future Vice President or something. Enjoy.

# Frat finds trouble, Playboy announces Polish issue

Did you hear...for week ending November 13, 1992

by Frank O'Donnell  
Anchor Contributor

Cranston Mayor Mike Traficante is upset that Governor Sundlun didn't tell him that he's thinking about moving the registry of Motor Vehicles from Providence to Cranston. You'd think he'd be happy all those IROC's don't have to travel so far, but apparently not.

An employee of the Newport campus of the Community College of Rhode Island has been charged with pocketing more than \$11,000 in cash which students paid for textbooks at the school's bookstore... I know what you're thinking -- CCRI students use textbooks?

The president of URI's Theta Chi fraternity has been arrested on charges of running a thriving marijuana business out of the frat house... the bad news is, he faces expulsion and a lengthy prison term... The good news is, his business was so successful, he's getting an honorary MBA.

President Bush and Vice President Quayle hosted a dinner for the nation's new Republican senators last week... Think of it like the Last Supper after the crucifixion.

Congressman Ron Machtley says he expects to have an easier time dealing with Bill Clinton than President Bush on the Seawolf submarine... although, given Clinton's reputation with the ladies, you'd think anything with wolf in the title would have him a little gun-shy.

Senator Bob Dole is urging President Bush to pardon Caspar Weinberger for any Iran-Contra related crimes... No comment yet from Bush, but don't expect all crimes to be forgiven, especially the one of keeping notes that proved Bush was in the loop the whole time.

Some good news finally on the national economic scene... First-time claims for unemployment benefits fell for the third week in a row last week, to the lowest level in two years... Expect that trend to continue until about the middle of January, when the entire Bush Administration starts filling out unemployment forms.

Playboy unveils its new Polish edition this week, and in the true Polish tradition, all the naked women will be fully-clothed.

The Senior Class at Colby College has invited Mikhail Gorbachev to speak at its 1993 commencement... The only prob-

lem is, it will cost about \$100,000 to get Gorbie and his entourage to Maine, and the class can only spend \$1,000... For that kind of money, the only Russian they can get is Boris Badenov.

New research by the committee for the Study of the American Electorate finds that people who get the majority of their political news from television generally do not vote... According to the Committees Executive Director, television tends to turn people into passive spectators, providing images that wash over them rather than promoting linear thinking... In other words, if you watch a lot of TV, you don't have a clue what the study is all about.

The family of a convicted murderer was awarded \$2,000,000 last week after a jury decided that the sleeping pill Halcion helped alter the man's personality enough to make him a killer... This is the same drug blamed for making George Bush throw up on the Emperor of Japan last year... Which means the Emperor can now sue the makers of Halcion for his dry-cleaning.

Frank O'Donnell hosts Amateur Night at Periwinkle's every Wednesday night.



## HIT LIST

November 16, 1992

Request Line  
456-8787

CHR Music Director:  
DINA LEE ALMEIDA

Rhode Island College - 600 Mount Pleasant Avenue  
Providence, Rhode Island 02908 - (401) 456-8288

LAST WEEK	THIS WEEK	TITLE	ARTIST
1	1	I'd Die Without You	PM Dawn
2	2	How Do You Talk To An Angel	The Heights
8	3	What About Your Friends	TLC
7	4	If I Ever Fall	Shai
11	5	Good Enough	Bobby Brown
6	6	Real Love	Mary J. Blige
3	7	Rhythm Is A Dancer	Snap
9	8	Love Is On The Way	Saigon Kick
5	9	Someone To Hold	Trey Lorenz
12	10	Layla	Eric Clapton
13	11	Do You Believe In Us	Jon Secada
14	12	Where You Goin' Now	Damn Yankees
15	13	Johnny, Have You seen	The Rembrandts
19	14	Rump Shaker	Wreckx In Effect
22	15	Little Miss	The Spin Doctors
16	16	Keep The Faith	Bon Jovi
18	17	Who's Gonna Ride Wild Horses	U2
10	18	Free Your Mind	En Vogue
21	19	Diggin' In The Dirt	Peter Gabriel
4	20	Erotica	Madonna
23	21	Drive	REM
26	22	Faithful	Go West
---	23	Gangsta	BBD
27	24	Don't Play With My Heart	TAG
---	25	I Wish The Phone Would Ring	Expose
20	26	Rest In Peace	Extreme
---	27	Slow & Sexy	Shabba Ranks & Gill
24	28	Sometimes Love	Patty Smyth/Don Henley
17	29	How About That	Bad Company
25	30	People Everyday	Arrested Development



250 So. Water St. ♦ Prov.  
331-9073 ♦ 861-0026

UNDER NEW MANAGEMENT

**Tuesday**

**Bill Petterson**

**Fun, Pub Sing along, Rock and Folk**

**Wednesday**

**Perfect Circle Cover Band**

**Thursday**

**The Phobics**

**No cover before 10 p.m.**

**Friday**

**Good Question Rock**

**Saturday**

**Nasty Habits Rock**



## Battle for minority rights just beginning

*Key now is continued cooperation*

Students at the University of Rhode Island garnered the attention of the media, the public, and, most importantly, their own administration last week in their protest intended to eliminate racism on their campus. But the real work has only begun.

The students made fourteen demands to their administration, who reacted positively for the most part. Many of the demands set forth will be met, while others will be addressed at a later date. Some provisions which URI's administration will enact soon include making the Black Leadership Conference an annual event, hiring an affirmative action officer, and giving the Minority Student Services organization more space and funding. Termed as unrealistic were the renaming of the Multicultural Student Center for the organization Uhuru SaSa and Taft Hall to Malcolm X Hall.

Although Malcolm X left a legacy worthy having a building named for him, renaming a building would take that honor from another worthy figure. As seen as recently as year ago on this cam-

pus, the college takes great care and consideration in naming a building. The hall's name holds historical importance for U.R.I. and should remain the same.

Malcolm X's name, though, should not be overlooked as options for any unnamed existing building or any new buildings URI adds to its campus.

The overall state of minority affairs is a concern to most of the colleges and universities in the nation. The URI student protest is a step toward the recognition of racism problems, and hopefully will be a start in the direction of solving this long-standing problem.

When students earn the attention and cooperation of their administration, students have to capitalize on the opportunity and work even harder, so that their goals are reached.

While their efforts are to be commended, the students must now continue the work they started and pursue the goals with the same energy and organization they have shown in the past week. If they don't, they risk losing all they have already gained.

WHAT  
CAN I  
DO FOR  
YA,  
SON?!

DUE TO THE SUCCESS  
OF YOUR SHOWS, WE  
AT THE NETWORK WOULD  
LIKE TO OFFER YOU  
A SITCOM ON OUR  
FRIDAY NIGHT LINE-UP!



# • ROUNDTABLE DISCUSSION •

with the  
**STUDENT LIFE COMMITTEE\***  
for  
**COLLEGES and UNIVERSITIES in R.I.**  
\*THE STUDENT LIASON COMMITTEE OF THE BOARD OF GOVERNORS

The Committtee would like to hear the students' thoughts and ideas concerning the condition of the college in areas such as:

- Residence Halls
- Condition of buildings
- Fees
- Faculty
- Recreational activities
- Registration
- Academics

or anything else concerning you as a college student

Please join us for a lunch discussion on Thursday,  
**NOVEMBER 19 at 12 noon**  
in Donovan Dining Center

All students are welcome! Help make Rhode Island College a better place.  
For more information call Pam or Allison at x8034



## Psychologist to speak on social interaction

Rebecca Warner, Ph.D., will speak on "Sequential Analysis of Physiological Responses During Social Interaction" in Horace Mann Hall, room 193 at 12:30 p.m., November 18. All are welcome.

## Author to speak as part of "African-American Feminism" series

Barbara Neely, author of the first published mystery novel by a black woman and about a black woman, *Blanche on the Lam*, will speak as part of the "African-American Feminism" series. Neely, a Boston-area political activist, has written extensively about race and gender issues, including reproductive technologies. Her work has appeared in various anthologies and in feminist journals. Neely will speak

on Wednesday, November 18 at 12:30 p.m. in Clarke Science room 125. The event is free and open to the public. For more information, contact Maureen Reddy at 456-8337.

## Trip to Boston Museum Science scheduled

The Physical Science Club and the Campus Center are sponsoring a bus trip to the Boston Museum of Science on Sunday, November 22. The bus will leave the Student Union loop at 11:00 a.m. and return to campus at 6:30 p.m. The price of the trip is \$15.00. This includes admission to the exhibit halls, an Bo theatre movie, the Star Trek exhibit and round trip transportation. Wheelchair accommodations available upon request before November 18. Call 456-8034 for information. Deadline for ticket

purchase is November 19. Tickets are available at the Student Union Information desk.

## Theatre organization to meet

The theatre organization will meet on Wednesday, November 18, at 1:00 p.m. in Roberts Little Theatre, Roberts Hall. All are welcome to attend. For more information contact Steve Phillips at 949-4682.

## Education summit on gender equity planned by Rhode Island Commission on Women

The Rhode Island Commission on Women, in collaboration with the American Association of University Women-R.I., is sponsoring an Education Summit on Gender Equity. The summit will

be held in the State House of Representatives' Chamber on Wednesday, November 18, 1992 from 4:15 p.m. until 7:30 p.m.

The Education Summit is a celebration of the twentieth anniversary of title IX and will feature: *A Report Card for the 90's*: a report on the status of girls and women in Rhode Island education. This report will be presented to the summit by Freda H. Goldman, co-chair of the commission's education committee. Mary Longman, equity chair of the American Association of University Women, will report on the major findings of the AAUW's *How Schools Shortchange Girls*.

The public is invited. Reservations may be made by calling the commission at 277-6105. The registration fee of \$15.00 includes dinner.

**FREE**  
**1993**  
**"Student Travels"**  
**Magazine**

NEW!!

**COME BY or CALL FOR YOUR COPY!!!**

We can help you with:

- Student/Teacher Airfares
- Eurail Passes issued on the spot!
- Car Rental/Leasing
- Work Abroad • Study Abroad
- Int'l Student & Teacher ID
- Youth Hostel Passes
- & MUCH MORE!



171 Angell Street  
Corner of Thayer, Providence  
**331-5810**  
**Call Now**

## Advertisement

## Layout & Design assistants wanted

• Design and create every page of The Anchor

• Help complete every step in the layout process:

- Page Design
- Ad Placement
- Color Overlays
- Paste-up

• Learn how to use the Macintosh and the latest desktop publishing software.

Contact John or The Anchor or stop by the staff meeting, every Wednesday at 12:30 p.m. in Student Union Room 308

**GIFT COUPON**

# THE ANCHOR

*"Rhode Island College's weekly student newspaper since 1928"*

*proudly presents a gift coupon for you to use at*

# FRIENDLY'S

**2080 Warwick Ave., Warwick, R.I. 739-8190**

**SAVE**

**YOUR CHOICE OF ANY 1**

	<u>Value</u>	<u>You Pay</u>
Jim Dandy (Lg. Sundae)	\$3.25	\$1.00
Fribble (Lg. Milk Shake)	\$1.99	\$ .50
Cone/Cup of Ice Cream	\$1.21	\$ .25

Plus Sales Tax On Full Retail Price

Limit 1 Coupon Per Customer. Not Valid With Any Other Promotion. Expires 12-31-92

**Additional coupons with similar savings are available in the BEST BUSINESS Directory;**

**Plus 200 Merchants offering continual savings of up to 50% on everyday products and services.**

## Only \$5.00

**Order BEST BUSINESS Directories for you, your family and friends.**

BEST BUSINESS Directories are available for inspection and purchase at

**The Anchor Office**  
**Student Union Room 308**



# Drug and alcohol abuse prevention statement

## A message to the RIC community

"Drug-Free Schools and Campuses," authorized by Section 1213 of the Higher Education Act of 1965, and the amended by the Drug-Free Schools and Communities Act Amendments of 1989, require that institutions of higher education certify that they have "adopted and implemented a program to prevent the unlawful possession, use, or distribution of illicit drugs and alcohol by students and employees" in order to receive any kind of federal financial assistance after October 1, 1992. The following information presents the five requirements as outlined in the federal law and the college response to each requirement. Questions regarding the information in this statement should be addressed to the Office of Student Life in Craig-Lee 127.

**REQUIREMENT** - Standards of conduct that prohibit the unlawful possession, use, distribution of illicit drugs and alcohol by students and employees on the school property or as part of any school activity.

All students, employees, visitors, and guests (individuals) are prohibited from possessing, consuming, selling, or purchasing illicit drugs and/or alcohol\* on the college property or as part of any school activity.

\*Occasional exceptions to this policy which involve alcohol may be granted through the Director of the Campus Center. Note: Generally, penalties are doubled for second offenses. If there is death resulting from these offenses, the penalties are increased. Marijuana violators are guilty of a misdemeanor and may be imprisoned for not more than one year or fined not less than \$200. Second and subsequent offenses of simple possession may impose penalties of community services and drug rehabilitation programs.

R.I.G.L./21-28-4.01 (2).

### 1. DRUG- STATE LAW

Heroin and other Schedule I Drugs  
\*excluding marijuana

**USE** Imprisonment not more than 30 yrs. & a fine not less than \$100,000 or both-R.I.G.L. 21-28-4.01

**POSSESSION** (constructive) Imprisonment not more than 3 yrs. & a fine not less than \$100,000 or both-R.I.G.L. 21-28-4.01

**POSSESSION** (simple, unlawful) Imprisonment not more than 30 yrs. & a fine not more than \$100,000 or both R.I.G.L 21-28-4.01

**SALE** Imprisonment not more than 30 yrs. & a fine not more than \$100,000 or both-R.I.G.L. 21-28-4.01

**DISTRIBUTION** Imprisonment not more than 30 yrs. & a fine not more than \$100,000 or both-R.I.G.L. 21-28-4.01

Anyone over 18 distributing to anyone

who is at least 13 yrs. his junior shall be imprisoned to a term not less than 15 years and fined not more than \$500,000, or both-R.I.G.L. 21-28-4.07 \*Schedule I Drugs: Including but not limited to codeine, morphine, LSD, peyote, mescaline, some depressants and some stimulants.

### 2. DRUG - STATE LAW

Cocaine and other Schedule II Drugs\*

**USE** Imprisonment not more than 30 yrs. & a fine not more than \$100,000, or both-R.I.G.L. 21-28-4.01

**POSSESSION** (constructive) Imprisonment not more than 30 yrs. & a fine not more than \$100,000, or both-R.I.G.L. 21-28-4.01

**POSSESSION** (simple, unlawful) Imprisonment not more than 30 yrs. & \$100,000, or both-R.I.G.L. 21-28-4.01 (1) (a)

**SALE** Imprisonment not more than 30 yrs. & a fine not more than \$100,000, or both-R.I.G.L. 21-28-4.01

**DISTRIBUTION** Imprisonment not more than 30 yrs. & a fine not more than \$100,000, or both-R.I.G.L. 21-28-4.01 Anyone over 18 distributing to anyone under 18 who is at least 3 yrs. his junior shall be imprisoned to a term not less than 15 yrs. and fined not more than \$500,000 or both-R.I.G.L. 21-28-4.07

**NOTE:** Generally, penalties are doubled for second offenses. If there is death resulting from these offenses, the penalties are increased. Second and subsequent offenses of simple possession may include penalties of community service and drug rehab. programs-R.I.G.L. 21-28-4.01 (2)

\*Schedule II Drugs: Including but not limited to opium poppy and opium straw, coca leaves, some depressants and some stimulants, certain hallucinogenic substances.

**REQUIREMENT** - A description of the applicable legal sanctions under local, state or federal laws for the unlawful possession or distribution of illicit drugs or alcohol.

### 3. DRUG STATE LAW

Amphetamines, barbituric acid and other Schedule III drugs\*

**USE** Imprisonment not more than 20 yrs. & a fine not more than \$40,000, or both-R.I.G.L. 21-28-4.01

**POSSESSION** (constructive) Imprisonment not more than 20 yrs. & a fine not more than \$40,000, or both-R.I.G.L. 21-28-4.01

**POSSESSION** (simple, unlawful) Imprisonment not more than 20 yrs. & a fine not more than \$500, or both-R.I.G.L. 21-28-4.01

**SALE** Imprisonment not more than 20 yrs. & a fine not more than \$40,000, or both-R.I.G.L. 21-28-4.01

**DISTRIBUTION** Imprisonment not more than 20 yrs. & a fine not more than \$40,000, or both-R.I.G.L. 21-28-4.01 Anyone 18 over distributing to anyone under 18 who is at least 3 yrs.

his junior shall be imprisoned not less than 5 yrs. and fined not more than \$40,000 or both-R.I.G.L. 21-28-4.07 (b)

**NOTE:** \*Schedule III Drugs: Including but not limited to stimulants like amphetamines, metamphetamines, barbituric acid, phenobarbital and limited quantities of narcotics.

### 4. DRUGS - STATE LAW

Barbitol and other Schedule IV Drugs\*

**USE** Imprisonment not more than 20 yrs. & a fine not more than \$40,000, or both-R.I.G.L. 21-28-4.01

**POSSESSION** (constructive) Imprisonment not more than 20 yrs. & a fine not more than \$40,000, or both-R.I.G.L. 21-28-4.01

**POSSESSION** (simple, unlawful) Imprisonment not more than 3 yrs. & a fine not more than \$500 or both-R.I.G.L. 21-28-4.01 (1)(a)

**SALE** Imprisonment not more than 20 yrs. & a fine not more than \$40,000 or both-R.I.G.L. 21-28-4.01

**DISTRIBUTION** Imprisonment not more than 20 yrs. & a fine not more than \$40,000 or both-R.I.G.L. 21-28-4.01 Anyone 18 or over distributing to anyone under 18 who is at least 3 yrs. his junior shall be imprisoned not less than 5 yrs. and fined not more than \$40,000, or both-R.I.G.L. 21-28-4.07(b)

**NOTE:** \*Schedule IV Drugs: Including but not limited to methylphenobarbital, phenobarbital and barbitol derivatives.

### 5. DRUG - STATE LAW

Limited Quantity Narcotics & other Schedule V Drugs\*

**USE** Imprisonment not more than 1 yr. & a fine not more than \$10,000 or both-R.I.G.L. 21-28-4.01

**POSSESSION** (constructive) Imprisonment not more than 1 yr. & a fine not more than \$10,000 or both-R.I.G.L. 21-28-4.01

**POSSESSION** (simple, unlawful) Imprisonment not more than 3 yrs. & a fine not more than \$500 or both, except marijuana-R.I.G.L. (1)(a)

**SALE** Imprisonment not more than 1 yr. & a fine not more than \$10,000 or both-R.I.G.L. 21-28-4.01

**DISTRIBUTION** Imprisonment not more than 1 yr. & a fine not less than \$10,000, or both-R.I.G.L. 21-28-4.01 Anyone 18 or older distributing to anyone under 18 who is at least 3 yrs. his junior, shall be imprisoned not less than 1 yr. and fined not more than \$10,000, or both - R.I.G.L. 21-28-4.07(c)

**NOTE:** Anabolic steroids prescribed by a practitioner for the purpose of increasing mass, strength or weight without a medical necessity, is a misdemeanor and may carry imprisonment for not more than 6 months or a fine of not more than \$1,000 or both.

\*Schedule V Drugs: Including but not limited to drugs with limited amounts of narcotics, testosterone, and human growth hormones (HGH)

### 6. DRUG - STATE LAW

Alcohol, Violations for those under 21

**USE** First offense-\$100 fine  
Second offense-\$200 fine  
Third offense-\$500 fine  
R.I.G.L.-3-8-6(d)

**POSSESSION**  
First offense-\$100-\$500  
Second offense-\$200-\$500  
Third or subsequent- \$300-\$500  
R.I.G.L.-3-8-10

**SALE** (to minors)  
First offense-\$250  
Second offense-\$500  
Third and subsequent-\$750  
R.I.G.L.-3-8-5

**DISTRIBUTION** First offense - fine not less than \$250 or more than \$1,000 or imprisonment not more than 6 months or both.  
Second offense - fine not less than \$750 or more than \$1,000 or imprisonment or imprisonment not more than 6 months or both.  
Third and subsequent - fine of \$1,000 or imprisonment not more than 6 months or both-Any person convicted of a third or subsequent offense shall not have any fine suspended R.I.G.L.-3-8-11.2

**REQUIREMENT** - A description of the health risks associated with the use of illicit drugs and the abuse of alcohol.

The health risks associated with the use of illicit drugs and the abuse of alcohol include the possibility of hangovers, nausea and vomiting, tremors, sexual impotence, cardiovascular damage (including high blood pressure, deterioration of heart muscle, heart failure), respiratory failure, injury through violence or deliberately self-destructive behavior, depressed immune system, or memory impairment.

Because alcohol is a depressant drug, it ultimately slows down activities of the central nervous system - heart rate, pulse, and respiration. Continued drinking interrupts the brain's chemical and electrical circuitry and causes behavioral changes. The brain begins to malfunction, affecting the individual's psychological and emotional state as well as the ability to think, make judgments, see clearly, speak without slurring words, sit or walk without wobbling or falling down, and do mechanical tasks, like drive a car. When blood alcohol concentrations become very high, the brain's control over the respiratory system may fail, the body may lapse into a coma, the heartbeat may slow, and death may follow.

**REQUIREMENT** - A description of any drug or alcohol counseling, treatment, or rehabilitation or reentry programs that are available to students or employees.

Rhode Island College participants in the Rhode Island Employee Assistance Program (RIEAP). This program is a confidential source of help for all employees and their dependents who are having personal problems that include the use of illicit drugs and abuse of alcohol. Referral is available through Program Advisors, the Program Coordinator, the College Personnel Office or by calling one of the RIEAP offices directly. The College health medical plan provides coverage for counseling and treatment services.

When the college administration experiences situations in the workplace which are related to drug use or drug abuse, the college will take a proactive position with regard to direct intervention towards elimination of the problems.

Students may seek help with a drug or alcohol problem through a variety of offices on campus: Chaplains, Counseling Center, Health Services, Health Promotion, and Student Life. Any student may be referred for evaluation, counseling, treatment and/or rehabilitation either from a self-referral or as part of a sanction for violation of college regulations that was caused, in part, by the use of drugs or alcohol.

**REQUIREMENTS** - A clear statement that the school, consistent with local, state, or federal law, will impose sanctions against a student or employee who violates the standard of conduct.

The College is not, and cannot be, a sanctuary. As a public institution of Higher Education, its members are governed by civil law and especially the laws of the State of Rhode Island. Illegal activity by students or employees, whether on or off campus, subjects the individual to prosecution by civil authorities. In addition, the student or employee is subject to disciplinary action by the College when its special interests (e.g., the health and safety of its members, College property, and its educational programs) are jeopardized.

Students or employees found guilty are subject to sanctions that may include: censure, rehabilitation programs, expulsion from the College, termination of employment, and/or charged by the institution to the authorities for prosecution.

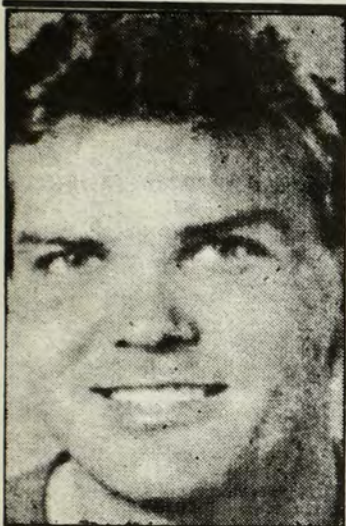
#### Biennial Review

Rhode Island College will conduct a biennial review of its drug and alcohol abuse prevention program to determine the program's effectiveness.

This review will have two primary goals: (1) to ensure that any sanctions imposed pursuant to the program are consistently enforced; and (2) to evaluate whether any changes are needed in the program and to implement such changes.

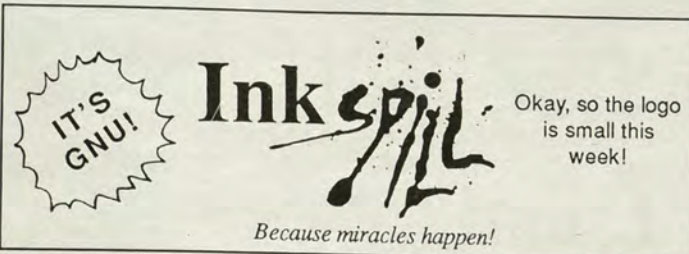
*This space provided as a public service by The Anchor.*





## Scott Zolak!

You just won the Patriot's first game of the season!  
What are you gonna do now?



### Vertically-challenged Riding Hood and the Dimensionally-enhanced, Uncooperative Wolf

A story by David Lineberger and Alan Gunther

Once upon a time -- which is unfortunate, because Once was much more proportionately-challenged than his friend Time, resulting in Time's permanent back injury, and ultimately, a rift in their friendship -- there was a person of the female persuasion with a severe height disadvantage identified by the name of Vertically-challenged Riding Hood. Vertically-challenged Riding Hood used to be called Vertically-challenged Red Riding Hood, but dropped the word "Red" from her name due to pressure during the McCarthy (not McCartney) era. In later years, "Riding" was dropped due to pressure from Tipper Gore and the PMRC, the obscene lyrics watchdog organization, and also due to protests from Helen Reddy. (You figure it out.)

We now return to the story, already in progress. We see our heroine, which the cops are taking away -- actually, we mean "law enforcement agents" (scientific name: *Donutetius Rex*) -- at a loss of £10,000 (that's ¥ 70,000 in dog years). There goes *that* Pell Grant.

We see our heroine. She looks nice today. That is to say, she has an appearance surplus, with a positive aesthetic upgrowth of 3.5% over last quarter's rate. (Thanks to Avon -- not the river in England -- which doesn't test its cosmetics on animals. (The river, however, does.)) She is wearing a beautiful gold lamé halter top by Owens-Corning, and a red (not Red) velvet riding hood decorated with a pretentious and fashionable painting of Elvis' Last Supper on the back, designed by Nerf, with a grant from General Dynamics. Her designer slacks are a warm shade of chartreuse, a color so aesthetically challenged, it was banned in 14 states. But that doesn't stop our daring fashion mogul, Vertically-challenged Riding Hood! Note, too, her mauve and aquamarine shoes, made entirely from vegetable matter collected from free-roaming plants which died from natural causes. She looks elegant and springtime fresh. Classic, yet modern. Rome, yet Pawtucket.

Oh, hell, who are we kidding? She's a real dog. Bow Wow!

(Editor's note: Due to contractual obligations, the wolf was unable to appear in this story.)



*Sal Mancini*

A.K.A.

"Vertically-challenged Riding Hood"

### "Group therapy, Part 1"

#### Warped World

Al Gunther



As they carried him out on the stretcher, they asked him if he had any allergic reactions. "Yes," he replied, "to Country-Western music."





Get Wicked!

With The \*U.M.D.

Let Us Cover Your Walls  
With Posters From:

East West Recording Artists

Da Lench Mob!

Just Listen For 411!



Wear Ya Hats!

If You Have A UMD Stitched Baseball hat Start wearin It For The Phat Hook ups! If You don't have one buy one now! Don't give us any sobb stories because we don't wanna hear it! Call the station for prices. 456-8288 that's 456-8288! Its an investment that pays for itself \*U.M.D. = Urban Music Department of WXIN fm!

Wreckin Sh-- in 92 & 93 and beyond!

# Crossword

## ACROSS

1 Where Jakarta is  
5 Where Valletta is

10 Singer Lane  
14 Translucent silica

15 Constellation  
16 Lack of means

17 Deadly nightshade  
19 Pleased

20 King of Persia  
21 Apt to vary

23 Cargo ship  
25 Plant

26 Gum-yielding trees  
29 Solar disk

31 Landon of politics  
34 Kitchen appliances

35 Grass used for hay  
36 Narrow inlet

37 Stormy  
38 — ballerina

39 Headliner  
40 Building wing

41 Xebec and dhow  
42 Was conspicuous

43 Apprehend  
44 Water buffalo

45 Bet  
46 Baking chamber

48 Famous  
50 One skilled in a trade

53 Woolly  
56 Camp beds

57 Campaniles  
60 Short jacket

61 "— en Rose" (Piaf song)  
62 Settlement in Greenland

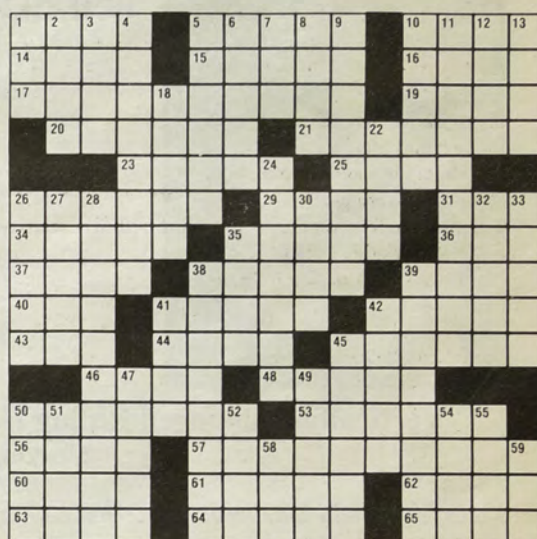
63 Eur. capital  
64 Indians

65 Valley

## DOWN

1 Chore  
2 Tip

3 Farewell, Brutus



©1992 Tribune Media Services, Inc.  
All Rights Reserved

**Solution  
on  
page 15**

4 In every direction  
5 Cover girls  
6 Came up  
7 — Yutang  
8 Very large quantities  
9 Curse  
10 Wrath  
11 Hung composer  
12 Spout of a vessel  
13 Whirlpool  
18 Angles on branches  
22 Lacoste  
24 N.J. river  
26 US biographer  
27 Sp. province  
28 Shape of some trousers  
30 Selleck and Smothers  
32 Forest vine  
33 Got along  
35 Kind of muffin  
38 Easily moved

39 Tailed  
41 Low voice  
42 Office worker  
45 Asseverates  
47 Fr. river  
49 Kukla's friend  
50 Maple genus  
51 News section for short  
52 — beer  
54 Slender bristle  
55 Of time  
58 56  
59 That girl

*Welcome Back Special*

**12" Medium Cheese  
Pizza  
only**

**\$3.88**

Plus tax

Limited Time Offer!

**Ronzio Pizza**

**Free Delivery  
274-3282**



## Help wanted Automobiles

**STUDENTS WANTED FOR MEDICAL RESEARCH:** Bradley Hospital sleep Lab seeks drug-free, healthy men ages 18-40 for a performance study. Includes one month on FDA approved anti-cholesterol medication and eight days of computer testing (no overnights). Compensation for complete study is \$625. Call Barbera at (401) 421-9440 from 8:30-5:00 for information.

**Sales/Telemarketing Evenings & Weekends.** Unlimited earning potential-All leads furnished. Casual working environment. Experience preferred, but will train the right person. 946-6622, ext. 192.

**Save big on spring break '93!** Jamaica, Cancun, Bahamas, Margarita Florida starting at \$119. Book early and save \$\$\$! Organize group and travel free! Call Sun-splash Tours today 1-800-426-7710.

**Looking for a top fraternity, sorority, or student organization** that would like to make \$500-1500 for one week marketing project right on campus. Must be organized and hard working. Call 800-592-2121 ext. 308

**STUDENTS or ORGANIZATIONS:** Promote our Florida Spring Break packages. Earn MONEY and FREE trips. Organize SMALL or LARGE groups. Call Campus Marketing. 800-423-5264.

**Spring Break '93**  
Panama City Beach, Florida Sales Representative needed to work with the #1 Spring Break Team, Travel Associates and Tour Excel. Sell the best properties on the beach: Summit Condominiums, Miracle Beach Resort Holiday Inn, Pier 99. Earn top commission and free trips. For more information call Jenny 1-800-558-3002.

**Part-time starting pay \$8.50.** Days, evenings and weekend available retail help wanted. All students may apply. Immediate openings. Call 946-0150.

**Travel Free! Sell Quality vacations** to exotic destinations! Jamaica, Cancun, Bahamas and Florida. Work for the most reliable spring break company with the best commissions/service. Sun splash tours. 1-800-426-7710.

**\$\$\$\$, Free Travel and Resume Experience!!** Individuals and Student Organizations wanted to promote SPRING BREAK, call the nations leader. Inter-Campus Programs 1-800-327-6013.

**DRIVER:** 21 years or older. Mon-Sat night, \$8.00/ hour. 333-1398, ask for Todd.

**We really need telephone volunteers** for Thursdays and Fridays. The hours are 10:00 to 1:00. Call Sr. MaryAnn if you can be of help (x8168, SU 300).

**ATTENTION BUSINESS MAJORS!** Distributors needed for nationally recognized product line. Get valuable hands-on experience in marketing and sales. Develop your own business. For further information, contact Laurel at 401-762-5627

**GOVERNMENT SEIZED vehicles** from \$100. Fords. Mercedes. Corvettes. Chevys. Surplus. Buyers Guide. 1-800-962-8000 ext. S-2229

## For sale

Smith Corona typewriter, like new. \$75 or best offer. 943-2778 between 6:30-9:30 pm

## Services

**Al-Anon Group Requested** The Chaplains' Office has received a request to begin an Al-Anon group on campus. Interested people can contact us at x8168. Sr. Mary Ann Rossi.

Do you want fast and accurate **WORD PERFECT** typing at \$2 page? Call **TERRIE** at 941-3914

**LSAT-GMAT-MCAT-GRE KAPLAN** The answer to the test question (401) 521-3926

**Halloween Costumes to rent.** Reasonable Prices. Custom made orders before October 17. Couple costumes also available. Call Jody, evenings, 738-7016.

**REMINDER-** All students who are learning **ESL-Conversion tables** - every Tues 6-7 pm. Academic Development Center, CL 224. Come Practice your language skills!!

**Type-Right Services;** Reports, Essays, Term papers. Fast, dependable, reasonable. 725-5462 725-4951

## GREEKS & CLUBS

**RAISE A COOL \$1000 IN JUST ONE WEEK! PLUS \$1000 FOR THE MEMBER WHO CALLS!**  
No obligation. No cost.  
You also get a **FREE HEADPHONE RADIO** just for calling  
**1-800-932-0528, Ext. 65**

## Lost & found

**REWARD!** Lost women's brown leather jacket with lots of sentimental value. 467-8075.

**LOST Fri. Oct. 16:**  
Set of keys with RIC keychain, '93

keychain, and senate keychain. Very lost without them. If found please call 353-2183 after 4 p.m.

## Personals

Mike Kolesnik, nice quaf dood!

To Matthew in Psych. 221 - are you a Psych. major? I am but unfortunately I'm not in your class. I'd like to meet you. Write back. Interested

To Alan Bonin, I've been watching you. I love your hair - it turns me on. Do you perm it? Let's get to know each other really well, really soon!! Write back. Chris

Jenny-poo! Pass the jellybean. Off-campus or on? -CP

Bunky & Bunkster I miss you. I want to BOND! HB

Dan, Nate, Shelly, and Jeff, Psycho in a truck no problem, psycho in can no problem. Bushes, problem. Next time I'll drive--you have insurance, right? Kim

KE pledges you did a great job! - You're awesome - Kappa welcomes you with open arms -HB

Kiff, I miss you. Call me sometime, dude. We had some great times. Let's do it again.

Belle - Love me like the dog I am.

Congrats to the KE pledges, you know it was all worth it. You did an excellent job. MTSND -Stacy

For those of you who smoke, smoking is going to be banned everywhere on campus, even outside. Go to the meeting Nov. 18 to say "No." -Bones

I want an ice cold juicy... now.

Clint L, do you throw a bang as good as you throw a ball? Your secret admirer

Someone is bucking for a promotion... must be that padderass Kevin Glode

To my sisters of Kappa Epsilon - I just want to say thanks for being so cooperative. I couldn't have done it without you guys. MTSND. -Stacy

Rhythm guitar player looking for band or jamming mates. Lots of drive, no ego trips. Call Joe at 231-7742.

Those KE girls have more person-als than members!

Bean, Kulk, Larry- Wee're not heech hiking any more- Wee're riding! I want to transfer to UMASS but I can't remember why. Trips are for kids and elevators aren't for me. Teddy Damn.

December 7th. The old get old and the young get stronger. The West is the Best. Dig my grasshopper, mama? Nine Volts Live returns for one night. Keep it here for the info. Cancel my subscription to the resurrection.

Shai -- sweet climbing! This weekend was real. It was great hanging in Rindge with Jean, and the other dudes. If you can scale a 60 ft. bridge, why not a mountain?

"Dave," I said, "Don't hate me 'cause I'm beautiful..." "I don't," he replied. I thought I was going to cry.

Can you believe I added a teaspoon instead of half a teaspoon?

P.D. If I'm not mumbling, I'm yelling and ranting and raving and carrying on and on like some sort of madman who just doesn't know when to.... sorry. Let's do lunch. j.

J. Thats high-larious, Larry. Hey, ya know, I was here only until 1 and I'm not even sleepy. What a waste of energy. j.

Patty Jean: Every time I try to write you a personal, it ends up sounding like a bad Journey song. I think that means something. j.

"She takes the midnight train going anywhere....."

"Don't stop believing....."

"She's got a way of showin' how I make her feel and I found the strength to keep on goin'" BJ 1981 me, now. (remember I don't write 'em, I just print 'em)

My Mom looked at me and said, "My brother was an only child." Huh? She also told me that it took two to gather stones...Al.

"No sir, I didn't like it."

Pam, you may be the cat's meow, (as in Cat Stevens) but please, no more James Taylor. Al

No more broccoli pizza.

Dear Jeff and Byron, bing! Bing! Bing! Bing! Just calling to tell you the mundane...Al

Alas the poor Vega hath passed on...

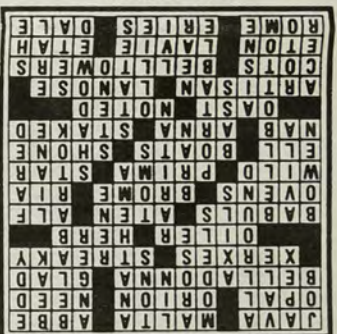
In this gorge fest in a horrid family restaurant, the waitress led the family to the table. "That's our regular table," the mother said, prompting Byron to scream, "You come back?!"

L. What's gnu? If you've got some time, I've got a phone. Mr. Unpretentious

Get this t.v. the hell away from me! All this news and views are beneath me, all I hear about are shots ringing out and gangs trying to put each others head out.

So, there's this big party in New York and all the big stars are there. Mick Jagger walks in the men's room and sees Hugh Hefner fighting with Dennis Weaver. He screams "Hey, Hugh- Get off of McCloud."

## ANSWERS





Here's What's Happening  
at the



Campus  
Center

**New York City Holiday Shopping Trip**  
**Saturday, December 5th**  
 bus leaves RIC at 7am  
 bus arrives NYC at 11am  
 bus departs NYC at 8pm  
 bus returns RIC at 12 midnight  
**Round Trip Coach Bus...ONLY \$27**  
 tickets available at Info. Desk

Noontime Series Presents:  
*Bill Petterson*  
 12-1:30pm in Donovan

Tuesday, November 17th  
**New Music Night Presents:**  
*Perfect Circle*  
 9pm in Coffeeground  
**FREE!!!**

Wednesday, November 18th  
**FUN FLICKS**  
 Come make a music video of your own!  
 10-4pm in SU Videoden

**ROUNDTABLE DISCUSSION**  
 with the  
**STUDENT LIFE COMMITTEE**  
 for  
**COLLEGES and UNIVERSITIES in R.I.**  
 THE STUDENT LIASON COMMITTEE OF THE BOARD OF GOVERNORS

The Committee would like to hear the students' thoughts and ideas concerning  
 the condition of the college in areas such as:

- Residence Halls
- Condition of buildings
- Fees
- Faculty
- Recreational activities
- Registration
- Academics

or anything else concerning you as a college student

Please join us for a lunch discussion on Thursday,  
**NOVEMBER 19 at 12 noon**  
 in Donovan Dining Center

All students are welcome! Help make Rhode Island College a better place.  
 For more information call Pam or Allison at x8034

**\*FOCUS\*FOCUS\*FOCUS\*FOCUS\***

Monday, November 16th  
*Understanding Your Dreams*  
 8pm in Thorp

Wednesday, November 18th  
*"What Can One Person  
 Do About Hunger?"*  
 1pm in SU 304

Wednesday, November 18th  
*Handling Stress Constructively*  
 8pm in Thorp

Thursday, November 19th  
*"World Hunger: An African  
 and Indian Perspective"*  
 12:30pm in SU 304

**\*FOCUS\*FOCUS\*FOCUS\*FOCUS\***

**DONOVAN  
 DINING  
 CENTER**

**MENU**

**DIAL-A-MENU**  
**x8293**  
**FOR THE**  
**COMPLETE**  
**DAILY MENU**

**Tuesday**  
**Breakfast**  
 Egg McMuffin  
 Sausage  
 Homefries  
**Lunch**  
 Steak Sand.  
 Chuck Wagon Veg.  
 Potato Wedges  
**Dinner**  
 Beef Stroganoff  
 Buttered Noodles  
 Sweet Peas

**Wednesday**  
**Breakfast**  
 French Toast  
 Bacon  
 Homefries  
**Lunch**  
 Chicken Marsala  
 Italian Green Beans  
**Dinner**  
 Roast Beef  
 Red Bliss Potato  
 Chopped Broccoli

**Thursday**  
**Breakfast**  
 Croissant Sand.  
 Sausage Patties  
 Homefries  
**Lunch**  
 American Chop Suey  
 Vegetable  
**Dinner**  
 Thanksgiving Dinner

**Friday**  
**Breakfast**  
 Omelet  
 Ham  
 Homefries  
**Lunch**  
 Fried Fish  
 French Fries  
 Coleslaw  
**Dinner**  
 Chef's Choice

**\*MENU SUBJECT TO CHANGE\***