

# THE ANCHOR

Volume LXXIII No. 8

October 26, 1976



SPENCER CROOK'S R.I.C.'S WATER COLOR EXPERT

(photo by Mark Clifford)



# RIC Health/Physical Ed Facilities Would Be Improved Under Bond Issue

Fitness and recreation, instruction and preventive health care are increasingly the concern of college students as well as the general population. According to William Baird, director of athletics at Rhode Island College, more and more people are discovering the benefits of good-conditioning.

What this means is that in addition to the normal demands upon college facilities created by the course offerings in health and physical education, demands by individuals and informal groups for space and time in the available facilities are increasing greatly.

At Rhode Island College, as at many colleges and universities in the nation, the access to equipment and to floor space is being sought by all segments of the community.

At RIC, more than 150 students are majoring in physical education. With the students in related majors in health and with the athletic teams and non-credit offerings in such sports as judo and karate, Baird estimates that between 600 and 800 students utilize the college's Walsh Center every day.

According to Baird the college has a community of nearly 10,000 people and many of them wish to use physical education facilities on a regular basis.

"We are having trouble scheduling all of the teams which need space for practice as it is," he noted. "Title IX has mandated an increase in women's sports on the intercollegiate level and the demands on our space will continue to increase as we offer more women's sports." (RIC has just appointed an assistant athletic director, Gail Davis, who will be charged with implementing women's sports programs).

Tennis instruction, Baird explained, is currently limited to outdoors. New England weather being what it is, there are severe limitations on the time when it is possible to teach tennis. Also he observed that physical education majors are required to possess swimming skills as part of their degree preparation. RIC has no pool.

"It's obvious that as things currently stand we aren't meeting this need adequately," he said.

RIC students currently are transported to neighboring institutions such as Boys' Clubs to fulfill the swimming requirements in their courses. Baird pointed out that RIC doesn't currently have the means of providing swimming time for development of additional skills beyond the curriculum requirements either. There is no

way that students interested in swimming therapy or life-guarding or water sports can obtain practice time and instruction at RIC.

"Rhode Island is an aquatic state," Baird said. "Many of the swimmers who go on to compete at the big schools in the East come from Rhode Island." In Rhode Island there are ten high schools involved in interscholastic swimming. If any of these students desires to study at Rhode Island College he must make a choice between the curriculum which attracted him to apply to RIC and the interest he has in swimming.

Baird went on to comment about the growing interest in gymnastics at RIC. "Our gymnastics teaching area is now on the second floor of the Walsh Center. The space is forty feet by seventy feet. When a class is in there using all of the equipment the place looks like a medieval torture chamber. There is absolutely no floor space to set up a trampoline or other auxiliary equipment."

Baird said that anytime there is a gymnastic match at the college all of the equipment has to be transported downstairs to the main floor of Walsh Center. Gymnastics is taught to physical education students as well as being a competition sport at RIC. Both men

and women compete for the college, he explained. Also RIC has been holding clinics in gymnastics for the schools in the state.

At the present time wrestling classes and practice at RIC must be offered in a converted classroom. RIC competes in wrestling on the intercollegiate level. Crowded conditions in the physical education facility have made it necessary for Baird to arrange to pad the walls of the classroom and hold workouts there. Several times players heads have gone through the soft wall-board used to form a partition.

To remedy the situation, RIC, through the Board of Regents, has requested funds in a bond issue referendum which will be presented to the Rhode Island electorate on November 2nd.

Authorization to issue bonds for a number of educational items will be requested under referendum number 13. The total amount, which will include items for URI, RIJC, and The Rhode Island School for the Deaf in addition to RIC, will be \$12.7 million dollars. RIC's portion of that sum will be \$2.6 million dollars.

Of that amount approximately \$2 million dollars will be devoted to building an addition to Walsh Health and Physical Education

Center. The addition will consist of about 60,000 square feet of new space. It will incorporate a swimming pool, indoor tennis courts, an indoor track, and handball and squash tracks. It will provide for indoor instruction in several sports and will provide space for the college's intramural and recreational programs. Swimming, field events, baseball, soccer and tennis will become year round events for students if the addition is approved. The instructional program will be strengthened, Baird feels, and the community will be encouraged to use the facilities on weekends and down periods in the schedule. He envisions the facility as well as a center of activities for RIC's 600 residential students who are on campus weekends and evenings as well as during the day.

If the referendum is approved, RIC will remodel Whipple Gymnasium, which now houses the recreation and intramural program, to provide additional facilities for the cramped theatre department. Renovations are also planned for Roberts Hall in the music wing to create more space for rehearsal and performance. A recent accreditation report cited lack of such facilities in the music program as an area which needed to be rectified.

## PRESIDENTIAL CANDIDATES

During the week of October 25-29 two on-campus candidates will be interviewed for the presidency at Rhode Island College. On Tuesday, October 26th, there will be an Open Session and Reception for Dr. Ridgway F. Shinn, Jr. from 2:00-4:00 p.m. in the Faculty Center.

On Thursday, October 28th, there will be an Open Session and Reception for Dr. Eleanor M. McMahon from 2:00-4:00 in the Faculty Center.

The Entire College community is welcome to attend these sessions to meet with Dr. Shinn, Dr. McMahon, and Dr. Pallone.

Presidential Candidate Dr. Nathaniel Pallone, Dean of University College at Rutgers University, will be on campus on Monday, November 1st, to interview for the presidency at Rhode Island College. The College community is invited to an Open Session and Reception to meet Dean Pallone from 2:00-4:00 p.m. on Monday, November 1st at the Faculty Center.

## The Way It Is: By Greg Markley

### The Critics of Eddie Beard: Voices of Revenge, or of Reason

With his magnificent primary victory now history, Congressman Eddie Beard seems destined to remain in Congress for as long as he wishes. In fact, some are comparing the former housepainter to the late Rep. John Fogarty and to Sen. John O. Pastore. Like the venerable Fogarty and the revered Pastore, Beard is being called "a legend in his own time."

Amid the thunderous applause for the Congressman, there are dissident voices struggling to be heard. Voices that question the sincerity, motives and inherent character of Eddie Beard. Voices that are as disturbing as they are bewildering. As such, they warrant consideration in this column.

The most recent controversy centers around Beard's misplacement of funds. Tom Iannitti, the Republican nominee for Beard's seat, has charged that several thousands of dollars from Beard's testimonial are unaccounted for, a violation of federal election laws. Iannitti's current accusation is one of many instances where Beard's integrity and ability have been suspect.

Perhaps the most persistent critic has been Thomas A. Logan, a former Beard supporter. Logan worked diligently and faithfully to elect Beard in 1974. Mr. Logan believed in the candidate so much that he postponed his own back operation just to ensure that Eddie Beard won election to Congress.

After Beard's triumph, Logan was refused a staff job on account of his (in Beard's words) serious criminal charges. In reality, Tom Logan had only committed a minor offense more than ten years before.

But the mere hint of a scandal associated with his office was sufficient for Beard to oust Logan and two others, more serious offenders from his staff. From that day forward, Logan and Beard have been antagonists, virtual enemies in a hostile personal war.

His friends say Tommy Logan is a good and decent man, the type of individual who makes our nation strong — an ambitious and forceful, yet compassionate and fair man. Although he had justifiable cause to malign and totally harass Eddie Beard, Tom Logan did not take cheap shots.

He did, however, work assiduously on the campaign of Marty Byrne, the unsuccessful challenger to Beard. When Byrne lost overwhelmingly, Logan gave up trying to convince the people of the 2nd district that Beard's vices outweigh his virtues.

Like a good loser, Logan resigned himself to accepting defeat. With his head still held high, the foe of Ed Beard looked forward to a fulfilling and exciting life in his new home in Warwick. He was expecting one of his friends in high places to offer him a job in the government of Warwick.

But Tommy Logan's dreams of attaining the "good life" were abruptly dissolved when the Congressman "became vindictive." Eddie Beard lambasted Logan for "conspiring with Tom Iannitti" to destroy his career. Logan was shocked at Beard's statement, because he had abandoned his quest for retaliation against Beard, and also because he was a staunch Democrat who would never campaign for the Republican Iannitti.

This, coupled with Beard's apparent attempt to prevent Logan from getting the promised Warwick employment, caused Tom Logan to finally divulge the complete story about the Congressman from the 2nd District. (As of this writing, the investigation of Logan's charges are still being conducted).

Another example of where Beard is alleged to be unappreciative is in the tale of Tony Pettella. Pettella worked for Beard in 1974, but Beard evidently was inconsiderate and ungrateful. To educate the voters about the "true" Eddie

Beard, Pettella ran ads in the Providence Journal.

Though he was not a rich man, Pettella sought to stimulate political involvement through the ads, and to diminish the impact of "the nation's number one enemy: apathy." He referred to himself as "A Concerned Citizen."

Pettella has recently passed away, but he has left us with a message: be wary of Eddie Beard, he may not be deserving of your trust.

Eddie Beard has been successful because he envisions himself as "the working man's friend." As a former painter, Beard has perpetuated the image of himself as an advocate for the common laborer, a vocal and determined spokesman for the little guy.

It would therefore seem hypocritical and inconsistent for Beard to politically harm and personally forsake a working man. But this is exactly what the controversial Congressman has done to him, a Mr. Aldrich J. DelSanto contends. DelSanto is an auto

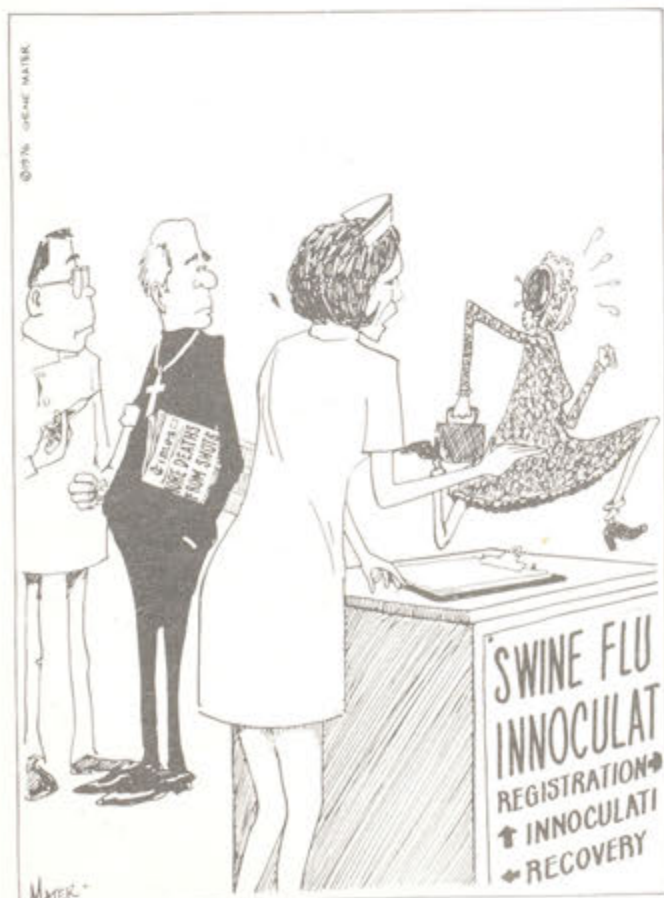
(Continued on Page 2)

### Firing Reserved by Board

The State Labor Relations Board has ruled in favor of two Dining Service employees who were fired recently, supporting their claims that they were being forced to perform work outside of their job classification. The Board ordered that the two be reinstated with one week's back pay.

The Labor Board's ruling will have significant effects on the structuring of personnel at the campus dining facilities according to reports. Because those classified as cook's helpers can no longer be made to work at the grill, cooks will have to perform all grill work. This will entail either the promotion of present personnel or the hiring of new cooks.

M. H.



"MRS. HIGGINS, COME BACK! FATHER CALLAHAN'S NOT HERE ON BUSINESS. HE'S HERE TO GET HIS SHOT!"





Dear Editor,

I am writing you concerning the article in the October 13 edition of the *Anchor*. Labor Board Hears RIC Cases. I was very displeased about the reporters' failure to obtain all the facts involved with this case.

It was stated in the article that the two Dining Centers employees were fired for using profane language and for insubordination. In reality, one employee was fired for swearing at another employee and for alleged insubordination to Peter Rogers. The other employee was terminated for allegedly attempting to stage a "walkout" and for insubordination to Gordon Sunberg.

The terminations were overruled by the Labor Relations Board and the two employees were reinstated and began work last Monday.

The reporter also made mention of a previous incident involving the same two employees who were suspended for refusing to work out of their job classification. It was stated that their suspension appeals to the Labor Relations Board were rejected and the suspensions upheld. The article failed to mention that at the time of the hearing the two employees and their Union considered the suspension as still. However, Monday, October 18, the Division of Personnel stated that the two employees were indeed working out of their classifications and with this information the employees will probably go directly to arbitration for exoneration and compensation.

In conclusion, I think the *Anchor* in the future should attempt to verify their facts, especially when peoples' jobs and their livelihood are at stake.

Concerned Workers,  
(name withheld on request)

REPLY:

Although we try to report each issue and event as thoroughly as we can, we do not always succeed in the best extensive reporting.

This is due to the nature of our resources and the fact that we are a weekly with a deadline five days prior to distribution.

We do not by any means practice selective reporting and will, whenever the situation arises, most willingly correct mistakes or print alternative viewpoints.

To the Editor:

In these trying times of rampant sexual perversion I find it difficult to understand why a decent school like RIC has to play host to a speaker representing the Prostitution Union of Massachusetts. In lending its podium, RIC gives this bizarre, mundane interest a grain of legitimacy of which it is obviously most undeserving and unworthy.

Prostitution is a "serious social issue" as reported in last week's *Anchor*. However, it is an issue that has no place on campus, especially under the auspices of the Woman's Alliance, which claims to be for women's rights. If the Woman's Alliance really was pro-feminine, the group would not advocate prostitution, because prostitution only promotes the view of woman as a mere sexual object.

Steve Sullivan

REPLY:

Your statement that these times consist of "rampant sexual perversion" is an opinionated, narrow interpretation of the liberal views and attitudes of sexuality that are prevailing to today's society. The term "perversion" implies "normalcy." Are you dictating what is "normal?" Personality psychologists would be interested in this!

Secondly, what do you mean by characterizing Rhode Island College as a "decent" school? Do you mean "decent" as in "good," or do you mean "decent" as in conservative? There is a difference. Brown, M.I.T., C.I.T., and U. California at Berkeley are

decent schools that are not considered conservative.

Thirdly, allowing views to be communicated does not lend "legitimacy" to the views. Therefore, "lending a podium" to a speaker encourages open communication and fosters a better understanding of the issues regardless of how "controversial." The "legitimacy" of this particular issue exists in and of itself since it is a fact of life and of society. And the "worthiness" of this communication is inherent for the same reason.

Fourthly, any "serious social issue" has a definite place on campus since providing a forum for such issues should be a prime purpose and goal of any educational institution.

Fifthly, it is a groundless presumption that RIC Women's Alliance is an "advocate" of prostitution. They are an advocate of women's rights and last week's discussion session pertained directly to women's rights.

### WRIC? An Opinion

As with anything else on campus, the Media Club cannot thrive without student support. In addition to membership in the club, support involves watching Forum and going to Forum with news that they may be interested in airing. Sue Baldyga said estimates put Forum's viewing audience at ten per cent of the RIC populace. Certainly Forum is worthy of a larger audience.

The Radio Club is in dire need of help. Most people on campus probably favor the idea of a radio station. If it is to become a reality, however, more people must back the club with their involvement and support. Mr. Budner said the main roadblock at this point is the lack of involvement. The more people there are to work with the club, the sooner a station can be established.

S.P.S.

# THE ANCHOR

Founded in 1928

The Anchor is located on the third floor of the Student Union. Our mailing address is:

THE ANCHOR  
Rhode Island College  
600 Mount Pleasant Avenue  
Providence, Rhode Island 02908  
Telephone, 831-6600, extension 257

The Anchor is composed weekly during the school year. It is printed by photo-offset by Ware River News, 4 Church Street, Ware, Mass.

Advertising is sold at the rate of \$2.00 per column inch. A 20 per cent discount is allowed campus organizations. Ads in "Free Classifieds" are free to all members of the RIC community. For further information, consult our advertising manager.

All editorial decisions for The Anchor are made entirely by its student editorial board. No form of censorship will be imposed. However, material found unacceptable or unsuitable in their opinion will not be published. All unsolicited material, including Letters to the Editor, must include the name and address of the author. Names may be withheld upon request. Views appearing in The Anchor do not necessarily reflect those of the administration, faculty or staff of the college. Unsigned editorials reflect the views of The Anchor editorial board.

### ANCHOR STAFF

Marcel Desrosiers  
Charles Arent  
Gail Sancho  
Mark Clifford  
Mark Hammond  
Kate Cross  
Jane Murphy  
Marian Avakian  
Barbara Sharkey  
Lyn Ucci

Executive Manager  
Managing Editor  
Advertising-Format Ed.  
Photography Manager  
News Editor  
Literary Editor  
Copy Editor  
Sports Editor  
Secretary  
Secretary

### Contributing Staff Members

Keith Brailsford, Susan Davitt, Bill DeTora, Paula Ewin, Willie Green, Richard Grzyb, Greg Markley, Pat Nasby, John Owens, David Payton, Steve Sullivan, John Toste, Cathy Wilson, Babbie Wark, Linda Sipala.

## Open Hearings



### for the Proposal on Revising the Late Withdrawal Procedure

Wednesday  
Nov. 3 2-4 p.m.

Thursday  
Nov. 4 1-3 p.m.

Horace Mann Hall 193

COLLEGE COMMUNITY IS URGED  
TO ATTEND

## The Way It Is

(Continued from Page 1)

mechanic who, along with Logan, Pettella and others, helped "create" the Ed Beard the Rhode Island public has come to know. DelSanto was one of the most ardent supporters of Beard since early in 1974.

During 1974-1976, Beard and DelSanto were the best of friends, virtual brothers who shared the same ideals. DelSanto, or "GeGe" as his admirers refer to him, loyally defended Beard at all times and with the greatest of dedication.

In July of this year, DelSanto was shocked to learn that Beard has "sabotaged" his campaign for a State Senate seat. (Allegedly by deliberately withholding qualifying signatures from DelSanto, who therefore failed to qualify). "GeGe" belatedly learned that "the hero of the underdog uses the working man for his own political expediency. Beard is not a true ally of the average wage earner."

DelSanto displayed his displeasure with his ex-crony by

supporting Marty Bynne in the Sept. 14 primary.

DelSanto claims that "success has changed Ed Beard into a power hungry man, an insincere person whose lust for power is only surpassed by his lust for notoriety."

DelSanto's views probably appear to be exaggerations, although his insight into the complex Beard is very provocative.

The largest mass adoration Beard elicits comes from the elderly. It is safe to say that 80 per cent of all senior citizens of his district cherish and support the U. S. Congressman. While Beard commands devotion from so many aged people, some elderly detest him for various reasons.

A Mr. and Mrs. Tanzi of Warwick were supportive of Beard, and thought he was practically the greatest thing that ever happened to R. I.'s elderly. After scrutinizing Beard's record when in Congress, the Tanzis began to doubt the genuineness of Beard's promises.

These two fine senior citizens say that Beard did not deliver, that his pledges to improve the lives of older Americans were just talk, with no action resulting. The Tanzis backed Gene McCaffery, who lost, but they are still crusading against Congressman Beard.

In 1974, Lou Goldman, an I.M.H. employee wholeheartedly endorsed Ed Beard for Congress. Goldman perceived Beard as a compassionate man who really intended to better the conditions at the I.M.H. Beard's one term has

produced nary a change at the Institute of Mental Health, never mind a tremendous betterment as Beard had promised in his campaign rhetoric of 1974. Goldman agrees with many voters, patients and employees of the medical center that Beard uses the emotional and sensitive issue of mental illness for his own personal advancement.

All of these comments reveal a side of Eddie Beard never before inspected by the people of this great state. Their opinions should be intermingled with the countless tributes Beard has received, to provide a composite view of this enigmatic personality.

The DelSantos, Pettellas, and Logans feel that they are out to set the record straight, to deliver Rhode Island from the evil congressman presently in our midst. These skeptics may be called jealous people (jealous of Beard's amazing rise to power), or they may be designated as vengeful souls out to get restitution from Beard. Either way the questions they have raised about Ed Beard's credibility boggle the mind.

Thomas Jefferson once said that in order to survive a democracy must exercise "Eternal Vigilance." It may be that Beard's detractors are out to convince a state too ignorant or too mesmerized to think properly that they are being led by a demagogue. If that is the case, then the lonely vigil now being performed has great significance to us all.

## INSIDE

Pg. 2: Letters to the Editor

Pg. 3: Happenings in Harambee

Pg. 4: Harlan Ellison to appear at RIC

Pgs. 6,7: Portfolio

Pg. 8: Media Club

Pg. 9: Classifieds

Pgs. 10,11: Sports



## Midterms Got You Down? POLISH UP YOUR READING-STUDY SKILLS



### A FREE Mini-Course

**TACKLING THE TEXTBOOK** How to make the most of the time you spend reading your textbook.  
**VERSATILE READING** Techniques for gaining information in less time.  
**VOCABULARY IMPROVEMENT** How to build your reading vocabulary.  
**THE NOVEL: READING FOR WRITING** Learn how to write your paper as you read the book.  
**TEST-TAKING** Improve your test-taking skills.

Each mini-course will meet for 2, 3 or 4 hours.  
Sessions begin the first week of November.

For more information — or to enroll —  
CALL 456-8071  
or  
drop by

## College Reading Services

Craig-Lee 224

HOURS  
9-12 a.m. M-F  
1-4 p.m. M-Th.

## Can you Afford Not to Volunteer?

By investing a few hours per week in a career oriented position you can supplement your education and increase your chances of employment when entering an over-crowded job market.

The R. I. Intern and Volunteer Consortium, coordinated by the Division on Youth Development, Department of Community Affairs, is designed to provide students with job experiences directly related to personal talents and career objectives. Student Volunteers and Interns (paid through the college work-study program) have been placed in hundreds of local agencies, both public and private, as professionally functioning staff members. Interns and volunteers may also receive course credit for their placements. The Consortium

will monitor your intern-volunteer work and give you documentation of that work for future reference.

Some of the most pressing needs for volunteers exists at W.G.N.G. to work in the radio station — a great opportunity for Communication Majors. Also the Institute of Mental Health is looking for students in psychology and sociology as well as English and history majors for public relations and research. Physical Education majors, are needed too, for a variety of recreation jobs. These are just a few of over 1,000 placements available in all academic areas for every RIC student.

If you are interested in volunteering for experience or possibly for academic credit contact Jo-Ann Smith, RIC Recruiter in the

C.D.C., Monday, Tuesday, Wednesday, 1:00-4:30 and Thursday, 2:00-4:30.

## Happenings in Harambee

Harambee is a Black organization on campus. It has been established since the late 60's, and as of the past month has been having trouble acquiring a room in the Student Union.

With the opening of the academic year, Harambee was faced with the problem of not having an office. Harambee's office was mysteriously taken away and reassigned to another organization, without proper cause and warning. This may have been a form of discrimination and with action on Harambee's part, the room has been restored. The organization is on the lookout for any other types of biased treatment which may be directed towards them. They will take any necessary action against such treatment to prevent the interruption of progress in the organization's future.

Harambee held its 1976 office elections on October 13th, and the results are Wayne Maddox as

President, Bill Taylor as Vice President, Rennee Perry as Treasurer, Melanie Davie as Secretary and Mr. Joseph Costa as Advisor. The organization's programming committee has scheduled a bake sale for October 26th, from 2-4, in the Student Union. Everyone's patronage will be welcomed and greatly appreciated.

The guest speaker of last week's meeting was Mrs. Jessie Dudley of the Cooperative Education Program at RIC. The program enables students to go out and work in his or her area of study and interest. This way the student can experience a relationship between his—her job and course of study. The program offers a minimal wage work experience rather than a volunteer job. College sophomores, juniors and seniors with at least a 2.0 grade average are eligible for the program. The businesses which RIC's Cooperative Education program deals with are interested in employing more minorities, (Blacks, Spanish speaking people, women), and have positions which are geared toward them.

Mrs. Dudley will conduct personal interviews with students on a monthly basis and make student referrals to businesses. There will be a recruitment drive on November 3, in Gaige Auditorium from 2-4 p.m. Anyone interested and who would like to know more about the Cooperative Education Program is encouraged to attend, or stop by the office in Roberts 107.

Willie Green



JEWEL PRODUCTIONS, LTD. and PIMLICO FILMS, LTD. present

## PETER SELLERS CHRISTOPHER PLUMMER CATHERINE SCHELL HERBERT LOM

in "BLAKE EDWARDS"

### The great "RETURNS:"

The swallows  
from Capistrano  
returned!

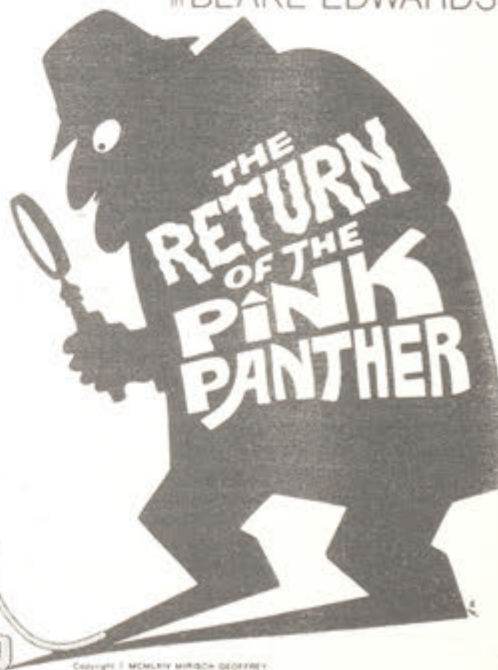
Gen. MacArthur  
returned!

The Fifties  
returned!

The Sixties will  
return!

And now  
Inspector Clouseau  
returns

...in the  
greatest  
return  
of them  
all-



Copyright © MCMXXVI MURPHY GEORFFREY. All rights reserved.

with BURT KWOUK / PETER ARNE • Produced and Directed by BLAKE EDWARDS  
Screenplay by FRANK WALDMAN and BLAKE EDWARDS  
Music by HENRY MANCINI Lyrics by HAL DAVID • Associate Producer TONY ADAMS  
Animation and Titles by RICHARD WILLIAMS STUDIO • Filmed in PANAVISION®

Original soundtrack recording available on RCA Records and Tapes

GENERAL AUDIENCES  
ALL AGES ADMITTED

United  
Artists

Sunday, Oct. 31, 7:30 Gaige 50\*

## FRESHMEN SOPHOMORES JUNIORS AND SENIORS

Jessie Dudley, Coordinator of Cooperative Education invites you to come to

**GAIGE AUDITORIUM  
WEDNESDAY  
NOVEMBER 3, 1976  
2 p.m. to 4 p.m.**

**TOPIC:  
COOPERATIVE  
EDUCATION**

**WHAT IS IT? WHAT CAN IT DO FOR YOU??**

**TALK WITH STUDENTS WHO HAVE COMPLETED COOPERATIVE ASSIGNMENTS. HOW DO YOU GET INVOLVED IN COOPERATIVE PLACEMENT?**



KAPPA  
AND  
RIC PROGRAMMING  
CO-SPONSOR

# 1/2 NIGHTER

October 29, 9 p.m.-1 a.m.  
Lower Level of the Student Union

Featuring: Continuous showing of  
X-Rated

## "THE GROOVE TUBE"

Music by Urban Renewal

Admission \$1.50 for RIC Students  
\$2.50 General Admission

Doors Open at 8:00 p.m.

## South Africa In Focus

On October 27, 1976, Dr. Bernard Magubeane will speak on: "An Urban Anthropologist Looks at South African Cities." Dr. Magubeane presently teaches at the State University of New York at Binghamton and is a specialist on African urban studies. His lecture is presented by the Speakers and Colloquia Committee of the Department of Anthropology—Geography and the RIC Committee on Urban Programs. The public is invited to Mann 193, 2-4 p.m., on Wednesday.

"Last Grave at Dimbaza" is a moving documentary type film that has already become a classic in the cinematography of South Africa. The film gives a vivid view of the African perspective on apartheid. The film is presented through the Speakers and Colloquia Committee of the Anthropology—Geography Department and the Social Science course Focus on Africa. The public is invited to Gage Auditorium, Thursday, November 11 at 4:15 p.m.

## RESEARCH

### Thousands of Topics

Send for your up-to-date, 160-page, mail order catalog. Enclose \$1.00 to cover postage and handling.

RESEARCH ASSISTANCE, INC.  
11322 IDAHO AVE., # 206  
LOS ANGELES, CALIF. 90025  
(213) 477-8474

Our research papers are sold for research purposes only.

## SEX Information and Referral Service (S.I.R.S.)

Hours For Your Convenience

Mon. thru Fri. 10 a.m.-4 p.m.

Facts — Referrals — Peer Counseling  
Discussion

Located Under Donovan

Drop in or Call 521-7568

Fran Stahlbush Co-ordinator

## Harlan Ellison to Appear at RIC

On October 27 and 28 Rhode Islanders will have a chance to meet and hear the author of "A Boy and His Dog," the editor of the massive science fiction anthology, "Again, Dangerous Visions" and the writer who created "I Have No Mouth and I Must Scream" and "From The Land of Fear." They won't have to wait for four lecturers to appear. All of the works mentioned (as well as numerous others) are the creations of Harlan Ellison. Rhode Island College's Distinguished Lecture Series, the RIC Science Fiction Association and the RIC English Department are cooperating to sponsor a two-day visit to RIC by the award-winning writer.

The holder of six Hugo Awards, the only writer to ever achieve this honor, Ellison has also won two Nebula Awards and is the only writer to ever win the Writer's Guild of America Award for most outstanding television script three times. Ellison has written for many many well-known TV series, done film scripts, and is creating pilots for future TV offerings. He has authored more than 800 stories, more than 30 books, and has been translated into 16 languages. One of his three Writer's Guild Awards

came for an episode of Star Trek entitled "The City On The Edge of Forever."

On his work, Leonard Nimoy has observed, "One of the many fortunate aspects of playing 'Mr. Spock' on Star Trek was that I got to perform some of Harlan Ellison's material. Harlan is imaginative, scary, poetic, thought-provoking and never, never dull."

At RIC Ellison will speak on the writing of fiction on Wednesday evening, October 27 in Horace Mann from 7 to 9 p.m. On Thursday evening, October 28, he will discuss writing for the screen and will bring a print of his film, "Demon With Glass Hands" to show the audience. This appearance will be in Fogarty Life Science Building and will be from 7 to 9 p.m. also. During the two days that he is at RIC, Ellison will also appear in creative writing classes, television classes, and theatre classes and will answer questions from students.

For further information contact Dr. Muriel Cornell, Rhode Island College, Department of English, Crag-Lee Hall, 600 Mt. Pleasant Avenue, Providence, R. I. 02908. Telephone 831-6600, extension 604



Science fiction writer Harlan Ellison, holder of six Hugo Awards and two Nebula Awards as well as the Writer's Guild of America Awards for the most outstanding television script three times. He will be on RIC campus on Oct. 27 and 28.

## Review of DEATHBIRD Stories

One of Harlan Ellison's latest works is a volume of short stories known as Deathbird Stories. This volume of short stories revolves around the theme of an individual's gods or spirits, and Ellison looks at them as the driving forces behind the actions of men.

It is an excellent fantasy collection of high emotional content. Ellison so involves his reader in his stories that the reader becomes emotionally drained. The author advises that the book not be read in one sitting and I most heartily agree.

In a book of this type one tends to have one or two stories which they feel really stand out. My favorite story is "Maggie Moneyeyes." It is the story of a Las Vegas call girl who, frustrated with life, turns to gambling and the slot machines. While playing an antique machine that takes silver dollars, Maggie has a heart attack. Her spirit flows

into the machine to await a savior.

Maggie's hero comes in the form of a gambling bum who plays his last dollar into the machine. He hits the jackpot with the first dollar and then, to the amazement of all, proceeds to get nine jackpots in a row. During the night Maggie comes to him in a dream claiming him as her savior and love. The ending is just too good to give away.

The entire volume is outstanding as there is enough science in some stories for the science fiction fan, while the emotional impact and surrealism will attract the fantasy following that Ellison is known for.

Harlan Ellison will be here at R.I.C. on October 27 and 28 for two lectures. The lecture October 27 will be from 7 - 9 p.m. in Mann with a reception following. On Oct. 28, the lecture will be in Fogarty at 7 p.m. also. All are welcome.

John E. Kokolski



## GET FUNKED UP

Help us celebrate our  
first anniversary all this week  
Come down for a  
glass of wine  
And  
a pair of  
**EARTH BRAND SHOES**

## GET THE FUNCTION WITHOUT THE FUNK.



**Earth  
shoe**

Earth Shoe

311 Westminster Mall  
Intown-Providence (401) 351 1890

Bring this ad  
and receive a birthday present  
with a purchase of a regularly priced  
pair of  
**EARTH BRAND SHOES**  
And see our complete line of  
**DANISH SCHOOL BAGS**  
And  
**AUSTRALIAN OUTBACK SWEATERS**

YOU CAN BUY AN EARTH BRAND SHOE

ONLY AT AN EARTH SHOE STORE

American Express • Bank Americard • Master Charge

Gift certificates available

open Monday through Saturday

Five West End Street, Tel. 681-5350

## VOTE

for

**Margaret Cann**

for

**U.S. Senate**

The vote they can't

ignore in

Washington and Wall Street

## Review of Idi Amin Dada, a Self Portrait

a film by Barbet Schreoder

by Carolyn Fluehr-Lobban,  
Assistant Professor of  
Anthropology and African  
Studies, Rhode  
Island College

The advertisement in the paper for Idi Amin Dada quoted New York reviewers who described the film as "terrifying," "blood curdling," "humorous" and "shocking." As an anthropologist specializing in African Studies and as one who lived in neighboring Sudan during the time Amin seized power in Uganda in 1971, I was interested to see the film. Frankly, the only "terrifying" and "shocking" aspects of the film are the undertones of racism which permeate the "self portrait" as seen through the western eyes of its French producers.

For the first several years I have been disturbed by the type of coverage Idi Amin has received in the U. S. press. In virtually every case he is portrayed by the mass media as a buffoon or fool, whether sending a telegram to Nixon advising him to resign or requiring British subjects to bow before him as the former colonialists once demanded of their African subjects. Such "antics" have become almost daily fare in the sensational items in our press. Since no other African leader receives such coverage in the American media, the message may be conveyed that Amin is typical of all African leaders, i.e., pompous, dictatorial, stupid and megalomaniacal.

The film, *Idi Amin Dada*, does not depart substantially from this stereotype, but adds another dimension which portrays African peoples and cultures in a negative light reinforcing stereotypes of "primitiveness." The filmed interview with Idi Amin is interspersed between footage of African wildlife and "Tribal" dancing, traditional markers of a "primitive," "uncivilized" society. Judging from audience reaction to the dancing and mock

spear throwing of Amin as he joined in the traditional dance, this part of the film reinforced the negative stereotype of African "savages" wildly dancing. The laughter at what is more properly described as a traditional African folk art underlined the racism and narrow chauvinism which is often bred into our people.

The film focuses on such "dictatorial" measures which Amin has involved since taking power as "forcing" the "naked tribesmen" of Karamoja to put on clothing and the banning of mini skirts. As one who has lived in Africa, I am aware of the sensitivity of many African leaders to the image of their countrymen as portrayed in the west, a package which usually includes unclothed people painting their bodies with only feathers and beads for adornment. (Meanwhile a U. S. presidential candidate is interviewed in a magazine which features naked white women in their "civilized" approach to sexuality). President Amin, along with other African leaders, wants to correct this image and emphasize the emerging reality of increasing numbers of Africans living in cities — not in the "jungles" and "huts" which is the tourists' view of Africa. The mini skirt has been a controversial item of clothing in many African countries where it is thought to be an immodest western import that it not compatible with traditional African values and morals.

Scenes intended to mock and ridicule General Amin actually revealed to this reviewer the highly developed sense of humor of the man. In one scene Amin contests with several of his officers in a swimming race — he wins by cutting off two of the men and then emerges from the pool with a wide grin proclaiming himself the winner. At one point in the interview he claims to have sent the Ugandan navy to Alexandria during the October 1973 Arab-Israeli war — when the interviewer

notes that Uganda has no navy, he smiles broadly and with a twinkle in his eye says, "that's our secret weapon."

Such humorous sidelights are intercut with statements exemplifying Amin's political philosophy, which is strongly pro-African and opposed to the racist regimes of southern Africa. He speaks also of the unity of all black people, whether in Africa, the Caribbean or in America. "In America," he says, "there should be a black President and a black Secretary of State, instead of Henry Kissinger." Many American people could well agree with these statements.

Finally, let me say that this review is in no way an unconditional defense of General Idi Amin. He is a simple military man brought to power in 1971 with the backing of the British and Israeli governments. Amin was to be the malleable puppet of these regimes (and the U.S. as well) and he was until 1973 when he began to exert his independence and expelled British and Israeli aids to his government. Rather, this review is intended to question the racist aspects of this portrayal of an African leader who really deserves no more attention than other leaders who rose to power through the military via a coup d'etat. The film is not only a pejorative portrayal of General Amin but also of the Ugandan people as well who are presented as a monolithic group using almost every negative stereotype which exists for African people in the west. It is interesting to note that while General Amin's political posture was still officially pro-west (between 1971-1973), there was little mention of the "antics" and "buffoonery" of Idi Amin in the western media. Now that he is no longer in the right hand pocket of the west, he has become the laughing stock of the U. S. press and films such as *Idi Amin Dada, a Self Portrait* receive wide distribution in this country.

## AWB

Sunday night was concert night at the newly reopened Leroy Theater in Pawtucket. The Average White Band was welcomed as the first of a long line of very talented performers and was hosted by a representative of Pawtucket Mayor Dennis Lynch. AWB was awarded a nice looking clock and a key to the city for promoting what the mayor's aide called "bringing people together." The group certainly did do that.

Preceding them was a group that goes by the name of Little River Band. Their music is, according to the guitar player, a type of ethnic music. Maybe in their homeland, Australia, it is called ethnic, but around here it is called R&B, jazz, and progressive country western. And it all is blended to just the

right consistency by the six musicians in the group. If you are interested in what you may have missed, they have an album out by Capitol, and also a '45' that they say is receiving good air time on F.M. radio all over.

It was too bad that the singer waited until the end of this band's gig to do his excellent, if exaggerated, impression of that musical wild man, Joe Cocker. Lead groups always have a tough time motivating a crowd, and leaving the light and funny stuff until the end does not expedite that process. The group did play well and their music was similar enough to what Average White Band plays to get the crowd cooking.

Average White Band did not disappoint its audience. The five Scots and one Englishman played their usual precise, harmonious music and brought the audience, once again, dancing and pressing over the orchestra pit wall to the edge of the stage. It is a visual as well as an auditory pleasure to be at an AWB concert. The mood of the lighting changed from subdued to blindingly brilliant with changes in tempo or when slipping into the next number.

AWB has a new album out of mostly old tunes played and recorded live during their last tour. We can look for new things from these sometime around February.

Jeff Page

## Join the Ford Bandwagon!



SATURDAY, OCT. 30, SUNDAY OCT. 31

PITCH IN AND JOIN OUR  
FINAL WEEKEND EFFORT!

MEET AT:

PRESIDENT FORD HQTRS  
120 WASHINGTON STREET  
PROVIDENCE 10 AM

BOTH DAYS

THE PRESIDENT FORD COMMITTEE: JAMES A. BAKER JR. CHAIRMAN, ROBERT C. HUGHES, TREASURER





# PORTFOLIO



## RIC Dance Symposium

Last Wednesday night marked the Rhode Island College Dance Company's Dance Symposium in which four college dance companies were to take part. Of the four RIC, Brown, Pembroke, and Boston Conservatory, only the RIC and Brown Companies participated.

The idea behind the symposium was that the dances presented were not finished products but rather pieces still in production. After each presentation, the dances were critiqued by Judith Roberts, former RIC Dance Company member, now at Northeastern University.

The RIC Dance Company presented two dances, one choreographed by Dr. Fannie H. Melcer and the other by student Company member, Kathy Mahoney. Kathy's dance was based on an abstraction of the game of chess. The dancers, attired in black and white, were directed into position onstage by Kathy herself, as the player. Once in position as pieces on the board ready for play, the dancers made a statement about chess as an intellectual game, after which the music started. At this, the different groups (in turn) did short dances representing their purpose. After the pawns, rooks, knights, and bishops finished, the stage was cleared and the queen performed a ritualistic dance representing her manipulative powers. The queen was then captured by the black knight, after which she "died". Soon afterwards, the remaining pieces appeared onstage in a frenzied dance, then left, leaving

the king alone to lament the death of his queen. At that, Kathy appeared onstage, the king and queen exited, and the triumphant "player" took a bow at her "victory."

Dr. Melcer's dance was inspired by a poem written by a RIC graduate, which she had heard read at commencement. The poem, called "Song for Women" was read during the performance. Four female dancers were involved, performing together as well as in trios, duets, and solos. Although the piece was unfinished and lasted only 4½ minutes, Dr. Melcer had created two versions. The first involved serious choreography, and the second combined this choreography with the humorous backdrop featuring dancers attired as a businesswoman, a Carol Burnett-type chairwoman, and a dancing ingenue.

The Brown University Dance Company presented one dance, based upon a Greek tragedy involving violence and revenge. Five female dancers performed the dance, using a blanket as a prop. The blanket was used well by the separate dancers and also served as a shroud and the enveloping arms of death.

All of the dances were well-performed. Although the criticisms could be well-applied, even the unfinished products provided excellent entertainment. Hopefully the two dances performed by the RIC Company will be presented in full during the annual Spring Concert.

B.W.

## Review:

### "Crime on Goat Island"

by Jane Murphy

"Crime on Goat Island", a play directed by Dr. David Gustafson, was presented October 14-17 in Roberts Auditorium. The production was one of extremes, having both serious flaws and major successes.

Susan Zeitlin's performance is the female lead, Agata, was excellent. Zeitlin's low, clear, controlled voice and striking features gave her a stage presence which was professional. Her mature portrayal of the lonely woman who in early middle age is seduced by a young foreigner was subtle and convincing.

The technical aspect of the play was outstanding as the set, by John Custer, very effectively recreated the interior of a Greek stucco-like house; lighting perfectly suggested the change of light as day became evening.

The play itself, billed as a "psychological and philosophical thriller" by Ugo Betti, was fairly

interesting but implausible. The idea of three sheltered women saying personal things to an intrusive stranger could only be accepted given a great deal of dramatic faith and fine acting.

Unfortunately Ms. Zeitlin delivered the only really fine performance of the evening. Sheila Baldaia and Kathy Mahony, as Pia and Sylvia respectively were competent, but not outstanding. The same could be said of Fred Anzevino who was just right for his role physically.

The male lead, however, was badly played by Dante Bellini. Bellini's Angelo lacked the smoothness — both vocally and stylistically — required of the part and his performance, though probably admirable for a freshman, gave the whole play a constant note of disharmony.

The play, which may have been psychological, but was far from philosophical, did entertain despite its weaknesses.

J.M.

TO M.D.S.

Beside a slow sleeping  
gentle man  
I lie  
in an attic bed on clean green sheets;  
star gazing  
at the white swirls of plaster  
peeling in the summer heat.  
I left  
the green sheet dirtied and  
paint chips on the floor  
and nothing more  
to say that I was there.

M.E.T.

## Student Activities Office Presents:

### The Cosmic Muffin

Wed. 8 p.m. Oct. 27  
Student Union Ballroom

**FREE!**



#### LECTURE TOPICS:

Astrology, Religion Art or Science?  
Do the stars influence YOUR life?  
How can YOU really use astrology?

The COSMIC MUFFIN is Darrell Blair-Edward Martinie. Darrell B-E. Martinie is:

... a master student of psychology, economics, political science, astrology... who began life with a psychiatrist father and a psychologist mother... was a commercial manager for the Bell System... and is now New England's foremost astrologer.

... one of only a handful of Bostonians certified an "Accredited Professional Astrologer" by the American Federation of Astrologers, whose code of ethics he staunchly supports and demands as a base for any astrological endeavor.

... on the faculty of the American Federation of Astrologers.

... a multi-dimensional personality whose daily involvement with life is built around people and astrology... including radio and television appearances, lectures, and personal consultation.

After a lecture with Darrell you'll certainly know yourself better than you did before. You and the MUFFIN will explore energies and curiosities which lead to an awareness about yourselves and the world you inhabit.

You may feel a bit... wiser. You'll definitely be more able to conduct yourself through an often bewildering world. You will suddenly find yourself understanding, internalizing, and applying the philosophy that Darrell does whenever he says: "A wise person rules the stars, a fool is ruled by them." Subjects usually discussed include... the hokum of newspaper astrology, a visual explanation of what astrology really is, what's rotten about your sun sign, a simple guide of bad times to make decisions or purchases.

most important... the questions and concerns of the audience combined with Darrell's enthusiasm for people and astrology, make every lecture (about 1½ to 2 hours) too short.





# The Great Movie Contest!!!

Are you tired of seeing a movie on campus that you wish was never shown? Have you ever said, "I wish they would show my favorite movie on campus." "Why can't they get some popular films here?" Or, have you ever wanted to strangle the person who chose those films?

The RIC Programming Staff has a solution to this dilemma. Below is an arbitrary listing of movies that should fill the bill. In addition, the Programming

Staff is presenting this in a contest form. YOU choose the movies for next semester, by submitting a ballot of your top ten choices from this listing, and if your choices are matched with the final choices for next semester, you will win a free pass to all the second semester Sunday Night Film Series.

Deadline for ballots is November 2, 1976. The Programming Staff will make the final decision for movies. The results and the name of the winner will be published in the

November 9 edition of the Anchor.

There are two prizes: The winner is the one whose choices match the Programming Staff, and the "booby" prize (a surprise package of movie stills) goes to the choices that are most 'off the wall.'

Send your ballots to the "RIC Programming Staff," c/o the Student Activities Office, third floor, Student Union. Don't delay — send your ballots in now!

## Pick any ten from below . . .

- |                                  |  |  |
|----------------------------------|--|--|
| 1. The Sting                     | 45. Sheila Levine is Dead and Living in New York | 87. Brian's Song                             |
| 2. Dirty Harry                   | 46. French Connection (Part I)                   | 88. The Guns of Navarone                     |
| 3. Summer of '42                 | 47. Bullitt                                      | 89. The Point                                |
| 4. Dracula                       | 48. Sleuth                                       | 90. What's Up Tiger Lilly?                   |
| 5. The 3 Musketeers              | 49. Lady Sings the Blues                         | 91. Marooned                                 |
| 6. Five Easy Pieces              | 50. Godspell                                     | 92. A Boy Named Charlie Brown                |
| 7. The Last Picture Show         | 51. MASH   | 93. Man of La Mancha                         |
| 8. Easy Rider                    | 52. The Godfather                                | 94. Jason and the Argonauts                  |
| 9. The Paper Chase               | 53. Play It Again, Sam                           | 95. Khartoum                                 |
| 10. Sleeper                      | 54. The Sunshine Boys                            | 96. The Taking of Pelham, 1, 2, 3            |
| 11. My Fair Lady                 | 55. Magnum Force                                 | 97. Thumberbolt & Lightfoot                  |
| 12. Hot Rock                     | 56. Woodstock                                    | 98. Harper                                   |
| 13. The Owl and the Pussycat     | 57. Bedknobs & Broomsticks                       | 100. Bonnie & Clyde                          |
| 14. The Professionals            | 58. The Mummy                                    | 101. The Valachi Papers                      |
| 15. The Reivers                  | 59. Billy Jack                                   | 102. The Andromeda Strain                    |
| 16. Cat Ballou                   | 60. Carnal Knowledge                             | 103. Asylum                                  |
| 17. Slaughterhouse Five          | 61. Kluge  | 104. Ben                                     |
| 18. The Taming of the Shrew      | 62. Machine Gun Kelly                            | 105. The Boys in the Band                    |
| 19. Dumbo                        | 63. Old Man and the Sea                          | 106. The Harrad Experiment                   |
| 20. The Wild One                 | 64. Fantasia                                     | 107. Little Big Man                          |
| 21. American Graffiti            | 65. Cactus Flower                                | 108. The Odessa File                         |
| 22. Paper Moon                   | 66. Lord Jim                                     | 109. Peter Pan                               |
| 23. Shaft                        | 67. Mackenna's Gold                              | 110. Night Watch                             |
| 24. Patton                       | 68. Night of the Living Dead                     | 111. The Stepford Wives                      |
| 25. Freaks                       | 69. Omega Man                                    | 112. Serpico                                 |
| 26. Westworld                    | 70. Phantom of the Opera                         | 113. Chinatown                               |
| 27. Dr. Strangelove              | 71. Hard Times                                   | 114. S.P.Y.S.                                |
| 28. Soyent Green                 | 72. Day of the Jackal                            | 115. Gone With The Wind                      |
| 29. Planet of the Apes (1)       | 73. Cool Hand Luke                               | 116. The Sound of Music                      |
| 30. The Longest Yard             | 74. Executive Action                             | 117. 1776                                    |
| 31. Judge Roy Bean               | 75. High Plains Drifter                          | 118. Death Wish                              |
| 32. A Man Called Horse           | 76. Joe Kidd                                     | 119. The Hustler                             |
| 33. Jesus Christ Superstar       | 77. J+O+E+                                       | 120. 3 Days of the Condor                    |
| 34. Blue Water, White Death      | 78. The Last Detail                              | 121. Shane                                   |
| 35. Airport '75                  | 79. Lords of Flatbush                            | 123. Anne of a Thousand Days                 |
| 36. Lawrence of Arabia           | 80. Monty Python & the Holy Grail                | 124. Mary Queen of Scots                     |
| 37. Jeremiah Johnson             | 81. Trash (Warhol's)                             | 125. Becket                                  |
| 38. The Don is Dead              | 82. Alice Doesn't Live Here Anymore              | 126. "HELP!" (Beatles flick)                 |
| 39. The Candidate                | 83. Blazing Saddles                              | 127. The Haunting of Hill House              |
| 40. That Man Bolt                | 84. Deliverance                                  | 129. The Fearless Vampire Killers (Polansky) |
| 41. Janis                        | 85. Terminal Man                                 | 130. All The President's Men                 |
| 42. Animal Crackers (Marx Bros.) | 86. Lord of the Flies                            |  |
| 43. 2001 Space Odyssey           |  |  |
| 44. Mahogany                     |  |  |

## Great Movie Contest Ballot

1. \_\_\_\_\_
2. \_\_\_\_\_
3. \_\_\_\_\_
4. \_\_\_\_\_
5. \_\_\_\_\_
6. \_\_\_\_\_
7. \_\_\_\_\_
8. \_\_\_\_\_
9. \_\_\_\_\_
10. \_\_\_\_\_

Return to Student Activities Office by November 2, 1976 no later than 5:00 p.m.





# THE MEDIA CLUB: AN INTRODUCTION

On the RIC campus there is a fairly new student-run organization that is making waves. The Media Club is its name and its primary purpose is to expose interested students to the fields of television, radio broadcasting and film making as well as to provide the RIC populace with news, information and entertainment.

The club has three divisions: the Radio Club, the Film Club and RIC Forum. The most visible at this time is Forum, which is a news and feature presentation aired on closed circuit television, campus channel eight, twenty-two times a week. Forum, the brainchild and outgrowth of the Department of Communications and Theater, was started in the Spring of '74 with a staff of two or three people. Since then it has grown both in staff and format. Presently there are ten people working actively with Forum.

The Film Club and the Radio Club were both founded late in the spring semester of '76. At that time the two groups formed a union with Forum and was chartered as the Media Club.

The Film Club is a group of people interested in making films. Presently plans are being enacted for a soap opera to be aired with Forum. It will take the form of five minute, continuing episodes and will be a take-off on the infamous, soapiest of soap operas, Mary Hartman. The club production will star two players in its first installment and possibly more in the future.

The third club is the Radio Club. Currently this club's solitary member, Irving Gordon, is in the process of trying to establish a radio station on the RIC campus. This involves time, money, effort, and various hassles inherent in an undertaking of such enormity. In order to set up a station, the interested party must first apply to the Federal Communications

Commission for a license and an FM frequency. (At the time of this writing no frequency was available but one could open up at any time.) Determination of frequency requires an engineering survey which must be paid for by the people requesting the frequency. Equipment must be had, and personnel must be recruited. Irving expressed the need for members and noted that it would be a good experience for anyone who might be interested in radio.

Each individual club has one representative to the parent club, which has a written constitution dictating policy for membership, officers, elections, and aims, and providing for growth and changes. Each of the separate clubs has similar constitutions that include duties of officers as well. The Media Club has a budget of about 1800 dollars which is allocated by the student parliament and comes from student activities fees. The Department of Communications and Theater also contributes a smaller amount of money. Mr. Lawrence Budner of that department is the club's faculty adviser.

In addition to student involvement there is also professional involvement in these clubs. Tony Giordino and Gordon Salisbury are engineers with first class licenses. Mr. Giordino serves as technical consultant to Forum and is credited with insuring technical precision for the production. For every story that appears on Forum, three are rejected, usually on the basis of technical flaws. One of the aims of Forum is to provide the viewer with a high quality broadcast. Sue Baldyga, Forum's news editor pointed to the good, extensive coverage of the shooting on campus last spring as evidence of Forum's capabilities. After getting details and exclusive statements from those involved, Forum contacted several

statewide news services to let them in on the story.

As with any group or organization, the Media Club experiences difficulties that are unfortunate, but not insurmountable. For example, Irving Gordon said that with only one person actively seeking and working toward a station, the establishment of one will take much longer; if only one person seems interested. Student Parliament and other revenue sources are less likely to support efforts with funds. It can work the other way, too: reportedly five people left the club last semester because they felt sufficient funding was not forthcoming. According to Mr. Budner and Craig Carter (Media Club vice president and Forum anchorman) a minimum of 15,000 dollars is needed to establish a decent radio station, but operating costs would be very low. Mr. Budner mentioned that P.C.'s radio station has offered to help with RIC's radio project.

Sue Baldyga of Forum indicated that people on campus are reluctant to be interviewed in connection with anything controversial because what somebody says on tape is indisputable, while the same thing said in an Anchor interview (for example) can later be denied on the grounds of misquotation or misrepresentation. Sue felt there was a lot happening on campus that would be in the news except for people's reluctance to go on record publicly. She said this situation has the effect of making Forum a promotional vehicle rather than a viable news service.

The people at Forum have run campaigns to promote their production with the hope of gaining a larger viewing audience. One effort's theme was magic, another involved a "wolfman," and an upcoming campaign will stress "you are news."

Marianne Caldarone, Media Club president discussed her role during an interview. As president, she coordinates activities among the separate clubs, tries to get people in the club to iron out problems, maintains and utilizes contacts for funding, and generally sees that everything runs smoothly. Marianne said that the club is always open to new members as well as new ideas and proposals.

Media Club vice president, Craig Carter, pointed out the opportunities for experience and job training that the club offers. He mentioned that Jon Henderson, the club's treasurer who also works with Forum, is WJAR's midday news' floor director.

Stephen P. Sullivan



URBAN RENEWAL: Will perform on Oct. 29 from 9 p.m.-1 a.m. at the Halloween Mixer in the lower level of the Student Union.

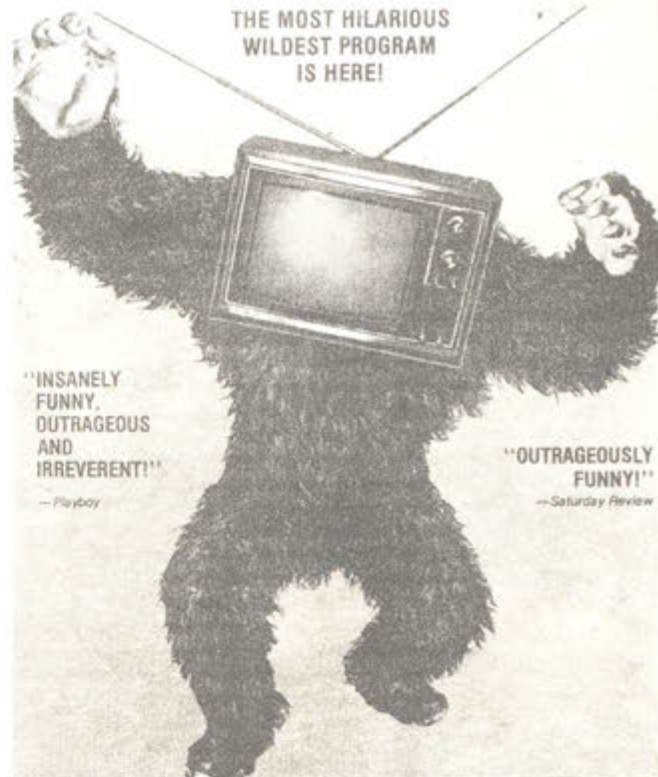
## Kappa and RIC Programming to Co-Sponsor 1/2 Nighter

The Student Activities Office will co-sponsor a Halloween Half-Nighter with Kappa Delta Phi Fraternity on October 29, 9-1 as a special Halloween Mixer combination Half-Nighter in the lower level of the Student Union. As a special added attraction the full length, uncut, unedited, X-rated feature "The Groove Tube" will be presented continuously on monitors during the Mixer. Special frills will include bagels, pretzels, and sandwiches served at a low cost. Music will be provided by Rhode Island's hottest eight piece showband, URBAN RENEWAL. Admission is \$1.50 for RIC students and \$2.50 general admission. Doors will open at 8:00 p.m.

RIC PROGRAMMING

PRESENTS

THE MOST HILARIOUS  
WILDEST PROGRAM  
IS HERE!



"INSANELY  
FUNNY,  
OUTRAGEOUS  
AND  
IRREVERENT!"

—Playboy

"OUTRAGEOUSLY  
FUNNY!"

—Saturday Review

## THE GROOVE TUBE

Produced and Directed by Ken Shapiro • Written by Ken Shapiro with Lane Sarasohn  
A K.S. Production • A Syn-Franks Enterprises Presentation • Distributed by Levitt-Pickman Film Corporation • Color

VIDEO TAPE  
NETWORK

Special X Rated Version presented at 1/2  
nighter. Every Friday Evening, October  
29, 9 p.m.-1 a.m. Student Union Lower  
Level.

### Notice

Dr. Andrew Kadak, Nuclear Information Officer for Narragansett Electric Company will be speaking on Thursday, Nov. 18 at 6:00 p.m. in Clarke Science Building, Room 210. He will discuss nuclear power production — problems and solutions — and will spend much of the time responding to questions. All are invited to attend. Coffee and donuts served.

## MAVERICK JEANS

Reg. Price \$14.99 **\$7.00**

**Preswashed or Corduroys \$9.00**

Reg. Price \$15.99 asst. sizes and styles

"Everyday is a sale day at"

737 Airport Rd.

Open 9 a.m. to 9 p.m.

**HANKS**

Warwick, R.I.

7 Days a Week

## ACADEMIC RESEARCH PAPERS

THOUSANDS ON FILE

Send \$1.00 for your up-to-date,  
192 page, mail order catalog.

11926 Santa Monica Blvd.  
Los Angeles, Ca. 90025

Original research also available

Enclosed is \$1.00.  
Please rush the catalog to:  
Name \_\_\_\_\_  
Address \_\_\_\_\_  
City \_\_\_\_\_  
State \_\_\_\_\_ Zip \_\_\_\_\_

## HARAMBEE

is sponsoring a

## "BAKE SALE"


Time: 10 a.m.-4 p.m.

Date: October 26, 1976

Place: The foyer in front of the book store.

COOKIES, CAKES, BROWNIES





# CLASSIFIED

For Sale   Wanted   Lost and Found   Personal   Notice

Phone: \_\_\_\_\_ Please complete and return to Anchor office.

## REMINDERS:



FINANCIAL AID applications for the 1977-78 school year will be available November 1. Deadline for returning these is March 1, 1977. November is not too early!

STUDENT EMPLOYMENT OFFICE has been making inquiries about the types and availability of Christmas jobs. You are encouraged to start looking now if you wish to work during the Christmas season. Call or stop in at CDC for information on employers hiring this year.

JOB HUNTING WORKSHOPS are held EVERY Wednesday afternoon from 2:00-4:00 in Craig-Lee 051 for students who are interested in developing resumes, learning about the how's and how-nots of letter writing and interviewing. Drop by this week!

## lost/found?

LOST: At Open House, Oct. 17 — 1 key ring and clip with 3 keys on it. If found please call 231-6384 or ext. 675 anytime. Vicki.



Recycle  
This  
Paper

## VOTE

## Socialist Labor Party

Ownership and control of industries by workers? On the job industrial democracy? Yes! Vote Jules Levin, Socialist Labor Party candidate for President. Call (401) 246-1585 for platform. Paid by RISLP, 13 Rosedale, Barrington, RI 02806.

## Notice of Class of 1978 Elections

An election will be held to select officers to represent the Class of 1978.

Positions to be filled are:

- ☐ PRESIDENT
- ☐ VICE-PRESIDENT
- ☐ SECRETARY
- ☐ TREASURER



Qualifications: Must be a member of the class of 1978. File declaration of candidacy in office of Student Community Government, SU 200. Deadline for nomination is Tuesday, November 9, at noon.

Election will be held in  
the Student Union 2nd floor  
on

November 10, from 9:00 a.m.-3:00 p.m.  
Student Community Government

## for sale



FOR SALE: MGB GT 1970, orange, good cond., overdrive, AM-FM, low mileage, 4 speed, must sell. Will take best offer. After 5 p.m., 723-4254. (1-2).

FOR SALE: '71 Super Beetle Convertible. AM-FM stereo, radials, good top, new paint, fog lights. 949-2490.

## wanted



WANTED: Roommate wanted, male or female. 1275 Old Baptist Rd., N. Kingston, R. I. \$100. per month plus half utilities. 828-1519. (1-2).

WANTED: Will trade one Allosaurus Dinosaur coin for a tyrex, Stergosaurus or a Coelophysis, (from post Cocoa Pebbles). Please reply in personals. Thank you! (1-2).

WANTED: Two radial snow tires 165X13". In good condition. Call 272-6729. (1-2).

WANTED: People-pagers, message takers and phone answerers! Anyone interested in working the front desk at Browne Hall, please contact Bobbie, Ext. 517 or 561 (day), 831-6608 (evening), or Marilyn, Ext. 835.

WANTED: Used clothes, dishes, furniture, etc. We will pick up free of charge and some items we pay cash. Give us a call: 274-2922 or 351-3457, anytime.

WANTED: Ride to Boston every or any Friday afternoon to arrive there before 5:30 p.m. I will share gas expense. Dorothea Copeck at 831-9761 or ext. 812.

## Notice



NOTICE: Rhode Island Women: "Profiles of Changing Social Values," a booklet by Sharon Hartman Strom has been made available through the Permanent Advisory Commission on Women in Rhode Island and The Coalition for Rhode Island Women's Year. The booklet is available at the Women's Alliance Office, 3rd floor Student Union Bldg., Room 305. (1-2).

NOTICE: The Students' International Meditation Society will hold a free introductory lecture on the benefits of the Transcendental Meditation Program on Tuesday, Oct. 26 in the SU, Room 309 at 1:00 p.m. and also at 8:00 p.m. Everyone is welcome.

NOTICE: Assertiveness Training Workshops are increasing in their popularity as a way of learning to stand up for yourself and becoming comfortable about saying "no." There will be a panel discussion by women who work as Assertiveness trainers on Wednesday, Oct. 27 at 8:00 p.m. at the Church of the Redeemer, 655 Hope Street. This discussion is being offered by the Women's Liberation Union of R. I. at their monthly meeting.

NOTICE: Immediate openings for volunteer and work-study students. Areas include education, phys. ed., psych., soc., and more. For further information contact Jo-Ann Smith, Ext. 563.

NOTICE: Sexual problems? Where do I go? What do I do? I haven't any money for a VD test? Peer-Counseling and help is available at the Sex Information and Referral Service. Drop in or call 521-7568.

NOTICE: Sex Information and Referral Service sign is missing off the building. If anyone knows the whereabouts of the sign or information to its recovery, please call 521-7568.

NOTICE: A workstudy student to provide clerical duties for KIP. Background in Social Science desirable. Immediate opening. Contact Tony Milano, CL 216.

NOTICE: Meeting of Women's Liberation Union of R. I. open only to women.

NOTICE: The philosophy club will meet Wed., Oct. 27, at 2:15 (during the free period), in Fogarty 120. The entire RIC community is welcome. Refreshments will be served.

## Personals

PERSONAL: Angela S — RIC's soccer queen, here's hopin' you score this week. Fud's was a blast — wasn't it? Have fun trying to figure out who I am. Love-5.5.

PERSONAL: Attn: Ms. Archeology major. You think you're making waves but you haven't made a ripple. Get off my back.

PERSONAL: To the Maytag Man: I new Maytag men were lonely, but do you have to use our agitators to get some excitement? Signed, Rose Butler Brown.

PERSONAL: Alcoholics Unanimous Meeting, Thursday night at 8:00. Rathskellar. Be there.

PERSONAL: To J.R. I had a great time singing and finding cows in your picture and particularly talking to you. You make a person feel wanted. Brown Dorm is empty without you. Signed, R. M.

PERSONAL: To Colacciaccia — I still haven't won the game yet, and Scarborough hasn't been the same since we left. Signed D. Mamafox.

PERSONAL: To Spic and Span (alias Wizard) and Elton Hope — we went to Penn. Signed: Kev.

PERSONAL: Stephen Day. You're so cute. How can we be lying when we're so sincere? Love K&R.

PERSONAL: To the remainder of the Pointer Sisters: Marry us both, it's the only way. Then we can-can and who'll need steam heat? Chubby Cheeks and Lug.

PERSONAL: Dear Maytag Man. You need to get your brain washed. Signed: The Clean Machine.

THE GAP

The biggest selection  
anywhere. In the most  
colors and sizes. We've  
got it. All in one place.  
Ours. Fall into the Gap  
today.

the  
gap

LINCOLN MALL



# R.I.C. SPORTS

## Salem Booters Rally For Win Over RIC

PROVIDENCE — Salem State rallied for three goals in the second half and defeated Rhode Island College 3-2 last Sunday in a college soccer game played before an "Open House Day" crowd of over 600 people on the RIC campus.

Center forward Mark Meserve was RIC's primary nemesis as he scored a goal and assisted on two others as the Vikings lifted their record to 6-3-1.

Trailing 2-0 going into the second half, the Vikings got on the board at 4:44 as Meserve best RIC goalie Olavo Amado with a 15-yard shot just inside the right post.

Barely four minutes later, Meserve noticed the RIC backs playing up too far and booted a lead pass that sent teammate John Bolduc in on a breakaway. Bolduc scored easily from about 12 yards out to tie the score at 2-2.

Then, with just over 16 minutes remaining in regulation time, Meserve led Len Mills along the right side and Mills booted a shot across the goalmouth, that bounced off the inside of the left post and over the line.

RIC notched its first goal at 33:23 of the first half as a Viking back

was called for a handball violation inside the penalty area and Domenic Petrarca booted the ensuing penalty shot into the upper left corner. It was Petrarca's 10th goal of the season and his 80th career point.

The Anchormen increased their lead to 2-0 with 2:10 left in the first half as freshman Matt Giarrusso beat netminder Ron Vangell to the lower left corner for his ninth goal of the season.

The Anchormen spent much of that first half in the Vikings' end of the field and forced six corner kicks, but were unable to capitalize on any of them.

Salem State (3): Vangell (goalie), Ward, Meserve, Azarian, Bolduc, Coleman, McKew, Charest, Donovan, Duffy, Quirk, McSweeney, Dooley, Mills, Carr, Kent, Wilson.

RIC (2): Amado (goalie), Guilderson, Anselmo, Contreras, Giampoli, Lamorte, Pincince, Berard, Giarrusso, Alves, Petrarca, Cresi, Schwab.

Salem State scoring: Goals — Meserve, Bolduc, Mills.

RIC scoring: Goals — Petrarca, Giarrusso.



RIC's halfback Bob Giampoli (no. 10) kicks the ball to teammate Marc Berard (no. 11) for a quick recovery.

(courtesy of RIC Athletics)

## Harriers Even Record With Three Straight Wins

by Jimmy Gallagher

After losing 27-29 to Quinnipiac College in a close meet on October 11, the cross country team from Rhode Island College has gone on to take three of their last four competitors to finish their dual meet and quadrangular meet season with a 6-6 win-loss record. It also appears likely that the Anchormen will retain their Rhode Island Small College Championship Cross Country crown when they meet Barrington, Roger Williams, and a tough Bryant team on October 27.

The RIC distance runners appeared strong at home as they hosted Plymouth State, Suffolk College, and Bryant on Saturday, October 16. The Anchormen's first home meet was run on the Trigg's Memorial Golf Course which is adjacent to the campus. The course was run in a series of figure eight loops and measures a precise 4.8 miles. It is the course that Coaches Dwyer and Gallagher hope to use when the Anchormen host the New England State College Athletic Conference Championships (NESCAC) on Saturday, November 6.

The big story for Rhode Island College in that quadrangular meet was their total team effort. Unlike other contests this year, men in positions 1-6 for Coach Dwyer finally put it all together. Plymouth State had two runners disqualified for cutting the course which made RIC's only loss of the day a one pointer, 36-37 to the visitors from New Hampshire. But Bryant College and Suffolk College were surprisingly defeated much more easily than was expected as the best they could manage were high scores of 60 and 85 respectively.

It was the Thornhill-Plante delegation from Blackstone Valley which provided RIC with a strong 3-4 finish and made the going rough for John Mendes from the Bryant Indians. Billy Thornhill was struggling with the first two runners of the race, Ron Stafford (the eventual winner at 25:09) and Jim Clarke from Plymouth. They both pulled away during the last mile. Seeing this, Ron Plante from Woonsocket went to work. He pulled away from John Mendes from Bryant and finished with a 45 second gap between he and Billy Thornhill. This was a good sign because 45 seconds has been the smallest deficit of time between RIC's first two men thus far.

Kevin Gatta finished sixth with a time of 27:19 as he passed a Plymouth and a Bryant runner during the last 1.8 miles of the course. Kevin's hard work and perseverance throughout the entire season is beginning to pay off in huge dividends. Each race is finished with intense stomach cramps which shows that extra effort has been an impetus to his improvement.

Danny Fanning, the ex LaSalle Ram finished eleventh which gave the Anchormen four finishers before Plymouth could put their fourth across the line. The eager sophomore went out quickly with the early pace at the mile with a time of 5:16 and proceeded to hole his position. Danny's goal in the

state championship will be to improve and better the Anchormen's score by defeating Mike Hill from Bryant College who finished just eight seconds in front of him in the quadrangular meet.

The two greatest surprises of the day came from freshmen Tom Flanagan from Swansea, Mass. and Joe White from Cranston. Flanagan and White were the fifth and sixth men for RIC and managed to beat the fourth man from Bryant, Barry Proctor, and gave the Anchormen a psychological edge going into the state meet. Tom Flanagan, a graduate of Case High School in Swansea, Mass. is bettering his high school form as he gets used to the longer distances close to five miles. In the quadrangular meet at Trigg's Memorial Golf course he ran a time of 28:22.

Joseph White, an Our Lady of Providence Grad., in 29:12. White seems to be breaking free of the six minute a mile pace he used to run and appears to be getting and staying in the action of the race more often.

On October 19, the RIC cross country team was even more impressive against Roger Williams. Even though a freshman, named Greg Vaslet gave Ronnie Plante fits throughout the entire race by capturing first place for the home team, the Anchormen were able to take advantage of RW's weakness in other areas by putting runners in the 2-3-4-5-6 positions.

RIC's first man, William Thornhill from Pawtucket, was unable to compete in the October 19 dual meet at Roger Williams because of a very important senior seminar scheduled at that time. Ron Plante was to be the top man for RIC.

At the mile and one-half mark it was Greg Vaslet of RW and Dighton-Rehobeth in the lead. Ron Plante, Dan Fanning, and Kevin Gatta, all of RIC, were bunched no more than thirty yards behind. Ben Helman, Rogers William's second runner was fifth and ahead of Tom Flanagan in sixth. Dave Kurt of RW was then seventh to be followed by Joe White of RIC.

For all intensive purposes, however, Tommy Flanagan and Joe White had the meet won for the Anchormen by the two mile mark. It was Vaslet and Plante running together. After Ronny, was an all RIC cast of Fanning, Gatta, Flanagan, and White. Both Joe White and Tom Flanagan went to work between the mile and two mile mark and passed RW competition, save for that which was badgering Ronald Plante at the very front of the race.

With only an 880 left in the race, Plante and Vaslet once again began running neck and neck. Finally Vaslet out kicked Plante to the finish to give Roger Williams their first, first-place finish ever against a RIC team. The rest of the Anchormen easily held their positions to give RIC a 20-35 victory and an even 6-6 record for the dual quadrangular meet season.

On Wednesday, October 27, the Anchormen face Bryant, Roger Williams, and Barrington again. This time it will be for the Rhode Island Small College Championship. Roger Williams will host the meet at Colt Memorial Park.



RIC's Marc Berard (no. 11), makes knee contact with the ball. (courtesy of RIC Athletics)

The following is a capsule summary of the quadrangular meet at RIC and the dual meet at Roger Williams.

October 16, 1976 Quadrangular meet vs. Plymouth, Bryant, and Suffolk, Plymouth 36; Rhode Island College 36; Bryant 60; Suffolk 85. Winning time 25:09. (Course record since this was the first meet on Triggs.) Distance 4.8 miles.

1. Stafford, Plymouth; 2. Clark, Plymouth; 3. Thornhill, RIC; 4. Plante, RIC; 5. Mendes, Bryant; 6. Gatta, RIC; 7. Myers, Plymouth; 8. Skinner, Bryant; 9. Grennan, Suffolk; 10. Hill, Bryant; 11. Fanning, RIC; 12. Piaspanin, Plymouth; 13. Flanagan, RIC; 14. Boothe, Plymouth; 15. Cunningham, Suffolk; 16. Byrne, Suffolk; 17. White, RIC; 18. Proctor, Bryant; 19. Gaynor, Bryant; 20. Packer, Plymouth; 21. Knight, Suffolk; 22. Diggle, Bryant; 23. Chalek, Bryant; 24. Eustis, Suffolk; 25. Owens, Suffolk.

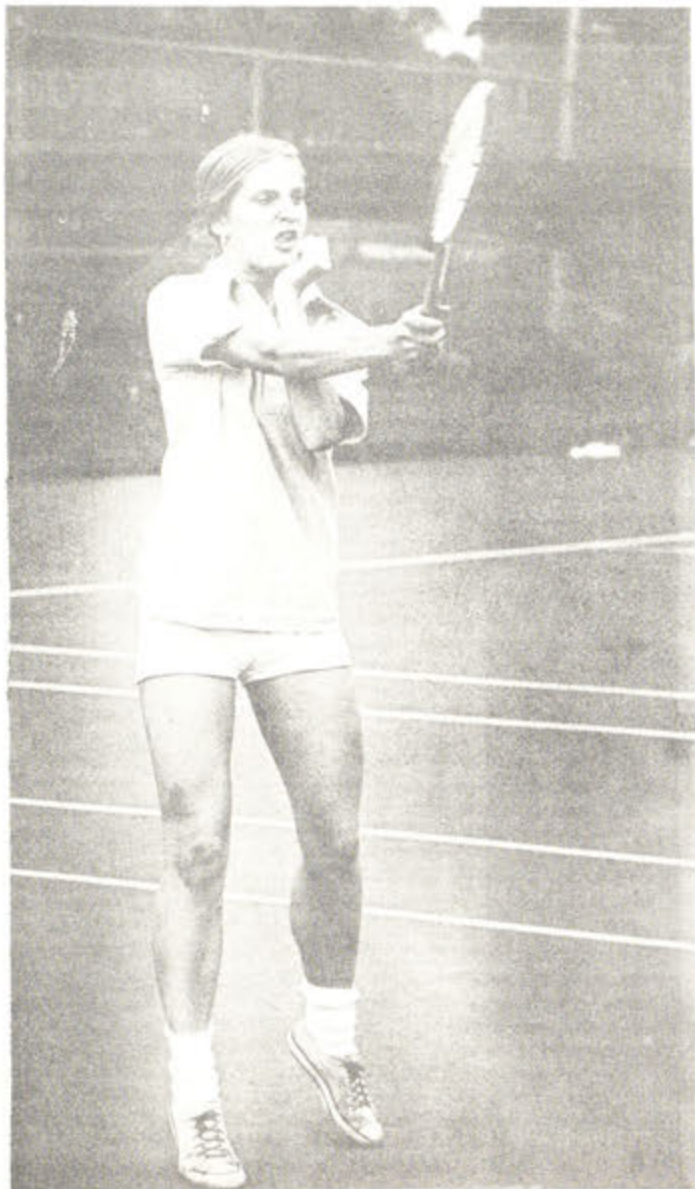
October 19, 1976 Duel meet at Colt Memorial Park against Roger Williams. Rhode Island College 20 — Roger Williams 35. Winning time 26:17 by Greg Vaslet of Roger Williams.

Distance 5.0 miles.

1. Vaslet, RW; 2. Plante, RIC; 3. Fanning, RIC; Gatta, RIC; 5. Flanagan, RIC; 6. White, RIC; 7. Helman, RW; 8. Kurt, RW; 9. Gracey, RW; 10. Gankuski, RW.



# WOMEN'S TENNIS



Cathy Berten, a freshman from Durham, Conn. (4th singles), won her games against Bryant and Stonehill playing no. 3. She's very consistent in her return shots.

(photo by Gordy Rowley)



First doubles — Phillis Manni, in foreground, is a sophomore from Cranston. Donna Bedard, in background, is a freshman. Both girls have made great progress.

(photo by Gordy Rowley)

— Women's remaining tennis games: —  
October 28, 29, 30 New England Championships  
Amherst College (Mass.)

## Hockey Club Preparing For Most Successful Season

by John Suchwalko

Once again fall is upon us and another exciting hockey season is just around the corner. This excitement is especially prevalent on the campus of Rhode Island College where the Hockey Club is having its most successful season. Last season, led by an explosive offense which averaged over six goals per game, the Anchormen posted a fine record of 12 victories, 5 defeats and 2 ties. The majority of last years club will be returning and should form a solid nucleus for the 1976-77 campaign.

One apparent change in the RIC hockey program is the coaching turn-over which has occurred. Last season, RIC was coached by Dr. Timothy Walter, a member of the RIC faculty. This year, however, RIC will be coached by Jack Cronin with Dr. Walter becoming the Clubs faculty advisor. The reasons for the coaching change were that Dr. Walter was unsure as to whether or not he could fit the coaching job into his tight schedule, and because Jack Cronin was highly interested in pursuing a career in hockey coaching. He is

very familiar with RIC's hockey program.

Jack has had a long and distinguished hockey career dating back to his days as the captain of Cranston West. After graduating from West, Jack went on to play two years of varsity hockey at West Point before transferring to RIC where, as a defenseman-right wing, he became one of the finest if not the finest player in RIC's short hockey history. With such a background, there can be little doubt that Jack Cronin will receive the maximum from his players in both playing ability and respect.

RIC has been preparing for the upcoming season by holding optional practices on Tuesday nights from 10:00-11:00 p.m. at North Providence Arena. Official practice starts November 9 with practice times being: Tuesday nights 10:00-11:00 p.m., Wednesday afternoons 1:30-3:00 p.m. and Friday nights 7:00-9:00 p.m. This season, all practices and games will be held at North Providence Arena. General Manager Steve Dumphy has completed RIC's 21 game schedule for the 1976-77 campaign which will begin with a home game on November 19 against arch-rival URI. It will end with the Southern New England Club Hockey Championship tournament which will be held on February 26 and 27. RIC is the host for the tournament, which is the first of its kind.

Anyone interested in trying out for the club or helping the club in some capacity should report to an extremely important meeting to be held on Thursday evening, November 4 at 8:30 p.m. on the second floor of the Student Union.

### Practice Notices

#### Gymnastics Team

All RIC women students interested in the Varsity Competitive Gymnastics team should attend a meeting during the free period (2:00) on Wednesday, November 3, 1976, in room 225 — Walsh Gym.

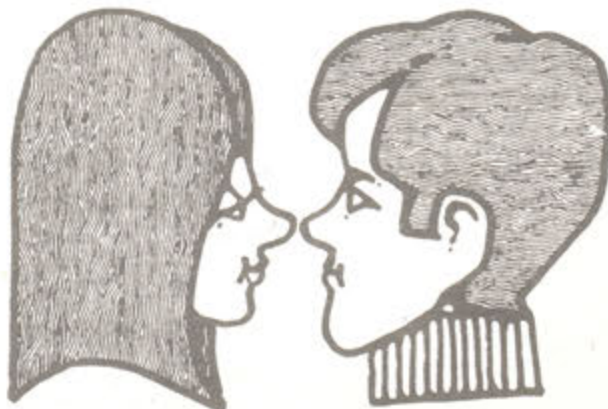
#### Women's Varsity Fencing

Practice Schedule  
Mondays and Wednesdays 7:00-9:00  
Thursdays and Fridays 3:00-5:00  
Come see us — discover fencing!

#### Women's Varsity Fencing-Scheduled Meets

1. Saturday, November 20 — 2 teams of 4; JV-V at MIT 1:00; MIT vs. Maine vs. RIC.
2. Saturday, December 4 — Individual Christmas Tournament; RIC Host — 4 fencers only. Open to all schools belonging to NEWIFA.
3. Saturday, February 12 — at URI 1:00, URI vs. RIC vs. Wellesley.
4. Saturday, February 19 — at Yale 12:00 team of 4, URI-Yale-RIC.
5. Saturday, February 26 — at Brandeis 1:00, Team of 4, URI-RIC-Maine-Brandeis.

let's get better acquainted.



Do you like sports? Then you'll love writing about it. See the Sport's Editor on the third floor of the Student Union in the ANCHOR office.



# IT WON'T HURT A BIT



## Attention Seniors:

The yearbook Photographer will be at RIC Nov. 15-19 for eight hours each day. The sitting is free, so don't delay! You must sign up two weeks in advance of this date to assure yourself a time slot on the portrait schedule. A desk will be set up in front of room 312 in the Student Union, so you can sign up for your portrait on Monday-Friday, 9 a.m.-9 p.m., two weeks before. The pictures will be taken according to the schedule you choose. Remember you must sign up two weeks in advance for your sitting in S.U. 312.

The yearbook staff hopes to see each and every senior on the 1977 Exodus. Remember YOU are a lasting part of your yearbook!

Gerry Friedman  
Editor — 1977 Exodus

HAVE YOUR SENIOR PORTRAIT TAKEN  
FOR THE YEARBOOK