

"Free Access to Ideas and Full Freedom of Expression"



The Anchor

VOLUME LVIV NO. 1

Established 1928

TUESDAY, JANUARY 29, 1985



Photograph by Bill Wilson, *Anchor* Staff Photographer.

REGISTRATION (THE PROMISED LAND)



Commentaries/ Letters

All the opinion's expressed in this section, with the exception of the editorial, do not necessarily represent the opinion of The Anchor.

Letters to the editor must be typed, doubled spaced, signed and contain no more than 300 words.

Editorial...

There are two times during the school year when it's really fashionable to complain about the registration process at RIC—you guessed it—during Fall Registration and Spring Registration.

Yet arguably these are probably the two times when the least can be done to rectify the situation. It would be far better if RIC students could hang on to that frustrating feeling and channel it into pushing for a change in the current process.

Assuming students are still irritated enough to fight for a better course selection process, the best time to work for a change is the present. If enough pressure was applied to the proper person, then the results would be, if not a better system, then at least an explanation about why the present setup is the only viable method.

The next major registration period isn't until the end of August, and much can be accomplished in seven months. But it takes a lot of concerned people working through the proper means to affect a major change such as this.

Obviously everyone is not going to band together and form a reactionary group to combat the evils of registration, but there are avenues to turn to which are not too painful and do not require too much of your time.

One such sounding board is Student Parliament. The members of this STUDENT organization are there to represent you! Make your feelings about registration known to your Parliament representative. Don't know who it is? Then stop by the Parliament Office on the second floor of the Student Union and find out. Parliament is very responsive to student concerns—providing they know what those concerns are. Don't expect that your Parliament representative can read your mind—communication is a two-way street!

Another way that would bring about change is if everyone who seeks a change in the registration process could write a letter to their department chair and the president of the college. Just like getting in contact with your Parliament rep, it only takes a few minutes of your time.

And there are many other ways to make your opinion known. The main point being that seasonal complaining is a lot like dust in the wind. It is not effectual and it doesn't accomplish a whole heck of a lot.

But letting your voice be heard does.

Better to light a candle than curse the darkness.

Dear Editor:

I would like to be a writer, but, where do I start? I would like to share my feelings with people, but, whom exactly do I want to reach? I have written several poems in Spanish and made various attempts to publish them. Unfortunately, they were rejected due to the lack of bilinguals at RIC. I should say RIC lacks "multilingual understanding." I was told that the number of Spanish-speaking people in RIC was too small to even consider publishing something for such a few. Therefore, since a very small portion of students would be able to understand my poems, they could not be published, unless they had a translation.

I say we are being excluded. Have any of you cared to learn something about our culture? Hmm!... I would say, perhaps one out of twenty. It is only when we try to publish our thoughts in our native language that we are supposed to follow rules and regulations to have some consideration for the majority. Have any of you had any consideration for the minority? Hmm!... I would say,

probably one out of twenty. It is true that we have come from far away to live in what you might call your land, but the reality is that this land is still the big "melting pot" and we are here to stay.

We have learned a lot from you and we have tried to understand the differences among us. However, we do not close our doors just because we find you different. On the contrary, we are attracted by your culture and want to share ours with you. We are willing to exchange with you philosophical and poetical thought so that we could, if not become a little wiser, at least live in harmony. The Latin American Student Organization tries to reach the RIC community by sponsoring a number of cultural events. Now, when the people do not respond to our call for establishing a friendly relationship, I ask, why should I write for the majority? And why should my poems not be published for the sake of those few who might be interested?

Maria E. Florez

Dear Mr. Thomas,

Our long held belief and pride in Rhode Island College leads us to write to you in protest and complaint about what is perceived by many to be a blatant attempt by the History Department of the College to unfairly present one view only of what has become the law of the land; namely, the U.S. Supreme Court decision in Lynch vs. Donnelly, the City of Pawtucket Nativity Scene Case.

Our area of concern is a long-standing one. We have been witness to a succession of "speakers" sponsored, apparently, in most part, by the History Department. These combined with interviews and reports in the "Anchor" with such partisans as the Judge in the Federal District Court in Rhode Island and the representative of the American Civil Liberties Union of Rhode Island certainly have given the perception that there is only one position on this whole matter. As a matter of fact we have, for many years, long suffered the intimidation, insensitivity, harassment and implication from such as the aforementioned, who have insisted that what they said was, in fact, the law. Now, even after the highest court in the land has vindicated our view we are still subjected to those who act as though the law were not decided. Have they done that or have you joined in that regard in any other decision handed down by the Supreme Court? We are not aware of any such instance. Yet, in this case, as though a vacuum existed, only the losers of the argument are asked for their losing opinions. That is rather interesting, in fact troubling, when it is a public educational institution such as Rhode

Dear Editor:

I read an article in the *Anchor* entitled *Down With the Top 40*; granted, I am a Top 40 fan, but I think the author of that article is too opinionated and uninformed about the subject, (at least in a reader's point of view).

One of the reasons why I disliked the article is because I happen to enjoy Huey Lewis and the News; they are good musicians. I say this because they appeal to people from ages 10 to 40, (if you went to his concert last August - you would know what I mean), and their appearance is a little more down to earth as compared to some of the Top 40 groups.

The reason I pointed out the two previous points is that I am willing to bet that the groups mentioned in your Top 40 article cater to a very small range of ages; high teens - low twenties, and as far as their appearance - they probably look like they belong on Twilight Zone reruns.

Island College that joins the effort.

The recent article in the "Anchor" entitled, "Church and State" contained in the edition of December 4, 1984, is not the only thing that disturbs and distresses us. (We note with interest, however, that the banner of the "Anchor" still loudly proclaims, "Free Access to Ideas and Full Expression.") What distresses us most, however, is the apparent, consistent lack of opportunity to afford all of those in a public institution's educational community the opportunity to hear a balanced approach to such an important topic.

We have long supported the right, even obligation, of educational institutions to present programs, speakers, views, etc. in complete freedom without interference. That is a given right. But what we are talking about here is a biased view on the part of some that precludes many from my sensitive, balance approach to truth. That insensitivity is a shame for all to witness who wrongly have presumed that those responsible for such programs would be fair and honest with them. The intellectual dishonesty of that approach is a disappointment to many who either attend or are connected with Rhode Island College.

We stand ready to appear at Rhode Island College, and request that you have us do so, in the event that the current "unfairness doctrine" becomes once again the "fairness doctrine" at Rhode Island College.

Sincerely,

Dennis M. Lynch, Cochairman
Citizens' Committee to
Continue Christmas

Another factor that made the article unenjoyable was the author's style; he was trying to be witty ALL of the time. (A small example in the previous paragraph) I think that this really killed the article, like he was practicing for a comedy act, and the article also lacks intelligent points. The author tells us that this band is good and this song is good but he never tells us WHY?!—(What type of music they play, what type of crowd they draw, why he thinks they are good).

I realize the *Anchor's* staff is quite small, but that is no excuse to print an uninformative article such as the one that appeared in your paper.

In quoting the author "Of course no one knew who they are" and "It's hightime you kids received a basic education in Real Music."

If the author keeps writing like this we will NEVER know who they are, and if the author is the teacher that will provide an educa-

The Anchor

"Founded 1928"

Editorial Board
Executive Editor
Robert Farley

Managing Editor
Jeanne L. Vetter
Assignments Editor
Scott Andrew Desjarlais

Business Editor

Michelle Cartier

Advertising Editor

Patricia Testa

Cultural Editor

R. Mark Auxier

Sports Editor

Mark Jacobs

Copy Editor

Mimi Audette

Production Editor

Chris Pierson

Public Relations Director

Lisa Lavoie

Photography Editor

Raymond Turgeon

Graphics Editor

Don Asmussen

Contributors

John Feeney, Steven Feldman, Bill Gardner

Executive Secretary

Rosemary Rodway

Secretaries

Sabrina Cipoletta, Diane Fagan, Kim Fiddler, Stephanie Johnson, Kim Watson

The Anchor is located on the third floor of the Student Union, Room 308. Our mailing address is:

The Anchor
Rhode Island College
600 Mount Pleasant Avenue
Providence, R.I. 02908
Telephone: 456-8281

For more information on advertising call 456-8280.

All editorial decisions for the Anchor are made entirely by majority vote of its student editorial board. No form of censorship will be imposed. However, material found unacceptable or unsuitable, in its opinion, will not be published. All unsolicited material including letters to the Editor, must include the names and address(es) of the author(s). Names will be withheld upon request. Views appearing in the Anchor do not necessarily reflect those of the college.

tion - the students have my utmost sympathy.

Doug Swans

Ski, Canoe, Bike Trips Offered at RIC

Skiing and canoe trips, a run-and-walk fitness program and bicycling on Block Island are some of the spring activities being offered by the Rhode Island College Recreation and Intramurals Department.

These special trips which begin on Feb. 14 with skiing at Waterville Valley in New Hampshire are open to the public. Full payment is due one week in advance of each activity.

The ski trip, which includes cross country skiing, is \$25. This includes rental, lessons and transportation. The bus will leave RIC's Whipple Gym at 5:45 a.m. For skiing and rental only, the cost is \$17.

Run-and-walk fitness starts March 3. Cost is \$5 and includes a workout stretching program, a running and walking log, and award system.

The Fitness Club on March 10 includes exercises, supervised weight training and a walking or jogging program. A personal fitness profile will be developed for each participant. The club meets Monday through Friday, 7 a.m., noon, and 4:30 p.m. Classes will be limited to 8-10 people and the cost is \$20.00.

Bicycling on Block Island will take place April 26 for \$15 (which includes ferry transportation). Bike rentals, if needed, are extra. Participants

are asked to bring their own lunch. The bus will leave Whipple Gym at 7:30 a.m. This trip is limited to 25 people.

The canoe trip is set for May 3 and 4. The cost is \$30 and includes transportation, food, rental of canoes and safety gear. Canoe from Hope Valley to Westerly, camping out for one night. A bus leaves Whipple Gym at 8 a.m. A limit of 20 people is set.

Other programs of an instructional nature are also being offered and will begin the week of Feb. 4. Those wishing to participate must register at Whipple Gym before the first class. A deposit of \$5 is required, but the first class in each is free and open for trial.

Offered will be noontime aerobics, Tuesdays and Thursdays, for \$15; beginning dance aerobics, Tuesdays and Thursdays, 5:30 p.m., for \$30; advanced dance aerobics, Tuesdays and Thursdays, 6:30 p.m., for \$30; and yoga free mini-workshops Jan. 29 and 30, which is an eight-week course; beginners Tuesday 7-9 p.m., advanced, Wednesday 7-9 p.m., fee, \$30; and aerobics, Mondays and Wednesdays, 6 p.m., fee, \$25.

For more information contact the RIC Recreation/Intramural Department, or call John Taylor, director, at 456-8136.

Poli-Sci Club Presents Forum

With the Inauguration and all the other ceremonial festivities behind us now the season of intense political debating is beginning and manipulating will soon push aside the superficial niceties recently exchanged among political actors. Controversial issues such as nuclear arms talks, budget cuts and tax reform will be the focus of many political discussions. In an attempt to take part in such discussions the Political Science Club is sponsoring informal forums which will center on current political issues. Students, faculty and staff are

welcomed to attend these sessions which will be held during the free period at 2:00 on alternating Wednesdays. As noted, the structure of the forums is informal and will allow everyone the chance to voice their opinion on a particular issue if they wish to do so. Once again all are encouraged to attend these forums in order to enlighten the rest of us regarding such crucial dilemmas confronting our nation today. Details on the exact dates of the forums will be announced soon.

Washington Internship Program Offered

Rhode Island College participates, as in past years, in the Washington Internship Program. Under the auspices of the program, six to nine students will be selected this semester to spend one week in the office of Senator Claiborne Pell. This program has been of considerable benefit to our interns.

In 1985 Rhode Island College will place students the weeks of February 25, March 25, and April 1. Stipends allocated by the Student

Parliament will be available to defray some of the interns' expenses.

Interested students may obtain applications from Mrs. Sue Hagonian in the Political Science office, Craig-Lee 210. Completed applications should be returned to Professor Winter, Craig-Lee 213, not later than February 4, 1985. For further information about the program contact Professor Winter.

Eating Disorder Group Starts

The Providence Center for Counseling and Psychiatric Services is currently accepting referrals to its Eating Disorder Therapy Group for students.

Ms. Julie Hassett, ACSW and Ms. Judith Ferris, ACSW will co-lead the group which will run consecutively for ten weeks. Medical consultation will be provided by Dr. Francis X. Haines.

This group is a short-term treatment program whose goal is to help those suffering from Bulimia and to learn more effective ways of coping with this disorder. An initial pre-group interview is required. Appointments can be made by contacting The Providence Center's Appointment Coordinator at 274-2500 between 8:30-4:30, Monday through Friday. The pre-group fee is \$10.

Medical Scholarship Offered

Applications are now being accepted for the annual \$700 scholarship given by the Rhode Island Lung Association in honor of Harry L. Gardner, who served for 50 years as a director of the association—21 of those years as president.

The scholarship competition is open to any resident of Rhode

Island graduating from a local institution who has been accepted by an accredited medical school and is able to demonstrate financial need.

Applications and complete information are available from the Rhode Island Lung Association at 421-6487. The deadline for application is March 31, 1985.

Thorp Hall Director "Fills in" Well

By Bob Farley
Anchor Staff Writer

Thorp Hall Director Dave Ward is only going to be in his position until the end of this semester, but make no mistake about it, he certainly is not at the crossroads of his life.

Ward, a 1983 graduate of RIC and a biology major, replaced former director Stephany Keans in October when Keans left for a position at another college. "The Housing Office had very little time to find a replacement, so they called former R.A.'s (resident assistants) to see if they could fill in until January."

After Ward was appointed to the position, the Housing Office conducted a search for a permanent replacement, but the applicant pool did not meet up to expectations. He was then asked to continue in the job until the end of the school year.

"It's good that I am here for the rest of the year. It would be detrimental for the residents in Thorp to have three different hall directors in one year."

Besides being a former R.A., Ward has held many positions at RIC and has a great deal of knowledge about the campus. While an undergraduate, Ward worked in the dean's office, served on Student Parliament, and was an Encounter (now Orientation) sponsor for two summers.

Ward is pleased with how his temporary assignment has worked out. "Thorp has a good R.A. staff, very diverse, and a strong hall council. The residents are much more responsible than they were a few years ago. Careless damage is



Dave Ward (Photo by Bill Wilson).

down in all four dorms."

There have been some adjustments. "As a hall director, you are on the job 24 hours a day. There's not much privacy, but I really don't mind because most students use discretion, they don't usually come knocking at my door at seven o'clock in the morning."

I thought some people might be upset because I am male (Thorp Hall is an all-female dormitory) but there were no problems. It's one thing to move into a dorm you know has a male director; it's another thing to stick a male hall director in the dorm during the middle of the semester."

Another big change has been the new alcohol policy. It's very unpopular and hard to enforce, but we do our best! My first week here I had to ask a girl to leave because of a violation of the policy."

The people I feel sorry for are the ones who are old enough to drink. Because the dorms are dry for everyone, regardless of their age, I think we are forcing the older crowd off campus. That certainly doesn't help promote the sense of

community that we are trying to develop here."

Overall, it's a good policy. If students are not old enough to drink anywhere else, why should they be allowed to drink in the dorms? People don't like it, but it's a necessary policy."

Although he will only be in the position a short time, there are some goals which Ward would like to see accomplished. He would like to increase awareness of hall council, introduce more academic programs and, as the director of Central Desk, make sure that it continued to run smoothly.

Next fall, Ward is entering Tufts University Dental School. Asked why he waited two years before he went to dental school, Ward said, "Applying to dental school is a time-consuming proposition, and it costs money to apply, visit and interview. I really don't see how graduating seniors do it."

Well if Dave Ward's performance this year is any indication of his "fill-in" talents, then his future patients have very little to worry about!

Handicap Transfer Complicated

By Bob Farley
Anchor Staff Writer

No more handicapped parking spaces in the Student Union parking loop? Have no fear! The college has been replacing signs on campus over the break, and plans to transfer the handicapped signs from the south end of the Student Union parking loop (near the entrance to the lot) to the north end.

According to Richard Comerford, Director of Security and Safety, "The signs are being moved in order to afford handicapped students better accessibility to Donovan Dining Center and the Student Union."

Problems arose when a piece of the auger bit broke while the contractor was drilling holes for the sign posts near Fogarty Life



(Photo by Bill Wilson)

Science Building. The new holes for the handicapped signs in the Student Union parking loop had not been drilled when the mishap occurred.

Another unexpected complication has been the recent snow and

cold temperatures. Joseph Hickox, Assistant Director of Security and Safety said, "The cold weather has frozen the ground solid; making it difficult to dig. The contractor has the signs and will install them as soon as possible."

Yoga Workshops Offered

Rhode Island College Recreation Department will offer a free tension-control yoga workshop to the public on either Tuesday, Jan. 29, at 5 p.m. or Wednesday, Jan. 30, at 7 p.m.

RIC instructor Marjorie J. Lynch will demonstrate and discuss

tension control yoga techniques that can be utilized in managing stress. Stress and tension can cause tightness and pain in the muscle system, and these conditions are referred to as the "psychosomatic effect" of the mind on the body, according to Lynch.

In a tension-control yoga program the subject learns how to relax, breathe, un-tie the muscle knots and control the mind, says Lynch.

For more information call the RIC Recreation Department between 9 and 4 at 456-8136.

RIC Blood Drive

RIC Blood Drive, Feb. 5th, 9-4 p.m. in the Union Ballroom, will be sponsored by the office of health promotion and residential life and housing.

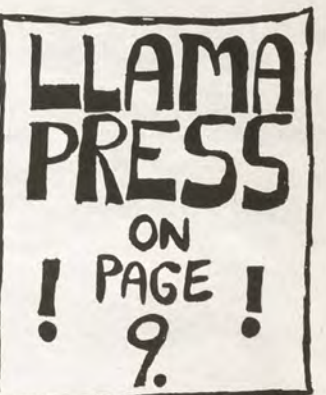
There's not too much to say about blood drives—except that they're important. People depend on them—often for their lives, and giving is easy.

When you donate blood, an interviewer will take a brief medical history to ensure that it is safe for you to donate. You will be asked to provide some personal data such as name, address and telephone

number. This information will be held in strict confidence.

While you relax comfortably, your blood is collected in a small plastic bag which will contain about 1 pint. Following your 5 to 10 minute donation, you'll be asked to rest briefly and be given a light refreshment before you resume your day's activities. Your own body will replace the blood volume you give within 2 or 3 hours.

It's safe, easy and gives you the satisfaction of knowing you may have helped save a life today.



ENTERTAINMENT

Misalliance and Trinity No Mismatch

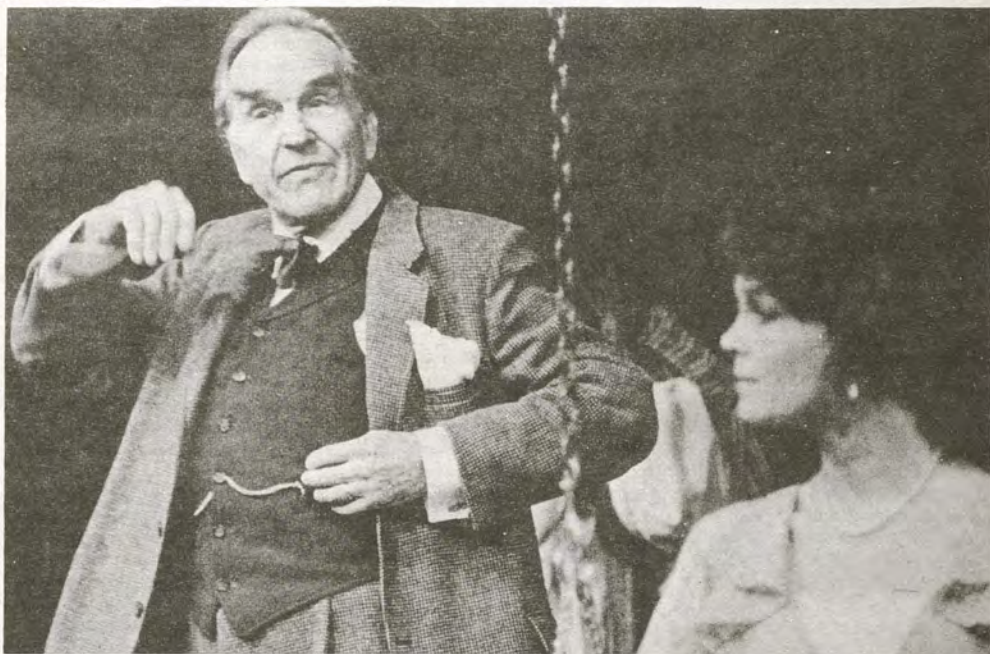
By R. Mark Auxier
Anchor Staff Writer

Misalliance, directed by Philip Minor. Production design by Eugene Lee, with lighting design by John F. Custer and costumes by William Lane. Starring Ford Rainey as John Tarleton (self-made millionaire), Vera Johnson as Mrs. Tarleton, Stephanie Dunnam as their daughter Hypatia, Richard Hoyt-Miller as their son, David C. Jones as Lord Summerhays, Brian McEleney as his son Bentley (and Hypatia's fiance). With Timothy Crowe, Margot Dionne and Richard Ferrone. Playing in the Upstairs Theatre at Trinity Square Repertory Company, 201 Washington Street, downtown Providence. For tickets and information call (401) 351-4242. *Misalliance* is playing through Feb. 10th.

The humor of Shaw's *Misalliance* rests upon an uneasy balance, a sort of three-legged stool of comedy, wherein one leg is Shaw's wit, his adroit ability to handle a nicely turned phrase, the second leg is the British class structure in all of its post-victorian "glory." And, lastly, it is the sharp eye for hilarious behavior which is not only typical of mankind in general, but which shows us at our worst: as vain, shallow creatures far more interested in maintaining appearances and other people's good opinions of us than we ought

to be. *Misalliance* is a strange sort of 'restoration' comedy. It is as if a normal play like *She Stoops to Conquer* or *The Rivals* were viewed from an odd angle. Rather like Tom Stoppard's "Shakespearean Play" *Rosencrantz and Guildenstern are Dead*. It is as if all of the forms and conventions are there, but in some subtle way they aren't quite right. Mr. Tarleton, although quite rich, bemoans his life as wasted. He wishes that he had become a writer. Mrs. Tarleton, the supposedly stupid mother, not only is atypically not a block to the young lover's romance, but shows a sensitivity and basic honesty that is absent in almost every other character. Their daughter, Hypatia, far from the coy, demure, young lady, chases young men around "until they catch her." To be sure Bentley Summerhays is somewhat the usual upper class "twit." But even Bentley has his good points and is basically well-meaning.

And add to this all of Mr. Tarleton's quoting of great authors, Lord Summerhays's dissertations on power and its use, not to mention Lina Szczepanowska's strident feminism, and you start to get the feeling that the characters are mocking the audience. Daring them to pick sides in the debates going on on the stage. Behind them stands Shaw, playing the audience as a conductor leads an orchestra. He is mocking and cynical



Ford Rainey and Stephanie Dunnam in Shaw's "Misalliance."

(Photo by Ray Manville)

and at the same time very, very funny. This humor is not the shotgun effect of slapstick. Instead we uncomfortably feel the hat-pin point of Shaw's rapier wit poking us right in our foibles. Between Shaw and Trinity the net effect is one long enjoyable evening.

This play is proof that practice makes perfect. For not only is this director Minor's fourth production of *Misalliance* but it is also the third and final stop in this production's "mini-tour" with *Misalliance*. After starting in Dallas in Trinity's "sister-theatre" it traveled to Pittsburgh and is finishing the journey in Providence. This length of time has allowed both the director and his core-cast (Stephanie

Dunnam, David C. Jones and Ford Rainey) not only to tighten their performances, but also to tune the 'instrument' of the play to fine pitch that is not usually allowed due to the relatively short-runs that are the Trinity norm.

George Bernard Shaw was born on the 26th of July, 1856. He lived through a great many radical changes in society until he passed away in 1950. Yet this play set in 1912 and written well over half a century ago is as real and valid a commentary as when it was first produced. And as the greatest English playwright since Shakespeare, Shaw shows an in-

tellectual courage and 'moral' vigor that stand out even among the 'modern theatre's' more "vocal" social critics and free thinkers.

"My experience as an enlightener, which is considerable, is that what is wrong with the average citizen is not altogether deficient political capacity. It is largely ignorance of facts, creating a vacuum into which all sorts of romantic antiquarian junk and cast-off primitive religion rushes."

G.B. Shaw (1945)

DUNE

Novel Turned Film Epic

By R. Mark Auxier
Anchor Staff Writer

DUNE: a Dino DeLaurentiis film, released through Universal Pictures. From a screenplay by David Lynch. Based on the science fiction award winning *Dune* series by Frank Herbert. Directed by David Lynch. Starring Kyle MacLachlan as Paul Atreides, Sean Young as Chani, Francesca Annis as the Lady Jessica. With Max Von Sydow, Jose Ferrer, Jurgen Prochnow, Linda Hunt and Sting. Photography by Freddie Francis, with special effects by Kit West (mechanical), Carlo Rambaldi (creature design), and Barry Nolan (photographic). Costume design by Bob Ringwood. Running time 140 minutes. Rated PG-13.

Dune, the novel, sold over 2 million copies in 1965, the year it was published. And with the subse-

quent releases of *Dune Messiah*, *Children of Dune*, *God Emperor of Dune* and, lastly, *Heretics of Dune* the estimated number of copies in print is in excess of 12 million. An estimated 40 million fans will want to see *Dune*; hopefully they will bring their friends. Or at least you would think that that is the hope of Producer Raffaella DeLaurentiis. David Lynch of *Elephant Man* and *Eraserhead* fame is the writer-director of this "filmic" version of the opening novels of the *Dune* series.

Set in the year 10,991, *Dune*, tells of the struggles and palace intrigues, of the rivalries between the different factions that make up the court of the Padishah Emperor (Jose Ferrer). The combatants in this mighty fight are two families, the Harkonnens and their enemies the Atreides, The Spacing Guild,

which controls the trade between the stars. The Emperors' attempts to get the better of any deal and the Benne Gesserit sisterhood, an ancient mystic order of psychics, search for the Kwisatz Haderach, a superman to use as their tool to control the empire.

Paul Atreides (Kyle MacLachlan) is a young man coming of age and son of the Duke Leto (Jurgen Prochnow) and Lady Jessica (Francesca Annis). Marked for death by all factions, he is at the center of the tangled web of palace intrigue. He is that messiah the "Kwisatz Haderach," the one who is destined to lead the "Freman" peoples of the planet Arrakis (*Dune*) in a holy war, to lead them out of slavery and on to the rulership of the empire.

See *DUNE*, page 5



Paul Atreides (Kyle MacLachlan) and Chani (Sean Young) in "Dune".

A Nightmare on Your Street

By Steven Feldman
Anchor Contributor

The bad guy in *A Nightmare on Elm Street* is a stereotype, not of horror movies, but of our own dimly-remembered and often private nightmares. He is irrational, ill-defined and capable of doing the impossible in his inexorable efforts to track us down. When he gets too close, we get too scared, so we wake up. The protagonists in *Nightmare* have a slight problem. They can't wake up quite as easily, and worse, the relentless bad guy of their dreams wreaks his vengeance on their true sleeping

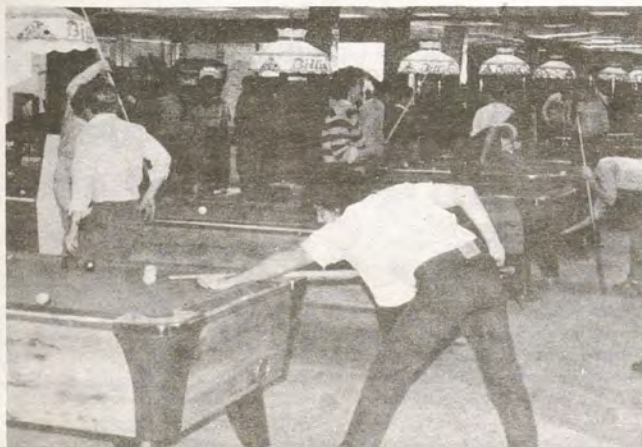
forms. When we toss and turn fitfully, clutching our pillows for support, it's OK, because we'll wake up if things get too hairy. These people aren't so lucky. When he tussles with you in your nightmare, you're flung from one end of your bed to the other. When he stabs you, an invisible blade rips through your pajama top. When he kills you, it's in tomorrow's papers.

Nightmare is a gem; a horror movie that can't fail to telegraph a few shivers of recognition. More akin to *Videodrome*, *Dreamscape* and *Poltergeist* than *Texas Chainsaw Massacre* or *Friday the 13th*, this film plays with the film

medium's supreme ability to blur the line between the real, the surreal and the fantastical.

The film opens with the bogeyman in question at work in what looks like a grungy machine shop. He finishes cutting out portions of a pair of leather gloves, and then affixes ten hand-crafted blades, each five inches in length, to the fingers of these gloves. Cut to the traditional nubile blonde in distress walking warily toward us from out of a cavernous hallway. She is stalked by gruesome, whose schtick is rasping his claws across

★ see *NIGHTMARE*, page 6



Students relax in the gameroom.

(Photo by Ray Turgeon)

Chamber Series: Stocker and Stillman

By R. Mark Auxier

The program at 2:00 p.m. on Jan. 30th will feature Judith Lynn Stillman, pianist and Markus Stocker, cellist in a recital that will be almost identical to the one that the pair will give in New York City on Feb. 6th. The showing will include works by Ludwig van Beethoven, Frank Martin, Joachim Stutschewsky and Claude Debussy. The Program will be given in Roberts Hall, room 138. It is open to the public and the admission is free.

Judith Stillman who is currently



Judith Lynn Stillman

in her fifth year as resident artist and assistant professor of music here at Rhode Island College. She has won no less than 18 competitions, including the American Music Scholarship Association International Piano Competition. She has also been a featured artist on NBC-TV and performed at the Lincoln Center.

Stocker's career began in 1972 when he won the "Grand Prix" at the International Cello competition in Paris. After many appearances in Europe and Russia, he has repeatedly toured the United States, Israel and the Far East.



Markus Stocker

Kermit "Live" at Civic Center



Kermit D. Frog, "Puttin' on the Ritz."

Kermit and the whole Muppet show will be appearing at the Providence Civic Center as part of their "Muppet Show on Tour." They will be here from Feb. 7th through Feb. 10th. For tickets and

information call the Civic Center Box Office at (401) 331-6700. Tickets are also available through Ticketron outlets.

As Kermit says, "Oh, I tell you, it's not easy being green."

★ NIGHTMARE from Page 4 metal pipes to instill dread. Her and our anxiety escalates and she wakes up...screaming. OK, so we've seen this tired "it was only a dream" bit a million times, but it's usually at the end of traditional scare fare. *Friday the 13th* and *Carrie* are classic examples of this.

No, *A Nightmare on Elm Street* is not your generic clockwork slice'n'dice opus. Written and directed by Wes Craven, the man responsible for the infamous *Last House on the Left* and *The Hills Have Eyes*, this film foregoes gore for gore's sake in favor of genuine suspense, good old fashioned horror, and an uncharacteristic dose of imagination. There are a few gory scenes, but they are gotten out of the way early on to delineate the bad guy's methodology and to placate Splatter Movie purists. Craven spends the bulk of this movie coercing us to wonder whether Fred (the bad guy) really exists or not. As in *Videodrome*, the traumatic nightmares increase in realism until they virtually are real.

Like classic horror of the 50's and 60's, *Nightmare* uses the suspense-mystery mode for its narrative and the noirish stop-start

pace for its visual element. In other words, you actually get a logical answer, at the end, for all the kinetic lunacy you've just witnessed. Events revolve around amiable preppy Nancy whose friend, Tina, was supposedly killed by the school badass during an erotic interlude in Nancy's parents' room. Thanks to a psychotic, albeit naggingly familiar dream sequence, and a grisly death scene, the audience is the wiser. Tina was killed by Fred, the same critter who's been giving all the kids on Elm Street nightmares, including Nancy and the badass. A few more familiar nightmares and something begins to dawn on us. This is like our very own nightmares. The unknown thing scaring the bejezus out of us is in his element and is in no rush. He can get us any old time. But when he gets us, the game is over; one can't terrorize that which is dead, now can one?

Heather Langenkamp, as Nancy, does an admirable job with her role as Fred's chief sacrificial lamb. Her friends are methodically killed in succession as she gulps coffee and uppers to avoid sleep. Predictably, she dozes off on occasion, making for increasingly close calls with our buddy Fred. The bathtub scene is sure to get a

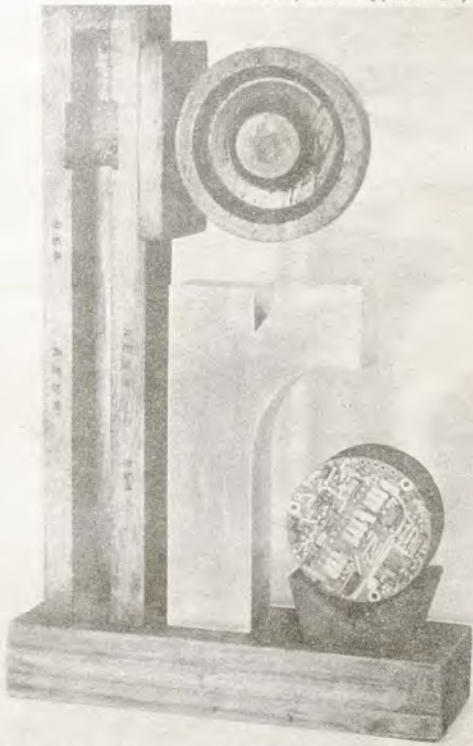
"Icons"

By R. Mark Auxier

"ICONS" the next show the RIC's Bannister Gallery is the work of John de Melim, Professor of Art at Rhode Island College. These works, which feature screen prints collages and constructions, represent a year's sabbatical devoted to the study of computer technology and its applications as a tool for design.

The show which opens Feb. 1st will display among other things, his sculptures which are constructed of "found objects" and "urban fragments" made of different woods and metals. And although the works are not computer designed, they are representative of the characteristics and capabilities of the computer. Things like "windowing," changing and moving images on a screen.

Along with his many other talents and achievements are numerous awards and regular regional exhibition and shows in both New York City and Mexico.



GRAPHIC CIRCUIT. Size: 14" wide 22" high. Materials: Painted/stained wood, stainless steel, circuit board. Artist: John de Melim. (Photo by David De Melim)



Rhode Island's own Boy on Fire opens for Rash of Stabbings at this week's Thursday Nite Series. Check them out. You'll be glad you did. (Photo by Ray Turgeon)

★ DUNE from page 4

Along the way to that destiny there are many enemies. Among them are the evil Baron Vladimir Harkonnen, his henchmen Feyd Rautha (Sting) and The Beast Rabbani (Paul Smith). And allies too, among them Duncan Idaho (Richard Jordan), Shadout Mapes (Linda Hunt), Doctor Kynes (Max Von Sydow) and his consort Chani (Sean Young).

It is the visuals that turn the relatively straight-forward storyline into a film epic. David Lynch has created the movie *Dune* and while it does hold mainly to the "grand scheme" of the *Dune* novels many "purist" fans are upset. They feel cheated at scenes which skim across what they feel are the best moments in the books. Things that evolved slowly over hundreds of pages of print flash by in seconds. Then too, there are characters left out, or altered and changed beyond repair.

Of course things go the other way also. Critics, many of whom have not read the books, pan the

reaction from even the most jaded theatregoer. Finally, Fred gets unreasonably perturbed and things get weirder than they already are. Figuring out that this guy can come right out of her nightmare and smack dab into her bed, Nancy buys a survivalism handbook and sets elaborate traps for laughing boy. Oh yes, Fred cackles maniacally when he clacks his finger blades together in anticipation of a good frolic. It's to actor Robert Englund (Fred)'s credit that

film as chaotic or lacking structure. Or they ask how did they ever let David Lynch make this film? Or refer to it as the biggest budget non-commercial movie ever made. Perhaps, they too have missed the point.

It is not that *Dune* is a film without any flaws, it has several minor ones: among which are that the film really does need more time to develop some of its characters, that at times the gore gets excessive and a bit silly, and lastly that sometimes the pace slips a little. But, the film does have its moments, in fact, many of them, when the visual beauty of the film far outstrips most peoples' abilities to visualize the *Dune* setting out of the sterility of a printed page. And isn't that one of the main reasons that we go to see movies? To show us something that we haven't, couldn't have seen before? Most likely in time *Dune* will acquire a following, not as a true "cult" film but rather more like *Forbidden Planet* or Kubrick's *2001* or *Clockwork Orange*. An important

this cackling serves to further unhinge the already-antsy audience.

A Nightmare on Elm Street makes every effort to transfer bad dreams familiar to us all to the silver screen, and for the most part, succeeds. There are leavening comedic bits here and there, but none are delivered broadly. Most of the comedy, ironically, is delivered by the intrinsically unfunny bogeyman, Fred. This kooky, twisted aggregate of dozens of

piece of film like *Day the Earth Stood Still*. A science fiction "watermark" that whows not only where film is, but also where it is headed.

Dune may only be a signpost along the road and not the destination itself, but signs are important and signs may be either useful or not. This is at the very least an enjoyable movie, and the most? Who knows? To those fans who feel a bit cheated, sympathy. But, with a large grain of salt, or if you prefer, sand. You may have felt that your favorite scene was short-changed, but in any case, *Dune*, unlike many science fiction classics was at least made into a film. And not only made into a movie but done by a competent, creative artist, not some commercial hack out for a fast, cheap buck. Lynch attempted, mostly successfully, to deal with all of the major parts of the books. And if the film does lack coherence, structure and accessibility, it more than makes up for these with color, scope and originality.

nightmare antagonists is a very unsettling reminder of what could happen if, one night, we too fail to awaken from a bout with some nebulous death-dealer of the dream world. As Nancy says repeatedly throughout the film, "Whatever you do, don't fall asleep!" Even if *The Exorcist* didn't make you scared of your own bed, *A Nightmare on Elm Street* is liable to. First it was showers, then sharks, now sheets. Is nothing sacred anymore?

SPORTS

BOX SEATS

By Bill Gardner and John Feeny
Anchor Sportswriters

This is the first week of our 1985 baseball preview. For the upcoming weeks, we will be taking a few teams at a time, and in our final column before opening day we will make our overall predictions.

We'll start in the American League—East.

Detroit Tigers—The 1984 World champions again look like the team to beat in this tough division. Their top priority was to sign MVP Willie Hernandez. They did. Their second priority was to find a dependable starter who could fill in for injury-plagued Milt Wilcox. They did, and his name is Walt Terrel, a 12 game winner for the Mets.

The middle infield combination is strong, with Lance Parrish at catcher, Sweet Lou Whitaker at second and Alan Trammell at short. Not only are they outstanding defensively, but they also provide offense production.

The right side of the field is set with Darrel Evans at first and Kirk Gibson in right. The left side holds some big question marks though. Third base was played by four different players last year, and left fielder Larry Herdon had a rather

weak season. He still remains a big unknown in Tiger's future.

Still, withstanding major problems, the Tigers should win the East, but it won't be easy.

Baltimore Orioles—The Birds made a few off-season acquisitions that could or could not help them to a divisional championship. First they went out and signed 37 year old Lee Lacy. If Lacy can still produce at 37 like he has in the past, he'll add much to the O's attack. If not, Baltimore will be a million or so poorer for nothing.

They also signed pitcher Don Aase, a man filled with sore-armed pasts. If he's healthy, the bullpen is considerably better.

Finally, the Orioles signed Fred Lynn. There is no doubt Freddie can play—just ask any real BoSox fan. The problem with Lynn is health, or lack thereof. A healthy Fred Lynn is a pennant-bound machine.

The Orioles do have one of the best starting rotations in the game. They do have the likes of Eddie Murray, and Cal Ripkin. What they don't have is 1984 pennant to wave in Baltimore. If the free agents live up to expectations, things might be a little different in 1985.

Wrestlers Off to Best Start in Decade

By Mark Jacobs
Anchor Sportswriter

They might not be the deepest team in Rhode Island College history. They might not be the most talented team to occupy Walsh Gym in recent years. They are, though, the most successful team in the last ten years, and, in the end, all the talent in the known world won't stand up to a winning record.

"In general, they are a bunch of blue-collar wrestlers," says head coach Rusty Carlsten. "They are tough, with a good attitude. They just get the job done."

The Anchormen's 5-2 record is the best since 1975, a drastic improvement over last year's 3 and 4 start. As of the beginning of this year, Rhode Island College is ranked fifth in New England-Division III.

Anchormen to Play Brown

For the first time ever, the Anchormen of Rhode Island College will be playing Division I Brown University in Men's basketball.

The meeting was not originally on the schedule, but because of a problem with NCAA regulations Brown was forced to search for a last second opponent to play a game on Brown's campus. That's when the phone

call came to RIC, and the Anchormen were more than willing to comply.

"We are pleased that Rhode Island College agreed to play us this season on such short notice. They are really helping us out in a dilemma," said Brown Athletic Director John Parry.

The game is at Brown's Marvel Gym on Monday, January 28.

A Balanced Record

The Rhode Island College gymnastics team enter the new year with a 1 and 1 record, beating the Coast Guard Academy and losing to Salem State in a December triangular meet.

Freshman Cathy Dusza was second highest all-around performer in that meet, with a 30.6 score.

Karen Charlwood was fourth in all-around (22.0). Other placements for the Anchorwomen

were Dusza's high score on the vault and captain Tracey Garforth's fourth place showing in the same event.

On the balance beam, Dusza finished second, and Pam Wholey fourth.

The gymnastics team will next see action Tuesday, January 29 against Brown and Connecticut College.

The score was tied 2-2 after the first period. CCRI went ahead on two goals in the second, but RIC rallied for 3 in the final period for the tie.

Anchormen Bag Golden Bears

By Colleen McConaghy
Anchor Sportswriter

The Anchormen squared off against Western New England College on January 19, 1985 at Walsh Center. RIC welcomed the home court advantage and defeated its opponent 80-66. This was the Anchormen's first win in their last four starts.

The two teams played neck and neck for the first 20 minutes of the game. Richard Ethier snapped an early 8-8 tie to give RIC a 10-8 lead. Steve Moran followed with two points to increase RIC's lead 12-8. Western New England proceeded to score 7 unanswered points to take a 15-12 advantage at 9:17 in the first half.

The Anchormen recaptured the lead with Dana Smith's 10 ft. jumper. At 6:29 the score favored the Anchormen 22-19. The Golden Bears', Kevin Hamel, regained the lead for his team with a 15 ft. jump shot. Hamel made good on another shot with under five seconds remaining in the half to give his team a 31-30 halftime advantage.



Photo by Bill Wilson

The last 20 minutes of play started off well for RIC. Ten minutes into the second half the Anchormen had outscored their opponents 14-4 to take a commanding 44-35 lead. RIC continued to execute well on offense and a good defensive effort prevented the Golden Bears from getting back into the game. Steve Moran sealed the win for the Anchormen with his turnaround jump shot at the buzzer.

Freshman, Greg Clark, scored a career-high 16 points as he led the

team to victory. Greg played a strong game off the boards with 10 rebounds. Dwight Williams had 14 points for the evening. Richard Ethier and Dana Smith contributed 12 points each. Smith also grabbed 12 rebounds for the night.

The Anchormen are now 6-6. HOOP NOTES—RIC's men's team played three games over intercession on the west coast, losing all three of their contests. They lost to University of San Diego 99-89, University of Redlands by 22, and to Chapman College 81-58.

Anchorwomen Hang Tough Against Brown Bruins

By Colleen McConaghy
Anchor Sportswriter

The Anchorwomen of RIC met Brown University on January 22 at Walsh Center. Although the Anchorwomen were defeated 78-60 they held their own against this Division I club. The size of the lady Bruins worked against RIC, particularly off the offensive boards where the Anchorwomen were usually held to one shot.

The Bruins utilized the fast break during the first 5 minutes of play. Consequently, Brown's trips down the floor for 2 points came easier than did RIC's. Cathy Lanni hit one of two free throws to pull the Anchorwomen within 2 points before Brown ran off 11 unanswered points to take a 23-12 lead with 12:18 remaining in the half. Brown had a 10 point lead with 2 minutes left in the half. Peggy Lynch went to the line and connected on 2 free throws to bring her team within 8 points, 42-34. The Bruins reciprocated with 4 quick points to take a 46-34



Photo by Bill Wilson

halftime advantage.

The second half opened up with a RIC hoop to make it a 10 point ball game. It did not take the Bruins long to make their presence felt. Brown had accumulated an 18 point lead by 16:45 of the half, their biggest of the game thus far. Although the Anchorwomen had chipped away at Brown's lead on several occasions, they were unable to put together a consistent run in order to get back into the game.

Considering the matchup slated

a Division I team against a Division III club, the Anchorwomen's 18 point loss did not register a total blowout.

Monique Bessette played a strong defensive game and came up with 4 steals on the evening. Monique also posted 13 points, along with 5 rebounds. Jo Ann D'Alessandro was RIC's high scorer with 17 points. Cathy Lanni scored 16 points and registered 8 rebounds for the Anchorwomen.

The Anchorwomen's record is now 12-3.

Brave New World Visited

By Mark Jacobs
Anchor Sportswriter

I was there.

Over semester break, I joined countless fellow New Englanders, and headed west to experience the wonders of an exotic land, far different from those of our proud, old U.S.A. It's the land of mythical enchantment, a strange language, endless 7-11's, and a lot of jobs.

I went to Dallas, Texas.

Don't get me wrong, I wasn't there on any sort of pleasure-seeking vacation, nor was I there to learn, to get rich, to work, or to spy. I was a pilgrim in search of the quintessential football experience—Dr. Flutie's magical emporium to cure football fever, I.E. the Cotton Bowl. The time was right to be saved, and I was handing my football soul to the deity of pigskin deliverance Boston College quarterback Doug Flutie.

By this time, any self-respecting sports fan will have known, and probably forgotten about B.C.'s victory over the University of Houston. Therefore I'd like to dwell on a few of my Cotton Bowl experiences outside of the game itself, concentrating rather on the

events immediately leading up to the event.

The first thing that hit me as I approached the stadium was the number of scalpers working outside the entrance gates, completely unharassed by the local cops (excuse me, in Texas you address law enforcement officers as Mr. Policeman Sir). Yelling at the top of their voices, dancing through the crowd like misguided freshmen at a Thursday Night Mixer, the scalpers seemed to outnumber the attending crowd 2 to 1. Considering Texan's adersion to weather below 50 degrees, scalped seats came cheap. End Zone seats were going for as little as five bucks.

I was always brought up to worship major sporting events, and resent those fortunate few to have tickets to see one. A simple five spot for a seat at the Cotton Bowl simply stunned me. I've lost that much money in a week to the Student Union soda machine.

Since I was already in the vicinity of the player's entrance gate, I decided to seize the opportunity and go for an exclusive Anchor interview with the Burgermeister of B.C. himself, Mr. Flutie.

What did I have to lose? I know more than a couple of guys who would stoop so low as to eat meatloaf at Donovan just to see their name in the Anchor. Flutie must be the same, I thought.

Squeezing my way through the crowd like a communications major in pre-registration line trying to obtain that last class needed to graduate, I moved close enough to Flutie to maybe ask a few questions about the important things in his life, like football, money and groupies.

Unfortunately, Doug's not quite the interview some members of the media have made him to be.

When I told him I wanted to ask a few questions for the Anchor he just walked on by, into the tunnel, and out of sight.

Hey, I asked nicely.

I decided next to try to enter through the press-gate with my Anchor sports editor credentials. Although I had a ticket, I couldn't turn down a shot at a heated press-box filled with free food.

The guard at the press-gate was one of those big Texas brown-shirts you have nightmares about, the

Continued on page 7

RIC Hockey Squad Ties

The Rhode Island College hockey team tied CCRI 5-5 Saturday, January 19 in Warwick.

Mike Cooper and Al Fiae had two goals each for the Anchormen.

★ NEW WORLD, from page 7

kind that cleans his boots by spitting tobacco on them. He didn't look too happy either about having to stand in the cold to check press-passes.

Since the *Anchor* doesn't exactly issue sports credentials, I pulled out a past issue of the paper I always carry for such occasions, and showed him my name under the editor's board. After some speculation, and a modicum of doubt, he decided to call upstairs to check me out with his boss. Needless to say, I was dead.

After a short pause, he looked me in the eyes and asked *The Anchor*, huh? You don't happen to be in the Navy, do ya?" What could I say? I told him no, but I had watched hundreds of McHale's Navy re-runs.

He asked the front office if that was enough. Evidently it wasn't, and he asked me to leave the press area, if not Dallas altogether.

Before I went through the turnstiles into the stadium, I stopped at one of the hordes of sale stands all about the Cotton Bowl grounds. They were stuffed to the gills with the typical over-hyped trash, most more expensive than the average Ralph Lauren product.

Still I wanted a game program, because as the old adage says you can't tell your players without a program, or more importantly you'll never know where the Cotton Bowl queen lives and how much her daddy's worth without one.

Imagine my shock when the program seller I was approaching said "Programs here, buy a program and put a priest through college"

Let me tell you, that's an anti-catholic sentiment this world can do without. No way was I going to support that type of red-neck prejudice. Not me sir, I have scruples. I made my friend buy one.

My seat was excellent, around the 45 yard line. Behind me sat the dynamic duo of Dallas, a father and son team and self-appointed guardians of Texas arrogance. They missed most of the first half while they watched Championship wrestling on a small black and white they had with them. In front of me sat two older B.C. gentlemen, huddled around a container of buttered rum.

Throughout the game, these two very different pairs were more than willing to share their wit, wisdom, and spirit of sportsmanship with anyone willing to listen (or unable to escape).

The Bostonians, old enough not only to remember the Boston Tea Party, but probably to have participated in it, lamented the demise of the leather helmet, and the invention of the forward pass. They almost blew a gasket laughing when they shouted at the Houston band to go home, that the game was over (thirty seconds into the second half).

The Texans behind me told me to watch for New Englanders because they are "shifty and cheats."

I told them that's what I've heard, and thanked them for the advice. When they weren't looking, I stole their program.

I never knew college football could be so much fun. You lose so much of the atmosphere on television, no matter how good the camera angle.

Fencing

By Ray Kaul
Anchor Staff Writer

The Rhode Island College fencers started the second half of their season with a three and two record. After losing two out of their first three matches against Brown and Wellesley College, the team rebounded at the SMU holiday Tournament, where three women made the semi-finals, and one the finals, finishing fifth. The team went on to win their next two matches against Holy Cross and Brandeis.

"The team is doing very well," said head coach Tina Karacas. "Despite one transfer, and a knee injury, we are still looking forward to our big upcoming matches against Farleigh Dickinson and Wellesley on January 26. Still though, with those two losses we are a bit short with only seven fencers."

The next home match is on February 8 against Western Conn. State University.

SPORTS from the pressbox

By RICK SULLIVAN

WHERE ARE THEY NOW?

Here's a look at what some of yesterday's superstars from the NBA and defunct ABA are up to these days:

* **Walt Bellamy** lives near Atlanta and was a Georgia delegate to the recent Democratic National Convention.

Upcoming Events

UPCOMING HOME EVENTS

Men's Basketball—Feb. 2 against Southeastern, Mass. Univ. (7:30)

Women's Basketball Feb. 2 against Southeastern Mass. Univ. (5:30)

Wrestling—Jan. 30 against Boston College & Amherst (5:30)

Gymnastics—Feb. 2 against MIT & UMaine-Farmington (1.00)

* **Dave Bing** lives in Detroit and is the owner of Bing Steel Co.

* **Bob Cousy** lives in Worcester, MA and is color commentator for the Boston Celtics.

* **Mel Daniels** serves as special assistant to the Pacers' coaching staff.

* **Walt Frazier** lives in Atlanta and is president of a sports agency.

* **John Havlicek** lives in Weston, MA and is enjoying a successful business career.

* **Johnny Kerr** owns an insurance firm in Chicago and is an analyst on Bulls' telecasts.

* **Slick Leonard** lives in Indianapolis and is president of his own investment company.

* **Pete Maravich** lives in Metairie, LA, with his wife and two sons.

The Professional
Typist—done
right the first
time.

GIRL FRIDAY



WE'RE YOUR TYPE
421-0401
719 Fleet Bank Building
Providence, Rhode Island

HAIR FREEDOM

SHEDDING BARBERS

A Unique Hair Experience
in a Comfortable,
Personal Atmosphere...
for Men & Women

Free Maji Gloss
with Styling
(and this ad)

Hours:
Tues.-Saturday 9-5
Thurs.-Friday Open til 9

1535 Hartford Ave.
Johnston, RI (Rt. 6)

273-7129

GRAND OPENING SPECIALS EVERYTHING VIDEO

Featuring Channel Master Accessories
The One Stop For All Your Video Needs

SAVE!!!
Get 2 FREE MOVIE RENTALS &
a 20% DISCOUNT

on all film rentals when you buy a College-Life Rental for \$15.00 (student, or faculty member, must present a college ID and a valid driver's license)

Coupon Expires 2/28/85

31 Smithfield Rd., North Providence (Admiral Plaza) 751-5690

HEY, DAVEY!
WHAT'S GOING
ON AT THE
THURSDAY
NITE SERIES
THIS WEEK?

RASH OF STABBINGS AND
BOY ON FIRE ARE PLAYING
AND IT SHOULD BE A
REAL NICE EVENING
OF HEART-WARMING
TUNES.

IT HAPPENS JANUARY 31 AT 9:00 pm
IN THE S.U. BALLROOM.


\$2w/RIC ID
\$4w/OUT

Sponsored
by
RIC
PROGRAMMIN

©1985 TOM CORNICELLI

RIC Dance Co.

audition



Wed. Feb. 6
2:00 pm

Walsh Studio

A MESSAGE TO THE RIC COMMUNITY:

Rumor has it that the Gay Alliance Organization and the Women's Center are practically one and the same. Many notifications have been circulated that if anyone wishes to contact the Gay Alliance (GALA) they should call the Women's Center. The above statements are incorrect. While the Women's Center supports the Gay Alliance they are not the same organization nor are they sharing the same office. Written messages for the Gay Alliance may be left with the Sociology Department in Craig-Lee (4th Floor).

If anyone wishes information or referral relative to GALA, please call GAY HELPLINE at 751-3322 evenings, 7 p.m.-11 p.m.

Dixon A. McCool
Student Life Officer

Attention Student Organizations

(Funded by Student Activities Fee Only)

Budget Request Forms/Packets
for Academic Year '85-'86
Must be Picked Up!

Place: Student Parliament Office
Student Union 200

Deadline: Friday, February 1, 1985

For More Information Call 456-8088

Thur. Nite Series

JAN. 31

RASH OF STABBINGS

AND **BOY ON FIRE**

9 P.M.
S.V. BALLROOM
\$2 w/RIC ID
\$4 w/out

Roomful of Blues

AND **FOURTEEN
KARAT
SOUL**

9 pm
in Donovan

FEB. 8

\$3 w/RIC ID and in advance
\$5 general admission and day of show
on sale at S.U. Info Desk starting Jan. 28

Video Series

1/22-1/28

**THE LAST AMERICAN VIRGIN
A LITTLE SEX**

1/29-2/4

SLAPSHOT / HOT DOG: THE MOVIE

Shown Daily Monday thru Saturday
9 A.M. • 1 P.M. • 6 P.M.
in Video Den (S.U. lower level)

Chaka Khan refunds
available at Student
Activities Office till
Feb. 5, from 9 am-4 pm
—S.U. Rm. 314—

Llama Press Sweeps New England!!!!

An Exclusive Interview with Don Asmussen and Joe Carroll



Don Asmussen and plant.

By Veto Crump
Anchor Contributor

The signs are everywhere. You've seen them. Your mother has seen them. The word is out, the Llama is coming. After months of research, brainstorming, and sweat, as well as anticipation, Llama Press has finally arrived at the RIC campus. For those of you who have been hiding in an attic for the past two years, the Llama Press is a new alternative aesthetic vision which is fast becoming the critic's choice, receiving a large cult following in New York City. A unique blend of underground comics and cute pictures of cats, Llama Press has already established a local chapter of the Llama Press Club on your very own campus. Recently the Anchor tracked down the two men responsible for this creation, cartoonist Don Asmussen and his partner Joe Carroll. Here are some excerpts from the series of interviews:

ANCHOR: We've heard you have a new creation for this coming semester, Don. After such odd-ball titles like "Looper's World" and "Trash Comics," what have you come up with this time?

ASMUSSEN: Llama Press.

write it.

ANCHOR: What does Joe do?

ASMUSSEN: Don't print this...

ANCHOR: We won't.

ASMUSSEN: ...well, to tell you the truth he just delivers it to the Anchor for me.

ANCHOR: What is the setup for Llama Press?

ASMUSSEN: The setup is that there is no setup, that such setups in themselves are simply limitations. In the avoidance of an actual setup, or idea, we avoid having to adhere to such guideline, giving us full freedom to pursue whatever strikes our fancy. Of course, this "no setup" idea is questionably an actual setup in itself, creating an incredibly complex paradox within our own comic inner-workings. This paradox will hopefully fuel our creative fire throughout the semester, pushing us further and further toward the ultimate satirical vision. If not, we will get confused and probably die.

ANCHOR: Do you feel that your "Rene Descartes discusses reality with Riboflavin" reached that ultimate satirical vision?

ASMUSSEN: No comment.

ANCHOR: What is Llama Press' ultimate goal?

ASMUSSEN: To abolish racism. And to get me a girlfriend.

ANCHOR: Those are two very high goals. One is realistic, but a cartoonist having a girlfriend is a contradiction of terms.

ASMUSSEN: True. Well, back to Llama Press. It will basically possess an anti-Plato attitude in that it does not see unity as a necessary property in its aesthetic worth. What I want to create is a "shattered unity" effect. By being so illogical, you redefine unity so that it is unified in its anti-unity. Because of this, the comic will still follow the basic aesthetic rules of this planet but still be free to almost ignore them. The comic will also feature a violinist character.

THE FOLLOWING ARE EXCERPTS FROM A LATER INTERVIEW WITH JOE CARROLL:

ANCHOR: Explain your creative process...

CARROLL: Well, don't print this...

ANCHOR: We won't...

CARROLL: I actually have to do mounds of research by myself and then lock myself in my room and come up with a great humorous idea. Don will usually say it stinks. Then three weeks later he calls the idea his own and prints

ANCHOR: How are you dealing with the phenomenal success Llama Press is enjoying in New York?

CARROLL: I'm taking it very well, especially the girls. But Don, huh...don't print this...

ANCHOR: We won't...

CARROLL: ...well, Don has been seeing a psychiatrist for the past month. Pressure is really getting to him... Hell of a swimmer though.

ANCHOR: Any future plans?

CARROLL: Well, you know what they say... Shoot for the stars! With enough work and



Joe Carroll and plant.

it anyway. (GENERAL LAUGHTER) I do most of the work, but I put Don's name on it because I feel bad for him. He saved my brother once when he was drowning. Don is a little slow, but he is a good swimmer. I owe him one, you know.

publicity, Don and I see a possible inclusion in the Pawtucket Times, and eventually, although we only dream of it now, the Woonsocket Call. It would be then that we knew we had made our mark.

THAT'S ALL WE HAVE ROOM FOR, FOLKS.

LLAMA PRESS INC.

Brought to you by:

Style & Mark refrigerator



MODEL 243
• 13.5 cu. ft. Total Capacity
• 100 lb. Frost-Free Low Temp. (10)
• Automatic Defrosting (see Page 22-23)



AL THE LIFE GUARD
By Red Stu

THIS IS AL...

THIS IS AL'S GIRL BETSY...

OH WELL! NO MORE ROOM, BIE!
THE END

A NOTE FROM THE EDITOR:

BIG DIRK!

Hi, Readers! Big Dirk is back from Florida, and I feel better than ever! And what does Big Dirk find out? He finds out that Rhode Island College has added Llama Press to its popular paper! Yes, the Llama has something for everyone! Laugh with Anakudluk the witty eskimo! Thrill to Nathaniel Hawthorne! Sway to the big vibes of Herb the violinist! Not to mention the other goodies! Make sure to write to us with your suggestions! We want to hear from you! Write to Big Dirk! Love the Llama!

Catch ya later,
Big Dirk

ROTARY RAZOR
adjustable tripleheader

Corneilus

Corneilus recommends it!

The revolutionary new Rotary Razor incorporates these advances in technology to give you close, gentle, safe shaves. It can shave as close as a safety razor, but without the danger of a safety razor. Look at the head on your Rotary Razor. The coils are uniquely designed to cut off whiskers before they reach without damage to the skin. The secret to the Rotary razor is closer, smoother shaves.

CAT CORNER

"HONEY, QUICK, LOOK AT THE CAT!"

THAT'S WHAT KRIS JONES, A SOPHOMORE NURSING MAJOR AT RIC, SAID TO HER BOYFRIEND WHEN SHE SAW HER CAT FRED SIPPING FROM A STRAW! THANKS FOR SENDING US THE PHOTO, KRIS!

CULTURED COMICS: Nathaniel Hawthorne

The Scarlet Letter

On a summer morning in 1642, most of the people of the town of Boston, Massachusetts, were gathered before the jail. It was an angry Puritan crowd. Their eyes were glued to the strong, oaken prison door.

The women seemed to take a special interest.

I think, ladies, it would be better for everybody if we women took care of such sinners as this Hester Prynne!

CONTINUED NEXT WEEK!!!

ANAKUDLUK THE WITTY ESKIMO!

HERB THE VIOLINIST.

HERBMANIA WAS OVER AND HE KNEW IT. HE PLAYED TO EMPTY HALLS WHEREVER HE WENT. IT WAS TIME FOR A TURNING POINT IN HERB'S CAREER...

BLUE JEAN, I'M NOT THE ONE...

ANAKUDLUK'S JOKE CORNER:

Q: HOW MANY BLUE WHALES CAN YOU FIT IN SMALL IGLOO?

A: NONE, MUCH TOO BIG, HAWAII.

By Sid Butts

NEXT WEEK:

THE TURNING POINT!

- ★ LIKE TO WRITE?
- ★ NEED SOME SPARE CASH?
- ★ INTERESTED IN LEARNING SOME VALUABLE WRITING SKILLS?
- ★ WANT TO BE KEPT UP-TO-DATE ON WHAT'S HAPPENING ON CAMPUS?
- ★ ALWAYS WANTED TO BELONG TO A STUDENT ORGANIZATION?
- ★ NEED TO DEVELOP YOUR RESUME AND/OR PORTFOLIO?
- ★ WANT YOUR WORK TO BE READ BY 5,000 PEOPLE PER WEEK?

...Then join the Anchor. We have a limited number of paid staff writer positions. Applications are available in the Anchor Office, Student Union, Room 308. Call 456-8257 and ask for Scott or Bob.

The *Anchor* will be holding
an election for the position of
Photography Editor on
Wednesday, February 13, 1985.
All nomination must be in by
Tuesday, February 12.
All questions should be directed to
Jeanne Vetter, Managing Editor
at 456-8280.

CLASSIFIEDS

NOTICES

SPRINGBREAK RESERVATION SERVICE—7 nights, 8 days in Ft. Lauderdale, Florida's most popular springbreak party, from \$109. Call now and reserve your sun-filled vacation. LUV Tours—800-368-2006.

Typing Service: Papers, Thesis, Resumes, etc. \$1-per page. Will pick up and deliver on campus. Call Lois 944-2339. Days 277-3021, ext. 280.

LUV a happy hour in Ft. Lauderdale on THE STRIP? Stay on THE STRIP where all the action is. From \$149 on THE STRIP. Call LUV Tours—800-368-2006.

Typing Service: \$1.00 Per Page. Pick-up and delivery negotiable. Paper supplied by the student. Call 942-2629.

Typing Service: Term Papers, Reports, Resumes, etc. \$1.00 per page for term papers and reports. Pick-up and delivery service available. Please call 231-8624. Thank you.

Ft. Lauderdale Springbreak Party!!! LUV Tours offer the affordable opportunity to party with thousands of other college students from \$109. Call NOW to reserve your sun-filled vacation. 800-368-2006.

SPRINGBREAK RESERVATION SERVICE. 7 nights, 8 days in Ft. Lauderdale, Florida's most popular springbreak party, from \$109. Call now to reserve your sun-filled vacation. LUV Tours—800-368-2006. Ask for Annette.

HELP WANTED

Sitter wanted for 8-year old boy evenings: Call 351-6414.

Part Time: \$6.85 to start in new branch of East Coast firm. Now interviewing for College Students. Gain valuable resume experience. Call Carole at 946-0150, between 4-7 PM, for an interview appointment.

LUV a pool party in Ft. Lauderdale? 7 nights, 8 sunny days in Ft. Lauderdale from \$109. Call LUV Tours—800-368-2006.

PERSONALS

Cherie—You look **marvelous!** You really do. Keep up the good work. An Admiring student.

Ft. Lauderdale Springbreak Party!!! LUV Tours offer the affordable opportunity to party with thousands of other college students from \$109. Call NOW to reserve your sun-filled vacation. 800-368-2006.

Promiscuous—Congrats on the new job. Will you let me through without a guest? Your Chauffeur, Mr. Happy.

LUV a pool party in Ft. Lauderdale? 7 nights and 8 sunny days in Ft. Lauderdale from \$109. Call LUV Tours—800-368-2006.

Don—Don't you have a mailbox? I keep looking for it, but can't find any with your mail in it. Y.F.N.A.E.

Chrispy: Please don't kill us all off. You either, Andy. M.

Carol, you're a wonderful Lucy—we know it's acting.

Adam Anter—Doing lunch was fun. We'll have to do it again, but you have to bring your multicolored British M & Ms.

LUV a happy hour in Ft. Lauderdale on THE STRIP? Stay on THE STRIP where all the action is. From \$149 on THE STRIP. Call LUV Tours 800-368-2006.

You're a Good Man, C.B. was lots of fun to see; thanks!

Jeni: from W. Side S.: Somewhere a Place for us, where the rent is low and we'll always go...Mimi.

Scott—tell the flu to bug out...sleep, O.J., warm baths, SOUP. Tell Dad to give P. her medicine—and YOU take YOURS!!!

Dira, so where's this famous test you keep telling me about and then "forgetting"? Come on, I want to find out what THEY think is my quotient...Miad

SOME FACTS ABOUT YOUR FUTURE AS AN AIR FORCE NURSE



There are many nursing positions which offer career fulfillment. Being an Air Force nurse can fulfill that need. There is also a lot more to life than work and Air Force nursing provides that something extra. In addition to your nursing uniform, you'll wear the uniform of an Air Force officer.

You'll have the prestige and responsibility of a leader with equal opportunity for advancement. You'll have the advantages of the Air Force's great way of life — 30 days of vacation with pay each year, medical and dental care, educational opportunity and recreational facilities. There are many more personal and financial rewards. If you qualify, you may compete for Air Force nursing specialties. Add the challenge, the responsibility and the opportunity of Air Force nursing to your future. Contact an Air Force nurse recruiter today for more information.



SEMESTER IN SPAIN

Not just for Spanish majors only, but for everyone: beginners, "in between" students, and advanced. Put some excitement into your college career!!

BEGINNER OR ADVANCED—Cost is about the same as a semester in a U.S. college: \$3,480. Price includes jet round trip to Seville from New York, room, board, and tuition complete. Government grants and loans may be applied towards our programs.

Live with a Spanish family, attend classes four hours a day, four days a week, four months. Earn 16 hrs. of credit (equivalent to 4 semesters taught in U.S. colleges over a two year time span). Your Spanish studies will be enhanced by opportunities not available in a U.S. classroom. Standardized tests show our students' language skills superior to students completing two year programs in U.S. Advanced courses also.

Hurry, it takes a lot of time to make all arrangements.

SPRING SEMESTER — Jan. 30 - May 29
FALL SEMESTER — Aug. 29 - Dec. 19
each year

FULLY ACCREDITED — A Program of Trinity Christian College.

For full information — send coupon to:

SEMESTER IN SPAIN

2442 E. Collier S.E., F-6
Grand Rapids, Michigan 49506
(A Program of Trinity Christian College)

F-6

college you attend _____

your name _____

your present street address _____

city _____ state _____ zip _____

If you would like information on future programs give permanent address below.

your permanent street address _____

city _____ state _____ zip _____

a unique
opportunity
for
Math/Science

(Majors/Minors/Aptitudes)

The toughest job
you'll ever love

PEACE CORPS



For you and for the world, Peace Corps will combine your education with training to prepare you for a volunteer position in: • Education • Fisheries • Health • Agriculture • Forestry or other areas. You'll meet new people, learn a new language, experience a new culture and gain a whole new outlook. And while you're building your future, you'll be helping people in developing countries learn the basics of technological advancement.

INFO IN STUDENT UNION
2ND FLOOR, 10:00 - 3:00
SENIOR INTERVIEWS IN
CAREER SERVICES
FEBRUARY 4.

WARWICK'S — NEWEST AND HOTTEST!
Rocky Point's
Cliff House

737-8000

UNDER 21 CLUB

DANCING . . . SNACKS . . . GAME ROOM . . .

OPENING - FEB. 2

FEATURING **RADIO STAR**

COMING SOON! 'THE SHAKE' 'FALLEN ANGEL' 'THE ROCK-A-DIALS' AND OTHER GREAT BANDS LIVE!

NON-ALCOHOLIC BEER AND WINE AVAILABLE

OPEN EVERY FRI. & SAT. 7:30 - 12:45

MUST BE 16 YRS. OF AGE OR OVER

ADMISSION: \$5 or \$6 (DEPENDENT ON BAND)

ADVERTISEMENT

TIMOTHY HUTTON CAPTURES NEW YORK CITY IN "TURK 182!"

Academy Award winner Timothy Hutton plays a very new kind of hero in "Turk 182!" As the fighting mad, hip and resourceful Jimmy Lynch, he sets out to prove you can battle City Hall to right a wrong. His older brother, a firefighter, is injured while saving a child from a burning tenement. But since he was off-duty and having a drink in the local bar, an uncaring city bureaucracy has refused him a pension.

Crusader Excites City

When the mayor is too busy running for re-election to hear his case, Jim-



TIMOTHY HUTTON (right) is Jimmy Lynch and ROBERT URICH (center) is his big brother Terry in this rousing adventure-drama.



TIMOTHY HUTTON stars in "TURK 182!" as Jimmy Lynch, a young man whose crusade to redeem his brother's reputation rallies an entire city to his side.

my Lynch takes matters into his own hands. Using only his wits, Jimmy sets out to prove that you can fight City Hall, and the entire city rallies behind the mysterious crusader known as Turk 182.

Hutton proves riveting as Jimmy Lynch, a budding artist pushed into action to fight for his brother's life—and justice. Recently starring with Sean Penn and Lori Singer in "The Falcon and the Snowman", Hutton has followed his Oscar-winning debut in "Ordinary People" with extraordinary performances in films such as "Taps", "Daniel" and "Iceman".

Joining Hutton in this exciting urban adventure are Robert Ulrich, Kim Cattrall, Robert Culp, Darren McGavin and Peter Boyle.

FEBRUARY MEANS "MISCHIEF" FOR MOVIEGOERS

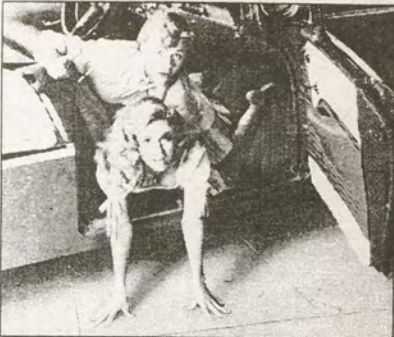
Doug McKeon is burning up—he's getting dangerously close to college without hitting a "home run" with any girl, much less Kelly Preston, the cutest one in the class. Let's face it—it's the 1950's, and Doug would settle for a "single". That is, until big city buddy (and screen newcomer) Chris Nash arrives at school and bets that he can help Doug hit a grand slam.

A winning cast

The cast of "Mischief" is particularly hip. Doug McKeon is best known as the "suck-face" kid in "On Golden Pond". Kelly Preston, soon to be seen in the upcoming "Secret Admirer", played the luscious damsel in distress in "Metal



"Please, Marilyn—it's been 18 years!"



Boy & girl in search of a contact lens.

Storm". Catherine Mary Stewart, who plays Chris Nash's girlfriend, was a smash hit as the lead in both "Night of the Comet" and "The Last Starfighter".

Major league mischief

Together, Doug, Kelly, Chris and Catherine stir up more rowdy "mischief" than little Nelsonville, Ohio can take in one year. We're talking major league tomfoolery here: motorcycles on sidewalks, cars on fire hydrants, parents on the war-path, romance on the sly. In short, all the things that make life worth living before college.

The cars may have changed, but the action in the back seat has not!

ADVERTISEMENT

ADVERTISEMENT

RIC GAY and LESBIAN ALLIANCE

MUTUAL SUPPORT DISCUSSIONS WEEKLY MEETINGS (Wednesday—2 p.m.) Call (7 p.m.-11 p.m.)

751-3322

RIC SNACK BAR

Free 12 oz. Soda with purchase of Eggplant Parmegian

Expires Feb. 4, 1985 (One coupon per person at a time)

DONOVAN DINING CENTER (1/28-2/5)				
TUESDAY Turkey w/dressing & Gravy Whipped Potatoes Buttered Peas Baked Squash Cranberry sauce Hot Pastrami Pizza Hamburgers Cheeseburgers Hot Dogs French Fries Onion Rings Salad Bar Ice Cream Sundae Bar	WEDNESDAY Beef Pot Pie w/ Topping Buttered Noodles Buttered Broccoli Baked Fish Grilled Ham & Cheese Hamburgers Cheeseburgers Hot Dogs French Fries Onion Rings Salad Bar Ice Cream Sundae Bar	THURSDAY Baked Chicken w/ Chicken Gravy Roast Potatoes Buttered Mixed Vegetables Buttered Green Beans Veal Cutlet Sandwich Hamburgers Cheeseburgers Hot Dogs French Fries Onion Rings Salad Bar Ice Cream Sundae Bar	FRIDAY Chef's Choice Clam Cakes Clam Chowder Ranch Fries Baked Macaroni & Cheese Hot Beef Sandwich Hamburgers Cheeseburgers Hot Dogs French Fries Onion Rings Salad Bar • Ice Cream Sundae Bar	MONDAY Baked Meatloaf w/Gravy Mashed Potatoes Buttered Carrots Buttered Broccoli Hot Tuna Grinder w/Lettuce & Tomatoes Hamburgers Cheeseburgers Hot Dogs French Fries Onion Rings Salad Bar Ice Cream Sundae Bar

OUR NURSING SCHOLARSHIP WILL HELP YOUR PROFESSIONAL PLANS.



If high tuition costs are jeopardizing your future in nursing, Army ROTC may have just what the doctor ordered:

An Army ROTC scholarship.

ROTC recently set aside hundreds of scholarships solely for nursing students like yourself.

Each one covers full tuition, books and other supplies, and pays you up to \$1,000 each school year it's in effect.

So make an appointment to find out more about an Army ROTC scholarship.

Contact your Professor of Military Science today.

**ARMY ROTC.
BE ALL YOU CAN BE.**

CONTACT:
Capt. Owens
456J8177/8609