



WHAT'S NEWS

AT RHODE ISLAND COLLEGE

Vol. 21 Issue 7

Circulation over 43,000

Jan. 29, 2001

College receives Champlin grants of \$225,000

by Shelly Murphy
What's News Editor

The Champlin Foundations has awarded a total of \$225,151 to Rhode Island College for two proposals: computer-based projection technology and computer-assisted foreign language learning.

The College submitted a total of seven proposals this year for consideration by the Champlin Foundations trustees, according to Marguerite M. Brown, vice president of development.

This year, the Champlin Foundations received acceptable grant requests totaling over \$46 million. There was less than half that amount available for distribution so many worthy requests were not able to be fulfilled, she noted.

"The successful proposals prepared by the audio visual advisory committee under Chair Shirley LaCroix and by Jim Schweikart, director of the Center for Management and Technology, and Karen Dionne, director of Outreach Programs, have provided the entire campus with much needed resources," Brown said.

SmartBoards, LCD projectors

The \$105,595 grant for the computer based projection technology will enable the College to equip eight classrooms with state-of-the-art electronic classroom, including four with full color video projection systems and Smart Boards and four with the video projection systems and Video Presenters, as stated in the grant proposal.

In addition, six portable LCD projectors will be purchased to display computer images for teaching, simulations, demonstrations and presentations in order to enhance the quality and scope of lecture presentations. These units would be dispersed around campus as needed.

A SmartBoard is a whiteboard. All writing, graphics and other marks made on this special board can be stored electronically in a computer for student review at a later time. A video projector is required for each SmartBoard.

Currently the College has two SmartBoards — one in Gage 373 and one in Horace Mann 191. These classrooms are in high demand. Faculty and students have recognized the benefits of this technology which enhances teaching and learning because the students can see a topic illustrated in front of them during class and all notes or comments made on the board can be recalled for later discussion or review.

Through this technology, faculty will have the ability to incorporate into their lectures an unlimited selection of text, diagrams, pictures, and film for instant classroom viewing. They will be able to take advantage of the textbook illustrations and photographs that many publishers make available on CD-ROM.

See Champlin, page 2

Fannie Helen Melcer's legacy celebrated at dance studio dedication

by George LaTour
What's News Associate Editor

A near-capacity audience of dance enthusiasts, friends and colleagues of the late Fannie Helen Melcer braved the outside cold of the evening of Saturday, Dec. 9, to share in the warmth of the dance concert and dedication of Rhode Island College's new dance studio in her name.

Gathering in the Lila and John Sapinsley Hall in the Nazarian Center for the Performing Arts, dancers and admirers of Melcer heard speakers extol the virtues of

"Music and dance kindled her spirit and transformed her into a fountain of joy and exuberance."

— Ellie Lemaire

the long-time RIC dance director who served from 1960 until her retirement in 1980. She died March 28, 2000 at age 84.

"As we join together for the dance concert, we also gather to honor the memory of a dear friend whose name is uttered with the greatest of reverence at Rhode Island College as well as in many other places where people share a passion for the arts," noted College President John Nazarian.

"That person was Dr. Fannie Helen Melcer, artist, photographer, educator, optometrist, author and mentor to thousands during her long and distinguished career.

"As a lasting memorial to this remarkable individual, tonight we are dedicating the College's new dance studio in her memory," said Nazarian.



CELEBRATING THE PRESENT: Dance professor Melody Ruffin Ward, second from right, shares a moment with students (left to right) Paola Suero, Tosya Lewis, Casey Harkness, and Jamie Irving during the dedication festivities for the Fannie Helen Melcer Dance Studio on Dec. 9. (What's News Photos by Gordon E. Rowley)



LEGACY MEMORIALIZED: Billie Ann Burrill, associate professor emerita, colleague and companion of the late Fannie Helen Melcer, left, views the plaque for the dance studio which College President John Nazarian presented at the formal dedication ceremony.

It was through a "generous gift" to the College by Melcer's predecessor as dance director, devoted colleague, friend and companion Billie Ann Burrill "that we are able to celebrate the naming of the dance studio in Fannie's name," said Nazarian.

He and Burrill unveiled a plaque that will be permanently affixed to the new dance studio.

It reads: "Fannie Helen Melcer Dance Studio. Given in memory of Fannie Helen Melcer by Billie Ann Burrill, associate professor emerita. Dedicated Dec. 9, 2000."

See Dedication, page 3

Spotlight on scholarship recipients

Awarded by the RIC Alumni Association



Justin Carley
Class of 2001

Recipient of:
**Departmental
Scholarship**



"I can't find one way in which it (Rhode Island College) lacks anything compared to the more expensive private school that I was attending," says transfer student Justin Carley of West Warwick.

Born in Rhode Island, he graduated

from West Warwick High School and attended Hawaii Pacific University for one year, finding the costs too prohibitive.

Carley came back home and enrolled at RIC in the Justice Studies program. An older sister, Laura N. Carley '99, graduated from RIC and is now a school teacher.

"I chose to transfer to Rhode Island College because it was affordable, but also because many people that I know, who have attended, spoke very highly of the school," says Carley.

He praises the sociology department as being "comprised of some of the friendliest and most caring pro-

See Scholarship, page 2

Come Ice Skating with the Rhode Island College Young Alumni Group!

Don't miss our fun-filled Ice Skating Party. Whether you skate or just want to mingle, alumni, family, and friends are invited.

WHEN: Sunday, Feb. 11, 2001

TIME: 2 - 6 p.m.

WHERE: Fleet Skating Center, Downtown Providence

COST: Adults, \$7, Children, \$5

(Price includes admission, and hot beverages in heated tent.)

Call Shana Murrell at 401-456-9625 for reservations.

The Way We Were...

This popular item in What's News continues in order for you to be able to revisit your alma mater with a selection of photos from the past — the College's past, whether the current era (Rhode Island College) or past eras (Rhode Island College of Education or Rhode Island State Normal School). We invite your contribution of old photos, along with sufficient information about each, such as who's in the photo and what they are doing, the year it was taken and place (if possible). In the meantime, we'll continue searching our files for interesting pictures of past College life.



ROOT BEER TOURNAMENT: Back in the late 1960s and early 1970s, there was a considerable summer school population at the College. In order to provide recreation for summer students a tennis competition, called the Root Beer Tournament, was organized by John Taylor of the Recreation Center. We cannot identify everyone in the above photo, but those we can include (sitting l to r) Richard Charvis, Marcia Tierney '69; and a 30-year-younger John Taylor. (Standing l to r) an unidentified faculty member; and former faculty members Edward Bzowski and Doris Hlavsa. (file photo)

The next issue of
What's News
is Monday, Feb. 12.

DEADLINE

for submission of copy, photos, etc.
is Friday, Feb. 2.

Story ideas can be emailed to smurphy@ric.edu.

WHAT'S NEWS AT RHODE ISLAND COLLEGE

Editor: Shelly Murphy

Associate Editor: George LaTour

Staff: Pauline McCartney, Word Processing Supervisor; Gordon E. Rowley, Photographer; Cynthia L. Sousa, Writer/Technical Assistant

What's News at Rhode Island College (US681-650) is published biweekly by Rhode Island College Office of News and Public Relations, 600 Mt. Pleasant Ave., Providence, RI 02908. It is published throughout the academic year except during semester breaks. Periodicals postage paid at Providence, RI

Postmaster: Send address changes to What's News at Rhode Island College, Office of News and Public Relations, 600 Mt. Pleasant Ave., Providence, RI 02908

Deadline: Deadline for submission of copy and photos is noon the Friday two weeks before publication date.

Telephone: (401)456-8090

Fax: 401-456-8887

Printing: TCI Press, Seekonk, Mass.

Focus on Faculty and Staff

Faculty and staff are encouraged to submit items of information about their professional endeavors to What's News, Office of News and Public Relations, 300 Roberts Hall or e-mail them to csousa@ric.edu.



Len West, adjunct professor in the educational studies department, presented a science education workshop for elementary and middle school students from Cranston and Warwick.

Each student participated "hands-on" with grinding and polishing an aluminum mirror for the outside of the Starshine 2 space satellite. NASA astronauts will place that satellite in Earth orbit from the Space Shuttle Endeavor during its STS-108 mission to the International Space Stations.

Joseph Zornado, associate professor of English had a book, *Inventing the Child: Culture, Ideology and the Story of Childhood*, published last month.

The book argues that adults invent childhood and so, by living out ideological concepts in child-rearing relationships, invents the child as well. The stories adults tell children about the child and childhood — known as children's literature — is of central importance.

Along with traditional forms of children's literature, the book considers Shakespeare's childhood and the Renaissance child in order to engage and interpret *Hamlet* from a startlingly fresh perspective.

Chapters take up seminal voices in children's literature and children's culture, including the Brothers Grimm, Lewis Carroll, Sigmund Freud, Walt Disney, Adolf Hitler, and others, all foregrounding in order to understand how the relationship between the adult and the child represents a site of cultural reproduction. Daniel Quinn, author and social critic, calls *Inventing the Child* "one of two or three of the most eye-opening, illuminating and important books I've ever read."

Peter B. Brown, professor of history in Russian and Eastern European Studies, presented a paper on "Violence, Coping-Mechanisms,

and Personality in the Earlier Life of Peter the Great" at the Russian Studies Workshop at the University of Chicago. In the paper, he took issue with prevailing orthodoxy treating Peter as a "rational actor," and instead, drawing upon recent work on trauma, fixed attention upon this head of state's potentially debilitating psychological afflictions that periodically threatened to obtrude and derail his policies.

This was followed by two papers given at Harvard University: "Guarding the Gatekeepers: Punishing Errant Officials in 17th Century Russia" at the Davis Center for Russian Studies and "New Thoughts on the Bohdan Khmel'nyts'kyj-Aleksei Mikhailovich Relationship (Russo-Ukrainian relations) in the 1650s" at the Harvard Ukrainian Research Institute.

The latter paper explores the differing, culturally conditioned thinking of the two leaders — Tsar Aleksei and Cossack leader Khmel'nyts'kyj — in adjusting to this union.

Brown says the combining of Russia and Ukraine in the 1650s was "a milestone in Eastern European development."

Last July Brown traveled to Moscow for a week where he read 17th century documents at the Russian State Archive of Ancient Acts. Then he went to Estonia to attend the week-long International Finno-Ugric Conference in Tartu where he presented the paper "How Should We Model Uralic and Slavic Contacts in the Lands of Medieval and Early Modern Rus' (Russia), 800-1700 A.D.?: A Comparison to Celtic, Germanic and Roman-Latin Contacts."

The conference, devoted to the Uralic-speaking (non-Indo-European) peoples of northern Eurasia, attracted large contingents of scholars from Finland, Hungary, Estonia and Russia, reports Brown, who says that, in addition to establishing "many useful academic contacts," he had the opportunity to talk with Estonian President Lennart Meri.

Champlin Continued from page 1

Computer-assisted foreign language learning

The \$149,556 grant for computer-assisted foreign language learning will fund computer equipment, peripherals and software to be used in the Center for Management and Technology.

The primary goal is to provide a means for students to achieve fundamental foreign language skills for international business. The equipment will be used in instruction for undergraduate students as well as representatives from business and industry in the state through

the Center for Management and Technology and the Outreach Programs which are housed within the Center.

The grant will provide equipment for three classrooms to be used daily for foreign language instruction and for all levels of computer information systems instruction, among other subjects.

This would build upon and significantly expand the use of multi-media teaching techniques that staff in the Outreach Programs has been employing with great success for some time.

Scholarship Continued from page 1

fessors I have ever encountered." The Dean's List senior missed out "for some reason" this year on the Pell Grant that he had been receiving, so was especially happy to receive a RIC Alumni Departmental Scholarship. That, he says, "will help make up for the loss and make my final semesters at Rhode Island College a little less

stressful and a lot more successful." The scholarship supplements income from his part-time job as a telemarketer for DialAmerica Marketing, Inc. After graduation, Carley would like to study law or work in government "or a combination of both." G.L.

Fitta's 18 years as controller adds up to a lot of memories, sense of accomplishment

by Shelly Murphy
What's News Editor

After 18 years overseeing the financial operations for Rhode Island College, John Fitta retired at the end of December 2000, leaving behind a legacy and a staff of which he is proud.

"It is great to come to the end of a career and be able to say you love what you are doing," Fitta said a few days before his last day at the College. "I have a passion for this profession (accounting), for the role of the trusted advisor. It's one of the last professions with integrity," he declared.

In discussing his career which included service at the College, in the state office of auditor general, and in a private CPA firm, his passion and commitment to making a difference through what others might consider to be a mundane profession is apparent.

"My principal career was 12 years in public accounting in a CPA firm. Then I joined the office of Auditor General in 1974. That was my entrée into state service. It was patterned as a watchdog agency for the taxpayer. I had spent my career saving on taxes for businesses. It was an opportunity to do it for average citizens," Fitta relates.



JOHN FITTA

After six years at the Auditor General office, he served as acting controller at the University of Rhode

"It is great to come to the end of a career and be able to say you love what you are doing. — John Fitta

Island before coming to RIC in 1982 for what he figured would be a few-year stint and "an opportunity to have my own shop, show what I can do."

"It's been wonderful. John Nazarian has really let me do my thing," Fitta said. The challenges and the people have kept him here. "We've had to be really innovative in the management of resources to accomplish the things we have. We've had to anticipate ways to manage. We've had times when state appropriations changed and funds were actually taken back mid-year," he recalled. By employing standard accounting principles, such as underwriting major expenses over a period of time, they've managed to keep things under control.

"I've always tried to do what was right and fair. The best legacy I could have is to have people feel they were treated fairly," he said. "I am leaving a staff that is well informed, that knows what they are doing. The employees in the business units are the unheralded workers. I will miss the people."

As controller at the College, he

also served as assistant treasurer of the Rhode Island College Foundation. During his tenure, he worked with four different executive directors of the Foundation and saw the Foundation's assets grow from \$400,000 to \$10 million.

Looking ahead, Fitta has no specific plans although he doesn't rule out returning to work as a consultant or for short term, interim assignments. In addition, he and his wife Catherine plan on travelling. "I don't know anything but working. I've worked since I was 10 years old. At Christmas time, I would dress up in a jacket and bow tie and open the door for customers (at a store). It's interesting that I am leaving at the same time of year. It's going to be very strange for me when I wake up Tuesday (Jan. 2) and don't come to work."

On that Tuesday, Paul Forte joined the College as assistant vice president for finance and controller. Forte comes to the College from URI where he served as controller. He previously worked with Cox Communications, Bell Atlantic, Coopers & Lybrand and the Massachusetts State Auditor's Office.



PAUL FORTE

Dedication

Continued from page 1

Nazarian introduced Ellie Lemaire, retired associate director of athletics at the University of Rhode Island and "a genuine pioneer" in women's collegiate athletics, to represent Melcer's family and friends.

Lemaire, who said she was "very fortunate" to have known Melcer for almost 40 years, termed Melcer the "gentle giant of the health, physical education, recreation and athletic department of this wonderful College."

She said Melcer "took a program that had a firm foundation — developed by her long-time devoted friend Billie Burrill — and with her vision, gave it a unique direction with an emphasis on the artistic elements of dance as an art form, a communication tool and a self-gratifying experience.

"Perhaps unknowingly, she used the skills she developed early in her career as an amateur photographer to be the source of her uncanny gift of

always being able to focus on the true essence of everything, be it music, a picture, dance, people, the Bay or life in general.

"She had the ability to cut through both the window dressing or the drabness of a piece of art or a person, and see the truth and beauty in the subject. She was attracted to sincerity, simplicity and unpretentious stature.

"Not only was Fannie able to recognize the essential qualities of beauty and truth, but she possessed the unique ability of being able to teach others to appreciate it and express it, particularly through movement.

"Music and dance kindled her spirit and transformed her into a fountain of joy and exuberance," said Lemaire.

Renowned dancer/choreographer Clay Taliaferro, a close friend and colleague of Melcer's, who performed the opening dance — "Rainbow Etude" based on "Rainbow 'Round My Shoulder" (1959) — in the dance con-

cert that evening, said at the reception after the dedication and concert that he "felt Fannie's presence every day I've been here."

He said he first met Melcer 31 years ago when she placed her hand on his shoulder and asked him if he could "choreograph like you dance?"

Taliaferro said Melcer was "a woman who strived for excellence and never stopped," adding, "It's your responsibility to carry on her legacy."

Dante DelGiudice, RIC dance director, thanked those responsible for the evening's concert and dedication of the dance studio, which he termed his "laboratory" and "a beautiful legacy."

The concert featured Taliaferro and dancers from the Duke University dance program.

Rehearsal director for the piece "Dance in FM," which Taliaferro created for the RIC dancers in 1978, was Melody Ruffin Ward. It was performed by the RIC dancers and dance alumni.



What's News

RIC begins student-athlete phon-a-thon

Current Rhode Island College student-athletes are in the process of contacting former RIC student-athletes, via telephone, with membership information about The Anchor Club.

The Anchor Club is the organized fundraising association for the Department of Intercollegiate Athletics, Intramurals and Recreation. The annual financial support received from alumni and friends provides the resources necessary to enhance student-athlete services, training facilities, and academic success, as well as the quality of the overall athletic experience.

Dates and times are as follows: Jan. 22-25, 29-31 from 4 to 8 p.m.

Health Services notice

Any 1991 RIC graduates wishing to obtain their health records, may arrange to do so by calling Health Services, ext. 8055. All health records without activity since 1991 will be shredded in May.

Alumni awards, honor role nominations deadline nears

Nominations are being sought for the 2001 Alumni Awards and Honor Roll at Rhode Island College which will be awarded at the annual Alumni Awards Dinner Thursday, May 10.

Deadline for receipt of nominations and supporting material by the Alumni Office is Feb. 1.

The awards to selected outstanding alumni are presented to graduates and community leaders whose personal and professional attainment and service to the College and community bring honor upon themselves and upon RIC.

Candidates are chosen on the basis of professional achievement, community service and service to the College or alumni association.

The honor roll nominations are made through the academic departments, but input from the College community for all categories is encouraged. The process is confidential and individuals should not be notified of their nomination.

The alumni award categories are:

- Alumna/Alumnus of the Year
- Charles B. Willard Achievement Award
- Alumni Service Award
- Alumni Faculty Award
- Alumni Staff Award

For more information, call the Alumni Office at 401-456-8086.

Foundation &

Reconnecting with family, friends on the West Coast



Marguerite M. Brown
Vice President,
Development
Executive Director,
RIC Foundation

What do the following have in common? A special agent for the U.S. Government; an invited guest of President Clinton's Vietnam tour last November; a consultant for the high tech industry; an expert in atmospheric, pyrotechnics and special effects for the film industry; the managing editor of *Dog Fancy Magazine*; and a woman who, for her birthday, drove a NASCAR race car at 155 mph? They are all alumni of Rhode Island College who recently joined President Nazarian and staff members for

three receptions in California.

On Dec. 28, 2000, the women's basketball team left for California to play several games on the West Coast. In conjunction with that trip, President Nazarian, Nancy Hoogasian, and I, with the assistance of the Alumni and Foundation offices, scheduled three receptions for California alumni and friends.

Our first was in San Jose. The reception, hosted by Fran '50 and Albert DiPippo and held at the San Jose Country Club, provided a beautiful venue for sharing stories and information among alumni and friends. Michael Adler '85, our government special agent, joined Joan Casement '57, Dang Pham '79 (our Vietnam tour member), Homer Hoyt '40 and his son Ken, Jim White '74, and David Pollack '87 (our high tech consultant).

We then moved to Palm Springs where President Nazarian hosted

the second reception at his California home. Joining the women's basketball team for an afternoon of good food and conversation were Tom and Mary '50 Cameron, Edmund '65 and Janice Drew Costa, Amy Dworman Bianco '82, Martha Everett '92 (our editor of *Dog Fancy Magazine*), Stephen '37 and Donna Jundanian, Judith Maeda '77 (our NASCAR driver) and her husband Norman Price; Patricia Rice '74 and her husband Michael Williams; Gail '71 and Max Smith; Caitlin Casement '84, Janice Tanury '84, and Vincent Arico '85.

On to Hollywood! Howard Fine '81, recently returned from New York and London, opened his acting studio to the Rhode Island College crowd for a delightful Sunday afternoon. Gathering in the art deco studio with Howard were Trish Farley '63, Agnes '73 and Anne '73 Ferris, Rosalyn Laudati, Paul and Marybelle

the second reception at his California home. Joining the women's basketball team for an afternoon of good food and conversation were Tom and Mary '50 Cameron, Edmund '65 and Janice Drew Costa, Amy Dworman Bianco '82, Martha Everett '92 (our editor of *Dog Fancy Magazine*), Stephen '37 and Donna Jundanian, Judith Maeda '77 (our NASCAR driver) and her husband Norman Price; Patricia Rice '74 and her husband Michael Williams; Gail '71 and Max Smith; Caitlin Casement '84, Janice Tanury '84, and Vincent Arico '85.

On to Hollywood! Howard Fine '81, recently returned from New York and London, opened his acting studio to the Rhode Island College crowd for a delightful Sunday afternoon. Gathering in the art deco studio with Howard were Trish Farley '63, Agnes '73 and Anne '73 Ferris, Rosalyn Laudati, Paul and Marybelle



SAN JOSE: Homer Hoyt '40 joins Michael Adler '85 at the reception at San Jose Country Club on Jan. 3. Also joining College President John Nazarian and hosts Fran '50 and Albert DiPippo were Joan Casement '57, Dang Pham '79, Homer's son Ken, James White Jr. '74, and David Pollak '87.



FRONT AND CENTER IN L.A.: a special effects expert for the Howard Fine '81 at the Howard Los Angeles at the recent reception with friends in the area.



ON STAGE! Alumni and friends joining College President John Nazarian at the Howard Fine Acting Studio in Los Angeles included, left to right, front: Rosalyn Laudati, Dorothy Conlon '94, Trish Farley '63, President Nazarian, Sebastian Paul Musco, Marybelle Musco, and Helen Hardink '73 (who just happened to be visiting from Hawaii). Back: Jim Lavery '82, Joel Blanchard '82, Howard Fine '81, Agnes Ferris '73, Anne Ferris '73, and Kathy Palmer '66.

Alumni Affairs

West Coast

Musco, Kathleen Palmer '66 and her mother, visiting from Rhode Island, Dorothy Conlon '94 (no, it's not a typo — Dorothy did indeed graduate after Kathy), James '82 and Lois Lavery, Karen Hardnik '73 (who happened to be visiting Anne and Agnes from her home in Hawaii), and Joel Blanchard '82 (our special effects expert).

I can't begin to tell you the number of roles our alumni are playing on the West Coast. These trips are part of our continuing effort to reconnect with our alumni and friends, to thank them for their support, and to hear again just how important their education has been to their lives and careers. We will continue to plan local, regional, and national events like these to keep the dialogue flowing. You are Rhode Island College — and we want to hear from you!



BIG HELLO from Palm Springs! Joining College President John Nazarian at the Palm Springs Reception on Jan. 6 were, left to right, front: Mary Cameron '50, Janice Tanury '84, Amy Dworman Bianco '82, Patricia Rice '74, and Janice Costa; back: Donna Jundanian, Stephen Jundanian '37, Gail Smith '71, Caitlin Casement '84, Michael Williams, Martha Everett '92, Judith Maeda '77. Back row: Max Smith, Tom Cameron, Vincent Arico '85, Edmund Costa '65, and Norman Price



Joel Blanchard '82, in the film industry, joins the Fine Acting Studio in reception for alumni and



PALM SPRINGS: Ray Tessaglia, assistant head women's basketball coach, (left) and David Bouthiellier, coordinator of student athlete support, (right) joins Vincent Arico '85 and Martha Everett '92 at the Palm Springs reception.



THANKS FOR THE HOSPITALITY: Basketball captain Beth Taco '01 presents San Jose hosts Fran '50 and Albert DiPippo with a signed team photo on the team's recent trip to California. The DiPippos hosted the team on New Year's Eve day for lunch at their home in San Jose

The names of full-time students who attain a minimum grade point average of 3.25 in a

Alicia A Abdalian
 Gregory R Abram
 Benjamin Q Adams
 Kelly J Adams
 Oluwaseun O Adegbesan
 Hilson M. Aguiar
 Michelle S Ahlborg
 Joshua O. Akhigbe
 Bamidele A Akinnusotu
 Cheryl G Albernaz
 Nicholas S Alfred
 Kimberly E Allenson
 David J. Allison
 Michelle L Allyn
 Lysie L Almeida
 Monica E Almeida
 Sonia M Almeida
 Megan A Almond
 Nancy L Alves
 Colleen Y Amaral
 Courtney A Amaral
 Lindsay Amaral
 Ryan G Anas
 Shaney M Andella
 Katie L Anderson
 Tara M Anderson
 Beverly Andrade
 Joseph F Andrade
 Tanya L Andrade
 David M Andreozzi
 Tracy R Andriole
 Alison L Angers
 Kristin P Angilly
 Cynthia A. Antignano
 Desiree A Antonelli
 Justin J. Anzeveno
 Christine Aragao
 Laura F Aragao
 Erica M Arbigue
 Katherine R Archambault
 Amanda Armenti
 Deborah Armstrong
 Dana M Arnold
 Jessica B Arrighi
 Elise M Arruda
 Kristie J Arruda
 Christine T. Arslanian
 Nicole L Arteaga
 Bethany A Arthurs
 Candace A Auclair
 Nicole Auclair
 Kevin P Audette
 Theodore August
 Darcie E Aungst
 Jennifer A Babcock
 Lisa A. Baccaire
 Jill A Badeau
 Bridget D Baird
 Roger L Bairos
 Abbey M. Baker
 Jeremy M Baker
 Willette C Balsamo
 Rebecca L Bannon
 Shannon A Barata
 Stephanie P Barbieri
 Fatima Barbosa
 Manuel Barbosa
 Lori A Barile
 Tara M Barnett
 Filomena Barresi
 Andrew R Barron
 Linda K Barron
 Alanna N Barta
 Michelle A Battista
 Heather A Bean
 Christine M Beaubien
 Christopher R Beaucage
 Danielle L Beauchemin
 Rachelle M Beauchemin
 Shannon E Beaudoin
 Pauline B. Beaudreault
 Holly E Beaudry
 Ian Beauregard
 Robert J Beauregard
 Angela M Bedard
 Debora E. Begnami
 Sherrielyn M Belanger
 Todd A Belcher
 Bethany L. Belisle
 Nicole D. Belisle
 Jennifer Bellizzi
 Heather A Bellotti
 Dawn E Benson
 Melissa A. Bento
 Molly C. Berardi
 Marina Berdak
 Gregory P Berger
 Yael Bernstein
 Julia A Berry
 Michael J. Berry
 Kellie R Berthiaume
 Keith R Berube
 Lucy M Bettencourt
 Barbara A Bianco
 Jennifer M Bifulco
 Regina A Bifulco
 Cara L Bileau
 Ilana Bilik
 Nataliya Binkina
 Rebecca E Binns
 Megan E Birch
 Darlene L Biron
 Elisabeth D Bjernestad
 Heather C. Black
 Kyle L Black
 Michael J Blackburn
 Kyle Blanchette
 Michele A Blanchette

Rachel L Bodner
 Heather A Bogossian
 Kim Bolano
 Christina J Bolduc
 Andrea L Bolton
 Melissa A Bolton
 Elizabeth M Boocock
 Stephanie M Boocock
 Stephanie N Booth
 Emily V Boskos
 Edward S Botelho
 Ernest J Botelho
 Manuel Botelho
 Michelle M Botelho
 Monica S Botelho
 Joshua W Bottomley
 Maria J Bouchard
 Kathryn M. Boucher
 Matthew M Boucher
 Jennifer R Boudreau
 Robin Boudreau
 Timothy J Boudreau
 Tracy M Boudreau
 Marie F Bourgerie
 Amy-lynn Boutelle
 Jennie E Bowering
 Martha R Bowling
 Keri E Boynes
 Bridgid-Leigh K. Brady
 Melissa A Brady
 Julie M Braga
 Jennifer M Branchaud
 Jaimie L Brayton
 Nicole Briganti
 Angela L Briggs
 Elizabeth J Brillon
 Abbey M. Brooks
 Crystal L Brown
 Kristen M Brown
 Sandra J Brown
 Tiffany R. Brown
 Tina M Brown
 Justin R Broz
 Lisa A Bruneault
 Jennifer M Brunelle
 Brigid K Bucci
 James M. Buchanan
 Nicole M Bucka
 Patricia A. Budrock
 Mary E Bullock
 Michelle L Burgoyne
 Russell A Burns
 Kelly J Burrows
 Susan G Burt
 Sara R Burton
 Courtney J Bush
 Marcie K. Bush
 John Buss
 Richard M Butler
 Alicia J Byrd
 Carl E Bzowski
 Corinne E Cabral
 Nancy M Cabral
 Karen Caesar
 Sheila K Cahill
 Daniel J Caine
 John Paul Calci
 Stephanie B Callaghan
 Mary C Callahan
 Ross T Callen
 Kristin C. Calouro
 Jillian Ann Calvao
 Dawn M Calvitto
 Michael A Camera
 Andrea N. Camille
 Jennifer A Campbell
 Kerri L Campbell
 Angela M Cano
 Jacquelyn T Cappelli
 Maryanna Capraro
 Alyssa R Cardin
 Sarah B Cardin
 Erin L Cardone
 Elise A Careau
 Amanda R. Carey
 Justin L Carley
 Celine R Carlier
 Brian B Carney
 Donald L Carrara
 Nicole M Carrier
 Lisa S Carvalho
 Thomas L Casale
 Dalelah Casey
 Amanda J Casiano
 Dina R. Castellucci
 Kim M Castigliero
 Amanda M. Castore
 Oneika D. Castro
 Shannon L Cauley
 Desiree Celadon
 Jacqueline L Celeste
 Peter R Ceprano
 Katie A Chadwick
 Alissa L Chamberland
 Mary Chanthaphoung
 Lisa A Chartier
 Anita C Chase
 Carrie A Chasse
 Jennifer L. Chaves
 Nicole C. Cheney
 Heather L Chenot
 Dawn M Chevalier
 Thy Chhan
 Channavy Chhay
 Katie L. Chilinski
 Cheryl B China
 Andrew P Chisholm

Susan Chiu
 Kelly M Choquette
 Jamie L Christina
 Robin K. Christy
 Thomas A. Chrostek
 Bunna Chu
 Donna M Ciccarelli
 Adrienne M Cinelli
 Joseph Ciotti
 Cynthia J Clark
 Karolyn Clark
 Stephanie A Clark
 Stephanie A. Clark
 Steven P Clarke
 Jessica R Clegg
 Amy L Clune
 Donna M Coderre
 John J Coen
 Erin L. Coffey
 Michaela C Colapietro
 Michael P Colardo
 Giustinian E Colarusso
 Karen A Colicchio
 Pamela L Collard
 Aja L. Collins
 Cara T Collins
 Frederick G. Collins
 Jarred T Collins
 Amy L. Combs
 Christopher E Conley
 Jennifer L Conlon
 Thomas P Conlon
 Michael P. Connors
 Melissa A Conroy
 Kerri-lynn Constancia
 Sarah A Conway
 Allyson Cook
 Michael Cook
 Nichole L Cook
 Keri-ann Cooney
 Lisa E Cooney
 Mokanna E Cooper
 Teresa L Cooper
 Susan I Copley
 Matthew M Coppola
 Nicole A Coppolino
 Dylan M. Corbett
 David Cordeiro
 Claudia L Cordon
 Michael H. Corson
 Kara L Costa
 Melissa A Costa
 Melissa M Costa
 Robert M. Costa
 Tonya A Costa
 Kevin P. Costigan
 Brandon R Cota
 Alan M Cote
 Jonathan A Cote
 Lauren A. Cotoia
 Stacy Coughlin
 Jennifer M Courtney
 Aimee D. Couto
 Kristian D Couto
 Donna M Couture
 Russell Crabtree
 Vanessa K Craveiro
 Jeffrey A Crins
 Toni A Cristi
 Michael C Crittenden
 Philip L Croteau
 Sarah L Crowell
 Garrett N Crozier
 Tara M Crudden
 Dulibel Cruz
 Rebecca A. Csizmesia
 Crystal A. Cunha
 Heather A Cyr
 Julie A D'amico
 Kimberly A D'Andrea
 Lori J D'Antuono
 Annette D'arezzo
 Sarah B Cardin
 Erin L Cardone
 Sergio E Da Costa
 Denise S Dacier
 Kevin G Daignault
 Gregory D Dalpe
 Jason F Danahy
 Heather L Dandrow
 Robyn L Daniels
 Timothy J Dannenfelser
 Susan N. Dansereau
 Derek J. Davenport
 Tifany L David
 Bethany A Davis
 Joshua D Davis
 Meaghan M Davis
 Rachele A Davis
 Yuna Y Davtyan
 Caroline Dawson
 Judith L. Day
 Michael W. Day
 David T De Angelis
 Renee D De Beaulieu
 Vanda G De Burgo
 Daniele E De Cristofaro
 Christopher T De Fraga
 Alicia M De Fronzo
 Matthew D De Gruchy
 David P. de la Cruz
 Joel A De Marco
 Bethany T De Nardo
 Ronald W De Simone
 Anne-marie Dean
 Justine M Dean
 Christopher J Dearlove
 Christina G. DeBarros

Leslie A DeCesare
 Jared R Defond
 Lisa M DeFusco
 David M Dekonski
 Melissa A Del Nigro
 Robyn M Del Ponte
 Gina M Del Pozzo
 Julie A Del Pozzo
 Marc F Del Sesto
 Jessica Del Signore
 Justin M Delaire
 Robert DeLiello
 Kathleen S. Deluca
 Alfred B Demaio
 Paula J Demuth
 John K Dennewitz
 Richard Denningham
 Kristen J Depatie
 Paul E DeRita
 Joseph P Dermody
 Catherine M Derouin
 Alicia M Derooy
 Donna A Desmarais
 Laura B. Desmarais
 Kerry L. Desrosiers
 Kristen L Desvoyaux
 Melissa J Detora
 Lauren J Dettore
 Tara A. Devany
 Deanna M Di Bacco
 Dana A Di Benedetto
 Alicia E Di Masi
 Jennifer L Di Nola
 Roy T Di Nola
 Dawn M Di Petrillo
 Stacy L Di Pietro
 Joanne M Di Raimo
 Kimberly H Di Tusa
 Lauren C Dias
 Christina M Dibiasio
 Kristen DiChiaro
 Andrea DiCicco
 Emily D. Dickinson
 Sarah E Dillon
 Antonio DiManna
 Mamadou M Diop
 Stacy E Diraimo
 Jennifer J. Dittman
 Dominique E. Doiron
 Marcia A Dolan
 Melissa K Dolan
 Holly M Domingos
 Brian W Donahue
 Wendy A Donnelly
 Meghann E Donovan
 William J. Donovan
 Julie K Dorazio
 William A Dorry
 Courtney D Doucette
 Keith R Doucette
 Kelli J Downes
 Cheryl-Ann Drew
 Lauren E Driscoll
 Jennifer L Dronoy
 Erica L Drzal
 Justin T Drzal
 Andrea M Dubois
 Paula C Dubois
 Heather A Dubrule
 Leslie S Ducharme
 Lisa C Ducharme
 Anthony M Duclos
 Lindsay L Dufault
 Marissa J Dufault
 Jenifer E Duggan
 Rebecca A. Duguay
 Jacqueline D. Duguay
 Lauren M. Dulude
 Sharon P Dunkel
 Sarah A. Dunklee
 Christina M Dunne
 Olga Dupa
 Melanie A Dupuis
 Colette A. A Dupuy
 Laura J Durnik
 Christopher Durst
 Sabrina J Dworkin
 Angela C Dyl
 Jaime L Eagan
 Leslie A Eastwood
 Patrick Edouard
 Daniel A Egan
 Kelly E Egan
 Jennifer R Eibel
 Olutayo E Elemo
 Donna T. Elliott
 Sasha L Ellms
 Shana Emmett
 Daniel D Enes
 Stephanie A Enos
 Tracy A Enos
 Donna M. Enright
 Brooke C. Ensign
 Wendy L Erickson
 Amy J Ericksson
 Jacqueline Espinal
 Leonel A Estrada
 Kimberly A Eudy
 Bryn Alan Evans
 Jennifer B. Ewing
 Catherine A Fabrizi
 Laura K Fabrizio
 Melissa A Fabrizio
 Kristopher C Falcone
 Jody J Fallon
 Christopher Farias
 Emily R. Farley
 Ellen C Farrell
 Carla A Fazio

Jessica E Feeley
 Susan L Feiro
 Toni J Fellela
 Daniel J Fero
 Dayna E Ferrara
 Allen D Ferreira
 Kristen L Ferreira
 Kristina L Ferreira
 Mark A. Ferreira
 Patricia J Ferreira
 Susan J Ferreira
 John D Ferrigno
 Alyson G Fester
 Christine M Fife
 Brian C Fineberg
 Heather C Fink
 Anthony J Finucane
 Heather I Fisch
 Lindsay A Fischer
 Shannon Flood
 Stephanie A Florio
 Kerri B Flynn
 Stacey A Follansbee
 Becky L Fontaine
 Brian Fontaine
 Kelly R Fontaine
 Dawn K Forte
 Ashley E. Foster
 Jenna L Fournier
 Melissa L Francis
 Tyler B Francis
 Tracy L Francisco
 Alyson M Franz
 Jessica L Frechette
 Amey S Fregeolle
 Janelle Freiman
 Melissa S Freitas
 Susan Freitas
 Kedrin A Frias
 Lynsey L Fullerton
 Melanie B Furtado
 Melissa M. Furtado
 Jenny L Gadoury
 Holly E Galipeau
 Joyelle M Galli
 Stephanie Gallo
 Christopher Michael Gamache
 Andrea Garille
 Deborah J Garneau
 Brent c. Garriepy
 Ryan E Garrity
 Mary A Gasbarro
 Dawn M Gasior
 Katherine B Gately
 Jessica M Gauthier
 Bethany N Gauvin
 Michael J. Gavin
 Bethany A Geaber
 Carrie B Gelinas
 Stephanie N Gelsomino
 John V. Gemma
 Nicole M Gemma
 Lindsey R. Gemme
 Christopher E Gencarella
 Daniel M Gendreau
 Timothy S Geraghty
 Michele E Gerber
 Stephen M Gerling
 Brandie A Gerrish
 Lynn M Gervais
 Robert W Gervais
 Robert Giambo
 Bethany L Giammarco
 Kevin M Gibbs
 Jennifer J Gilbert
 Kerry L Giorgi
 Steven D Girard
 Daniel E. Giroux
 Toni A Giusti
 Galina Gladkova
 Gayle L Glew
 Christina A. Gloria
 Michael G Gobin
 Kurt S Goding
 Christin L Goff
 Dana R Goff
 Kimberly L. Golden
 Jessa N Goldstein
 Jairo A Gomez
 Joanne I Gomez
 Juan F Gomez
 Melinda S Goncalves
 Jemima M Goodlin
 Alycia M Gordon
 Stephanie A Goryl
 Robert R Gosselin
 Erin M Gouin
 Nicole R. Goulet
 Mary B Gousie
 Anabela L Gouveia
 Delia L Gouveia
 Joyce A Grace
 Holly A Gray
 Jennifer L Gregoire
 Lisa O Gregoire
 Ana M Gregori
 Mary Anne Gregory
 Anna Gregson
 Cheryl L Gridley
 Deborah Y Griffin
 Sarah J. Griffiths
 Matthew B Grizack
 Ingrid S Grothe
 Jeffrey C Grover
 Melissa J Grover
 Sheila M Grzych
 Elizabeth A Guadagni
 Michael T Guarnieri

Jessica L Guilmain
 Juan A Gutierrez
 Nancy M Guzman
 Francis E. Haddad
 Kara M Haddad
 Kathleen B Hagan
 Jennifer D Haggerty
 Aimee L Haile
 Heather R Hall
 Meghann E Hall
 Matthew L Hallam
 Ann-Frances Hamill
 Joanne L Hamilton
 Darcie L Hanaway
 Jason A Harding
 Thomas A. Hargreaves
 Casey J Harkness
 Yolanda E Harley
 David S Harrington
 Jessica R Harris
 Kimberly F Harris
 Patrick L Harris
 Sarah L Harris
 Amanda L Hartley
 Jacob J. Harvey
 Daniel J Hassell
 Karli M Hastings
 Trisha Haworth
 Caroline N Hazlet
 Jessica A Head
 Crystal Lee G. Healey
 Jason C Heath
 Paul J Heatherton
 Kristen L Hebert
 Sara B Hebert
 Samantha Grace Hedden
 Catharine C Hellwig
 Dok C Hemond
 Joan L Hencler
 Kathryn E Hennessey
 Kevin P Herchen
 Laura B Hicks
 Audrey A Hinman
 Son K. Ho
 Tetsuya Honda
 Lisa M Hoopis
 Daniel A Hopper
 Sheila M Hokin
 Amanda Howard
 Sharon M. Howard
 Amanda F. Howarth
 Rachel A Hughes
 Vanessa L Hull
 Mary E Hunt
 Elizabeth A. Hurley
 Sara E Hutchings
 Amanda M. Hutchins
 Derek J. Iacobucci
 Bethany L Iacoi
 Danielle Iacovone
 Michael F Iannone
 Rachel K Iannucci
 Jessica M Iiams
 Amy L Ingalls
 Melanie Integlia
 Joseph Intrieri
 Joseph J Iozzi
 Tracey M Iwuc
 Monica E. Izicki
 Dayna M Izzie
 Alfred A Izzo
 Julie R. Jackvony
 Kevin M Jamro
 Jaclyn E Jamroz
 David P Jarvais
 Dustin Jenkins
 Kerri L. Jenkins
 Tanya A. Jensen
 Amy T Jerominek
 Christy M Jewell
 Rachel E Giacovelli
 Christiana V Johnson
 Hannah B. Johnson
 Paula J Johnson
 Robin J. Johnson
 Stephen C. Johnson
 Filomena Johnston
 Michael J Jollie
 Deidre-lyn A Jordan
 Heidi A Jordan
 Melissa A Jordan
 Tamarind A. Jordan-Stowell
 Youssef Jorge
 David C Jubinville
 Kimberly M Kaminski
 Patricia A Kammerer
 Julie J Kanaczet
 Benjamin A Kaplan
 David M Keefe
 Tammy A Keefe
 Caitlin F. Kelleher
 Courtney M Kelley
 Erin K Kelley
 Jason E Kempe
 Michelle M. Kennedy
 Jessica L Kenyon
 Thovnevilay Keomanykouth
 Allison L. Kersch
 Jennifer M. Kesack
 Amie L Kesson
 Nikki L Kettle
 Michelle J Kiernan
 Mark A King
 Mathew J King
 Melissa M King
 Memeh F Kizekai
 David E Klek
 Jennifer L Kohanski

Fall 2000

Every semester are placed on the Dean's List in recognition of their scholastic achievement.

Emily J Kohl
Victoria Konovalenko
Shannon J Kramarski
Irina Kratik
Amy L Krzyzek
Ka Z. Kue
Sasi Kumar
Shayna Teresa Kupis
Bonnie L Kusiak
Kelly M La Chance
Courtney Labbe
Joseph R Labrecque
Megan L Labrecque
Janet J Lachapelle
Kristina E. Laczynski
Kathryn L Laduke
Danielle M. LaFleur
Stefanie L Lafleur
Tanya M Laforge
Brian D Lagace
Erin M Laliberte
Becky A Lamarre
Katherine M Lamb
Annemarie Lambert
Kristina L Lambert
Lori A Lambert
Troy D Lambert
Jennifer J Lambie
Corinne I. Lamontagne
Chad A Lampert
Judith M Lancellotta
Catherine L Landry
Shale A. Landry
Roland J Lane
Tracy L Laneres
Angela M Lang
Courtney A Langelo
Jill B Langford
Carrie M Langlois
Donald F. Lannon
Chantal H Lanoie
Christy A. Lanzi
Kathryn A Lapinski
Raina C LaPlante
Jennifer J Laplume
Maureen B Lapre
Nicole M Laprise
Joseph V. LaRico
Webster Larkin
Jason P Larose
Sara E Laurino
Amy E Lavoie
Jennifer L Lavoie
Kathleen A. Lavoie
Martha C Lawrence
Steven Lawton
Nicole J. LeBreux
Stacy Marie Leca
Jessica L Leclerc
Sandy L Leclerc
Mark D Leeman
Eric D Leep
Sarah T Leidecker
Sherry A Leitao
Nicole L Lemay
Justin A Lemery
Kyle M Lemery
Jessica M Lemieux
Roseann M Lenhard
Mark J Leonard
Robert J Lepage
Karen E Letendre
Ericka L Levesque
Kerri J. Levesque
Kendra L Lima
John D Lincoln
Austin G Livesey
Donna M Lobello
Paul D Lobello
Meredith A. Logan
Jason P Logie
Michael R Lombardi
Christine M Lonardo
Alicia C Longley
Andrea T Lopes
Christine L Lopes
Honorio F Lopes
Leocadia C. Lopes
Leidy D. Lopez
Isabel Loureiro
Jessica L. Lovely
John T Lowell
Brenda A Lucier Traynor
Jacob A. Ludwig
Tyler B. Lufkin
Paul M Luiz
Stacy Y Luke
Kenneth R Lupo
Carol E Lussier
Lisa E Lutrario
Kellie A. Lynch
Stacy Lynch
Amber L Lyons
Lorna A Lyons
Marissa L Lytle
Lynne M Mac Donald
Gina R. MacArthur
Susan M Maccarone
Lorie E Maguire-Henders
Jennifer M. Mailloux
Gina K Malanga
George G Malian
Judy Malpino
Arthur E Manchester
Erik J Mancyak
Robert Mandarelli
Julianne M Mandeville
Alicia M Manganelli

Jessica J. Manion
Margaret A. Manion
Anthony R Manni
Frank K. Mapes
Marissa A Marandola
Deborah J Marasco
Renee L Marcaccio
Anthony J Marchetti
Alicia S Marcotte
Jessica A. Marcotte
Kenneth D Marcotte
Anthony W Marino
Brenda L Marino
Hollie A Mariorezzi
Melissa A Marques
Kathleen E. Martel
Lena P Martel
Aja K Martin
Dianne W Martin
Brian D Lagace
Michelle R Martin
Monique R. Martin
Renee R. Martin
Steven M Martin
Teresa A. Martin
Toni M Martin
Celeste M Masse
Erin M Mastalerz
Elizabeth M. Mastrobuono
Jennifer L Matteo
Stephanie A. Mattera
Karin M Matthews
David W Mattoni
ChristopherC Mayer
Dorothea Anne Maynard
Jennifer L. Maynard
Erin M O'connor
Kevin J O'Donnell
Kelly L McCaskill
Kristen A McCaughey
Dawn M McCormick
Meghan McCormick
Jennifer L McCoy
Timothy M McDuff
Shannon L McGee
Timothy D. McGeough
Andrea B McGinn
John A McGovern
Aliza M McGrath
Ann M Mchugh
Sarah L. McKay
Jesse K McKenzie
Mary Therese McKinley
Melissa A McLaughlin
Benjamin L. McLellan
Margaret M McMahan
Steven Lawton
Robert F McNelis
Amanda L Medeiros
Christine C Medeiros
Nancy C Medeiros
Pedro A Medeiros
Rachel B Medeiros
Matthew J Medina
Kathleen B Melillo
Julie Melino
Joseph M. Mellen
Ashley L Mello
Danielle E. Mello
Jennifer L Mello
Keri L Mello
Richard F. Mello
Robin A. Mello
Crystal G. Mellor
Heather M. Menard
Rachel W Menard
Rebecca D. Menard
Steven P Menard
Marisa L Meneses
Marc P Mercier
Jennifer K Messier
Michele A Metivier
Lisa M Middleton
Jason B Midwood
Kristen M Miga
Michaela H Miller
Patricia D Miller
William P Miller
Christiana E Millette
Melissa M Misiaszek
Jessica L Mitchell
Peter J Mollo
Christine M Monahan
Christine E Moniz
Heather M Moniz
Jason J Moniz
Kimberly Moniz
Faith E. Montaperto
Sheena L. Montecalvo
Jennifer L Monty
Kelley Mooney
Chris Moore
Douglas J Moore
Evelyn M. Moore
Shelli L Moreau
Cindy M Moreira
Danielle D Moretti
Wendy A Morgan
Margaux S Morisseau
Rosemary Moronta
Deborah A Morris
Jason D Morse
Carolyn J Moseley
Heather M Mosher
Pamela A Moulico
Deborah J. Moura
Melissa E Mudgett
Amy Mullen
Jennifer B Mullen

Jill C. Mulvey
Yolande G Muoio
James P. Murphy
Melissa Murphy
Shaun P Murphy
Cynthia D Murray
Elizabeth A Murray
Lynn M Murray
Rayna M Murray
Robert A Murray
Angela L Musco
Jerome Musco
Ann-Nina R Muzzi
Saada H Mzee
Tissaigna N'Dem
Karen M Nabb
Kelly L Nadeau
Jessica L. Nappi
Jamie M Nardolillo
Sherry L Nassi
Colleen Needham
Amie J Nelson
AshleyAnna Nelson
Weayonnoh J Nelson
Jason N. Nicastro
Danielle Rose Nicotina
Mia Nocera
Jill L Noiseux
Alicia J Nolette
Danielle L Norton
Kyle T Norton
Jannette M. Novy
Frederick T Nowosielski
Christian R O'Brien
Thomas P O'Connell
Erin M O'connor
Kevin J O'Donnell
Michael J O'Donnell
Joan D O'Halloran
Dennis R O'keefe
Joan M O'Keefe
Charlene F Oakley
Aimee L Oconnor
Toyin Ogundipe
Melody L Olczak
Melissa A Oliveira
Michelle A Oliveira
Kristen A Oliver
Jennifer Ortega
Jesus R Ortega
Jill Osmanski
Mary Therese Osmanski
Christy Ottilige
Diana L Ouellette
Erin P. Ouillette
Bryan K. McMillan
Michelle J Pabst
Keith R. Pace
Alana Pacheco
Katherine S Pacheco
Lauren M Pacheco
Jill R Pado
Bethany S Page
Maria D Pais
Brian J Palazzo
Nicole C Palin
Marie D. Panciotti
Christine M Paniccia
Robert E. Paola
Aimee M Parent
Jennifer A. Parent
Tarrah P Parent
Gina M Pari
Melissa A. Parkerson
Sarah E Parramore
Elizabeth M Parrillo
Jennifer L Partridge
Jessica L Pasquarelli
Bethany L Patalano
Sara G Patnoad
Sally N Payne
Michael T Paz
Aracelis Pazmino
Kristen M Miga
Kaitlyn L Pearson
Shawn Pearson
Heather L Peckham
Kelly J Peckham
Nicola R Pekrul
Daniel A Pelicano
Peter J Mollo
Kristen Pellerin
James M. Peluso
Kristen L Penza
Jean A Pepper
Pamela A Pereira
Liz Anna Pernarella
Amy J Peront
Emily L Perron
Joshua S Perry
Kathleen M Perry
Sandra F Pestana
Joseph R Peters
Regina A Peters
Kelly M Petersen
Jerrold C Peterson
Vinessa L. Petisce
Lauren E Petrarca
Stephanie J Petricone
Tammy R Petricone
Cookie Phimmachack
Vanna Phok
Setha Phongsavan
Ann-marie Piantadosi
Jennifer M Picard
Kerri L Picard
Virginia L. Pierce
Rachel A Pike

Shanan C Pimental
Ann L Pinault
Dennis Pineault
Corinne L Piner
Diane Pinto
Robert C Pires
Sabrina R Pires
Anthony T. Pirri
Michelle D Plouffe
Donald F Poirier
Tristan E. Poirier
Julianne Pollock
Marie E Pompei
Jessica S Ponichtera
Michael C. Poole
Mark C Pora
Elizabeth A Potanas
Rose M Potanas
Sarah G. Potenza
William J Potter
Alan J Powers
Mara Poy
Michelle A Prata
Michelle Precourt
Patrick J Prendergast
Michelle L Prew
Kelly M Prior
Gretchen Proulx
Jessie M Proulx
Julie P Proulx
Melissa R Provincial
Susan L Puleo
Amanda B Pung
Lisa M Quattrini
Lutgarda Quezada
Jamie M Quigley
Karen A Quinn
Ellen G Quintin
Maria Quiray
Jennifer L Rachko
Michael J Rado
Michele L Radomski
Lauren E Ramieri
Felix P. Ramos
Jennifer L Rancourt
Christie-a T Rapko
Kelly A. Raposa
Anibal Raposo
Abigail P Raspallo
Lucky Rattanabandith
Brenda L Rattray
Trisha M Rayhill
Lonna J Razza
Arlene E Rebelo
Amy L Rectenwald
Brian M Rector
Nelly Rego
David Regoli
Jennifer L Rekrut
Rebecca A Renfrew
Tara M Renfrew
Jennifer L. Renigaldo
Hannah C Resseger
Stephanie L Rezendes
Pamela J Rhynard
Julie M Ricci
Kati E Ricci
Paula L Rich
Barbara Richard
Christopher R. Richard
Melissa A Rines
Tiina I Ristikari
Amanda L. Rivard
Hilarie A Rivard
Alicia M Rivera
Gina M Rivera
Christine M Robat
Amy E Robert
Kerri A Robertson
Yuen-ting Robin
Karen D Robinson
Nicole L Roch
Karen J. Rock
Sandra V Rodas
Michael P Roderick
Erica B Rodin
Antonio P. Rodrigues
Cristina Rodrigues
Janice M. Rodriguez
Chris J Rodzen
Andrew D Rogers
Kelly A Rogers
Michaela F Romano
Rebecca L Romano
Tara L Romano
Amy R. Ross
Angela M. Rossi
Keri L Rossi
Kimberlie A Rossi
Sharlene M Rossi
Matthew S. Round
Jacqueline M Rousseau
Jennifer L. Rousselle
Justin R Routhier
Amy C. Roy
Tracey A Roy
Timothy A Rubel
Carolyn J Rubenstein
Amy E Rudis
Tara M Ruggieri
Laura S Ruginis
Wilman F Ruiz
Paul D Rupert
Kerrin L Sadlier
Ovil R Salcedo
Michelle M Salgueiro
Kerri A Salhany
James D Salisbury

Amy B Salustio
David A Salvador
Dustyn T Sanger
Kimberly M Sanita
Waldyn J Santana
Edgar A Santos
Julia Mari R Santos
Kristen E Santos
Melissa A Santos
Paula C Santos
Andrya S Saran
Lea M Sarro
Melissa A Sarro
Jill M Sauvageau
Caitlin M. Schimmel
Kelley L Schimmel
Joanne M Schondek
Johnathan D. Schulte
Sharon H Schwartz
Jessica M Scofield
Joanna C Scoggins
Brandi Scott
Nicholas A. Seals
Cathleen M Sears
Brittany E Seavey
Kelly A Senape
Amy J Sencer
Jessica M. Senerchia
Marlene A. Senerchia
Sarah S Senerchia
Suzanne F Serra
Cheryl L Sexton
Timothy E Shannon
Kaitlyn J Sharp
Kristen Shaw
Tracy Shellard
Eamon P Shelton
Victoria L Sherer
Arthur J Sherman
Joshua J. Shireman
Amy J Sidelinger
Tanya Signore
Michael A Silva
Paul J Silva
Peter M Silva
Kerri A Silverman
Christine M Silvia
John A Silvia
Maryrose L Silvia
Robert S Silveira
Judy A Simmerer
Mark D Simoes
Susan A Simonin
Milena Siradze
Hillary L Sisson
Samuel G Sium
Casey I Smith
Haley R Smith
Jennifer M Smith
Jonathan Smith
Joseph F. Smith
Joshua A Smith
Karen L Smith
Michele A Smith
Tyler J Smith
Jennifer L Soares
Amanda A Soave
Christopher J. Soley
Michael J Solitro
Danielle V Solotke
Srey K Som
Anthony C Soucar
Christina M Sousa
Lauren E Sousa
Paul A Sousa
Timothy A Sousa
Arthur E Souza
Melissa M. Sparks
John W Spears
Laura M Spence
Daniel R Spero
Michelle F Spinola
Jennifer L Spurr
Lori A Squires
Nicole A St. Germain
Stephanie L St. Laurent
Marcia L Stanard
Kelly M Stanton
Andrea L Stein
Sari A Steinberg
Corrin A Stelle
Adam W. Stephens
Penny C Stetson
Jenna A Stevenson
Sarah J Stevenson
Tovah E Stevenson
Andrea J Stewart
Amanda L Stratton
Amy E Strickland
Karen L Struebing
Rebecca E Sullivan
Jennifer A Swanson
Kristen L Swanson
Erica L Tanfani
Warren J. Tassone
Melissa L Taurisano
Shelly L Tavares
Danielle L Taylor
Kerri A Taylor
Katherine V Tejeda
Matthew J Tek
Jessica L Tempest
Tara A. Teolis
Joseph G Testa
Tara L. Testa
Nicole M Tetreault
Scott R Thiboutot
Pamela J Thistlewaite

Katherine A Thomas
Jason A Thomson
Seenat Thongdee
Heather Thorburn
James M Thorpe
Kirsten N. Thurber
ChristopherP Tiberi
Steven P Tingle
Carolina M. Tofe
Amilcar A Toj
Denise R Tondreau
Michelle L Tondreau
Nicole I Tondreau
Kimberly A Torres
Valerie Y Toure
Jill A Tourigny
Denyse M M Tracey
Brandee L Trainer
Jennifer L Travers
Amos M. Traystman
Abigail A. Treglia
Susan L Tremblay
Erin J Trimble
Kevin C Trimmer
David Trinh
Marina Tsonis
Laurie A Tubman
Tara D Tudino
Felicia A Turner
Nathaniel G Turner
Kristen M Twardowski
Stephen J. Twining
Andrea S. Twiss
John R Tyler
Jennifer M Urban
Sharon A Usher
Heidi L Vacher
Kyleen J Vadenais
Eileen N Valedofsky
Marianne G Valentin
Krista M Van Dale
Natalia D Vanegas
Christian W. Vargas
Paula C. Vazao
Joanna M Vecchio
Alejandra M. Velez
Amy I. Veloz
Jennifer L. Venables
Tiffany L Ventura
Lauren Venturini
Erin R Verber
Bradford G Verdi
Debra A. Vieira
Suzanne Vieira
Rosemarie S Villegas
Daniel R Villiard
Lisa J Vinacco
Bethany A Vincent
Victoria D. Vishnevetskaya
Cheryl A Viti
Andrea R Volpi
Constance M Walinski
Amy E. Wallace
Linsey A. Wallace
Isabel M. Wallin
John Walsh
Kathleen M Walsh
Kerry J Walsh
Mark L. Walsh
Erica Waltonen
Gabrielle N. Washington
Bethany J Waterman
Tabitha J Watjen
Melissa M Weber
Tracy L Wells
Julie L Whatmough
Diane L Whipple
Brian White
Frank T Whitehead
Cameron Whitehorse
Amy L Whitfield
Robert H. Whittaker
Nara C Wierzbicki
Rebecca L Wildenhain
Angela M Williams
Brandon R Williams
James B Williams
Jeanna L Williams
James E Williamson
Emily Wilson
Susanne P Wilson
Kyong I Winkler
Scott R Winship
Kathleen E. Winslow
Erik C Wohlgenuth
Jillian Wolff
Jennifer L. Wolfinger
Joyce Ka Yu Wong
Matthew A Wood
Hollie Wozniak
Sarah P Yang
Lori C Yeardon
Brooke M Young
Pamela J Younger
Jin Zhu Yu
Esther J Zabinski
Lisa M Zagarella
Miriam Zagorski
Sharon K Zagorsky
Kerri A. Zavota

— Service Recognition Days —

In order to recognize the commitment and dedicated service of its faculty and staff, Rhode Island College established a Service Recognition Day. On this eleventh Service Recognition Day, held in December, those who have served the College for 10, 15, 20 or 25 years were recognized at a reception at the President's House.

The 30-Year Honor Roll recognizes faculty, administrative staff, and support staff who have completed 30 years of service to Rhode Island College. The Honor Roll is permanently displayed in the President's Office reception area in Roberts Hall. Honor Roll members attended a reception at the President's House.



SERVICE RECOGNITION: On Nov. 29 and 30 the College recognized faculty and staff members with 10, 15, 20, 25 and 30 years of service at receptions at the President's House. Pictured above with College President John Nazarian are those with 30 years of service. They include (seated from left) Ellen W. Hunt, Nazarian and Dr. James J. Scanlan. Standing from left are: Madeline F. Nixon, Anthony C. Delguidice, John F. DiMeo, John P. Roche, Emily Stier Adler and Kathryn M. Sasso. (What's News Photo by Gordon E. Rowley)

30 Years of Service

Faculty

Emily Stier Adler
John F. DiMeo
Richard A. Green
Madeline F. Nixon
Peter E. Piccillo
Thomas W. Ramsbey
John P. Roche
David S. Thomas

Administrative Staff

Kathryn Sasso
James J. Scanlan

Support Staff

Anthony C. Delguidice
Ellen W. Hunt

— 25 Years of Service —

Faculty

A. Anthony Antosh
Murray H. Finley
Carol A. Hryciw-Wing
Jerry E. Melaragno
Frank P. Notarianni
Jane Williams

Administrative Staff

Vincent R. Flemming
Violet R. Little
Dolores A. Passarelli

Support Staff

John P. Amore
David R. Borrelli
Lois M. Dandeneau
Michael J. Davis
Albert A. DiCarlo
Claudio D. Gomes
David L. Miller
Rosina Misuraca
Kenneth Phillips
Cecilia Pinto

— 20 Years of Service —

Faculty

Fredric C. Agatstein
Barbara A. Cowan
Dolores M. Harrison
Patricia A. McCarthy
Meradith McMunn
Audrey P. Olmsted
Judith L. Stillman

Administrative Staff

James N. Adams
Anthony J. Cipolla
Stephen D. Jacobson
Elizabeth R. Maine
Diana L. Mulberry
Ellen Weaver-Paquette

Support Staff

Lynus L. Berube, Jr.
Deborah F. Cabral Martin
George E. LaTour
George E. Murphy, Jr.
Mary A. Scavitti
Carol A. Shea
Elizabeth A. Spolidoro
James V. Yeitz

— 10 Years of Service —

Faculty

Yael Avissar
C. David Brell
Stephen N. Brown
Cathleen M. Calbert
Margaret M. Carroll
Laura F. Cooley
Patricia A. Cordeiro
Sharon M. Fennessey
David T. Filipek
Stephen E. Fisher
Ghislaine A. Geloin
Olga S. Juzyn
MacGregor Kniseley
Caroline M. Lestrangle
Pamela J. Manninen
Peter S. Meyer
Christine A. Mulcahey
Darek Niklas
June A. Nutter
Philip J. Palombo
Joanne Schneider
Marita Sheridan
Nancy S. Sullivan
John D. Sumerlin
Richard R. Weiner
Duncan A. White

Administrative Staff

Walter Jasionowski
Deborah E. Johnson,
Jayne L. Kopic
Jayne Nightingale
Susan J. Schenck

Support Staff

Michael Brady
Albert J. Campanini
Deborah J. Forte
Ernest J. Heon
Theodore J. Kacharo
Eugene R. Matera
Janice M. Neylon
Susan C. Owens
Belmira Peters
John F. Raponi
Kathleen Signoriello
Melanie D. Symonds
Carol A. Tacelli
Paul H. Tetreault
Adolfo Torcicollo
Lynn Vinacco

— 15 Years of Service —

Faculty

Mark R. Anderson
Edythe L. Anthony
Patricia A. Beezer
Pamela J. Benson
Maryann Bromley
Lenore D. Collins
John J. Gleason
Abbas A. Kazemi
Heemong Kim
Francis J. Leazes
Edward D. McDowell
Dorothy V. Petrarca
Jane E. Przybyla
Stephen P. Ramocki
David B. Sugarman

Administrative Staff

Frank J. Anzeveno
Miriam E. Aroesty O'Connell
Robert L. Conrad
Loni E. Hooper
Raymond J. Ragosta

Support Staff

Dolores M. Bresette
Susan C. Chellel
Benedito R. Dos Santos
Dunnie C. Jackson
Janice M. Kelly
Christine S. Kent
Cynthia F. McLean
Anthony Patriarca
Maureen E. Tobin



Athletics

From the athletic director's desk



Donald E. Tencher
Director,
Intercollegiate
Athletics, Intramurals
and Recreation

the competitive experiences. Here are some of the highlights of the trip:

* The gracious hospitality of Dr. Al and Mrs. DiPippo '50 who opened their home and their hearts to the team.

* The women's basketball team had a great trip to the West Coast that will surely provide them with a lifetime of memories. Competition was the reason for making the trip but some of the places and events experienced by the women will surely outlast

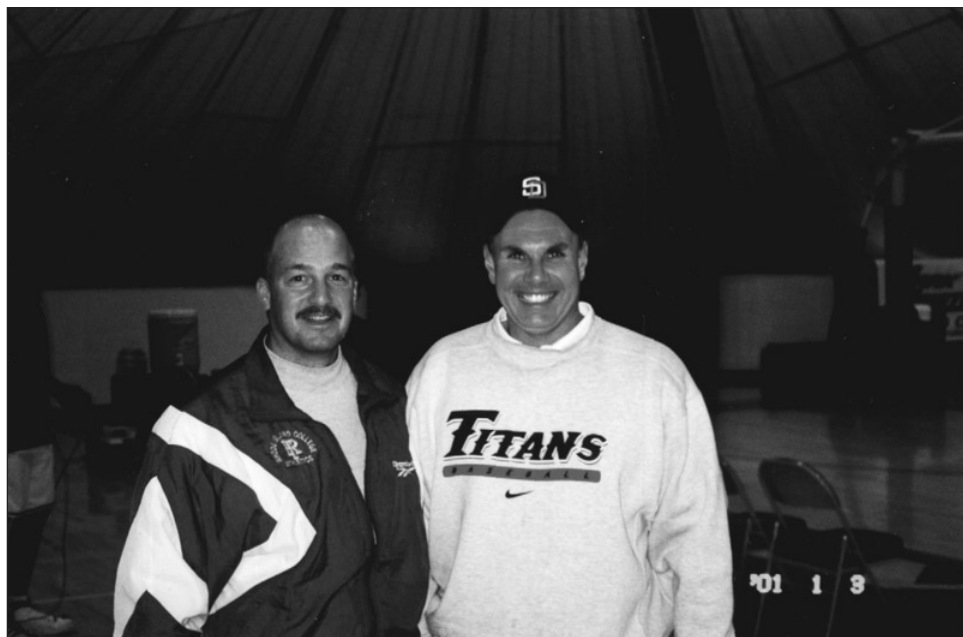
* Coach Mike Kelley conducting a practice on the outdoor courts in San Jose, with the sun rising and the temperature hovering in the high 30's.

* The team riding the cable car in San Francisco (see picture) and Coach Kelley parking the van in a garage that closed before he returned to get it out!

* Walking the Pebble Beach Golf Course. Who will ever forget when a club member asked Captain Beth Iacoi's father Jay to come



The women's basketball team in San Francisco. (l to r) Melanie Wolf, Brenda Rattray, Alicia Hersperger, Beth Iacoi, Abby Ferri, Rian Silvestrini, Monyca Vickers, Angela Sarette, Liz Shields, Head Coach Mike Kelley, Stephanie Callaghan, Pam Kelly, Erica Waltonen, and Assistant Coach Ray Tessaglia.



Assistant Women's Basketball Coach Ray Tessaglia with Mike Manzo '95 a former RIC baseball player and volunteer coach who is currently a teacher in California.

out to the 18th green and make his putt? What a thrill, but unfortunately Mr. Iacoi three putted!

* The ride down the coast from Monterey to Santa Barbara. Just unbelievable! As Coach Kelley said, "You could never explain to anybody this ride because you could never do the beauty justice." Whales, seals, the Pacific coast, and beautiful scenery.

* Great workouts at Santa Barbara City College in preparation of the Los Angeles games. It's a great facility, on the ocean and the president of Santa Barbara City College is a Rhode Island College grad, Dr. Pete MacDougall '65.

* Attending the Los Angeles Clippers vs. Charlotte Hornets game at the Staples Center. Seeing Lamar Odom, meeting former P.C. great Otis Thorpe and seeing the Rhode Island

College women's basketball team's name lit up on the Center's marquis scoreboard.

* The trip to Venice Beach and Santa Monica where life is a little different than in Providence, RI. Watching John McEnroe play paddle tennis on the beach.

* The trip to Palm Springs. Fantastic time and great hospitality at President Nazarian's home meeting some wonderful alumni.

The women reminded me throughout the trip (especially junior forward Erica Waltonen) that I have the tendency to use a certain adjective quite a bit. However, I must say that the trip — because of the wonderful people we came in contact with and the beautiful state of California — was UNBELIEVABLE!

Wrestling leads RIC winter sports charge

by Scott Gibbons
Sports Information Director

After a short break for the holidays, the winter sports season is back in full swing here at Rhode Island College. While the majority of students were enjoying some time off, almost all of RIC's six intercollegiate varsity sports went back to work right after Christmas.

The surprise of the season has been the Anchormen wrestling program. Head Coach Jay Jones' team has continued to improve and is making some noise in the New England College Conference Wrestling Association. RIC's grapplers are 7-3 overall and 3-1 in the NECCWA.

Since returning home from the Citrus Invitational (Dec. 29-31) in Ft. Lauderdale, RIC notched a fifth place finish at the Hunter College Invitational and has gone 4-2. RIC is currently riding a four-match winning streak, including a hard fought 16-15 victory over Worcester Polytechnic Institute on Jan. 16. Despite being down 12-0 after the first four matches, RIC battled back to trail 15-13 head-

ing into the final match. Senior co-captain Troy Lambert won that match 7-5 to lift RIC past the Engineers by one point.

Freshman 125 pounder Kevin Munley is 21-7 with a team high of 76 points on the season. After struggling earlier in the season, Lambert and fellow senior co-captain A.J. Aulson, have battled back to post 14-12 records. Heavyweight Chris Coburn is 9-8 and will be a threat heading down the stretch.

The men's basketball team spent the holidays in Florida for a three-game stint. RIC fell in the opening round of the Webber College Invitational to host Webber 69-68. Head Coach Dave Johnston's team took the consolation game 69-60 from Greensboro College to earn the split. Before returning home, the Anchormen dropped an 88-66 decision at Warner Southern on Jan. 5. RIC improved to 2-3 in the Little East Conference with an 80-67 win over Southern Maine on Jan. 9 and a 74-69 win over Eastern Connecticut on Jan. 19. RIC is currently 6-9 overall.

Sophomore guard Kenny Jernigan leads the team in scoring and rebounding, averaging 19.2 points and 6.7

boards per game. Senior guard Ken Payette is averaging 16.2 points and averages a team high 3.5 assists per game. Freshman Kurt Gorter, a Little East Conference Rookie of the Week for his performance in the Sunshine State, has earned a spot in the starting lineup and leads the team in blocks.

The women's basketball team is 6-9 overall and 3-4 in the Little East. Head Coach Mike Kelley's squad traveled to California for a two-game stint just after the New Year. The Anchorwomen fell to La Verne 66-48 on Jan. 3 and Claremont-Mudd-Scripps 83-51 on Jan. 4. After losing two games back home, RIC snapped a five-game losing streak with a 79-64 victory over UMASS-Dartmouth on Jan. 16.

Senior guard Beth Iacoi has been a leader on and off the court. She is averaging 12.4 points, 4.5 rebounds, 2.2 assists and 2.2 steals per game. Iacoi leads RIC in scoring and assists, as well as a .677 free throw percentage. Freshman forward Liz Shields leads the team in rebounding, averaging 7.8 boards per game, and has chipped in with 12.9 points per game.

Head Coach Nicole Follett's wom-

en's gymnastics team saw its first action in over a month with wins over Wilson College and SUNY-Brockport on Jan. 13. RIC is 4-4 overall and 2-2 in the ECAC. Sophomore Sajdah Ahmad has rejoined the team this semester and has already made an immediate impact. Ahmad, an All-American in '99-00, will compete in the all-around. Senior Alicia DeFronzo has been the squad's most consistent performer, averaging scores of 8.670 on vault, 7.317 on bars, 8.733 on beam, 9.017 on floor and 33.933 in the all-around.

The men's and women's indoor track teams resumed the season on Jan. 13 at the Tufts University Invitational. Senior Tom Conley placed first in the shot and the weight throw on the day. The Anchormen placed fifth overall with 38 points.

On the women's side, sophomore Joanne Pora placed second in both the shot and weight throw events. Sophomore Leslie Eastwood placed third in the 800 meters. The Anchorwomen placed third overall with 53 points.

With the pace picking up, it's sure to be an exciting finish to the winter sports season.

Improvisational music and dance ensemble visits RIC

Dance Company of Middlebury (DCM), an ensemble of musicians and dancers affiliated with Middlebury College in Vermont, will visit the Rhode Island College dancers on Tuesday, Jan. 30, at 5:30 p.m. in the Fannie Helen Melcer Dance Studio in the Nazarian Center for the Performing Arts.

They will teach a workshop, present short informal version of their new performance work *Riding the Wild Ephemeral*, and talk about their particular approach to improvising performance.

Comprised of seven dancers and four musicians, including two members of the popular band *viperHouse*, DCM is directed by Penny Campbell, a member of the Middlebury College dance faculty noted for her work in improvisational performance.

DCM is in the midst of a weeklong tour to colleges, prep schools and community arts centers in Massachusetts and Rhode Island.

This event is free and open to the public.

The DCM reinvents itself each year with a new artistic director, a new cast, and a new creative focus.

This tour marks the third time in 15 years that the company has configured itself as an improvisational ensemble of musicians and dancers under Campbell's direction.

Designed as a for-credit course to give serious dance students a taste of professional dance life, DCM operates much like a small dance company, developing and touring perfor-



DANCE COMPANY OF MIDDLEBURY

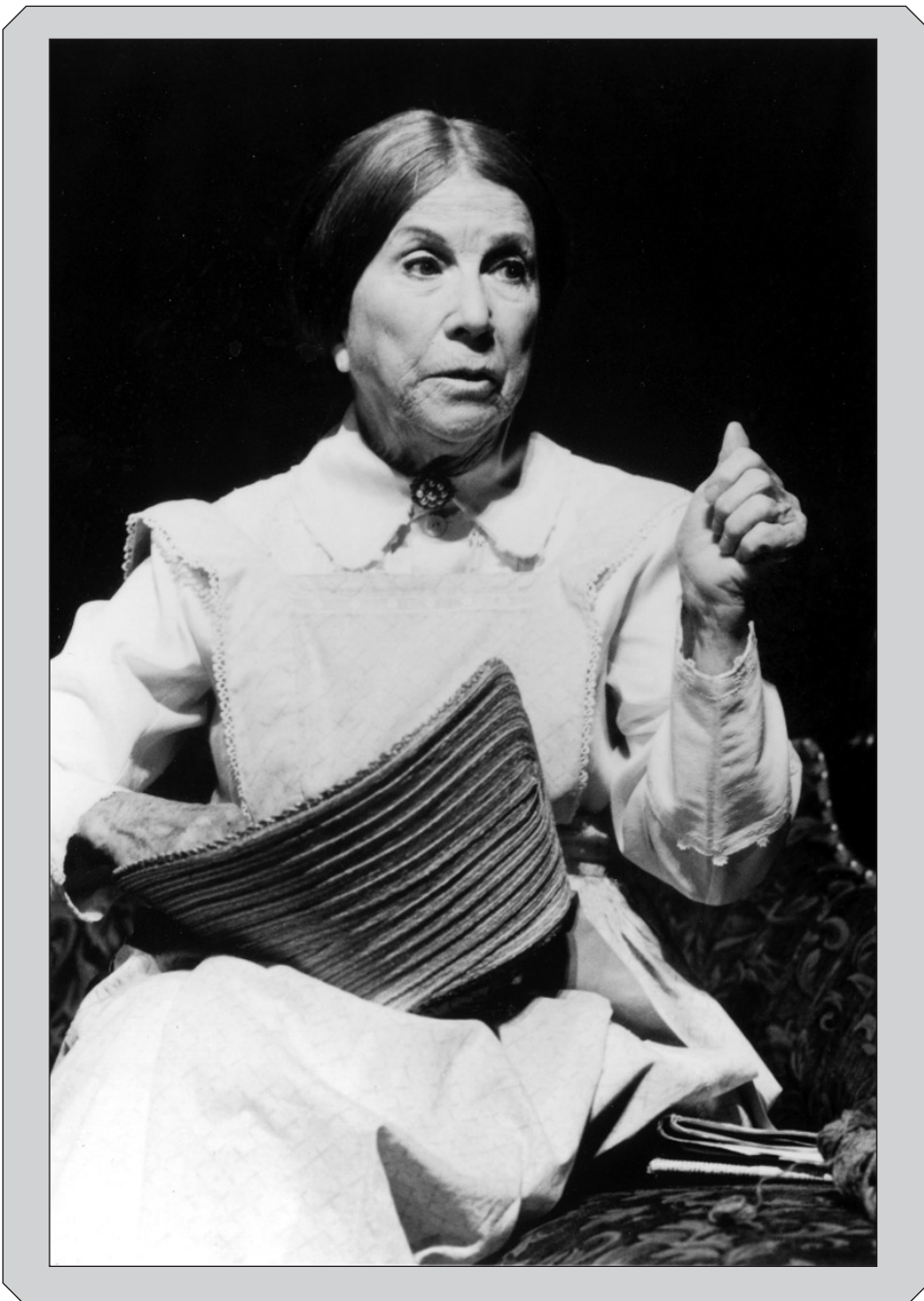
mance work.

After auditions in the fall, an intensive period of rehearsals under the direction of a faculty or guest artist

director culminates in on-campus concerts and a short tour. As varied as the company itself, DCM's tours over the last 10 years have taken the group

to Germany, the Netherlands, Italy, Los Angeles, Washington, D.C., and New York City.

Special performance



TONY AWARD-WINNING ACTRESS Julie Harris in *The Belle of Amherst* will be featured as a special performance in the Rhode Island College Performing Arts Series Wednesday, Jan. 31, at 8 p.m. in The Auditorium in Roberts Hall. Harris portrays 19th century poet Emily Dickinson as a vivacious and joyful woman who, despite being reclusive, used the language of poetry to "dwell in possibility." Tickets are \$30 with discounts for senior citizens and students. Call 401-456-8144 for more information. (Photo by Ed Krieger)

'Four Hands' piano chamber music recital is Feb. 14



PIANISTS PAUL HANSON AND JOANNE KONG

The combined playing on one instrument by pianists Paul Hanson and Joanne Kong (called "Four Hands") will be featured in the Rhode Island College Chamber Music Series Wednesday, Feb. 14, at 1 p.m. in the Lila and John Sapinsley Hall in the Nazarian Center for the Performing Arts.

The program will consist of Schubert's Overture in F Major, Opus 34; Mozart's Sonata in F Major, K. 497, and Ravel's *Ma Mere L'Oye* (Mother Goose).

The recital is free and open to the public.

With their distinguished and diverse backgrounds as solo and chamber keyboardists, pianists Hanson and Kong have been critically acclaimed

for their impeccable musicianship, mastery of tone color and exacting ensemble, according to John Pellegrino, series coordinator.

Hanson has appeared at concert venues throughout the country as a specialist in 20th century music, with repertoire including the solo piano music of Schoenberg, and works by Ives, Boulez, Stockhausen and Elliott Carter.

Kong has been recognized for her versatility as both a pianist and harpsichordist; is a noted Bach specialist, and received the Grand Prize in the 1985 International Piano Recording Competition.

For more information, call Pellegrino at 401-456-9883.

Lillian Hellman's chronicle of a greedy family, 'The Little Foxes,' is Feb. 15-17, 23-25

by George LaTour
What's News Associate Editor

Lillian Hellman's famous play of in-family in-fighting over money, *The Little Foxes*, will be staged by Rhode Island College Theatre Feb. 15-17 and 23-25 in evening and matinee performances in the Forman Theatre in the Nazarian Center for the Performing Arts.

Evening performances Thursday, Friday and Saturday, Feb. 15-17, and Friday, Saturday and Sunday, Feb. 23-25, are at 8 o'clock; the matinees Saturday, Feb. 24, and Sunday, Feb. 25, are at 2.

Andrea S. Twiss, a senior majoring in theatre performance, plays the brilliantly baleful role of Regina that in 1939 gave Tallulah Bankhead her greatest triumph, and Anne Bancroft hers in a hugely successful New York revival of the play in 1967.

The enduring strength of this play was especially remarked on when it was presented, with direction by Mike Nichols, at Lincoln Center in 1967. All the metropolitan critics and audiences joined in the opinion of Clive Barnes in the *New York Times* that, after 28 years, Miss Hellman's play had "not dated one whit."

The Little Foxes is a study in evil — a portrayal of a Southern family, the Hubbards, exultantly climbing to wealth at the turn of the century by trickily conniving against everyone who stands in their way, and finally against each other.

Their reach for riches is set off by the opportunity to enter into an arrangement with a Northern investor to build a cotton mill that will

exploit the cheap labor in a South still trying to emerge from the Civil War.

The villainous Hubbards are two brothers and a sister, who have begun to get their hands on some money and some of the power of the decaying Southern aristocracy, and hunger for more.

The sister (Regina) — the character to be portrayed by Twiss — is married to a remnant of the patrician class, and when he seems about to block her schemes, she callously concurs in his virtual murder.

One of her uncouth brothers has managed to marry a tender, sensitive woman of good family whom he has

not hesitated to drive into alcoholism.

The Hubbards stop at nothing in their ferocious determination to make money.

In addition to Twiss (Regina) as the icy den

mother of the tribe, Joshua Allen and Mark King (Oscar and Ben Hubbard) will be seen as her avaricious brothers, Barbara Bianco (Birdie) as the pathetically tiptling stranger in their midst, Todd Wojcik and Bethany Geaber (Horace and Alexandra Giddens) as the husband and the daughter of the vicious sister.

Alvin D. Meservey (Leo) will have the role of the rat-minded younger Hubbard, a chip indeed off the clan's block, Michael Roderick (William Marshall) the role of the unctuous Yankee visitor to the land of magnolias, and Sherita Delgado and Aaron Andrade (Addie and Cal) a pair of servants in the Hubbards' lair.

The play's title, first suggested to playwright Hellman by the late Dorothy Parker, is taken from a verse in the Bible's "The Song of Songs" —

"Take us the foxes, the little foxes that spoil the vines."

James L. Taylor, assistant professor and managing director of theatre, is directing this sharp revelation of how spoiling and vulpine a family can become at the scent of big money, as a sister pits brother against brother to her advantage, and drives her husband into his grave.

Christopher Abernathy is design-

ing the setting of a living room in the home of an up-and-coming family near Mobile precisely at the turn of the century and Marcia Zammarelli, costume assistant, the costumes to match.

Tickets are \$11 with discounts for senior citizens and students, and may be purchased in advance by phone using VISA or MasterCard by calling 401-456-8144.



First production as managing director of theatre for Jamie Taylor



JAMES TAYLOR

James "Jamie" Taylor of Warwick, assistant professor and managing director of theatre at Rhode Island College, will direct the RIC Theatre production of Lillian Hellman's *The Little Foxes*, his first production at RIC.

"I'm excited about being here and excited about doing this play," says Taylor. He replaces Edward A. Scheff, who retired last year as managing director of theatre after a 30-year career at RIC.

Taylor also serves as advisor to the RIC Theatre Organization.

He says he will be directing *The Little Foxes* "in a very traditional manner."

"It's a melodrama, so I'll highlight that theme with classical music," he says, adding that the RIC production "has a very strong cast."

A native of Raleigh, N.C., Taylor earned his bachelor's degree at the University of North Carolina; his master's at California State University at Los Angeles, and his doctoral degree at Florida State University.

Prior to coming to RIC last July, he served as an instructor at Florida A&M and Florida State universities, and was a lecturer at California State before that.

His areas of specialization in theatre were Shakespearean tragedies, Greek theatre, Stanislavski and August Wilson. His doctoral dissertation concerned the dramaturgy of August Wilson.

He has a wide range of acting and directing experience to his credit, and has made a number of scholastic conference presentations.

Taylor was a three-time Minority Academic Scholar at North Carolina and named a life member of Phi Kappa Phi, among other academic achievements.

His memberships in professional organizations include the American Society for Theatre Research, the Association for Theatre in Higher Education and the Black Theatre Network.

Special performance

VIOLINIST JOSHUA BELL will give a special performance in the Rhode Island College Performing Arts Series Friday, Feb. 2, at 8 p.m. in The Auditorium in Roberts Hall.

Bell appeared in the films "Music of the Heart" and "The Red Violin," the latter's resultant album capturing the Academy Award for "Best Original Score."

Tickets are \$25 with discounts for senior citizens and students.

Call 401-456-8144 for more information. (Photo by Frank W. Ockenfels)



At Bannister Gallery —

'Reflections' exhibit is Feb. 1-24

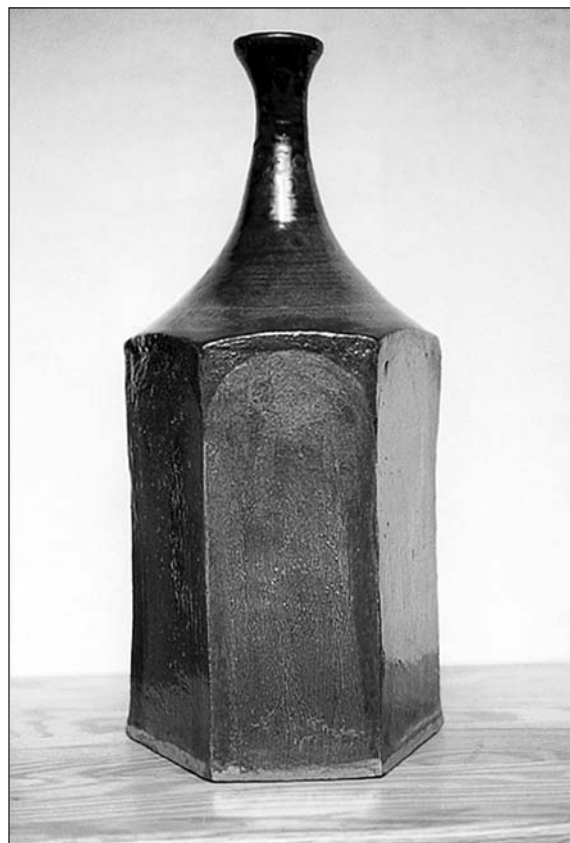
As part of the inaugural year's programming for the new Rhode Island College Nazarian Center for the Performing Arts, the planning committee has elected to honor some former faculty members of the art department, including Harriet Brisson, John DeMelim, Richard Kenyon, Curtis LaFollette, Betty Ohlin, Enrico Pinardi, Angelo Rosati and Don C. Smith.

Called "Reflections," the exhibit Feb. 1-24 in the Bannister Gallery recognizes the devotion to their art and their role in shaping a quality program in the visual arts at RIC.

The exhibit is free and open to the public.

Gallery hours are Tuesday through Saturday from noon to 5 p.m. and Thursday, Friday and Saturday evenings from 7 to 10.

For more information, call Dennis O'Malley, gallery director, at 401-456-9765.



RICHARD KENYON, "ROSSA"

RIC CALENDAR

JAN. 29 - FEB. 12, 2001

Sundays

10 p.m.—*Catholic Mass* in the Student Union Ballroom with Fr. Joe Pescatello as the celebrant.

Mondays

Noon to 1 p.m.—*Bible Study* in the Chaplains' Office, Student Union 300. Studying the Book of Revelation. Conducted by Rev. Larry Nichols, Protestant chaplain. Call 401-456-8168 for further information.

Tuesdays

6 to 8 p.m.—*SCUBA Instruction* in Recreation Center Pool. Class run from Feb. 6 through April 24. For further information, call RIC Aquatics, 401-456-8227. \$150 fee for RIC students.

Wednesdays

12:30 to 1:45 p.m.—*Christian Student Service Organization (CSSO)* meet in the Chaplains' Office, SU 300. Refreshments are provided. Students meet to discuss faith, pray, and plan service activities to benefit the surrounding community. All are welcome to attend.

12:30 to 2 p.m.—*Open Alcoholics Anonymous Meeting* in CL 105. Sponsored by the Office of Health Promotion. For more information, call Mary Olenn, 401-456-8061.

Thursdays

6 to 9:30 p.m.—*Lifeguard Training Course* in Recreation Center pool. For further information, call RIC Aquatics, 401-456-8227. Class runs from Feb. 8 through April 26.

30 Tuesday

6:30 to 8 p.m.—*Free SCUBA Experience* in Recreation Center Pool. For further information, call RIC Aquatics, 401-456-8227.

31 Wednesday

10 a.m. to 4 p.m.—*Blood Drive* in SU Ballroom. Sponsored by Health Promotions, 401-456-8061, and Professional Staff Association at RIC.

8 p.m.—Theatre: "The Belle of Amherst"*** with Julie Harris in The Auditorium in Roberts Hall. Part of the Performing Arts Series. Reserved seating \$30.

1 Thursday

Noon—Opening Reception for African-American History Month 2001: Generations and Legacy in the Unity Center, DDC #14. See calendar below.

1 to 7 p.m.—*Art Opening: "Reflections"** in Bannister Gallery. Featuring works by former faculty members of RIC Department of Art. Exhibit runs from Feb. 1 through 24.

2 Friday

8 p.m.—*Music*: Joshua Bell, violin** with Simon Mulligan, piano. In The Auditorium in Roberts Hall. Performing Arts Series Special. Reserved seating \$25.

7 Wednesday

7:30 p.m.—*Film: Fresh* in Horace Mann 193. Tickets \$1 for RIC students with proper ID, and \$2 for all others. Co-sponsored by RIC Film Society and RIC Chess Club.

11 Sunday

2 to 6 p.m.—*2nd Annual Ice Skating Party* at the Fleet Skating Rink in downtown Providence. The RIC Alumni Young Alumni Group has arranged a special skating package and reserved a heated tent. Non-skaters are welcome, skate rental is available at the rink, and helmets are required for children. Cost: Adults, \$7, children (12 and under) \$5. Price includes: four hours of skating, heated tent, and hot drinks. To purchase tickets, please contact Shana Murrell in the Alumni Office, 401-456-9625.

Performing Arts General Information: 401-456-8194

Box Office: 401-456-8144

*Admission Free

** Admission discounts for senior citizens, faculty /staff, RIC and non-RIC students.

Sports Events

		Men's Basketball	
Tues.	Jan. 30	at Amherst	7:30 p.m.
Sat.	Feb. 3	Plymouth State *	3 p.m.
Tues.	Feb. 6	at UMASS-Dartmouth *	7:30 p.m.
Sat.	Feb. 10	at Southern Maine *	3 p.m.
		Women's Basketball	
Sat.	Feb. 3	Plymouth State *	1 p.m.
Tues.	Feb. 6	at UMASS-Dartmouth *	5:30 p.m.
Sat.	Feb. 10	at Southern Maine *	1 p.m.
		Wrestling	
Sat.	Feb. 3	Tri-Match with Roger Williams and Southern Maine	6 p.m.
Tues.	Feb. 6	Tri-Match with Coast Guard and Johnson & Wales	7 p.m.
Sat.	Feb. 10	Tri-Match with Trinity and Bridgewater State	1 p.m.
		Women's Gymnastics	
Sun.	Feb. 4	at Southern Connecticut	1 p.m.
Sun.	Feb. 11	at Springfield (tri-meet with SUNY-Brockport)	1 p.m.
		Men's and Women's Indoor Track and Field	
Sat.	Feb. 3	at Little East/MASCAC Alliance Championships +	1 p.m.
Sat.	Feb. 10	at Smith Invitational	11 a.m.

Home games/meets in bold

* Little East Conference game

GENERATIONS & LEGACIES...

— Rhode Island College African American History Month 2001 —

Thursday	Feb. 1	Opening Reception	Unity Center/DDC #14	Noon
Wednesday	Feb. 7	Play: <i>Walking the Road to Freedom</i> Henry Barnard School fifth graders Written and directed by Sharon Fennessey	Student Union Ballroom	9:45 a.m.
Thursday	Feb. 8	Repeat of performance above	Student Union Ballroom	9:45 a.m.
Tuesday	Feb. 13	Video: <i>4 Little Girls</i>	Unity Center/DDC #14	10:30 a.m.
Wednesday	Feb. 14	Skits & Discussion: <i>The Colors of Love</i> Skits performed by the RIC NAACP/Unity Players	Faculty Center	12:30 p.m.
Wednesday	Feb. 14	<i>Valentine Take A Picture</i>	Donovan Dining Center	Noon-2 p.m.
Monday	Feb. 19	Gospel Music Concert	Auditorium in Roberts Hall	7:30 p.m.*
Wednesday	Feb. 21	<i>Poetry Across the African Diaspora</i> Poets from different generations and perspectives reflect on African and African American experiences.	Craig-Lee 255	4 p.m.
Wednesday	Feb. 21	Speaker: Aminata Njeri Topic: The movie <i>Bamboozled</i>	Student Union Ballroom	7 p.m.
Thursday	Feb. 22	Talent/Comedy Showcase	Student Union Ballroom	7 p.m.*
Wednesday	Feb. 28	Panel Discussion: <i>Rhode Island College Survey on Racism</i>	Student Union Ballroom	12:30 p.m.

Month Long Exhibits: Adams Library Lobby
Unity Center Reception Area/DDC #14

For further information contact The Unity Center at 401-456-8791 or jlatimer@ric.edu.
All events are open to the public. *Denotes admission charged.
Reasonable accommodations upon request. Call 401-456-8791.

Notice of Affirmative Action and Nondiscrimination

Rhode Island College is committed to equal opportunity and affirmative action. No student, employee, or applicant will be denied admission, employment, or access to programs and activities because of race, sex, religion, age, color, national origin, handicap/disability status, sexual orientation/preference, or veteran status. This College policy is in concert with state and federal nondiscrimination laws. Inquiries concerning the College's administration of the nondiscrimination laws should be addressed to the College director of affirmative action. Reasonable accommodation upon request.