

**RIC professor's
Baseball Hall
of Fame project**



**28th
Annual
Bicho
Concert**



WHAT'S NEWS @

Rhode Island College

Established in 1980 Circulation over 52,000

Vol. 26 Issue 8

April 10, 2006



RIC names 6 Alumni Award winners, 32 Honor Roll recipients

BY

**Ellie O'Neill,
Director of Alumni Affairs**

Springtime at RIC means alumni honors, and this year, dozens of RIC graduates and community leaders will be recognized for their achievements and service to the College and society. Leading the list of 2006 Alumni Award recipients is Alumnus of the Year Charles R. Wilkes '64. Also to be honored are Deborah Iannuccilli (Alumni Staff Award), Michael F. Ryan '74 (Alumni Service Award), Marybeth Peters '61 (Charles B. Willard Achievement Award), E. Pierre Morenon (Alumni Faculty Award), and Jason Anthony '99, M '05 (Young Alumni Award).

Award winners and Honor Roll inductees will be feted at the Alumni Awards Dinner on May 11 in the Donovan Dining Center.

2006 Alumnus of the Year Charles R. Wilkes '64

Criteria: Graduate of the College, continuing interest in the College and Alumni Association as represented by outstanding service, and/or by impressive financial contribution.

Since his graduation in 1964, Charles "Charlie" Wilkes has had a strong allegiance and commitment to the College. Professionally, he has had an outstanding 40-year career in education, 39 of those years at the Community College of Rhode Island as a professor of mathematics and academic coordinator for student athletes.

At RIC, he was vice president of the class, a member of Kappa Delta Phi and a student athlete participating in three sports. In his senior year, he was the recipient of the Hetherman Award, which is given to the top male scholar athlete.

A loyal and dedicated alumnus, Wilkes has maintained his relationship with the College. Active with the athletics dept., he sits on the board of directors for the Anchor Club (serving as president for eight years), and is a member of its golf committee, as well as the Hall of Fame selection committee.



JASON ANTHONY '99



E. PIERRE MORENON



CHARLES WILKES '64



DEBORAH IANNUCCILLI



MICHAEL RYAN '74



MARYBETH PETERS '61

Wilkes is also a member of the RIC Athletic Hall of Fame, the 1,000 Point Club and the 75th anniversary basketball team.

Wilkes has been recognized by the Institute of International Sport, the Words Unlimited organization, and the Rhode Island news media for his contributions to college athletics. It is only fitting that Wilkes' alma mater and the Alumni Association honor him for his commitment to the College community.

2006 Alumni Staff Award Deborah Iannuccilli Senior Accountant, Accounting Office

Criteria: Need not be a graduate of the College, but shall be employed by the College and have made a unique contribution to the College

Continued on p 12

Sweet Charity is coming to RIC



DANCE HALL BEAUTIES: Rehearsing for the April 27-30 production of *Sweet Charity* are (from left) Liz Marra, Jenna Tremblay, Kelsey Mulligan and Judy Gough. For more on the RIC Theatre musical, see page 17.

Wn Quotes...

"Her colleagues in the Negro Leagues called her the Stormy Petrel because she was always fighting for the best interests of her players and the black community."

– Robert Cvornyek, RIC professor, on Effa Manley, the first woman elected to baseball's Hall of Fame. [P 5]

"Every time you hear the same tune twice, you hear it differently. There are infinite choices in which you could harmonize a tune."

– Greg Abate, noted saxophonist and RIC faculty member, on jazz music. [P 16]

"From an academic standpoint, this is going to be great."

– Alexander Hand, RIC junior, who will be attending the University of Sydney in Australia in July on a Shinn Study Abroad scholarship. [P 17]



This regular feature of What's News looks at the links between the world and Rhode Island College. The story below was written by Gale Goodwin Gomez, chair and professor of anthropology at RIC.

This year during winter break, I was amazed to find myself face to face with prehistoric peoples from as far back as 12,000 years ago. They showed themselves to me in paintings on rock shelters amid breathtakingly beautiful vertical cliffs in the Serra da Capivara National Park, located in the interior of the drought-plagued Northeast of Brazil. The care with which these drawings were made and the fact that many of them were so well preserved made a dramatic impression on me.

The dynamic representations of human and animal figures convey details of daily life, such as childbirth, dance scenes, and hunting deer or armadillo, and universal human themes of sexuality and violence. The drawings left me wanting to know more about these people – who they were and what their lives were really like.

In fact, this is precisely what Brazilian archaeologist Niede

years ago, much earlier than previously attested anywhere in the Americas, is causing a stir among the international archaeological community. It is not surprising that the park was placed on UNESCO's list of World Heritage Sites for its cultural value to humanity.

from impoverished local hunters and loggers. Life for the local inhabitants of the Brazilian state of Piauí is very difficult, and economic prosperity has eluded these rural communities for generations.

While tourism associated with the park has the potential to help



ROCK SHOW: Above, spectacular natural rock formations abound in Brazil's Serra da Capivara National Park. At left, figures of animals (especially deer) and people are painted on rock shelter walls in hundreds of sites in the park.

There are other sites of prehistoric rock paintings scattered throughout northern Brazil, but the hundreds of sites found within the Serra da Capivara Park are especially well preserved.

The fate of these ancient images and the park itself are threatened by a lack of funding and the complex government bureaucracy as well as by intrusions

improve local economies, it would require major improvements (and substantial financial investments) in basic infrastructure and job training. The destructive forces of nature (exposure to sun, wind and rain) will inevitably continue to wipe away these ancient messages while modern humans debate their meaning and value.

I was fortunate to have the chance to go back briefly in time and witness some remnants of human culture that still seemed surprisingly familiar even after thousands of years.



Guidon and her team are trying to piece together (literally). Their recent claim of evidence of human presence in the park from 35,000

years ago, much earlier than previously attested anywhere in the Americas, is causing a stir among the international archaeological community. It is not surprising that the park was placed on UNESCO's list of World Heritage Sites for its cultural value to humanity.

Welfare-to-Work topic of CPP Spring Lecture

Alexander Bryson, principal research fellow at the University of Westminster in London, UK, will explore the question, "Just How Successful are Welfare-to-Work Programs?" in an upcoming Center for Public Policy lecture presentation.

Bryson, who is also a 2005-06 Wertheim Scholar at Harvard University Law School, will appear April 11 at 3 p.m. in Alger Hall Auditorium (Room 110).

His talk is the fifth and final of this year's Spring Lecture Series, which addresses the dynamics of

both historical and current policy problems and their resolution or continuing challenges.

For more information, contact Mark Motte, director of the Center for Public Policy, at 401-456-8378 or mmotte@ric.edu.

What's News at Rhode Island College

Editor: Jane E. Fusco

Managing Editor: Rob Martin

Information Aide:
Pauline McCartney

Photographers:

Gordon E. Rowley '64
Lance Gorton '09

Design Manager: Cynthia Page M '93

Graphic Designer: Paul J. Silva '03

Staff Writers:

Lauren M. Mesale '06
Alison Strandberg
Christopher Farrell '07
Ericka Atwell '08

What's News at Rhode Island College (USPS 681-650) is published by:

Rhode Island College
Office of News and Public Relations
600 Mt. Pleasant Ave.
Providence, RI 02908

It is published monthly from September to June. Periodicals postage paid at Providence, RI.

Printing: TCI Press, Seekonk, Mass.

POSTMASTER:

Send address changes to:

What's News at Rhode Island College

Office of News and Public Relations, 600 Mt. Pleasant Ave., Providence, RI 02908

Deadline:

Deadline for submission of copy and photos is noon the Thursday two weeks before publication date.

Telephone: 401-456-8090

Fax: 401-456-8887



The next issue of
What's News
will be May 8, 2006.

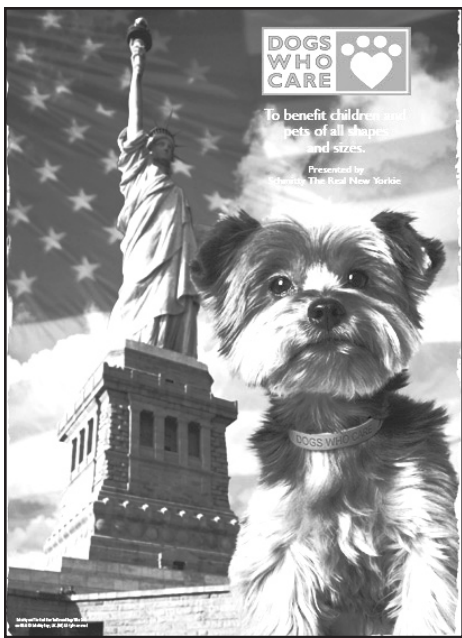
Story ideas are welcome.
Call 401-456-8090
or email rmartin@ric.edu.

RIC alumna—and dog—helping pets in need

Elly McGuire '76, of New York, and her five-year-old Yorkshire terrier Schmittty, are working to help America's four-legged friends in need.

In an effort to raise funds and awareness for pets who were displaced during the 2005 hurricane season, McGuire, also Schmittty's "spokesperson," has created a trademark blue Dogs Who Care collar inspired by Lance Armstrong's yellow Livestrong wristband.

"Dogs Who Care is all about the little guy helping the little guy. The money goes straight to the shelters," said McGuire. "We knew we had to take action to do something after the hurricane disasters – especially after



(Schmittty the Real New Yorkie and her "mom" Elly McGuire '76 (above), raise funds for pets displaced during the 2005 hurricane season through the Dogs Who Care campaign. At left is an advertisement for Dogs Who Care featuring Schmittty. At right is McGuire's Dogs Who Care collar.



sociation, since Hurricane Katrina struck, more than 8,000 dogs, cats, horses, and other animals have been rescued in Louisiana, Mississippi and Alabama. Of these, more than 1,000 have been reunited with their owners. More than 200 animal shelters in the U.S. and assorted rescue groups have taken Katrina survivors into their care.

These shelters need funding for food, medical supplies and housing. That's where McGuire's Dogs Who Care campaign comes in.

Currently, there are over 73 million dogs in the U.S.

"If all their guardians bought a Dogs Who Care collar – wow! Just think what we could do," McGuire

said.

McGuire and her pet (whose full name is the trademark Schmittty The Real New Yorkie) have been involved in philanthropy before. Through a line of New Yorkie greeting cards, McGuire raised money for the Uniformed Firefighters Association Scholarship Fund in response to the September 11 attacks. In addition, the Bark the Vote campaign, featuring Schmittty in a window at the Barnes & Noble bookstore on 5th Avenue in Rockefeller Center in New York City, helped to encourage pet owners to go to the polls.

Dogs Who Care collars are made from rubberized silicone and have a patented, quick-release design that allows them to fit almost any size dog.

The collars can be purchased for five dollars at www.dogswhocare.com. One hundred percent of the profits will be donated to animal shelters around the country. With the purchase of a Dogs Who Care collar, consumers also receive a mini-poster featuring Schmittty in front of the Statue of Liberty.

Schmittty The Real New Yorkie was featured on NY1, New York's popular 24-hour news channel, as "New Yorker of the Week." Schmittty was recognized for charitable work with the Dogs Who Care collars. NY1 aired the segment in early March.

For more information on Schmittty the Real New Yorkie and Dogs Who Care, visit www.schmitttysays.com and www.dogswhocare.com.

seeing so many homeless pets."

The ASPCA (American Society for the Prevention of Cruelty to Animals) endorses the Dogs Who Care effort. According to the as-

President of Sudanese Studies Association discusses Darfur conflict

BY **Lauren Mesale '06**
Staff Writer

Before the 2004 Indian Ocean tsunami, the United Nations called the Darfur conflict the world's worst current humanitarian crisis.

On Feb. 22, Ali B. Ali-Dinar, president of the Sudan Studies Association (SSA), outreach director in the African studies program at the University of Pennsylvania, and grandson of the last ruling sultan of Darfur, gave a presentation entitled "Contemporary Humanitarian Crisis" to members of the Rhode Island College community. He spoke during the conference "Foreground and Future, Aiming to Conflict Resolution." Presentations by four experts offered various analyses of the current conflict in Darfur.

The struggle in Darfur (a region in western Sudan) is mainly between the Janjaweed (a government-supported militia of Arab tribes) and the non-Arab peoples of the region. As Ali-Dinar explained, it is not solely an Arab vs. African battle, although both sides feel that their way of life is being threatened. The conflict stems from an ongoing, country-wide political crisis.

The World Health Organization has estimated that 50,000 deaths occurred in Darfur since the conflict began about three years

ago. The number one cause of death was (and still is) starvation. An estimated 51 percent of Darfur's population (3.4 million people), have been affected.

The conflict in Darfur is characterized by violence, including systematic killings, theft of cattle herds, and the destruction of homes. Fearing further violence, refugees, many of whom are farmers, have flooded into urban areas and temporary camps.

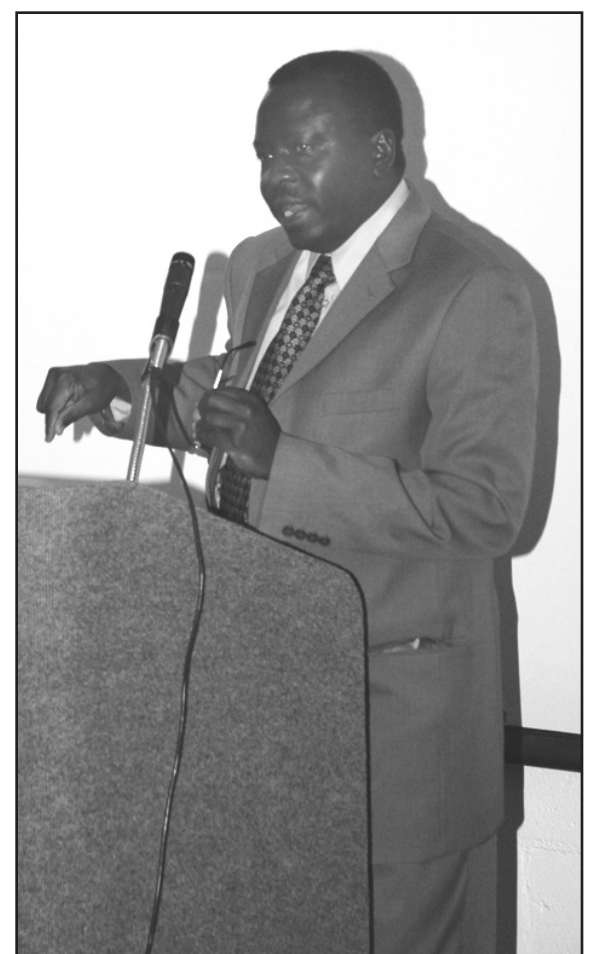
"We must ask ourselves 'why would a government wage war against its own civilians?'" said Ali-Dinar.

According to Ali-Dinar, Darfur has always been strife-ridden. A 1989 military coup resulted in the overthrow of the government of Sudan and the ousting of its democratically elected prime minister. The current conflict has become the longest civil war in Africa's history.

Many Americans view the Darfur situation as something that is distant, having little consequence in their lives. But for Ali-Dinar, his homeland's crisis is, as he said in closing, "a very sad reality."

According to Richard Lobban, professor of anthropology at RIC, and executive director of the SSA, the aim of the Darfur conference was to inform the RIC community and general public of the issues surrounding the Darfur conflict, and to think about it in terms of national and foreign policy.

Although there is not a specific group focus-



ALI B. ALI-DINAR

ing on Sudan at the College, the SSA, established in Rhode Island in 1981, provides information on, and promotes Sudanese studies and scholarship. This August, the association celebrates its 25th anniversary with a three-day event at RIC.

NEWS FROM THE Foundation and Alumni Offices



**BY
Peg Brown
Vice President,
Development
and College
Relations**

The Annual Alumni Awards Dinner, scheduled this year for May 11, brings together Rhode Island College alumni from across the nation (and sometimes from around the world), whose careers and lives represent achievements across an astounding breadth of disciplines. Every year, each honoree invariably pays tribute to a faculty or staff member – sometimes more than one – who made a difference and changed life’s path for that person.

I am reminded every year as I read the comments of each honoree that faculty and staff members don’t always hear these words of thanks and tribute, nor do they always know how far-reaching their influence might be. This is just one of those stories about a special teacher and his student.

The year was 1935, and with the landing of a man on the moon more than three decades

away, the moon might as well have been made of green cheese! Mary C. Rogers, Class of 1939, now professor emerita, Eastern Connecticut State University (ECSU), met the professor that changed her life. She remembers those early days at RICE this way:

“We had very little science. A semester of biology was required, and another was available as an elective. Enter Professor Joseph R. Lunt. Professor Lunt was almost our only source of information in the physical sciences. I have to write ‘almost’ because we had Robert Marshall Brown whose notes from two semesters of ge-

ences with Home Equipment, Science Experiences with 5 and 10 cent Store Equipment, and Science Experiences with Inexpensive Equipment. When I received my first teaching appointment (6th grade in Newport), I began doing some of the ‘Lunt’ procedures for my students. Yet, I felt keenly the lack of more understanding of the physical science concepts that were required for full explanations.



JOSEPH LUNT

“This need to fill the gap in my physical science background became greater after I was asked to join a group of four teachers – all RICE graduates – who would initiate, in 1942, a science course for all Newport students in grades 7 and 8.”

Thus began Mary’s journey into the world of physical sciences. Courses in physics, chemistry, geology, and astronomy followed at various institutions, including the University of Wisconsin. Fellowships from NSF, General Electric, Westinghouse, the State of Rhode Island and NATO provided additional opportunities. In 1951 Mary added a master’s from RICE to her growing credentials.

Mary has seen the focus on science education go through many stages in her career – and the need has never waned.

“The need for science education hasn’t changed,” she writes. “Students must acquire the necessary knowledge background so that they can teach science effectively. Methods are important, but if I myself cannot read, how can I teach others to read? If I cannot speak French, how can I teach others? Why do people accept those ideas, and yet think that somehow science can be taught from a vacuum?”

Mary herself says, “My crusade for science education continues.” She has been watching her alma mater closely, and most recently wrote to me about our remodeled physics lab. The article in the December issue of *What’s News*, entitled “Remodeled physics lab brings science to life,” prompted Mary to write, “That’s the kind of science that (Professor Lunt) taught!”

In 2002 Mary C. Rogers established an endowed scholarship in her name to support science education for elementary school teachers. In 2004, on the heels of her 65th class reunion, she asked us to rename the scholarship in honor of Professor Joseph R. Lunt. Mary feels there are many alumni and friends out there who have benefited from Professor Lunt’s vision, teaching, and commitment to science education.

Mary asks all of us to consider making a gift to the Lunt Endowed Scholarship Fund, and join in her crusade. How many generations have benefited from ‘Lunt’ methods? How many more can benefit from your gift?



MARY ROGERS

“Until my retirement, I ran the Wickware Planetarium at Eastern Connecticut State. I have heard a teacher emerging with her elementary students from one of our presentations, saying ‘Thank you. I learned so much.’ She should not have learned anything from our program. Her students should have learned, but she herself should have known all the grade school astronomy that we presented. That illustrates an objective of this scholarship – teachers, already well informed, should learn little if anything when they take their classes out on a science field trip.” – Mary C. Rogers

Mary C. Rogers taught at ECSU from 1963 to 1989, earning the rank of professor of physical science and assuming the directorship of the Wickware Planetarium. In retirement, she continues her commitment to lifelong education and to her crusade for science education.

Contributions may be made to the Joseph R. Lunt Endowed Scholarship at the Rhode Island College Foundation, 600 Mt. Pleasant Avenue, Providence, RI 02908. It is Mary’s hope that we can grow this scholarship. Three scholarship awards have been made from this fund and, with your assistance, and Mary’s continued support, we can continue to grow the Lunt Legacy.

ography I later found extremely useful in teaching meteorology.

“Professor Lunt offered a course that featured demonstrations in science for the elementary teacher. I later bought the books he suggested. The titles were something like, *Science Experi-*

The Rhode Island College Foundation & Alumni Association present

Trends and Updates You Need To Know: Estate and Tax Planning Tips Workshop



Workshop conducted by
David G. Prentiss, Esq.
Adjunct Professor
School of Management

Wednesday, April 26, 2006
Alger Hall, Class 110
Light Buffet 5:30 p.m.
Workshop 6:15 to 7:45 p.m.



David G. Prentiss is currently teaching Accounting 554 ~ Estate Planning in the Masters of Accountancy Program at Rhode Island College.

Name(s) _____ Class Year _____

Address _____

City _____ State _____ Zip _____

Home phone _____ Email _____

Please respond by April 21. Space is limited.

____ Yes, I/we will attend the workshop.

You may also email alumni@ric.edu or call:
401-456-8827 to reserve

*Once on Campus, please look for the
Estate Planning Workshop signs.



Clip & Send to:
Development Office
East Campus, Kauffman Center
600 Mt. Pleasant Avenue
Providence, RI 02908-1991

Call 401-456-8827 for further information. Please note that there is no fee.

RIC professor delivers book and research projects for Baseball Hall of Fame

BY
Rob Martin
Managing Editor

When the late Effa Manley became the first woman elected to baseball's Hall of Fame in February, RIC educator Robert Cvornyek was well aware of her significance to the sport – he had just written the introduction to her soon-to-be-reissued book on Negro League baseball.

Negro Baseball...Before Integration, a 1976 book by Manley and sportswriter Leon Herbert Hardwick, will be available in June after being out of print for many years. Along with the new introduction, *Negro Baseball* features additional



ROBERT CVORNYEK

notes and commentary.

Manley was one of 17 people from the Negro Leagues and pre-Negro Leagues chosen for membership in baseball's shrine this year. As part of the effort to honor these long-overlooked athletes, Cvornyek, a professor of history and coordinator of the College's Labor Studies Program, will deliver a presentation on the history of black baseball during a June conference at the Hall of Fame in Cooperstown. He will also attend the Hall of Fame induction ceremony on July 30.

Cvornyek is a native of New Jersey who has been at RIC for 16 years. His parents, particularly his mother, were fans of the New York Yankees' former minor league team, the Newark Bears, who shared a stadium with the Manley's Negro League team, the Newark Eagles.

Cvornyek learned about Manley's extraordinary life while he cared for his ailing father in New Jersey six years ago. Unfortunately, his father passed away, but it was during the time he spent back in New Jersey that Cvornyek visited the Newark Public Library, home to an extensive collection of Manley's personal papers.

Cvornyek's involvement with the Hall of Fame and Manley project began about a year ago when he was invited to join the Out of the Shadows Writers Group, a research team sponsored by the Hall of Fame and funded by Major League Baseball. The group was formed for the "recognition of ballplayers who have been somewhat lost to history," said Cvornyek.

After writing an essay for the group on the relationship between the black press and Negro League baseball, he began work on the

Manley book. This was at the request of Larry Hogan, the chairman of the committee that voted on the black players for the Hall of Fame and the head of Out of the Shadows.

Manley was undoubtedly one of the central figures of Negro League baseball. She still remains, moreover, "the most influential woman in professional baseball's front office," according to Cvornyek.

She was raised in Philadelphia and met Abe Manley, a real estate investor at the 1932 World Series at Yankee Stadium. They were married in 1935, and Effa began managing the business operations of Abe's first baseball club, the Brooklyn Eagles Negro League team. After a year, the Manleys moved the team to Newark where over the next 13 years it became one of the most successful franchises in Negro League history.

Effa Manley ensured that players dressed and traveled in style. She also made sure all her players were paid promptly on the first and 15th of the month.

"Her colleagues in the Negro Leagues called her the Stormy Petrel because she was always fighting for the best interests of her players and the black community," said Cvornyek.

In his introduction to *Negro Baseball*, Cvornyek wrote: *Under Effa's care, the Eagles became a major source of racial pride and cultural expression for Newark's black residents...Her professionalism, keen intellect, glamour, and strong-willed determination challenged the 'old boys club' that traditionally ran black baseball.*

Once baseball's integration experiment succeeded, Branch Rickey, general manager of the Dodgers and the man who signed Major League Baseball's first black, Jackie Robinson, was soon joined by other major league officials in raiding the Negro Leagues for talent. Manley herself lost top stars such as Don Newcombe and future Hall-of-Famers Monte Irvin and Larry Doby to big league owners – and for little or no monetary compensation.

Manley, who was white, was a strong civil rights advocate. In the 1930s she fought to desegregate Harlem's retail shops and department stores along 125th Street. At the ballpark, she held Anti-Lynching Day, and after blacks integrat-



EFFA MANLEY (Photo courtesy of Larry Hogan)

ed the Major Leagues in 1947, she worked on behalf of black owners and players for fair treatment by the big leagues.

After her ownership of the Newark Eagles ended in 1948, she continued to fight for the recognition of the Negro Leagues. When her husband died in 1953, she moved to Los Angeles where she and sportswriter Hardwick wrote *Negro Baseball...Before Integration* to explain the cultural and economic importance of the black

game.

The book, said Cvornyek, provides an alternative take on the consequences of baseball's integration: the cost exacted on the black community in terms of cultural identity and economic self-determination.

Wrote Cvornyek:

When blackball finally ended, Manley reported that she "watched the burial of Negro League baseball with highly mixed emotions. On one hand, I could recognize the tremendous racial advancement that had occurred with the tumbling of the big leagues' color barrier. Yet, on the other hand, Negro Baseball – in its more than half a century of existence – played a vital role in the colorful history of a vibrant ethnic group made all the richer because of it."

Manley died in 1981 at age 84.

In his studies of black baseball, Cvornyek has gathered some fascinating grains of trivia. He discovered a Rhode Island connection to one of the players on this

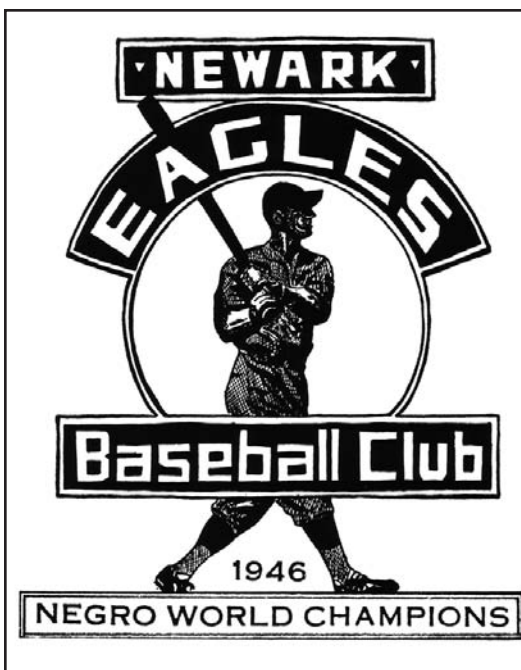
year's Hall of Fame ballot, Oliver "Ghost" Marcelle, a third basemen who played in the early 1930s for the Providence Colored Giants. The team was owned by numbers runner "Daddy" Black, a beloved figure noted for his generosity during the early years of the depression, who was later murdered gangland style on Cranston Street in Providence. Marcelle, alas, was not elected to the Hall this time around.

Cvornyek also had the chance to interview Hall of Famer and master of the non sequitur, Yogi Berra. The former Yankee star and manager, who played in Newark during the 1940s, said of Manley's Newark Eagles, "I never saw them. They played in the same stadium." Cvornyek understood this Yogiism clearly: When the black team was playing out of town, the white team, including Berra, played in Newark, and vice versa.

Currently, Cvornyek is working on a historical review of all existing literature on black baseball. He is also researching blackball in Rhode Island. He pointed out the existence of an 1886 team called the Providence Black Grays, and of local Emancipation Day celebrations in the 1930s and 40s. Emancipation Day drew 10,000 people to events that included a Rhode Island Little World Series that featured the two top black teams in the state, said Cvornyek.

With the re-release of *Negro Baseball* and the upcoming Hall of Fame inductions, Cvornyek hopes a new generation of baseball fans, scholars, and historians will explore the glory days of black baseball.

And thanks to the Hall of Fame and Cvornyek, Effa Manley will be among the most closely studied, and deservedly so. She was a pioneer – in the Negro Leagues, in the struggle for civil rights and now, in history, as the first woman to reside in the Hall of Fame.



RIC Athletic News



FROM THE ATHLETIC DIRECTOR’S DESK



Donald E. Tencher
Director of Athletics

- Congratulations to RIC Athletic Hall of Famer Charlie Wilkes ’64 on his selection as a 2006 Alumni Award Winner. It is well deserved!
- I want to extend my deepest sympathy to the family of the late RIC alumna Alice Bailey ’32. She lived an incredibly energized and fulfilling life and her RIC family will miss her presence.
- The softball team is off to another strong start with a solid performance at the Rebel

- Games in Florida. The squad picked up two solid wins over perennial power Wheaton, which was ranked 12th in the nation.
- The baseball team has been struggling a bit, but has the talent to make another run at the Little East Conference title. The Anchormen are young and are sure to improve as the season progresses.
 - Junior center Caitlin Gavin continues to be one of the finest lacrosse players in the nation. She is a one-person scoring machine who has helped lead the Anchorwomen to two victories so far in 2006.
 - Men’s tennis, men’s golf and the outdoor track team are all just starting their seasons and we wish them the best.

- We celebrated National Student Athlete Day last week. I want to congratulate all of our 340 student athletes and thank them for all their efforts in representing RIC.
- I was fortunate to attend the 68th Annual Men’s Basketball Final Four last week where I spent some time with Mike Gibson, son of RIC Athletic Hall of Famer Larry Gibson ’75. Mike is working with Michigan State head men’s basketball coach Tom Izzo and is sure to be a successful coach in the future.
- Thanks to all the alumni I met with during our recent gatherings in Orlando and New York. It was indeed a great pleasure.
- Congratulations to women’s tennis coach Kelly Lange Chartier ’98 and her husband on the birth of their first child, a son, Travis.

Sports auction slated for April 27



It’s hard to believe, but it’s been a decade since our first Sports and Celebrity Memorabilia Auction. The 10th Annual Rhode Island College Sports and Celebrity Memorabilia Auction will be held on Thursday, April 27 at the Radisson at the Airport

Hotel in Warwick. There will be hundreds of autographed items from the world of sports and Hollywood, to go along with some great trips to sporting events, golf days and dinners at restaurants around the state. Call the RIC athletic dept. at 401-456-8007 for more information. Don’t miss this great event!

SPORTS Events April 10 - MAY 8

Baseball				Men’s Tennis			
Tues.	April 11	at UMass Dartmouth *	3:30 p.m.	Tues.	April 11	Western Connecticut *	4 p.m.
Wed.	April 12	Roger Williams	3:30 p.m.	Sat.	April 15	at Southern Maine *	1 p.m.
Sat.	April 15	at UMass Boston * (DH)	Noon	Tues.	April 18	Johnson & Wales	4 p.m.
Tues.	April 18	at Elms	7 p.m.	Thurs.	April 20	UMass Dartmouth *	3:30 p.m.
Wed.	April 19	Curry	3:30 p.m.	Sat.	April 22	UMass Boston *	1 p.m.
Thurs.	April 20	Clark	3:30 p.m.	Wed.	April 26	Newbury	4 p.m.
Sat.	April 22	Western Connecticut * (DH)	Noon	Fri.	May 5	Little East Championships ^	TBA
Tues.	April 25	Wheaton	3:30 p.m.	Sat.	May 6	Little East Championships ^	TBA
Wed.	April 26	at Worcester State	4 p.m.	Men’s & Women’s Outdoor Track & Field			
Thurs.	April 27	Framingham State	3:30 p.m.	Sat.	April 15	at Solomon Husky Invitational !	10 a.m.
Sat.	April 29	at Eastern Connecticut * (DH)	1:30 p.m.	Sat.	April 22	at Silfen Invitational #	10 a.m.
Tues.	May 2	Johnson & Wales	3:30 p.m.	Sat.	April 29	at Alliance Championships @	10 a.m.
Wed.	May 3	at Babson	3:30 p.m.	Fri.	May 5	at New England Div. III Championships \$	10 a.m.
Sat.	May 6	Plymouth State * (DH)	Noon	Sat.	May 6	at New England Div. III Championships \$	10 a.m.
Wed.-Sun.	May 10-14	Little East Tournament	TBA	Fri.	May 12	at N. E. Open Championships +	10 a.m.
Softball				Sat.	May 13	at N. E. Open Championships +	10 a.m.
Tues.	April 11	Coast Guard (DH)	3:30 p.m.	Thurs.	May 18	at ECAC Division III Championships \$	10 a.m.
Thurs.	April 13	at Salve Regina (DH)	4 p.m.	Fri.	May 19	at ECAC Division III Championships \$	10 a.m.
Sat.	April 15	UMass Boston * (DH)	1 p.m.	Sat.	April 8	at Bryant College Invitational	10 a.m.
Tues.	April 18	at UMass Dartmouth * (DH)	3 p.m.	Men’s Golf			
Thurs.	April 20	Westfield State (DH)	3:30 p.m.	Thurs.	April 13	Mass. College of Liberal Arts & Wesleyan	Noon
Sat.	April 22	at Plymouth State * (DH)	1 p.m.	Wed.	April 19	at Newbury	Noon
Tues.	April 25	Western Connecticut * (DH)	3:30 p.m.	Fri.	April 21	at Johnson & Wales	Noon
Thurs.	April 27	Worcester State (DH)	3:30 p.m.	Fri.	April 28	at Elms Invitational	11 a.m.
Sat.	April 29	at Eastern Connecticut * (DH)	1 p.m.	<p>* Little East Conference game ^ hosted by UMass Dartmouth ! hosted by Northeastern University # hosted by Connecticut College @ hosted by University of Massachusetts Dartmouth \$ hosted by Springfield College</p>			
Thurs.-Sun.	May 4-7	Little East Tournament	TBA	Log on to www.ric.edu/athletics for updated schedules and results.			
Women’s Lacrosse							
Tues.	April 11	Worcester State	4 p.m.				
Thurs.	April 13	Southern Maine *	4 p.m.				
Sat.	April 15	Plymouth State *	1 p.m.				
Thurs.	April 20	at Lasell	4 p.m.				
Sat.	April 22	at Western Connecticut *	Noon				
Sat.	April 29	at Eastern Connecticut *	11:30 a.m.				
Tues.	May 2	LEC Tournament Quarter-Finals	TBA				
Fri.	May 5	LEC Tournament Semi-Finals	TBA				
Sat.	May 6	LEC Tournament Finals	TBA				

Hetherman and Murphy Award recipients announced

BY
Scott Gibbons,
Sports Information Director

Senior Justin Deveau has been chosen to receive the 2006 John E. Hetherman Award and senior Katie Benevides will receive the 2006 Helen M. Murphy Award at the College's annual Cap and Gown Day on Wednesday, May 3 at 12:15 p.m.

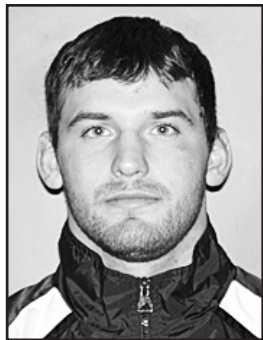
The awards are based not only on athletic prowess, but also value community and campus involvement.

The Hetherman Award was established in 1958 and sponsored by the RIC class of 1940 to honor its classmate, Jay Hetherman. Hetherman, while a student, played varsity basketball and baseball for two years. He was also active in the drama club and took part in all "stunt night" activities and major productions. During World War II,

Hetherman became a naval aviator, receiving his wings in Jacksonville, Fla., in 1942. Approximately one year later, while returning from flying a rescue mission in the South Pacific, Lt. John E. Hetherman crashed and lost his life, leaving an enviable college and service career behind him.

A Hetherman Award recipient must be a male student-athlete who participates in intercollegiate athletics, is a good student and has demonstrated interest and participation in campus activities.

Deveau, who hails from North Attleboro, Mass., closed out his



JUSTIN DEVEAU

wrestling career in 2005 with an overall record of 135-33 with 571 points, including 191 take-downs, 41 reversals, 136 escapes,

57 near-falls and 29 pins. Deveau attained All-New England status in each of his four years at RIC.

As a senior, he placed second at 197 lbs. at the New England College Conference Wrestling



KATIE BENEVIDES

Association (NECCWA) Championships, third at 285 lbs. at the RWU Invitational and second at the Citrus Invitational. As a junior, Deveau was selected as one of two New England wild cards to compete at the NCAA Div. III Championships. Deveau went 1-2 at the NCAA Championships, with each of his losses to eventual All-Americans. As a sophomore and freshman, Deveau placed second at 197 lbs. at the NECCWA Championships.

The Murphy Award was established in 1979 and sponsored by the faculty of the Henry Barnard School to honor an outstanding Rhode Island College senior woman athlete. The award is named for Helen M. Murphy, a 1939 RIC graduate who was a member of the faculty for 38 years, teaching at Henry Barnard School.

Benevides is a four-year letter winner in both women's soccer and softball. During her soccer career as a back, she played in 75 games, starting 70 of them. She closed out her career with two goals and one assist for five career points.

She is currently the starting left fielder and a team captain on RIC's softball team. Benevides has played in 14 games, starting all of them, and is batting .435 with 13 runs scored, five RBI and two doubles. She was a member of RIC's Little East Conference Regular Season Championship and Eastern College Athletic Conference (ECAC) Tournament Championship teams as a junior in 2005.

Anchor Club Golf Day July 17

Summer is right around the corner so pencil in Monday, July 17 for the Sixth Annual Anchor Club Golf Day at Pawtucket Country Club. To register a foursome or for sponsorship opportunities, please call Assistant Athletic Director Mike Morrison at 401-456-8260.

Gridiron Club to fete Nazarian

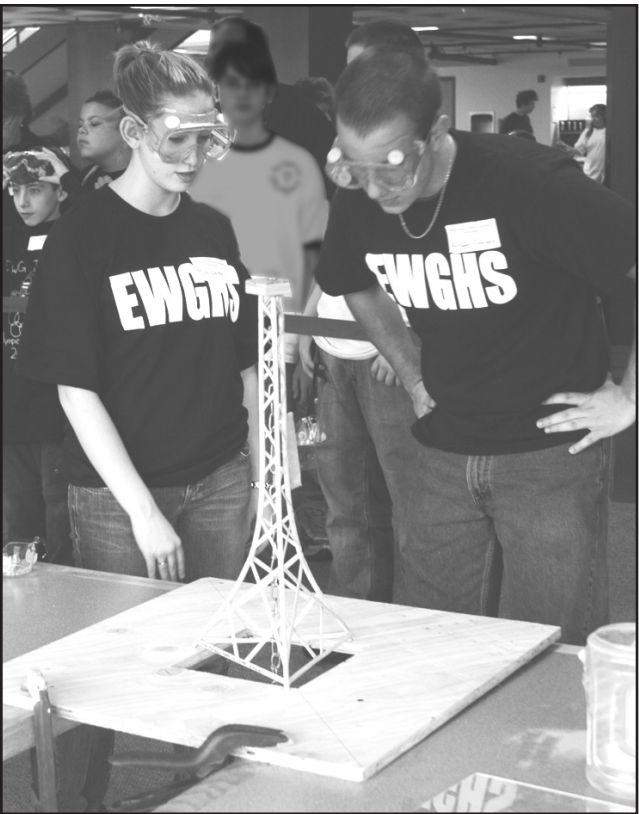
The Providence Gridiron Club will honor Rhode Island College President John Nazarian at a banquet on Wednesday, May 10.

Please call the RIC athletic dept. at 401-456-8007 for ticket information.

READERS' THEATRE: RIC staff members Patricia Nolin '84 M '87 (left) and Kathryn Sasso '69 rehearse a Readers' Theatre performance of *The Good Times are Killing Me* by Lynda Barry. The production, based on the book that was the focus of "Open Books-Open Minds" project, was staged March 30 in Sapinsley Hall in the Nazarian Center. It was directed by Elaine Perry, associate professor emerita of theatre.



BIG BOOK: Rhode Island Geography Bee winner Laura J. Kulm, an eighth grader at Archie R. Cole Middle School in East Greenwich, receives a large world atlas from bee moderator Prof. Mark Motte March 31 in Gaige Hall Auditorium. The atlas was one of several prizes Laura received including a trip to Washington, D.C., to compete in the National Geography Bee.



STRENGTH TESTING: Michi Walker and Anthony Ciringione of Exeter West Greenwich High School test the strength of the wooden tower they built for the Rhode Island Science Olympiad held April 1 in the Donovan Dining Center.



COMPETING FOR GEEKINESS: Contestants in the Miss Physical Science Pageant strut their stuff on stage in the Student Union Ballroom March 23. From left are Jess White, Summer Sweet, Laura Steere, Sabrina Mountford, Heidi Cournoyer and Jill Donovan. Although contestants were judged on "brains, beauty and (science) brawn," it was all a spoof on beauty pageants to raise money in support of promoting the study of science among school-age girls.

Looking Back...

Here at What's News, we will feature historical photos from the College's past. Please go to your scrapbooks and send us photos with as much information as possible. All photos will be handled carefully and returned to sender. Send to: Rhode Island College, Office of News and Public Relations, Kauffman Center, Providence, RI 02908.



INSPIRED by our Jan. 23 issue photo of "future Rockettes" from the Class of '57, Pauline Ucci Dyson '59 sent us this photo from the fall of 1955 of students on the steps of the Rhode Island College of Education building in Providence – now the site of the Providence Place Mall.



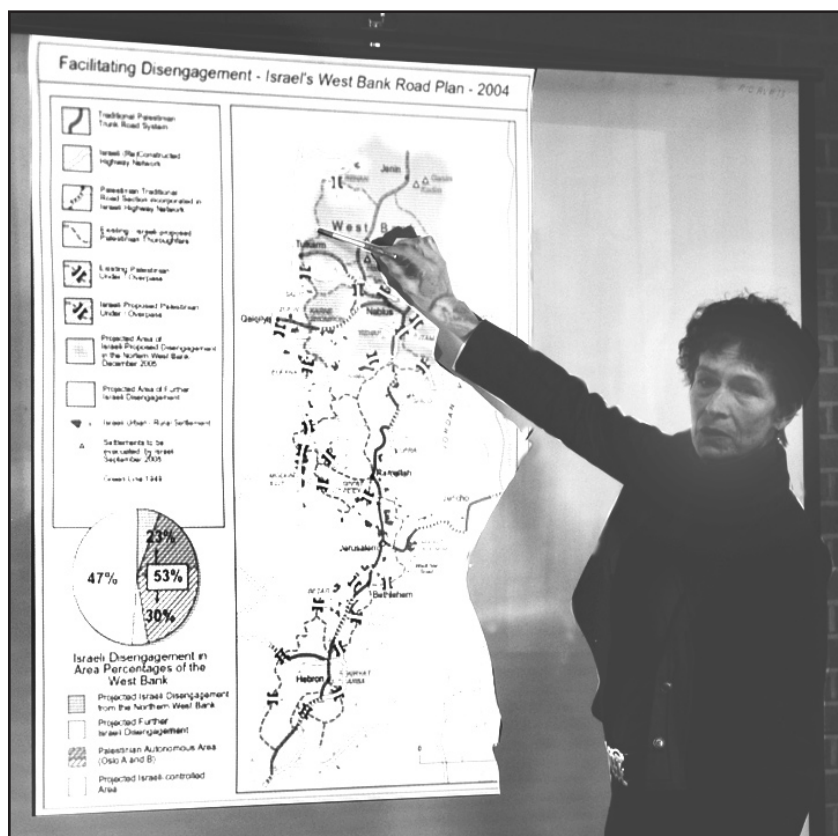
Sabra Gallup '59, left, and Pauline Ucci Dyson '59 on the terrace of the RICE building in September of 1955.



EMILY'S LIST regional director Kate Coyne-McCoy MSW '87 speaks at the second annual Nancy Gewirtz Symposium in the School of Social Work atrium on March 9.



KEYNOTE SPEAKER Susan Ohanian, an author and nationally known expert on writing, addresses attendees at the Annual Spring Conference of the R.I. Writing Project in the Student Union ballroom April 1.



INGO LECTURE: Johanne Djurhuus, a Danish Foreign Ministry representative, speaks on Iraq, Gaza and the West Bank on March 8 in the Alumni Lounge in Roberts Hall. The talk marked the launch of the INGO (International Non-Governmental Organizations) Lecture Series sponsored by the Faculty of Arts and Sciences.

Prof. Maureen Reddy to present Thorp Lecture April 26

Maureen Reddy, professor of English and the 2005-06 Mary Tucker Thorp College Professor, will deliver the Thorp Lecture Wednesday, April 26 at 4 p.m. in the Faculty Center.

Her lecture is titled "Inside Work": Metaphorical Homes and Theoretical Tools."

Reddy, a member of the RIC faculty since 1987, has focused her research and teaching on issues such as literary and cultural theory, Victorian fiction, race, popular culture, crime novels and African American literature.

She is the author of seven books, which have earned her the Gustavus Myers Award (Human Rights Area), the Koppelman Award for Excellence in Feminist Studies of Popular Culture, and the Minnesota Book Award.

Reddy has also published numerous



articles and book reviews and presented dozens of papers and conference talks. Recently, she has researched the changing racial situation in Ireland,

working toward a book on race and nation in Irish popular culture.

Active in many professional organizations, Reddy is a board member of the National Women's Studies Association and is a founder and steering committee member of the Southern New England Consortium on Race and Ethnicity. She serves on the board of directors of the George Wiley Center in Pawtucket and is a co-chair of the Education Committee at School One in Providence.

Reddy received her PhD from the University of Minnesota, and earned BA and MA degrees from Boston College.

The Mary Tucker Thorp College Professorship is awarded each academic year to a full professor with at least six years of service at RIC who has demonstrated excellence in teaching, scholarship and/or professional and collegial service. The professorship honors the contributions of Mary Tucker Thorp, whose career at the College spanned 41 years (1926-1967).

FSEHD scholarship applications available

The Feinstein School of Education and Human Development scholarship applications are available for 2006-2007 in Horace Mann Building, Room 109. Applications must be submitted by May 12, 2006 to Kim Crabill in the same location.



FACES of RIC



Since graduating from Rhode Island College in 1994, Christina Rondeau has certainly taken the road less traveled. That road, guided by a love of martial arts, has taken her places few would even dream of.

Rondeau has released her first book and a fitness video, opened a professional gym and was chosen as the only female member of the new World Combat League New England team. And that was just this past year.

While a student, Rondeau, who holds a bachelor's degree in English, thought of becoming a teacher or journalist. But she responded to another calling instead.

"My karate career was unfolding as I studied at RIC," she recalls. While Rondeau chose the path of professional martial arts, her English degree would prove itself invaluable years later when she began writing books about self-defense.

Rondeau was first introduced to karate in 1990 and was immediately hooked. She eventually earned her black belt and won over 200 trophies and awards at tournaments all over the world. Rondeau segued into a professional career in kickboxing in 1998 and found even more success when she won the United States Lightweight Title in 1999.

In 2000, Rondeau made her debut as a professional boxer and was endorsed by Puma.

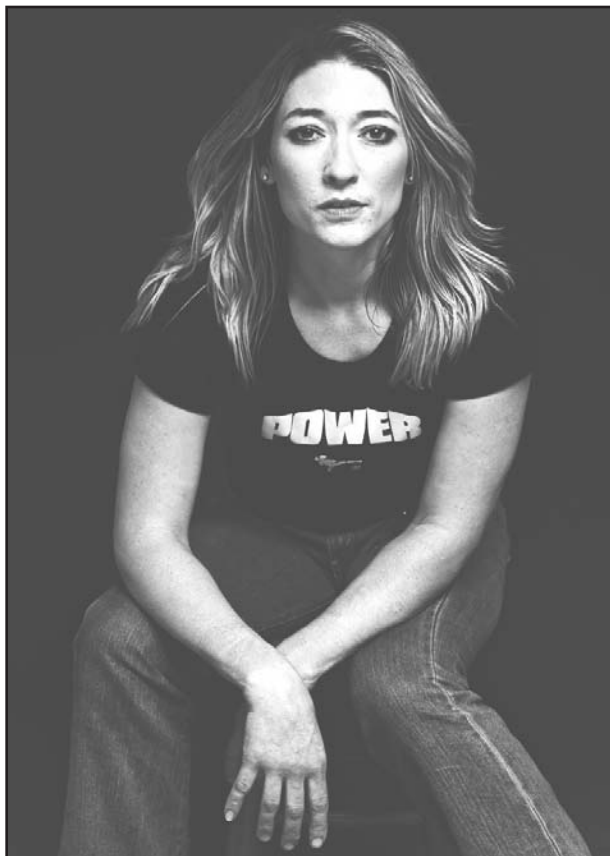
Most recently, Rondeau was selected to join the World Combat

League, a professional fighting league created by well-known martial arts and TV star Chuck Norris. The WCL is comprised of two divisions and eight regional teams. Rondeau is the only female on the six-member New England Strikers.

For Rondeau, there was no rigorous tryout to join the WCL — she was invited. "They received thousands of inquiries from fighters from all over the world, but when they thought of a New England female, my name just kept coming up," she said.

Rondeau's accomplishments have sent a great deal of attention her way. She has appeared in over 200 newspaper articles and has been seen on New England Sports Network and local Rhode Island news channels.

She has been featured in the pag-



CHRISTINA RONDEAU '94

usual and successful career.

Putting her RIC degree to good use, Rondeau has recently released her first book, *The Elements of Staying Safe*. The book teaches women how to protect themselves in various situations.

Rondeau uses short stories and scenarios to illustrate her safety tips. "I use the scenarios to draw the reader in, then explain what the people did or did not do right," she said.

Writing her book reminded Rondeau of her coursework at RIC. "I

es of *YM* magazine and was selected as a *Cosmopolitan* magazine "Fun, Fearless Female" in 1999. She appeared on the Maury Povich Show for an episode aptly titled "You'll never guess what I do for a living." Rondeau reports no one in the audience guessed her un-

remember some very good professors. When they corrected my essays for the literature classes it was very helpful. It helped me create my own writing style."

What are some safety tips that Rondeau suggests for women? Rondeau said people need to "stay smart and think ahead." Always have a plan, she said. "If you hear a noise, what are you going to do? Are you just going to walk into your kitchen? If you have a security alarm, know what you are going to do if it goes off."

She urges women to keep their cell phones near their bed at night. "Why not charge it next to your bed so it's there if you need it?" she said. Rondeau also suggests looking at your own home from the outside and pretending you are someone who wants to break in. "Ask yourself, where are the weaknesses?"

Most of all, Rondeau feels people should trust their intuition. "You get a vibe for a reason. Follow your instincts about a situation."

To add to her seemingly frantic schedule, Rondeau has another book, *Power Parent*, soon to be available. Rondeau is also releasing her third fitness video, *Xtreme Fitness*, aimed at martial arts schools and health clubs.

She also runs her own gym in Greenville, Rondeau's Kickboxing, which first opened its doors in April of 2005.

For more information on her books, videos, gym, or fight schedule, visit rondeauskickboxing.com.



SHERLOCK KICKOFF: Providence Mayor David Cicilline (right) greets members of the family of the late Paul Sherlock, including Sherlock's widow Ann (to the mayor's right), and son Timothy (foreground), at a reception March 10 in Alger Hall. The event was the official start of a campaign to convert Building 7 on the east campus into the Paul V. Sherlock Center on Disabilities.



INTERNATIONAL DAY (Feb. 3) at Henry Barnard School is an opportunity for first grade students and their parents to experience the food and customs of different countries. Yukiko Ishizuka helps Sarah Ross, 6, don a kimono, while Tao Ishizuka watches.



THE WEDDING: Harriet Ross (played by Bethly Cruz) marries John Tubman (Ariel Bastista) in a scene from *Journey to Freedom*, a play about abolitionist Harriet Tubman by Henry Barnard School teacher Sharon Fennessey '67 and performed by Barnard School students March 17 in Sapinsley Hall in the Nazarian Center for the Performing Arts. To the right and left of the happy couple are Haig Hengen and Hannah Zurier.

2006 Awards Dinner
Thursday, May 11

Reception 5:30 p.m., Dinner 6:15 p.m.

Donovan Dining Center



KEITH COUTO



DOROTHY
HENDERSON WOOD



ALEXANDER LYON



ALLAN FUNG



ANN GALE

Alumni Hon

Honor Roll recipients are recognized for their achievements in their careers and demonstrates the value of a Rhode Island College degree. Members of the Board of Governors receive graduate degrees from 15 different colleges and universities. A photograph of each recipient is taken and displayed in the Board of Governors Room in Roberts Hall for one year.



NORMA HARDY



KENNETH WEAKLEY



JOSEPH FERREIRA, JR.



JAMES CLIFT



JAMES SWANBERG



JERRY ELMER



SUSAN ESPELIN OSBERG



J. MICHAEL LENIHAN



JOE DZIOBEK



JUDITH ANNE ROBERTS NOBLITT



LORI HUGHES

Accounting: Lynda M. Buteau Gilbert '92, CPA
Partner, Carlin, Charron & Rosen LLP

Anthropology: James Swanberg '82
Captain/Detective Commander, R.I. State Police

Art: Ann Gale '88
Associate Professor, University of Washington, Seattle

Bachelor of General Studies: Jerry Elmer '86, Esq.
Partner, Goldenberg & Muri LLP

Biology: Dorothy Henderson Wood '94, PhD
Instructor, Biology, Durham Technical Community College, Durham, N.C.

Communications: Alexander Lyon '95, PhD
Assistant Professor, University of Arkansas, Little Rock

Computer Science: John W. Avizinis Sr. '01
Senior Analyst - Applications Programmer, Bank of America

Dance: Judith Anne Roberts Noblitt '66
Associate Professor Emerita/Physical Education Dance Program,
Founder/Artistic Director/Choreographer, Northeastern University Dance Theatre

Economics/Finance: Kenneth R. Weakley '89
Managing Director, Equity Research, UBS Securities, LLC

Elementary Education: Lori Hughes '81
Principal, Charles N. Fortes Elementary School, Providence School Dept.

English: Diana Petrosinelli '92
Administrative Intern/English Teacher, Cranston High School East

Health Education: Norma V. Hardy '97
Project Coordinator, Brown University Institute for Community Health Promotion

History: Joseph J. Ferreira, Jr. '87
History Teacher/Theatre Director, King Philip Regional High School, Wrentham, Mass.

Industrial Technology/Graphic Communication: Keith Couto '01
Co-Owner, Barrington Printing, Cranston

Justice Studies: James E. Clift '92
Detective, Bureau of Criminal Identification, Providence Police Dept.

Management: Lynn Fawthrop '90
Vice President for Enrollment Management & Retention, Roger Williams University

Marketing: Kelly Cummings '89
Vice President/Trust Officer, Washington Trust Company



LYNDA BUTEAU GILBERT



BENJAMIN GREENE



JOHN AVIZINIS SR.

Award presentations immediately following dinner
Cost: \$35
Reservation deadline: May 5
Call 401-456-8086 for more information.

Honor Roll 2006

osen fields and their distinction as role models whose success
this year's Honor Roll represent 32 fields of concentration, with
aph and background information on each winner is mounted, framed
year, and then sent to the respective departments for permanent display.

Mathematics: Susan L. Espelin Osberg '66
Adjunct Faculty; Instructor, Secondary Education/Math, University of Rhode Island;
Reitred Teacher

Modern Languages: Christopher J. Petrarca '95, Esq.
Attorney, Petrarca Law Offices, LLC, Providence

Music: Benjamin Green '82
Performing Arts Coordinator, Concord School District/Concord High School, N.H.

Nursing: Kyong Winkler '01
Captain, U.S. Army

Physical Education: Susan K. Smith Parillo '88
Health & Physical Education Teacher, Johnston School Dept.

Physical Sciences/Chemistry: Robert F. Lonardo '90, PhD
Manager, Reference Standards Laboratories, Pfizer, Inc., Conn.

Political Science/Public Administration: Allan W. Fung '92, Esq.
Government Relations Counsel, MetLife
City Councilman, Cranston

Psychology: Kimberly J. Mitchell '94, PhD
Research Assistant Professor, Crimes Against Children Research Center,
University of New Hampshire

Secondary Education: J. Michael Lenihan '67
Senator/Chairman, Committee on Government Oversight, R.I. State Senate;
Retired Teacher

Social Work: Stephen J. Lynch '82
Captain/Detective Commander, R.I. State Police

Social Work MSW: Joseph F. Dziobek '83, MSW
President/CEO, Fellowship Health Resources, Inc.

Sociology: Wayne C. Solomon '91
Professor, Community College of Rhode Island
Senior Pastor, Church of God

Special Education: Sally Radford Arsenault '75
Education Specialist, Office of Special Populations, R.I. Dept. of Elementary
and Secondary Education

Technology Education: Rebekah John Gendron '98
Technology Education Teacher, Riverside Middle School, East Providence
Co-President, R.I. Technology Educators Association

Theatre: Jennifer Mudge '95 M.F.A.
Actor; represented by The Gersh Agency, CESD Talent Agency,
and Bleecker Street Entertainment



DIANA PETROSINELLI



STEPHEN LYNCH



ROBERT LONARDO



WAYNE SOLOMON



SALLY RADFORD
ARSENAULT



SUSAN SMITH PARILLO



KIMBERLY MITCHELL



REBEKAH JOHN
GENDRON



KYONG WINKLER



LYNN FAWTHROP



JENNIFER MUDGE



KELLY CUMMINGS



CHRISTOPHER
PETRARCA

Alumni Awards

Continued from p 1

(development of a new program, wide community recognition of quality of service to the community or campus).

“Deb,” as she is known by faculty, staff and students alike, is a major facilitator when it comes to the myriad of activities for which our College is so well known.

Whether it is a performing or fine arts activity or an athletic event, it is Iannuccilli who keeps the fiscal engine going. Iannuccilli manages the books, or more accurately, she manages the individuals who manage the books, and all with a smile on her face.

Always generous with her time and expertise, Iannuccilli is one of our many unsung staff members who play a significant role in guiding staff and faculty toward responsible administration of the College's financial matters. She helps organize and manage the budgets and records of many of the organizations on campus. All this is accomplished with a combination of patience, humor, understanding, and a firm insistence on adhering to requisite guidelines.

Iannuccilli joined the accounting office staff in 1989.

2006 Alumni Service Award Michael F. Ryan '74

Regional President, Business Services and Public Affairs, National Grid
Criteria: An alumnus/a or non-alumnus who has made an important contribution to the College, by giving time, talent, or resources; or an outstanding citizen who has made a contribution to the state or nation that reflects ideals of service to humanity.

The expression “ask a busy person to do something and it will get done” describes Mike Ryan very well. His background in public service in the administrations of Senator John Chafee and Governor J. Joseph Garrahy prepared him for a lifetime of serving the state

in non-profit organizations. His understanding of public policy makes him one of the most sought after individuals to serve on boards and commissions. In 1994, Ryan joined Narragansett Electric Company and today holds the title of executive vice president.

Ryan is also vice chairman of the R.I. Board of Governors for Higher Education and chairs its finance committee. He was appointed to the Board of Governors of the R.I. Commodores, the Public Advisory Committee of the R.I. Bays, Rivers and Watersheds Coordination Team, and the R.I. Economic Policy Council. He is chairman of Grow Smart R.I. and serves on the board of the Greater Providence Chamber of Commerce, R.I. Public Expenditure Council and Professional Facilities Management. In addition to those duties, Ryan serves as chairman of Girls and Boys Town of New England, Inc. He is a 1993 graduate of Leadership Rhode Island and was the College's political science Honor Roll recipient in 1993.

2006 Charles B. Willard Achievement Award Marybeth Peters '61

**U.S. Register of Copyrights;
Director, U.S. Copyright Office
and Associate Librarian
of Congress**

Criteria: Graduate of the College, brought honor to the College by distinguished achievement in his/her field.

The Alumni Association is pleased to add one more accolade to the lengthy resume of Marybeth Peters – the 2006 Charles B. Willard Award. Peters graduated as one of four women from the George Washington University Law School in 1971 and served as an adjunct professor of law at Georgetown University Law School, the University of Miami Law School, and the Catholic University School of Law. She serves on the Intellectual Property Advisory Committees of the George Washington University Law School and similar boards of three other law schools.

In 1965, Peters joined the U.S. Copyright Office, which boasts a long tradition of promoting progress

of the arts and protection for the works of authors. Peters is a frequent speaker on copyright issues and is the author of *The General Guide to the Copyright Act of 1976*. Over the years she has testified on contentious copyright issues.

In March 2006 Peters received the Los Angeles Copyright Society Lifetime Achievement Award. She is also the recipient of the Business Software Alliance Cyber Champion Award, Computer Law Association President's Award for Distinguished Service, and Women in Music's Touchstone Award.

2006 Alumni Faculty Award E. Pierre Morenon Associate Professor of Anthropology

Criteria: Need not be a graduate of the College but employed by the College. Wide recognition for exceptional competence in teaching, printed publication, initiative in research, development of a new program, community recognition of quality of service to the community or campus.

Pierre Morenon, who came to RIC in 1978, has directed the Public Archaeology Program, led field archaeology workshops, and taught popular courses including one on Native North America.

Morenon has completed over 100 archaeological projects in Rhode Island, from evaluations of ancient Narragansett sites to studies of children's play through artifacts excavated at the former site of the State Home and School on RIC's east campus. Morenon, in fact, was one of the first leaders of The State Home and School Project. His passion for the project and his credentials helped to secure a grant from the R.I. Council on the Humanities to conduct an oral history component of the project.

Active in many areas of the College community, Morenon recently chaired the Writing Board, and is currently chair of the Faculty Development Committee. Outside the College, Morenon has served on the boards of the R.I. Council of Churches, Camp Street Ministries, and the Woolman Hill Retreat Center.

He received his undergraduate degree from Johns Hopkins University and his MA and PhD from Southern Methodist University.

2006 Young Alumni Award Jason Anthony '99 M '05, Assistant Director of Admissions

Criteria: Graduated in the last 10 years from the College, and has made a contribution to the College, since graduation, by giving time, talent, or resources (e.g., mentor of current students or alumni, involvement or volunteer with a campus group or activities, or providing internship opportunities to current students or job opportunities to recent graduates).

Successful graduate, active volunteer and valuable college employee... all sum up our 2006 Young Alumni Award recipient. Jason Anthony joined the Alumni Board in 2000, a year after graduation, and has contributed his time and resources to many of its activities for the past seven years.

In his dual role as board member and admissions officer, Anthony has worked to enhance our Legacy Luncheon during the spring admissions acceptance event, joined the Homecoming committee to expand activities, and served on the awards, book awards, and scholarship committees. Anthony is completing his first term as an officer presently serving as the Alumni Association's secretary.

A psychology major with a minor in theatre, Anthony is very comfortable at the podium. He enjoys representing the alumni association at events, speaking about his undergraduate education as well as his work in the admissions office. He also provides valuable assistance at our events, fundraisers, and with committee work.

With all of these duties, Anthony still managed to complete his MA in media studies in May 2005. He recently produced and directed his first documentary film and established his own production company.

See pages 10-11 for Alumni Honor Roll recipients.

RIC on the Road — Orlando, Fla.



Michael Gagne '04 and Michele Fanelli '04.

On March 11, RIC President John Nazarian and the Alumni Association, along with the Dept. of Athletics, hosted an event at the Marriott Orlando World Center. The reception was attended by alumni, friends of the College, coaches and families of the RIC baseball and softball teams, who were in the area for tournaments.



Marcia Cowan '73 and Donald Tencher, athletics director.



President John Nazarian '54 and Susan Harrison '77.

RESEARCH AND SCHOLARSHIP

Welcome to RIC's Convocation of Scholars.

Welcome to the third annual Convocation of Scholars Celebration. We hope you find this year's showcase of activities of the intellectual and creative life of the College interesting and eclectic. As you review this year's program, you will notice a diverse mix of student, faculty, and public events – each of which represents some aspect of the College's scholarly orientation. I am confident you will find the schedule noteworthy and I hope you are able to participate in several of the planned events.



Dan L. King, Ed.D.
Vice President for Academic Affairs

Convocation of Scholars Committee:

Patricia Nolin, Chair, Special Assistant to the President
Teresa Coffman, Associate Professor of Music

Joan C. Dagle, Professor of English and
English Department Chair

Dan L. King, Vice President for Academic Affairs

Mark T. Motte, Professor of Geography, and Director
of the Center for Public Policy

Anne M. Pascucci, Assistant Director, Office of Research
and Grants Administration

Karen M. Rubino, Special Assistant to the President for
Web Services

Kathryn Gray Sasso, Director of Conferences and Special Events

Monday, April 24

Nursing Department Preceptors Event

An evening of recognition for registered nurse students and their clinical preceptors, highlighting students' accomplishments, and the collegiality between Rhode Island College and the many agencies that partner with the Nursing Department.

Student Union Ballroom, 5 p.m.

Tuesday, April 25

Faculty Research Celebration

In celebration of Convocation of Scholars, the Rhode Island College Community is invited to share in the research and creativity of Rhode Island College faculty members who were granted sabbaticals throughout the 2004-05 academic year. Reception will follow.

Alger 110, 4 p.m.

Consumer Agency Advisory Recognition

An opportunity for those in health care agencies who work with students. Hear about changes happening in the Nursing Department. A discussion on how students might be better prepared to work as health care professionals.

Student Union Ballroom, 4 p.m.

Wednesday, April 26

Addiction and Aging

Sponsored by the Gerontology Center, in collaboration with the Psychology Department and the Chemical Dependency/Addiction Studies Program (CDAS). The conference will explore problems of drug, alcohol, smoking and gambling addictions in older adults. Treatment options and community services for older adults with addiction problems and their families will also be addressed.

Faculty Center South Dining Room, 8:30 a.m.

Sigma Xi Student Research Symposium

Clark Science 128, 12:00 pm

Student Honors and Scholarship Reception, English Department

Presentation of scholarships and awards to English Department majors and celebration of students who have written English Honors theses.

Craig-Lee 255, 12:30 p.m.

Biology Department Seminar Series

“Ribonucleases H: Exploitable Viral Drug Targets and Novel Enzymes in Parasite Nucleic Acid Metabolism”

Speaker: Dr. Andrew Campbell, Brown University
Fogarty Life Science 050, 12:30 p.m.

15th Annual Psychological Research Conference

Psi Chi Research Presentations, Psychology Department

Alger 110, 12:30 p.m.

Alpha Kappa Delta Honor Society Induction Ceremony

Sociology and Justice Studies Majors, Announcement of:

Lauris B. Whitman award –Sociology

Mary Ann Hawkes award –Justice Studies

Harold Sweet award – Gerontology

Faculty Center South Dining Room, 12:30 p.m.

Medicinal Plant use by Capuchin Monkeys in Costa Rica

Lecture presented by Dr. Mary Baker, focusing on the evolution of the brain and cognition, with emphasis on medicinal plant use: which plants the monkeys use, how and when they use them, and how the monkeys learn to recognize them. Sponsored by the Department of Anthropology

Gaige Hall 254, 12:30 p.m.

Concepts of Teaching-Learning Celebration

Elementary Education Celebration of first semester Elementary Education students making connections with their students and families in the field.

Federal Hill House 9 Courtland St, Providence, 3:30 p.m.

Mary Tucker Thorp College Professorship Lecture

“Inside Work”: Metaphorical Homes and Theoretical Tools

Presented by Maureen Reddy, 2005-06 Mary Tucker Thorp College Professor.

Faculty Center, 4 p.m.

The Alliance for the Study and Teaching of Adolescent Literature (ASTAL) Conversation Series

“The Urgent Need for Literary Experiences in the Age of Accountability”, presented by Dr. Pamela “Sissi” Carroll, professor of English education at Florida State University.

Student Union Ballroom, 5 p.m.

Estate and Tax Planning Tips: Trends and Updates You Need to Know

David G. Prentiss Esq., Adjunct Professor in the School of Management will address the issues of estate plans, wills vs. trusts, power of attorney, living wills, and charitable giving. Sponsored by The Rhode Island College Foundation and Alumni Association.

Alger Hall 110, 5:30 p.m.

Thursday, April 27

Faculty Promotion and Tenure Reception

President's House (by invitation only), 3 p.m.

Sigma Xi Poster Presentation

Student Union Ballroom, 5 p.m.

Kappa Psi Chapter of Phi Alpha Theta: Annual Honors Initiation

Honors Initiation and 40th Anniversary of the founding of the chapter.

Roberts Hall Alumni Lounge, 5 p.m.

Friday, April 28

Center for Public Policy – Panel Presentation and Research Luncheon

Panel presentation featuring the Center for Public Policy Programs and Research Principal Investigators.

Faculty Center - Main Dining Room, Noon

“RIC Film Studies Program Turns 30”

Film Studies award reception and program celebration.

Craig-Lee 265, 1 p.m.

Emeriti Appreciation Evening

In celebration of “Convocation of Scholars”, emeriti faculty are invited to share dinner and collegiality. Guests will be invited to enjoy the Rhode Island College Wind Ensemble or the Student Choreography Showcase

Student Union Ballroom (by invitation only), 5:30 p.m.

Saturday, April 29

The Ridgway F. Shinn, Jr., Study Abroad Fund Reception

Maintained by the Rhode Island College Foundation, The Shinn Study Abroad provides financial support for Rhode Island College undergraduate students to engage in planned study outside the United States. Since 1991, the fund has supported forty-four students going to twenty-one different countries. Grants are given for periods of from three months to twenty-four months. The fund is supported through gifts and fundraising events.

Following the Saturday matinee of Sweet Charity on April 29, 2006, donors who purchased their tickets to the performance through the Shinn Committee as one of its fundraiser events or gave a donation this spring are invited to enjoy an international dessert reception. Newly selected award recipients will describe their plans for studying abroad in the coming year, and a returned award recipient will share his or her experience.

Roberts Hall – Alumni Lounge

Monday, May 1

Dean's List Reception , Honors Project Celebration

Students who achieved Dean's List status in the spring and fall semesters of 2005 are invited to meet with the deans. A poster presentation of Honors Projects will also be displayed in Alumni Lounge.

Roberts Hall Lobby/Alumni Lounge, 3:30 p.m.

Tuesday, May 2

Adjunct Faculty Appreciation Dinner

Student Union Ballroom (by invitation only), 6 p.m.

Wednesday, May 3

Cap and Gown Convocation

Capping ceremony for graduating seniors. Presentation of academic department awards.

The Auditorium in Roberts Hall, 12:30 p.m.

RIC Arts and Entertainment



Spring Celebrat

African American mural art on display at Bannister April 6 – May 4

Bannister Gallery will present the exhibit "Walls of Heritage, Walls of Pride: African American Murals" from April 6 to May 4. This exploration of the mural tradition in African American art includes didactic material as well as drawings and other documentation.

A traveling exhibition, it was most recently shown at the Anacostia Museum in Washington, D.C. The guest

curator is Robin Dunitz, coauthor of *Walls of Heritage, Walls of Pride: African American Murals*. The April 6 opening will feature a lecture by Dunitz at 6 p.m. followed by a reception.

The show is presented in collaboration with the International Gallery of Heritage and Culture, the Bannister Society, the RIC School of Social Work, and the Unity Center.

Gallery hours during exhibits are Monday, Tuesday, Wednesday and Friday, 11 a.m.-5 p.m., and Thursdays, noon-9 p.m. Closed weekends and holidays. Exhibits and events are free and all are welcome to attend. Accessible to persons with disabilities. For information on event dates and exhibit opening receptions, check the website at www.ric.edu/Bannister/ or call 401-456-9765.



Paul Goodnight mural with students from Madison Park High School in Roxbury, Mass. *Mandela* (detail).



Mozart 'Conversation' at RIC April 18

Jeffrey Siegel returns to Rhode Island College for an informative and elegant celebration of Mozart on Tuesday, April 18 at 7:30 p.m. in Sapinsley Hall in the Nazarian Center. The innovative pianist will present his widely acclaimed Keyboard Conversations in a performance titled *Mozart and Ravel: Exhilaration and Eloquence*. It is the third and concluding RIC concert given by Siegel to celebrate the 250th anniversary of the legendary composer's birth.

Keyboard Conversations are described by *The New York Times* as "full of passion." Siegel, who has entertained and enlightened RIC audiences for over four years, provides a colorful explanation of the work before performing it, giving the audience an in-depth appreciation of a timeless classic.

"In the best of all possible worlds, every concert would be like one of Jeffrey Siegel's Keyboard Conversations," said *The Milwaukee Journal-Sentinel*.

Tickets for Jeffrey Siegel's Keyboard Conversations are \$25, with discounts for seniors, RIC faculty/staff/students and children. For your convenience, tickets can be purchased as follows: in advance via VISA or MasterCard by calling 401-456-8144 from 10 a.m. to 4 p.m. weekdays; online at www.ric.edu/pfa; or in person at Roberts Hall box office until the time of the performance on the day of the event.

RIC Chorus joins Symphony Orchestra for 28th Annual Bicho Concert

Beethoven's music is the bill of fare for the 28th Annual Bicho Family Memorial Scholarship Concert featuring the RIC Symphony Orchestra and College Chorus. The concert will take place Monday, April 24 at 8 p.m. in Sapinsley Hall in the Nazarian Center.

The program consists of two of Ludwig van Beethoven's most popular works – *Symphony No. 5 in C Minor* and *Mass in C Major*. Joining the orchestra for *Mass* will be a quartet of faculty soloists and the College Chorus. The soloists are Kara Lund, soprano; Susan



KARA LUND



SUSAN RODGERS '90



FREDRIC SCHEFF '83



TIANXU ZHOU

Rodgers, mezzo-soprano; Fredric Scheff, tenor; and Tianxu Zhou, baritone.

Teresa Coffman, chorus director, will conduct the combined forces in *Mass*, and Edward Markward, orchestra conductor, will lead *Symphony No. 5*.

The Bicho Concert, established

in 1979, is performed in memory of Rita V. Bicho, a RIC faculty member who passed away in 1981, and her sister Mary Bicho who died in 1998. Mary Bicho was a music educator in East Providence schools and a fundraiser and benefactor to what was formerly the Rita V. Bicho Memorial Scholar-

ship Fund. Upon her death, the endowed scholarship was renamed the Bicho Family Memorial Scholarship Fund.

Proceeds from this concert are deposited in the fund, which is administered by the RIC Foundation. Each year, one to four one-year scholarships are awarded from the interest on

the principal of the fund. Winners are selected by the music faculty from the areas of voice, keyboard, strings, and woodwinds, brass and percussion.

A donation of \$10 is requested for the Bicho Concert. RIC students are admitted free.

ion of the Arts 2006



RIC Chamber Players to present Stravinsky masterpiece April 21



The RIC Chamber Players, a newly formed faculty ensemble, will perform in Igor Stravinsky's masterpiece *L'Histoire du Soldat* (The Soldier's Tale), the centerpiece event of RIC's April-long 2006 Celebration of the Arts. The performance, led by conductor Edward Markward, professor of music, will be held Friday, April 21 at 8 p.m. in Sapinsley Hall in the Nazarian Center.

The production will feature stage direction by P. William Hutchinson, professor emeritus of theatre, and choreography by Michael Bolger, adjunct dance faculty. Eva Marie Pacheco (Princess), Michael Truppi (Soldier), Jennifer Swain (Devil), and William Jones (Narrator) will play the leading roles.

L'Histoire du Soldat came about through necessity. In 1917, with war ravaging much of western Europe, Stravinsky and novelist Charles Ferdinand Ramuz were in Switzerland, isolated from publishers and the public, and deprived of royalties. The notion that their coffers could be restocked by touring a modest production in small Swiss theatres took hold, and limiting circumstances stimulated the creation of a masterpiece.

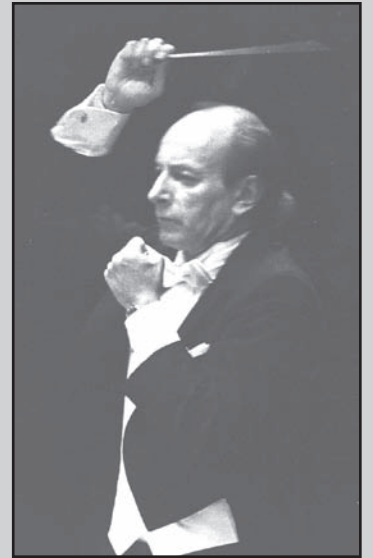
Ramuz' tale gives flesh to a modest Russian folk story drawn by

Ramuz from the vast collection of Alexander Afanasiev 60 years before. It reaffirms the notion that selling your soul to the Devil is inevitably a bad deal. As adapted by Ramuz and Stravinsky, the story is in a two-part dramatic structure, each with three scenes. A narrator sits on a stool at one side of the stage, with the seven musicians on the opposite side. The action of the Devil, Soldier and Princess takes place between.

Seven RIC faculty musicians will perform – John Sumerlin, violin; Eliot Porter, contrabass; Ian Greitzer, clarinet; Susan Wood, bassoon; Joseph Foley, trumpet; Kevin Kane, trombone; and Michael DeQuattro, percussion.

The event is sponsored by the Performing and Fine Arts Commission in cooperation with the dean of the Faculty of Arts and Sciences and the Dept. of Music, Theatre, and Dance. Visit www2.ric.edu/pfa for details about other related events.

General admission is \$10; seniors and non-RIC students, \$5; RIC students, free.



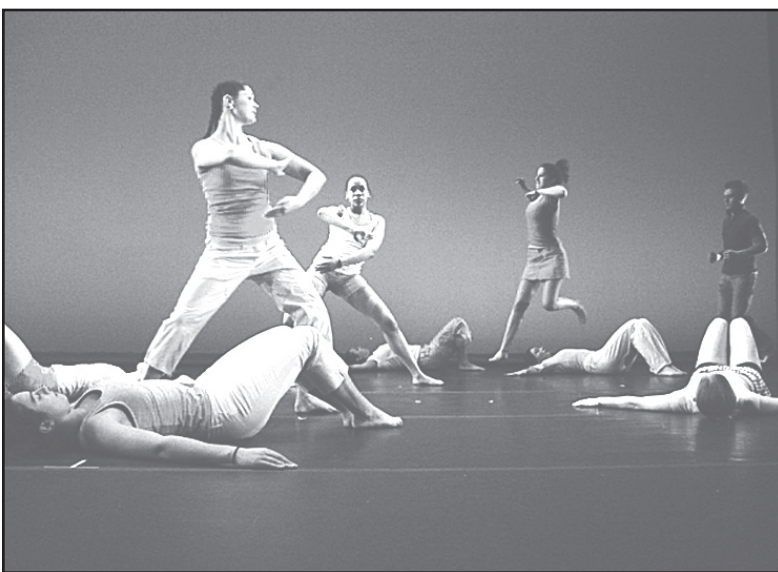
EDWARD MARKWARD

Student Choreography on display at Forman Theatre

New student dance works will be presented in the Student Choreography Showcase Thursday and Friday, April 27-28 in the Forman Theatre in the Nazarian Center. These creations are the result of course work and independent projects completed throughout the academic year, and this annual perfor-

mance provides advanced students with an ideal venue for their work.

General admission is \$8; \$6 for seniors, groups and non-RIC students; \$4 for RIC students. Tickets may be purchased in advance at the Roberts Hall box office. For further details, call Dante Del Giudice, director of dance, at 401-456-9791.



THE RIC DANCE COMPANY performs Arthur Aviles' dance *Rumble*, *Rumble*. (Photo by Nikki Carrara)

Triplet of jazz shows on tap at RIC

It's going to be a busy month for members of the RIC Concert Jazz Band as they perform in three events – two with widely acclaimed professionals, and the last one starring them.

The first of the two collaborations is with the internationally revered performer, composer, arranger, and professor Greg Hopkins. The free performance will be held on Wednesday, April 12 at 8 p.m. in the Sapinsley Hall in the Nazarian Center.

On Wednesday, April 19 is the

The RIC Jazz Workshop Combos Performance directed by Greg Abate (see story on page 16).

The last presentation will be the annual Spring Jazz Concert led by Jazz Band director Joseph Foley. This event will take place on Monday, May 8 at 8 p.m. in Sapinsley Hall in the Nazarian Center. On the program for this performance are selections from Count Basie, Chick Corea, Miles Davis and many more. General admission is \$5 (free for students and senior citizens).

RIC Wind Ensemble presents *Transformations* on April 28

The Rhode Island College Wind Ensemble's last concert of this season, *Transformations*, will take place on Friday, April 28 at 8 p.m. in Sapinsley Hall in the Nazarian Center. The concert explores how composers borrow from other composers to create entirely new works.

The performance will be unique because of the important involvement of the students. Elena Bucci, winner of the senior concerto competition, will perform the *Premiere Rhapsodie of Claude Debussy*. The band is also performing two other pieces, *Lincolnshire Posy*, which is a fusion of music and anthropology, and the *Funeral Music for Queen Mary*.

Robert Franzblau, associate professor of music and conductor of the band, shares the stage with Jonathon D' Amico, student conductor, for the exploration of the piece *Funeral Music for Queen Mary*, originally composed by Henry Purcell and adapted by Ste-

ven Stucky.

Percy Grainger's *Lincolnshire Posy* is universally recognized as one of the most significant works ever composed for the wind band. Written in 1937, each of its six movements is a setting of an English folk song recorded in the Lincolnshire countryside by Grainger himself. Taken together, these highly personal and emotional settings comprise a bouquet of musical wildflowers as implied in the title.

RIC's Wind Ensemble prepares for six weeks before each concert. "They bring a lot of energy, passion, and commitment whenever they play," said Franzblau, "I am always inspired to work with these great students – they perform with such commitment and musicality."

General admission is \$7; \$5 for seniors and non-RIC students. Concert is free for RIC students, faculty, and staff. Call 401-456-8144 for more information.



ROBERT FRANZBLAU conducts a Wind Ensemble rehearsal.

The Beaux Arts Trio brings beautiful music to RIC

On May 1, the Beaux Arts Trio comes to RIC as a part of the President's Music Series, at 8 p.m. in Sapinsley Hall in the Nazarian Center.

Variations on Beethoven's *Ich bin der Schneider Kakadu*, in *G major*, *Op. 121A*, Shostakovich's *Trio No. 2 in E minor*, *Op. 67*, and Mendelssohn's *Trio No. 1 in D minor*, *Op. 49*, will be performed.

The Trio combines the talents of cellist Antonio Meneses, pianist Menahem Pressler, and violinist Daniel Hope. The group, which made its public debut in 1955, continues to celebrate its 50th anniversary season this year.

Pressler, a founding member of the Trio, along with Meneses and Hope, continue to spark the interests of audiences around the world. The group has performed in various cities, including Boston, New

York, London, Moscow, and Paris.

Most notably, the Trio participated in the "December Evenings" festival in Moscow, Russia, and gave a performance at the 1988 summer Olympics in Seoul, South Korea.

The Trio also performed at the 2000 summer Olympics in Sydney, Australia, and in a month-long U.S. tour with the Prague Chamber Orchestra in spring of 2001. Each year, the Beaux Arts Trio tours the U.S., Europe and Asia.

In fall of 2004, the current Trio released its first recording, *Shostakovich: Piano Trios Nos. 1 & 2; Seven Romances*, under the Warner Classics label.

Admission is \$28, with discounts for seniors, RIC faculty/staff/students and children. For your convenience, tickets can be purchased as follows: in advance via Visa or



THE BEAUX ARTS TRIO

MasterCard by calling 401-456-8144 from 10 a.m. to 4 p.m. weekdays; online at www.ric.edu/pfa; or

in person at the Roberts Hall box office until the time of the performance on the day of the event.

Saxophonist Greg Abate and his students in concert April 19

Imagine playing your first game of basketball with Michael Jordan, or singing your first duet with Frank Sinatra. Rarely do individuals get the chance to perform for the first time with one of the most prominent figures in their field.

Members of RIC's jazz combination classes will get that opportunity when they play with their internationally noted teacher, saxophonist Greg Abate. The RIC Jazz Workshop Combos Performance will be held on Wednesday, April 19 at 7 p.m. in the Forman Theatre in the Nazarian Center.

The students, along with Abate, will play a variety of jazz standards from the American songbook, and bebop classics.

"It's all quality music," said Abate. "This is the true art form of jazz. Every time you hear the same tune twice, you hear it differently. There are infinite choices in which



TAKING NOTES: Greg Abate (right) instructs students on the finer points of jazz.

you could harmonize a tune."

He describes jazz as an artwork fueled by the crowd. Abate urges fellow students to attend in support of their classmates, and discover the art of modern jazz.

"It's energy, man," Abate said. "Jazz is more of a spiritual thing. It's more than just making a show.

The people listening are really important. You need that fire from the crowd."

It appears experience is exactly what the six-year-old jazz department at RIC is all about.

By pairing students with acclaimed performers such as Abate, each student is strengthening his or her passion for jazz from a person who has sculpted that passion into a career. It's an apprenticeship any future jazz professional would be happy to have.

"I want to give them a chance to play a concert," said Abate. "This experience will put them ahead of their peers for future performances."

So come fire up the RIC jazz players as they perform in this annual event. You might be seeing the next Louie Armstrong before he or she sells out the House of Blues.

RIC's Chorus to perform in final concert before weighing anchor



Awards, *arrive-derci*, and Italy are on deck for the annual Bon Voyage Choral Concert on Friday, May 5 at 8 p.m. in Sapinsley Hall in the Nazarian Center.

Groups performing in the concert include the RIC Chorus, the Chamber Singers, the Women's Chorus, and the Men's Chorus, all of which have been preparing a repertoire for a summer trip to Italy, where they will perform in churches and arenas.

The concert will consist of American music along with African American spirituals, and a few Italian songs.

RIC's chorus director Teresa Coffman will be accompanied in the performance by the director of the new RIC Men's chorus, Tianxu Zhou.

"I have the utmost respect for him," said Coffman. "The group is thriving under his direction."

The concert will also feature a send-off celebration for the graduating seniors of the program. Awards will be handed out and seniors will be playing a riff or a couple lines from the instrument they have been perfecting over the past four years.

Coffman, who has been the RIC chorus director since '99, touts RIC's small class sizes, which offer students a more thorough experience.

"The College provides a very close connection between the faculty and students, bringing the students closer to the education," said Coffman.

So come bid farewell to the choral groups as they celebrate the end of one journey while setting sail for the next.

RIC Opera Workshop presents works by classical greats

A RIC opera workshop performance of *Tchaikovsky*, *Beethoven*, and *Gilbert and Sullivan*, directed by Thomas Lawlor, with Christina Breindel as *répétiteur*, takes place Sunday, May 7, at 7 p.m. in the Forman Theatre in the Nazarian Center. Three operas are featured, all with student performers.

Beethoven's *Fidelio* (Act I, scene 1) stars Kate Horigian as *Fidelio*, and Richard Sylvia, Angela Garcia, and Joseph DePina as supporting characters. "*Fidelio*" is actually a woman named Leonore in a prison guard disguise, who attempts to rescue her husband from a political prison.

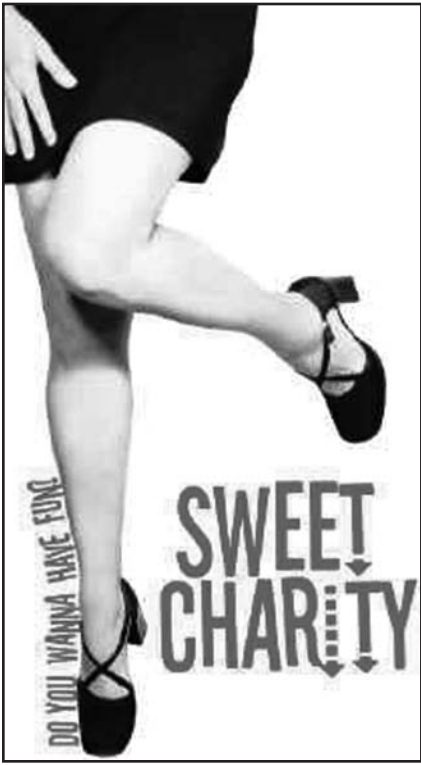
Tchaikovsky's *Queen of Spades* (Act I, scene 2) showcases the talents of Kate Horigian, Richard Sylvia, Kelli Hayden, Megan Coffee, Kimberly Bolton, Alison Kelly, and Angela Garcia. Herman, an army

officer, manipulates Lisa, the granddaughter of a countess ("the Queen of Spades"). The countess knows the "secret of the three cards" and has revealed it to two men, but if she reveals it to a third, she will die. Herman is obsessed with learning the secret.

Lastly, Gilbert and Sullivan's *Princess Ida* will be performed by Carl Bugbee, Richard Sylvia, Patrick Gilson, Megan Coffee, Alison Kelly, Kelli Hayden, and Kimberly Bolton. *Princess Ida* is the only piece by Gilbert and Sullivan with dialogue entirely in blank verse, and satirizes feminism and women's colleges, both of which were hot topics in Victorian England.

Lawlor said that it will be "a good night for opera lovers," because of the variety of time periods of the three pieces.

Broadway Musical 'Sweet Charity' closes in New York, but is coming to RIC



Sweet Charity opened in 1966 on Broadway. The play, written by Neil Simon, featured music composed by Cy Coleman, directed and choreographed by Bob Fosse. The most recent production closed this past December in New York. Fortunately, RIC's Bill Wilson, director, Tim Robertson, musical director, and Angelica Vessella, choreographer, have collaborated to bring a production to the Rhode Island audience. The play will be staged April 27-29 at 8 p.m., and April 29 and 30 at 2 p.m. in the Auditorium in Roberts Hall.

The play revolves around Charity, a dance hall hostess who has bad luck when it comes to men. She is a hopeless romantic trying to find love in the city. Her luck is about to change after she gets stuck in an elevator with a claustrophobic man named Oscar. Maybe it is true that sometimes when you are not looking for love it can find you, but after it finds you, can it keep you?

"*Sweet Charity* is a big dance show. This year we have a lot of talented dancers in the Dept. of Music, Theater, and Dance," said Wilson, who is chair of the department. "RIC has also never done a musical composed by Cy Coleman, one of the greatest Broadway composers of all

time," he added.

Although the dancing will be flavored with the style of Fosse, the play is not using the original choreography. One of the dances that will be performed is the *Rich Man's Frug*, a six-minute dance that takes place in a fancy night club.

The full cast has been rehearsing six days a week for three to four hours a day since Feb 23. Wilson notes that the challenge of this production is to make it as seamless as possible, moving from the text to the song to the dance and incorporating scenery, costumes and lighting.

Wilson is convinced this challenge will be met. "Our students are very talented and very versatile," he said. "They are eager to work hard, outgoing and energetic. Our faculty is committed to producing quality theatre."

General admission tickets are \$18 with discounts for seniors and students, and can be purchased in advance via VISA or Master Card by calling 401-456-8144 from 10 a.m. to 4 p.m. weekdays or in person at the Roberts Hall box office until the time of the performance on the day of the event.

Shinn Study Abroad scholarship recipients head overseas this fall

A pair of RIC students received scholarships from the Ridgway F. Shinn Jr. Study Abroad Fund for the 2006-07 academic year. They will travel overseas – to Spain and Australia – for in-depth study of their areas of interest.



Sara Mouchon
Coventry, R.I.
Junior, international
management and Spanish majors
Spain, fall 2006

"I'm totally interested in cultures of all different kinds."

Siestas, late-night dinners, and immersion in a foreign culture and language...Sara Mouchon is looking forward to a life *en español* this fall when she will travel to Granada, Spain for a semester of study.

The Shinn Study Abroad scholar will matriculate at the University of Granada, staying with a host family from September to December.

Mouchon, who said she was "totally interested in cultures of all different kinds," originally planned to study in South America, but as an international management major, she also wanted to learn about the European Union.

While there, she will take business, history and Spanish classes, for a total of 20 credits, 15 of which will be transferable to RIC toward her degree. She also plans to take "fun" classes such as the history of flamenco.

Mouchon, a Coventry native, is

thrilled to be heading overseas. "I'll miss my family, of course," she said, "but... I will come back with the ability to speak in a different language and that excites me so much."

Careerwise, she would someday like to work in a foreign embassy, possibly as a cultural attaché, Foreign Service officer or translator. "I want my job to permit me to travel around the world," said Mouchon.

Currently, she is employed part-time in RIC's modern languages dept. as a Spanish tutor and office aide. Though she gets to practice Spanish in her job and in class, she knows she can best gain fluency by speaking it 24/7 in Spain.

She'll have that opportunity five months from now.



Alexander Hand
East Greenwich, R.I.
Junior, anthropology
major/history minor
Australia, summer/fall 2006,
spring 2007

"From an academic standpoint, this is going to be great."

For someone who's never been on a plane and never left New England (except for a day trip to New York City), Alexander Hand plans to break his travel drought in a big way this summer. That's when the RIC junior ventures to Sydney, Australia, to further his studies in anthropology. Hand will

attend the University of Sydney from July to November (winter session in Australia), then return from March to June of 2007. He expects to accumulate up to 24 credits while there.

"I'm going to learn so much," he said, including studying the dynamic of coexisting cultures in Australia and comparing the Australian and American ways of life.

Becoming an anthropology major was not in Hand's mind when he began at RIC. He thought about declaring for what he described as a "usable major" – accounting or finance – but soon his enthusiasm for exploring cultures took precedence.

Hand believes he will get a good push forward in pursuing his calling by attending the University of Sydney, whose academic library is the largest in the southern hemisphere. "From an academic standpoint, this is going to be great," he said.

Eventually, Hand would like to earn a PhD in cultural anthropology, on his way to a career in ethnographic fieldwork. A possible

future area of study for Hand is the Middle East, where he is fascinated by the effect of globalization and modernization on Islamic traditions.

In the meantime, Hand said there are many logistics to deal with for his first overseas excursion, and that it was "scary going through all the planning." But based on how much he's looking forward to the journey, there's little doubt that he'll be very well prepared.

The Shinn Study Abroad Fund, maintained by the RIC Foundation, provides income to support undergraduate students in planned study outside the United States. The fund was established in the 1987-88 academic year by Professor Shinn through the generous support of his friends, colleagues, and former students. It allows any undergraduate with 30 semesters of study at RIC who is in good academic standing in any field of study to apply. Grants are for a minimum of three months and a maximum of 24 months abroad and are of variable amounts.

Proceeds from Shinn Fund reception to benefit students' study abroad

The 2006-07 winners of awards from the Ridgway F. Shinn Jr. Study Abroad Fund will be introduced at a benefit reception in the Helen Forman Theatre following the matinee performance of *Sweet Charity* on April 29.

Tickets for the reception and performance are \$30, which will be used to benefit the Shinn Fund. For ticket information or to make a contribution, contact James

Bierden at 401-831-2495, Peter Moore at 508-336-9670, or the RIC Office of Development at 401-456-8087.

Those who return their contribution or ticket order by April 20 are eligible to win a weekend in the Berkshires, including a luxury condo in Lenox, dinner for two and a pair of tickets to the Norman Rockwell Museum. The drawing will take place at the reception.

“*Semana da Lusofonia*”



(Lusophone Week)
presented by



Friends of Portuguese Studies at Rhode Island College

Sponsored by Instituto Camões, Ministério dos Negócios Estrangeiros, Portugal

Tuesday, April 18, 2006: Brazil

Musical Performance by “The Proveta, Arismar & Boccato Brazilian Trio.”

Gaige Hall Auditorium, Rhode Island College Campus, 7:30 p.m.

Tickets: Adults - \$15 at the door; Students w/ ID - Free of charge.

Monday, May 1, 2006: Cape Verde

“**Identidade Cabo-Verdiana.**” (in Portuguese)

Special Guest: Her Excellency Fátima Veiga, Ambassador of Cape Verde to the UN

Speaker: Teobaldo Vigínio, Cape Verdean Author

Alger Hall 110, Rhode Island College Campus, 7:30 p.m. Free and open to the public.

Tuesday, May 2, 2006: Angola

“**As muitas identidades da língua portuguesa.**” (in Portuguese)

Speaker: Ondjaki, Angolan Author

Alger Hall 110, Rhode Island College Campus, 7:30 p.m. Free and open to the public.

Wednesday, May 3, 2006: São Tomé e Príncipe

“**São Tomé ontem e hoje.**” (in Portuguese)

Speaker: Dr. Maria de Deus Manso, Universidade de Évora, Évora, Portugal

Driscoll-Palumbo Conference Room, Kauffman Center, RIC, East Campus, 4:00 p.m.

Free and open to the public.

Friday, May 5, 2006: Portugal

Special Presentation of the play “**A Menina do Mar**” by the **Portuguese Theatre Workshop of RIC** for Secondary School Students of Portuguese in R.I.

Roberts Hall Auditorium, Rhode Island College Campus, 10:30 a.m.

Saturday, May 6, 2006: Angola

“**Conversa com o escritor angolano Ondjaki.**” (in Portuguese)

Speaker: Ondjaki, Angolan Author.

Alumni Lounge, Roberts Hall, RIC Campus, 10:00 a.m. Free and open to the public

Sunday, May 7, 2006: “Festival do Mundo Lusófono”

Master of Ceremonies: Ricardo Farias, WJFD-FM, 97.3 Rádio Globo

- Presentation of the play “**A Menina do Mar.**” by the **Portuguese Theatre Workshop of RIC**
- Presentations by Elementary and Secondary School Students of Portuguese in R.I.
- Presentations of awards to winners of the **Dia de Portugal** in R.I. 2006 art contest winners.
- Booksellers: Luso-Brazilian Books, Porto Editora, Lidel Editora, Texto Editora

Roberts Hall Auditorium, Rhode Island College Campus, 2:00 p.m. Free and open to the public.

For more information contact: Marie R. Fraley, President at 401-762-3520 or mrfracley@cox.net

Dr. Joseph A. Levi, Dept. of Modern Languages, Rhode Island College at 401-456-8712 or JLevi@ric.edu

RIC nursing dept. helps Slovakian emigrant pursue goal of becoming RN

BY

Kerry McCartney
What's News Reporter

Like most little girls, Kristina Rysankova spent her childhood taking care of her dolls.

"I would pretend they had broken legs, put bandages on them, take their temperature," said Rysankova, a native of Slovakia.

Those childhood games taught Rysankova she had a future in nursing. It would be Rhode Island College that would allow her to continue to pursue that dream here in America.

The 30-year-old is the first nursing student to be individually tutored at Rhode Island College so she could qualify to take her nursing boards here in the U.S.

"I came to Rhode Island years ago and loved it here. It reminds me of Europe," said Rysankova, who first lived in North Carolina before coming to the Ocean State.

Rysankova began work at Riverview Healthcare Community in Coventry as a CNA (certified nursing assistant). She lacked the nursing license to practice as an RN (registered nurse) until the director of nurses at Riverview steered her to a program specifically geared to help foreign health care professionals. The Commission on Graduates of Foreign Nursing Schools is

a globally recognized non-profit organization that assists foreign health care professionals with job placement, advancement and licensure in the United States.

The commission helped Rysankova with all the necessary research and maneuvering to get her started on pursuing her license here in the United States. Rysankova was happy to learn that she was only one class shy of qualifying to take her nursing boards in New York to obtain her license.

Rysankova contacted several local nursing programs to earn her needed credits. She was denied admission by all of them. Enter Rhode Island College and Maureen Newman, associate professor of nursing. RIC offered Rysankova the opportunity to take the necessary class, Psychiatric Nursing, to be eligible to take her nursing boards.

"The language barrier was probably the hardest thing to overcome as well as studying when you work a full-time job," said Rysankova with a smile. "I was fortunate to get through it."

Rysankova's perseverance paid off — she earned an A in the class.

She credits a lot of supportive people, especially at the College. "I had a wonderful experience at Rhode Island College," said Rysankova. "I can't say enough about the people here, especially Professor Newman — her help and



RN CANDIDATE: Maureen Newman (left), RIC nursing professor, confers with Kristina Rysankova, who, with Newman's help, is now eligible to become a registered nurse in the U.S. after emigrating from Slovakia.

encouragement really pushed me to succeed."

Now, Rysankova has completed the necessary schooling to qualify to take her boards. Currently, she is juggling her time between studying and continuing her full-time schedule at Riverview. For now, she plans on staying at Riverview as an RN once she passes her exam. In the long term, she wants to continue in geriatric nursing.

"I especially enjoy working with the elderly," said Rysankova. "My grandparents were wonderful to me and helped raise me; they definitely inspired me to work in this area of

nursing."

And does Rysankova see further education in her future?

"Professor Newman keeps telling me to pursue my master's," says Rysankova. "It is definitely a possibility in the future, although right now, I am just focusing on passing my boards."

And staying in Rhode Island?

"That is definite. I love the people here and I love my job," she said. "I love caring for people and how it makes me feel good inside. I also can't see myself leaving Riverview for a long time. I love my patients just too much."

Full slate of R.I. Writing Project programs at RIC this summer

Teachers and students alike will find lots of learning opportunities at RIC this summer, when the Rhode Island Writing Project will offer four teacher institutes — including a new Literacy Coaches' seminar for K-8 teachers — and special programs to encourage and develop young writers.

"Every year teachers tell us how much the institutes mean to them," said Marjorie Roemer, director of the project and professor of English at RIC. "They say that their own joy in writing has been rekindled. And every year we feel enriched by the wonderful ideas and energy of a cadre of 100 new Rhode Island Writing Project fellows."

This year's offerings include:

• **Literacy Coaches' Institute**, a training program developed in conjunction with RIC's Feinstein School of Education and Human Development. Participants will share experiences, examine case studies, and engage in role-play and reflection to refine their understanding of literacy pedagogy and coaching. The institute will focus on literacy coaches as learners, facilitators, and supporters of effective classroom instruction in reading, speaking, listening and writing. Classes will be held Aug. 7-10, and Aug. 14-17. Four follow-up sessions will also be required. Four graduate credits are available, at a

cost of \$795.

• **Summer Invitational Institute on Writing and Critical Literacy**, a unified research group and writer's community that explores applied and theoretical issues in teaching writing and critical literacy. It is for teachers of all disciplines and levels. Classes will meet four days a week from June 27-July 27. Six credits are available, at a cost of \$450.

• **Planning for Change**, an institute offering participants the luxury of time to research a topic of their choice and to develop a plan of implementation, is in its fifth year. The program features guest speakers and discussions of practices, journaling, research and writing. Planning for Change will take place from July 17-27. Three graduate credits are available, at a cost of \$250.

• **Literature Institute for Teachers**, a model of an interactive classroom where reading and writing are mutually supportive and reading is a collaborative activity. The classes are from July 5-14 (four days a week). Three credits are available, at a cost of \$250.

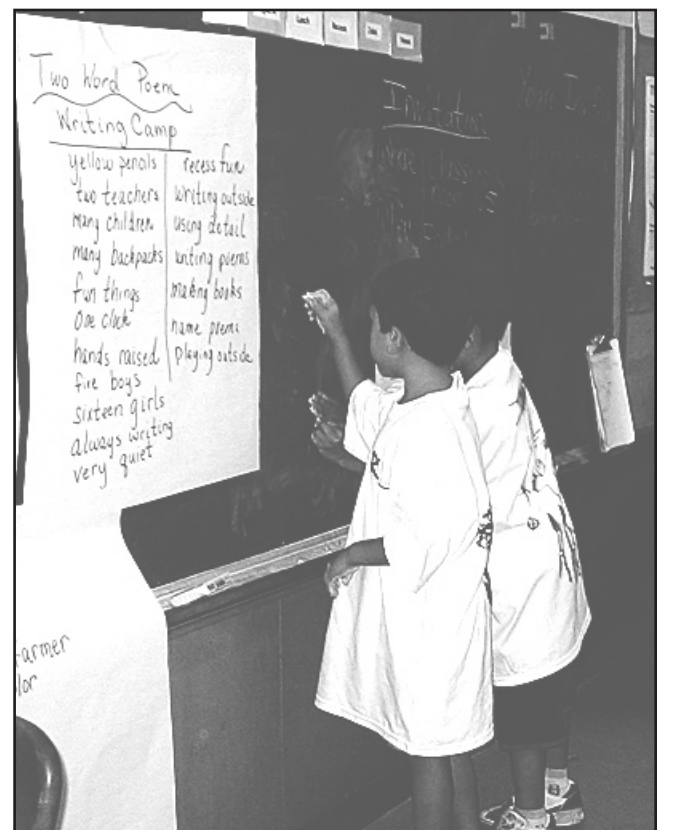
• **Summer Institute for Young Writers**, five concurrent young writers' programs — organized by grade — giving K-12 students an opportunity to learn about the craft of writing by actively participating

in all aspects of the process. This institute will be held July 10-21. Tuition is \$175.

• **New Approaches to Reading and Writing in the Content Areas**, a grant-funded program for teams of high school and middle school teachers from North Providence and Woonsocket. This initiative provides educators with strategies to improve students' reading and writing in the content areas. Classes are July 17-28 with follow-up meetings in the fall. Six graduate credits are available at a cost of \$150. A stipend is also available.

The Rhode Island Writing Project works to improve the teaching and learning of writing. Since 1985, it has trained over a thousand educators in the state, with a goal of bringing new motivation, ideas and techniques to the classroom.

The project also conducts an annual spring conference, mentoring program, teacher research courses, writing groups, in-service work-



BOARD MEETING: Two authors-in-training work at the chalkboard during a Summer Institute for Young Writers held last July.

shops and provides assistance to the state education dept. with the New England Common Assessment Program (NECAP).

The organization is one of 185 National Writing Project sites around the country dedicated to strengthening literacy instruction.

For registration or information, contact the Rhode Island Writing Project office at 401-456-8668.

RHODE ISLAND COLLEGE

2006 Spring Celebration of the Arts

PRESENTS

STRAVINSKY'S L'HISTOIRE DU SOLDAT



RHODE ISLAND COLLEGE CHAMBER PLAYERS

Friday, April 21, 2006

8:00 p.m.

Sapinsley Hall in the Nazarian Center

Edward Markward, CONDUCTOR

P. William Hutchinson, DIRECTOR

Michael Bolger, CHOREOGRAPHER

Princess: Eva Marie Pacheco

Soldier: Michael Truppi

Devil: Jennifer Swain

Narrator: William Jones

7:30 p.m.

Pre-Concert Lecture by Naum Panovsky

General Admission \$10

Seniors and Non-RIC Students \$5

RIC Students Free

**Tickets available at the Box Office in Roberts Hall at
(401) 456-8144**

Sponsored by the Performing and Fine Arts Commission in
cooperation with the Dean of the Faculty of Arts and Sciences
and the Department of Music, Theatre, and Dance

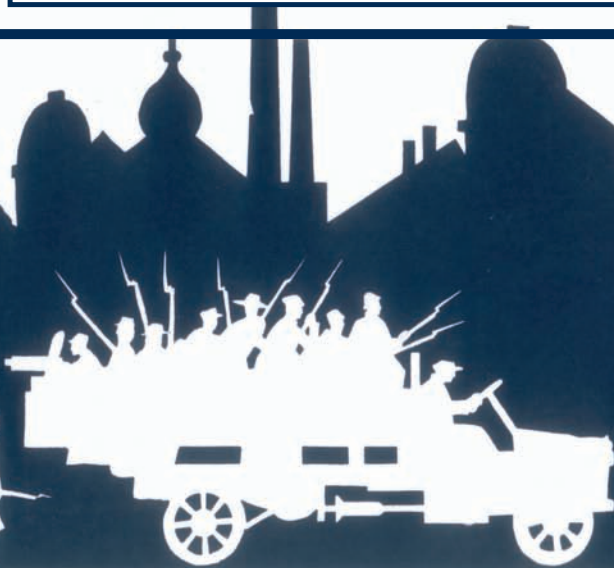


Image by Butterworth Marionettes