

# WHAT'S NEWS @ Rhode Island College

Established in 1980 Circulation over 52,000

## 2007 Honor Roll

### 6 Alumni Award winners, 30 Honor Roll recipients to be feted May 10

By Ellie O'Neill

Director of Alumni Affairs

*Honoring our distinguished alumni is an annual event that serves to showcase both the large number of accomplished leaders the College has produced, and the equally wide range of fields in which they received their degrees. In 2007, Alumnus of the Year Joe Murphy heads a list of Alumni Award winners that also includes Deborah Johnson (Alumni Staff Award), Marie Fraley (Alumni Service Award), Mark Stenning (Willard Achievement Award), Michael Browner (Young Alumni Award) and Teresa Coffman (Alumni Faculty Award).*

*These award winners, along with 30 Honor Roll inductees, will be recognized at the Alumni Awards Dinner on May 10 in the Donovan Dining Center.*

#### 2007 Alumnus of the Year

**Joseph P. Murphy III '89, '02, MPAC '07**

*Criteria: Graduate of the College, continuing interest in the College and Alumni Association as represented by outstanding service, and/or by impressive financial contribution.*

Rhode Island College alumni serve the College and their communities in a variety of ways, and none more so than Joe Murphy. A recipient of three Rhode Island College degrees, Joe often works behind the scenes on activities that date back to his undergraduate days as a management major.

His most recent efforts, in collaboration with the family, colleagues and friends of the late Michael J. (The Doc) Gonsalves '86, have resulted in the establishment of an endowment fund in Gonsalves' name. Joe also lends his leadership and financial skills in organizing an annual golf tournament that benefits the Gonsalves Fund.

Joe serves as president of the Epsilon chapter of Kappa Delta Phi, and organizes events throughout the year to support social connections and philanthropic efforts.

He earned a second degree in accounting in 2002, and in January, earned a master in professional accountancy – all while holding down a full-time job and being dad to two small children.

#### 2007 Alumni Staff Award

**Deborah E. Johnson '80, MA '94, Associate Director of Admissions**

*Criteria: Need not be a graduate of the College, but shall be employed by the College and have made a unique contribution to the College (development of a new program, wide community recognition of quality of service to the community or campus).*

Since 1989, Deborah Johnson has been an important member of the Admissions Office staff and has served the College in a variety of ways, promoting its mission and guiding future students to make good academic choices. In her current role as associate director, Deborah cultivates and promotes the development of professional relationships with secondary school officials. She has also devoted her considerable talent to coordinating multicultural recruitment programs.

**Continued on page 9**



Joseph P. Murphy III '89, '02, MPAC '07  
2007 Alumnus of the Year



Deborah E. Johnson '80, MA '94  
2007 Alumni Staff Award



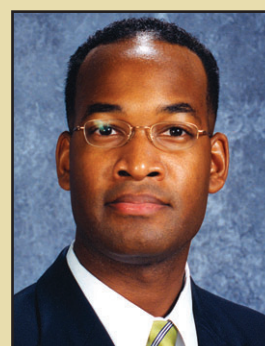
Marie R. Fraley  
2007 Alumni Service Award



Mark Stenning '78  
2007 Charles B. Willard  
Achievement Award



Teresa Coffman  
2007 Alumni Faculty Award



Michael N. Browner, Jr. '98, M '04  
2007 Young Alumni Award



**WHEELS OF CHANGE:** Winter has turned to spring, and on the RIC campus, students find the outdoors a great place to study.



# Wn Quotes...

**“We are honored and excited to affiliate now with the Center for Public Policy and to connect our work with other community partnerships and collaborations addressing important public issues in our state.”**  
– Marjorie Roemer, director of the Rhode Island Writing Project (RIWP) at RIC. [P 8]

**“This is not a simulation exercise, the students will be working with real dollars.”**  
– Jeffrey Blais, RIC associate professor of economics, on a student managed investment fund and course created with a \$100,000 donation to the College from a 1989 grad who wants to remain anonymous. Returns on the investments will be used for educational programs and faculty development in the School of Management’s economics and finance dept. [P 3]

**“It was a great season. I am so proud of the 14 guys in that locker room and the six seniors. They have established RIC basketball at a championship level.”**  
– RIC men’s basketball coach Bob Walsh whose Anchormen reached the Elite Eight in the NCAA Div. III tournament and won a team-record 27 games. [P 7]

*This regular feature of What’s News looks at the links between the world and Rhode Island College. The story below was written by **Christopher A. Souza**, a 2006 RIC grad with a bachelor’s degree in secondary education (anthropology).*

In February, I traveled to Jamaica for a week-long visit with my friend and fellow RIC alum Catherine Malaika Alexander ’04, a Peace Corps volunteer. The Peace Corps affords its volunteers the opportunity to work in third-world societies across the globe, facing issues of education and culture at a grassroots level, while gaining a cross-cultural experience.

Upon arriving in Inverness, I got to see Malaika’s home, neighbors and friend, Craig Finegan. Craig has faced persecution from the community and his family for failing to live up to the socially constructed gender roles as he helps Malaika with domestic tasks. He has been a tremendous support for Malaika.

Malaika and I studied culture change together at RIC in 2003, and we shared the values of cultural relativism. I wondered what could be done to improve Jamaican society. Two problems related to politics in Jamaica are education and the treatment of indigenous people. Literacy is very low and the government uses a minimalist model in approaching education, which has far-reaching implications. Meanwhile, the indigenous population is mostly isolated and not afforded the legitimacy to claim enough ownership of Jamaica to address many of its problems. Interestingly, there is a historical Rhode Island connection with the indigenous population through the Trans-Atlantic Slave Trade.

Malaika works in many roles at an elementary school in Inverness, in the Parish of St. Ann, south of Montego Bay. While visiting her school, I noticed that there typically are no less than two grades in a classroom and each is divided by an incomplete wall. The computer lab is non-functioning because there are no landlines going to the school. Teachers are tired from daily struggle. Only Malaika and the school principal extend their workday. Malaika has secured funding for a multi-media projector, and is seeking funding for a library and additional support for the school as part of her volunteer service.

Considering the current state of Jamaican education, I sought something to build upon. In some schools students are fed well-balanced meals at lunch, which is a prescription for success. Many parents, however, place little value on education. Moreover, many students suffer from sexual, physical, psychological and emotional abuse.

Another Peace Corps volunteer argued that one of the problems for Jamaica is America. The promise of the American Dream is fed to Jamaicans through media outlets, such as Fox News. Consequently, Jamaicans aspire, at least subconsciously, to be like Americans and emigrate, leaving a huge “brain drain.”

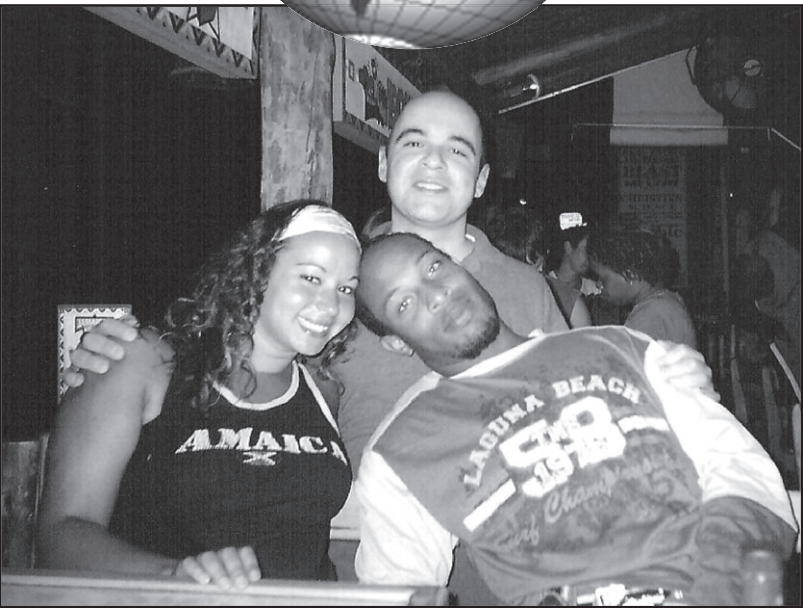
Jamaica is also an example of the injustice done by foreigners transitioning a society to a tourist-based economy and society. The result is a society based primarily on customer service, and lacking industry, manufacturing and technology. People aspire to keep tourism going by participating in it in some capacity – waitstaff, custodial staff, drivers, counter help, etc. Meanwhile, it is Americans, British and other Europeans who profit by owning the resorts. So for those who say tourism is good for these types of societies, I would suggest looking beyond the resort.

There seems to be little initiative for real Jamaican reform. There is great disparity between classes of

people. HIV is spreading rapidly. National priorities are troubling. In 2003, Prime Minister P.J. Patterson stated that the quality of life for Jamaicans is far better since “man have more gal [women] than before.” This has several social, political and cultural implications. The obvious one is that women are property. There is, however, great resilience among many Jamaicans, and you frequently find people smiling and conducting their lives in spite of the challenges.

I remain grateful to Malaika, her friend Craig, and Malaika’s extended Peace Corps family, for sharing their experiences and hospitality. Also, I am grateful for the insights of Malaika’s parents, Jim and Judy Alexander, who are former Peace Corps volunteers.

In closing, I plan to return to Jamaica with much curiosity. Additional research and meeting Jamaicans of varied backgrounds will be necessary to gain a comprehensive understanding of the country.



JAMAICA JOURNEY: Chris Souza ’06 (rear) and friends Malaika Alexander ’04 and Craig Finegan enjoy time together during Souza’s visit to Jamaica in February.

## WHAT’S NEWS @ Rhode Island College

**Editor:** Jane E. Fusco  
**Managing Editor:** Rob Martin  
**Design Manager:** Jennifer Twining ’92  
**Information Aide:** Pauline McCartney  
**Photographer:** Gene St. Pierre ’77  
**Graphic Designers:**  
Charles Allsworth ’82, M ’86  
Lance Gorton ’09  
Paul J. Silva ’03  
**Copy Editor:** Ray Ragosta

**Staff Writers:**  
Ericka Atwell ’08  
Gita Brown  
Robert P. Masse ’08  
Kerry McCartney  
Anthony Rebello ’07  
Katharine Ricci ’07  
Alison Strandberg

*What’s News at Rhode Island College* (USPS 681-650) is published by:  
Rhode Island College  
Office of News and Public Relations  
600 Mt. Pleasant Ave.  
Providence, RI 02908

It is published monthly from September to June. Periodicals postage paid at Providence, RI.

**Printing:** TCI Press, Seekonk, Mass.

**POSTMASTER:**  
**Send address changes to:**  
*What’s News at Rhode Island College*  
Office of News and Public Relations,  
600 Mt. Pleasant Ave.  
Providence, RI 02908

**Deadline:**  
Deadline for submission of copy and photos is noon the Thursday two weeks before publication date.  
Telephone: 401-456-8090  
Fax: 401-456-8887



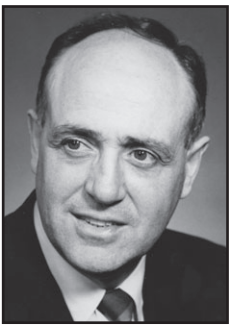
**The next issue of  
What’s News  
will be May 7, 2007**

**Story ideas are welcome.  
Call 401-456-8090  
or email [rmartin@ric.edu](mailto:rmartin@ric.edu).**



## In Memoriam –

### Ernest L. Overbey, retired vice president for business affairs



ERNEST L. OVERBEY

Ernest L. Overbey, 89, RIC vice president emeritus for business affairs, died on Feb. 7 in Lady Lake, Fla.

Overbey came to Rhode Island College in 1957 as business manager and treasurer. He was named vice president for business affairs and treasurer in 1966, a title he held until his retirement in 1977. He was the first

to hold that office – now known as vice president for administration and finance – at the vice presidential level.

While at RIC, Overbey’s responsibilities included the maintenance of all facilities and the College’s personnel and budget functions. Overbey was also the chairman of the Athletic Committee as well as the treasurer for both the RIC Foundation and the Kappa Delta Phi Alumni Association.

In a letter dated May 22, 1978 announcing Overbey’s retirement, then RIC President David Sweet noted that Overbey was responsible for the construction of over 15 buildings at the Mount Pleasant Campus. Sweet also wrote, “At all times, he has carried out these serious responsibilities with diligence, competence, patience and a sense of humor that has earned him the respect of his colleagues and associates.”

Overbey graduated from Bowling Green College of Commerce in 1942 with a bachelor of science degree in accounting, with minors in business administration and economics. In 1946, he was appointed assistant to the business administrator at the University of Delaware, and in 1951 promoted to executive assistant business administrator.

Overbey served in the U.S. Marine Corps.

He is survived by his wife Billie D. Overbey of Lady Lake, Fla., daughter Sandra Mueller of Westerly, R.I., three grandchildren and five great-grandchildren.

### Rita Couture, retired RIC French teacher



RITA COUTURE

Rita L. Couture of Central Falls, associate professor emerita of modern languages and secondary education, died March 9 at Memorial Hospital of Rhode Island in Pawtucket. She was 89.

Couture taught French at Rhode Island College for 28 years, retiring in 1988. That year, in a letter announcing her appointment to emerita rank, then RIC President Carol Guardo praised

Couture for her “championing of the role of foreign languages in liberal education for life experiences and your participation in and contribution to the professional and social groups in which your linguistic ability and training have proved of great and lasting value.”

Also in 1988, she received a plaque recognizing her service to the modern languages dept., awarded on behalf of the many students of French that Couture taught.

Before coming to RIC, Couture worked for the Massachusetts Council for Public Schools (Modern Language Project), taught at Worcester State College, Bridgewater State College, and Okinawa University (Dept. of Defense), and was a research analyst at the Dept. of Defense in Washington, D.C.

She was a graduate of Pembroke College (Brown University) and Middlebury College, and received certificates from the Universite de Grenoble in France and the Universite de Paris. She was a graduate of Central Falls High School.

She is survived by three sisters, a sister-in-law, and several nieces and nephews.

Contributions in Couture’s memory can be made to the American Heart Association, 20 Speen Street, Framingham, MA 01701-4688.

## COMMUNICATIONS DAY – MARCH 1



MIKE MONTECALVO

**MAKING NEWS:** Mike Montecalvo (left), WPRI 12/Fox News anchor, gives the keynote address as part of Communications Day on March 1. His presentation included news video clips and insights into the broadcasting field. Also on hand for the day was Raina Smith ‘97 (right), WPRO-AM talk radio host, and former reporter at WPRO-12/Fox News, who participated in a panel discussion and met with students at RIC radio station WXIN to offer her advice on breaking into the broadcast field. Lambda Pi Eta Communications Honor Society and the RIC Communications Club sponsored the event, which also featured over two dozen professionals who told students about careers in mass media, public relations, speech and hearing, graphics, politics, law, and public service.



RAINA SMITH

## RIC gets \$100,000 anonymous donation for a student-managed investment fund

***Students will invest in stocks and bonds and use the gains for faculty development programs. It is the first such program for a R.I. state college.***

A 1989 graduate of Rhode Island College, who wants to remain anonymous, has donated \$100,000 to the College to establish a student managed investment fund and course that will ultimately benefit RIC’s School of Management. The donation was made in December 2006.

Returns on the investments will be used for educational programs and faculty development in the School of Management’s Department of Economics and Finance.

Student fund managers will take a course that blends theory with the process of portfolio management. Students will learn short- and long-term investment strategies, asset allocation and portfolio rebalancing. They will be expected to manage domestic and foreign securities and use derivative instruments for hedging portfolio risks.

“This is not a simulation exercise, the students will be working with real dollars,” said Jeffrey Blais, RIC associate professor

of economics. The fund will be managed by a team of four to six students, who will follow strict by-laws of fund management.

Abbas Kazemi, associate professor of finance at the College, said that the course would give students enough hands-on experience to better position them for the job market. Kazemi will be instructing the course this fall.

Initially the fund will be made up of about 65 percent U.S. equities, 20 percent bonds and the remainder in international stocks and derivatives. The income earned on the fund will be used for memberships in professional organizations, research materials, speaker fees and program enhancements, said Blais.

“One of the key components of any education is the opportunity to develop skills based on practical, real-world experiences. When the student becomes a junior colleague, it enriches the curriculum for everyone,” said Peg Brown, executive director of the RIC Foundation.

Junior and senior finance majors will be selected by the faculty for participation in the program. Applicants for the fall program are now being accepted.



James O. Prochaska addresses a large audience in Clarke Science on the “Transtheoretical Model as Applied to Drug Addiction” in a March event sponsored by the Chemical Dependency/Addiction Studies program.



# NEWS FROM THE Foundation & Alumni Offices



BY ELLIE O'NEILL

Director,  
Alumni Affairs



This edition of *What's News* features our 2007 Alumni Award and Honor Roll recipients. You will soon receive the awards invitation via USPS. Reservations for the dinner can be made by calling the alumni office at 456-8086. The price is \$35. The alumni office hosts many events during the year; the Alumni Awards event is particularly special because it gives us the opportunity to showcase alumni in so many different professions.

On Saturday, April 14 we are hosting a luncheon for children/grandchildren of alumni who have been accepted to the College for fall 2007. This event is held prior to the Admissions event for accepted students. If you are the parent or grandparent of a student who has been accepted to the College and has not received an invitation, please call us.

On May 1, the Alumni Association and RIC President John Nazarian are hosting the 7th annual spring breakfast at the President's house for RIC alumni who are also Leadership Rhode Island alums.

REUNION INFORMATION:

- May 18-19 *Class of 1957*  
*(golden anniversary celebration)*
- May 30 *Class of 1952 (55th reunion)*
- May 31 *Class of 1942 (65th reunion)*
- June 4 *Class of 1947 (60th reunion)*
- June 5 *Classes 1924-1940*

RIC ON THE ROAD — FLORIDA



At an Alumni Association party following a March 9 Red Sox game in Clearwater are (from left) Frances Lannon Mazzei '71, Peter Mazzei M '76, Anne O'Rourke Cloutier '77 and Paul Cloutier '73. The Red Sox beat the Phillies 11-10, helped along by the RIC cheering squad.



Recently relocated to Florida are (from left) George Hreczuck and Sandra Chaharyn Hreczuck '64, who are joined by Carol Ravenelle DeVincenzo '64 and William DeVincenzo '66. Sandra and Carol are delighted to be in the same state again.



Alumni from 1964-92 gather at Joe's Crab Shack in Clearwater following a Red Sox game. Standing (from left) are Mike Romoli '66, William Dalton '66, Michelle Huot Damiano '88, Suzanne Monique Lauzon '67, John Lauzon and Suzette Trento '96. Seated (from left) are Kim Kennedy '92, Joanne Harvith and Elaine Hurley Rimel '69.

## RIC After Five... *a networking event for alumni*

On February 28, 50 alumni representing the classes of 1979 through 2006 gathered for a RIC After Five reception at the Napa Valley Grill in downtown Providence. After a brief icebreaker, attendees were given the challenge to meet and talk with someone they had not met before. An easy task knowing they had least had one thing in common: a degree from Rhode Island College. At the end of the night, the most common question was "When will the next event be held?" With that enthusiastic response, plans are in the works for a summer networking event to be held in August at Z Bar and Grille, hosted by restaurant owner and RIC graduate, Kevin Killoran '85.



From left, Jennifer LeBlanc '02, Carrie Coren '85, David Cournoyer '85, Wing Chan '06.



From left, Jessica Tempest '02, Jennifer DeThomas '02, Paul Heatherton '02, Rebekah Charron '06, Carly Simpson '03.



From left, Shelia Harrington '94, Shannon Giorgio '98, Kelly LaChance-Guertin '02.



# RIC alum’s injury sparks successful fitness business

BY KATHARINE RICCI '07  
Staff Writer



CHRISTINE KING

The Fourth of July marks a time for summer celebrations. But for Christine

King ‘93, the holiday symbolizes a meaningful redirection in her life.

As a teenager, King participated in beauty pageants and won two prestigious crowns, Miss Rhode Island National Teenager in 1983 and Miss Rhode Island Teen USA in 1985. After that, she lost interest

in pageants until 1996, when she became interested in fitness. King, a video production company vice president at the time, decided to enter the Miss Fitness USA contest. She never made it.

On the Fourth of July weekend that year, King was riding on the back of a jet ski with a friend when they collided with a massive wave, sending King 20 feet into the air. When she landed, she was still sitting and gripping the jet ski. The contact crushed her lowest vertebrae, paralyzing King from the waist down.

She was six months into training for the pageant at the time.

“The doctor told my husband that being fit is what saved my life,” said King, who had also danced for a time with the New England Ballet Company. “The stronger you are, the stronger and more dense your bones are. That’s what kept me from crushing more vertebrae” – and from crushing her spirit.

King had read many books on self-development and business improvement, and because of these books, she realized her life was changing, but there was no need to break down.

After her accident, doctors came to her hospital room daily and asked her if she felt even the slightest sensation as they touched her

toes. It took two weeks for her to feel anything. King said that after she stood using a walker for the first time, which lasted a few seconds, she felt like she had run a marathon. She went from a walker to a cane in a year, with the help and dedication of her then boyfriend and now husband, Kevin King. Kevin was her personal trainer before the accident. He motivated her to keep rebuilding her strength through exercise. She now walks with a limp unless she wears special tennis shoes.

Since being fit was what saved her life, she wanted to help everyone get in shape, and decided to change her career to meet that goal.

King noticed an outstanding need for members of private golf and country clubs to learn more about strength training and fitness. She and her husband started a company called Get Fit, Inc. Instead of having a storefront, they visited the members at their clubs in Rhode Island.

A year later, they relocated Get Fit, Inc. to Delray Beach, Florida, so King would no longer fear slipping on winter ice and reinjuring her spine.

Fast forward 10 years. King now owns a studio in Delray Beach, operates private training programs at 10 country clubs and communities, conducts a free weekly teleconference she calls “fit chats,” writes a fitness blog and has released her first fitness video available on her website at [www.lifeonlybetter.com](http://www.lifeonlybetter.com). She also plans to write a book.

The Delray Beach Chamber of Commerce named her the 2006 Small Business Person of the Year. The *Sun-Sentinel*, a Palm Beach newspaper, awarded King their Excalibur award for excellence in small business in January, placing her among the ranks of people she admires like Wayne Huizenga, the founder of Blockbuster Video and owner of the Miami Dolphins.

Get Fit, Inc. employs 28 staff members and works with 300 clients. King said her 2,500 square foot spotlessly clean studio (not gym) caters to people who really want to get fit, but need a helping hand. Clients always work with a trainer, who guides them through sessions

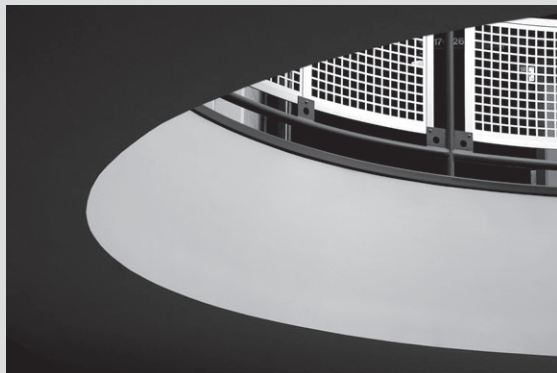
that last a half hour and focus on strength and cardiovascular training, as well as flexibility. She credits her communications degree from RIC with giving her the confidence to market and build her business.

“Having a business here in South Florida, I have a need to get out there and tell people what we do,” she said. “The ability to speak publicly really lends a lot to selling yourself and what you believe in. A communications degree is so multifaceted and you can use it in many ways.”

King says her proudest accomplishment is helping people realize they can do what they never thought possible – get fit.

“I always hear ‘I can’t, I can’t,’” she said. “It’s not that they can’t, it’s that they don’t know how. The changes they see are so fulfilling.”

Changes that can be life saving, like they were for Christine King.



## Where is it?

Do you know where on campus the close-up shown in this photo is located?

Turn to page 17 to find out.



## BRICK CAMPAIGN RHODE ISLAND COLLEGE

Pay tribute with the gift of a brick in the Rhode Island College Legacy Walk. Buy a brick in honor or memory of someone special. We will notify the chosen person or their family of your thoughtful gift. Bricks @ \$150 each are 4” x 8” and Pavers @ \$300 each are 8” x 8.”

Order online at [www.ric.edu](http://www.ric.edu) or contact Nancy Hoogasian at 401-456-8827.

You and those you honor will receive a special Legacy Walk Certificate of Appreciation.

Partial proceeds benefit programs of the Alumni Association and Intercollegiate Athletics.

### ORDER FORM

Yes! I want to order: \_\_\_\_ Brick(s) @ \$150 each \_\_\_\_ Paver(s) @ \$300 each

Size dimensions are: Brick 4” x 8” Paver 8” x 8”

Please check one. I want the charitable gift portion (87%) of the purchase price to benefit:

☐ Alumni Association ☐ Athletics

☐ Check for \$ \_\_\_\_ enclosed, made payable to: Alumni Association or RIC Athletics

☐ I prefer to charge: \_\_\_\_ MasterCard \_\_\_\_ VISA

CARD # EXP DATE

SIGNATURE

PHONE EMAIL

NAME: CLASS:

ADDRESS:

CITY: STATE: ZIP:

Please print information as you want it to appear. One character, symbol per block and leave an empty block for space between words. We recommend only one name or family name per brick or paver. Please indicate your class year. Example: John Jones '98, All-American. Clip and send this form to RIC Brick Campaign, Kauffman Center, 600 Mt. Pleasant Avenue, Providence, RI 02908.

BRICK - 3 lines, 18 characters per line including spaces and punctuation


PAVER - 6 lines, 18 characters per line including spaces and punctuation


Circle one: This BRICK/PAVER is ☐ In honor of ☐ In memory of

☐ Please send gift card to:

NAME

ADDRESS

CITY STATE ZIP

Please note: If you would like to purchase multiple bricks and/or pavers, please photocopy this form. RIC reserves the right to edit messages or punctuation to comply with engraving guidelines. If you have questions, please call 401-456-8827. Thank you!



# RIC Athletic News



**BY DONALD E. TENCHER**  
*Director of Athletics*

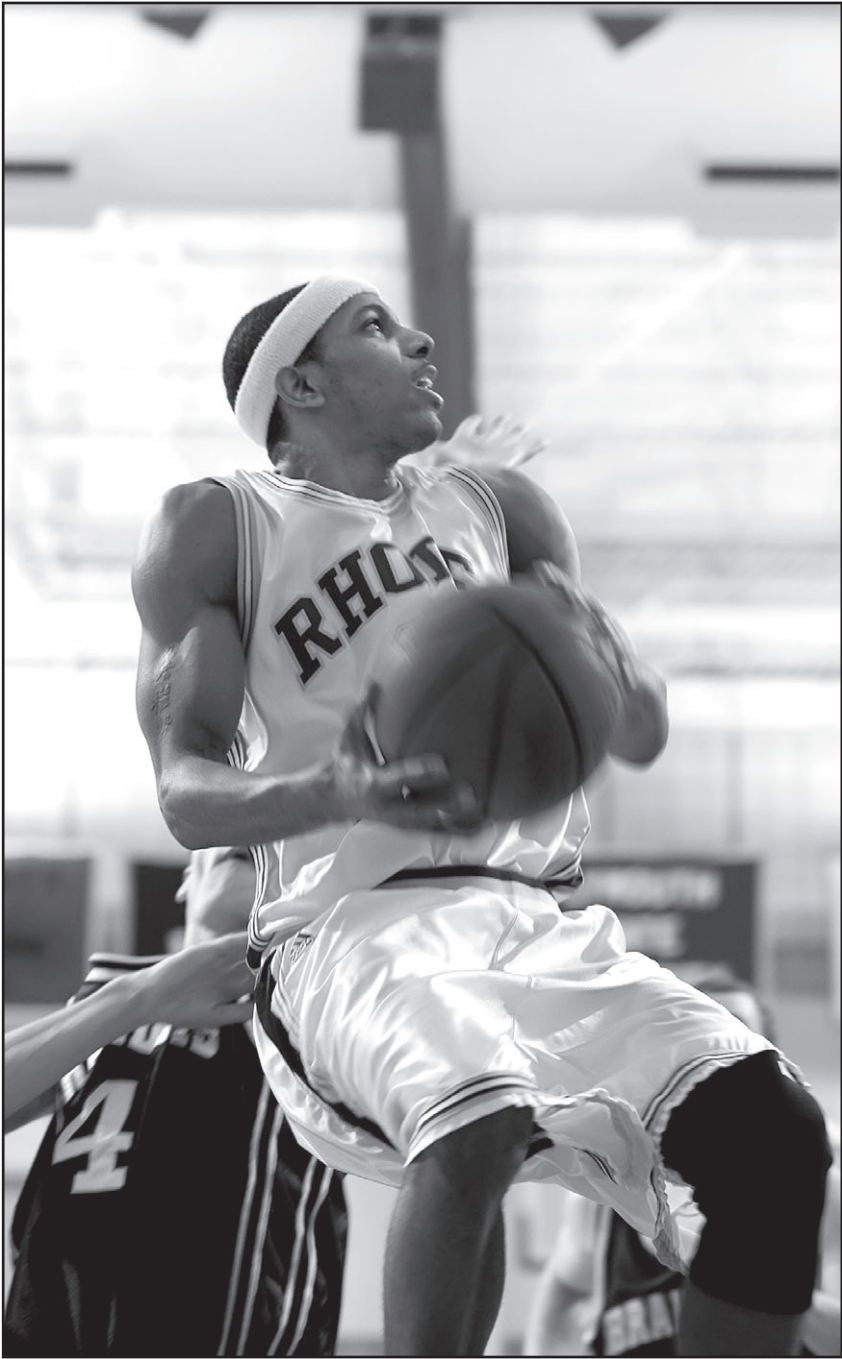
Since the last issue of *What's News* we lost one of our athletic legends with the passing of Donald Hickey '62. Donald will always be known for being the consummate team player and I am extremely grateful for everything Don did in support of our athletic program over the past 12 years. We'll miss Donald and our deepest sympathies go out to his wife Lynne '67 and family. (See memoriam on page 7.)

• I also want to extend my deepest sympathy to staff member Anthony Rainone '73, who lost his wife Kathy '73 after a courageous battle with cancer, and wrestling team captain Ryan DeSisto for the tragic loss of his sister. Tony and Ryan, our thoughts and prayers are with you and your families during this difficult time.

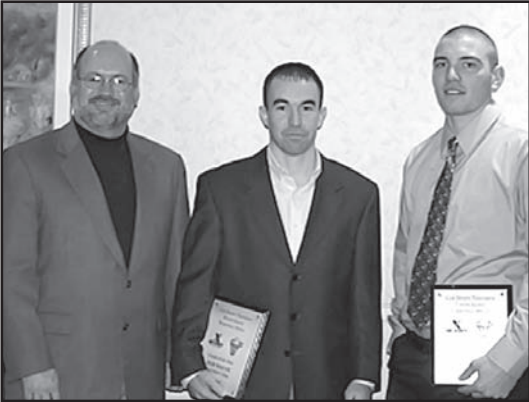
- The softball team is currently ranked 21st in the country and just returned from a successful southern trip. Congratulations to senior Nicole Reilly as she continues to establish all-time pitching records for the RIC program.
- The baseball team is also off to a successful start led by the dean of Rhode Island's collegiate coaches, Jay Grenier '81.
- The women's basketball team ended the season in fine fashion as they upset the number one seed in the ECAC Tournament and lost a heartbreaker in the semifinals. Well done, ladies and coaching staff.
- I am extremely thankful to all the members of our campus community and our alumni who came out to support the men's basketball team in their quest for a national championship. Over 2,000 people attended the first rounds of the NAAs and hundreds of people traveled to Amherst for the Sweet 16 and Elite Eight games. Thanks again to all who supported these young men, not only in the playoffs, but also throughout the year.

- Congratulations to Coach Bob Walsh on being selected as the Conference Coach of the Year and to student-athletes Kinsey Durgin and Bobby Bailey for being selected to all-conference teams. Also, congratulations to Kari Geisler and Josalee Danieli on their selections to the All-Conference teams.
- Congratulations to junior Mike Bonora who earned All-American honors at the NCAA Div. III Wrestling Championships. Mike was the 141 lb. weight class champion and was named the Most Outstanding Wrestler of the New England Championships.
- Finally, the highest honors student-athletes at Rhode Island College can receive are the John E. Hethermen and Helen M. Murphy Award. This year's winners are men's basketball standout Kinsey Durgin and former tennis standout Elizabeth Barrette. Congratulations to each of these outstanding scholar-athletes. More will be featured about them in a future issue.

## Men's basketball rolls into NCAA Elite Eight



BOBBY BAILEY



John Wolfe from Cox Sports Television presents head men's basketball coach Bob Walsh (center) with the Rhode Island Basketball Media Coach of the Year Award, and senior guard Kinsey Durgin (right) with the Player of the Year Award at the annual Cox Sports Television R.I. Basketball Media Awards Luncheon on March 26 at the Radisson Airport Hotel in Warwick.

**By Scott Gibbons**  
*Sports Information Director*

What a men's basketball season! After winning the Little East Conference Men's Basketball Tournament Championship at The Murray Center on Feb. 24, Rhode Island College headed to the NCAA Div. III Tournament for the first time in 28 years.

RIC was one of 11 national sites chosen to host first- and second-round action in the 59-team tournament. The Anchormen would square off against Coast Guard Academy, while Brandeis would battle Trinity, with the winners to meet the following evening.

RIC had beaten Coast Guard in December, but this was a whole new ballgame. The teams tipped off on March 2 in front of a capacity crowd at The Murray Center. In addition to the hundreds of RIC rooters, Coast Guard brought many of its own corps to cheer on their team. Cox Sports Television was on hand to broadcast the game live and the Bears and Anchormen did not disappoint.

In an ironic twist, both Coast Guard and Rhode Island College last made it to the NCAA tourney in 1979 and played each other. The Bears won that contest, but RIC was not going to be denied in front of its own fans on this night. Senior guard Kinsey Durgin scored a game-high 18 points to lead the Anchormen past CGA, 64-60. Sophomore guard Bobby Bailey posted a double-double with 16 points and a game-high 13 rebounds.

That set up a showdown with Brandeis, which had knocked off Trinity in a come-from-behind victory the night before.

The Judges, who were making their first NCAA tourney appearance in 32 years, gave the Anchormen all they could handle. The Anchormen were rolling in the second stanza and built

an 18-point advantage, but Brandeis buckled down and limited RIC to just three points and no field goals for the remainder of the game.

The Judges eventually closed to within two points and, with just 11 seconds left, fouled senior guard Kamari Williams to put him on the free throw line. The Springfield, Mass. native hit the first shot and Brandeis grabbed the rebound on his next miss. The Anchormen played tenacious defense in the final seconds, as the Judges missed two three-pointers that would have tied the game. The final was 70-67.

RIC was headed to the Sweet 16, quite an achievement for a program that just five years earlier was 1-24.

The Anchormen's next opponent was longtime nemesis Keene State. Undoubtedly, the Owls were anxious to get another crack at RIC, which had defeated them in the Little East Tournament title game just 13 days earlier.

The Anchormen and the Owls headed to Amherst College for the sectional rounds on March 9 and 10.

Keene State and RIC added another chapter to the longtime series, with the Anchormen emerging victorious, 75-73, and headed to the Elite Eight. Late in the game, with the Anchormen up 73-72, senior forward Brian Stanko, who had the flu earlier in the week and hadn't practiced in days, made two free throws to put the Anchormen up, 75-72. With just seconds left, Anchormen coach Bob Walsh elected to foul Keene State All-Little East guard David Sontag and put him on the line. Sontag made his first attempt and missed the next shot on purpose. RIC senior center Anthony Pierlioni grabbed the rebound and time expired. The storybook season continued.

One day later, in a

**Continued next page**





DONALD HICKEY

# In Memoriam – RIC mourns the loss of Donald Hickey '62

Rhode Island College is saddened by the loss of Athletic Hall of Famer Donald Hickey '62, who passed away on Tuesday, Feb. 27 at the age of 68. Hickey was a three-sport standout during his years at RIC. He played four

seasons of basketball and soccer, while playing three seasons of baseball. As a forward in basketball, Hickey was known as a fierce competitor, a brilliant passer and an excellent team player. He received the John E. Hetherman Award in 1962, and was inducted into RIC’s Athletic Hall of Fame in 1999. He earned his master’s degree in education from RIC in 1969. Hickey was a teacher in Providence from 1962-73. He was the assistant principal at Bishop

Hendricken High School from 1973-86, and a state senator from 1977-86. Upon his retirement from teaching, Hickey worked for the State of Rhode Island as the director of the Retirement Board from 1986-90. He is survived by his wife, Lynne '67. Donations can be made in Donald Hickey’s name to the Rhode Island College Foundation.



Front: Rickie Wilson '72, Elbert Hines '75,  
back: Ronald Meeks '73, Reuben Alford '75

# Looking Back...

Here at What’s News, we will feature historical photos from the College’s past. Please go to your scrapbooks and send us photos with as much information as possible. All photos will be handled carefully and returned to sender. Send to: Rhode Island College, Office of News and Public Relations, Kauffman Center, Providence, RI 02908.

GLORY DAYS: With the success of this year’s men’s basketball team, we decided to look back to an earlier golden era on the court. Some of the best RIC men’s basketball teams in school history were in the late 60s and early 70s. Several games from that time were televised and played to standing-room-only crowds. One of the star players back then was Rickie Wilson '72, the College’s first basketball All-American.

## Elite Eight cont.

packed gym, the Anchormen and Amherst met at center court with a date in the NCAA Final Four on the line. RIC had never been this deep in the tournament, but standing in its way was a powerhouse. Though RIC had only three losses all season, one was to the Lord Jeffs, 62-48, back on Jan. 30, when Amherst was ranked number one in the nation.

In the first half, RIC led 16-10 before the Lord Jeffs went on a roll and surged to a 46-34 advantage. Amherst kept up the pressure in the second half, at one point leading 56-44. A resilient Anchormen squad trimmed the lead to three points as sophomore guard Cameron Stewart, Stanko and Williams drained three consecutive threes. After a layup by RIC sophomore guard Tirrell Hill, the Anchormen were still within striking distance, 73-67, with 2:31 left in the game, but Amherst hit their free throws and earned its third final four in the past four seasons with a 81-69 victory.

Just like that, the season was over. It would be the last for Durgin, Pierlioni, Stanko and Williams, along with fellow seniors John Weir and Amde Tegbaru. “It was a great season,” Walsh said. “I am so proud of the 14 guys in that locker room and the six seniors. They have established RIC basketball at a championship level.” Bailey, a Second Team All-Little East and All-Defensive Team selection, was named to the NCAA All-Sectional Team. Rhode Island College finished the year with a 27-4 overall record, establishing a new school record for wins in a season. Durgin was named All-Region by the National Association of Basketball Coaches and by D3hoops.com. Walsh was named the Little East Coach of the Year and was honored, like Durgin, by the R.I. Basketball Media. All the players and coaches have a lot to be proud of, and judging by the hundreds of fans who followed them on this magical journey, they made the College, the City of Providence and the entire state very proud of them.

# 2007 Winter/Spring Athletics Schedule Apr. 9 – May 7

Baseball			
Tues.	Apr. 10	UMass Dartmouth*	3:30 p.m.
Sat.	Apr. 14	at Southern Maine* (DH)	Noon
Mon.	Apr. 16	Elms	3:30 p.m.
Wed.	Apr. 18	Curry	3:30 p.m.
Sat.	Apr. 21	Eastern Connecticut* (DH)	Noon
Tues.	Apr. 24	at Wheaton	3:30 p.m.
Wed.	Apr. 25	Worcester State	4 p.m.
Thurs.	Apr. 26	Framingham State	4 p.m.
Sat.	Apr. 28	at Western Connecticut* (DH)	Noon
Mon.	Apr. 30	Newbury	4 p.m.
Tues.	May 1	at Johnson & Wales	3:30 p.m.
Wed.	May 2	Babson	4 p.m.
Sat.	May 5	at Plymouth State* (DH)	Noon
Softball			
Mon.	Apr. 9	Roger Williams (DH)	4 p.m.
Tues.	Apr. 10	Lasell (DH)	3:30 p.m.
Thurs.	Apr. 12	Salve Regina (DH)	3:30 p.m.
Sat.	Apr. 14	at UMass Boston* (DH)	1 p.m.
Tues.	Apr. 17	UMass Dartmouth* (DH)	3:30 p.m.
Thurs.	Apr. 19	at Westfield State (DH)	3 p.m.
Sat.	Apr. 21	Plymouth State* (DH)	1 p.m.
Tues.	Apr. 24	at Western Connecticut* (DH)	5 p.m.
Thurs.	Apr. 26	at Worcester State (DH)	5 p.m.
Sat.	Apr. 28	Eastern Connecticut* (DH)	1 p.m.
Th.-Su.	May 3-6	Little East Conference Tournament	TBA
Men’s Tennis			
Tues.	Apr. 10	at Western Connecticut*	4 p.m.
Thurs.	Apr. 12	at Becker	4 p.m.
Sat.	Apr. 14	Southern Maine	1 p.m.
Tues.	Apr. 17	at UMass Dartmouth*	3:30 p.m.
Fri.	Apr. 20	Bridgewater State	3 p.m.
Sat.	Apr. 21	at UMass Boston	1 p.m.
Wed.	Apr. 25	at Newbury	3:30 p.m.
Fr.-Sa.	Apr. 27-28	Little East Championships	TBA
Women’s Tennis			
Sun.	Apr. 15	at Nichols	Noon
Fri.	Apr. 20	at Roger Williams with Johnson & Wales	Noon
Women’s Lacrosse			
Mon.	Apr. 9	at Elms	4 p.m.
Thurs.	Apr. 10	at Worcester State	7 p.m.
Thurs.	Apr. 12	at Southern Maine*	4 p.m.
Sat.	Apr. 14	at Plymouth State*	1 p.m.
Mon.	Apr. 16	at Westfield State	4 p.m.
Tues.	Apr. 17	Bridgewater State	6 p.m.
Thurs.	Apr. 19	Nichols	6 p.m.
Sat.	Apr. 21	Western Connecticut*	Noon
Tues.	Apr. 24	Lasell	6 p.m.
Sat.	Apr. 28	Eastern Connecticut*	Noon
Tues.	May 1	LEC Tournament Quarter-Finals	TBA
Thurs.	May 3	LEC Tournament Semi-Finals	TBA
Sat.	May 5	LEC Tournament Finals	TBA
Men’s & Women’s Outdoor Track & Field			
Sat.	Apr. 14	at Wesleyan Invitational	10 a.m.
Sat.	Apr. 21	at Connecticut College Silfen Invitational	10 a.m.
Sat.	Apr. 28	at Alliance Championships (Fitchburg St.)	10 a.m.
Fr.-Sa.	May 4-5	at N.E. Div. III Championships (Springfield)	10 a.m.

Home contests in bold  
\*Little East Conference contest

Log on to [www.ric.edu/athletics](http://www.ric.edu/athletics) for updated schedules and results.



# Full slate of R.I. Writing Project programs at RIC this summer

Teachers and students alike will find lots of learning opportunities at RIC this summer, when the Rhode Island Writing Project (RIWP) will offer four teacher institutes – including a new seminar for Literacy Leadership for K-8 teachers – and special programs to encourage and develop young writers. The courses are available at reduced tuition because they are grant-funded.

“Every year teachers tell us how much the institutes mean to them,” said Marjorie Roemer, director of the project and professor of English at RIC. “They say that their own joy in writing has been rekindled. And every year we feel enriched by the wonderful ideas and energy of a cadre of 100 new Rhode Island Writing Project fellows.”

This year’s offerings:

- **Literacy Leadership Institute**, a training program developed in conjunction with RIC’s Feinstein School of Education and Human Development. Participants will share experiences, examine case studies, and engage in role-play and reflection to refine their understanding of literacy pedagogy and coaching. The institute will focus on teachers as learners, facilitators and supporters of effective classroom instruction in reading, speaking, listening and writing. Classes will be held July 23 to August 2. Four follow-up sessions throughout the year will support implementation of new ideas. The program carries four graduate credits.

- **Summer Invitational Institute on Writing and Critical Literacy**, a research group and writer’s community that explores applied and theoretical issues in teaching writing and critical literacy. This is the core program for the RIWP and it is for teachers of all disciplines and levels. Classes will meet four days a week from June 25 to July 19. The program carries six graduate credits.

- **Planning for Change**, an institute offering participants the luxury of time to research a topic of their choice and to develop a plan of implementation, is in its sixth year. The program features guest speakers and discussions of practices, journaling, research and writing. Planning for Change will take place from July 16-26. The program carries three graduate credits.



SUMMER WRITING: High schoolers from the Summer Institute for Young Writers pose for a picture after reading their selected writing pieces on the last day of camp in 2006.

- **Literature Institute for Teachers**, a model of an interactive classroom where reading and writing are mutually supportive and reading is a collaborative activity. The classes are from June 25 to July 6 (four days a week). It is a three-credit program.

- **Summer Institute for Young Writers**, five concurrent young writers’ programs – organized by grade – giving K-12 students an opportunity to learn about the craft of writing by actively participating in all aspects of the process. This institute will be held July 9-20. Tuition is \$195.

The Rhode Island Writing Project works to improve the teaching and learning of writing. Since 1985, it has trained over a thousand educators in the state, with the goal of bringing new motivation, ideas and techniques to the classroom. In the past year a Title II School Partnership grant has provided RIWP support for schools in Woonsocket and North Providence. A Comprehensive School Reform grant has supported work in both Burrillville and North Providence.

The project also conducts an annual spring conference (see below), mentoring program for new teachers, teacher research courses, writing groups, in-service workshops and provides assistance to the Rhode Island Dept. of Education for the New England Common Assessment Program (NECAP). Several schools in the state have RIWP “embedded institutes” – on-site year-round programs.

The organization is one of over 190 National Writing Project sites around the country dedicated to strengthening literacy instruction.

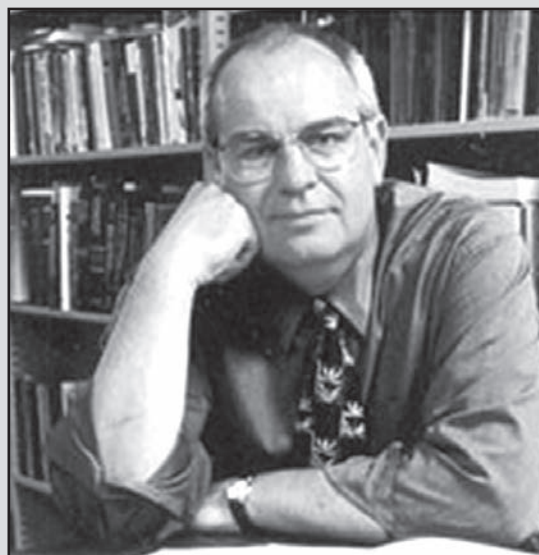
For registration or information, contact the Rhode Island Writing Project office at 401-456-8668 or check the website [www.ric.edu/riwp](http://www.ric.edu/riwp).



## R.I. Writing Project newest affiliate of RI Center for Public Policy

*The Rhode Island Writing Project (RIWP) at Rhode Island College is now an affiliate of RIC’s Center for Public Policy. RIWP offers programs to improve the teaching and learning of writing. In addition to year-round programs to mentor new teachers, the project sponsors summer programs for teachers and children’s writing camps (see accompanying story).*

*“For over twenty years RIWP has had an opportunity to work in schools across the state developing innovative, best practice programs through the ‘teachers teaching teachers’ philosophy that characterizes the 197 Writing Project sites all over the country,” said Marjorie Roemer, director of the Project at RIC. “We are honored and excited to affiliate now with the Center for Public Policy and to connect our work with other community partnerships and collaborations addressing important public issues in our state.”*



## Noted reading expert Richard Allington featured speaker at RIWP conference

Richard Allington, professor of education at the University of Tennessee and past president of the International Reading Association, will be the keynote speaker at the Rhode Island Writing Project’s Annual Spring Conference.

The RIWP event will be held April 28 from 8:30 a.m. to 2:30 p.m. in the RIC Student Union Ballroom.

Designed for elementary-through-college instructors, administrators and preservice teachers, the conference offers a choice of best-practice workshops and the opportunity to exchange ideas with those in the educational field throughout the state. Professional development credits (CEUs) will be available.

Allington has written over 100 research articles and several books, among them, *Classrooms That Work: They Can All Read and Write*, co-authored with Pat Cunningham, and *What Really Matters for Struggling Readers*.

“As these titles suggest, he brings practical, hopeful approaches to literacy instruction and a deep understanding of reading and learning disabilities and how they can be overcome,” said Marjorie Roemer,

RIWP director. “Professor Allington is one of the most distinguished voices in the field. And, he’s a riveting speaker.”

His most recent work, *Big Brother and the National Reading Curriculum: How Ideology Trumped Evidence*, examines the influence of failed federal educational policy on reading instruction.

Previously, Allington was the Irving and Rose Fien Distinguished Professor of Education at the University of Florida, and chair of the Dept. of Reading at the University at Albany, SUNY. He currently serves on the editorial boards of *Reading Research Quarterly*, *Remedial and Special Education*, *Journal of Literacy Research*, *Journal of Disability Policy Studies* and the *Elementary School Journal*.

Cost of the conference is \$60 for the general public, \$50 for RIWP fellows, \$20 for students, and \$75 on the day of the event. Fee includes breakfast, lunch, keynote address and two workshop sessions. For more information, contact RIWP at 401-456-8668 or [RIWP@ric.edu](mailto:RIWP@ric.edu). Visit the website at [www.ric.edu/riwp](http://www.ric.edu/riwp).



# Oral History Committee request photos, memorabilia

For the past two years, the Oral History Committee has been conducting interviews of emeriti faculty, alumni and others. Now that the interviews are nearly complete, the committee is planning to produce a publication featuring this work. The College community is invited to send old photos appropriate for this publication and/or display during the upcoming 50th anniversary celebration of RIC's Mt. Pleasant campus.

*Memorabilia for display is also welcome. Items can be loaned or contributed to a permanent archive celebrating the 50th anniversary. Contact Kathryn Sasso at 401-456-8022 or ksasso@ric.edu.*

## Alumni Awards cont.

From the time she encounters them as prospective students to long after graduation, alumni look to Deborah for advice and counsel, and consider her an important mentor.

In addition to serving on numerous College committees that have benefited from her service, Deborah is an active member of the Ebenezer Baptist Church, and serves as trustee, teacher and member of the church's choir. As a 23-year member of Zeta Phi Beta Sorority, Inc., a national education foundation, she has served as local president, treasurer, tri-state director and national conference chairperson.

### 2007 Alumni Service Award Marie R. Fraley, Past President and founding member of Friends of Portuguese Studies at Rhode Island College

*Criteria: An alumnus/a or non-alumnus who has made an important contribution to the College by giving time, talent, or resources; or an outstanding citizen who has made a contribution to the state or nation that reflects ideals of service to humanity.*

Anxious to learn more about her heritage, Marie Fraley came to RIC to study Portuguese after retiring as a speech-language pathologist. The granddaughter of four Azorean immigrants, Marie has been instrumental in launching the College's Institute for Portuguese and Lusophone World Studies, created in October of 2006. The institute serves as a nucleus for academic, cultural and community service initiatives. As a volunteer, Marie has invested her time, energy and financial resources to establish the institute, securing ongoing program support and raising over \$700,000 toward a \$1 million endowment for the Institute.

Marie has earned a Certificate in Non-Profit Studies from the College and is a co-founder and immediate past president of Friends of Portuguese Studies (2003-07). In November, she was named a Partner in Philanthropy by the Association for Fundraising Professionals.

### 2007 Charles B. Willard Achievement Award Mark Stenning '78, Chief Executive Officer, International Tennis Hall of Fame

*Criteria: Graduate of the College, brought honor to the College by distinguished achievement in his/her field.*

During his 27 years with the International Tennis Hall of Fame, Mark Stenning has earned wide acclaim for his leadership. Not only is he responsible for the Hall of Fame's \$5 million operating budget and its numerous staff and community events, but he also organizes the Hall's annual enshrinement ceremony, which receives international coverage. In addition, he serves as the tournament director and represents the Hall's interests on the ATP tour.

A psychology major, Mark is a great example of how a degree from RIC can take you in any direction. He serves on local boards, the Newport County Convention and Visitor's Bureau, the NewportFed Charitable Foundation and is a corporator for BankNewport. He has been a governor of the Newport Health Care Corporations since 1997 and is a member of the board of trustees for the Boys and Girls Clubs of Newport County.

### 2007 Alumni Faculty Award Teresa Coffman, Associate Professor of Music

*Criteria: Need not be a graduate of the College, but employed by the College. Wide recognition for exceptional competence in teaching, printed publication, initiative in research, development of a new program, community recognition of quality of service to the community or campus.*

Teresa Coffman's contributions to the College community extend far beyond the studio voice lessons she offers as an associate professor. She oversees the College's choral program and conducts the Concert Chorus, Chamber Singers and Women's Chorus.

Under her direction, the RIC Chamber Singers, a choir of about 60-80 voices, completed successful concert tours of Ireland (2002), Great Britain (2004) and Italy (2006). In 2008, the Chamber Singers plan to perform in Budapest and Prague.

Teresa is a lifetime member of the Sigma Alpha Iota, and currently serves as the college/university repertoire and standards chair. Professional memberships include the American Choral Directors Association, Chorus America, National Association of Teachers of Singing and the College Music Society.

Teresa is the 2006-07 recipient of the College's Paul Maixner Award for Distinguished Teaching. She serves on many College committees including the Alumni Association's Homecoming committee. She is rarely seen without her students, whom she mentors and encourages in all areas of their lives.

### 2007 Young Alumni Award Michael N. Browner, Jr. '98, M '04 Social Studies Teacher, Frank E. Thompson Middle School, Newport

*Criteria: Graduated in the last 10 years from the College, and has made a contribution to the College, since graduation, by giving time, talent, or resources.*

Michael Browner has brought distinction to the College both on and off campus, as exemplified by his being honored as the 2006 Multicultural Educator of the Year at the RIC Promising Practices Conference.

At Thompson Middle School, he serves as a positive role model, especially for young black males. Every day, Michael works to ignite a love of history and a sense of cultural pride among his students. In addition, he has initiated a morning tutoring session before school as well as a Saturday Boys Club for young men.

In 2004, Michael earned his master's in school administration and a principal's certificate. But it is his desire to remain in the classroom, where he has direct daily contact with students, and where he feels he can provide the most impact on their futures.

In addition to teaching, Michael is the church organist and choir director at the Community Baptist Church in Newport. He is also a new member of the R.I. chapter of the American Guild Organists.



## RIC Presidential Scholars

The Admissions Office hosted a group of new Presidential Scholar Award recipients recently at a dinner in their honor.





# 2007 Honor Roll

*Honor Roll recipients are recognized for their achievements in their chosen fields and their distinction as role models whose success demonstrates the value of a Rhode Island College degree. The 30 members of this year’s Honor Roll represent eight states and 28 advanced degrees from 17 different colleges and universities. A photograph and background information on each winner is mounted, framed and displayed in the Board of Governors Room in Roberts Hall for one year, and then sent to the respective departments for permanent display.*

**2007 Alumni Awards Dinner**  
**Thursday, May 10**  
**Donovan Dining Center**  
**Cost: \$35**  
**Reservation deadline: May 4**  
**Call 401-456-8086 for more information**



ACCOUNTING  
**David Oliveira '92, CPA, MBA**  
*President*  
Oliveira & Associates, Ltd.  
East Providence, R.I.



ART  
**Gregory Jamiel '01**  
*Design Director*  
Meredith Corporation  
Portland, Ore.



DANCE  
**Timothy Rubel '02**  
*Producer/Artistic Director*  
The Theatre Expansion  
Providence, R.I.



ECONOMICS/FINANCE  
**Veronica M. Walsh '86**  
*Executive Business Analyst*  
University of Rhode Island



HEALTH EDUCATION  
**Kurt A. Rix '85**  
*Senior Health Educator  
Training and Development*  
The Health & Wellness Institute  
Providence, R.I.



HISTORY  
**Dennis D. Jutras '99**  
*History Department Chairperson*  
Baltimore Polytechnic  
Institute, Md.



MUSIC  
**Gaston Malloy '76**  
*Retired Music Director/  
Music Instrumental Instructor*  
Seekonk Public Schools



NURSING  
**Charles Alexandre '79**  
*Chief, Health Professions Regulation*  
Rhode Island Department of Health



SECONDARY EDUCATION  
**Frances Viti Gallo '71, MEd '73, EdD**  
*Superintendent*  
Central Falls School District



SOCIAL WORK  
**Sharon Hubbard Hadley '81, MSW '89**  
*Caseworker Supervisor II*  
R.I. Department of  
Children, Youth & Families





BIOLOGY  
**Christopher Happy '93, MD**  
*Medical Examiner*  
Santa Clara County, Calif.



COMMUNICATIONS  
**Patricia Iafrate Bellini '79**  
*Speech/Language Pathologist*  
Central Falls School Department



COMPUTER INFORMATION SYSTEMS  
**Blake Morphis '00**  
*Healthcare Analyst*  
St. Joseph Health  
Services of R.I.



COMPUTER SCIENCE  
**Judith M. Harrigan '00**  
*Software Developer*  
Electro Standards Laboratories  
Cranston, R.I.



ELEMENTARY EDUCATION  
**Jennifer L. Hass Jendzejec '93**  
*Aspiring Principal/  
Principal Residency Network*  
Washington Oak School  
Coventry Public Schools



ENGLISH  
**Kevin J. Costa '92, PhD**  
*Drama Department Head/  
Associate Director of  
College Counseling*  
McDonough School  
Owings, Md.



FILM STUDIES  
**Christian de Rezendes '00**  
*Director/Camera/Editor*  
Breaking Branches Pictures, Inc.  
Brooklyn, N.Y.



GEOGRAPHY  
**Mary Grady '83**  
*Editor*  
Natural News Network  
RIC Adjunct Faculty



JUSTICE STUDIES  
**David Scott Borrelli '92**  
*US Probation Officer*  
US Probation and Pretrial Services  
Department, District of R.I.  
RIC Adjunct Faculty



MANAGEMENT  
**Alan J. Chille '82**  
*General Manager*  
Providence Performing  
Arts Center



MARKETING  
**Laurie McGunagle '85**  
*Special Agent*  
Criminal Investigation  
Internal Revenue Service



MATHEMATICS  
**Edward Sullivan '66, MA '97**  
*Mathematician (Retired)*  
Naval Undersea Warfare Center  
RIC Adjunct Faculty



PHYSICAL EDUCATION  
**Debra Blais Reddy '86, MEd '89**  
*Physical Education Teacher*  
Lincoln Public Schools



PHYSICAL SCIENCES/CHEMISTRY  
**Patricia Delaive Beighle '75 PhD**  
*Business Consultant/  
Vice President, Manufacturing*  
MacDermid Printing Solutions, N.C.



POLITICAL SCIENCE  
**Eileen M. Clancy '92**  
*Director*  
Court Dispute Referral Center  
Brooklyn Criminal Court



PSYCHOLOGY  
**Sheryl J. Kopel '94**  
*Project Director/Data Manager*  
Childhood Asthma Research Program  
Rhode Island Hospital/  
Brown Medical School



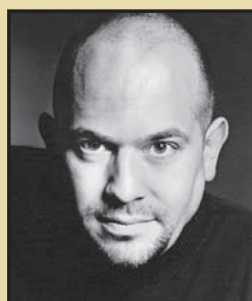
SOCIOLOGY  
**John C. O'Connor III '93, EdD**  
*Commander, U.S. Coast Guard*  
Chief, U.S. Coast Guard  
Officer Candidate School  
New London, Conn.



SPECIAL EDUCATION  
**Gene E. Dashoff Paranzino '70, MEd '74, '84**  
*Special Education Teacher (retired)*  
Fall River Public School System  
Adjunct faculty, RIC, Fisher College



TECHNOLOGY EDUCATION  
**Peter L. Nero '76, MEd '96**  
*Assistant Superintendent  
of Schools*  
Cranston Public Schools



THEATRE  
**Mark Morettini '87**  
*Actor*  
Roundabout Theatre  
New York, N.Y.



# Opera made in America: RIC Chorus performs works by Carlisle Floyd

**BY RAY RAGOSTA**  
*Staff Writer*



retains from her childhood among Southern evangelicals. But Coffman, who is choral director and associate professor of music at Rhode Island College, recalls these scenes with a bit of irony, for they are also associated with another experience – seeing the revival scene in Carlisle Floyd’s opera *Susannah*.

While this experience brought back memories, it also has a strong connection to her professional endeavors. Coffman “wrote the book” on Floyd, as she describes it, at least as far as his choral music is concerned. Her doctoral dissertation at the University of Houston was on his choral compositions.

At the time, Carlisle Floyd was teaching at the university and was working with the Houston Opera Studio, of which he was co-founder.

Now, on May 4 for her annual spring choral concert, Coffman will be presenting scenes from five of Floyd’s operas: *Susannah*, *Of Mice and Men*, *Markheim*, *Willie Stark*, and *The Passion of Jonathan Wade*, the last two of which were specifically requested by the composer. Floyd is expected to attend the concert.

Taking place in Sapinsley Hall in the Nazarian Center, the concert will focus on choral scenes from the operas and will feature the Rhode Island College Chorus. Coffman is also including several notable solos, and has recruited soprano Diana McVey for the role of *Susannah*, along with two faculty vocalists: tenor Fred Scheff ’83 for Lennie from *Of Mice and Men*, and baritone Tianxu Zhou for Olin Blitch from *Susannah*.

The Henry Barnard School Fifth Grade Chorus, directed by Jay MacCubbin, will open the evening and perform four songs for children’s voices, which Floyd composed in the 1960s. These are two Stevenson songs, *Rain* and *Where go the boats*; Christina Rossetti’s *Who has seen the wind*; and the anonymous lyric *Long, long ago*.

When one considers orchestral music in the American idiom,

Camp meetings in outdoor tabernacle tents with sawdust floors. Preachers declaring the sorry state of sinners and their fate to spend eternity amid hellfire and brimstone. These are some of the “horrifying memories” Teresa Coffman

the name Aaron Copland springs to mind. If most people don’t know the names of such pieces as *Fanfare for the Common Man* or *Rodeo*, there is a very good chance that they could recognize the music.

Copland, however, wrote only one major opera, *The Tender Land*, and so left that territory pretty much open.

It is Carlisle Floyd who has laid claim to it.

Not only is Floyd a quintessentially American composer, but he also is quintessentially American. Born in Latta, S.C., in 1926, his ancestry on both sides reaches back the earliest European settlers in the Carolinas. His father was a Methodist minister and held posts in a variety of small South Carolina towns in the Southern Bible Belt, where Floyd spent his childhood.

Most of Carlisle Floyd’s operas deal with rural, southern or colonial settings. And subject matter seems equally important as the music for him as he writes his own librettos.

For most of his adult life, Floyd has lived and taught in Houston and in Florida, earning him a reputation as an outsider, not being part of the Northeastern musical establishment. That outsider role in itself connects with a prominent theme in American mythology and figures in such operas as *Susannah* and *Jonathan Wade*.

Still, the musical establishment has bestowed its accolades on him. The prominent music critic Andrew Porter said of Carlisle Floyd in *The New Yorker*, “With a commitment that rivals Smetana’s in Bohemia or Britten’s in Britain, [Floyd] has striven to create a national repertory. ... He has learned the international language of successful opera in order to speak it in his own accents and to enrich it with the musical and vernacular idioms of his own country.”

The 1994 recording of *Susannah*, made under the supervision of Floyd himself, won a Grammy and featured Cheryl Studer, Samuel Ramey, Jerry Hadley and the Orchestre de L’Opera de Lyon, with Kent Nagano conducting.

In 2001 Floyd was inducted into the American Academy of Arts and Letters. Then in 2004 President George W. Bush and Laura Bush presented him with the National Medal of Arts, with the following citation: “For giving American opera its national voice in a series of contemporary classics rooted in American themes.”



TERESA COFFMAN



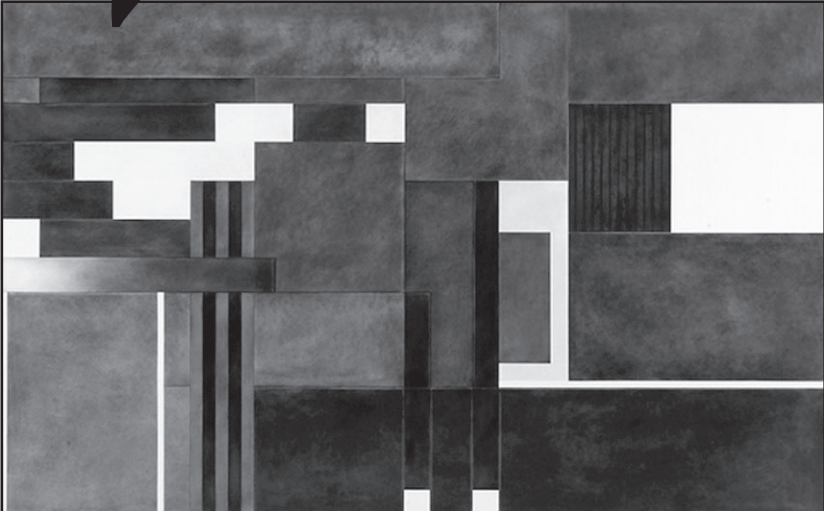
CARLISLE FLOYD

Continued on p. 14



## Singing in the Spring

On April 22, the RIC Chamber Singers and choruses will present the Spring Choral Ensembles Concert at 8 p.m. in Sapinsley Hall in the Nazarian Center. The RIC Chamber Singers and Women’s Chorus, conducted by Teresa Coffman, and Men’s Chorus, conducted by Tianxu Zhou, will perform a number of light selections designed for smaller vocal ensembles, including a variety of folk songs, spirituals and vocal jazz arrangements. *General Admission is \$3. Free for RIC students, faculty and staff.*



Greg Parker. Untitled, 2006. Oil, pigment, and graphite on gesso panel, 60” x 96” x 3”.

## A decade in retrospect: Greg Parker at Bannister Gallery

Greg Parker will be the focus at Bannister Gallery from April 12 to May 3, with a chronological survey of his paintings and works on paper from the last decade or so.

The exhibition will trace how Parker’s present work has been informed by the past – the development of content, the evolution of materials and techniques, and the intangible reasons that are at the heart of any artist’s growth.

The selection on display will underscore a certain continuity of purpose that is a product of the places and events of Parker’s life, as well as the formal exploration of geometry, color, and mathematical systems.

Writing on Parker for *Art in America*, Jonathan Goodman noted, “Given the smooth surfaces of such pieces and their overall geometry, they recall Minimalism most readily, but through his process, Parker distills a luminescence that links them as well to the tradition of the Hudson River School.”

Parker lives and works in Maine. He has exhibited widely and is represented in New York City at Jim Kempner Fine Art. His work can be found in the collections of the Portland Museum of Art; Fidelity Investments, Boston; the DeCordova Museum and Sculpture Park; the Ritz Carlton International, Boston; and the British Museum in London.

A reception at Bannister will take place on April 19, Providence’s Gallery Night, with transportation available. Visit [www.gallerynight.info](http://www.gallerynight.info) for details.

*Gallery hours during exhibits are Monday, Tuesday, Wednesday and Friday, 11 a.m. to 5 p.m., and Thursdays, noon to 9 p.m. Closed weekends and holidays. Exhibits and events are free and open to the public. Accessible to persons with disabilities. For information on event dates and exhibit opening receptions, check the website at [www.ric.edu/Bannister/](http://www.ric.edu/Bannister/) or call 401-456-9765.*



# The music of Liszt sparks Keyboard Conversations April 17

Jeffrey Siegel’s celebration of the Great Romantics continues with *Liszt: the Devil Made Me Do It*, a Keyboard Conversations concert set for Tuesday, April 17 at 7:30 p.m. in Sapinsley Hall in the Nazarian Center. The performance is the last in Siegel’s series of four Conversations at RIC this season, which is his fifth at the College.

This selection of Liszt compositions is highlighted by its transcendental virtuosity and excitement. Liszt, a Hungarian-born pianist and composer, was famous throughout 19th century Europe for his great skill and showmanship. Considered one of the greatest pianists in history, he has also been credited with the modernization of the piano recital.

Each of Siegel’s “concerts with commentary” begins with an insightful prologue on the music to be played,

followed by a performance of the work. The evening comes to an end with a lively question-and-answer session.

Siegel strives to make music accessible to everyone. *The Chicago Tribune* has written that his programs “strengthen the fragile bonds of communication between composer and listener and are as welcome as they are rare.”



JEFFREY SIEGEL

*Tickets for Jeffrey Siegel’s Keyboard Conversations are \$25, with discounts for seniors, RIC faculty/*

*staff/students and children. For your convenience, tickets can be purchased as follows: in advance via VISA or MasterCard by calling 401-456-8144 from 10 a.m. to 4 p.m. weekdays; online at [www.ric.edu/pfa](http://www.ric.edu/pfa); or in person at Roberts Hall box office until the time of the performance on the day of the event.*

# ‘Music of the Spheres’: Wind Ensemble offers out-of-this-world concert April 27

The RIC Wind Ensemble concludes its spring season with an otherworldly concert titled *Music of the Spheres* on Friday, April 27 at 8 p.m. in Sapinsley Hall in the Nazarian Center. The performance will be conducted by Robert Franzblau, associate professor of music and secondary education.

Created by the ancient Greek astronomer Pythagoras, “Music of the Spheres” is a mathematically harmonic impression that draws on the sun, moon and planets’ movements to create perfect yet inaudible harmonies.

The Wind Ensemble’s *Music of the Spheres* will include *Space Music* by Donald Erb, *Concerto for Trumpet* by Alexander Arutunian, *The Dog Breath Variations* by Frank Zappa, as well as the *Jupiter* and *Mars* movements from *The Planets* by Gustav Holst. It will also feature new works by RIC student composers, and the RIC Senior Concerto Competition winner, Samuel Costa, will be introduced.

Costa, a senior music education/performance double major, will perform the solo in Arutunian’s dramatic *Concerto for Trumpet*.

*The Dog Breath Variations* is a fun, rhythmic composition of brass, woodwind, and percussion instruments supplemented by a rock band. The short *Space Music* explores unusual textures and sonorities, with little emphasis on traditional melody or harmony.

*Jupiter: The Bringer of Jollity* and *Mars: The Bringer of War* are chosen from Holst’s astrologically inspired *The Planets*, first performed in 1918. *Mars* depicts the War God, portraying the mercilessness of combat, while *Jupiter* evokes carefree feelings of dancing with beautiful women.

*General admission is \$7. For further information, call the box office at 401-456-8144.*



# Time for Three makes time for RIC April 23

The musical trio Time for Three, known for their engaging, unconventional concerts that blur genres, will perform at the College as part of RIC’s Performing Arts Series on April 23 at 8 p.m. in Sapinsley Hall in the Nazarian Center.

Three students from the Curtis Institute of Music – violinists Zachary DePue and Nicolas Kendall and double bassist Ranaan Meyer – formed Time for Three in 2001. Each member brings to the group unique musical experiences and tastes, allowing its repertoire to evolve into an array of bluegrass, Hungarian gypsy, jazz, country-western fiddling, classical, improvisatory and original music.

Time for Three has performed over 200 times, including playing with the Philadelphia Orchestra, opening for k.d. lang at Philadelphia’s Kimmel Center, and appearing at the Beethoven Society in Washington, D.C., the Cerritos Center in Los Angeles, Joanne Woodward’s Westport Playhouse, the Philadelphia Folk Festival, Wyoming’s Grand Teton Music Festival, Chicago’s Music in the Loft series and Paul Newman’s Hole in the Wall Gang Camp’s Fandango XIV.

David Patrick Stearns of *The Philadelphia Inquirer* wrote, “These musicians exude youth without the slightest air of exclusion, and with a wit and invention allowing violinists Zachary DePue and Nicolas Kendall to casually toss classical-music quotations (the Mendelssohn *Violin Concerto* for one) into high-velocity vernacular fiddling. Their grab-bag fusion works because the music seems like a genuine expression of who they are, as opposed to the execution of a marketing plan.”

Noted actor Paul Newman said of the trio, “To hear these three young guys is to be thankful that music was invented. ... If I had been able to create a sound like these kids a few years back, I might have thought twice about going into acting!”

To date the group has two albums, their debut CD released in 2002, *Time for Three*, and a second album released last winter, *We Just Burned This For You*.

The musicians also have successful careers as individual artists.

*Tickets for Time for Three are \$30 with discounts for seniors, RIC faculty/staff/students and children. For your convenience, tickets can be purchased as follows: in advance via VISA or MasterCard by calling 401-456-8144 from 10 a.m. to 4 p.m. weekdays; online at [www.ric.edu/pfa](http://www.ric.edu/pfa); or at the box office in the lobby of the appropriate performance venue, which will be open for sales two hours prior to performance start time.*

April 18

# RIC faculty members take center stage April 18

The Wednesday Chamber Music Series season finale will showcase members of RIC’s music faculty in a recital on April 18 at 1 p.m. in Sapinsley Hall in the Nazarian Center. The concert, *Musical Potpourri*, will feature an eclectic program of musical delights, including Joseph Foley’s trumpet virtuosity and *Jazz Sonata* by Philip Martorella, performed by the composer and by renowned saxophonist Greg Abate.



# RIC Symphony Orchestra to perform 29th Bicho Family Memorial Scholarship Concert

Internationally known opera singer Diana McVey will be the guest soloist in the RIC Symphony Orchestra’s final concert of the season on Monday, April 30 at 8 p.m. in Sapinsley Hall in the Nazarian Center. The 29th Annual Bicho Family Memorial Scholarship Concert will be conducted by Edward Markward, director of the Symphony Orchestra and professor of music.

McVey will perform *Bacchianas Brasileiras No. 5* for soprano and eight cellos by Brazilian composer Heitor Villa-Lobos. Also on the program are Stravinsky’s *Symphonies of Wind Instruments* and Dvorak’s *Symphony No. 9* (from *The New World*).

McVey has sung extensively with opera companies and symphony orchestras such as the Sarasota Opera Company, Salt Marsh Opera, the Albany Symphony, and others. In June 2006, she made her Carnegie Hall debut in Mozart’s *Requiem*, and a week later she appeared in Bizet’s *Carmen* in Dubai, U.A.E. She also had leading roles in the opera premieres of Richard Cumming’s *The Picnic* and John Sumerlin’s *Air*.

Last month, she performed with the Naples Opera Company in Florida, and in June will perform Strauss’ *Four Last Songs* and Brahms’ *Ein deutsches Requiem* with the Rhode Island Civic Chorale & Orchestra.

Proceeds from the concert will go to the endowment for music scholarships held in trust by the Rhode Island College Foundation. Up to four scholarships are given each year to a student in the areas of piano, strings, voice and winds, brass and percussion. The award is named in honor of Rita V. Bicho, longtime professor of music at RIC, and her sister Mary, a highly respected public school music teacher.

A donation of \$10 is requested for the scholarship fund. Seniors and non-RIC students, \$5; RIC students, faculty and staff, free. For tickets, contact the RIC Box Office at 404-456-8144.



EDWARD MARKWARD



DIANA MCVEY

## Carlisle Floyd cont.

In addition to these tributes, Floyd had a highly auspicious start to his career. His most famous opera, *Susannah*, premiered at Florida State University in 1956 and was soon staged at the New York City Opera. It then received the New York Music Critics’ Circle Award, and later, was presented at the Brussels World Fair in 1958.

Since then *Susannah* has been produced more than 800 times, and for her spring concert, Coffman has selected two scenes from it.

The opera is loosely based on the Biblical tale of Susannah and the Elders, and is set in New Hope Valley, Tenn. The plot revolves around the hypocrisy surrounding sexual mores in that community and culminates when the preacher Olin Blitch, who visits Susannah to pray for her wayward soul, ends up raping her.

Except for *Markheim* (1966), which is based on a Robert Louis Stevenson story about murder and redemption involving a decadent English aristocrat, the other operas chosen by Coffman all explore various American tragedies. Two of these are derived from familiar American literary classics.

*Of Mice and Men*, from 1969, dramatizes the Steinbeck novel about two migrant ranch workers, George and Lennie, in pursuit of a simple dream: to own a small house and farm of their own. The dream becomes a nightmare, when Lennie, who has the strength and physique of a giant but the mind of a child, accidentally kills the wife of a ranch owner who employs them. To save Lennie from a likely lynching, George shoots him.

The 1980 opera *Willie Stark* is based on *All the King’s Men*, Robert Penn Warren’s Pulitzer Prize-winning novel inspired by the life and career of Louisiana governor Huey Long. The character Willie Stark is torn by a profound conflict between the idealistic man who entered politics and the corrupt politician he has become.

Stark’s final conflict, however, comes when he convinces the socialite Anne Stanton to break off her engagement with Jack Burden and marry Stark instead. Distraught over hearing about these plans and over the recent suicide of his father, Burden shoots and kills Stark as the politician is delivering a victory speech.

*The Passion of Jonathan Wade* (1962, rev. 1989) takes place in post-Civil War Columbia, S.C. Wade is a Union army colonel who falls in love with Celia Townsend, a Southern war widow and daughter of local judge Gibbes Townsend.

In spite of parental opposition, Celia and Jonathan marry; the marriage, along with Wade’s anti-slavery views, only exacerbates existing anti-Northern sentiments. Eventually, Wade decides he must flee Columbia with Celia and desert the army. As they leave, Wade is shot and dies in Celia’s arms.

Ironically, the reason for Carlisle Floyd’s distinction as an opera composer may have been best described by a British critic, Robert Sabin, writing on one of Carlisle’s few non-American works, *Wuthering Heights*: “He has a dramatist’s imagination, complete musical integrity, and the ability to make things live on stage.”

It is a distinction Floyd earned by casting a time-honored form of musical expression in a uniquely American mold.

General admission to the concert is \$3. Call 401-456-8144 for more information.



MIRA FURLAN

Actress Mira Furlan, best known for her role as Danielle Rousseau on ABC’s Emmy winning television series *Lost*, and as Ambassador Delenn in *Babylon 5*, made a special guest appearance in *WOMEN, WAR, DESERT* at

# Lost’s Mira Furlan stars in WOMEN, WAR, DESERT at RIC

Rhode Island College on April 5 in Forman Theatre in the Nazarian Center. An open forum to meet the artists took place following the presentation, which was a part of the College’s Spring Celebration of the Arts.

The performance was an ode to brave women who have boldly raised their voices against the madness and horrors of war. The story is told by two mothers, one Arab and one American, played by Furlan and former Trinity Rep member Nahassaiu deGannes, who have lost their sons fighting on opposite sides of the front line. The two women meet in the middle of the desert and realize that war does not decide who is right, but who is left. They discover that in the end, only mothers on both sides cry.

The play was written by Slobodan Snajder and directed by Naum Panovski, head of RIC’s master’s program of theatre in performance and society.

For Furlan, war has shaped her life. She has starred in over 30 films produced in Europe. A socially conscious actress and activist who openly spoke out against the war in her homeland of Yugoslavia, Furlan was the target of a media campaign to vilify her, and received repeated death threats before moving to the United States as a refugee.

“One of the most horrifying aspects of war

is that it takes away your choices. You’re forced to be someone you had no idea you could be,” said Furlan. “It forces you to accept the complexity of human nature, its horrible flaws and weaknesses, as well as its potential for greatness.”

Furlan now regards herself as an American whose old country of Yugoslavia no longer exists. Since coming to the U.S., she has performed in a number of theatrical productions, a made-for-television movie, in addition to *Lost*, and released a CD. Furlan returned to her former country for the first time in 10 years to star in Euripides’ *Medea* and received critical acclaim.

“Mira Furlan’s theatre work and social activism in some ways personifies the core of our MFA program,” said Panovski.

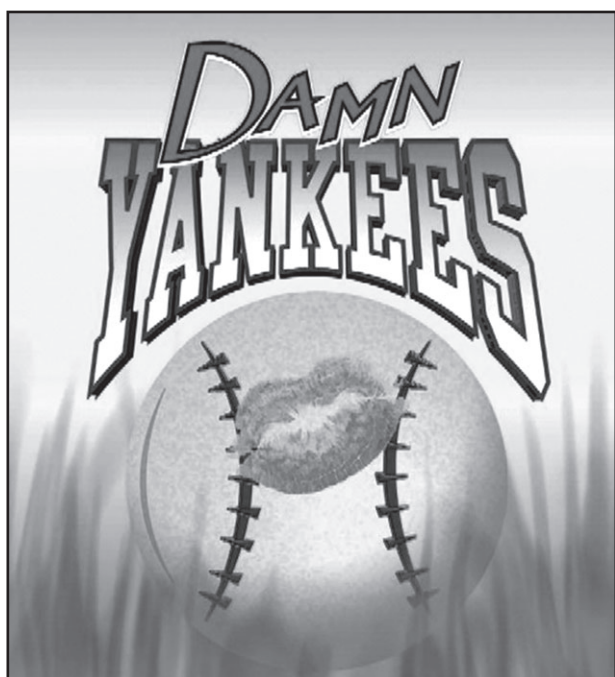
Panovski said that the RIC program, like Furlan, encourages students to become socially conscious and engaged thinking artists and prepares them to challenge the boundaries of the art and its presence and relevance in and to society.

“I hope the play will make them (the audience) think for a moment. Think about their own choices at this particular time when a war is fought somewhere in some unknown desert – in their name,” said Furlan.

RIC OPERA WORKSHOP  
 May 6

Students in the Opera Workshop at Rhode Island College will perform scenes from *Così fan tutte*, *The Magic Flute* and *Don Giovanni* by W. A. Mozart, *Werther* by Jules Massenet, *Dido and Aeneas* by Henry Purcell and *The Old Maid and the Thief* by Gian Carlo Menotti. Performance co-directors are Edward Markward and Susan Rodgers, and the pianist is Christina Breindel. The performance will take place on Sunday, May 6 at 7 p.m. in Forman Theatre in the Nazarian Center. Admission is free.

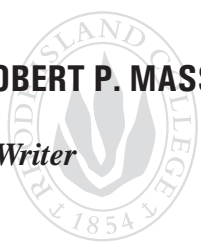




## Damn Yankees: A devilish delight

BY ROBERT P. MASSE

Staff Writer



How far will one man go to beat the pinstripe powerhouse? Across the country, there are many

baseball fans that root against the New York Yankees. *Damn Yankees* is a story about one of those fans.

RIC's Department of Music, Theatre, and Dance presents *Damn Yankees* from April 19-22 at the Auditorium in Roberts Hall. The play takes place in 1955, and as usual, the New York Yankees are dominating the American League,

and the Washington Senators are having a losing season. One frustrated Senators fan, Joe Boyd, decides to sell his soul to the devil to become the greatest baseball player of all time and help the Senators win the American League pennant. But as all deals with the devil go, Boyd must give as well as get, in this case he must choose which is more important: family or baseball. *Damn Yankees* is a timeless classic that the whole family can enjoy. The play is a great combination of America's pastime and some of the best songs to hit Broadway, including *What Ever Lola Wants* and *Heart*.

Over the last 10 years the Department of Music, Theatre, and Dance has brought some of the best loved musicals to campus. In choosing *Damn Yankees*, director Bill Wilson, chair of the department, wanted to present a musical by Richard Adler and Jerry Ross. The last time the College performed one of their musicals was the 1989 production of the *Pajama Game*. The production of *Damn Yankees* will be the first time in nine years that a musical will have a full student orchestra.

The play will be the culmination of an effort that dates back to December of last year, when 70 RIC students competed for roles. Wilson whittled the list to the 28 who will be appearing in the play, some in multiple roles. The production required over 100 people covering everything from set and costume design to rehearsing scenes.

Though he is the director of the play, Wilson knows he doesn't hold all the power. "As rehearsals progress, a director is gradually relinquishing control of the production to the people in it who are on the stage."

Wilson said that the most rewarding part of producing any play is seeing actors grow from

rehearsal to closing day. "You watch somebody develop a character from nothing and, in the end, excel," he said.

*Damn Yankees* runs Thursday, April 19 through Sunday, April 22. Thursday through Saturday shows begin at 8 p.m. Saturday and Sunday matinees begin at 2 p.m. Tickets are available at the Roberts Hall Box Office. Reserved Seating is \$18. For more information, call the RIC Box Office at 401-456-8144.

### Proceeds from Shinn Fund reception to benefit students' study abroad

The 2007-08 winners of awards from the Ridgway F. Shinn, Jr. Study Abroad Fund will be introduced at a benefit reception in Forman Theatre in the Nazarian Center following the matinee performance of *Damn Yankees* on April 21.

Tickets for the reception and performance are \$30, which will be used to benefit the Shinn Fund. For ticket information or to make a contribution, contact James Bieren at 401-831-2495, Peter Moore at 508-336-9670, or the RIC Office of Development at 401-456-8087.

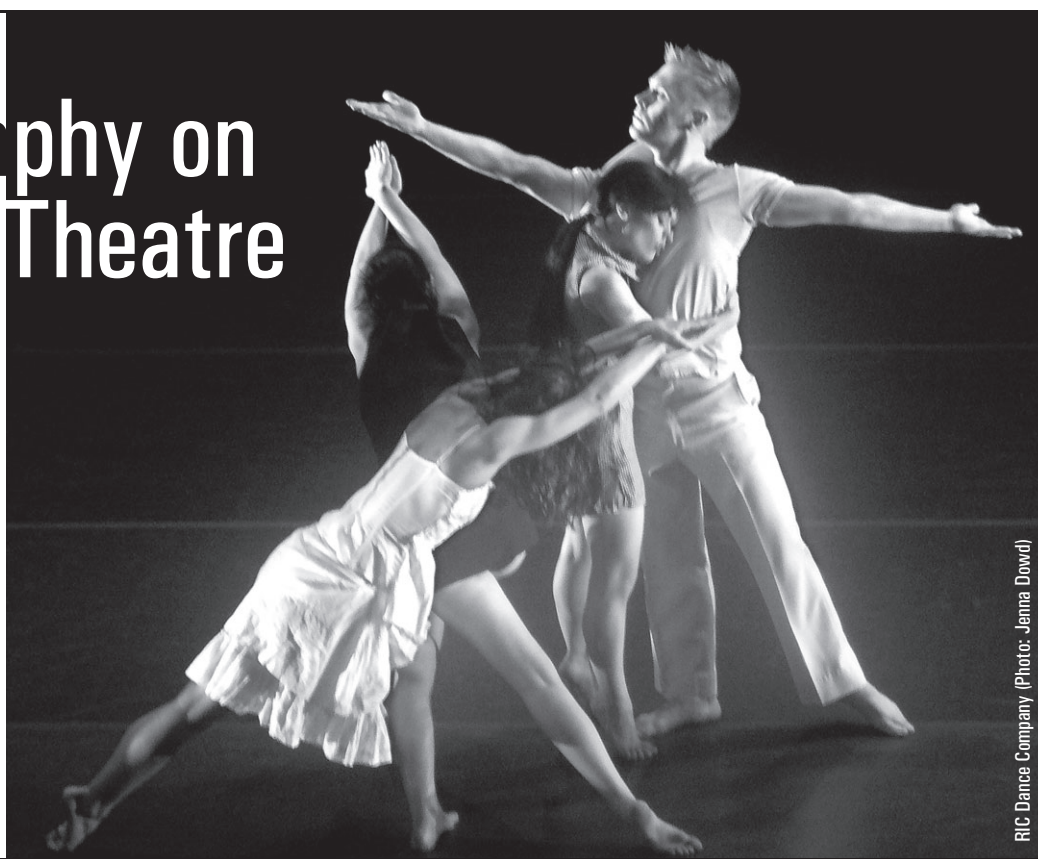
Those who return their contribution or ticket order by April 13 are eligible to win a weekend in the Berkshires, including a luxury condo in Lenox, dinner for two and a pair of tickets to the Norman Rockwell Museum. The drawing will take place at the reception.

April 26-27

## Student choreography on display in Forman Theatre

New student works will be presented in the Student Choreography showcase April 26-27 at 8 p.m. in Forman Theatre in the Nazarian Center. These creations are the result of course work and independent projects completed throughout the academic year. The annual showcase provides advanced students with an ideal venue for their work.

General admission is \$8; \$6 for seniors, groups and non-RIC students; \$4 for RIC students. Tickets may be purchased in advance at the Roberts Hall box office. For further details, call Dante Del Giudice, director of dance, at 401-456-9791.



RIC Dance Company (Photo: Jenna Dowd)

## Jazz Workshop performance puts class work on display April 18



GREG ABATE

The RIC Jazz Workshop and Combos Performance, led by noted musician and adjunct educator Greg Abate, will be held on Wednesday, April 18 at 7 p.m. in the Forman Theatre in the Nazarian Center. Selections from *The Great American Song Book*, and original works written by Abate and his students, will be performed.

The concert is a showcase of skills learned and fine tuned through RIC's Jazz Workshop

Combos class taught by Abate. Classes are small, with only four to eight students working on a tune suggested by Abate, who provides guidance on how to improve it – all in preparation for the performance.

Abate's career has prepared him to teach a new generation of jazz musicians. He played lead alto sax for the Ray Charles Orchestra for two years, and in 1978, he formed the group, Channel One. Next, he had the opportunity to play tenor sax with the revived Artie Shaw Orchestra under the leadership of Dick Johnson in 1986 and '87. Eventually, Abate ventured out as a soloist playing jazz festivals and

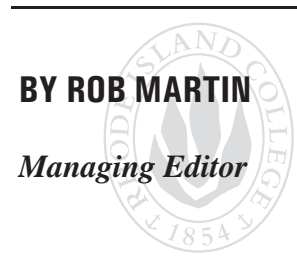
clubs throughout the U.S., Canada and abroad. To date, he has over 12 other recordings. He received Grammy nominations in four categories for his 2004 recording, *Evolution*.

As for why he teaches the music he has spent his life performing, Abate said, "I've given something to them that I know worked for me. And I just feel good about talking about something I love. I'm excited about it."

Admission is free for the Jazz Workshop and Combos Performance. For more information, call 401-456-8194.



# New EPSCoR science initiative adds to RIC research portfolio



**BY ROB MARTIN**  
*Managing Editor*

*This is the second of a two-part story about a pair of science research grants benefiting RIC and other*

*higher ed institutions in Rhode Island. Part one looked at INBRE, which promotes biomedical research. In this issue, we’ll focus on EPSCoR, a more recent funding initiative targeted to different areas of science.*

Glênisson de Oliveira, associate professor of chemistry, is performing a computational study of metalloproteins. These types of proteins require a metal cofactor to make them control the reactions for which they are responsible.

He is particularly interested in metalloproteins involved in controlling cell growth and repairing damaged DNA. The malfunction of these proteins has been linked to skin and breast cancers.

Experiments indicate that carcinogenic metals sometimes replace the natural metals in these proteins, according to de Oliveira. His lab is examining the effects of these metal replacements with computer models that use the principles of quantum physics.

“Shedding light on these interactions should not only broaden our knowledge of molecular biology, but should also help us understand the physics behind interactions that are quite different from typical chemical bonds,” said de Oliveira.

His project has been made possible by an EPSCoR grant, and is one of many currently underway at Rhode Island College and other colleges and universities in the state.

Science research such as de Oliveira’s got a major boost in June of 2006 with the arrival of EPSCoR (Experimental Program to Stimulate Competitive Research initiative).

While another RIC science program, INBRE, funds projects directly or indirectly related to human health, the three-year EPSCoR grant enhances studies in areas identified as strengths in the state, such as marine biology, and also

in proteomics and genomics, which are “new and growing parts of life science,” according to Edythe Anthony, RIC biology department chair and College liaison for both programs.

“The two programs are complementary,” explained Anthony. “EPSCoR is providing opportunities for faculty and student development in areas that were not previously eligible for this type of support.”

The program originated locally when URI, along with RIC, Roger Williams University, Salve Regina University, Brown University, Providence College, Community College of Rhode Island, and Rhode Island School of Design, submitted a proposal entitled *Catalyzing a Research, Education, and Innovation Network* to the National Science Foundation. The foundation awarded the schools, with URI as coordinator, a \$6.75 million EPSCoR grant over three years.

Of this amount about \$188,000 will come directly to RIC for research. The College’s portion for the first year was \$32,500, which is to be used to support RIC faculty research and travel. The grant will also eventually fund equipment and summer salary support for students.

Three years ago, John Williams, professor of chemistry, attended the first EPSCoR exploratory meetings, which involved faculty and administrators from the entire Rhode Island higher education community.

“The Rhode Island College contribution to the project is in existing and emerging areas of competitive research strength,” said Williams. Among the areas he cited are biochemistry, molecular biology/genetics, toxicology, science education, and developmental, population and reproductive biology.

“The proposed role in EPSCoR,” added Williams, “is collaboration on faculty research teams, involvement in undergraduate research initiatives, and worker training for biotechnology companies.”

As part of the EPSCoR program, Williams is pursuing a general research program in molecular toxicology, and

**Continued next page**



Sean Hersey '08, who is working on an EPSCoR project with professor John Williams, takes an NMR spectrum of a newly synthesized compound.



Dennis Bennett '08, a student of Professor Williams', dilutes a possible cholesterol ester with methanol to analyze it using liquid chromatography and mass spec.

## RICCSI: *An exciting new science program*

**By Glênisson de Oliveira**  
*Associate Professor of Chemistry*

This summer, a new chemistry program called RICCSI will be introduced at Rhode Island College. No, it’s not RIC’s version of the CBS television series *CSI: Crime Scene Investigation*, although Dr. Lamontagne’s forensics class may have some things to say about that show! Cynics may even say that unlike the other *CSI*, RICCSI doesn’t deal with “real chemistry,” but is only chemistry in theory. That is because RIC’s program is focused on the use of theoretical and computational chemistry (RICCSI stands for Rhode Island Computational Chemistry Summer Institute).

This growing field is actually at the cutting edge of chemistry, and is used to support all areas of experimental research, as scientists are able to make predictions and test new ideas accurately via computer simulation. The use of

existing models to solve chemical problems is usually called “computational chemistry,” while the development of new methods is usually labeled “theoretical chemistry,” and is done by chemists and physicists who are also computer geeks.

At the genesis of this project is the long-held idea that engaging high school and college students in research will give them a greater understanding of the whole scientific enterprise and increase their enthusiasm for the discovery process, thus improving the chance that those students will successfully pursue a career in science. That line of thinking has been touted by the National Science Foundation, the American Chemical Society and the Council on Undergraduate Research.

Engaging students in this way, however, has not occurred more widely for several practical reasons, including the long-term nature of most research projects and the inaccessibility to the expensive equipment typically needed for cutting edge research. Those difficulties are easily overcome in the field of computational chemistry, where short-term projects can be developed relatively easily, and the cost is minimal compared to other fields of research.

RICCSI will enable high school teachers and students to participate in inquiry activities in inorganic, physical and biological chemistry,

using computational chemistry as the main tool. Teachers will take a two-week course and be trained to use computational chemistry to implement inquiry experiments at the high school level. College students with research experience in computational chemistry will serve as mentors, and high school teachers and students will participate in short research projects that will enhance their content knowledge and scientific literacy. Experts in computational chemistry will present lectures in a summer seminar series in computational chemistry. All participants will present their findings in a local symposium and in an international conference in computational chemistry.

Three important groups – college students, high school teachers and high school students – will benefit from RICCSI, thus feeding the pipeline of Rhode Island’s future scientists.

RICCSI is funded by a three-year Title II Grant administered by the Rhode Island Office of Higher Education, and involves a partnership between the Physical Sciences Dept. at Rhode Island College, RIC’s Feinstein School of Education and Human Development, and the Providence Public School District. Julie Wollman and I are the principal investigators for the grant, and directors of the program. For more information go to [riccsi.riccollege.net](http://riccsi.riccollege.net).





INGRID MATTSON

The Dialogue on Diversity Committee of Rhode Island College presents the Twelfth Annual Diversity Spring Lecture "Islam and Muslims in the USA: Challenges and Opportunities"



Ingrid Mattson

Wednesday April 11, 2007

12:30 – 2 p.m.

Gaige Auditorium

Following the lecture, Mattson will participate in a dialogue on diversity with local Muslim and non-Muslim religious leaders in Rhode Island. Audience participation is invited and welcomed. The lecture is free and open to the public. The program has been generously supported by the President’s Office and College Lectures Committee.



# "Semana da Lusofonia"

(Lusophone Week)

Presented By

## Institute for Portuguese and Lusophone World Studies & Friends of Portuguese Studies at Rhode Island College

Sponsored in part by Instituto Camões, Dia de Portugal e da Herança Portuguesa em RI

**Monday, April 23, 2007: Portugal**

Professional Development Workshop: "O Sistema Político Português Hoje"

**Speaker:** Marília Favinha, Universidade de Évora; Joseph A. Levi, Rhode Island College

**Location:** Alger 110, Rhode Island College / **Time:** 4:00 p.m. - 7:00 p.m. / **Admission:** Free and open to the public.

**Teachers:** 3 RIDE CEU's for fee / Pre-register by April 20: \$20 / At door: \$25 / **Contact:** Ana Melo, Email: ap12@cox.net

**Tuesday, April 24, 2007: Brazil, Portugal & Cape Verde**

Roundtable Discussion: "The Sephardic World" **Moderator/Presenter:** Joseph A. Levi, Rhode Island College

**Presenters:** Nelson Vieira, Brown University; Marcy Brink-Danan, Brown University; Aviva Ben-Ur, UMass-Amherst

**Time:** 7:00 p.m. - 9:00 p.m. / **Admission:** Free and open to the public

**Location:** Brown Hillel: The Glenn & Darcy Weiner Center, Brown University, 80 Brown Street, Providence, RI

**Directions:** <http://www.brownhillel.org/directions/> / **Telephone:** 401-863-1591

**Wednesday, April 25, 2007: Guinea-Bissau & Portugal**

Lecture: "Contemporary Guinea-Bissau: Politics, Society, and Culture"

**Speaker:** Professor Peter Karibe Mendy / **Time:** 7:00 p.m. - 9:00 p.m. / **Admission:** Free and open to the public

**Location:** Sylvan Forman Center, Classroom C, East Campus, Rhode Island College

Documentary film about the Revolution of April 25th: "Uma Aventura para a Democracia" - Followed by Q&A

**Friday, April 27, 2007: Macau & Angola**

\*Special Presentation of the One-Act Play: "História de Maria e Alferes João" presented by the Portuguese Theatre Workshop of Rhode Island College for Secondary School Students of Portuguese (Portuguese and Macaense)

**Location:** Roberts Hall Auditorium, Rhode Island College / **Time:** 10:30 a.m. - 11:30 a.m.

\*RIC Faculty Research Conference, Rhode Island College:

Lecture & PowerPoint Presentation: "Portuguese and Jewish? Portuguese-Jewish Presence in the Americas: Brazil, the Caribbean, and the New England Area (1500-1840)" **Speaker:** Joseph A. Levi, Rhode Island College

**Location:** Student Union, Rhode Island College / **Time:** 9:25 - 10:45 am

\*Documentary film about the city of Luanda: "Oxalá cresçam Pitangas" ~ In Portuguese with English subtitles

**Speaker:** Ondjaki, Angolan Author / **Producers:** Ondjaki and Liberdade Kiluanja / Followed by Q & A

**Location:** Alger 110, Rhode Island College / **Time:** 7:00 p.m. - 9:00 p.m. / **Admission:** Free and open to the public

**Sunday, April 29, 2007: "Festival do Mundo Lusófono"**

Master of Ceremonies: Ricardo Farias of "Café da Manhã", WJFD-FM, 97.3, Rádio Globo

\*Presentation of the One-Act Play: "História de Maria e Alferes João" (Portuguese and Macaense)

\*Presentations by Students of Portuguese of Secondary Schools and Portuguese Schools in RI

\*Presentation of awards to winners of 2007 Day of Portugal and Portuguese Heritage Art Contest

**Location:** Roberts Hall Auditorium, Rhode Island College / **Time:** 2:00 p.m.- 4:00 p.m.

**Donation of \$5.00 per adult is voluntary. / Students and children free of charge**

For more information, contact: Dr. Joseph Levi, 401.456.8712 / 401.456.8496/ JLevi@ric.edu

Visit our websites: <http://www.ric.edu/iplws> <http://www.fpsri.com/c2.htm>



Campus close-up revealed:

It's in the lobby of The Murray Center!

EPSCoR continued

has been awarded a stipend for the summer to begin a project to synthesize and test tamoxifen analogs.

Tamoxifen is a drug used in breast cancer treatment and a member of a broad class of similar structures called SERMS, or selective estrogen receptor modulators, explained Williams. The compounds will be prepared and analyzed in RIC labs in Clarke Science and at the RI-INBRE Core Facility at URI.

They will be then screened against estrogen receptor proteins in labs at RIC in collaboration with Karen Almeida ‘94, assistant professor of chemistry, and Rebeka Merson, assistant professor of biology.

Computational chemistry of drug-receptor interactions will also be done at RIC and at URI’s bioinformatics lab, said Williams.

His tamoxifen project will provide funding for summer research fellowships for up to four undergraduates who are enrolled at Rhode Island EPSCoR institutions.

Williams is one of four RIC faculty members with a reduced teaching load to allow for more time to perform research in EPSCoR fields.

Another of those educators, Dana Kolibachuk, an associate professor of biology, is working with PHA, a bacterial storage material with an application as a biodegradable plastic. She is studying the genes and gene products necessary for PHA synthesis in a light-emitting marine bacterium. Of particular interest to her is an enzyme, PHA synthase, which influences the final composition of the PHA polymer and could extend the potential uses for this material.

She noted that EPSCoR funding will provide for equipment needed to measure the activity of PHA synthase and to study the composition of the PHA found inside bacterial cells.

“Because this equipment will be available for use by other researchers, the research capability of Rhode Island College will be enhanced by the EPSCoR award,” Kolibachuk said.

EPSCoR funding has provided time for Eric Roberts, assistant professor of biology, to work on two research projects during this semester.

Along with a collaborator at URI, he is isolating and characterizing red seaweed genes that encode the enzymes needed to produce cellulose. Cellulose is the main chemical component of plant cell walls, which have commercial value in the form of wood, paper and many other fiber crops. Derivatives of cellulose are used in producing plastics, lacquers and synthetic fibers.

For his other project, Roberts is collecting preliminary genetic data on the synthesis of cellulose by desmids, a group of unicellular green algae. Because of their simple structure and close evolutionary ties to land plants, desmids provide useful models for understanding aspects of cell wall synthesis and plant evolution.

“Results from both of these projects may allow us to genetically manipulate the cellulose made by commercially important plant species,” said Roberts.

The data gathered by Roberts in these projects will be correlated with biochemical, immunological and structural data collected by colleagues at other institutions in anticipation of a multi-institution grant application.

Funds have also been earmarked for EPSCoR Academy, which Anthony describes as a “statewide clearinghouse to provide opportunities for students to become involved in life science research.”

The academy will allow current and future researchers to focus on seeking out additional funding for research as well as technology transfer and economic development in the state.

While the findings of EPSCoR-funded research projects are ongoing, the expansion of knowledge and the educational opportunities for students have already made this experiment in collaborative science a proven success.



# FOCUS ON Faculty & Staff



ROBIN KIRKWOOD AULD

Many educators in RIC’s Dept. of Health and Physical Education participated in the National AAHPERD Convention in Baltimore, Maryland from March 12-17. AAHPERD is an acronym for American Alliance for Health, Physical Education, Recreation and Dance.



KAREN BERARD-REED

**Robin Kirkwood Auld**, associate professor of health and physical education, presented a paper titled “Teaching Off-the-Ball Movement Concepts in Physical Education and Dance”; **Karen Berard-Reed ’93**, assistant professor of health and physical education, presented the session “Turning Health Education into Child’s Play: Interactive Games to Enhance Instruction”; and **Kerri Tunnicliffe**, assistant professor of physical education, presented “Service Based Learning: From Practice to Reality.”



KERRI TUNNICLIFFE

**Karen Castagno** and **Bennett Lombardo**, professors of health and physical education, **Susan Clark**, assistant professor of health education, and Auld, Berard-Reed and Tunnicliffe, participated in the NCATE Initial Program Training Workshop while at the convention.

## RIC Golf League accepting new members for the 2007 season

The RIC Golf League will tee off Wednesdays at Triggs Memorial Golf Course beginning with a practice round on May 2. Play will continue through the summer. Members of the RIC community can enjoy friendly, relaxed competition at four levels of play, ranging from beginners (a great way to learn) to advanced, with appropriate handicaps provided for all. Tee-off time is between 3 and 4 p.m. and each participant will play nine holes. To join, or for more information, contact Charles Allsworth at 401-456-8406 or [callsworth@ric.edu](mailto:callsworth@ric.edu) by April 20.

## Nursing honor society members update

RIC nursing students inducted into the Sigma Theta Tau International Honor Society of Nursing were listed in the March 5 issue of *What’s News*. The list should have also included inductees Jennifer Lynn McBride, Susan McCarter, Kimberly McDonough, Nola Ann Monti and Carla-Marie Niro. New society members were inducted through Delta Upsilon Chapter at-Large in a December ceremony held at the Quonset “O” Club in North Kingstown.

## RIC’s Early Enrollment Program receives special grant from Governors’ Association

The Early Enrollment Program (EEP) at Rhode Island College is the recipient of a one-time \$15,000 special grant from the National Governors’ Association (NGA). The allotment will be used to subsidize tuition for students who qualified for financial assistance from EEP during the 2006-07 school year. In 20 secondary schools from Woonsocket to Newport, students will be reimbursed for tuition paid to the college.

“We are extremely grateful to higher education Commissioner Jack Warner for allocating this money to Rhode Island students who have chosen to begin their college career while in high school,” said Mark Motte, assistant vice president for academic affairs. “Tuition costs and financial need are rising in our state. The NGA grant will make earning college credits more affordable for young people who might otherwise not be able to pay for the College’s rigorous EEP courses.”

Begun in 1980, the EEP is a high school/ RIC partnership that offers high school seniors and select juniors an opportunity

to earn college credits while they complete their high school graduation requirements. High school instructors, who are approved by the respective college departments, teach RIC courses during the normal school day. The College is the conduit for earning course credit as there are over 75 colleges and universities from the east to the west coast involved in this partnership of accepting RIC credits.

Providing a direct link between Rhode Island secondary schools and the RIC community, the EEP fosters an opportunity for collegial collaboration and has granted thousands of students college credits thus eliminating as much as one full semester of college work.

RIC EEP is a member of the National Alliance of Concurrent Enrollment Partnerships, which was established in 1999 to support and promote dual enrollment programs throughout the country.

For more information about the Early Enrollment Program, call 401-456-8857 or email [eeep@ric.edu](mailto:eeep@ric.edu).

## COMMUNICATION HONOR SOCIETY INDUCTS 20 NEW MEMBERS



**SOCIETY MEMBERS:** New inductees into RIC’s communication honor society include (top, from left) Lindsey Gentile, Jennie Figliola, Sarah Dereniuk, Alfred DeCiutiis, Lisa Coupe, Stephanie Conrad, Devon-Jeanne Chace, Maggie Brown, Breezy Bringhurst. Bottom, from left are Justine Olson, Kristina Wilkicki, Kimberly Violante, Anaridis Rodriguez, Andrea Pukulis, Ashley Sadlier (treasurer), Katharine Ricci (president), Lindsey Conklin (secretary), Domenic Gianfrancesco, and Dana Lesperance. Not pictured: Alicia Vanasse (vice president).

The Epsilon Chi chapter of Lambda Pi Eta (LPE), RIC’s communication honor society, inducted 20 new members at their initiation ceremony held at Lombardi’s 1025 Club on Feb. 18.

Eligible students must have completed 60 semester hours in undergraduate credit courses, have a cumulative grade point average of at least 3.0, have completed 12 semester hours in courses in communication, have a grade point average of at least 3.25

in these courses, be in the upper 35 percent of their graduating class and be currently enrolled as a full-time student in good standing with their institution.

Founded in 1985 at the University of Arkansas, LPE became the official communication honor society of the National Communication Association in 1988 and a member of the Association of College Honor Societies in 1995. There are over 400 LPE chapters worldwide.

## R.I. Geography Education Alliance workshop to showcase *The Rhode Island Atlas* April 28

The Rhode Island Geography Education Alliance (RIGEA) at Rhode Island College will introduce *The Rhode Island Atlas* as part of a workshop on Saturday, April 28 from 9 a.m. to 1 p.m. at the John Nicholas Brown Center on the campus of Brown University. The creator of the atlas, Klaus Bayr, professor of geography at Keene State College, will deliver the keynote address. The workshop is designed for practicing educators and preservice teacher candidates. Details and registration information are on the RIGEA website at [ri.net/RIGeo/rigea/home.html](http://ri.net/RIGeo/rigea/home.html).





THE EAST CRESCENT (FACADE) OF ARCOSANTI



CENTRAL, SOUTH FACING APSE STRUCTURE OF ARCOSANTI

# RIC students offered chance to build visionary city in Arizona this summer

**BY JANE FUSCO**  
*Editor*

*A new program at the College will let students earn credits while living and working in architect Paolo Soleri’s experimental city.*

Imagine having the opportunity to build a futuristic city in the high desert of Arizona, while earning college credit at the same time. Students from Rhode Island College will have that chance if they sign up for a new course that will let them live and work in legendary architect Paolo Soleri’s experimental city of Arcosanti for the month of June. Arcosanti is a prototype town for about 5,000 residents that was designed by Soleri and has been under construction since 1970. Located at Cordes Junction in Arizona, it is an alternative to the wasteful, sprawling cities of

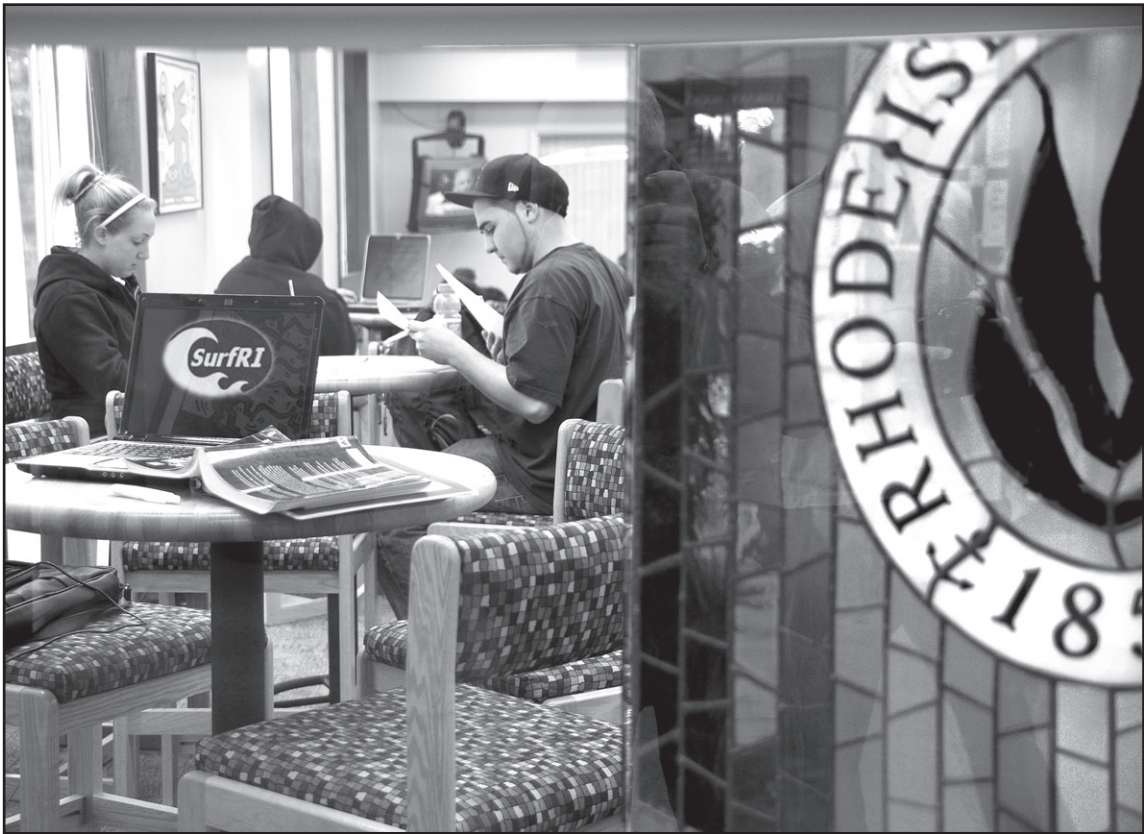
today, based on Soleri’s concept of “arcology,” architecture coherent with ecology. Arcology advocates that cities be designed to maximize the interaction and accessibility of an urban environment, minimize the use of energy, raw materials and land, reduce waste and environmental pollution, and allow for interaction with the natural environment. Students will live in the city while working on construction, cooperative living projects, archival work, and sand and metal casting. They will also be able to tour other nearby projects including Frank Lloyd Wright’s Taliesin West. “The major draw for the project is to work on Arcosanti itself,” said Thomas Cobb, RIC professor of English and organizer of the excursion. “It is also a rare chance to experience the life of Arizona’s high desert in a non-invasive environment.” Soleri exhibited at RIC’s Bannister Gallery last October after receiving the Cooper-Hewitt Lifetime Achievement Award in

Design, and invited Rhode Islanders to Arizona this summer to help build the city. Non-students are also invited to join the project. Arcosanti is entirely privately funded. The fees paid to work and live in Arcosanti will support the construction and maintenance of the experimental city. Students will also be involved in the production of Soleri’s signature windbells, which provides supplemental funding for the project. A three-credit English college course on non-fiction prose writing will be part of the experience for students. Each student will be expected to produce an essay or piece of non-fiction prose based on the experience at Arcosanti. Cost for the project is about \$2,000 and includes a \$1,125 fee to Arcosanti for room and board for the four weeks, course tuition, and a round trip ticket to Phoenix. If interested, contact Thomas Cobb at 401-456-8115; tcobb@ric.edu.

# SurfRI: six weeks of free statewide database trials

**By Tjalda Nauta**  
*Director of Adams Library*

SurfRI, a six-week trial website that will grant all Rhode Island citizens free access to more than 40 databases statewide was launched on March 6. It is a collaborative effort by the Special Legislative Commission to Study the Current Strengths and Weaknesses of Library Service in R.I. and the Database Sub-Committee appointed by the commission in January. Libraries normally subscribe to these types of databases (which include encyclopedias, business journals, health articles, newspapers, and biography, history and literature resources) at a fee that is unaffordable for some libraries. During the six weeks between March 6 and April 15, however, these databases will be completely open to all Rhode Islanders for searching and not limited by passwords, ISP addresses or library affiliation. Forty-six states already provide their citizens with this type of information access, making Rhode Island one of only four that do not.



ADAMS LIBRARY

The committee hopes to “level the playing field by providing equal access to quality information resources to all R.I. citizens from early childhood to senior citizens,” and is also hopeful that the trial will gain legislative and state support for permanent access to the databases. If funded, statewide free database access will support education, life-long learning and literacy statewide while remaining cost

effective. The large-scale purchasing will provide competitive pricing that benefits education, healthcare and business. In a press release issued by the State House on March 1, Rep. Peter L. Lewiss (D-Dist. 37, Westerly) stated that this was the “first step to improving library service throughout the state ... an opportunity for the citizens of Rhode Island to access and use these databases and determine for themselves if they find it valuable.” The press release further states that “individuals should contact their local legislators to support a budget allocation that will turn the trial into a permanent resource for all Rhode Islanders.” Server space for the trial has been provided by the HELIN (Higher Education Library Information Network) Consortium, which is made up of 10 academic and 13 health science libraries in Rhode Island and nearby Massachusetts. It can be accessed at <http://helin.uri.edu/screens/riswdmain.html>.



R I C   C O N V O C A T I O N   O F   S C H O L A R S



*Welcome to this year’s Convocation of Scholars, an annual showcase and celebration of the intellectual and creative life of the College. As you review this year’s program, you will notice an interesting mix of student, faculty and public events – each of which represents some aspect of the College’s scholarly orientation.*

*Please join us as we present an array of outstanding presentations that acknowledge the depth of study on campus.*

**Convocation of Scholars Committee:**

- Patricia Nolin ’84 M ’87**, Chair,  
Special Assistant to the President
- Jason Anthony ’99 M ’05**, Assistant  
Director Undergraduate Admissions
- Teresa Coffman**, Associate Professor  
of Music
- Joan C. Dagle**, Professor of English
- Glenisson de’Oliveria**, Associate  
Professor of Chemistry
- Denise Guilbault-Langworthy**,  
Assistant Professor of Music
- Mark T. Motte**, Assistant Vice  
President for Academic Affairs/  
Director of the Center for Public Policy
- Anne M. Pascucci**, Interim Director,  
Office of Research and Grant  
Administration
- Karen M. Rubino**, Special Assistant  
to the President for Web Services
- Jean-Baptiste Sankara**, Class of 2007
- Kathryn Gray Sasso ’69**, Director  
of Conferences and Special Events

**Monday, April 23**  
**Adjunct Faculty Dinner**  
*Student Union Ballroom*  
*6 p.m. (by invitation only)*

**Gehrenbeck Lecture**  
Frank A. Bozyan, University of Texas  
*Clarke Science 128*  
*7:30 p.m.*

**Tuesday, April 24**  
**Consumer Agency Advisory Recognition**  
For those working in health care agencies that work with students: an opportunity to learn about changes in the nursing department. A discussion on how students might be better prepared to work as health care professionals.  
*Student Union Ballroom*  
*4:30 p.m.*

**Wednesday, April 25**  
**Weathering Old Age**  
Conference sponsored by The Gerontology Center with support from the College Lectures Committee.

Topics will include senior volunteer experiences, the benefits of physical activity, the importance of remaining mentally active, and emergency preparedness for older adults.  
*Faculty Center South Dining Room*  
*8:30 a.m.*

**15th Annual Psychology Department Student Research Conference and Psi Chi Research Presentations**  
*Alger 110*  
*11 a.m.*

**Who’s Who Among Students in American Universities & Colleges**  
Reception for student honorees.  
*Student Union Ballroom*  
*Noon*

**Pi Sigma Alpha Honor Society Induction**  
Political science student luncheon.  
*The Auditorium in Roberts Hall*  
*Noon*

**Alpha Kappa Delta Honor Society Induction**  
Sociology and justice studies – announcements of departmental awards.  
*Faculty Center South Dining Room*  
*12:30 p.m.*

**Book Bags: Linking Home, School and Students’ Learning**  
*Horace Mann 064*  
*12:30 p.m.*

**Health and Physical Education Presentation**  
No-PHAT  
*The Murray Center Gymnasium*  
*12:30 p.m.*

**Student Honors and Awards English department**  
Presentation of scholarships and awards to English department majors and celebration of students who have written English Honors theses.  
*Craig-Lee 255*  
*12:30 p.m.*

**Thursday, April 26**  
**Mary Tucker Thorp College Professorship Lecture**  
“Becoming American: Public and Private Identity in the Early Republic” Presentation by Ronald DuFour, professor of history. Reception to follow.  
*Faculty Center*  
*4 p.m.*

**Friday, April 27**  
**Faculty Research and Scholarship Conference**  
A day-long conference focusing on four areas of discipline and presented by RIC faculty and students.  
*Student Union/*  
*Donovan Dining Center*  
*9 a.m.- 4 p.m.*

**Meet the Sponsors**  
Luncheon panel presentation by area sponsors of research and sponsored programs.  
*Student Union Ballroom*  
*Noon*  
*(Registration required. To register, contact Patricia Nolin, Special Assistant to the President at 401-456-9854)*

**Alliance for the Study and Teaching of Adolescent Literature (ASTAL)**  
Under the Spell of Books  
Presentation by Mark Peter Hughes.  
*Student Union Ballroom*  
*7 p.m.*

**Saturday, April 28**  
**Alliance for the Study and Teaching of Adolescent Literature (ASTAL)**  
Annual Authors Luncheon  
Speakers include: Karen Boren, Andy Frew, Peter Johnson and Kara LeReau.  
*Faculty Center*  
*Main Dining Room*  
*5 p.m.*

**Monday, April 30**  
**Honors Student Presentation and Reception**  
*Faculty Center South*  
*3:30 p.m.*

**Alliance for the Study and Teaching of Adolescent Literature (ASTAL)**  
A conversation with Jeffrey Kaplan.  
*Faculty Center*  
*Main Dining Room*  
*5 p.m.*

**Emeriti Appreciation Evening**  
*Student Union Ballroom*  
*5:30 p.m.*  
*(by invitation only)*

**Tuesday, May 1**  
**Exhibit of Resource Units: Teaching and Learning Social Studies**  
*Henry Barnard 214*  
*10:15 a.m.*

**Wednesday, May 2**  
**Literacy in Action: Reading/ Language Arts Portfolio Exhibit**  
*Horace Mann 185*  
*8:30 a.m.*

**Cap and Gown Convocation**  
*The Auditorium in Roberts Hall*  
Reception to follow  
*12:30 p.m.*

Three receive Shinn Study Abroad scholarships



**Matthew Lonergan ’07**  
Narragansett, R.I.  
Political science major  
Amman, Jordan,  
Summer 2007



**Scott Stetkiewicz ’09**  
Cumberland, R.I.  
History major  
Edinburgh, Scotland,  
Fall 2007-spring 2008



**Benjamin Streeter ’09**  
West Warwick, R.I.  
Secondary education major (Spanish)  
Granada, Spain,  
Spring 2008

*A trio of RIC students will explore first-hand their areas of interest after receiving Ridgway F. Shinn Jr. Study Abroad Fund scholarships.*

The Shinn Study Abroad Fund, maintained by the RIC Foundation, provides income to support undergraduate students in planned study outside the United States. It allows any undergraduate with 30 semester hours of study at RIC who is in good academic standing in any field of study to apply. Grants are for a minimum of three months and a maximum of 24 months abroad and are of variable amounts.

The fund was created in 1987 by Ridgway F. Shinn Jr. and his wife, Clarice ’67, with the support of friends, colleagues and former students. Shinn, a professor emeritus of history whose career at the College spanned 48 years, died in December of 2006.

*See page 15 for information on the Study Abroad benefit reception following the April 21 performance of Damn Yankees.*