

What's NEWS

@ Rhode
Island
College

Vol. 2, No. 2 September 8, 1981



Carlotti, Sweet Focus On Role of New Board

President David E. Sweet and Albert E. Carlotti, chairman of the newly created state Board of Governors for Higher Education, spoke on the reorganization of the Board of Regents and its implications at the opening administrative conference and faculty-staff convocation, respectively, last week.

Both stressed changes in the wording of the powers and duties of the new board pertaining to the "elimination of duplication" in higher education.

And both pointed to the creation of an operating executive committee comprised of the presidents of the three state institutions of higher learning.

One of the expressed purposes of the changes is to eliminate costly duplication among the institutions and the "promotion of operations in the most efficient and economical manner."

President Sweet, addressing the administrative conference last Monday at the W. Alton Jones Campus of the University of Rhode Island, touched on possible areas of scrutiny by the executive committee.

(Continued on Page 2)

Movin' in

SANDY WILKIE of Tiverton (above), a sophomore, gets a helping hand from friend, Sue Morris, as she returns to RIC's Thorp Dorm. Below, Dad helps a student move into Weber Dorm for the new academic year.

(What's News(s) photos by Peter Tobia.)



Taste of China for RIC

Goodwill Visit Slated

A Youth Goodwill Mission from the Republic of China in Taiwan will pay its first visit to Rhode Island College on Sept. 18 as part of its seventh annual tour of United States colleges and universities.

Some 14 college students — eight women and six men — selected from 20 of the 100 or more colleges and universities in Taiwan will spend one day — Friday — on campus, concluding their visit with a special performance in Roberts Auditorium from 8 to 10 p.m. to which the public is invited free of charge.

The show will consist of four parts: an introduction to Chinese martial arts, Chinese folk dancing, an introduction to some traditional songs and dances as practiced in Taiwan and selections of both Chinese and American popular songs.

The visit is to promote understanding between Chinese and American youth and their cultures through meetings with Americans and American-Chinese, communication and performance.

This is the second visit to Rhode Island by the Youth Goodwill Mission. The first was several years ago, to Brown University, according to Dr. Tony Y. Teng, associate professor of history at RIC. He and Dr. William H. Lopes, executive assistant to the president, and Kathryn M. Sasso, director of conferences and special events, are coordinating the visit.

The Youth Goodwill Mission will be



visiting various colleges and universities in this country through September and October.

With the student delegation will be two professors serving as leaders and one technician. Head of the delegation is Prof. Wu Wen-hsi of the National Taiwan University. Deputy head is Prof. Li Yao-Chun from Ssu-hai College of Technology.

In addition, two escorts from the Cultural Division of the Coordination Council for North American Affairs (U.S.A. Office) are scheduled to accompany the group.

The delegation plans to arrive on campus at 11:30 a.m. to meet Dr. David E. Sweet, college president. At noon they will have lunch in the Faculty Center with a

(Continued on Page 2)

New Appointments to Faculty, Staff Are Announced

Some 30 new faculty and 13 staff appointments have been made for the current academic year, according to the Office of Vice President for Administrative Services.

Faculty appointments are:

JUDITH A. BABCOCK: *assistant professor of management.* She is a graduate of Hanover College with an M.B.A. from Gannon College, a master's and D.Ed. from Penn State University.

STEPHEN S. BARSHAY: *assistant professor of chemistry.* He has a bachelor's degree from Carnegie-Mellon University and a Ph.D. from M.I.T.

MILDRED BATES: *assistant professor of the School of Social Work.* She is a graduate of Southwestern at Memphis; holds a master's in social work from Tulane and a doctorate from Columbia University.

CHRISTINE V. BILICKI: *assistant professor of physical sciences.* She is a graduate of Indiana University and has a doctorate from the University of Nebraska.

ANNE CARTY: *assistant professor of nursing.* She is a graduate of Salve Regina College and holds a master's degree from Boston College.

ROGER D. CLARK: *assistant professor of sociology.* He is a graduate of Swathmore College with a master's and doctorate from Brown University.

SALLY GABB: *basic skills instructor.* She is a graduate of Duke University with a master's from Columbia University.

ELLEN GINSBURG: *assistant professor of anthropology.* She is a graduate of Emerson College where she holds a M.S. degree. She has an M.A. from Southern Illinois University.

CHERYL K. GOLDMAN: *instructor of art.* She is a graduate of Wheaton College and holds a master's degree from the University of Louisville.

BARBARA EBENSTEIN HANDELSMAN: *assistant professor of health-physical education.* She has a bachelor's degree from Boston University and a master's from Columbia University Teachers' College.

VALERIE HALL: *assistant professor of biology.* She is a graduate of RIC with a master's and Ph.D. from the University of Connecticut.

KATHRYN M. KALINAK: *assistant professor of English.* She is a graduate of the University of Illinois where she holds a master's degree.

HUGH LEONARD: *visiting lecturer-English.*

FRANCES LEKWART: *instructor of nursing.* She holds a B.S.N. from Houston Baptist University and a master's degree from the University of California.

PATRICIA LEWIS: *instructor of mathematics.* She holds a bachelor's and a master's from RIC.

ANGELO MARINOSCI, JR.: *instructor of art.* He is a graduate of RIC with both a B.A. and a B.S. degree and an M.A.T. also from RIC.

RAYNOR W. MARSLAND, JR.: *instructor of economics and management.* He is a graduate of RIC.

EUGENE A. MATTEODO: *instructor of political science.* He holds a bachelor's degree from Brown University, a master's from Columbia and a Ph.D. from Brown.

KENNETH A. MCVAY: *instructor of industrial education.* He holds a bachelor's, master's and C.A.G.S. from RIC.

MARGARET S. NORTON: *instructor of communications and theatre.* She holds a bachelor's degree from Mary Washington College and a master's in education from the University of Virginia.

CYNTHIA NOWICKI: *instructor of nursing.* She is a graduate of Simmons College with a master's degree from Boston University.

JOSEPH S. ROSSI: *instructor of psychology.* He has a bachelor's degree from RIC and a master's from the University of Rhode Island.

CAROL SILVEIRA: *instructor in nursing.* She is a graduate of Salve Regina College and holds a master's degree from Boston University.

ROGER A. SIMONS: *assistant professor of mathematics and computer science.* He is a graduate of UCLA with a master's degree and Ph.D. from the University of California at Berkeley.

EARL L. SIMSON: *instructor of psychology.* He holds bachelor's, master's and doctorate from the University of Massachusetts.

DANIEL WEISMAN: *assistant professor of social work.* He is a graduate of the City College of New York and holds a master's of social work from the University of Michigan.

city of Michigan.

MARY M. WELLMAN: *assistant professor of psychology.* She is a graduate of the State University of New York at Geneseo, holds a master's from the State University of New York at Stony Brook, and a C.A.G.S. and Ph.D. Long Island University and the University of Connecticut respectively.

EVELYN M. YEAW: *assistant professor of nursing.* She holds a bachelor's degree from URI and a master's from Boston College.

ROSEMARY ANDREOZZI: *instructor of mathematics.* She is a graduate of RIC and holds a master's degree in teaching from RIC.

FREDERICK KAMIN: *assistant professor of economics and mathematics.* He is a graduate of URI and holds an M.B.A. from Indiana University.

Staff appointments are:

RITA Z. BRAUDE: *assistant director-academic supervisor - Upward Bound.* She holds a bachelor's and a B.F.A. both from the University of Massachusetts, a master's of education and a C.A.G.S., both from Harvard University.

ALAN J. BROWNING: *programmer-analyst I - computer center.* He is a graduate of Brown University.

LISA DeMARIA: *acting assistant director for transfer affairs.* She holds a bachelor's and master's degree from RIC.

DEBORAH L. NEWTON: *staff assistant, communications and theatre.* She is a graduate of RIC.

JANET A. O'CONNOR: *acting assistant director for financial aid services.* She is a graduate of Providence College.

RHONDA L. PARI: *library assistant in circulation.* She is a graduate of RIC.

GREGORY N. PERKINS: *athletic therapist.* He is a graduate of the University of Rhode Island with a master's degree from the University of Virginia.

DAVID A. POON: *residence hall director.* A graduate of URI, he holds a master's from Bowling Green State University.

WILLIAM POST: *programmer-analyst II - computer center.* He is a graduate of RIC.

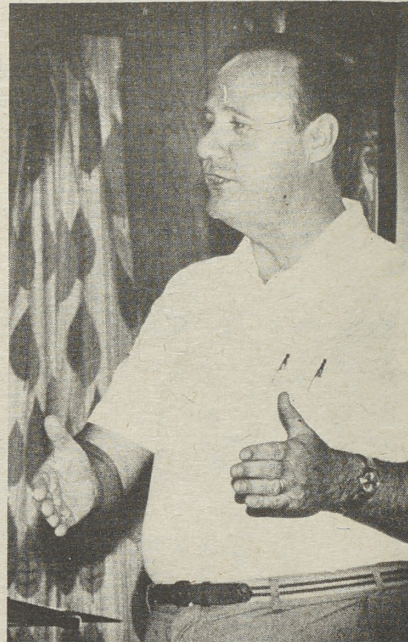
ELIZABETH RENQUIN: *library assistant in circulation.* She is a RIC graduate.

JULIE M. ROLLINS: *staff assistant-Project Options program (acting).*

CHARLES F. SWEENEY: *head coach, cross country.* He is a graduate of RIC with a master's in education from RIC.

ELAINE WILCZEK: *programmer-analyst II-computer center.* She is a graduate of RIC.

Carlotti, Sweet Focus on Role Of New Board



Dr. David E. Sweet

(Continued from Page 1)

He said duplication in such areas as computer services, admissions and dining services might be affected.

Both men stressed the frequency of meetings — at least 12 a year — that the executive committee would hold to examine operations of the junior college, the college and the university.

While neither elaborated on other areas that might be covered under the heading of "duplication," it was plain that the wording of the powers and duties of the new board is significant in its implications.

Introduced by Sweet as an "ardent advocate of the interests of higher education," Carlotti pledged his continued support of the college and its president.

All new faculty and staff members were introduced by President Sweet at the convocation, after which he called for a moment of silence for four faculty and staff members who died during the past year.

R.I.C.H. Seeks Grant Proposals

The Rhode Island Committee for the Humanities (R.I.C.H.) is accepting grant proposals from Rhode Island residents affiliated with non-profit organizations who wish to sponsor a public humanities program.

Grants are awarded by R.I.C.H. four times annually.

Proposals for funds must draw on one or more of the humanities disciplines, and must include at least one humanities scholar in the planning and implementing of the project. The deadline for proposals is Sept. 30.

R.I.C.H., an independent affiliate of the National Endowment for the Humanities, was formed in 1973 to help foster a greater public appreciation and understanding of the humanities. In its eight-year history, the organization has awarded more than one-million dollars in grants for the support of programs that combine the insights of the humanities with issues of public concern.

For more information, contact the bureau of grants and sponsored projects at 456-8228.

Youth to Bring Taste Of China to RIC

(Continued from Page 1)

group of college officials and residents of the Chinese community in Rhode Island.

At 2 p.m. there will be a joint reception by the history department and the International Student Committee in the History Lounge in Gage Hall.

From 4 to 5 p.m. there will be a free hour during which the delegation will probably tour the campus. There will be a reception at 6 p.m. in Roberts Hall Alumni Lounge.

Professor Teng said representatives from Brown University and the University

as "An Adventure in Chinese Songs and Dances," will feature in Part I (marshal arts) Tai-Chi Boxing as an example of "internal" style (concerned with strengthening muscles, breath control, harmony between one's inner self and external forces and intuitive response to attack) and Montis, Eagle, Tiger, Crane and Snake Boxing as an example of "external" style (concerned with the manipulation of bones and muscles, the rapidity of movement, and coordination of

中華民國青年友好訪問團

YOUTH GOODWILL MISSION OF THE REPUBLIC OF CHINA

of Rhode Island will be on hand to meet the delegation.

"The school system and curricula (in Taiwan) are much the same as those in the United States," Teng said.

"In fact, there are more than 900 American students currently enrolled in their colleges and universities in pursuit of the study of Chinese history, literature, art and language," he said.

Professor Teng stressed that the delegation is from the Republic of China not the People's Republic of China, which is Communist.

The performance by the students, billed

hard and soft movements.)

In Part II, five newly-created dance numbers will be introduced: "Miao Tribe Lass," "Love Songs of the New Territory," "Love Songs of Kangting," "Sword Dance" and "Lantern Dance."

In Part III, the students will recreate pastoral scenes with boys playing flutes and singing in harmony with the girls until the harvest is in and all the people in the village celebrate together.

In Part IV, songs will be sung in both English and Chinese "with the hope that the friendship between American and Chinese will be forever lasting."



What's
New(s)
at
RIC

Editor

Laurence J. Sasso, Jr.
(on leave)

Acting Editor

George LaTour

Staff

Peter P. Tobia, Photographer
Audrey Drummond, Secretary

Student Staff

Margaret M. Keane
Mark D. Poirier
Denise Moffat

WHAT'S NEW(s) at RIC is published weekly through the academic year by News and Information Services Laurence J. Sasso, Jr., director (on leave); George LaTour, acting director. News inquiries and submission of materials for publication should be directed to News and Information Services c/o The Bureau (second floor).

DEADLINE

Deadline for submission of copy and photos is TUESDAY at 4:30 p.m.

Tel. 456-8132

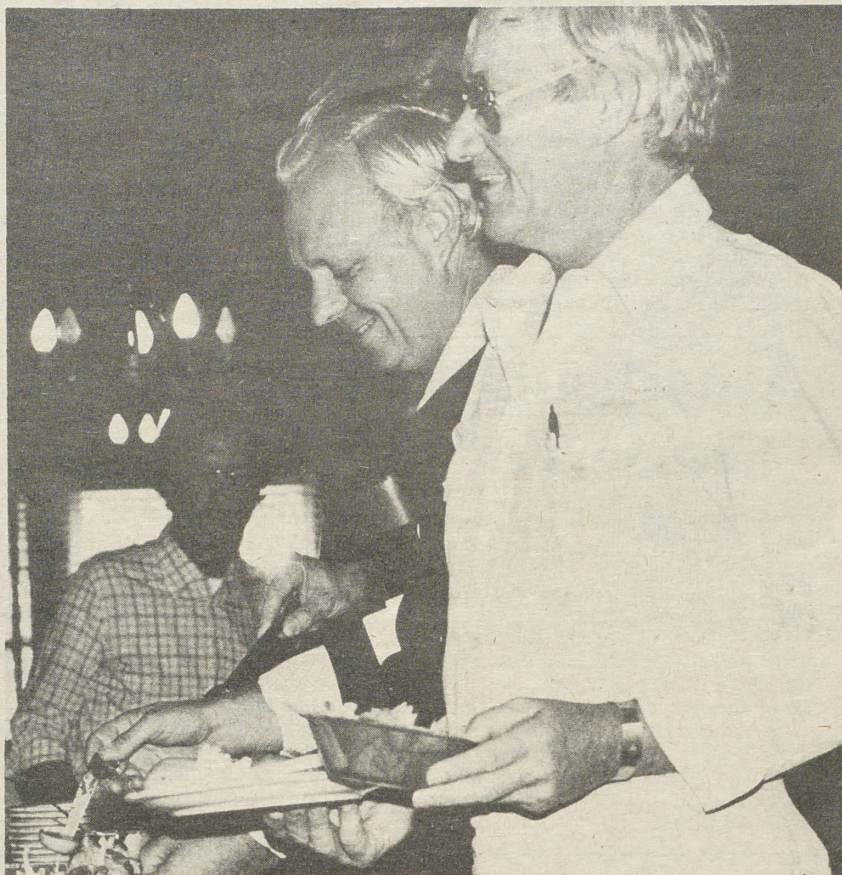
Printer: The Beacon Press

Glimpses of Faculty and Staff At Administrative Conference

WHAT'S NEW(s) Photos by George LaTour



Pat Giammarco



Nelson Wood (left) and Bill Baird.



Ellie Panichas



Jack Vickers

Grant, Contract Funds Dip to \$2.8-Million

By Margaret M. Keane

Rhode Island College received \$2,879,074 in grants and contract programs for the fiscal year ending June 30, John C. O'Neill, director of the bureau of grants and sponsored projects, announced in his annual report to the president and executive officers.

The support funds are down \$42,032 from the record-setting amount awarded the college last year — \$2,921,106.

"I think we peaked in 1980 and we're 'plateauing' now," Professor O'Neill said of the drop in funds.

However, the decrease is a "harbinger of things to come unless we all are more aggressive in seeking new sources of funds," he said.

Due to projected shifts in federal funding patterns, we're going to continue to see declines," Professor O'Neill said.

"It is going to require a more aggressive posture on the part of faculty and staff in seeking out new sources to replace lost aid."

Professor O'Neill sees little change in the amount of funds being awarded this year over fiscal 1981.

"Based on awards (received already)

for the current year," he said, "I think we'll remain at the same levels of funding for the next fiscal year, with the possibility of a modest decline.

"We're starting to feel some of the impact of the new administration's policies now in our own 1982 grants," he added.

Approved grants for fiscal 1981 include: Faculty of Arts and Sciences, 22 grants, \$680,283;

School of Continuing Education & Community Services and Urban Education Center, 10 grants, \$930,387;

School of Education and Human Development, 19 grants, \$1,024,166;

Center for Evaluation and Research, 11 grants, \$176,216.

School of Social Work, 6 grants, \$195,350;

Division of Student Affairs, 4 grants, \$519,936;

Other divisions: Library, 2 grants, \$13,372.

Approved contract projects for fiscal 1981 include:

Center of Evaluation and Research, \$48,164;

School services, \$66,085;

Continuing education, \$7,278;

Other divisions, \$75,450.

230 Attend Cable TV Conference

More than 230 representatives of non-profit and government agencies listened to Dr. James E. Davis, director of PACT (Planning Access for Cable Television), outline the potential uses and benefits of cable TV at a recent conference at Gaije Hall.

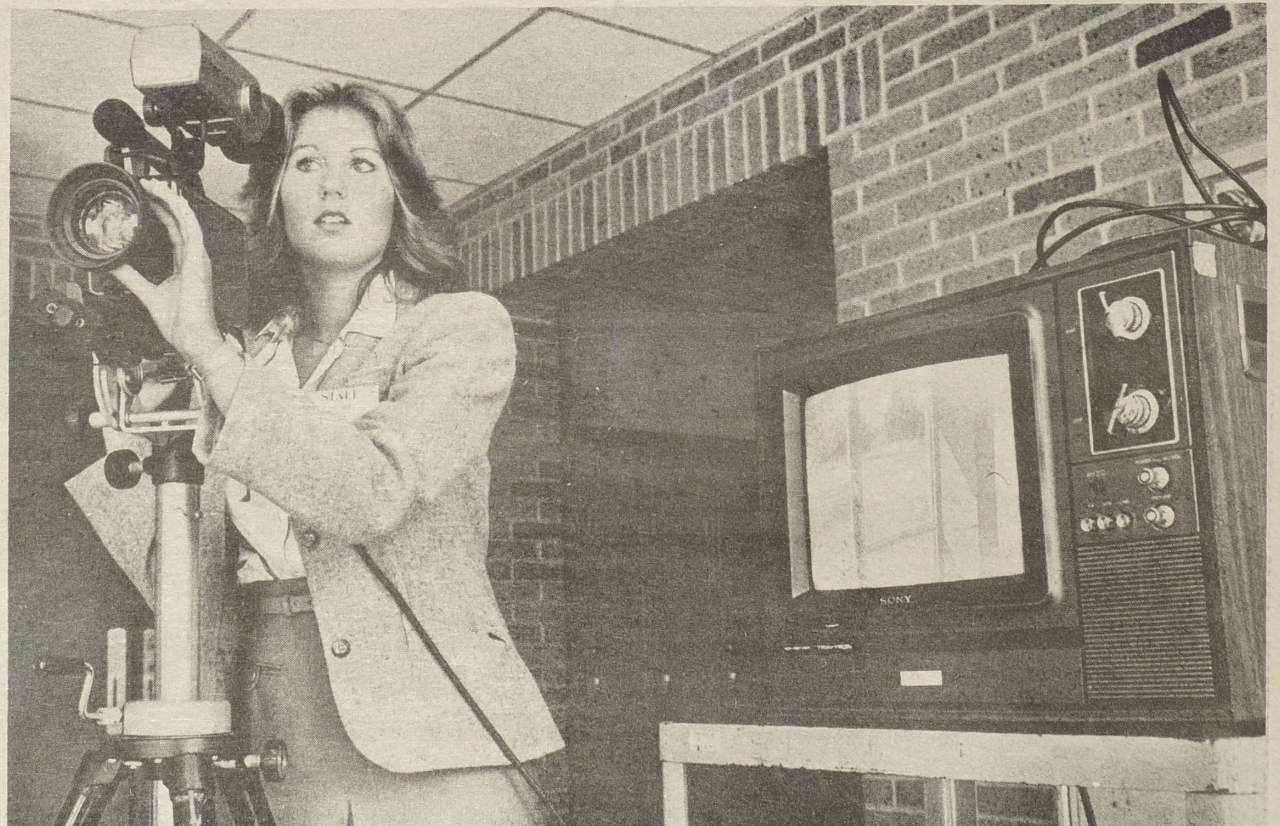
Under Public Utility Commission regulations, at least seven access channels will be made available for community use free of charge, Michael Manoog Kaprielian, PACT research director, explained.

How soon their groups and organizations can produce programs for those channels dominated the panel discussions that followed Professor Davis' presentation.

The panels — 16 in all — provided both panelists and participants time to exchange ideas and plans on how their groups and organizations can use cable as a new tool of communication.

Panelists included members of the health and hospital services community, education, women's groups, the arts and humanities, ethnic and minority groups, libraries, human and social services, the religious community and municipal and government services.

Cable TV use by each of the groups was addressed during morning and afternoon sessions of the conference.



ROLL IT: Pat Steinman, a RIC senior in communications and theatre management, focuses television camera in demonstration at recent cable TV conference.

(What's New(s) photo by Peter Tobia)

RIC, Brown, PC to Stage First Joint Production

Rhode Island College has joined with Brown University and Providence College to present the first inter-collegiate Shakespearean Festival this fall.

Titled "A Trilogy of Kings," the multi-faceted festival will be presented at the three institutions from Oct. 28 through Nov. 8.

The festival is financed in part by grants from the Rhode Island Committee for the Humanities and the Rhode Island State Council on the Arts.

The festival will include not only elaborately staged touring productions of *Henry IV* (Part I), *Richard II*, and *Richard III*, but also lectures and essays by prominent Shakespearean scholars, a commemorative booklet of the whole event and public forums of the issues in the plays which are particularly pertinent to the contemporary milieu.

According to David Burr, managing director of theatre of RIC; Don Wilmeth, chairman of theatre arts at Brown; and John Garrity, director of theatre programs at PC, the initiators and coordinators of the project, the purpose of the festival is to awaken renewed interest and enjoyment in the history plays of the "Bard of Avon."

In addition, it will demonstrate to the Rhode Island community the educational and cultural benefit which can accrue when three institutions of higher learning join in a spirit of cooperation, the coordinators said.

"In this instance the focus is on Shakespeare; in the future who knows what other cooperative ventures could be generated," they said.

In addition to the grants received, each of the educational institutions involved is contributing to the project with both matching funds and in-kind contributions.

The festival calendar includes the production of each play on the campus of each institution.

Richard II will play at RIC on Oct. 30; *Henry IV* (Part I) on Nov. 5 and 6; *Richard III* on Nov. 7 and 8.

The purpose of touring from campus to campus is at least threefold: to expose each campus audience to the theatre program of the other two institutions; to foster future appreciation of and cooperation between the other institutions; and to give the student actors and technicians the additional educational

experience and training concomitant with touring.

Highlighting the series of lectures, essays and forums will be presentations by such internationally known Shakespea-

rean scholars as Jan Kott and Charles Shattuck.

Scholars from each of the local participating institutions will include Drs. John Schroeder and Don Wilmeth of Brown; Dr. Rene Fortin of PC and Dr. Robert Comery of RIC.

The essays and lectures will focus on Shakespeare's impact on dramatic literature, the art of acting, and philology and the philosophy of language.

Also to be discussed will be such topics as: the relationship between Elizabethan and contemporary drama; the intellectual, moral and ethical issues that emerge from Shakespeare's plays; and the relevancy of these issues to the present-day audience.

The commemorative booklet will include a brief synopsis and analysis of Shakespeare's history plays as well as a chronicle of the production of Shakespeare's plays in Rhode Island by various theatrical groups.

For further information, contact Dr. P. William Hutchinson, director of theatre publicity, at Ext. 8270.



Shakespeare Festival: *A Trilogy of Kings*

American Band to Present Concert of R.I. Marches

Dr. Francis Marciniak, professor of music, will direct the American Band in the third annual Concert on the Lawn at the John Brown House in Providence on Sunday, Sept. 13, at 2 p.m.

"Rhode Island in 2-4 Time" will feature marches with Rhode Island themes including "The Bristol March" by Oliver Shaw, an early 19th Century Providence composer, organist and choirmaster. Also included will be "The Soapine March" and "Captain Draper's March" by David Wallis Reeves, who conducted the band from 1866 to 1900.

The nation's oldest continuing band, the American Band was established in 1825 as the Providence Brass Band. When it was chartered in 1837, the name was changed to the American Brass Band of Providence.

The concert is being co-sponsored by the American Band and the Rhode Island Historical Society. Admission is \$2 for adults and \$1 for children 12 and under.

The John Brown House, headquarters of the historical society, is at Benefit and Power Streets on the East Side of Providence.



Faire Ladies

RIC DANCERS in the 7th annual Florentine Faire, sponsored by the Providence Inner City Arts Council, are (left to right) Paula Dimeo, Susan Petricone, Clare Dussault and Dacia Votolato. Calling themselves "Choreolus," which means the ever constant flow of the wind, they are

performing a Renaissance dance celebration of an impending marriage of one of the peasant girls. Choreographer is Nola Rocco (not pictured), also of RIC. The faire will be held Sept. 12 and 13 at Lincoln Downs, Lincoln.