

No butts about it:

Rhode Island College's Smokeout calls for smokers to dampen the fire

by Lisa Marie Cashman

This is your chance folks!

All of you avid chain smokers have the opportunity to reap the benefits of the support and encouragement forthcoming from the Great American Smokeout being conducted Nov. 19-20 on the Rhode Island College campus.

With the help of the Office of Health Promotion and several dedicated non-smokers, smokers have the chance to make a serious commitment to putting out the fire and clearing the smoke from their lungs.

The two-day annual event this year has even more significance for college employees who smoke since Rhode Island College now is considered a "non-smoking" campus according to a policy adopted recently (and published in *What's News*).

The Smokeout here will feature a special lunchtime broadcast by WXIN, the student-operated radio station, "live" from the Donovan Dining Center on Wednesday. Joining the WXIN team will be former alumnus and DJ for WPRO-FM, Tony

Mascaro.

Putting a little magic into lunchtime on Thursday will be magician Bill Brandt, who will be featured in a one-hour magic show starting at noon at Donovan.

Other events planned include balloon and flower give-aways to all those attempting to quit, a free raffle, survival kits containing tips on how to quit smoking, and hard candies to be substituted for cigarettes.

Linda Todd, coordinator for the college Smokeout campaign, says that they are en-

couraging everyone in the college community to quit smoking for at least 24 hours, and/or to encourage others to quit.

"Quitting smoking is one of the best health safeguards you can adopt," assures Todd. "If you can quit for a day, it's possible you might quit for good," she adds.

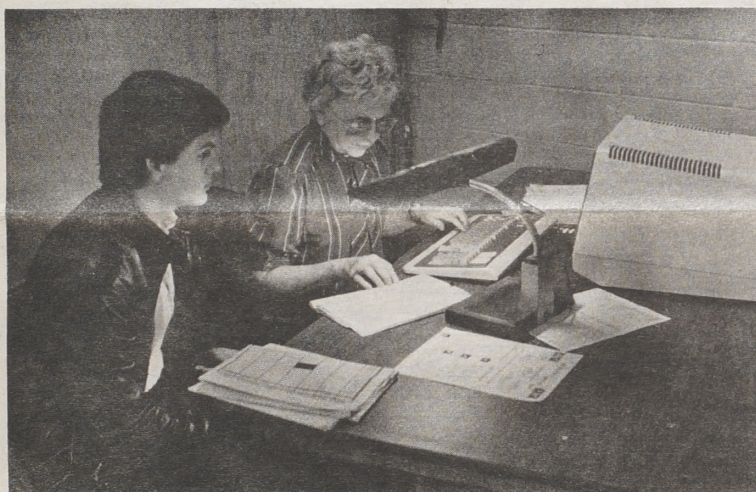
The Office of Health Promotion is sponsoring the event in cooperation with the American Cancer Society. Other supporters of the campaign here include WXIN, the American Marketing Assn. chapter, and Student Programming.

What's

NEWS

@ Rhode Island College

Vol. 7, No. 12 November 17, 1986



NEW REGISTRATION procedure begins at Rhode Island College as Helen Kilduff assists a student get his courses via the college's computer system. Registration began Nov. 12 and will continue through Nov. 25. For first time college is registering students in November rather than January. Bills will be mailed Dec. 1 and will be due Dec. 18.

Pulitzer Prize-winning poet Maxine Kumin to give reading

Maxine Kumin, winner of the 1973 Pulitzer Prize for Poetry for her *Up Country*, will give a poetry reading Thursday, Nov. 20, at 3:30 p.m. in Rhode Island College's Fogarty Life Science Building 050.

The reading -- free and open to the public -- is being sponsored by the college English department, the Writing Center and the College Lectures Committee.

"A Poetry Reading by Maxine Kumin" is designed to demonstrate to a wide audience -- to students, colleagues and the general public -- the importance of creativity to the development of our society. As an American poet, Kumin is renowned as an expert writer who possesses a notable drive for survival," according to a promotion piece.

In addition to her poetry -- since 1961 she has written eight books of poetry -- Kumin has written four novels, including *The Abduction* (1971) and *The Designated Heir* (1974), a collection of short stories, another of essays and numerous children's books.

In addition to the Pulitzer, Kumin has to her credit a 1967 National Council on the Arts fellowship, and The Eunice Tietjens Memorial Prize of *Poetry Magazine*.

She has taught at Columbia, Brandeis, Princeton and Bucknell universities, and is currently a visiting lecturer at the Massachusetts Institute of Technology.



POET MAXINE KUMIN

Study shows impact of colleges on economy

Rhode Island College does its part

By the most conservative estimate in a study recently presented to the Rhode Island Board of Governors for Higher Education by the state's Office of Higher Education, Rhode Island College annually contributes \$15.7 million to the Rhode Island economy.

Looked at another way the figure becomes \$36.7 million.

These and other illuminating statistics regarding the impact the state's 11 public and private institutions of higher education have upon the Rhode Island economy are contained in a report presented to the board on Oct. 23.

An updated version of the 1982 impact statement assembled in conjunction with the work of the Rhode Island Strategic Development Commission (whose proposals were published as *The Greenhouse Compact*), the report declares that education is a "major industry" in Rhode Island.

Dr. Lenore DeLucia, director of institutional research and planning at the college, authored the original study. She points out that "education is big business in Rhode Island," second only to the jewelry industry in what it contributes to the economy.

study presented to the Board of Governors, if the multiplier effect had been used the impact of higher education on Rhode Island's economy has been estimated at between \$1.4 billion and \$2.1 billion.

In compiling the report DeLucia explains that only data which were commonly available from all of the state's colleges and universities were used in reaching conclusions. Information collected by the Higher Education General Information Survey (HEGIS) formed the basis of the report's analysis of revenue sources.

Such individual categories as tuition and fees, grants and contracts, endowments, auxiliary enterprises, and sales and services of educational activities were gleaned from the HEGIS' financial statistics report.

Personal spending by students and by visitors coming into the state because of the colleges and universities was also estimated.

Data from studies conducted by Brown University, Salve Regina College, Winthrop College in South Carolina and the University of New Hampshire were used to project figures on personal spending.

The report estimated that each college student in Rhode Island on the average

'Education is big business' in Rhode Island'

—DeLucia

"During the 1985-86 year, the direct dollar impact of [the] schools was between \$400 million and \$600 million, depending on the degree of conservatism used in the calculations," the report states.

The study looks at the money brought into the state by individual colleges and universities so that their contributions to local communities as well as the state can be estimated.

In assessing the impact the report does not use a multiplier effect, something many such studies use.

Studies which use multiplier effects assume that direct expenditures of money result in additional recycling of those first time expenditures.

If the multiplier effect (as defined by the U.S. government) were applied it is figured that every dollar spent each year in connection with higher education in Rhode Island would have the impact of \$2.53. Based upon the direct impact calculated in the

spends \$3147 annually. It also was estimated that the average expenditure by visitors to Rhode Island colleges and universities is \$281 per out-of-state student.

The report acknowledges that many visitors also come to area colleges and universities for reasons having nothing to do with out-of-state students. The ratio to out-of-state students is used as a conservative index of the impact.

Approximately 69,500 students are enrolled in the state's colleges or universities. Of that number about 42,500 are Rhode Island residents and 27,000 are out-of-state students. About 43,500 are full-time students and 26,000 are part-time.

The difference between the two figures suggested for Rhode Island College's economic impact above is the difference between including monies spent by in-state students on tuition and fees and excluding those monies.

(continued on page 3)

'Third World Women' is topic Nov. 24

Dr. Carolyn Fluehr-Lobban, professor of anthropology at Rhode Island College, will address the topic of "Third World Women" next Monday, Nov. 24, in Clarke Science 128.

Her talk represents the fourth this semester in the lecture series on "Under-represented Women."

Professor Fluehr-Lobban has traveled throughout the world in pursuit of her studies in anthropology. She lived for a time in the Sudan and worked at the University of Khartoum as a research associate. She has served as president of the Sudan Studies Assn. and holds membership in the Middle East Studies, the African Studies, and the American Anthropological associations, among others.

She has lectured and published widely.

The series is being sponsored by the College Lectures Committee, the Women's Studies Program, and the departments of anthropology, counseling and educational psychology, economics and management, and psychology and social work.

The next segment in the series will be Feb. 11 when the topic of "Self Concept and Identity of Black Women" will be discussed.

To discuss applied math

Dr. Peter J. Costa of Northeast Research Asso. will address the Rhode Island College Mathematics/Computer Science Club on Wednesday, Nov. 19, at 1 p.m. in Gage Hall 374 on the subject of "Opportunities and Caveats in Applied Mathematics."

Costa, who has also worked at the Massachusetts Institute of Technology's Lincoln Laboratories (Star Wars research), will be discussing what it is like to be an applied mathematician in a consulting firm. In this regard, he will discuss the kinds of problems or challenges one might be assigned as well as those things of which one should be aware.

His talk is free and open. Refreshments will be served.



JAMES TURLEY

Dean Turley appointed

Dr. James D. Turley, dean of the School of Education and Human Development, has been appointed to the School/College Relations Committee of the New England Association of Schools and Colleges (NEASC) to fill the unexpired term of President Kenneth Ryder of Northeastern University on this committee of the regional accrediting agency.

The committee is chaired by President Richard P. Traina of Clark University in Worcester, Mass. Its mission is the development and improvement of school-college relations "through collaborative and articulation efforts," says the dean.

The committee advocates and fosters more cooperative relationships between schools and colleges to improve the general educational programs and strengthen the curriculum at both levels, according to Dean Turley.

It is also concerned about improved preparation of high school students for college and increasing the completion rates of college students.

Dean Turley has long been active in school-college relations, having conceived and designed the Early Enrollment Program at Rhode Island College in 1979 when he was chair of the Department of Secondary Education.

He has served on numerous committees and boards at the state and regional level on matters of "school-college articulation."

Last year he was the team leader on a project for NEASC and the College Board to design academic dialogues between selected secondary schools and colleges in the six New England states in English, math and science. NEASC has submitted the proposal for funding to the Matsushita Foundation, as well as other funding sources, and the project is to begin in the near future, reports Dean Turley.

Do you need...

1983 SUBARU GL: automatic, blue 4-door sedan, air, AM/FM cassette, 50,000 miles. Mint condition! \$4,700 or best offer. Call 949-4199 or 232-1255.

ROOMS TO RENT: Would share all utilities, house in Cumberland (11 miles from campus). Two rooms -- 1 single, 1 double -- furnished, linen provided, share bath, cooking privileges. Call 456-8071 days or 723-7077 evenings.

Notice

What's News at Rhode Island College has not been as substantial as usual for the past two or three issues. The staff has been working together with other members of the college's Advancement and Support Division to produce a special publication commemorating the inauguration of Dr. Carol J. Guardo as seventh president of Rhode Island College. The inaugural publication will reflect the very special mood of celebration and commitment to the future of the college and its people which the inauguration created.

What's News at Rhode Island College will soon return to its usual eight page format.

SECCC lists raffle winners

Incentive prizes for those contributing to the third annual State Employees Combined Charitable Campaign (SECCC) were drawn on Nov. 6.

Anyone donating to the SECCC received one raffle ticket. Those choosing to give through payroll deduction got three additional tickets and those who gave before Oct. 29 got two more tickets.

The prize winners are listed below:

SECCC Incentive Prize Winners

A. Patrucco, "all you can eat prime rib buffet" from the Marriott Hotel; **D. Janson**, framed Ceba-Chrome print (Japanese Collection) donated by Angelo Marinucci; **D. Pleniadz**, gift certificate from Friendly Fruit and Deli; **P. Gath**, two tickets to Showcase Cinema donated by State Employees Credit Union; **M. F. Taylor**, two albums from the American Band; **C. Smolski**, Sunday brunch for two at the Marriott Hotel; **C. Rickabaugh**, Rhode Island College sweatshirt from the Rhode Island College Bookstore; **B. Every**, four hours of limousine service from JFF III Chauffering, Inc.; **E. Dwyer**, green plant from Pasquarelli Flowers; **E. Perry**, dinner for two at Hemenway's donated by the President's Office; **P. Sherlock** and **J. Magyar**, family passes to Rhode Island College basketball donated by Rhode Island College athletics department.

Also winning prizes were: **J. Malone**, gift certificate from LaSalle Bakery; **Ticket Number 167863** (no name on ticket), grapevine wreath; **T. Pustell** and **T. Genereux**, two tickets each to the Nov. 14 and Nov. 15 performances of *Romeo and Juliet* by the Rhode Island College Theatre Company; **R. Prull** and **P. Ponton**, one month memberships from Accent on Fitness; **C. Walton**, \$25 cash donated by Rhode Island College Staff Association; **J. McKendall**, five pound tray of cookies from DeLuise Bakery; **R. Prull**, decorative wreath donated by S. Viens; **D. Silvestri**, two tickets to the holiday gala donated by the Rhode Island College Campus Center; **P. Brennan**, free sitting for a 5 X 7 portrait from Images photographers; **E. Dwyer**, \$25 cash from Local 2879, Council 94; **T. Pustell**, two tickets each to the Nov. 25 concert by Barbara Cooke, the Dec. 5 performance of the Wagner Choral (four tickets), the Jan. 27, 1987 production by

the National Theatre of the Deaf and the March 12 concert by the Lucinda Childs Dance Co., all donated by the Rhode Island Performing Arts Series; **R. Maddox**, needlework handbag; **J. Medeiros**, wristwatch donated by the Rhode Island College Bookstore; **A. Antosh**, two hours free moped use (summer of 1987) from Newport Rent-a-Ped; **J. Botelho**, \$25 cash from Rhode Island College AFT; **P. McClintock**, **D. Bresette** and **J. Hickox**, three pizzas from Campus Pizza.

Others receiving prizes in the incentive raffle were: **E. Brouillette**, weekend for two from the Holiday Inn; **T. Genereux**, four tickets to the winter concert of the Rhode Island College Dance Company; **E. Anthony**, **W. Lopes**, **J. Malone** and **J. Albright**, one gift certificate each from Wes' Rib House; **R. Prull** and **P. Ponton**, gift certificates for two tanning sessions from Al's His and Hers Salon; **H. Starr**, gift certificate from the Little Inn; **Jas. Bucc, liquor basket (including donations from M. Nocera, R. Comerford and Casali Liquor); **E. Magyar**, two tickets to the Rhode Island Philharmonic; **A. Koluch**, \$50 bond from Lambers CPA Review; **S. Richardson**, one eight-inch cake from Pastiche; **D. Bresette**, gift certificate for LaSalle Bakery donated by Rhode Island College Housing; **A. Carnevale**, fruit basket from Armando's.**

In addition, raffle prizes were won by the following: **N. Gendreau**, plant from the Rhode Island College Greenhouse; **S. Mazyck**, gift certificate from Smith's Restaurant; **J. Custer** and **G. Davis**, polaroid cameras from G. Bonaminio; **L. Buonomano**, **J. Mitchell**, **D. Coons**, **C. Rickabaugh** and **A. Murphy**, one pizza plus beverage each from Domino's Pizza; **P. Giammarco**, Rhode Island College necktie donated by Rhode Island College Alumni Association.

Also winning raffle prizes were: **A. Scanlon**, two tickets to *Stop the World* . . . from Providence Performing Arts Center; **G. Sundberg**, gift certificate to Peaberry's; **R. Carey**, two tickets to the Nov. 8 concert of Arturo DelMoni at the Rhode Island Philharmonic; **I. Liguori**, hand-painted welcome slate donated by J. Flori; **S. Wasti**, escape weekend for two from the Biltmore Plaza Hotel; **Ticket Number 166651** (no name on ticket), two tickets from Trinity Repertory Company and **J. McKendall**, popcorn maker donated by Delta Drug.

TV show by alumnus O. Reeder to focus on capital center project

Capital Center, the \$100 million project to develop old railroad lands between the Rhode Island State House and the old Union Station in downtown Providence, will be the subject of the next Reeder Reports cable television program.

The show, produced and hosted by Rhode Island College alumnus Olon Reeder of North Providence, will look at how the various aspects of Capital Center will affect the future of downtown Providence and how it will impact the state's economy.

Among the issues which Reeder will explore will be the impact the project will have on parking, zoning, historical preservation, and the impact of the planned property tax re-evaluation and federal tax reform measures on potential development in the Capital Center.

He will also look at the river relocation project and the plans to reopen Providence's waterfront.

Reeder interviewed a number of figures prominently involved in the project for the show. Among them were James Gaffney, executive director of the Capital Center Project management team and Stanley Bernstein, executive director of the Capital

Center Commission.

The show will be broadcast via the statewide interconnect channels to all area cable services. Times and dates will be listed through the local cable outlets.

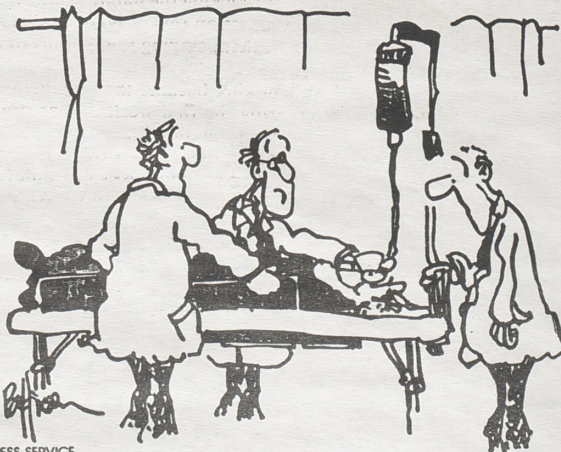
Reeder, 28, received both his master's and bachelor's degrees at Rhode Island College.

What's News

DEADLINE

Tuesday

4:30 p.m.



COLLEGE PRESS SERVICE

"IS THIS THE FIRST TIME HE HAS RECEIVED AN A ON A MIDTERM?"



What's
News
@
Rhode
Island
College

Editor

Laurence J. Sasso, Jr.

Associate Editor

George LaTour

Staff

Gordon E. Rowley, Photographer

Ellen W. Hunt, Secretary

Student Staff

Christine Albanese, Calendar

Lisa Marie Cashman, Writer

Johanna Bennett, Writer

Lisa Castro, Paste-Up

What's News at Rhode Island College (USPS 681-650) is published weekly throughout the year except during semester breaks by Rhode Island College News and Information Services, 600 Mt. Pleasant Avenue, Providence, R.I. 02908. Second Class postage paid, Providence, R.I.

Postmaster: Send address changes to, *What's News at Rhode Island College*, News and Information Services, c/o The Bureau, 600 Mt. Pleasant Avenue, Providence, R.I. 02908.

—DEADLINE—

Deadline for submission of copy and photos is **TUESDAY at 4:30 p.m.**

Tel. 456-8132

Production by
**BEACON
PRESS**

'Rhode Island Holocaust' is topic of colloquium Nov. 21st

"Exploring an Episode in Indian and Colonial American Relationships: The Rhode Island Holocaust from 1500-1700" will be the topic of an anthropology/geography department colloquium on Friday, Nov. 21, from noon to 1 p.m. in Rhode Island College's Gaige Hall 207 (Common Room).

The format calls for a brief slide presentation followed by discussion. Members of the college community are invited to attend this brown bag colloquium and join in the discussion.

The "holocaust" referred to is known as the "contact" period when migrating Europeans first met native Americans, causing major alterations to the social activities, economic patterns and cultural symbols of the Narragansetts. Current thinking suggests that 90 percent or tens of thousands of the Narragansett people died during this period.

"The impact of this genocide is still felt among living peoples throughout the Americas," say anthropologists.



OSKY CASCONO

'The best thing I could have done for myself'

by Lisa Marie Cashman

Five years ago, Osky Cascone, director of the Nursing Learning Lab, was a chain smoker.

She smoked three packs of cigarettes per day which equals 60 cigarettes. Multiply that by 365 days and the total for the year is 21,900!

Consider that when Cascone quit smoking in January of 1981, the price of a carton of cigarettes was approximately \$9. That's \$1,081 to be exact.

After having burned numerous holes in her clothing and her kitchen floor, Osky decided it was time to quit.

"I had such a guilt trip because I knew that teaching health education and smoking just didn't mix," she says, remembering the reasons why she decided to quit.

"I'd be teaching a class of nursing students and suddenly have the urge to run out of the class to the nearest store to buy a pack of cigarettes," she confesses.

Osky also had a very personal reason for kicking the habit. Her husband died from a coronary attack. This made her question the "advantages" to being a smoker and she came up empty. For her, then, finding the reasons to quit was not difficult.

Finding the will power to give up smoking became the real challenge.

Cascone started hypnosis therapy during the first week of Christmas vacation in 1980. The program stressed gradual elimination.

"I was not to smoke more than a pack a day," she explains.

But, by the time the last session had rolled around, Osky had quit for good, although she admits there were some habits associated with smoking that still lingered.

"My hand would automatically reach for a pack either on my desk or my kitchen table," she relates as she mimicks the motion. Otherwise, she claims to have "no desire to smoke anymore."

"Quitting," says Osky Cascone, "was the best thing I could have done for myself."



AT THE ANNUAL FUND PHONATHON Yvonne Prevost of Fall River, a member of the Class of 1981, solicits donations to the annual fund from fellow graduates of the college. Phonathon began Nov. 10, continues through Nov. 20.

AASCU publications examine role of public institutions in economic development

(AASCU) States are turning more often to public colleges and universities for help in achieving economic development goals. Institutions, thus, must be aware of development practices across the nation.

To meet this need, the AASCU has published two new resources: a report on *The Higher Education—Economic Development Connection: Emerging Roles for Public Colleges and Universities* and a companion volume of readings, *Issues in Higher Education and Economic Development*.

As stated in the report, "College and university involvement in economic development works most effectively when it supports and complements an institution's primary missions."

Public college and university leaders must analyze the uniqueness of their institutions when deciding how best to use institutional resources. This individualized approach insures effective institutional involvement in economic development.

The report, *The Higher Education—Economic Development Connection*, was prepared for AASCU by SRI International under a cooperative agreement with the Economic Development Administration

In the *Issues* book, educators, government officials and business people grapple with the difficult questions that arise when academic institutions become involved with the profit-making sector such as:

- Who should take the initiative?
- What is the proper role for a higher education institution?
- Does university intervention give one business unfair advantage over another?
- Who owns knowledge?
- How can faculty be rewarded for sharing their expertise? How can universities keep faculty from being lured away by the larger salaries in business and industry?
- How can community needs best be incorporated into planning for economic development?

These articles are based on presentations made at the 1986 National Conference on Higher Education and Economic Development.

Complimentary copies of both publications are being sent to AASCU members. Additional copies are \$20 for each two-volume set from AASCU Publications, One Dupont Circle, NW, Suite 700, Washington, D.C. 20036-1192.

★ ECONOMY

(continued from page 1)

Since it has been argued that in-state tuition and fee payments do not constitute "new" dollars in the economy one estimate (the most conservative) shows the impact without those dollars included. That is the method which yields a figure of \$15.7 million per year as the college's economic contribution.

However, a counter argument says that if in-state students were to leave the state to study they would take those dollars with them. So the report also shows the college's impact with those monies included. That figure is \$36.7 million.

DeLucia points out that "Rhode Island College doesn't have a large number of out-of-state students, but for their numbers they contribute an enormous amount to the state."

She observes that the out-of-state student

pays about three times as much in tuition and fees as in-state students and they also use the auxiliary services such as food service and the bookstore more than in-state students.

For example, the report shows that out-of-state students at Rhode Island College pay \$2 million in tuition and fees. Also in the category of personal spending by students, out-of-state students spend \$1.7 million each year.

The report also estimates that 90 percent of all college, faculty and staff spending in the public sector of higher education remains within the state.

The economic impact of the college's and universities has increased 27.8 percent between DeLucia's original study and the current report.

Tony winner Barbara Cook to perform here Nov. 25th



BARBARA COOK

Tony award-winning Broadway musical performer Barbara Cook will make a return appearance at Rhode Island College's Roberts Hall auditorium on Tuesday, Nov. 25, at 8 p.m. for an evening of musical selections, including tunes from past Broadway hits.

Cook's performance marks the third concert of the season in the college's performing arts series. Her performance at RIC last season reportedly received a highly favorable audience response, prompting the return engagement.

Accompanying her will be musical director Wally Harper. Both have recently returned from a European tour.

Cook is a veteran of such Broadway shows as *Carousel*, *Oklahoma* and, more recently, *Follies*. She created the now famous roles of Cunegonde in Leonard Bernstein's *Candide*, and Marian in the hit *Music Man* for which she won the Tony award.

All seating is by reservation only.

Roberts box office opens Monday, Nov. 17, at 10 a.m. and remains open daily until 4 p.m. Tickets are \$12 general admission; \$8 for Rhode Island College faculty and staff, non-Rhode Island College students and senior citizens, and \$3 for Rhode Island College students.

Call 456-8144 for reservations and 456-8194 for further information.

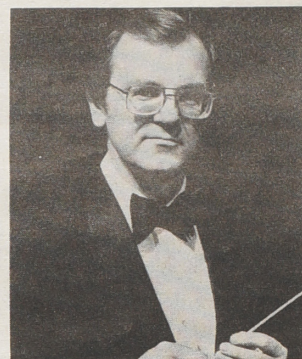
Wind ensemble to offer concert at college Nov. 23

George Washington Bridge: An Impression for Band by William Schuman will be the opening selection when Rhode Island College's 39 member Wind Ensemble offers a concert Nov. 23 at 3 p.m. under the direction of Dr. Francis M. Marciniak, professor of music.

To be performed in Roberts Hall auditorium at the college the concert will include eight other compositions.

Among the works to be presented are: *Prelude and Fugue in B-flat Major, No. 2* by Johann Sebastian Bach (transcribed by R. L. Moehlmann), *Symphonic Movement* by Vaclav Nelhybel, *The Girl With Flaxen Hair* by Claude Debussy (arranged by Michael Brand) and *Liberty Bell March* by John Philip Sousa, conducted by Daniel Coyne.

Also on the program will be: *A Festival Prelude* by Alfred Reed, *Aria and Toccata* by Richard Willis, *Overture: Saturday Market, Op. 70* by Anthony Hedges and *La Oreja de Oro (Pasodoble Torero)* by Mariano San Miguel, edited by Frederick Fennell.



FRANCIS MARCINIAK

The Nov. 23 concert is funded in part by a grant from the Rhode Island College Performing and Fine Arts Commission.

Admission to the concert is free. It is open to the public.

For more information call 456-8244.

Plays by alumnus Kris Hall to get staged reading at Barker

The Barker Playhouse in Providence will offer staged readings of two one-act plays by Rhode Island College alumnus Kris Hall on Nov. 23 at 8 p.m.

Hall, currently completing his master of fine arts degree in playwriting at Rutgers University, is presenting plays called *Taking Charge* and *At the Anarchists' Convention* at the Barker Playhouse.

Taking Charge deals with three college-age people and a young woman's struggle to declare her independence from the two men in her life. It will be directed by Cait

Calvo.

At the Anarchists' Convention is an adaptation of a John Sayles short story. It is a humorous portrayal of what happens when a small group of aging radicals from the 1930's come into conflict with the present day Sioux Falls Rotary Club.

Dr. P. William Hutchinson of the college's theatre faculty, will direct *At the Anarchists' Convention*.

Rhode Island College alumnus Richard Dulgarian will be playing the hotel manager in the play.

Kris Hall is the author of *Mindbender*, a comic mystery which was selected for production at the Kennedy Center for the Performing Arts in the national competition, the American College Theatre Festival. *Mindbender* premiered in 1983 at Rhode Island College.

Most recently it was produced in Boston during August and in Helena, Montana at the Grand Street Theater during October. Currently a reading of Hall's most recent full-length play, *The Conway Kids*, is being staged at Rutgers University.

Founded in 1909, the Barker Playhouse is one of the oldest community theatres in the nation. It has also gained a reputation as one of the most prestigious.

Each season in addition to its mainstage productions, the Barker also presents "Green Room" presentations of new works. Hall's short comedies are being staged at the conclusion of National Arts Week as part of the Green Room series. The performance is free and open to the public.

Calendar of Events

Nov. 17 - Nov. 24

Monday, Nov. 17

10 a.m. — *Career Decision Making Workshop* to be offered by the Office of Career Services. Craig-Lee, room 054. Open to Rhode Island College students and alumni. Participation is limited, so it is necessary to sign up in advance. For more information call 456-8031.

Noon to 1 p.m. — *Alcoholics Anonymous* meeting. Student Union, room 305.

1:30 to 3:30 p.m. — *Disability Support Group* to meet. Craig-Lee, room 127. Open to all students. For further information call 456-8061.

Monday-Thursday, Nov. 17-20

Noon — *Mass.* Student Union, room 304.

Monday-Friday, Nov. 17-21

The Design Show, an exhibition of award-winning graphic art from the 1986 competition held by the Art Directors Club of Boston, to be on display in Bannister Gallery, Art Center. Gallery Hours: Monday-Friday, 11 a.m. to 4 p.m.; Tuesday and Thursday evenings 6 to 9 p.m. Exhibit on display through Nov. 26.

Tuesday, Nov. 18

11 a.m. to 1 p.m. — *Health Watch Table*. Free health information and blood pressure screening available. Donovan Dining Center. Sponsored by Health Promotion.

12 to 2:30 to 3:30 p.m. — *Disability Support Group* to meet. Craig-Lee, room 127.

Noon to 4 p.m. — *Buckaroo Banzi* and *Darkstar* are films to be presented by the Philosophy Club. Suggested donation: \$1 general, 50¢ students. Philosophy Lounge, Fogarty Life Science, 120. Open to all.

2 p.m. — *Interviewing Skills Workshop* to be offered by the Office of Career Services. Craig-Lee 054.

2 to 6 p.m. — *South American Awareness Day*. "Political and Social Transformations in South America Today" to be discussed. Music and folkloric dances will be performed and Latin American food will be served. Gage Hall auditorium. Free and open to all. For more information contact the Latin American Student Organiza-

tion of Rhode Island College at 456-8543.

Wednesday, Nov. 19

11:30 a.m. to 1 p.m. — *Great American Smokeout*. WXIN, the college's radio station, to have a special broadcast with guests DJ Tony Mascaro from WPRO-FM. Donovan Dining Center.

Noon to 1 p.m. — *History Department Lunchtime Colloquium*. Earl Foell, associate editor of *The Christian Science Monitor*, to speak on "Censorship and the American Press." Gage Hall 207.

Noon to 2 p.m. — *Disability Support Group* to meet. Craig-Lee 127.

12:30 p.m. — *AIESEC weekly meeting*. AIESEC is the International Association of Students in Economics and Business Management. Alger 216A.

12:30 p.m. — *Human Resource Management Club* to meet. Craig-Lee 105.

12:30 p.m. — *Job Search/Resume Workshop* to be offered by the Office of Career Services. Craig-Lee 054. For more information call 456-8031.

12:30 p.m. — *Sigma Xi Club colloquium*. Dr. Pierre Morenon of the anthropology/geography department will speak on "Native American Land Use Practices in Rhode Island: A 4,000 Year Record of Environmental Impact." Dr. Roger Simons of the mathematics/computer science department will speak on "The Efficient Use of Fifth Generation Computers." Clarke Science, room 106.

12:30 p.m. — *The International Society of Rhode Island College* to offer a presentation on Hebrew. Dr. Deborah Barshay of the modern language department will speak on "The Evolution of Hebrew into a Modern Vernacular." A documentary about Hebrew calligraphy, written and produced by Barshay, will also be presented. Craig-Lee 102. Open to all.

12:30 to 1:30 p.m. — *Al-anon and Adult Children of Alcoholics* to meet. Craig Lee 127. Sponsored by the Office of Health Promotion.

12:30 to 2 p.m. — *Dr. Amrit Singh* to discuss "Nissim Ezekiel and Kamala Das: Two Voices in Indian-English Poetry." Craig-Lee 265.

1 p.m. — *Dr. Peter Costa to speak* on "Opportunities and Pitfalls in Applied Math." Gage Hall 374.

1 to 2 p.m. — *Anchor Christian Fellowship*. Weekly meeting. Student Union 322.

1 to 2 p.m. — *Brother to Brother* to present a talk on "Girl Friend Abuse." Horace Mann 192. Sponsored by the Women's Center.

1 to 2 p.m. — *General Information Session* for students interested in the Cooperative Education Program. Alumni House, second floor. For more information call 456-8134.

2 p.m. — *Rhode Island College Chamber Music Series*. Lyric soprano Joanne Mouradian to perform. Her program will include selections from G.F. Handel, J.S. Bach, Carlos Pedrell, Gomis, P. Ganatchian, K. Alemshah and W.A. Mozart. Roberts Hall, 138. Free and open to all.

7:30 p.m. — *Human-rights activist Dick Gregory to speak*. Gage Hall auditorium. Free and open to all. Sponsored by Harambee.

Thursday, Nov. 20

11:30 a.m. to 1:30 p.m. — *Great American Smokeout*. Magic show to be presented by magician Bill Brandt. Donovan Dining Center.

Noon to 4 p.m. — *Dr. Strangelove* and *A Clockwork Orange* are films to be presented by the Philosophy Club. Suggested donation \$1 general, 50¢ students. Philosophy Lounge, Fogarty Life Science, room 120. Open to all.

1 p.m. — *Interviewing Skills Workshop* to be offered by the office of Career Services. Craig-Lee 054. For more information call 456-8031.

2 to 4 p.m. — *History Symposium* to be offered by the history department.

"Scholarship and Teaching in Higher Education: A Question of Choice?" will be the topic. Gage Hall auditorium. For further information call 456-8039.

3:30 to 5 p.m. — *Poetry reading by Maxine Kumin*. Fogarty Life Science 050.

Friday, Nov. 21

Noon to 1 p.m. — *Anthropology/Geography Department Colloquium* "Exploring an Episode in Indian and Colonial American Relationships: The Rhode Island Holocaust from 1500 to 1700" to be the topic of a slide presentation and informal discussion. Gage Hall 207.

6 p.m. — *Men's Basketball*. Rhode Island College vs. Whittier College at the Drew University Tournament. Madison, N.J.

Saturday, Nov. 22

10 a.m. — *Wrestling*. Rhode Island College at the Springfield College tournament. Springfield, Mass.

1 p.m. — *Women's Fencing*. Rhode Island College vs. Southeastern Massachusetts University. Home.

2-4 p.m. — *Men's Basketball*. Rhode Island College at the Drew University Tournament Consolation/Final. Madison, N.J.

Sunday, Nov. 23

10 a.m. — *Sunday Mass*. Student Union 304.

3 p.m. — *Rhode Island College Wind Ensemble* to perform. Roberts Auditorium. Free.

7 p.m. — *Sunday Evening Mass*. Browne Hall, upper lounge.

Monday, Nov. 24

9 a.m. — *Resume Writing Workshop* to be offered by the Office of Career Services. Craig-Lee 054. For more information call 456-8031.

Noon — *Mass.* Student Union 304.

Noon — "Third World Women" to be the topic of a talk by Dr. Carolyn Fluehr-Lobban. Clarke Science 128.

Noon to 1 p.m. — *Alcoholics Anonymous* meeting. Student Union 305.

1:30 to 3:30 p.m. — *Disability Support Group* to meet. Craig-Lee 127.