



WHAT'S NEWS

AT RHODE ISLAND COLLEGE

JAMES P ADAMS LIBR RI COL
600 MT PLEASANT AVE
PROVIDENCE RI 02908

Vol. 7, No. 28 April 13, 1987

FIPSE grant director here

To begin work on assessment of student learning

David P. Cavanagh of Medford, Mass., a Ph.D. in sociology with specialization in demography from Brown University, has joined the Rhode Island College community to oversee the implementation of the Fund for the Improvement of Postsecondary Education (FIPSE) grant and other aspects of the college's Value Added Project.



CAVANAGH

Rhode Island College was awarded \$250,000 by FIPSE last fall for a three-year period to fund the implementation of a campus-wide effort to improve undergraduate education at the college through value added assessment and the development of individualized educational plans (IEP) for each student.

As such, the college was one of only 60 to 70 nationwide chosen to receive the grant from some 2,200 applicants.

Cavanagh has been a senior programmer/analyst at The Boston Company since

(continued on page 4)

Hayes honored for promoting literacy

Rhode Island State Council of the International Reading Association honored Rhode Island College's Kathleen R. Hayes last week at an award reception in Alumni Lounge.

Hayes, director of the Adult Academy of Basic Skills here, was cited for her work promoting literacy.

The citation presented her noted her "significant contribution to the promoting of literacy in Rhode Island" through the academy and its program of free, individual instruction to undereducated adults in reading and writing.

Hayes, in addition to her position as academy director, has chaired the Rhode Island Adult Literacy Council and is president of Challenge Education Associates, Inc., a resource of educational consulting, teaching and tutorial services to businesses and individuals needing assistance in various literacy skills.

Her professional experiences range from working with children to adults of retirement age. She has taught in the elementary grades, been a part-time faculty member at both the University of Rhode Island and Rhode Island College, a graduate teacher assistant at Syracuse University, and director of the Rhode Island College Elderhostel program, an international network of residential college programs for retirement-age adults.

Hayes has also spoken on literacy at numerous conferences sponsored by various educational organizations.

She resides with her husband, Kevin, and family in Warwick.



HAYES

Alumni to honor six May 14



DANIEL O'GRADY



NOREEN ANDREOLI



MYRL HERMAN



AUDREY OLMSTED



GARY PENFIELD



ALICE GIBNEY

Rhode Island College Alumni Association will honor the author of over a dozen school desegregation plans nationwide, a Rhode Island Superior Court justice, the college's "father" of athletics, the vice president for student affairs, a professor of communications and theater, and the immediate past president of the association on May 14.

The annual event will take place on campus with a reception at 6 p.m. and dinner scheduled for 7, according to Holly L. Shadoian, director of alumni affairs.

Shadoian is again planning to use *Culinary Capers*, the association's cookbook, for the dinner menu. Tickets to the event, which is open to the public, are \$15. Deadline for reservations is May 8.

Checks made payable to the alumni association should be sent by that date to the Rhode Island College Alumni Office, Providence, RI 02908. Reservations may also be made by phone at 456-8086.

Alumni Service

Myrl Herman, professor of education, will receive the Alumni Service Award.

Beginning in 1960, and for nearly 19 years, Herman served as an expert witness and consultant to the court in school desegregation cases.

He developed desegregation plans in more than 13 cities, including Nashville, Tenn., which required 10 years of his service.

In the early years, his service was provided in communities that were hostile to desegregation, often at great risk to his personal safety.

He recruited and trained two more faculty members who developed plans for another 20 cities. Herman, therefore, probably influenced the course of school desegregation in more cities than any other individual.

In honoring him, the association cites the "tremendous service he has rendered to the education of minority children and the cause of social justice in the country."

Achievement Award

The Charles B. Willard Achievement Award -- named for the late president of the college -- will be accorded to the Hon. Alice B. Gibney of the Class of 1969.

Gibney, an associate justice of the Rhode Island Superior Court, is Rhode Island College's highest ranking alumna in the justice system.

She earned her law degree in 1972 from Catholic University. From 1974 to 1978 she was in private practice with the firm of Anderson, Henning and Anderson. In 1979, after one year as assistant United States attorney for Rhode Island, Gibney joined the firm of Boyer, Reynolds and DeMarco.

Former Gov. J. Joseph Garrahy put her on the Worker's Compensation Commission in 1982. Two years later, she was appointed an associate justice.

Gibney was awarded an honorary doctor of laws at the college's 1986 winter commencement and was one of 24 outstanding graduates honored as part of the alumni association's inaugural display last fall.

Lifetime Achievement

Daniel O'Grady, Class of 1935, was the college's first paid athletic director and coach and is considered by many as the "father" of athletics at Rhode Island College.

He brought basketball up to collegiate level and started and coached varsity baseball, track, tennis and golf.

In 1937 he produced the only varsity football team in the college's history.

A Scoutmaster during the Depression and World War II, O'Grady went on to LaSalle Academy where his track and cross country teams rang up an impressive string of 23 consecutive state titles.

He then moved on to Danbury, Conn., to coach and teach. After 50 years of coaching and 44 years of classroom teaching in Rhode Island and Connecticut, the town of Danbury dedicated its new \$280,000 track and field complex to him.

O'Grady will receive the association's Special Award for Lifetime Achievement.

Staff Award

The association's Staff Award will go to Dr. Gary M. Penfield, vice president for student affairs and dean of students.

A member of the Rhode Island College administration since 1976, Penfield began his

tenure as dean of students and, in 1979, was appointed to his present position.

A graduate of SUNY at Albany, he holds a master's degree from there as well, and an Ed.D. from the University of Connecticut. He was dean of student groups for four years at the University of Cincinnati before coming to Rhode Island College.

Penfield is active in community affairs, serving as member and treasurer of the Rhode Island Baptist Education Society and the founder and vice president of the Smithfield Youth Soccer Association.

The alumni are citing Penfield for being the driving force behind the revitalization of the college's student affairs division.

Faculty Award

The 1987 Faculty Award goes to Dr. Audrey P. Olmsted, assistant professor of communications and, for the past nine years, faculty advisor to the college's Debate Council.

Under her guidance, the council has built up an impressive record. Two months ago, it took top honors from 57 entrants at the McGill University Tournament in Montreal, Canada, where it was the first debate team from the United States to win this, the oldest parliamentary debate in North America since Harvard took it in 1976.

The Rhode Island College debaters went on to best Harvard University from a field of 40 teams, winning the recent Providence College Parliamentary Debate Tournament, and then added the Oxford Debating Union from Oxford University, England, to their list of the vanquished.

A graduate of the University of Northern Iowa, Olmsted earned her Ph.D. from Indiana University.

Alumna of Year

Noreen Andreoli, past president of the alumni association, will receive the Alumna of the Year Award. She is a member of the Class of 1980.

A graduate of Roger Williams College, she holds both a master's and certificate of advanced graduate study in counseling from Rhode Island College.

(continued on page 4)

College to say 'thanks' to student intern employers

Rhode Island College will say "thank you" at an April 23 breakfast to some 40 employers who have participated in its student internship programs.

Phyllis Hunt of the college's Financial Aid/Student Employment Office reports that about 50 student interns and a number of college faculty and staff will join her in expressing the college's appreciation at the 7:30 to 9 a.m. Internship Breakfast Roundup in the Faculty Center dining room.

"This program is to be a celebration of the past success of the internship programs, and a dedication to the future efforts of the program," says Hunt.

The college's internship program has grown rapidly from a single accounting internship last year to a multi-discipline program for marketing, computer information systems, judicial system and community mental health internships, reports Hunt.

These internships, which provide hands-on experience under professional supervision for students in a particular career field, are developed and offered through the student employment office in conjunction with the college's various academic departments, explains Hunt, adding that they provide not only college credit but income for the students at rates beginning at \$5 an hour.

Hunt would like to see more students become aware of the internship possibilities and urges those interested to contact her office.



MERYL ACKERMAN of Providence (left) with daughter Lauren on her lap is one of a number of parents who stopped by Alice Pellegrino's (right) Kindergarten class at the Henry Barnard School recently to watch the fun as students observed 'National Music in Our Schools' month. College president Dr. Carol J. Guardo is at center.

Do you need...

FORD FIESTA 1978: Ghia model. New clutch, upholstery, exhaust, struts, water pump and more. Michelin radials. Body nearly perfect. Front-wheel drive. Cheap and peppy transportation that looks good and goes in snow. First \$650 takes it. 456-8133 or 231-6823.

SEARS FREEZER: Upright frostless. \$100. Call Ext. 8132 or 943-0939 after 5 p.m.

APARTMENT FOR RENT: Off Mt. Pleasant Ave., Farm Street. 2-bedroom luxury, fireplace living room, appliances including dishwasher, new wall-to-wall carpeting, tiled bath with separate shower stall, washer/dryer hookup, garage with opener, alarm system. \$650 per month plus security deposit. Call 277-5883 days; 521-7081 after 6 p.m.

1983 SUZUKI: For sale - 450GL. Very low mileage. Excellent condition. \$1,000. Call Linda after 5:30 p.m. at 781-2282 or 456-8237 between 8:30 and 4.

WHAT'S NEWS AT RHODE ISLAND COLLEGE

EDITOR
Robert K. Bower

ASSOCIATE EDITOR
George LaTour

STAFF
Gordon E. Rowley, Photographer
Ellen W. Hunt, Secretary
Alberta Gardiner, Typist

STUDENT STAFF
Christine Albanese, Calendar
Lisa Marie Cashman, Writer
Johanna Bennett, Writer
Lisa Castro, Paste-Up

What's News at Rhode Island College (USPS 681-650) is published weekly throughout the year except during semester breaks by Rhode Island College News and Information services, 600 Mt. Pleasant Avenue, Providence, R.I. 02908. Second Class postage paid, Providence, R.I.

Postmaster: Send address changes to, What's News at Rhode Island College, News and Information Services, c/o The Bureau, 600 Mt. Pleasant Avenue, Providence, R.I. 02908.

DEADLINE
Deadline for submission of copy and photos is TUESDAY at 4:30 p.m.

TELEPHONE
456-8132

PRODUCTION
Beacon Press

Focus on the Faculty and Staff

Dr. Francis J. Leazes Jr., assistant professor of political science and coordinator of Rhode Island College's Public Administration Program, recently was named program chair for the American Society of Public Administration's Region I/II conference to be held in Newport November 1988. The conference theme will focus on the changes that the public administration community throughout New England and New York have experienced during the Reagan Presidency.

Dr. Richard R. Olmsted, professor of philosophy, spoke at the eastern regional meeting of the Society of Christian Philosophers April 10. His presentation was entitled "Sanyata and the Divine Dark."

Ellen Weaver Paquette, coordinator of cooperative education, was installed as a member of the editorial board of the *Journal of Cooperative Education* at the annual CEA, Inc., national conference April 1-3 in Los Angeles. Additionally, she will serve on the National Cooperative Education Curriculum Committee and CEA's publications' committee.

Adding 'class' to summer

More than 300 graduate and undergraduate courses in two six-week sessions will be offered this summer at Rhode Island College.

The first session is set for May 18-June 26; the second, June 29-August 8. Registration is now underway for the day and evening courses.

For a copy of the summer brochure, call 456-8091.

At Rhode Island College you'll find what you need to make your summer first class!

Food for Thought series continues

The final informal talk in the English department's lunchtime series, "Food for Thought," will be given by Dr. Taki Vitoras on Wednesday, April 15, at 12:30 p.m. in the Shakespeare Room in Craig-Lee Hall, Room 265.

Professor Vitoras, who is an associate professor of English, will be discussing "Eroto-kritos: Love Trials Cretan Style."

He has returned this semester from sabbatical leave in Greece where he worked on translating *Eroto-kritos* from Greek into English. His insights into the problems of the translator should be provocative.

Bureau of Grants and Sponsored Projects: Request for proposals

(The Bureau of Grants and Sponsored Projects will be providing information about requests for proposals (RFPs) on a regular basis in this column. Anyone interested in obtaining further information or applications and guidelines need only circle the number of the RFP on the coupon below and send it to the Bureau in Roberts 312.)

1. Office of Assistant Secretary for Health: Adolescent Family Life Research Program. Supports research on: influences on, and consequences of, adolescent premarital sexual behavior; influences on, and consequences of adolescent premarital pregnancy; the adoption option for the unmarried adolescent mother; and the evaluation of pregnancy services. DEADLINE: June 1.

2. Canadian Studies: Grant programs from Canadian Embassy are designed to promote research in social sciences, humanities, law and fine arts with a view to contributing to development of Canadian Studies in the U.S. Included are Faculty Enrichment Program, Senior Fellowship Award, Graduate Student Fellowship Program, Faculty Research Program, Institutional Research Program, Program Development Grant, Outreach Grant Program, Conference Grant Program, and Matching Grant Program. Some DEADLINES are June 15, others are late September or October.

3. Gas Research Institute: Basic research contract opportunities for grant proposals designed to benefit the regulated natural gas industry and gas consumers. Contracts may run as long as three years. Research areas include deep drilling, high temperature solid oxide fuel cells, reservoir diagnostics, thermophysical properties of natural gases and related fluids, mechanisms for improving heat transfer rates in gas-fired applications and mechanisms, and regulation involved in microbiological degradation of lignocellulosic materials. DEADLINES: Either June or September.

4. National Institute of General Medical Sciences: General Medical Sciences Research. Funds research in basic or general biomedical sciences that have significance for two or more NIH institutes or are outside the general responsibility of any other institute. Five major program areas: the cellular and molecular basis of disease; genetics; pharmacological sciences; and biophysics and physiological sciences (including research on trauma and burns, and on anesthesiology). DEADLINE: June 1.

5. National Institutes of Health: Academic Research Enhancement Awards. Competitive awards support individual faculty research projects in order to strengthen the research environment of institutions that provide baccalaureate training for research scientists, but that have not historically been major participants in NIH programs. DEADLINE: June 1.

6. National Institutes of Health: NIH Small Grant Awards. One-year, non-renewable awards provide support for pilot projects, to test new techniques, or for feasibility studies of innovative and high-risk research which would provide a basis for more extended research. DEADLINE: June 1.

7. National Endowment for the Humanities: Texts: Translations. Supports the translation into English of works that provide insight into the history, literature, philosophy, and artistic achievements of other cultures and that make available the thought and learning of their civilizations. Grants range from \$3,500 to \$75,000 and will normally not exceed 80 percent of total costs of a project. DEADLINE: June 1.

8. National Center for Nursing Research: Nursing Research Program. Supports nursing research related to patient care, promotion of health, prevention of disease, and the mitigation of the effects of acute and chronic illnesses and disabilities. NCNR programs supporting studies of nursing interventions, nursing procedures, and delivery methods and ethics of patient care are expected to complement other biomedical research programs primarily concerned with the causes and therapy of disease. DEADLINE: June 1.

Bureau of Grants/Sponsored Projects

Please send me information on the following programs: (Circle programs of interest to you.)

1. 2. 3. 4.
5. 6. 7. 8.

Name:

Campus Address:

4/13/87

AIDS Resources

for information, support and health care.

At Rhode Island College:

Dr. Thomas Pustell 456-8094
Counseling Center

Dr. James Scanlan 456-8055
Health Services

Mary Olenn, R.N. 456-8061
Office of Health Promotion

In the community:

AIDS Hotline 1-800-221-7044

R.I. Gay Helpline 751-3322

Project AIDS/RI 277-6502

R.I. Department of Health 277-2362

Fenway Health Clinic 1-617-267-7573

Fulbright teacher exchange applications available in summer

Applications for the Fulbright Teacher Exchange Program for 1988-89 will be available this summer. Deadline for receipt of completed forms is Oct. 15, according to the United States Information Agency.

The teacher exchange program involves a one-on-one exchange for teachers at the elementary, secondary and postsecondary levels with suitable teachers overseas.

The 1988-89 overseas exchange program will involve Argentina, Australia, Belgium/Luxembourg, Brazil, Canada, Colombia, Denmark, the Federal Republic of Germany, France, Iceland, the Netherlands, Norway, Panama, South Africa, Switzerland and the United Kingdom.

The number of exchanges available and the eligibility requirements vary by country.

The program also provides opportunities for teachers to participate in summer seminars from three to eight weeks. During the summer of 1988, seminars will be held in Italy and the Netherlands.

The Rhode Island College Bureau of Grants and Sponsored Projects will present more details of the program in its *What's News* column when applications are received, reports Dr. R.N. Keogh, director.

**What's News
DEADLINE
Tuesday
4:30 p.m.**



Keeping Score

with Dave Kemmy

Softball squad unbeaten

The Anchorwomen softball team is off to another fine start, posting a 4-0 record after a rain-shortened first two weeks of action.

The squad swept a doubleheader from Division II Stonehill on Thursday, April 2, in North Easton, Massachusetts.

Senior Cristina Alnas continued her brilliance on the pitching mound with a three-hit shutout in the opener, leading her troops to a 1-0 victory. Centerfielder Kim Higgins knocked in the only run of the game with a single in the fourth inning.

In the second game sophomore hurler Mary Ilg pitched a fine game, recording her first career shutout in a 7-0 Anchorwomen

The netmen tangle with Salem State on Friday, April 10, at Salem and their next home meet isn't until the end of the month.

Baseball Rained Out

The unbelievable weather accounted for five washed out baseball games and the Anchorwomen haven't played since their 9-4 victory over Framingham State March 26.

Even with the inactivity the squad maintained their number six ranking in this week's New England Division III Coaches Poll. Shortstop Len Silva also held on to his spot as the top hitter in New England Divi-



DOREEN GRASSO



CARA NIEDERBERGER

win. Ilg allowed just three hits and only four walks in picking up her first win of the year.

Shortstop Doreen Grasso and Cara Niederberger both had strong offensive games, with each getting two hits and an RBI. Christine Blessing added a single and an RBI and Kathy Pinto, Kim Higgins, Janet McElroy, Penny Fish and Ilg all had one hit apiece.

Alnas has some impressive stats in her first three appearances on the mound. She has struck out 24 batters, given up just seven hits and allowed just seven walks in 21 innings of work. She has yet to give up a run as well.

National Player of the Week Honors

Last week she was under consideration by ABC Sports for "ABC's Wide World of Sports National Player of the Week Honors." That is one distinction no other Rhode Island College athlete has ever been considered for, and it is quite an accomplishment for Alnas to even be considered for an Award of that magnitude.

The Anchorwomen were rained out of a doubleheader with defending Division III National Champion Eastern Connecticut on April 4, but they will make up the games on Sunday, April 12 beginning at 1 p.m. on the softball field behind Adams Library.

Men's Tennis Season Opens

The men's tennis team opened their season last week with two losses, bowing to Bryant 5-4 and to Southeastern Massachusetts 7-2.

Against Bryant, freshman Marc Dubois proved he is indeed the squad's top player with a 6-4, 6-1 singles win in the number one position. Number two player Marc Remillard and number three player Joe Lamoreaux also won in singles. In doubles play the team of Dubois and Remillard clicked to perfection with a 6-1, 6-1 win.

Against SMU Dubois took another singles victory 2-6, 6-3, 6-3 and Lamoreaux also won for the second time with a 6-0, 6-1 decision. That was all the victories the Anchorwomen could muster in the match as they lost all three of their doubles matches.

sion III play with a sterling .727 average. Senior pitcher John "Spud" Silva is currently fifth in New England Division III Pitching with a 2-0 record and 1.92 ERA.

The Anchorwomen hope to makeup as many of the washed out games as possible, but due to the scheduling problems created by all the rain, some of the games may not be made up and this may hurt the team when it comes time for post-season selections.

Their next home game is Thursday, April 16, when they host Division II Bryant in the first round of the Rhode Island State Baseball Tournament. After that they host a tough Amherst College team on April 18.

Track and Field Results

Freshman Maria Teeman continued her fine performance this season by taking first place in the discus at the Fitchburg State Invitational April 4.

Her throw of 126'4" broke the school record in the discus that she had set just two weeks earlier at the Rhode Island College relays. She has displayed some fine form thus far this year and is not too far away from reaching the qualifying standards for the NCAA Division III National Championships.

The men's track and field team had several performers place in their recent meet at Fitchburg State on April 4.

Junior Mike Leddy had a great day, finishing first in the triple jump with a leap of 42'2" and eighth in the long jump with a 17' 10 1/4" jump. Cross country star Jim Bowden ran a fine 5,000 meter race, finishing second in 15:11. Joe Roch placed in two events, taking sixth in the triple jump and seventh in the long jump.

Senior Lenny Harmon didn't place in the 800 meters, but he did win his heat with a time of 2:03.5. The 1500 meter relay team, consisting of Lenny Harmon, Jesus Berrio, Mark Cousineau and Joe Contreras placed eighth.

The squad will travel to Bryant for a quad meet April 8 with Coast Guard and Nichols and then they will compete in the Southeastern Massachusetts Invitational on April 11.

Completion of first phase of statewide students' writing assessment nears completion

by George LaTour

Rhode Island Consortium on Writing, which had been asked by the state Department of Education to participate in the statewide testing of students' writing, reports nearing the completion of the first phase, assessment of the writing of the state's third graders.

Work was begun last fall on the first phase when the Center for Evaluation and Research at Rhode Island College (CERRIC) asked the consortium -- founded by a Rhode Island College faculty member -- to submit a plan for involving local teachers in writing assessment.

A writing assessment committee was appointed which developed test questions, a timetable and scoring criteria.

The first writing test was given all third graders in the state the last two weeks of March, reports Dr. Mary McGann, consortium director.

Results were evaluated by a 46-member scoring team meeting at the University of Rhode Island April 1 and 2. They evaluated some 9,000 student essays.

In the next few years plans by the education department call for the assessment of the writing of students in the sixth and tenth grades, says McGann, who is also director of the Rhode Island College Writing Center and member of the college's English department faculty.

Results of all the testing will be used to develop writing curricula and to train teachers in the teaching of writing.

McGann terms as "historic" the collaboration among teachers, the state Department of Education, and the Educational Testing Service at Princeton which has made the project possible.

While noting that "half the states in the country" have direct writing assessment



MARY MCGANN

programs, "only a few have committed resources to teacher involvement in the planning and scoring of such assessment."

Rhode Island has yet to commit itself financially to the project, says McGann.

Writing assessment committee members include McGann and Margaret M. Day of the Cranston public schools, co-chairs; Elizabeth Durfee, Burrillville; Nancy Folgo, West Warwick; Marie Hanley, Lincoln; Lou Barboza, Providence, and Mercedes Coulombe, Newport.

Also, Jeffrey Miner, Warwick; Timothy O'Connor, Woonsocket; Robert Schwegler, University of Rhode Island; Judy Wood, South Kingstown, and Marianne Heimbecker, North Providence.

Folgo, Heimbecker, Hanley and Day are all Rhode Island College alumnae.

Wins scholarship to study in England

Will focus on Chaucer

Laurel A. Gelinias of Providence and formerly of Woonsocket, a junior English major, has won the Elisha Mowry Scholarship for Study in Great Britain and Ireland.

She is the second Rhode Island College student to have won this award in recent years.

Students from five Rhode Island universities and colleges had competed for the honor, according to Dr. Carolyn Fluehr-Lobban, coordinator of the Office of International Education which sponsored the competition at Rhode Island College.

The scholarship, offered by the English Speaking Union, Providence Branch, will take Gelinias to the University of Lancaster in northwest England where she will be studying with colleagues of Dr. Meredith McMunn of the English department here.

Gelinias attributes much of her interest in the medieval writings of poet Geoffrey Chaucer, on which she will focus her attention, to Professor McMunn.

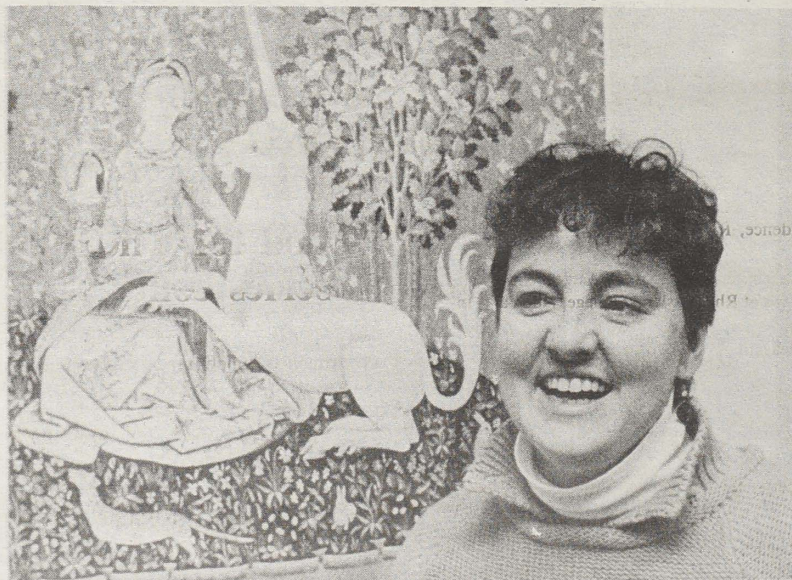
From her studies, she says, she plans to develop a contemporary play on Chaucer and "make him more accessible to today's audiences."

Gelinias, a former administrative assistant in the college's gerontology program and student of the theater, had in 1985 established a "creative reminiscing group" with members of the North Providence Senior Citizens Center by which legitimate theater was brought by the seniors to others throughout the state. The group continues on today as the "Second Wind Theater."

She and the seniors were the subject of a *What's News* front page feature by George LaTour at the time. Her story was subsequently picked up by the media and given wide publicity.

Gelinias has already begun work on the historical play, which represents the third she will have written, Gelinias reports.

Her overseas study will be undertaken from January through March of 1988.



LAUREL GELINAS with unicorn tapestry from the 14th Century. She has won award to study in England where she will concentrate on the 14th Century poet Geoffrey Chaucer. (What's News Photo by Gordon E. Rowley)



THE BRITISH WERE HERE: Oxford Debating Union from Oxford University debates the topic 'The Generation that Raised Us Has Failed Us' in the Student Union Ballroom April 1. Note the kilts on debater at left. Apparently, the Americans -- in this case the Rhode Island College Debate Council -- again defeated the British. (What's News Photo by George LaTour)

Performing Arts Series:

Philip Glass ensemble performs here on April 28

Musical America's Musician of the Year for 1985, Philip Glass, will bring his Philip Glass Ensemble to stage at Rhode Island College's Roberts Hall auditorium on Tuesday, April 28.

The 8 p.m. performance marks the last entry in this season's college Performing Arts Series.

Glass, an American composer, has written for opera, film, theater, dance, and his own group.

"Few composers in this century have achieved the sweeping popularity or influenced the musical sound of their times as much as Philip Glass," notes *Musical America's* Robert T. Jones.

Glass' music has been termed "heady, euphoric, original" with a "driving beat, sense of drama, aura of mysticism" the sheer magnitude of which has "permeated not only the world of 'serious' music but rock and pop as well."

In opera, Glass' specialty, he has revitalized an art form long given up for dead, says Jones.

"Glass' recordings sell in numbers well beyond those expected of a classical artist, and he is almost certainly the only living



PHILIP GLASS

composer whose concerts are invariably sold out," says Jones.

Box office opens April 20. Ticket prices are: \$12 for general public; \$8 for faculty and staff, non-Rhode Island College students and senior citizens, and \$3 for Rhode Island College students. All seating is reserved.

For more information, call 456-8144 (box office) or 456-8194.

★ FIPSE

(continued from page 1)

1984 where he maintained a large financial analysis package for the IBM PC/XT (PASCAL).

Previously, he had been a senior applications programmer with Harvard University.

He was assistant professor in the computer science department at Wentworth Institute, Boston, and instructor of sociology at Upsala College in East Orange, N.J.

He has a number of publications to his credit, particularly analytical reports to various federal government agencies in this country and abroad.

Cavanagh holds a bachelor's degree in mathematics and physics from Brandeis University, and a master's in sociology from Brown. He did graduate work in survey research at the University of Michigan in addition to his doctoral studies.

★ ALUMNI

(continued from page 1)

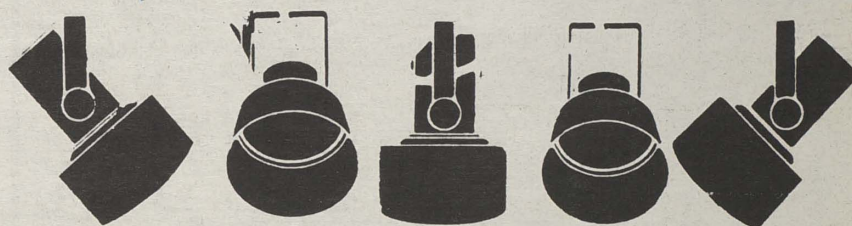
She is active with the Lupus Foundation of Rhode Island, the International Jumping Derby, and is an associate with the Museum of Art at the Rhode Island School of Design.

An active and dedicated volunteer, Andreoli is being honored for her outstanding tenure as the association's president from 1983 to 1986. During her two terms, she worked to raise the visibility and quality of the alumni association's contributions to the

college, setting the tone for the "mark of excellence."

"Under her leadership, the alumni association board completed a major renovation of the college's Alumni Lounge, greatly increased its scholarship support, and presented a first-rate alumni display in honor of President Carol J. Guardo's inauguration," said Shadoian, pointing out that Andreoli was responsible for the securing via donation of the display units themselves.

Andreoli will head up the college's Annual Fund for 1987.



RHODE ISLAND COLLEGE Rhode Island's Center for THE PERFORMING ARTS

Calendar of Events

April 13 - April 20

Monday, April 13

Noon — Debate on AIDS and Government Action. Student Union ballroom.

Noon to 1 p.m. — Alcoholics Anonymous meeting. Student Union 305.

2 to 4 p.m. — Disability Support Group to meet. Craig-Lee 127. Everyone welcome. For more information call 456-8061.

Monday-Wednesday, April 13-15

Noon — Mass. Student Union 304.

Monday-Friday, April 13-17

Jim Coates/Sculpture and Drawings to be on display at Bannister Gallery, Art Center. Gallery hours: Monday-Friday, 11 a.m. to 4 p.m.; Tuesday and Thursday evenings 6 to 9 p.m.

Tuesday, April 14

11:30 a.m. to 1 p.m. — Health Watch Table. Free blood pressure screening and information on AIDS and personal health available. Donovan Dining Center.

Noon — Donahue Style Panel Discussion on AIDS. Student Union ballroom.

Noon — Weight Loss Guidance Program meeting. Registered dietician Kit Gallagher will advise participants. Faculty Center Reading Room. Open to the Rhode Island College campus community. Free. For more information call the Office of Health Promotion at 456-8061.

2 to 4 p.m. — Symposium to honor Dr. Marion Wright on her retirement from Rhode Island College. The symposium, entitled "Time, Space, and Culture: A Symposium on Modern Geography" will focus on the renewed interest in teaching and research

in geography. Fogarty Life Science 050. A reception in the Faculty Center will follow.

3:30 p.m. — Men's Baseball. Rhode Island College vs. Worcester State. Away.

3:30 p.m. — Men's Tennis. Rhode Island College vs. Salve Regina. Away.

Wednesday, April 15

10 a.m. to 2 p.m. — Wellness Wagon. Free health evaluations and advice on health maintenance to be offered. Donovan Dining Center. Open to all.

Noon — Lenten program titled "Butterflies and Cocoon: New Life Spirituality," to be offered by the Chaplains' Office. Student Union 305. Brown bag lunches may be brought to the workshop. Open to the Rhode Island College campus community. For further information call 456-8168.

Noon to 1 p.m. — Channel 6 newscaster David Layman to speak on "Propaganda, Censorship and Information and the Role of the American Media." The talk is part of the history department's series of lunchtime colloquia which focus on U.S.-Soviet information and the arms race. Gaige 207.

12:30 p.m. — AIESEC weekly meeting. AIESEC is the International Association of Students in Economics and Business Management. Alger 216A.

12:30 p.m. — American Marketing Association meeting. Craig-Lee 151.

12:30 p.m. — Dr. Taki Vitoras to speak on "Erotokritos: Love Trials Cretan Style" as part of the English department's Food for Thought series. Craig-Lee 265.

12:30 p.m. — Interviewing Skills Workshop to be offered by the Office of Career Services, Craig-Lee 054.

12:30 to 1:30 p.m. — Al-anon and Adult Children of Alcoholics to meet. Craig-Lee 127.

12:30 to 2 p.m. — Psychology Department Colloquium. Dr. Brinton Lykes of the college's psychology department to present a lecture entitled "Perspectives on Self and Culture in the Life Stories of Indian Women of Guatemala: Preliminary Analyses of Work in Progress." Horace Mann 189.

1 to 2 p.m. — Anchor Christian Fellowship. Weekly meeting. Student Union 304.

4 p.m. — Women with Disabilities to be the topic of a lecture by Dr. Michelle Fine, associate professor of psychology and education at the University of Pennsylvania, and Adrienne Asch, doctoral candidate at Columbia University. Student Union ballroom. The talk is part of the lecture series titled "Under-represented Women."

6:30 p.m. — Alumni Night Dinner to be offered by the Industrial Technology Club. Faculty Center. Tickets are \$5 per person and may be purchased at the Industrial Technology Club Office, Craig-Lee 022A. For further information call 456-8808.

Thursday, April 16

10 to 11 a.m. — Resume Writing Workshop to be offered by the Office of Career Services, Craig-Lee 054.

2 p.m. — Men's Tennis. Rhode Island College vs. Suffolk University. Away.

3 p.m. — Men's Track and Field. Rhode Island College at the Boston College Relays at Boston College.

3 p.m. — Women's Softball. Rhode Island College vs. Bridgewater State (DH). Away.

4 p.m. — Women's Track and Field. Rhode Island College at the Boston College Relays at Boston College.

6:30 p.m. — Holy Thursday Mass. Student Union 304.

Friday, April 17

Noon — Good Friday Service. Student Union 304.

Saturday, April 18

11 a.m. — Men's and Women's Track and Field. Rhode Island College at the Westfield Invitational at Westfield State College.

1 p.m. — Men's Baseball. Rhode Island College vs. Amherst College. Home.

1 p.m. — Rhode Island College Rugby Club vs. Connecticut College Rugby Club. Home.

1 p.m. — Women's Softball. Rhode Island College vs. Western Connecticut (DH). Away.

7:30 p.m. — Easter Vigil. Student Union ballroom.

Monday, April 20

Noon — Mass. Student Union 304.

Noon to 1 p.m. — Alcoholics Anonymous meeting. Student Union 305.

2 to 4 p.m. — Disability Support Group to meet. Craig-Lee 127.

3:30 p.m. — Men's Baseball. Rhode Island College vs. Bryant College. Home.