



# WHAT'S NEWS

## AT RHODE ISLAND COLLEGE

Vol. 8, No. 1 Sept. 7, 1987

Mr. Olsen

### Special assistant to president for development named

*In charge of fund raising; will oversee  
alumni affairs, be liaison to Foundation*

A director of development at The Ohio State University has been named to the newly created position of special assistant to the president for development at Rhode Island College.



RICHARD PAYNE

Richard E. Payne of Delaware, Ohio, the director of development in the College of the Arts at Ohio State since 1982, was appointed by President Carol J. Guardo. He assumed his new position in late August.

Payne's primary duties include those of planning, coordinating and administering a comprehensive fund-raising program, the goal of which is to raise financial support for the college from private, alumni and corporate sources, said Guardo.

As the special assistant, he will also oversee the operations and activities of the Office of Alumni Affairs and serve as principal liaison to the Rhode Island College Foundation Board. The new position further expands upon the responsibilities of the position of the director of development which had been held by James E. Gilcreast, Jr., who resigned in February to assume the position of vice president for development at Kennedy Memorial Hospital in Brighton, Mass.

Prior to his development position, Payne served as assistant to the vice president for public affairs at Ohio State from 1977 to 1982. Previously, he had been an associate director of admissions and an assistant director of the Upward Bound program, both at Ohio Wesleyan University.

Payne received a bachelor's degree from Ohio State and a master of education degree from Xavier University in Cincinnati.

### Guardo outlines 'exciting agenda' for 1987-88

#### *College to focus on retention issue*

President Carol J. Guardo laid out a "full, challenging, and exciting agenda" for Rhode Island College in 1987-88 in her fall semester opening convocation remarks.

The traditional opening address, held Monday morning, August 31, was well attended by administrative staff. Many of the faculty were meeting at the same hour to vote on the latest offer in contract negotiations, but the president said she would arrange to deliver an address to the faculty at a later date.

In her remarks, the president said that as we begin the year, prospects for the College look exceedingly good. She noted that enrollments are up for both new and returning students, our residence halls are filled, and many major projects are underway.

She said the important theme for the College now is progress. We have made much progress during the past year, and "we should feel good about that."

"Now we need to sustain that attitude of positive accomplishment, and we need to keep the momentum going."

The president compared the College's situation to the process of building a bridge. The footings are in place. And now we need to take care that the bridge's foundation is secure and without voids in order to construct a strong bridge across the demographic chasm from now until 1992 (when the declining pool of prospective college students is expected to reverse itself).

As we build toward the future, she said, we need to continue to keep our major goal in mind: "to enhance the quality of the College in all its aspects in order to ensure the best possible and highest quality education for our students."

The president identified the issue of retention as a major part of our College agenda for 1987-88. While our retention statistics



CAROL J. GUARDO

are about average when compared with other institutions, she said we need to do much better.

President Guardo announced that an ongoing steering group has been appointed to deal with the retention issue and to oversee continuation of the efforts begun last year (such as the upgrading of the registration process and improvement of College publications).

The effort will be led by Lenore DeLucia, director of institutional research and planning, Anne Hubbard, assistant vice president for academic affairs and Gary Penfield,

(continued on page 7)

### INSIDE

Young Career Woman.....3	A Look at Books.....6
Student Retention.....4	Alumni Cabaret.....7
College Begins Anew.....5	The Arts Season.....8

### 60 new faculty, staff members join R.I. College community

Some 23 new faculty and 37 staff members have joined the Rhode Island College campus community for the start of the 1987-88 academic year, it was announced by the Office of Personnel Services.

A listing of these faculty and staff, their appointments, educational background, etc. follows:

#### Faculty Appointments

JOAN ARCHES of Waltham, Mass., assistant professor in the School of Social Work; undergraduate and graduate degrees from Boston University and currently a doctoral candidate there; formerly taught at Lasell Junior College in Newton and Regis College, Weston, Mass.

DR. STEVEN BACHOFER from Dublin, Calif., assistant professor of chemistry; Ph.D. from Brown University; formerly a research scientist for the Clorox Company.

DR. AZRA S. BHATIA from Bloomington, Ind., assistant professor of communications and theater; Ph.D. from Indiana University where she taught as an associate instructor.

DR. DOROTHY M. BIANCO of Carolina, R.I., assistant professor of psychology; Ph.D. from University of Rhode Island; formerly clinical director of Marathon House.

DR. DANIEL BIVONA of Pawtucket, as-

sistant professor of English; Ph.D. from Brown University; formerly taught at Northeastern, Brown, and Lesley College.

DR. THOMAS COBB of Coventry, assistant professor of English; Ph.D. from University of Houston; formerly taught at Houston and University of Arizona and Eastern Arizona College.

DR. CAROLYN DAGROSA of Barrington, assistant professor of nursing; Ph.D. from the University of Connecticut's School of Education and nursing degrees from Salve Regina and Boston University; formerly associate vice president of Patient Care Services at Women & Infants Hospital.

BLANCHE DESJEAN of Saunderson, instructor at the Henry Barnard School; master's degree from Rhode Island College and certified in the Montessori Method from St. Nicholas, London; formerly taught preschool and elementary levels in Massachusetts and Rhode Island.

DR. I. ATILLA DICLE of Bristol, associate professor of economics and management; Ph.D. from the University of Southern California; formerly taught both undergraduate and graduate courses in management.

(continued on page 6)



RETURNING TO COLLEGE with a little help from his friend is Gary Tata (right) of Southbridge, Mass. Friend Chris Billis helps lug a rug and TV, both 'essentials' for gracious dorm living. Classes began here last week. (What's News Photo by Gordon E. Rowley)



Focus on the Faculty and Staff

Dr. Vernon J. Williams, assistant professor of history, has been appointed a research associate at the William Monroe Trotter Institute. "I am happy to see this recognition of your scholarly potential and look forward to seeing the written work which will be published subsequently by the institute," wrote Dr. David L. Greene, dean of the Faculty and Arts and Sciences, upon learning of Williams' appointment.

Dr. Meradith T. McMunn, associate professor of English, was one of 210 scholars to receive a National Endowment for the Humanities stipend of \$3,500 each this summer to conduct research in history, literature, philosophy and other humanities disciplines. This year's awards were selected from 1,421 applicants in a nationwide competition, says NEH. McMunn's project was entitled "Visual and Verbal Narration in the Romances of Chretien de Troyes."

Rose C. Merenda, assistant professor at Henry Barnard School, was an invited workshop leader on June 30 and July 2 in a course entitled "Identifying and Dealing with the Learning Needs of Early Learners." The workshop, attended by primary teachers and principals, was conducted at St. Patrick's College in Dublin, Ireland. St. Patrick's is the principal teacher-training institution in Ireland.

George LaTour, public information officer and associate editor of *What's News at Rhode Island College*, has been elected vice president of the State Public Information Network (SPIN). Having joined the staff in 1980 in conjunction with the establishment of *What's News* as a weekly publication in tabloid format, he was formerly a reporter for the *Providence Journal-Bulletin* among other dailies and executive director and editor of a national association's quarterly magazine.

Dr. Ann E. Moskol, associate professor of mathematics, has written chapters about two noted women in a bio-bibliographic source book on *Women of Mathematics* which was published in July by the Greenwood Press in Westport, Conn. Also, Moskol has received a grant from the Bicentennial Swedish-American Exchange Fund. The grant will allow Moskol to do a compar-

ative study for the implementation of programs designed to encourage females to enter technical careers in Sweden and the United States.

Dr. Ellsworth A. Starring, associate professor of elementary education, was invited by NASA in July to meet and speak with teachers in the Teacher-in-Space program at the National Space Laboratories outside of Biloxi, Miss.

The Saturn rockets were put together and tested there previously. Major testing of the shuttle engines is now being conducted at the site, reports Starring. Last year he had been invited to talk with teachers in the program from throughout the country at meetings in Washington and the Goddard Space Flight Center in Maryland.

Starring, a resource person for the Smithsonian National Air and Space Museum, also attended a three-day conference in August along with 40 other educators in conjunction with the museum's continuing effort to expand its nationwide training program to enable the educators to present scientific and technical material to a variety of audiences. There they received a behind-the-scenes look at the National Aeronautics and Space Administration's Goddard Space Flight Center in Greenbelt, Md.

In July, Starring appeared on *The 13th State* talk show with host Glenn Russell on WSBE-TV, Channel 36. The show aired on July 24 and again on the 26th.

Dr. Jeffrey Blais, assistant professor of economics and executive director of the Rhode Island Council on Economic Education, was appointed a visiting research fellow at Princeton University. The fellows' program, which began August 2, is being conducted by the university in conjunction with the Joint Council on Economic Education as part of a research project on how to improve the teaching of economics.

Dr. Jocelyn J. Johnson, research associate at the Center for Evaluation and Research (CERRIC), and Kim H. Knight, a graduate student at Boston University, have had their article, "College Level Examinations Program Scores as Predictors of Grade Point Average," accepted for publication in *Educational and Psychological Measurement*. The article will appear in the fall or spring issue.

Dr. Joan I. Glazer, professor of elementary education and nationally recognized expert in the area of reading, will be working in the Scituate elementary schools during a sabbatical from the College this fall. The *Scituate Schools Quarterly* reports that she will be working in classrooms piloting the teacher-discussion guides for the reading enrichment program that was developed by Scituate teachers last year.

Glazer will also be working with second and third grade teachers, helping them to choose science and social studies trade books that will be used in conjunction with the Special Demonstration Grant Project this school year.

John F. Custer, professor of communications and theatre and director of the College's Performing Arts Series, attended the Prague Quadrennial/87 in June.

Billed as the "biggest show of scenography," this world exposition of theater design and architecture was attended by designers and architects from more than 35 countries. Custer was a part of the 50-member delegation from the United States. Besides the quadrennial, the U.S. delegates also visited London, Budapest and Salzburg. Fellow theater designers and architects from those countries were their hosts.

Dr. Robert F. Carey, director of the Center for Evaluation and Research (CERRIC), has recently published a chapter in a new book on reading theory and research. Co-authored with Jerome C. Harste of Indiana University, it is entitled "Comprehension as Context: Toward Reconsideration of a Transactional Theory of Reading." It appears in the book *Understanding Readers' Understanding* which was published by Lawrence Erlbaum Associates in July.

Dr. Sharon Rallis, research associate with CERRIC, recently presented an invited paper at the American Federation of Teachers (AFT) Quest '87 conference in Washington, D.C. Entitled "A Case for Why Teachers Should be Instructional Leaders in Schools," it was based on Rallis' article "The Myth of the Great Principal" published in December 1986 in the *Phi Delta Kappan*.

Dr. Frederic G. Reamer, associate professor in the School of Social Work, has been appointed to the Rhode Island Housing and Mortgage Finance Corporation for a term expiring July 1, 1991, by Gov. Edward D. DiPrete.

Research and Grants Administration:  
Request for proposals

The Office of Research and Grants Administration will be providing information about requests for proposals (RFPs) on a regular basis in this column. Anyone interested in obtaining further information or applications and guidelines need only circle the number of the RFP on the coupon below and send it to the office in Roberts 312.

1. **Postdoctoral Fellowships in the Humanities:** Columbia University Society of Fellows in the Humanities. One-year renewable fellowships carry a stipend of \$27,500/year and provide recipients contact with teaching scholars at the university, involvement in interdisciplinary programs of general education and innovative courses of their own design, and the time and resources for independent scholarship. Applicants must have received their Ph.D. degrees between January 1985 and July 1988. DEADLINE: OCT. 15.

2. **Specialized Language Training:** International Research and Exchanges Board. In-country language study programs provide participants with language capability sufficient for research and training. Grants for the Soviet Union are limited to the study of non-Russian languages. Grants for Eastern Europe may be used in Bulgaria, Czechoslovakia, Hungary, Poland, Romania, and Yugoslavia. Both graduate students and faculty may apply. DEADLINE: OCT. 15.

3. **Travel Grants for Senior Scholars:** International Research and Exchanges Board. A limited number of travel grants are available for humanists and social scientists who have received a formal invitation from an appropriate institution in the USSR or Eastern Europe, such as an academy of science or one of its institutes. Grants support travel costs for short-term visits for lecturing and/or consultation only; they do not support travel to conferences or individual research. DEADLINE: OCT. 15.

4. **Fellowships Program:** National Humanities Center. Approximately 35 fellowships are awarded annually to individuals in the humanities, social sciences, natural sciences and the professions for residencies at the National Humanities Center. Award covers cost of salary only. Final decisions on fellowships are announced in March. DEADLINE: OCT 15.

5. **Research Support Program (Small Grants):** Henry A. Murray Research Center. Support for postdoctoral research in the humanities and social or behavioral sciences, using the resources of the Schlesinger Library and the Murray Research Center at Radcliffe College. Research support program provides small grants in the range of \$100 to \$4,500. Awards may be used for

travel, research assistance, computer time and study related expenses. DEADLINE: OCT. 15.

6. **Institutional Grants Program:** Tinker Foundation. Awards of \$15,000-\$40,000 are made for projects related to Spain, Portugal and Latin America. Support is provided for projects in the social sciences, international relations and outreach efforts to encourage collaboration between the U.S., Latin America and Iberia. DEADLINE: OCT. 14.

7. **Fulbright Teacher Exchange and Summer Seminars Program:** United States Information Agency. Opportunities for academic administrators and faculty to participate in a one-on-one exchange with personnel overseas or in summer seminars conducted abroad. Participating countries are announced each year. 1988-89 exchanges include: Argentina, Australia, Belgium, Brazil, Canada, Columbia, Denmark, France, Germany, Iceland, the Netherlands, Norway, Panama, South Africa, Switzerland, and the United Kingdom. Summer Seminars will be held in Italy and the Netherlands. DEADLINE: OCT. 15.

8. **Group Projects Abroad:** U.S. Department of Education. Supports projects designed to help institutions improve and develop their programs in modern foreign languages and area studies through overseas group projects in research, training and curriculum development. Grants may be used for international travel; maintenance allowances; purchases of artifacts or other teaching materials; project-related travel in the overseas area; and rent for facilities and clerical support in the country of study. Deadline cited is tentative. DEADLINE: Oct. 26.

Office of Research and Grants Administration

Please send me information on the following programs: (Circle programs of interest to you.)

1.	2.	3.	4.
5.	6.	7.	8.

Name: \_\_\_\_\_

Campus Address: \_\_\_\_\_

9/7/87

Do you need...

1977 Plymouth Volaire with air, 4 new tires, clean. Call after 5 p.m. 861-5311.

**Condominium for Sale:** Mint 2 bedrooms, air conditioned, stove, refrigerator, washer and dryer in basement. Condo fee includes heat. Off Woonasquatucket Ave. near campus. Call Denise at Yorktown 943-6150 or 831-5667. \$69,900.

**Apartment for Rent:** 4 rooms. Furnished. Second floor. Near Mineral Spring and Branch Avenues in North Providence. Adults. \$475/month. Call Eve 942-0696.



EDITOR  
Robert K. Bower

ASSOCIATE EDITOR  
George LaTour

STAFF  
Gordon E. Rowley, Photographer  
Cynthia L. Sousa, Production  
Ellen W. Hunt, Secretary

STUDENT STAFF  
Christine Albanese, Calendar  
Lisa Castro, Paste-up

What's News at Rhode Island College (USPS 681-650) is published biweekly throughout the academic year except during semester breaks by Rhode Island College Office of News and Publications Services, 600 Mt. Pleasant Avenue, Providence, RI 02908. Second-Class postage paid at Providence, RI.

Postmaster: Send address changes to What's News at Rhode Island College, Office of News and Publications Services, 600 Mt. Pleasant Avenue, Providence, RI 02908.

DEADLINE  
Deadline for submission of copy and photos is 4:30 p.m. the Tuesday before publication date.

TELEPHONE  
(401) 456-8132

PRINTING  
Beacon Press

Next issue of What's News  
is Monday, Sept. 21.

DEADLINE

for copy, photos, etc. is  
4:30 p.m. Tuesday, Sept.14.

Named to national trade assn. staff

Pamela L. Milligan of Providence, a 1986 honors graduate of Rhode Island College who, in 1984, became the college's first Truman Scholar, has been appointed assistant to the press secretary of the National-American Wholesale Grocers' Association (NAWGA).

Milligan, daughter of Jack and Patricia Milligan of Johnston, will assist in the implementation of NAWGA's press relations.

She had been selected a Harry S. Truman Scholar, one of only 200 nationally to be selected that year, and Presidential Manage-

ment Intern (PMI), both nationally competitive awards in the field of public service. As Truman Scholar she was awarded up to \$5,000 a year for four years to complete her undergraduate work and two years of advanced study.

Milligan did study at the London School of Economics and was scheduled to complete her master's degree in public administration from the Maxwell School of Syracuse University in August, according to NAWGA.

NAWGA is headquartered in Falls Church, Va.



## 13 staffers receive monetary recognition for 'exceptional service to College'

Under a \$9,000 grant from the Rhode Island College Foundation last spring, 13 staff members were awarded money for their "exceptional service" to the College during 1986-87.

Nominations for these "Outstanding Performance Awards" were made by the College vice presidents. Final selection of recipients was determined in consultation with the President's Council, said President Carol J. Guardo in a letter to individual recipients.

The criteria for selection, noted Guardo, included "a high degree of productivity, exceptional quality work, initiative in the performance of responsibilities, dependability, effective interpersonal relations, and commitment to and advancement of the stated agenda for Rhode Island College."

Receiving the awards were: Robert

Bower, director of communications; Douglas Cureton, assistant director of the Campus Center for training and services; Judith Gaines, director of the Counseling Center, and Peter Harman, director of the Computer Center.

Also, William Hurry, director of financial aid and student employment; Donna Konicki, manager of systems development, Computer Center; Lorraine L'Heureux, assistant director of Office Services, and Patricia Marzzacco, coordinator of recruitment, Admissions Office.

Also, Amelia Revkin, assistant director, freshman admissions; Kathryn Sasso, director of conferences and special events; Holly Shadoian, director of alumni affairs; Charlene Szczepanek, bursar, and Cherie Withrow, director of residential life and housing.

## Grellner to lecture in Poland under Fulbright exchange

Dr. Alice Grellner, professor of English and education at Rhode Island College, has been awarded a Fulbright grant to lecture in Poland, the Board of Foreign Scholarships and the United States Information Agency (USIA) announced recently.

Grellner, who moved to Providence when she joined the college faculty in 1970, will be teaching language theory and methods of teaching at Jagellonia University in Krakow. She leaves Sept. 8 for a 10-month period.

Professor Grellner has been teaching teachers as director of the Masters of Education/English as a Second Language Program here for the past nine years. She is a native of Okarche, Okla.

She is one of about 2,500 U.S. grant winners being sent abroad for the 1987-88 academic year under the Fulbright exchange program which was established in 1946 "to increase mutual understanding between the people of the United States and the people of other countries."

Grant recipients are selected on the basis of academic and professional qualifications



**ALICE GRELLNER**

plus their ability and willingness to share ideas and experiences with people of diverse cultures, according to program information.

### Attention undergraduate teacher ed students

All undergraduate students planning to apply for entrance into a teacher education curriculum in the Fall 1987 semester must have fulfilled the Pre-Professional Skills Tests requirement before they can be accepted in the program, it was announced by William H. Lawton, chair of the Professional Admissions Committee.

The tests will be administered next on Saturday, Oct. 10.

Registration must be made by Thursday, Sept. 10, with the Center for Evaluation and Research (CERRIC), Room 406, Adams Library.

The fee is \$35. Questions should be referred to the Office of Laboratory Experiences, Horace Mann Hall 105.

## Chosen 'Young Career Woman'

A 1982 alumna of Rhode Island College has been named Rhode Island Young Career Woman for 1987 by the Rhode Island Federation of Business and Professional Women.

Michelle R. (Beauchamp) Belhumeur of Woonsocket, a *cum laude* graduate with a bachelor of social work degree, represented the North Providence chapter of the federation and was one of 13 young women in a statewide competition held recently in Newport.

The federation's Young Careerist Program recognizes the accomplishments of outstanding young women who have made significant contributions in their chosen field and in community service, according to Eloise A. Foley, federation spokeswoman.

Belhumeur is a medical social worker at Milford-Whitinsville Regional Hospital in Milford, Mass., and also serves as director of social service, admissions and public relations at Sheldonville Nursing Home in Massachusetts. She was formerly social service director at Overlook Nursing Home in Pascoag.

The daughter of Mr. and Mrs. Rene W. Beauchamp Jr. of Lincoln, she attended Lincoln Senior High School and Salve Regina College before enrolling here. She is married to Marc R. Belhumeur.

She is a board member of the Rhode Island Health Care Social Workers' Association



**MICHELLE BELHUMEUR**

and has served as chair of a conference for health care professions.

Began in 1963 by the national federation, the local careerist program is conducted annually and is one of a number of programs sponsored by the Rhode Island federation in support of working women.

## Bower named director of communications here

*Will oversee internal, external communications*

Robert K. Bower of the Hope section of Scituate and formerly of Manhattan, Kan., has been named director of communications at Rhode Island College, a new title reflecting his position as administrator of both the functions of publications and news and information services.

The appointment, made by President Carol J. Guardo, took effect June 21, according to John S. Foley, vice president of College Advancement and Support. Foley had recommended the appointment as part of a reorganization of his division.

As director of communications, Bower is responsible for the college's internal and external communications program. As such, he will plan, execute and coordinate the news, information, publications and advertising programs and develop and administer the College's editorial policy.

Bower, who joined the College staff as director of the office of publications in November 1985, served as acting director of the office of news and information services during the consolidation of the two departments.

Prior to coming to the College, Bower had served as publications editor at Kansas State University from 1981. Previously, he was assistant publications editor at Iowa State University, and held parttime positions such as proofreader for the Iowa City *Press-Citizen* while attending graduate school.

He received a bachelor's degree in English at Simpson College, Indianola, Iowa, in



**ROB BOWER**

1970; a master's in English at the University of Wyoming, Laramie; completed additional study towards a Ph.D. in English and an M.A. in journalism, both at the University of Iowa.

He and his wife, the former Martha Ann Stewart, have two children, Matthew, age 3, and Seth, 10 months.

## Events slated to promote racial understanding

A series of social events emphasizing the diversity of the make-up of the Rhode Island College campus community is set to begin Thursday, Sept. 17, with an "All Together Now" cookout featuring multicultural foods and entertainment from noon until 7 p.m. in and around the Campus Center.

Music, remarks and a performance by the East Asian Dance Troupe start the day's events. Special games will be held from 1 to 4 p.m. followed by cultural cuisine and a "variety of cultural entertainment."

While this event is aimed primarily at students, an Oct. 21 event—as yet in the planning stage—will be geared more toward bringing together faculty and staff, according to Dr. Gary M. Penfield, vice president for student affairs and dean of students.

In November, the College will host a SOAR conference (Society Organized Against Racism) which will be coordinated by Jay Grier, assistant director of the Office of Student Life for minority affairs. SOAR is a New England organization which Rhode Island College has recently joined.

These events, along with others recommended by an ad hoc committee on racial understanding, come in response to two incidents at the College last spring which are being viewed as "racial," said Penfield.

These incidents involved student athletes who became involved in scuffles outside the residence halls and the Student Union. Penfield said that other students were on hand to witness the actions and some of them were very concerned about the incidents.

As reported through the news media, there were numerous incidents sparked by declining racial sensitivity which occurred on college campuses across the country last year and Penfield noted that "Rhode Island College is not immune to these national trends."

"The situation (of racial tension) exists here and all over the country," said Penfield, adding, "the first step in constructive-

ly addressing these concerns on our campus is to acknowledge that racial tension exists and then to establish a process by which the entire College community can address these concerns. That was the purpose in establishing the ad hoc committee."

Upon receipt of the ad hoc committee's report, the vice president appointed seven people to work with him in the pursuit of "developmental, sensitivity and awareness programs" for the College.

Those appointed are Jay Grier; Dixon A. McCool, associate dean of student life; Brian R. Allen, director of the Campus Center; Dolores A. Passarelli, director of new student programs; Mariam Z. Boyajian, director of the Upward Bound program; John F. Custer, professor of communications and theater and director of the College's Performing Arts Series, and Douglas G. Cureton, assistant director for the Campus Center.

In a memo to all student affairs directors, Penfield requested that there be "a program dealing with the issue of racial understanding and appreciation incorporated into every student/staff training program which occurs during (the) 1987-88 (academic year)."

"Each director (of various student activities) is responsible for the implementation of this recommendation," said Penfield.

In addition, William M. Baird, director of athletics, intramurals and recreation, will work with other members of the athletic department staff "to insure that an appropriate program is presented to each intercollegiate athletic team prior to the beginning of each sport season."

Penfield said he felt the actions planned on the ad hoc committee's recommendations "will pay dividends in terms of a campus environment which is more positive and conducive for the educational pursuits of all who frequent this institution."

### Policy for cancellation of classes and/or the closing of the College

The College is always open except in extreme cases of inclement weather or other occasions when it is prudent for the administration to cancel classes or close the College.

Decisions to cancel classes and/or close the College can be confirmed by calling a recorded message at 456-9500.



## Council of R.I. College elects Chairman expresses concern over student retention

The newly elected chair of the Council of Rhode Island College, the chief legislative and regulatory agency of the faculty, says the first problem the Council will address this academic year is that of student attrition and retention.

Dr. Neil I. Gonsalves, professor of biology, termed the drop-out rate of students here "alarming" and said a "major effort of all segments of the campus community" is needed to change it.

"And, these (segments) are all represented on Council," said the chairman, citing changes in the Council by-laws whereby "representatives from every single department" now serve on Council.

The Council consists of the president of the College, three administrative representatives appointed by the president, 23 elected faculty members, and two students selected by Student Parliament.

Established in 1963 to examine and evalu-

ate College policies and recommend needed changes to "provide for the effective operation of the College," it meets at least once a month during the academic year.

Normally, the meetings also are open to any faculty member who may attend as an observer.

Others recently elected are: Dr. Richard R. Olmsted, professor of philosophy, secretary; Dr. C. Annette Ducey, professor of English, and Dolores A. Passarelli, director of new student programs, executive committee members.

## Follow the Leaders

The second annual Student Organizational Effectiveness Conference will be held Sept. 11 and 12 at the Alton Jones Campus of the University of Rhode Island in its Environmental Education Center.

The conference is geared to the enhancement of leadership skills.

All student leaders are invited to attend to meet one another and exchange ideas and concerns, says Renee Perreault, secretary of Student Community Government.

This year's theme is "Follow the Leaders."

Session topics will include "Group Interaction," "Hidden Agendas," "Leadership Styles," and "Viva la Difference." Cooperative activities will also be planned.

A bus will leave from the Student Union on Friday, Sept. 11, at 3 p.m. sharp and return Saturday at 4 p.m. Three meals will be included and linen provided.

Registration fee is \$5. For more information or to register, call the Student Community Government office at Ext. 8088.

**AMERICA'S  
ENERGY IS  
MINDPOWER**



REACHING HIGH: Lynn Flaherty of Mt. Saint Charles Academy and Peter Pogacar of Bishop Hendricken, two of the 63 students from 39 Rhode Island high schools who attended the 4th annual Governor's Summer Program in Science and Math here and at P.C., enjoy a picnic break. (What's News Photo by Gordon E. Rowley)

## Special Services re-funded for 3 years by U.S. Dept. of Education

Rhode Island College's Special Services program, designed to help disadvantaged students pursue post-secondary education, has been funded for another three-year cycle, according to an announcement from the Washington office of U.S. Sen. John H. Chafee (R-R.I.).

The program, which has received federal funding through the Department of Education steadily since 1970, will get \$125,773 for the 1987-88 year, the first in the cycle.

"It was a little less than we had requested, but it was good news," said Joseph L. Costa, program director.

The program locates young adults with ac-

ademic potential who are economically or educationally disadvantaged, or who have a physical handicap, and are in need of special support services to complete their education. It serves each year about 300 students, representing 15 to 20 nationalities, throughout Rhode Island.

Those served by the program have high school diplomas and are either referred by others or recruited by the College program.

"The people at Special Services are doing an outstanding job and should take pride in the hundreds of students they have helped who now have college degrees," said Chafee in his announcement of the grant.

## Looking for volunteers

Volunteers in Action (VIA), Inc., a state-wide voluntary action center established in 1969 to promote volunteerism in Rhode Island, is looking for volunteers for three of its programs: The Samaritans, the Big Sisters Association of Rhode Island, and the state Department of Education's advocates for handicapped children.

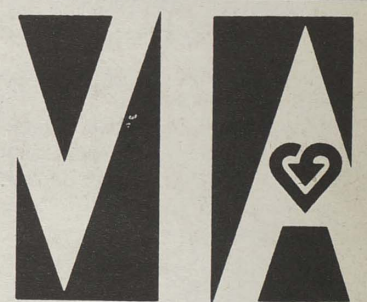
The Samaritans is Rhode Island's suicide prevention agency. It needs volunteers to maintain its 24-hour phone service. They must be over 18 and able to give four hours a week and one overnight a month to answer phones at the center. Volunteers are given 18 hours of advance training. Call Nancy Heroux at 272-4243.

The Big Sister Association has a new project called "One to One" by which women volunteers provide companionship and guidance to adolescent mothers. Volunteers must be willing to spend three to four hours a week for at least a one-and-a-half year period. On-going training provided. Call Sandra Wilkie at 461-0310.

Department of Education needs volunteers to serve as education advocates for handicapped children between the ages of 3 and 18 who are in the care of the Department for Children and Their Families. Advocates represent the children with school officials in all educational matters. Generally, a few hours a month to meet with the child and school staff is sufficient.

A commitment of at least one year is asked. Six hours of training is provided volunteers. Call Bruce Nitterauer at 277-3840.

VIA's main office is at 229 Waterman St., Providence. Telephone is 421-6547.



**VOLUNTEERS IN ACTION**  
(401) 421-6547

## Who's Who

### Among Students in American Universities and Colleges AWARDS

Nominations to Who's Who are now being received by the Selection Committee which has established the following criteria:

1. Scholarship—  
Undergraduates: minimum cumulative index 2.5 and 60 earned credits completed as of Sept. 15, 1987.  
Graduates: minimum cumulative index of 3.25 and 15 earned credits completed.
2. Participation and leadership in academics and extra-curricular activities and service to Rhode Island College.
3. Service to the community at large.

Please complete the form below and return no later than Friday, Sept. 18, to the Office of Student Activities, 314 Student Union.

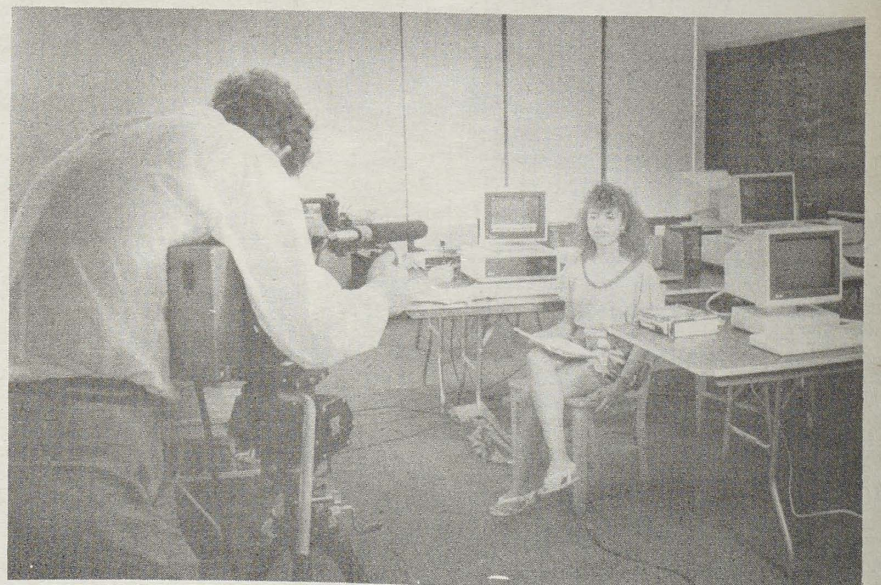
I nominate: Name.....

Address.....

Nominator.....

GRAD ☐ UNDERGRAD ☐

The deadline for applications from the nominees is Friday, Oct. 2. (Must be received by 4:30 p.m. on that date.)



AT&T FILM IN THE MAKING: Ester Benros, a senior at Rhode Island College, poses for sales video film on AT&T's software program, 'Writer's Workbench,' which has been used by the College Writing Center to help improve students' writing skills. The UNIX collegiate edition software is a comprehensive set of text revision and word processing tools for use with the AT&T 3B2 Computer. (What's News Photo by Gordon E. Rowley)



# College Begins Anew

Thursday, Sept. 3, college life began anew on campus as hundreds of both new and returning students descended upon the college of their choice either to begin or continue their pursuit of higher education.

Amid talks of strike and the excitement of beginning another academic year, the atmosphere was electric. Hopes were high. Nothing, it seemed, could dampen the enthusiasm for a fresh start.

Preparing to start another year, Cindy Almonte (at right) of Trumbull, Conn., a sophomore, is assisted by her father, Ralph, as she moves into Thorp residence hall.

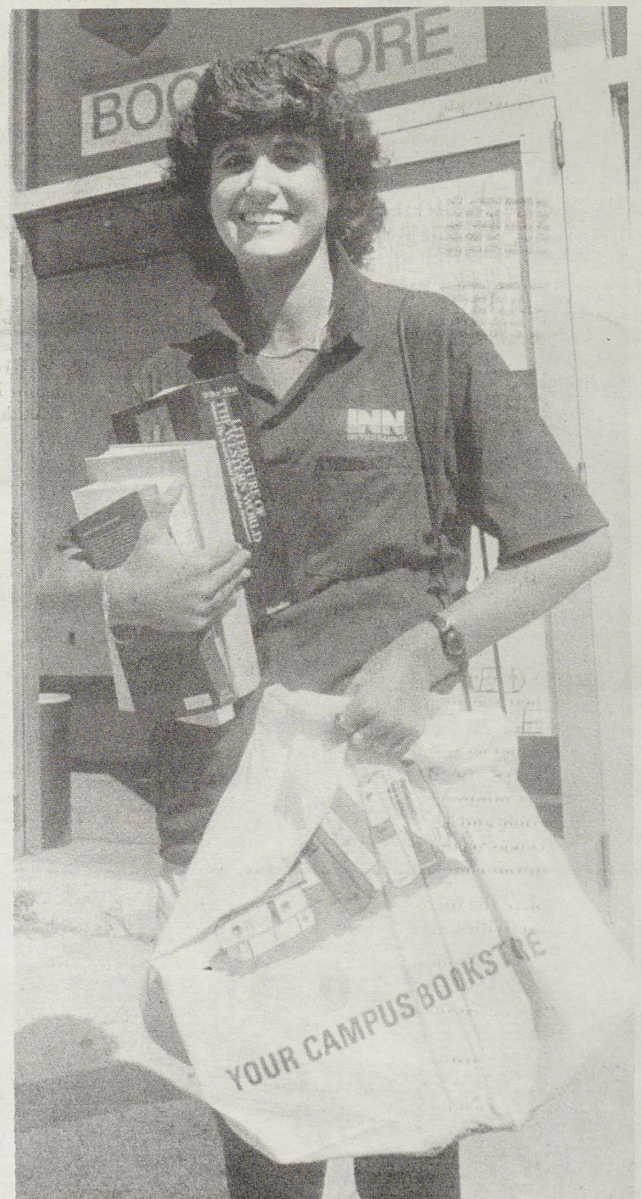
Immediately below, Kellee Russo (at left) of Norwich, Conn., tucks away a considerable stock of groceries in her Webber hall suite with the help of Rita White of Ashaway, R.I. 'These,' says Kellee, 'are for late night snacks.'

At bottom, Melissa Torow of Milford, Conn., hangs a poster in her dorm room as a reminder of home.

At bottom right, Kim Souza, a freshman from Portsmouth, emerges from the College bookstore ready to start the semester.



*What's News Photos*  
by  
*Gordon E. Rowley*





# ★NEW FACULTY

(continued from page 1)

DR. ULKU DICLE of Bristol, associate professor of economics and management; Ph.D. from the University of Southern California; previously taught management and related subjects at both undergraduate and graduate levels.

DR. RICHARD FELDSTEIN of Providence, assistant professor of English; Ph.D. from SUNY at Buffalo; formerly taught courses in American literature, feminism, and film.

DR. WILLIAM FENNESSEE from Carbondale, Ill., assistant professor in counseling/educational psychology; Ph.D. from Southern Illinois University where he formerly taught.

DR. D. RACHEL FILINSON of Providence, assistant professor of sociology; Ph.D. from the University of Aberdeen, Scotland, in sociology with a speciality in medical sociology. Filinson will be coordinator of the Gerontology Program.

KAREN HOLMES of Providence, instructor in mathematics and computer science; master's degree in computer science from Syracuse University; formerly with IBM and a graduate assistant at Syracuse.

DR. ALEMA KARIM of Providence, assistant professor of economics and management; bachelor's and master's degrees from Dhaka University in Bangladesh; master's and Ph.D. from Boston University; formerly on faculty at Framingham State and Curry colleges.

DR. THOMAS MALLOY from Connecticut, assistant professor of psychology; Ph.D. from University of Connecticut, Ed.D. from the University of Northern Colorado; formerly a research associate at University of Connecticut.

DAVID PULLMAN from Worcester, Mass., assistant professor of economics and management; M.B.A. in international business from Syracuse University; has extensive business experience and is active in consulting, specializing in computer-aided research methods for marketing operations.

DR. MAUREEN REDDY of Providence, assistant professor of English; Ph.D. from the University of Minnesota; formerly taught at Boston College, the University of Minnesota and Haverford College.

MARCIA J. RUST of Foster, instructor in mathematics and computer science; master's degree in mathematics education from SUNY at Oneonta; formerly taught high school math and has been guest lecturer at several colleges.

DENNIS J. SACCOIA of North Providence, assistant professor of economics and management; master's degree in management from Lesley College; owner and director of the Rhode Island Business Institute in Pawtucket for past 10 years.

DR. BARBARA SCHAPIRO of Littleton, Mass., assistant professor of English; Ph.D. from Tufts University; formerly taught at Boston and Harvard universities.

LAURIE E. SLOAN of Providence, assistant professor of fine arts; M.F.A. degree from the Tyler School of Art; formerly an instructor at Kutztown University, Pennsylvania.

DR. SUSAN WATTS from Evanston, Ill., visiting assistant professor of geography; Ph.D. from the University of Liverpool; formerly taught at the University of Ilorin, Nigeria, and Northwestern University.

## Administrative Staff Appointments

DR. DAVID CAVANAGH of Providence, director of the Value Added Assessment Project; Ph.D. from Brown University; formerly a programmer/analyst and has taught at the University of Massachusetts and Wentworth Institute.

JO-ANN DAVIS of Pawtucket, food production manager; bachelor's degree from University of Rhode Island; formerly food service manager for Senior Inn, Inc.

A. SCOTT FRAHLICH from Shrewsbury, Mass., residence hall director; bachelor's degree from Illinois State.

PAMELA GILBERT of North Attleboro, secretary to the provost; formerly executive secretary to the president of SAB NIFE in Lincoln.

JANE LINDBERG of Warwick, receptionist/secretary in the Office of the President; previously served as secretary to the dean at Johnson & Wales College.

EILEEN MILNER of Narragansett, accountant II in the department of administration and finance; bachelor's degree from the University of Rhode Island; formerly a senior accountant.

RICHARD PAYNE from Delaware, Ohio, special assistant to the president for development; M.Ed. from Xavier University; formerly director of development at Ohio State University.

STEVEN PLATT of Cranston, assistant manager of the College bookstore; associate's degree from the Community College of Rhode Island; formerly bookstore department manager at CCRI's Lincoln Campus.

DR. ROBERT SCHUCK of North Providence, dean of the School of Education and Human Development and professor of educational psychology; Ed.D. from Arizona State University; formerly Distinguished Visiting Professor at Mississippi State University.

NANCY STEVENSON of Norton, Mass., costume assistant in communications and theater department; M.F.A. degree from Brandeis University; formerly a graphic designer.

## Other Staff Appointments

CYNTHIA BERTONCINI, senior clerk stenographer in continuing education.

BARBARA BLACKWELL, senior clerk stenographer in audiovisual.

DAVID BUTLER, janitor in custodial services.

JANE CARACCIA, senior clerk stenographer in new student programs.

ANTHONY CARLINO, technician III in audiovisual.

JAMES CONNORS, college police officer in security and safety.

MARY DeWAELE, domestic housekeeper in custodial services.

LORI DIDONATO, fiscal clerk in the College dining services.

ROBERT FISH, janitor in custodial services.

DONNA GUARINI, senior clerk typist in academic affairs.

NANCY JAYNES, fiscal clerk in accounting.

ELEANOR LOUGH, senior clerk typist in Continuing Education.

JOHN MANCINI JR., laborer in landscaping and grounds.

LINDA MARTINO, senior clerk typist in the history department.

JAMES MCCARTHY, janitor in custodial services.

IDA McNALLY, principal clerk stenographer in the records office.

NANCY MORETTI, senior clerk typist in accounting.

LUCIA NERI, fiscal clerk in accounting.

KIM RAMOS, janitor in custodial services.

DORIS REMILLARD, senior clerk typist in accounting.

ARTHUR RICHARD, college police officer in security and safety.

EDWARD ROTONDO, principal janitor in custodial services.

JANICE SANTUCCI, senior clerk typist in political science.

CLEMENTINE SISSON, senior clerk typist in the Adult Reading Academy.

LAURENCE SPEAKS, electrician supervisor in maintenance and repair.

NOEL WOLONY, head soccer coach in athletic department.

GLORIA ZAROOGIAN, principal clerk typist in accounting.

# Book Look

## Facts About Recently Published Books by Rhode Island College Faculty and Staff

### AUTHOR:

Francis J. Leazes Jr.

### TITLE:

Accountability and the Business State/The Structure of Federal Corporations

### PUBLISHER:

Praeger Publishers, a Division of Greenwood Press, Inc.

### PUBLISHING DATE:

April 1987

### COST:

\$35.95/149 pages/hardcover

### CONTENT:

Introduction, historical development, creating federal corporations, the Executive, Congress and corporations. Federal corporation finances. The courts and federal corporations. The business state. Bibliography. Index.

### IN BRIEF/SYNOPSIS:

Challenging the widely held notion that there is a clear boundary separating the public and private sectors, *Accountability and the Business State* argues that the public sector contains a group of federally established corporations that mirror the structures and processes of the private sector. Calling this group of corporate agencies "the Business State," the book offers the first comprehensive analysis of the various types of federal corporations involved and assesses the degree to which their structures promote responsiveness to executive direction, congressional concerns, and the public.

### ABOUT THE AUTHOR:

Dr. Francis J. Leazes Jr. is an assistant professor of political science and director of the college's Public Administration Program.

# Book News

## Textbook authors schedule Las Vegas meeting

Textbook Authors Association, formed in the spring of 1987, has scheduled its first regular meeting for Dec. 21 in Las Vegas. All textbook authors and prospective authors are invited.

For membership information or information about the meeting, contact the Textbook Authors Association, Box 535, Orange Springs, Florida 32682, or call Mike Keedy at (904) 546-1000.

The association has already instituted a newsletter called the "TAA Report" which may be published quarterly. According to the first issue (Summer 1987) topics of concern to authors will be addressed by the association such as the escalating cost of texts, working conditions and compensation for authors, the problem of sample copies of college texts that "find their way into the bookstores to be sold," etc.

# Calendar of Events

## September 7-21

### Monday, Sept. 7

Labor Day. The College will be closed.

### Tuesday-Thursday, Sept. 8-10

Noon — Mass. Student Union 304.

### Wednesday, Sept. 9

3:30 p.m. — *Men's Soccer*. Rhode Island College vs. Stonchill College. Away.

4 p.m. — *Women's Cross Country*. Rhode Island College vs. Stonchill College. Away.

### Thursday, Sept. 10

7 to 9 p.m. — *Tony Chimento/Recent Paintings* to open at Bannister Gallery, Art Center. Exhibit to be on display through Sept. 30.

8 p.m. — *Dana Carvey, Saturday Night Live's "Church Lady"*, to perform at Roberts Hall auditorium.

### Saturday, Sept. 12

1 p.m. — *Men's Soccer*. Rhode Island College vs. University of Rhode Island. Home.

1 p.m. — *Women's Volleyball*. Rhode Island College vs. Stonchill College. Home.

### Sunday, Sept. 13

10 a.m. — *Sunday Mass*. Student Union 304.

7 p.m. — *Sunday Evening Mass*. Browne Hall, upper lounge.

### Monday-Thursday, Sept. 14-17

Noon — Mass. Student Union 304.

### Wednesday, Sept. 16

Noon to 2 p.m. — *Student Organizations Day*. Representatives from student organizations at the College will be available to describe their organization's activities. Area

adjacent to the Student Union. In case of inclement weather, Student Union ballroom.

3:30 — *Men's Soccer*. Rhode Island College vs. Bryant College. Home.

3:30 p.m. — *Women's Tennis*. Rhode Island College vs. Stonchill College. Away.

7 p.m. — *Women's Volleyball*. Rhode Island College vs. University of New Hampshire. Home.

### Thursday, Sept. 17

Noon to 7 p.m. — *All Together Now*: multicultural cookout, entertainment. Campus Center. All welcome.

### Saturday, Sept. 19

9 a.m. — *Women's Volleyball*. Rhode Island College at Roger Williams Invitational with Vassar, W. Connecticut, Westfield, Framingham, Mass. Maritime and E. Nazarene.

11 a.m. — *Men's Cross Country*. Rhode Island College at Bryant Invitational at Bryant College.

Noon — *Women's Cross Country*. Rhode Island College at Bryant Invitational at Bryant College.

1 p.m. — *Men's Soccer*. Rhode Island College vs. Fitchburg State College. Home.

1 p.m. — *Women's Tennis*. Rhode Island College vs. Westfield State College. Home.

### Sunday, Sept. 20

10 a.m. — *Sunday Mass*. Student Union 304.

7 p.m. — *Sunday Evening Mass*. Browne Hall, upper lounge.

### Monday, Sept. 21

Noon — Mass. Student Union 304.

# The Anchor

Rhode Island College's newspaper  
by and for students  
CALL: 456-8280





## Keeping Score

with Dave Kemmy

### Spring sports re-cap

The weather wreaked havoc during the entire spring season, with many events being canceled due to rain. Following is a brief synopsis of how the five spring sports ended up faring.

The baseball squad finished with a 12-12 record, bowing in the first round of the ECAC New England Division III Tournament 3-2 to Southeastern Massachusetts.

The Anchormen made it to the finals of the Rhode Island Collegiate Tourney by beating Roger Williams College 8-3, but due to the weather the Championship was never played.

Len Silva was the team's top hitter with a .457 average, Greg Grall was next at .358 and Jim McGlynn followed at .295.

The women's softball squad finished with a 10-8 record, but was not chosen for an ECAC bid. The squad truly deserved a bid, based on their strong schedule and the fact they were the defending champions in the post-season tourney.

Senior pitcher Cristina Alnas had a superb season finishing with a 9-4 record and a .857 ERA. Alnas and Kathy Pinto were both named to the New England Division III Coaches Association All-Star Team.

Pinto was the team's top hitter with a .340 mark, Kristen Mariniello was next at .326.

The men's track and field team finished with a 4-4 record and took fifth place in the Tri-State meet.

Junior Jesus Berrio earned All-Eastern and All-New England honors in the 800 meters and set the school record in the event. Mike Leddy also had a fine season earning All-Eastern and All-New England honors in the long jump and the triple jump. Another star performer, Jim Bowden, earned All-New England honors in the 5,000 meters.

The women's track and field squad finished with a 5-12 record and placed sixth in the Tri-State Championships.

Freshman Maria Teeman had a fine season, capped off by her earning All-ECAC honors by placing second in the discus. She also set the school record in the event on three different occasions.

The men's tennis squad finished with a 4-6 record. Freshman Marc Dubois captured the Consolation Round Tournament in the New England Division III meet. He also had the top singles record on the team at 8-2.

#### Fall sports getting underway

The fall sports season is upon us this week with the soccer, women's cross country and women's volleyball squads all in action.

The soccer team will open their season Wednesday, September 9 at Stonehill College under first-year Coach Noel Wolny.

Wolny brings a great deal of experience to the program. He has coached at the college level since 1983, most recently serving as head coach at Alliance College in Pennsylvania.

Wolny has his work cut out for him as he inherits a team that went 1-13-1 a year ago. Several top players return, however, including the Anchormen's leading scorer, junior Eusebio Lopes. Senior Sarin Pak also returns up front, as do sophomores Bob Izzo and Tom Raspallo.

Senior Luis Oliveira and sophomore Jim Peters return on defense, both were solid performers a year ago. Returning in the mid-field is senior Joe Brady, one of the top players over the past few years.

Several newcomers will be counted on heavily. Goalie Patrick McGuirl should be a big plus to the team as will sophomore transfer Peter Connell, who should shore up the offense.

An impressive group of freshmen are also on hand. Scott Southland, Tom Cafaro, Mike Guernon, Bruce Bradley and Brian Allen are all fine players.

The squad's first home game is Saturday, September 12 against URI at 1 p.m.

The women's cross country team also opens their season September 9 when they travel to Stonehill for a dual meet.

Head Coach Matt Hird has a number of solid veterans returning, including senior Karen Ceresa who didn't compete last season because she was on a National Student Exchange. She was one of the top runners for the Anchorwomen two years ago and will hopefully return to that form this year.

Other returnees include Leslie Cabral, Mary Beth Crane, Lisa D'Antuano, Nancy Gillooly and Janine Landry.

Three impressive newcomers bolster Hird's line-up. Freshman Carolyn Walsh captured the Rhode Island High School Individual Championship her junior and senior years and led Rogers High School to the state title as a sophomore. Elizabeth Wolf was an all-Stater and Junior Olympic qualifier and Jennifer Ouimette had a sparkling career, earning All-State honors as well.

The women's volleyball squad will be in action for the first time this Saturday, September 12 when they entertain Stonehill.

The lady spikers have several top players returning, including Rhode Island College Invitational Co-MVP Lori Botelho. Roger Williams College All-Tourney Team selectees Maureen McKay and Sharon Ferns also return after fine freshman seasons a year ago. Also returning are Graziella Giampaoli, Brenda Kiernan and Ann Lussier.

The squad posted a 22-11 record last year, the best mark since 1982-83. They were knocked out of the ECAC Northeast Region Tourney in the semi-finals.

Newcomers who should help Coach Kristen Norberg's team include Lisa Broe, Gina Maria DeGaetano, Sheila Marchand and Jennifer Schulte.

## Saturday Night Live 'Church Lady' to perform here Sept. 10

The sanctimonious holy terror known as the "Church Lady" on television's *Saturday Night Live* will bring his special brand of "weird obnoxiousness and endearing innocence" to the stage at Rhode Island College's Roberts Hall auditorium on Thursday, Sept. 10, at 8 p.m.

Dana Carvey, SNL's "latest bustout talent" according to *Newsweek*, is being

presented by the Campus Center Program Council, the Office of Residential Life and Housing, and Programming.

Tickets are available in advance at the Student Union Information Desk. Tickets are \$6 with a Rhode Island College I.D. and \$10 for all others. Student tickets are also available at Central Desk. On the day of the show all remaining tickets will be \$10.

### Reunion '87...

## Alumni Cabaret revived

Rhode Island College's alumni "Reunion '87" will feature a revival of the Alumni Cabaret, the proceeds from which will go towards a renovation of Alumni House, the College's oldest building.

The cabaret, featuring a dozen alumni performers singing and dancing to tunes from the 1920s to 1980s as well as some of the more current Broadway hits, will take place Sept. 24-26 at 8 p.m. in the Student Union Ballroom.

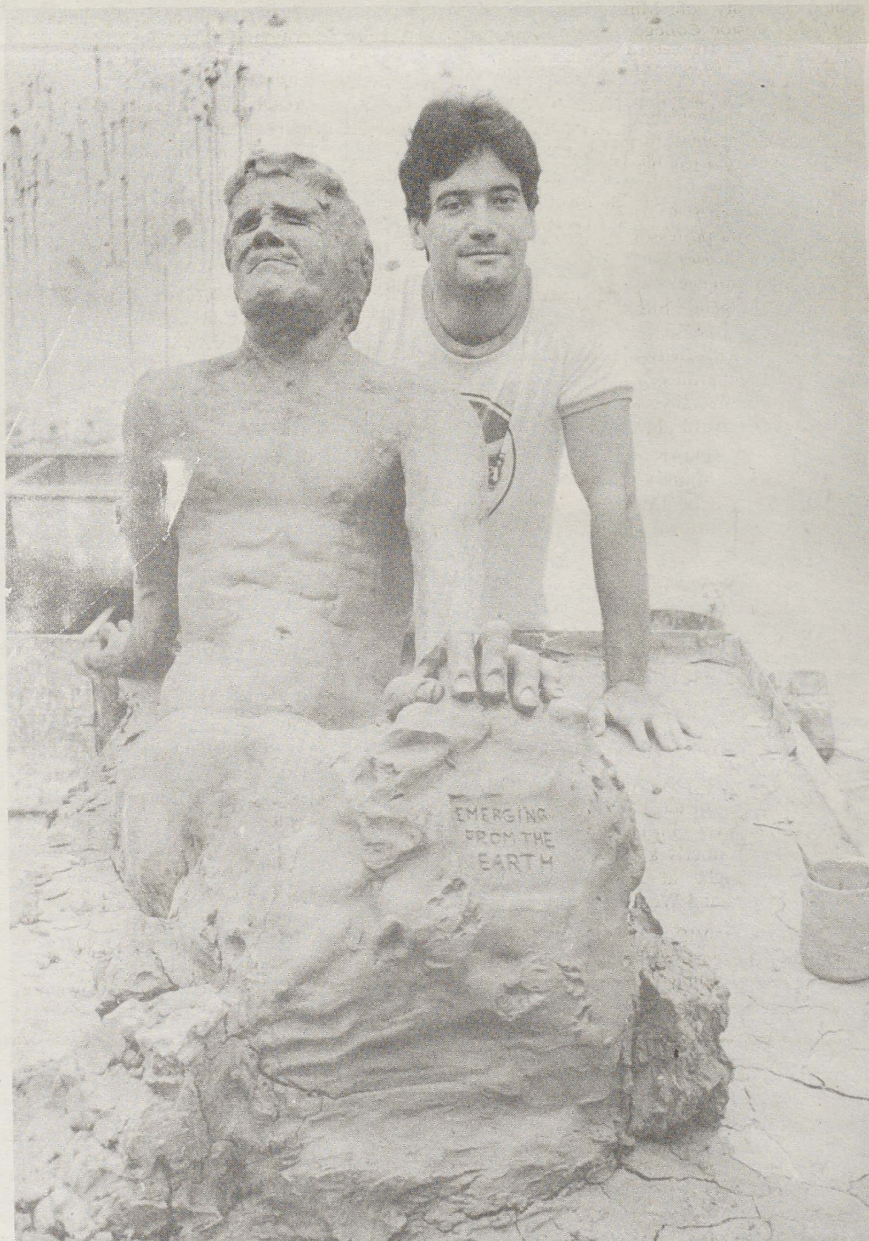
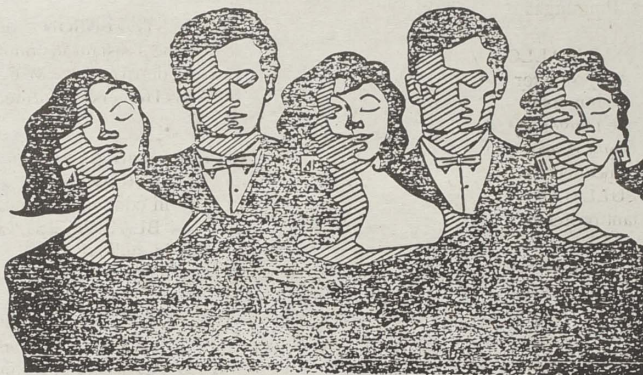
Douglas G. Cureton, Class of '80, is the director.

Tickets are \$6 for general admission; \$5 for students here. Tickets and/or advertisements in the program may be purchased by

contacting the Rhode Island College Alumni Office, Providence 02908 or calling 456-8086.

Performers in the cabaret, the first in about six years says Holly L. Shadoian, alumni affairs director, are: Kara Baglini, '86; Sandy Boyer '72; Lisa Byrnes '86; Phil Croome '72; Roberta DeAndrade '59; Danielle Grise '87; Hank Guillotte '59; Raquel Hernandez '84; Karen McKenna '85; Joe Neri '69; Shadoian '73; and Joseph Sousa '69.

Alumni House was built as a private residence in the 1930s and used by the Doorley family. The College purchased it in 1971 for use as an alumni office.



**A MAN AND HIS SCULPTURE:** Joseph Zompa of Providence, a junior art major at Rhode Island College, poses with his life-size, water-based clay sculpture of a man 'Emerging from the Earth,' which he created this summer in the College Art Center. Because the summer heat would cause the art work to break up within a day or two, he took photos of it to include in his student art portfolio. (What's News Photo by Gordon E. Rowley)

## ★ GUARDO

(continued from page 1)

vice president for student affairs.

The president said she has told this group to focus on actions. But she emphasized that "retention is the task of each and every one of us at the College."

She also said that we need to listen to students and to continually seek answers to the question "How do we make this a more student-centered environment?"

The president identified other agenda items for the coming year that relate to the goal of improving the quality of life on campus. These include:

- appointing a task force to determine how we can best serve adult learners (who make up about 37 percent of our student population);
- addressing the topic of racial understanding in order to ensure that everyone in our diverse educational community feels a part of that community;
- considering the question of whether or not we need to increase campus residence hall space and making a decision on that issue;
- realizing that most of our students are commuters, looking into how we can help

them to fit into campus life in order to enhance their educational experience.

In addition, the president identified the following agenda items that will carry over from last year and continue during 1987-88:

- the renovation of Whipple Gymnasium into a center for technology;
- planning for the recreation center to be constructed on the northeast side of campus;
- developing a new College promotional campaign.

The president also noted that additional projects may derive from the Governor's Excellence Fund. She said she was impressed with the number and high quality of the proposals developed by the College and thanked those who prepared them for their hard work under tight deadlines.

In concluding her remarks, President Guardo said that we have before us a real and immediate challenge, that is to "work together harmoniously toward a common agenda."

She concluded that we at Rhode Island College "are a formidable force when we pull ourselves together on a single issue."





# The Arts at Rhode Island College

## Senegal dancers to kick off Performing Arts Series season

The National Dance Company of Senegal, composed of 40 dancers, singers and musicians, will bring their "joyous energy, rhythms and spectacular native costumes" to the stage in Roberts Hall auditorium on Wednesday, Oct. 21, kicking off the College's Performing Arts Series season.

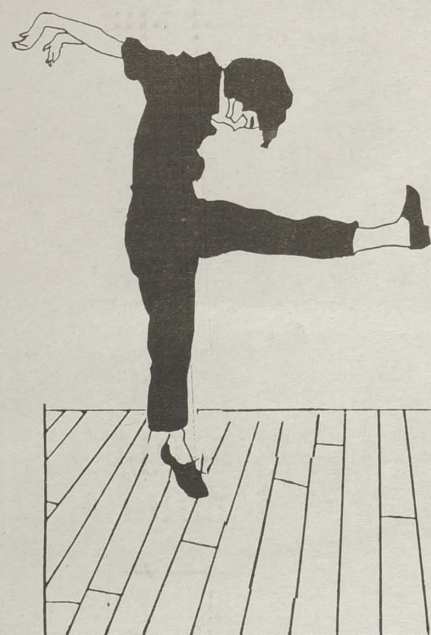
Other performances scheduled in the series this semester are the Modern Jazz Quartet on Nov. 17 and The Famous People Players on Dec. 8.

## R.I. College Dance Co. fall events include open classes, concerts

The fall season begins August 30 for the Rhode Island College Dance Company when it offers open classes with visiting choreographer Deborah Wolf of Boston.

The classes for dance company and non-dance company members—including the general public—will take place in the Walsh Center, Room 106, starting at 10 a.m. each day through Sept. 3.

General admission is \$5; students here, \$3.



All series performances are in Roberts Hall at 8 p.m. Ticket prices are: \$12 general admission, \$8 College faculty/staff, senior citizens and non-Rhode Island College students, and \$3 for students here.

All seating is reserved for performances throughout the season. Tickets may be purchased in advance by mail or at the box office prior to each performance as well as on the evening of each performance, depending on availability.

For more information call 456-8194.

Wolf is the artistic director of the Concert Dance Company of Boston and a "respected choreographer," according to Dante DelGiudice, dance company director.

The dance company will present its annual Mini-Concert Series in Roberts Hall auditorium at 9:15 and again at 10:30 a.m. each day Oct. 14-16.

Offered free to all Rhode Island School children (grades K to 12), the mini-concerts offer an educational modern dance program presented in lecture/demonstration format.

Open classes will be offered again Nov. 8-14 with choreographer Daniel McCusker, artistic director of the Ram Island Dance Company in Maine. McCusker is a "widely recognized" post-modern dance choreographer, says DelGiudice.

The dance company's Winter Concert, to be performed with the Concert Dance Company of Boston, is set for Dec. 3 in Roberts Hall auditorium beginning at 8 p.m.

A celebration of repertory dance, it will feature the works of Deborah Wolf.

General admission is \$6; College faculty and staff, senior citizens and non-Rhode Island College students, \$4; students here, \$2.

## Concert dates announced

Rhode Island College concert dates for the fall semester have been announced.

The Rhode Island College Symphony Orchestra is set to perform on Oct. 19 and wind ensemble on Nov. 22. Programs for both concerts are to be announced.

The College chamber singers combined with the First Baptist Choir, the Rhode Island College Brass Ensemble and Chamber Orchestra will perform Nov. 29 in the First Baptist Church, 75 North Main St., Providence, at 3:30 p.m.

On Dec. 7 the College symphony orchestra and chorus will perform, and on Dec. 13 the chamber singers will repeat the Nov. 29 concert at the Christ Church in Swansea at 3 p.m.

Unless otherwise noted, all concerts will take place in Roberts Hall auditorium starting at 8:15 p.m. Most are free to the public.

## Chamber Recital Series announced

Chamber Recital Series at Rhode Island College lists eight performances for the fall semester beginning with The Henschel Ensemble on Sept. 30.

The Henschel Ensemble is a trio of musicians whose musical talents range from the Elizabethan period to the 20th Century. Members are Thomas Greene, guitar; Delight Immoneu, oboe, and Susan Wood, bassoon.

Other performances and their dates are: Soprano Jane Waters, Oct. 7; Pianist Peter Basquin, Oct. 14; the Melusine Quartet, Oct. 21; Bass baritone David Laurent, Oct. 28; Pianist Carole Lee, Nov. 4; the Charleston String Quartet, Nov. 18, and the Rhode Island College Faculty Trio, Dec. 9.

All performances take place in Roberts Recital Hall at 2 p.m. Admission is free for most recitals.

## Bannister Gallery exhibits set

Fall semester exhibits planned at the Bannister Gallery in the Rhode Island College Art Center begin with the recent paintings of Tony Chimento from Sept. 10-30.

The exhibit will include recent large-scale photo-realist paintings by the nationally recognized Provincetown artist.

Chimento's paintings explore the human figure and environment.

"Through the use of the diptych and the fragmented image, he goes beyond representation and incorporates a sensation of time and change," according to Dennis O'Malley of Bannister Gallery.

Other exhibits listed and their dates are: RIC 9, an exhibition of works by nine award winning students of the college art department, Oct. 8-29; Alternate Views/Photographs by Reginald Jackson and K.C. Perry, Nov. 5-27; Graduate Exhibition, Dec. 3-11, and Senior Show, Dec. 16-23.

There is no admission charge. Exhibit openings take place from 7 to 9 p.m. on the first day of each exhibit. The public is invited.

Gallery hours are Monday through Friday, 11 a.m. to 4 p.m. and Tuesday and Thursday evenings from 6 to 9.

## College theater season starts Oct. 8 with Oscar Wilde's *The Importance of Being Earnest*

Oscar Wilde's "trivial comedy for serious people," *The Importance of Being Earnest*, will be performed by the Rhode Island College Theatre Oct. 8-11, kicking off the company's fall season.

The performance—as all theatre company performances unless otherwise noted—will be in Roberts Hall auditorium. Curtain time is 8 p.m. Thursday through Saturday, and 2 p.m. on Sunday.

A 9 a.m. performance for high school students only will be offered that Friday. Elaine F. Perry, assistant professor of communications and theatre, will direct.

Admission is \$5.50 general, \$4.50 for College faculty and staff, senior citizens and non-Rhode Island College students, and \$2.50 for students here.

*Waiting for Godot* by Samuel Beckett is scheduled for Nov. 12-15. Director will be Dr. P. William Hutchinson, professor of communications and theatre.

A performance for high school students is tentative.

In addition, a selection of plays and workshop productions will be presented periodically by The Growing Stage, the student theatre organization.

These events will be announced in advance in *What's News* and the newspapers.



WAITING FOR ADAM is the title of this oil painting by Tony Chimento whose 'Figure and Ground' exhibit is at the Bannister Gallery Sept. 10-30.