



WHAT'S NEWS

AT RHODE ISLAND COLLEGE

Vol. 10, No. 3 October 2, 1989

Mr. Olsen

214-bed residence hall approved by BOG

Rhode Island College, long faced with over-crowding in its residence halls, has had its proposal for a new 214-bed residence hall approved by the state Board of Governors for Higher Education.

Estimated cost of the proposed five-story residence has been set at \$6,131,000. It would be located beside Browne Residence Hall on College Road.

In presenting the proposal in June, President Carol J. Guardo cited an immediate need for more spaces in the wake of a 6.2 percent rise in enrollment over last year.

"We believe this is critical to the forward momentum of the College, its future enrollments and to the environment provided for our students," Guardo said.

The latest rise, from 8,433 students to 8,955, including graduate and part-time students, continues an upward trend that began last year after a period of enrollment decline from 1983 to 1987.

The 4,293 full-time undergraduate degree candidates include a record 1,165 freshmen this year—14 percent more than the year before.

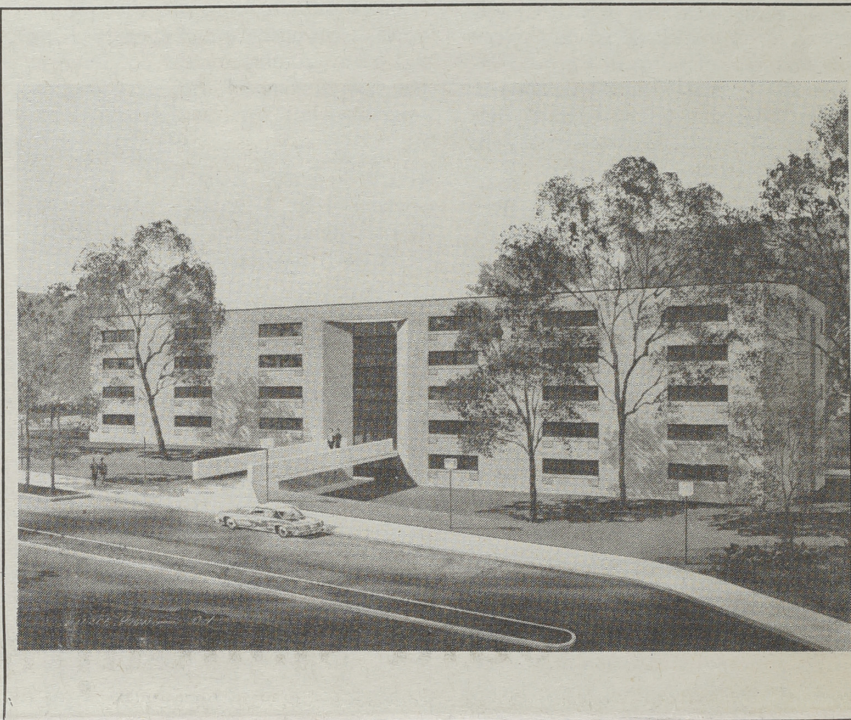
The proposed new dorm would bring the number of on-campus beds to 834. It is seen as a first step toward a goal of housing 1,200 students, or a little more than a quarter of the full-time undergraduates.

Guardo says the College has made residential space its highest priority this year, despite a projected downward trend in high school graduates through 1993.

That "challenges the institution to take additional steps which will stabilize or enhance its enrollment," the president says, noting that the option of on-campus housing is "a potent recruiting tool."

The proposal also notes that the supply of off-campus housing is diminished as apartments are converted into condominiums and rents are rising, adding to the pressure for on-campus rooms.

A need for added housing was noted on page 1 of the very first issue of *What's News at Rhode Island College* on Sept. 2, 1980. A fifth dorm was proposed in the early 1980s, but dropped because of financial constraints.



Architect's drawing of proposed new \$6 million residence hall.

Newly established Hall of Fame inducts nine

First time in Rhode Island College history

Rhode Island College will honor nine outstanding individuals who, for their contributions to the College through athletics, have been elected for induction into the newly established Athletic Hall of Fame here.

The first induction dinner is set for Sunday, Oct. 22, at the Quonset Point "O" Club in North Kingstown.

Those to be honored are:

Mrs. Linda Fisher Aitken, Class of 1966, who was a four-sport athlete and leader in the Women's Recreation Association for four years.

Cynthia DiSano, Class of 1968, a four-year member of the women's basketball team, who also played volleyball, softball and field hockey, and who was a member of the student senate for four years and senior class president;

Edward S. Bogda, an assistant professor of health and physical education from 1960 until his death, who also served as head soccer coach for 17 years, head track and field coach for nine and golf coach for eight. He is the "winningest" soccer coach in the school's history with 82 career victories.

Daniel H. O'Grady, Class of 1935, who won the accolade of "Mr. Athletics" of the former Rhode Island College of Education (RICE) by his peers, served as the College's first director of athletics while coaching football, basketball, baseball, track and field as well as tennis from 1935 to 1945;

James M. Sullivan, Class of 1943, a leading scorer and captain of the basketball team, who later went on to play semi-professionally in Connecticut for about six years and coached high school basketball for 20 years, track and field for 16 and cross country for 12;

Michael Van Leesten, Class of 1965, who was an All-New England Division III selection in basketball and still holds the school record for most career rebounds and is third on the all-time basketball scoring list with 1,901 points;

James W. Donaldson, Class of 1940, who was known as "Gentleman" Jim Donaldson, played on the only men's football team in this College's history and was team captain. He also played basketball, baseball and was a member of the track and field team for four seasons. Later he was to serve as high school coach for 30 years in Rhode Island;

Raymond Huelbig, Class of 1972, who was a captain on the basketball team on which he starred for four seasons, is the only player in school history to score 1,000 points in two seasons of play and was named Rhode Island Small College Player of the Year for 1969-70, and stands fifth on the all-time scoring list with 1,472 points;

Rickie Wilson, Class of 1972, who is considered the most prolific scorer in basketball in Rhode Island College history and is still the school's all-time scoring leader with 2,653 points. He was chosen as an NCAA Division III Fourth Team All-American in 1969-70 and a Third Team All-American the following year, and voted Rhode Island Small College Player of the Year twice.

Further details on each of the inductees follows below.

The recommendation to establish the Hall of Fame had been submitted to the Athletic Policy Committee in March of 1988, was acted upon by the Council of Rhode Island College and approved by President Carol J. Guardo in December.

A Hall of Fame Committee was then established by William M. Baird, director of athletics, last March.

The committee consists of Patricia Moore, retired physical education faculty member; Armand I. Patrucco, professor of history; Holly L. Shadoian, director of alumni affairs; Crist H. Costa, professor of economics and management; Kenneth R. Walker, professor of secondary education, and Baird.

A number of screening meetings were held over the next few months. In late May the selection of the nine inductees was made, reports Baird.

Biographical Info

Aitken: "For the first time in my life, (at Rhode Island College) I got to compete against other women in organized games," she says, explaining that while growing up there were very few sports programs for girls, leaving her to learn by watching her brothers play. "I thought the sports program at Rhode Island College was great!"

Aitken, who now resides in Franklin, Mass., and teaches in Smithfield, was one of the first leading female activists in athletics at the College and has worked in the field of education since graduating.

DiSano: An advocate of women in sports, she served the Women's Recreation Association for four years, the last three as vice president. She is currently director of the John Lyman Center for the Performing Arts and University Facilities at Southern Connecticut University, and is a Ph.D. candidate at the University of Connecticut, specializing in education law, and a major in the Army Reserve military intelligence. She is a graduate of Cranston East High School.

Bogda: Like his father before him, he served the youth of Rhode Island and at Rhode Island College in a multitude of educational capacities through which he touched and influenced the lives of thousands of young people.

A private man and an outstanding organizer, he was "not a win-at-all-costs coach, but a gentleman and expected his players to be gentlemen. Rhode Island College was well represented by any team under his supervision because of his philosophy that you were a gentleman first, a good student second and a winning athlete third," according to his citation.

Prior to his untimely death, he had resided in Cumberland. In addition to his accomplishments here, he was very active in the American Red Cross for 25 years and as a swimming official and administrator for 25 years.

(continued on page 6)

Hall of Fame induction dinner Sunday, Oct. 22

Hall of Fame induction dinner is set for Sunday, Oct. 22, at the Quonset Point "O" Club, North Kingstown, at 6 p.m..

A reception with cash bar will be held from 4:30 to 5:30 p.m. Tickets are \$20. Checks should be made payable to Rhode Island College Athletics.

For more information call 456-8007 at the College or 885-2320 at the "O" Club.

Focus on the Faculty and Staff



SHARON RALLIS

Sharon F. Rallis of the Center for Evaluation and Research (CERRIC) was guest editor of the Rhode Island College sponsored issue of *Action in Teacher Education*, the Journal of the Association of Teacher Educators published this summer. Rallis has also had two chapters published in books on CPR recently.

Mary M. Wellman, associate professor of counseling and educational psychology and Lorna Ricci, (B.S. in psychology, Rhode Island College 1988) have co-authored a paper entitled, "The Monoamines: Biochemical Markers for Suicide?," which has been accepted for publication in the *Journal of Clinical Psychology*.

I. Atilla Dicle also spoke on "Recent Developments in Turkish Economy" at a meeting of the Rotary Club of Providence recently.

The Department of Mathematics/Computer Science notes that the September 1989 issue of the Math Association of America's *College Mathematics Journal* contains a review of "Women of Mathematics" by associate professors Barry Schiller and Helen Salzberg. This book is a collection of essays on 43 pioneering women mathematicians, (two essays of which were written by associate professor Ann E. Moskol).

Sister Mary Ann Rossi, CND of the Chaplains' Office has been appointed Director of Campus Ministry for the Roman Catholic Diocese of Providence.

An article titled "Japan in America: The Battle Creek Experience," by Ulku Dicle and I. Atilla Dicle of the Department of Economics and Management, co-authored by Raymond Alie of Western Michigan University, has been published in the *Journal of Management in Practice*, Vol. 1, No. 1, pp. 31-36.

Assistant professor Mary M. Foye received her Ph.D. from the University of Connecticut on July 6. She is presently on the faculty at Henry Barnard School.

Assistant professor of industrial technology, Steven King, has been elected as regional director of education for the American Production and Inventory Control Society (APICS). The international organization is made up of 67,000 professionals from business and industry. King will be responsible for the development and coordination of APICS education programs within the New England states.

King also presented a paper at the APICS Regional Education Director's Conference in Alexandria, Virginia in August, titled "Earned Certification: Do I Still Need APICS?"

Raymond L. Picozzi, professor of communications and theatre, was appointed to the first advisory board of *The Echo*, a newspaper serving the Italian community.



RAYMOND PICOZZI

Toll-free calling

Rhode Island College can now be reached from the following areas by dialing the locally listed numbers: North Kingstown: 295-8764; Portsmouth: 683-0120; Woonsocket: 766-5786.

Calls placed from these locations and exchanges are local calls and will not incur toll charges to the calling party or to the College.

These calls will terminate at the campus switchboard and will then be transferred to the appropriate campus extension.

For further information, contact James Cornelison at 456-8200.



THORP PROFESSOR for Distinguished Teaching in the combined School of Education and Human Development-School of Social Work is Judith DiMeo of Rehoboth, Mass., an associate professor of special education.

Research and Grants Administration:

Request for proposals

The Office of Research and Grants Administration will be providing information about requests for proposals (RFPs) on a regular basis in this column. Anyone interested in obtaining further information or applications and guidelines need only circle the number of the RFP on the coupon below and send it to the office in Roberts 312.

1. American Philosophical Society: General Research Grant Program. These awards support basic research in all fields of learning by those holding a doctoral degree or the equivalent. Grants are intended to help defray research costs such as travel and the collection and preparation of materials. Maximum award levels range from \$3000 to \$4000. This program has Feb. 1, Apr. 1, Aug. 1, Oct. 1 and Dec. 1 deadlines. NEXT DEADLINE: Dec. 1.

2. National Endowment for the Humanities: Elementary and Secondary Education in the Humanities. Grants support national and regional summer institutes (3/15 deadline), state and local collaborative projects, masterwork study, conferences, planning grants, special projects (12/15 and 5/15 deadlines), and other activities that improve the teaching of the humanities in elementary and secondary schools. Projects in western and non-western history and culture, English and American literature, and foreign languages are encouraged because these fields generally form the core requirements of school humanities programs. NEXT DEADLINE: Dec. 15.

3. Rockefeller Foundation: Residency Fellowships in the Humanities (Scholar Awards). Supports research residencies for scholars whose research furthers the understanding of contemporary social and cultural issues. Awards are tenable at 27 academic and cultural institutions for which deadlines fall between Dec. 1, 1989 and Feb. 15, 1990. Focus areas are international issues, foreign languages and literatures, cultures of non-western nations, and American cultural pluralism. NEXT DEADLINE: Dec. 1.

4. Harry S. Truman Scholarship Foundation: Harry S. Truman Scholarships. Provides scholarships of up to \$7000 per year to college juniors preparing for careers in public service. Up to three candidates may be nominated by any college or university. Deadline cited is for receipt of all documentation in support of nominations. DEADLINE: Dec. 1.

5. U. S. Department of Education: Fulbright Seminars Abroad. Provides opportunities for faculty teaching undergraduate humanities or social sciences courses to participate in short-term summer seminars focused on the history and/or culture of specified countries. Participants are expected to share their broadened knowledge of the host country with their students, colleagues and communities upon their return. Awards usually cover travel, tuition and living costs. DEADLINE: Dec. 1.

Office of Research and Grants Administration

Please send me information on the following programs: (Circle programs of interest to you.)

1. 2. 3.
4. 5.

Name:

Campus Address:

10/2/89

Special parking for Tech Center opening day ceremonies

As a result of the Wednesday, Oct. 11 opening day ceremonies for the Center for Industrial Technology and the positive response from invited guests and community leaders, special parking arrangements are planned for that day.

According to Kathryn M. Sasso, director of conferences and special events, "all spaces in parking lot C on the east side of Roberts Hall and all spaces normally reserved for the Board of Governors in lot D, plus the visitor's circle in front of Roberts Hall have been reserved between the hours of 7 a.m. and 3 p.m. to accommodate those attending the ceremonies."

Committee members organizing the day's event ask for the campus's cooperation in regard to parking and suggest that people car pool for the day.

Scheduled events include tours, a luncheon, ribbon cutting ceremonies, and remarks by Governor Edward D. DiPrete, President Carol J. Guardo, and chairman of the Board of Governors for Higher Education, Albert E. Carlotti.

Refreshments and open house tours of the multimillion dollar Center will be available at 3 p.m. for the entire campus community.

The Center is located in Whipple Hall, once referred to as Whipple Gymnasium, where conversion renovations were completed last February.

College to collaborate with DCF on recruitment, training of staff

A collaborative effort "has pretty much started" between Rhode Island College and the state Department for Children and Their Families on initiating and strengthening recruitment and training efforts in the social work profession.

The collaboration, announced jointly by Dr. Joseph J. Picano, DCF director, and Dean George D. Metrey of the College School of Social Work, will mean:

(1) Increased numbers of School of Social Work faculty will be working with the DCF staff development unit to provide in-service training for DCF personnel.

(2) Social work faculty here will serve as consultants to the DCF in developing curricula on state-of-the-art programs, services and issues affecting the social work profession.

(3) The School of Social Work will distribute social work examination notices to seniors here. Ten social work

students are currently serving as interns in a variety of areas within the DCF, reports Patricia A. Mathews, DCF spokesperson.

Picano says he is "very optimistic" that these new and renewed initiatives "will not only provide positive benefits to our existing staff, but will also aid us in our recruitment of social workers and other social service staff required by the department."

"I foresee the advantages that will be afforded to students who will have the opportunity to gain experience in child welfare through their field placement at DCF," notes Metrey.

In addition, he says, the school can provide assistance in "many aspects of training for existing staff (at DCF)."

The combined efforts, he adds, "can only result in ultimately providing better service to clients in need of human services."

WHAT'S NEWS AT RHODE ISLAND COLLEGE

EDITOR

Clare Flynn Joy

ASSOCIATE EDITOR

George LaTour

STAFF

Gordon E. Rowley, Photographer
Cynthia L. Sousa, Editorial Asst.
Ellen W. Hunt, Secretary

STUDENT STAFF

Christine Albanese, Calendar

What's News at Rhode Island College (USPS 681-650) is published biweekly throughout the academic year except during semester breaks by Rhode Island College Office of News and Publications Services, 600 Mt. Pleasant Avenue, Providence, RI 02908. Second-Class postage paid at Providence, RI.

Postmaster: Send address changes to What's News at Rhode Island College, Office of News and Publications Services, 600 Mt. Pleasant Avenue, Providence, RI 02908.

DEADLINE

Deadline for submission of copy and photos is noon the Tuesday before publication date.

TELEPHONE

(401) 456-8132

PRINTING

TCI Press

Alumni leads work to revitalize Olneyville

by Cynthia L. Sousa

The Olneyville section of Providence, like many other poor communities is in desperate need of help.

Problems such as drug dealing and vandalism plague the area. Housing is dilapidated and neglected by absentee landlords.

In the center of this 4-mile region lies Nickerson Community Center. At 106 years old, it is the oldest multi-service agency in Rhode Island. Funded by the United Way and state and federal funds, the center provides a variety of educational, social and health care services to residents.

Those who work for the non-profit center are desperately trying to save Olneyville from turning into a ghetto.

Maureen J. Mercer, Rhode Island College class of 1983, is one whose efforts to improve Olneyville should not go unnoticed.

Mercer started working for Nickerson Community Center as a housing coordinator about a year ago. She soon realized that the neighborhood needed a development agency to improve existing housing in the area and to encourage home ownership.

With the help of city councilwoman Josephine DiRuzzo and state representatives Patrick Kennedy and Al Cardente, the Olneyville Housing Corporation was recently formed to meet these needs. Its attention is focused on a one-mile target area.

Mercer was appointed as executive director. She recruited architects, lawyers, business leaders and area residents to serve on the corporation's board.

Rhode Island College professor of anthropology/geography, Chester Smolski, is board president. "Chet provides the technical assistance to organize our strategy committees," says Mercer.

"It's a very sophisticated board—they are very committed to the cause," Mercer boasts.

Of Mercer, Smolski said he feels that Mercer is doing a very fine job as executive director of the corporation. "She's very enthusiastic and eager to put her training to use," he says.

Mercer and the board have set out to formulate a strategy to revitalize the neglected neighborhood. They want to establish a sense of community in the area by encouraging home ownership.

"Olneyville was once a bustling mill town and can be a very positive place to live," Mercer asserts.

According to Mercer, a good and functional society is one that can house its people in a safe and comfortable environment. She believes that other problems such as illiteracy and substance abuse can only be addressed once adequate housing is in place.

The Housing Corporation has plans to build three homes on a vacant lot on Putnam Street for owners to purchase reasonably. The homes are not being built for profit. Rhode Island Mortgage and Finance Corporation (RIMFC) is providing financing for construction. Groundbreaking is expected at the end of the year, according to Mercer.

Mercer says that support has been great and residents have been cooperative. "Without the corporation, area residents accepted that they were going to be paying rent for housing that was neglected by landlords living elsewhere. Now, home ownership is becoming more and more of a reality," says Mercer.

Mercer received her BA in Urban Studies, a program directed by Smolski. She said she chose this field because she was very interested in "societies and their political and economic environment."

She said she learned a great deal about planning and public policy in her classes. As an intern at the Rhode Island Public Transit Authority (RIPTA), Mercer experienced first-hand the problems of transportation planning on a state-wide level.

"The experience at RIPTA helped me to narrow down my own career path before graduating," Mercer remembers.



Maureen Mercer, executive director of Olneyville Housing Corporation. (What's News Photo by Paul Spaneni).

She valued her intern experience so much that she has taken advantage of the program at Rhode Island College to give another student the opportunity to gain "excellent experience."

Senior communication/management major Steve Thornton has started working with Mercer this semester to market the services of the housing corporation and to aid in the development of a business plan for the upcoming year.

"A co-op experience is great—it certainly enlightens the student to the realities of the working world," Mercer maintains.

Mercer chose to further her education and to focus on urban systems at the University of Glasgow in Scotland. "I wanted the experience of living in a foreign country where planning is much more popular than in the United States," she says.

Two years later, Mercer received a Master of Philosophy in town planning, specializing in regional economics.

She remained in Scotland to pursue doctoral research at the Center for Housing Research, one of Britain's leading urban "think-tanks." Her preliminary research concentrated on single women's housing issues.

In January, 1987, after exhausting funds to carry out her research, Mercer returned to the United States to gain some practical experience.

Mercer is also a board member for Alias Stage, a professional theatre group in Olneyville and secretary of the Olneyville Businessmen's Association.

Although the Olneyville Housing Corporation is in its infancy, Mercer hopes it will become a vital part of a productive community in the near future. "The corporation will serve as sort of a 'watchdog' to prevent Olneyville from further decay," she hopes.

Dance Alliance honors Fannie Melcer, former dance director at College for 18 years

by George LaTour

Fannie Melcer—a name that is virtually synonymous with that of the Rhode Island College Dance Company—was honored by Dance Alliance, Inc. on Sept. 24 when she was presented the Alliance's second annual Recognition Award.

At the Sunday afternoon reception in the Faculty Center honoring Melcer, now 74, the Dance Alliance cited Melcer's long and distinguished career in the field of modern dance.

The award was established to honor persons who have dedicated their time and talents to the betterment of the dance community.

A resident of North Providence, Melcer, an early proponent of modern dance in this state, took over as artistic director of the College dance company in 1960 and served in that capacity for the next 18 years.

Noting that Melcer's mission upon her arrival at Rhode Island College was "to develop a major in health and physical education" (her credentials included a master's degree in dance and an Ed.D. in administration and supervision from New York University), the Alliance observed that Melcer was "one of the first women in this country to chair a college department of health and physical education."

"Dr. Melcer established the country's earliest program for preparing elementary school teachers in that field."

"Her special expertise in modern dance prompted her to create a minor in dance for health and physical education majors.

"The newly created National Endowment for the Arts recognized Dr. Melcer's accomplishments by inviting her to represent Dance in Education at its first meeting," noted the Alliance.

The Rhode Island College Dance Company, which observed its 30th anniversary season this year, was founded as a dance club by Billie Ann Burrill, who also was responsible for recommending Melcer to the College.

Melcer currently serves as "a valuable member" of the advisory board of the Dance Alliance's Chance to Dance program, which gives school-aged children the opportunity to participate in a weekly dance program, and maintains an avid interest in photography.

A photo display of dance covering Melcer's years at the College was exhibited at her awards reception.

Her photography has enabled the Alliance to document its programs and special events.

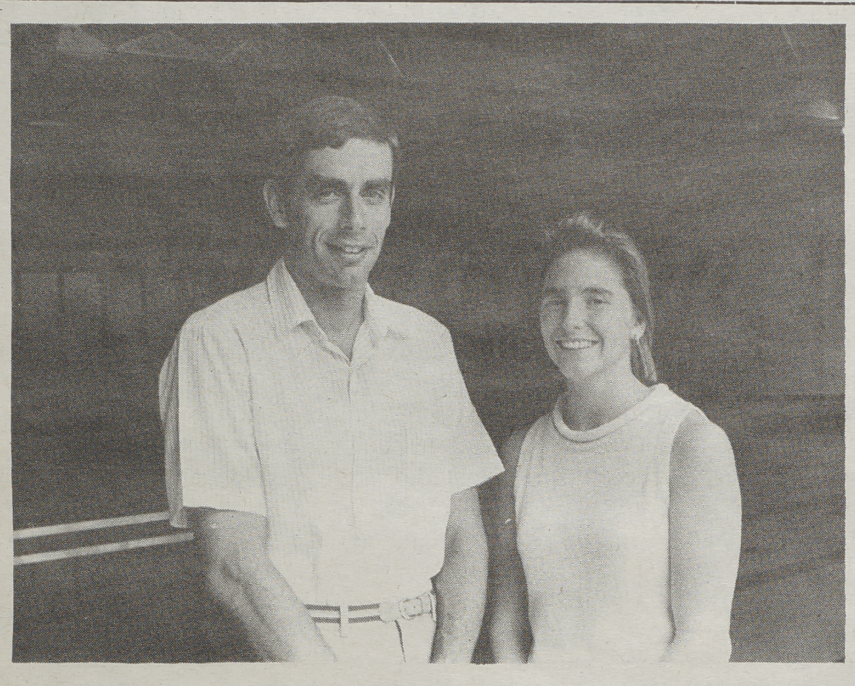
Donations in honor of Melcer may be made to the Dance Alliance, Inc. Scholarship Fund, which enables talented and financially needy students to pursue and broaden their dance studies.

For further information regarding this fund call 884-3999 or 828-5957.



FANNIE MELCER: Recognized for having dedicated her time and talents to the betterment of the dance community. (What's News Photo by Gordon E. Rowley)

Fitness, fun and friendship offered at new recreation facility

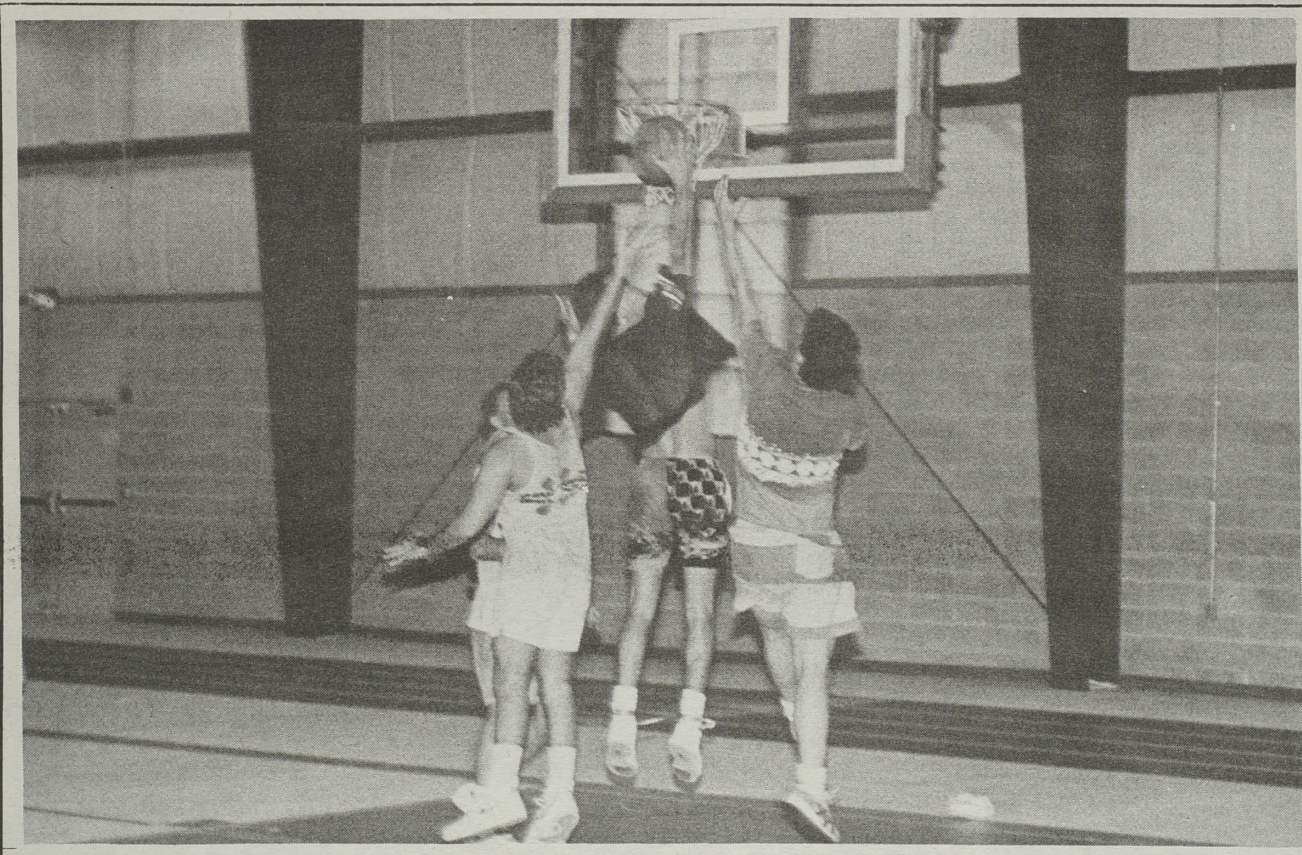


ALAN SALEMI AND JODI FRANK, recently appointed director and assistant director of aquatics at the new Rhode Island College Recreation Center. Salemi: 'I look forward to using my background and experience...to implement a broad range of programs for the entire College community.' Frank: 'The new Recreation Center promises to be a challenging experience...(for) staff development and programs.'

What's News Photos
by
George LaTour



NOW THAT LOOKS INTERESTING TO ME says Tim Pelletier, a junior, looking over some brochures of the programs and facilities offered at the Recreation Center. With him are Michele Mallozzi (center) and Jamie Petrocchi, both sophomores.



PICK-UP GAME OF BASKETBALL may be the first ever to be played at the Rhode Island College Recreation Center.

New Rec Center—'Quite a place!'

The Rhode Island College community, which had eagerly awaited the opening of the much-touted new multi-million dollar recreation center, wasn't disappointed at the center's "get acquainted" opening Sept. 20.

"This is quite a place!" one student was heard to say as she scanned the massive, sparkling clean and brightly colored interior. A festive atmosphere existed, thanks to the exuberant smiles of the student staff and dozens of colored balloons and welcoming floral bouquets.

Hundreds of students, faculty, staff and alumni converged on the impressive building from 1 to 7 p.m. They met the staff, asked questions and generally looked around...at the large in-door swimming pool, the running track, basketball courts, saunas, steam rooms, locker rooms and offices.

"First class!" said a graduate student who was preparing to enter the sauna. He was responding to a question as to what he thought of the center.

After repeated delays in construction, the project is now in Phase II which calls for renovations in the existing Children's Recreation Center building, connecting it to the Recreation Center.

A weight room, an aerobics/dance studio, additional locker rooms, exercising/stretching rooms, as well as some offices will be created in this second building, says John S. Foley, center director.

All of that should be done within the year, so that by next September, the whole \$4.5 million project will be completed, says Foley.

The whole building is accessible to the handicapped, from the front desk, to the hydraulic-powered chair which will help them enter the pool, to the lane on the track set aside for their use.

Also housed in the Recreation Center is a complete athletic training suite, including examining tables, whirlpools and exercycles. This will not only benefit the student athlete, but the student athletic trainer as well, notes Foley.

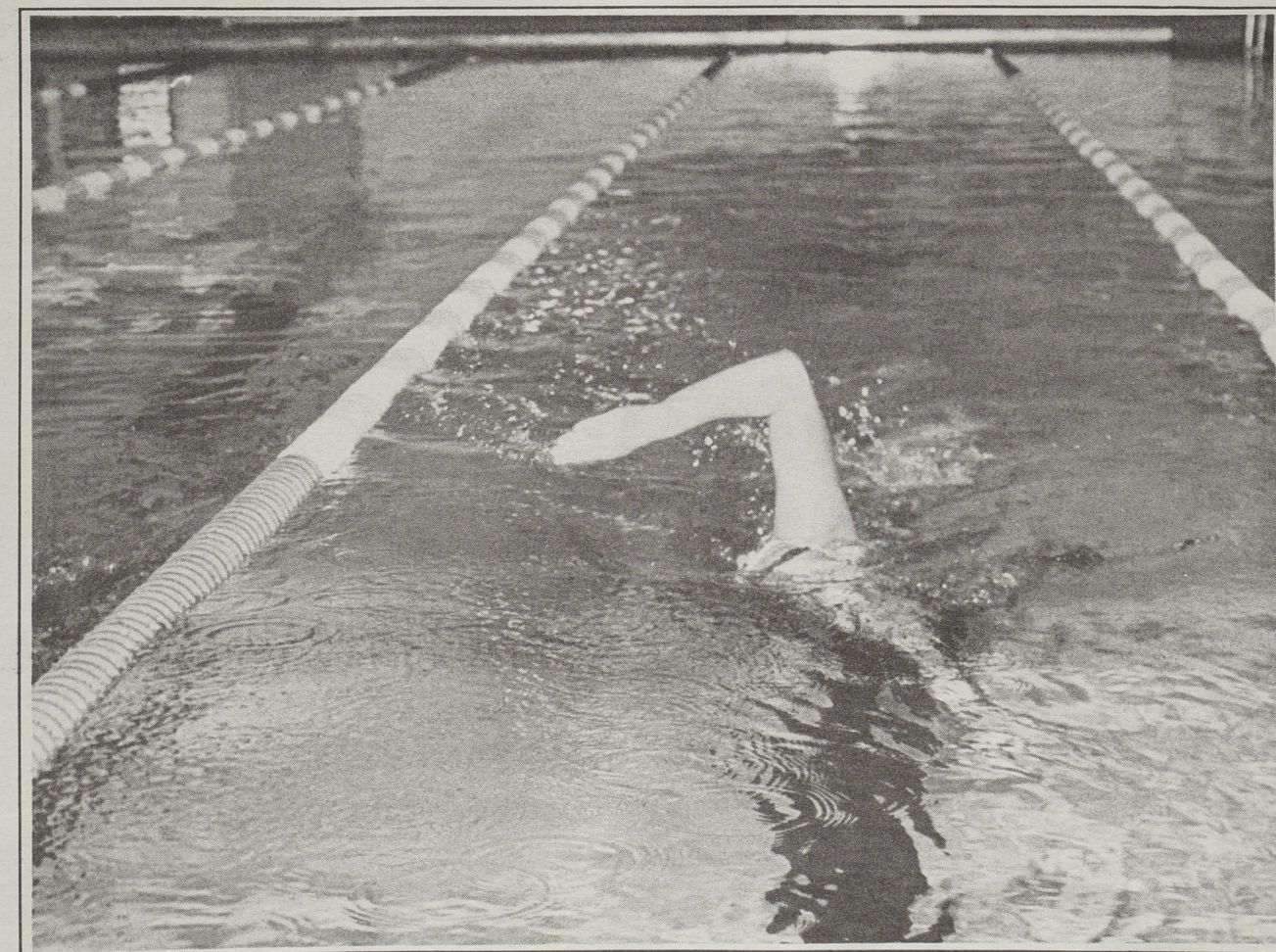
Adjacent to the training room, Foley hopes to create a cardiovascular area where members can be examined and advised of their athletic limitations. Some 13 Cybex Exercise weight-training stations will be located in the field house.

Since the center will be supported by user fees, all students are automatically charged a recreation fee and, hence, have complete access to the facilities. Full-time students pay \$40 a semester, or \$110 for the entire year, including summer. Part-time students are charged \$3 a semester hour.

Faculty, staff, alumni and residents of the neighboring community are invited to join for a fee as well. Members will be allowed to invite guests, take advantage of the center's towel service and, for an extra fee, be able to rent lockers.

"We have waited for this for a long, long time," says Foley, who assures the center will offer many new and exciting opportunities for its members.

The regular fall semester hours of operation are Monday-Thursday, 8 a.m. to 9:30 p.m.; Friday, 8 a.m.-4:30 p.m.; Saturday and Sunday, noon-5 p.m.



TAKING HER LAPS in the pool is Sandy Nordstrom, a junior from Blackstone, Mass.

★ HALL OF FAME

O'Grady: In 1987 he was given a special award for lifetime achievement by the College alumni association which cited him as "the father of athletics at Rhode Island College."

The alumni association noted his 50 years in service to others—as a teacher, scoutmaster and coaching legend," one who, as the College's first athletic director, "brought basketball up to true collegiate level." He had also served for eight years as director of physical education.

After Rhode Island College, O'Grady, who now resides in Glendale, Ariz., went on to be an outstanding coach in several sports at LaSalle Academy in Providence and at Danbury High School in Connecticut.

Sullivan: Based on his scoring records, he was the "most prolific scorer in RICE history," says his citation, which notes, "His individual game high of 32 points was quite an accomplishment in those days of basketball."

During World War II Sullivan played with the U.S. Army Air team in Naples, Italy. The team had a 54 win to 6 loss record.

After his semi-pro basketball days, school coaching and teaching, he served as a school principal for seven years and had the junior high school gym in Connecticut named after him.

Van Leesten: "It was the years that Mike played basketball that moved Rhode Island College into the known basketball world and provided the foundation for the basketball program that the College has today," notes his citation.

When asked about "any special achievements or stories" that would support his nomination to the Hall of Fame, Van Leesten, of Providence, replied that "In a big game against Danbury State, I scored the winning basket at the buzzer with a shot that slipped out of my hand!"

He also relates the story of his tryout for the baseball team after which the baseball coach suggested he "stick to basketball."

(continued from page 1)

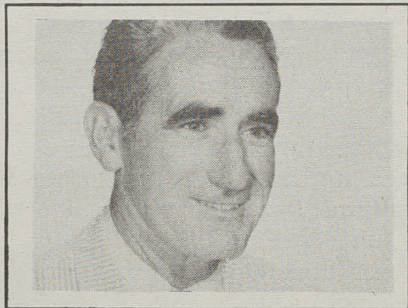
His career after college basketball, took him from founder and executive director of the Opportunities Industrialization Center (OIC) to presidency of his own firm. Along the way, he has been awarded three honorary doctorate degrees from Rhode Island institutions of higher learning.

Donaldson: His participation in sports at RICE from 1936-40 saw him as quarterback and captain of the College's only football team under coach Dan O'Grady, another of the Hall of Fame inductees.

Donaldson, now of Pawtucket, was an All-New England player in basketball, and later coached for nearly 20 years, 17 of them at Tolman High School. In 1977 he was coach of the "People to People" basketball All-Stars, who toured Ireland and Scotland.

Huelbig: He was chosen as an All-New England performer in basketball for the seasons 1968-69 and 1969-70. Now residing in Lincoln, Huelbig was also a baseball star here. He later coached Smithfield High School's basketball program for two years and presently operates his own business.

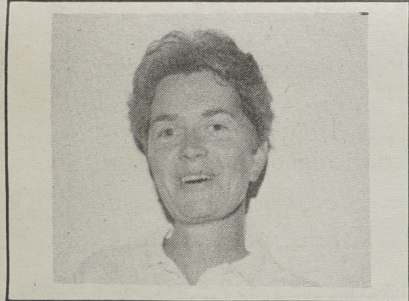
Wilson: Known locally as "the man of a million moves," he came here from Harold Taft High School in the Bronx in New York City. He was the first All-American basketball player in the College's history, a player "who was virtually unstoppable once he had the ball in his hands," notes his citation.



James Sullivan



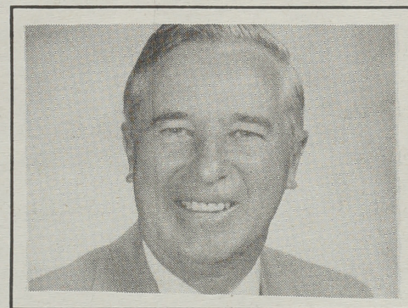
Michael Van Leesten



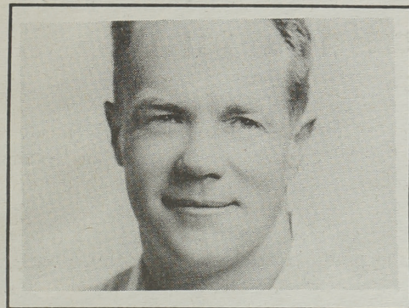
Linda Fisher Aitken



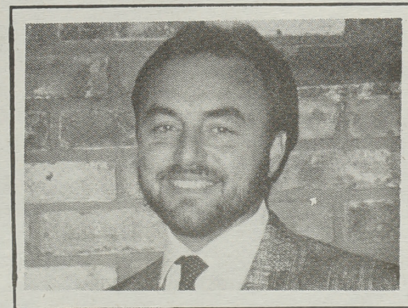
Cynthia DiSano



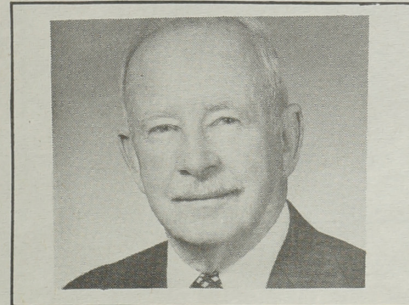
James Donaldson



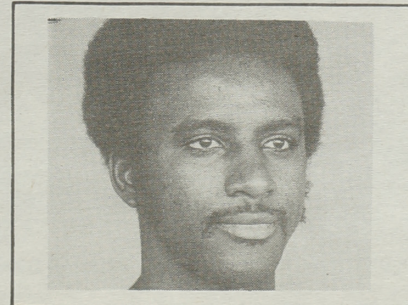
Edward Bogda



Raymond Huelbig



Daniel O'Grady



Rickie Wilson

History symposium to interpret French Revolution, past and present

After the American Declaration of Independence, revolution became an institution in Western society, according to historian Denis Brogan.

With that in mind, the annual history symposium on Thursday, Oct. 26, in Rhode Island College's Gage Hall auditorium will focus on the French Revolution, 1789.

Its focus will be not only the French Revolution from the perspective of political and social effects on 18th Century Europe, says Norman R. Pyle of Bristol, an associate professor of history here, but also on the Revolution from the standpoint of its global repercussions, e.g. how it would influence other revolutionary societies.

"It can be argued that the French Revolution—the bicentennial of which was observed this year—spawned 19th Century liberalism and future democratic societies, but, also, in terms of Robespierre's terrorism of 1793, that gave rise to modern ideological totalitarianism...Hitler's national socialism of 1933, for example," says Pyle.

"Did the antecedent American Revolution of 1776 differ from the French Revolution? Was the revolution that fostered the New Republic closer in its political conceptions and aims to the English 'Glorious Revolution' in 1688?" These are some of the questions the symposium will address in its efforts to interpret the French Revolution both past and present, says Pyle.

The symposium, which starts at 2 p.m., will feature three internationally known scholars: Prof. John Bosher, an economic historian of York University in Toronto who has written extensively on the French Revolution; Prof. Stephen Graubard of Brown University and long-time editor of *Daedalus*, the journal of the American Academy of Arts and Sciences; and Prof. John Lukacs of Chestnut Hill College, Philadelphia, who has been identified as one of the top 20 intellectuals in contemporary American society.

Moderator will be Prof. Kenneth F. Lewalski of the College history department.

The symposium is free and open to the public.

An econ student here may have achieved highest score in country

All nine Rhode Island College students who recently took the national Major Field Achievement Test in Economics scored above the national average, with one of them possibly having achieved the top score.

The highest score on the test nationally—taken by 668 economics majors—reportedly was between 66 and 70 which means the top score in the country "may have been (achieved by) one of our students," says Jeffrey P. Blais, coordinator of the economics group in the Department of Economics and Management.

One of the Rhode Island College economics majors scored 69, he reports.

The average score nationally was 31.1 percent. The average score for our students was 46.9 percent, he says.

The test was administered by the Educational Testing Service in Princeton, N.J.

Those taking the test from here last spring were enrolled in the economics senior seminar at the College.

"We have always felt that the content of our curriculum and the quality of instruction in our economics courses were very competitive nationally," says Blais.

"We have been very pleased with the caliber of the students who elect to major in economics. These results certainly reinforce our beliefs and are very encouraging," he says.

International Scene Programs Committee and International Education Program

Fall 1989

You and your friends are invited to a public series of lunchtime programs on contemporary developments in the Soviet Union and Eastern Europe. Bring your lunch. Light refreshments will be served.

The Soviet Union and Eastern Europe Today

Coordinated by Peter B. Brown (History Dept.), Rhode Island College

Thursday, October 5
12:30-2 p.m.
Language Dept. Lounge
Craig-Lee 102

"Are We Back to 1914 and 1939? Taking a Look at Ethnic Tension in the Soviet Union and Eastern Europe"
Dr. Peter Brown
Rhode Island College
Commentator: Dr. Herbert Winter
Rhode Island College

Thursday, October 12
12:30-2 p.m.
Language Dept. Lounge
Craig-Lee 102

"The Lessons of Poland and Hungary Today for the Soviet Union and the Rest of Eastern Europe"
Mr. Kazimierz Wierzbicki
Rhode Island College

Thursday, October 19
12:30-2 p.m.
Language Dept. Lounge
Craig-Lee 102

"What Does the Soviet Media Tell Us? How Open Is the Soviet Union?"
Dr. Samuel Kassow
Trinity College
Commentator: Mr. Brian Dickinson
Providence Journal Bulletin

Monday, October 23
12:30-2 p.m.
Language Dept. Lounge
Craig-Lee 102

"Lenin in Current Soviet Thinking"
Dr. Philip Pomper
Wesleyan University

Sponsored by the Office of the Provost and the Program of International Education. For further information, please contact Dr. Carolyn Fluehr-Lobban at (401) 456-8006 or Dr. Peter B. Brown at (401) 456-9720 or Dr. Amritjit Singh at (401) 456-8660. Next in the series (during the second half of the semester) will be a set of presentations on Southern Africa.

Photos of Arno Minkkinen on exhibit at Bannister Oct.5-26

For the past two decades Arno Rafael Minkkinen has explored the expressive possibilities of the nude in landscape, most often using himself as a model.

His photographs will be on exhibit in Rhode Island College's Bannister Gallery Oct. 5-26, with the exhibit opening from 7 to 9 p.m. on Oct. 5.

Minkkinen participates in the creation of his imagery as a protagonist, an Everyman, in a pursuit which fuses the experience of the body and the external world into a vision of the self.

His photographs have been exhibited and published worldwide.

A monograph of his work, titled "Frostbite," was published by Morgan & Morgan in 1978; a second book including his work, "New American Nudes,"

was published by MIT Press in 1981.

Minkkinen has lectured and taught at the University of Industrial Arts in his native city of Helsinki, Finland; the Massachusetts Institute of Technology, and the Philadelphia College of Art.

Currently, he teaches at the University of Lowell. He is represented by Galerie Viviane Esders of Paris, France.

The exhibit is free and open to the public.

Exhibit hours in the gallery, which is located in the Art Center, are Monday through Friday from 11 a.m. until 4 p.m. and Tuesday and Thursday evenings from 6 to 9.

For more information contact Dennis O'Malley at 456-8054.



Internationally known organist to give recital featuring R.I. College alum

Internationally known organist, composer, vocal coach and singer Jon Spong will perform an organ recital at the Mathewson Street United Methodist Church in Providence on Friday, Oct. 27, at 8 p.m., at which time he will present the Rhode Island premiere of *Triptych*.

Rhode Island College alumna Lori Phillips will be featured as soprano soloist in a program that will include *Organ Miniatures on 'He Leadeth Me'* composed for this occasion by Spong.

In addition, Spong, music director and organist of First Baptist Church of Philadelphia (founded 1698) and a faculty member of the Academy of Vocal Arts in that city, will give a master class in voice at Rhode Island College on Thursday, Oct. 26, from noon to 2 p.m. in Roberts Hall 138.

The class is for Rhode Island College music students only, but anyone may attend to watch and listen, according to Edward Markward of the music department, who will serve as narrator for Spong's "Scenes from the Life of Christ."



JON SPONG

Spong is a widely published composer/arranger and editor of organ music for church service use and has given many church organ dedicatory programs as well as recitals for national and regional conventions of the American Guild of Organists. He was organist for the inauguration of President Jimmy Carter.

Spong is celebrating his 25th anniversary season as accompanist for baritone Sherrill Milnes with whom he has performed in major music centers of the United States and Europe, including several times at the White House and on national television.

To perform Mozart sonatas on fortepiano, violin

Mary Sadovnikoff, one of the most active participants in what has been described as "The Fortepiano Revolution," will perform two Mozart sonatas on an 1804 Broadwood fortepiano from the Musical Instruments Collection of the Museum of Fine Arts in recital at Rhode Island College's Chamber Music Series Wednesday, Oct. 4.

Performing with her will be Scott Metcalfe on violin. They will perform Mozart sonatas for violin and piano.

The performance, free and open to the public, will be given in Roberts Hall 138 (recital room) at 1 p.m.

Sadovnikoff's initial performance on a Broadwood fortepiano in 1974 at the Museum of Fine Arts crystallized her interest in historically correct performance, and led to her specialization in the fortepiano.

Since then she has traveled with a fortepiano throughout the East Coast and

Midwest, and has performed on instruments in the collection of the Germanisches Nationalmuseum in Nurnberg; at Finchcocks, Kent, England, and in Bristol, England, as well as at the Boston Museum of Fine Arts.

Her programs have been broadcast by public radio stations in a number of states, including Rhode Island.

Sadovnikoff graduated from Radcliffe College and holds a Master of Fine Arts degree in composition from Brandeis.

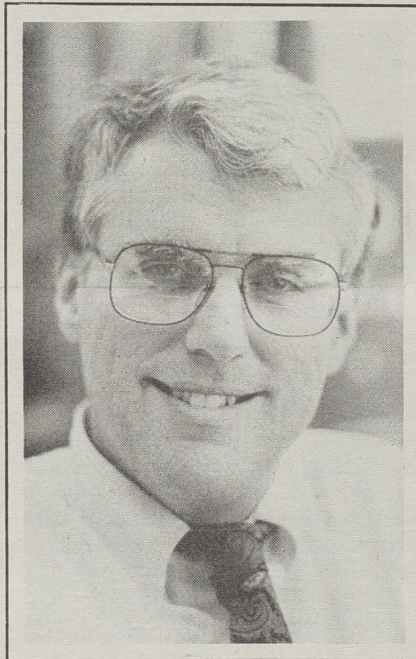
Metcalfe studied violin with Machie Oguri-Kudo and Daniel Stepner.

After graduating from Brown University with a degree in biology, he spent a year traveling and studying in Europe under a Samuel T. Arnold Fellowship from Brown.

Among his other musical activities, he regularly performs with the Tafelmusik in Toronto and serves as concertmaster at St. John's Church in Long Island.

For more information contact John Pellegrino at the College music department at 456-8244.

Comedian Richard Lewis will be appearing Wednesday, Oct. 4 in the Donovan Dining Center at 8 p.m. The performance is open to the public and tickets can be purchased at the information desk in the Student Union. A regular guest on the David Letterman show, Lewis is best known as a co-star in the hit comedy series "Anything But Love" with Jamie Lee Curtis. For more information concerning this and other upcoming events call 456-8539.



PROFS. ROBERT HOGAN AND HARRIET BRISSON have been appointed assistant dean of the Faculty of Arts and Sciences, a position they will share for the current academic year with the possibility of extension, according to Dean Richard Weiner, who reports that it was decided to subdivide and redefine the responsibilities of the post vacated by Catherine Flanagan. Hogan is from the English department; Brisson, the art department. Each will serve half-time while continuing to teach.

The Writing Center sponsors Halloween writing contest

The Writing Center is sponsoring a "It Was a Dark and Stormy Night..." Writing Contest. Meg Carroll, acting director of the center, welcomes Rhode Island College students to submit an essay detailing a horror story or poem, recounting a horrifying nightmare, or parodying a famous horror story, in three pages or less.

The top three entries will be published in the Writing Center's newsletter and the first place winner will receive \$50. All contestants will be invited to a Halloween party at the Writing Center on Oct. 31.

Students are asked to solicit a minimum donation of \$5 in sponsorship to participate in the contest. Applications will be accepted until Oct. 15. For more information or sponsor sheets, visit the Writing Center in Craig-Lee 225, Monday through Thursday from 9 a.m. to 7 p.m. and Friday from 9 a.m. to 4 p.m.

Carroll says that the center is offering coffee, tea and pastries every Tuesday from 9 to 11 a.m. as sort of an "open house" to introduce students to faculty members and to her staff of seven tutors. The tutors are made up of undergraduate and graduate students who offer advice, feedback or suggestions.

Carroll says that the center's services for writers are not just for writers "in trouble" or having difficulty, but for "writers across the board."

She said students should feel free to come in and "bounce around ideas" with the tutors or use the reference materials available. Appointments are preferred but walk-ins are accommodated. Even Saturday appointments are available, she says.

The center is now publishing a newsletter every three weeks. Writing contributions or observations on writing are welcome from faculty, staff and students.



MARY SADOVNIKOFF

Next issue of
What's News
is Monday,
Oct. 16.

DEADLINE

for copy, photos, etc.
is noon, Tuesday,
Oct. 10.

Acclaimed Ralph Lemon, Bebe Miller dancers kick off Performing Arts Series

by George LaTour

Two of the hottest names in the world of dance today, Ralph Lemon and Bebe Miller, will kick off the Rhode Island College Performing Arts Series this season with *An Evening of Dance* on Sunday, Oct. 15, in Roberts Hall auditorium at 8 p.m.

These innovative, young, New York-based choreographers, along with their companies, will present new works jointly commissioned by the New England Presenters, Jacob's Pillow and the New England Foundation for the Arts, says John Custer, series director.

Called "the contemporary dance world's mythmaker" by the *New York Times*, Lemon founded his company in 1985.

Since then, Ralph Lemon Company has performed in five countries with the American Dance Festival, Spoleto Festival USA, Jacob's Pillow Dance Festival, Dance Theatre Workshop and the Joyce Theatre in New York.

Lemon's company will perform his new dance, tentatively titled "Carnival." The piece offers an intimate glimpse of "lives of masked performers in their greatest roles...offstage."

Lemon has been a recipient of the American Choreographers Award for his work.

Bebe Miller, who earned a 1989 Guggenheim Fellowship for her outstanding choreographic achievements, has toured with her company throughout the United States and Europe.

She has also received two "Bessie" New York Dance achievement awards, one of which she shares with Lemon for their collaboration on the dance "Two."

Miller—hom *The Village Voice* says



AN EVENING OF DANCE with Bebe Miller and Company and Ralph Lemon Company Sunday, Oct. 15, Roberts auditorium, 8 p.m.

"has become brilliant at making dancing that has the feel of living"—founded her own company in 1984 after six years of dancing with the Nina Weiner Dance Company.

Her company will perform a new piece tentatively called "Allies." As with much of her past work, the dance concerns human relationships and "choices we make in directing our lives."

The two choreographers have been brought together in a tour sponsored by the 1989-90 Dance Initiative of the New England Foundation for the Arts. Additional funding for the performance here is

being provided by the Rhode Island State Council on the Arts.

All seating is reserved.

General admission tickets are \$13.

Senior and student discounts are available upon request. Tickets for Rhode Island College students are \$3.50. Group rates for 15 or more people are also available.

Roberts Hall box office opens for the *Evening of Dance* performance on Monday, Oct. 9.

For ticket or other information call the Performing Arts Series office at 456-8194.

R.I. Arts Advocacy Day to be held Oct. 15th

A special Arts Advocacy Day will be held on the Rhode Island College campus in conjunction with the Performing Arts Series presentation of the Ralph Lemon and Bebe Miller dance performance Sunday, Oct. 15.

"There has been a lot of debate in recent months about the use of taxpayers' dollars to fund arts activities," says Iona Dobbins, executive director of the Rhode Island State Council on the Arts.

"We would like to take this opportunity to invite Rhode Islanders to find out more about how these funds are used by attending."

"Because of the importance of this issue to the non-profit arts organizations in Rhode Island, various arts organizations from across the state will be distributing information at the event that highlights their numerous activities."

"Representatives of the Arts Council, the Rhode Island Arts Advocates and other arts groups will be on hand to answer questions," she says.

Gov. DiPrete has been asked to issue a proclamation on support of the arts.

The performance at 8 o'clock in the evening in Roberts Hall auditorium, entitled "An Evening of Dance," will premiere works commissioned through the 1989-90 Dance Initiative by the New England Foundation for the Arts.

Founded in 1976 as a consortium of the six New England state arts agencies, the foundation receives funding from the Rhode Island State Council on the Arts and the other member agencies, the National Endowment for the Arts, and private sources.

The arts council is urging attendance at this opening performance of the College's Performing Arts Series to "see how the arts enhance all our lives."

Calendar of Events Oct. 2-Oct. 16

Monday, Oct. 2

Noon—Roman Catholic Mass. Student Union 304.

Noon to 12:45 p.m.—*Food for Thought* series to continue with a presentation by Kay Gallagher of Health Promotion entitled "Lunch N' Learn." Student Union 306.

8:30 p.m.—*Comedy Cafe*. Top New England comedians will be featured. Hosted by Ed DelGrande. Coffee Ground, Student Union. Free.

Tuesday, Oct. 3

3 p.m.—*Women's Tennis*. Rhode Island College vs. Southeastern Massachusetts University. Home.

3:30 p.m.—*Men's Soccer*. Rhode Island College vs. Salve Regina College. Away.

9 p.m.—*New Music Night* to feature the band Paul's Planet in a performance of progressive rock. Coffee Ground, Student Union. Admission is free.

Wednesday, Oct. 4

Noon—Roman Catholic Mass. Student Union 304.

12:15 to 1:45 p.m.—*Noontime Series*. Folk guitarist Aubrey Atwater will be the featured performer. Donovan Dining Center.

1 p.m.—*Amnesty International* organizational meeting. Student Union 305. New members are welcome.

1 p.m.—*Chamber Music Series*. Mary Sadovnikoff to perform two Mozart sonatas on fortepiano. Scott Metcalfe will perform with her on violin. Roberts Hall 138.

8 p.m.—*Comedian Richard Lewis* to perform in Donovan Dining Center. Lewis costars with Jamie Lee Curtis on the popular ABC sitcom "Anything But Love" and is a frequent guest on "Latenight with David Letterman." Admission is \$8 for Rhode Island College students with ID and \$12 for the general public.

Thursday-Saturday, Oct. 5-7

8 p.m.—*Rhode Island College Theater* to present "To Gillian on Her 37th Birthday," Michael Brady's charming and

moving play about reaffirming the power of love. Roberts Auditorium. There will be a Sunday matinee at 2 p.m. on Oct. 8. Tickets are \$5.50 with discounts for students and senior citizens. For more information call 456-8060. All seating is reserved.

Thursday, Oct. 5

Noon—*Communion Service*. Student Union 304.

12:30 to 2 p.m.—*International Scene Series* on "The Soviet Union and Eastern Europe Today" to continue with a presentation by Dr. Peter Brown of the College's history department entitled "Are We Back to 1914 and 1939? Taking a Look at Ethnic Tension in the Soviet Union and Eastern Europe." Craig-Lee 102.

7 p.m.—*Women's Volleyball*. Rhode Island College vs. U.S. Coast Guard Academy. Away.

7 to 9 p.m.—*Arno Rafael Minkinen/Photographs* to open at Bannister Gallery, Art Center. (For details, see story in this issue.)

Saturday, Oct. 7

10 a.m.—*Women's Volleyball*. Rhode Island College with University of Massachusetts-Boston, Roger Williams College, and Bridgewater State College at the Rhode Island College Invitational.

11 a.m.—*Men's Cross Country*. Rhode Island College at the Tri-State Championships at Bryant College.

Noon—*Women's Cross Country*. Rhode Island College at the Tri-State Championships at Bryant College.

1 p.m.—*Men's Soccer*. Rhode Island College vs. Massachusetts Maritime Academy. Home.

1 p.m.—*Women's Tennis*. Rhode Island College vs. Southern Connecticut State University. Home.

Sunday, Oct. 8

TBA—*Women's Tennis*. Rhode Island College at the Salve Regina Invitational Doubles Tournament. Newport Casino.

7 p.m.—*Roman Catholic Mass*. Browne Hall, upper lounge.

Tuesday, Oct. 10

3:30 p.m.—*Men's Soccer*. Rhode Island College vs. Wentworth Institute of Technology. Home.

Wednesday, Oct. 11

Noon—*Roman Catholic Mass*. Student Union 304.

12:15 to 1:45 p.m.—*Noontime Series* to feature pianist Alex Tomasso. Donovan Dining Center.

1:30 p.m.—*Center for Industrial Technology Opening*. A luncheon, greetings, ribbon cutting, and open tours of the multimillion dollar Center are scheduled. Governor Edward D. DiPrete and other state and educational dignitaries will be present. Refreshments and open house tours will begin at 3 p.m. Whipple Hall.

Thursday, Oct. 12

Noon—*Communion Service*. Student Union 304.

12:30 to 2 p.m.—*International Scene Series*. "The Lessons of Poland and Hungary Today for the Soviet Union and the Rest of Eastern Europe," will be the topic of discussion. Speaker will be Kazimierz, Wierzybycki, an instructor in the College's history department. Craig-Lee 102.

3 p.m.—*Women's Tennis*. Rhode Island College vs. Bryant College. Away.

3:30 p.m.—*Men's Soccer*. Rhode Island College vs. Bridgewater State College. Away.

8 p.m.—*Sheila's Dance Party*, a benefit dance concert for leukemia victim and local dance fashion designer Sheila Duch Maneca, to be presented in Roberts Auditorium. Seven Rhode Island dance companies, including the Rhode Island College Dance Company, are scheduled to perform. A reception in the Faculty Center will follow the concert. Tickets are \$15 for both the concert and reception (\$12 for students) and \$10 for the concert (\$7 for students). They may be purchased

at the Roberts Auditorium Box Office. For more information, contact Dante DelGiudice at 456-9791 or 456-8046.

Friday, Oct. 13

6 p.m.—*Women's Volleyball*. Rhode Island College at the Eastern Connecticut State University tournament.

Saturday, Oct. 14

9 a.m.—*Women's Volleyball*. Rhode Island College at the Eastern Connecticut State University tournament.

11 a.m.—*Women's Cross Country*. Rhode Island College at the Little East Championships at Southeastern Massachusetts University.

Noon—*Men's Cross Country*. Rhode Island College at the Little East Championships at Southeastern Massachusetts University.

1 p.m.—*Women's Tennis*. Rhode Island College vs. Simmons College. Away.

Sunday, Oct. 15

11:45 a.m. to 12:45 p.m.—*Sunday Brunch Series* to feature keyboardist Juliet Davis. Donovan Dining Center.

1 p.m.—*Men's Soccer*. Rhode Island College vs. Plymouth State College. Away.

7 p.m.—*Roman Catholic Mass*. Browne Hall, upper lounge.

8 p.m.—*Performing Arts Series* to open with the Bebe Miller and Ralph Lemon dance companies in *An Evening of Dance*. Roberts Auditorium. (For details, see story in this issue.)

Monday, Oct. 16

Noon—*Roman Catholic Mass*. Student Union 304.

Noon to 12:45 p.m.—*Food for Thought* series. Topic of the next presentation in the series will be "Academic Advisement Follow Up" for freshmen. Speaker will be Dolores Passarelli, Academic Advisement Information Center. Student Union 306.

8:30 p.m.—*Comedy Cafe*. Top New England comedians will be featured. Hosted by Ed DelGrande. Coffee Ground, Student Union. Free.