



WHAT'S NEWS

AT RHODE ISLAND COLLEGE

Vol. 10, No. 10 February 5, 1990

Mr. Olsen

Latin America by bus; senior has 'experience of my life'

by George LaTour

She is a picture of poise, sitting comfortably in an office arm chair while answering questions in a relaxed confident manner.

Her dress is professional—neat, conservative.

One could not help but notice her striking silver earrings with the jet black stone in the center. The stone matches the color of her long hair.

The earrings are Mexican; the stone, an obsidian, once sacred to the Aztecs.

It is difficult now to picture Rhode Island College senior Patricia (Paty) C. Bergantini of Providence riding for days on a bus through Central America, visiting refugee camps in Mexico, talking in Spanish with Mothers of the Disappeared in Guatemala and picking coffee beans with Nicaraguan volunteers.

Just what she did

But, that is just what this native Rhode Islander did for a five-month period which began in November of 1988.

(continued on page 6)

New digs for wigs...



ANOTHER SEASON, ANOTHER REASON to make a move for the RIC costume shop—all 40,000 pieces. Above are Barbara Matheson, costume designer, and student assistant Loretta Feole.

Performing Arts Series

Merce Cunningham Dance Co. to offer 'the experience of dance' to audience at RIC

by George LaTour

"With the death of George Balanchine," wrote Dale Harris in the *Wall Street Journal* in March 1985, "it has become very clear that Merce Cunningham now stands alone as the dominant artistic force in American dance."

World-renowned choreographer Merce Cunningham will bring his dance company to the Performing Arts Series stage in Roberts Hall auditorium at Rhode Island College on Thursday, Feb. 22, for a one-time, reservations-only performance, which he promises will be "not so much an evening of dances as the experience of dance."

Starting at 8 p.m. and presented without intermission, this "event" will consist of complete dances, excerpts of dances from the repertory of the company, and, perhaps, new sequences arranged for the RIC performance... "with the possibility of several separate activities happening at the same time."

Maverick of modern dance

Cunningham was called "the maverick of modern dance" in 1982 by *The New York Times Magazine*. Now 70, he still performs on stage as he is expected to do at RIC.

The *Wall Street Journal's* Harris reported in 1987 in an article entitled "Getting Older—and Better," that Cunningham "remains a formidable stage personality."

(continued on page 6)



FIVE STONE WIND is performed by the Merce Cunningham Dance Company which will take the stage in the Performing Arts Series at Rhode Island College Feb. 22 at 8 p.m.

Focus on the Faculty and Staff

Elizabeth Acheson of Westport, Mass., has been appointed assistant professor in the Department of Elementary Education. She will teach the introductory education course, possibly some methods courses, and supervise student teachers within the teacher education program in elementary education. Acheson was formerly a lecturer at Southeastern Massachusetts University, Department of Education.

Bande A. Thomas of Providence, has been appointed assistant professor in the Department of History. He will teach courses in the area of African/African-American history and English history. Thomas was formerly an instructor at Houston Community College.

Furhana A. Bhoola of Cranston, has been appointed assistant professor in the Department of Anthropology/Geography. She will teach the non-western experience at the undergraduate level. Bhoola was formerly a project consultant at Creative Associates International in Washington, D.C.

Mary V. Cabral of Bristol and **Lori A. Wells** of Portsmouth, have been appointed maternal and child health coordinators in the Department of Special Education. They will implement a systematic screening process for infants and toddlers to identify unmet health, educational and social service needs and oversee community based, inter-agency service teams. Cabral formerly worked with the Visiting Nurses Association. Wells formerly worked with the East Bay Visiting Nurses Association.

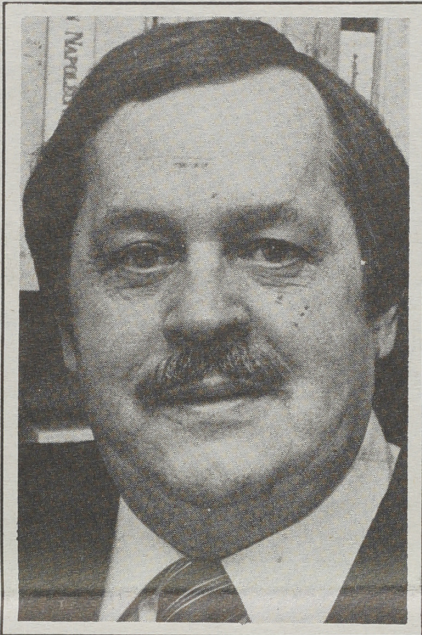
Warwick resident, **Judith A. Babcock**, associate professor of management and assistant chair of the department of economics and management, has been appointed to the editorial board of the *Journal of Management Systems*. The journal is a quarterly, refereed, multidisciplinary management publication of the Association of Management. It publishes empirical, theoretical and methodological articles as well as critical, book and software reviews in human resources management, management information systems, organizational behavior and closely related fields.

Judith Lynn Stillman, of Providence, artist-in-residence and associate professor of music, performed throughout Israel as guest artist with the Jerusalem String Trio, as soloist, and in recital with Yossi Arnhem, associate principal flut-

tist of the Israel Philharmonic Orchestra. Stillman was presented at Vix Auditorium, the Weizman Institute of Science, the Neve Tzedek Chamber Music Festival sponsored by the Tel-Aviv/Jaffa Municipality, the Kibbutz Dorot Artists Series, Yuval Concerts, and live broadcasts on Kol-Ha-Musica Radio, Israel Broadcasting Authority.

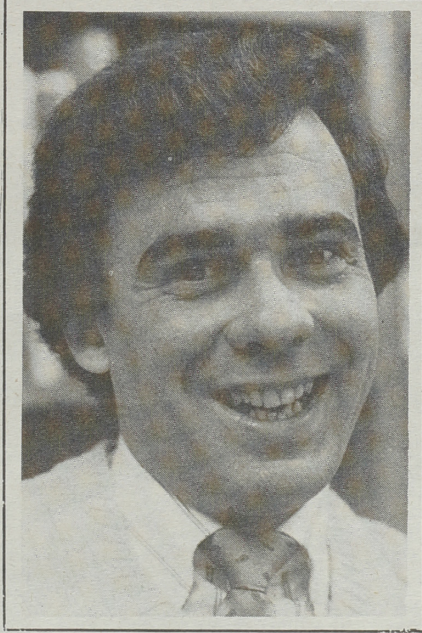
Providence resident **Kenneth F. Lewalski**, professor of history, will deliver a lecture entitled "The Cabaret in Poland: 1900 to the Present" at the Pawtucket Public Library on Sunday, Feb. 18 at 1 p.m. Lewalski will discuss the social, aesthetic and political uses of cabaret satire and entertainment. The lecture will be accompanied by musical illustrations and slides.

Lewalski also gave a recent illustrated lecture on "The Capitols of Eastern Europe: Warsaw" at the Highland Court Community Lecture Series on Jan. 17.



KEN LEWALSKI

Hector Medina, of North Providence, assistant professor of modern languages, recently co-authored a book with Phoebe Ann Porter, titled *Exploraciones Imaginativas: Quince Cuentos Hispanoamericanos*. The book is an anthology of Spanish-American short stories for use in intermediate Spanish courses. Medina is presently on leave.



HECTOR MEDINA

Excuse us, Mom!

The feature article "Kids and Computer Keyboards—A Natural!" in the last issue of *What's News* failed to mention Phil Leonelli's mother, Yolanda Leonelli of Providence, with whom he was staying during his Christmas visit here from California.

Yolanda was a registered nurse with the Rhode Island College Health Services for 17 years prior to her retirement.

Research and Grants Administration: Request for proposals

The Office of Research and Grants Administration will be providing information to faculty and staff about requests for proposals (RFPs) on a regular basis in this column. Faculty and staff interested in obtaining further information or applications and guidelines need only circle the number of the RFP on the coupon below and send it to the office in Roberts 312.

1. American Philosophical Society: General Research Grant Program. Awards support basic research in all fields of learning by those holding a doctoral degree or the equivalent. Grants are intended to help defray research costs such as travel and the collection and preparation of materials. Maximum award levels range from \$3,000 to \$4,000. Program has February 1, April 1, Aug. 1, Oct. 1 and Dec. 1 deadlines. NEXT DEADLINE: April 1.

2. Economic History Association: Arthur H. Cole Grants-in-Aid. Provides supplemental support to individuals conducting research in economic history. Preference is given to recent recipients of the Ph.D. to assist them with publication of their dissertations or monographs; however, all levels of scholars may apply. Maximum award is \$1,200. DEADLINE: April 1.

3. National Endowment for the Humanities: Higher Education in the Humanities. Supports institutes, workshops, conferences, course development and other types of faculty study programs that focus on the reinvigoration of teaching in the humanities. Cooperative efforts among faculty and administrators within a single institution or among a group of institutions are particularly encouraged. DEADLINE: April 1.

4. National Endowment for the Humanities: Summer Seminars for School Teachers-Directors. Summer seminars for teachers of grades K-12 are designed to provide an opportunity for intense study of significant texts; seminars are directed by faculty members. Seminar directors will design their own seminars, which must focus on intensive study of a limited number of major primary works in the humanities. Grants are awarded to the host institution to cover stipends for the director and participants as well as direct and indirect costs. Deadline cited is for seminars to be held in the summer of 1991. DEADLINE: April 1.

5. Health Resources and Services Administration: Nursing Special Projects. Awards grants to accredited nursing programs to improve nursing education through special projects that: provide continuing education for nurses; improve the education of nurses in geriatrics; increase the supply of trained nursing personnel in rural areas; promote the transition of paraprofessional nursing personnel toward professional nursing degrees; examine and demonstrate ways to recruit and retain professional nurses in various care and service settings. DEADLINE: April 1.

6. National Research Council: Resident Research Associateship Programs. Through agreements with many federal agencies, opportunities are available for recent Ph.D.'s and senior investigators to engage in basic and applied research at over 100 federal labs and research facilities. Stipends will support research in such areas as chemistry; earth and atmospheric sciences; engineering and applied sciences; biological, health, and behavioral sciences; biotechnology; math; space and planetary sciences; and physics. DEADLINE: April 15.

7. National Science Foundation: Informal Science Education Program. Supports projects that focus on personal interactive learning of science, mathematics, and technology outside the formal educational system. A variety of media are supported including broadcasting, museums, clubs, and other sources of direct science experience. Projects that are both cost effective and mutually reinforcing and that serve the needs of a wide spectrum of age groups and interests are encouraged. DEADLINE: April 1.

8. National Science Foundation: Studies and Program Assessment—Science and Math Education. Supports two data analysis and policy studies programs to strengthen science, mathematics, and engineering education in the U.S. The Studies and Analyses Program supports projects designed to provide data on national trends and needs, the effectiveness of education alternatives and other information that will assist the Foundation and other agencies in developing science and math education initiatives. The Assessment Program supports a number of appraisal activities designed to assist NSF in program planning. Deadline cited is a target date. DEADLINE: April 1.

9. National Science Foundation: Teacher Preparation Program. Supports the development and evaluation of innovative approaches and creative new materials for the preservice preparation of teachers in the areas of science, math, or technology education, and research on factors affecting the teacher preparation process. Projects should focus on national issues and the development of widely replicative models. Collaborations among scientists, science educators, teachers and other science-teaching experts are encouraged. Deadline cited is a target date. DEADLINE: April 15.

10. National Science Foundation: Undergraduate Curriculum and Course Development in Engineering, Mathematics and the Sciences. Supports projects to stimulate approaches and experiments to produce major changes in the U.S. undergraduate engineering, mathematics and science education. In FY 90, emphasis will be on strengthening introductory-level courses, curricula and laboratory programs as typified by the freshman and sophomore years. Proposals will be accepted for two categories: Comprehensive Development Projects and Prototype and Pilot Projects. DEADLINE: April 9.

Office of Research and Grants Administration

Please send me information on the following programs: (Circle programs of interest to you.)

1. 2. 3.

4. 5. 6.

7. 8. 9. 10.

Name: _____

Campus Address: _____

2/5/90*

Next issue of
What's News
is Monday,
Feb. 19.
DEADLINE
for copy, photos, etc. is
noon, Tuesday, Feb. 13.

EDITOR
Clare Flynn Joy

ASSOCIATE EDITOR
George LaTour

STAFF
Gordon E. Rowley, Photographer
Cynthia L. Sousa, Editorial Asst.
Ellen W. Hunt, Secretary

STUDENT STAFF
Jeff Fiedler, Writer
Christine Albanese, Calendar

What's News at Rhode Island College (USPS 681-650) is published biweekly throughout the academic year except during semester breaks by Rhode Island College Office of News and Publications Services, 600 Mt. Pleasant Avenue, Providence, RI 02908. Second-Class postage paid at Providence, RI.

Postmaster: Send address changes to What's News at Rhode Island College, Office of News and Publications Services, 600 Mt. Pleasant Avenue, Providence, RI 02908.

DEADLINE
Deadline for submission of copy and photos is noon the Tuesday before publication date.

TELEPHONE
(401) 456-8132

PRINTING
TCI Press

College Shorts

Counseling service on eating disorders

From contacts with students and feedback from other campus services, the Counseling Center staff have become concerned with students' struggles with eating problems at RIC.

They are offering an eight week program for students who think their eating and concern with body image have gotten out of control. This is not a weight control program but an opportunity to focus on the emotional function of food in their lives.

Please pass this info on to those who may benefit from a consultation. Contact the Counseling Center for an interview appointment. Strictly confidential. 456-8094.

RICSA election results

The results of the election for officers and staff of the Rhode Island College Staff Association have been announced.

Newly elected officers for terms ending October 1991 include: Gail Davis, president; Dolores Passarelli, vice president; Kathy Sasso, secretary; Tom Bradley, treasurer.

Executive Board members selected for terms ending October 1990 were: Brian Allen, Pat Kenny, at large; John Foley, Judy Gaines, Mark Paolucci, Student Affairs; Charles Allsworth, Linda Carter, Ed Markowski, Terri Riley, Academic

Noontime prayer services

During the second semester the chaplains will be conducting ecumenical noontime prayer services. The College community is invited to attend these services and to bring the needs and concerns of our community to these short noontime gatherings. Noontime Prayer will begin on Feb. 1 in Room 304 in the Student Union.

Discounts available on Mac's

The College has just signed an agreement that will allow full-time faculty and staff, and degree seeking students taking six credit hours to purchase Macintosh computers at significant discounts.

Make an appointment with Peter Harman at 456-8050 if you are interested in exploring this opportunity. You can also still purchase IBM and Zenith computers.

Volunteer Fair scheduled

The Campus Center will hold a "Volunteer Fair" Wednesday, Feb. 7, from 12:30 to 4 p.m. in the Student Union Ballroom. This is a great opportunity for students and staff alike to explore volunteer options! For more information call Kristen King at 456-8034.

Love

means...



With the 19 or more couples at Rhode Island College who are married and working on campus, the old cliché "LOVE IS IN THE AIR" just doesn't do us justice.

Perhaps LOVE is in the classroom....or office....or laboratory would actually be more correct.

In any case, those of us in the Office of News and Publications thought it might be fun to find out who you are—especially since Valentine's Day is nearly upon us and the "season of love" is just around the corner.

The three couples pictured here lovingly discussed their loves and their lives at the College.

Ken and Ruth McVay

Ruth and Ken McVay have been married for 37 years. In one way or another, both have been associated with the college since 1977.

"It's great working together," Ruth says. "Whenever our schedule permits, we drive to and from work."

The duo usually exchange cards on Valentine's Day. "Sometimes we'll go out to dinner."

Ruth is an administrative secretary in the School of Graduate Studies. Ken is an assistant professor of Industrial Technology.



Charlie and Pat Marzzacco

Patricia Marzzacco says that her husband of 25 years, Charlie and she try to "make every effort to separate their personal lives from their professional lives" and therefore try not to bring "the office home."

And in Pat's eyes, no one day need be set aside to recognize love in the Marzzacco home. "But we do exchange gifts."

Patricia is a recruitment coordinator in the Office of Admissions and Financial Aid. Charlie is a chemistry professor.

"We are fortunate to have a lot in common," says John Pellegrino who has been married to Alice for close to 28 years. "Our vacations and lives" are happily filled with music. The couple has been associated with the college for 25 years.

John said the two commonly exchange Valentine's Day cards and "I give Alice a gift."

Alice is an assistant professor at the Henry Barnard School. John is an associate professor of music.

John and Alice Pellegrino

147 nominees for president's position

The list of applicants and nominees for the president's position as of January 19 totals 147, according to a report from the Advisory Panel for Presidential Search.

Of the 147, 105 are active applicants, 8 have declined to become active candidates, and 34 have been nominated but had not yet responded to an invitation to submit a resume.

A final candidate should be chosen by mid-March and announced in the following weeks.

According to the report, the Advisory Panel and the Board of Governors feel that the available pool is quite healthy and has several strong candidates, including former and current presidents or chancellors, 55 vice presidents, vice chancellors or provosts and 23 women.

In November nominations were widely solicited from state and national leaders after the Board of Governors approved a statement of qualifications and criteria for the position based on recommendations from the Advisory Panel.

Files will be carefully reviewed by the Advisory Panel over the next few weeks. Then, a list of 12 to 15 candidates for further consideration and reference checks will be recommended to the Board.

The Board will then select six to eight of these candidates for off-campus interviews. Finalists will be chosen from this group and invited to visit Rhode Island College. The Board will choose a leading candidate from this group.

For more information, call Henry Nardone, (203) 441-8027 or Jeanne Darling, Office of Higher Education, (401) 277-2685.



CHANGING OF THE GUARD: Meradith McMunn (center), associate professor of English, will be in charge of the Office of International Education for three semesters, replacing Carolyn Fluehr-Lobban (left) who is on sabbatical leave. At right is McMunn's graduate assistant, Goedele Gulikers. McMunn's office is in Craig-Lee Hall 353, Ext. 8675.

European economic community is topic of spring International Scene Luncheon Seminars

Rhode Island College spring International Scene Luncheon Seminars will offer five entries — all on Thursdays — from Feb. 8 to March 8 on the general theme of "1992 and Beyond: Effects of the European Economic Community."

The first session, Feb. 8, is entitled "Conceptions and Misconceptions." George L. Pamental of Wickford, a member of the Department of Economics and Management, will describe some of the results of the economic union of the European community, and some of its implications.

Time and site of the sessions are: 12:30-2 p.m. in Alumni Lounge, Roberts Hall, except for the March 8 seminar which will be held in the History Department Lounge, Gaige Hall 207. The seminars are free and open to the public.

The remaining sessions are: **Feb. 15:** Trade and Investment: Peter W. Harman of North Kingstown, the director of the RIC Computer Center and an associate professor in the Economics and Management Department, will discuss the implications of a unified Europe on trade with the U.S. and with other nations of the world.

Feb. 22: Banking and Finance: James Thornblade, senior international economist for the Bank of Boston, will

discuss the implications of a unified Europe on the banking systems of the world. Additionally, the implications of a new currency will be explored, especially its impact on the dollar, the yen and existing European currencies.

March 1: Managerial Practices and Labor Relations: Atilla Dicle of Warwick, a member of the economics and management department, will discuss differences in managerial practices and labor relations within the EEC and compared to those in the U.S. and Japan.

March 8: Politics and Economics: A distinguished panel, comprised of Phillip Clendenning of Oriental Research Partners, a Boston research and consulting group; Ridgway Shinn of Johnston, professor emeritus of history, and Herb Winter of North Providence, professor of political science, will discuss the ramifications of a politically unified Europe, with special emphasis on relations with the U.S., Japan and the Soviet Bloc.

The seminars are being sponsored by the provost's office, the office of International Education and the program on the European economic community.

For more information, contact Professors Pamental at 456-8760 or Dicle at 456-9534.

Violinist John Sumerlin to perform in chamber series

Violinist John Sumerlin, the newest member of the Rhode Island College music faculty, will perform Beethoven's "Sonata, Opus 47 in A Major (Kreutzer)" and Wieniawski's "Polonaise Brillante, Opus 21 in A Major" in the Chamber Music Series here Wednesday, Feb. 21, at 1 p.m. in Roberts Hall 138 (recital room).

Judith Lynn Stillman, RIC's artist-in-residence, will accompany him on piano. The recital is free and open to the public.

Sumerlin's concert career began under the auspices of Young Concert Artists in Performance while he was at the Manhattan School in New York studying with Raphael Bronstein.

Later a student of Dorothy DeLay in New York and Cincinnati, he twice won the coveted Sterling Prize and a special career award from the Hertzberg Music Foundation.

A frequent recitalist in the United States, Canada and Europe, under the management of Artistry Associates International, Sumerlin also was founder and first violinist of the Harrington String Quartet, performing over 60 concerts yearly in the U.S. and Mexico.

His quartet became one of 10 chosen from world-wide auditions to compete in the first Banff International Quartet Competition in Canada.

Concurrent with his quartet's residency in Texas, Sumerlin was concertmaster of the Amarillo Symphony Orchestra, logging over 70 appearances as concerto soloist.

In addition to his concerto, recital and chamber music careers, Sumerlin also has held positions as first violinist with the American (Stokowski), the Dallas, Cincinnati and Honolulu symphony orchestras and the Santa Fe Opera.

For more information on the recital or the Chamber Music Series, call John Pellegrino of the RIC music department at 456-8244.

Physical Science Colloquium Schedule—Spring 1990

Physical Science Colloquium schedule for this spring follows below. All colloquia are on Wednesdays at 12:30 p.m. in Clarke Science 106 unless otherwise noted. All are free and open to the public.

Feb. 21: Multiphoton Induced Chemistry, Gary Siuzdak, a 1985 RIC graduate, now of the Dartmouth College Department of Chemistry.

Friday, Feb. 23: The Inside Story of Color Photography, Dr. James I. Edwards of the Eastman Kodak Co. Meeting of the Rhode Island section of the American Chemical Society. 8 p.m., Clarke Science 125 (reception at 5:15, dinner at 6 in the Faculty Center).

Feb. 28: NMR Spectroscopy of Living Tissue, Dr. Ronald Lawler, Brown University Department of Chemistry.

Saturday, March 3: New England Association of Chemistry Teachers meeting at RIC. Colorful Demonstrations on Kinetics and Equilibrium, Dr. Charles Marzzacco, 9:10 a.m., Clarke Science 128; Timm Award Lecture: Active Learning Using Interactive Technologies, Dr. James Fasching, University of Rhode Island, 10:30 a.m., Clarke Science 128.

March 7: Nuclear Spectroscopy and the Study of High Temperature Superconductors, Dr. Christoph Hohenemser, Clark University Department of Physics.

March 21: Bilirubin Structure Investigated by Spectroscopic and Computational Studies, Dr. Willem Leenstra, University of Vermont Department of Chemistry.

March 28: Spectroscopy using a Diode Laser, Dr. Barry Gilbert, RIC and Cambridge University (date tentative).

Students plan events, focus on 'Issue Awareness'

Members of the Rhode Island College Student Community Government have scheduled this semester's programs to focus on current issues facing the nation, according to Michael Connolly, president of group.

Among the issues selected by the students are AIDS, the homeless and disadvantaged, and world peace.

The following describes the activity, its date, time, and place:

American Pictures, Wednesday, Feb. 14, 7 p.m. in Gaige Auditorium - Danish photographer, Jacob Holdt, will present his photographic journey through the underworld of America's "rejected society." Music will accompany Holdt's per-

sonal narration of his adventures.

Hot, Sexy, and Safer, Wednesday, March 28, at 9 p.m. in the Coffee Ground - Comedienne, Suzanne Landolphi, presents an honest and open look at safe sex. Her development of the show was in a response to the issue of AIDS.

World Game, Wednesday, April 25 (place and time will be announced at a later date) In response to Earth Day 1990 celebration, the World Game is an interactive presentation of global issues including population, food distribution, arms and weapon control and other topics.

For further information, call Connolly at 456-8088.



Rhode Island College Foundation 25th Anniversary Gala Committee, (front, from left) Louis Marciano (co-chair), Holly Shadoian, Tullio DeRobbio (co-chair), Elena Leonelli; (standing in rear) Mary Juskalian, Renato Leonelli.

R.I. College Foundation celebrates its 25th anniversary

Gala evening set for April 20

On April 20, the Rhode Island College Foundation will celebrate its 25th anniversary. A gala evening will be held at the Johnson and Wales Airport Center in Warwick.

Co-chairs of the Silver Anniversary Committee, Louis A. Marciano and Tullio DeRobbio encourage members of the College community to attend since many have benefited directly by the generosity of the Foundation.

Recently, the Foundation granted a loan to the College to assist in completion of the Whipple Gymnasium renovations. A few years ago the Foundation purchased the Rhode Island Education building for the College.

Most recently, the Foundation is trying to help Ridgway Shinn put in to action the Study Abroad Fund. The recipient of the first award will be announced at the 25th anniversary event.

The Foundation began 25 years ago with a \$3,000 gift from the alumni association. Its assets now approach \$2 million, with all the dividends going back into programs at the College.

Tickets for the anniversary gala evening are \$25 and include pre-dinner rounds of cheese, a full course dinner with wine, dessert and coffee.

For tickets or more information contact the Office of Development at 456-8105.

January 1990 R. I. College Commencement

Nothing would have caused the 350 Rhode Island College January graduates to miss their big day.

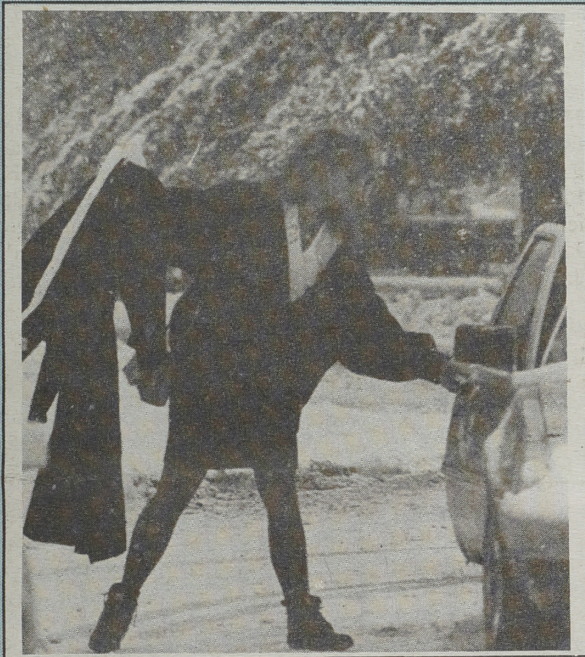
Not the ice cold temperatures that brought the state a heap of snow that day, creating hazardous driving and uneasy walking (especially in high heels) or the lack of childcare, or just about any other inconvenience.

In fact, as the graduates, their families and friends poured into Roberts Auditorium on Jan. 21 to begin the 2 p.m. commencement ceremonies, a certain warmth filled the room and problems disappeared for at least the next three hours.

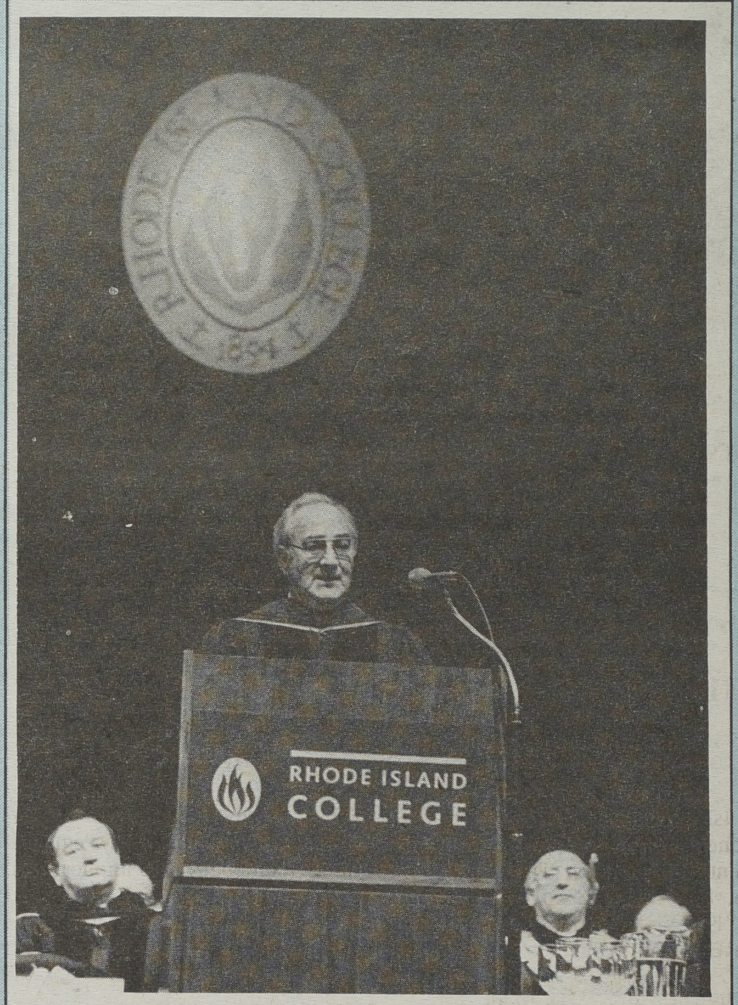
From the processional of graduates, faculty members, administrators, guests and honorary degree recipients marching to pomp and circumstance, to the singing of the National Anthem by M.A.T.-C. degree candidate, Renee L. Poirier, and invocation by College Chaplain Sister Mary Ann Rossi, C.N.D. and throughout the messages delivered by state officials and College dignitaries, an atmosphere of friendliness, cheer and excitement was the tone for this year's ceremonies.

The importance of education and its "rewards," the contributions "you can make to the world," and the need to help those reach "as high as you have," was the underlying theme of the greetings delivered by Gov. Edward D. DiPrete, Vice Chairman of the Board of Governors for Higher Education Henry J. Nardone, and keynote speaker, Americo W. Petrocelli, commissioner of higher education.

Honorary degrees were awarded to Peggy Boyd Sharpe of North Kingstown, a local environmentalist, and Anna J. Harrison, professor emerita in chemistry at Mount Holyoke College by acting president John Nazarian, who later conferred degrees on the graduates.



An unidentified graduate alights from a car with her gown in front of Roberts Hall.



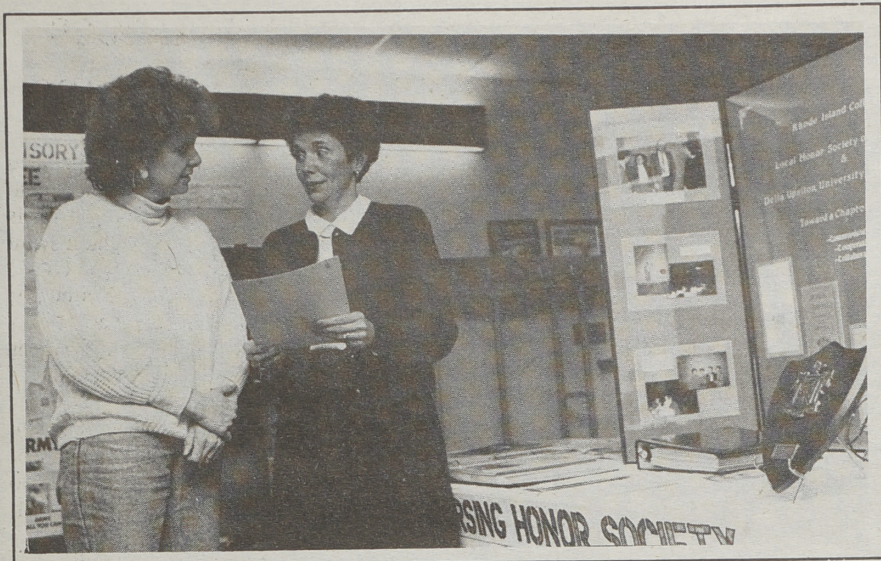
Henry Nardone addresses the January commencement audience.



Commencement soloist Elinor Conroy rehearses before the ceremonies in the company of her children, Michelle, 8-months, and Philip, 3½. The storm caused Mrs. Conroy to lose her babysitter. Fortunately another was found before it was time to go on.



Cheryl Ann Roccio of North Providence emerges triumphantly from Roberts Hall auditorium after last month's winter commencement ceremonies at Rhode Island College. The ten-year banner pinned to her gown indicates the time it took her to earn her B.A. and M.A. degrees, both in psychology.



Donna Long, a senior R.N., talks to Assistant Professor Paula Viau about membership in the nursing honorary society, Sigma Theta Tau.

Department of Nursing celebrates 20th anniversary

The Rhode Island College Nursing Department will be celebrating its 20th anniversary with a day-long event scheduled for Saturday, March 31 in Gaige Hall.

The 20th Anniversary Committee is accepting nominations for The Outstanding Alumni Award to be awarded that day. Deadline for submission of nominations is Feb. 28.

Dr. Constance Pratt, chair of the nursing department will give the welcome followed by a keynote address by Dr. Billye J. Brown, president of Sigma Theta Tau International. A luncheon will be held in the Faculty Center.

In the afternoon, a presentation session of clinical practice and nursing research will be conducted followed by the presentation of alumni awards.

The cost for the day's events is \$20. Registration deadline is also Feb. 28.

Since its beginning in 1970, approximately 1,800 students have graduated from the Rhode Island College Department of Nursing.

Alumni are now providing health care services in a variety of settings throughout the United States and in several foreign countries.

To obtain registration or nomination information, contact Paula Viau, assistant professor of nursing, at 456-9671 or 456-8013.

★ BUS TRIP

(continued from page 1)

A Latin American Studies student at RIC, Paty, as she prefers to be called, took time out from her studies here and enrolled at the Institute for International Cooperation and Development (IICD), which is headquartered in Williamstown, Mass.

After a two-month indoctrination/preparation period there (which included a concentrated study of Spanish), she and 12 others—mostly college students or recent graduates—and a group leader from IICD, traveled by Greyhound bus to Texas and from there to Guatemala, Nicaragua, Belize and then, by plane to Cuba.



PATRICIA BERGANTINI

Met with aliens

The group met with non-American "aliens" in a detention center in Harlingen, Tex.; heard Guatemalan Indians in a refugee camp in Mexico relate horror stories of how the military came into their villages and shot all the young men as suspected guerrillas, and helped

in the reconstruction of homes in Bluefield, Nicaragua, blown apart from Hurricane Joan in October of that year.

"The people we meet become our teachers and the world our classroom," notes IICD.

"We travel to learn about the lands and peoples of the world. Wherever we go, we seek hope within conflicts, and rich human spirit in the midst of extreme power and poverty."

Paty and her group saw and experienced it all.

Their tools were cameras, recorders, pens and paper; their strengths, American higher education, youthful American optimism, a willingness to learn, compassion.

Spoke with peasants

They spoke with peasants and priests, workers and businesspeople, revolutionaries and government officials.

"It was all part of a program of travel, study and international solidarity," says Paty, who adds: "It was one of the most rewarding experiences of my life."

And after it was over, Paty and the other group members returned home with their notes, their film and the memories of what they had seen and experienced.

This, they shared via lecture-slide presentations to high school students "all over" the Northeast.

These included schools in Massachusetts and New Hampshire, a public school in the Bronx, a private school in Manhattan and a school for troubled children in Harlem.

They sang songs in English and Spanish with the students. Two members of the group played guitars.

...a little closer

Per chance, they brought the diverse peoples of the world a little closer in their understanding of one another.

Volunteer Fair set for Feb. 7

For the second year, members of the Rhode Island College Campus Center will sponsor a Volunteer Fair, Wednesday, Feb. 7 from 12:30 to 4 p.m. in the Student Union Ballroom.

Last year, more than 100 students participated in the event. The organizers of this year's event hope to attract many more students, according to Kristen King, student activities coordinator.

Representatives from hospitals, day-care centers, nursing homes, and other community agencies like SAVE THE BAY, Big Brothers, and the Providence Animal Rescue League will be available during the afternoon to answer questions and match volunteers to agencies.

Realizing the time constraints on students here, King encouraged those non-profit groups attending the fair to let students know where they could be helpful on a one-time basis.

"If you want to know how you can lend a hand to make a difference in the world, either on a one-time, temporary, or extended period, come and listen to what opportunity is right for you," King said. "You could make a difference."

For future use, King is preparing a "Volunteer Opportunity Log" for students to browse through and decide which group interests them.

For information on the fair, call 456-8034.

Paty feels strongly that much of what she learned at RIC helped with her success in dealing with the peoples of Central America and relating her experiences to the students in this country.

"I want to stress how much RIC and the Latin American Studies Program helped me. I feel I have an historical perspective because of my studies here," she says.

"So many many times during the trip I'd say to myself, 'I'm glad I learned this or that at Rhode Island College'." She credits courses she took here in history and anthropology especially.

Paty lives with her father, Albert, and is one of six daughters he and the late Mrs. Mary (Napollilo) Bergantini parented. Of special note is the fact that four of Paty's sisters—Angela (Bergantini) Ionata, Joan (Bergantini) Grillo, Nancy Berganti and Gerry (Bergantini) Williams—are all RIC graduates! The oldest sister, Marie (Bergantini) Companion, is not a RIC grad.

A 5-RIC-grad family

When Paty graduates this May, she'll make it a five-RIC-grad family, and she and they are proud of that.

Paty would encourage other RIC students to consider getting involved with the IICD programs which take young adults to Central America and the Caribbean, Africa, Brazil, Europe and the Soviet Union as well as to various areas in the United States.

There is a cost involved as there is in going to college, but civic and religious groups will often assist students who cannot afford it, says Paty.

When compared to the costs of traveling to these oftentimes distant sites and remaining there for five months, "it really isn't bad," Paty assures.

Of course, she explains, "people don't generally do something like this until they reach a certain level of readiness."

She credits four people who have been or are now at RIC with helping her achieve her level of readiness: Sally Marks in history, Eileen Maynard in anthropology, Mary Ball Howkins in art, and Norman Pyle, her advisor.

For more information about the IICD programs, you may write to the Institute for International Cooperation and Development, P.O. Box 103, Williamstown, MA 01267. IICD is a non-profit corporation.

★ DANCE CO.

(continued from page 1)

Says Harris: "Unlike Rudolf Nureyev, he has not tried to ignore the depredations of time...his parts are carefully circumscribed in accordance with his current physical capacities."

"Only Merce Cunningham's company can be said to maintain its style and look," writes Judith Green for Knight-Ridder Newspapers, in her recent article citing the "decline of the great modern-dance companies" in the past decade.

Cunningham and his dancers have logged over a million miles on tour in the United States and abroad, performing in 300 cities in 35 countries on five continents.

Cunningham, born in Centralia, Wash., received his first formal dance and theater training at the Cornish Institute of Allied Arts in Seattle.

...his parts are carefully circumscribed in accordance with his current physical capacities.

Soloist with Martha Graham

From 1939 until 1945, he was a soloist in the company of Martha Graham during which time he began to choreograph independently. He presented his first New

York solo concert with John Cage in April 1944.

He continued to present annual concerts, by himself or with an ad hoc group of dancers, until the formation of the Merce Cunningham Dance Company at Black Mountain College in the summer of 1953.

Since then, he has choreographed well over 100 works for his company.

His commissioned works include those for the New York City Ballet and the ballet of the Paris Opera. Numerous of his works have entered the repertory of other companies, including the American Ballet Theater, the Boston Ballet, the Pennsylvania Ballet, the Rambert Dance Company in London, the Cullberg Ballet in Stockholm, the Theatre du Silence in France, the New Dance Ensemble, Sharir Dance Company, and Concert Dance Company of Boston.

Collaboration with filmmaker

Cunningham's other works include collaboration with filmmaker Charles Atlas on three original works for video; with Elliot Caplan for PBS Great Performances series; classes and workshops at the Merce Cunningham Studio as well as lectures and workshops around the United States and overseas.

He has also collaborated on two books about his work, *Changes: Notes on Choreography* and *The Dancer and the Dance*.

Recognition has come to Cunningham from many quarters, including two Guggenheim Fellowships for choreography, the Dance Magazine Award, the medal of the Society for the Advancement of Dancing in Sweden, and the gold medal for choreographic invention at the fourth International Festival of Dance in Paris.

Legion d'Honneur

He's received the Laurence Olivier award for best new dance production in London in 1985 and last year was named "chevalier" of the Legion d'Honneur by French President Mitterrand.

Tickets for the performance are \$15 general admission with discounts available for senior citizens and students. The box office opens Monday, Feb. 12., from 10 a.m. to 4 p.m. weekdays and from 10 a.m. until time of performance on the day of the event. For tickets call the box office at 456-8144.



Keeping Score

with Dave Kemmy

Anchormen riding high in Little East

The men's basketball team is enjoying a very successful season thus far with a 12-4 overall record and a sparkling 5-0 mark in the rugged Little East Conference.

The Anchormen have been ranked in the Top Ten in New England all season long with their most recent standing number five in the UPI Coaches Poll.

The team's success can be attributed to a number of factors, none more so than the consistent play of the five starters. That group is led by center Troy Smith a consensus All-New England performer who leads the team in scoring (20.0 points per game) and rebounding (12.9 per game). Smith is ranked nationally in rebounding and was the co-player of the year in the Little East Conference last season.

His outstanding play has brought the team to the top in the Little East and near the top in New England. He is being touted as an All-American candidate and has all the credentials to back it up.

While Smith has been a dominating presence inside, the tandem of Dante Mabray and Chuck Santos have been hot from the outside. Mabray is second on the team in scoring (16.3) and has some great moves to the basket. A transfer from Salve Regina College, he has provided some added scoring punch and enthusiasm to the team.

Santos has been brilliant from the outside, hitting 15 to 20 foot jumpers with ease. The talented senior is third on the team in scoring (14.3) and has been a big help off the boards as well, averaging 4.5 per game.

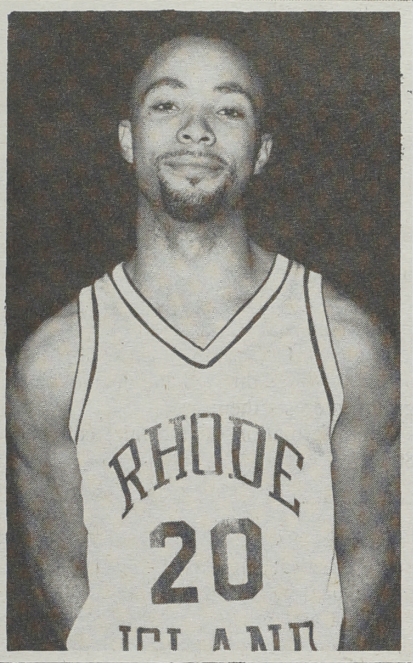
Junior forward Chris O'Toole is perhaps the most pleasant surprise for Coach Jim Adams this year. O'Toole has been a workhorse on the court and presently stands fourth in scoring (13.3) and second in rebounding (6.6). A dedicated and very hard-working player he is having his finest season to date.

A pair of freshmen have shared time starting at the point guard position and both have done outstanding jobs. Titus Graham is as quick as they come and does a nice job handling the ball and the offense. Although averaging only 4.8 points per game, he leads the team in assists with 72 and has been a good defensive player as well. He has alternated with Mike Kolesnik, one of the flashiest passers to ever don an Anchorman uniform. He has made some unbelievable passes to date and with three more years to go we're in for some outstanding play from him for a long time. He is second on the team in assists with 65 and has worked very well with Titus.

A trio of seniors have been very valuable off the bench. Forward Dan Comella has been a role player for four years and no one does it better. If you need a quick hoop or someone to bang the boards and play solid defense, Comella is the man. Guard Todd Keefe is the team designated three-point shooter and is ranked in the top ten in the country hitting 58.6 percent of his shots. He has hit numerous key three-pointers in his career and this season has been no exception.

Whenever Coach Adams needs some instant defense off the bench the first man he goes to is senior Jeff Allen. Jeff can stick with the other teams best player and hold him at bay for a long time. He is also a consistent offensive player and has proven to be a valuable player off the bench.

The team has never won the Little East Conference Championship, but with just five conference games remaining, the team has their sights set on the title. With continued consistent play and contributions from so many different players this team could go a long way in 1990!



DANTE MABRAY

Women's Basketball

The women's basketball team is also having an excellent Little East season.

The Anchorwomen are 4-1 in the conference, good for first place. The team is 8-9 overall on the year.

Senior Debbie Allen has been the young squad's catalyst thus far, leading them in scoring (16.6) and second in rebounding (8.1). Juniors Renee Walker and Gerene Boisvert have also played well as has senior Lisa Sweet, who has really come into her own the past three weeks.

Coach Ken Hopkins has to be pleased with the efforts of his five freshmen. They have played like seasoned veterans so far and are very much the reason why this team is in first place in the Little East.

Guards Robin Gobeille, Jill Corey and Jonette Walker have played superbly. Forward Katie Baker has been a big plus off the bench and forward/center Ramona Foster leads the team in rebounding (9.1) and has been a major force for the team.

The team has a couple of big games coming up so the next week will surely tell exactly what this team is made out of.

Gymnastics

The women's gymnastics team is off to an 0-3 start, but they have improved each and every meet and continued improvement will surely mean some victories.

The team lost to the Mass. Institute of Technology 154.30 to 144.55 in Cambridge recently. Freshman Kerri Cunha had an outstanding day, finishing second in the all around. She placed first on the balance beam, and second on vault, uneven bars and in the floor exercise.

Junior Captain Jill D'Abrosca had another strong, consistent outing. She was third all around with a 31.15, finishing third on the balance beam and tied for third on the vault.

Recreation Center announces spring programs and activities

Faculty, staff, alumni and community residents within a five-mile radius of the College are invited to join the Recreation Center. Fees vary for individual or family memberships.

Facilities available in the newly-opened center include a 5-lane, 25-yard, "L"-shaped indoor heated swimming pool; locker, steam and sauna rooms; a 4-lane, one-tenth mile indoor track; basketball, volleyball and tennis courts; a 13-station Eagle-Cybex fitness system; 3 Airborne Exercycles, 2 Concept II rowing machines; sitting/reading areas; and a 100-vehicle parking lot. The center is fully accessible for the disabled athlete.

John S. Foley, director of the Recreation Center, announced programs and activities scheduled for spring semester. They include a number of self-directed drop-in opportunities in recreational activities as well as structured programs.

A number of special events are planned for the semester: a one-day ski trip to Waterville Valley, New Hampshire is scheduled for Feb. 11; Jaws Night, a swim program, is scheduled for March 7; Bowling Night is planned for March 23; a Block Island Bike Trip is scheduled for April 21; and an overnight Canoe Trip is planned for April 28-29. Most of these events require a fee.

Members of the recreation center who prefer to engage in recreational sports or activities on a more informal basis may do so. Court time for volleyball, basketball, tennis and water basketball is available. Check the front desk for availability.



The Recreation Center is open Monday through Thursday from 8 a.m. to 9:30 p.m., Friday from 8 a.m. to 4:30 p.m., and Saturday and Sunday from noon to 5 p.m.

The field house, which includes the running track, weight and cardiovascular area, and playing courts closes one-half hour before the building is scheduled to close.

The pool is open Monday through Thursday from 10 a.m. to 8 p.m.; Friday from 10 a.m. to 4 p.m.; and Saturday and Sunday from noon to 4:30 p.m.

The weight and cardiovascular area is open Monday through Thursday from 9 a.m. to 9 p.m.; Friday from 9 a.m. to 4 p.m.; and Saturday and Sunday from noon to 4:30 p.m.

For additional information call 331-3213 or stop by the Recreation Center during normal weekday office hours.

Public Relations Club formed here

First of its kind in R.I.

After almost a year of trying, a public relations club has formed at Rhode Island College.

The club, the first of its kind in Rhode Island, is sponsored by the Southeastern New England Public Relations Society (PRS) and the College's communications and theatre department.

According to Chris Butler, club president, the club is designed to give students experience in public relations while also offering its members the opportunity to meet professionals in the public relations field.

Once the club is fully organized, it will do public relations work for other clubs on campus as well as for non-profit organizations in the community.

According to Stephanie Cheney, a PR professional and advisor to the group, "This club has the creativity and drive to provide its clients with very effective and professional public relations campaigns."

The PR Club (PRC) will take on projects such as designing posters, writing newsletters, creating slogans, writing press releases, planning and running events, and creating and executing fund raisers.

According Butler, "All an organization has to do is come to us with an idea, we will expand on it and make it a reality."

The club hopes that once a full-time public relations professor is hired in the fall it can become a subgroup of the PRSA and a PRSSA chapter. Until then, the club will be linked with the Southeastern New England PRSA and its members will share the benefits.

The following were elected officers of the club: Chris Butler, president; Tricia Kennelly, vice president; Jen Spirito, secretary, and Joseph Bothelho Jr., treasurer.

Local AMA chapter hosts Chip Young, PR director of SAVE THE BAY

Members the Rhode Island College Chapter of the American Marketing Association will host Chip Young, public relations director of SAVE THE BAY Wednesday, Feb. 7 at 1 p.m. in the Faculty Center as they participate in national Marketing Week activities slated from Feb. 4 through 10.

The designated week was developed to help promote a greater understanding and appreciation of marketing principles and practices to the general public.

The 1990 theme, "Marketing: It Makes a Good Life Better," encourages activities that concentrate on the use of marketing promotions as part of the solution to issues facing the nation in the coming decade. Seen among the most important of issues is the protection of the environment, according to the local chapter's press release.

For further information, call Michelle Contrada at 723-6788.

RIC Theater to stage Lorca's 'Blood Wedding' Feb. 15-18



BLOOD WEDDING: RIC Theater actors (above from left) are Sandi Sullivan, Robert Teer and Marilyn Brown. (What's News Photo by Gordon E. Rowley)

Blood Wedding (*Bodas de sangre*), a tragedy in three acts by Federico Garcia Lorca, will be staged by Rhode Island College Theater Feb. 15-18 in Roberts Hall auditorium. Performances on Thursday, Friday and Saturday evenings are at 8 o'clock with a Sunday matinee at 2.

Translated by Michael Dewell and Carmen Zapata, the play was first published and produced in 1933. It is set in the hills of Andalusia in early 20th-Century Spain.

Also presented as *Bitter Oleander*, this is perhaps Lorca's best-known play and the first of his trilogy of "rural tragedies."

Blood Wedding is full of rich and varied folk poetry, symbolism and powerful elemental passions that victimize and doom everyone in the play. But these passions are restrained by a stark, ritualistic plot that bears only a superficial resemblance to the sensational newspaper account that inspired it, according to earlier play publicity.

According to Lorca's brother, Lorca thought about the play for a year and then

wrote it in one week.

Except for Leonardo (played by RIC sophomore Robert F. Teer of Glendale, R.I.), the characters are nameless.

Although the fame of Federico Garcia Lorca, who died in 1936, had temporary glow from the fact that he was shot in Granada by Franco adherents, it rests solidly upon his work as the leading poet and poetic dramatist of his generation in Spain.

University trained, Lorca, nonetheless, chose his themes from the simple people of his native Andalusia, and for three years (1931-1934) guided a traveling theater, La Barraca, which brought classics of the Spanish stage to the people.

His trilogy plays, including *Blood Wedding*, present the same theme: the tragedy rising from frustrated women yearning to be fulfilled.

P. William Hutchinson, professor of theater, will direct the RIC production.

Tickets are \$5.50 general admission with discounts available for students and senior citizens.

For more information or tickets call the Roberts box office at 456-8060.

Lenox Brass renders 'dazzling' performance of the classics

Will perform in RIC Chamber Music Series

The Lenox Brass Quintet brings a bold new dimension to the concert stage with premieres of new works by New England composers and dazzling performances of the classic repertoire for brass, according to John Pellegrino for the Rhode Island College Chamber Music Series.

The quintet will perform as the first entry in the winter-spring series on Wednesday, Feb. 14, at 1 p.m. in Roberts Hall 138 (recital hall). The recital is free and open to the public.

The program includes Victor Ewald's "Quintet No. 3," Robert Carriker's "Yugorsky March" and George Gershwin's "Porgy and Bess Suite."

"LBQ played with witty bravura," said *The Boston Phoenix* of the Lenox Brass Quintet. The *Worcester Telegram* said of its performance: "Clear lines, crisp articulation, subtle dynamic contrasts...the music was rendered at state-of-the-art performance levels."

Since its founding in 1982, the quintet has been recognized as one of New England's finest chamber music ensembles, having performed in concert series, at churches, college campuses and museums.

Recent appearances include those at the Old North Church in Boston, Longy School of Music, MIT, Holy Cross College, and the Fogg Art Museum at Harvard.

The quintet is comprised of full-time professional musicians, who perform regularly as a quintet as well as with other notable Boston and New England-based orchestras.

Quintet members are Greg Whitaker, trumpet; Thomas Smith, trumpet; Robert Couture, trombone; Robert Carriker, tuba, and Louisa Striker, French horn.

For more information, call Pellegrino at 456-8244.



THE LENOX BRASS QUINTET

Calendar of Events

Feb 5.-Feb. 19

Monday, Feb. 5

Noon to 1 p.m.—*Alcoholics Anonymous* meeting. Student Union 305.

8 p.m.—*Black History Month* event. Play, entitled *Harlem Renaissance*, to be presented in Gaiage Auditorium. The play's four-person cast includes jazz great Stan Strickland.

Monday-Friday, Feb. 5-9

Curtis X/Recent Works to be on display at Bannister Gallery, Art Center. Gallery hours: Monday-Friday, 11 a.m. to 4 p.m.; Tuesday and Thursday, 6 to 9 p.m.

Tuesday, Feb. 6

11 a.m. to Noon—*Academic Development Workshop*, entitled "Notetaking and Summary Sheets," to be conducted by Jayne Nightingale and Meryl Bernstein of the Academic Development Center. For more information call the center at 456-8071.

7:30 p.m.—*Men's Basketball*. Rhode Island College vs. Wheaton College. Home.

Wednesday, Feb. 7

12:30 to 1:30 p.m.—*Academic Development Workshop*, entitled "NTE Test Anxiety," to be conducted by Jayne Nightingale of the Academic Development Center. For more information call the center at 456-8071.

12:30 to 2 p.m.—*Adult Children of Alcoholics* to meet. Craig-Lee 127.

12:30 to 2:30 p.m.—*Black History Month* event. Lecture and video presentation on the "Role of the Black Museums and Historical

Societies across America," to be given by Linda Coleman, executive director of the Rhode Island Black Heritage Society. Gaiage Auditorium.

12:30 to 4 p.m.—*Volunteer Fair* to be held by the Campus Center in the Student Union Ballroom. Information on various volunteer programs will be available.

1 p.m.—*American Marketing Association's* Rhode Island College chapter to host a speech by Chip Young, public relations director of Save the Bay. Faculty Center.

7 p.m.—*Women's Gymnastics*. Rhode Island College vs. Bridgewater State College. Home.

7 p.m.—*Wrestling*. Rhode Island College vs. Massachusetts Institute of Technology. Away.

Thursday, Feb. 8

11 a.m. to Noon—*Academic Development Workshop*, entitled "Study Strategies for the NTE," to be conducted by Joan Tooley of the Academic Development Center. For more information call the center at 456-8071.

8 p.m.—*Black History Month* event. "Tall Tales" to be presented by Lenny Cabral, a local storyteller who has been entertaining children and adults for many years. Student Union Ballroom.

8 p.m.—*Men's Basketball*. Rhode Island College vs. Suffolk University. Away.

Saturday, Feb. 10

1 p.m.—*Wrestling*. Quad meet at Rhode Island College with Amherst, Bowdoin, and Williams.

2 p.m.—*Women's Basketball*. Rhode Island College vs. University of Southern Maine. Away.

2 p.m.—*Women's Gymnastics*. Rhode Island College at University of Bridgeport with University of Massachusetts-Amherst.

4 p.m.—*Men's Basketball*. Rhode Island College vs. University of Southern Maine. Away.

Monday, Feb. 12

Noon to 1 p.m.—*Alcoholics Anonymous* meeting. Student Union 305.

7:30 p.m.—*Women's Basketball*. Rhode Island College vs. Wheaton College. Home.

Monday-Friday, Feb. 12-16

Curtis X/Recent Works to be on display at Bannister Gallery, Art Center. Gallery hours: Monday-Friday, 11 a.m. to 4 p.m.; Tuesday and Thursday, 6 to 9 p.m.

Tuesday, Feb. 13

7:30 p.m.—*Wrestling*. Rhode Island College vs. U.S. Coast Guard Academy and Bridgewater State College. Home.

Wednesday, Feb. 14

12:30 to 2 p.m.—*Adult Children of Alcoholics* to meet. Craig-Lee 127.

1 p.m.—*Lenox Brass Quintet* to perform in the Rhode Island College Chamber Music Series. Roberts Hall 138. (For details, see story in this issue.)

7 p.m.—*American Pictures*, a slide presentation and lecture by Danish photographer Jacob Holdt, to be given in Gaiage Auditorium.

Thursday, Feb. 15

6 p.m.—*Women's Basketball*. Rhode Island College vs. Eastern Connecticut State University. Away.

8 p.m.—*Men's Basketball*. Rhode Island College vs. Eastern Connecticut State University. Away.

9 p.m. to 1 a.m.—*Black History Month* event. Mixer to be held by Harambee. Student Union Ballroom.

Thursday-Saturday, Feb. 15-17

8 p.m.—*Rhode Island College Theatre* to present Federico Garcia Lorca's *Blood Wedding*. Roberts Hall auditorium. There will be a 2 p.m. performance on Sunday, Feb. 18. (For details, see story in this issue.)

Friday, Feb. 16

7 p.m.—*Women's Gymnastics*. New England Championships at Rhode Island College.

Saturday, Feb. 17

1 p.m.—*Wrestling*. Tri-meet: Rhode Island College at Trinity College with University of Massachusetts-Boston.

5:30 p.m.—*Women's Basketball*. Rhode Island College vs. University of Massachusetts-Boston. Home.

7:30 p.m.—*Men's Basketball*. Rhode Island College vs. University of Massachusetts-Boston. Home.

Monday, Feb. 19

Noon to 1 p.m.—*Alcoholics Anonymous* meeting. Student Union 305.