



WHAT'S NEWS

AT RHODE ISLAND COLLEGE

Vol. 17 Issue 1

Circulation over 38,500

Sept. 9, 1996

\$1million Feinstein Foundation gift; largest private grant in RIC history

At the Rhode Island College opening coffee hour on August 28, President John Nazarian gratefully accepted the College's first-ever \$1 million gift, which was provided by the Rhode Island-based Feinstein Foundation.

In announcing the gift, the proceeds of which will be used to benefit the School of Education and Human



THE BIGGEST GIFT EVER: President John Nazarian holds aloft the check he has just received from Edward Dambruch (right), executive director of the Feinstein Foundation. (What's News photo by Gordon E. Rowley)

Development, the President said that the School will be re-named the "Feinstein School of Education and Human Development."

The permanent endowment and the name change, which have been approved by the state Board of Governors for Higher Education, have received high praise from the School's Dean and its department chairs, who have expressed great appreciation for this historic opportunity.

Noting that this contribution signals that Rhode Island College has "come of age in the realm of major gifts," Nazarian later expressed that the Feinstein gift is "a clear statement of confidence in Rhode Island College, its faculty, and in particular, the School of Education and Human Development," which, the President noted, "has brought honor to the College as the 'leading teacher training institution in the state.'"

President Nazarian indicated that the School is not restricted in its use of the proceeds from the endowment, and said, "It is my recommendation that these funds be used for faculty development, research, and travel, among other worthwhile but otherwise unmet needs."

The Feinstein Foundation and its namesake, philanthropist Alan Shawn Feinstein, are dedicated to improving conditions within society

President's opening remarks for '96 academic year highlighted by announcement of \$1M gift

Voters asked to approve \$74 million for the system of higher ed in bond issues on Nov. 5

by Clare Eckert
What's News Editor

A dreary day outdoors did not diminish the spirit of the Rhode Island College community as it came together on August 28 in Donovan Dining Center to celebrate the beginning of the 1996-1997 academic year. Nearly 600 faculty and staff attended the morning event which included remarks by RIC President John Nazarian and the state's new Commissioner of Higher Education Stephen T. Hulbert.

Highlighting the President's address was the announcement of a \$1 million gift from the Feinstein Foundation. "It is now my great honor to announce the largest single private gift in the history of Rhode Island College," the President began, "...an endowment to the School of Education and Human Development in the amount of one million dollars."

Following a round of applause, President Nazarian went on to say "that in recognition of this historic gift and at the recommendation of the College, the Board of Governors has approved the renaming of the School of Education and Human Development as the Feinstein School of Education and Human Development." At which point, Edward Dambruch, executive director of the Foundation, walked to the podium and delivered a check to the President who promptly handed it to Vice President for Finance and Administration Lenore DeLucia. (See related story this page)

As part of the announcement, President Nazarian reminded the audience that the Feinstein Foundation, started by local philanthropist Alan Shawn Feinstein, awarded \$500,000 two years ago as seed money to enable the startup of the joint doctoral program in education between the College and the University of Rhode Island.

Prior to the President's release of the Feinstein gift, he introduced newly-appointed Commissioner Hulbert to the RIC community. (Hulbert left his position as provost and vice president of academic affairs at the University of Northern Colorado to begin his appointment in Rhode Island this summer.)

"I appreciate the opportunity to be with you," he began, reflecting on his professional life as a member of a college or university community. "My love is for the Rhode Island Colleges of the world."

Remarking that his first public appearance in Rhode Island was at

RIC's May commencement, he congratulated the faculty for their active participation during the exercises and to the large faculty turnout for commencement. "I congratulate you for your enthusiasm for your stu-

dents and colleagues.

"I am enthused by my new role," he said. "My job is to convey to the broader community what we do and

Continued on page 8

Improved telecommunications and Performing Arts Classroom Facility for RIC if Referenda #2 and #3 approved

President John Nazarian announced a "call to action" to the College community at the 1996 opening convocation on Aug. 28 in support of two system-wide higher education referenda questions to be voted on election day Tuesday, Nov. 5. The President's announcement of the General Assembly's approval of Referendum #2: Higher Education Telecommunications and Referendum #3: Higher Education Facilities was applauded by the 600

passage of the bonds, the President said, "we - each and every one of us - must capitalize on that opportunity. It is up to us and our extended family and friends to convince a majority of voters of the need to invest in higher education to help bring about a brighter future for Rhode Island."

Referendum #2 is for \$40.6 million, of which the College's share is \$7.6 million. This telecommunications initiative follows a 1995 study by an external committee - created



This is the slogan designed by members of the campaign committee to draw attention to the two referenda for final approval by voters

or more faculty and staff in attendance at the annual event.

"The legislature's passage of these two bond issues is an expression of their confidence in Rhode Island College and the other two institutions," he said. "What they have given us by their stamp of approval of these referenda is but an opportunity."

Emphasizing the need for individual and collective support for the

by the Board of Governors for Higher Education - to evaluate the capabilities of telecommunications system-wide, and to make recommendations.

If approved, the initiative would be completed in two phases over four years. The first phase includes wiring of 114 buildings at RIC, URI,

Continued on page 8

Proud to be a part of RIC!



"I am enjoying my career at Rhode Island College. I especially like having one foot in the academic world and one foot in retailing. Also, I'm a Rhode Island College alum."

Jayne Kopic, assistant manager of the Campus Store

With this first issue **PROUD TO BE A PART OF RIC** becomes a new item for our readers every other issue. Be prepared to be asked "why you're proud to be a part of Rhode Island College" by our traveling photographer, Gordon E. Rowley.

Continued on page 8

Continued on page 8

The Way We Were...

This popular item in What's News will continue this year in order for you to be able to revisit your alma mater with a selection of photos from the past — the College's past, whether the current era (Rhode Island College) or past eras (Rhode Island College of Education or Rhode Island State Normal School). We invite your contribution of old photos, along with sufficient information about each such as who's in the photo and what they are doing, the year it was taken and place (if possible). In the meantime, we'll continue searching our files for interesting pictures of past College life.

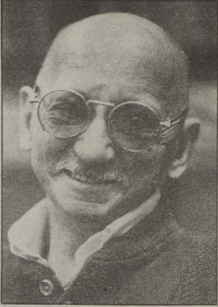


This issue's bit of nostalgia was sent to us by Elda Petrucci Coppa, Class of 1939. The photo dates from May of 1937 when it was a tradition at Rhode Island College of Education (in downtown Providence) to set up a Maypole and for the sophomores to gather daisies and thread them together into a long chain which then would be part of a ceremony honoring graduating seniors. Syd Cohen, Class of 1940, recalls that sometimes the daisies would be gathered from a field on Fruit Hill. "We wore white dresses and daisies in our hair," Mrs. Coppa recalls of the tradition, which seems to have ended when the College moved to the Mt. Pleasant campus in the late 1950s.

In Memoriam —

History Prof. Donald Sippel

Donald V. Sippel, 57, of Providence, a professor of ancient history at Rhode Island College for 30 years, died July 28 in the Philip Hulitar Hospice Care In-Patient Center. He was the husband of Navar L. Steed.



DONALD SIPPEL
(File Photo)

Born Nov. 10, 1938, in Cincinnati, Ohio, a son of the late Theodore E. and Eva (Boothby) Sippel, he lived in Woonsocket before moving to Providence 15 years ago. He studied at the University of Cincinnati earning a bachelor's degree in history, a master's degree in medieval history and a Ph.D. in ancient history.

Joining the RIC faculty in 1965, he previously had been a research fellow at the American Numismatic Society in New York City for a year and a lecturer at the University of Cincinnati for a year while a student.

He was a member of the American Historical Association, the American Numismatic Society, the American Philological Association, the Society for the Promotion of Hellenistic Studies (London), and the American Association of Ancient Historians.

He was awarded a National Endowment for the Humanities Fellowship and was a Sherlock Holmes scholar.

Besides his wife, he leaves a sister, Cheryl Kampf of Greenwood, S.C.

A memorial service was held at St. Martin's Episcopal Church, Providence.

**The Office of
News and Public Relations
welcomes the College community
and friends to another academic year.**

Enjoy!

Professional development institutes offered by School of Ed/Continuing Ed

In order to provide teachers with professional development opportunities, Rhode Island College's School of Education and Human Development and the Office of Continuing Education and Summer Sessions have developed several Professional Development Institutes. Each institute is offered for one graduate credit and meets for 15 hours of class time.

All institutes are guided by RIC policies and are held on the RIC campus. Attendance at all sessions is required.

The fall semester's offerings include:

1. Assessment in Mathematics for Middle-Level Teachers (4-8)
2. Profile Analysis of WISC-III
3. Teaching and Learning Through the Multiple Intelligences
4. Strategies for Creating Harmony and Cooperation in Your Classroom
5. Team Building
6. Mathematics for the Middle School Curriculum

7. Authentic Assessment
8. Community-Based Folk Art
9. Without Geography, Young Children are Lost
10. Soil and Water Quality Testing
11. Sound Waves Across the Curriculum
12. Cooperative Learning: Principles and Management
13. Developing and Implementing Integrated Units
14. Strategies Involving Cross-cultural Families in the Educational Process
15. Home Page Workshop
16. E-Mail and the WWW

The costs that follow include all tuition and fees: one institute: \$160; two institutes \$285; three institutes \$415; four institutes \$540.

All registration will be done by mail. Call the RIC Office of Continuing Education and Summer Sessions at 401-456-8091 for institute descriptions, dates and a registration form.

School-to-Work institute offered

Rhode Island College is offering an eight-week institute to bring information and hands-on experience in School-to-Work transition to educators and business people.

The institute will provide experience in practical curriculum development to integrate SCANS competencies into teaching and training. (SCANS is the term used for student competencies identified in 1993 by the U.S. Department of Labor's Secretaries Commission on Achieving Necessary Skills.)

The institute will run from Oct. 8 through Nov. 26. Information and work sessions will be held on Tuesdays on the RIC campus from 4 to 7 p.m. Field visits and presentations will take place at various locations off campus on Thursdays at either 2 to 4 p.m. or 4 to 6 p.m.

The content of the institute, entitled "School-to-Work (STW) Training Institute," was developed at RIC by a state-wide team of experts in the field of School-to-Work. RIC members included Elizabeth Dalton, James McCrystal, David Nelson, J. David Sienko, Nancy Sullivan and William E. Swigart.

The institute will help participants answer these questions:

- What are the skills that people need to succeed in the world of work?
- What qualities and skills are needed by business in its workforce?
- How can you fit new skill instruction into an already expanding curriculum?
- What models exist for STW integration and systems change, and how can they be practically applied to the classroom or business?
- How can businesses and schools work together to develop a more prepared workforce for the future?

This course, subsidized through the Rhode Island Human Resource Investment Council and the Rhode Island School-to-Work Office, is being offered at the cost of \$150. Three graduate or undergraduate credits can be earned through successful completion.

Enrollment is limited. For a complete course description or to register, contact the Office of Continuing Education and Summer Sessions at 401-456-8091.

WHAT'S NEWS AT RHODE ISLAND COLLEGE

Editor: Clare Eckert **Associate Editor:** George LaTour

Staff: Pauline McCartney, Word Processing Supervisor; Gordon E. Rowley, Photographer; Cynthia L. Sousa, Editorial Assistant

What's News at Rhode Island College (US681-650) is published biweekly by Rhode Island College Office of News and Public Relations, 600 Mt. Pleasant Ave., Providence, RI 02908. It is published throughout the academic year except during semester breaks. Second-class postage paid at Providence, RI

Postmaster: Send address changes to What's News at Rhode Island College, Office of News and Public Relations, 600 Mt. Pleasant Ave., Providence, RI 02908

Deadline: Deadline for submission of copy and photos is noon the Friday two weeks before publication date.

Telephone/FAX: (401) 456-8090: FAX 401-456-8887

Printing: TCI Press

Multi-talented Rhode Island leader to head Alumni Affairs



GETTING ACQUAINTED: Ellie O'Neill (left), new interim director of Alumni Affairs meets with Cheryl Precopio, assistant director of development for annual giving. (What's News photo by Gordon E. Rowley)

by Cynthia L. Sousa
What's News Writer

Eleanor "Ellie" O'Neill has accepted the position of interim alumni director. O'Neill comes to Rhode Island College after serving for 10 years as the program director and alumni coordinator for Leadership Rhode Island, a central program of the Greater Providence Chamber of Commerce.

O'Neill's expertise includes alumni programming, the development of leadership skills, annual fund-raising, volunteer board development, publications, budget development and major event planning.

Reporting to Marguerite M.

Brown, RIC director of development, O'Neill said she is delighted to be on board and is "looking forward to building upon programs already in place and adding new programs for alumni."

Her primary responsibilities include creating, organizing and implementing alumni programs to develop a strong base of support for the College; to enrich the experiences of alumni in order to instill a sense of pride in the College; to establish policies, programs and services in support of institutional resource acquisition goals and to represent the interests of the College to the Alumni Association.

She has already met with Brown, Cheryl Precopio, Class of 1991, assistant director of development/Annual Fund, and Syd Cohen, Class of 1940,

president of the Alumni Association, and said she is enthusiastic about working with them on upcoming projects such as the Alumni Golf tournament scheduled for Sept. 30 (see page 12) and the Annual Fund.

In addition, O'Neill said the fact that a new, updated alumni directory is due out at the beginning of 1997 indicates "the importance of the support of the 38,000 alumni, the majority of whom reside in the state, to the College."

O'Neill said she is delighted with the reception she's received. "Everyone has been so friendly and helpful."

From 1988 to 1992, O'Neill was a member of the Barrington Town Council, serving for two years as its vice president. For her "tireless work for introducing and promoting good government issues," as a delegate to the 1986 Constitutional Convention, O'Neill was cited by Common Cause of Rhode Island.

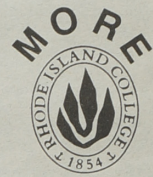
In 1990, she received the Junior League of Rhode Island's President's Award for "Outstanding Volunteer Service in the Community."

Her current volunteer efforts include director of the Citizen's Scholarship Foundation, of the Barrington Senior Center Foundation, of the Barrington Booster Club and of the Parks and Recreation Committee. She is also a Court Appointed Special Advocate (CASA).

O'Neill received a B.A. from Ladycliff College in New York. She lives in Barrington with her husband Stephen, and is the mother of three children.

Editorial Error

What's News apologizes for errors made in the June issue of the publication concerning the appointment of Anne Walsh Cain, Class of 1964, to head the Alumni Fund as honorary chair of this year's drive. Anne's last name was misspelled. In addition, the editor regrets the mistaken identity of Anne's husband's first name in the same article. Anne is married to longtime CNN Anchor Bob Cain, who many Rhode Islanders will remember as a news anchor for channels 10 and 12.



What's News

Alumni directory in verification phase

The telephone verification phase of the College's Alumni Directory, in which each alumnus can make final changes to his or her listing, is in progress according to representatives from Bernard C. Harris Publishing Company Inc.

The company asks thtmni interested in ordering a directory do so at the time of the call. The cost for the directory is \$59.99 (hard bound) or \$56.99 (soft bound). A handling charge of \$7.95 will also be charged. The directory is scheduled for distribution early next year.

If for any reason, you have not been contacted by a representative from Harris by Oct. 7, you may contact them directly at 1-800-877-6554.

School of Ed admissions sessions scheduled

Special orientation sessions will be held Thursday, Sept. 12 and Thursday, Sept. 26, for those interested in learning about admission requirements to the School of Education and Human Development and of program requirements of the Department of Educational Studies.

Information will be available about programs in secondary education and in K-12 programs in teacher preparation.

For more information, call the School of Education and Human Development at 401-456-8110.

RIC offers CEUs to social workers

Social workers who are licensed and who practice in Rhode Island are required to complete 30 continuing education contact hours every two years. At least three hours must be in the area of cross cultural practice to include the alleviation of oppression. In addition, at least three contact hours must be in the area of professional ethics.

All social workers licensed in Rhode Island will be required to have completed 15 contact hours by April 15, 1997, according to the RIC Continuing Education in Social and Human Services brochure.

Rhode Island College has several offerings that meet these requirements.

Workshops on sexual abuse, clinical and practice skills, social work practice and liability and ethical issues will be offered during the fall semester.

Call the Office of Continuing Education and Summer Sessions at 401-456-8091 for a brochure containing workshop descriptions, dates, fees and registration form.

Continuing Education in Social and Human Services is a joint project of the Rhode Island College School of Social Work and Office of Continuing Education and Summer Sessions.



HIGH ACHIEVER: Kari Cullen of Mt. Pleasant High School receives a certificate from Rhode Island College Upward Bound counselor Claudia Erazo-Conrad for high achievement during the program's summer session. Among Kari's accolades was "highest achiever in Portuguese." The awards ceremony was held Aug. 2 in Donovan Dining Center. (What's News Photo by Gordon E. Rowley)



R.I. ASSN. OF INSURANCE AGENTS' Steven Deware, Class of 1978 and association past president (right center), presents checks totaling \$10,500 in donations to Rhode Island College President John Nazarian in the President's Office June 18. The money is earmarked for the RIC Foundation Golf Day, the Adams Library Fund and the College's Risk Management Program. Others in photo from left are Theresa Safford, the association's director of risk management and insurance; Douglas Brown, association president; Marguerite Brown, RIC director of development and executive director of the foundation, and John Fitta, assistant vice president for finance and RIC controller.

To improve chemistry instrumentation and labs— NSF awards \$36,860 grant to RIC

The National Science Foundation has awarded a \$36,860 grant for a project that will improve instrumentation and laboratory facilities in chemistry, it was announced by Richard N. Keogh, director of Research and Grants



DAVID L. GREENE

Administration.

Project director David L. Greene, professor in the physical sciences department, said the money will go

mostly to up-dating computer software to a state-of-the-art level.

He said half of the funds will go to upgrading instruments such as the spectrophotometer by interfacing with fairly high-powered PCs and half to introduce molecular mechanics via computer simulations.

Thus, the project seeks to implement major changes in the manner in which computers are utilized in the undergraduate chemistry curriculum.

Recent developments in computer hardware and software have made data acquisition, data manipulation, and molecular mechanics calculations possible at an undergraduate level that were inconceivable 10

years ago, and too expensive to consider five years ago, according to the project summary.

This program provides a cost-effective model for the integration of computer technology into the chemistry curriculum of a medium-sized college, it stated.

Laboratories that will be most impacted by these additions include organic, physical, analytical and inorganic chemistry, instrumental analysis and the undergraduate research program.

Assisting Greene on the project were Charles J. Marzzacco, Marc C. Ertan-Lamontagne and James and Elaine Magyar, all of the physical

RIC, North Scituate School are partners in Apple grant program

by George LaTour
What's News Associate Editor

Rhode Island College and North Scituate School are among 10 "partners" selected nationally from 437 applicants in the Apple Computer Partners in Education (PIE) grants program this year and, as such, will share in a \$1 million grant designed to foster new, innovative ways to use technology in the classroom.

The program will benefit both North Scituate School and RIC, explains William J. Oehlkers, professor of elementary education, in that it will help develop technology use in the school, which has been an interest for them, while providing good teacher training for RIC.

Oehlkers says the RIC School of Education and Human Development has been talking with the North Scituate School people for two years in an Expanding Communities program.

Under this program, which is funded by the PIE grant, teachers at North Scituate School will restructure the learning environment through project-based cooperative learning activities that integrate third, fourth and fifth grades, as well as special needs students.

The focus of each project will be a community issue chosen by the class, building relationships with various local and state agencies. In-service and pre-service teachers will work in teams to enhance the classroom curriculum and develop ways to replicate these strategies in other schools, according to Apple.

Depending on the project, Apple will provide a variety of technologies to the 1996 grant recipients.

Additionally, five educators from each partnership attended an Apple-hosted two-week professional development retreat July 29-Aug. 9 to jump start their projects.

Teams will tackle issues such as integrating computer technology into student-centered learning environments; use of the computer as a multi-purpose tool; creating multimedia presentations, Web pages, publications, reports, etc., and determining how the partnership can benefit both participating institutions.

Oehlkers and James E. Davis, associate professor of educational studies, attended for RIC, and Jack Wright, principal, and Amanda Brown and Lisa Hanrahan LaRose attended for North Scituate.

This is the first time RIC has been selected to participate in the PIE program, now in its 17th year. Over this period, Apple has contributed \$28 million to schools in the program.

Oehlkers says the RIC-North Scituate partnership will get about \$12,000 the first year and over a two-year period maybe \$150,000 for equipment and everything. He stresses that this is "just a ballpark figure" on his part.

New RIC Foundation endowed scholarship established



SCHOLARSHIP ESTABLISHED: Pictured with President John Nazarian are Marie Tullie (left) and Edith Pascale, who recently established an endowed scholarship in the Rhode Island College Foundation for future teachers in memory of their sister, the late Dolores Palombo.

Anxious to shed those extra pounds? 'Why Weight?' —

MSW grad lost 155 lbs. and has kept it off!

by George LaTour
What's News Associate Editor

Why Weight? is a weight loss and relapse prevention program initiated by a 1994 master-of-social-work graduate from Rhode Island College after she had shed 155 lbs. starting some 10 years ago and managed to keep it off through a three-track approach — eating sound nutritionally balanced meals, regular exercise and “the psycho-social aspect” or discovering the reasons she over-ate in the first place.

Lauren P. Canuel of North Providence considers this third component the “most important” part, the one, once understood, that is the key to weight loss and overall well-being.

She says eating was her coping mechanism, food the drug she used to stifle the negative experiences of growing up in a “dysfunctional family where alcohol was present.”

By the time she graduated from high school she weighed 200 lbs. Eventually, her weight rose to 285 lbs. and then some — “my scale only went up to 285.”

Today, at age 31, she is a svelte 130 lbs. and says half jokingly “If I knew I was going to be this gorgeous, I would have dropped the weight a long time before I did.”

Talking with a reporter over a salad lunch recently at the Little Inn in Johnston, (the salad filling the spot in the reporter's innards usually reserved for chocolate-covered donuts), Canuel recalled her odyssey from becoming a big girl to that of a trim woman.

The youngest of three daughters of Donald and Jean Canuel of Fall River, she started to gain weight about age 8.

“I would eat when happy, when sad, when fearful, when lonely, whenever. I would eat to cope with the negative emotions I had.

“When the kids at school made fun of me, I ate more.”

Scale-busting 285 lbs.

By the time she was a 21-year-old senior at the University of Massachusetts, Amherst, she had risen to the scale-busting 285 lbs.

She recalls that she was always considered a happy, out-going person and strove to keep up the facade.

Then, one night she was dressing to go out with her friends “and found I couldn't hide my body.”

“I tried on all my black clothes and all the dark dark blue and nothing was hiding it. I was fat.

“I dropped down on a pile of clothes and sobbed.”

Getting ready to graduate with honors with a degree in education and human service administration, Canuel “knew I'd never be hired for a job. I was a disaster.”

“On Dec. 15, 1986, I decided to make changes, eat differently and lose weight.”



AT LEFT: BEFORE Lauren Canuel lost 155 lbs.

ABOVE: AFTER the weight loss, down to a svelte 130 lbs.



She signed up at the “Y” for a six-week course and found she was the fattest in the class. Additionally, she reports, she also suffered from hypertension.

At the end of a month, she had dropped 25 lbs.

Then she signed up for gym classes three days a week and lost 60 lbs. more.

New-found self esteem

With her new-found self esteem she felt “I was the most beautiful 200 lb. woman in the world. That confidence helped me get a job,” she relates.

That job was in a group home where she worked on problem solving and behavior management with adult schizophrenics, eventually rising to the position of assistant program

manager. “The clients all wanted my class because they heard I had done it, lost so much weight.”

Began grad studies

During this time Canuel began her graduate studies at RIC while also working for the Hoffmann Institute in Middletown, R.I., as a primary therapist and marketing consultant, doing some public speaking and providing outreach services for large corporations.

Upon her graduation from the MSW program at RIC, she was hired as a clinical social worker at the Rhode Island Hospital Child Development Center, a position she describes as “a good job.”

She also married David DeQuattro, an architect.

“If I knew I was going to be this gorgeous, I would have dropped the weight a long time before I did.”

manager.

By March 1989, she had lost another 45 lbs., leaving another 25 to go to reach her goal.

“I felt attractive, but I wanted to be done (with the weight loss process).

She went to Nutri/System Weight Loss Center in Seekonk for further assistance in her struggle.

“They told me losing weight is tough,” she relates with a chuckle. “I said, ‘Listen, lady, I just lost 130 lbs. so I know all about it.

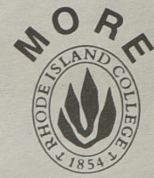
“They hired me on the spot as a part-time instructor,” Canuel relates with satisfaction.

She worked at Nutri/System for three years, seeing 75 to 100 clients a

week. “The clients all wanted my class because they heard I had done it, lost so much weight.”

Having begun her crusade for personal weight loss 10 years ago, and having reached her goal and maintained it, she now specializes in relapse prevention and long-term maintenance for her clients.

“People who were once overweight have a propensity to gain weight again, and only exercise, proper nutrition and changing negative thought patterns will keep it off,” assures Lauren Canuel, who can be reached at (401) 232-1884 if you'd like to discuss weight loss with her.



**What's
News**

Christopher J. Naylor Memorial Road Race set for Oct. 13

The first annual Christopher J. Naylor Memorial 5K Road Race is scheduled for Sunday, Oct. 13, at 10 a.m. at the Boat House at Roger Williams Park in Providence.

Naylor obtained his masters degree in psychology from Rhode Island College in May of 1995. In August, he married Linda Castagna and began applying to schools to obtain his Ph.D. He was working part-time at Intown Parking in downtown Providence.

On Dec. 20, 1995, while working, he was shot and killed during a robbery. He was 35 years old. The suspect was caught and is awaiting trial.

Proceeds from the memorial road race will go to Rhode Island College and the Community College of Rhode Island in the form of scholarships. Fund organizers Michael Naylor, Chris' brother, and friend Tommy Cocci, hope to “raise \$25,000 over the next few years to keep Chris' name and spirit alive.”

The entry fee is \$10 before Oct. 1, \$12 after. The first 200 entrants will receive t-shirts and all entrants will receive a raffle ticket for a \$200 gift certificate to Elmwood Sports. Cash prizes will total over \$1,000. The race is sanctioned by USA Track and Field. Walkers are also welcome.

For an entry form or to become a sponsor or make a donation, contact the Christopher J. Naylor Memorial Fund, c/o Intown Parking, at 401-273-9466.

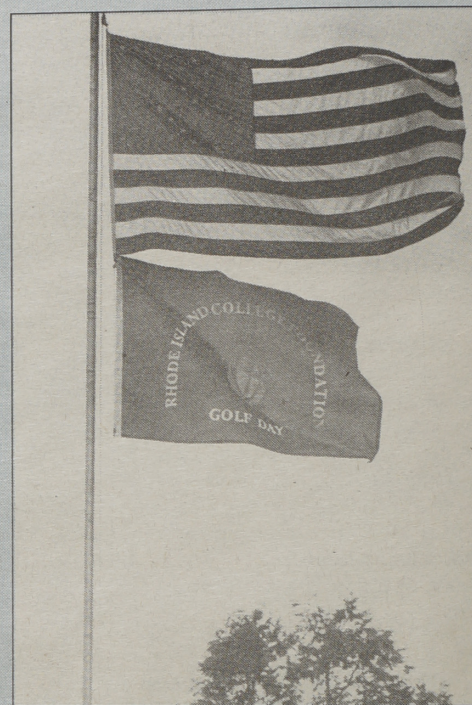
HBS teachers receive grant

Henry Barnard School's Mary Foye, associate professor (grade four) and Shirley Lacroix, assistant professor (music), have been recently selected as co-recipients of a research grant from the National Association of Laboratory Schools. Their research, entitled, “Does Music Instruction Improve a Child's Reading Ability?” will be conducted during the 1996-97 academic year at HBS.

This study will be conducted to determine the extent, if any, to which music can improve the reading ability of children. In September, children in grades three, four, five and six will be pre-tested. Based on the test results, the children will be divided into control and experimental groups. Through collaborative teaching, Foye and Lacroix will provide a group of children with additional integrated teaching with focus on music education and language arts.

This study will explore new ways of implementing the National Standards in the Arts as well as help meet the reading needs of children. The study will also investigate ways of integrating music in the reading curriculum.

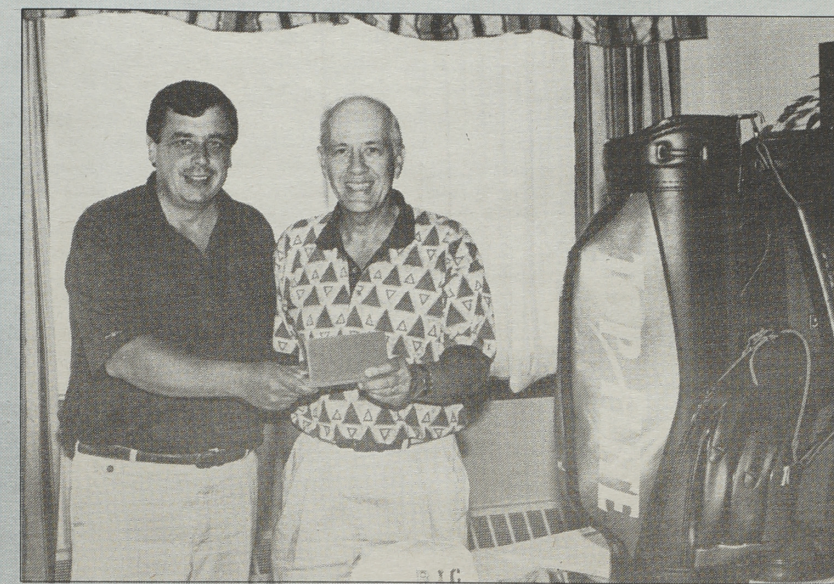
Foundation Golf Tourney a success!



The day was clear and sunny and the "golf flag" of the Rhode Island College Foundation flew over the Quidnessett Country Club on July 22, as the Foundation's annual golf tournament got underway.

At left, getting in a little putting practice beforehand, is state Senator Charles Walton. Below from left, making up a formidable foursome, are Ann McSherry McLaughlin, Class of 1952; Martha Lucia, Class of 1993; Mildred Brennan Nugent 1946; and Dorothy Burrows. At upper right (l and r), Norman Cotter, owner of Pine Valley Country Club and a major donor of prizes, looks over the prizes with John Fitta, RIC assistant vice president and controller. At right, Patricia Tondreau, one of the newest trustees of the RIC Foundation, and Foundation President Henry Nardone wish each other well, just before the shotgun start. And below right, some the sponsors of the event, who are also golfers, include (Darren Lopes of Fleet Bank, Joanne Mendes of the Miller Brewing Company, Steve DeWare of the R. I. Insurance Agents Association, RIC President John Nazarian, and Joseph Beretta Sr. of The Robinson Green Beretta Corp.

Photos by Gordon E. Rowley





SUMMER SCHOLARS in the Rhode Island College Preparatory Enrollment Program receive certificates of high achievement from PEP director Joseph Costa. From left are Gabriel Alvarez of Central Falls, Silvia Borges of Cumberland, Costa, Andrey Nakhlis and Jackie Fontes of Pawtucket. The awards ceremony, which marked the conclusion of the PEP summer session, was held July 31 in the College's Gaiage Hall auditorium.

Feinstein gift

Continued from page 1

by focusing on children and on education. The concepts of the Feinstein Enriching America Program, focused on public and community service as an integral part of every student's learning experience, will be integrated into the curriculum of the School of Education and Human Development as it re-focuses and refines its program offerings.

This is the second major contribution made by the Feinstein Foundation to a program at Rhode Island College. Two years ago, the Foundation awarded \$500,000 in start-up funds to permit the joint RIC/URI Ph.D. program in education to enroll its first class of students. That program is now in its second year.

Bond issues

Continued from page 1

and CCRI with 3-port outlets to accommodate telephone, data transmission and fiber optic cables. The College would receive 3,600 outlets.

Phase II includes installation of digital-based communications switches to permit increased capacity, high-speed modem calling, and voice mail. Essentially, a new phone system for the College, the President reported. In addition, satellite receivers and distribution equipment would permit full-motion interactive video permitting teleconferencing, and about \$11 million for 3,122 new computer work stations to be apportioned among the three institutions.

If voters approve Referendum #3, Rhode Island College will construct "a much needed and long-awaited for" \$9.5 million Performing Arts Classroom Facility. The 50,000 square foot structure would house the College's performing arts programs of music, theater, and dance, and include classrooms, faculty offices and a variety of rehearsal, practice and performing spaces.

In addition, the project calls for a 200-300 seat performance space and the renovation of Roberts Hall, built in the mid-1950s to serve 1,000 students. (The College's enrollment is around 9,000 students)

President Nazarian called the project the College's "highest priority. Rhode Island College is recognized as an academic leader in the performing arts, and we are very much overdue for a facility that approaches the excellence of our faculty."

Robert Elam, chair of the newly combined Department of Performing Arts/Music/Theater/Dance, said, "The quality of our teaching is greatly affected by the lack of a physical facility that would allow us to reach our full potential as the location of Rhode Island's performing

arts." Emphasizing the "dire" need for the facility, the department notes that over 2,500 people annually register for a performing arts course, and more than 30,000 people are drawn to an arts event at the College each year.

Referendum #3 also includes some \$14.5 million for the Community College of Rhode Island to construct an 85,000-square-foot addition to the Knight Campus in Warwick, and \$9.8 million for renovation and new construction work on three buildings at URI: Green, Ranger and Ballentine Hall.

The President also announced the formation of a campaign team organized among the three institutions and the Office of Higher Education to coordinate marketing, media relations and fundraising efforts. He said, "we want to make sure that you have whatever you need to help make this a successful campaign."

According to committee members, the selected campaign slogan is (VOTE SMART Nov. 5: 2+3 = A Brighter Future for Rhode Island)

In noting that all monies used to promote the campaign must come from private sources, the President said, "we will be calling upon financial support from the College Foundation, the Alumni Association, and Student Community Government, and will be seeking help from the unions and from other private sources."

Office of Higher Education Commissioner Stephen T. Hulbert, who attended and spoke at the convocation said, "My office and the Board of Governors will support all that is needed that supports our students. I ask you to join all of us and come together and talk about the value of the passage of the referenda and what they will do for our state and its citizens. Let us join together in serving Rhode Island."

Opening convocation

Continued from page 1

the services we provide. I will be an advocate for higher education...to get the word out to the public as to what we have accomplished."

The President thanked Hulbert for joining in the opening convocation and went on to report on a number of College-wide accomplishments and items of interests. Among those included:

- the full implementation of the General Education 2000 Program this year
- the 30th anniversary of the "very successful" Upward Bound Program
- the continuation of the work of the Dialogue on Diversity Committee
- the permanent reorganization of the Center for Management and Technology to incorporate the departments of economics and finance, management and technology, and accounting and computer information systems
- the formation of a Department of Performing Arts, on a two-year trial basis, combining theater and dance with the music department
- the construction of all-new tennis courts

•building improvements to meet ADA standards on doorways, elevators, and restrooms

•the expectation of three DCYF buildings on the East Campus to become available to the College during the next year, with all buildings vacated within two years (The President noted that an announcement concerning the use of one of the buildings would be made within the next two months.)

•the near completion of Phase II of the Campus Mall Project

•state funding of \$1.5 million for asset protection in addition to the system-wide budget for FY97 at \$31.2 million

•RIC to receive \$955,000 of a \$2.6 million loan from the Rhode Island Health and Education Building Corporation - authorized by the Board of Governors - for the purchase of technology and computer equipment and software to be paid back over five years

Referring to the continuing fiscal problems of the state and paraphrasing a popular 1930's political slogan that "prosperity is not just around the corner," the President called on the community to "continue to remain steadfast in our struggle to maintain quality academic programs at a price that students and their families can afford."

In reviewing this year's budget, he said, "this is an extremely tight budget, but one with which I believe we can maintain our standards, so long as we spend each dollar as if it were money out of our own personal checking accounts." The President reinforced the "the need for the college to re-focus and re-design its curriculum," reminding the community to continue discussion within their departments and to report their findings to appropriate vice presidents.

He announced that recently passed legislation by the General Assembly "delegates authority to the College and the system of higher education to pay their own bills." Spontaneous applause rang out when the President said that Donovan Dining Center will begin to pay vendor bills issued by the College. In addition, he reported that third-party funded operations, "including grant-sponsored and auxiliary operations will undertake procurement without going through the state purchasing."

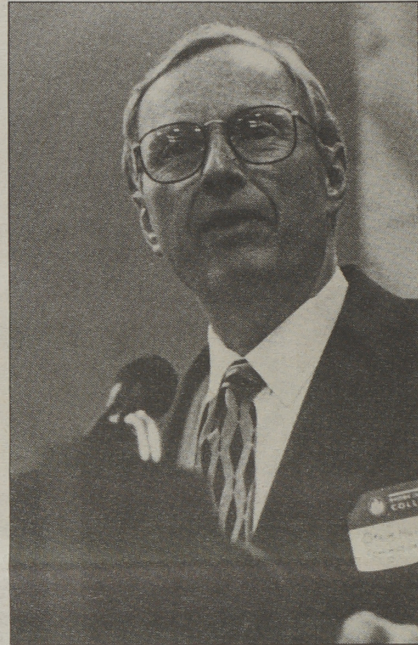
"I do want to mention that this year's budget, for the first time in many years, does not reflect a tuition increase," he said. "This will help to keep our programs within reach of more of our students and their fami-

lies."

In remarks about this year's first year incoming students, the President said the profile includes "more minority students, more out-of-state students, and more College Honors Program students." Remember, he said, "student recruitment and retention is a responsibility of every one of us." By the end of add-drop period, the College expects to have enrolled about 9,000.

Both the President and Hulbert spoke about the importance of the passage of the system-wide higher education bond issues approved by the General Assembly to be placed before the voters for their approval at the general election on Nov. 5.

(see related story this page)
"The first bond issue is for the \$41 million higher education telecommu-



COMMISIONER OF HIGHER EDUCATION
STEPHEN T. HULBERT

nications initiative, of which the College's share would be \$7.6 million," he said. "The money would be used to initiate and upgrade telecommunications systems at RIC, URI, and the Community College of Rhode Island enabling the campuses, students, and public to tie into the world through state-of-the-art computer technology. Specifically for RIC, the President said, the money would mean a new phone system, access to teleconferencing and new computer work stations.

Explaining that the legislature "understood how eight years of progressively tighter budgets had taken a toll on crucial capital projects, they brought forward another bond issue for \$34 million for projects listed by the Board of Governors as their highest facility priorities."

Besides an addition to the CCRI Warwick campus and rehabilitation and reconstruction of three buildings at URI, "the bond issue provides \$9.5 million for the College's highest priority - our long sought-after Performing Arts Classroom Facility. The College is recognized as an academic leader in the performing arts and we are very much overdue for a facility that approaches the excellence of our faculty."

What the legislature gave us," he said, "is but an opportunity, and we - each of us - must capitalize on that opportunity."

Hulbert said his office, the Board of Governors, and representatives from the three institutions have "already begun a campaign to build public awareness of the bond issues."

Both CEO's asked that the RIC community join together in this effort to ensure passage on Nov. 5. "Public education serves Rhode Island first," Hulbert said.

RIC Athletics



DONALD E. TENCHER

*director of intercollegiate athletics, intramurals
and recreation*
456-8007



Fall student-athletes get head start on season!

While many people were still enjoying the beach and other summer activities student-athletes who will be representing Rhode Island College on Fall athletic teams were already back on campus preparing for the season ahead. This latter part of the August pilgrimage represented double session workouts for over one hundred student-athletes, coaches and support personnel. Men's and women's soccer, women's volleyball, men's and women's cross country, women's tennis and cheerleading are back working hard. Here's what's ahead:

Women's Soccer What a difference a year makes. The women's soccer program in just its second season has doubled the number of student-athletes trying out for a spot on this year's roster. Second-year head coach Nicole Barber and assistant Joy Woog are relying heavily on a solid group of returning veterans combined with a talented class of freshmen and transfers. The ladies kick-off their season on September 7th with a weekend tournament at Roger Williams University.

Men's Soccer Coaches John Tomlinson and Steve Froberg have been walking around campus for months in anticipation of this season. This could be the year that Coach Tomlinson's squad makes a run for the Little East Title. The returnees to watch are All-Conference selection Erik White and All-Conference Rookie of the Year Rui Dias. Freshmen Pete Gallo (RI All-Stater) and Tom Jenkins (four-year starter at Portsmouth HS) will get plenty of playing time. URI transfer David Lisker and South Carolina transfer Jeff Lavigne look to be immediate impact players. The team will open its season on Sept. 7 at the Curry College Invitational.

Women's Volleyball Coach Kris Norberg could have one of the most talented teams in her coaching tenure at RIC. A solid group of veterans combined with a very talented group of freshmen could spell SUCCESS for the Anchorwomen. Only time will tell but if the pre-season workouts are any indication of what lies ahead this could be a very interesting and exciting season. Coach Norberg is assisted by Valarie Bosticco. The team will open its season at the Springfield College Invitational on Sept. 6.

Women's Cross-Country Matt Hird, the elder statesman of the RIC coaching staff, will once again be at the helm as his harriers start another season. This year's team will be lead by captains Valarie

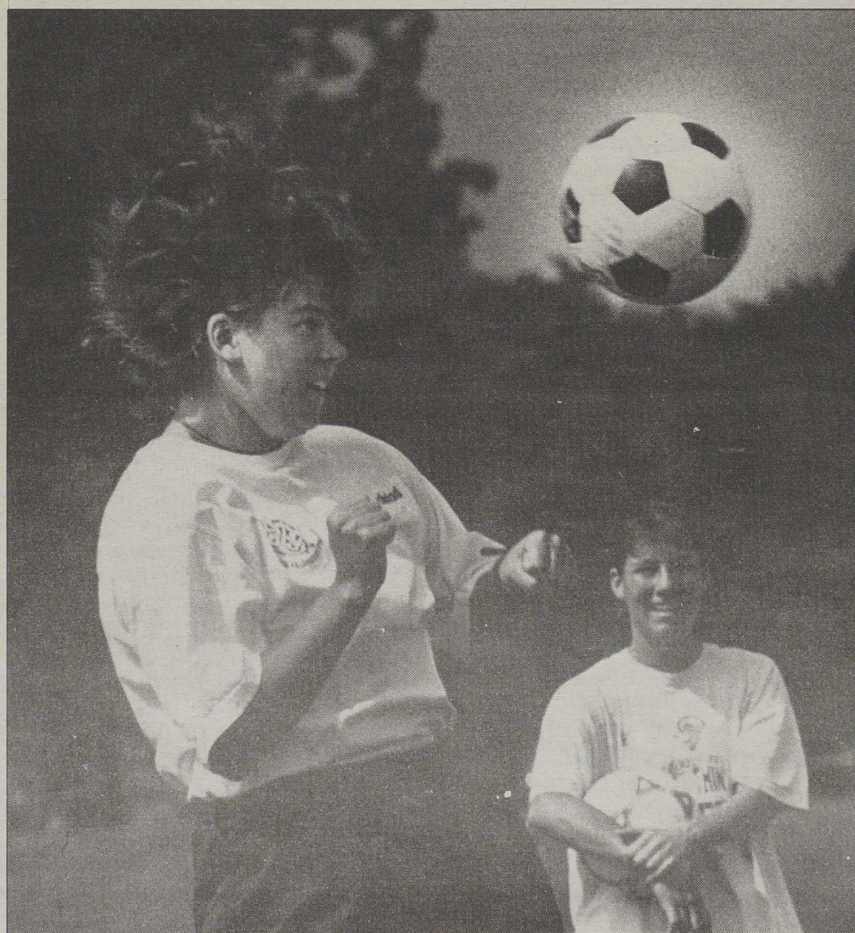
Verducci and Michelle Capobianco. Coach Hird expects great things from these two veterans. A solid group of veterans plus a number of talented newcomers could be the combination this squad has been looking for. Coach Hird and his team will open their season at Stonehill College on Sept. 6.

Women's Tennis The pressure is on Coach Dick Ernst and his team as they attempt to bring home the Little East Championship that they have had the lock on for many years. Last year's team was extremely talented and many of the returnees have considerable amount of playing time that will help in setting the pace for the new players. Over the course of the summer, thanks to

President Nazarian's efforts, the ladies will have a tennis facility befitting the their talents and efforts. The team will open its season against Stonehill College on Sept. 12.

Men's Cross-Country The 1996 season will be one of rebuilding for Coach Buddy Kane. Only two returnees will be back from last season's squad, so the impetus will be to cultivate the incoming freshmen to build a solid foundation for the future. There is some talent on this team and as the freshmen mature anything can happen. Stay tuned as they open their season at Bryant College on Sept. 14.

Fall sports season begins!



HOW IT'S DONE: Women's head soccer coach Nicki Barber demonstrates how to head the ball during soccer practice a few days before classes began. (What's News photo by Gordon E. Rowley)

Baseball/ Softball Alumni Golf Tourney Oct. 6

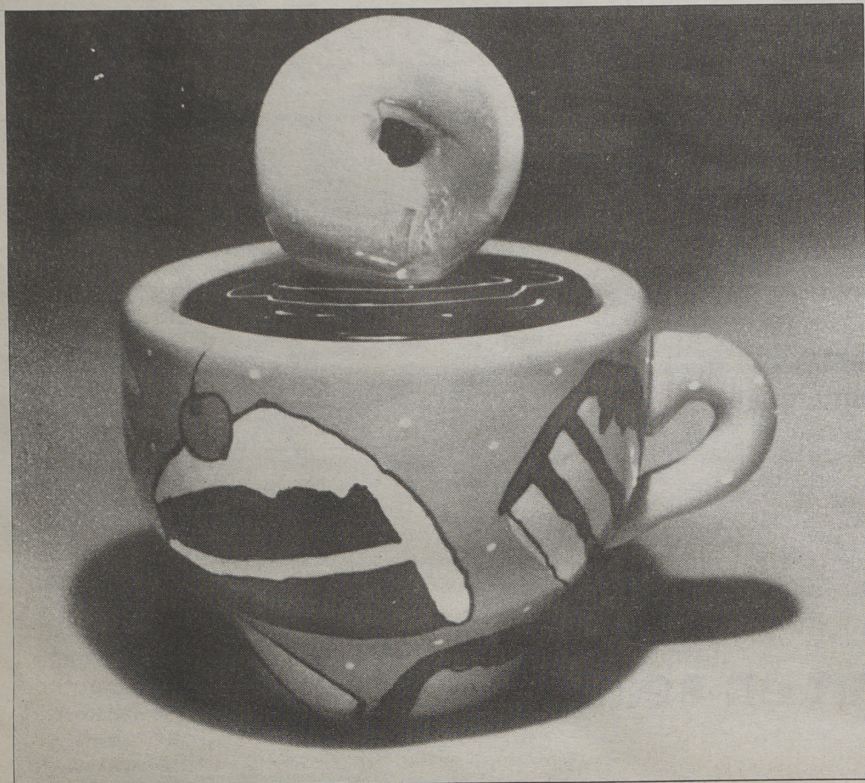
The first annual Rhode Island College Baseball/Softball Alumni Golf Tournament will be held Sunday, Oct. 6 at Firefly Golf Club in Seekonk, Ma.

This tournament is being run as a fund raiser for the RIC baseball and softball teams and is open to all alumni and anyone else interested.

Tee times will begin at 8 a.m. Call Don Tencher at 401-456-8007 for information and entry forms.

**Watch
upcoming
issues for
athletic team
scores!**

Department Chatter The Rec Center is open for business with plenty of activities for the RIC community as well the community-at-large.....RI'sC outstanding gymnastic Coach Dick Stapleton was selected by his peers as the National Division III Coach-of-the-Year....RIC athletics was selected over Rutgers University to host the 1997 USA Gymnastic Compulsory Workshop in June.....In addition to the new tennis facility, President Nazarian has given his approval to resurface the track, and thanks to the Student Community Government the baseball and softball teams will soon have dugouts....RIC athletics hosted its first summer of sport's camps and a great time was had by all....We want to wish good luck to former SID Ed Vallaincourt as he ventures out into the business world and thank him for his years of service....On a sad note, we extend our deepest sympathy to the family of Nathalie Price who was an outstanding athlete, teacher, alumnus and person who passed away last spring. She will be missed.



EXAMPLE OF WORK of Joanne and Dennis DeLomba of Cranston. Joanne trained as a sculptor and painter; Dennis studied sculpture, ceramics and drawing. Both are RIC grads.

Bannister Gallery fall/winter exhibits —

To feature Art Alumni Invitational; Jim Goldberg's photos on runaways, 'Raised by Wolves'

Bannister Gallery in the Rhode Island College Art Center will showcase four exhibits in its fall/winter program, including selected works from RIC art alumni and the striking "Raised by Wolves: Photographs and Documents of Runaways" by Jim Goldberg.

Other exhibits scheduled are Keith Long's "Wall Sculpture" Nov. 7-27 and James Janecek's "Recent Pictures" Dec. 5-21.

The Art Alumni Invitational Sept. 12-Oct. 6 draws from among the many alumni now leading lives centered in artistic activity.

On Thursday, Sept. 19, at 7 p.m. in the gallery a talk entitled "Paths in the Field" with Jay Lacouture of Salve Regina University will be held offering a discussion on the life and career paths of RIC art alumni.

The exhibit opening is Thursday, Sept. 12, from 7-9 p.m. A closing reception will be held Sunday, Oct. 6 from 1-3 p.m.

The exhibit is free and open to the public.

As a focal point for this year's College October Series, "Children in the Street," Bannister Gallery will present a powerful exhibition of photographs and mixed-media works by artist/photographer Jim

Bannister Gallery will showcase four exhibits in its fall/winter program, including selected works from RIC art alumni

Goldberg Oct. 10-Nov. 2 entitled "Raised by Wolves."

The opening on Oct. 10 will be from 7-9 p.m. Between 1986 and 1993, Goldberg gradually entered the underworld of runaways and street kids in San Francisco and Los Angeles, eventually bringing this world into view through a series of gritty but compassionate photos, video, texts and artifacts.

These images and objects, combined with writings by the runaways, expand the traditional boundaries of documentary photography and urge the viewer to confront the reality faced by homeless children.

The exhibit is free and open to the public. Regular gallery hours are Tuesday through Saturday, 11 a.m.-4 p.m. and Tuesday and Thursday evenings from 6-9. For further information on up-coming exhibits watch for articles in *What's News* or call O'Malley at 456-9765.

Goldberg Oct. 10-Nov. 2 entitled "Raised by Wolves."

The opening on Oct. 10 will be from 7-9 p.m.

Between 1986 and 1993, Goldberg gradually entered the underworld of runaways and street kids in San Francisco and Los Angeles, eventually bringing this world into view through a series of gritty but compassionate photos, video, texts and artifacts.

These images and objects, combined with writings by the runaways, expand the traditional boundaries of documentary photography and urge the viewer to confront the reality faced by homeless children.

The exhibit is free and open to the public.

Regular gallery hours are Tuesday through Saturday, 11 a.m.-4 p.m. and Tuesday and Thursday evenings from 6-9. For further information on up-coming exhibits watch for articles in *What's News* or call O'Malley at 456-9765.

From soloists to quintet, Chamber Music Series offers jazz to classical

Seven entries in the Rhode Island College Chamber Music Series this fall will offer a range of music from solo jazz violinist Mireille Proulx to the classical renditions of the Ariel Quintet.

All performances are at 1 p.m. in Roberts Recital Hall 138. Members of the College community and community at-large are invited to attend free of charge.

Opening the season on Sept. 25 will be the voice-and-piano music of adjunct music faculty member Richard Cumming with performances by mezzo-soprano Georgette Ross Hutchins and baritone Rene De La Garza. Cumming will accompany on piano.

Jazz violinist Proulx, who comes from Montreal, will perform both classical and her own jazz compositions on Oct. 9.

The Lydian String Quartet will perform contemporary music and standard quartet repertoire on Oct. 23.

The Ariel Quintet, comprised of New England Conservatory graduates and recipients of artist's diplomas from the Longy School of Music, will perform Oct. 30.

The Jubilee Trio will present a program of vocal music entitled "The Great American Songbook: African-American Composers and Classical Song" on Nov. 13.

Concert and oratorio soloist D'Anna Fortunato, who has appeared internationally with the Chamber Music Society of Lincoln

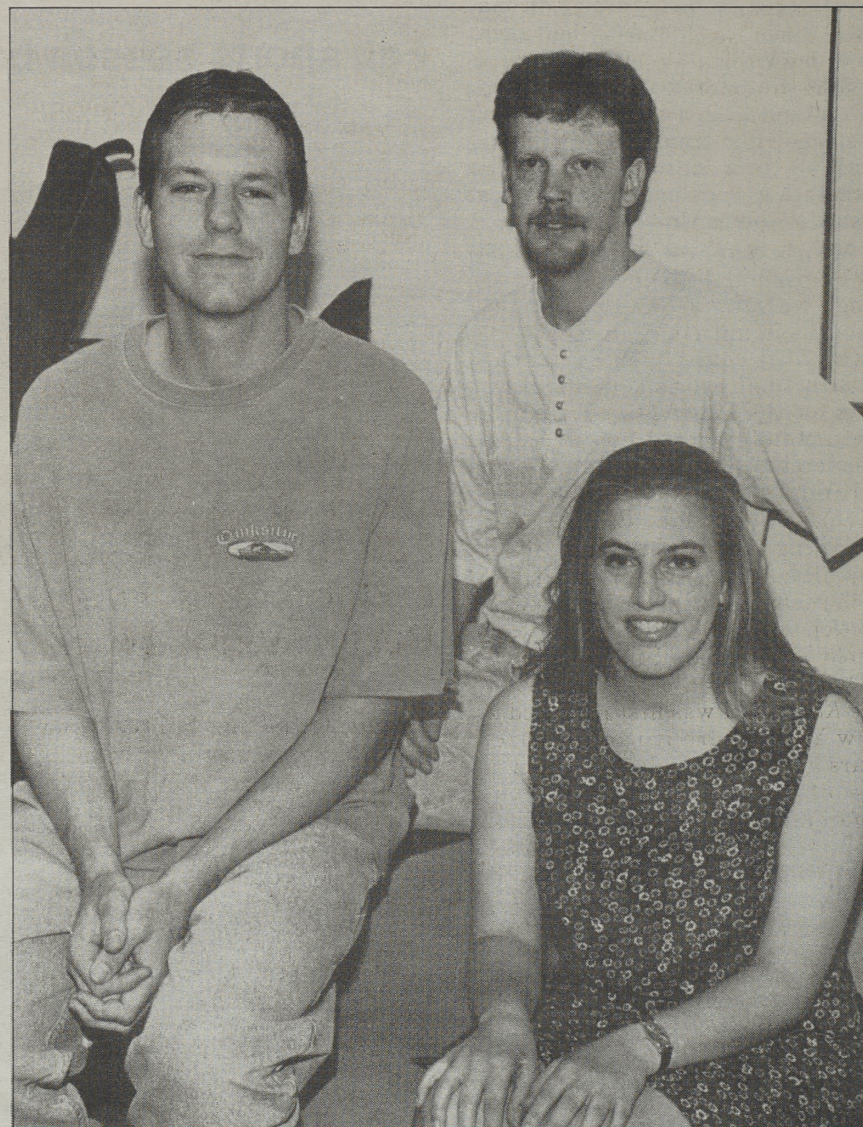


PIANIST RIEKO AIZAWA WILL PERFORM DEC. 11

Center, will perform Nov. 20. She has researched and performed extensively the little-known vocal works of Franz Liszt and Charles Loeffler as well as those of women composers such as Clara Schumann, Fanny Mendelssohn and Amy Beach.

Pianist Rieko Aizawa, who has appeared at Tokyo's Casals Hall and the Kennedy Center, will perform Dec. 11.

Up-coming issues of *What's News* will feature details on each performance. John Pellegrino is series coordinator.



MOVIE INTERNS last spring with the Fox Point Film Company are (l to r) Gary Stevens of Bristol, Russell Bowden of Cumberland and Tracy Valenti of Johnston, all film studies majors. Not pictured is a fourth intern, Evan Pimental of Coventry, a communications major. The Rhode Island College seniors worked as wardrobe and production design assistants from April 29 to June 7 while the company was shooting the film *Code of Ethics*. Set in Rhode Island, the low-budget suspense thriller is due for release in October.

RIC Theatre promises a solid season of stage hits

Three plays, the annual Spring Dance Concert and a blockbuster musical will be staged this season by Rhode Island College Theatre.

William Inge's *Picnic*, the first entry of the season, will run Oct. 3-6; Luigi Pirandello's *Six Characters in Search of an Author* will run Nov. 14-17; Agatha Christie's *The Mousetrap* is Feb. 20-23; the annual spring dance concert is March 6-9, and the traditional end-of-season musical, Rodgers and Hammerstein's *The King and I*, will run April 24-27.

All evening performances are at 8 o'clock and Sunday matinees at 2 in Roberts Hall auditorium.

Picnic tells the story of a not very bright college football player, turned tramp, who arrives in a small Kansas town on a hot Labor Day and causes complications in the lives of a handful of women who find themselves attracted and repelled by the ruggedness of a crude kind of masculinity they had never encountered before.

Written by Inge immediately after his first stage success, *Come Back, Little Sheba*, which was later made into a movie, *Picnic* scored a great hit when first presented in New York in February 1953. It ran there for 61 weeks and won the Pulitzer Prize, the Drama Critics' Circle Award, the Outer-Circle Award and the Theatre Club Award as being the best play of the year.

One of the few plays of the early 1920s that has continued ever since to seem timely to American audiences, *Six Characters in Search of an Author* is the imaginative drama of a fictional family who rebel when an author drops their story and insists that it be carried on to its harrowing conclusion.

Generally considered a modern classic, the play's appeal has been so constant that it was produced seven times in New York up to 1965. One New York critic commented in 1963 that this was an "avant garde" play long before the phrase was invented.

The Mousetrap, the most successful mystery melodrama ever written by Agatha Christie, the creator of the famous Hercule Poirot, takes place in a rather lordly manor house in rural England, which an habitually penniless young couple, upon inheriting it, have decided to run as a small hotel. As the guests arrive, each seems to have a possible connection with a London murder that is told of over the radio.

Described as a musical drama, *The King and I* was first produced in New York where it ran for three years and has since been ranked as one of the masterpieces of the Rodgers and Hammerstein canon along with *Oklahoma!*, *Carousel*, *South Pacific* and *The Sound of Music*.

The setting is Siam in the year 1860, where the proud king of the country has brought an English widow, Anna Leonowens, to serve as tutor of the children he has fathered with his many wives. Against the exotic background of this Oriental nation, the story is related of how the tutor's most interested pupil eventually turns out to be the king, himself.

Watch subsequent issues of *What's News* for more details on each performance.

RIC Performing Arts Series —

Offers a potpourri of performance plus series with Muir Strings



The theatre mask ensemble IMAGO will perform March 11.

Tibetan song and dance, Australian ballet, Flamenco dance, juggling as art, and human animation comprise a potpourri series in the Rhode Island College Performing Arts Series this season.

Added to that is a return performance series by the Muir String Quartet.

All performances in the potpourri series are in Roberts Hall auditorium at 8 p.m.; all Muir String performances in Gage Hall auditorium at 8 p.m.

Reserved seat tickets are \$18 with discounts for students and senior citizens.

The Tibetan National Song and Dance Ensemble from the snow fields of China will offer a taste of Tibet in its Thursday, Oct. 17, appearance. The 60-person ensemble was established to perform the three major

styles of traditional Tibetan music, dance and theater.

The Queensland Ballet, Australia's longest established professional dance company, will perform Monday, Nov. 25, offering the first ballet version of the *Pirates of Penzance* ever created.

The high-energy improvisations of singer, guitarist and dancer are the focus of Maria Benitez Teatro Flamenco. Featuring solos, duets and trios, the dynamism of flamenco foot and body work is non-stop in its Monday, Dec. 2, appearance.

International performance artist Michael Moschen brings his one-man-juggling-as-balletic-art show to the stage Saturday, March 1.

The theatre mask ensemble, Imago, will take the audience on a voyage to a world of live human ani-

mation where fantasy and ultra-realistic illusion are featured in its Tuesday, March 11, performance.

Returning to RIC for the fourth consecutive season, the Muir String Quartet will perform on Mondays, Sept. 30, Nov. 4, Feb. 10 and April 7.

The works of Bartok, Schubert, Ravel, Haydn and Brahms will be featured.

Guest performer for the Feb. 10 show will be Hsin-Yun Huang, violist of the Borromeo String Quartet, and for the April 7 performance, Bayla Keyes, formerly of the Muir Strings, and Yeesun Kim, cellist of the Borromeo Strings.

Further details on each upcoming performance will be published in *What's News*. For additional information, call 456-8194.

Fall RIC Dance schedule to feature collaboration with Paula Josa-Jones Performance Works

Paula Josa-Jones fall residency and performance project with the Rhode Island College Dance Company "will provide our community with an opportunity to experience work by this important New England artist," according to Dante Del Giudice, RIC dance director.

The project will run from Nov. 2 to Dec. 6 and involve Josa-Jones in residency activities that will result in a new commission created for the RIC Dance Company.

Dancers from throughout the community will have an opportunity to experience Josa-Jones' process during nine open company classes.

Open classes will be conducted Nov. 2, 3, 9, 10, 11, 16, 17, 23 and

24 from 10-11:30 a.m. in the Recreation Center Annex. Admission is \$6 per class.

Activities will culminate in two shared performances in Roberts Hall auditorium featuring Paula Josa-Jones Performance Works and her latest commission to be performed by the RIC Dance Company.

An informal concert for Rhode Island school children is set for 10 a.m. on Thursday, Dec. 5, and a formal performance at the Dec. 6 winter concert at 8 p.m. will again feature both companies performing works by Josa-Jones.

General admission to the winter concert is \$10 with discounts for senior citizens, students and groups.

Two concerts slated for fall season

Rhode Island College Symphony Orchestra with John Sumerlin on violin and Judith Lynn Stillman on piano will perform Mendelssohn's Concerto for Violin, Piano and String Orchestra in D Minor under the baton of Edward Markward in a Monday, Oct. 21, concert in Roberts Hall auditorium starting at 8:15 p.m.

Also on the program will be Wagner's "Elsa's Procession to the Cathedral" (from *Lohengrin*) and Hindemith's *Mathis de Maler* Symphony.

On Monday, Dec. 9, also at 8:15 p.m. in Roberts auditorium, the RIC Chorus and Symphony Orchestra will perform Ernest Bloch's *Sacred Service* (*Avodath Hakodesh*) and Richard Cumming's *Christus*, which was commissioned by the RIC Chorus. Baritone Rene De La Garza will be featured.

Tickets are \$7 for these concerts with discounts for senior citizens and students. For more information, call the RIC music department at 456-8244.

RIC CALENDAR

SEPT. 9 - 23

Tuesdays

Noon—*Interfaith Bible Study*. The Chaplains' Office offers interfaith Bible study on Tuesdays beginning Sept. 10 in the SU 300. Bring your lunch with you and join us for an informal discussion. Come anytime. All are welcome!

Wednesdays

12:30 to 2 p.m.—*Catholic Student Association*. The Chaplains' Office offers a Catholic Student Association on Wednesdays beginning Sept. 11 in the SU 300. Food and drinks are provided. Come anytime. All are welcome!

Sept. 12-Oct. 6

Art: RIC Art Alumni Invitational. Opening Monday, Sept. 9, 7 to 9 p.m. in the Bannister Gallery.

9 Monday

8 p.m.—*New Music Night in the Coffeeground*. Free. Sponsored by RIC Programming, 456-8045.

11 Wednesday

12:30 to 2 p.m.—*Student Organizations Day* outside the Student Union featuring Professional Pests. Sponsored by Student Activities, 456-8034.

12 & 19 Thursday

Snorkeling. Pool sessions-Sept. 12 & 19/6:30 to 8 p.m.; outdoor session-Sept. 21/10 a.m. to 2:30 p.m.\$5 with RIC student ID. Call for details. Sponsored by RIC Rec Center Aquatics, 456-8227.

14 Saturday

Trip to Martha's Vineyard. Bus leaves SU at 8 a.m. and returns at 8 p.m. \$8 tickets at SU Info Desk. Includes transportation and ferry ticket. Sponsored by Student Activities, 456-8034.

16 Monday

8 p.m.—*New Music Night in the Coffeeground*. Free. Sponsored by RIC Programming, 456-8045.

18 Wednesday

8 p.m.—*Casino Night with the Psychic Madman* in the SU Ballroom. Free. Win raffle tickets for 13" color TV, genesis system and more. Sponsored by RIC Programming, 456-8045.

8 p.m.—Film: *12 Monkeys* starring Bruce Willis and Brad Pitt. HM 193. General admission \$2, RIC students \$1.

19 Thursday

7 p.m.—*Art: "Paths in the Field,"* an informative discussion on the life and career paths of RIC art alumni, led by Jay Lacouture, Salve Regina University. Bannister Gallery.

21 Saturday

Trip to Six Flags Great Adventure Park. Bus leaves SU at 7 a.m. and returns to RIC at midnight. \$25 with ID/\$35 without. Tickets sold at SU Info Desk at 9 a.m. on Sept. 11.

28 Saturday

Retreat. There will be a day retreat for first year students held off campus. The cost, which includes lunch, is \$2. Register by Wednesday, Sept. 25. For more information, contact Jim Montovan at 456-8168, Student Union 300. Sponsored by RIC Programming, 456-8045.

23 Monday

8 p.m.—*New Music Night in the Coffeeground*. Free. Sponsored by RIC Programming, 456-8045.

Sports Events

11 Wednesday

4 p.m.—*RIC Men's Soccer* at Salve Regina University.
7 p.m.—*RIC Women's Volleyball* at Eastern Connecticut State University.

12 Thursday

3:30 p.m.—*RIC Women's Soccer* vs. University of Mass-Dartmouth. Home.
3:30 p.m.—*RIC Women's Tennis* vs. Stonehill College. Home.

14 Friday

10:30 a.m.—*RIC Women's Tennis* vs. Rutgers University-Newark. Home.
Noon—*RIC Men's Cross Country* at Bryant College Invitational.
1 p.m.—*RIC Women's Soccer* vs. Emerson College. Home.

17 Tuesday

3:30 p.m.—*RIC Men's Soccer* at Eastern Connecticut State University.
4 p.m.—*RIC Women's Soccer* at Roger Williams University.
7 p.m.—*RIC Women's Volleyball* at Johnson & Wales University.

19 Thursday

3:30 p.m.—*RIC Women's Tennis* vs. Salve Regina University. Home.
7 p.m.—*RIC Women's Volleyball* vs. Worcester Polytechnical Institute. Home.

21 Saturday

10 a.m.—*RIC Women's Tennis* at Grasscourt Doubles Tournament. Host: Salve Regina University. Site: Newport Casino.
11:15 a.m.—*RIC Men's Cross Country* at University of Mass-Dartmouth.
Noon—*RIC Men's Soccer* vs. Plymouth State College. Home.
Noon—*RIC Women's Cross Country* at University of Mass-Dartmouth.
1 p.m.—*RIC Women's Soccer* at Worcester State College.
1 p.m.—*RIC Women's Volleyball* at Keene State University.

23 Monday

3:30 p.m.—*RIC Women's Tennis* vs. University of Mass-Boston. Home.

The Rhode Island College Alumni Association

6th Annual Golf Day

Monday, Sept. 30, 1996
Cranston Country Club



Schedule

Noon Registration/check in
1 p.m. Shotgun start
5:45 p.m. Cash bar and hors d'oeuvres
6:45 p.m. Dinner

Registration fee of \$65 entitles one to green fees, golf cart, favor and dinner and prizes. A raffle (\$10) will also be held.

And...Nevada Bob's of Seekonk is back for a 6th year with a new set of Tommy Aaron clubs for a hole-in-one on any par 3!

Those who don't golf can support the Alumni Association RICochet Fund, which provides emergency financial assistance to RIC students, by sponsoring a tee for \$100. Tee sponsors get a tee sign on the courses and program listing. Corporate sponsors (\$500) receive sign, listing and complimentary twosome. Major Sponsors (\$1,000) receive sign, listing and complimentary foursome. For \$25, supporters can attend dinner only.

Call Cheryl Precopio at the Alumni Office at 401-456-8086 to register or for more information.

Registration is due by Sept. 16 and is limited to the first 144 paid registrants...so register today and join us for a fun day of golf, prizes and surprises!