

# WHAT'S NEWS

AT RHODE ISLAND COLLEGE

Vol. 17 Issue 3

Circulation over 38,500

Oct. 7, 1996

*Dagle, Avissar, Schiller cited —*

## Distinguished faculty in Arts & Sciences named

by George LaTour  
What's News Associate Editor

Three members of the Faculty of Arts and Sciences at Rhode Island College have been cited respectively for their distinguished contributions to the institution through teaching, scholarship and service.

Joan C. Dagle of Providence, a professor of English, was named the 1996 Paul Maixner Distinguished Teacher; Yael J. Avissar of Providence, an associate professor of biology, the 1996 Mary Tucker Thorp Professor for "sustained scholarship contribution" to his discipline, and Barry Schiller of North Providence, an associate professor of mathematics, the 1996 Patrick J. O'Regan Distinguished Service Award.

Announcement of their selections came from Dean Richard R. Weiner at the opening meeting of the Faculty of Arts and Sciences Aug. 29 in Clarke Science lecture hall in a program that included welcoming remarks by John J. Saleses, vice president for academic affairs, and Robert L. Cvornyek, assistant professor of history, and musical selections by Mychal Gendron, guitarist and adjunct instructor of music.

In his opening remarks, Dean Weiner focused on what he described as the "pervasive attitude of 'whatever' that is characteristic of our time" and the faculty's "need to con-

front this and build habits of responsibility in our students" in a talk entitled "Making a Virtue of Necessity?: Facing up to a 'Whatever' Generation."

### To give lectures

Dagle and Avissar, as winners of the Maixner and Thorp awards, will give formal lectures in the winter/spring at sites and times to be announced.



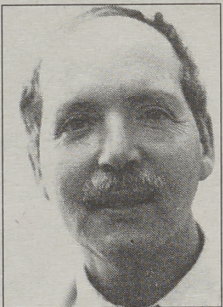
Yael Avissar

As winner of the Thorp honors, Avissar will receive a \$750 cash award and a reduction in her teaching load by one course for each of the two

semesters in the academic year. Winners of the Maixner and O'Regan awards each will receive \$250 cash award and a \$500 allotment from the dean to attend a professional meeting or conference of their choice.

### Joan Dagle

Professor Dagle came to RIC in 1976 after her formal studies which included a bachelors degree *summa cum laude* (and Phi Beta Kappa) from Connecticut College where she was Winthrop Scholar, and Ph.D. from



Barry Schiller

Brown University where she was a teaching assistant from 1972 to

Continued on page 8

## Student voter registration drives with local media energize referenda discussion



**VOTER REGISTRATION:** The RIC Political Science Club co-sponsored a voter registration drive along with Cox Communications and local radio station 920 WHJJ on Sept. 23 when the C-Span Campaign '96 School Bus visited the campus. Above, senior Kelly Mahar reaches for a pen to sign her registration form. It is hoped that student voters will help approve the \$74 million in educational bond issues which will be on the ballot this November. (What's News Photo by Gordon E. Rowley)

by Clare Eckert  
What's News Editor

About 75 Rhode Island College students registered to vote Sept. 23 during a Cox Communications media event, hosted by RIC, that brought C-SPAN, Cox Communications and 920 WHJJ to the campus mall, along with the *Providence Journal* and NewsChannel10, both of which covered the afternoon event in their respective mediums.

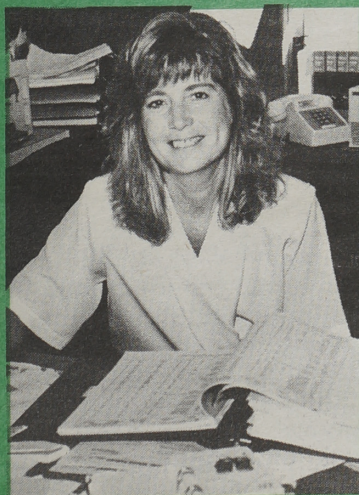
The voter registration drive was sponsored by 920 WHJJ, Cox Communications and the Political

Science Club. Cox Communications is also credited with selecting RIC as a host site for the C-SPAN '96 Campaign Bus Tour informational and instructional visit. According to representatives from the visiting media, the afternoon event was "extremely successful."

Local radio station representatives noted that those students who registered during the event represented the highest voter registration turnout for 920 WHJJ since the station began promoting its "Rock the Vote" campaign to young people this election year.

Continued on page 8

## Proud to be a part of RIC!



*"I find RIC to be a great place to work. There is a challenge every day. For me it's a chance to work in an environment that is constantly changing...a place where I can develop my management skills."*

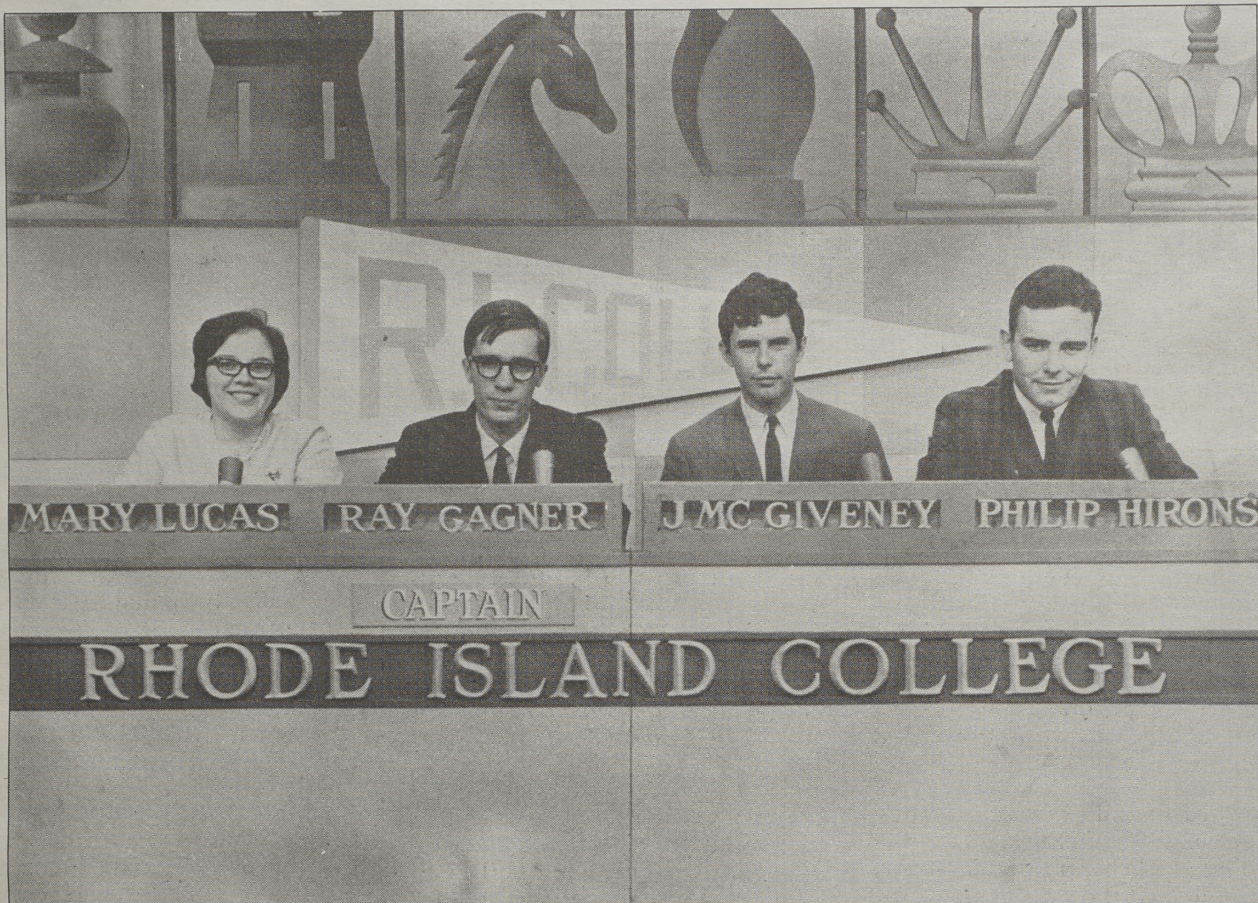
*...Debbie Dunphy, facilities management officer"*

*(What's News photo by Gordon E. Rowley)*



# The Way We Were...

This popular item in What's News will continue this year in order for you to be able to revisit your alma mater with a selection of photos from the past — the College's past, whether the current era (Rhode Island College) or past eras (Rhode Island College of Education or Rhode Island State Normal School). We invite your contribution of old photos, along with sufficient information about each such as who's in the photo and what they are doing, the year it was taken and place (if possible). In the meantime, we'll continue searching our files for interesting pictures of past College life.



THIRTY-ONE YEARS AGO, Rhode Island College sent a team of scholars to New York City to compete in the NBC television program College Bowl. On the show, one school was pitted against another, answering questions on a wide variety of subjects. RIC won its first "scrimmage" — against the University of Washington, but was defeated the following week when it faced St. Francis College of Brooklyn, N.Y. Above, left to right, are Mary Lucas, Class of 1965, and now an adjunct faculty member in history at RIC; team captain Ray Gagner (1966); John McGiveney (1965) and Philip Hiron (1965). (Rhode Island College file photo)

## WHAT'S NEWS AT RHODE ISLAND COLLEGE

**Editor:** Clare Eckert  
**Associate Editor:** George LaTour

**Staff:** Pauline McCartney, Word Processing Supervisor; Gordon E. Rowley, Photographer; Cynthia L. Sousa, Editorial Assistant

**What's News at Rhode Island College** (US681-650) is published biweekly by Rhode Island College Office of News and Public Relations, 600 Mt. Pleasant Ave., Providence, RI 02908. It is published throughout the academic year except during semester breaks. Second-class periodicals postage paid at Providence, RI

**Postmaster:** Send address changes to What's News at Rhode Island College, Office of News and Public Relations, 600 Mt. Pleasant Ave., Providence, RI 02908

**Deadline:** Deadline for submission of copy and photos is noon the Friday two weeks before publication date.

**Telephone/FAX:** (401) 456-8090; FAX 401-456-8887

**Printing:** TCI Press

The next issue of  
**What's News** is  
**Monday, Oct. 21.**  
Deadline for submission of  
copy, photos, etc.  
is noon on Friday, Oct. 11.

## RIC Alumni Association Book Award winners announced

The Rhode Island College Alumni Association Book Awards program, now in its tenth year, is a program funded by RIC alumni and friends who purchase, for \$34.95, a leather bound, two volume set of the *American Heritage Dictionary* and *Thesaurus* for high school seniors planning to attend RIC.

This year's recipients (in bold print) and RIC alumni faculty members and/or individual supporters are:

**Courtney Ranaldi** of Bishop Keough High, Mary Ann Welch, Class of 1977; **Kelly Trahan** of Burrillville High School, Melinda H. Rayn, Class of 1974 and faculty; **Rebecca Lussier**, Central Falls High School, Bruce Maksound, Class of 1987 and faculty; **Aimee C. Kelley**, Chariho High School, Syd Cohen, Class of 1940; **Kenneth D'Uva** and **Lazmine Mena**, Classical High School, Betty M. Gordon, Class of 1968 and faculty; **Meghan L. Maleski**, Coventry High School, Joseph E. Fournier, Class of 1968, faculty, staff, and administration.

And, **Alana Massemينو** and **Kassia Sojka**, Cranston Career and Technical Center, Joanne DiOrio, Class of 1976, faculty, staff and administration; **Heather Rossi** of Cranston East High School and **Alaysha Cotton** of Cranston West High, Donald Babbitt, Class of 1959; **Amy Correia** of Cumberland High

School, Ed Spaulding; **Joy Chamberland** of East Greenwich High School, Raymond J. Pouliot, Class of 1970 and faculty; **Kathleen Perry** of East Providence High School, Edward L. Cronin, Jr.; **Amie LeClerc** of Exeter-West High School, Robert Hicks, Class of 1990, superintendent.

Also, **Abdullah Almhas**, Feinstein High School, Katia Paris, Class of 1971, faculty, and administration; **Christopher A. Souza** of Johnston High School and **Kathleen Hardiman** of LaSalle Academy, Joseph Neri, Class of 1969; **Michael Hallor** and **Greta Guilbault** of Lincoln High School, Robert R. Blais, Class of 1955; **Christine Martin** of Middletown High School, Joseph J. Ferreira, Class of 1987.

And, **Jason Canario** of Mt. Hope High School, Elizabeth Brito and faculty; **Marc DuBois**, Mt. St. Charles Academy, Norman Cantin, Class of 1971; **Cindy-Sue Dyndur** of No. Smithfield High School, David S. Silva, Class of 1968 and faculty; **Theodore August**, **Jessica Gotjen**, **Alicia Barry**, **Joshua Monroe**, Our Lady of Fatima High School, John Hagan, Class of 1955.

Also, **Tracy Ann Boudreau** of Pilgrim High School, Gerald Floria, Class of 1965 and faculty; **Tiffanie A. Clauer** of Portsmouth High School, Daniel L. Ustick, Class of 1973 and faculty; **Christine W. Silvia** of Rogers High School, Miguel

Lopes, Class of 1971; **Christina Pirolli**, St. Mary Academy Bay View, Mary Jane McGuinness Blanchette, Class of 1963 and faculty; **Danielle Beaudoin**, St. Raphael Academy, Sharon J. Stoutzenberger and guidance department.

And, **Julie Norberg** of Smithfield High School, Emily Ritter, Class of 1974, faculty and Elaine Jenkins, librarian; **Angela Briggs**, So. Kingstown High School, Barbara J. Crudale, Class of 1989 and faculty; **Leach Manchester** of Tiverton High School, Mary V. Pacheco and "student fund;" **Jennifer DiMase**, Toll Gate High School, Marjorie Swierk and faculty.

And, **Jeff R. LeClair**, Tolman High School, John Nazarian, Class of 1955, President of RIC; **Kourtney J. Kostka**, Tolman High School, Mariam Boyajian, Class of 1970; **Christina Johnson** of Warwick Veterans Memorial High School, Alison Creswick, Class of 1986; Patricia Serpa, faculty; and **Michelle Jacob**, Westerly High School, Kenneth F. Chaffee, Class of 1972.

The program has been extended to any high school outside of Rhode Island that will be sending a graduating senior to RIC. Alumni living out of state who are interested in sponsoring an award should call Alumni House at (401) 456-8086.

## Joint Ph.D. program to hold open house Oct. 21

The Rhode Island College-University of Rhode Island Ph.D. in Education program will hold an open house and informational meeting for prospective applicants at RIC's Forman Center on Monday, Oct. 21, from 4 to 5:30 p.m.

The session will provide specifics about the program and the application process. Program directors, teaching faculty and current doctoral candidates will be available for an informal question-and-answer exchange.

The innovative, collaborative program, established through a grant from the Alan Shawn Feinstein Foundation, is in its second year and expects to graduate students in the spring of 1999.

While in residency this year, second-year students are engaged in site-based research projects statewide. Working with other educators and public agencies, the candidates are examining school change processes, teaching and learning environments, equity issues and grant/scholarship programs.

Anyone interested in the program is welcome to the open house. Please RSVP at 456-8112 if you plan to attend.



## Upward Bound to observe its 30th anniversary with gala Nov. 16



**30TH ANNIVERSARY GALA** for the Upward Bound program at Rhode Island College is being served by honorary co-chairs Viola Davis, a 1983 Upward Bound graduate, now a Broadway actress, and College President John Nazarian.

by George LaTour  
What's News Associate Editor

The 30th Anniversary Celebration Gala for Rhode Island College's Upward Bound program will be held on the evening of Saturday, Nov. 16, in the Donovan Dining Center.

The evening — which will provide a reunion for Upward Bound alumni as well as a chance to meet current students, faculty and staff associated with the program — will include a reception at 6 p.m., followed by dinner, a limited speaking program and entertainment by the musical group Twyce.

Tickets are \$35 (\$25 for Upward Bound participants and alumni who are enrolled in college) and may be obtained by calling the Upward Bound office at 456-8081. All proceeds will benefit the Upward Bound Scholarship Fund.

RIC President John Nazarian and

Upward Bound graduate from the Class of 1983, Viola Davis, now an actress, are honorary co-chairs.

Celebrating its program as one which has provided "A Generation of Hope and Achievement," Upward Bound has realized unqualified success in its efforts since 1966 to provide hope, encouragement and training to qualified high school students, thus ensuring them success not only in high school, but in their efforts at college or university enrollment and eventual graduation.

About 1,400 students from throughout the state originally and later the targeted high schools of Central Falls, Shea (Pawtucket), East Providence and Hope, Central and Mount Pleasant (Providence) have participated so far. Ninety-eight percent completed the program and went on to college and of those, 78 percent have graduated.

Today, they are doctors, lawyers, teachers, engineers, social workers, computer scientists, health care professionals, artists and actors.

Under pressure from civil rights advocates, Congress created Upward Bound in 1965 through the Higher Education Act. The following year, the first class enrolled at RIC, which was selected to administer the program in Rhode Island. The RIC program is one of 575 in the United States. Its director for the past 15 years has been Mariam Z. Boyajian.

The federal government allocates about \$422,000 a year for the program, and RIC contributes another \$50,000. Students receive a small stipend — \$90 for the summer when they study on site at RIC for an intense six-week session during which they live in campus housing and \$190 during the school year — for books and other expenses. During the school year, the high school students come to the RIC campus on Saturday mornings for instruction.

Besides studying the basics — English, math, science and foreign languages — students also take courses on how to improve their study habits and social skills, and career options are explored.

Competition is tough. Of the 250 applicants last year, the Upward Bound staff selected only 58.

To be considered for the program, students must be citizens of the United States or a permanent resident, be a potential first-generation college student, come from a low-income family, not be older than 19 and be in the 9th, 10th, or 11th grades in one of the target high schools.

The students are usually highly motivated to succeed and most, by far, do succeed, fulfilling the vision of its local founders, John A. Finger, Raymond W. Houghton, Maureen Lapan and Thomas Lavery.

The philosophy of the RIC Upward Bound program was first conceived by Professor Finger, who believed that the nation should educate "all of the children of all the people."

"These educators possessed the force of intellect, the professional integrity, the requisite perspiration and dedication, and most importantly, the compassion to see that ideal through to fruition," notes and Upward Bound program history.

For more information, call Upward Bound at 456-8081.

## Service award fund to be established in honor of the late Patrick O'Regan

Former colleagues and friends of the late Patrick J. O'Regan, for whom the annual Distinguished Service Award in the Faculty of Arts and Sciences at Rhode Island College is named, are mounting an effort to establish a fund for the continuing support of the cash component of the award.

Letters have been mailed to all faculty, including those who have retired, selected current and former administrators and former students of O'Regan's, soliciting donations that will comprise the Patrick J. O'Regan Distinguished Service Award Endowed Fund in the RIC Foundation.

Anyone in these groups who have not received the mailing are asked to contact Prof. James E. Bierden at 456-9781 or foundation executive director Marguerite M. Brown at 456-8105.

All donations will be tax deductible.

The other annual awards for distinguished faculty in the Faculty of Arts and Sciences are the Thorp Professorship for scholarly contributions and the Paul Maixner Distinguished Teacher. The Thorp award is supported by a bequest to the RIC Foundation from the Thorp estate. The Maixner has been supported by

College funds as was the O'Regan.

O'Regan was a member of the RIC faculty from 1961 to 1991.

In addition to being a professor of mathematics and secondary education, he served on virtually every major College committee and on the boards of several state and regional mathematics education associations.

He was director of the General Studies Program and assistant dean of the Faculty of Arts and Sciences.

He is credited with starting the Bachelor of General Studies program and served as its first director. O'Regan also was the driving force behind the establishment of the College's Labor Studies program, Cooperative Education program and the Assessment of Prior Learning process.

In the community, he was instrumental in the success of a number of projects, including enhancing the opportunities of disabled persons to receive training and employment and building new homes for low-income families. He was founder and first president of the Industry-Education-Labor Council of Rhode Island, among other labor union activities.



## What's News

### RIC's Saturday Art Enrichment Program

Rhode Island College's Saturday Art Enrichment Program begins its 29th year of classes for children in October. Classes are being offered this year in drawing and painting, ceramics, sculpture, mixed media and drawing from observation. Classes are open to school children in grades 1 to 12 and are held from 9 to 11 a.m. Saturdays in the Art Center on the RIC campus.

An adult drawing class, primarily for parents of students enrolled in the program, will also be offered this year. This class will introduce basic concepts to adults who have had little or no art experience.

The 20-week program begins in October and continues through March, concluding with a major student exhibit in the Art Center galleries.

Registrations are now being accepted for the program. For information or to obtain a program brochure, call 401-456-8054 or 456-8127. In-person registration will be held from 9:30 to 11 a.m. on Saturday, Oct. 5, in the Art Center. Course tuition and supply fee is \$180.

### Barry M. Goldwater Scholarship

Rhode Island College students interested in a career in mathematics, the natural sciences, or engineering are invited to apply to the Barry M. Goldwater Scholarship and Excellence in Education Program.

Established by Congress in 1986, the Barry M. Goldwater Scholarship and Excellence in Education Foundation operates an educational scholarship program designed to provide opportunities for outstanding U.S. students with excellent academic records and demonstrated interest in, and potential for, careers in mathematics, the natural sciences and engineering.

In April 1997, the Foundation will award scholarships to students who will be college juniors or seniors during the 1997-98 academic year. In order to be considered for an award, students must be nominated by their institution. The deadline for receipt of all 1997 nominations is January 15, 1997.

The scholarship award covers eligible expenses up to a maximum of \$7,000 per year. Junior recipients can expect to receive a maximum of two years of support; seniors, one year.

To be eligible, a student must be a current full-time sophomore or junior and must be pursuing a baccalaureate degree, have a B average or equivalent, stand in the upper fourth of the class, and be a U.S. citizen, resident alien, or U.S. national who will pursue a career in mathematics, the natural sciences, or engineering.

Interested students should contact Charles Marzzacco in Clarke Science room 205 as soon as possible.





**MEETING THE BOARD:** Newly appointed interim director of Alumni Affairs Ellie O'Neill meets for the first time, officially, with the board of the Rhode Island College Alumni Association on Sept. 18 at Alumni House. Seated left to right are: Lucia M. Napoli Amado, Class of 1991; Betty Filippelli Gordon (1968), O'Neill; Syd Cohen (1940), president of the alumni association; and Cheryl Precopio (1991), assistant director of development for annual giving. Standing left to right are: Theresa Howe; Ellen Kitchell Riker (1981); Margaret Moy (1986); Norma (Piccirilli) DiLibero (1981); Erin Kavanaugh (1982); Jose Gonzalez (1976); Marianne Maynard Needham (1959); Brett Williams (1994); Arthur Campbell (1963); Heemong Kim (1980), and Inez Cote, RN (1976).

## Focus on Faculty and Staff

Faculty and staff are encouraged to submit items of information about their professional endeavors to What's News, Office of News and Public Relations, 303 Roberts Hall.



**Yolande A. Lockett**, assistant professor of nursing, presented her research entitled "A Comparison of the Achievement Levels of Physical

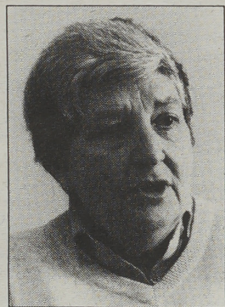
Assessment Skills Acquired by Baccalaureate Nursing Students in a Subject-Centered Course and in an Integrated Format," in a poster presentation at the American Nurses Association's Council of Nursing Research 1996 Scientific Session held in June in Washington, D.C.

**Marguerite M. Brown**, director of development and executive director of the Rhode Island College Foundation, received an honorable mention in the 1996 Grezebach Award from the Council for the Advancement and Support of Education (CASE) for her doctoral dissertation entitled "Institutionally-Related Foundations: Issues of Autonomy and Independence: An Analysis of Selected Components of a National CASE Survey."

**Stephen Ramocki**, professor of marketing, had his 10 essays on teaching creativity posted by ELMAR, a marketing educational listserv. His most recent article, "Developing Creative Marketing Graduates," was published in this spring's issue of the *Marketing Education Review*. Additionally, the *Marketing Educator*, a quarterly publication, has requested that he produce a series of articles concerning the teaching of creativity to be published over the next two years. The first one is scheduled to appear this month.

**Pat Cordeiro**, professor of elementary education and department chair, was recently elected chair of the Elementary Section of the National Council of Teachers of English (NCTE). She will serve a two-year term representing the elementary section on NCTE's Executive Committee. Her term begins after the NCTE Annual convention in Chicago, Ill., Nov. 21-26. Cordeiro is also a member of the NCTE Editorial Board and the

Rhode Island Writing Consortium, and former president of the Whole Language Teachers Association. She also has served on the review boards of Language Arts and The Reading Teacher and is the author of *Whole Learning: Whole Language and Content in the Upper Elementary Grades* and the editor of *Social Studies, Literacy, and Whole Language: Profiles of Classroom Communities, Grades 1-6*. In addition, she received the Distinguished Scholarship award from RIC and an Exemplary Teaching Award from the state of Massachusetts.



**Sara Weiss**, a counselor in the Office of Student Life, received the Rehabilitation Professional Award for 1996 from Projects with Industry, Inc. at its annual awards dinner held recently at the Radisson Airport Hotel in Warwick.

**Len West**, adjunct professor in the Educational Studies Department, completed a five-month series of 32 invited presentations for 1,510 students and teachers in Rhode Island elementary and secondary public school. His interdisciplinary education project, utilizing moon rocks and meteorites from space, is coordinated with existing science, English, social studies, and art curriculum. He also actively encourages youth to stay in school, live drug-free, and take responsibility for their actions. This project has been offered to the public schools at no cost since he began it in 1987.

**Felicia Wilczenski**, assistant professor in the Department of Counseling and Educational Psychology, recently presented a paper entitled "Collaborative Action Research to Facilitate Inclusion" at the 19th annual International School Psychology Colloquium at the Eszterhazy Karoly Teachers Training College in Budapest, Hungary. The paper was cited as an innovative and promising assessment practice in the field of school psychology.

**Francis J. Leazes Jr. and Victor A. Profughi**, professors of political science, recently had published two case studies on ethical decision-making in state government. The cases appear in a volume entitled *Ethical Dilemmas in Public Administration* (Praeger, 1996).



**VICTOR A. PROFUGHI**

This collection of cases, reports Leazes, has been well received by both practitioner and academics because it is the first time the actual experiences of administrators are used to analyze the practical difficulties of applying ethical principles in the real world of the public administrators. Each case has a co-author who is a top-level official in state government.

Sherry Campanelli, associate director of human services, and Maureen Maigret, former department director of Elderly Affairs, were co-authors with Leazes and Profughi, respectively. The volume is an out-growth of year-long FIPSE-sponsored ethics workshops in which both Leazes and Profughi participated. Faculty from RIC, the University of Rhode Island and UMass-Dartmouth contributed to the work.

**Richard A. Lobban**, professor of anthropology, presented a professional paper at the Sept. 8-13 meeting of the eighth International Congress of Meroitic Studies at the British Museum in London. Entitled "Foreign Relations of Dynasty XXV," it dealt with the eighth to seventh century B.C. period when Nubians were rulers of Egypt and thus leaders of a major power in the ancient world having complex relations with Judeans, Assyrians, Libyans and Egyptians.

Lobban will be on sabbatical leave in 1997 when he will tour Egypt and Nubia with his annual study tour. He will be writing a new book on Ancient Nubia and preparing the third edition of his jointly authored *Historical Dictionary of the Sudan*.

## In Memoriam —

### Retired English Assoc. Prof. Helen Walker Williams

Funeral services recently were held at St. Stephen Episcopal Church, Providence, for Helen Walker Williams, a retired associate professor of English at Rhode Island College.

Formerly of Cranston, she died in the Philip Hilar Hospice In-Patient Center in Providence at age 82. She was the wife of Dr. Charles N. Williams.

Born in Hendersonville, N.C., she was the daughter of the late Dr. Nathaniel D. Walker and Ethel (McAlpine) Walker. She earned a bachelors degree from Spelman College in Atlanta, a masters degree from the University of Michigan at Ann Arbor and a doctorate from



**HELEN WALKER WILLIAMS**  
(FILE PHOTO)

Boston College, and had studied for a time at the former Rhode Island College of Education (now RIC).

In 1958, she became the first African-American woman to be given a permanent job as a teacher in the

Rhode Island school system when she was hired as a teacher of English and social studies at Esek Hopkins Junior High School in Providence.

According to her faculty profile at the RIC Office of News and Public Relations, she served on the RIC faculty from 1959-1963 as "state critic for Rhode Island College."

She began her teaching career at Selma University in 1937 and later taught at Georgia State College and did research at the University of Chicago, among other positions, before coming to RIC.

She was a member of the Phi Delta Kappa Society, the Delta Kappa Gamma Society and the Delta Sigma Theta Sorority, which recently honored her as "Teacher of the Year."

Surviving besides her husband, are a sister, Mrs. Eunice W. Johnson of Chicago; a son, Charles N. Williams Jr. of Oxnard, Calif.; a daughter, Helen E. Williams of Cranston and two grandchildren. *G.L.*

### RIC senior wins scholarship

Rhode Island College senior communications major Amy L. Gartland of Burrillville has won a \$2,000 New England Direct Marketing Association Foundation (NEDMA) scholarship, it was announced in the association's newsletter, *DirectTalk*.

In addition to the scholarship — one of two awarded this year by the association — Gartland was given an internship at Direct Results Group in Boston, an agency that deals in Internet Web Site development. She participated in new business presentations and worked with account executives on existing client business.

She also earned a trip to the national Direct Marketing Association institute in Boston for three days in July.

A daughter of Edward and Suzanne Gartland of Burrillville, she had applied for the scholarship which judged applicants on the basis of their resumes, college transcripts, personal recommendations and interviews.

Gartland works part-time in Lincoln for ListPerfect, a direct-marketing firm. After graduation, she would like to get into advertising, possibly in account management, she says.



## Alumna Patricia Nolin spoofs Rhode Islanders but still sings —

# 'Rhode Island, It's For Me!'

by George LaTour  
What's News Associate Editor

One of the stars of the Rhode Island College summer Cabarets of the 1980s is still knockin' em dead from the stage these days.

Patricia A. Nolin of North Providence, a graduate of RIC, Class of 1984, with a master's degree in 1987, is one of the headliners at the popular Ocean State Follies and has been for the past four years.

The Follies, as you may know, regularly zings local Rhode Island politicians, newscasters and Rhode Islanders in general in skits filled with dialogue (both scripted and ad lib), song and dance, much to the enjoyment of audiences as well as those at whom the satirical spoofs are aimed.

The audiences, ranging in ages from 20 to 80-plus, usually fill the modest-sized rooms provided a couple of nights a week at the Great House in Warwick and, in the summer, George's of Galilee. Other sites at which they will perform this fall include Zenga's in East Greenwich, Chan's in Woonsocket, Luigi's in Johnston, the Wharf Tavern in Warren and Julio's in North Providence.

And the audiences usually do "get it," that is, they understand the satire not only of the local people in the public eye, but of themselves as well.

Yes. The Follies folks have "Rhode Islandese" down to a "t" or should we say the "r" that most of us are fond of injecting in so many of our words.

And, since imitation is the sincerest form of flattery, the office holders and media types who get the brunt of the broad-based comedic sketches generally approve, "although we've had three instances where members of the audience got miffed," says Nolin, "but only three."

In the last elections, gubernatorial candidates Linc Almond, Myrth York and Bob Healey each attended on different nights "and campaigned between the sketches."

### Buddy Cianci

Providence Mayor Buddy Cianci, "who's always included in the skits," hired the Ocean State

Follies to do a recent birthday celebration he had for himself, and TV 10's co-anchors Doug White and Ginger Casey showed up one night unannounced and came on stage to the surprise of the performers and the delight of the audience.

Billed as "a musical and satirical look at Rhode Island," the Follies was created and produced by Charlie Hall, a Rhode Island School of Design graduate and popular local comedian, and features, in addition to Nolin, Jeff St. Germaine, Maria Day, who also serves as company manager, and Chris Martineau, although Nancy Hilner substituted for Day on this night. The musical director and pianist is Kathryn Chester.

Of course, they have to keep abreast of the latest goings-on around the state, relates Nolin, who says that "Charlie will write (his version of the) news for us as well as oftentimes spur-of-the-moment skits."



"We do improvise," says Nolin, explaining that that "keeps things fresh. It's always changing" so even repeat customers don't know what to expect.

At a recent Friday night show at the Great House, St. Germaine warmed up the audience a bit with some one-liners and a description of the thrust of that evening's performance: "We cover quirks and jerks of the Ocean State" and intimated that, it being an election year, there was plenty of material to work with.

"It's all good fun," assures Nolin, adding, "it's done almost with a fond-



**ON THE STAGE (above) with the Ocean State Follies is Patricia Nolin with Jeff St. Germaine and ON THE LINE (inset) for Options for Working Parents. (Photos by Gordon E. Rowley)**

What takes most of Nolin's time is her position as executive director of Options for Working Parents, a non-profit child-care resource and referral service sponsored by the Greater Providence Chamber of Commerce.

Being the only child-care-and-resource service in the state, "when families need child care they call our office and we refer them," says Nolin.

For more than 10 years, Options for Working Parents has been helping Rhode Island families find child care for their children while helping Rhode Island businesses develop child-care resources to help their workforce.

And as most people realize these days, adequate professional child care is becoming more and more needed with 75 percent of all Rhode Island families having both parents working.

"When a business does not provide secure child care," notes Nolin, "they find employee absenteeism goes up."

Other concerns for employers may be a high turnover rate and increased cost to training new employees.

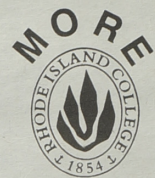
Options has access to all licensed child-care facilities in the state as well as after-school programs, in-home agencies and certified family providers who are licensed to care for children in their homes.

All these sources of child care are in the Options' computer database.

A call to 272-7510 will put interested parents in the know.

Options for Working Parents is located at 30 Exchange Terrace in Providence (part of the old Union Train Station complex).

Patti, as her friends call her, is a



**What's  
News**

## Flu Shot Clinic at RIC Oct. 9

The VNA of Rhode Island will be sponsoring a flu shot clinic at Rhode Island College from 11 a.m. to 2 p.m. on Wednesday, Oct. 9 in the Student Union Ballroom. The Clinic is open to the public ages 18 and older. The costs of the flu shot is \$10.

People age 65 or older, those with long-term heart or lung problems, diabetes, kidney disease, asthma, cancer, AIDS, those who have contact with people at high-risk for contracting the flu or those that cannot risk being sick because of demanding family or work responsibilities should consider getting the shot.

## Social work interns will complete 115,320 hours of community service!

The School of Social Work Office of Field Education has placed 232 students in its internship program for the academic year 1996-97.

Seventy-six students are enrolled in the master-of-social-work program (first year) and are required to put in 16 hours per week which equals 480 hours per year, at an outside agency placement. The second year MSW program students must do 20 hours per week which amounts to 600 hours/year.

Bachelor-of-social-work students, of which there are presently 84, also intern 16 hours-per-week (480 hours per year). There are also 13 structured part-time students who do an eight-to-10 hour per week placement.

Totalled, the students will complete over 115,320 hours of community service over the next eight months. This figure, when broken down, equals 3294.85 35-hour weeks, or 63.36 years of community service.

## Alumnus Ron Clare receives award

Rhode Island College alumnus, Ron Clare, Class of 1968, (M.A. 1972, C.A.G.S. 1976) was recently awarded the Charles E. Cushman Award from the International Personnel Management Association-Eastern Region. Clare is the State of Rhode Island's chief of merit selection and classification.

The award is in recognition of "outstanding and lasting contribution to the field of public human resource administration and promoting sound, positive, innovative and effective human resource principles." The Cushman Award, established in 1957, is presented annually and is considered the region's most prestigious award. It is a tribute to Charles E. Cushman, Rhode Island's director of personnel during the 1940s. Clare is the first Rhode Islander to receive this award and only the second New Englander.

Clare is a founder of the International Personnel Management Association, Rhode Island chapter, and the IPMA's Tri-State conference.

**This is the second part of a five-part series of profiles on performing arts graduates, highlighting the need for a new Performing Arts Classroom Facility at RIC, part of Referendum #3, slated to go before the voters Nov. 5.**

*"I was very excited for the students and, of course, the dedicated faculty, when I heard of the plans for the expansion and development of the Theatre and Performing Arts complex. Improved facilities can certainly enhance the offerings brought to the community through its productions and its students, which I know to be a value in our state."*

*"Many Rhode Island College alumni whom I have had the pleasure to know, have gone on to establish fulfilling careers in the fine and performing arts. The training and instruction we were able to acquire were certainly the catalyst for future ventures."*

*"Exposing students of all disciplines to the arts develops the rich experience to be found at Rhode Island College. The Performing Arts Series is a prime example to consider here. By professional dance, music and theatre companies being presented, students as well as the community-at-large experience and learn from the performances offered at the College."*—Patricia Nolin

ness" for those they skewer. "And, it keeps their names before the public so they love it."

### Is executive director

Of course all this IS fun and, while Nolin and the others in the Follies are stage professionals and as such get paid, it's only a part-time venture.

Continued on page 8



# RIC's cycling supervisor covers a lot of territory



"Base to forty-three. Base to forty-three. Come in."

That's Phyllis Gath in physical plant trying to reach Bob Davis on a walkie-talkie. Davis is the College's building maintenance supervisor, and with 28 buildings to service on 170 acres, he could be anywhere on campus. But Davis has found the perfect solution to covering a lot of ground in a hurry.

He rides a bicycle.

Last year, both he and plumber Chuck Voyer were given bikes by the College. "We used to use a pick-up truck or walk," says the soft-spoken Davis. "But it was hard to park the truck."

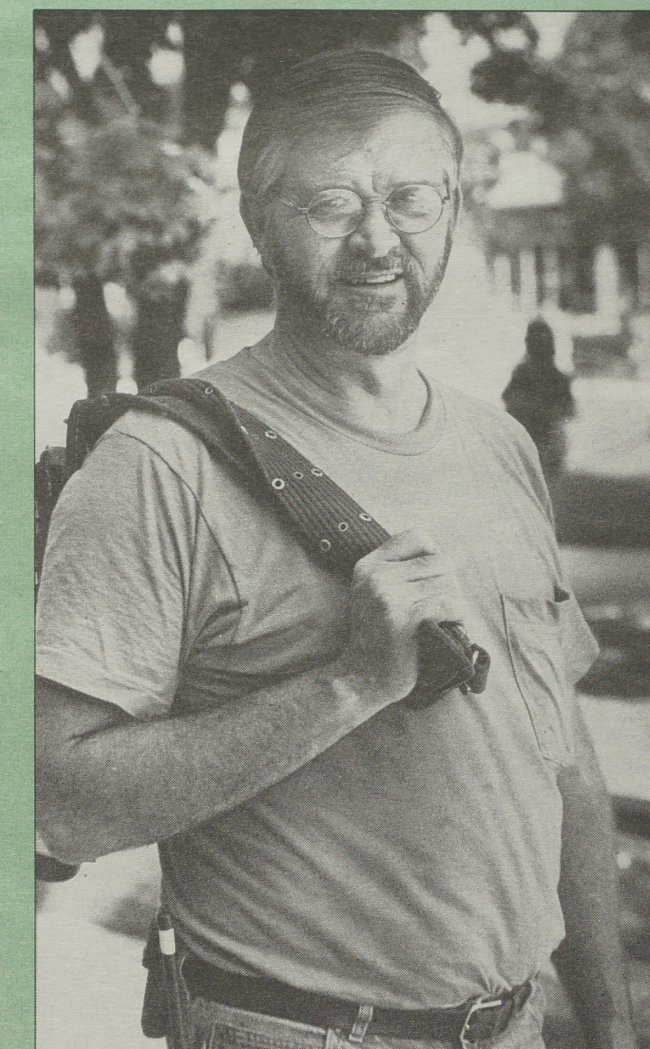
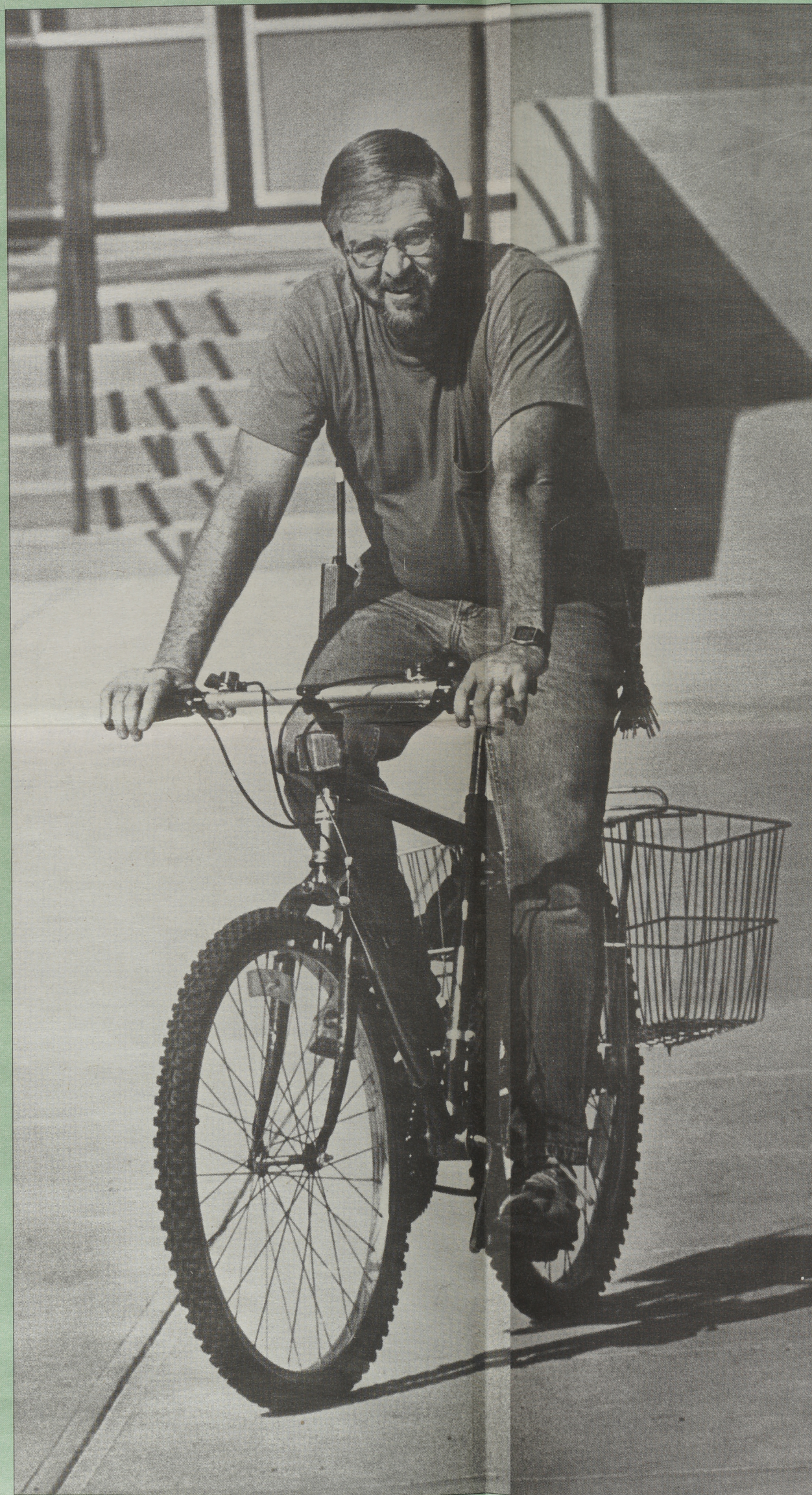
His Huffy "Strobe" has dual baskets to hold his tools and replacement parts for small jobs. So with his tool belt and his 15-speed he can zip to a trouble spot in no time. The only place where it's tough going, he says, is the hill in front of Sweet Residence Hall.

A jogger in his off-hours, Davis rides a bike only at work.

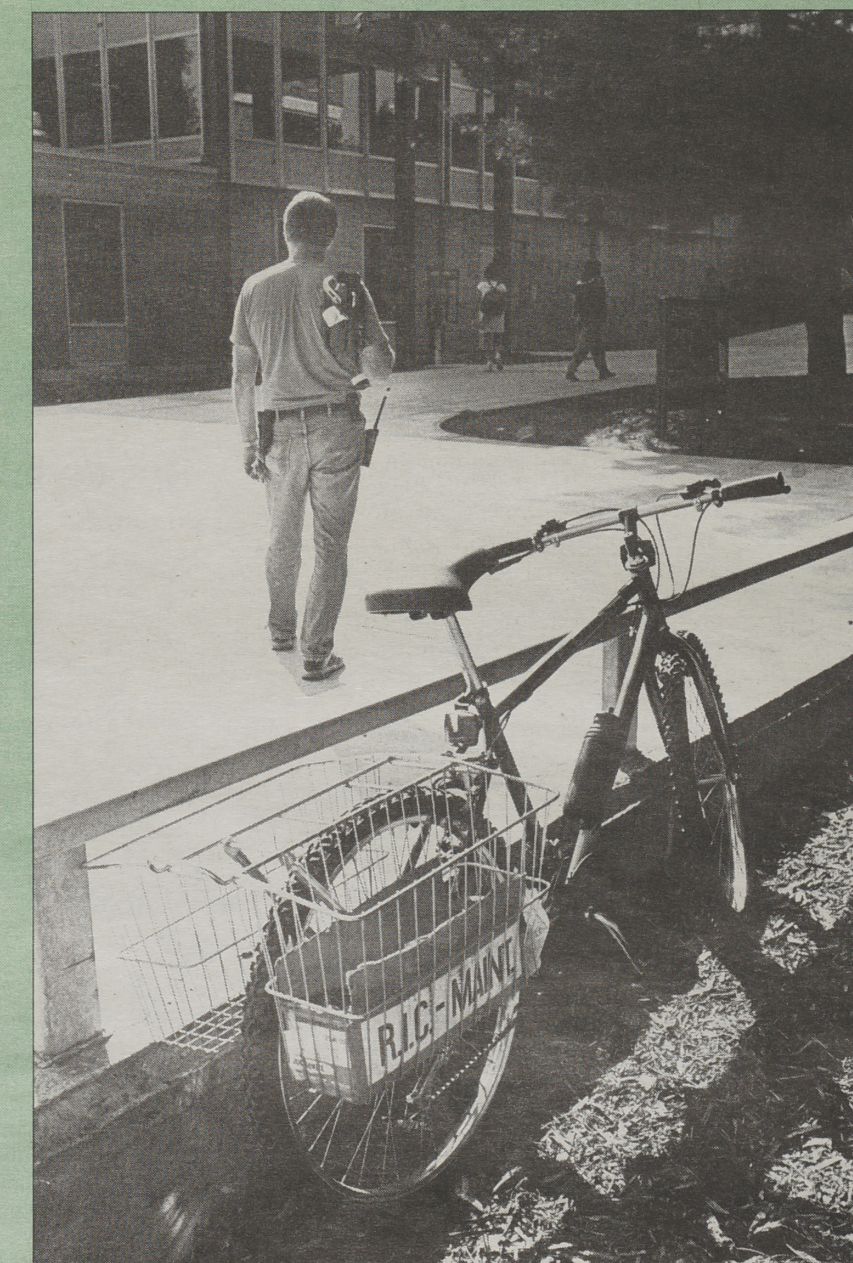
How does he like his new mode of transportation.

"I love it!" he says.

Upper left to lower right: Bob Davis getting his marching...er...make that "riding"... orders from Jim Bucci, assistant director of facilities and operations; cycling along the mall on his "Huffy;" with tool belt over his shoulder, Bob is ready for the next repair; then another stop.

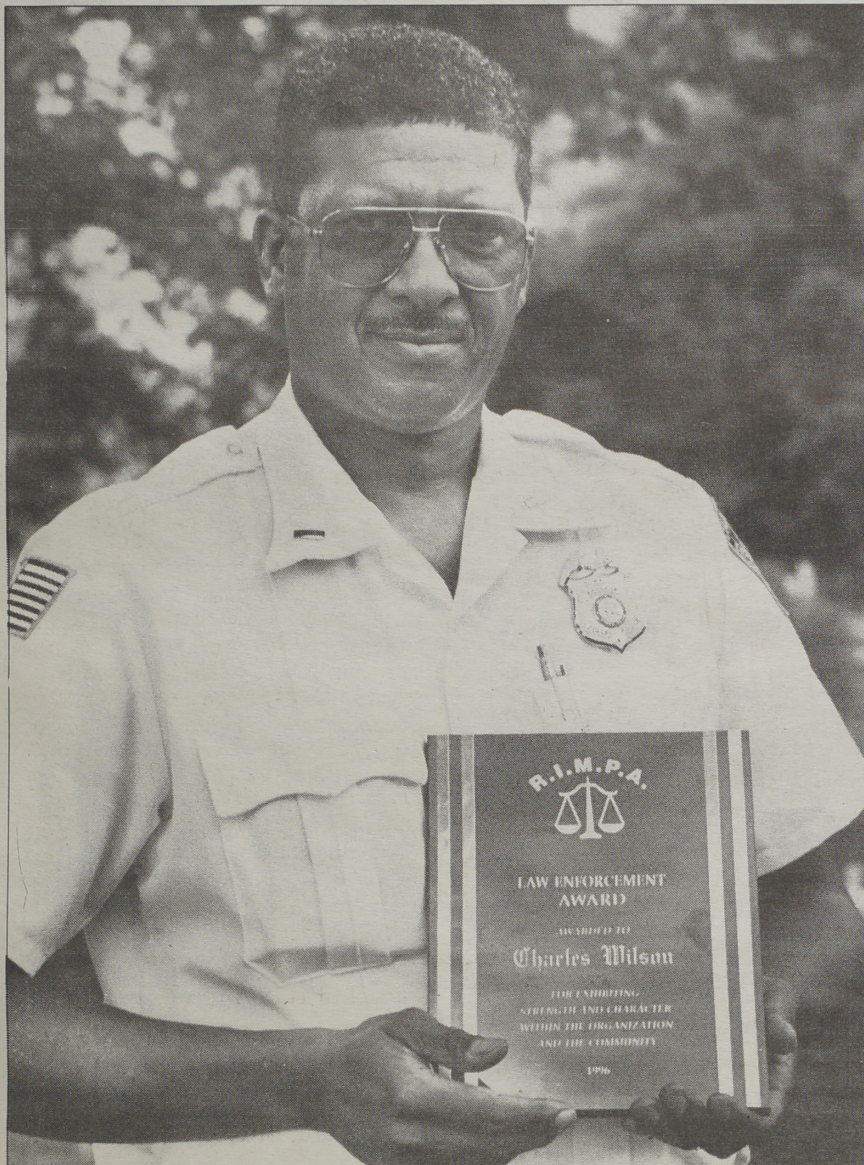


Text and photos by  
Gordon E. Rowley





## College police office receives Rhode Island Minority Police Association's Law Enforcement Award



**HONORED:** College police officer Lt. Charles P. Wilson, of Smithfield, received the Rhode Island Minority Police Association's (RIMPA) Law Enforcement Award at its Aug. 9 annual ball. The award, the second highest award possible to be earned by a member of RIMPA, was given to Wilson for "exhibiting strength and character within the organization and the community." Wilson is the first non-Providence police department officer to receive this award.

## Voter registration

Continued from Page 1

A second off-campus voter registration drive sponsored by the Political Science Club and Student Community Government, along with the year-long "We The People" voter registration campaign from NewsChannel 10, which was held at the Warwick Mall on Oct. 2, was as well successful. More than 40 people were signed up to vote between 11:30 a.m. and 2:30 p.m.

Both events were held in conjunction with the College's efforts to ensure passage on election day, Nov. 5, of Referendum #2 and #3 for improved telecommunications and facility renovations and construction at all three public institutions of higher education. Student organizers passed out brochures and shared information about the two bond issues during both events.

(Referendum #2 asks for \$40.6 million for a telecommunications system that will link faculty, students, and staff at RIC, URI and CCRI to each other and the world. Referendum #3 seeks \$33.8 million to construct or renovate facilities at the three institutions. For RIC, this means \$9.5 million to construct a performing arts classroom facility. For URI, three classroom and administrative buildings would be completely renovated, and for CCRI, a new classroom facility to its Warwick campus.)

Other on-going projects of the public awareness campaign being organized by faculty, students, staff,

alumni and RIC Foundation representatives are "letters to the editor," speaking engagements with senior citizen groups and chambers of commerce and newspaper editorial meetings.

Two general informational sessions for the campus community are scheduled for Wednesday, Oct. 9 from 10 a.m. to noon and Tuesday, Oct. 15 from 4:30 to 6 p.m. Both will be held in the Alumni Lounge. According to organizers, people are invited to ask questions and pick up brochures, lapel stickers, and posters. In addition, a sign-up sheet with detailed information about volunteer activities will be available during both sessions. (The first informational session was held after deadline.)

Among those campaign activities identified as priorities for campus volunteers are: Distribute Brochures in Your Neighborhood; Speaking Engagements and Organizational Endorsements; Posters and Brochure Posting at Local Businesses; Home Lawn Signage; Letters to the Editor; Postcards to Your Friends and Neighbors; Phonathon; and Election Day Availability for Brochure Distribution. A fact-sheet describing in detail what each activity demands is being distributed throughout campus.

For further information or to sign up to volunteer time, call 456-8004 or 456-8090.

## Distinguished faculty named

Continued from Page 1

1976.

"Dr. Dagle quickly established herself at RIC as an extraordinarily able and inspiring teacher," noted her citation.

She is credited with having taken on "numerous new teaching assignments" in the English department, Film Studies Program and in the College Honors Program ranging from freshman-level writing courses to advanced courses on German Cinema.

"Students seek her out to direct senior honors projects and the master's theses," said the citation.

A former student commented that "what strikes so many as the mark of a skilled teacher is Dr. Dagle's ability to direct discussion, however unobtrusively, toward the issue on which she wanted to focus and that students on their own might have shied away from. She continues to provide contexts for students to make discoveries. Her students rise slowly but surely to the challenges she very gently, but also very clearly, puts before them. And by the close of a class they are doing things with narrative that they would have not imagined themselves doing just before."

### Yael Avissar

Professor Avissar earned her bachelors and masters degrees from Ben Gurion University and doctorate from Michigan State University.

Her work has led to a complex multi-national career route that has included post-doctoral work supported by the U.S. Department of Energy at Michigan State, a teaching position in the biology department at her *alma mater* in Israel, a research position in the department of biochemistry and molecular biology at the Pasteur Institute in Paris, and a research position in the Division of Biology and Medicine at Brown.

She came to RIC's biology department in 1990 "with an impressive record of research accomplishment," noted her citation.

The results of her research have been reported in dozens of presentations at professional meetings and in 29 scientific journals.

She has been invited to serve as a reviewer of research proposals by the National Science Foundation, the National Institutes of Health, the U.S. Department of Agriculture and the Department of Energy.

"Known for her keen insight and creative problem-solving skills, she continues to be sought out by her fel-

low scientists as a research collaborator" at such institutions as Harvard and at Woods Hole Oceanographic Institute.

Avissar has influenced the development of many high school students as advisor to the biology program at Classical High School and as a judge at the Science Olympiad and various science fairs.

Her citation said she was "a scientist with an impressive record of success in various areas of biochemical research and a unique ability to generate enthusiasm for the process of science in those around her."

### Barry Schiller

Professor Schiller arrived at RIC in 1966 following an undergraduate education at the City University of New York and graduate work at the University of California at Davis, Florida and Oregon state universities.

"Since then, he has engaged in an unusually wide range of activities, including extensive departmental, college, union, professional and community involvement," his citation noted.

"There is virtually nothing on this campus in which he has not been active," it said, citing his participation on the Council and committees of Traffic and Parking, Calendar, and Library Advisory as well as serving as the faculty representative to Student Parliament and service on the executive, nominating and negotiating committees of the faculty union.

Most recently, he served as vice president of the Environmental Council of Rhode Island, chairman of RIC's Earth Day-20 Program, member of the state committee on air quality and the Rhode Island Transportation Advisory Committee as well as the legislative commission studying commuter rail.

In 1995, he was appointed by Gov. Lincoln Almond to the board of directors of the Rhode Island Public Transit Authority.

He has been a prolific writer of Letters to the Editor at the *Providence Journal-Bulletin*, one of which has been quoted by U.S. Sen. Claiborne Pell on the Senate floor and read into the Congressional Record.

A letter in support of his nomination for the O'Regan Award summarized his performance thus: "Although he often seems to be a lone voice in the wilderness, he is ever persistent in pursuing the standards he perceives as right."

## 'Rhode Island, It's For Me!'

Continued from Page 5

daughter of Doris and the late Gilbert Nolin of North Providence. She has a brother, David, of Cranston, and sister, Denise, who studied theatre at RIC until 1980 when she took an offer to go to New York City to begin her career.

She currently is in Manhattan on the PBS talk show, *Damn Right*, although from time to time she has returned to her native state for theatre productions.

In 1992 and '93 she appeared in *Nunsense* and *Nunsense II* and in 1995, *Rhody Burlesque*.

Patti majored in psychology with a minor in theatre. Her masters degree was in personality/ social psychology.

She appeared in RIC's summer Cabarets in 1982, 85 and 86. She did *Jacques Brel is Alive and Well and Living in Paris* in 1984 and had roles in other RIC Theatre productions, including *Tom Jones*, *Cinderella*, *Kiss Me Kate* and *Fiddler on the Roof*.

While a student, Patti served as coordinator of the Performing Arts Series under John Custer and found

that to be "a really great experience."

"John is a good mentor," asserts Nolin.

She also has high praise for the psychology department, which she says she "just loved." She says she nearly went to Northeastern for her master's degree, but because of the RIC psych department and an internship, she received she continued on at her alma mater.

Overall, one gets the impression that Nolin has fond remembrances of her days at RIC, enjoys her life as a career professional with Options and, certainly, enjoys very much her performances with the Follies.

Concerning the latter, she says, "It's almost like therapy. You can't be down when you're up on stage."

Despite her spoofs of Rhode Islanders and Rhode Island, Patti Nolin cherishes her home state.

As she often sings in the new state song, written for the Follies by Charlie Hall and Maria Day, "Rhode Island, It's For Me!"

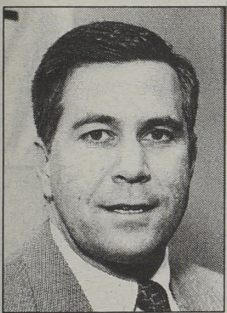


# RIC Athletics

## Tennis courts get first facelift in 25 years!



**RIBBON CUTTING:** Members of the women's tennis team helped President John Nazarian officially open the newly resurfaced tennis courts behind Whipple Hall on Sept. 23. Left to right are: Amanda Williams, Trish Haworth, the president, Kelley Lange, team captain, Lisa Gregoire, Nikki Garriepy and Joy Fox. (What's News Photo by Gordon E. Rowley)



### DONALD E. TENCER

director of intercollegiate athletics, intramurals  
and recreation

456-8007

## Weather advisory: Hurricane *RIC* on course to hit Florida!

The National Weather Service has issued a major weather advisory for the State of Florida during the first week of January. Though January is way beyond the normal hurricane season it appears that a major storm of hurricane strength will indeed make landfall on or around the first day of 1997.

This storm is peculiar in that it is not scheduled to take the normal hurricane track starting in a tropical area and moving north. This will be a reverse storm of major consequence, starting in the northeast area and moving south.

The storm will start to establish itself in late October and continually

gain strength through the months of November and December.

The hurricane will be named *RIC* and will be comprised of 30 or more smaller storms with names like Adams, Butler, Hopkins, Cook, Thomas, Siembab, Minikon, Econompoulos, Drape and NAZARIAN.

It is expected to have a profound affect as it moves through Florida on a collision course with several Florida colleges and Rhode Island College alumni.

Hurricane *RIC*, better known as the Rhode Island College men's and women's basketball teams, will be taking Florida by storm from Jan. 2 through 8 as

they play games in the Miami, St. Augustine and Orlando areas.

For those alumni living in Florida this will be the perfect opportunity for you to cheer on your alma mater and meet College President John Nazarian.

For those alumni who might be interested in joining the teams as they travel south, we have put together an extremely reasonable travel package.

More information will be featured in future issues of *What's News* but if you are interested in finding out more details about "HURRICANE *RIC*" contact the Athletic Department at (401) 456-8007 and batten down the hatches.



## Members of the 1992 and 1994 men's Championship tennis teams sought

The Athletic Department is currently trying to locate members of the College's 1992 and 1994 men's championship tennis teams. A number of student-athletes from those teams have still not received championship awards that were earned during those years and we would very much like to present them to you. If your name is listed below please call the Athletic Department (401) 456-8007.

Todd Lindsay, Toby Lindsay, David Ladoch, Brian Autote, Peter Burns, Kevin Ratte, Chris Fera, Greg Quirk, Derek Barden, Kyle Dionne, Kevin Fera, Bruce Weltin, Christian Cook, Jin Kye, Allan Fung, Jason Warren, Derek Barden, Steve White, Jason Warren, Steve White, Brad Levett, Scott Robert, Peter Prendergast, Jacques Branchaud.

## Sports Results

### Women's Volleyball

W	Johnston /Wales	3 to 1
W	WPI	3 to 0
W	Keane State	3 to 1
W	Suffolk Univ.	3 to 1

### Men's Soccer

L	Eastern Conn.	0 to 1
L	Plymouth State	1 to 4
L	Roger Williams	1 to 2

### Women's Soccer

L	Worcester State	0 to 4
L	Bryant College	1 to 2
W	Salve Regina	3 to 2

### Women's Tennis

#### 5th Grass Court Doubles Championship

W	U.Mass-Boston	8 to 1
W	Bridgewater	5 to 4
L	Bryant College	3 to 4



# October Series takes a look at 'Children in the Streets'

Rhode Island College's October Series, the annual college-wide look at socially provocative issues, is addressing the theme of "Children in the Street" with photographer Jim Goldberg's photos of runaway children serving as the focal point in an exhibition, "Raised by Wolves."

This exhibition, in Bannister Gallery from Oct. 10-Nov. 2, is one of many events taking place in the series.

Below is a calendar listing of the events continued from the last issue of *What's News*.

## Calendar of events

**Oct. 7, 2 p.m.** — Film *Los Olvidados* (*The Young and the Damned*) (Mexico 1950), Craig-Lee Hall 102.

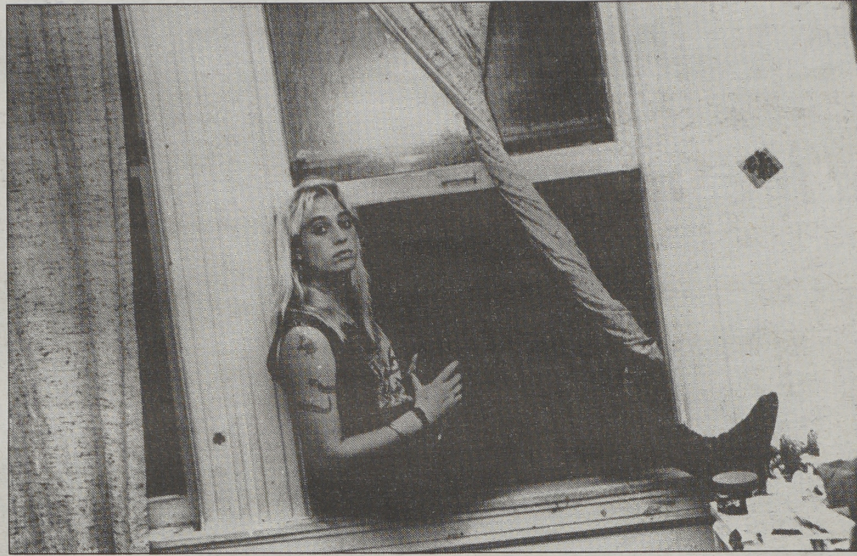
**Oct. 8, 7:30 p.m.** — Symposium and public forum on "Troubled Youth/Troubled Policy," Gaige Hall auditorium.

**Oct. 9, 2 p.m.** — Film *My Own Private Idaho* (U.S. 1991), Craig-Lee Hall 102.

**Oct. 9, 7:30 p.m.** — U.S. Senate debate on children's policy with candidates Jack Reed (D) and Nancy Mayer (R), Gaige Hall auditorium. Sponsored by the Rhode Island Campaign to Eliminate Childhood Poverty.

**Oct. 15, 2 p.m.** — Readings from *Runaways* with theatre Prof. P. William Hutchinson, Bannister Gallery.

**Oct. 15, 4 p.m.** — Slide show and discussion with English Prof. A. John Roche on children's literature



**CHILDREN IN THE STREET:** One of the subjects of artist/photographer Jim Goldberg's "Raised by Wolves" project can be seen in exhibit Oct. 10-Nov. 2 in Rhode Island College's Bannister Gallery. Regular gallery hours are Tuesday through Saturday, 11 a.m.-4 p.m. and Tuesday and Thursday evenings from 6-9.

and homelessness, Bannister Gallery.

**Oct. 16, 2 p.m.** — Discussion of Street Kids International outreach programs with Shawn Robertson of SKI Toronto. Also, Oscar-winning filmmaker Derek Lamb's animations, Karate Kids and Gold Tooth, Gaige Hall auditorium.

**Oct. 16, 5 p.m.** — Discussion with Chhem Sip of the Southeast Asian Youth and Development Project and

Mary Ann Bromley of the RIC School of Social Work on "Life in the Gang Line," Bannister Gallery.

**Oct. 17, 4 p.m.** — Lecture by Bruce Littky, Big Picture Company and the Annenberg Institute on "Saving Kids in Our Inner City Schools," Bannister Gallery.

**Oct. 18, noon** — Discussion with anthropology Prof. Carolyn Fluehr-Lobban on "Street Children in the Sudan," Bannister Gallery.

**Oct. 21, 4 p.m.** — Gallery talk by artist Jim Goldberg on his photography and the "Raised by Wolves" project, Bannister Gallery.

**Oct. 22, 2 p.m.** — Film *Pixote* (Brazil 1981) on street children in Brazil and discussion with Naomi Parker, Bannister Gallery.

**Oct. 23, 4 p.m.** — Discussion with Russell Potter of the English department on "Hip Hop and the Politics of Street Life," Bannister Gallery.

**Oct. 23, 7 p.m.** — Rap and hip hop music, choreography and videos by middle and high school students, "Runaway Train: Rapping About Life on the Streets," Gaige Hall auditorium.

**Oct. 25, 12:30 p.m.** — Film *Vagabond* (France 1985), Craig-Lee Hall 102.

**Oct. 28, 4 p.m.** — Discussion of video projects *Under Our Skin* and *Between the Cracks* with Paula Sepunik, "TOVA — Artistic Projects that Speak for Social Change," Bannister Gallery.

**Oct. 29, 7:30 p.m.** — Discussion on "Homeless for a Long Time" organized by R.I. Coalition for the Homeless and Travelers Aid, Bannister Gallery.

**Oct. 30, 5 p.m.** — Discussion by filmmaker Ariel Gamboa on his film *Por Ti Choices* about local Latino teens' street and gang life, Bannister Gallery.

**Oct. 31, 2 p.m.** — Film *Salaam Bombay* (India 1988), Bannister Gallery.

## RIC's Rhode Island Dances series to present Everett Dance Theatre's 'Body of Work' Oct. 11



**'BODY OF WORK'** by the Everett Dance Theatre is performed by (l to r) Ana Monteiro, Marvin Novogrodski, Walter Ferrero, Aaron Jungels, Rachael Jungels, Bravell Gracia and Eddie Silvestre. (Photo by Kris Craig)

Rhode Island's Everett Dance Theatre will perform its latest work, "Body of Work," in this season's Rhode Island Dances series opener at Rhode Island College on Friday, Oct. 11, at 8 p.m. in Roberts Hall auditorium.

"Recognized as one of our nation's most innovative and significant regional companies,

Everett Dance Theatre is known for its evening-length conceptual works that explore life issues with insight, humor and poignancy," according to RIC dance director Dante Del Giudice.

This feature performance follows the dance theatre's receipt of a 1996 New York Dance and Performance Bessie Award for outstanding creative achieve-

ment.

The *New York Times* has described "Body of Work" as "...an eloquent, beautifully realized piece that addresses work, workers and trade unionism in the United States, particularly the notion of the surplus worker."

Derived from a collaborative process of research and improvisation, the work utilizes text,

movement, props, video projection and "music that ranges from Bach to salsa to old union songs" to examine the fact and reality of employment as a defining element of modern existence.

Directed by Dorothy and Aaron Jungels, it will be performed by an expanded company that includes School-to-Work interns from Providence's Hope High School Magnet Arts Program.

Sharing the program will be two Providence youth dance groups who specialize in street dance forms, the 401 Boy Rockers and the Carriage House Flippers.

Both groups are associated with and receive the support of the Duncan Avenue Arts Collaborative, an umbrella arts organization which includes Everett Dance Theatre, the Carriage House Theatre and Carriage House School.

Tickets are \$12 with discounts for groups, senior citizens and students and may be purchased at the Roberts Hall box office or by calling 456-8060. For more information, call Del Giudice at 456-9791.

The Rhode Island Dances series presents concerts featuring Rhode Island's finest dance companies and independent artists. Now in its seventh season, the series receives substantial support from RIC and, in part, with student funding from the RIC Performing and Fine Arts Commission and the Rhode Island State Council on the Arts.



## Performing Arts Series —

# Tibetan National Song and Dance Ensemble performs Oct. 17

Some 60 performers in the Tibetan National Song and Dance Ensemble will take the stage in Rhode Island College's Roberts Hall auditorium Thursday, Oct. 17, for an 8 p.m. performance of traditional Tibetan music and dance.

Included will be folk dances, the Drummer's Dance, the Yak Horn Fiddle Dance as well as the traditional palace music known as Kalu, the famous and mysterious deep monotone chants and other worldly tones of the long trumpets. Separate prayer ceremonies conducted by Buddhist monks also will be heard.

Originating in the ancient city of Lhasa, Tibet, in 1959, the ensemble, under the artistic direction of the famous Tibetan musician and conductor E Zhu Duo Ji, was established to perform the three major styles of traditional Tibetan music, dance and theatre.

These three areas, known as folk style, traditional palace style and temple style, are all represented in the ensemble's first American tour. The ensemble has performed internationally, including engagements throughout the capitals of Europe, Australia and Asia.

It is under the patronage of His Holiness the XIV Dalai Lama, who, concerned with preservation of authentic Tibetan performing arts, established the Council for Religious and Cultural Affairs, under whose auspices the ensemble functions in Dharamsala, India.

The ensemble subsequently devel-



**TIBETAN NATIONAL SONG AND DANCE ENSEMBLE**, a company of 60, will take the stage in Roberts Hall auditorium in RIC's Performing Arts Series Thursday, Oct. 17, at 8 p.m.

oped a research department responsible for collecting traditional songs, dances and acting methods from within the Tibetan community.

In addition to the performers, a support staff includes skilled artisans who create the elaborate and colorful masks, costumes and instruments used in performances, thereby insuring the authenticity of the performance.

Their performance at RIC is the first of the Potpourri Series of the College's Performing Arts Series this season.

The Performing Arts Series is funded in part by contributions from the Rhode Island State Council on the Arts and the Performing and Fine Arts Commission at RIC.

Reserved-seat tickets are \$18 with discounts for senior citizens and stu-

dents and may be ordered in advance by telephone via Mastercard or VISA by calling 456-8194 from 10 a.m. to 4 p.m. daily. For in-person sales, the Roberts box office is open from 10 a.m. to 4:30 p.m. daily and up to the time of performance on Oct. 17.

For more information, call the Performing Arts Series office at 456-8194.

## Symphony orchestra concert Oct. 21

Rhode Island College Symphony Orchestra with violinist John Sumerlin and pianist Judith Lynn Stillman will perform in concert under the direction of Edward Markwork on Monday, Oct. 21, at 8:15 p.m. in Roberts Hall auditorium.

Shostakovich's "Festive Overture," Mendelssohn's Concerto for Violin, Piano and String Orchestra, Wagner's "Procession to the Cathedral" (from *Lohengrin*) and Hindemith's

*Mathis der Maler: Symphony* are on the program.

Tickets are \$7 with discounts for senior citizens and students and are available at the Roberts Hall box office on concert days. For further information call the RIC music department at 456-8244.

The concert is funded in part by grants from the RIC Performing and Fine Arts Commission, the Durand Agency, Walco Electric, Alexander Tomasso and two anonymous donors.

## Violinist Mireille Proulx in Chamber Music Series



**MIREILLE PROULX**

Violinist Mireille Proulx will perform her original compositions, accompanied by pianist Jeff Johnston, in the Wednesday, Oct. 9, Chamber Music Series in Rhode Island College's Roberts Recital Hall, Room 138, at 1 p.m.

Described as an "extraordinary young jazz violinist from Montreal" by series coordinator John Pellegrino, Proulx made her American debut in New York City this month.

"Although she is well known throughout Canada and Europe, this will mark her first attempt to win a following in the United States," Pellegrino says.

Her modern, innovative work has made fans of Dave Brubeck and Wynton Marsalis and, like Marsalis, she was trained in classical music but

loves jazz. She brings a background of Bach, Debussy and Ravel to her passion for the work of Bill Evans, Thelonious Monk and Stephane Grappelli.

Her performances of her own compositions are virtuoso events that also pay homage to the heritage of jazz, say her promoters.

A graduate of the Quebec Music Conservatory, she acquired professional experience as a classical violinist with such organizations as the Montreal Symphonic Orchestra, the Metropolitan Orchestra, and the touring orchestras of the Bolshoi and Royal London ballets. She has also accompanied Paul Anka, Johnny Mathis and Julio Iglesias.

The recital is free and open to the public.

## Theatre masters program luncheon



**THEATRE TALK:** Chatting about the RIC-Trinity Repertory collaboration in the Master-of-Fine-Arts program are (l to r) Prof. P. William Hutchinson, coordinator of the program; Donald Sheehan, an MFA student; Oskar Eustis, artistic director of Trinity Rep; President John Nazarian; Stephen Berenson and Brian McEleney, co-directors of Trinity Rep and just-appointed adjunct assistant professors of theatre at RIC, and Melinda Pinto, an MFA student. The occasion was the second annual luncheon in the President's Dining Room of Donovan Dining Center on Sept. 25 to welcome incoming MFA students. (What's News Photo by George LaTour)



# RIC CALENDAR

OCT. 7 – 21

**Tuesdays**

**Noon**—*Interfaith Bible Study*. The Chaplains’ Office offers interfaith Bible study on Tuesdays in the SU 300. Bring your lunch with you and join us for an informal discussion. Come anytime. All are welcome!

**Wednesdays**

**12:30 to 2 p.m.**—*Catholic Student Association*. The Chaplains’ Office offers a Catholic Student Association on Wednesdays in the SU 300. Food and drinks are provided. Come anytime. All are welcome!

**Month of October**

*Medical Drive for Travelers Aid Free Clinic*. Drop off items at S.O.S. lower DDC. These items will benefit free clinics at Travelers Aid.

**9 Wednesday**

**11 a.m. to 2 p.m.**—*VNA Flu Clinic* in SU Ballroom. Flu shots are \$10 per person (free with Medicare part B card). Open to the public. Hosted by Student Activities, 456-8034.

**1 p.m.**—*Chamber Music Series*. Mireille Proulx, violinist in Roberts Hall 138.

**1 p.m.**—*City Year Volunteer Opportunity Talk* in Student Activities Office, SU room 314. Hosted by SU Activities, 456-8034.

**2 p.m.**—Film: *My Own Private Idaho*. Directed by Gus Van Sant, 1991. Children on the Street Series in CL 102.

**8 p.m.**—Film: *Heat*. S tarring Al Pacino and Robert DeNiro. Student Film Society in Horace Mann 193. General admission \$2, RIC students \$1.

**8 p.m.**—*Psychic: Robert Channing* in DDC. Sponsored by RIC Programming, 456-8045. Free.

**10-Nov. 2**

**Art:** Jim Goldberg, “Raised by Wolves: Photographs and Documents of Runaways” Opening 7 to 9 p.m. Children on the Street Series in the Bannister Gallery.

**15 Tuesday**

**2 p.m.**—Literature: Reading from *Runaways*. P. William Hutchinson reads selections from Elizabeth Swado’s celebrated play. Children on the Street Series in Bannister Gallery.

**4 p.m.**—Lecture: “Children’s Literature and Homelessness” John Roche leads slideshow/discussion on Maurice Sendak’s haunting 1993 book, *We Are All in the Dumps* with Jack and Guy. Children on the Street Series in Bannister Gallery.

**16 Wednesday**

**4 to 6 p.m.**—*Fabric Painting Class*. Free/bring t-shirt or other fabric item. Sign up at SU Info Desk. Sponsored by Student Activities, 456-8034.

**17 Thursday**

**8 p.m.**—*The Tibetan National Song and Dance Ensemble*. in Roberts Hall Auditorium. Part of the Performing Arts Series. Reserved seating \$18, senior citizens and RIC faculty/staff \$16, non-RIC students \$14, RIC students \$5.

**18 Friday**

*Mini Golf Night*. Bus leaves SU at 2:30 p.m. \$3 tickets at SU Info Desk and Rec. Center. Includes games, transportation, and awards. Sponsored by RIC Rec. Center at 456-8400 and Student Activities, 456-8034.

**21 Monday**

**4 p.m.**—*Art: Jim Goldberg Lecture:* Artist discusses his photography and the “Raised by Wolves” project; introduction by Richard Weiner, dean of arts and sciences. Children on the Street Series in Bannister Gallery.

**8:15 p.m.**—*Music: RIC Symphony Orchestra* with John Sumerlin, violin, Judith Lynn Stillman, piano, and Edward Markward, conductor, in Roberts Auditorium. General admission \$7, senior citizens and non-RIC students \$5, RIC students free.

**19 Saturday**

**9 a.m. to 3 p.m.**—*Huge Yard Sale* near residence halls. Donations accepted or rent space for \$10. Call 456-8045 for information. Sponsored by RIC Programming.

**20 Sunday**

*Apple Picking*. Bus leaves at 2 p.m. and returns approximately 4:30 p.m. \$2. Tickets at SU Info Desk. Includes transportation and apple bag. Sponsored by Student Activities, 456-8034.

## Sports Events

**8 Tuesday**

**3:30 p.m.**—*RIC Women’s Tennis* at University of Mass-Dartmouth.  
**4 p.m.**—*RIC Men’s Soccer* vs. University of Massachusetts-Dartmouth. Home.

**9 Wednesday**

**4:30 p.m.**—*RIC Women’s Soccer* at Lasell College.

**10 Thursday**

**4 p.m.**—*RIC Women’s Tennis* at Roger Williams University.  
**7 p.m.**—*RIC Women’s Volleyball* vs. Eastern Nazarene College. Home.

**12 Saturday**

**1 p.m.**—*RIC Men’s Soccer* at University of Massachusetts-Boston.  
**1 p.m.**—*RIC Women’s Volleyball* at Plymouth State College.

**13 Sunday**

**Noon**—*RIC Women’s Soccer* at Western Connecticut State University.

**14 Monday**

**3:30 p.m.**—*RIC Women’s Tennis* at Springfield College.

**15 Tuesday**

**7 p.m.**—*RIC Women’s Volleyball* vs. Endicott College. Home.

**16 Wednesday**

**3:30 p.m.**—*RIC Men’s Soccer* vs. Johnson & Wales University. Home.  
**3:30 p.m.**—*RIC Women’s Tennis* at Salem State College.

**18 Friday**

**7 p.m.**—*RIC Women’s Volleyball* at Bryant College.

**19 Saturday**

**11 a.m.**—*RIC Women’s Cross Country* at Eastern Nazarene College.  
**Noon**—*RIC Men’s Cross Country* at Eastern Nazarene College.  
**Noon**—*RIC Women’s Soccer* vs. Plymouth State College. Home.  
**1 p.m.**—*RIC Men’s Soccer* at Eastern Nazarene College.  
**1 p.m.**—*RIC Women’s Volleyball* vs. Fitchburg State College/Regis College. Home.