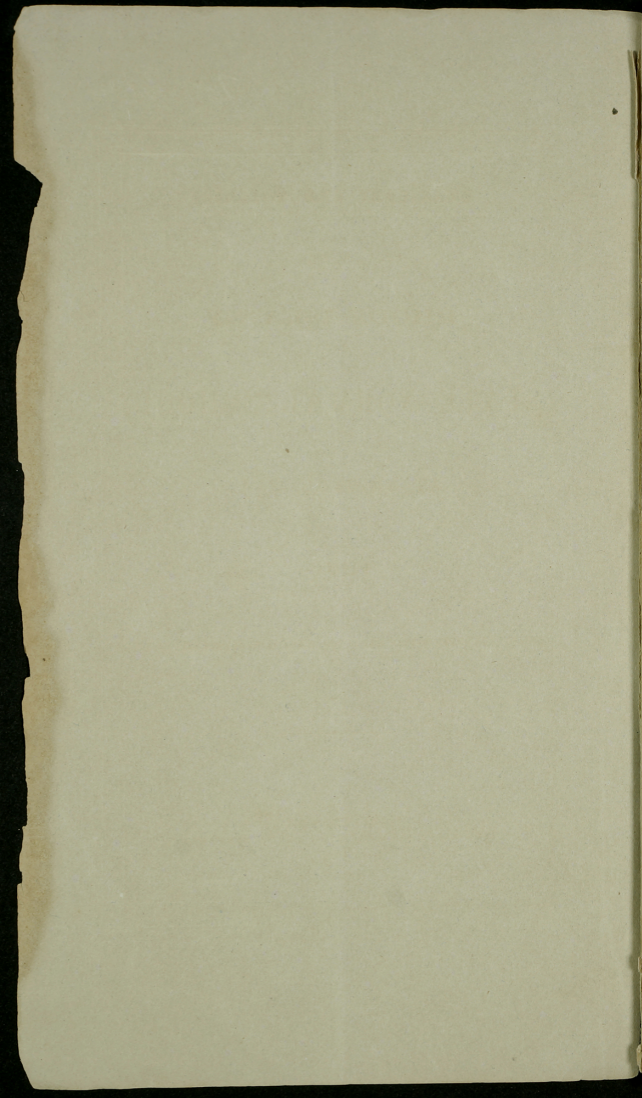


Catalogue and Circular  
OF THE  
RHODE ISLAND  
STATE NORMAL SCHOOL,  
AT BRISTOL, R. I.,  
1860.

ESTABLISHED AT PROVIDENCE, MAY 29, 1854; REMOVED TO BRISTOL SEPT. 15, 1857.

---

PROVIDENCE:  
KNOWLES, ANTHONY & CO., CITY PRINTERS.  
1860.



Catalogue and Circular

OF THE

RHODE ISLAND

STATE NORMAL SCHOOL,

AT BRISTOL, R. I.,

1860.

ESTABLISHED AT PROVIDENCE, MAY 29, 1854; REMOVED TO BRISTOL SEPT. 15, 1867.

PROVIDENCE:

KNOWLES, ANTHONY & CO., CITY PRINTERS.

1860.

General and Circular

BOARD OF TRUSTEES

His Excellency, THE GOVERNOR

STATE NORMAL SCHOOL  
His Honor, THE COMMISSIONER OF PUB. SCHOOLS  
(Ex-officio)

Rev. THOMAS SHEPARD, D. D.,  
Bristol, Vermont  
Term expires ..... 1882

Rev. JOHN BOYDEN,  
Woodsboro, Vermont  
Term expires ..... 1882

Hon. J. J. REYNOLDS,  
Wickford, Washington  
Term expires ..... 1881

Hon. S. G. ARNOLD,  
Middletown, Vermont  
Term expires ..... 1882

WILLIAM GODDARD, Esq.,  
Waterville, Maine  
Term expires ..... 1882

7

## BOARD OF TRUSTEES.

HIS EXCELLENCY, THE GOVERNOR.

*(Ex-officio.)*

HIS HONOR, THE COMMISSIONER OF PUB. SCHOOLS.

*(Ex-officio.)*

	RESIDENCE.	COUNTY.
REV. THOMAS SHEPARD, D. D.,	BRISTOL,	<i>Bristol.</i>
TERM EXPIRES.....		1862.
REV. JOHN BOYDEN,	WOONSOCKET,	<i>Providence.</i>
TERM EXPIRES.....		1863.
HON. J. J. REYNOLDS,	WICKFORD,	<i>Washington.</i>
TERM EXPIRES.....		1861.
HON. S. G. ARNOLD,	MIDDLETOWN,	<i>Newport.</i>
TERM EXPIRES.....		1862.
WILLIAM GODDARD, Esq.,	WARWICK,	<i>Kent.</i>
TERM EXPIRES.....		1863.

BOARD OF INSTRUCTION.  
CIRCULAR.

BOARD OF INSTRUCTION.

MR. JOSHUA KENDALL, PRINCIPAL.

MISS H. W. GOODWIN, } ASSISTANTS.  
MISS ELLEN LUTHER, }

## CIRCULAR.

---

The terms of this Institution consist of ten weeks each, and will commence as follows:

FIRST TERM, on the first Tuesday of May.

SECOND TERM, on Tuesday after the first Wednesday of September.

THIRD TERM, on the fourth Tuesday of November.

FOURTH TERM, on the second Tuesday of February.

Pupils are received at the commencement of each Term.

### CONDITIONS OF MEMBERSHIP.

All applicants must declare, *in writing*, their intention to qualify themselves for teachers in the State; they must present to the Principal a certificate of good moral character, and of such other personal qualifications as ought to be found in every instructor of the young. They must be, if males, at least sixteen, and if females, at least fifteen years of age. They must pass a satisfactory written and oral examination, by the Principal, in Reading, Writing, Spelling, Arithmetic, Geography, and English Grammar; and must remain in the School, at least, one full term. All candidates for admission must be at the school-room on the morning of the day *preceding* that on which the term commences, at 10 o'clock.

## COURSE OF STUDY.

The following is the course of study, without regard to the order in which the branches will be pursued, or the length of time devoted to them :

Geography, Physical and Political, with the use of globes and outline maps and map-drawing ; Orthography, Phonetic and Etymological Analysis ; English Grammar, with Analysis of Sentences ; Rhetorical Reading, including Analysis of Language, History of the English Language and Literature, and the critical study of select works ; Original Composition and other Rhetorical exercises ; Logic ; Writing, including Spelling, Paragraphing, Capitalizing, and Punctuation ; History of United States, Constitution of United States, Constitution of Rhode Island, and School Laws of Rhode Island, General History and Chronology, Natural History, Botany, Zoology, Chemistry and Astronomy ; Natural, Mental and Moral Philosophy ; Arithmetic ; Algebra ; Geometry ; Trigonometry ; Vocal Music ; The Art of Teaching, including the history and progress of education, the philosophy of teaching and discipline, as drawn from the nature of the juvenile mind and the application of those principles under the ordinary conditions of our common schools.

The studies of the School will be arranged, as far as possible, to meet the wants of teachers and of those intending to become such, including

- 1st. A thorough review of elementary studies.
- 2d. Those branches of knowledge which may be considered as an expansion of the elementary studies, or collateral to them.
- 3d. The art of teaching and its modes. Every subject of study and of lecture will be considered with reference to the best methods of teaching it.

Members of the advanced class will give teaching exercises before the whole school, each week, subject to the



public criticism of both teachers and pupils; and a series of familiar conversational lectures will be given, each term, on topics connected with the Teacher's Life and Duties.

#### CLASSES.

The pupils will be arranged according to their attainments, into three classes, designated as Junior, Middle and Senior.

#### EXAMINATIONS, ETC.

The School will be visited, each term, by a Visiting Committee of the Board of Trustees, when such examinations will be held as may seem desirable.

If at any time, pupils are in attendance, who, in the judgment of the Trustees, do not promise to be *useful as teachers*, they shall be deemed subject to dismissal.

The School is at all times open to inspection, and school visitors, teachers, and the friends of education generally, in this State, are cordially invited to visit it at their convenience.

#### LIBRARY.

The library of the School consists of nineteen hundred volumes of text-books and books of general reference, with maps, charts and globes.

#### TUITION.

TUITION IS FREE to all those who intend to teach in the Public Schools of Rhode Island; but those intending to teach in other States, or in private schools, are required to pay \$5 a term for tuition.

At the beginning of every term, each pupil pays \$1, to meet incidental expenses, and for the use of the library.

#### DISCIPLINE.

The discipline of the institution is committed to the Principal; but the age of the pupils, the objects which

bring them to a Normal School, and the spirit of the institution itself, will, it is believed, dispense with the necessity of a code of rules. The members are expected to exemplify in their own conduct, the order, punctuality and neatness of good scholars, and exhibit in all their relations, Christian courtesy, kindness and fidelity.

#### DIPLOMAS.

Diplomas will be awarded, at the discretion of the Trustees, to such pupils as shall have satisfactorily sustained themselves at the institution, for at least three full terms, two of which shall be consecutive.

#### BOARD.

Board, in private families, can be obtained at \$3 per week, for gentlemen, and \$2.50 for ladies. Boarding places will be secured in advance for those who apply to the Principal, by letter or otherwise. Students desiring to board themselves, can usually secure suitable rooms for the purpose.

#### MEANS OF COMMUNICATION.

Bristol, R. I., the present location of the School, is easy of access, both by railroad and steamboat; and for beauty and healthfulness is not surpassed by any town in New England.

Students who desire to pass regularly, every week or every day, over the Providence and Bristol Railroad, for the purpose of attending the Normal School, can obtain, through the Principal, season or package tickets at very low rates.

Pupils who desire to leave town for home, or for other places, are expected to confer with the Principal.

The Trustees of the Normal School deem it a matter for congratulation, both to the institution and the State, that they have secured to the office of Principal, a gentleman whose social and moral culture, intellectual attainments and large educational experience in normal teaching, furnish a sure guarantee of eminent success. The present assistants are favorably known in our community, and require no commendation.

The Trustees cannot too strongly urge upon every young person, preparing to teach, the advantages of normal school instruction. In no other way is it possible for the young teacher to be even with the times. The demand for normal school graduates, and the increasing sympathy of the community with these institutions, and the favorable impression made by such teachers upon the people where they labor, afford evidence of a most hopeful and gratifying character, of the increasing usefulness of this feature of our educational system.

#### MEANS OF COMMUNICATION

Bristol, R. I., the present location of the School, is easily of access, both by railroad and steamboat; and for beauty and healthfulness is not surpassed by any town in New England.

Students who desire to pass regularly every week or every day over the Providence and Bristol Railroad, for the purpose of attending the Normal School, can obtain through the Principal, season or package tickets at very low rates.

Pupils who desire to leave town for home, or for other places, are expected to confer with the Principal.

---

 CATALOGUE.
 

---

- David A. Adams, Jr., *Potsdam, St. Lawrence Co.,  
N. Y.*
- Edmund A. Angell, *Providence.*
- Denham Arnold, *Coventry.*
- John H. Arnold, *Portsmouth.*
- Almira G. Adams, *Bristol.*
- Effie Adams, *Bristol.*
- Esther H. Adams, *Holliston, Mass.*
- Harriet E. Adams, *Manville.*
- Mary P. Adams, *Providence.*
- Mary J. Aldrich, *Smithfield.*
- Sarah Aldrich, *Cumberland.*
- Juliett A. Allen, *Providence.*
- Annie C. Allyn, *Bristol.*
- Ann E. Andrews, *Providence.*
- Caroline F. Andrews, *Providence.*
- Amelia N. Angell, *Providence.*
- Julia E. Angell, *Providence.*
- Nancy M. Angell, *Chepachet.*
- Sarah E. Angell, *North Scituate.*
- Susan F. Angell, *Chepachet.*
- Lois Anthony, *Portsmouth.*

Mary E. Anthony, *Providence.*  
 Mary Arnold, *Providence.*  
 Sarah S. Arnold, *Douglas, Mass.*  
 Sarah R. Atwood, *Thompson, Conn.*  
 Annie E. Avery, *Providence.*

Byron M. Ballou, *Woonsocket.*  
 Charles E. Barney, *Bristol.*  
 George T. Barton, *Providence.*  
 Stephen A. Briggs, *Stonington, Conn.*  
 J. F. Brown, *Kingston.*  
 Joseph L. Browning, *Charlestown.*  
 William C. Burlingame, *Cumberland.*

Mary A. Babbitt, *Bristol.*  
 Austania M. Babcock, *Providence.*  
 Mary R. Babcock, *Charlestown.*  
 Mary E. Bailey, *West Greenwich.*  
 Almira B. Baker, *Pawtucket, Mass.*  
 Electa A. Baker, *Providence.*  
 Abby L. Ballou, *Cumberland.*  
 Anna Ballou, *Woonsocket.*  
 Laura Ballou, *Woonsocket.*  
 Martha A. Ballou, *Cumberland.*  
 Sarah M. Ballou, *Keene, N. H.*  
 Harriet A. Barnaby, *Providence.*  
 Hannah M. Barney, *Warren.*  
 Amelia Barrows, *Pawtucket, Mass.*  
 Ellen A. Bartlett, *Pawtucket, Mass.*  
 Emily L. Barton, *Providence.*  
 Mary S. Battey, *Cranston.*  
 Nancy S. Battey, *Burrillville.*  
 Augusta V. Baxter, *Bristol.*  
 Minnie B. Baxter, *Bristol.*

Lydia H. Belcher,	<i>Georgiaville.</i>
Clara E. Bensley,	<i>North Providence.</i>
Elizabeth W. Bensley,	<i>Providence.</i>
Mary B. Bensley,	<i>Pawtucket, Mass.</i>
Cornelia Benson,	<i>South Kingstown.</i>
Jane R. Bicknor,	<i>Warren.</i>
Anna Blake,	<i>Bellingham, Mass.</i>
Eleanor Bliss,	<i>Seekonk, Mass.</i>
Martha H. Bliss,	<i>Seekonk, Mass.</i>
Josephine F. Bourn,	<i>Attleboro', Mass.</i>
H. Eliza Bourn,	<i>Providence.</i>
Fanny W. Bowen,	<i>South Attleboro', Mass.</i>
Lucy A. Bowen,	<i>Providence.</i>
Isadora Brayton,	<i>Warwick.</i>
Elizabeth Briggs,	<i>Greenville.</i>
Addie Brown,	<i>Smithfield.</i>
Alice Brown,	<i>Johnston.</i>
Amy A. Brown,	<i>Johnston.</i>
Ann E. Brown,	<i>Tiverton.</i>
Elizabeth Brown,	<i>Smithfield.</i>
Emma T. Brown,	<i>Providence.</i>
Mary C. Brown,	<i>Framingham, Mass.</i>
Josephine L. Brown,	<i>Providence.</i>
Mary A. Brown,	<i>Johnston.</i>
Permelia U. Brown,	<i>Cranston.</i>
Amy S. Brownell,	<i>Portsmouth.</i>
Maria J. Brownell,	<i>Adamsville.</i>
Martha F. Brownell,	<i>Providence.</i>
Annie K. Bryant,	<i>Providence.</i>
Amy J. Bucklin,	<i>Pawtucket, R. I.</i>
Mary Buckley,	<i>Providence.</i>
Geraldine Buffington,	<i>Warren.</i>
Ruth Bullock,	<i>Bristol.</i>
Theresa Burke,	<i>Providence.</i>

Charles B. Carpenter,	<i>Brookfield, Mass.</i>
J. Foster Carr,	<i>Jamestown.</i>
Thomas B. Chapman,	<i>Westerly.</i>
Henry Clark,	<i>Pawtucket.</i>
George A. Clarke,	<i>Cranston.</i>
George A. Coggeshall,	<i>South Portsmouth.</i>
Peleg S. Coggeshall,	<i>South Portsmouth.</i>
J. E. R. Crandall,	<i>South Kingstown.</i>
William E. Crandall,	<i>South Kingstown.</i>
Eleanor S. Calder,	<i>Providence.</i>
Addie Capron,	<i>Providence.</i>
Frances A. Capron,	<i>Attleboro,' Mass.</i>
Sarah A. Capron,	<i>Providence.</i>
Mary E. Cary,	<i>Cooper, Me.</i>
Elizabeth B. Carpenter,	<i>Providence.</i>
Mary N. Carpenter,	<i>Cumberland.</i>
Maria A. Chaffee,	<i>Smithfield.</i>
Mary E. Chapin,	<i>Chicopee, Mass.</i>
Annie C. Chase,	<i>Portsmouth.</i>
Elizabeth J. Chase,	<i>Providence.</i>
Harriet N. Chase,	<i>Southbridge, Mass.</i>
Mary E. Chase,	<i>Providence.</i>
Maria A. Cheny,	<i>Olneyville.</i>
Amanda Church,	<i>Charlestown.</i>
Mary E. Church,	<i>Charlestown.</i>
Frances E. Cleveland,	<i>Providence.</i>
Lydia D. Colburn,	<i>West Roxbury, Mass.</i>
Harriet A. Colby,	<i>Providence.</i>
Marrietta Cole,	<i>Providence.</i>
Sarah L. Cole,	<i>Warwick.</i>
Catharine Comstock,	<i>West Wrentham, Mass.</i>
Ellen Comstock,	<i>West Wrentham, Mass.</i>
Sarah Comstock,	<i>West Wrentham, Mass.</i>

Hannah S. Condon,	
Martha R. Congdon,	<i>Cumberland.</i>
Mary F. Cook,	<i>Cumberland.</i>
Samantha M. Cook,	<i>Uxbridge, Mass.</i>
Sarah Cook,	<i>Cumberland.</i>
Hannah S. Cook,	<i>Holyoke, Mass.</i>
Elizabeth J. Cory,	<i>Providence.</i>
Ellen E. Cornell,	<i>Providence.</i>
Eliza J. Corscaden,	<i>Providence.</i>
Mary E. Cunliff,	<i>Sutton, Mass.</i>
Emily Cushing,	<i>Providence.</i>
Phebe A. Cutting,	<i>Smithfield.</i>
Edward Dawley,	<i>Bristol.</i>
Stephen G. Davis,	<i>Westport, Mass.</i>
Hope R. Daggett,	<i>Bristol.</i>
Sarah E. Damoth,	<i>Providence.</i>
Ruth A. Dana,	<i>Valley Falls.</i>
Emily Danielson,	<i>West Killingly, Conn.</i>
Maria J. Darling,	<i>Blackstone, Mass.</i>
Evalyn C. Darling,	<i>Bristol.</i>
Charlotte A. Douglass,	<i>Fall River, R. I.</i>
Addie E. Davis,	<i>Pawtucket, R. I.</i>
Elizabeth R. Davis,	<i>Providence.</i>
Hariett B. Davoll,	<i>Fall River.</i>
Martha W. Dean,	<i>Providence.</i>
Lucy M. Delano,	<i>Bath, Me.</i>
Elizabeth P. DeWolf,	<i>South Kingstown.</i>
Elizabeth Dorrell,	<i>Providence.</i>
Frances P. Dustin,	<i>Providence.</i>
Clinton O. Evans,	<i>Gloicester.</i>



Mary E. Earl,	<i>Pascoag.</i>
Amanda Eddy,	<i>Providence.</i>
Anna E. Edmonds,	<i>Providence.</i>
Mary A. Emery,	<i>Portsmouth.</i>
Mary E. Enches,	<i>Smithfield.</i>
Maria Essex,	<i>Providence.</i>
Susan Essex,	<i>Providence.</i>
Abby A. Evans,	<i>Providence.</i>
Hannah R. Evans,	<i>Glocester.</i>
Sophia W. Evans,	<i>Providence.</i>
Samuel D. Fox,	<i>Tuostonboro', N. H.</i>
Mary E. Farnham,	<i>North Providence.</i>
Julia Farnham,	<i>Smithfield.</i>
Mary M. Farnham,	<i>Westerly.</i>
Juliet Farnham,	<i>Smithfield.</i>
Esther Fenner,	<i>South Scituate.</i>
Almira Field,	<i>Providence.</i>
Eliza M. Field,	<i>Scituate.</i>
Caroline C. Fielden,	<i>Great Falls, N. H.</i>
Jane I. Flagg,	<i>Providence.</i>
Eliza A. Forrest,	<i>Providence.</i>
Emily R. Foster,	<i>Warren.</i>
Laura B. Foster,	<i>Providence.</i>
Mary M. Foster,	<i>Johnston.</i>
Rebecca M. Foster,	<i>Johnston.</i>
Augusta H. Freeborn,	<i>Bristol.</i>
Ella S. Freeborn,	<i>Providence.</i>
Mary E. Frost,	<i>Providence.</i>
Mary E. Fuller,	<i>South Attleboro', Mass.</i>
Allen Gardiner,	<i>Jamestown.</i>
Thomas W. Gardner,	<i>Warwick.</i>

Nathan B. Gardner,	<i>Warren.</i>
Charles H. Gooding,	<i>Bristol.</i>
Edward A. Goodwin,	<i>Mansfield, Mass.</i>
Angeline Gardner,	<i>Tiverton.</i>
Esther P. Gardiner,	<i>Providence.</i>
Sarah E. Gardiner,	<i>Providence.</i>
Seraphine A. Gardner,	<i>Providence.</i>
Elizabeth C. Gifford,	<i>Sandwich, Mass.</i>
Catharine M. Gladding,	<i>Providence.</i>
Sarah T. Godfrey,	<i>Providence.</i>
Hannah W. Goodwin,	<i>Providence.</i>
Harriet L. Goodwin,	<i>Mansfield, Mass.</i>
Mary J. Goodwin,	<i>Mansfield, Mass.</i>
Amelia A. Gould,	<i>Providence.</i>
Catharine F. Gould,	<i>Middletown.</i>
Adeline C. Grant,	<i>Bellingham, Mass.</i>
Martha E. Grant,	<i>Bellingham, Mass.</i>
Peace C. Gray,	<i>Tiverton.</i>
Eliza Greene,	<i>Glocester.</i>
Mary E. Greene,	<i>Apponaug.</i>
Abbie H. Griffin,	<i>Charlestown.</i>
Frances Gruber,	<i>Providence.</i>
Martha A. Guy,	<i>Cambridgeport, Mass.</i>
Samuel W. Hale,	<i>Olneyville.</i>
John B. Hambly,	<i>Portsmouth.</i>
Arland S. Harding,	<i>Cumberland.</i>
Earl C. Harris,	<i>Providence.</i>
George J. Hazard,	<i>South Kingstown.</i>
Charles R. Hicks,	<i>Tiverton.</i>
Eli H. Howard,	<i>Gayhead, Green Co., N. Y.</i>
John K. Hull,	<i>South Kingstown.</i>

Martha W. Hall,	<i>Providence.</i>
Mary A. B. Hambly,	<i>Portsmouth.</i>
Celia L. Hammond,	<i>Providence.</i>
Irena A. Handel,	<i>Hopkinton.</i>
Mary C. Harris,	<i>Providence.</i>
Elizabeth B. Haskell,	<i>Cumberland.</i>
Belinda O. Hathaway,	<i>Pawtucket.</i>
Almira L. Hayward,	<i>Foxboro', Mass.</i>
Harriet C. Hazard,	<i>Westerly.</i>
Lydia C. Hazard,	<i>Popular Ridge, Cayuga Co.,</i> <i>N. Y.</i>
Harriet J. Helme,	<i>Providence.</i>
Mary E. Hendrick,	<i>Warren.</i>
Mary J. Hendrick,	<i>Smithfield.</i>
Charlotte R. Heyden,	<i>Cumberland.</i>
Clarinda E. Hill,	<i>Scituate.</i>
Charlotte M. Hodges,	<i>Providence.</i>
Elizabeth C. Hopkins,	<i>North Foster.</i>
Julia M. Hopkins,	<i>Providence.</i>
Lucy E. Hopkins,	<i>North Foster.</i>
Charlotte R. Hoswell,	<i>Providence.</i>
Jennie Hoswell,	<i>Pawtucket.</i>
Susan F. Howland,	<i>Providence.</i>
Abbie E. Hoxie,	<i>Charlestown.</i>
Fannie G. Hoxie,	<i>South Kingstown.</i>
Mary L. Hoxie,	<i>Charlestown.</i>
Harriet K. Hull,	<i>South Kingstown.</i>
Catharine Hyndes,	<i>Providence.</i>
Mary T. Irons,	<i>Providence.</i>
Amanda T. Irwin,	<i>Providence.</i>
Fannie M. Jackson,	<i>Newport.</i>
Olive T. Jacobs,	<i>Pawtucket.</i>

Hannah M. Jenks,	<i>Foster.</i>
Mary L. Jenks,	<i>Pawtucket.</i>
Caroline A. Jones,	<i>Cranston.</i>
Mary W. Jones,	<i>Newport.</i>
Charles F. Knowles,	<i>Wakefield.</i>
George H. Knowles,	<i>South Kingstown.</i>
Horatio N. Knowles,	<i>Wakefield.</i>
Henrietta A. Keighn,	<i>South Scituate.</i>
Lucy Kellogg,	<i>Providence.</i>
Elizabeth J. Kempton,	<i>North Fairhaven, Mass.</i>
Mary C. Kinsley,	<i>Mendon, Mass.</i>
Emma Knowles,	<i>South Kingstown.</i>
Rosamond R. Leavens,	<i>Providence.</i>
Mary A. Lee,	<i>Providence.</i>
Helen J. LeGro,	<i>Great Falls, N. H.</i>
Ann C. Lippitt,	<i>Providence.</i>
Ellen P. Liscomb,	<i>Bristol.</i>
Abbie F. Littlefield,	<i>North Providence.</i>
Caroline C. Luther,	<i>Bristol.</i>
Chlora A. Luther,	<i>North Scituate.</i>
Ellen R. Luther,	<i>Bristol.</i>
Harriet B. Luther,	<i>Bristol.</i>
Susan J. Luther,	<i>Bristol.</i>
Frances M. Lyon,	<i>West Killingly, Conn.</i>
Sarah A. Lyon,	<i>Providence.</i>
Ambrose B. Mason,	<i>Bristol.</i>
Harvey Maxfield,	<i>Meredith, N. H.</i>
Robert I. Moore,	<i>Providence.</i>
Gilford Morse,	<i>Sharon, Mass.</i>

Matilda R. Magill,	<i>New Hope, Penn.</i>
Caroline E. Makepeace,	<i>Attleboro', Mass.</i>
Abbie H. Manchester,	<i>Little Compton.</i>
Mary E. Manchester,	<i>Providence.</i>
Susan A. Manchester,	<i>Tiverton.</i>
Ellen C. Martin,	<i>Wrentham, Mass.</i>
Hannah P. Martin,	<i>Warren.</i>
Phebe M. Martin,	<i>Seekonk, Mass.</i>
Sara E. Martin,	<i>Providence.</i>
Sarah C. Martin,	<i>Seekonk, Mass.</i>
Esther A. Mason,	<i>Pawtucket, R. I.</i>
Marianna Mason,	<i>Pawtucket, R. I.</i>
Sarah L. Mason,	<i>Providence.</i>
Martha M. Matteson,	<i>Pawtucket, Mass.</i>
Mary C. Mathewson,	<i>Foster.</i>
Helen Miller,	<i>Fruit Hill.</i>
Mary E. Millard,	<i>Providence.</i>
Lorana Morrill,	<i>Westminster, Mass.</i>
Harriet E. Morrill,	<i>Great Falls, N. H.</i>
Mary R. Morse,	<i>Bristol.</i>
Lydia R. Mott,	<i>New Shoreham.</i>
Isidora W. Munroe,	<i>Bristol.</i>
Martha S. Nash,	<i>Seekonk, Mass.</i>
Maria E. Nason,	<i>Warwick.</i>
Eliza W. Needham,	<i>Pawtucket.</i>
Leonis M. Needham,	<i>Providence.</i>
Harriet Newell,	<i>Woonsocket.</i>
Helen A. Nichols,	<i>Providence.</i>
Mary F. Norris,	<i>Bristol.</i>
Mary P. Norton,	<i>Providence.</i>
Catherine E. Norwood,	<i>Pawtucket.</i>
Caroline F. Osborne,	<i>Providence.</i>

Lyford G. Peavey,	Tuftonboro', N. H.
Asa G. Piper,	Tuftonboro', N. H.
Levi T. Piper,	Tuftonboro', N. H.
Charles C. Pollock,	South Kingstown.
Mary Padelford,	Providence.
Julia A. Paine,	Smithfield.
Lydia A. Paine,	Providence.
Minerva J. Paine,	Smithfield.
Susan Paine,	Smithfield.
Harriet L. D. Palmer,	Providence.
Patience A. Palmer,	Providence.
Sarah M. Palmer,	Providence.
Margaretta E. Palmgreen,	Providence.
Maria F. Parker,	Providence.
Elizabeth Passmore,	Providence.
Louise Passmore,	Providence.
Sipheantus Patterson,	South Scituate.
Isabel F. Pearce,	Bristol.
Harriet L. Peaslee,	Haverhill, Mass.
Sarah G. Peavey,	Providence.
Helen L. Peck,	Bristol.
Phebe A. Peckham,	Smithfield.
Rebecca C. Peckham,	Bristol.
Ruby A. Pearce,	Providence.
Sarah E. Perry,	North Providence.
Alsie H. Phillips,	Providence.
Ermina H. Pollard,	Providence.
Annie E. Porter,	Freetown, Mass.
Harriet E. Porter,	Providence.
Lydia Potter,	Johnston.
Cornelia B. Pratt,	Cranston.
Charles N. Rood,	Cumberland.

Harriet C. Randall,	<i>Providence.</i>
Mary Randall,	<i>Providence.</i>
Mary A. Randolph,	<i>Trenton, N. J.</i>
Sarah A. Rawcliffe,	<i>Cranston.</i>
Elnora Read,	<i>Providence.</i>
Mary E. Reid,	<i>Elmwood.</i>
Ann F. Rhodes,	<i>Providence.</i>
Mary T. Richardson,	<i>Providence.</i>
Ellen L. Robinson,	<i>Foxboro', Mass.</i>
Henry B. Scott,	<i>Cumberland.</i>
Abiel W. Sherman,	<i>Fall River, Mass.</i>
Moses B. Sherman,	<i>South Kingstown.</i>
Joseph Skidmore,	<i>Providence.</i>
George E. Southwick,	<i>Charlton, Mass.</i>
Gilbert A. Sweet,	<i>Greenville.</i>
John B. Sweet, Jr.,	<i>Bristol.</i>
Eldora F. Salisbury,	<i>Warren.</i>
Susan L. Salisbury,	<i>Warren.</i>
Mary Salmon,	<i>Providence.</i>
Annie F. Saunders,	<i>Providence.</i>
Emeline A. Sayles,	<i>Providence.</i>
Laura C. Sayles,	<i>Providence.</i>
Hester Scholfield,	<i>Providence.</i>
Harriet N. Scott,	<i>Providence.</i>
Mary Selden,	<i>Providence.</i>
Sarah Shaw,	<i>Providence.</i>
Maria C. Shepard,	<i>Bristol.</i>
Alice A. Sherburne,	<i>West Wrentham, Mass.</i>
Marion L. Sherburne,	<i>West Wrentham, Mass.</i>
Harriet E. Sherman,	<i>Pawtucket, R. I.</i>
Harriet S. Sherman,	<i>South Kingstown.</i>
Annie H. Shurtliff,	<i>Warren.</i>

Eliza F. Shurtliff,	<i>Warren.</i>
Emma T. Slocum,	<i>Cranston.</i>
Adaline P. T. Smith,	<i>Providence.</i>
Eliza Smith,	<i>Providence.</i>
Elmy A. Smith,	<i>Cranston.</i>
Harriet Smith,	<i>N. Scituate.</i>
Harriet N. Smith,	<i>Providence.</i>
Helen M. Smith,	<i>Millville, Mass.</i>
Lois L. Smith,	<i>Pawtucket, R. I.</i>
Ellen M. Snow,	<i>Providence.</i>
Emma Southwick,	<i>Millville, Mass.</i>
Nancy A. Southwick,	<i>Millville, Mass.</i>
Almira Spaulding,	<i>Providence.</i>
Lydia L. Spencer,	<i>Warwick.</i>
Sarah J. Spencer,	<i>Warwick.</i>
Helen F. Sprague,	<i>Providence.</i>
Mary A. Sprague,	<i>Sutton, Mass.</i>
Sarah J. Sprague,	<i>Pawtucket, R. I.</i>
Rachel B. Stanfield,	<i>Pascoag.</i>
Delia M. Stanley,	<i>South Attleboro', Mass.</i>
Kate S. Stanton,	<i>Charlestown.</i>
Mary E. Stanton,	<i>Charlestown.</i>
Frances M. Steer,	<i>N. Providence.</i>
Laura Steer,	<i>N. Providence.</i>
Margaret A. Stevens,	<i>Lawrence, Mass.</i>
Anjenette Stone,	<i>Providence.</i>
Emma E. Suesman,	<i>S. Providence.</i>
Daniel E. Teft,	<i>South Kingstown.</i>
Caleb A. Tillinghast,	<i>Foster.</i>
Leonard A. Tillinghast,	<i>Coventry.</i>
Pardon E. Tillinghast,	<i>West Greenwich.</i>
Stephen Tourtellotte,	<i>West Scituate.</i>
Thomas T. Tucker,	<i>Charlestown.</i>



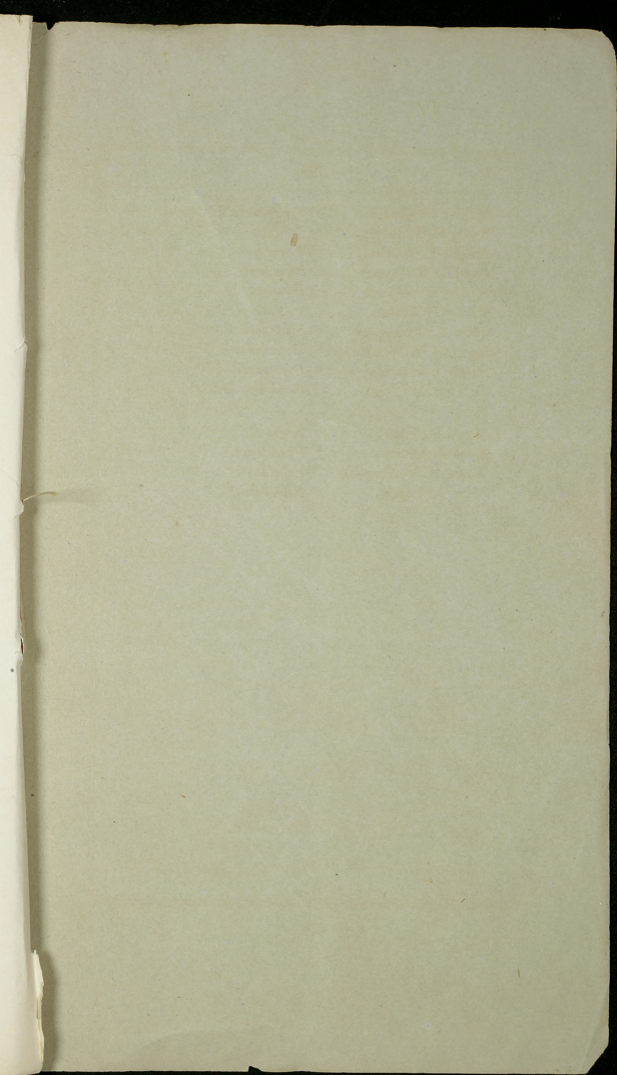
- Charlotte A. Taber, *Providence.*  
 Fannie A. Taber, *Providence.*  
 Jane H. Taber, *Providence.*  
 Lydia R. Taber, *New Bedford, Mass.*  
 Sarah J. Taber, *Providence.*  
 Emma A. Taft, *Providence.*  
 Asenath Tetlow, *Providence.*  
 Isabel B. Thompson, *Bristol.*  
 Eunice A. Tingley, *Providence.*  
 Alzada Tourtellotte, *West Scituate.*  
 Samondess Tourtellotte, *Scituate.*  
 Sarah N. Tower, *Pawtucket.*  
 Lydia W. Tucker, *Manville.*  
 Clementine Tweedy, *Providence.*  
 Harriet A. Tyler, *Attleboro,' Mass.*  
  
 Henry A. Weld,  
 Hassam O. Whiting, *Valley Falls.*  
  
 Elizabeth F. Walden,  
 Hannah B. Waldron, *Bristol.*  
 Louise B. Warren, *Bristol.*  
 Lucy M. Waterman, *Galena, Ill.*  
 Elizabeth P. Watson,  
 Mary E. Watson, *Newport.*  
 Adelaide C. Weeden, *Pawtucket.*  
 Adah D. Westcott,  
 Mary F. Westcott,  
 Sarah E. Westcott,  
 Mary E. Whipple,  
 Rosalitha A. Whipple, *Cumberland.*  
 Nancy A. Whitford,  
 Dency A. Wilbor, *Smithfield.*

Mary S. Wilber,	<i>Tiverton.</i>
Emily E. Wilbour,	
Amelia E. Wilcox,	<i>Westerly.</i>
Candace G. Wilcox,	<i>Providence.</i>
M. Helen Willard,	<i>Warwick.</i>
Emily T. Winsor,	<i>Providence.</i>
Julia A. Winsor,	<i>Smithfield.</i>
Lucretia E. Winsor,	<i>Greenville.</i>
Susan J. Winship,	<i>Providence.</i>
L. Augusta Wood,	<i>Gardiner, Mass.</i>
Maria E. Yeaw,	<i>Scituate.</i>
Eliza J. Yeomans,	<i>Providence.</i>
Annie M. Yerrington,	<i>Providence.</i>
Mary A. Young,	<i>Smithfield.</i>

1880

ESTABLISHED AT PROVIDENCE MAY 20, 1824, REMOVED TO RHODES BLDG. N. 202

PROVIDENCE  
 KNOWLES, ANTHONY & CO., CITY PRINTERS  
 1880.



0.0/3/1