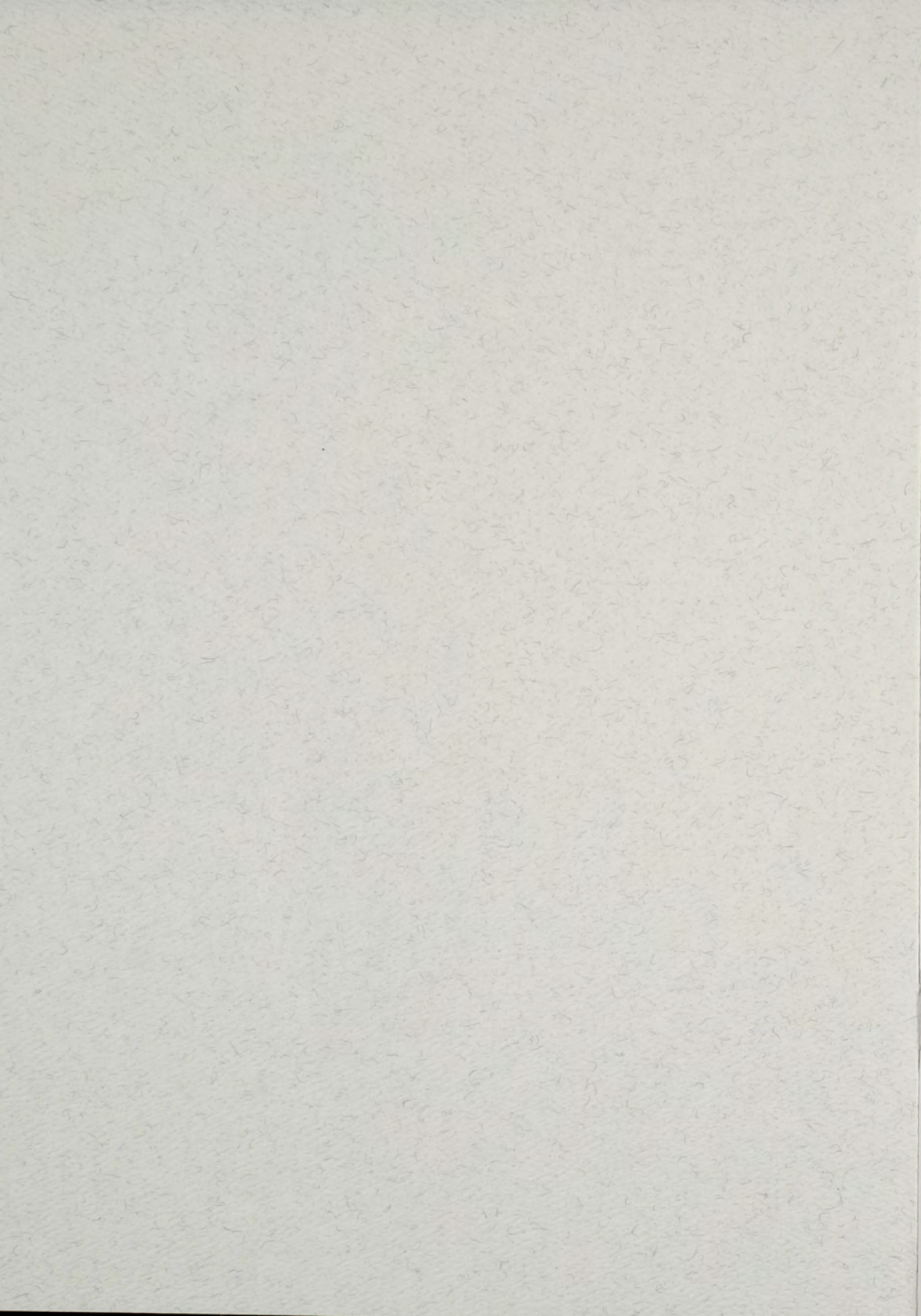


COMMENCEMENT

SPRING 2006





COMMENCEMENT

SPRING 2006

Rhode Island College Campus

SCHOOL OF GRADUATE STUDIES

Thursday, the eighteenth of May
5:30 p.m.

BACCALAUREATE DEGREES

Saturday, the twentieth of May
9:30 a.m.

COMMENCEMENT EXERCISES
ADVANCED DEGREES
Thursday, the eighteenth of May

Processional

Academic Processional... Arthur Frackenpol
Grand Processional... Donald Hadad

Opening of the Ceremony

John Nazarian
President of the College

The National Anthem

Amanda Hopkins
Vocalist

Invocation

Larry A. Nichols
Chaplain, Rhode Island College

Greetings

Daniel J. Ryan
Board of Governors for Higher Education

Conferring of Honorary Degrees

Candidates presented by

Dan L. King

Vice President for Academic Affairs

Diane Postoian '76

Doctor of Fine Arts

George S. Lima

Doctor of Public Service

Stanley M. Aronson, M.D.

Doctor of Humane Letters

Address to the Graduates

Stanley M. Aronson, M.D.

Founding Dean, Brown University School of Medicine

Conferring of Advanced Degrees

Candidates presented by

James H. McCroskery

Assistant Vice President for Academic Affairs

Closing of the Ceremony

Recessional

Festival Prelude... Alfred Reed

Musical Selections

The American Band

Eugene Pollart, Director

A reception immediately following the Commencement exercises will be held in the Fred J. Donovan Dining Center, where diplomas will be available.

Faculty and graduates of the School of Social Work will gather at the School of Social Work Atrium.



DIANE POSTOIAN '76

Doctor of Fine Arts

A 1976 graduate of Rhode Island College, Diane Postoian is a well-known performer and arts educator who for seventeen years served as the moving force behind the growth and success of Looking Glass Theatre, a Providence-based children's theatre. During her tenure with the nonprofit Looking Glass Theatre, she served as artistic director, executive director, grant writer, program director, and performer, and also served as camp director for Looking Glass Arts Camp, a four-week program for sixty campers aged six to fifteen. Under her leadership, Looking Glass Theatre grew into an organization that put on performances for as many as 90,000 children a year. She has maintained a strong relationship to her alma mater and has served as mentor for theatre students at Rhode Island College throughout the years.

Now retired from Looking Glass Theatre to concentrate on her performing career, Postoian continues to inspire audiences of all ages with her work.

She has served as a motivational speaker for children and professionals who work with children, she has developed a touring program for adolescents entitled "Fight the Hype," which is designed to promote media awareness, she has developed "Story Theatre" for school and family groups, and she has developed a kindergarten-through-grade-five touring classroom workshop entitled "Acting Naturally About Reading." At the Robert L. Bailey IV Elementary School in Providence, Postoian was responsible for designing kindergarten-through-grade-two language arts classroom workshops.

Postoian has served as creative writing teacher with the Brown University Learning Community, she has developed a Saturday morning children's series, she has conducted summer literacy programs for the Providence School Department, and she has worked with Very Special Arts RI and Very Special Arts Massachusetts. She has served as a guest instructor at Providence College on the topic of creative drama in elementary education curriculum. She has also served as site coordinator for School One, an alternative high school in Providence at which she established a job placement program for adolescents.

Earlier in her career, Postoian was a creative dramatist who taught multidisciplinary arts programs for kindergarten-through-grade-six youth and creative writing for ESL students in New York City's Chinatown at the behest of the New York City Department of Cultural Affairs and the New York State Arts Council. She also served as assistant director at the Washington Market Preschool in New York, where she was responsible for the year-round education and supervision of over one hundred, three-to-five-year-old children.

Ms. Postoian has been recognized for her work with the Jabez Gorham Award for Arts Excellence presented by the Arts and Business Council of Rhode Island. She has received numerous competitive grants for her work, including an Arts Exposure grant from New York City to promote reading and creative writing in ESL classroom settings, as well as other education and performance grants from the state arts councils of New York, Massachusetts, and Rhode Island.



GEORGE S. LIMA

Doctor of Public Service

George S. Lima's life, which is profiled in the documentary film *Black Men Can Fly*, demonstrates a lifelong commitment to social justice and economic opportunity. His résumé includes the roles of political activist, labor leader, lawmaker, and serviceman, as one of World War II's legendary Tuskegee Airmen.

Lima, a Fall River native and son of Cape Verdean immigrants, joined the military in 1942 as a cadet at the Tuskegee Army Base in Alabama. In 1945 Lima and other black Air Corps officers were arrested for attempting to enter a white officer's club at a base in Indiana. Because of the incident, the Army ordered the base's clubs to be integrated.

Lima was educated at North Carolina A&T State University, Ohio State University, and the University of Louisville. He earned his B.A. at Brown University in 1948. While at Brown, he founded a chapter of Omega Psi Phi. He would later attend the American Leadership Seminar at Harvard University and also attend Harvard Business School.

Professionally, he was Rhode Island state director of the federal ACTION program and also worked for ACTION in Boston. Additionally, Mr. Lima was employed as an urban coordinator and program development specialist for the VISTA Office of Economic Opportunity in New York and Washington, D.C.

As a leader in organized labor, Lima served as the New England regional director of the American Federation of State, County, and Municipal Employees (AFSCME) AFL-CIO and also served as special assistant to the national director. Lima has also served as consultant and conciliator for the Laborers International Union of North America, AFL-CIO.

Lima was elected to two terms as State Representative from District 83, East Providence. A member of the House Labor Committee, he was instrumental in the enactment of legislation requiring the participation of minority-owned businesses in bidding for state contracts.

He served as president of the Providence Chapter of the NAACP, as vice president of the East Providence Community Development Corporation, as chair of the East Providence Coalition for Human Rights, on the Executive Board of Citizens United for Fair Housing, as a member of the United Way Social Development Allocation Committee, as a board member of the National Catholic Council for Interracial Justice, and as a member of the Organizing Committee of the Congress for Racial Equality, among others.

Lima's most recent project is his founding of the Black Air Foundation, a nonprofit organization for which he serves as CEO and president. The word "air" is both literal and symbolic, as the mission of the organization is to provide opportunities for black and minority youth to advance socially and economically by introducing them to aviation, radio and television (airwaves), and filmmaking as career choices, while also providing other support.

Mr. Lima is fluent in four languages and is a world traveler. He was married to Selma (Boone) Lima for 55 years until she passed away, and has three children, seven grandchildren, and seven great grandchildren.



STANLEY M. ARONSON, M.D.

Doctor of Humane Letters

Stanley M. Aronson is a physician, educator, lecturer, historian, and author. The founding dean of the Brown Medical School, Dr. Aronson's essays, published weekly in *The Providence Journal*, combine elements of history, science, philosophy, and medicine and have both delighted and informed readers.

A native of New York City, Aronson was educated at City College of New York, New York University College of Medicine, and Harvard University School of Public Health. His hospital training included service at Bellevue Hospital; Sydenham Hospital; the U.S. Veterans Administration Medical Center, Kingsbridge; the Memorial Sloan-Kettering Center for Cancer, and Mount Sinai Hospital, all in New York City, as well as the Armed Forces Institute of Pathology in Washington, D.C.

He has served on the faculty of Columbia University, College of Physicians and Surgeons; State University of New York, Downstate Medical Center; and at the Brown University School of Medicine. He has also served as visiting professor and adjunct faculty at institutions around the world, including Mexico, Brazil, Canada, England, Israel, and India, as well as institutions closer to home, such as Yale, Dartmouth, Tufts, and Rhode Island College.

Dr. Aronson's hospital appointments have included chief of pathology and director of Department Laboratories at Kings County Hospital Center; neuropathologist and research neurologist at Kingsbrook Jewish Medical Center, and pathologist-in-chief at the Miriam Hospital in Providence. He has also been a consulting physician at twelve different hospitals. A veteran of the armed forces, Dr. Aronson served in the U.S. Army Medical Corps, attaining the rank of Captain.

His professional service includes the American Academy of Neurology, the American Public Health Association, the American Academy of Cerebral Palsy, the International Society of Neuropathology, the Rhode Island Medical Society, the Association of American Medical Colleges Council of Deans, the National Academy of Sciences, the National Multiple Sclerosis Society, the National Foundation for Neuromuscular Diseases, the Committee to Combat Huntington's Disease, the Medical Advisory Committee of Planned Parenthood of Rhode Island, the National Tay Sachs and Allied Diseases Association, and others.

Dr. Aronson's community service includes numerous board memberships, corporation memberships, trusteeships, and other leadership positions in institutions and organizations, such as Butler Hospital, Women and Infants Hospital, Hospice Care of Rhode Island, the Jewish Federation of Rhode Island, the Jewish Home for the Aged, Interfaith Health Care Ministries, and others.

A prolific author, Dr. Aronson has published over 400 books as well as scientific articles and chapters in medical and biological journals and texts. He has also served on the editorial boards of several professional journals.

His service has been recognized with numerous awards and honors, including the Charles Hill Award from the Rhode Island Medical Society, the Sturgis Award from the Hospital Association of Rhode Island, the Founder's Award from Hospice Care of Rhode Island, and the John H. Chafee Award from the American Heart Association. He is also a member of the Rhode Island Heritage Hall of Fame and holds an honorary doctorate from Tougaloo College of Mississippi.

**Doctor of Philosophy
in Education**

Marshal: John J. Gleason

Robin Kirkwood Auld
Christine M. Wilson

**Certificate of Advanced
Graduate Study**

Marshal: Miffrando Obach

Nahid M. Abed, *School Counseling*

*Thomas G. Alfiero, *School
Counseling*

*Cari Cuesta, *School Counseling*

Nicole Lynn Fitzgerald, *School
Psychology*

Allison Eve Graber, *School
Psychology*

Erica L. Jamison, *School Psychology*

Soraia Junkoski, *School Psychology*

Sherrie A. Moretti, *School
Psychology*

Kathleen M. Rhodes, *School
Psychology*

Sherri L. Sikorskyj, *School
Counseling*

*Joy A. Williams, *Counseling/Mental
Health*

Master of Fine Arts in Theatre

John F. Harris

Neil M. Hellegers

Master of Social Work

Marshal: Lenore J. Olsen

Vivien Acevedo

Jeanne A. Amadon

Paul M. Amato

Arlette Arteaga

Nicole M. Balch

Darlene A. Bartlett

Mary K. Benjamin

Lauren J. Blanchette

Gianna M. Boulet

Emily E. Buckbee

Maureen T. Caflich

Karen E. Campbell

Jesse C. Capece

Danielle M. Cardin

Angela J. Cardin

Jodi N. Carosi

Darcie A. Carpenter

Melissa L. Cartagena

Stephanie R. Chandler

Kerrin L. Charpentier

Joy D. Christmas

Jessica L. Clark

Beth A. Cooke

Pamela M. Costa

Mandy L. Crandall

Mary N. Dana

Sara O. deSousa

Meghan C. Deveau

Courtney B. Dieterich

Jamie L. Drain

*Deborah A. Duffy

Nancy B. Ehrlich

Todd W. Ellison

William J. Felkner

Anne G. Fortier

Marissa A. Gaboriau

Jorge F. Goncalves

Malia J. Goodwin

*Joan E. Harmon

Juliet H. Hathon

Susan M. Houle

Jennifer C. Irish

Taneil S. Jennings

Carrie A. Kupiec

Karen A. Leeds

Rachel A. Leonard

Deborah J. Mansi

Debra L. Marshall

Cherie A. Martins

Elaine M. McDonald

Elizabeth N. McDonald

*Deborah Z. Meza

Cornelia H. Middleton

*Christine A. Mosher

Angela Muccio

Megan E. Mulligan

Patricia A. Olney-Murphy

Jessica L. Peipock

Keri J. Perlman

Jessica B. Piascik

Kerri L. Picard

Mary E. Proulx

Angela L. Razza

Dale S. Rheault

Sharon E. Roberts

Delyan L. Savov

Somphone Sayasit

Jeffrey A. Schneider

Rhonda E. Schwartz

Allison L. Sebastiao

Jessica M. Sellins

*Janice E. Smith

Carolyn F. Souza

Brooke H. Spencer

Cynthia A. Tracy

David A. Tulli

Renee C. Watson

Eunice H. Wharton

Karen E. Whitehead

Master of Arts

Marshal: Edythe L. P. Anthony

Lisa M. Abreu Morel, *School
Counseling*

Aaron J. Aguiar, *Art/Media Studies*

*Kathryn M. Alario, *School Counseling*

Andrew J. Arsenault, *History*

*Michael Basileo, *School Counseling*

Deana Marie Belisle, *School Counseling*

*Mary Ellen K. Benedict, *School
Counseling*

*Todd M. Bianchino, *Psychology*

Pamela Boulais, *School Counseling*

Michele Boulay, *Art/Media Studies*

Emily A. Cardillo-Bell, *School
Counseling*

*Nicole M. Carrier, *Biology*

*Jason N. Centracchio, *Biology*

*Conor Clinker, *History*

Judith I. Crawford, *School Counseling*

*Alyson L. Cunha, *School Counseling*

Rebecca S. Custis, *Individualized
Program*

Gina E. Desjardins, *School Counseling*

Jessica M. Diaz, *School Counseling*

Stephanie A. Enos, *School Counseling*

*Melanie B. Furtado, *School Counseling*

Dawn M. Gonsalves, *School
Counseling*

*Mohamed W. Gouda, *School
Counseling*

John Edwin Griswold, *Psychology*

Deborah Haug, *School Counseling*

*Melissa S. Highcove, *School Counseling*

Mark Holding, *History*

Katy Anne Howe, *English*

Dionne A. Irving, *English/Creative
Writing*

Jennifer M. Jawharjian, *School
Counseling*

*Pamela A. Jensen, *School Counseling*

Lauren M. Kelly, *Psychology*

Catherine Kesack, *School Counseling*

Megan L. Kimbrel, *English*

*Ashlee A. LaFauci, *School Counseling*

*Brian B. LaFauci, *School Counseling*

Lisa L. Langlois, *School Counseling*

- *Martha R. Leonard, *School Counseling*
Julie A. Lima Boyle, *English*
Kristen M. Lynch, *School Counseling*
Synora Matacia, *Art Education*
- *Mark Maziarz, *School Counseling*
Melissa M. Misiaszek, *School Counseling*
Melanie Nobles, *School Counseling*
Maria V. Ospina, *School Counseling*
Amanda Pasquazzi, *School Counseling*
Mayra O. Peguero-Bueno, *School Counseling*
- *Vicki A. Petteruti, *School Counseling*
Karen M. Pfeil, *English/Creative Writing*
Amy M. Ponte, *School Counseling*
*Annie M. Price, *School Counseling*
Stephanie D. Puri, *School Counseling*
- *Gloria Rakaczki, *Psychology*
Benjamin J. Ryder, *Biology*
Margaret M. Schlageter, *School Counseling*
Joseph Silva, *Agency Counseling*
- *Lisa A. St. Germain, *School Counseling*
Beth A. Travers, *Mathematics*
*Carolynn L. Vallot, *School Counseling*
- *Regina A. Vinluan, *Individualized Program*
Bethany E. Watson, *Psychology*
Donald F. Wheeler, *School Counseling*
- *Linda Jeanne Woods, *English/Creative Writing*
- Master of Arts in Teaching**
Marshal: Rainy M. Cotti
Jeffrey C. Ayotte, *Secondary Education/English*
Jennifer Bakios, *Elementary Education*
*William F. Black, *Elementary Education*
Charlene M. Breggia, *Individualized Program*
Keri Lyn Calhoun, *Secondary Education/English*
Kelly Assad Cambio, *Elementary Education*
*Melissa C. Casper, *Elementary Education*
*Kiera N. Chetlen, *Elementary Education*
Lori A. Dalesio, *Secondary Education/English*
- Gretchen A. Dauphin, *Elementary Education*
Joshua Dowiot, *Elementary Education*
Carol Faulkner, *Elementary Education*
Lisa C. Ferretti, *Secondary Education/History*
Art J. Finocchiaro, *Elementary Education*
*Deborah A. Fortier, *Elementary Education*
Sarah K. Gates, *Elementary Education*
*Michelle R. Gauvin, *Elementary Education*
Teresa L. Gervais, *Music Education*
*Malika Ghaout, *Teaching English as a Second Language*
*Ann Marie Gianetti, *Elementary Education*
*Brooke R. Grant, *Elementary Education*
*Laura L. Gravell, *Art Education*
*Claudia Trapassi Hawkes, *Elementary Education*
Susan Elizabeth Hodge, *Elementary Education*
*Karen Beth Hogan, *Elementary Education*
Linda Susan Humphrey, *Elementary Education*
*Margaret M. Johnsen, *Elementary Education*
Sharon A. Joubert, *Elementary Education*
Tammy Kelly, *Elementary Education*
Jennifer Lynn Labonte, *Elementary Education*
Andrew Michael Langlois, *Secondary Education/History*
Keryn Martha Lemieux, *Elementary Education*
*Elizabeth Ann Leys, *Elementary Education*
*Patrick E. McLaughlin, *Secondary Education/History*
Michael S. McManus, *Secondary Education/History*
Melissa J. Melvin, *Elementary Education*
Ana I. Mendiburu, *Secondary Education/Spanish*
Susan Christine Mizerak, *Elementary Education*
Julie A. Moretti, *Elementary Education*
*Jonathan B. Paquette, *Art Education*
Emily L. Perron, *Secondary Education/Mathematics*
- Joshua Randall, *Secondary Education/History*
Deanne J. Ross, *Elementary Education*
*Jessica A. Sanna, *Elementary Education*
Rosemarie Souza, *Secondary Education/Biology*
*Robin R. Taylor, *Elementary Education*
*Kara B. Tennett, *Elementary Education*
Kira L. Trainor, *Secondary Education/English*
*Tracey A. Weston, *Elementary Education*
- Master of Education**
Marshal: Lisa B. Owen
Christopher B. Anthony, *School Administration*
Deborah L. Arenberg, *Special Education/Severe-Profound Disabilities*
David K. Avedisian, *School Administration*
Dino J. Bachini, *Teaching English as a Second Language*
Cherie Baffoni, *Special Education/Severe-Profound Disabilities*
*Janet Barton, *Reading*
Joann E. Basel, *School Administration*
Cecilia M. Bernardo, *Teaching English as a Second Language*
Jennie L. Boisvert, *Health Education*
Alfred Boutin, *Secondary Education*
*Linda S. Bovis, *Special Education/Urban Multicultural*
Sarah Boyd, *School Administration*
Susan Buonanno, *School Administration*
Ruth E. Burke, *Reading*
Lisa M. Castelli, *Special Education/Urban Multicultural*
*Leah G. Chesney, *Reading*
Thay Chuk, *Special Education/Urban Multicultural*
*Maria C. Colon, *Teaching English as a Second Language*
*Lidia M. Cordeiro, *Teaching English as a Second Language*
Dalila V. Correia, *Special Education/Urban Multicultural*
*Cynthia R. Coutu, *Special Education*
Louise L. Cruz, *Health Education*
Tracy A. Cullen, *Special Education/Elementary Special Needs*
*Pamela L. Daigneault, *Individualized Program*
Heather L. Dandrow, *Special Education/Elementary Special Needs*
*Gail A. Dandurand, *School Administration*
Brooke Davidian, *Reading*

- Shannon L. D'Eramo, *Reading*
Deana L. Desjarlais, *Reading*
- *Mary A. Dinerman, *Elementary Education/Early Childhood*
- *Lisa A. Dion, *Reading*
- Kathryn L. DiToro, *Reading*
- *Rebecca J. Dugan, *Special Education/Elementary Special Needs*
- Sharon A. Eagleson, *Reading*
- Andrea Eddy, *Special Education/Severe-Profound Disabilities*
- Jenny Elizabeth Elste, *Special Education/Secondary Special Needs*
- Jennifer G. Enck, *School Administration*
- Bruce G. Fairbanks, *School Administration*
- Heidi S. Fee, *Special Education/Elementary Special Needs*
- Alyson L. Ferney, *Reading*
- Thomas E. Forbes, *School Administration*
- Michael P. Franco, *School Administration*
- Evelyn L. Gendreau, *Elementary Education*
- Jenifer R. Giroux, *Teaching English as a Second Language*
- Erin Godfrin, *Special Education/Severe-Profound Disabilities*
- *Elizabeth Goldberg, *Special Education/Severe-Profound Disabilities*
- Augusto Gomes, *School Administration*
- Carrie L. Graham, *Special Education/Elementary Special Needs*
- Lena M. Greene, *Special Education/Severe-Profound Disabilities*
- Kerri A. Guillemette, *Reading*
- *Maria G. Hannon, *Special Education/Severe-Profound Disabilities*
- Tina M. Hoover, *Special Education/Severe-Profound Disabilities*
- Deborah A. Hornung, *Health Education*
- Laurie E. Jansen, *Special Education/Severe-Profound Disabilities*
- Susan Jay, *Health Education*
- Susan M. Kehoe, *Health Education*
- Brent E. Kermen, *School Administration*
- *James E. Larson, *School Administration*
- Virginia M. Leon, *Health Education*
- *Kathleen C. Leonard, *Teaching English as a Second Language*
- Terrence M. Lynch, *School Administration*
- Linda Majewski, *Special Education/Severe-Profound Disabilities*
- *Melaney C. Matteson, *Elementary Education*
- Ronald C. Matteson, *School Administration*
- Diane McGill, *Elementary Education*
- Michael P. Miller, *Special Education/Urban Multicultural*
- Donna J. Moan, *Health Education*
- Joanne B. Moretti, *Special Education/Severe-Profound Disabilities*
- Karen Muir, *Special Education/Urban Multicultural*
- *Joan M. Mullin, *Elementary Education*
- Jessica C. Mulvey, *Special Education/Urban Multicultural*
- Jennifer B. O'Rourke, *Elementary Education*
- Carol T. Paiva, *Health Education*
- Heather E. Palmer, *Special Education/Severe-Profound Disabilities*
- *Erin Papa, *Teaching English as a Second Language*
- Rachel C. Pare, *Elementary Education/Early Childhood*
- Helen D. Pereira, *Special Education/Elementary Special Needs*
- Stephanie J. Petricone, *Reading*
- Joanne M. Pfeiler, *Health Education*
- Kellie M. Piche, *Special Education/Severe-Profound Disabilities*
- Kerrie L. Place, *Reading*
- *Sarah L. Poland, *Special Education/Severe-Profound Disabilities*
- Rebecca L. Resinger, *Special Education/Urban Multicultural*
- *Kelly A. Ricciardi, *Teaching English as a Second Language*
- Natasha Rosa, *Special Education/Elementary Special Needs*
- Mary-Ellen Rossi, *Special Education/Elementary Special Needs*
- Christine M. Salem, *Elementary Education/Early Childhood*
- Caroline S. Schwab, *Reading*
- Dawn Y. Seitz, *Health Education*
- Kathleen A. Serverian-Wilmeth, *Special Education/Urban Multicultural*
- Karen T. Shirey, *Special Education/Elementary Special Needs*
- Annamarie Sirois, *Teaching English as a Second Language*
- Lynn Sironen, *School Administration*
- Susan K. Smith, *Reading*
- Nubia Sulbaran, *Teaching English as a Second Language*
- Luz D. Tamayo, *Special Education/Urban Multicultural*
- *Barbara Thompson, *Reading*
- Nancy M. Thompson, *Health Education*
- Kimberly A. Tremonte, *Special Education/Urban Multicultural*
- Keith A. Vellone, *School Administration*
- Maria A. Vergez, *Special Education/Urban Multicultural*
- Lawrence W. Verria, *School Administration*
- Kerrie-Lee M. Walker, *Elementary Education*
- Erin M. Welchman, *Health Education*
- Laurie A. Whitman, *Secondary Education*
- Wendy Williams, *Special Education/Severe-Profound Disabilities*
- Regina Winkfield, *School Administration*
- Donna Zannelli, *School Administration*
- Andres R. Zuniga, *Teaching English as a Second Language*
- Master of Music Education**
- Dalen N. Favali
- Regina L. McAdam
- *Jenette M. Moravec
- Lisa G. Reynolds
- *Ronald R. Runner
- Shannan H. Soares
- Master of Professional Accountancy**
- Loren A. Doyle
- *Justin Duquette
- Roger A. Fedelia Jr.
- Laura L. Gustafson
- *Michael E. Hefron
- Richard A. Kidd Jr.
- Jesus R. Ortega
- *Ronald G. Santos
- Master of Science**
- *Daniel J. Cordeiro, *Industrial Technology*

BACCALAUREATE DEGREE CEREMONY

COMMENCEMENT EXERCISES
BACCALAUREATE DEGREES
Saturday, the twentieth of May

Processional

Pomp and Circumstance No. 1... Edward Elgar
Fanfare—Processional on Gaudeamus Igitur... James Sochinski
The Earle of Oxford's March... William Byrd
America the Beautiful... Samuel Ward

Opening of the Ceremony

John Nazarian
President of the College

The National Anthem

Amanda Hopkins and Jacqueline Valliere
Vocalists

Invocation

Michael Najim
Chaplain, Rhode Island College

Greetings

Donald L. Carcier
*Governor of the State of Rhode Island
and Providence Plantations*

Frank Caprio
Chair, Board of Governors for Higher Education

Golden Anniversary Gift

Betsy Conlon Balzano
Class of 1956

Conferring of Honorary Degrees

Candidates presented by
Dan L. King
Vice President for Academic Affairs

Raymond W. Houghton
Doctor of Humanities

Anne M. Sliney '87
Doctor of Science

Marian Wright Edelman
Doctor of Laws

Commencement Address

Marian Wright Edelman
Founder and President, Children's Defense Fund

Farewell Remarks

Nichole L. Magnifico
President, Class of 2006

Conferring of Baccalaureate Degrees

Candidates presented by

Julie Wollman-Bonilla
Dean, Feinstein School of Education and Human Development

Carol Bennett-Speight
Dean, School of Social Work

James A. Schweikart
Dean, School of Management

Richard R. Weiner
Dean, Faculty of Arts and Sciences

Welcome into the Alumni Association

Marianne M. Needham '59
President, Rhode Island College Alumni Association

Closing of the Ceremony

Alma Mater

Recessional

Auld Lang Syne...Traditional Scottish Melody
Sea Songs...Ralph Vaughan Williams
Processional March...Richard Wagner
March from First Suite in E-Flat...Gustav Holst

A reception immediately following the Commencement exercises will be held at the Fred J. Donovan Dining Center, where diplomas will be available on the mezzanine.

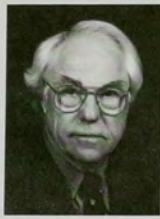
CLASS OF 2006

Nichole L. Magnifico, *President*
Christopher Schayer, *Vice President*
Traci R. Keene, *Secretary*

HONOR CORDS

Undergraduates who are receiving their degrees today with Latin honors have the privilege of wearing special "honor cords." The color of the cord indicates the level of the honor as follows:

Summa cum laude...gold
Magna cum laude...burgundy
Cum laude...white



RAYMOND W. HOUGHTON

Doctor of Humanities

Raymond W. Houghton's remarkable career in educational leadership has been rooted in the belief that personal and collective improvement of human existence resides in the education and enlightenment of people. A graduate of Pawtucket West High School, he entered the U.S. Air Force as an early enlistee during his senior year at the height of World War II. Returning to Rhode Island after the war, he earned an A.B. in English literature and English expression from Brown University in less than four years and remained at Brown to earn an A.M. in English and education. He subsequently earned a Ph.D. in curriculum and foundations of education at the University of Connecticut.

Dr. Houghton began his career in teaching in the Warwick Public Schools, where he would become director of Curriculum and Research in 1960. In 1961 he joined the faculty of Rhode Island College as professor of secondary education. He was responsible for the development of the Master of Arts in Teaching (M.A.T.) program at Rhode Island College, a program that was established to enable graduates of liberal arts colleges to attain the educational background necessary for them to become certified as teachers.

To serve underprepared and disadvantaged youth from urban settings, Houghton was a founder of the Upward Bound program at Rhode Island College. In 1968 Houghton conceived and founded the Urban Educational Center of Rhode Island (UEC) in order to bring higher education opportunities to the urban core of the state's capital city. The UEC was initially administratively associated with Rhode Island College and later evolved into what is today the Liston (Providence) Campus of the Community College of Rhode Island.

In the 1980s, as Houghton's career as an active faculty member at Rhode Island College began to wind down, he developed a relationship with historic Trinity College of Dublin, Ireland, where, in addition to teaching, research, and service, he founded and served as director of Saor Ollscoil na h'Eireann (The Free University of Ireland). He was later honored for his service at Trinity with the awarding by that institution of the *Magisteri in Artibus* (Honoris Causa).

Houghton served as author, co-author, or editor of many publications, including the books *Education on the Brink: In Education, Emerging Goals in a New Millennium*; *Images of Berkeley*; *The World of George Berkeley*; *Questions from Beyond: Educational Queries for a New Millennium*; *Learning and Intelligence: Conversations with Skinner and Wheeler*; and *Lime Rock Days: Life on the Farm, 1930s*.

Dr. Houghton served on the Board of Directors of Looking Glass Theatre, Notre Dame Hospital, and the Salvation Army, among others. He served as president of the International Berkeley Society, the Rhode Island Chapter of the American Guidance and Personnel Association, the Rhode Island Educational Theater Association, and the Rhode Island Philosophical Society and was active in numerous other organizations.



ANNE M. SLANEY '87

Doctor of Science

Anne M. Slaney '87, nursing specialist for the Clinton HIV/AIDS Initiative, has advised and assisted governments in Africa and Asia in developing care and treatment programs for those infected with HIV. She has worked with the Ministry of Health of Kenya to design and implement a program to hire and train 1,000 Kenyan nurses for government health facilities, and in cooperation with the government of India, created a strategy and curriculum to train 35,000 nurses in HIV/AIDS nursing. With her Clinton Foundation colleagues, Ms. Slaney has helped develop ongoing programs in clinical mentoring for Lesotho, Kenya, Tanzania, Rwanda, Ethiopia, and Vietnam.

She has also established an HIV Nursing Education Project in Belize, Central America. She organized a group of five nurses, one physician, and a respiratory therapist to begin the project in 2004. The project has maintained ongoing support for HIV nurses and public health nurses in that country.

Ms. Slaney received an associate degree in nursing from Community College of Rhode Island and a Bachelor of Science in nursing from Rhode Island College. She is an AIDS certified registered nurse and is state certified as an HIV counselor. Currently she serves as an adjunct professor for the Department of Nursing at Rhode Island College.

She began her nursing career in 1978 as a staff nurse in the adult medical-surgical unit at Rhode Island Hospital, moving to Notre Dame Hospital in Central Falls in the same capacity in 1981. Beginning in 1986, she spent fourteen years as an ambulatory care nurse at Memorial Hospital of Rhode Island, responsible for assessing patients in an urgent care setting, triaging, and monitoring vital signs, laboratory values, and symptoms. Ms. Slaney became the infection control coordinator and clinic nurse for the Hope Center for HIV Care at Memorial in 2000. From 2001 to 2004, she was an HIV medication adherence nurse for AIDS Care Ocean State, providing education to clients in the community regarding anti-retroviral therapy, assessing barriers to adherence, and designing interventions to assist clients with medication adherence.

Ms. Slaney's professional activities are numerous. She is immediate past president and a founding member of the Rhode Island Chapter of the Association of Nurses in AIDS Care. A frequent lecturer on HIV Nursing for undergraduate nursing students, Ms. Slaney has been a presenter for the Brown University AIDS Program's annual "HIV in Primary Care" symposium and served as a preceptor for senior nursing students at Rhode Island College during their community health clinical rotations.

She has conducted a year-long study of low-cost interventions in medication adherence, funded by Abbott Laboratories. She has completed course work in principles of infection control given by the Association of Professionals in Infection Control, and she has completed training in pediatric HIV care in Kampala, Uganda. She has also authored the study "HIV Related Anemia," which won the Anemia Case Study Award sponsored by Ortho Biotech.



MARIAN WRIGHT EDELMAN

Doctor of Laws

Marian Wright Edelman, founder and president of the Children's Defense Fund (CDF), has been an advocate for disadvantaged Americans for her entire professional life. Under her leadership, CDF has become the nation's strongest voice for children and families. The mission of the Children's Defense Fund is to Leave No Child Behind® and to ensure every child a Healthy Start, a Head Start, a Fair Start, a Safe Start, and a Moral Start in life and successful passage to adulthood with the help of caring families and communities.

Mrs. Edelman, a graduate of Spelman College and Yale Law School, began her career in the mid-sixties when, as the first black woman admitted to the Mississippi Bar, she directed the NAACP Legal Defense and Educational Fund Office in Jackson, Mississippi. In 1968 she moved to Washington, D.C., as counsel for the Poor People's Campaign, which Dr. Martin Luther King Jr. began organizing before his death. She founded the Washington Research Project, a public interest law firm and the parent body of the Children's Defense Fund. For two years she served as director of the Center for Law and Education at Harvard University and in 1973 began CDF.

Mrs. Edelman served on the Board of Trustees of Spelman College, which she chaired from 1976 to 1987, and was the first woman elected by alumni as a member of the Yale University Corporation, on which she served from 1971 to 1977. She has received over one hundred honorary degrees and many awards, including the Albert Schweitzer Humanitarian Prize, the Heinz Award, and a MacArthur Foundation Prize Fellowship. In 2000 she received the Presidential Medal of Freedom, the nation's highest civilian award, and the Robert F. Kennedy Lifetime Achievement Award for her writings, which include eight books: *Families in Peril: An Agenda for Social Change*; *The Measure of Our Success: A Letter to My Children and Yours*; *Guide My Feet: Meditations and Prayers on Loving and Working for Children*; *Stand for Children*; *Lanterns: A Memoir of Mentors*; *Hold My Hand: Prayers for Building a Movement to Leave No Child Behind*; *I'm Your Child, God: Prayers for Our Children*; and *I Can Make a Difference: A Treasury to Inspire Our Children*.

She is a board member of the Robin Hood Foundation, the Association to Benefit Children, and City Lights School and is a member of the Council on Foreign Relations, the American Philosophical Society, the American Academy of Arts and Sciences, and the Institute of Medicine of the National Academy of Sciences.

Marian Wright Edelman is married to Peter Edelman, a professor at Georgetown Law School. They have three sons, Joshua, Jonah, and Ezra, two granddaughters, Ellika and Zoe, and two grandsons, Elijah and Levi.

Bachelor of Arts

Deborah M. Andoscia	Mathew C. Daigneault <i>cum laude</i> <i>Presidential Scholar</i>	*Sarah M. Greer
*Julio M. Andrade <i>cum laude</i>	*Robyn L. Daniels <i>cum laude</i>	Ashley E. Griffin
*Alyson B. Andrews <i>cum laude</i>	Michael W. Day <i>cum laude</i>	Paul J. Haddad
Crystal L. Andrews	John A. Dickerson <i>summa cum laude</i>	*Megan M. Hall <i>magna cum laude</i>
Justin M. Aromin	Jaime L. Doorley	Rebecca L. Hayden <i>magna cum laude</i>
Josie Batista <i>magna cum laude</i>	*Theresa A. Drumm <i>magna cum laude</i> <i>Katherine Murray Prize</i>	Charles E. Hewes <i>magna cum laude</i> <i>Presidential Scholar</i> <i>General Education Honors</i> <i>Honors in History</i> <i>Evelyn Walsh Prize</i>
*Diana Hemenway Baxter <i>magna cum laude</i>	Bethany L. Duffy <i>cum laude</i>	Sarah E. Houghton <i>cum laude</i>
Deborah A. Beck <i>cum laude</i>	*John C. Dusel <i>cum laude</i>	*Nicolasa Jimenez
Matthew H. Bertrand	Miriam D. Eid <i>cum laude</i> <i>Tegu Polyglot Award</i>	Michelle E. Johnson <i>cum laude</i>
Matthew R. Blackburn <i>cum laude</i>	*Elizabeth A. Emidy <i>cum laude</i>	*Lauren Jones <i>summa cum laude</i>
Michelle L. Blanchette	Michael J. Fanelli <i>magna cum laude</i>	*Brian C. Joyce <i>cum laude</i>
*Gail D. Bohannon <i>cum laude</i>	Gaetana Fargiorgio <i>cum laude</i>	Kareesh L. Karlsson <i>cum laude</i>
Emily C. Bradley	Matthew M. Faria	Christopher E. Kelly <i>summa cum laude</i>
Katherine M. Brum	Shanna T. Farrell <i>magna cum laude</i> <i>Presidential Scholar</i>	Katie E. King
*Gail S. Burek <i>cum laude</i>	*Shannon Fay <i>cum laude</i> <i>Presidential Scholar</i>	Matthew R. King
Emily M. Butler	*Maria A. Feid	Sabrena P. Kublal <i>cum laude</i>
Marcia K. Cady <i>cum laude</i>	Diane C. Ferreira <i>summa cum laude</i> <i>Nelson A. Guertin Memorial</i> <i>Award—Spanish</i>	*Tanya E. Kurczy
Mayra M. Calzada <i>cum laude</i>	Regina S. Ferreira <i>cum laude</i>	*Erika S. Lacey <i>cum laude</i>
*Elizabeth Camboia <i>magna cum laude</i> <i>Presidential Scholar</i> <i>General Education Honors</i> <i>Bertha Christina Andrews Emin</i> <i>Award (Outstanding Achievement)</i>	Alicia L. Field	Nolan C. Landy
Amanda Cardoso	Cara R. Fontaine <i>cum laude</i>	Lauren J. Leonti <i>cum laude</i>
Evan J. Cardullo	Kristen A. Fredette <i>magna cum laude</i> <i>Presidential Scholar</i>	*Vanessa M. Lester
Melissa A. Carpentier <i>summa cum laude</i>	Kristine F. Gagnon <i>magna cum laude</i> <i>Presidential Scholar</i>	Diane M. Luis <i>magna cum laude</i>
Jacquelyn E. Carr <i>cum laude</i> <i>Presidential Scholar</i>	Kristen N. Geremia	Jessica L. Madison
*Gail M. Castanho <i>magna cum laude</i>	Patricia T. Gesmundo <i>summa cum laude</i>	Sara A. Malouin <i>cum laude</i>
Pj Y. Cayo <i>cum laude</i>	Brian D. Gilmore	*Peter C. Marra
Amy L. Chauvin	Dayton R. Godon <i>cum laude</i>	Tiffany L. Martin <i>cum laude</i>
†Mark R. Cicerone <i>magna cum laude</i>	*Amy M. Gonzalez <i>cum laude</i>	*Bethany J. McCann
Alyssa A. Colby	Laura Lynn E. Gray <i>cum laude</i> <i>Presidential Scholar</i> <i>General Education Honors</i>	Tina E. McDonough
Kristen M. Corry		*Dianne E. McElroy
Alicia D. Coutu		Kristen J. McKenzie <i>cum laude</i> <i>Presidential Scholar</i>
Megan L. Cresci <i>cum laude</i>		Brihenna M. Meo
Cristina M. Cucinotta		Jeremy R. Mombourquette
Carissa L. D'agostino <i>summa cum laude</i>		Carol A. Monahan <i>magna cum laude</i>
		Megan A. Morin <i>cum laude</i>

Stephanie A. Morro
 Diana Morvillo
cum laude
Educational Studies Award

*Kelly A. Mullaly
summa cum laude

Anny B. Munoz
cum laude

*Heather A. Nadeau
cum laude

Derek R. Noel
cum laude

*Haley E. Oliver
 Heather L. Oliver

*Loida E. Olivo

*Paul P. Olson
 Elizabeth S. Pacheco
cum laude

Rachel A. Packer
cum laude

*Richard V. Pearson Jr.

*Roxanne H. Phillips
summa cum laude

Victor M. Pimentel

*Christine T. Pinto
cum laude

*Joshua Precourt
cum laude

Kathleen E. Quirk
 Risa A. Rainone
cum laude

Elaine Ramos

*Lisa M. Raposo
 Holly A. Regan
magna cum laude

*Nicole M. Reynolds
 Cristina M. Ricci
magna cum laude
Presidential Scholar
General Education Honors

*Jaclyn A. Richardson
magna cum laude
Presidential Scholar
General Education Honors

*Sara V. Roch
cum laude

*Melissa L. Rollings

*Jennifer L. Rosa
summa cum laude
Presidential Scholar
General Education Honors

Tracey A. Roy
 Kate E. Ryder
summa cum laude

Kristina M. Salley
magna cum laude

*Konstantina H. Sampalis
 Ardel M. Santa Teresa
cum laude

*Jennifer D. Sawyer
magna cum laude

*Craig J. Schmidt

Ronilee M. Scittarelli
 Bonnie J. Shelton
cum laude

*Alyssa M. Silva

*Christopher A. Souza
 Allison E. Strunz
 Jennifer A. Sweet
cum laude

Summer Sweet
magna cum laude

Silyv Tavares

Scot M. Tennent
cum laude

Justine E. Thorpe

*Lauren C. Tomasso
 Patricia A. Trepanier

*Valerie J. Tridenti
cum laude

Kary A. Urso
 Melissa A. Vacca
 Carmela R. Valcourt
cum laude

Eric U. Vidal
 Michael J. Walsh

*Jennifer L. Warren
magna cum laude

Ashley B. Waterman
 Heather M. White
cum laude

*Mayra C. Wilcox
 Audrey J. Wilkinson
cum laude

*Jayme M. Williams
cum laude

Melissa A. Wojcik
magna cum laude

*Amy L. Zaremba
cum laude

Adria G. Zessis
magna cum laude
Nelson A. Guertin Memorial
Award—French

Bachelor of Science

Stephanie L. Accetta
magna cum laude

Colleen E. Achin
magna cum laude

Sean D. Ahern
 Andrew J. Aldrich

*Rebecca L. Allen
cum laude

Daniel J. Amaral

*Amanda B. Amend
magna cum laude

*John D. Arango

*Michael Ashby

*Erika N. Babat
summa cum laude
Presidential Scholar

Christina A. Baggesen
cum laude

Paul M. Banna
cum laude

*Nicole E. Batalon
cum laude

*Danielle M. Beaudry
cum laude

*Peter J. Bedard

*Kristen R. Bibault
cum laude
Presidential Scholar
General Education Honors
Health and Physical Education
Award (Physical Education)

*Stacey L. Bird
 Jennifer L. Bliss
magna cum laude

Timothy J. Boisvert
cum laude

Alexis A. Bouchard
cum laude

*Brittany D. Boyle
cum laude

Andrea L. Braga
cum laude
Elementary Education Award

Clare M. Brauch
summa cum laude

Jessica S. Brooks
cum laude

*Jessica L. Brouillard
 Cynthia L. Brousseau
cum laude

Elena A. Bucci
summa cum laude
Presidential Scholar
General Education Honors
Cantor Jacob Hohenemser Award

*Robin L. Burkitt
 Brian M. Burns
summa cum laude

*Stephanie C. Cabral
magna cum laude

*Joseph C. Capalbo
summa cum laude

*Jessica A. Capaldi
cum laude

*Kristy L. Carignan
cum laude

Ashley A. Casto

*Stephanie J. Caverly

*Crystal J. Cheney
 Roy J. Choquette
summa cum laude

Jennifer J. Claeson

*Beth-Ann Coletta
 Michelle A. Colicci
magna cum laude

Pamela L. Collard
cum laude

Tiffany J. Compton

*Nancy E. Conlon <i>summa cum laude</i>	Sarah A. Greim <i>magna cum laude</i>	Jessica M. MacNeill <i>summa cum laude</i>
Kristen M. Costa	*Raymond R. Harvey	*Meghan E. Mahan <i>magna cum laude</i>
Claribel Crews	*Michael D. Hassell <i>cum laude</i>	*Kimberly J. Malone
*Justina M. Croteau	Jennifer M. Hayden <i>cum laude</i>	Kristen L. Manning <i>magna cum laude</i>
*Claudia W. Cunniff <i>magna cum laude</i>	Amanda B. Hopkins <i>cum laude</i>	Timothy J. Marcel <i>cum laude</i>
Donald L. Curtin	Jennifer L. Jackson	Kimberley A. Markarian <i>magna cum laude</i>
*Jason F. Danahy <i>cum laude</i>	Ronda L. Jalette	Michael F. Marra
*Melanie L. Dansereau <i>cum laude</i>	Kate R. Jones	Kenneth A. Martin
Anderson B. Dasilva	*Brianna L. Jordan	*Vera D. Martins
Melinda A. DeCorte <i>summa cum laude</i>	Lindsay A. Jordan	Nicole McArthur <i>magna cum laude</i> <i>Presidential Scholar</i>
Nina DeMartino <i>cum laude</i>	Matthew J. Juhnowski <i>magna cum laude</i> <i>Presidential Scholar</i>	*Mary A. McGonnigle <i>cum laude</i>
Kristen L. Denommee <i>cum laude</i>	*Monica S. Kauffman <i>magna cum laude</i>	*Timothy J. McLellan <i>summa cum laude</i>
Matthew P. DePasquale	Ellen B. Kaufman <i>magna cum laude</i>	Kristen M. Mirabile <i>cum laude</i>
*Emily D. Dickinson <i>cum laude</i>	*Maria Kishfy <i>cum laude</i>	*Charlene R. Mitchell
Jessica M. DiGregorio <i>cum laude</i>	*Stephanie L. Kociuba <i>cum laude</i>	Edie S. Monahan <i>cum laude</i>
Paula J. Dionisopoulos <i>magna cum laude</i>	Susan M. Kolenda <i>cum laude</i>	Stephanie L. Moniz <i>cum laude</i>
Catherine M. Drance	Christine M. Korney <i>cum laude</i>	Danielle M. Montaquila
*Sarah E. Ducharme	Ryanne E. Kuski	Donna M. Montecalvo <i>cum laude</i>
Kimberly A. Dugan <i>cum laude</i>	Nicholas C. Lafreniere	Nancie M. Morelli <i>magna cum laude</i> <i>Elisa F. Bonaventura Award</i>
Rosemary M. Dumont	Joseph D. Lampman <i>Presidential Scholar</i>	*Susan C. Morgan <i>summa cum laude</i>
Daniel A. Egan <i>magna cum laude</i>	Jonathan M. Lanctot	Kathryn L. Moynihan
*Tara M. Erickson	*Terri-Lyn Lanctot <i>magna cum laude</i>	*Myles L. Murray <i>cum laude</i>
*Noah Escaler	Holly M. Landry <i>cum laude</i>	*Charles Myers Jr. <i>magna cum laude</i>
*Michelle R. Estrela <i>magna cum laude</i>	Caryn A. Langon <i>cum laude</i>	AshleyAnna Nelson <i>cum laude</i>
Donald A. Fair	*Christina M. LaPlante <i>cum laude</i>	*Caren M. Normandin <i>magna cum laude</i> <i>Presidential Scholar</i>
*Rachel L. Ferland <i>cum laude</i>	Sara E. Laurino <i>magna cum laude</i>	*Randi Y. Norville <i>cum laude</i>
Christopher D. Fernandes	Karin L. Lavoie <i>cum laude</i> <i>Health and Physical Education</i> <i>Award (Community Health)</i>	*Tiffany L. Nye <i>cum laude</i>
Jaelyn M. Ferrante <i>magna cum laude</i>	Kirsten L. Lawlor	Gail M. O'Brien <i>cum laude</i>
*Jill K. Fontana <i>cum laude</i>	*Mark P. Lebrun <i>magna cum laude</i>	*Jacquelin L. Papa <i>cum laude</i>
Melanie M. Fontes	Amy M. Lee <i>cum laude</i>	Nicole C. Parascandolo <i>magna cum laude</i>
*Katie L. Furney <i>cum laude</i>	*Brianna M. Leech <i>cum laude</i>	Joseph R. Parenteau
Daniel J. Gambardella	Tammy A. Lemieux <i>summa cum laude</i>	Kevin M. Payette
Courtney A. Gardiner <i>magna cum laude</i>	Matthew E. Lennon	Heather L. Peck <i>cum laude</i>
Rosanne Gargano <i>cum laude</i>	*Kevin M. Littlefield	*Marc K. Pelagalli <i>magna cum laude</i>
Deidre M. Gauch <i>cum laude</i>	*Richard E. Lowell	
Benjamin J. Giuffrida <i>cum laude</i>		
Julia R. Grassini <i>cum laude</i>		

- *Bethany L. Pelletier
magna cum laude
- Maureen E. Pepin
cum laude
- Denise M. Perry
magna cum laude
- *Jane A. Pichette
summa cum laude
- Jennifer L. Pigeon
- *Sherry A. Powell
cum laude
- Kelly L. Pringle
cum laude
- *Taffy L. Quaglieri
summa cum laude
Josephine A. Stillings Award
- Nicole D. Ragosta
- *Matthew P. Records
- *Meghan A. Reynolds
- Amanda L. Ricci
- *Robert J. Rodericks
- Ian M. Rondeau
cum laude
- *Edward R. Rostowsky Jr.
- *Diana E. Rowey
cum laude
Alice K. Pellegrino Music Education Award
- Meredith T. Ruggiero
- Ana Maria R. Santos
magna cum laude
Presidential Scholar
General Education Honors
- *Renee R. Sargent
cum laude
- Sarah L. Sellers
cum laude
- *April Seppala
- Miroslaw Serafin
- *Judy E. Shepherd
cum laude
- Erin L. Shute
- Jessica Signore
- Susan A. Silva
- *Lane E. Sisak
cum laude
- Dorothy B. Smith
- Timothy J. Smith
magna cum laude
Presidential Scholar
Health and Physical Education Award (School Health)
- Kristin M. Soares
cum laude
- *Melissa L. Solitro
cum laude
- Amy E. Souza
magna cum laude
- *Sarah E. Tavis
magna cum laude
- Luana Testa
magna cum laude
- *Karissa L. Threats
cum laude
- Angela M. Twiggs
summa cum laude
- *Alicia M. Uth
- Sarah A. Vadeboncoeur
magna cum laude
- Jacqueline A. Valliere
cum laude
- Sarah J. Webster
- Joann M. Weiner
magna cum laude
- Keith J. White
cum laude
- Brandon R. Williams
- Jennifer L. Xynellis

SCHOOL OF SOCIAL WORK

Marshal: Mildred Bates

Bachelor of Social Work

Stacey L. Allard
 Lori J. Andrews
 Karen M. Barbosa
 Nicole D. Belisle
cum laude
General Education Honors
 Katie L. Benevides
cum laude
Helen M. Murphy Award
 Nicole C. Bessette
 Brandon K. Biron
 Julie A. Bradford
cum laude
 Kimberly A. Chamberland
 Ryanne E. Cochrane
 *Erin L. Coffey
 Dana J. Cook
 Toni E. Cunha
magna cum laude
 Susan M. DaSilva
cum laude
Bachelor of Social Work
Community Service Award
 Christie L. Davis
 Armine Donabedian

Trista M. Escobar
 Joseph Downey Favali
summa cum laude
 Deanne E. Gagne
cum laude
 Cailin M. Goodier
cum laude
 Roberto M. Guerrero
 Kathy A. Guertin
magna cum laude
 Nicole J. Harris
 Karen J. Heath
summa cum laude
 Melissa R. Hebert
magna cum laude
Anthony E. Ricci
Social Work Practice Award
 Sofia I. Irons
cum laude
 Monique M. Jackson
 Tanya Johnson
Rose Butler Browne Award
 Jennifer C. Kachadourian
 *John W. Lapan
cum laude
 Alisa S. Luon
 Lorie J. Main

Lawrence Michon
cum laude
 Michael J. Moniz
summa cum laude
 Darlene E. Monroe
 Kristy N. Olivet-Gallo
magna cum laude
 Caroline B. Peterson
cum laude
 Suzanne M. Raposa
cum laude
 Wanda J. Reed
magna cum laude
 Jacquelin P. Sanchez
 Michael K. Shuttleworth
 Donna F. Sorel
 Anita M. Sowers
 Christina M. Tardio
 Kathryn Tavares
summa cum laude
Presidential Scholar
General Education Honors
 Skye A. Tirado
 Kimberly A. Urquhart
 Nicola Walker
 Michaela A. Wnuk

SCHOOL OF MANAGEMENT

Marshal: Lisa Bonitati Church

Bachelor of Arts

*Melissa A. Carr
Wing Tai Chan
cum laude
Wall Street Journal Award
Pedro Daddario
cum laude
*Joel D. Doiron
cum laude
McKenzie E. Golden
Jose A. Lobaton
Raymond J. Mumford
Gabriel S. Murgo
Richard R. Sanchez
Elizabeth J. Valeika

Bachelor of Science

Connie M. Ackroyd
Iyetunde O. Akinkuotu
Babajide T. Alarapon
Jamie C. Aldoupolis
Cory F. Almeida
Danielle D. Andrienas
magna cum laude
Margaret M. Ashline
Kelly M. Baggesen
Douglas W. Barton
cum laude
Tracy A. Benevides
Kyle N. Best
summa cum laude
Joshua B. Bilsky
Sarah J. Bixby
Alicia M. Blatt
Jonathan P. Bonner
Bethany L. Botelho
*Peter R. Bowman
*Joshua D. Brennan
magna cum laude
Presidential Scholar
*Amber L. Buehler
Joseph M. Burns
*Johan A. Calderon
David J. Carnevale
*Jennifer M. Carpenter
Albert S. Castelli Jr.
Robert N. Chamberland Jr.
Wing Tai Chan
cum laude
Wall Street Journal Award
*Vanna B. Chaw
Lynn A. Clark
summa cum laude
Michael T. Cole

Bryan C. Conley
Angela Conti
cum laude
Kimberly G. Cournoyer
summa cum laude
Outstanding Student Award
(Computer Information Systems)
Dustin N. Couture
Frederick I. Crossman
Michelle G. Dalomba
Jaqueline S. DaLuz
Segun A. Daramola
cum laude
Michael F. DeAngelis
cum laude
Rachel L. DeAngelis
cum laude
Rey E. De La Cruz
Chandra N. Dempsey
*Sheryl E. Detoyato
Justin W. Deveau
John E. Hetherman Award
*Donna E. Dias
*Travis J. Dickey
Nicholas Dubois
cum laude
Stacey L. Dussault
cum laude
*Patricia O. Dutra
Alain G. Edouard
Imane El Brahmi
Abigail M. Evert
cum laude
Alexis Fajardo
*Pamela Ferreira
Sergio R. Ferreira
Suely Ferreira
Jennifer A. Fleming
Crystal G. Fortin
cum laude
Jeffrey D. Foss
summa cum laude
Nelson J. Fox
cum laude
Richard E. Frechette
*Melissa A. Fredette
Carol A. Gabriele
cum laude
Shirley P. Garcia
Nathaniel N. Gaye
James A. Geyer
Melissa A. Gibb
Joshua J. Goding
Karen A. Gomez
cum laude

Morgan D. Gonsalves
cum laude
Kristina L. Greenhalgh
*Jennifer L. Gregory
magna cum laude
Presidential Scholar
General Education Honors
Raymond G. Gruneberg
Jessica L. Gunnoe
JohnPaul A. Habib
Jessica L. Hanosky
Karlenia Hernandez
Jennifer D. Hillard
Thomas J. Houde
magna cum laude
Cheryl D. Irving
*Rosandris M. Javier
Rachel Jerome
Presidential Scholar
*Jason C. Kasper
Kirk D. Kaszyk
cum laude
Katelyn M. Keenan
Steven D. King
Marie A. Laferte
cum laude
*Adam E. Lake
cum laude
*Anthony Lang
Rebecca H. Lapierre
*Danielle J. Levesque
summa cum laude
Tara L. Lewis
cum laude
Presidential Scholar
*Regina P. Liuzzi
cum laude
Jose A. Lobaton
John M. Lombardo
Sergio M. Lopes
Mary F. Lou
*Michael W. Luke
Lauren E. Mahoney
John N. Malone Jr.
Nathan J. Marquard
Stephen C. Mazurak
Jessica L. McMahon
Trevor J. Meyer
Joshua J. Mota
Erin A. Mulanaphy
cum laude
*Kendra P. Olfos
Christopher J. Pagliarini
cum laude
Presidential Scholar
General Education Honors

Varoujan Panosyan
David M. Paquette
cum laude
*Vincenzo S. Parente
Robert T. Pattie Jr.
Rachel E. Pecoraro
Daniel A. Pelicano
magna cum laude
Beiyanil E. Pena
Michelle J. Perez
Andree L. Perkins
cum laude
Presidential Scholar
General Education Honors
Heather M. Pettigrew
Lauren C. Piepowski
Kellie M. Pincince
Presidential Scholar
*Michael C. Poole
cum laude
*Danielle C. Poulin
*Rosa C. Puello
Brian P. Reidy
*Courtney J. Reynolds
Tracy A. Rolland

Pierre C. Rondeau
James A. Ruggiero
Nicole M. Salois
Richard R. Sanchez
Hovsep A. Sarkisian
Lisa S. Sarmiento
cum laude
Abdou A. Sidibe
Christopher J. Smaldone
*Joshua A. Smith
magna cum laude
*Meeru Subedi
cum laude
Melisa S. Tancrell
Sharon Terzian
magna cum laude
Erin E. Todisco
magna cum laude
College Honors
General Education Honors
Honors in Accounting
Outstanding Student Award
(Marketing)
Outstanding Student Award
(Accounting)

Bethany L. Tucker
magna cum laude
John Silva Memorial Scholastic
Award
*Melissa L. Tucker
Robert A. Turmel
Hie Vang
Alejandra C. Vargas
*Diva T. Vieira
cum laude
Kristen A. Weaton
*Brad L. Weaver
Jennifer White
Aaron E. Williams
*Jannel N. Williams
Sarkis Yagoubian
Stephanie L. York

FACULTY OF ARTS AND SCIENCES

Marshal: Duncan A. White

Bachelor of Arts

- *Stephanie L. Adams
magna cum laude
- Cristina C. Afonso
cum laude
- Robert M. Afonso
- *Joshua O. Akhigbe
- Bianca L. Alessandro
- Sharon A. Alfonso
magna cum laude
- Stacey A. Allard
cum laude
- Libie Alone
summa cum laude
- Curtis J. Amado
- *Patricia H. Amatore
cum laude
Presidential Scholar
- Michael R. Amend
cum laude
- Kristen L. Anderson
summa cum laude
- Laura C. Anderson
- *Holly M. Andrade
- David H. Angell
magna cum laude
- *David A. Aquilante
- Lindsay Arnold
Presidential Scholar
- Daniel J. Arrigan
cum laude
- Heather L. Assaf
- Alexander V. Athanas
- Brian E. Atkinson Jr.
- Monique R. Audette
summa cum laude
- *Murielle Aubourg
- *Kieran Ayton
summa cum laude
Presidential Scholar
College Honors
General Education Honors
- *Leah D. Babat
summa cum laude
- *Suzanne M. Babcock
- Julie M. Bacon
magna cum laude
- *Jamie L. Banes
cum laude
- Ereny Banoub
- Stefania A. Barone
- Nichole Bauer
- Aaron E. Bazzle
- Russell Bears
- Brandee L. Beaucage
- *Kelly A. Beauchemin
- Jason W. Beaumier
- Kimberly L. Bebyn
summa cum laude
- *Arlene D. Beckles
- Ernest A. Bediako
- Marissa L. Bedrosian
- Ronald G. Befort
- Denise I. Bell
cum laude
- Christina M. Benevides
- Melissa Z. Benitez
- Tiffany F. Bentley
- Rosalie Berrios
cum laude
- Allison L. Bienenfeld
summa cum laude
- *Stacey L. Bird
- Brandon K. Biron
- *Erin E. Bishop
- *Nathaniel H. Bishop
- *Ara J. Boghigian
- Justin S. Bongiaro
cum laude
- Sandra Bonvehi
- Erica Borges
cum laude
Peter Jeffrey Archambault
Memorial Award
- Robert D. Borges
cum laude
- *Michelle L. Bouchard
- *Bethany L. Boucher
- Maria E. Boutier
magna cum laude
- Megan M. Bradley
- *Vanessa A. Brailsford
cum laude
- Jaimie L. Brayton
- *Melissa A. Brazil
- *Mary M. Brennan
- *Stefanie Briganti
- Wendolyn S. Brito
- Adria M. Britto
cum laude
- Kevin R. Broccoli
cum laude
- Kimberly M. Broccoli
- Brett C. Broesder
cum laude
- Alexis M. Brown
- *Daniel A. Brown
- Edward E. Brown
magna cum laude
- *Matthew D. Brown
- Tammy S. Brown
cum laude
Presidential Scholar
- Christine M. Brunelle
- Ellen R. Bucci
- Rebecca M. Burnham
cum laude
- Daniel Burns
cum laude
- *John K. Burns
- Karen L. Burns
- *Rebecca L. Butler
- *Melissa J. Butts
- *Natasha Calcagni
- Hilary A. Caldwell
- Leslie A. Camara
- Robert M. Cambio
magna cum laude
- *Brandy L. Campbell
summa cum laude
- Christina L. Campbell
- Rebecca J. Campbell
magna cum laude
- Timothy O. Caouette
magna cum laude
- *Daniel J. Caparco
- Jon-Paul Capece
- Katherine L. Capron
- Crystal R. Carcamo
- Kristen A. Carlow
- Graciphy Castro
- Elvira A. Centeno
- Nancy Cepeda
- Jennine M. Cerra
magna cum laude
- Sara A. Chamberland
summa cum laude
Presidential Scholar
General Education Honors
- Rebekah A. Charron
cum laude
- Becky L. Chartier
- Renee C. Chartier
cum laude
- Timothy R. Chase
- Beth M. Chianese
- Sun-He Chong
- Justin A. Ciccotelli
- Ashlee A. Clarke
cum laude
- Shael A. Colantonio
magna cum laude
- *Kerri L. Collins
- Veronica Colon
- *Stacy A. Cordeiro

- Catherine M. Cormier
Vera M. Correia
Erin A. Corriveau
General Education Honors
Jessica L. Costa
cum laude
Pamela A. Cote
Heidi M. Cournoyer
magna cum laude
American Institute of Chemists Award
*Stacey L. Cournoyer
Daniel R. Couture
Kirsten J. Couture
cum laude
Jessica M. Crane
summa cum laude
*Erin C. Cronan
Michelle L. Curl
cum laude
Pedro Daddario
cum laude
Thais Daddario
Andre L. Daley
Janine B. D'Alfonso
cum laude
Jennifer L. Dalton
cum laude
Kathryn M. D'Ambrosio
Tonya L. Dana
Meela Daniel
Jennifer E. Daponte
Crystal A. Dark
Jerry DaSilva
cum laude
Momolu F. David
*Dorinda K. Degnan
cum laude
Karina J. De la rosa
magna cum laude
Maryann Della Grotta
Jessica L. Del Prete
Mariesa C. DelSesto
Mark T. Demery
Sarah M. Denham
*Lynn E. Dennis
Erica L. Desalvo
cum laude
Stephanie A. DeSilva
magna cum laude
Communications Achievement Award (Public Relations)
Ashley M. DeSimone
cum laude
Presidential Scholar
General Education Honors
Loran J. Diciolla
Christine M. DiRobbio
*Glenn R. Doherty
Desarae A. Downs
cum laude
*John Doyle IV
*Steven M. Drost
Keith A. Duffy
summa cum laude
Erin E. Dumas
Christina M. Dunlap
Melinda M. Duquette
summa cum laude
Richard A. Howland Computer Science Award
*Leslie A. Durand
Laura J. Durniok
cum laude
*Michael S. Dutra
cum laude
Abbey L. Easterbrooks
magna cum laude
Communications Achievement Award (Speech and Hearing)
Jolene L. Eastman
Rayna L. Elliano
Jessica A. Elliott
cum laude
Lillian R. Elliott
magna cum laude
Lianne M. Elsner
summa cum laude
Presidential Scholar
College Honors
General Education Honors
Honors in Computer Science
Christopher R. Mitchell Award
*Tara M. Erickson
Rena M. Esan
Rosita Estacio
Donald A. Fair
Eric J. Fallon
cum laude
Presidential Scholar
Melissa J. Fallon
*Paula M. Farley
Christopher J. Farrell
Mario Felici
cum laude
Shari L. Fenton
Michael F. Ferragamo
Stephanie M. Ferrara
*Sheryl M. Fiaux
*Keri A. Fish
*William R. Fitzpatrick
magna cum laude
Megan H. Follett
magna cum laude
Communications Achievement Award (Graphics)
Nicole M. Forcier
*Elizabeth M. Fox
Caroline J. Francis
summa cum laude
Presidential Scholar
General Education Honors
Honors in Anthropology
Honors in Film Studies
Mark W. Estrin Film Studies Award
Deborah R. Francis
magna cum laude
Art History Award
Ashley A. Fratantuono
Nicole B. Frechette
summa cum laude
Presidential Scholar
General Education Honors
*Derek J. Freitas
cum laude
Massiel F. Frias
Christopher M. Furey
summa cum laude
College Honors
General Education Honors
Honors in Biology
Eleanor M. McMahon Award
Laura M. Fusco
Kyle N. Gamache
cum laude
Honors in Justice Studies
Scott M. Gambale
*Rosanne Gargano
cum laude
*Meagan A. Garriepy
Presidential Scholar
Cori L. Garrison
*Michael J. Gavin
cum laude
Duthene Germain
Michael S. Giblin
David E. Giglio
Laurel L. Gilbert
cum laude
Ann D. Gilleeney
magna cum laude
Allison R. Giuliano
*Matthew R. Giuntoli
magna cum laude
Presidential Scholar
Thomas J. Gleckman
Andrew W. Golembeske
Nathalie D. Gomez
Monique M. Gonsalves
*Kathy D. Gonzalez
Kevin D. Goodwin
magna cum laude
Honors in History
Timothy I. Goodwin
Melissa A. Gorton
*Elaine Goryl
cum laude
Richard C. Gould
magna cum laude
Benjamin L. Grande

Stephanie M. Gray <i>cum laude</i>	Julianne Jennings <i>summa cum laude</i> <i>James Houston Award in</i> <i>Anthropology</i>	Christopher A. Latendresse <i>magna cum laude</i> <i>Presidential Scholar</i> <i>College Honors</i> <i>General Education Honors</i> <i>Honors in Chemistry</i> <i>Ronald J. Boruch Award</i>
Robert H. Greco	Michala L. Jimmis	Christopher D. Lavendier <i>cum laude</i>
Aimee Gregoire	*Crystal M. Jodoin	*Danielle M. Lavendier <i>magna cum laude</i>
Yuri N. Gregory	Jennifer F. Johnson <i>cum laude</i> <i>Yetta Rauch Melcer Dance Award</i>	Julie A. Lee-Alvarez
Christine M. Grilo	Sarah L. Johnson <i>cum laude</i>	Gregory A. Lemoi
Michelle R. Guillemette	Julia I. Jones	*Nina M. Lennon
Sabrina F. Gustafson <i>cum laude</i>	Mark S. Jones <i>cum laude</i>	Erin L. Leonka <i>magna cum laude</i>
*Elena Gutierrez <i>cum laude</i>	*Robert D. Kalaskowski <i>magna cum laude</i> <i>North Providence League of</i> <i>Women Voters Award</i>	Ryan M. Lepage
Melissa B. Hall <i>summa cum laude</i>	Herbert R. Winter Award for <i>Academic Excellence in Political</i> <i>Science</i>	*Victor L. Lepore
*Kristin R. Halvorson	Gawu M. Kamara	Michelle L. Letourneau <i>Presidential Scholar</i>
Stephanie R. Hanley	*Nathan H. Keene <i>cum laude</i>	Nicole M. Levreault
*Jason M. Harris	Traci R. Keene	*Fatima M. Lima
Colleen M. Hennessy <i>cum laude</i>	Kathleen E. Kell	*John D. Lincoln <i>magna cum laude</i> <i>General Education Honors</i>
Ana J. Hernandez	*Matthew C. Kelly <i>Presidential Scholar</i>	*Ruth D. Lincoln <i>cum laude</i>
Maribel Hernandez	Patrick G. Kelly <i>magna cum laude</i>	Erica B. Lindblad
Wanda Hernandez	Rebecca S. Kenney	Margaret A. Liuzzi
Patricia C. Hetu <i>summa cum laude</i>	Erin M. Kerkhoff	*Carmel M. Lombardi <i>cum laude</i>
Elizabeth F. Higgins <i>cum laude</i> <i>Presidential Scholar</i> <i>General Education Honors</i>	Mark J. Ketchen	*Justin L. Lombardo
*Felicia A. Higgins	Jason M. Kiff <i>summa cum laude</i> <i>Claiborne deB. Pell Award</i>	William F. Lombardo III
Stephanie L. Hodde	Kristen C. Kilduff	Diana J. Lozano <i>summa cum laude</i>
Matthew Hogberg	Zachariah J. King <i>summa cum laude</i> <i>Presidential Scholar</i> <i>Communications Achievement</i> <i>Award (Telecommunications)</i>	Brian W. Lucier <i>magna cum laude</i> <i>Victoria Lederberg Psychology</i> <i>Award</i>
Ernest Holder <i>magna cum laude</i>	Kate A. Kiselka	†Robin M. Lussier
Laura A. Hopkins <i>cum laude</i>	Amy L. Klegraeft	*Sean W. Luttge <i>magna cum laude</i>
Jacqueline S. Horlbogen	*Tonia M. Klemp <i>cum laude</i>	William A. Maccarone <i>magna cum laude</i>
Amanda J. Howman	Genia A. Kluba	Nicole L. MacKay
Robert A. Hunt	Scott E. Komiega	John T. Magner
*Brendan J. Hutchings	Theodore J. Krapf	Nichole L. Magnifico <i>cum laude</i> <i>College Honors</i> <i>General Education Honors</i> <i>Honors in Political Science</i>
Brandee K. Hutchins	Anne H. Krauss <i>magna cum laude</i>	*Marwan J. Malhame
*Robert W. Huxtable <i>cum laude</i>	Suzanne Krupka	Stephen D. Malloy
Christine M. Iafrate	Ryan D. Labbe	Jessica L. Mangione
Domenic A. Idone	*Danielle M. Lafleur	Cynthia J. Marcoux <i>cum laude</i>
Scott M. Jacobs	*Mary Teresa. Lamberti <i>cum laude</i>	Michelle A. Mariani
*Eileen M. Jakabek <i>cum laude</i> <i>Presidential Scholar</i> <i>General Education Honors</i>	Ashley A. LaMountain	Celia C. Marques
*Koisay S. Jallah <i>cum laude</i> <i>Honors in Justice Studies</i> <i>Mary Ann Hawkes Award</i> <i>in Justice Studies</i>	Holly M. Landry <i>cum laude</i>	Missy Martin <i>summa cum laude</i>
*Jillian A. Jarvis	Bradford J. Lane	Veronica G. Martinez
Conan M. Jean	*Michelle A. Lanoue	
*Erica L. Jenks		
*Sarah E. Jenks <i>cum laude</i> <i>Presidential Scholar</i>		
Jennifer M. Jennings		

*Todd J. Mathieson <i>magna cum laude</i>	Gregory J. Moses <i>cum laude</i>	Lauren L. Paradis <i>cum laude</i>
Christine J. Mathieu	*Sandra A. Mota <i>cum laude</i>	Stacie A. Paradise
Hillary J. Matoian	Sabrina L. Mountford	*Jamie M. Pascale
Kristle L. Maxwell	Heather M. Mowry	Jacob P. Peabody
Kimberly L. Mazza <i>cum laude</i> <i>Communications Achievement Award (Public and Professional)</i>	*Melissa S. Mowry <i>summa cum laude</i>	*Heather E. Peckham
*Pamela A. Mazzuchelli <i>summa cum laude</i>	*Laura M. Mulholland	*Merle K. Peirce
Daniel M. McCabe	Kelsey E. Mulligan <i>cum laude</i>	*Steven P. Pelis
*Kristy N. McCaughey	Aaron J. Mundrake	John C. Peloquin <i>summa cum laude</i> <i>Lauris B. Whitman Award in Sociology</i> <i>Bertha Christina Andrews Emin Award (Scholastic Excellence)</i>
Debra A. McGee <i>cum laude</i>	Robin M. Mycroft	Matthew D. Penfield
David W. McGinn	Jill Myers	Nicholas R. Pensalfini <i>cum laude</i>
Michael J. McGiveron	Carolyn M. Nadeau <i>cum laude</i>	Debby F. Pereira
Kevin P. McGovern	Jill K. Nadeau <i>magna cum laude</i>	Jennifer V. Pereira <i>cum laude</i>
Patricia A. McGue <i>magna cum laude</i>	Giana C. Nassi	*Toni M. Pereira
Kevin P. McKenna	*Keith D. Nelson	Margarita E. Perez
Jamie C. McLaren	Amanda L. Nevins	Yuri K. Pertuz
Timothy R. McLaughlin <i>cum laude</i>	Stephanie K. New	Gina M. Phillips <i>summa cum laude</i>
Jasmin M. Mcmanamy <i>cum laude</i>	*Sean P. Neylon <i>cum laude</i>	Setha N. Phongsavan
Michael F. McVey	Christal R. Nichols	*Kim E. Picard
Svetlana Melamedman	Nathan E. Nolette <i>cum laude</i>	Joseph A. Piccardi
Dick B. Melgar	Susan L. Oceau	Erika L. Pietruni
Katerose Mellion <i>cum laude</i>	*Heather L. O'Donnell	*Joseph A. Pimental <i>cum laude</i>
Seth B. Mellor	Selina M. Ogebeide	Melissa M. Pinga
Amy L. Melo	James P. O'Hayer	Aldeneida L. Pinto
Joseph A. Melone	*Alyson M. Oldham	*Jennifer M. Pitts <i>cum laude</i>
Tracie L. Mernick <i>summa cum laude</i>	Michelle I. Oliveira	Alicia L. Poirier
Lauren M. Mesale	*Matthew A. Olivieri <i>magna cum laude</i>	Melissa L. Potter <i>cum laude</i>
John Meschisen	Geraldine I. Onyejekwe	Heather M. Powers
Margeaux A. Michaud	Candace J. Opper <i>summa cum laude</i> <i>Mark W. Estrin Film Studies Award</i>	Sophea D. Prak
*Gregory T. Miga	Jessy Ortiz	Kayla F. Prescott
Jessica M. Mills	Benjamin M. Osman	Kemi C. Price
James A. Moniz <i>magna cum laude</i>	Elizabeth S. Pacheco <i>cum laude</i>	Alicia I. Procter <i>cum laude</i>
Valerie M. Montgomery	James D. Pacheco	Cynthia Proffitt
*Meghan Mooney <i>magna cum laude</i> <i>Presidential Scholar</i>	Scott L. Pacheco	Stephanie A. Provas <i>cum laude</i>
Liss M. Mora <i>cum laude</i> <i>College Honors</i> <i>General Education Honors</i> <i>Honors in Biology</i> <i>W. Christina Carlson Award</i>	Keri A. Pacitto <i>cum laude</i>	*Kerri A. Quagan
Annalisa C. Moretti <i>cum laude</i>	*Christopher T. Palacios	Lara F. Quinlan
Clara M. Morgan	Stephanie S. Palazzo	Matthew T. Radican <i>Presidential Scholar</i>
Denise R. Morgan	Kimberly G. Palmisano <i>cum laude</i>	*Alexis P. Radkovich
Serena A. Morsilli <i>cum laude</i>	Rosemarie A. Paola <i>cum laude</i> <i>General Education Honors</i>	Ronald L. Rainer Jr. <i>Presidential Scholar</i>
*Janet E. Moscarello	Robert J. Papa	Brian Ramos
	Melissa A. Papino	Orlando V. Ramos <i>summa cum laude</i>
	Jennifer L. Paprzyca <i>cum laude</i>	Kristi M. Randmetz
		Danielle G. Raoul

Lindsey A. Raposa	Amanda L. Silva	Kate L. Tancrell
Jennifer L. Rapoza	Rosa S. Silverio	Benjamin J. Tanguay <i>cum laude</i>
Nicole Ratkoski <i>cum laude</i>	Robert S. Silviera	Warren J. Tassone
*Nicholas P. Raymond <i>magna cum laude</i> <i>Presidential Scholar</i>	Melanie Simoes	Mary B. Tavares
Melissa A. Rector <i>magna cum laude</i>	Carla M. Skatzes	Nicholas Tavares <i>cum laude</i> <i>Presidential Scholar</i> <i>General Education Honors</i>
Thomas M. Reddy <i>magna cum laude</i>	Melissa F. Skoutas	Rebecca L. Tavares <i>cum laude</i>
Brook M. Reid <i>magna cum laude</i>	Thomas E. Skuba	Shawn P. Tavares
Kristen S. Renden <i>cum laude</i> <i>Presidential Scholar</i> <i>General Education Honors</i>	Tiffany N. Slowinski	Angela D. Tavarez
Sonia Resendes	*Aili C. Smith	Emily L. Taylor
James E. Richardson	Alexandra L. Smith <i>magna cum laude</i> <i>General Education Honors</i>	Donna M. Testa
Leanne Rigo	Daniel T. Smith <i>cum laude</i>	Rebecca J. Thorpe
Claudia J. Rios	*Casey S. Soares	Alana M. Tiberi
*Rebecca L. Robbins	Tania S. Soares	Kelly M. Tobin
*Anthony C. Rodrigues	Christopher J. Soley <i>cum laude</i>	Marissa M. Tobin
*Antonio P. Rodrigues <i>cum laude</i>	Lackhanavanh N. Somoulaylack	*Cecily M. Torres <i>cum laude</i>
Olivia V. Rodrigues	Danielle A. Soucy <i>magna cum laude</i>	Jessica L. Toscani
*Anna Romanova	Alanna L. Sousa-Pullan	Justin P. Townsend
Brian J. Rooney <i>cum laude</i>	Nicolas Spano	Jenna Tremblay <i>magna cum laude</i> <i>General Education Honors</i> <i>Rhode Island College Theatre</i> <i>Award</i>
Chris B. Rosenquest <i>cum laude</i>	*Brian M. Speaks	Valerie A. Trudeau
Matthew S. Round	Paul J. Spetrini Jr.	Brian N. Trupiano
Emily Rupert	*Jason E. Spidell <i>cum laude</i>	Eleni L. Tsigaridas
Paula M. Ryan	Nicholas M. Sprague	Natalie J. Vachon
Alicia M. Rymill	Lynda J. Squillante	Sarah A. Vadeboncoeur <i>magna cum laude</i>
Lauren M. Sacchetti	Timothy J. Staskiewicz	Matthew W. Valcourt
*Forrester G. Safford	*Michael S. Stebenne	John V. Valentine <i>cum laude</i>
Jillian Salerno	Erica I. Steckert	Monica M. Valerio <i>cum laude</i>
Sebastian R. Sanchez	Amanda L. Steere	April R. Valois <i>cum laude</i>
Ana Maria R. Santos <i>magna cum laude</i> <i>Presidential Scholar</i> <i>General Education Honors</i>	Laura L. Steere <i>magna cum laude</i> <i>Presidential Scholar</i> <i>General Education Honors</i> <i>Departmental Physics Award</i>	Kimberly D. Van Hook <i>magna cum laude</i>
*John P. Saviano Jr.	Kristen A. Stein <i>cum laude</i>	Tracy G. Vanderhorst
Karen E. Schnabel <i>magna cum laude</i>	Gregory T. Steiner	Amanda M. Vanner
Daniel R. Schneider <i>Presidential Scholar</i>	Corrin A. Stelle	Caroline M. Vargas
Alfred W. Schoeninger	*Gregory M. Stewart	Luz M. Velez
Christopher M. Schuler	*Rita-Jean A. Stewart	Rachel E. Ventura
Leslie Scittarelli	Tara L. Stopfel <i>magna cum laude</i>	Laurie Q. Verardo <i>magna cum laude</i>
Marisa M. Scivola	*Evelyn A. Sweeney <i>cum laude</i>	Erika L. Vianello
Jessica A. Scott	Nori-Fatima R. Swennes <i>cum laude</i> <i>Jean Garrigue Award</i>	Louis J. Villanueva
Por-Kim Seng	Courtney E. Sylvia <i>cum laude</i> <i>Presidential Scholar</i> <i>General Education Honors</i>	Jonathan K. Vincent
Isaac Z. Shar	Jacqueline N. Sylvia <i>cum laude</i>	Jonathan J. Vitolo
Michelle A. Shaw	Brenda R. Szeliga	Valerie L. Walaska
Elizabeth A. Sheridan	Melissa Taddeo	Andrew P. Walters
Travis I. Sherman		Meggean M. Ward <i>magna cum laude</i>

Crystal Wardyga
*Aryl M. Washburn
Joseph R. Wasilewski
summa cum laude
*Shawn P. Waterman
cum laude
David E. Watson
cum laude
*Jennifer L. Welsh
Mindy T. Werth
Meghan E. White
magna cum laude
General Education Honors
Thomas J. Howell Award

Tiffany M. Wilcox
Brandon R. Williams
Lauren R. Williamson
cum laude
Jamie I. Winfield
Laura A. Woods
cum laude
Min-Tzu Wu
cum laude
Guyflore Xavier
Qian Xie
*Salomon Xiong
*See Yang
*Phillip S. Yin
Eric A. Young
*Jonathan M. Young
*Kristin A. Zawistowski
cum laude
*Michael A. Zucarelli

Bachelor of Fine Arts

German Cardona
Jason A. Cote
Lila A. Jarzombek
cum laude
College Honors
Honors in Art
Studio Art Award
Suzanne Paiva
magna cum laude
Rachel A. Paolino

Bachelor of General Studies

Scott Budnick
cum laude
Therese M. Jungels-Bevilacqua
Joanne Woodstock
magna cum laude

Bachelor of Music in Performance

*Robert S. Giambo
magna cum laude
*Nicole M. Laprise
summa cum laude

Bachelor of Science

*Kathlene R. Almond
Paula J. Ambrosio
cum laude
*Maribeth Angell
magna cum laude
*Elizabeth A. Archambeault
cum laude
Keynalee Ayala
Melissa M. Ayala
Katie T. Beaudette
cum laude
Erika L. Blakey
*Abra Z. Brown
cum laude
Margaret O. Browne
cum laude
Christine A. Carpenter
magna cum laude
Kristen A. Chapian
Bunnarun Chey
Beth M. Chianese
*Richard L. Corrente
cum laude
Rebeca V. Cortes
Jill M. Cribari
cum laude
*Christina P. DaCosta
Rebekka F. Dagitz
cum laude
*Sonia B. Depina
Kate C. Dolan
cum laude
*John M. Downing
cum laude
Tine R. Egan
magna cum laude
Jessica A. Elliott
cum laude
Lillian R. Elliott
magna cum laude
Nicole F. Ferreira
cum laude
Sandra L. Fournier
magna cum laude
Monica C. Freitas
Rebecca A. Garofalo
summa cum laude
*Cheryl A. Garvin
summa cum laude
Nyempu M. K. Gbatu
*Corine M. Gelfuso
*Flora Jean Giblin
Katie M. Giza
magna cum laude
*Galina Gladkova
summa cum laude
Christopher C. Hannan
cum laude

Laura B. Hartnett
Presidential Scholar
*Shabnam Hashemi
magna cum laude
Nancy G. Hull
magna cum laude
Eucharía U. Ibe
Matthew R. James
Vanessa M. Johnson
*Mir Amjad A. Khan
*Leah E. Kilduff
magna cum laude
Sareina D. Kim
Boima K. Konuwa
Caitlyn E. Laiter
Sarah Rose M. Lamport
summa cum laude
Honors in Nursing
Nursing Award
-Undergraduate
(Academic Excellence)
Jennifer K. Larrabee
cum laude
*Jill A. Laurendeau
Amanda E. Lawton
cum laude
*Terri L. Legare
Susan Mariano
cum laude
Missy Martin
summa cum laude
*Jennifer E. Maynard
cum laude
Lauren P. Mellor
Jessica M. Mulvey
*Nicole M. Neirinckx
magna cum laude
*Monica Ngugi
Kenneth B. Nimley
*Jennifer D. Notarantonio
Erin E. O'Brien
Colleen O'Donnell
Nursing Award
-Undergraduate
(Service Excellence)
*Felicia O. Ofokansi
*Michelle K. Orcutt
Nicole T. Orlando
summa cum laude
Jennifer Ortega
magna cum laude
Benjamin M. Osman
*Randi M. Parenteau
*Ryan L. Parker
Christine L. Penfield
cum laude
*Claudia A. Pereira
*Sharon A. Pietros
cum laude

Lorraine E. Potter-Cooper
summa cum laude
Nursing Award
-Undergraduate
(Registered Nurse)

Danielle G. Raoul

Pamela B. Reid
magna cum laude

George R. Reuther
cum laude

Elaine A. Rice
cum laude

Janella L. Richardson

Jamie L. Rocha
magna cum laude

*Yinette B. Rosario

*Jared M. Rose
cum laude

Brianne E. Saccoccio

Diane L. Salvas
cum laude

Marilena Santizo

Sharon M. Sauer

Holly N. Savard

Meghan E. Selinger

Evelyn M. Serrano

*Tara E. Sharkey

*Natasha L. Shelton

Jessica R. Spink

Tara L. Stopfel
magna cum laude

*Alison M. Stukus

*Kristin A. Sullivan

Deana M. Tallo
magna cum laude

Alexis L. Till

*Susan J. Ulmschneider

*Jennifer A. Vaillant
cum laude

Monica M. Valerio
cum laude

Kristen E. Vaneyk

*Rebekah A. Westgate

Corene L. White

Kerri R. Wolfe
cum laude

Amanda L. Wood
cum laude



THE RHODE ISLAND COLLEGE SEAL

The official Rhode Island College seal, adopted in 1960, incorporates the anchor, a symbol of hope and of the state of Rhode Island, with the founding date of the institution, 1854. The seal was designed by Dr. Edith C. Becker, professor emerita of art, who adapted the central flame symbol from the Holbrook Murals in the foyer of Roberts Hall. The flame is used in the murals to depict the energy that has, over the eons, supported the development of all living things and has led man to his highest intellectual achievements. In like manner, the flame in the Rhode Island College seal stands for the life of the body and the life of the mind, symbolizing the human and intellectual goals and achievements of Rhode Island College.

THE DEL SESTO MACE

At the 1959 Commencement Exercises, the first held on the present Mount Pleasant campus, Governor Christopher Del Sesto presented to Rhode Island College a bronze replica of the statue of the Independent Man so that the College, which up to that time had been located near the State House, might continue its tradition of holding commencements and other academic convocations in the presence of the Independent Man. The Del Sesto Mace, designed by the noted Rhode Island sculptor Aristide Cianfarani and crafted by the Gorham Company, has been in use since 1962 in all academic processions as a symbol of tradition, authority, and of Rhode Island College's commitment to the search for truth, knowledge, beauty, values, and learning.



THE WILLARD MEDALLION

The Willard Medallion, a symbol of the office of the president worn at official and ceremonial occasions, links plates bearing the names of the chief executive officers, who have led Rhode Island College since 1973, in a sterling silver collar with an enamel medallion. It was commissioned by the Rhode Island College Alumni Association and designed by silversmith Curtis K. LaFollette, then a professor of art at the College, to commemorate the inauguration of Dr. Charles Borromeo Willard as the first alumnus to be named president of the College.

ACADEMIC ATTIRE

The caps, gowns, and hoods worn at college and university functions date back to the Middle Ages. Monks and students used them to keep warm in medieval castles and halls of learning. From these practical origins, they have developed into the accepted formal apparel which symbolizes scholarly achievement.

Baccalaureate gowns have a long, pleated front with shirring across the shoulders and back. They are primarily distinguished by flowing sleeves, pointed at the fingertip. These gowns may be worn either open or closed.

The master's gown is worn open and the sleeve is cut so that the forearm comes through a slit just above the elbow.

The doctor's gown has rounded sleeves and velvet panels around the neck and down the front of the gown, as well as three velvet bars on the sleeves. In recent years American universities have followed the custom of European institutions of having doctoral gowns in the color of the university.

Mortar boards or caps worn with baccalaureate and master's gowns generally have black tassels. The tassel of the doctoral cap is usually made of gold bullion.

The hood gives color and real meaning to the academic costume. Its silk lining bears the colors of the institution conferring the degree. The hood is bordered with velvet of a prescribed width and color to indicate the field of learning to which the degree pertains.

CLASS REPRESENTATIVES

1935	Mary Frances Sherlock Campbell	1972	Sandra Boyer Cerel and Daniel Crowley
1936	Benjamin Peterson	1973	Arlene Macksoud Aissis
1940	Robert Herchen	1974	Michele Laliberte-Norman
1941	Mary Davey	1975	Maggie Dooley
1942	Eileen Deering Rafferty	1976	Robert Lancia
1943	Alice Fontes Huff	1977	Raymond Ross
1944	Virginia Hill Murby	1978	Debra St. Germain
1945	Geraldine Carley	1979	Kathy Swann
1946	Mildred Brennan Nugent	1980	Phyllis Hunt
1947	Helen Page Gilligan	1981	George and Catherine Reynolds Gray
1948	E. Virginia Downey O'Connor	1982	Cindy Halpen
1949	Betty Cullen Tammany	1983	Philip Levesque
1950	Patricia McCarthy Florio	1984	Harriet Kankash
1951	George Tracy	1985	Mardo Atoyán
1952	Virginia Cox Varone	1986	Al Gomes
1953	Robert Sullivan	1987	Larry and Ellen Gallant Crete
1954	Richard Mottola	1988	Janice Hannon Fifer
1955	Nancy McIntosh Bordeleau	1989	Edward Soares
1956	Betsy Conlon Balzano	1990	Tina M. Rosa
1957	John Veader	1991	Christopher Butler
1958	Phyllis McDole Tracy	1992	Patricia Pratt Barry
1959	Mary Frappier	1993	Michelle O'Brien Joseph
1960	Joseph Aguiar	1994	Jennifer Rechter Thibodeau
1961	Frances Palumbo Driscoll	1995	Steve and Shane Morganweck
1963	Carolyn Paparella Rabidoux	1997	Dennis Sousa
1964	Charles Wilkes	1998	Maria Cimini
1965	Howard Boyaj	1999	Jason Anthony
1966	Mary McCarthy Grace	2000	Yavin Grosso
1967	Albert Berger	2001	Robert Lanzieri Jr.
1968	Carlos Silva	2002	Melissa Tanguay
1969	Pete Emond	2003	Florence Baker
1970	Thayer Donovan	2004	Tara Mancini
1971	Nancy Gardiner Canestrari	2005	Suzanna Alba

COMMENCEMENT COORDINATOR

Kathryn M. Sasso

COMMENCEMENT MARSHALS

Grand Marshal

Dolores A. Passarelli

Platform Marshal

Mark T. Motte

Edythe L. P. Anthony	Randi I. Kim	Lenore J. Olsen
Jason S. Anthony	George T. Ladd	Jeannine E. Olson
Robin K. Auld	Sandra R. Langlois	Ellie O'Neill
Mildred Bates	Marta Laupa	Lisa B. Owen
Myra F. Blank	Thomas J. Lavin	Susan C. Owens
Mary Ann Bromley	Beth Lewis	Carolyn P. Panofsky
Shani D. Carter	Marlene L. Lopes	Elaine A. Papa
Karen S. Castagno	Denise M. Males	Roberta S. Pearlmutter
Lisa Bonitati Church	Christine Marco	Carol A. Peck
Desiree A. Ciambrone	Colette J. Matarese	Rene H. Perreault
Rainy M. Cotti	Lloyd H. Matsumoto	Betty J. Rauhe
Krista Cournoyer-Robertson	Pauline McCartney	Sharon A. Rogers
Monica Gorham Darcy	Linda M. McEnery	Sylvia Ross
Dante Del Giudice	Dennis McGovern	Karen M. Rubino
Richard L. Dickson	Charles H. McLaughlin Jr.	Cathy Santosuosso
Sharon M. Fennessey	Meredith McMunn	James T. Sedlock
Sharon A. Giacobbi	Robin K. Montvilo	Cheryl A. Silva
Joan I. Glazer	Ann E. Moskol	Susan St. Amand
John J. Gleason	Shana J. Murrell	Mary M. Sullivan
Linda A. Green	Michael Napolitano	Christopher T. Teixeira
Norma V. Hardy	Manon B. Nery	Donald E. Tencher
Carol A. Hryciw-Wing	Madeline F. Nixon	Debra A. Thomson
Cynthia M. Jones	Patricia Nolin	Daniel Weisman
Scott D. Kane	Mifrando S. Obach	Duncan A. White

BEARERS OF THE DEL SESTO MACE

Thomas A. Schmeling

Chair, Council of Rhode Island College

Marianne M. Needham '59

President, Rhode Island College Alumni Association

MUSICAL SELECTIONS

Rhode Island College Wind Ensemble

Robert H. Franzblau, *Conductor*

The Commencement Coordinator gratefully acknowledges the volunteers who have served as marshals and ushers for these ceremonies.

GOVERNOR OF THE STATE OF RHODE ISLAND AND PROVIDENCE PLANTATIONS

His Excellency Donald L. Carcieri

BOARD OF GOVERNORS FOR HIGHER EDUCATION

Frank Caprio, Chair
Kenneth Aurecchia
Kathrin P. Belliveau
Miriam Curtis Coleman

Sarah D. Courtemanche
Brenda Dann-Messier
James A. DiPrete
Joseph H. Hagan
Pierre L. LaPerriere

Thomas Rockett
Daniel J. Ryan
Michael F. Ryan
Solomon A. Solomon

COMMISSIONER OF HIGHER EDUCATION

Jack R. Warner

OFFICERS OF RHODE ISLAND COLLEGE

John Nazarian
President

Dan L. King
Vice President for Academic Affairs

Ivy Denise Locke
Vice President for Administration and Finance

Marguerite M. Brown
Vice President for Development and College Relations

Gary M. Penfield
Vice President for Student Affairs

Richard R. Weiner
Dean, Faculty of Arts and Sciences

Julie E. Wollman-Bonilla
Dean, Feinstein School of Education and Human Development

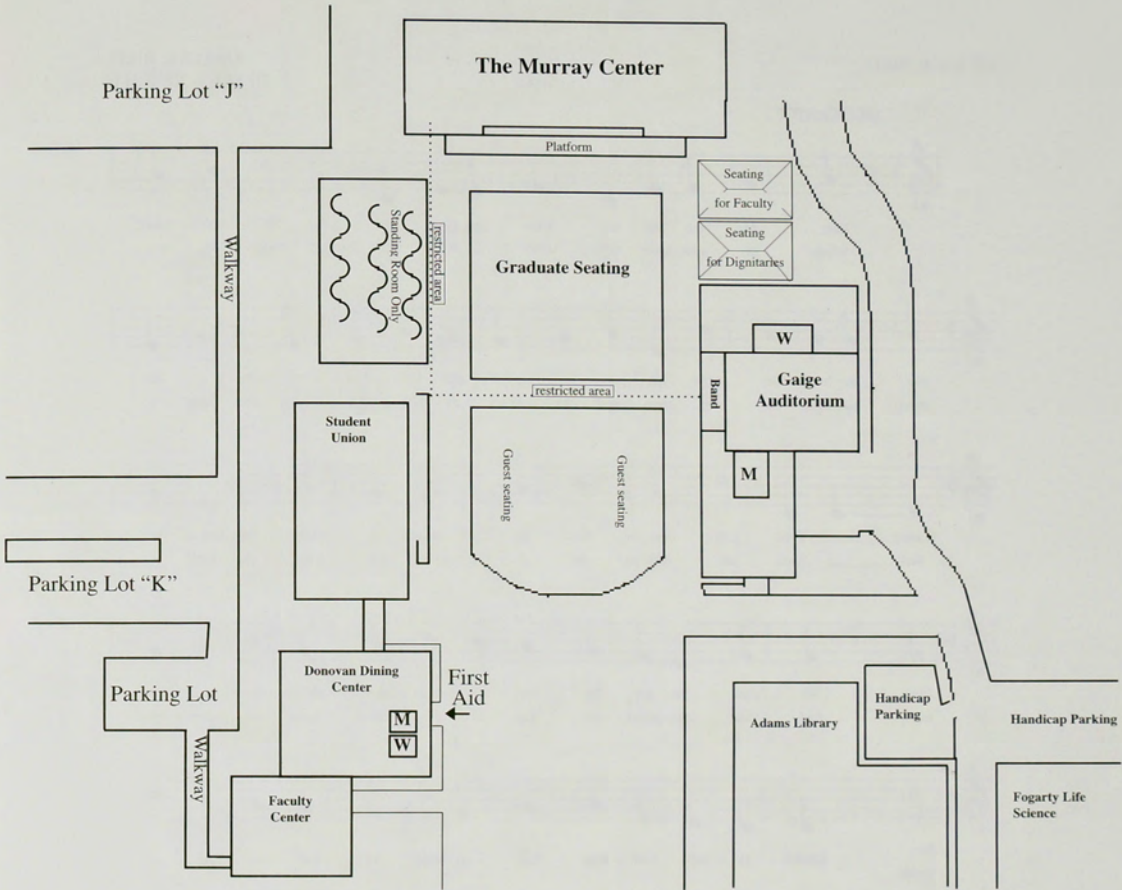
Carol Bennett-Speight
Dean, School of Social Work

James A. Schweikart
Dean, School of Management

PRESIDENT EMERITUS

Joseph F. Kauffman

UNDERGRADUATE OUTDOOR CEREMONY SEATING



The Procession will begin at 9:30 am. Please clear the aisles and take your seats prior to that time.

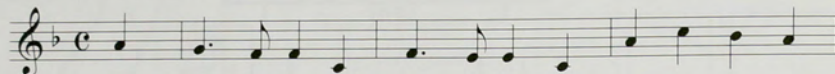
ALMA MATER

4 measures of introduction

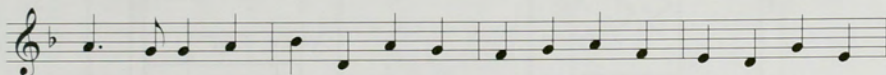
GRACE E. BIRD

GRACE E. BIRD
HELEN S. LEAVITT

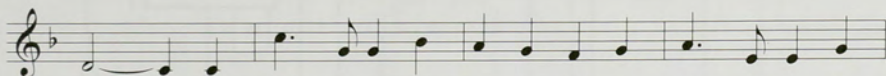
MODERATO



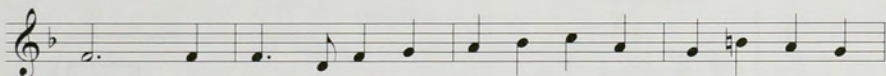
Dear Al - ma Ma - ter wise and kind, To thy fair name shall
When we must leave thy shelt' - ring walls, O - bey - ing du - ty's



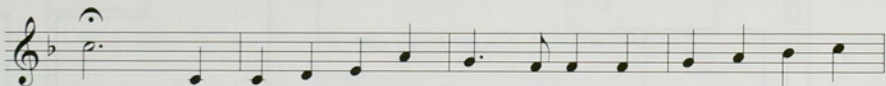
e'er be - long our grate - ful prais - es and our love, The trib - ute of our
stern be - hest, our em - blem bright, the Flag of Hope, Our mis - sion man - i -



song. ——— Thou guard - ian of the sa - cred shrine of truth that makes us
fest, ——— Each kin - dles at the al - tar fires the flam - ing torch of



free. We cher - ish thy be - lov - ed fame and pledge our loy - al -
truth, And thus pre - pared, no fear as - sails the daunt - less heart of



ty. Rhode Is - land Col - lege hail to thee! All hail to Al - ma
youth.



Ma - ter! En - shrined thou art with - in the heart of ev - 'ry son and daugh - ter.

