

Free Access to Ideas

and Full Freedom of Expression

the anchor

On The Inside . . .

Exodus, Page 3

Evita, Page 20

Moving On Out, Page 12

Protest Pics, Page 11

Students Protest New Dorm Policy

by: William Dorry
Anchor Editor

With the full support of Student Community Government (SCG), members of student body began a "camp-in" this week on the front lawn of President Nazarian's house. The protest erupted over an unresolved dispute concerning a new policy of the Office of Residential Life and Housing that has left many current students without a dorm room next year. In addition student leaders have stated that the protest is meant to encourage an open dialog on the building of a new residence hall.

SCG and Student Parliament had been seeking a remedy to the numerous complaints received concerning the new policy. However, student leaders began to feel that they were making no progress with members of the Administration and that further discussions would be unproductive. At an emergency meeting of Student Parliament held April 10, Parliament voted unanimously to support a student protest and even provide tents for the participating students. Parliament also unanimously approved a student referendum asking that a committee be formed with the tasked of investigating the possibility of a new dorm.

The protest which started Sunday night almost came to a quick end on Monday as the College Administration asked that the tents be taken down. Members of the SCG Executive Board and Student Parliament, stated that the students were protesting in accordance with the Student Bill of Rights Article XI and that SCG would not take down the tents.

Problems first began to surface when students received letters stating that there would be a cap of 420 returning students in the residence halls. The letters stated that this was being done in order to allow Residential Life and Housing to set aside 408 spaces for incoming students. The letter explained that this new policy was necessary because of the ongoing housing shortages that Rhode Island College has been experiencing. Students were informed that the spaces would be available on a first come first serve basis.

protest page 3

New Procedures Available at Health Services

by: Heather Black
Anchor Staff

Did you know that you could get tested for an STD without leaving campus? How about a Pap smear? Or a pregnancy test? All of these procedures are available to students with a simple visit to Health Services. Lynn Wachtel, a nurse practitioner, joined the RIC staff in October 2001, and her presence has allowed students to receive these on-site procedures which were previously unavailable.

Wachtel, who received her graduate degree from URI, stressed her staff's devotion to the holistic approach to care. While most visits to Health Services are concerns over acute illnesses and injuries, the focus of Health Services is to provide students with primary care. Many students have no other access to medical care and Health Services hopes to attract these students.

Health Services provides all on-site services free of cost to students regardless of health insurance. In addition to routine physical exams, new procedures available to students this year on campus include routine women's health examinations with pap smears, and contraception such as birth control, Depo Provera, and emergency contraception. Many female students are encouraged by the availability of new gynecological procedures and the availability of birth control options.

The real improvement, however, is the availability of on site gynecological procedures such as the Pap smear. A yearly check aids in the early detection of cervical cancer and other irregularities such as infections. Since cancers rarely develop suddenly, early detection of abnormal cells and treatment can prevent in the development of cancer. A yearly Pap smear should be obtained by all sexually active females or females eighteen years of age and older. According to the CDC (Center for Disease Control and Prevention), annual Pap smears are proven to reduce cases of cervical cancer and overall mortality. The availability of these procedures on campus is a wonderful resource for female students.

Health Services also provides care for men's health needs. STD testing is available, with the exception of HIV testing. If a student does want to be tested for HIV, they are referred to free clinics that offer anonymous testing to protect privacy of the student.

Wachtel is very optimistic about the future of Health Services. With collaboration of multiple on-campus offices such as the Counseling Center, and support from the administration, Wachtel hopes to be able to provide expanded health care for all students. Tentative future hopes for Health Services include the ability to provide students with immunizations in an easier and more cost-effective way.

A Carnival! A Carnival!

by: Andrea J. Stewart
Anchor Editor

The wind through your hair as a metal car propels you through the air, the smell of popcorn and cotton candy, the bright lights that illuminate the night sky... Together, these elements can only add up to one thing: a carnival.

A carnival will be taking place here at R.I.C. from April 25th to the 28th, as a component of R.I.C. End 2002. This carnival is sponsored by R.I.C. Programming, Student Activities, and Student Community

Government, Inc. Thursday, the 25th, will be R.I.C. Student Night, which will include some form of price break for all R.I.C. students. Sunday, the 28th, will be Kid's Day from 2 to 6 P.M. There will be tables of games geared for children, as well as a balloon artist making latex creations. The carnival will be operating from 5 to 11 PM on Thursday and Friday, 1 to 11 PM on Saturday, and 1 to 6 PM on Sunday.

Consequently, Parking Lot A, located in close proximity to the Student Union building, will be closed from April 22nd to the 29th.



TUE
April 16
Mostly Sunny



hi 82°F
lo 58°F

WED
April 17
Mostly Sunny



hi 85°F
lo 58°F

THU
April 18
Cloudy



hi 76°F
lo 51°F

FRI
April 19
Tad Sunny



hi 65°F
lo 47°F

SAT
April 20
Cloudy



hi 67°F
lo 43°F

SUN
April 21
Mostly Sunny



hi 60°F
lo 40°F

MON
April 22
Nice



hi 57°F
lo 36°F

New Service Available at Health Services

Student Health Services is now offering Women's Health Care (including smears and birth control), STD (sexually transmitted disease) screening for males and females, pregnancy testing, emergency contraception and full lab services on campus. Call ext. 8055 for an appointment. All services are confidential.

Wall Of Hope Tile Painting Workshop

This is a RI community service project that is dedicated to the victims and heroes of the September 11th tragedy. It will be on Tuesday April 23rd from 5-7 in the alumni house. The cost is \$10 for materials and pre-registration is required. Call X 8086 for more information or to register.

On-Line Alcohol Screening

The counseling center now offers on-line alcohol screening for members of the RIC community. It is a 10-15 minute evaluation and you will receive immediate confidential on-line feedback as well as ideas on where to go for help. Just go to www.ric.edu then click on campus life/then click on counseling center/ then click on alcohol screening.

Commencement Marshals Sought

Volunteers are being sought for the various commencement activities going on. There is the cap and gown day convocation on Wednesday May 1st, the grad school commencement on May 16th, and the baccalaureate exercises on Saturday May 18th. If you are interested in this please call X8022 to sign up.

Leaders wanted

Do you want to become a resident assistant for the 2002-2003 school year. An RA must be a full time undergraduate student who can hold this responsible position as well as handling their academics. If you have any questions call Brian Dougher at the Office Of Residential Life And Housing at X 8240

Everyone Welcome

Everyone is welcome to weekly open discussion AA meetings. They are held every Wednesday from 12:30-2 pm in CL 231. For more information call The Office Of Health Promotion at X8061.

Mindfulness Meditation

Meditation has been shown to have substantial benefits for the mind and body. This group will offer some beginners some basic instruction for beginners and will give more experienced attendees a regular sitting practice. No appointment is required and it is open to the whole college community on Thursdays from noon-1 pm in CL 130 with Tom Lavin.

RIC Women's Center

The Women's Center would like to inform the college community that they are selling safe sex and sanitary supplies. Condoms are five for a dollar and emergency pads and tampons are 30 cents each. The Women's Center is located in the lower level of DDC-room 9.

Weight Watchers

Deborah Cabral Martin will run another session of weight watchers. The sessions will be on Tuesdays from 1-2 pm in CL 460 for twelve weeks. The cost of the program is \$130 and registration will begin on Tuesday February 5th. If you have any questions call X8026 or email dcabral@ric.edu

Jobs For You

Stop by the Career Development Center/Student Employment Office in CL 054 and they will help find a job suited for you. Here are a few of the available jobs: Cranston Public Schools, Cox Communications, New England Financial, Meditech, First Investors Corp, Attleboro Public Schools, and John Hope Settlement House. There will be more available so call X 8031 or stop by the Career Development Center for more details.

Job Opportunity

In addition The Office Of Residential Life And Housing are looking for loyal and motivated and committed students to work on this summers paint crew. Applications are available at the office of residential life and housing and Sweet Hall and are due by April 19th at 4:30. Any questions call Jeffery D. Zander at X 8240.

Health Services

Any 1992 graduates wishing to obtain their health records may arrange to do so by calling health services at 456-8055. All health records with no activity since 1992 will be shredded in June.

Practice and Improve Your Spanish

The Department of Modern Lan-

guages invites the entire college community to join the Spanish conversation hour from 12-1pm in CL 102. Come and talk about current events, experiences, and interests. For anyone with a basic to intermediate level of Spanish is welcome to attend and for more information call X8711.

Writing Center Tutors Available

The writing center will have writing tutors available Monday-Wednesday from 9am-7pm, Thursday from 9am-4pm, and Friday from 9am-3pm. There is also information concerning writing issues given out in free pamphlets. For more information call 456.8141.

Sunday Mass On Campus

Sunday evenings at 10pm in SU 306 Fr. Pescatello, celebrant. For more information call the Chaplains Office at 456.8168.

Bible Study

Mondays from 12:00-1:00pm in Student Union 300. Conducted by Rev. Larry Nichols. All are welcome call 456.8168 if you have any questions.

Depression Screening

Now the RIC campus can be screened for depression on the RIC Counseling Center's web page. This is confidential and will only take a few minutes to tell you whether or not professional consultation or evaluation would be helpful to you. For any information or an appointment call X8094.

Join BACCHUS

If you are interested in being a charter member of RIC's BACCHUS Chapter (Boosting Alcohol Consciousness Concerning the Health of University Students), call Lauren Dulude at x8345, or stop by the meetings any Wednesday during the free period in Craig-Lee 203.

Now On Sale At The Box Office

Evita Thursday-Sunday April 18-21st. The Turtle Island String Quartet Monday April 22nd. Ballet Concerto De Puerto Rico Tuesday April 23rd. RIC dance Co. Student Choreography Showcase Thursday-Friday April 25-26th. What Makes It Great Friday April 26th, and the RIC Symphony Orchestra on Monday April 29th. For more information or tickets call x8144.

Coming to RIC

Noel Paul Stookey of Peter Paul and

Mary and Michael Kelley Blanchard will be performing is Sapinsley hall on April 20th to benefit Hasbro Children's with a concert called There Is Love for the price of \$18. Lastly Anthony Romero the executive director of the ACLU will come to RIC to speak on April 24th in the Gaige auditorium. Mr. Romero will be speaking on civil rights.

Student Teacher Meetings

There will be two student teacher meetings for those students who will be student teaching next spring all who wish to apply must attend the appropriate meeting. Call x9673 or x9865 to find the appropriate meeting.

Thinking About Kicking Butts?

Call the Office of Health Promotion, 456-8061 to develop a strategy for success. In addition there is a campus focus group being organized that is limited to 30 students. Students get \$25 and free pizza.

Aquatics Programs And Special Events

Swimming Instruction: New swim classes are starting. Sign up at the Recreation Center Front Desk. **Swimming for the Terrified:** Wednesdays at 6:30 pm, **Beginners** on Tuesdays at 11 am, **Intermediate** on Thursdays at 1 pm, and **Sync and Swim** Tuesdays 4 pm to 4:30 (4/2 to 4/16). This program is three, half-hour sessions for those who know how to swim and are comfortable in deep water. Emphasis is on proper breathing technique and building endurance at swimming **Life-guard Training Renewal:** a 12 hour American Red Cross Lifeguard refresher course will be offered on April 5th- April 26th and the fee is \$40 for RIC students. You will receive certifications in life-guarding, first aid and CPR. If you need to renew your Lifeguard Certification before the summer, this is a chance to do it at a reasonable price, right on campus. If you are interested and available during the day Fridays, call Janice at 456.8238. Leave your name and phone number. **Summer lifeguards** are needed at the rec center. The summer schedule starts on may 13th-August 11th. Applications are available at the front desk of the rec center. Come to **Water Way To Relax** to unwind on Friday May 3rd from 1-1:30 pm.

Triathlon Training is beginning for the summer triathlon season so come and get some help with swim coaching for triathletes on Thursday may

2nd 7:30-8:30 pm. For more information about aquatic activities, call Alan at X8227 or Janice at X8238.

POOL HOURS

Monday	7 am - 10 pm
Tuesday	10 am - 10 pm
Wednesday	7 am - 10 pm
Thursday	10 am - 10 pm
Friday	7 am - 4 pm
Saturday	8 am - 12 pm
Sunday	5 pm - 10 pm

Visiting Lecturers

Rabbi William Kaufmen will be speaking on Judaism from 10-12 pm in G 307 on April 16th. In addition Harvey Cormier associate professor of philosophy at SUNY Stony Brook will present a lecture entitled "Pragmatism, Race, And Activism" on April 17th at 2 pm in the faculty center in DDC. All are invited to attend these lectures. In addition there will be a biology lecture on April 17th called "Dissecting Sexual Selection Through Fireflies And Flour Beetles."

Nursing Students To Present Their Findings

Nursing students will present their findings on their senior projects on Tuesday April 25th from 10 am-12 pm it will be located in Foreman C.

Last Call For Senior Pictures

Wednesday April 24th from 11 am-2 pm is the last chance to get your senior photo taken. There is a free sitting, discounted yearbooks at the time of your senior picture. Cash or check is accepted.

Scholarships For Nursing Students

The Albert E. and Florence W. Newton Fund at the Rhode Island Foundation is seeking applications from nursing students who require scholarship assistance for the Fall 2002 semester. Eligibility for the Fund was expanded last year to include not only registered nurses pursuing a bachelor's or advanced degree, but also undergraduate students who are in their final year to become registered nurses. All recipients must be attending a nursing school in Rhode Island. Selection is based on financial need and the number of academic credits an applicant is taking each semester. Awards generally range from \$500 to \$2,500. Applications for this and other scholarships may be obtained from The Rhode Island Foundation web site, www.rifoundation.org.



Hi Honey,

Did you remember to renew your licence? See you friday with the laundry. Buckle Up.

Love,
Mom

To:

My favorite Student
Rhode Island College
600 Mount Pleasant Ave.
Providence, RI
02908



the anchor

Established 1928

Free access to ideas and full freedom of expression.

Student Union Room 308
Rhode Island College
600 Mount Pleasant Avenue
Providence, R.I. 02908

General456-8280
Advertising456-8280
Fax456-8792
Webwww.anchorweb.org
E-mailanchoremail@yahoo.com

Executive editor
Managing editor
News editor
Editorial editor
A & E editor
Sports editor
Photography editor
Layout editors
Copy editor
Graphics editor
Business editor
Technology editor
Public Relations
Ads Manager
Faculty advisor
Professional advisor

William A. Dorry IV
Daria D'Amore
Andrea J. Stewart
Cliff Rebelo
Anthony Geremia
Tiffany Ventura
Brent Robitaille
Scott Pacheco, Antonio P. Rodrigues
Amy Medeiros
Dapper Dan Blouin
Alex "Glych" Franco
Jim Ruggiero
J.D. Salisbury
Adam D. Aquilante
Dr. Lloyd Matsumoto
Rudy Cheeks

Staff:

Heather Bryant, Josh Camara, John Converse, Leslie Crofton, Adam Hutchins, Tessalina Kinnunen, Cameron Moquin, Perri Peete, Patrick Tierney, Erica Waltonen, Karen Whitehead

Distribution

Abel Hernandez

Photography Assistant

Fred "Photo Guy" Bieberbach

Office Support Staff

Kristen Mojowski

The Anchor is student run and published weekly during the academic year. Editorial decisions for The Anchor are made by a majority vote of its student editorial board. No form of censorship will be imposed. Any material found to be unsuitable or unacceptable in the board's opinion will not be published. The views expressed in The Anchor, unless otherwise noted, are those of the individual authors and do not necessarily represent those of The Anchor or of Rhode Island College's faculty, administration or student body. First copy is free, each additional copy is \$2.25.

All rights reserved. Copyright © 2001, The Anchor.

! AUDITIONS !



Tom Griffin's
The Boys Next Door



A Comedy that reveals sometimes being a little
DIFFERENT means being a lot more wonderful.

Rhode Island College's
Department of Music,
Theatre, & Dance
Announces
Auditions for the
Fall Mainstage Show

Audition Dates:
April 29 & 30, 2002
Monday & Tuesday
7-9 PM
The Little Theatre
(NCPA 128)

- The audition will consist of reading scenes from the play; the actual scenes are available in NCPA 133 (Office Suite), on the file cabinet as soon as you enter the office.
- If unable to attend Monday's audition, then you can attend Tuesday's audition. Actors do not have to attend both audition dates, although some "Monday" auditioners will be asked to come back on Tuesday.
- Copies of the play are on reserve at Adams Library on RIC campus.
- Fall Mainstage show dates: October 2-6, 2002.
- Rehearsal begins September 3, 2002 (First day of class).
- The cast includes: 7 men & 3-4 women.
- For any additional information, please contact the director of the show, Dr. Taylor at 456-8639 or JLTaylor@ric.edu.

The Death and Return of Exodus Yearbook

by: Brent Robitaille
Anchor Editor

If you did not purchase a yearbook last year (and odds are that you didn't), you may want to have a look at what Exodus has to offer this time around. Exodus yearbook is that organization on the third floor of the Student Union that always has one or two people in the office when you walk by. The funny thing is, those one or two people represent a significant portion of the yearbook staff. Because there are only seven of them. Seven people to cover every major event taking place on this campus. Seven people to take enough pictures and to write enough words to fill an entire book. Seven people to lay out all these pictures, captions, and stories once they have been collected. Seven people to sell 150 yearbooks every year. And that doesn't even count the beggings, pleadings, and cajolings that need to be mailed to students and administration to request support and orders.

The amazing thing is that all this work was previously done by just two people. Samantha Mendes, the current editor, arrived last year to find the yearbook being carried by a staff of ONE. She discovered an office without computers, desks, cameras, or even tape dispensers. She found that Rhode Island College was the only school in the country that still laid out the yearbook on paper. Welcome to the Stone Age. It's no wonder they had not published a book in three years.

All that was soon to change. This is a year of many firsts for this organization. They got their first computers. They attended their first conference. They are printing their first paid ads. They are doing their first sport write-ups. They are doing their first index, which will allow readers to look up specific students whenever they are in the book. They had their first unveiling. This is also the first year Exodus has sold over 100 books, making their total required revenue. Additionally, Exodus has recruited a new staff, including assistant editor Walter Borden, photography editor Melissa Murphy, and treasurer Katelyn Averill. Filling out the rest of the staff are Suzie Alba, Abbey Brooks, and Beth Coletta.

All of these improvements are showing in the finished product. This yearbook will feature captioned photos, spring break pictures, coverage of the Cotillion, pictures of student organizations, and representation of both dorm students and commuters. We will also see a 9/11 spread, and

the yearbook endsheets will be done in the style of American flags. An additional improvement over previous yearbooks is that this time there will be actual stories, rather than wordless pictures. Among other things, Exodus learned a few journalism skills at the conference that they recently attended.

Still, even after making all these improvements, Exodus needs help. Graduating seniors need to show up to have their pictures taken, and there is only one photo session left. If you are graduating, please try to show up in the student union on April 24, from 11-2 or 3-6 to have your picture taken. It costs nothing. Once you have your picture in the book, however, you may want to think about actually buying it. Mendes is amazed at the people who have their picture taken for the book but who have no interest in buying it. What else will you have, years down the road, to remind you of your time at RIC? Besides the stacks of Anchors that you have saved in your basement, that is. The book only costs \$40, and orders can be placed at the yearbook office in SU 305, or by calling extension 8257.

In addition to orders, the yearbook would also love to have additional participation. Their goals for next year are to produce a bigger book (over 200 pages), to have more senior pictures, more color spreads, and more stories covering events on campus. To do all this, they need staff members. Exodus is currently seeking photographers, and anyone fun and/or creative. You don't need to give too much of your time - you could contribute as little as five minutes a week. You can even send your spring break photos, or photos of any other even happening on campus. Just bring them to Exodus for five minutes - they will copy them, give them back, and send you on your merry way.

Very little is required to participate in Exodus. There is much to be gained, however. Mendes attributes the yearbook's former lack of success to its poor quality. All that has changed, however. Exodus is even going to enter competition for a most improved yearbook award. It's a good thing, too, because the yearbook is a vital organization on campus. How much money are alumni going to contribute to RIC if their yearbook, the only piece of memorabilia they may carry from graduation, is of inferior quality? "Not one dime," asserts Mendes. Once Exodus has transformed itself from a 132 page black and white to an award winner, RIC will truly have something to be proud of.

protest from front

Residential Life and Housing stated that the policy was generated by the College Admissions Department as a means to attract more freshman students to Rhode Island College. The policy itself is not a new innovation and has become common in many collegiate institutions. The reason generally given for these policies is that the college is trying to be more competitive in attracting incoming freshman. Many college/university newspapers have found that though this may be true often times an equally important objective is increased revenue. The reason that this policy generates added revenue is as follows:

1. A current student is displaced from the dorm to facilitate a opening for an incoming student.
2. The current student that was displaced, though angry, still stays enrolled because of the significant time and money invested in the institution.
3. The college therefore recognizes the gain of the new student and the continued enrollment of the current student.

The Anchor attempted to contact the Admissions Department, however no one was available to answer questions.

Student leaders said that they planned to continue supporting any students that were willing to participate in the "camp-in", but did note that they would discontinue the protest when and if a constructive dialog was opened with Administration.

The Rock Hunt

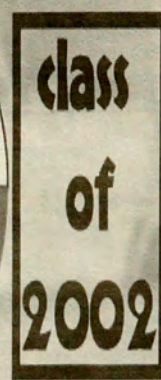
ric's annual battle of the bands

tuesday nights
from march 19th
to may 7th

in the Student Union Ballroom
door at 7.30 show at 8

if you're in a band,
know a band,
or have no musical talent
yet think you can compete,
contact dave @456.8541
daria or tony @456.8280

sponsored by:



Elections for Psych Society will be held on April 17, 2002

**All nominations for offices are to
be handed in by April 16 at
noon to Dr. Sugarman**

**the ballot box
is located on the 3rd floor
of Horace Mann (ask secretary)**

Any questions contact 456-8015

Undergraduate Refrendum

1. Due to a shortage of available beds in the Resident Halls of Rhode Island College, Student Community Government Inc. should request that the administration form a committee to explore the various possibilities of constructing a new dorm for students.
2. In order to continue funding student organizations at current levels, Student Community Government Inc. should pursue an increase in the student activity fee (\$20 full time per semester / \$3 per credit part time).

**for more information
call 456 - 8088**

(Wed) April 24th 12:00 pm - 2:00 pm Quad/Donovan
9:30 pm - 11:30 pm Weber Hall Front Desk
9:30 pm - 11:30 pm Thorp Hall Front Desk
9:30 pm - 11:30 pm Willard Hall Front Desk
9:30 pm - 11:30 pm Browne Hall Front Desk
9:30 pm - 11:30 pm Sweet Hall Front Desk
(Thu) April 25th 11:00 am - 3:00 pm John Nazarian Center
(Tue) April 30th 11:00 am - 3:00 pm Quad/Donovan
(Wed) May 1st 10:00 am - 4:00 pm Student Union

Rookie paces Anchorwomen softball

By: Kristen DiChiaro
Anchor Contributor



Rachael Caldwell

The Rhode Island College softball team is off to a 13-4 start this season. The Anchorwomen are currently in first place in the highly competitive Little East Conference and lead the league in batting with a .326 team average and in scoring with 6.10 runs per game. Of the team's 13 members, seven of them are batting over .300. One of those seven is freshman catcher Rachael Caldwell.

Caldwell is third on the team with a .385 batting average and second with 20 hits and 12 RBI. She was named the LEC Rookie of the Week for the week of Apr. 1. She roped six hits, including a double and a triple in 12 at-bats for a .500 batting average, helping RIC to a 3-1 record that week. She was a perfect 3-3 with two runs and two RBI in the 8-0 win over Keene State on Mar. 30.

The Wood River Junction, Rhode Island native came to RIC after a successful high school career at Chariho Regional High School where she was a four-year letter winner in softball. The 2001 graduate was named First-Team All-Division and also captained the team her senior year.

Caldwell is enjoying the success of the Anchorwomen this season and credits her

teammates for her own success. "They're very supportive. If I strike out or ground out, they're always there to pick me back up so I can get back out there and hit the ball well," says Caldwell. "The whole team is hitting the ball really well. You can go down our whole lineup and everyone has RBIs and base hits. We don't have one person that stands out in the lineup; it's all spread out evenly."

The Anchorwomen's depth in their roster has helped them win 12 of their last 14 games, outscoring their opponents 84-20. "All the girls are good. There's not one bad player on this team," says the 5'5" Caldwell. "In high school there wasn't as much depth on my team as there is here."

With half of the season completed, the team is looking towards the LEC playoffs. The team will face their toughest competition over the next three weeks with games against LEC rivals Plymouth State and Western Connecticut.

"We haven't had a lot of conference games yet, so our competition hasn't been that tough, but we're going into our prime spots soon so that will be our true test," says Caldwell. "If we keep playing the way we are, we should be in pretty good shape. We just need to keep playing with the same intensity every game."

Fanelli Earns Little East Player Of The Week Honors

By: Scott Gibbons
Sports Information Director

Rhode Island College junior Michele Fanelli (Pembroke Pines, FL) was named the Little East Conference's Player of the Week for her performance in softball last week.

Fanelli, a first baseman, batted .600 (9-15) with three runs scored, seven RBI, two doubles and a triple in a 4-0 week for the Anchorwomen. She went 7-8 with five RBI, a double, triple and a run scored in two wins over LEC rival Southern Maine.

For the season, Fanelli has played in 15 games, starting all of them. She is

batting .474 with 13 runs, 27 hits, five doubles, two triples and 20 RBI. She is second in the LEC in hits and RBI, and is fourth in batting. She is a communications major and a 1999 graduate of Cooper City High School (FL).

Head Coach Maria Morin's Anchorwomen are 12-3 overall and 3-1 (first place tie) in the Little East Conference. RIC won all four of its contests this past week. The Anchorwomen shutout Babson College 2-0 on Apr. 2. RIC defeated Worcester State 8-1 at home on Apr. 3. In Little East action, the Anchorwomen swept Southern Maine on Apr. 6 (4-2, 6-2).

PJ Lague RIC Rugby President Bridgewater State Tournament

by: Keith Lazarski and PJ Lague

The first tournament of the semester pitted the Rhode Island College Anchormen against seven other teams from Southern New England. This is the first invitation the RIC club had into the Bridgewater State Tournament and didn't disappoint with a 2nd place finish.

Play began with an early match against the Bridgewater State Visigoths. Both teams fought valiantly as it proved to be a defensive battle. The lone points of the match came in the first half as Brian Flammant capitalized on a penalty conversion which placed the Anchormen with a 3-0 advantage.

The second half of the match kept the Anchormen in their half of the field the majority of the time. Over 20 minutes was played with the Visigoths challenging the RIC men within 10 meters from their endzone, each time the Anchormen sending Bridgewater away empty

handed. The end result was a Anchormen victory.

Second round, RIC matched up against Weaton College. Weaton jumped to a quick 5-0 lead in the first few minutes of the match. Quick to answer was Brian Flammant with a nice setup pass

- 10 and placed the club into the championship round against Springfield College.

Unfortunately, the finals proved to be a let down as Springfield leaped to a 21 point lead. Springfield took advantage of a tired Anchormen team. There were a few injuries in the scrum positions that led the referee to call for uncontested scrums as the pack collapsed dangerously. There isn't much for the way of highlights from this game except the fact that the team didn't give up.

The game ended with Brian, again, converting a penalty opportunity to make the final score 21-3.

Overall, a very successful weekend. The rookies that played last semester now know what it takes to win, now they will learn what it means to be consistent.

The Anchormen leave Bridgewater with second place and head confidently into the Bryant College Tournament April 13, where they face Springfield again in the opening round.



Anchormen hold back the defense of Weaton College while PJ Lague puts the ball out.



Don't wait for the 15th of every month. At UPS, paychecks are weekly.

**PART-TIME
PACKAGE HANDLERS**

\$8.50-\$9.50/Hr

Excellent Benefits

Weekly Paychecks

Weekends & Holidays Off

3-1/2 to 5 hour work shifts

To inquire, please call:

1-888-WORK-UPS

Or visit: www.upsjobs.com

Equal Opportunity Employer

Dusablon Earns Little East Baseball Rookie of the Week Honors

Dusablon Earns Little East Baseball Rookie of the Week Honors
By: Scott Gibbons
Sports Information Director

Rhode Island College freshman Glenn Dusablon (North Smithfield, RI) was named the Little East Conference's Rookie of the Week for his performance in baseball last week.

Dusablon, a pitcher, picked up a pair of triumphs last week earning the win in a starting assignment against Suffolk and coming on in relief to record a win against Salem State. He posted a 2.25 ERA with six strikeouts in eight innings of work.

For the season, he has appeared in six games, starting four of them. He is 2-1 with a 4.72 ERA and 21 strikeouts in 26.2 innings pitched. As a hitter, he has played in six games, starting four of them. He is batting .400 with one run and two hits. He is a 2001 graduate of North Smithfield High School.

Head Coach Jay Grenier's Anchormen are 4-14 overall and 0-4 in the Little East Conference. RIC went 2-2 on the week, defeating Suffolk University 7-5 on Apr. 2 and Salem State College 7-3 on Apr. 4. In Little East action, the Anchormen were swept by Keene State College on Apr. 6, falling 5-3 in both games.

Riley, Emmons and Deveau Earn Pilgrim Wrestling League Honors

Riley, Emmons and Deveau Earn Pilgrim Wrestling League Honors
By: Scott Gibbons
Sports Information Director

Rhode Island College junior Mike Riley (Lowell, MA), sophomore Luke Emmons (West Greenwich, RI) and freshman Justin Deveau (North Attleboro, MA) were named Pilgrim Wrestling League All-Stars.

Riley was named a Pilgrim Wrestling League First Team All-Star. Riley earned All-New England honors, placing third at the New England College Conference Wrestling Association (NECCWA) Championships at 133 pounds. Riley had a 28-match winning streak stopped at the championships. He was named the team's MVP this winter. The co-captain was 37-6

(.860) with 163 points, 128 takedowns, ten reversals, 48 escapes, 21 near-falls and four wins by fall on the year. Riley established a new school record for wins in a season with 37. He placed first at the Citrus Invitational on Dec. 29, second at the Scranton Invitational on Dec. 1, third at the Roger Williams Invitational on Nov. 10 and fourth at the Doug Parker Invitational on Nov. 17.

Emmons was an Honorable Mention to the Pilgrim Wrestling League All-Star Team. He was 25-16 (.609) at 141 pounds with 113 points, 40 takedowns, 21 reversals, 33 escapes, 12 near-falls and eight wins by fall on the year. Emmons moved into a tie for tenth place among RIC's career pin leaders with 13. He took fourth place at the Scranton Invitational on Dec. 1.

Deveau was named a Pilgrim Wrestling League Second Team All-Star. He earned All-New England honors, placing second at the NECCWA Championships at 197 pounds. He was 31-15 (.673) at 197 pounds with 135 points, 33 takedowns, 15 reversals, 37 escapes, 12 near-falls and eight wins by fall on the year. He placed third at the Roger Williams Invitational on Nov. 10 and took fourth place at the Scranton Invitational on Dec. 1.

Head Coach Jay Jones' Anchormen closed out the 2001-02 season with a 10-13 overall record, an 8-7 regular season finish in the New England College Conference Wrestling Association (NECCWA) and a 2-3 mark in the Pilgrim Wrestling League. The Anchormen finished 12th out of 15 teams at the 2002 NECCWA Championships.

New Grads:

Let US help pay off your student loans
Get a great start with Genesis ElderCare

Genesis ElderCare is rapidly growing, offering excellent opportunities for starting new careers with several locations to choose from:

We seek to fill the following positions for our multidisciplinary teams:

- RNs • LPNs • CNAs
- Physical Therapists
- Occupational Therapists
- Speech Therapists


• Locations •

Grandview Center—Cumberland, RI
Kent Regency—Warwick, RI
Grand Islander Center—Middletown, RI
Groton Regency—Groton, CT

Come in and talk to us about what we can do for your career. At Genesis ElderCare, we have changed the world of long-term care for the better. We offer flexible scheduling and a great benefit package including vision, dental and Blue Chip Health Insurance.

Call Melinda Jewell at 401-439-0144 for immediate consideration.

We are an equal opportunity employer.

 **GenesisElderCareSM Network**

It's here!

SENIOR WEEK 2002!!

SUNDAY	MONDAY	TUESDAY	WEDNESDAY	THURSDAY	FRIDAY	SATURDAY
MAY				9 Medieval Manor (Dinner)	10 SkyDiving-AM Paintball-Afternoon	11 Nova Scotia Cruise
				12 Nova Scotia Cruise	13 Bay Queen (Lunch)	14 Niagara Falls
	15 Niagara Falls	16 Niagara Falls	17 BBQ-lunch Rehearsal	18 Graduation!!		

Cost per person per event: (FIRST COME-FIRST SERVE!!)

Medieval Manor (21+):	Seniors: \$ 15.00	2 nd Price: \$ 20.00
Sky Diving (18+):	Seniors: \$ 102.00	2 nd Price: \$ 107.00
Paintball (18+):	Seniors: \$ 20.00	2 nd Price: \$ 25.00
Nova Scotia (21+):	Seniors: \$ 65.00	2 nd Price: \$ 70.00
Bay Queen (21+):	Seniors: \$ 15.00	2 nd Price: \$ 18.00
Niagara Falls (21+):	Seniors: \$ 65.00	2 nd Price: \$ 70.00
BBQ:	Seniors: FREE!	2 nd Price: FREE!

Tickets will be on sale at the Student Union Info Desk

SENIOR SPECIAL! April 10-19 >> SENIORS ONLY,

"SENIORS" PRICE

April 22 >> OPEN TO ANYONE, 2nd PRICE FOR EVERYONE

Email DiCicco80@aol.com or see the SU Info Desk for more information.

** Tickets are limited for all events so buy yours right away!



SECTION EAR INFECTION

Dan & Jessica Present . . .

Dancers in the Dark (. . . Dingy Basement)

-As Told by Jessica

I'm sure all of you RIC students attended the Cotillion this past Friday... and how could you not? What better way to swing into Spring than with a state college sock hop? I'm sure I was the most fun any of you have ever had in your lives. I know it would've been for me, but I had to work. You see, Me and Dan were all set to go when my boss called with a record store emergency. It seems the new "Jimmy Eat World" CD was flying off the shelves and he needed my cashier expertise and social prowess to save the day.

Anywho, by the time I got out of work and to Dan's house, he was all dressed up in his father's old tux from the 70's sit-

ting pathetically on his couch watching a Power-puff Girls Marathon. But it wasn't really a marathon. It was just a tape of episodes he'd taped the night before. But there were only 2 episodes on it..(well, one and a half, to be exact) and he just kept rewinding it and watching it over and over and over...

So we were sitting there all sad and depressed (as usual) and then Dan sprang up and said "Hey! I know what we could do! We could have our OWN Cotillion in my basement! You decorate whilst I go get some music." So I went up to the attic and found a broken disco ball. After I killed the black widow and her eggs that were living inside it, I

brought it down to the basement and hung it on an old rusty nail that was sticking out of the wall. Then Dan came down with a walkman and a cassette, but as he was walking he tripped over a box of broken light bulbs and dropped the walkman. It wasn't broken, except for one of the earphones. Anyway, then he sat it up on the table and turned it up to FULL VOLUME. We had to be really quiet so we could hear it. The song was "Lady in Red". But it wasn't even the real version. It was a cover by Regis Philbin.

As you can probably tell, our lame attempt at a good time was failing miserably. I mean, let's face it: how could Dan and I ever hope to compete with

a big event put on by the good folks at RIC Student Programming? Anyway, it was getting kind of awkward and uncomfortable down there. Every time I tried to make conversation Dan would shush me so he could listen to Regis's sweet siren song. (...well, COVER siren song....) Finally, despite Dan's constant shushing, I managed to tell him I was cold and hungry and something was crawling up my leg. After he shushed me a couple of times he offered me some pickled rat-heads and some scum smoothies. But the lack of variety was stifling, and so was the lack of oxygen in Dan's basement. (He has a Zyklon B gas leak) You know whenever we're down there we have to keep moving. Usu-

ally we jog in place, or jump rope with old telephone cords. If we stay still for too long, we'll die. We found that out the hard way.

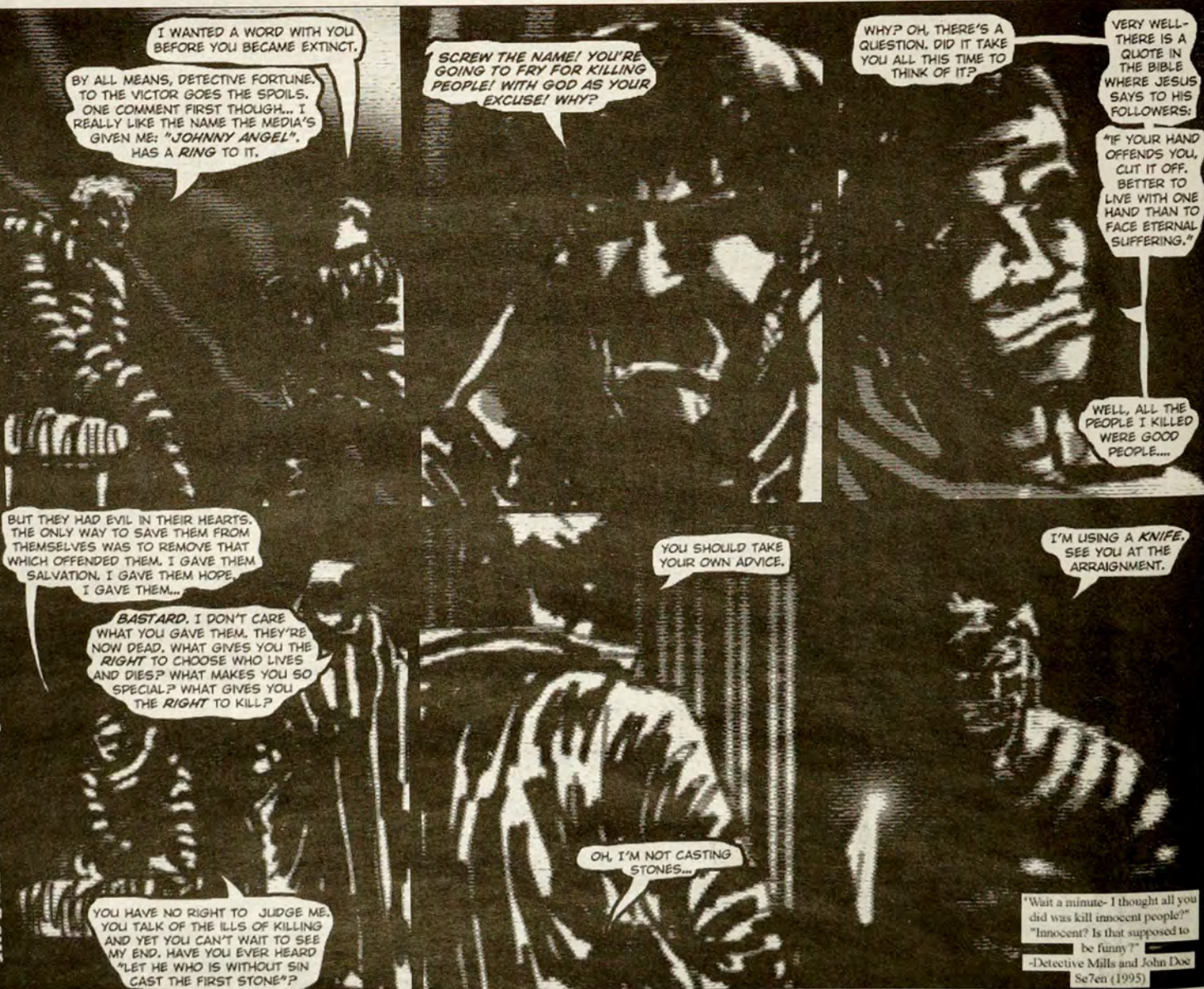
Well, to make a very long story less long, after Dan's very tedious kazoo rendition of "McArthur Park" and a couple of warm non-alcoholic beers we called it a night. You know, it's weird- we don't really have to hang out in Dan's basement. And we really don't need to eat scum. Dan's parents are actually quite wealthy, and my parents own the rights to Royal Crown "RC" cola. The point is, Dan and I don't have to be miserable by proxy, but our destiny deemed otherwise.

By: JD Salisbury

Digital Art by: Dan Blouin

Victim of Chance

"The Ballad of Felling Angelo," Part Seven.



SECTION EAR INFECTION



Daily Proverb:

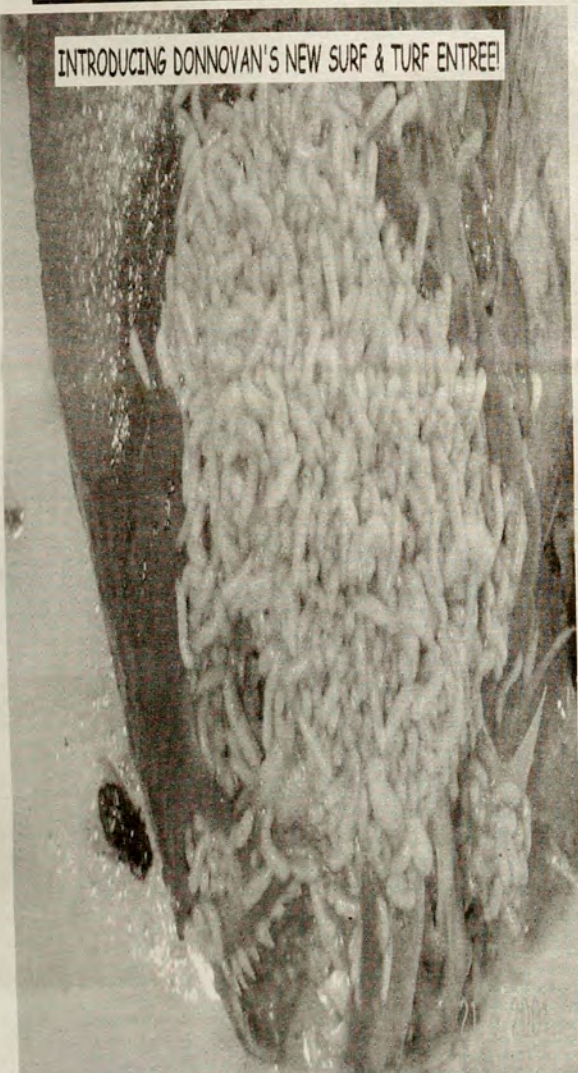
If a cat always lands on it's feet and bread always lands buttered side down, then what would happen if you buttered a cat's back?

THE FACES OF SCOTT

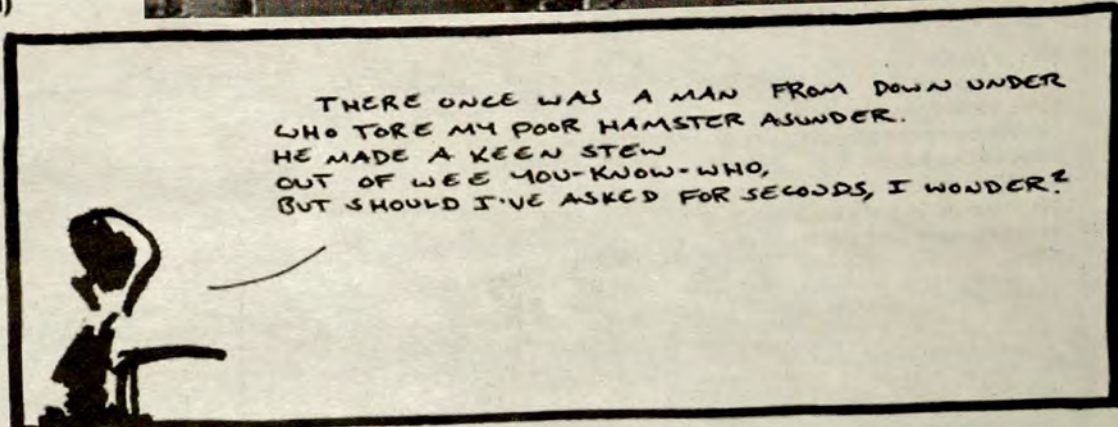
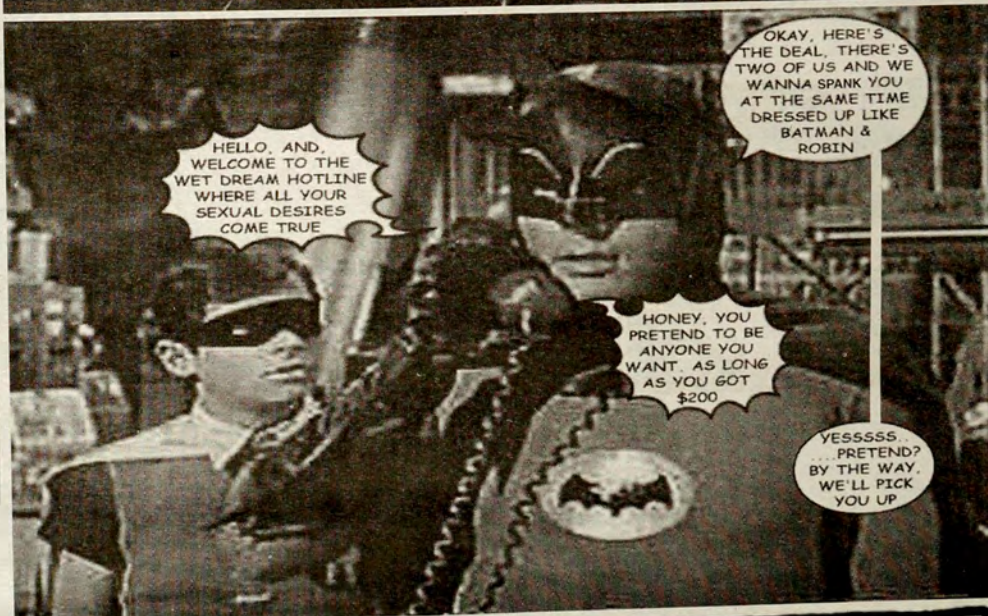


THE OLD MAN

INTRODUCING DONNOVAN'S NEW SURF & TURF ENTREE!



Buttercup Festival
by Elliott G. Garbauskas
(elliottgg@buttercupfestival.com)





roving reporter

by J.D Salisbury

If you could change one thing in Donovan, what would it be?



John Kirkland-Fontenault
English
First Year Student
One word: Taco Bell!



Jake Harvey
Music
Sophomore
I would like to change the over-priced, low quality food.



Audra Malinowski
Music
Sophomore
I would like to change the service at Donovan, because it sucks.



Jess Velloct
Film Studies
Sophomore
I wouldn't change a damn thing. It's perfect in almost every way.



Chieu Le
Nursing
Sophomore
The food, because the food's crappy.

Dana Benvenuti
Psychology
Third Year Student
I wish Donovan was open a little later, because my classes don't get out until 9 and I'm starving, so I'd be able to eat without spending money I don't have.

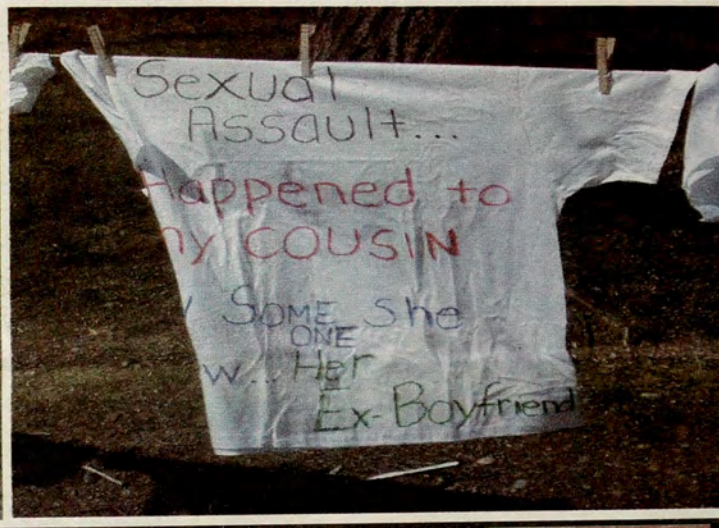


Rebecca Bissonnette
Elementary Ed
First Year Student
I think Donovan should switch around the food a little bit, so it wouldn't be the same thing week after week. It gets boring when you live here and eat it all the time.



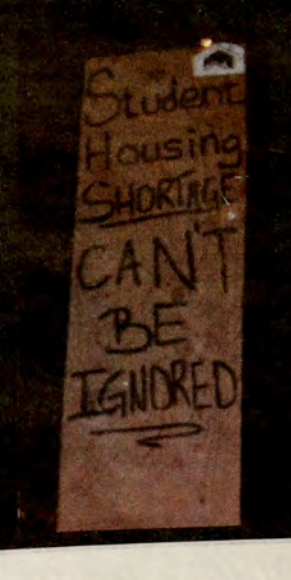
Jessica Warner
Early Childhood/ Special Ed
Junior
I'd make the food selection a little more diverse with more ethnic foods.

around campus



Above: Some pictures from the Women Center's sexual assault awareness event held last week.

Below: Students get ready to "camp-in" on the Presidents lawn to protest the new dorm policies.



Moving On . . . Out?

by: Cliff Reblo
Anchor Editor

Something fishy is going on at Rhode Island College.... What else is new? In case you haven't heard, an estimated

Cliff's Corner

one hundred five dorm students may be losing their rooms next year if our lovely superiors here at RIC have their way. A new plan is supposedly going into effect which will guarantee every freshman next year a room, well the ones who want to live here anyway. Now think about what this means for you, the dorm students. If every freshman who wants to live on campus gets a room next year, where are the current residents going to go? It sounds a little crappy doesn't it? Well if it does, that's because IT IS! It's ridiculous that someone or some people out there think they have the right to force over one hun-

dred students out of their rooms next year, just to keep the freshman happy.

Since when did we become so concerned with freshmen anyway? You would think that someone out there would be more concerned with improving the environment on this campus instead of wasting their time by figuring out a way to lure freshmen into coming here. It's sad that the only thing this

campus will have to entice any new students is the fact that they will be guaranteed a room to sleep in. Well, what's going to happen once they actually GET here and realize that a free room isn't enough to make up for the deteriorated buildings and trash on the ground? Instead of figuring out new ways to make more money, why don't the "leaders" at this school figure out new ways to improve our education by improving the surrounding factors which influence it.

If you haven't noticed, there are a number of tents sitting outside of the president's house right here on this campus. Those tents belong to

students, infuriated students who do not feel that they are being treated fairly. They are out there protesting these "rules" and want something done about them. They either want a new dorm to be built somewhere on this campus to accommodate all the students or they want this new policy thrown out the window. I do not live on campus but I have to say if I did, I would be out there camping out in my own little tent. If they are going to be treated like dirt, they may as well spend a week sleeping on it. After all, if our great leaders have their way, many students will in fact be thrown out into the streets and will have to find a new place to live... as if getting your education wasn't enough stress. If you guys don't feel like camping out on the president's lawn, there is something else you can do to help. Take a walk over there and show your support by signing the petition which will be floating around out there. This is your chance to fight back guys, don't let it go to waste. If you sit back, cross your fingers, and do nothing, I don't want to read your complaints if you get to be one of the unlucky ones thrown out on your ass next year.



Today it takes more to become
an accountant. Where do
students go to get the most?

Bentley College. Beginning in 2002,
students need 150 hours of class time
to sit for the CPA exam. Fulfill this

requirement with Bentley's renowned Master of Science in Accountancy (MSA) program—the first in Massachusetts to receive the prestigious accountancy accreditation from AACSB International. Whether beginning or advancing your career, Bentley's MSA provides a high-tech education in all areas of accounting, from financial and managerial to accounting information systems. Gain exposure to the latest technology and top practitioners in the public, corporate and nonprofit sectors. It takes something extra to be an accountant. See how much extra Bentley has to offer. Visit us online or call 781/891-2000.

BENTLEY COLLEGE

The Business School
for the Information Age

www.bentley.edu/gr/racc



CFO

Fashion Outlet

Our Mission:

At CFO, our mission is to bring to our customers the finest quality mall specialty store and big name catalog clothing every day at prices that are guaranteed to be from **50% to 75% OFF** the regular retail or catalog price.

REGISTER TO WIN
\$100 CFO FASHION OUTLET SHOPPING SPREE!

Name _____
Address _____
City _____ State _____ Zip _____
Daytime Phone _____ Evening Phone _____

No purchase required. Bring entry form in to your nearest CFO Fashion Outlet by 5/4/02. RIC 4/16.

Cumberland • Warwick • Smithfield • Seekonk • No. Dartmouth
CALL 1-800-CFO-OUTLET FOR DIRECTIONS

Letter To The Editor:

Rudy Cheeks Professional Advisor to The Anchor

Last week in "Cliff's Corner," columnist Cliff Rebebo suggested that members of the RIC community write in to The Anchor to share their ideas on the fate of the Coffee Ground. Apparently there are no solid plans at this time for what form the new campus "eating, drinking, relaxing and socializing" area will take.

Why doesn't the school consider a contract with a business like Ocean Coffee Roasters? They are a small Rhode Island company yet large enough to operate a few excellent cafes (in Newport and on Waterman St. on the East Side of Providence) featuring beverages, pastries, sandwiches, bagels, etc. And their wide variety of coffees are absolutely first rate.

If the school is considering outside vendors to run the Coffee Ground, it would be my preference that it be a locally owned and operated company. I would think that a local company would also be more flexible in crafting a contract so that, for instance, RIC students could be given hiring preference.

P.S. By the way, I am old enough to remember when The Coffee Ground was the Rathskeller and beer and wine were served. I have fond memories of playing with my then-band (The Fabulous Motels) at the RIC Rathskeller. This was around 1971. If I remember correctly, another young musician, John Cafferty, who was attending RIC at the time, was managing the place. His Beaver Brown Band did rather well for themselves.

Good Till the Last Day What To Do With The Coffeeground

by J.D. Salisbury
Anchor Editor

As I start to write this, a film quote comes to mind. The quote reads, "I always find it adds a certain level of drama to have some personal tragedy occur." I can now say that I understand what was said.

When the Coffee Ground closed, I didn't know how to react. Sure, I didn't work there, but I spent my fair share of time there. I knew most of the employees, and was friends with them. I did my "Roving Reporter" section down there. Every morning, I'd buy a couple Otis Spunkmeyer cookies. More or less, I just spent time there. And then, one day, it just up and closed. The best way to describe

what it felt like was to compare it to high school graduation. I still had my friends, but I don't get to see them as often as I like. I have little direction and cannot figure out to do with my life. In short, I feel lost as many people do. We don't have a place to stay in between classes. Donovan's too noisy to really do work, or sleep, and you can't eat in the library, so what are we to do? Where can friends go to just spend time? I think I have an idea.

Many people enjoyed the fact that the Coffee Ground had the atmosphere of a coffee house, so why not continue with this theme. Many students seem open to the idea of having a relaxing set up, so why not continue with a coffee house. This new one wouldn't have to be Donovan op-

erated, but would have to have couches and games that would keep students occupied. Also, it would allow for student jobs, as to not alienate students in need of work. In short, I would like to see a more structured version of Coffee Ground. An alternative to this would be Starbucks, but the problem with something like this is that as a corporation, it would not have to hire on campus. It could, but wouldn't have to.

Students pay all this money in tuition to have activities and student life. Shouldn't we use that money toward something to students want? The students seem to want an area to lounge and work, a place where they can just relax. Is that so hard to ask? A coffee house just seems to make sense.

ATTENTION P.E MAJORS

WANNA EARN A PROFESSIONAL
POINT ?

JOIN US FOR JUMP ROPE FOR HEART

Date: April 24th during free
period

Time: 12:30 on Wednesday



A small
donation will
gladly be
accepted on
the day of the
event

@ the RIC
Athletic Building
in the Gym

So come and join in on
the fun and learn how to
run your own jump rope
for heart rope for heart.

Teacher Mara Sidmore loves the theater.

Just ask the students she teaches every day. But when it came to her retirement portfolio, she wanted a little less drama.

So she turned to us, a fund manager known for a steady hand. In these volatile times, we can help people build portfolios that are anything but.

Now she saves all the theatrics for the stage.

Log on for ideas, advice, and results. TIAA-CREF.org or call 1-800-842-2776



Managing money for people
with other things to think about.

RETIREMENT | INSURANCE | MUTUAL FUNDS | COLLEGE SAVINGS | TRUSTS | INVESTMENT MANAGEMENT

Mara Sidmore became a participant in 2000, TIAA-CREF Individual and Institutional Services, Inc., and Teachers Personal Investors Services, Inc., distribute securities products. © 2001 Teachers Insurance and Annuity Association-College Retirement Equities Fund (TIAA-CREF), New York, NY. Mara Sidmore was compensated.

Outdoor Adventure Club

Make good use of your \$40 Student Activity Fee

Great leadership opportunities available

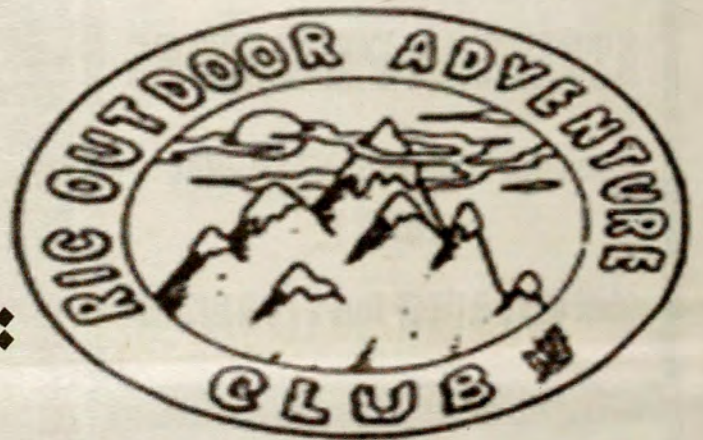
Everyone Invited

Enthusiastic Freshemen Highly Encouraged

Officers Needed

For information please email:

AdamJStanley@yahoo.com



**CAMP OUT ON THE
PRESIDENTS LAWN**

**Stand AGAINST Kicking Residents Out
Stand FOR Building A New Residents Hall**

**UNTIL
WE
WIN!!!**

**TENTS PROVIDED BY SCG INC
JOIN THE REVOLUTION**

Show them you mean business



RIC Chess Club

Come Join a National
Championship Contender



Free Lessons Available,
Play Games All The Time,
Extensive Library, Computer Access, Travel

RIC Chess Club
Student Union 204
456.8175
<http://scg.ric.edu/chess>

Class of 2002

Senior Pictures

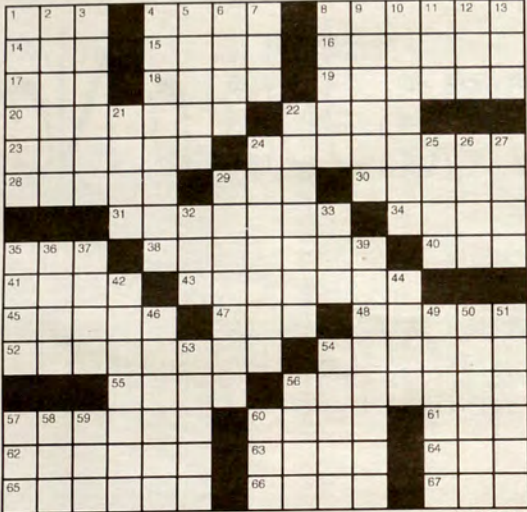
April 24th
11:00 to 2:00
3:00 to 6:00

FREE • no appointment necessary • any ?'s
call x8257 • discounts available if you
purchase a yearbook on those dates



Crossword

- ACROSS
- 1 Snooze
 - 4 Pierce
 - 8 Aircraft maker
 - 14 Black cuckoo
 - 15 Holler
 - 16 Evangeline's home
 - 17 Ebullience
 - 18 Dark blue
 - 19 Disrobes
 - 20 Old-time jar
 - 22 Piper's first name?
 - 23 Decrepit car
 - 24 Phonograph trademark
 - 28 Butter subs
 - 29 Label
 - 30 Poisonous shrub
 - 31 No-win situation
 - 34 Small amount
 - 35 EMT procedure
 - 38 Snake
 - 40 Turner or Mack
 - 41 Wander aimlessly
 - 43 Molar
 - 45 Actor Ed
 - 47 Gallery display
 - 48 Main artery
 - 52 Harmless fib
 - 54 "Monkey Business" director
 - 55 Dash
 - 56 Listened to again
 - 57 Reverses the effect of
 - 60 Sub shop
 - 61 Blount or Blanc
 - 62 Laments
 - 63 In a short time
 - 64 Before, to a poet
 - 65 Before you know it
 - 66 Round instrument
 - 67 Laver of tennis
- DOWN
- 1 Southwest people
 - 2 Type of magnetism
 - 3 Zit
 - 4 Brief summary
 - 5 Inclined to weep
 - 6 Edison's middle name
 - 7 Journalist Nellie
 - 8 No-frills
 - 9 Groups of eight
 - 10 Tympanic membrane
 - 11 Brutal Amin
 - 12 Tuck's partner
 - 13 Element classification
 - 21 Thug
 - 22 Coloring substance
 - 24 Bloodsucker
 - 25 Leave out
 - 26 Tardy
 - 27 Served perfectly
 - 29 Topography
 - 32 Journey part
 - 33 Common conjunction
 - 35 Bird's crop
 - 36 Luxurious
 - 37 Hindu queen
 - 39 Schooling
 - 42 Shooting stars
 - 44 Actor's part
 - 46 Become less rigid
 - 49 Hole-enlarger
 - 50 Bullfighter
 - 51 Confused
 - 53 Lariat
 - 54 Casaba, e.g.
 - 56 Gambling city
 - 57 Ref's relative
 - 58 Also not
 - 59 Scheduled
 - 60 Diplomat
 - Hammarkjöld



© 2002 Tribune Media Services, Inc. All rights reserved. 04/16/02



classified ads

Attention 13 - 19 year olds
YOU CAN earn \$50-75 BY PARTICIPATING IN "Project Smoke Out" a study sponsored by Brown University. Smokers between ages of 13-19 may be eligible to participate in a study aimed at learning more about nicotine and teens. Free transportation is available, if needed. For more information, contact Lisa at (401) 444.1802 or email ProjectSmokeOut@brown.edu

three hour fundraising event. **Does not include credit card applications.** Fundraising dates are filling quickly, so call today! Contact Campusfundraiser.com at (888) 923.3238, or visit www.campusfundraiser.com

Drivers Wanted
Looking for Conneticut students, male/female to sell Good Humore ice cream from our vending trucks this summer. **\$9.50 - 12.50/weekly routes** in your area, apply now. Bring a friend. Call Monday - Friday 9am - 3pm only 1-800-899-1009

Fraternities, Sororities Clubs, Student Groups
Earn \$1,000-2,000 with the e a s y Campusfundraiser.com

Rhode Island College

Inter Varsity
Christian Fellowship

InterVarsity Christian Fellowship (n.): a group of people who get together to serve the RIC community, form lasting friendships, have a lot of fun and explore God and spirituality.

Interested? Come!
Wednesdays 12:30 - 2
Nazarian Center 188
snacks provided

Call for info: Terri 521-7855 or James 274-2955

classified ad form

Classified ads cost \$1 for members of the college community. For anyone who is not a member of the college community, classified ads cost \$3 for 30 words, \$5 over 30 words. Please limit classified ads to 50 words.

Date ad placed: _____ Date of issue: _____

Classification:

<input type="checkbox"/> For Sale/ Rent	<input type="checkbox"/> Help Wanted	<input type="checkbox"/> Roommates
<input type="checkbox"/> Services	<input type="checkbox"/> Personal	<input type="checkbox"/> Miscellaneous

Print ad: _____

Name: _____ Telephone: _____

For verification purposes only.

Classified ads will be unacceptable if this form is not filled out completely.
Classified ads may be placed, with payment, at The Anchor, Student Union room 308.

by Linda C. Black

To get the advantage, check the day's rating: 10 is the easiest day, 0 the most challenging.

Aries (March 21-April 19) - Today is a 7 - All is not easy yet. You're learning quickly, but it's partially out of necessity. That's OK - that's the way you learn best.



Taurus (April 20-May 20) - Today is a 7 - Your confidence is growing, and with good reason. Your income is growing too, but watch out. The temptation to spend is strong. Buy only the stuff that's been on your list for a year. Save some money for food.



Gemini (May 21-June 21) - Today is an 8 - You're full of spit and vinegar. You're about to



instigate something totally outrageous, and you're probably going to get away with it - if it's legal and healthy.

Cancer (June 22-July 22) - Today is a 6 - Other people think it's easy for you, because you're always prepared. You know otherwise. You're scurrying and worrying behind the scenes now, but by Thursday you'll be ready, right?



Leo (July 23-Aug. 22) - Today is an 8 - You're very cool, but you're a fool if you think you can do everything. You have a whole team of people who want to help. You're strong, but with them you'll be awesome.



Virgo (Aug. 23-Sept. 22) - Today is a 6 - They're insisting upon changes, but do they

know who, what, when and how? Probably not. If you don't, either, don't get pushed into a hasty decision.



Libra (Sept. 23-Oct 22) - Today is a 9 - Money is still tight, but the coast is clear. Launch projects, take trips, sign up for classes. Love will even go well if you let your practical side be exposed. Don't have one? Link up with somebody who does.



Scorpio (Oct. 23-Nov. 21) - Today is a 6 - There's a lot of wheeling and dealing going on. Pay attention so that you don't spend too much. Your experience pays off when you recognize a great bargain and grab it.



Sagittarius (Nov. 22-

Dec. 21) - Today is a 7 - It's wise to go along with somebody else's agenda now. Set yours aside for a moment and follow the instructions of a person you admire.



Capricorn (Dec. 22-Jan. 19) - Today is a 7 - You should still be in a pretty good mood, even if the pace is fast and furious. You're doing what needs to be done, and that's always satisfying. Fine-tune your routine and accomplish even more.



Aquarius (Jan. 20-Feb. 18) - Today is an 8 - You should be just about up to speed, at least socially. Your studies and even your job are forgotten as interesting friends seek



your attention. Try not to get into trouble for having too much fun.

Pisces (Feb. 19-March 20) - Today is a 6 - Don't get sidetracked by petty quarrels, details or silly fluff. Keep your objectives in mind and continue your studies.



Today's Birthday (April 16). Things keep getting more and more curious for you this year. Instead of finding answers, you're discovering new questions. Frustrating? Sometimes. Fascinating? Always. Your best lessons won't come from books, though you'll read a lot of them. It's what you learn through experience that you'll remember the longest, and it can serve you well.

college special

Large Cheese Pizza

\$5.99

Cannot be combined with any other offer and/or coupon.
Some restrictions apply. Valid at participating locations only.

Ronzio

PIZZA & SUBS

274-3282
35 Smithfield Rd.
N. Providence
Shaw's Plaza

owned and operated by PC Alumni - Class of '87 & '89

GARLIC TWIST BREADSTICKS • WINGS • CALZONES • SALADS • SUBS • SPINACH PIES • & MORE!



EVITA

Music by Andrew Lloyd Webber

Lyrics by Tim Rice

Directed by Bill Wilson

APRIL 18, 19, & 20 at 8:00 p.m.

APRIL 20 & 21 at 2:00 p.m.

General Admission: \$15.00

Senior Citizens: \$12.00 Students: \$10.00

RIC Students: \$5.00 with ID

The Auditorium of Roberts Hall

For Information or Reservations with Credit Card

Call: 401-456-8144

Funded in part by the Rhode Island College Performing and Fine Arts Commission

RHODE ISLAND COLLEGE THEATRE



Arts

And

Entertainment

events-art-
theatre-books-
reviews-music-
movies-cd's-
- and stuff

noise from 20

precedented statement in extreme metal at the time, its strong song writing, finely tuned musical firewinds and uncontrollable lyrical rage finding so many eager ears that it catapulted to #1 on the UK Independent chart. Their debut has gone on to be unequivocally acknowledged as one of the most influential death metal albums ever recorded, a whirling vortex of searing anger and unstoppable energy. 1991's **'Blessed Are The Sick'** cemented MORBID ANGEL's (and songwriter Azagthoth's in particular) reputation as truly innovative and visionary composers, infusing prevalent classical undercurrents within their exceedingly powerful material. 'Blessed...' retained the devastating windstorm of sound that had become their trademark and took it to another dimension. With two already-clas-

sic albums behind them and a relentless global touring schedule, the band had become a force destined for recognition further outside of the growing death metal community.

In 1993, they reached a milestone within that community by becoming the first and only death metal band to be signed to a major label. **'Covenant'** proved that a band as uncompromisingly brutal as MORBID ANGEL could not only release an album within the major label system, but thrive in that world as well. 1995's **'Domination'** further proved that point, with its slime-ridden guitar mastery providing a statement to what the band had become: an ever-expanding organic machine, fueled by an unquenchable thirst for evolution and driven by an unstoppable will.

1997 signaled a major turning point for the band as Steve Tucker joined as bassist and vocalist. His passion, expert musicianship and true death metal vibe helped to make 1998's **'Formu-**

las Fatal To The Flesh' a grand return for MORBID ANGEL and ushered in a new prosperous era for the entire death metal movement. Their exhaustive touring of nearly every continent saw Tucker quickly become an integral part of the band and also proved that, in this day and age, supreme music can still create a supreme response. With **'Formulas...'**, the continued resonance of the first two classics, two major label triumphs that have sold a half million albums worldwide and a heralded live album (**'Entangled In Chaos'**), the masters have set the stage for themselves once again.

In the year 2000, another death metal masterpiece has been given to the world. Emanating strength with its dynamic and sweeping passages, intensely dark melodicism and intricate percussive flair, **'Gateways To Annihilation'** represents all of what was, is and will be - in both death metal and beyond. It is the mirror of the true self. It is the rhythm of existence.

groovy from back

of the Dead, which unleashes all kinds of demons, or deadites if you prefer. It starts off as a legitimate attempt at a horror, but halfway through, it becomes more of a comedy. Ash's hand gets possessed by evil, turns against him and repeatedly tries to kill our hero. To those out there who haven't seen the movie, this scene was the inspiration for the Seth Green movie, *Idle Hands*. This leads to Ash...well, I won't give this away, but the result is beyond strange, but oddly enough, hilarious. Almost the entire second half is just random strangeness that you can't help but laugh at.

Another reason to watch this movie is that it was one of the first films directed by Sam Raimi. He's the creative force behind some cult films, such as *Darkman* and *A Simple Plan*. He has a unique approach to movies and was the pioneer of a technique where you see from the eyes of a monster as he chases a hero (for a clearer explanation, watch *Evil Dead 2* with the commentary on). Raimi also has the honor of being the director of the upcoming *Spiderman* movie, so he will become more mainstream.

If you want a movie that can be both terrifying and hilarious, pick up *Evil Dead 2*. The film is wonderfully ludicrous and the DVD commentary is possibly one of the funniest and insightful film commentaries available. By the time you finish the film, all you will think is...groovy.

evita from 20

Camboia, Ernie Carpenter, Carolyn Cole, Alissa Cordeiro, Michael DiMascolo, W. Auray Doiron, Lauren Dulude, Matthew Furtado, Nicole M. Gemma, Amanda Hartley, Fallon Healy, Erin M. Home, Joe Iozzi, Justin Jutras, James Lamberti, Andrea Mazza, Anthony Mazza, Sanjay Merchant, Jennifer B. Mullen, Laurena Osborne, Elizabeth M. Parrillo, Adam Plante, Lucky Rattan, Alicia Marie Rivera, Arielle Rogers, Joanna C. Scoggins, Tytus Sitnik, Tara Testa, Hannah VanMeter, Kerry Walsh, and Victor Widjaja.

"The cast is excellent: very cooperative, very good and talented," Wilson says proudly. "A lot of people are featured. Most of them are theatre majors. Some are music, some are dance, and there are some people who aren't any of them, anyone

on the campus was eligible.

"I think [the play] is fun to be in," he continues. "Everyone's on stage through the whole show, and when you're not on stage you're getting into costumes. Some actors have seven or eight costume changes. So what's going on offstage is probably as interesting as what's going on on-stage"

Other credits include Tim Robertson as musical director, choreography by Bill Wilson and Joanna Scoggins, Argentine tango choreography by Jeff Allen, Michael DiMascolo as dance captain, and Michael Roderick as assistant director. Music will be performed by Tim Robertson, Jay Atwood, Esther Zabinski, Tom Casale, and Justin Languirand.

For ticket information, call the Box Office at

For more information about the play, check out the official Andrew Lloyd Webber site

student organization?

low on promotion
money?

advertise FREE in:

the anchor

contact Adam @
x.8280

Join STUDENTS OF GERONTOLOGY

Craig-Lee, Fourth Floor Lounge

Wednesdays, 7 pm

Learn about the older population...

Learn about you.

What is Social Security?

Talk about your experiences?

What is Medicare v. Medicaid?

Are you dealing with elder family members?

For more information contact Dr. Filinson (ext. 8732) or Maria Quiray (ext. 8362).

Arts And Entertainment

events-art-
theatre-books-
reviews-music-
movies-cd's-
- and stuff

ON CAMPUS Evita



by Andrew Lloyd Webber
Lyrics by Tim Rice
Directed by Bill Wilson

April 18-29, 8:00PM
April 20-21, 2:00PM

Roberts Hall Auditorium
Reserved Seating \$15

Opening on April 18th and continuing through the weekend, Rhode Island College is proud to present Andrew Lloyd Webber's Tony-award winning play "Evita", brought to life by student actors from all avenues of academics and the Music, Theatre and Dance Department.

"We always wanted to do it, and this year we had the people to do it." "Evita" Director Bill Wilson tells the Anchor. "The students were really excited about it—it's one of the most modern shows we've ever done."

The play, which features a full musical / singing score and minimal moments of unsung dialogue, focuses on the Argentinean legend of Eva Peron, wife of former Argentine dictator, Juan Peron. It tells the story of how the young, ambitious Eva climbed up a ladder of men to become publicly adored as a famous media figure, a symbol for the working class and even a political threat to the army and the aristocracy. The production follows her ascension to near-sainthood in her country, all the way to the nationwide mourning of her death in 1952. Upon its opening in 1978, "Evita" ran for an incredible 1,567 performances, and won seven Tony Awards including best book, best score and best musical of the year.

"I saw Evita when I was in high school," says Wilson. "I thought it was very complicated and confusing, and because of that I always wanted to do it. I wanted to know that I could do something like that."

The cast for "Evita" was selected before-the college spring break and those chosen went home with the music in hand to learn over the vacation. "We spent the first two weeks doing the music", Wilson reveals "It took two weeks to stage Act one, and another two weeks for Act two. Monday of the seventh week we started running it through."

Currently, rehearsals have been running Sunday through Friday, 7pm-10pm -an impressive, if exhausting schedule.

"There are thirty-two people in the cast and a hundred little roles. So the most difficult thing was deciding who would play what" Wilson admits. "It got to the point that if we decided at the beginning that this person should be in this particular role, then the rest of the show had to be a certain way. Deciding who did what was-tricky. We discovered in the process that what we had decided sometimes wasn't going to work, so we had to move people around. Still, the staging was fun - not as complicated as originally thought."

In this Rhode Island College production, Andrea Twiss will be playing the lead role of Eva Peron. Josh Allen is Juan Peron, Eva's husband and dictator of Argentina. Dominique Doiron will portray Che Guevara: the narrator of the play and Eva's conscience. Other performers include: Ali Angelone, Mikayla Beaulieu, Elizabeth

continued on pg. 19

art show RI Office of Higher Education Hosts Student Art Show



John Repczak
"Untitled" Woodcut

The public is invited to attend a fourth offering of student work hosted by the Rhode Island Office of Higher Education k-RIOHE). "Out of the Studio," a free event, will open at RIOHE on Thursday, May 2, from 5:00 - 6:30 p.m. The show features work in a variety of media by students from the Community College of Rhode Island, Rhode Island College, and the University of Rhode Island. The two students with the best artworks from each school will receive gift certificates from local art supply stores.

Three previous shows have been held at RIOHE. The exhibitions have gathered large audiences of faculty~ students, administrators, and higher education board members. Nancy Carriuolo, associate commissioner for academic affairs, plans to continue the shows on a biannual basis

Faculty from all three institutions - Tom Morrissey (CCRI), Paola Ferrario (RIC), and Barbara Pagh (URI) - volunteered their time to work on this project. These Faculty members selected the art and attended to the many details related to the show, working side-by-side with the students in hanging the art.

The artwork will be exhibited from April 19 to October 11, 2002, with viewing and sales 8:30-4:00 on weekdays at RIOHE, located at 301 Promenade St, Providence. Call 222.2088 for more information

DEAN OF THE OLD SCHOOL



By J.D. Salisbury

Remember as a kid, when you watched horror movies and they scared the life out of you, but when you go back and watch them later in life, they seem tame? That happens all too often with myself, so I really enjoy it when a horror has ways of keeping you interested. One such film is 1987's Evil Dead 2: Dead by Dawn.

Some of you are probably wondering why I'm talking about two instead of part one. Well, frankly, it's because when you watch the Evil Dead Trilogy (Evil Dead, Evil Dead 2, and Army of Darkness), part one really doesn't count. This is because two separate companies own the rights, hence the movies needed to be different. That's also the reason why a box set has come out yet. With that out of the way, I'll continue.

The drawing power of this movie can be found in that fact that it does not take itself seriously. Two lovers, Ash (Bruce Campbell) and Linda (Denise Bixler), go to a remote cabin in the woods for a romantic weekend. Problem is a professor has uncovered the Necronomicon, the Book

continued on pg. 19

ON CAMPUS



HONORS EXHIBIT (APRIL 25-MAY 2)

This exhibition presents final projects by students from the Department of Art Senior Honors Program. The show is a component of the College-wide Honors Week and includes photography by Benjamin Adams; ceramics by Jonathan Baylor, John Ferrigno, and Jessica Fontaine; and sculpture by Jessica Mattia and Kelly Senape.

Opening Reception: April 25, 7:00-9:00 p.m.

SENIOR SHOW (MAY 9-18)

This annual juried exhibition highlights the work of seniors graduating from the Bachelor of Arts and Bachelor of Fine Arts programs. The show features works from all areas of the College's growing and dynamic Department of Art, including ceramics, drawing, fiber, graphic design, jewelry design, painting, photography, printmaking, and sculpture.

Opening Reception: May 9, 7:00-9:00 p.m. C O L - LEGE

Hours during Exhibitions:

Monday, Tuesday, Wednesday, and Friday, 11:00 a.m.-5:00 p.m.

Thursday, 12:00 Noon-9:00 p.m. Closed Weekends and Holidays

Accessible to Persons with Disabilities

Gallery Director: Dennis O'Malley, (401) 456-9765, domalley@ric.edu

Web Site: www.ric.edu/bannister

General support provided by the Rhode Island College Department of Art, Art Club,

Artist Co-op, and the Performing and Fine Arts Commission

Local Noise



The following is a brief biography of one of the most influential and innovative death metal bands of all time, Morbid Angel, and can be found at their website, www.morbidangel.com. I was going to write something up myself, but I believe whoever wrote this bio has done a much better job than I possibly could have. Whatever the case, Morbid Angel will be supporting the legendary Motorhead on their upcoming tour, playing at Lupo's Heartbreak Hotel on April 21st, and at the Worcester Palladium on the 26th. I cannot stress enough just how much of an impact this band has had on the extreme music world, and if you have any love for heavy music whatsoever, it would behoove you (pun intended) not to witness these guys live. So, without further ado, here's the bio, and hopefully, I'll see you at Lupo's. - Lord Drake

To see past the secure foundations of convention and into an entirely new state of being demands the strength, conviction and true sense of purpose possessed only by a chosen few. They are the innovators, the leaders, the ones who transcend perceived limitations. In their decade-plus reign as death metal's leading creative force, MORBID ANGEL have consistently succeeded in shattering the musical, spiritual and ideological boundaries of extreme music while unquestionably retaining their core element of brutal and inspirational excellence

...The world was introduced to the furious intensity of the Tampa natives in 1989 with the release of 'Altars Of Madness.' The album was a revolutionary and un-