



The Anchor



Established 1928

Rhode Island College

Tuesday February 21, 1989

RIC hit by statewide flu epidemic



by Johanna Bennett
Anchor Editor

Rhode Island College is in the midst of an epidemic.

A two week outbreak of the flu has kept Rhode Island College's Health Services busy diagnosing symptoms and providing students with non-prescription drugs to combat the flu misery.

Dr. James Scanlan, Director of Health Services at Rhode Island College estimates that the outbreaks began about two weeks ago. Approximately five to six students, both dorm and commuter students, report to Health Services for diagnosis and relief daily.

As of Tuesday, February 14, Scanlan claimed that there was no indication

that flu outbreaks on campus were dying down.

College campuses throughout Rhode Island have been hit hard by what appears to be a statewide flu epidemic.

Providence College and University of Rhode Island spokespersons reported that outbreaks on their campuses began around the second week of the new semester.

Though authorities are tentative about exact numbers, it can be estimated that to date over 350 Rhode Island College, Providence College, and University of Rhode Island students have reported to campus clinics for treatment of "flu like symptoms."

In all cases the symptoms described by ill students varied, though generally, students' complaints include some combination of head ache, congestion, coughing, nausea, aching body, fever, sore throat and vomiting.

Providence College and University of Rhode Island all claimed that the outbreak had almost run its course. However, it was estimated that in the course of the outbreak Providence College's and URI's infirmaries had seen approximately 108 and 200 students respectively.

Student Government moves to settle RICPIRG dispute



Head of RIPIRG John Tabella appears before Parliament
-- photo by Victor Andino

by Victor Andino
Anchor Editor

The year-long conflict between Student Community Government and RICPIRG (RIC chapter of the Rhode Island Public Interest Research Group) may soon be resolved.

Allegations were raised last year by a former member of RICPIRG who approached Parliament and suggested that they look into 'suspicious' there.

Parliament immediately froze the RICPIRG budget and conducted an audit of their account. The audit discovered that \$84.75 had been deposited into

RIPIRG's account, instead of RICPIRG (RIPIRG is the mother branch of Rhode Island PIRG organizations.)

Finance Committee members admitted they did not consider the misdeposited money to be a serious infraction. But the long wait for reaction by RICPIRG members signaled to some at Parliament that no one cared what happened to the group.

Members of Parliament approved a proposal at the Feb. 15 meeting that gave the organization two weeks to show on campus student support. RICPIRG must have at least four members to make up and executive board on campus by March 1, the next Parliament meeting. If this is accomplished, funds frozen from last Spring would be released. Further funds would be returned based on the group's progress.

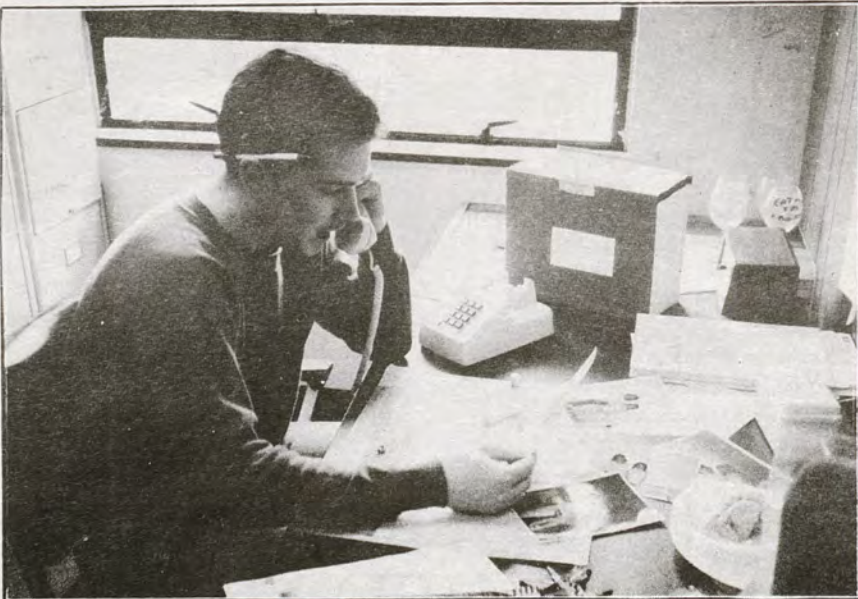
RIPIRG Executive Director John Tabella came before Student Government to put to rest questions of financial mismanagement. He scoffed at suggestion that money raised November 1987 for Oxfam America and McAuley House was put into a "high interest bearing account". The total RICPIRG raised at the fundraiser was \$84.75. He also denied that an additional \$400 was raised but never reported.

"The only thing that really concerned me was the lateness of (RICPIRG) coming before us," said Parliament President Ed Soares. "We've been waiting so long for something to come back."

"Our presence at Rhode Island College diminished immediately because we did not have funds to be at Rhode Island College," responded Tabella. "In terms of the lateness of our response, we were under the impression that there was an ongoing investigation and that the onus was really on the student government to research it, and I had been in contact with the office here. But RIPIRG as an organization had to move on, we had to get on with our business. We have an organization to run and if the Rhode

See RICPIRG page 2

Student steps in to save 1989 Yearbook



Yearbook Editor-in-Chief Phil Coutu

-- photo by Johanna Bennett

by Johanna Bennett
Anchor Editor

"I don't want to make it sound totally desperate because it isn't."

So says Phil Coutu, the new editor-in-chief, for the 1989 Rhode Island College yearbook, but he admitted that he stills needs help and

has had trouble recruiting a staff.

To date, news regarding the progress and situation concerning the yearbook organization has been bleak. Lack of staff and permanent leadership has put production of the 1989 publication way behind schedule.

Last semester, seniors were seriously concerned over the

possibility of not having a yearbook.

The situation reversed itself, to some degree, when Coutu took over as editor-in-chief in January.

Motivation behind Coutu's decision included gaining professional experience and "Besides," Coutu said, "I wanted a yearbook."

Coutu will graduate January 1990.

As of now, the majority of work that needs to be accomplished is organizational in character. Senior portraits need taking. Ads need selling. Photos need developing. A staff needs to be recruited.

Coutu claimed that he has had "a hell of a time" getting people interested in participating. He claimed that offers of help repeatedly come in but few actually follow through.

"It says to me that a lot of people aren't interested," says Coutu.

Presently, the yearbook staff include Photography Editor Andre Brown and eight photographers. Copy writers and production assistants are urgently needed.

Still, the 1989 yearbook is in relatively good shape. Coutu claimed the book has been roughly planned out and will include about 180 pages. A second senior portrait sitting is scheduled for this week.

Publication is slated for August or September of 1989.

Inside...

WXIN begins "escort service"...	2
Student fights drugs on campus...	2
What's Happening...	6
Editorial...	9

Just when you thought it was safe...

by Johanna Bennett
Anchor Editor

Late at night a female dorm student steps out of the library front entrance.

From the library on-campus phone she had dialed X8787.

About five minutes later, a male WXIN staff member appears, carrying with him an official WXIN escort service walkie-talkie. They walk down the library front steps and he escorts her back to her dorm.

This semester, such a sight will become a more and more frequent occurrence on campus.

From 7:00 p.m. until 11:00 p.m. members of the WXIN staff are on call as part of an on-campus escort service.

According to Bill George, General Manager for WXIN, all male staff members are required to take shifts. Calls for escorts are made to the station, and the escort is dispatched. All escorts carry official "WXIN Escort Service" walkie-talkies with an ID card taped on as proof of identity. If any trouble should arise, according to George, then the escort calls into the station and "Security is just a phone call away."

The service, which is conducted in conjunction with Rhode Island College Security is not a new idea. WXIN had a similar service once before, but it was stopped in 1985.

According to George, restarting the



Bill George, WXIN general manager, (left) shows Kevin Costa how to use the official escort service walkie-talkie.

-- photo by Johanna Bennett

escort service was something they had wanted for some time. The idea finally started rolling as a result of a conversation between George and Richard Comerford, Director of Security and Safety, last semester.

According to George, Comerford had heard that WXIN might consider starting up the service again. Both agreed that it was a good idea -- especially in the wake of events at Providence College, Brown University, and here on-campus that occurred at the

same time.

The WXIN escort service officially restarted three weeks ago. A few calls have already been made. George claimed that there have been a few "stagnant" nights. On a busy night, he estimates about six to ten calls.

"I think that as girls get more aware and once the weather gets warmer, there will be a bigger need for it [the escort service]," George said.

Student hopes to bring "Campus Without Drugs" to R.I. College

by Johanna Bennett
Anchor Editor

Greg Anderson wants to see a campus without drugs.

With a little bit of luck and the formal blessing of the Rhode Island College Student Parliament, he just might get his way.

Anderson is in the process of organizing a Rhode Island College branch of the national student organization known as "Campus without Drugs".

Though its fundamental purpose would be a college aged peer support group, the organization would also sponsor state wide high school assemblies promoting a substance free theme.

To date, Anderson claims to have a potential membership of seven to ten

people lined up "...from just word of mouth."

Anderson's work concerning the "drug free" theme began long before he arrived at Rhode Island College. In high school he had been involved in "Youth to Youth" -- the high school affiliate to "Campus without Drugs". By attending state and national conferences, he began to "understand the thing behind it."

The inspiration for starting a Rhode Island College branch of "Campus without Drugs" came from attending one such conference last summer. Here he talked with other "Youth to Youth" members about a circuit assembly program geared towards providing older role models for kids.

"Most high school kids have a negative image of what college life is

all about, it would give them the idea that that (drugs and drinking) is not what it is all about," said Anderson.

Additionally, Anderson hopes to use "Campus without Drugs" to provide peer support and activities for students on campus.

Though "Campus without Drugs" has a more lenient alcohol policy than its high school counterpart (drinking by individuals over the age of 21 is acceptable), Anderson professes to neither drink, take drugs or smoke. This combined with his position as starting heavyweight on the Rhode Island College wrestling team makes him the type of older role model "Campus without Drugs" and "Youth to Youth" strives for.

"They (high school students and peers) pick me out immediately," Anderson said.

If everything goes as planned "Campus without Drugs" could be on campus within a month. Any student is free to join the organization. However, Anderson does have one stipulation.

Any student wishing to go on the assembly circuit must commit himself to a substance free existence.

"I'll trust anyone until they give me a reason not to," Anderson said.

The Anchor

Established 1928

Editors:

Executive: Sarah Frechette

News: Johanna Bennett

Production: Sandy Rua

Sports: Scott Lesiuk

Graphics: David Lineberger

Copy: Victor Andino

Arts & Entertainment: Lisa Carvalho

Advertising: Erik Volk

Managing: Janine Landry

Business: Bob Carney

Photography: Nicole DaCosta

Public Relations:

Manager: Delma Ramos

Staff Photographers:

Victor Andino, Philip Coutu

Janine Landry

Staff Writers:

Lori Almeida, Ron Beaudoin

Kirstin Collins, Nicole DaCosta

Richard A. Daigle, Chris Fagan

John Goeghegan, David T. Gordon

Jeanne Gunst, Scott Lesiuk

Stacey Levett, Robyn Luther

Lynda A. Michael, Melissa Moran

Fred Nelson, Doug Olney

Beth Raffa, Paula Ranucci

Elizabeth Tokarz, Cyndi Vates

William Volpe

Graphics Staff:

Perry Morse

Production Assistant:

Donna Theroux

Advertising Assistant:

Nancy Hoffman

Photo Assistant:

Dewin Garnsey

Faculty Advisor:

Dr. M. Cabbage

Coach

Barbara Polichetti

The Anchor is located on the third floor of the Student Union, Rm. 308. The mailing address is: Anchor, SU 308, RI College, 600 Mt Pleasant Ave, Prov. R.I., 02908. Phone 456-8280.

Editorial decisions for The Anchor are made by majority vote of its student editorial board. No form of censorship will be imposed; however, any material found to be unsuitable or unacceptable in the board's opinion will not be published.

RICPIRG

continued from page 1

Island College student organization decides to freeze our funds, we had to just hope for the best."

Later, Tabella said that he was satisfied with the proposal and would see no problem with meeting the requirements within two weeks. "We're very satisfied by the Student Parliament's recognition that there was only a minor mistake in the accounting and no money was misused," Tabella said. "We hope that when Student Government meets again RICPIRG will be reactivated." He added that he was anxious to put the affair behind the organization.

Soares was also pleased with the meeting's outcome, but said that he wished things had been cleared up back in April 1987.

Sentimental Journey

WINTER CLEARANCE SALE

WED. 11-4 THURS-SAT 11-5 (or later)
SUNDAY - TUESDAY BY CHANCE

1261 Chalkstone Ave. 421-6005
PROVIDENCE



The Campus Store

Rhode Island College Student Union

Sweatshirts - Sweatpants - T-shirts
and much more!

**20% off all
"Rhode Island"
Imprinted Clothing***

Valid only with this coupon.
Offer expires 2/27/89

*Does Not Include Rhode Island College Imprinted Clothing

ATTENTION NURSING MAJORS

Applications For Nursing Program
Available in FLS145

**Deadline for Submission:
March 20, 1989**

Oasis for older students

by Richard Meiklejohn
Anchor Staff Writer

How do older night students become more involved in campus life?

According to Marsha Healy Cohan, Director of the Women's Center and founder of Slightly Older Students (SOS), older than average students make up about one third of the student population. It was considered a sad situation when it was discovered that older night students had no place to drop in and feel a part of college life.

According to Sue Hamilton, co-founder of SOS, "I saw the need for a place for the older night students to get together and meet and share experiences when I saw women students eating alone at night in their cars."

The organization formed last year amidst cheers from the older night student population.

Program co-ordinator Penny Shore considers the organization a contact point between other older night students and the college.

Even with the cheers, the organization does meet with certain drawbacks.

The location of the organization in the Woman's Center gives the organization the impression of being female orientated. Additionally, Shore feels that the college has not yet made a full commitment to providing services for its older students and some professors refuse to read notices concerning the organization in class.

Browne Hall enhances accessibility to disabled

by Steven White
Anchor Staff Writer

Rhode Island College has seen a flurry of recent maintenance work aimed at enhancing the college's accessibility to the disabled.

The renovations, funded by a state program, has culminated in the most recent renovations to Browne Hall dormitory.

Denise Edwards, Director of Browne Hall, stated that though there are no severely disabled students presently living at the dormitory, the new renovations will allow physically

impaired individuals to visit dorm dwellers.

According to Frank Montanaro, Rhode Island College Facilities Project Coordinator, the renovations include ramps at the entrance, modification of the dormitory's bathrooms and the enlarging of doors for easy access.

"Browne Hall is just the tip of the iceberg," claimed Montanaro. Other renovations include the addition of an elevator to Gaige Hall, a chairlift to Horace Mann, ramps to Craig-Lee, and modified bathrooms in Gaige Hall and Adams Library.

Wrestlers stomp Coast Guard Academy

by Scott Lesiuk
Anchor Editor

Rhode Island College blew by the Coast Guard Academy, grabbing an impressive 31 to 14 victory during their Tuesday, February 14 match.

The Anchormen were led in their effort by Scott Martin's 15-8 victory and Brian Allen's pin.

Three days earlier, the grapplers had scored an equally impressive victory in a tri-match with Amherst and Curry Colleges.

RIC drops one to Eastern Connecticut

by Scott Lesiuk
Anchor Editor

Eastern Connecticut State dominated the Anchorwomen from the tap, defeating the women's basketball team, 57-43 on Feb. 11 at Willantic.

One bright spot for the Anchorwomen was the play of Doreen Grasso who lead the team with 13 points.

The disappointing loss drops the Anchorwomen's record to 11-13.

Parliament fills some vacancies, 31 still open

by Donna Wojdak
Anchor Staff Writer

Student Parliament filled its two Executive Board vacancies but thirteen seats still remain open.

Lori Serafino won the Vice President seat over David Guertin, II votes to 4. Michael Conley was elected Speaker of Parliament and Hilda Leandro was elected Deputy Speaker. Both ran unopposed.

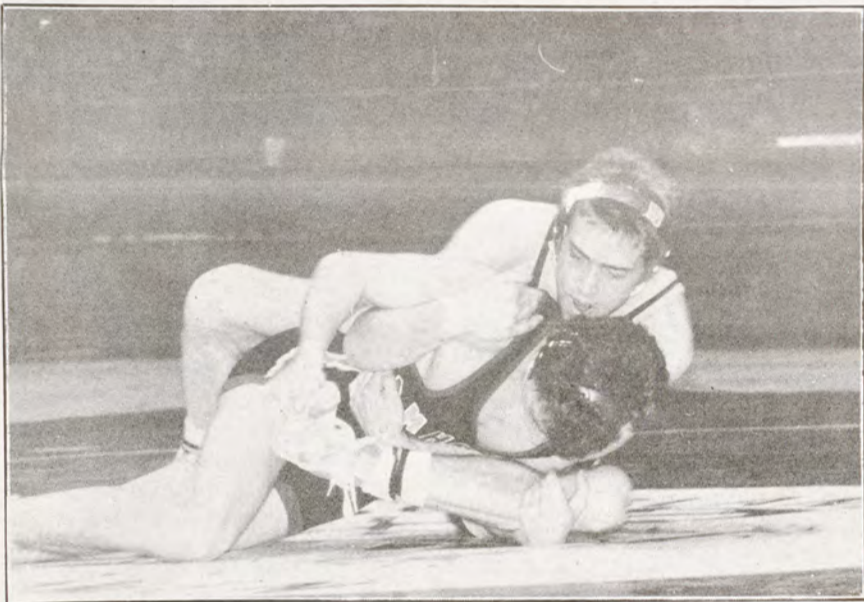
Student Community Government also filled a vacant secretarial position. Charlene Waterman was hired as Clerk Stenographer.

The remaining 13 openings include

the constituencies of Humanities, Math, Physical Science, Social Science, Representative at Large, Graduate Studies, and Performance Based Admissions.

According to Ed Soares, President of Parliament, getting involved is surprisingly easy. Contact the Parliament office to inquire about any available seats. Winning a seat requires obtaining a designated amount of signatures on a petition from the constituency you wish to represent.

Meetings are held every other Wednesday at 7 p.m. in the Student Union.



Brian Allen brings an Amherst wrestler down

-- photo by Nicole DaCosta



Mickey's Pizza & Restaurant

PIZZA • SUBS • PASTA • FISH & CHIPS
CLAM CAKES • HOT DISHES • HOT WEINERS

Free Delivery to RIC

RIC SPECIAL!
5 Cokes Free with purchase of any large pizza
Valid only with this ad

18 Pocasset Ave, Providence
(Olneyville)

943-6560

STUDENT LOANS

Our **UEL** loan fills the gaps with up to \$80,000.

Our UEL Loan fills in the gaps between traditional student loans and college costs. It lets you borrow up to \$20,000 a year - \$80,000 total - with an option of interest-only payments while the student is in school.

And the UEL loan is based on your ability to

pay it back, not on the needs analysis used by colleges. So chances are, it's an option you haven't even considered.

To find out more about the UEL Loan, or other options available through Fleet's FOCUS package, return this coupon. Or call 1-800-325-5576.

Stay out in front
with Fleet

Send me more on: The Universal Education Loan
 Other Education Financing Options

Name _____
Address _____
City/State/Zip _____
Phone Number _____
College/Date of Graduation _____

MAIL TO: Fleet National Bank Educational Financing Department
P.O. Box 486 Providence, RI 02901-9972

RIC

Inquiring Photographer

What do you think of the college's new advertising campaign?

Photos by Johanna Bennett



I think it turns you off in a way -- seeing a gerbil on a treadmill
-- Joe Carlson



It gets the point across pretty well
-- Jim Dandeneau



Hopefully it will help people change their minds about our school
-- Ed Soares



It's a way for the college's management force to meet the decline in student enrollment
-- Bryan Nichols



It's so hard to get into some of the classes. If they are going to advertise for people, they should make registration easier
-- Joe Sugru



It's definitely a move in a positive direction
-- Sue Prior



I didn't know we had one
-- Michael Yeomans

Words with a Southern Siren

An interview with Divinyls' Christina Amphlett



Christine Amphlett of the Divinyls reveals her *Tempermental* side
-- Anchor photo

by Wendi Borges
Special to the Anchor

1988 was a profitable year for Australian rock and roll bands. In years past, if two acts from that end of the globe broke into the American music charts, it was a major plus. Nowadays, it's not so unfamiliar. Things really are looking up for the music industry down under.

In the last year alone, more than a half dozen aussie rock bands became internationally known through records and major headlining tours. With the popularity of INXS, Midnight Oil, The

Church, The Saints, and even the offbeat Hunters and Collectors, it's surprising that an act as diverse and talented as the Divinyls hasn't reached this same plateau of success.

The Divinyls were one of a handful of bands from Oz that helped influence the growth of Australian rock during the '80s. The band formed in 1981. The core of the band features Christina Amphlett on vocals and Mark McEntree on lead guitar. *Monkey Grip*, the Divinyls Australian debut album and its followup, *Desperate*,

never hit big on American radio. In 1985, the band released *What a Life!* (Chrysalis), an album that was best known for its blockbuster hit "Pleasure and Pain."

The album introduced us to Amphlett's unique style of singing (a mix ranging from hiccups to tense raspy dynamics). Critics dubbed her a modern '80s "angry young man" because of the realistic stories she portrayed in the lyrics ("Dear Diary"). Some found similarities in Amphlett's style to that Lena Lovitch's Heck, Amphlett even established a dress code for herself. Onstage, she was frequently seen sporting a catholic school-girl uniform (a gutsy image for a petite lead singer). An extensive tour of the U.S. followed. The band performed on both coasts, capping it off with an appearance on MTV's *Annual Rock and Roll New Year's Eve Ball*. Things were looking good for the Divinyls. Christina Amphlett seemed to think so, until the band returned home to Australia in 1986.

During a two week promotional tour last summer, Amphlett said the band took a sharp turn backward after the *What a Life!* tour. Band members dropping out, management, and the tension of trying to maintain their top image after the success of the album all led to a string of difficulties. Amphlett summed up everything this way: "We had been touring," she said. "One of the band members got sick. The other guitar player wanted to have his own band. So virtually, we had to put everything back together again. It's

just Mark and I (now), the original founding members."

Putting everything back together again meant rebuilding the band and finding new management. This occupied the remainder of 1986 and part of 1987. During the dry spell, both McEntree and Amphlett managed to stay active musically. Amphlett did some screen acting and simultaneously wrote songs for the next album. In January 1987, her and McEntree revamped the Divinyls for the *Australian Made* tour, a two week outdoor stadium rock show that touched down in eight locations in their homeland.

Together with INXS, Jimmy Barnes, The Saints, and Mental as Anything (to name just a few), Amphlett said the experience of joining the rock and roll caravan was very self-rewarding. "It was a lot of fun," she recalled, "it was kind of a real coming of age of the Australian industry, (that) they could put on a mammoth thing like that."

After *Australian Made*, the two headed for Sunset Studios in L.A. where they met up with producer Mike Chapman to begin production on the next album. For six weeks, the trio and some added studio musicians belted out the 10 tracks for the album *Tempermental*. Looking back at the project, Amphlett said for once, she was with the finished tracks and her own performance in the studio. She said Chapman had a lot to do with her

See Divinyls page 8

Edwin Drood: A real RIC whodunnit

by Paula Ranucci
Anchor Staff Writer

English accent. The actors not only performed their character from the Dickens novel, but they also subtly managed to remind the audience that the play was being performed at a bawdy, 19 century theatre--while the actors at these theatres were commonly thieves, prostitutes, and other low-lives.

Rhode Island College had the opportunity to solve a mystery January 31 in Roberts auditorium.

Drood is the bawdy musical whodunnit, based on an unfinished novel, *Drood*, written by Charles Dickens. Because of Dickens' death, the novel has no final chapter. What the play attempts to do is give the audience the chance to pick the murderer out of six suspects. When the murderer is chosen the characters play out the chosen finish.

The play is set in the Music Hall Royal in London, at the turn of the century. The theatre is presenting its premiere performance of "The Mystery of Edwin Drood." To make the audience familiar with the suspects, the characters introduced themselves to the audience before the play began. They told their name and the motives their character might possess to commit murder. The audience then watches the play and decides on who the killer is.

Performed by URI Theatre for the American College, the whole play was performed with an air of professionalism, not usually found in college theatre productions. The singing and dancing were spectacular, and the comedy was non-stop. Through all that, the actors had to maintain an

Two performers who stood out during this performance were William Cartwright (David Wagner, who was also the mayor) and Edwin Drood (Lisa M. Morse, who was also Alice Nutting). Wagner not only narrated the whole play using a cockney dialect, but he also managed to switch to an English drawl and still keep both accents believable. Morse also did an outstanding job.

The play is a participant of the American College Theatre Festival. The aim of this festival is to identify and promote quality in college level productions by offering seven productions the opportunity to perform at the John F. Kennedy Center For the Performing Arts. ACTF also awards scholarships and grants to actors, playwrights, designers, and critics. This play has already received an award for best costume and makeup--the costumes were designed by Joy Spanabel Emery.

If the quality of this performance is maintained, URI Theatre is sure to win many more awards.



Die Hard- Bruce Willis visits his wife at her company Christmas party, hoping for some nice-nice. Come to find out, the party also has some uninvited guests, namely Alexander Gudinov and friends.

A Fish Called Wanda- Now here's a flick for devoted Python fans. It stars Michael Palin and John Cleese (Python people), Jamie Lee Curtis, and Kevin Kline, all about a big heist followed by classic Python mayhem. This video is definitely an excuse to go out and buy a VCR if you don't have one.

Bull Durham- Susan Sarandon and Kevin Costner star in this amusing film about a woman who is fascinated by baseball players. Costner becomes her latest interest, but she finds that he won't be easily seduced. Costner is great as the sports has-been who takes a young rookie under his wing. Things really get interesting when Sarandon gives the rookie some tips of her own. One of my favorite lines is when Costner says that he likes "soft wet kisses that last for three days". (Aahh, sigh!) Catch this vid or you'll be stuck out in left field.

The Dead Pool- Well, Dirty Harry Callahan (Clint Eastwood) is back for another exciting adventure, and this time he really goes crazy. Someone is playing a game, killing off people who join the "Dead Pool," and Harry's on their list. Since Harry's in town, go rent your copy right away, or you won't make his day.

Nightmare On Elm Street 4- Robert Englund returns as "Prune Face," better known as Freddy Kreuger, and he wreaks his usual havoc in the dreams of as many teens as he can to continue this "Friday the 13th clone," as if you're not getting enough of Englund in his new *Freddy's Nightmares* television series. Well, sweet dreams, people.

Send out a million copies of this letter ...or else!

by Janine Landry
Anchor Editor

Have you ever received a letter like this?

Dear Reptilian-Spit-for-Brains,

Send a million copies of this letter to other non-suspecting snake saliva cretins like yourself within the next 96 hours. If you don't, you face the following cataclysmic events:

- (1) *No hot water in your shower ever again.*
- (2) *A credit rating so terrible, even the library won't loan you a book.*
- (3) *Being in the path of a stampede of moose who have just been subjected to listening to a Jim and Tammy album, an unfortunate accident which leaves you with a multitude of internal injuries.*
- (4) *Death.*
- (5) *Certain death.*
- (6) *Very certain death.*

If you send copies out, then you will win lots of money in the lottery or get tatoos in your next box of Cracker Jacks. Either way, you'll live happily ever after.

DO NOT IGNORE THIS!
Remember, only you can prevent moose stampedes.

Such was the tone of the letter I received. I should have known by the missing return address and generic handwriting on the envelope that inside was that horrid phenomenon of twisted mental torture - THE CHAIN LETTER.

Do I send out copies? What if I don't and something terrible happens to me? Oh, what's a semi-sane, rational thinking girl to do?!

Someone, somewhere was definitely out to get me. Friends don't send friends chain letters. No, the person who sends you a chain letter hopes you will be one of the 250 Americans to be struck by lightning this year. The person who sends you a chain letter is the kind of person who takes secret pleasure in knowing your dad backed over your dog with the Volare in the driveway.

The letter I received mentioned the fates of the unlucky souls who broke the chain. Poor Dalan Fairchild died nine days after throwing the letter away. An office worker lost the letter and then subsequently lost his job. (But then he found it again and this time, he sent copies out. Oh and wouldn't you know it, he got a better job!) A woman in California put aside her letter with plans to attend to it later. She forgot all about it; her car broke down. Oh, the cruelties of fate!

Well, you know what? I think chain letters were started by the U.S. Postal Service and not some South American monk. Yeah, I just bet the letter has been around the world nine times. Ha!

I broke the chain. It's been over a month since I received the dreaded letter, and I'm just fine. My job's fine, my car's fine, and I'm still alive and well. So there! I'm not afraid of a stupid chain letter! Only a fool would send out copies of a chain letter! Right?

By the way, you haven't seen any moose around here lately, have you?

Quit smoking.

WE'RE FIGHTING FOR
YOUR LIFE

American Heart
Association 



THE SIGN OF GOOD CENTS

Where else but UPS could you earn:

- \$8-9/hour to start
- steady part time 3 to 5 hour shifts to fit your school schedule
- full time benefits for part time work
- chance for advancement for men and women alike
- get paid to get into shape
- no experience needed
- and more!

UPS makes good cents. United Parcel Service has facilities in Norwood, Brockton, Watertown, Dartmouth, Dennis, Sagamore and Warwick, RI. Call (617) 762-9911 for more information on the location nearest you.

UNITED PARCEL SERVICE
...for Unlimited PotentialS
Always an Equal Opportunity Employer



YOU QUALIFY FOR INSTANT CREDIT!

Start making credit purchases IMMEDIATELY! We will send you a Members Credit Card at once with NO CREDIT CHECK. Buy any Jewelry, Clothing, Sporting Goods, Watches, Electronics & MORE! All with installment payments out of our "Giant 100+ Pages Catalog." Take 12 months to repay. Your personal credit card is a -second I.D.- valuable for check cashing, etc. plus your Students Credit Group A-1 reference will be on file to help you obtain other credit cards. So send in your \$5 catalog deposit now. (refundable with your first order)

Establish your credit Today!

100% Satisfaction Guaranteed (or your Money Back)

Name _____

Address _____ City _____

State _____ Zip _____

MEMBERS P.O. BOX 4649
Students FORT LAUDERDALE, FL
CREDIT GROUP FLORIDA 33338

Rhode Island College Dance Company 30th Annual Spring Concert Series



Photo R.M. Grabbert c. 1985

March 2-4, 1989
8:00 p.m.
Roberts Auditorium,
Rhode Island
College

**30th Anniversary
Season!
1958-59 to 1988-89**

Tickets:

- \$5.00 General Admission
- \$3.00 Seniors, Groups, Students, RIC Faculty & Staff
- \$2.00 Students with RIC ID

For Information (401) 456-9791

What's Happening



Tuesday 21

"Sweet Georgia Brown"-- The Harlem Globetrotters at the Providence Civic Center today only at 7:30 p.m. Tix are \$13, 11, and 9. Group discounts are available.

Wednesday 22

AIIESEC (The International Association of Students in Economics and Business Management) is having a meeting to get new members at 12 p.m. in Alger 206. Refreshments will

be served.

The Noontime Series from RIC Programming presents John Fuzek, a folk guitarist of the new generation in Donovan.

"How to Apply Successfully to Graduate Schools" will be presented at 1 p.m. in CL 153. Dr. Tom Pustell and a panel from the deans' offices and Financial Aid will be there to answer questions.

Get cultural! Inatio Martin Baro, Central American-Caribbean coordinator of the Network for Communication and Scientific Documentation in Mental Health and Human Rights will lecture on "Psychology and the Sociopolitical Dilemmas in El Salvador" at 2 p.m. in Gaige Auditorium. Reception will follow at 3:30 p.m. in Gaige 207.

Get even more cultural! Tonight is Nina Wiener Dancers at Roberts Hall, 8 p.m. Tix are \$12, with student and senior discounts available. For info call 8294.

Thursday 23

At the Last Call tonight--a record release party! Kimo Sabe's releasing their record tonight, so join the band and lots of other strange people in having a party.

This whole weekend will present Mariage Blanc at Leeds Theatre with Brown University. Tix are \$5 for students, call 863-2838 for more info. Be advised, there's nudity in this play!

Friday 24

At RISD, Professor James Trilling lectures on "Looking at Late Roman Textiles", 12:15 p.m., Museum of Art. Bring your lunch.

Paradise at RISD--The Museum of Art's main gallery is transformed into a tropical paradise, including Calypso music and palm trees, in this fundraiser to benefit the Annual Giving Campaign. But it'll cost you \$50 to get in. Call 331-3511, ext. 110 for reservations.

Check out the Lamborghini! Custom Car show is at the Providence Civic Center. Tickets are \$7.



If you feel like driving, go the University of Connecticut and see Bim Skala Bim, 6 Feet Under, and Ken Cormier all at the SU Ballroom. Tix are \$5.

Sunday 26

At noon play BINGO! RIC Programming presents Super Prize

Bingo, with prizes including programming event tickets as well as pizzas and sweatshirts.

Give up smoking! join the Freedom from Smoking Clinic, from 7-9 p.m. at the Student Union, room 305.

If that's not your bag, then go to a lecture/slide show with Wallace Terry from 7-10 p.m., Gaige Auditorium, to commemorate Black History Month.

You could also go to a ballet: Two soloists from the Bolshoi and Kiev Ballet along with the Los Angeles Ballet will have a presentation at 7:30 p.m. at the Providence Performing Arts Center. Tickets are \$15.50, 19.50, 21.50, and 22.50. Call 421-ARTS for info.

There'll also be a slide show featuring Watercolor Techniques by Sally Caswell at 2 p.m. It's free, at the Slater Memorial Park Watercolor Society Gallery.

Horizons for Youth will be hosting its 19th annual "Salute to the Boston Bruins." Advance reservations are necessary at \$55, \$500 for a table of ten (ouch!). Call (617) 828-7550 for more info.

RISD has poets Tina Letcher and Indu Suryanarayan read original works in the Museum of Art, 3 p.m.



**Let Us Know What's
On Your Mind...
Whatever It Is.**

Since September of this year, The Anchor Line has provided students with a forum to express their opinions on various subjects. We are your student voice... so let us hear you.

The Anchor Line is completely anonymous. Your call will be recorded and your comments printed in the very next edition of The Anchor.

The Anchor Line
456-8544

FOCUS

"GETTING AN 'A' ON YOUR CLASS PRESENTATION"

with Charlie Allsworth

Wednesday, February 22nd
12:30 - 1:30 pm in SU 305

LIP SYNC CONTEST

Friday, February 24th
7:00 pm in the SU Ballroom

1st prize \$100.00
2nd prize \$50.00
3rd prize \$25.00

Sign up in SU 314. Sponsored by the Class of '89 and the Campus Center.

THE NOONTIME SERIES

presents
JOHN FUZEK

Wednesday, February 22nd
11:30 am in Donovan Dining Center

FREE! lunchtime entertainment

NEW MUSIC NITE

with
THIRPLY SLICED

...original progressive music...

Tuesday, February 21st
9:30 pm in the Coffeeground
FREE!

Campus Center

BUS TRIP TO PORTLAND AND FREEPORT, MAINE

Leave RIC at 9:00am Saturday, March 4th
Return to RIC at 6:00pm Sunday, March 5th

\$40.00 per person

Student tickets go on sale February 20th
College community tickets go on sale February 27th

For more information call 456-8034.
Sponsored by RIC programming and the Campus Center.

MENU FOR THE WEEK

TUESDAY	WEDNESDAY	THURSDAY	FRIDAY	SATURDAY	SUNDAY
Breakfast: Egg Mcmuffin Waffles	Breakfast: Blueberry Pancakes Sausage	Breakfast: Croissant Sandwich French Toast	Breakfast: Cheese Omelette Ham	Brunch: Sausage French Toast	Brunch: Blueberry Pancakes Stuffed Shells Meatballs and Sausage Roast Beef
Lunch: Chili con Carne Hot Subs Grilled Ham and Cheese	Lunch: Fried Clams Baked Lasagna RIC Chicken	Lunch: Eggplant Parmesan Hot Subs Franks and Beans	Lunch: Baked Fish Pizza Stuffed Quahogs	Dinner: Meatloaf BBQ Pork	Dinner: Baked Ham Franks on a Roll
Dinner: Roast Pork Pizza Hamburgers w/bacon	Dinner: Baked Chicken Creole Shrimp Grilled Cheese	Dinner: Beef Stroganoff Buttered Noodles Veal Cutlet Sandwich	Dinner: Chicken Nuggets Fish and Chips Taco Bar		

PRESENTED BY

COMEDY CAFE

Every Monday Night
In The Coffeeground

Hosted by Ed DelGrande
featuring three Boston Comedians
from 8:00 pm 'til the laughs stop!

Free!

Sponsored by "Sounds From the Ground"

THE BANGLES

Tuesday, March 21, 1989

Rhode Island College
Walsh Gym

8:00 p.m. \$ 11.00 with RIC ID
\$ 16.00 general admission

TOP 10 HITS INCLUDE:
"IN YOUR ROOM"
"WALK LIKE AN EGYPTIAN"
"MANIC MONDAY"
"HAZY SHADE OF WINTER"

TICKETS ON SALE NOW AT THE SU INFO CENTER

NOONTIME SERIES AND SUNDAY BRUNCH TUNES

Every Wednesday and Sunday in Donovan

Featuring Various Local Artists

Admission is FREE!

Noontime Series Schedule: 11:30 am - 1:00 pm

February 22 John Fuzek, a folk guitarist of the new generation

Sunday Brunch Schedule: 11:45 am - 12:45 pm

February 26 Super Prize Bingo, great giveaways including programming event tix, pizzas and sweatshirts

Presented By Sounds From the Ground (A Tiny Little Division of Programming)

Europe on 84¢ a day

Lecture and Slide Show
March 29, 1989
7pm - 8:30 pm
SU Ballroom
FREE!

Gil White "Europe on 84 cents a day"
28 ways of getting free transportation,
16 ways of getting free accommodations and food,
sponsored by RIC Programming, New Student Programs, Residential Life and Housing and International Student Exchange

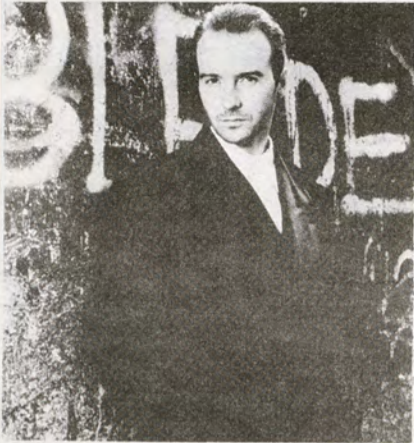
New Music Nite

Every Tuesday in the Coffeeground
Featuring the Finest in New Music from Reggae to Rap, Metal to Progressive...
You'll hear it here first.
It's at 9:00 p.m. and it's Free!

RIC PROGRAMMING

Questioning the Answers

by Ron Beaudoin
Anchor Staff Writer



Midge Ure

Midge Ure
Answers to Nothing
Chrysalis Records

In our logical world, we are always searching for answers. Even though the truth may be lies - we accept it. On the title track of his second solo LP, Midge Ure points out false prophets who fill us with their lives. "Cause the answers given were Answers to Nothing"

The album raises many questions. Ure doesn't try to give answers or explain things, he is clearly looking for the answers himself. "If I could understand why one land throws aside what others need to survive, then

maybe I could justify what I am seeing." (from "Hell to Heaven")

The first single "Dear God" is a prayer set to music. Midge pleads for love, hope and peace. He also points out world problems in a subtle way: "Dear God, can you hear me crying? A whole world crying...We had it all and we threw it away. Is there somebody watching over the mess that we've made. We're lost and alone and afraid."

Throughout the album, Midge Ure is joined by several guest musicians. Most notably, bassist Mark King (Level 42) and drummer Mark Brzezicki (Big Country). The lovely Kate Bush joins Midge on "Sister and Brother", which is a song that makes a definite statement on the topic of sexual equality. Usually duets are lame and

weak, but this song rises with utter power.

Besides the songs already mentioned, Answers to Nothing has more. From the innocence of love in "Take Me Home" to the futility of war in "Remembrance Day". "Lied" is a song reminiscent of Ure's former band Ultravox. similarities are evident in the music as well as Ure's voice inflections.

On Answers to Nothing, Midge Ure isn't giving answers, he's raising questions to raise our conscience. As he did as co-author of the Band Aid single "Do They Know It's Christmas", in "Hell to Heaven" he states "I can't quite accept that we who have so much watch others die. Who designed this world we live in?"

ESTABLISH CREDIT NOW!

VISA/MASTERCARD
DRIVE

Feb 20-24th
12:00-2:00 p.m.

Donovan Dining Center

Must be a junior, Senior, or Graduate Student.
Please bring a class schedule.

BANK OF AMERICA
Sponsored by the Accounting Club

Divinyls

continued from page 4

tight work on vocals. "He sets up a good atmosphere for us in the studio," she explained. "I think it's *Tempermental* my first favorite album to date. The studio for me has always been sort of...daunting, 'cause I'm very much a live performer."

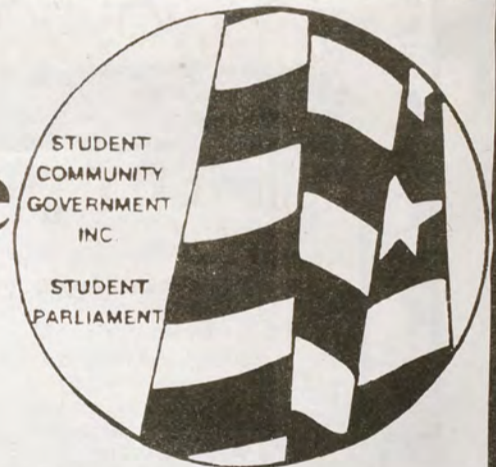
Not that there's a hint of staleness on the album; Amphlett's vocals might sometimes appear tame, but don't let the few ballads the Divinyls perform fool you, she's anything but shy on *Tempermental*. From the dynamics she and McEntree wrestle with (vocals and guitar) in the title track, "Tempermental" to their playful remake of the Syndicate of Sound's hit, "Hey Little Boy" to the temper tantrum Amphlett portrays in "Dirty Love," I got the feeling Amphlett and the band were letting out their frustrations in

some of the songs. Maybe this is one of the best attributes about *Tempermental*. As she said, the music and lyrics are very closely linked. With this album, you run into a lot of different emotions. "Our music is quite bold, loud and aggressive," she said. "We write about our experiences and about what we're going through at the time. They're very much a reflection of what we are."

There's a bit of trouble in the lyrics, I suppose. The songs are about the grittier side of things...often about romantic strife. I don't know, it's hard for me to be objective of what we write about, because really, we just write about what's around us. We've tried to make it more positive."

The song "Better days" probably predicts what's around the corner for these Aussies: "I'm back/Don't need a shoulder/I'm getting older/Getting much bolder/Changing those dreams for facts..." It's a start anyway, right?

Student Parliament Seats And Committee Vacancies



CONSTITUENCY I
(Humanities)
(2) two seats available

CONSTITUENCY II
(Mathematics & Science)
(3) three seats available

CONSTITUENCY III
(Social Security)
(3) three seats available

College Committees

Athletic, Intramural & Recreational Policy - 2 Students
Audiovisual Advisory - 1 Student
Bookstore Advisory - 1 Student
College Lectures & Films - 2 Students
Library Advisory - 1 Student
Performing & Fine Arts Commission - 2 Students
Traffic & Parking - 1 Student
Undergrad Admissions - 1 Student

Parliament Committees

Conditions & Services - 2 Students
Off-Campus Events Committee-
3 Student Parliament members

Petitions may be taken out
during office hours.
S.U. Room 200 x8088

GET INVOLVED NOW!!

EDITORIAL

Students should be heard through teacher evaluations

You've had this teacher who you don't think is very good at teaching. You've said so on your student evaluation. Does this mean that the teacher might not receive tenure?

Or you know an instructor you think is outstanding, and for some inexplicable reason, is not rehired or does not receive tenure.

At the University of Rhode Island the Student Senate has begun lobbying to make student evaluations of teachers a more important criterion for achieving tenure. Like some at Rhode Island College, URI students feel that they have little input in the decision of tenure and wish to do something to change that.

According to the contract for professors at RIC, tenure is "a constitutional instrument for determination of the preeminent members of the professorial faculty." The contract also states, "The primary purpose of tenure is to protect and reinforce the academic freedom of the faculty member in carrying out his/her professional duties, namely, the preservation, extension, and dissemination of knowledge."

Tenure is really the decision of a committee, in conjunction with the department chair, the dean, provost, and the president, which basically guarantees a professor against being laid off or fired *without due cause* (such as violating a moral standard of the community). But if the teacher does not receive tenure in an allotted time (usually within 5-6 years), the professor will not be reappointed.

The committee at RIC reads student evaluations and considers them as part of the final judgement. Although sometimes professors have a bad semester or two, the committee notices patterns and problems with the teacher's relations with students that might have occurred over the years by considering student evaluations.

Though some students might disagree, student evaluations of professors are said to be very important in the issue of deciding tenure here at RIC.

There is an additional problem: according to URI's student newspaper, *The Good 5¢ Cigar*, instructors' tenure seems to be based more on the number of articles, treatises and other research they have published. The implication is that judging a teacher solely on her or his publishing record is unfair because it isn't a good indication of performance in the classroom.

While the image and caliber of professors to be found at any college or university is important, what is more important is the way in which those professors are able to work with the students and how well students learn from those professors. Though they may be on the cutting edge in their fields, if they are not imparting that knowledge to students, they are not succeeding at their jobs.

A recent book, "Profscam," charges that such high caliber professors are hardly ever found actually teaching. More often they can be found on sabbatical or out on the lecture circuit, their classes actually being taught by a grad assistant.

Fortunately, Rhode Island College does not often find itself placed in that position. Professors here are accessible to the students they teach. For an institution which may have a primary focus on research, such as URI, perhaps the question of publishing record is more important.

However, as the URI Student Senate has pointed through their laudable efforts, it cannot and should not be the only or the most important criterion. At any institution, the opinions of the students who must actually work with and learn from instructors should be heard, loud and clear, through their student evaluations.

Letters to the Editor / Commentary

Letters to the editor must be received one week in advance of the intended publication date. Please limit length of letters to 250 words. The Anchor will attempt to print every letter received by deadline. Anything deemed inappropriate by editorial decision will not be printed. The Anchor reserves the right to edit all letters, commentaries and 'Anchor Line' comments for space and libel. Submissions in this section of the paper, with the exception of the editorial, are printed on a contributor basis and do not necessarily represent the opinions of the paper. All letters must be signed and include a phone number for verification.

Editor:

Reproductive rights are the rights of women to have babies or not to have babies. Reproductive rights begin and end with sex without contraceptives or sex with contraceptives. Abortion is not a form of contraceptive, at least it is not officially classified as one even though a large percentage of the American female population through ignorance and selfishness chooses to make it their contraceptive choice. Does the law concern itself with the rights of women to reproduce? The answer is no. The right of a woman to abort an unborn baby is no right at all, but rather, the badge of immorality and lack of personal character and conviction.

A woman is not forced to become pregnant except in the case of rape. Becoming pregnant is no accident or cruel twist of fate that randomly falls on the just and the unjust alike. Before the abortion there is pregnancy and before the pregnancy there is sexual intercourse and before the intercourse there is the decision that begins the genesis of abortion. Why is it that women are so adamant about having the right to control their bodies when sex is concerned?

Is the woman's inability to "just say no" to sex something specific to their gender? Why haven't we passed a law forbidding them to have sex? It is evident from the number of abortions taking place each year in this country that they cannot control their sexual urges.

Ahh, but you will argue that there is that male factor that surely must figure into this whole messy business somewhere. But, I will remind you that we are only concerned with the rights of women to control their bodies and not the rights of men to influence those rights. So, if they (women) don't have sex then they won't conceive children and consequently they won't be forced to do home abortions and endanger their lives as well as murdering their unborn children.

Furthermore, current statistics on the number of teenagers getting pregnant, giving birth and then keeping their babies is proof enough that the gruesome picture of a desperate teenage woman conducting her own abortion in some abandoned building with a coat hanger is theatrical at best, but less than relevant to illegal abortion.

Teenage women endanger their lives in staggering proportions every day with drugs, yet we won't legalize drugs which many consider an area of personal rights and freedom.

Roe vs. Wade is not about women's reproductive rights, it's about selfishness and stupidity. Selfish women who want to have immoral sex lives and be irresponsible when it comes to proper birth control. If a woman does not want to carry a child for nine months then she shouldn't have sex. If she finds she cannot "just say no" then she ought to take the precautions necessary to prevent conception. Women already have the right to control their own bodies. The problem then, arises from their inability to exercise that right.

Roe vs. Wade was passed because there arose a "need for legal and safe abortions" out of a nation of promiscuous people who could not control their bodies and did not want to live with the consequences of their actions. If the decision is overturned American women will not lose a fundamental right -- the right to control their own bodies -- but rather they will simply lose the "quick fix" solution to their problem of an unwanted baby.

Mark W. Goodwin

Editor:

AIIESEC, the International Association of Students in Economics and Business Management is experiencing major trouble with Rhode Island College facilities. AIIESEC is a non-profit, non-political, entirely student-run organization that works as an exchange program in 72 different countries.

In Rhode Island we are made up of three schools: Providence College, Brown University, and Rhode Island College. Notice the order that I placed these schools in -- Rhode Island College is last. Well, that's how many people unfortunately view our school. Who's fault is this really, and what causes the Rhode Island community to think this way? It's difficult to pinpoint the reason, but a lot of what contributes to this is that Rhode Island College DOES NOT recognize its organizations. We are people, too, with ideas and plans that can clearly benefit

the school immediately.

Rhode Island College, Brown, and PC work together on everything we do with AIIESEC. If there is an event that we would like to hold, one of three schools will reserve a room for a lecture or motivational seminar. However, Rhode Island College always seems to be a last resort to AIIESEC, since we have experienced so much red tape just to reserve a room, or advertise to market the AIIESEC program. Just like every other organization on campus, we too try to advertise our program because we believe that it can benefit the students as well as Rhode Island College. The problem is, Rhode Island College is making this awful difficult for us. We, as an organization, don't only wish to have recognition, but we strongly wish to benefit the college and give it the credit that it deserves. It's a terrific school and that's why I attend it. I love these new efforts to advertise on television "learn about it" but we are "it" and we deserve to be recognized and given the facilities and resources to do some of the things we want. Some time ago, Michael D'Orsi from AIIESEC wrote to the *Anchor* regarding "apathy on campus". Well, where does it come from and why are we as students so discouraged here at Rhode Island College? I am always told that, "school is what YOU make of it, Alexandra". Believe me, I am trying so hard to remember this! It's terribly difficult to remember when almost every resource here is inaccessible to the clubs and organizations on campus.

Our AIIESEC-RI president at Brown University has recently asked me to do a simple task; "Would you please call your dining services and reserve a room for a luncheon?". So I gladly agreed and attempted to follow through with his request-- unsuccessfully. Instead of a simple "yes" or "we'd be glad to accommodate these people", I was told that "so and so is in a meeting, and we can't do that on a Sunday anyway. You can't use the Faculty Center and can't bring any caterer on campus..." This type of situation, unfortunately, is a regular occurrence at Rhode Island College with many of the organizations. It's not as if we don't try. Why should we have to go through such a long process of red tape to do something which is benefiting our own college. You'd think Rhode

Island College would welcome our group and possibly extend a hand to get us that room, or give us that advertising space. As a result, AIIESEC looks to PC or Brown for a room. My biggest argument is that AIIESEC was counting on the Rhode Island College and they let us down. The group that was to attend this luncheon is our Board of Advisors, consisting of prestigious members of the business community (Two of us are Rhode Island College faculty). We wanted to show them our appreciation for all they have contributed to the AIIESEC organization

in RI, by giving them a luncheon in a room such as the faculty center. What's so difficult about that? Apparently some people at Rhode Island College do not wish to improve its image... that was proven to us when they pushed away a tremendous opportunity.

Alexandra Petras

Correction -- In last week's issue, the name of the Band "Thinly Sliced" was incorrectly spelled. The Anchor regrets the error.

The Anchor Line

Purchasing personality

I'm a student worker and I'm very upset at the attitude of the employees in the Purchasing Department. I am constantly asked to deliver certain things to other departments, and I've never encountered such inconsiderate people.

When I arrive, I stand there and I get stared at.

Then I wait 'till someone acknowledges me, then I deliver the envelope, receive a flip comment about the contents, and finally leave feeling unwelcomed and humiliated.

I felt that someone should be made aware of the situation.

If these people are supposed to represent the caliber of RIC, someone should be concerned and be directed toward their behavior. Thank you.

-- PO'd at Purchasing

Astronauts vs. Hampsters

I'm a student teacher at Rhode Island College and I know those media ads are out on TV right now and the feedback I get from students is that they like one ad -- the one with the hamster, showing 83 percent (success) in getting a job -- vs. the nerd-looking ad with the astronaut they feel it does attract attention, but it looks more ridiculous.

So let me edit this: the ad showing an astronaut does attract attention, but it does look a little ridiculous rather than collegiate or professional. The ad

Do you have a gripe? A question? A compliment to pay? Then call and speak your mind on the ANCHOR LINE, 456-8544. You don't need to leave your name, but if you want The Anchor to investigate a potential story, please leave us a way to contact you for more information on the subject.

showing that 83 percent of the graduates are now working in their respective fields, that's an effective ad.

Although you had said RIC student expectations are high, but what about the students who want to go here. And who's responsible, especially for that astronaut ad? Why that ad? Those things haven't been explained.

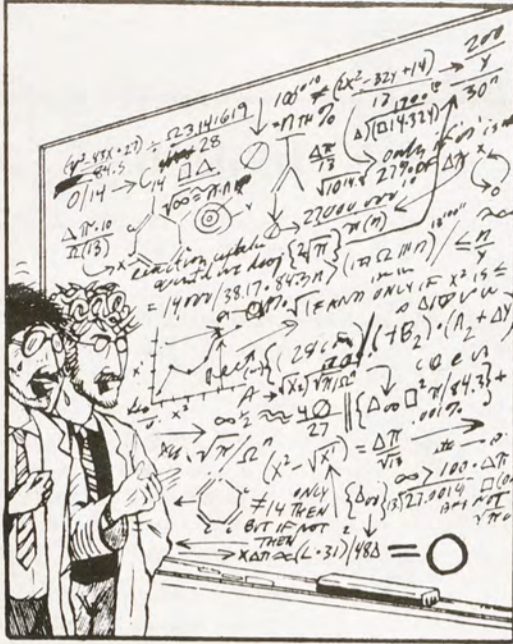
Trashy reading

I don't think my name is very important, but the other day around 5 o'clock I was leaving school and I happened to be walking through Craig Lee and there were piles of Anchors in the corridors.

There was a janitor there cleaning up and throwing brand-new Anchors that had just come out that day into the trash barrels. I don't know how many are in each pile, but big piles of them, and I thought it was such a shame, and someone should let the janitors know that they shouldn't throw away brand new Anchors.

According to Dr. James Cornelison, Asst. V.P. of Administration and Finance, cleaning crews are under instructions to remove litter, and some students who read the newspaper often leave them spread out where they were sitting. Soon there are loose papers scattered everywhere. Evidently new papers are being thrown away with the old. It will take the help of students to correct this problem.

It is, of course, seemingly hoped than is every wash and weary. Yet however it more the less, and anyway we were all thought so anyway, so there. And don't we all?



"We did it! We finally solved the greatest mathematical problem of the twentieth century!"
 "Yes, but somehow I get the feeling that all our work was for nothing."

THE MARVELOUS MISADVENTURES OF CORVUS BANE



THINGS THAT ARE SUEDE



NATIONAL STUDENT EXCHANGE

You Don't Have To Join The Army To Have An Adventure

An opportunity to study for up to one year at one of 83 colleges and universities in the United States.

Applications for 1989-90 Academic Year Now Being Accepted.

Deadline: March 9, 1989

For more information, call or visit
 New Student Programs
 Craig-Lee Hall, Room 060
 456-8183

NOTICE OF RHODE ISLAND COLLEGE STUDENT COMMUNITY GOVERNMENT, INC. STUDENT PARLIAMENT FINANCE COMMISSION

FINANCE COMMISSION BUDGET HEARINGS FOR 1989-90

SATURDAY, FEBRUARY 25, 1989

- 1) 9:30 am - WXIN
- 2) 10:00 am - History Club
- 3) 10:15 am - Philosophy Club
- 4) 10:30 am - International Society
- 5) 10:45 am - Nursing
- 6) 11:00 am - Accounting Club
- 7) 11:15 am - Anchor
- 8) 11:30 am - Cooperative Playgroup

***** Lunch Break 12:00 noon *****

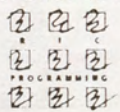
- 9) 2:00 pm - A.S.A.
- 10) 2:15 pm - Physical Education
- 11) 2:30 pm - LASO
- 12) 2:45 pm - Human Resource Management
- 13) 3:00 pm - S.O.S.
- 14) 3:15 pm - Debate Council
- 15) 3:30 pm - VISA
- 16) 3:45 pm - Physical Science
- 17) 4:00 pm - Sports Medicine
- 18) 4:15 pm - Biology Medical Technology Club

SUNDAY, FEBRUARY 26, 1989

- 1) 9:30 am - Chess Club
- 2) 9:45 am - R.S.A.
- 3) 10:00 am - Social Work
- 4) 10:15 am - Programming Board
- 5) 10:45 am - English Club
- 6) 11:00 am - Payroll Account
- 7) 11:15 am - SCG. Inc.

***** 12:00 noon Lunch Break *****

- 8) 2:00 pm - Harambee
- 9) 2:15 pm - Industrial Technology
- 10) 2:30 pm - Denouement
- 11) 2:45 pm - Washington Internship
- 12) 2:50 pm - Class of 1990
- 13) 3:15 pm - AIESEC



RIC PROGRAMMING PRESENTS

THE BANGLES



TUESDAY, MARCH 21, 1989

WALSH GYM

WIN FREE TICKETS

From the ANCHOR

You have three chances to win!

one lucky winner will be chosen on the following dates:

Friday, February 24

Friday, March 3

Friday, March 10

Congratulations to last week's winner:

Phil Loussarevian

To enter, bring the entry form to the Student Union Information Desk

FREE!

Bangles Tickets
OFFICIAL
ENTRY TICKET

Brought to you by RIC Programming in conjunction with The Anchor

Please complete the information below:

DEADLINE FOR WEEKLY ENTRY IS FRIDAY, FEB. 24, NOON
Winners will be notified by phone.

Name _____

Telephone Number _____