

INSIDE Arts&Entertainment

See:

What Happening p.8
Attack of the
Summer Movies III

INSIDE News

See:
Student
Organizations Day p.3
WXIN p.1

INSIDE: Sports

See:

Soccer Preview p.7
Sports Information
Director resigns p.7

Established 1928

Rhode Island College

Monday September 17, 1990

Free



The Anchor



"Free access to ideas and full freedom of expression"



Last Tuesday the Resident Assistants sponsored the 7th Annual welcome back party for dorm residents. This year's theme, a toga party, went over very well.

-photo by Jeff Damiano

Major changes effect Communication Dept.

by Lynda Michael
Anchor Staff Writer

A series of changes marks the beginning of the new semester in the communications department. Two members of the department faculty, Mark Lloyd and Azra Bhatia, will not be returning to teach. A third, Mark Goldman, has taken a one semester sabbatical.

On August 15, Mark Lloyd handed his resignation in to Rhode Island College. Although he had numerous reasons for his decision, the main factors were, as stated in his resignation letter, a lack of interest from RIC administration in the telecommunications field, and a disorganized communications department. According to Dr. Lawrence Budner, department chairperson, Lloyd also mentioned in the letter that he did not like the procedure for hiring as it was carried through in the department, and was in disagreement with compensation benefits for teaching an "overload" of courses.

Lloyd leaves the department to pursue other interests, and is replaced by Thomas Zorabedian, a temporary full time assistant professor.

Azra Bhatia, who finished a three year teaching appointment, was not chosen in the recruitment search to resume her position. Bhatia had the choice at the end of her ap-

pointment to seek "reelection" for the job. Although she did apply as a candidate, she was not selected. Dr. Phillip Palombo replaces her.

A perennial faculty member in the department, Dr. Mark Goldman, will return to teach for the spring 1991 semester. Goldman has taken a one semester sabbatical to develop a computer program for a public speaking course.

Although the faculty changes came as a surprise to many students, the department tried to minimize potential schedule hazards for the students. Lloyd's very recent resignation caused a time switch in one class. Two other offerings were actually canceled due to low enrollment.

Dr. Budner stated that the spring schedule would "make more sense," and if at all possible, "head off many problems in the student schedules."

From the Ed.: Welcome class of 1994 and all returning students. The Anchor is published every Monday and distributed around campus. If you have any comments, complaints or ideas, you can contact us in the SU room 308 or 456-8280.

Largest New Class Enters College

Parking, Dorm Space at a Premium

By John Valerio
Anchor Editor

Rhode Island College is on the move. With the largest new class of students to enter the college in the last ten years, and a new dorm on the way the college seems to be preparing itself for the future.

This semester 1,170 freshmen combined with 974 transfer, readmitted and second degree students for "the largest class of new matriculants in the history of the College" according to William H. Hurry Jr., Dean of Admissions and Financial Aid. This represents about a ten percent increase over last year's figure of 1,951. Hurry reported that the SAT scores of the freshmen were "close to those of last years class...maybe a point or two different". "We did not enlarge the class size by diluting the academic field." The final numbers on enrollment, SAT scores and financial aid are still being computed, according to Dennis McGovern, Associate Director for Records and Scheduling. According to Hurry, about 60% of incoming freshman are receiving some form of financial aid.

The increased number of students has led to an increased number of cars on campus. Richard Comerford, director of security and

safety, said that the increased parking problems has caused the college to begin parking on the grass behind Alger Hall. Comerford stressed that this is on a "strictly temporary basis". Parking on the grass is a "temporary thing for the first two or three weeks, until everyone finds out where they can and cannot park", and until students start to car pool and start taking advantage of public transportation. Besides the parking problems, Comerford reported that everything was "business as usual" in the security department.

On August 23, College President John Nazarian, Governor Edward DiPrete and members of the Board of Governors for Higher Education broke ground for a new residence hall. The new hall will house 210 students and is scheduled for completion in the early spring of 1991 at a cost of \$4 million dollars.

While a new dorm will help bring in more students to the college, it cannot reduce the overcrowding that is in the dorms now. Some students have reported that dorms that in former years were for two people are now holding four. "We have a number of students doubled up which is not a new problem. During the course of the fall semester this will straighten itself out".

WXIN: Under new management

by Hugh Minor
Anchor Staff Writer

There's a new General Manager at WXIN, 88.1, Rhode Island College's student run radio station. His name is Peter Boland and he brings new prospects and a new outlook with this philosophy:

"I don't think anything is out of reach, if you put your mind to it."

Peter has been putting his mind to improving the radio station since he first came on as traffic director in his freshman year, 1987. He went on to become a DJ and to do the news. For two years, he was Marketing Director, and now he has risen to the top position, General Manager.

"I am thankful and fortunate for the fun I've had, the career experience I've gotten, and the great friends I've made."

As Marketing Director, he helped to expand the public's knowledge of the station. He made exchanges with businesses for

airtime, getting the station funds and recognition. He created promotions and ran contests to get the student body aware of the great music being played. And he also helped to organize the now-famous Coffee Ground Parties, sponsored by WXIN. "They started off small at first, then suddenly they became huge."

With that success came an increased audience to a station whose frequency does not reach that far. That is one of Peter's goals, to increase the station's frequency. He calls it the FM Project.

"It's difficult because it involves a lot of paperwork with the FCC in Washington, D.C."

While the station may not reach out beyond campus. It's getting air-play on it. The Donovan Dining Center is receiving WXIN. Now the radio station "has a higher profile on campus".

He wants to increase the station's campus

See WXIN, p.2

Five students attend Kingston PolyTech, England

by Bob Carney
Anchor Editor

The International Study Abroad Program is sending five of our students to Kingston PolyTech in Kingston, England this fall. They are Donna Barotto, Julie Marz, Ed Brock, Kevin Fagan, and Scott Sloan.

The International Study Abroad Program encourages students to study and live in a foreign country. During an interview these five students expressed how they felt going to a foreign country.

Donna, a senior from Providence, will be staying at Kingston PolyTech for three semesters. She first found out about the program in September 1989, because she was interested in working and studying abroad. She is "very much looking forward to traveling and seeing different cultures." Donna plans to take History and Social Science classes and work about 15 hours a week.

Julie, a senior from Gloucester, intends to stay at Kingston PolyTech for a semester. Julie found out about the program last fall by searching for it on her own. Julie will be student teaching elementary children and taking a British Culture class (a sightseeing class where you learn all about England) this fall. "I always wanted to student teach abroad and I am looking forward to going to England." When Julie comes back in January, she must student teach again because the college does not accept student teaching abroad. Julie doesn't mind because it will be a "good experience."

Ed, a junior from North Kingstown, is also staying in England for a semester. "I was looking to do something different and found out about the program." This will be his first time going to England and he is looking forward to going this fall. Ed will be taking Business and History classes at

Kingston PolyTech.

Kevin, a junior from Narragansett, will also stay in England for a semester. Kevin first found out about the program by talking to students from other schools, and in September 1989 found the program at RIC. "I am looking forward to going to England." Kevin will also take the British Culture class and some sociology classes.

Scott Sloan, a junior and business major, was unavailable during the time of the interview.

The two people who made it possible for these 5 students to study abroad, are Dr. Meradith McMunn, director of International Study Abroad Program and her student assistant, Alexandra Petras. According to Alexandra, this program has been at the college for about a year. Dr. McMunn and Alexandra provide information and counseling services to students who are interested in the program. Dr. McMunn said, "students have traveled abroad and studied in England, France, Spain, Italy and Switzerland." There are programs available to students for one year, one semester, or even a few weeks for those who are interested in studying abroad.

Anyone interested in applying for the program requires junior status, a 2.5 grade point average, and must have completed all of the General Education requirements. For more information and applications, contact Dr. McMunn in Craig Lee 353, phone x8675 or x8454.

There are also scholarships available for students who need financial help. The International Study Abroad Program is awarding Ridgway F. Shinn, Jr., Study Abroad Fund in the Spring of 1991. You may also contact Dr. McMunn for an application or pick one up in Craig Lee 233. Application deadline for the award, is on January 7, 1991.

Texas Lt. Gov. suggest closing black campus

HOUSTON (CPS)- Lt. Gov. Bill Hobby suggested the state close financially ailing, predominantly black Texas Southern University, Aug. 27.

"If you believe in an integrated society," Hobby said at a legislative committee meeting, "you cannot also be intellectually honest and advocate black universities any more than you can advocate white universities."

Former TSU Regent Mack Hannah replied, "I am shocked. He is dead wrong about Texas Southern."



If you started looking for a parking space at 8 a.m. and it is now 10 a.m., try the field near Alger Hall. They won't ticket you after 10. -photo by Jeff Damiano.

Volunteers needed

The Samaritans, Rhode Island's suicide prevention center, is looking for volunteers who are caring, non-judgmental listeners to answer the 24 hour crisis line in the center's office at 2 Magee St., Providence.

A new training session for crisis line volunteers is scheduled to begin September 25. Evening training classes are held at The Samaritan Center, at 2 Magee St., Providence. The sessions have seven, three hour classes covering befriending, depression, grief and loss, confidentiality and other issues involving suicide prevention. Volunteers are asked to call the office at 272-4516 to arrange for an interview prior to training.

New campus I.D.'s

by Anthony De Stefanis and Liz Myette
Anchor Contributors

As you turn off Mount Pleasant Avenue onto the campus, you approach one of the crowded parking lots. As you near the entrance, you pull out your new campus I.D. card, insert it in the access gate slot, and drive into your space. Sounds like a dream? Maybe for this year, but the new CBORD IDENTIFICATION SYSTEM has opened some interesting options for our campus.

The new system rose out of the need for a universal I.D. card, which makes use of the I.D. much more efficient, as opposed to the cumbersome four card system formerly used on campus. Therefore, in 1984, Brian Allen, Director of the Campus Center and Vincent Flemming, Associate Director of the Campus Center for Dining Services, began looking into dining center access cards that were becoming commonplace on campuses throughout the United States. The main obstacle in the path of bringing in a new system was that a cost efficient way of doing so could not be found. This barrier was overcome by the fact that the new I.D. system will be utilized by many Departments and Activities, addition to dining services.

In the first year of use, the I.D. system will perform only a small portion of its intended capabilities. It will be used mainly for access, authorization/non-authorization. Computer terminals that will determine authorization status are set up in the Recreation Center, Adams Library, Dining Services, The Information Desk in the Student Union, and the Roberts Hall Box Office.

The second and third years of use is when the new I.D. cards will bring new advantages to Rhode Island College students. A meal plan for commuter students will be set up. This will allow these students, who make up the vast majority of RIC's population, to pay for meals in Donovan all at once and receive a meal card just like residence hall students. Another possible service is a debit plan where students, or their parents, can establish an account balance from which they can purchase items from the bookstore, cash checks, and purchase tickets.

Also, the I.D. cards can be used for access into parking lots, where arm gates will be installed as well as access into the residence halls where the cards will be the "key".

The cards were distributed to freshmen at Orientation. All other Rhode Island College student, faculty, staff, and non-RIC community users of the Recreation Center must go to room 320 of the Student Union to get their card. Hours for obtaining a new I.D. will be posted in the Student Union. For more information, call Liz Myette at 456-8394.

The anticipated completion date for initial picture taking is September 29th, 1990. All old cards will no longer be valid. Be sure to pick up your new campus I.D. card TODAY.



Peter Boland, General Manager of WXIN. -photo by Jeff Damiano.

The Anchor

Established 1928

Editors:

Co-Executive: Bob Carney
Donna Theroux
News: John Valerio
Production: Donna Theroux
Graphics: David Lineberger
Copy: Jennifer Hazard
Arts&Entertainment: Margaret Gordon
Sports: Kristen Del Bonis
Advertising: Tony Ramos
Managing: Stacey Levett
Business: Doug Gregoire
Photography: Jeff Damiano

Public Relations:

Manager: Paula Ranucci

Staff Writers:

Hugh Minor, Lynda Michael,
Tom Giamarco, Jodie Bennett

Staff Photographers:

David B. Eros, Michelle Irons,
Jen Kessler, Lynda Michael

Faculty Advisor:

Dr. Moyne Cubbage

Professional Advisor:

John Granatino

Editorial decisions for The Anchor are made by the majority vote of its student editorial board. No form of censorship will be imposed. Any material found to be unsuitable or unacceptable in the board's opinion will not be published.

The Anchor is located on the Third Floor of the Student Union, Room 308
456-8280

Government Books & More!

Send for your free catalog

Free Catalog

Box 37000

Washington, DC 20013-7000

HOW TO LIGHT A SET

New LIGHTING REFERENCE MANUAL features unique series of easy-to-follow lighting techniques for beautiful INTERIORS, LOCATIONS, NIGHT SCENES. Concise "Step 1-2-3" formats guide you, minimize trial-and-error, and maintain mood & continuity between shots. 36 information-packed Reference Sections reinforce film stock, exposure meters, filters, processing and more. Unlike any book on the market. WRITE TODAY for the exciting details.

LIGHTING REFERENCE MANUAL

22949 Enadita Way AC07 West Hills, CA 91307 Or Call (818) 377-5200

WXIN

continued from p.1

orientation. "We want to provide more campus news." The news team receives information from the Associated Press, but they want to present more pressing local issues.

The radio station's playlist has become more focused upon the mainstream. The music is progressive, which most college kids want to hear. He recognizes this taste and replies "then that's what I want to give them."

It's a heavy load for someone in his senior year who is also a Resident Assistant at Weber Hall. But he is backed by "the Best XIN crew ever."

They work together as a team and support one another's ideas and contributions. Peter wants to prepare the crew members to handle the station when he graduates and enters the world of Radio Station Marketing in May.

These students will be well-prepared. They appreciate the hard work that Peter gives. Tom Chaputto and Amy Silva say that he is "always there" to help the station provide good ideas, and so far he has done nothing but that.

(Editor's note: For WXIN schedule see page 4.)

Student Organizations Day

By John Valerio
Anchor Editor

-photos by Michelle Irons

About 50 student organizations and on-campus groups gathered outside the Student Union last Wednesday. According to Kristen King, Coordinator of Student Activities, the event "gives exposure to student organizations and gives them an opportunity to recruit new members." The event was held during the free period and offered students the opportunity to talk to organization members. "It is an excellent way for the organizations to be visible."



Do you have a good time on campus when you are not at class? If so, it's probably because the Campus Center's doing its job. These people support more activities then there are cars illegally parked on a Monday morning.



Like basketball but don't want to run? Enjoy wrestling, but don't like to sweat? Want to try football, but RIC doesn't offer it? Try cheerleading and show your support for all the RIC athletic teams.



The RI College Theatre Organization puts out four shows each year with many other smaller projects. If you are interested, why not check it out on Sept. 26th at 7 p.m. in HBS rm 225. Maybe they will teach you how to juggle.



Interested in meeting new people from all over the world? Check out AIESEC. Just the thing you need to fill your passport.



Do you like The New Kids On The Block, Michael Jackson or The BeeGees? Don't go to WXIN. But if you like rock, rap reggae or any other music, you should listen to WXIN and hear what they've got.

Editors note: The following column is the first in a series by RIC student, Tom Giammarco. These columns will relate his experiences overseas as a member of the Peace Corps. The stories are rewritten from his personal journal and letters he had written home. Giammarco hopes that by relating some of his experiences he can show others the benefits of doing volunteer work, "you're not going to change the world, but you can touch someone's life and that's just as rewarding". Giammarco is a 1988 Anthropology graduate, and is currently enrolled at RIC.

by Tom Giammarco
Anchor StaffWriter

One of my best experiences in Jamaica happened early in my stay there. It was my second day in the country and I was getting a tour of the Kingston/Portmore/Spanish town area from the regional director of my program, Father Bill. One of the places we stopped was the Saint Monica's Bolden Age Home outside of Spanish Town. Most of the residents of Saint Monica's were impaired senior citizens, same as you would find in any nursing home, but about two dozen of them had leprosy.

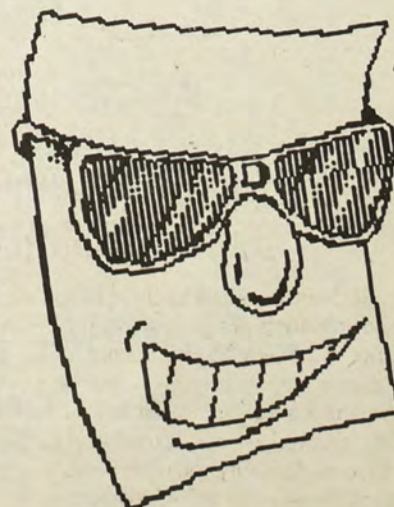
This wasn't the first time I had seen people afflicted with leprosy. In Africa I had seen several in the streets of Lilongwe and the affect on me had been the same. I was scared. The thought of catching this terrible disease was making me afraid to even touch the walls in case someone in the home who was afflicted had touched them. I couldn't wait to get out of there. That was until I met Miss Lillian.

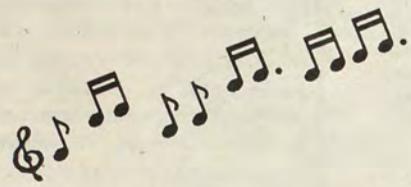
Miss Lillian may be the most beautiful person I have ever met although she was not physically beautiful. Leprosy had taken her feet, fingers, much of her ears and her eyesight.

Listening to her talk reminded me of a small bird, full of curiosity and chatter and feeling such joy. We talked for a long time while my guide was away. Her voice recalled the sounds and smells of flowers in a warm breeze.

Eventually, I had to take my leave of her. As she said goodbye, she started to move her arm. It may just have been a twitch, or she may have instinctually extended her hand, but changed her mind out of fear of rejection. Whatever the case, I had already made up my mind. I knelt beside her and took her arm in my hands to say goodbye. The brightest smile I had ever seen came across her face. She then pressed what was left of her other hand on top of mine and said "God bless you".

It is impossible to describe how I felt when I saw how happy she was. She was glowing and I felt like I was glowing, too. That's the only word to describe how I was feeling. It was like there was a huge light inside me trying to reach out to everyone. I hope that someday everyone can experience that same feeling. It's something you'll never forget.





WXIN Programming Schedule

Monday	Tuesday	Wednesday	Thursday	Friday	Saturday	Sunday
8-11 Dave Morris All request	Chris/Vin Classic Rock	Doug	Tom Sylvester Progressive	Jay Erban Classic Rock	HJB Dance/ Reggae	ALL
11-2 Amy Silva/ Desiree Progressive	Glenn Haverson Progressive	Mainstream Matt Progressive	Tom Kaput Progressive	Tim Smith Progressive	Curtis & Titus Reggae	METAL
2-4 Dan Card Progressive	Jim Kennedy Progressive	Mad Markus Progressive	Becky & Linda Progressive	Renee Progressive	Tim Chair Progressive	
4-7 Tom Kaput You'll Dance & Anything	Dave Anthony Dance Jam	HJB Funk/ Rap	Dave Anthony Dance Jam	HJB Rap/Funk	J. Carnage/ Ty Jesso Alternative	SUNDAY
7-9 Bill & Tom's Criminal Cafe	Generic Show	Mitch & Leclair All Request	Shawn McBride Hardcore Dungeon	Friday Night Jazz with Jonathan McCurdy	Dina Ellis Alternative	11-10 p.m.
9-12 Ted Donnelly All-Request	Tom Greenan All Request	Brennan Reggae	Brennan & Dave Morris All-Request	Dino Progressive		



Convenience Store

WE ARE NOW
OPEN

Monday thru Thursday
until 7pm

All Campus Store
merchandise is available
through the Convenience Store
in the evening.

Check our sale table
for great clothing buys.



A Public Service Message Ad Council U.S. Department of Transportation

CSA Catholic Student Association

meets

Weekly on Wednesdays at 5:00 p.m.

Confirmation Classes starts October 3
Alternate Monday Evenings

NECCA: New England Catholic Collegiate
Association Meeting:

Register September 17 (7:00 pm)

Intercollegiate Retreat: November 16 Weekend

Peer Ministry - Community Service

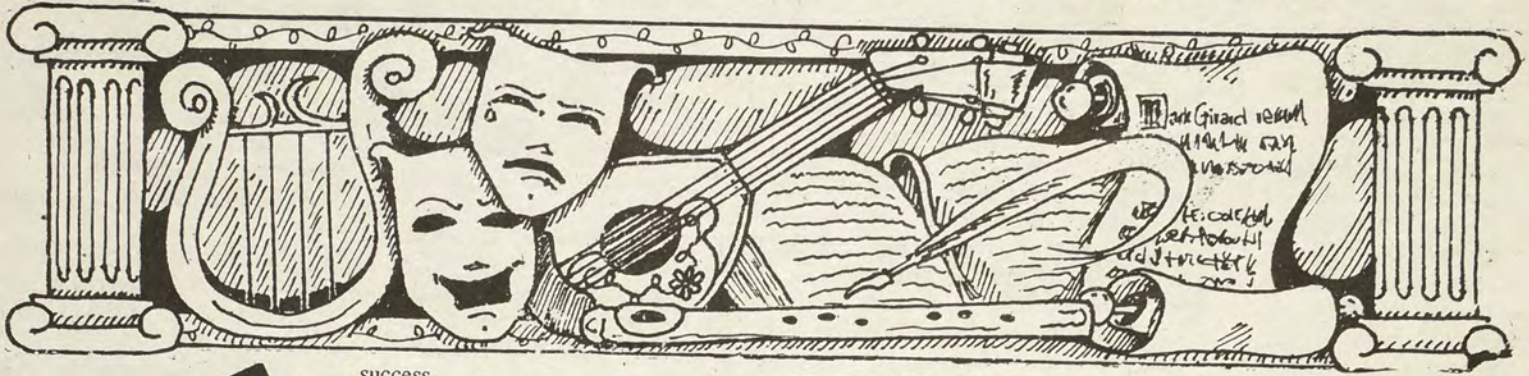
Trip to New York City October 20 - Holy Day Masses

Liturgical Ministry - Interaction with Others - FUN!

Sister Mary Ann Rossi, CND Catholic Chaplain

Student Union Room 300 X8168

ARTS & ENTERTAINMENT



Dreams So Real

Dreams So Real
Gloryline
 Arista Records

by Tannalyn Carroll
 Anchor Staffwriter

Dreams So Real's second album, *Gloryline*, blends acoustic sounds by Trent Allen with the dull rhythmic beat of drums, performed by Drew Worsham. Quite possibly the best song on the album which means very little, is "Faith", found on the first side. Beginning with a guitar solo, its ballad-like melody could set the mood for romance. But for most, I doubt it will.

The monotony of *Gloryline* leads one to believe this band may be in a deep, hopeless rut. The album lacks rhythmic feel and deserves no place on any record store's shelf. Crediting Dreams So Real for their somewhat intense and thought-provoking lyrics seems to be the only compliment one could give. Their title track, "Gloryline", takes a stand on racism, which is admirable, however, without the variety of beat and tempo, it is unlikely that this band will become a

success.

"World Gone Mad", which is sung by lead vocalist Barry Marler and is found on side two, lacks original style, steady beat, and clarity, leaving one questioning its entire meaning.

In conclusion, *Dreams So Real* has little to offer, except perhaps a good laugh. Indeed, it takes a good sense of humor to listen through its entirety...



London QuireBoys

London Quireboys
A Bit of What You Fancy
 Capitol Records

by Jeff Damiano
 Anchor Editor

Do you remember the old Saturday Night Live? I know... Which one? Remember Piscopo, Kazurensky, Hall, Gross, and EDDIE MURPHY? Well, on Murphy's first appearance on the show, he did a monologue saying college students were too uptight; they should "Quit school & drink some beer. Get each other pregnant and play space invaders. Be successful like me." This seems to be the source of all the lyrics on *The London Quireboys* album *A Bit of What You Fancy*.

Half of the songs are about having wild sex and beer drinking parties. They must have run out of new lyrics halfway through the first song, "It's 7 o'clock" (time for a party,) next we get "Man on the Loose," "Whipping Boy," and "Sex Party." Then you can, "Take Me Home". The so-called power ballads couldn't light a 3 watt bulb. The singer sounds like Rod Stewart meets Bret Michaels.

As for the album as a whole, most of the songs (no matter how mindless) have good riffs and you can get into them. But I can't help to think that the song writing resembles the SNL of today rather than the classics of the early 80's.



Last Thursday's WXIN Dance Party was hot, packed, and jammin'. Everyone's looking forward to the next.

-photo by David B. Efras



CONSUMER CORNER

That's DAT

Sounds like a good idea: a better-than-ever type of tape recorder called a Digital Audio Tape recorder. Actually, report the experts at the Home Recording Rights Coalition (HRRC), the DAT, as it's called, has been around for a while. Most Americans, however, have not been able to get one and hear its better quality and clarity and crisp digital sound in a conventional cassette tape format because of legal wrangling.



A new form of tape recording can make your favorite music sound better than ever—if Congress lets you get one.

Now, however, the problem may soon be solved. Congress is currently considering a bill that would standardize the DAT format and allow direct digital recording from Compact Discs but prevent digital copying of the copies.

The experts at HRRC say this bill is a step forward in bringing advanced technology to consumers and consider it a positive, pro-consumer approach to DAT. You can learn what you can do to encourage passage of the DAT bill by calling, 1-800-282-TAPE. You can also let your legislators know what you think by writing to the U.S. Senate, Washington, D.C. 20510 and the House of Representatives, Washington, D.C. 20515.

Attack of the summer movies, part III

Anchor Editor

by Stacey Levett

Alright folks, it's that time again. The time when confusion, I mean, classes start; when you put your bathing suit back in the drawer for next summer; and when we recap some of this past summer's movies. Summertime always brings out the best of films, especially sequels.

Speaking of sequels, *Die Hard II* was one of the best ones of the summer. And yes, it did live up to the reputation of the original. Bruce Willis reprises his role of NY cop John MacLaine battling terrorists in an international airport (instead of a business high-rise) on Christmas - again. Bonnie Bedelia is the Mrs. stuck flying around in one of the planes, fighting humorously with the pig-headed newsman from part one. If you catch this one, you'll be yelling "Yippie-kye-yay!" like Bruno.

One of this summer's most hyped-up mediocre hits was *Dick Tracy*, which showed that Warren Beatty still has it, and also that Madonna can act and sing 30s and 40s jazz instead of her usual Top 40 (take a listen to her *Breathless* album, you'll see what I mean.) You'll also catch a few other great acts such as Al Pacino as Big Boy and Dustin Hoffman as Mumbles. What talent! It's a good story about cops and mobsters. The storyline is good and the acting is great but it's just not as great as everyone said it was going to be. See it anyway; to each his own.

Have you ever read Scott Turow's *Presumed Innocent*? Well, now you can

See Movies, p.6

You Can Always Count On

J.J.F. III

Chauffeuring Inc.
 For All Transportation Needs
 Corporate or Personal.

(401) 725-1360
 North Providence, RI
 Jack Falvey Pres.

Movies

continued from p.5

see it in action, starring the ever-talented and handsome Harrison Ford as Rusty Sabich and Greta Scacchi as the sexually deceased Carolyn Polhemus. Rusty is assigned to and gets accused of murdering his mistress and colleague Carolyn Polhemus (Scacchi). The mystery unravels bit by bit through the investigation in Rusty's defense. Bonnie Bedelia of *Die Hard* I and II fame stars as yet another Mrs., and the ending will REALLY surprise you. If you've read the novel, don't blurt out the ending to your friends; and besides, the novel is better than the movie but the film does give it justice (excuse the pun).

While we're on the subject of death, (I know, I'm morbid) *Flatliners* takes you on a trip into the after-life, more suspenseful than *Beetlejuice*. It stars *Pretty Woman*'s Julia Roberts, *Young Guns*' Keifer Sutherland, William Baldwin (Alec's brother) and *Working Girl*'s Oliver Platt and they certainly keep you on the edge of your seat, one by one. They are medical students who each experience something different after they experiment in death. They all go through with it except Platt, he's the conceited one who fantasizes about his future in the medical field yet tries to talk everyone else out of going any further with the experiment. One sad thing about it is that they all try and outbid each other of how long they will be "dead" in order to gain a slice of fame with their knowledge. *Flatliners* is suspenseful from beginning to end, non-stop. Catch it if you can.

If you're looking for something piggish to laugh at, see *The Adventures of Ford Fairlane*, starring the ever-raunchy cigarette-smoking, bad-mouthing Andrew Dice Clay. The Diceman is a detective for the Rock & Roll business and gets himself mixed up in a shady deal involving Mr. Las Vegas himself, Wayne Newton, who stars as a big-time record producer. If you're a Dice fan, see this film, otherwise you won't enjoy it. By the way, I just thought I'd tell you, Andrew Dice Clay actually sings in this film, and very well I might add. Now this is a rarity. See it; you'll like it, if you like Dice.

Before I go, there is one more movie I feel I should suggest that you see. Go see *Ghost* !! It's about a man who dies "accidentally" and experiences life in limbo (no, I don't mean the party dance). He contacts a so-called psychic for help in finding out the truth about his murder. This is part mystery, part drama, part comedy, which is a great combination. Now, I don't care if you hate Patrick Swayze, Demi Moore (Willis), or Whoopi Goldberg; the story is excellent and so are the actors. Whoopi Goldberg is perfect as the con-artist/psychic; and bring some tissues, this is real sentimental stuff. You'll love it. I certainly did.

Until next time, save your money, movie ticket prices are up again.

Rhode Island Chamber Music Concert

The Rhode Island Chamber Music Concerts will present the Vienna String Sextet on Monday, September 25 at 8pm. in Alumnae Hall, Brown University.

The group will perform:
Mozart Viola Quintet in C Major, K. 515

Brahms Sextet in G Major, Opus 36.

Tickets are available by writing to Box 1903, Brown University or calling 863-2416, and at the Box Office Alumnae Hall, evening of the concert.

Summer '90

Chris Fagan
Anchor StaffWriter

With the start of each new semester things are usually slow in the Arts and Entertainment department of the Anchor. There aren't many records to review and it's usually a slow concert season. So what does a hack journalist have to write about? I guess I could tell you about the concerts I went to over the summer. Hey, it beats reading my Emmylou Harris review!!

I can't exactly pinpoint the first concert I went to but I guess I'll start with Aerosmith at Great Woods. The new clean and sober Aerosmith played a solid two hours mixing their classics with the new stuff. "Mama Kin" was really hot but I took a bathroom break during "Angel." Call me closed minded but the classics come across a lot stronger live. The Black Crows opened but you'll be hearing more about them in the future.

Summer just wouldn't be complete without the Grateful Dead. I can't say enough about the Dead so don't get me going. Rest in peace Brent Mydland. Edie Brickell and Co. opened but I was out in the parking lot contemplating the dirt. Long story - ask me if you have time.

I thought I saw a dinosaur at Sullivan Stadium but when I looked at the video screen I saw it was only Paul McCartney. I'm not knocking the guy. I love his music but it's too mellow and loses something in a stadium. "Live or Let Die" was a visual and aural delight. I also spent too much time at the Living Room. Some of highlights included drinking beer with Chris Doherty of Gang Green and taking part in the Neighborhoods request encore.

Faith No more was a moshing good time. If you were there you know what I mean. To the guy who broke my window - Just mail me a check for \$25.00 in care of the Anchor. Thanks.

Anyway, those are some of the shows I saw. In the next issue I'll have my Emmylou Harris review and we'll really get crazy. Keep on rocking in the free world. Support local bands especially Boneyard and Uber Alles.



LIFE IS YOUR MOST VALUABLE POSSESSION.

PASS IT ON.
Of all the riches you could leave to your family, the most precious is the gift of life. Your bequest to the American Heart Association assures that priceless legacy by supporting research into heart disease prevention.

To learn more about the Planned Giving Program, call us today. It's the first step in making a memory that lasts beyond a lifetime.



This space provided as a public service.

Drug and Alcohol Abuse Prevention Statement : A Message to the RIC Community

"Drug-Free Schools and Campuses", authorized by Section 1213 of the Higher Education Act of 1965, and the ammended by the Drug-Free Schools and Communities Act Ammendments of 1989, require that institutions of higher education certify that they have "adopted and implemented a program to prevent the unlawful possession, use, or distribution of illicit drugs and alcohol by students and employees" in order to receive any kind of federal financial assistance after October 1, 1990. The following information presents the five requirements as outlined in the federal law and the college response to each requirement. Questions regarding the information in this statement should be addressed to the Office of Student Life in Craig-Lee 127.

REQUIREMENT - Standards of conduct that prohibit the unlawful possession, use, distribution of illicit drugs and alcohol by students and employees on the school

property or as part of any school activity.


All students, employees, visitors, and guests (individuals) are prohibited from possessing, consuming, selling, or purchasing illicit drugs and/or alcohol * on the college property or as part of any school activity.

* Occasional exceptions to this policy which involve alcohol may be granted through the Director of the Campus Center.

Note: Generally, penalties are doubled for second offenses. If there is death resulting from these offenses, the penalties are increased. Marijuana violators are guilty of a misdemeanor and may be imprisoned for not more than one year or fined not less than \$200.00. Second and subsequent offenses of simple possession may impose penalties of community services and drug rehab. programs. R.I.G.L./ 21-28-4.01 (2).

See Drugs, p.11

Help Your Heart

American Heart Association 

Sex and Heart Disease

Thousands of Americans who experience heart disease, heart attack and heart surgery, face imposing challenges as they recover. New diet and exercise programs, new medications, or a general need to "take care of themselves" are typically easy to confront. But many patients return home facing another question: Does heart disease mean an end to a satisfying sex life? According to the American Heart Association the answer is "no."

The myths surrounding the idea of sex and heart disease are numerous. One of the most common is that sex often brings on a heart attack or sudden death. To the contrary, the American Heart Association says that the risk is very low. In fact, the physical demands of sex are mild and comparable to briskly walking up two flights of stairs.

There should be a short recovery period before resuming sex. Usually a patient can resume sexual activities within about four weeks after a heart attack or two to three weeks after leaving the hospital from heart surgery. The patient also should talk freely with his or her physician about resuming sexual activity.

If you have heart disease, have had a heart attack or undergone heart surgery, the American Heart Association suggests that you keep these important guidelines in mind:

- If you are not sure whether you're ready for sex, have your doctor give you an exercise test to check your physical capacity;
- Improve and maintain a good physical condition;
- Choose a time when you are rested, relaxed and free from the stressful feelings brought on by the day's schedules and responsibilities;
- Wait one to three hours after eating a full meal;
- Select a familiar, peaceful setting that is free from interruptions;
- Take medicine prior to sexual relations if prescribed by the doctor.

When you and your spouse feel comfortable and secure about your sex life, things should start to improve in other areas of your lives as well.

For more information, contact your nearest American Heart Association.

THE CHAPLAINS AT RHODE ISLAND COLLEGE Welcome the Class of 1994 and All New Students

Stop in so we can welcome you personally

Rev. Gail Wheelock

Sister Mary Rossi, CND

Protestant Chaplain

Catholic Chaplain

Student Union Room 300

X8168

SPORTS

Spike-it season
arrives!

by Kristen Del Bonis
Anchor Editor

force at the net when it comes to blocking and hitting." Sweet's other strong points include serving and bringing quality leadership to her team.

It isn't any surprise that Jen Schulte knows her game. McDermott went on, "she is a good hitter with strong blocking skills." Jen Nolan has also gotten her coach's attention this season. After taking last season off, "Jen Nolan is a much improved player and has worked very hard in the pre-season to earn her starting position on the floor."

Other veterans also returning to the net, will be Tantha McNulty and Denise Courtemache. Some new faces to the Women's Volleyball team will include freshman, Michelle Pouliot, who will be filling the team's vacancy as a setter.

Sophomore transfer, Jamie Murray, along with Missy Bruhle, Zina Mowre, and Christine Lambert will also contribute to the fire.

The team played their first game on Sat., Sept. 8, against Stonehill College. Although they suffered a loss, the team kept a positive "never say die" attitude. They pulled together and came back against a good lead in the second game. The game scores were 3-15, 7-15, 11-15; Stonehill being the victor. On Wed., Sept. 12, the team traveled to the University of New Haven and lost. Jen Schulte and Jen Nolan both hit the ball extremely well to try and save the game but New Haven was just too powerful.

The next home game for the Anchorwomen will be on Sat., Sept. 22 against Worcester State College at 1:00p.m. in Walsh Gymnasium.

Oh yes!! It's that time of year again. While most of us were enjoying the last warm rays of the summer sun, the Women's Volleyball team started preparing for their season four weeks ago. Seventh year Head Coach Kris Norberg hopes to better last years record of 20-10.

And guess who's back? Middle hitters Jen Schulte and Lisa Sweet returned to the net after taking a year off. Along with Sweet and Schulte, junior setter Andrea Nelson will lead the anchorwomen as Tri-Captains this season.

Second year Assistant Coach Jim McDermott speaks of his tri-captains. "This is Andrea's third year. She is a talented setter who is becoming more of a leader. We are looking for Andrea to run our office effectively."

McDermott described Sweet as a "big

Sports Information Director
resigns

by Kristen Del Bonis
Anchor Editor

Dave Kemmy, Sports Information Director here at Rhode Island College resigned on Tuesday, September 4, 1990. After contributing six years to the athletic program as S.I.D., Kemmy will move on to take the position of Director of Sports Information and Recreational Services at Roger Williams College in Bristol, Rhode Island. He graduated from Rhode Island College in 1985. While a student here, Kemmy worked as an undergraduate for the athletic program in August of 1984 and also took the titles of Executive Editor and Sports Editor for the Anchor.

He remembers first starting out as S.I.D. here. "The program has come along way since then." Kemmy has been responsible for turning out accurate statistics for every athlete, along with the printing of fall and spring schedules, game programs, and sports news releases.

Kemmy will continue his third year here

as Head Coach of the Men's Soccer Team. "I do not want to leave the soccer program unless I have to. I really like the team's attitude."

Kemmy's duties at Roger Williams College will include running budgets for the athletic department, as well as directing all sports information. He will also be dealing with the Recreation and Intramural programs.

Last year Kemmy produced the school's second best record in thirty-one years for the Men's Soccer Team with eleven wins and seven losses. The team also took its first trip ever to Pennsylvania at the beginning of the semester.

One area of interest to Kemmy is that of someday becoming Athletic Director. But for now Kemmy seems to be content with his career. In closing, Kemmy remarked about what he will leave behind. "Rhode Island College will always be important to me. I have enjoyed working with the coaches, students, and athletes."

Soccer Preview



The Anchormen beat Bryant College, 3-0, on Wednesday, Sept. 12th, home game.

-photo by Jeff Damiano

by Marc Brocato
Anchor Staff Writer

This year, the Men's Soccer Team had to do some serious sweating off the field before they could even start playing.

The squad pooled their efforts together during the off season by holding fundraisers to gather enough money to travel to Pennsylvania this past Labor Day weekend. The team participated in the Scanton University Soccer Tournament.

It turned out to be a great experience for third year coach Dave Kemmy and his freshmen/sophomore Division III team.

On September 1, they played their first game against Division II Longwood College and suffered a 3-0 loss. The game was much closer that the score might indicate. RIC only trailed 1-0 after sixty minutes of play. But Longwood struck the Anchormen with two driving goals within the last fifteen minutes to account for the 3-0 final score.

After the loss, Kemmy was upbeat. "They were a tough Division II team, so we weren't expected to win anyway," he explained. "So, I was happy with the way they played".

The next game pitted RIC against the Merchant Marine Academy. This time, it was the Anchormen who recorded the shutout, 2-0, as they left the tournament on a positive note.

While his young team did not come away with both wins, Kemmy states that, "It was a good trip. The team got some good experience."

On September 4, the Anchormen headed home to take on Nichols College and came away with their second straight win, 2-1 as Fernando Silvestre booted home the winning goal in overtime. With eighteen freshmen and sophomores filling a twenty-five man roster, they played like a bunch of tested veterans as they dominated the game from the opening whistle, shooting out Nichols, 40-12.

The game however, characterized a problem the team had encountered earlier, not capitalizing on scoring opportunities. Senior Tri-Captain Tom Cafaro explained, "We have trouble pulling the trigger when it is time to put the ball in the net. So at times we end up dominating a game but have nothing to show for it."

Kemmy noted that their strengths this year extend "right down the middle of the field." Keeper Frank Kowalik is back for his third year and is one of the stingiest netminders in the Little East.

Junior Tri-Captain Fred McNulty, and sophomores Tony Barros, Joe Luzzi, and Fernando Silvestre are also relied upon heavily to anchor the team from the middle.

Some newcomers hoping to have an impact include midfielder Ricky Uth who is a former All-Stater from Warwick Vets High School. Kemmy describes him as being "big and strong with good abilities and technique."

The coach noted that a little work on his shooting may turn Uth into a prominent player for the squad.

Forward Remi Fluette, a former All-Stater from Mt. St. Charles is also contributing to the team nicely and getting praise from his coaches, as Kemmy stated, "Fluette is one of the best conditioned athletes we have who really pushes himself hard in practice."

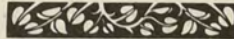
Rounding out the list of hopefuls includes Joe Vieira from Bristol who has "surprised the team with his abilities," and Carlos Olivieras from Warren.

The squad avenged a loss from last year by beating Bryant College on Wed. Sept. 12. The team shut out the Indians 3-0 with goals by Jose Martins, Joe Coelho, and Derek Thayer.

The Anchormen will be in action on our home field on Sept. 23, hosting Westfield State College, along with Stonehill College on the 26th of September.

It keeps
more than
memories
alive.

THE AMERICAN HEART
ASSOCIATION
MEMORIAL PROGRAM



WE'RE FIGHTING FOR
YOUR LIFE

American Heart
Association



This space provided as a public service.

We need you.

WE'RE FIGHTING FOR
YOUR LIFE

American Heart
Association



What's Happening

Maggie Gordon
Anchor Editor

COMEDY CAFE



EVERY MONDAY NIGHT
IN THE COFFEEGROUND

Admission
is FREE!

Hosted by Ed DelGrande
Featuring three Boston Comedians
From 9:00 pm 'til the laughs stop!!

SPONSORED BY "RIC PROGRAMMING"

Tuesday, 18

Hey my little munchkins, we're back! Can you stand the excitement of it all? Harsh reality! Who are you kidding, this is the best time of your lives! To all you new students, let me introduce myself...this is my section, and in this spot over the semester you will find out what is happening. It's relatively easy to find...its located in the spot marked "What's Happening"—doesn't take a brain surgeon.

Did all my new student munchkins get their passports? No, we're not going on a field trip to Paris. It's the **New Student Program**—developed to help you get the most of your "college experience." Kind of like *Frat Parties?* No. Today's program is "Find Out How to Find It". If you need a program to tell you how to find some, you really don't need any. Did I say that? Really...it's an orientation to our fine library system. The program is free. 12 noon in Adams Library. The grand tour begins at the reference desk. That's right on your left as you walk in.

Today and tomorrow are the **Security + Safety Days—a Campus Watch** consisting of many informative workshops -if you need an escort to or from any of the programs on our safe campus, be sure to contact WXIN. Get ready kids...here it is: You too could be caught by the FBI. Get over to Brown Hall between 7-11am today to get fingerprinted. It's free. **Tips for Travelers** is a workshop that will be taking place in SU (that's "Student Union")304 at 2:00pm and will show students, faculty, etc. how to go on vacation, ride public transit, and get home at night without being killed or anything. An overview of **Crime Prevention** will be given in SU 305 at 3:00pm and will be presented by East Providence Police Dept. Crime Prevention Officer and President of the RI Crime Prevention Officers Association, Roland Grant. The **Substance Abuse** program takes place in SU 305 at 4:00pm and deals with recognizing drug/alcohol abuse, and what your

role is as the parent, child, friend, etc. Brown Hall Lounge is the location of the program **Campus Crime Awareness**. Be there at 6:00pm. Right after that, a presentation that should not be missed, **Rape Awareness**, in Brown Hall Lounge at 7:00pm. And that's it. Until tomorrow, at least.

Focus program is **Job Search** sponsored by the office of Career Development.

The **Providence Performing Arts Center** presents **Fiddler on the Roof** tonight through Sunday. Call 421-ARTS for information.

Wednesday, 19

Student Film Society Screening tonight in Horace Mann room 193, general admission is \$2., but for those of us with a RIC ID it's only \$1. This screening is sponsored by the Fine and Performing Arts at RIC.

Get your beach chairs, and get ready to see **Pretty Woman** outside the Coffeeground at 8pm. Free admission, popcorn and hot dogs. This was before Julia cut her hair, so it's not false advertising...the movie was filmed when Julia was, indeed, a pretty woman.

In case you missed it yesterday, some of the programs in the Campus Watch Safety Days are being repeated such as: **Tips For Travelers** at 10:00am in SU 305; The program on **Rape Awareness** is in the Brown Hall Lounge at 11am. **Substance Abuse**, how to cope with it, that is, will be presented in SU 305 at 1pm. On the mall at 12noon until 2 you can catch a **Self Defense Demonstration**. Other programs include: **Campus Crime Awareness**: Brown Hall Lounge, 6pm; **Crime Prevention**: SU 305, 2pm; **Auto Anti-Theft Demonstration**: on the Mall 12-2pm.

Seniors, make sure not to miss the **Senior Orientation** workshop in CL054 at 12pm., sponsored by Career Development.

Thursday, 20

For all those who plan to graduate and get any kind of real job, you'd better get over to **Resume Workshop** sponsored by **Career Development**. It's from 12-1 in CL 054.

PPAC continues its presentation of **Fiddler on the Roof**. Call 421-ARTS for info.

Wickenden Gate Theater presents **Laughing Wild**, its first production of the 90-91 season. Performance time is 8pm. Tix are \$10. Call for info: 421-9680.

There's no keeping a good club down. Get over to **ROCKET**...oops...I mean **Club Baby Head**, on Richmond Street, Providence. There's no cover before 10, and every night is 18+. Gosh they're beautiful. And to think we came so close to losing our **Stupid Dance Parties**, with DJ Grizzly!!!

Friday, 21

Tonight's a night for all you "theater buffs". Providence Performing Arts Center continues its run of **Fiddler on the Roof** tonight. Call them at 421-ARTS for information such as curtain time and ticket price.

If you've already seen the Fiddler, you may want to get over to **Matthewson Street** and see **Wickenden Gate Theater's Laughing Wild**. Tix are \$10, and you can call them for other info at 421-9680.

Saturday, 22

Are you wanted by the police, a jilted lover, riled up parents? Need to get out of town for the day? Get on the **Bus Trip to Great Adventures** sponsored by RIC Programming. The bus leaves the Student Union at 8am and won't return until 1am. Get your tickets for this in advance at the Info Desk.

If you haven't seen it yet, get over to the PPAC to see **Fiddler on the Roof**.

Wickenden Gate Theater continues its presentation of **Laughing Wild**. Tickets are \$10. The phone # is 421-9680.

Slater Mill will be presenting guided tours of the site every Saturday and Sunday from 1-5pm through December 16. Admission is \$3. for adults, \$2. for children 6-14 and seniors, and kiddies and really truly short people are free.

Catch Physical Graffiti—patron saint of cover bands at the Living Room, Promenade Street, Providence. For info., call 521-2520.

Sunday, 23

Kiddie Carnival today, sponsored by the Campus Center. Bring a friend's kid so you don't look like a fool. You probably will anyway, but it'll be much less conspicuous. **Fiddler on the Roof**—still at the PPAC, whose phone # is still 421-ARTS.

RISD presents **Suitable for Deframing**. Brett Rutherford and Pieter Vanderbeck read some poetry in RISD's first poetry reading of the season.

Providence Zen Center sponsors a One Day Meditation Retreat. Talk and instruction,; siting, walking, chanting, and bowing meditations. There is a vegetarian buffet. It's from 9am to 4pm and it's \$35. (but for us, i.e., full-time college students it's only \$22.) Advance registration is required. Call 658-1464 for more info.

It's the Eighth annual Bud Light "Chowda Fest" for Horizons for Youth. The event takes place from 12 noon to 6pm at the Charleston Navy Yard. Admission is \$6. for adults; \$3. for children under 12 and senior citizens. For more information call (617)828-7550.

Steve DuBois and the Portugese Around Us play at the Custom House tonight at 9. Cover is \$3. Bring your ID. The Custom House is located at 36 Weybosset Street, and the # is 751-3630.

Finally legal, after all this time, **WBRU** turns 21. Celebrating their birthday bash at the Living Room.

42nd Street Sounds

Professional Sound Systems and Lighting Systems

RENTALS- SALES

DJ'S Available

Private parties - Weddings - Proms
Indoor and outdoor functions

50's - 60's - 70's - 80's music

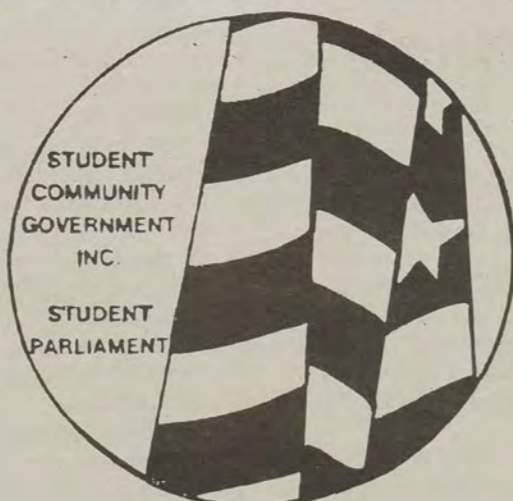
Specializing in
Dance and Hip Hop music

(401) 521-6552

COPY SERVICE:

HOURS-10 to 2pm
Cost-5¢ per copy
DITTO MACHINE:
Masters-5¢ each
Paper - 2 sheets for 1¢

TELEPHONE 456-8088
OFFICE HOURS 9 to 3:30



POSTAGE:

Postage Scale
Mailing Machine
(organizations only)

NOTARY PUBLIC:

FREE Notary Pubic Service
See: Gen Bellucci

WE'RE WORKING FOR YOU

LEGAL ADVICE:

Jack R. Degiovanni, Jr.-Attorney
Hours: Every Wednesday
12:30 to 2:00pm
By Appointment - 456-8088

HAVE A COMPLAINT????

Call: 456-8088
CONDITION & SERVICES COMMITTEE
is working for you

STARTING A NEW CLUB????

Info Provided For New Clubs
See: Sharon Kelly, Chairperson
STUDENT ORGANIZATION COMMITTEE

STUDENT PARLIAMENT:

GET INVOLVED
For further information
Call: SALLY- 456-8088

BE THE STUDENTS' VOICE
Parliament Vacancies:

- 3 seats in Constituency I (Humanities)
- 3 seats in Constituency II (Math/Sciences)
- 2 seats for Graduate Students
- 1 seat for Performance Matric
- 1 seat at large Affirmative Action
- 5 seats in Constituency III (social sciences)
- 2 seats in Constituency IV Dorms

The Campus Center would like to welcome you back for a year of fun and excitement!!
Watch for up-coming events in the Campus Center Anchor ad.



F.O.C.U.S.

Security and Safety Days
presents:
"Substance Abuse"
Tuesday, September 18th, 4pm. in SU305
Wednesday, September 19th, 1pm. in SU305

Security and Safety Days
presents:
"Crime Prevention"
Tuesday, September 18th, 3pm. in SU305
Wednesday, September 19th, 2pm. in SU305
presented by Roland Grant

Security and Safety Days
presents:
"Tips for Travelers"
Tuesday, September 18th, 2pm in SU305
Wednesday, September 19th, 10am in SU305
presented by Russell Hall

Outdoor movie:
PRETTY WOMAN
Wednesday, September 19th
8pm. outside Coffeeground

Sunday Night Movie:
Hard To Kill
Sunday, September 23rd
8pm. in Video Den

Kiddie Carnival
Saturday, September 23rd
12-3pm. on Weber beach

Last year it was a big success...
This year...let's join together
to make it even more successful!!
Participate in...
AEROBICAID '90
Sunday, September 30th
1pm. in front of Walsh
Come Join The Fun!!
*If you would like to volunteer to help,
please contact Kristen King at x8538

The Campus Connection

The first meeting of the **Social Justice Studies Club** will be Wednesday, September 19, during the free period. This meeting will offer a good opportunity for students to get acquainted with others in their major. The club has a lot planned, and invites anyone interested to stop by.

The **Recreation Center** has announced its fall Intramural Programs. Basketball, volleyball, 'clinchball', and 3-on-3 basketball games are all scheduled to run Monday through Thursday nights. Deadline for registration for the teams is 12 pm on September 17. For further information, contact the Recreation Center at x8400.

"Find Out How to Find It" is the title of a tour being given at **Adams Library**, Tuesday September 18, at noon. Discover the basic tools of research, where to find them and what to do with them in this personal tour of the library.

The **Accounting Club** will meet Wednesday, September 19, in Craig Lee room 53. This meeting will familiarize students with the club and upcoming events will be discussed.

AIESEC, the international association of students in economics and business management will hold their first meeting September 19, in Alger Hall room 206 at 12:45. This is the "new members" meeting and all students are invited.

Contests

National College Poetry Contest is open to all college and university students desiring to have their poetry anthologized. Cash prizes will be awarded to the top five poems. Deadline: October 31. For Contest Rules, send stamped envelope to: International Publications, PO Box 44044-L, Los Angeles, CA 90044.

American Poetry Association

Santa Cruz, CA— The deadline for the American Poetry Association's contest is September 30. The contest is open to everyone, and entry is free. The Grand Prize is \$1,000, and the First Prize \$500. There are 152 prizes worth \$11,000 in all.

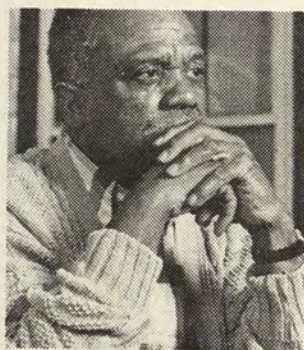
"Every student who writes poetry should enter this contest. The judges look for new and unknown poets, and students often win," said Robert Nelson, publisher for the association. "You don't have to be a professional poet. Your sincerity, originality and feeling are what judges look for."

Poets should send one original poem, no more than 20 lines, name and address on the top of the page, to American Poetry Association, Dept. CO-84, 250-A Potrero St., P.O. Box 1803, Santa Cruz, CA 95061. Entries must be postmarked by September 30. A new contest opens October 1.

Each poem is considered for publication in the *American Poetry Anthology*, a treasury of current verse.

Entrants receive the "Poet's Guide to Getting Published," a four page booklet full of information every poet needs to know.

The American Poetry Association has sponsored poetry contests for 8 years and has awarded \$200,000 in prizes to 3,400 poets.



He wants to do his taxes but he finds it too difficult to hold a pencil.

Without your help, he may not be able to do them.

Almost everybody has to file taxes, but not everyone can do it on their own. Volunteer and help make someone's taxes less taxing. Call 1 800 424-1040.

A Public Service of This Publication & Ad Council Internal Revenue Service

Drugs

continued from p.11

DISTRIBUTION Imprisonment not more than 1 yr. & a fine not less than \$10,000, or both - R.I.G.L. 21-28-4.01

Anyone 18 or older distributing to anyone under 18 who is at least 3 yrs. his junior, shall be imprisoned not less than 1 yr. and fined not more than \$10,000, or both - R.I.G.L. 21-28-4.07 (c)

NOTE: Anabolic steroids prescribed by a practitioner for the purpose of increasing mass, strength or weight without a medical necessity, is a misdemeanor and may carry imprisonment for not more than 6 months or a fine of not more than \$1,000 or both.

* Schedule V Drugs: Including but not limited to drugs with limited amounts of narcotics, testosterone and human growth hormones (HGH)

6. DRUG STATE LAW

Alcohol, Violations for those under 21

USE
First offense - \$100 fine
Second offense - \$200 fine
Third offense - \$500 fine
R.I.G.L. - 3-8-6 (d)

POSSESSION
First offense - \$100-\$500
Second offense - \$200-\$500
Third or subsequent - \$300-\$500
R.I.G.L. - 3-8-10

SALE to minors
First offense - \$250
Second offense - \$500
Third and subsequent - \$750
R.I.G.L. 3-8-5

DISTRIBUTION First offense - fine not less than \$250 or more than \$1,000 or imprisonment not more than 6 months or both.

Second offense - fine not less than \$750 or more than \$1,000 or imprisonment not more than 6 months or both

Third and subsequent - fine of \$1,000 or imprisonment not more than 6 months or both - Any person convicted of a third or subsequent offense shall not have any fine suspended - R.I.G.L. 3-8-11.2

REQUIREMENT - A description of the health risks associated with the use of illicit drugs and the abuse of alcohol.

The health risks associated with the use of illicit drugs and the abuse of alcohol include the possibility of hangovers, nausea and vomiting, tremors, sexual impotence, cardiovascular damage (including high blood pressure, deterioration of heart muscle, heart failure), respiratory failure, injury through loss of motor coordination, injury through violence or deliberately self-destructive behavior, depressed immune system, or memory impairment.

Because alcohol is a depressant drug, it ultimately slows down activities of the central nervous system - heart rate, pulse, and respiration. Continued drinking interrupts the brain's chemical and electrical circuitry and causes behavioral changes. The brain begins to malfunction, affecting the individual's psychological and emotional state as well as the ability to think, make judgements, see clearly, speak with out slurring words, sit or walk without slurring words, sit or walk without wobbling or falling, and do mechanical tasks, like drive a car. When blood alcohol concentrations become very high, the brain's control over the respiratory system may fail, the body may lapse into a coma, the heartbeat may slow, and death may follow.

REQUIREMENT - A description of any drug or alcohol counseling, treatment, or rehabilitation or re-entry programs that are available to students or employees.

Rhode Island College participants in the Rhode Island Employee Assistance Program (RIEAP). This program is a confidential source of help for all employees and their dependents who are having personal problems that include the use of illicit drugs and abuse of alcohol. Referral is available through Program Advisors, the Program Coordinator, the College Personnel Office or by calling one of the RIEAP offices directly. The College health medical plan provides coverage for counseling and treatment services.

When the college administration experiences situations in the workplace which are related to drug use or drug abuse the college will take a proactive position with regard to direct intervention towards elimination of the problems.

Students may seek help with a drug or alcohol problem through a variety of offices on campus: Chaplains, Counseling Center, Health Services, Health Promotion, and Student Life. Any student may be referred for evaluation, counseling, treatment and/or rehabilitation either from a self-referral or as part of a sanction for violation of college regulations that was caused, in part, by the use of drugs or alcohol.

REQUIREMENT - A clear statement that the school, consistent with local, state, or federal law, will impose sanctions against a student or employee who violates the standard of conduct.

The College is not, and cannot be, a sanctuary. As a public institution of Higher Education its members are governed by civil law and especially the laws of the State of Rhode Island. Illegal activity by students or employees, whether on or off campus, subjects the individual to prosecution by civil authorities. In addition, the student or employee is subject to disciplinary action by the College when its special interests (e.g., the health and safety of its members, College property, and its educational programs) are jeopardized. Students or employees found guilty are subject to sanctions that may include: censure, rehabilitation program, expulsion from College, termination of employment, and/or charged by the institution to the authorities for prosecution.

Biennial Review

Rhode Island College will conduct a biennial review of its drug and alcohol abuse prevention program to determine the program's effectiveness.

This review will have two primary goals: (1) to ensure that any sanctions imposed pursuant to the program are consistently enforced; and (2), to evaluate whether any changes are needed in the program and to implement such changes.

ON-CAMPUS NEWSPAPER SUBSCRIPTIONS FOR:

The New York Times
The Providence Journal
The Boston Globe

Sign up now to get the best savings!

Student Union Information Desk
Monday-Friday 8:30-4:30

You're smart enough to calculate the size of a Hydrogen atom.

And you're still smoking?

U.S. Department of Health & Human Services

Drugs

continued from p.6

1. DRUGSTATE LAW

Heroin and other Schedule I Drugs* excluding marijuana

USE Imprisonment not more than 30 yrs. & a fine not less than \$100,000, or both - R.I.G.L. 21-28-4.01

POSSESSION
(constructive) Imprisonment not more than 3 yrs. & a fine not less than \$100,000 or both - R.I.G.L. 21-28-4.01.POSSESSION
(simple, unlawful) Imprisonment not more than 30 yrs. & a fine not more than \$500.00, or both - R.I.G.L. 21-28-4.01

SALE Imprisonment not more than 30 yrs. & a fine not more than \$100,000, or both - R.I.G.L. 21-28-4.01

DISTRIBUTION Imprisonment not more than 30 yrs. & a fine not more than \$100,000, or both - R.I.G.L. 21-28-4.01

Anyone over 18 distributing to anyone under 18 who is at least 3 yrs. his junior shall be imprisoned to a term not less than 15 yrs. and fined not more than \$500,000, or both - R.I.G.L. 21-28-4.07

* Schedule I Drugs : Including but not limited to codeine, morphine, LSD, peyote, mescaline, some depressants and some stimulants.

2. DRUGSTATE LAW

Cocaine and other Schedule II Drugs*

USE Imprisonment not more than 30 yrs. & a fine not more than \$100,000, or both - R.I.G.L. 21-28-4.01

POSSESSION
(constructive) Imprisonment not more than 30 yrs. & a fine not more than \$100,000, or both - R.I.G.L. 21-28-4.01POSSESSION
(simple, unlawful) Imprisonment not more than 3 yrs. & a fine not less than \$500.00, or both - R.I.G.L. 21-28-4.01 (1) (a)

SALE Imprisonment not more than 30 yrs. & a fine not more than \$100,000, or both - R.I.G.L. 21-28-4.01

DISTRIBUTION Imprisonment not more than 30 yr. & a fine not more than \$100,000 or both - R.I.G.L. 21-28-4.01

Anyone over 18 distributing to anyone under 18 who is at least 3 yrs. his junior shall be imprisoned to a term not less than 15 yrs. and fined not more than \$500,000 or both - R.I.G.L. 21-28-4.07

NOTE: Generally, penalties are doubled for second offenses. If there is death resulting from these offenses, the penalties are increased. Second and subsequent offenses of simple possession may include penalties of community service and drug rehab. programs - R.I.G.L. 21-28-4.01 (2).

*Schedule II Drugs: Including but not limited to opium poppy and opium straw, coca leaves, some depressants and some stimulants, certain hallucinogenic substances.

REQUIREMENT - A description of the applicable legal sanctions under local, state or federal laws for the unlawful possession or distribution of illicit drugs or alcohol.**3. DRUG**STATE LAW

Amphetamines, barbituric acid and other Schedule III drugs *

USE Imprisonment not more than 20 yrs. & a fine not more than \$40,000, or both - R.I.G.L. 21-28-4.01

POSSESSION
(constructive) Imprisonment not more than 20 yrs. & a fine not less than \$40,000, or both - R.I.G.L. 21-28-4.01POSSESSION
(simple, unlawful) Imprisonment not more than 20 yrs. & a fine not less than \$500.00 or both - R.I.G.L. 21-28-4.01 (1) (a)

SALE Imprisonment not more than 20 yrs. & a fine not more than \$40,000, or both - R.I.G.L. - 21-28-4.01

DISTRIBUTION Imprisonment not more than 20 yrs. & a fine not more than \$40,000, or both - R.I.G.L. - 21-28-4.01

Anyone 18 or over distributing to anyone under 18 who is at least 3 yrs. his junior shall be imprisoned not less than 5 yrs. and fined not more than \$40,000 or both - R.I.G.L. 21-28-4.07 (b)

NOTE:

* Schedule III Drugs: Including but not limited to stimulants like amphetamines, methamphetamine, barbituric acid, phenobarbital and limited quantities of narcotics.

4. DRUGSSTATE LAW

Barbitol and other Schedule IV Drugs *

USE Imprisonment not more than 20 yrs. & a fine not more than \$40,000, or both - R.I.G.L. 21-28-4.01

POSSESSION
(constructive) Imprisonment not more than 20 yrs. & a fine not more than \$40,000, or both - R.I.G.L. 21-28-4.01POSSESSION
(simple, unlawful) Imprisonment not more than 3 yrs. & a fine not less than \$500.00, or both - R.I.G.L. 21-28-4.01 (1) (a)

SALE Imprisonment not more than 20 yrs. & a fine not more than \$40,000, or both - R.I.G.L. 21-28-4.01

DISTRIBUTION Imprisonment not more than 20 yrs. & a fine not more than \$40,000, or both - R.I.G.L. 21-28-4.01

Anyone 18 or over distributing to anyone under 18 who is at least 3 yrs. his junior shall be imprisoned not less than 5 yrs. and fined not more than \$40,000, or both - R.I.G.L. 21-28-4.07 (b)

NOTE:

*Schedule IV Drugs: Including but not limited to methylphenobarbital, phenobarbital and barbitol derivatives.

5. DRUGSTATE LAW

Limited Quantity Narcotics & other Schedule V Drugs*

USE Imprisonment not more than 1 yr. & a fine not more than \$10,000, or both - R.I.G.L. 21-28-4.01

POSSESSION
(constructive) Imprisonment not more than 1 yr. & a fine not more than \$10,000, or both - R.I.G.L. 21-28-4.01POSSESSION
(simple, unlawful) Imprisonment not more than 3 yrs. a fine not more than \$500.00 or both, except for marijuana - R.I.G.L. 21-28-4.01 (1) (a)

SALE Imprisonment not more than 1 yr. & a fine not less than \$10,000, or both - R.I.G.L. 21-28-4.01

See Drugs, p.10

ATTENTION FRESHMEN: FRESHMEN CLASS ELECTIONS

DATE: WEDNESDAY, SEPTEMBER 19th

Time: 10 am - 4 pm

Place: Student Union, 2nd Floor
(top of stairs)

*If you are a Freshmen and are interested in
getting involved with your freshmen class
activities and student government,
run for office!!*

PRESIDENT
VICE-PRESIDENT

SECRETARY
TREASURER

Also 3(three) Freshmen class seat vacancies
on Student Parliament

Declare your candidacy by signing up in the
Parliament Office, Room 200 second floor
Student Union.

DEADLINE FOR DECLARING CANDIDACY:

12 NOON, MONDAY SEPTEMBER 17, 1990

(NO EXCEPTIONS)

*For more information contact Marco Schiappa in the
Student Parliament Office*

456-8547/8088

EDITORIAL

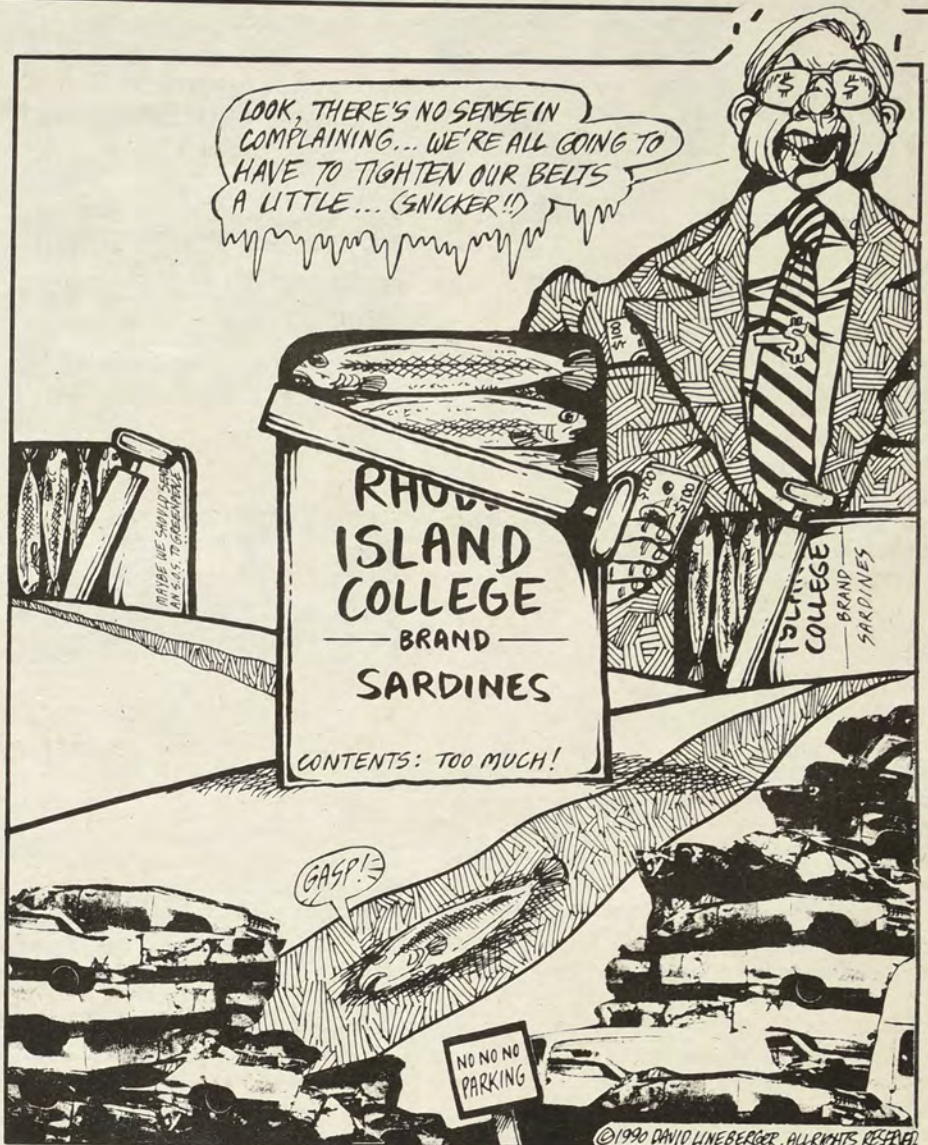
Yes, It's Back: The Parking Problem

Just when you thought the problem was over, it has hit the campus again - Parking.

Every year the parking problem on campus gets worse. Last year, we had the largest class of freshmen and transfer students (1,951) to come into the college. This year we have an even larger class. There are about 2,151 incoming freshmen and transfer students, 200 more than last year. It was tough enough last year trying to find a parking spot, what about this year with the largest freshmen class coming onto campus? There are no new parking lots to fit the students so they end up blocking other cars, or park on Mt. Pleasant and Fruit Hill Ave. Now there are more traffic delays on Mt. Pleasant and Fruit Hill Ave., which is causing problems not only for the campus but also local traffic.

The rugby team can't even practice on their field these days because it is being used as a parking lot. Security is going crazy trying to fit cars on the campus grounds. This is also making it tough for our students who are handicapped. People with no disabilities are taking their spots. To top things off, a new dorm is being built. Once it's built, where are these students going to park?

It has been suggested that students can car pool or take the bus to school but most students who go to this college have to work after their classes. This makes it tough for students to car pool or take the bus to school. The best solution to these problems is to **build a new parking lot**. We don't want to lose our new students just because there is no parking to be found on campus.



"BUSINESS AS USUAL, AS USUAL."

PROMOTIONS BY

**UP...
UP..
& AWAY**

"Everything You Need To Succeed"

Custom Banners & Signs, Interior & Exterior Decorating, Screen Printing & Custom Inprintables, Promotional Balloons & Inflatables From 9" to 30 Feet. We Also Provide TOTAL Promotional Packages & Custom Made Point-Of-Purchase Displays.



**For More Info Call
Jack Falvey or
Bob Arruda
(401) 354-8888**



**4-Beam Tracker
Searchlights
Now Available**

"WHEN I GO SHOPPING, I BUY LETTUCE, SO I CAN SUPPORT MY FETUS FETISH!"

-S.S., 1985:
"POEMS THAT PROVE I'M NOT AN AIRHEAD!"

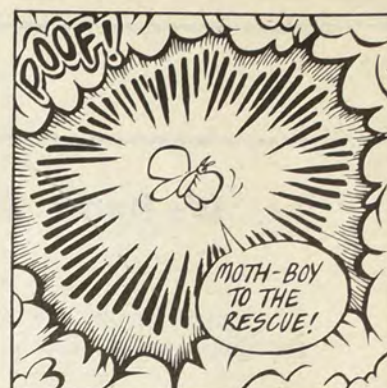
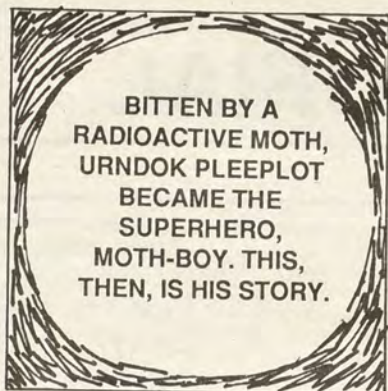


-AN APOLOGY-

Cheese's Spread would like to take this opportunity to apologize to everyone offended by the cartoon printed in the summer issue of *The Anchor*. By no means did we mean to offend pro-lifers, pro-choicers, pro-abortionists, anti-choicers, and people with no opinions at all, but have something to say anyway.

Because of the nature of the cartoon, the summer issue of *The Anchor* was not included in the incoming Freshman class student orientation package. For the benefit of the new students' parents, who have been wondering since day one if sending them to the Rhode Island College Plantation was a wise decision, *Cheese's Spread* would like to take this opportunity to describe the aforementioned very rude and vulgar disgusting perverted comic in vivid detail.

Remember pet rocks? And "sea monkeys?" Well, once upon a time, there was a fad called the "Wear-A-Pet," which was a tacky little necklace that had a vial of water on the chain. Inside the vial was a tiny living sea creature, a brine shrimp (AKA "Sea Monkey"). The cartoon in question was a satire on dumb fads like these, and it was called "Wear-A-Pet '90." Inside the vial of this necklace, however, was an aborted fetus, with a cute smile on its tiny, bloblike head, and 2 little "X" marks for the dead thing's eyes. Part of the umbilical cord was still attached, severed partway up, and floating in the water were micro-flakes of dead, rotting, gangrenous flesh that basically looked like, well, little black specks. The caption read: "Wear-A-Pet '90 allows you to enjoy all the joys of parenting with none of the hassels! No morning sickness, no labor pains, no dirty diapers, no screaming babies, no nothin'. Wear your aborted fetus around your neck proudly. Or, if you can't,



wear a donor's aborted fetus. Guaranteed to provide you with hours of enjoyment!" Below the writing were three identical copies of the very same "Wear-A-Pet" illustration, although they were separately labeled "Sit," "Heel," and "Play Dead." See, they're dead, right? THEY DON'T DO ANYTHING. Personally, I thought it was hilarious. But then, I still make pretend flatulence noises at parties, so what do I know?

Once again, we deeply regret our crossing the line from no taste to bad taste. Furthermore, *Cheese's Spread* wants to assure you that, in the future, we shall never ever print offensive cartoons like this one:



"FEMME FETALLE"

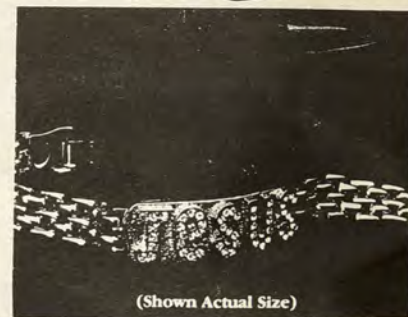


TROY AIKMAN:
First victory.

Our hearts go out to Dallas Cowboys Quarterback Troy Aikman, whose recent photo in the *Providence Journal-Bulletin* confirms the rumors that his face is slowly being eaten by a strange, extra-terrestrial fungus. Sorry, guy. But look on the bright side: uh... um... Gosh, I guess there ISN'T any bright side, is there? Sorry, guy.



Tom Jones



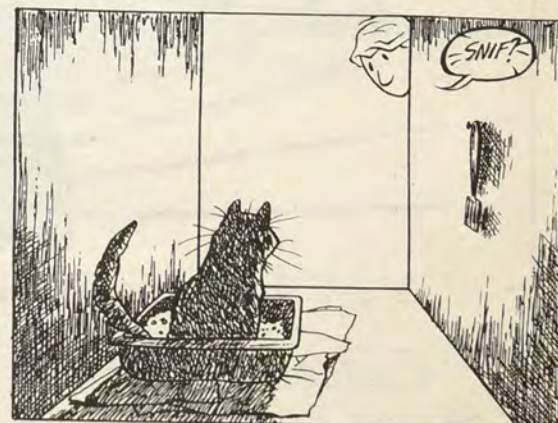
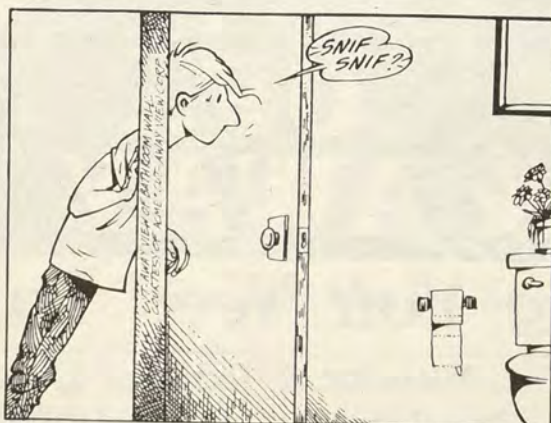
(Shown Actual Size)

Sparkling Link Bracelet Identifies Who You Belong To As A Child Of God.

This seven-inch-long bracelet, electroplated in real 14K gold, is lightweight and can be worn with almost any outfit. One of the outstanding features of this exclusive bracelet is the name of Jesus formed in raised letters on the face and traced in brilliant rhinestones. The flexible chain bracelet is held together by a locking clasp for your added security. This bracelet makes a beautiful and lasting gift. Jesus Bracelet (25-050) \$25

ATTACK OF THE LAUGHING POLYPS, PT. II by David Lineberger

At least one out of every 100 insects is an ant.



© 1990 DAVID LINEBERGER

POP CULTURE BEAT

MOVIES

Current Showings

MO BETTER BLUES (R)

Denzel Washington - Drab tale of self-centered jazz trumpeter with women problems. (Fair)

MY BLUE HEAVEN (PG-13)

Steve Martin - New York gangster suffers boredom of witness protection program; so does audience. (Fair)

PRESUMED INNOCENT (R)

Harrison Ford - Crackerjack who-dunit about a prosecutor on trial for murdering his colleague. (Great)

PROBLEM CHILD (PG)

Michael Oliver - Silly clap-trap about misbehaving tyke; sledge-hammer humor does not deliver. (Boring)

TAKING CARE OF BUSINESS(R)

James Belushi - So-so mistaken identity comedy of thief who assumes executive's lifestyle. (Fair)

THE TWO JAKES (R)

Jack Nicholson - "Chinatown" follow-up beset with exhausting, complicated plot. (Fair)

WILD AT HEART (R)

Nicholas Cage - Audacious comedy-road movie of young lovers on the lam; shocking and funny. (Good)

YOUNG GUNS II (PG)

Emilio Estevez - Bratpackers in saddle again for thin sequel about Billy the Kid. (Fair)

Coming Attractions

Neil Simon has written the original screenplay for "The Marrying Man," a Buena Vista Release.

Alec Baldwin and Kim Basinger will star in the film about a Hollywood millionaire who tries to seduce a Las Vegas lounge singer.

Research works.

American Heart Association



a unique boutique

Sentimental Journey

new • selective pre-owned • vintage
quality women's clothing
hats
jewelry
& more ...

sizes petite to 18+

including many designer & better labels

Rentals from the 1920's - 60's, too.
Come see!

Visit me at my new location

1085 Chalkstone Avenue • Providence

Tue.-Sat. 10-5 Sun. & Mon. by Appt. 421-6005

Consign by appt.

New Releases

DARKMAN (R)

This clever horror thriller of revenge from Sam Raimi is finally undone with conventional super-hero feats, chases and heavy gunfire. Liam Neeson is good as a disfigured scientist who uses synthetic skin to transform his face into the likeness of his enemies. The scenes where he confuses the bad guys are intriguing indeed. But Raimi at last runs out of courage and resorts to gimmicks. Larry Drake is effective as the heavy who delights in cutting off his victims fingers.

FAIR HORROR DIR - Sam Raimi LEAD - Liam Neeson RT - 120 mins. (Profanity)

THE ICICLE THIEF (No Rating)

Jumbled farce from Italy which parodies Vittorio De Sica's classic "Bicycle Thief" in its attempt to satirize television commercials. Director Maurizio Nichetti, who also stars, uses a film-within-a-film technique to tell the struggles of a poor post-war Italian family. The black-and-white Neo-Realism presentation constantly is interrupted with outlandish color commercials. And this device is further confused when a character from the commercial gets involved with the story. In Italian. English titles.

FAIR COMEDY DIR - Maurizio Nichetti LEAD - Maurizio Nichetti RT - 98 mins.

MEN AT WORK (PG-13)

Garbage men get their turn at being heroes in this trashy, juvenile comedy starring Charlie Sheen and Emilio Estevez. These good-natured sanitation men find a dead body among the garbage. Their curiosity leads to an investigation of political corruption and illegal toxic dumping. Adolescent humor, some car chases and a fistfight are involved on the way to subduing the culprits. Leslie Hope and Dean Cameron also are in the cast.

FAIR COMEDY DIR - Emilio Estevez LEAD - Charlie Sheen RT - 98 mins. (Mild Profanity)

PUMP UP THE VOLUME (R)

A refreshing, uplifting teen film that offers a sympathetic, uncondescending look at adolescent emotions and problems. The uncompromising story is told through the experiences of a shy, rebellious high school student (Christian Slater). He bares his soul via a pirate radio show that soon attracts a cult following among his peers. Slater handles the role with aplomb and sensitively displays the character's defiant point of view. Samantha Mathis does well as a girl who offers encouragement.

GOOD TEEN DRAMA DIR - Allan Moyle LEAD - Christian Slater RT - 100 mins. (Profanity, brief nudity)

THE WITCHES (PG)

Anjelica Huston's unbeatable portrayal here as the Grand High Witch sets a high mark in movie witchcraft. Effectively done up with a huge, beaked, warty nose and an exaggerated chin, she's in charge of a sinister plot to turn all British children into mice. This scary bedtime story is too intense for small children. But there is ample charm, suspense and sophistication to entrance pre-teens and upward. Jasen Fisher performs well as a youngster turned rodent who then turns the table on his tormenters.

GOOD CHILDREN'S FANTASY DIR - Nicolas Roeg LEAD - Anjelica Huston RT - 92 mins.

The Anchor Classified Ad Policy:

Classified ads cost \$1.00 per 30 words or less .

Date of Issue: _____ Date ad placed: _____

Check one: For Sale/Rent Employment
 Miscellaneous Personal

Print Ad, 30 Words or Less: _____

Name (Person or Organization): _____

Signature: _____ Date: _____

(1) No full names or telephone numbers will be printed in the Personals column without the express written permission of that individual.

(2) Name of person/organization placing ad: _____

Status (check one) Student
 Non-Student
 Organization

Social Security# _____

*Phone _____

Date of Issue: _____

* This information is for verification and office use only.

Classified Ads will be unacceptable if this form is not filled out completely.

Twenty-five free personals are given away each week to Rhode Island College students. Personals forms and depository are located at the Information Desk in the Student Union. Other classified ads may be placed, with payment, at the Anchor, S.U. 308.

**It's a wonderful day
in the Neighborhood**

wonderful day in the neighborhood

would you be?

could you be?

won't you

JOIN THE ANCHOR

GET EXPERIENCE

We have positions available for:

ADVERTISING ASSISTANTS

PRODUCTION ASSISTANTS

GRAPHIC ASSISTANTS

STAFF WRITERS

APPLY TODAY