


Inquiring Photographer:
Where should the new athletic center be built?
 Page-3

Inside Sports
Softball Shutout by Bridgewater State
 Page-5



Inside Arts & Entertainment:
Record Reviews: David Byrne The Ramones
 Page-9

Established 1928 Rhode Island College April 13, 1992 Free

The Anchor




“Free access to ideas and full freedom of expression”

News Briefs

Auditions for student speaker for May Cap and Gown Convocation

The Class of 1992 will hold auditions for student speaker for the May Cap & Gown Convocation on Wednesday, April 15, at 7:00 p.m. in the Student Union Ballroom. Senior baccalaureate degree candidates should come prepared with a three to five minute speech on why they would like to be considered as the Senior Student Address at the Cap & Gown ceremony on Wednesday, May 6 at 12:30 p.m. in Roberts Auditorium.

The speech might include reflections on both academic and personal experiences during College years, words of encouragement to the graduating class, and any other important ideas pertinent to the occasion. For more information, contact the Campus Center at 456-8034.

Anchor to hold editorial board elections

The Anchor will hold its editorial board elections for the 1992-1993 academic year this Wednesday, at 12:30 p.m., in Student Union, room 308. Anyone interested in running for a position on the board can be nominated at this time. All Anchor staff members are required to attend this meeting.

Features

- Campus Connection 2
- Inquiring Photo 5
- Sports 9
- Arts & Entertainment 11
- What's Happening 12
- Editorial 18
- Cheese's Spread 20
- Crossword 22
- Classifieds 23

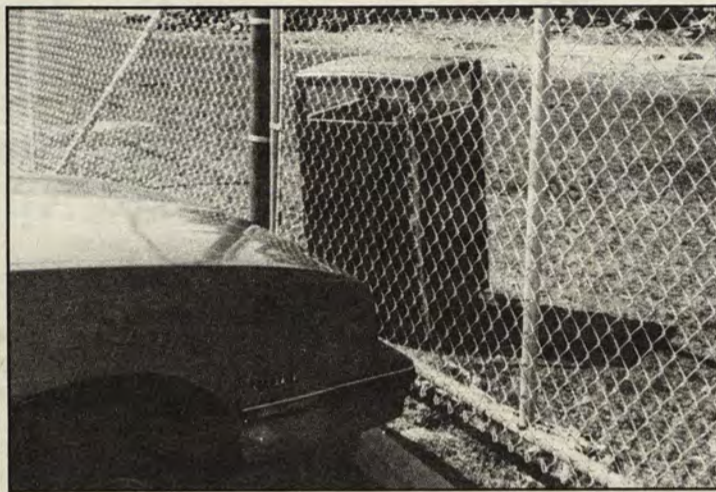


Photo By Jeff Damiano

PUT LITTER IN ITS PLACE? *This trashcan somehow got stranded on the wrong side of the fence that now surrounds Walsh Gym. While the can cannot be emptied, that's fine because no one can put trash in it.*

Students at Oregon State University Organize Book Swap

(CPS) Oregon State University students who got tired of standing in line and getting back a fraction of the cost of expensive textbooks have organized an alternative way to buy, sell and trade books with other students.

The first BookSwap in the university's history took place from March 18 through April 1, and students say they are going to do it again in the fall.

The BookSwap obtained lists of books needed from instructors and created a master list of all texts needed for the next term, which included over 1,000 titles.

There are no books at the BookSwap, only a database divided into "wanted to buy" and "wanted to sell" categories that include student IDs so that people can network and make deals to buy, sell or trade books.

"We keep lists of current prices, and buyback prices, but the students can barter within themselves," says Scott Ballo, student and academic affairs task force director, who helped coordinate the event.

Ballo described the campus bookstore as "not very happy" about the event, although administrators were cooperative.

In spite of a slow start, with only a few hundred students responding, BookSwap devotees said they are certain it will grow.

Ballo said the average price of a used book was about \$40, with the most expensive book, a text on veterinary medicine, ticketed at \$190.

Student loans in jeopardy

More students eligible for less money

By JOHN VALERIO
 Anchor News Editor

Students who qualify for loans through the Rhode Island Higher Education Assistance Authority (RIHEAA) will see less money next year and some may not even get any aid if proposed cuts to the RIHEAA budget are approved for next year's budget.

According to Elwood G. Farber, Executive Director of RIHEAA, the proposed cuts are going to "create some drastic pressures on students and their families to change their educational plans. Either a freshman not being able to go the first year and have to work for a year to raise enough money to overcome this deficiency or students who are in school potentially have to stop out for a semester."

Late last week, Farber made a presentation to the House Finance Committee on the proposed funding for 1992-1993 fiscal year.

"The proposal is that we receive \$7.9 million for 1993, compared to \$9.3 million we received this year. That's about 15 per cent reduction. At the same time as we're seeing a proposed 15 per cent reduction, we're seeing an increase of 24 per cent on-time eligible applicants....That pool, while it's increasing 24 per cent, has a greater need," Farber said.

"The need has gone up dramatically, yet the dollars have gone down dramatically."

Farber says there's a greater need due to the fact that income levels have gone down and employment levels have gone up. College costs have also gone up. Farber says that the public higher education schools are projecting a five per cent increase, while the private schools are projecting a seven to nine per cent increase.

"Those two factors on one side are creating an additional unmet need for the students, and on the other side we have more students getting their applications in on time...then you combine that with a reduction of \$1.4 million in funds available to serve those students and you have some severe pressures on the system," he said.

While the number of students that can be given aid will be limited, so will the average award that each student receives. "This year our average award is just over \$840. Last year our average award was about \$1,075. Next year, if we do not receive a favorable decision from the General Assembly, and get that award proposed funding level increased, our award level is going to go down to about \$640. That decrease...is in addition to the elimination of 1,300 students from the eligibility group that would be eligible under this year's formula," Farber said.

Kappa Epsilon involved in community

By REBECCA POWELL
 Anchor Staff

In the fall, RIC holds a Student Organizations Day where organizations set up tables and students get information on groups they are interested in. Among these organizations is the sorority here on campus. The name of the sorority is Kappa Epsilon and it has about 30 active members.

Kappa Epsilon is a nationally affiliated sorority that began in 1973. The sorority is one of 14 sorority chapters that belong to the Epsilon chapter. These chapters are located in Mass. N.H., VT., Maine, and R.I. To become a member of the sorority students

must spend 6-8 weeks pledging in the fall. (This period is called a "rush.")

One pledge event a week is held and each one has a certain meaning. The events have to do with the history and rituals of the sorority. Each student pledging gets a pledge folder and a big sister who helps the student through the pledging. Unlike some other sororities, Kappa Epsilon does not bid on its members. Whoever comes and completes all the events becomes a member.

The president of Kappa Epsilon, Dawn Catalano, says many students join because they want to make friends and get in-

involved. The sorority is involved in a lot of volunteer work. They are sponsoring the Super Cities Walk to raise money for Multiple Sclerosis. They are holding a Ruby Slippers Dance to benefit R.I. project AIDS. They are also holding a clothing drive which benefits the Travelers Aid Shelter, and are making Easter baskets for the girls at St. Mary's home. On April 26, they are co-sponsoring the Fun Run to raise money for the athletic department, to make up for the loss of Walsh Gym. These activities are among the long list of volunteer work the sorority is involved in.

On April 10, 11, and 12 a na-

tional convention will be held on the RIC campus for all the Epsilon chapters and alumni. At the convention the sororities and their individual members apply for awards such as highest GPA, most alumni present, and the national scholarship award. It is no wonder that 2 years ago the sorority won the award for most service on and off campus.

As for the goals of Kappa Epsilon, the sorority wants to be more recognized and to increase its members that are genuinely interested. To be eligible to become a sister, you must be an undergraduate female with a GPA of 2.0 or above.

RICOR Plans Campus Cleanup Day

RICOR (Rhode Island College students Organized for Reformation) and the Local 2878 will be sponsoring a campus cleanup day on Saturday, April 25.

Show you care! Please join the effort in helping clean up the campus. We need as many people as possible to assist in the cleanup. Gloves and trash bags will be provided by Keep Providence Beautiful. Pizza and soda will be provided for lunch.

Interested students will meet in the Coffeeground on Saturday, April 25, at 9:30 a.m. The cleanup will run from 10:00 a.m. until 2:00 p.m. For more information, contact Liz Deiner at 456-8365.

NTE Workshops

The Academic Development Center, Craig Lee 224, will present a series of workshops in preparation for the National Teacher Examination (NTE).

Workshops will be held on Tuesday, April 28 and Tuesday, May 5, from 2:00 p.m. to 3:00 p.m., presented by Elise Chapman and Emmett Glenn. Workshops will also be presented on Thursday, April 30 and Thursday, May 7, from 6:00 p.m. to 7:00 p.m., presented by Dr. Arlene Chomey.

All are welcome to attend.

Women's Center Holds Self-Defense Workshop

A one-hour self-defense workshop will be held on Wednesday, April 15, from 10:00 a.m. to 11:00 a.m. Anyone interested in attending can meet at the Women's Center, located at the lower level of Donovan Dining Center. This is part of Rape Awareness Week (April 13-17). For more information, call 456-8474.

Acquaintance Rape Workshop Scheduled

As part of Rape Awareness Week, Dr. Tom Lavin and Jan Park of the Counseling Center will hold a workshop on "Acquaintance Rape on Campus," on Thursday, April 16, from 12:30 p.m. to 2:00 p.m. in Craig-Lee room 228.

The workshop will include a provocative new video entitled "Someone You Know." The workshop is free and open to the entire campus community.

Students For Choice to Meet

Rhode Island College Students For Choice will meet on Wednesday, April 15, at 12:00 p.m. in the Bachelor of Social Work Conference room. All those interested in women's health issues and freedom of choice are welcome. For more information, contact Christi at 456-8474.

Psychology Society Plans Research Conference

The Psychology Society will hold its First Annual Student Psychology Research Conference on Wednesday, April 29, from 12:30 p.m. to 2:00 p.m. in the Student Union Ballroom.

The conference will provide a forum for students to present their research in either oral presentation or poster form. All interested members of the college community are invited to attend. For more information contact Jessica McIlvane at 831-6695.

APICS Holds Professional Night

The RIC Student Chapter of APICS will hold a Professional Night on April 28, beginning at 6:00 p.m. in the Center for Industrial Technology, located in Whipple Hall.

Students will be able to spend some time with alumni from the Industrial Technology Department and learn how American manufacturers are integrating their resources to compete in the new international marketplace. Representatives from Calcomp Inc., McInturff Associates, Motorola Codex, Bose Corp., and McMullen Associates, are among the manufacturers who will be in attendance.

Samaritans Seeks Volunteers

The Samaritans, Rhode Island's suicide prevention center, is looking for volunteers to answer the 24 hour crisis line in the center's office at 2 Magee Street, Providence.

Training classes are held at The Samaritan Center on Magee Street. There are seven sessions: Monday, May 11; Monday, May 18; Wednesday, May 27; Monday, June 1; Monday, June 8; Monday, June 15 and Monday, June 22, from 6:30 p.m. to 9:30 p.m. The sessions cover befriending, depression, grief and loss, confidentiality and other issues involving suicide prevention. Volunteers are asked to call the office at 272-4516 to arrange for an interview prior to training.

Put Your Best Foot Forward: Walk For Hunger

By LYNN DITUSA
PRISM Contributor

Bathing suit season is just around the corner and I'm sure we could all stand a little exercise. After a winter of a little too much food and not quite enough exercise,

PRISM

we need to take action fast! I have the perfect solution that will benefit you and will help feed the hungry, all at the same time.

On Good Friday, April 17, there will be a 10-mile Walk for Hunger with proceeds going to agencies such as Amos House, McAuley House and South Providence Neighborhood Ministries. Through

PRISM, the community service-learning group, Rhode Island College has had some contact with these agencies and hopes to continue that contact by raising money for their efforts to help the hungry. If you are interested contact the Chaplains Office, located in Student Union room 300, and pick up a sponsor sheet as soon as possible.

On Friday morning, we will be meeting in Student Union 300 at 8:15 a.m. for "coffee and" and then we will travel to the walk-beginning site together. If you are unable to make the walk yourself, please feel free to sponsor those who will walk or to donate directly to the cause. I am looking forward to a fun time and I hope you will join us! We can make a difference, one step at a time.

Ocean State Toastmasters at RIC April 23

Terrified to get up and speak? Want to conquer your speaking and presentation fears, and at the same time build your self-esteem? Toastmasters will help you excel.

Ocean State Toastmasters of Warwick, R.I., will be conducting two meetings at the Student Union building, Thursday, April 23, 7 to 9 PM, room SU-211, announced by club president, Don Vieweg. The public is invited.

"Actual Toastmaster meetings will be conducted, and students will be invited to

participate," Vieweg said. "Various facets of speaking and effective presentations, such as speech organization and delivery, gestures, eye contact, voice variation, mike sense, etc., will be taught by active participation. This is the ideal way to learn," he added.

Now a professional, country-wide, speaker and seminar leader thanks to Toastmaster training, Vieweg has frequently spoken to Dr. Moyne Cabbage's Public Speaking classes. Reservations are not required. For more information, call Don Vieweg, (401) 737-2058.

Career Development Center

Craig-Lee 054 • (401) 456-8032

Dr. Rose Butler Award

This award was established in 1976 by friends and admirers of Dr. Browne, a 1919 graduate of Rhode Island College.

The nomination period is April 1 through April 15, 1992

Criteria: •Undergraduate student who has completed at least 30 semester hours •Has a grade point average of 2.00 or better •Has completed at least 100 hours of service to a disadvantaged population during the previous year •Has demonstrated and is committed to their leadership potential •Letter of reference from their immediate supervisor •A personal statement

For more details, contact Sharon Mazyck at 456-8032

This Week's Workshops

Resumé Workshop

Monday, April 13, 11:00 a.m. to 12:00 p.m.

Co-Op Information Session

Tuesday, April 14, 9:00 a.m. to 10:00 a.m.

**Applications for federal summer employment jobs
can be picked up in Craig-Lee 050.**



HIPPICLIX

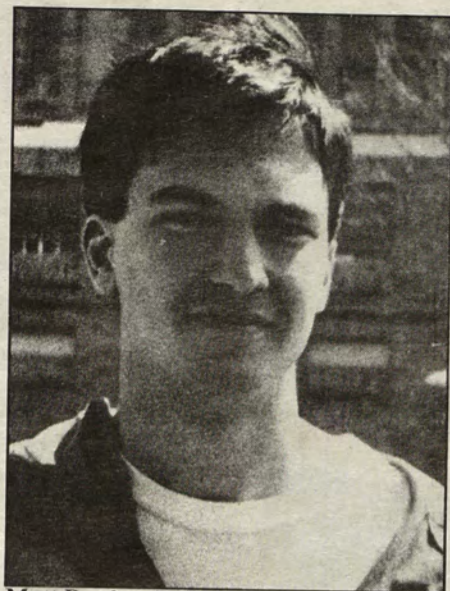
828-HIPP

300 Quaker Lane, Coweset Corners • Warwick, R.I.
(Next to Fabric Place)

Anchor photos by Jeff Damiano



Mike Ferrazza: They should leave it in the same place.



Matt Barden: Build it right where it is.



Dina Lee Almeida: Leave it where it is.



Bill Nelson: Same place.

"Where should the new athletic center be built?"



Melissa Marzullo: They should build it on top of the Rec Center.



and the Class of 1993 sponsor a

BEACH HOUSE BLOWOUT



with the Phobics
Tuesday April 21st
7 p.m. to 1 a.m.
in the Coffeeground
don't pass up your chance to win a
BEACH HOUSE
for a week in
SCARBOROUGH
plus
GENESIS CONCERT TICKETS
T-Shirts, CDs, Posters, and
much, much more

Listen to WXIN 88.1FM for details and to INCREASE your chances of WINNING!!!

Sponsored by the Class of 1993 and your PowerHit Connection





Orientation ⁹²



New Student Programs

Student Peer Counselors

Approximately 12 positions Available

Dates: June 22-July 24, 1992
August 11-13, 1992
January 11 and 12, 1993

Qualifications:

- Must be able to work entire month and other dates as specified.
- Must have an overall GPA of 2.5 or better.
- Must be enrolled in courses this semester and in the September 1992 semester.
- Must have knowledge of RIC curricula, policies and procedures.
- Must have demonstrated the ability and/or desire to work with new students.

Salary: \$1,000 New Student Peer Counselors
\$1,100 Returning Student Peer Counselors
\$1,250 Head Student Peer Counselor
August and January compensation extra Fall and Spring employment guaranteed

Information and Applications Available From:

Office of New Student Programs Craig Lee 060

Application Deadline: April 24, 1992

Faculty Advisors

7 positions Available

Dates: June 22-July 24, 1992
August 11-13, 1992
January 11 and 12, 1993

Qualifications:

- Must be available to work Monday, Tuesday, Thursday, and Friday afternoons and one Wednesday in July.
- Must have knowledge of RIC curricula, programs, policies, and procedures.
- Must have facility and experience in working with students outside of the classroom.
- Must have experience teaching undergraduates.
- Must have experience as an Academic Advisor.

Salary: \$2,000
(July, August, January Program)

Information and Applications Available From:

Office of New Student Programs Craig Lee 060

Application Deadline: April 24, 1992

US slowly moves to clean, inexpensive ethanol

By MICHAEL CORRENTE
Anchor Staff

The United States Department of Energy, in cooperation with the Finnish Ministry of Trade, is conducting a program to increase each nation's capacity of the production of essential fuels from biomass. Essential fuels are fuels that are in daily use and are directly necessary for a nation's energy capacity, examples are

On Environmental Grounds

home heating fuel and gasoline. Biomass fuels are fuels that are derived from agricultural and forest products and organic wastes. Biomass fuels, such as wood chips, agricultural wastes and the "black liquor" waste of paper production, can be burned directly in incinerators that produce electricity. Materials such as corn stover and wheat residue, can be converted to an ethanol (C₂H₄O), by a fermentation process. Among the several uses of ethanol as a fuel is clean burning gasoline.

The United States and the government of Finland have several good reasons for a fast conversion from petroleum to biomass fuels. Biomass fuels are developed from organic waste products which are a renewable energy source. This makes biomass fuel production, unlike petroleum fuel products, cost effective and environmentally sound.

Second, and perhaps most important, is that biomass fuels are domestic fuels. This curtails the river flow of cash moving out of the domestic economy into Middle Eastern petroleum banks.

The most highly publicized advantage of the use of biomass fuels is their clean combustible waste products. Unlike petroleum waste products, ethanol does not emit toxic pollutants such as hydrocarbons, carbon monoxide, tropospheric ozone precursors (smog) and nitrogen, containing wastes.

That essential biofuels are clean burning is becoming increasingly important to business interests, particularly in Finland. The government of Finland in April 1991 passed a national "harm tax" which is a tax on materials such as petroleum that harm the environment. Finland is also ex-

pected to pass a carbon tax this year, which would tax any process that emits carbon into the air. As Finland's, as well as other Nordic countries, air pollution standards become more concerned with keeping toxins out of the air, the White House council on competitiveness seeks to decrease the regulations required by the Clean Air Act Amendments, signed into law in 1990. This decreases American business incentive to invest in biomass energy production, keeping the economy dependent on Middle Eastern imported oil, and overall making the American economy less competitive in the long run by sustaining the consumer cash export of energy dollars out of the domestic economy.

Finland's industrial ethanol is produced by Alko Oy, a legal monopoly. Today, Alko Oy's ethanol production capacity is about 30 million gallons per year. American commercial production of ethanol is headed by the Archer-Daniels-Midland Company of Decatur, Illinois. ADM produces about 800 million gallons per year of ethanol.

If the United States industry turned to 100% ethanol capacity today, it could supply from ten to 50% of American liquid fuel needs, according to Lonnie Ingram of the University of Florida. This figure includes "current" capacity, with no governmental subsidy financed by a tax on economically harmful imported fuels and a consumer incentive to buy the clean burning domestically produced gasoline substitute.

Charles Wyman of the National Renewable Energy Laboratory noted in a speech at a biofuels workshop held in Washington, D.C. in October 1991, that improvements in fermentation technology could result in lower consumer ethanol costs at the fuel pumps. Wyman stated that in 1981 ethanol costs would have been about \$3.60 a gallon for ethanol. Today, just 10 years later, development of the ethanol producing process yields ethanol to the consumer at about \$1.27 a gallon, competitive with today's high test fuels and regular unleaded gasoline in a time of war in the Middle East. Wyman also predicted that further improvements of the fermentation process could allow ethanol producers to supply ethanol to the consumer at 60 cents a gallon without governmental subsidy.

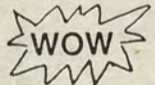
PRIDE LAUNDRY AND DRY CLEANING

1025 Chalkstone Avenue

(Next to the Castle Theater)

OPEN DAILY 7AM to 10PM Tel. (401) 453-1010

TRY OUR BRAND NEW LARGE MACHINES



CHECK THESE PRICES

- 50 lbs. . . . \$3.00
- 30 lbs. . . . \$2.00
- 20 lbs. . . . \$1.25
- 12 lbs. . . . \$1.00



NEW TANNING SALONS
Tan While You Do Your Laundry

PRIDE LAUNDRY DROP OFF CENTER
WASH-DRY-FOLD
SAME DAY SERVICE
PROFESSIONAL DRY CLEANING



Relax and Watch Your Favorite Show
Free Coffee and Tea

\$2.00

OFF

WASH-DRY-FOLD
15 lbs. Minimum

Coupon Good MON-FRI.
Expires 4-30-92

\$1.00

OFF

WASH 50 lbs.
Reg. \$3.00
Pay only \$2.00

Coupon Good MON-FRI.
Expires 4-30-92

75¢

OFF

WASH 30 lbs.
Reg \$2.00
Pay only \$1.25

Coupon Good MON-FRI.
Expires 4-30-92

Great Jobs...

...start with Great Resumes'

Special Offer!
\$5?

One-page resume'
professionally typeset & printed
Fifty copies on very nice paper!

831-4809

ACT Design Group, Seven Gilbert Street, Providence, RI

Have your resume' professionally prepared...
...it will be the difference between a job and a Great Job!



If all Americans lowered their thermostats by 6 degrees, we would save 570,000 barrels of oil per day.

Please Recycle.

RIC Softball Shut-out By Bridgewater State

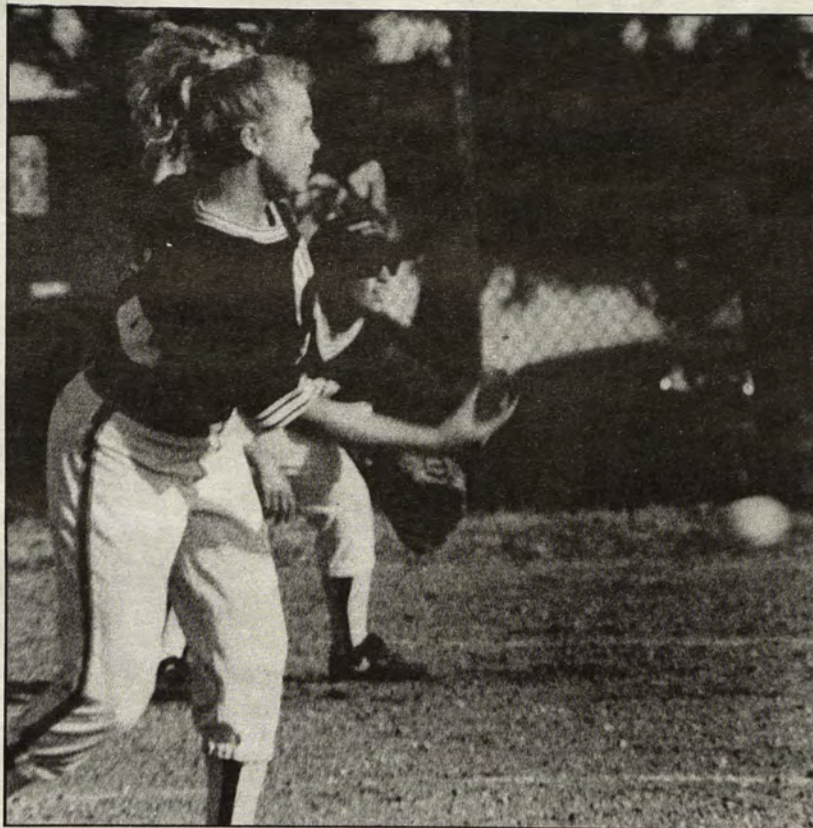
By SUE PERROTT
Anchor Staff

The RIC softball team played a double-header Thursday, April 9 at home against Bridgewater State. Tanya Haugen was RIC's starting pitcher and Stephanie Brown, co-captain, was the catcher.

In the first game, RIC was losing 0-2 by the top of the third inning. As the result of two singles and a stolen base, Bridgewater State increased their lead to 5-0 by the bottom of the third inning, when RIC came up to bat. They quickly ended the inning with two consecutive outs.

A pair of wild pitches thrown by RIC at the top of the fourth inning advanced the same Bridgewater State player. A flyball to leftfield allowed that same player to score a run (6-0). After the seventh, Bridgewater run scored, there was a run-down between third base and home plate. The Bridgewater State player was tagged out, ending that half of the inning. RIC once again closed out an inning quickly, this time with three strike outs.

The rest of the game pretty much followed this format. The first game ended in a 15-0 shut-out. The second game was almost a repeat of the first as RIC once



Anchor photo by Peter Ventrone
Tanya Haugen pitches for the Anchorwomen during the first inning of Tuesday's game.

again was shut-out, this time by a score of 6-0.

Despite losing the double-header, team

spirit was not dampened. There seemed to be much enthusiasm between players on and off the field.

Off The Top Of My Head

By JEFF BRODEUR
Anchor Staff

1. The tragedy of Arthur Ashe's announcement that he has AIDS is that people still go on as if nothing is wrong.
2. Don't look now but as of Thursday, the Sox were one and a half games behind the Blue Jays.
3. John Calipari signed a four-year deal with UMass.
4. As of Thursday, Cecil Fielder had three homeruns in two games.
5. How many people really care that the Master's are being held this week?
6. Well, this NHL season is a wash. Sorry Rangers fans!
7. If the Red Sox build a new stadium, I hope it's along the same lines as Baltimore's.
8. The Indians will not finish last.

Sports Briefs

Interested in playing volleyball next year? There will be a Women's Volleyball Organizational Meeting on April 22, 1992 at 12:30 in Adam's Library, Room 107. Anyone interested in being on the 1992 Fall Women's Volleyball Team please attend.

• • •

The Men's Track and Field Team is currently 3-3. On April 4, they placed fourth out of seven teams at Wesleyan University. The Women's Track and Field Team has a current record of 0-6. Their meets on March 21 and 28 were canceled, and on April 4, the team placed seventh out of seven teams at Wesleyan University. On Saturday, April 25, Rhode Island College will be hosting the Tri State Championships, beginning at 10:00 am. Schools tentatively scheduled to compete include Stonehill, Clark, Bryant, Nichols, Eastern Connecticut, WPI, And Salve Regina.

• • •

The Women's Softball Team recently beat U.S. Coast Guard on Monday, April 6, by the score of 4-3. This victory came after the Anchorwomen lost a doubleheader against The University of Massachusetts at Dartmouth on April 4. After losing a doubleheader to Bridgewater State on April 9, the Anchorwomen have a current record of 1-5.

• • •

The Men's Tennis Team's current record is 4-2. The Anchormen lost on April 9 by the score of 6-4. The Team started off the season by winning its first three matches, all on the road.

After losing in 10 innings to Worcester State College on April 7, and defeating Westfield State 6-2, the Men's Baseball Team currently has a 3-7 record. In the Westfield State game, pitcher Bill Mattera allowed just five hits and struck out 13. The Anchormen have approximately 9 games left for the season, only three of which are scheduled to be played here at home.

Home Games This Week

Tuesday, April 14:

Men's Tennis vs. Bridgewater State 3:30 pm

Wednesday, April 15:

Women's Softball vs. Bryant College (doubleheader) 3:00 pm

Thursday, April 16:

Men's Baseball vs. Salem State College 3:30 pm
Men's Tennis vs. Suffolk University 2:00 pm

WHERE WILL YOU BE THIS SUMMER?

LONDON	195
MOSCOW	345
PARIS	285
AUCKLAND	545
TOKYO	395
SAN FRANCISCO	170
NEW YORK	49

1/2 Round trip fares from Boston, based on a round trip purchase! Taxes and surcharges not included.



171 Angell Street, corner of Thayer
401-331-5810
Call Now



PLANNED PARENTHOOD of Rhode Island

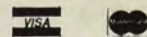
GYNECOLOGICAL CARE

Pregnancy Testing • Contraceptive Care: Prescriptions, Condoms, IUD Insertions, Norplant™ Infection Treatment • Pelvic Exams • Colposcopy • Laser Services

ABORTIONS

Choice of Anesthesia • Decision Counseling • Assistance to Minors

BLUE CROSS AND BLUE SHIELD OF RHODE ISLAND COVERAGE ACCEPTED
MEDICAID COVERAGE • STUDENT HEALTH INSURANCES • YOUTH FEES



Open Six Days a Week • Free Parking
Some same day appointments are available. Call early.

ADMINISTRATION/EDUCATION
421-7820

APPOINTMENTS/CLINIC
421-9620

111 Point Street, Providence, Rhode Island 02903

"Providing medical, educational and advocacy services for more than 60 years."

RIC Tennis Team Loses To Salem State

By ERIC BARNA
Anchor Staff

The RIC men's team met defeat Thursday at the hands of Salem State 6-3. The team lost in the singles 4-2 and then lost in the doubles 2-1. Team co-captains Pete Prendergast and Brad Levett, both four-year starters, won their singles matches. Pete won his first set 6-0 but just won his second set 7-6. Brad went three sets against his opponent in a match that lasted well over an hour. Losing the first set 5-7, he came back in the second set to win it 7-6 and then won the match in the third set 6-4.

The only win by the Anchormen in the doubles came from the team of Kevin Fera and Brad Levett. They won the match in two sets 6-3 and 7-5.

In the other matches, Kevin Fera lost 6-3, 6-1. Jacques Branchaud lost 6-4, 6-2. Scott Robert lost 7-5, 6-0. Jin Kye was tied one set to one set, 3-6 and 6-4, when he retired in the last set. The team of Prendergast and Welton lost in the doubles 6-1, 6-3. The team of Robert and Branchaud lost their first set 6-1 but managed to tie the game when they won the second set by a close score of 6-7. They lost their game in the third set which they lost 7-6.



All in all, the Anchormen played well but the skill of the Salem State players was a bit better. Earlier in the game Coach Richard Ernst said that he gets 100% effort from his players. The Anchormen's record is now 4-2. The Anchormen's next home meet will be Tuesday at 3:30 p.m. against Bridgewater.



Anchor photo by Chuck McGinnis
The men's rugby team saw some rough action last week.

Lung Association Holds 4th Annual Air Challenge

The Rhode Island Lung Association's fourth annual *Rhode Island Clean Air Challenge* will take place on the first day of *Clean Air Week* -- Sunday, May 3, 1992--from Barrington High School, Lincoln Avenue. It marks 20 years that the Lung Association has sponsored national *Clean Air Week*, a public education/awareness campaign, and is one of over 40 Lung Associations *Challenge* bike events being held across the nation on this weekend. "More than 500 riders are expected to participate the *R.I. Challenge* this year," said Tonia Mason, public relations director. "Some 20,00 or more bikers are expected nationwide." Local Sponsors of *The Challenge* include WSNE radio, Major Video, Narragansett Electric, Your Bike Shop and Eccentric Cycles.

Riders may choose between three planned rides through the East Bay area of Rhode Island and parts of Southern Massachusetts. The shortest ride (10 miles) stays entirely in Rhode Island and

Over 40 Bike Events To Be Held On May 3rd

utilizes the East Bay Bike Path. The two longer rides (30 and 45 miles) travel through parts of Barrington and Warren, R.I., and Seekonk, Rehoboth, Dighton, and Swansea, Mass. Bikers are asked to begin their rides between 7:00 and 9:30 a.m.

The pre-registration fee of \$15 (before April 17) per person includes: bike repairs and first aid, refreshments, "trip-tik," *Challenge* T-Shirt, hotdog roast, and free inspection and discounts at Your Bike Shop. Bikers may register on the day of the *Challenge*: T-shirts are not guaranteed for on-site registrations. Families can take advantage of a special Family Rate of \$35 (pre-). Also, riders can become *Challenge* Sponsors by raising \$25 or more, in addition to the registration fee, to

support the Lung Association's programs for clean air and healthy lungs. For those interested in this option, there are incentive prizes for fundraising excellence.

All riders must be 14 or older, unless accompanied by an adult, and ALL ARE REQUIRED to wear helmets. There is NO rain date scheduled, and the *Challenge* will go on if weather is rainy.

A "Clean Air" awareness event, the *Challenge* is scheduled to kick off 1992 *Clean Air Week* (May 2-8, annually sponsored by the American Lung Association) to educate the public about air pollution issues and involve as many as possible in activities to bring about improved air quality. This year's *Clean Air Week* theme is "Clean Air is Up To You!" "This event is

the perfect opportunity for individuals and families to take part in an outdoor healthful activity and to join with hundreds of others to show they care about their environment," said Molly Clark, environmental health associate at the Lung Association. Following the rides, there will be a hotdog roast.

"This event further offers Rhode Islanders interested in the state's air quality to pledge their concern by becoming a *Challenge* Sponsor," said Clark. During the past three years, several hundred bikers and volunteers have taken part each year.

Individuals may pick up registration information at either of two Your Bike Shop locations (East Providence or Warren), R.I. Major Video stores, or can call the Rhode Island Lung Association at 421-6487. Those who sign up for the *Challenge* can receive a free bike inspection at Your Bike Shop, as well as a special discount on a bike helmet, which is required for participation.

Have You Been Injured ?

You May Need An Attorney

Contact the law offices of

Helpus, Gette, Riche and Sune

Concentrating In Everything

Workers' Compensation
Medical Malpractice
Defective Products
Wrongful Death Claims
Uninsured Motorists
Just Want to Sue For the Money



No Fees Unless You Come To Us

776-2700

Offices Located At: 188 C. U. N. Court BLDG.
Providence, R.I. 02903

Attention: Graduating Seniors

Interested in being the Student Speaker at the May 1992 Cap & Gown ceremony

Auditions: Wednesday, April 15, 1992 in the Student Union Ballroom

Come prepared with a three to five minute speech that you would like to be considered as the Senior Student Address at the Cap & Gown ceremony on Wednesday, May 6, 1992 at 12:30 p.m. in Robert's auditorium. The speech might include reflections on both academic and personal experiences during college years, words of encouragement to the graduating class, reminder to students to give back to the community and to the school after they leave the institution, or any important mentionables that you feel are pertinent to the occasion.

For more information call Lisa, Kristen, or Doug at 456-8034.



The Anchor's Fifth Annual Great Pizza Contest

The Anchor will bring the best pizza in the state to campus on Wednesday, April 22. Sample pizza from local pizza parlors outside the Coffeeground from 12:30 to 2:00 p.m. Help choose who will be named Best Pizza. Best of all it's free!



RHODE ISLAND COLLEGE

EXTRA DAILY TRIBUNE

SUE TRADES BOYFRIEND FOR A PORSCHÉ!!!!

NEWS BRIEFS & SHORTS

A POLICE HELICOPTER DELIVERING Ronald McDonald to a McDonald's restaurant crashed before a stunned crowd outside the Detroit fast-food outlet.

"Ronald" McDonald came out of the wreckage in a somber mood, said one eyewitness. "Everyone seemed to spend a few minutes getting control of himself, then he turned and raised his hands toward the

Iran Tries Sixty-three
Sixty-three persons executed in Iran last month are due to be tried "some time in September," according to a source close to Ayatollah Khomeini. It is expected that they will be found guilty.

N.Y. Celebrates Budget Surplus



Say what you want to say in a real newspaper headline! Got a new boyfriend? How about a fiancée? You design it. You keep it. All for a buck!

Wednesday, April 22, from 10:00 a.m. to 2:00 p.m., outside the Coffeeground.





OlympRiCs



MONDAY
April 20th

1992

THURSDAY
April 23rd

▲ Red Sox Game/Trip

Red Sox vs. Toronto Blue Jays
Tickets are \$8.00 at Info. Desk
Bus leaves S.U. loop at 9:00AM
Game time is 11:05 AM

▲ Smithereens w/ special guest Tom Cochrane

Tickets are \$5.00 with ID
\$10.00 for general public
Showtime is 9:00PM in
Donovan Dining Center

WEDNESDAY
April 22nd

▲ Airball of New England

11:00AM - 5:00PM
Outside the Student Union

▲ Health Fair

12:00PM - 2:00PM
R.I.C. Quad

▲ Reptile World Showcase/Lecture

12:30PM - 2:00PM
S.U. Ballroom

▲ The Anchor's Pizza Tasting Poll

Lunchtime
Outside the Coffeeground

▲ "Newspaper Headlines" by the Anchor

10:00AM - 2:00PM
Outside the Coffeeground

▲ Caricaturist

All Day Long
In the Coffeeground

▲ "Give a Damn, Give a Year"

Sponsored by Chaplin's Office
and PRISM
12:30PM - 2:00PM
R.I.C. Quad

▲ R.I.C. TAC TOE

It's Free!
1:00PM
R.I.C. Quad/Craig Lee

▲ R.I.C. Flicks

"Evil Dead 2: Dead by Dawn"
\$1.00 with ID
9:00PM
S.U. Ballroom

▲ Outrageous Obstacle Course

11:00AM - 3:00PM
R.I.C. Quad

▲ The R.I.C. "Sludge Match" by RSA

12:00PM - 4:00PM
Outside the Coffeeground

▲ Cookout by WXIN

Lunchtime
Outside the Coffeeground

▲ The STORGY Awards

6:00PM
Faculty Center

▲ AMA Dance w/WXIN DJ

9:00PM - 1:00AM
S.U. Ballroom
Sponsors: AMA, WXIN,
Programming, Kappa Delta Phi



TUESDAY
April 21st

▲ Spider Web

The outrageous version of the
Velcro Jumping Wall
11:00AM - 5:00PM
Outside the Coffeeground

▲ The Orbotron

"The Spinning Gyro"
11:00AM-5:00PM
Outside the Coffeeground

▲ Coffeeground Dance w/The Phobics

\$2.00 with ID
7:00PM - 1:00AM
Sponsored by:
The Class of '93 and WXIN

FRIDAY
April 24th

▲ The Spring Cotillion by RSA

7:00PM - 1:00AM
Mansfield Host Hotel
\$20.00 per person
Tickets available at Info. Desk

SATURDAY
April 25th

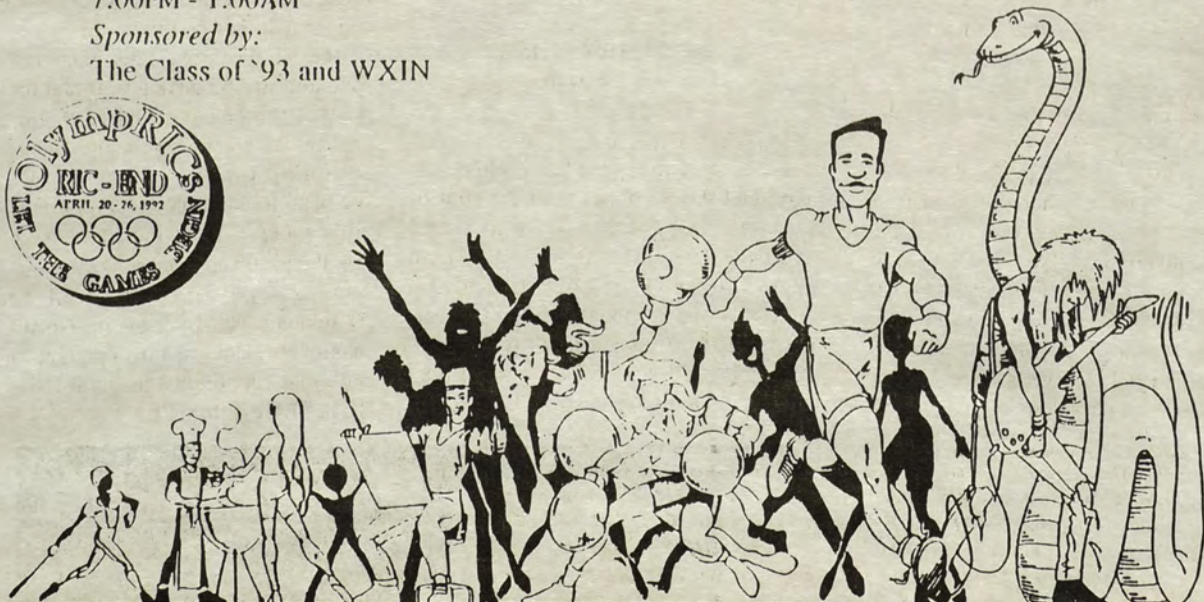
▲ Rock Hunt

It's Free!
12:00 Noon
Weber Beach

SUNDAY
April 26th

▲ R.I.C. End 5K Fund Run/Walk

10:00AM (12:00 is Race Time)
Walsh Parking Lot
\$5.00 pre-entry fee
(deadline 4/23)
\$7.00 post entry/day of race
Stop by the S.U. rm. 310 or
call 456-8045
Proceeds to benefit R.I.C.
Athletics for losses from Walsh
Gym Fire



LET THE GAMES BEGIN...



Record Reviews



Uh-oh, Byrne is back

David Byrne
Uh-oh

By JEFF DESTON
Anchor Staff

With 19 previous albums, awards -- such as an Academy Award, Golden Globe, MTV's Video Vanguard, Film Critics Award -- videos, photography exhibits and musical scores, David Byrne couldn't possibly delve deeper into his imagination for some more creativeness, could he?

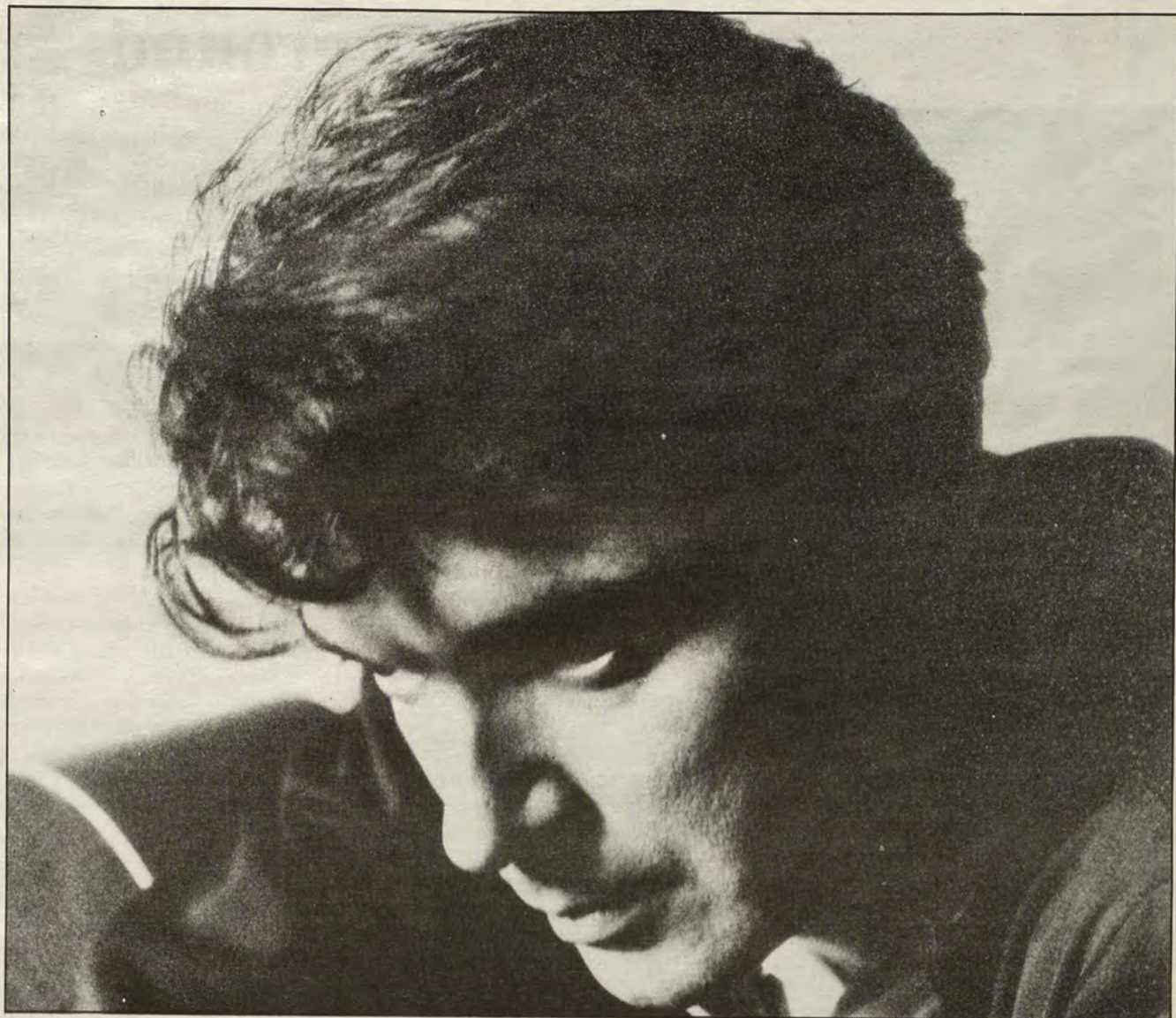
Uh-oh. He has with his twentieth album, *Uh-oh*. The album is jam-packed with messages, humor, good fun and most of all, good music.

With a Latin tip now incorporated into Byrne's style, along with his usual weirdness displayed while in the Talking Heads, Byrne has a lot from which to draw. The tracks range from a song about a sex change, "Now I'm Your Mom," to a song about the effects of racism on a woman in "Somebody." Along the way, Byrne utilizes instruments from brass, woodwind and string sections to synthesized sounds and every percussion instrument known to man.

One of the tracks that sticks out: "Girls On My Mind," a song about just that, is a jumpy playful tune with smooth bits of violin weaved in to make it perfect. "I got girls in my mind, I think about them mostly all the time," he proclaims rather jokingly and Byrne easily pulls it off. The message is simple, the music great.

Also, "Hanging Upside Down" will hit a nerve with most of you kids from suburbia. About the mall culture of America, the mall being the place where everyone hangs out as a kid, or at least wanted to, Byrne beautifully sings a portion about shoplifting, stating "I gotta have it, I'm gonna grab it, it ain't stealin'." It's purely fun and the best description of a mall I've ever heard. "No one walks, no one dies, no more hassles anymore." The song includes a brass section -- a piece that'll blow you away and a cool, weird guitar lick.

All together, Byrne and his associates have put together a blockbuster album different from your run-of-the-mill alternative, something worth buying right away. If you don't get it, you might end up slapping yourself in the head, saying "Where is my *Uh-oh* tape? Where is my beautiful wife? Where is that big car. O God, what have I done?"



David Byrne

A Band for the 90s

Chainsaw Kittens
Flipped Out in Singapore

By TERRY SHEA
Anchor Staff

The Kittens' second release solidifies their reputation as one of the truly quintessential 90s bands. Lead singer Tyson Meade grew up with Cheap Trick and the New York Dolls and this 70s upbringing is evident in the unstructured, melodic thrash of "Flipped Out in Singapore." They've been described as the Dolls and Cheap Trick wrestling in a vat of wet concrete -- peculiar; initially disturbing, but eventually appealing and quite riveting. Every time the listener assumes that they've pinned down this band's style, they veer off in a sonic tangent which makes bands like The Smashing Pumpkins and Jane's Addiction so original.

"Connie I've Found the Door" is the first single, but is only a limited representation. Listeners may be tempted to write them off as just another "progressive" metal band. In fact, they do score some rather banal efforts like "High School Makes Me High," which sounds like a 16-year-old trying to write a Nirvana song ("...you could never be the teacher's pet you haven't tried that yet and you better best forget..."). "2nd theme/Flipped Out in

Singapore," "She Gets," and "When You Shoot" are better, blending clever 70s hooks with 90s crunch. One of the best tracks is the standout, "Never to be Found." Ethereal guitars and stream of consciousness lyrics phase in and out of your headphones like a bad trip make this one realize that The Kittens are more than five guys who were never told that music has rules.

While not an "intelligent" band like several of their alternative brethren, the Chainsaw Kittens come across as seriously fun without veering towards the self-parody that most of their childhood idols have now become. Look for them to surprise us more often as their decade progresses; it's hard to say what's so great about them, but as Tyson sings in "Shannon's Fellini Movie," "I can't describe something that fits.

The Classic Ramones

Ramones
Loco Live

By TERRY SHEA
Anchor Staff

"Onetwofreefaw!" and the boys are back in town. This time, it's from Barcelona, Spain and the Ramones start the first of the 30-plus songs that fill "Loco Live," the band's first official live release in America (our bootlegs notwithstanding). If you love the Ramones, get the CD version. This recording is non-stop, breathless bop that does not cease until the final chord of "I Don't Wanna Go Down in the

Basement" signals the end of the show. By that time, you'll probably already have lost 10 pounds from diving off your column speakers over and over again.

If you regard *Loco Live* as a sort of live greatest hits compilation, however, you may be disappointed. Stripped of the restraints of studio polish, live versions of "Blitzkrieg Bop" and "I Wanna Be Sedate" are taken at breakneck speed and are almost lost in the midst of less popular hits like "Chinese Rocks" and "Pet Semetary." There is no self-indulgent rock star patter besides the occasional "Gracias!" The only separation between these short performances is the "1-2-3-4" that the Ramones have made famous.

The overall effect of this uninterrupted set is a true feeling of the spirit of punk and the almost mindless 50s teenage-angst sensibility that the Ramones have given to it. They sound as raw as Motorhead, but as tightly structured as the Boston symphony-planned spontaneity.

The group comes off best with versions of "Pinhead," "The KKK Took My Baby Away," "Haven's Affair," and "Best on the Beat." As the middle of the show approaches (around "Pet Semetary"), one cannot help but be overawed by the spirit of the whole thing. This band is on the road almost 365 days a year and they still manage to make it sound fresh and alive. The crowd, when you can hear them on an occasional two-second break, clamor for the band to continue; everyone is undeniably caught up in the immense energy that the group emanates. They chant "itey-ho. Let's go!" as they wait for the Ramones to start yet again. No political manifestos here - just over an hour of pure rock that sounds just as good today as it did at CBGB's in 1976.



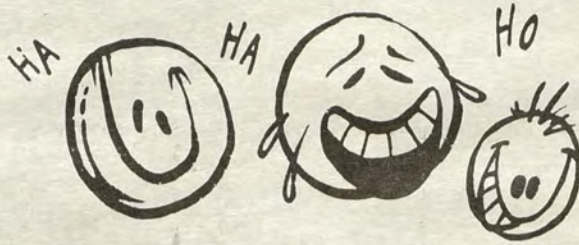
BLAH! BLAH BLAH BLAH, BLAH BLAH PROMOTION BLAH BLAH? BLAH, BLAH BLAH BLAH BLAH DESIGN, BLAH BLAH BLAH, BLAH PRINTING, BLAH BLAH. BLAH BLAH SPECIALTY ITEMS BLAH BLAH BLAH. ANYTHING BLAH BLAH! BLAH BLAH BLAH EVENTS PROMO, BLAH BLAH CONSULTANTS, BLAH BLAH ADVERTISING, BLAH BLAH BLAH BLAH FAST BLAH BLAH BEST PRICING, BLAH, BLAH BLAH BLAH BLAH BLAH SCREAMING GRAPHICS, BLAH BLAH BLAH SKILLED BLAH BLAH PROFESSIONALS BLAH BLAH BLAH REPUTATION BLAH SAMPLES. BLAH BLAH TODAY!!!

Pomegranate
DESIGN · SCREENPRINTING
751-9729

“Smoking”, “Drinking”, and laughs at the Coffeeground



Anchor photo by Brenda Belluso
Nancy Monroe is popular on the comedy club circuit.



By JULIE DICKINSON
Anchor Staff

Last week, the Coffeeground was host to two delightful comics: Nancy Monroe and Tom Agna.

Nancy started her act out with jokes about her family and her last date, the jokes that most comedians use. She then went on to talk about how she does not drink that often. She said that she turns into every woman she has ever criticized when she drinks.

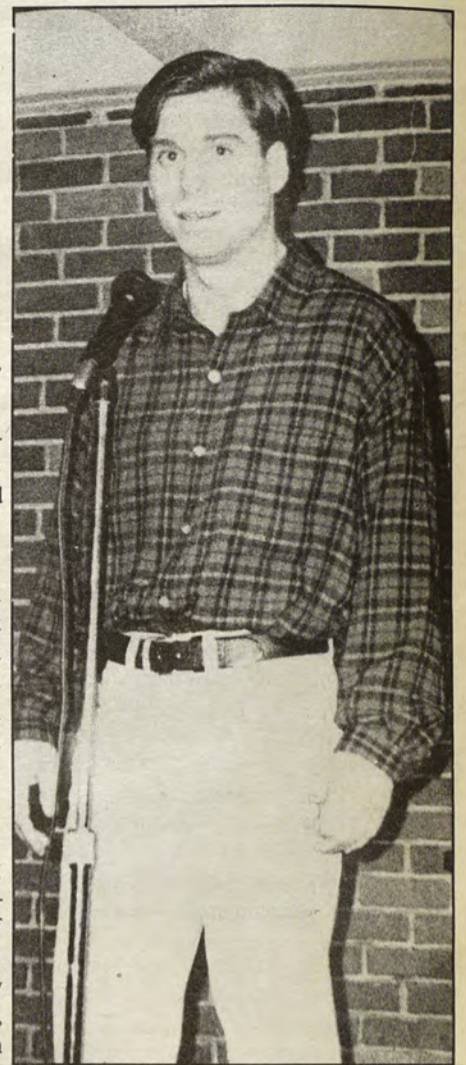
She then talked about “Designer Imposters” perfumes. The commercial says “If she likes Giorgio, she’ll love Primo.” Nancy does not agree. She says “If she likes Giorgio and you give her Primo, you’ll never [have sex] again. If you like sex, you’ll love masturbation.” The female portion of the audience seemed to really like that joke.

Next up was a comic veteran. Tom Agna has been on “Evening at the

Improv” and “Caroline’s Comedy Hour.” He also talked about drinking. He related his drinking problem to his love life, saying “When I was drinking, I had a couple of long-term girlfriends...the police called them hostages.”

Tom also talked about how he was a smoker, but a considerate one. He will not smoke in the house of a non-smoker, but when they go to his house, he makes them smoke. He says of this “My house, my rules. If you don’t like it, go out on the porch.”

It seems that some of the comedians who have come to RIC joke about having drug or alcohol problems. Tom said he became a prescription drug addict instead of being a doctor. So never fear all of you drug addicts in the world. When people say you’ll never get a job if you use drugs, they’re wrong. You can always become a comedian!



Anchor photo by Brenda Belluso
Tom Agna has appeared on Evening At The Improv and Caroline’s Comedy Club.

We can only dream of endless summers, but there are endless reasons for taking URI summer classes.

When you enroll in a URI summer class you’re doing so many good things for yourself. You can accelerate your degree to graduate ahead of schedule or lighten your course load for the fall and spring semesters. Choose from 400 courses and register for hard-to-get courses that

close out quickly. You can choose day or evening classes in Providence or Kingston. You will enjoy smaller classes and shorter terms. But the best reason for taking URI summer classes is that you will be making great strides towards improving your future.

Register by May 27th for the best selection of Term I classes.

Term I: June 1-July 3

Term II: July 6-August 7

**For a 1992 Summer Course Schedule
call Toll Free 1-800-367-1144 or 401-277-3800**



The University of Rhode Island

CENTENNIAL



The University of Rhode Island
1892-1992

Layout & Design assistants wanted

- Design and create every page of The Anchor.
- Help complete every step in the layout process:

- Page Design
- Ad Placement
- Color Overlays
- Paste-up

- Learn how to use the Macintosh and the latest desktop publishing software.

Contact John or Jeff at The Anchor or stop by the staff meeting, every Wednesday at 12:30 p.m. in Student Union Room 308



Slik Toxik Rejuvenates Canadian Rock

By "JUNGLE" JIM ELLIS
Anchor Contributor

Slik Toxik, a five-man band from Toronto, in releasing their debut album on Capitol Records, has redefined the Canadian rock scene. While Bryan Adams and Honeymoon Suite may be familiar to you, Slik Toxik is sure to change the way you listen to music from north of the border for a long time to come.

The band formed in 1988 with Nick Walsh, Rob Bruce, Kevin Gale and lyricist Dave Mercel. The four had been in different bands and now wanted to approach their music differently. The addition of Pat Howarth and Neil Busby in 1988 completed the band. Being influenced by such bands as Rush, Aerosmith, Van Halen, Queensryche and Judas Priest, Slik Toxik played the Toronto bar scene for three years before being signed. The band is out to change the conception of Canadian bands and what it's all about. Lead singer Nick Walsh said, in a recent WXIN/Anchor interview, that "there has never been really anything as heavy, hard rock with an attitude, coming out of Canada."

The band's name came out during initial recording sessions in 1988. Pat Howarth, bassist, in a fit of creative rage, scoured the dictionary and came up with Slik. Combining that with Toxik, Walsh said "it's about differences, opposites attract, dark and light, ying and yang, smooth and deadly." Ironically, *Smooth and Deadly* was the name of the band's four song EP released late last year.

The 13-song album "Doin' The Nasty," starts off with a rousing party song "Big F***in' Deal." This moves into "Helluvatime" which was written based on the band's experience playing the Toronto bar scene. "Cherry Bomb," inspired by the movie *Blaze* and stripper Blaze Starr, is a

rocking country boy type of song. Walsh said "it's one of those songs that's a rockin', boppin', bluesy, swinging tune. If you want to talk about drinking songs, this is a drinking song."

"White Lies/Black Truth" starts off acoustically, then develops into an anti-cocaine anthem. "It's basically about cocaine addiction. It's about the trials and tribulations that come with that devil's dust. It's from impersonal experience as well as personal experience, just being around it and seeing what it can really do."

The song "It's Not Eazy" ties in with the cover art for the album, which depicts a bathroom, in which there are various nasty things going on. Walsh stated that "the album cover has a lot to do with our songs." Drummer Neil Busby said "even the center booth is a reference to 'It's Not Eazy' which has a line 'praying to the porcelain god.'" Walsh added "the candles and everything make it a production, just to go and puke. It's an altar thing."

The band, and Walsh in particular, feels that Toronto could be the next big city for bands, as Seattle is now, with bands like Queensryche, Nirvana, Alice in Chains, and others. Walsh stated "every place has its time and day. Toronto is going to be happening soon, because a lot of people we know in bands have just recently been signed, or are about to be signed. Bands used to sign deals that only covered Canada, and they were never heard from. Now people are gaining insight on the business, and looking towards the south. You're going to see an onslaught of Canadian bands in the next year or two, especially from Toronto."

Walsh's predictions will make the next year seem like heaven for rock fans. If you like good, old-fashioned, ass-kicking, party-time rock n' roll, get Slik Toxik's "Doin' The Nasty," buy a two-four, and crank your stereo to 11. Sounds like a good time, eh?

Tap into Tap

This one goes to twenty



Spinal Tap
Break Like The Wind
MCA Records

By JEFF DAMIANO
Anchor A&E Editor

It's been eight years since we've heard anything from the Spinal Tap clan, and they've been busy. Guitarist Nigel Tufnel spent some time in the Swiss Army where he received one of those neat little knives and training in the use of squirt guns in a fire fight. Bass player Derek Smalls formed a Christian rock band called *Lambsblood* and recorded some jingles for the Belgian Milk Board (Milk. If it was any richer, it'd be cream). David St. Hubbins married former Tap manager Jeanine Pettibone.

Most of the other former Tap members are now dead. The band itself was reformed at the funeral of former manager Ian Faith, who died of embezzlement. Keyboardist Vic Savage was killed upon visiting the grave of deceased drummer Mick Shrimpton when said grave exploded. It was later learned that Savage had once been a drummer himself but never told anybody. Drummer Joe "Mama" Besser, who ended Tap's last U.S. tour with the band, was most likely sucked into another dimension. Like so many other explosions and gardening accidents, this can not be explained.

Spinal Tap entered the first stages of a comeback last year when they held auditions to fill the drumming position. The winner of the competition was Rick Shrimpton, brother of the late Mick. He entered the project during recording, after the drum machine kept breaking down. In addition to Rick, the band is holding drummer auditions in every major city in case there is an incident during a show in the upcoming tour. A new drummer will be on call so the gig won't have to be canceled. In a band like this, they can't miss a beat.

The latest album, *Break Like the Wind*, continues the heavy metal sound Spinal

See TAP on page 14

THE PERFORMING ARTS SERIES PRESENTS

MOMIX



"Dancers of Astonishing Talent and Ingenuity"
Tuesday, April 28th — 8 p.m. — The New Yorker
Roberts Auditorium, Rhode Island College
Rhode Island College Students with ID only \$4.00!
Limit 2 tickets per ID.
Charge by phone — Mastercard/Visa accepted
Call 456-8194



Funded in part by a grant from the New England Foundation for the Arts, with additional support from New England Telephone, the Rhode Island State Council on the Arts, and the National Endowment for the Arts.

Somebody's BIRTHDAY

Coming Up?

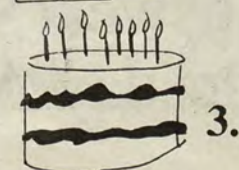
You should let everyone know

Tell It To The Anchor

With Birthday PERSONALS

Only \$1.00 for 15 words

If you want to be creative,
add clip art for 50¢



Name: _____

Social Security # _____

Message _____

Clip Art # _____

What's Happening

For the week of April 13 through April 19

By PATRICIA PRATT
Anchor Editor

Monday

A **Resume Writing** workshop is scheduled for 11 a.m. to noon today in Craig Lee 054. Call Career Services at x8032 to sign up ahead of time.

Comedy Cafe continues in the Coffeeground, tonight at 9. And, it's free! Opening act is Paul Elwel and headliner is Mary Martha.

The Avon, 260 Thayer Street, Providence, is showing the film **Hearts of Darkness**, an extraordinary, behind the scenes account of the making of the film *Apocalypse Now*. The documentary retells the problems that beset *Apocalypse's* production. In 1991, Gene Siskel called **Hearts of Darkness** "the best movie I've seen this year." See why tonight through the 16th. Showtimes vary, call 421-3315 for details.

Tuesday

The Committee for RI Chamber Music will present **Shifrin Neubauer-Vallecillo** this evening at 8 in Alumnae Hall at Brown University. The performance will include works by Bruch, Brahms, Benjamin and Mozart. Tickets will be available at the door and are priced \$14, \$17 and \$20. Call 863-2416.

It's New Music Night in the Coffeeground. Sounds of tonight's guest, **Fuzek-Rossoni**, begin at 9 p.m. Admission is free.

The Custom House Tavern, 36 Weybosset Street, downtown Providence, is hosting musical guests **The New Don Culp Quartet**. Show begins at 9 p.m. \$3 cover.

Wednesday

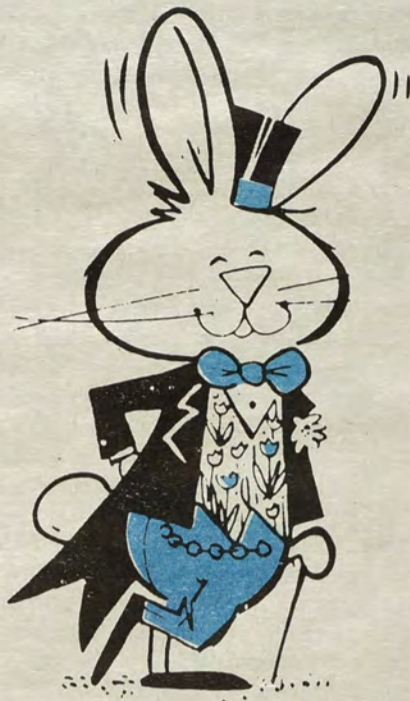
As part of Rape Awareness Week, a one-hour **self-defense workshop** will be held this morning from 10 to 11. Anyone interested can meet at the Women's Center, the lower floor of Donovan or call x8474.

Who's that performing in Donovan today? It's **Ron Runner**, Noontime Series guest. He'll be harmonizing from noon to 1:30 p.m.

RIC's Music Department continues its Chamber Music Series, with **Sinfonia Camerate**, chamber orchestra, and Daniel Harp conducting, performing in Roberts 137 at 1 p.m. Admission is free.

Writing: RI: Imaging the Landscape, a reading by Ann Hood, novelist, is scheduled for this evening at 8 in the Faculty Center.

RIC Student Film Society presents the now controversial film **Madonna: Truth or Dare** in the Student Union Ballroom at 9 p.m. Admission is \$2 if you're without RIC-ID, or \$1 with RIC-ID.



Thursday

The Miracle Worker, by William Gibson, is being performed by URI Theatre today through the 18 and the 22 through the 25. Curtain time is 8 p.m. There will be a signed performance tomorrow evening at 8 p.m. Performances are at URI's Robert E. Will Theatre. Admission is \$6 general admission, \$5 students and senior citizens, and \$3 for children under 12. For additional information, call the box office at 792-5843.

Friday

All Friday's are good. But this one was so special it was named "**Good Friday**."

A **Good Friday Walk for Hunger** is scheduled for today. Leave RIC at 8:30 a.m. from the Student Union. If interested, call x8168 for more information.

Saturday

It's **Passover!** I know, it began yesterday at sundown, so this is probably old news. But I wanted to mention it anyway.

Prom '63, a "Murder at Eight" dinner theatre production, a humorous interactive murder mystery is being held at the Barnsider on South Main Street, Providence tonight. Doors open at 7:30, dinner and show begin at 8. Tickets are \$29.95 and \$34.95 and include a four-course meal, show and tax. For information, call 781-9746.

Sunday

Don't put all your eggs in one basket today! And, don't leave home without your bonnet! Why? It's **Easter!** Happy Easter everyone.

Murphy & McCarthy are tonight's musical guests at the Custom House Tavern, 36 Weybosset Street, downtown Providence. Show begins at 9 p.m. \$3 cover.

Are you perceptive enough?

If so, you can win a large one topping pizza from:

Classic Pizza Plus
1818 Mineral Spring Avenue
N Providence, RI
353-5100

Just find the fake ad. Somewhere inside this issue is a fake advertisement. Find it and win.

Be one of the first two people to come to the Anchor with the right answer (Student Union Room 308) on Wednesday April 15th after 1:45.



HIT LIST

April 12, 1992
Request Line
456-8787

Rhode Island College - 600 Mount Pleasant Avenue
Providence, Rhode Island 02908 - (401) 456-8288

LAST WEEK	THIS WEEK	TITLE	ARTIST
3	1	Breakin' My Heart	Mint Condition
5	2	Ain't 2 Proud 2 Beg	TLC
10	3	My Lovin' (You're Never Gonna Get It)	En Vogue
6	4	Make It Happen	Mariah Carey
1	5	Save The Best For Last	Vanessa Williams
7	6	Everything About You	Ugly Kid Joe
8	7	What Goes Around Comes Around	Giggles
12	8	Live and Learn	Joe Public
2	9	Tears In Heaven	Eric Clapton
4	10	Mama, I'm Comin' Home	Ozzy Osbourne
11	11	Everything Changes	Kathy Troccoli
24	12	Bohemian Rhapsody	Queen
14	13	We Got A Love Thang	Ce Ce Peniston
16	14	I'm The One You Need	Jody Watley
20	15	One	U2
9	16	I Can't Dance	Genesis
--	17	Jump	Kriss Kross
21	18	Under The Bridge	Red Hot Chilipeppers
23	19	Thought I'd Died...	Bryan Adams
13	20	Masterpiece	Atlantic Starr
27	21	Lets Get Rocked	Def Leppard
17	22	Too Much Passion	The Smithereens
26	23	Hell or a	Brotherhood Creed
--	24	Money Don't Matter 2 Night	Prince and the N.P.G.
28	25	The Choice Is Yours	Black Sheep



Anchor photo by Julie Griffin

"Twice Removed" played at the Coffeeground Tuesday night for New Music Night

4-25-92
WEBER BEACH

CHECK OUT RIC'S
BEST BANDS BATTLE
IT OUT!

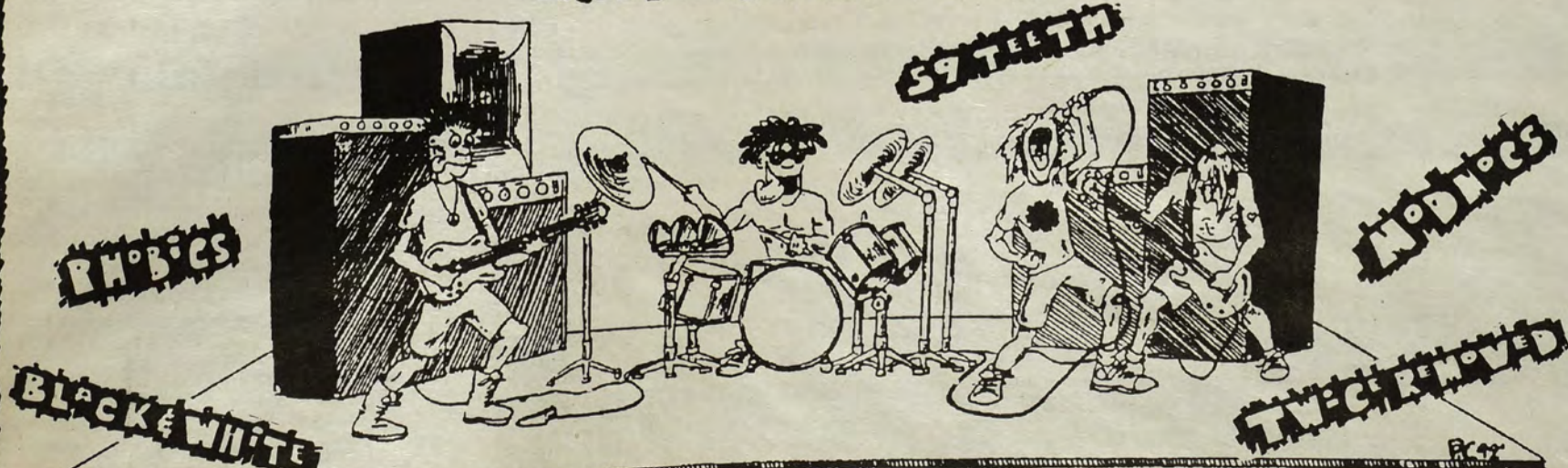
CONGRATULATIONS
TO OUR FINALISTS

**RHODE ISLAND COLLEGE
PROGRAMMING**
RIC - END
2ND ANNUAL
ROCK HUNT
1992

12:00 NOON
FREE!!!

FOR MORE INFO
CALL
456-8045

T-SHIRTS
\$5.00



SPONSORED BY RIC PROGRAMMING



Catie Curtis plans concert encore for RIC

Catie Curtis will be returning to Providence for a Soundwaves concert encore on April 18 at RIC's Student Union Ballroom. Laurie Goldsmith, another Boston talent, will be featured as Catie's opening act. Catie performed at RIC last summer and promised to return for a full-length concert.

Catie is a talented singer/songwriter who offers a mix of folk, blues and rock. Her first album, *Dandelion*, is delightful, but does not go far enough to capture the way she captivates an audience. Her second album is scheduled to be available in time for her RIC concert in April and promises to be a hot item at the record sales table. Last year in *Sojourner*, Catie was labeled "Boston's best kept secret since Tracy Chapman." She was the performer most cited last year in the Soundwaves Forms in response to the question "Who would you like to see in the future?"

Laurie Goldsmith is best known for her folk originals that have warmed the Boston stages for over 40 years. Laurie has two albums out, the first simply titled *Laurie Goldsmith*, released in 1988, and her recent second release, *After the Storm*, is a blend of jazz, blues, rock and reggae styles.

The event is co-sponsored by the Rhode Island College Women's Center and is part of a week-long Rape Awareness Program. For more information about the events of the week, call the RIC Women's Center at 456-8474.

Advance tickets are on sale at the Dorrwar Bookstore and the RIC Women's



Catie Curtis

Center through Friday, April 17 at \$8 each. Tickets will be on sale at the door, starting at 6 p.m. on Saturday at the Student Union Ballroom for \$10 each. A limited number of student tickets are available at the RIC Women's Center for \$5

each. For more information or to arrange for mail order tickets, call (401) 433-0560.

The concert will begin at 8 p.m. and the artists will be selling albums during intermission and will be signing albums after the concert.

SPINAL TAP continued from page 11

Tap was using on their last release *Smell the Glove*, but the band says they're not ignoring their past. They may do some of the older psychedelic music live if they eat something weird. Who knows with these guys.

The album kicks off with the first single, "Bitch School." The song was originally controversial until people realized that it is about a dog obedience school. Lyrics include stuff like "no more sniffing strangers or running free at night/ you think my bark's bad, Honey- wait 'til you feel my bite."

Next up is "The Majesty of Rock," an anthem-y type song. Tap tries to bring the world together with music and such classic words as "it feels so real you can feel the feeling," and "I know for I told me so." Ok, so Lennon and Mc Cartney they aren't, although "Rainy Day Sunshine" has a slight "I Am the Walrus" ring to it. It contains one of the most interesting instrumental sections ever recorded, sort of doing a duet with the guitar.

Break Like The Wind features an all-star cast in addition to Spinal Tap. Dweezil and Cher helps out with vocal tracks on "Just Begin Again." The guitar solo on the title track was produced by Slash of Guns 'N Roses, Steve Lukather of Toto, Joe Satriani, and Jeff Beck. This was supposed to be a surprise for guitarist Nigel Tufnel's birthday but he cried for four days when he discovered they erased his original solo.

"Stinking Up the Great Outdoors" may sound like an environmental song but it's actually about Spinal Tap. "Late afternoon in the open air/ A human sea made out of mud and hair/ Ain't nothing like a festive crowd/ there's too many people so we play loud./ Touch down, plane's on the ground/ Lcok for the drummer, he's nowhere to be found/ running late at least an hour/ no time to rest no time to shower."

The album ends with three special tracks, "Christmas With the Devil," "Now Leaving on Track Thirteen," and "All the Way Home." "Now Leaving..." is a tribute to hotels. It's not listed on the album for superstitious reasons. It's all about death and the after life. "Shall we be released and float towards the light/ like a wee little dove or a really good kite."

All in all, this is a good album if you know what you're looking for, but you should try to hear a good portion of the album before purchasing it unless you know what to expect from Spinal Tap.

For the record, there will be no *Break Like the Wind II*. All available copies were hijacked by a radical terrorist group calling themselves The Cocker Army Brigade in retaliation to the band's alleged support of animal experimentation. They thought the band was called Spaniel Tap. *Break Like the Wind* was originally an album trilogy but the band decided to just release the first album before it disappeared all together.

The music sounds generic but the humor is there. If you're interested "Rise! For you are cream," as Tap would put it, and go get this one. It gets four Anchors on a scale of one to five.

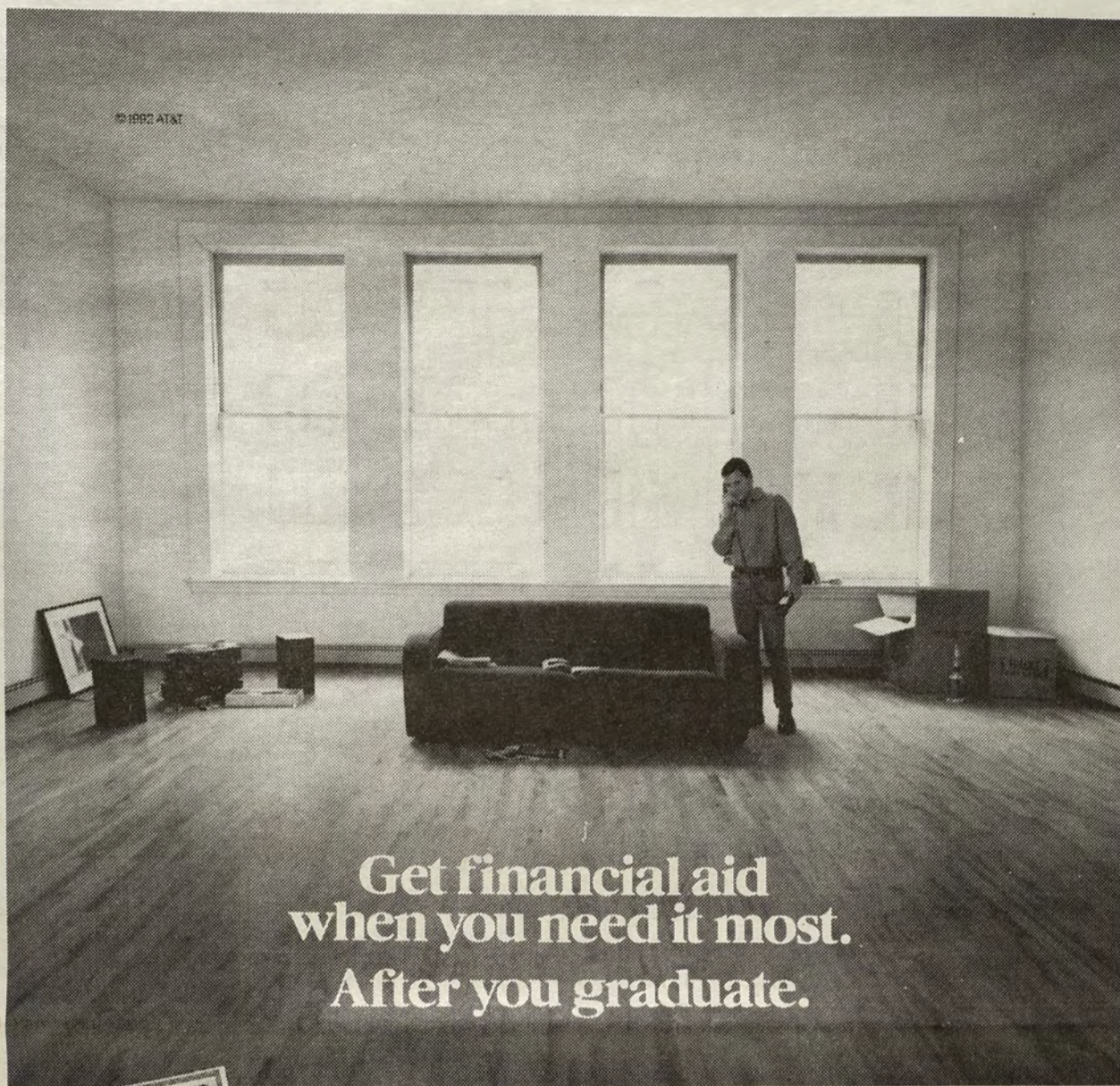
Will They Let You In? You Hold The Key.

It takes a special kind of adult to get through to a troubled adolescent. If you think you have what it takes, we'd like to talk with you. We're The Key Program, Inc. the region's leader in residential and outreach services for troubled and court-involved teens.

When you join our staff of caring, competent human service and criminal justice professionals, you'll call upon your insight, compassion and listening skills to reach into these young lives and make a notable difference in their futures.

To join us in our work, you'll need a Bachelor's degree in a related Human Services field, plus a car and a valid driver's license. You'll enjoy our extensive training, a competitive salary of \$18,000 per year and comprehensive benefits in this unique, 14-month position. Relocation assistance is available; positions are located throughout Massachusetts, Rhode Island and Southern New Hampshire. **Please send a resume to: Personnel, The Key Program, Inc., 670 Old Connecticut Path, Framingham, MA 01701.** An Equal Opportunity Employer.

THE
KEY
PROGRAM, INC.



**Get financial aid
when you need it most.
After you graduate.**



Life doesn't suddenly become easy when you get out of college. There are the challenges of starting a career, getting settled in a new apartment and doing it all within your budget.

So to help you out, we put together the **AT&T Moving Ahead Program**.

When you sign up*, we'll send you a \$5 **AT&T Long Distance Certificate** worth 35 minutes of AT&T long distance calling**. And every time you move and choose AT&T or switch from another long distance company, you'll get even more savings benefits.

Since you'll probably be traveling more, you'll also get an **AT&T Calling Card** sent to you, free. It helps make



calling from payphones easier and you don't have to replace it when you move.

You'll also have the opportunity to save on AT&T long distance calls with the **AT&T Reach Out® America Calling Plan**.

Even our **Moving Ahead** newsletter can help. Besides being full of tips on things like managing your money and job hunting, it includes chances to save on the latest clothes, your favorite CDs and more.

Just call **1 800 662-2610, Ext. 3835** to join the **AT&T Moving Ahead Program**.

And get a little extra help after school.

*There are no enrollment fees. **Based on an AT&T direct-dial, coast-to-coast call made during the night/weekend time period within the continental U.S. You may get more or less for your certificate depending on when and where you call.



AT&T

Suburban White Alcoholic Trash

Ugly Kid Joe
Ugly As They Want To Be
Star Dog/Polygram Records

By JEFF DAMIANO
Anchor A&E Editor

Has anybody turned on MTV lately? Have you seen the video with the surfer-type dudes flying the blow up sex doll on the beach? They're Ugly Kid Joe and although they don't have a complete album out on the market, their ep, "Nasty As They Want To Be" is making huge stars out of them. The disc is already platinum, they're played heavily on MTV and they've landed the opening slot on the next Ozzy Osbourne tour.

The band is made up of five former UCLA students. The name came about when they were signed for their first gig opening for Pretty Boy Floyd. They thought it would be ironic for Ugly Kid Joe to open for Pretty Boy Floyd. As luck would have it, the show was canceled but UKJ stuck.

The album begins with carnival sounds which kick you into "Madman," the song that got UKJ booted off the new Pauly Shore movie soundtrack. This happened because the movie is done by Disney Studios and the song is about a psychopath tripping out on LSD in Disney Land and, of course, killing people. The idea for the song came about because Disney is such a happy place and you'd never expect something like this to happen there.

Vocalist Whitfield Crane makes the



song when he sings, "Knife wieldin' no feelings axe wieldin' child stealin' madman is loose...in Disney Land." He lets it rip on "loose" with no regard to damage to his vocal chords. This is done several times throughout the song and they really stand out. The song sets the groove which is maintained throughout the rest of the album.

The second and third tracks deal with alcohol and drug abuse, respectively. "Whiplash Liquor" is a catchy song. It's just one of those "go out and get drunk tunes" but it's a decent track. "Too Bad" contains some of the best lyrical writing on the album although the song itself is only mediocre. "So many highs and lows right now/ what are we to do/ you know we're trying so damn hard/ Johnny just to talk to you/ you're swimming in an ocean/ it's so black and cold/ I feel you got the notion/ and it's eating at your soul."

"Everything About You." You've heard it, you must have. The reason the song is

so popular is its universal appeal (is that an oxymoron?). Although it doesn't have the musical style to open it to as many markets as last year's "More Than Words," most people can deal with the topic which came to UKJ from a friend of the band who, you guessed it, hates everything.

"Sweet Leaf/ Funky Fresh Country Club" starts as a cover of the old Black Sabbath classic. Once again Crane's vocals stand out as he hits this song better than anybody has ever sung any Sabbath, original or cover tune, since Ozzy himself. When the song switches over to "FFCC," the bass playing ability of Cordell Crockett kicks you in the face. The bouncy sound of the instrument helps make this one of the fullest tunes on the disc. The lyrics follow the circle of go out, get in a fight, get arrested, sprung, and do it again.

By the time a full album is released from Ugly Kid Joe in July, they will have already been on the road for two months with the madman of rock 'n roll, Ozzy Osbourne. As past opening acts (Motley Crue, Metallica, Anthrax, etc.) can attest to, this is one of the most desirable positions you can be in as a starting band. The tour, along with MTV coverage, loads of radio play, and tons of sales will make Ugly Kid Joe one of the heavy hitters in no time.

On the scale of one to five Anchors, "Ugly As They Want To Be" earns a heap-five. Get it before it gets you.

Blur Is Clearly Better Live

Blur
Leisure

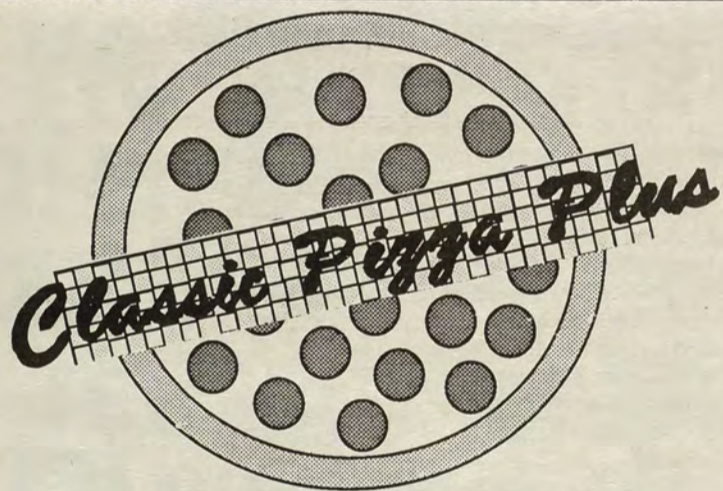
By GARY COLLINS
Anchor Contributor

Blur are part of the whole new wave of British pop bands who rely on post-psychedelic music and an abundance of guitar effects to create an atmosphere rather than just a basic guitar sound. Blur tends to lean towards distinct guitar hoods and Pink Floydian melodies. Their music is good enough to satisfy fans of British pop but not good enough to gain a distinct measure of popularity for two reasons.

The first problem is that the album is over-produced. According to the reviews I read, Blur thrives in a live setting, generating musical and physical excitement. If this is true then their album should have been a live recording with the audience erased or at least let the band record a more raw album. As it is, the music on the record is too sterile and the guitar hooks are watered down and the melodies are smoothed over, so none of the songs really grab your attention.

The second problem is that this is an obvious attempt by a major label to cash in on a current musical trend by snatching up some fresh, young band, marketing them as an "alternative" band and put out a product in order to make some money before the fans become interested in someone else.

All in all, though, the music is good. My advice is to skip the album and go see Blur live when they play at Club Babyhead on April 22.



1st Anniversary Special:

Medium Cheese
Pizza Delivered
\$3.95

Limited Time Only

1818 Mineral Spring Ave.
N. Prov, RI

Located next to N. Prov High School

353-5100

MUSIC

We now have
cassettes and
CD's in stock

Cassettes start at \$3.99

The
CAMPUS
S•t•o•r•e



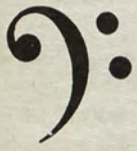
RIC Programming Presents:

Tuesday, April 14th

New Music Night

Fuzek - Rosoni

9pm in Coffeeground



Wednesday, April 15th

Noontime Series

Ron Runner

12-1:30pm in Donovan



Friday, April 17th

Good Friday Walk for Hunger

leave RIC at 8:30am from SU
call X8168 for more info.

sponsored by Chaplain's Office

Wednesday, April 15th

Film Society Presents:

Madonna: Truth or Dare

9pm in SU Ballroom



RIC-END

OLYMPRICS: LET THE GAMES BEGIN!!

Monday, April 20th

Red Sox Trip vs. Toronto Blue Jays

bus leaves at 9am from SU loop
tickets on sale at Info. Desk

The Smithereens w/ Tom Cochrane

9pm in Donovan

tickets on sale at Info. Desk

Monday, April 20th

Creativity in the Classroom

presented by Doug Cureton

1:30pm in SU 306

(FOCUS CREDIT!!!)

OlympRICS



**DONOVAN
DINING
CENTER**

MENU

**DIAL-A-MENU
x8293
FOR THE
COMPLETE
DAILY MENU**

Tuesday

Breakfast

Egg McMuffin
Bacon
Homefries

Lunch

Sweet & Sour Chicken
Steamed Rice
Stir Fry Veg.

Dinner

BBQ Pork Ribs
Cottage Fries
Corn Cobbets

Wednesday

Breakfast

French Toast
Sausage
Homefries

Lunch

Stuffed Sole
Rice Pilaf
Mix Veg.

Dinner

Roast Beef
Mashed Potato
Green Beans

Thursday

Breakfast

Croissant Sand.
Ham
Homefries

Lunch

Pork Chops
Whipped Potato
Buttered Peas

Dinner

Lasagna
Zucchini

Friday

Breakfast

Omelet
Bacon
Homefries

Lunch

Fish Cakes
Macaroni & Cheese

Dinner

Baked Scrod
Rice
Sliced Carrots

Monday

Breakfast

Pancakes
Bacon
Homefries

Lunch

Sheppard's Pie

Dinner

Roast Pork
Baked Potato
Stuffing

Seeing the facts through the smoke

The current election season and accompanying media blitz has left the American public with more questions than answers about the presidential candidates. The current campaign seems devoid of issues. What each candidate stands for has not yet been clearly defined. What has been made clear is that a candidate's past is often times more important than what he has done in recent times.

While a candidate's past may be important in establishing his character, how relevant is something that happened 20 years ago to today's elections? Does Gov. Bill Clinton's admission to trying marijuana once mean that he is not fit to lead our nation? Before any judgment can be made on a candidate, the voters first have to look at the information before them.

Clinton admitted to trying marijuana while in college during the sixties, when the use of that drug was widespread. When an action took place can be the most important factor in weighing the facts. The voters must take this into consideration before forming an opinion of a candidate.

When the story is released is another factor that can not be ignored by the voters. Information released the day before a major primary or caucus often times comes from an opposing party. This too must be carefully looked at by the voters.

If voters take away the negative campaign ads and 10 second sound bites, they can see where a candidate stands and if he is capable of leading our country.

Why pay good money for **Phone Sex** when you can call **RICALL**, the phone registration system, and get **SCREWED** for FREE!



1-900-456-8800

Phone call is free, but you will be billed \$94 per credit plus unspecified surcharges, text book taxes, a \$150 antidote for the dining center food, \$8000 for the school's "new" logo, and hundreds in parking fees! Call now! There's no better deal in town!

Tax Inequities and higher tuition spell trouble for students

Dear Editor,

Are you aware that middle and low income families in Rhode Island share a disproportionate amount of the tax burden? Traditionally, people believe that taxes should be progressive -- that is, the more you make, the more you pay.

However, in Rhode Island, it has not worked this way. According to Ocean State Action, "middle and low income families pay a 51% and 91% higher share of their income in taxes, respectively, than do the wealthiest people in the state." The tax structure in Rhode Island is unfair to middle and low income families.

This will affect you as a student at Rhode Island College. The proposed budget for next year calls for significant cuts to higher education, a tax on textbooks and a reduction of services. The proposed budget could also result in an increase (in) tuition to make up for lost revenues. This means you will have to pay more out of your own pocket.

Ocean State Action is sponsoring the Working Family's Tax Fairness Act of 1992 which would raise personal income taxes on the wealthiest three percent of Rhode Islanders -- those with incomes of \$100,000 or more. This plan would raise \$65 million. The money could be used for education and human services that would be otherwise cut if this bill does not pass in the General Assembly.

Students for Tax Fairness, a group of social work students at RIC, is working to make this a reality. Don't simply lie down as your expenses go up! You can stop by our table, receive more information and sign a postcard to let the Governor, the Speaker of the House and your own state representative know how you feel. Come see us at the Student Union second floor landing or on the mall Wednesday through Friday this week and next.

Maria Santos and Lynne Marcet
Students for Tax Fairness

Inquiring Photographer comment: "a joke"

Dear Editor,

It has come to my attention, thanks to fellow classmates...that my comment toward the female population in last week's Anchor (April 6, "Inquiring Photographer," page 5) was not taken in good

humor. I would like the female population of Rhode Island College to know that it was meant to be a joke and I'm sorry if anyone took offense.

Sincerely
Dave Borrelli



Anchor Line 456-8544

Editorial response concerning a comment made by Sports Editor, Rosie Comforti, in her gambling commentary: (The Connecticut General Assembly) did not approve the Ledyard Casino, anticipating the revenue

to help the economic situation. If you investigated this like a responsible reporter should, you would know that the casino is run by Indians and is located on Indian reservation land. The land is not state owned and if you knew anything about Indian businesses, they do not pay any taxes or revenue to the state of Connecticut.

Signed "Annoyed Connecticut Resident"

Editor's note: Although the state of Connecticut won't directly benefit from the revenue of the casino in Ledyard, the author felt that the Connecticut General Assembly took into consideration the increased revenue the region would receive from increased tourism. The point that the state is still conducting legalized gambling is valid.

The Anchor

Executive Editor
Jennifer Hazard

<p>News Editor John Valerio <i>News Staff:</i> Belinda D'Abreu, David B. Efros, Eileen James, Lynne Michael, Diana Peña</p> <p>Sports Editor Rosie Comforti <i>Sports Staff:</i> Eric Barna, Jeff Brodeur, Tracey-Ann Currie, Paul Doyle, Chuck McGinnis, Susan Perrott, Sherrie Pont, Greg Woleck</p> <p>Arts & Entertainment Editor Jeff Damiano <i>Arts & Entertainment Staff:</i> Tracey-Ann Currie, Jeff DeAlmo, Jeffrey Deston, Julie Dickinson, Alan Gunther, Susan Russo</p> <p>Photography Editor Stephanie Ridley <i>Darkroom Assistants:</i> Jeff Sheffer, Lauren Shroyer <i>Photography Staff:</i> Brenda Belluso, Kerri Curcio, David B. Efros, Julie Griffin, Michael Pacheco, Dino Soscia, Jeff Sheffer, Peter Ventrone</p> <p>Graphics Editor David Lineberger <i>Graphics Staff:</i> Alan Gunther, James McDermott</p>	<p>Managing & Business Editor Patricia Pratt <i>Office Staff:</i> Jeff Sheffer</p> <p>Advertising Editor Jeff Wallace <i>Advertising Assistants:</i> Kara Chapman, Ellen McDonald</p> <p>Copy Editor Jennifer Hazard <i>Proofreader:</i> Marshall Allen</p> <p>Layout & Design John Valerio & Jeff Wallace <i>Layout Assistants:</i> Harry Karibian, Susan Dufresne</p> <p>Public Relations Manager Al Gunther</p> <p>Distribution: Eric Barna</p> <p>Faculty Advisor: Dr. Moyne Cabbage</p> <p>Professional Advisor:</p> <p>Printed at: TCI Press, Seekonk</p> <p>Member: College Press Service</p>
--	--

The Anchor is located in the Student Union, room 308 • 456-8280

Anchor Submissions Policy

Letters to the editor must be received the Thursday before intended publication date. Letters should be kept under 250 words.

the opinions of the paper, or the editorial board.

The Anchor will attempt to print every letter received. Any letter deemed inappropriate by editorial decision will not be printed. The Anchor reserves the right to edit all letters, commentaries and 'Anchor Lines' comments for space and libel. Submissions in this section of the paper, with the exception of the editorial, are printed on a contributor basis and do not necessarily represent

All letters, with exception to the 'Anchor Line', must be signed and include a phone number and Social Security number for verification purposes. Any unsigned Letters to the Editor will be considered for the 'Anchor Line' space.

Editorial decisions for the Anchor are made by the majority vote of its student editorial board. No form of censorship will be imposed. Any material found to be unsuitable or unacceptable in the board's opinion will not be published.

**Write.
Write to us.
Write for us.**

**Whatever you do,
do it right now.**

The Anchor, Student Union room 308 • 456-8280

THE SMITHEREENS

blow up • WORLD TOUR



with special guest TOM COCHRANE

Monday • April 20 • 1992 • 9:00pm
 Rhode Island College • Donovan Dining Center

Tickets \$5.00 with RIC ID • \$10.00 without
 available at the Student Union Information Desk

Presented by RIC Programming • For more information call (401) 456-8822 or 8821





AND
RESIDENT STUDENT ASSOCIATION
PRESENT

THE SECOND ANNUAL 1992 SPRING COTILLION PRIZE PACKAGE

INCLUDES:

- TICKETS FOR TWO PROVIDED BY R.S.A.
- LIMOUSINE FROM SENTINEL LIMOUSINE
SMITHFIELD
- FLOWERS BY EM ROSE FLORIST
NORTH PROVIDENCE
- PHOTOS BY MARE STUDIOS
- ROOM FOR TWO AT THE MANSFIELD HOST HOTEL
MANSFIELD MASSACHUSSETTS

HOW TO WIN:

LISTEN TO DAVE MORRIS
WEDNESDAY APRIL 15TH FROM 4PM TO 7PM
COUNT HOW MANY TIMES YOU HEAR THE DUCK
(quack, quack)

CALL 456-8787 WHEN DAVE TELLS YOU
AND WIN!!!



On behalf of the rest of the state,

Cheese's Spread

would like to welcome **JOE MOLLICONE** back to Rhode Island.*



*Quoted as being the third most unlikely event in the universe (after the collapse of communism and the dismantling of the Berlin Wall) by Dr. Arch-Reverend Father Wilhelm O'Roarke, Anabaptist Archnun of the Most Holy and Divine Blessed Holiness of Our Sacred Divinity Church in Providence, R.I. "The end is near! Prepare for the second coming of the Lord!" he added, on his way to his therapist.**

**Insert "Welcome Back, Kotter" theme here.

GRAPHICS EDITOR'S QUOTES of the WEEK:

- "The only thing we have to fear is dangerously bald tires."
- "A bowling ball gathers no moss."



JOE MOLLICONE EXPLAINS WHY HE CAME OUT OF HIDING

WARPED WORLD 0.5

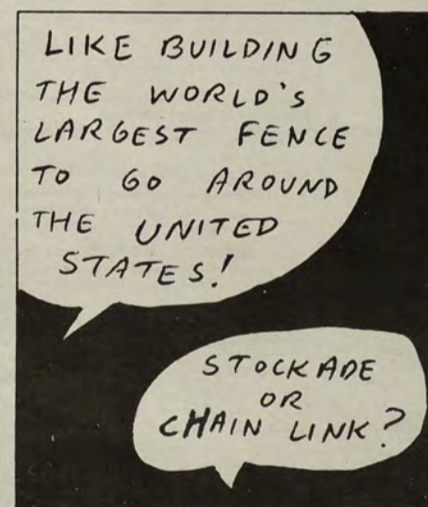
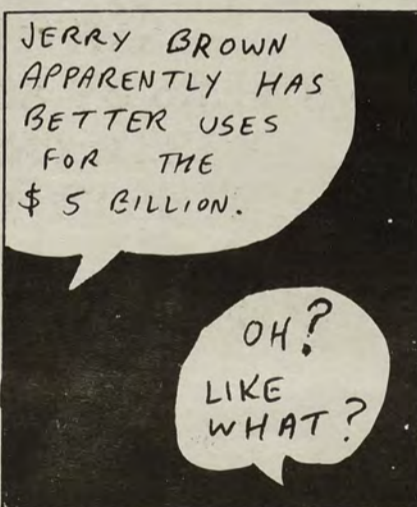
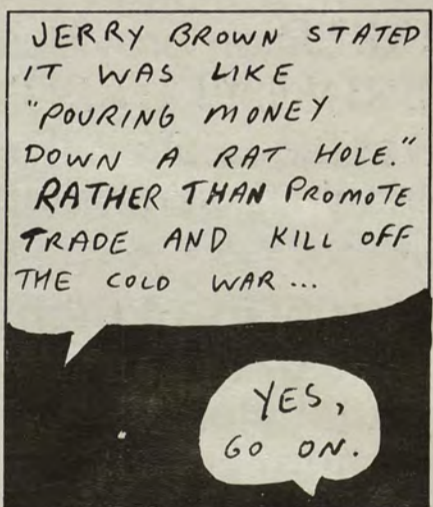
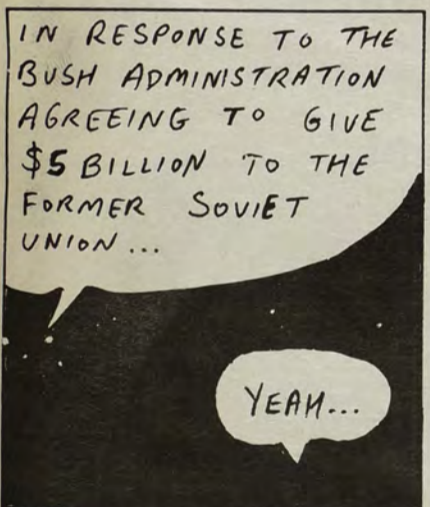
©1992 ALAN GUNTHER



On the Cover: Detail of an Indonesian stick puppet. (See page 10)

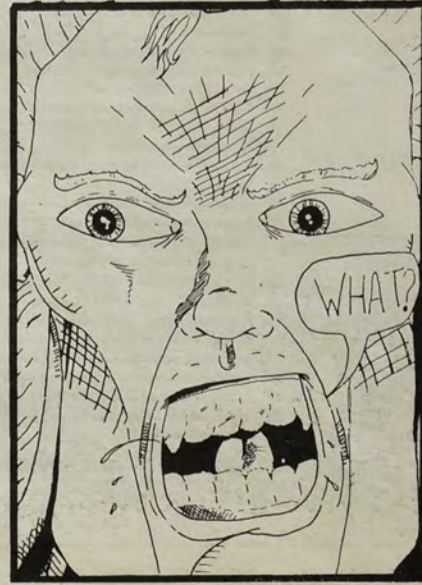
DARK HUMOR

©1992 ALAN GUNTHER



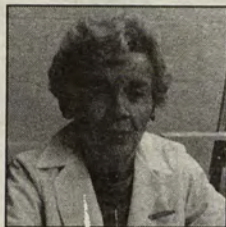
STEEL PUMA

©1992 JAMES McDERMOTT



Health Questions and Answers

Watching out for foods that cause heartburn



Kay Gallagher

Q. I'm having a lot of trouble with heartburn lately. I went to

the doctor for a check-up and he said to ask you concerning foods to avoid. Could you give me a list?

A. First of all, you may be eating too fast- so slow down. Meals should be on the light side. It might help to avoid chocolate, onions, garlic, peppermint, coffee, and carbonated beverages. Don't eat before going to bed. Stop by the office and see me.

Q. I've lost a few pounds since I last met with you. I live in fear of gaining the whole thing back. Could you give me some more help?

A. Continue with the same food pattern- it seems to be working. I hope you are still exercising, without it you might weigh less because of muscle loss, not fat loss. As we discussed, exercise must be aerobic to burn fat. Call me and we will set up an appointment to go over it again.

Q. I think I'm a victim of "sweet toothitis." I can't resist desserts- up to three at one sitting. Help!

A. Sugar is one of nature's blessings, but it must be used with caution. According to recent studies, the average American consumes about 67 pounds of this blessing a year. You are not alone. For better health get on the low side of this figure and reach for one low calorie dessert. You'll love it.

Q. I've been told many times that if I would change my eating habits and do some exercise, I would feel better about myself. But I have so many bad food habits I don't know where to start. What do you suggest?

A. List the habits first- know your enemies. Then mount an attack to cut down on the bad habits. This is not an easy task, but you're making a change in the right direction. Getting in synch with your body takes patience. Come see me.

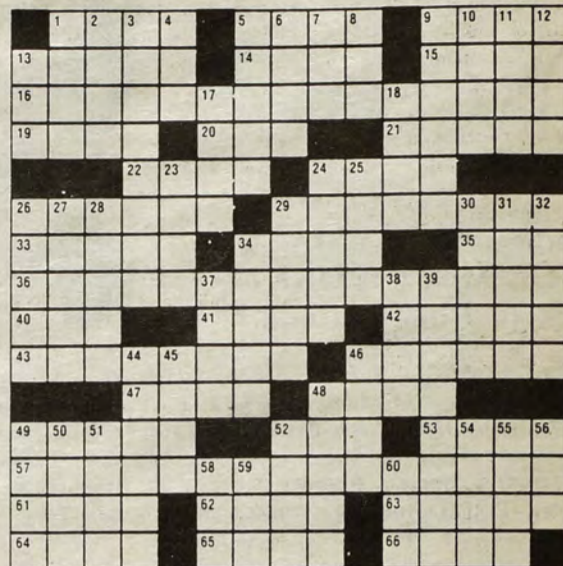
Questions can be submitted to Rhode Island College Registered Dietitian Kay Gallagher in Donovan Dining Center, The Anchor in Student Union room 308 or at The Anchor mailbox at the Student Union Information Desk.

This column is not intended to replace consultation with a doctor. Anyone with serious concerns about his/her diet should contact a doctor.

THE Crossword

by Bernard Meren

- ACROSS**
- 1 Ferber
 - 5 Bartok
 - 9 Prayer wheel user
 - 13 Nose around
 - 14 Elevator man
 - 15 Bedouin head cord
 - 16 Piano novelty song
 - 19 Brainchild
 - 20 One — million
 - 21 Left-hand page
 - 22 Conte
 - 24 TV performer
 - 26 "— goes by"
 - 29 Dry cleaning employees
 - 33 Sen. Thurmond
 - 34 Gardener at times
 - 35 Doris or Dennis
 - 36 Convention VIPs
 - 40 Overhead trains
 - 41 Before: pref.
 - 42 Stephen Vincent —
 - 43 — from (belittles)
 - 46 Removes suds
 - 47 Chi-chi
 - 48 Twosome
 - 49 Meager
 - 52 Make lace
 - 53 Eye part
 - 57 Mayor's gift to a VIP
 - 61 Swiss river
 - 62 Villa d'—
 - 63 Good — (nice guy)
 - 64 Stepped heavily
 - 65 At no time to poets
 - 66 Ernie —



© 1992 Tribune Media Services

- DOWN**
- 1 Arthurian lady
 - 2 Be too fond
 - 3 Margin scribble
 - 4 Zoo attraction
 - 5 Pioneer of yore
 - 6 Lab burner
 - 7 Ignited

- 8 Residue
- 9 L.A. five
- 10 Antiquer
- 11 Diamond great
- 12 In addition
- 13 Schuss
- 17 Afr. river
- 18 Holiday times
- 23 Shot and shell
- 24 Biarritz blintze
- 25 At this place
- 26 Inquired
- 27 Inscribed stone
- 28 Rendezvous
- 29 Mails
- 30 Blissful abodes
- 31 Peep show
- 32 Methods: abbr.
- 34 Writer of children's books
- 37 Diplomacy
- 38 Nichol's protagonist
- 39 Derby site
- 44 Graded

Crossword solution on page 23

- 45 Comic Johnson
- 46 Baseball great
- 48 Stamping machine
- 49 RBI or ERA
- 50 Burn to a crisp
- 51 Flying prefix
- 52 Bag type
- 54 Pill container
- 55 Feminine ending
- 56 Pro vote
- 58 Urge
- 59 Half a fly
- 60 Psychic initials

Trim Your Taxes With An IRA

An Individual Retirement Account (IRA) at Fairlawn Credit Union provides added value!

Advantages of an IRA at Fairlawn Credit Union include:

- Maturity in 14 months
- A rate of 5.25%
- Annual yield of 5.39% minimum certificate amount is \$1000.

IRA savings rates also available.

Call or stop in today and discover all the benefits of our IRA's.

FAIRLAWN CREDIT UNION

Main Office
571 Smithfield Avenue, Pawtucket, 724-2330

Branches
1617 Mineral Spring Avenue, North Providence, 353-6670
850 Waterman Avenue, East Providence, 438-3280
Providence City Hall, First Floor, 861-2450
RI College Campus Center 8 a.m. to 4 p.m every Friday

All deposits insured up to \$100,000. by NCUA
Main Office, North Providence & East Providence Branches Open Saturdays 9 to 1

Form 1040 Department of the Treasury—Internal Revenue Service 19

U.S. Individual Income Tax Return

Label
Use IRS label. Otherwise, please print or type.

Presidential Election Campaign
Do you want \$1 to go to this fund? If joint return, does your spouse want \$1 to go to it?

Filing Status
1 Single
2 Married filing joint return (even if only one has taxable income)
3 Married filing separate returns. Enter spouse's SSN
4 Head of household (with qualifying person your dependent, enter child's name here)
5 Qualifying widow(er) with dependent child

Exemptions
(See instructions on page B.)
a Yourself If someone (such as your parent) c. But be sure to check the box on line 6a.
b Spouse
c Dependents: (1) Name (last, first, and last name) (2) Check if under age 5

Income
Please attach Copy B of your Forms W-2, W-2G, and W-2P here.
If you do not have a W-2, see page 6 of instructions.
7 Wages, salaries, tips, etc. (attach Form(s) W-2)
8a Taxable interest income (also attach Schedule I)
8b Tax-exempt interest income (see page 11). DON'T
9 Dividend income (also attach Schedule B if over \$1,000)
10 Taxable refunds of state and local income taxes, if any
11 Alimony received
12 Business income or (loss) (attach Schedule C)
13 Capital gain or (loss) (attach Schedule D)
14 Capital gain distributions not reported on line 13 (attach Form 1099-DIV)
15 Other gains or (losses) (attach Form 4797)
16a Total IRA distributions 15a
17a Total pensions and annuities 17a
18 Rents, royalties, partnerships, estates, trusts, etc.
19 Farm income or (loss) (attach Schedule F)
20 Unemployment compensation (insurance) (see instructions)
21a Social security benefits (see page 13)
21b Taxable amount, if any, from the worksheet
22 Other income (list type and amount—see instructions)
23 Add the amounts shown in the far right column

Adjustments to Income
(See instructions on page 13.)
24 Reimbursed employee business expenses from Form 1042-ES
25a Your IRA deduction, from applicable worksheet
25b Spouse's IRA deduction, from applicable worksheet
26 Self-employed health insurance deduction, from worksheet
27 Keogh retirement plan and self-employed SEP, IRA, or SIMPLE deduction
28 Penalty on early withdrawal of savings
29 Alimony paid (recipient's last name and social security no.)
30 Add lines 24 through 29. These are your adjustments to income.

Adjusted Gross Income
31 Subtract line 30 from line 23. This is your adjusted gross income. If you are a child, see instructions. If you want IRS to figure you

For Sale/Rent

Apartment for rent: June, July, August. \$650 a month. No utilities. First floor. Oakland Avenue. 2 bedroom. Any amount of people wanted. 331-4912.

Mount Pleasant Avenue area, 4-bedroom, laundry facilities, lighted parking lot, appliances, locked hallways, safe. Available June 1. \$600 per month plus security deposit. 331-5048. Please leave message.

Services

Devan's Stripping Service. "There's Nothing to My Job." Digital pager #276-8080. After three beeps, touch-tone your number and hang up. Stand by, all calls returned promptly.

Affordable typing service. Resumes \$22; Term Papers \$1 page. Professional finish - call Paula 944-1343.

Do you want fast and accurate WORD PERFECT typing at \$2 page? Call TERRIE at 941-3914.

3 BEDROOM APARTMENT -Living room, dining room, second floor, two miles from campus, parking, big yard, laundry. \$550/month. 331-3563.

FOR RENT - 2 bedroom apartment, close to campus, parking, laundry, all students in building. \$475/month, second floor, hardwood floors, big yard. 331-3563.

ROOMMATE WANTED for 2 bedroom apartment. Close to campus, parking, laundry. \$225 per month. I have furniture, TV, stereo, VCR. No pets please. 331-3563.

Cranston: Lovely 2 bedroom new duplex, 1.5 baths, deck, basement, fully applanced, big kitchen and living room, large yard, great area, 15 minutes away from RIC. \$750/month. 946-8237.

1980 Chevy Camaro 305, 4 barrel. Many new parts. \$1200 or best. Call 231-7862.

Jobs

Wanted. Sailing Instructor at Summer Camp. Sailing experience needed. Call Sharon after 7 p.m. Monday through Friday. 397-7285.

Miscellaneous

Discord anyone? Let's create a movement. Only requirements: respect, love for life, humor and the pursuit of worldwide happenings. Dues none. Volunteerism is the key. Robert Anton Wilson "Illuminates" possible source for info.

Personals

Sta, I hate my life, I hate my hair, I hate your hair, why doesn't anybody like me? Can you just give me some change?! You're awesome

Apartments

2, 3 & 4 Bedroom Apartments Available for Next Semester And Next School Year
All One Block From School
Deposit now will hold an apartment
Call
(401)-831-2433

Stace-face! Love, Ka.

Wayne G. thanx so much for the past five months. They have been the best!!! Remember always that I love you 4-life. Always remember "Love of a Lifetime." - Brenda.

You're not like the rest. You like the same things I do - boiled foot-ball leather, dog breath. - I want to bear Ren Hoarkz's child.

Happy Birthday Michael! Love always, Julie (and "chicken") ha ha

Sherri, I don't know about you, but I need a girl's night out. How about Club Coconuts - maybe we will see Tony and he can give us a weather forecast!!! Caroline.

I need a Wally hug and Tara wants a personal.

KT - looks good in Metals class, ain't it?

J.R.C. - How about a back massage? Could I see you for longer than 15 minutes? I'd also like to borrow your Nirvana tape!!!! - Your personal masseuse.

Elvis - can I just say...that you are the best? Thanks for "April!" I LOVE EWE! Bonk! Bonk! Bonk! Heel Heel Heel!

To D, the sexiest girl alive: My buddy says hello. Love ya!

Kiff. What's up guy? Thanks for psyching me up before school Remember, read my letter when I'm not around. You're #1 in my book!! Later!

Hi Moncheechee! Love your personal fan club. Sorry to tell you you don't look like the anti-Christ. You're too cute, cuddly and adorable. Seagulls and can you please explain this.

My favorite Bruce fan - I need a little of your human touch - Tulip.

Suite B: Thanks for the B party even though it was in my robe (just as fun). Love, Kaheen MacGivor Backhad.

Noonie and Moo! London is awesome! Wish you were here! Noonie, how's your carrot? Moo, how's your corn? - The Wanderer + Headbanger.

"Remembering festive Jello!" but why! We're looking for a group of total unique kindly people? (Yes they still exist.) Eric how about clam siphons! Nate - payback is a bitch.

Chuck Mc, (from the Anchor staff): Just to let you know - someone cares about ya! Wanna go out sometime? - My treat! Good luck with rugby...maybe you can explain it to me!

"September morn...we danced until the night became a brand new day-two lovers playing a scene from some romantic play. September mornings sure can make me feel that way..."

Yes, just about every one of these personals contains some kind of hidden sexual message.

Lisa, Darcy, Erin, and Trish: Thanks for making my 21st the best. I couldn't have had a better birthday! You guys are my best friends...I love you guys!

Lise - you're a pretty, pretty, pretty, pretty, such a pretty girl.....yeah!

Yeah...you guys...I loved my flowers and my phone call. (Lisa - have I thanked you lately?)

Who is better than the awesome foursome?...I know...the awesome foursome plus Darcy.

Erin...we need to have a talk on the bridge...just kidding!...(really... I am...)

If you want to win a beach house for 1 week in Scarborough...come to the dance party in the SU Ballroom on April 21, 1992!Tons of giveaways!!!

DD. DDD. DDD...D...D...DDD... DARCY (kidding)

Trish - let's kick butt on Tuesday in class! YEE - HAAA!!!

Ray, I love you, there I said IT.

This week 9 volts live does "The Concert for Life for Freddy Mercury." Hear all the bands live here before they go there. Featuring: Spinal Tap, Gun's n Roses, Metallica, INXS, Red Hot Chili Peppers, David Bowie, Elton John, Queen and more! Tuesday from 10 'til the music ends. Only on WXIN, 88.1 ya know.

"Why do birds suddenly appear, every time you are near? Just like me, they long to be...close to you."

"Until the night, I just might make it...until the night when I see you again." BJ circa 1978, j. today

J.: And you thought I was from sane genes. Sorry to disappoint you. I swear, I am not a product of my environment! -P.

Dee: I've had it with my parents too. Wanna get an apartment?! -P.

J.: Thanks for putting up with everything lately. You are the best. I am very, very lucky. xoxoP.

L.: Just eight more classes of "Ok!" "Right!!!" "Exactly!!!" We've got to start that paper SoOn! -P.

Anyone interested in a hobbling Call Norm Suite K

P. 13-2 I hope Mike busts John about that game forever!

V.M.R.#1- "You've had that cocoon sitting in front of the house forever"

VMR#2- "I'd like you to meet Pip, our mascot"

VMR#3- "Just don't make fun of her dog."

I'm not a midget, I'm vertically challenged.

P. -Bing!!! J.

Sure man sure

This week's ten seconds of fame winner is Pam C. from the Campus Center. You can claim your prize if you have your ad in by Wednesday.

She must be busy...I didn't even get a personal this week.

Has anyone ever written "RIC's Momma" from Donovan a personal. Well, dammit she deserves one!

Honesty is such a lonely word... everyone is so untrue.

It's poetry in motion when she turns her eyes to me...

To the K Macks: E's havin a baby!! Let's celebrate!! DJ TT

To all who are running for exec positions at WXIN: Good Luck. Tiny Ted

Check out WXIN on Wednesday 4-7 those of you who didn't get Cotillion Tix

To GP: Happy B-day!!!! The K-Possee

Julie: Where have you been???

Andre & Vin: we should start our project!!!!

What the HELL is a Jungle Party and why would I want to attend???

I know where Joe Mollicone was hiding out! (but I'm not telling)

RIP Sam Kinison> We did not know you but we will miss you.

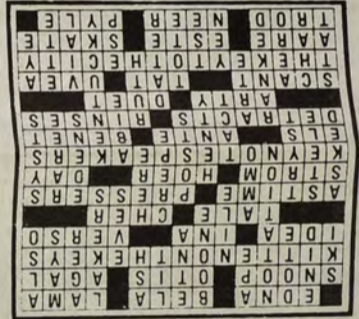
Melissa R (Comm 208) Let's get together. We seemed to have fun at Styx. T

CD We only have about a month left to survive!!

Bernie and Steve: Here is another shameless plug for your show on Sunday 7-10 on that radio station on campus.

Another shameless plug for someone's show on Tuesday 11-2.

ANSWERS



Happy 21st Birthday Vitalo! No more fake ID's! Hope you have a happy birthday, Love Keri.

The Anchor Classified Ad Form:

Classified ads cost \$1.00 per 30 words or less.

Date of issue _____ Date ad placed _____

Check one: For Sale/Rent Employment
 Personal Miscellaneous

Print Ad, 30 words or less: _____

Signature: _____ Date: _____

No full names or telephone numbers will be printed in the Personals section without the express written permission of that individual.

Name: _____

Social Security #: _____

Phone#: _____

This information is for verification and office use only.

Classified ads will be unacceptable if this form is not filled out completely.

Twenty-five free personals are given away each week to RIC students. Personals forms and depository are located at the Information Desk in the Student Union. Other classified ads may be placed, with payment, at The Anchor, Student Union room 308.

JOBS JOBS JOBS JOBS JOBS

We have the perfect job for you. Just stop by the Student Employment Office at Craig Lee 050 or call 456-8032, and we will find the job just suited for you. A few of our excellent jobs are listed below:

- Tutor for Eighth Grade Student/Prov. (Math, Soc. Stu., Eng., Span., & Sci. - \$18 per hr) #458
- Collegiate Nursing Assist. II/Prov. #459
- Collegiate Nursing Assist. I/Prov. #460
- Marketing/Sales/Warwick #461
- Mother's Helper/Pawt. #463
- Computer Teacher/Prov. - Temp. Summer Position #SI-22
- Languages Teacher/Prov. - Temp. Summer Position (French, German, Italian) #SI-23

The Anchor

Enter
today!

Presents

Only 2
weeks
left!

The 1st Annual Photo Contest

Rules:

- Participants must be RI College students. All entries must be black and white and unmounted. Each person is limited to three photo entries.
- All entries must be received by April 24th before 3pm. Bring your photos to Student Union Room 308 and fill out an entry form.
- Winners will be printed in the May 3rd issue of The Anchor.

Prizes:

1st Prize is a \$25.00 gift certificate to Adler's Photo

2nd Prize is a \$15.00 gift certificate to Adler's

3rd Prize is a \$10.00 gift certificate to Adler's

Adler's
PHOTO & VIDEO SUPPLIES
64 ORANGE ST., PROV., R. I.