

INSIDE NEWS

- Bannister Art Exhibit- page 3
- Recycling slow in pick up- page 4

INSIDE A & E

- Record Reviews- page 6
- Brown's *Landscape of the Body* page 7

INSIDE SPORTS

- Profile: Kathy LaQuale- page 11
- Soccer team loses- page 11

Established 1928

Rhode Island College

September 30, 1991

Free



The Anchor



"Free access to ideas and full freedom of expression"

Student speeches lower proposed tuition increases

Board of Governors to ask state for more money

By John Valerio
Anchor News Editor

The Board of Governors for Higher Education voted Thursday to increase tuition at Rhode Island College by 4.5% for the 1992-1993 academic year. The governors had originally proposed a 9.7% increase.

The decision to lower the tuition increase, and asking the state for more money, came after the governors had heard from students from both RIC and the University of Rhode Island.

Tuition rates at the other two state schools were also lowered from the proposed rates. URI students will be charged a 3.6% increase, rather than the 9.5% originally proposed. The Community College of Rhode Island tuition rate will raise 4.9%, compared to the 8.3% that was proposed.

Among the several RIC students who spoke at the meeting, was Tracia



Students line the walls of the meeting room, as the Board of Governors discuss the tuition increase.
Photo by John Valerio

Inglesby, Student Community Government President.

Inglesby told the governors that the students felt they were "being taken advantage of and their presence here proves that."

Inglesby said that the tuition increase

would result in "students not being able to finish their college education."

"I cannot see where a tuition increase will be beneficial during these hard economic times. How much more can you draw from us?" Inglesby said.

Tom Sylvester, a RIC student, asked

the governors, "What about the people who cannot afford it?"

Sylvester said that if the board told the state that tuition would not be raised, the students would back them. "We will be behind you, if you will go for us," Sylvester said.

John Klumbach, URI student body President, said "Decisions you (the board) make change lives of people."

"I'm sure that every one of my colleagues in the room knows someone, if not themselves, that has been a victim of the tuition increase. It seems you turn around in September and ask 'Where is so and so?'...Where is my friend... from geology class? Couldn't afford it. Dropped out." Klumbach said.

He urged the board to keep any increase minimal "People's lives depend on this."

Darcy Donovan, a member of Student Community Government, said "If we were getting more for this increase... better facilities, more parking, rooms that aren't roasting or freezing, maybe we would understand."

Soviet changes hitting home

Part two of two on how changes in the Soviet Union affect higher education

By Lynda Michael
Anchor Staff

As communism collapses in Eastern Europe, and the USSR recovers from a political upheaval, attention is becoming increasingly focused on Soviet culture. This string of current events is reshaping the study of Russian life right here at Rhode Island College.

Part one of this series suggested that there has been a lack of proper focus on real Soviet culture. In essence, the "people have been looked at as inert", and for this reason past areas of study have been focused from the top down; examining only Moscow, the Kremlin, and politics. The "new" studies should be taken from the bottom up- starting with the basic unit of a single person.

According to Dr. Darek Niklas, Assistant Professor of Sociology, this type of research and study has been around for a long time. Niklas stated that "There is a new interest in Russian life because it is just becoming fashionable".

Niklas spoke of Professor Mark Fields at Boston University, author of *Soviet Interview Project*. Fields began his research in the 1950's, largely conducting interviews of emigres from

Soviet cultures. In the past, Russian studies were based on the two main cities (Moscow and St. Petersburg) due to the fact that the government was highly centralized.

Soviet culture, in Niklas' opinion, is of the two dominant cities. In many ways, very similar to French culture, where Paris is always the central unit for study. Students who wish to conduct in depth research on peasant cultures in Russia should probably look to anthropological studies.

In the sociology department, questionnaires are provided for students who wish to pursue specific course interests. Niklas added that "If an interest existed in the recent social changes in Eastern Europe", a course could be formed.

Dr. Francis Leazes, Associate Professor of Political Science, said that "Whenever there is a big change there is always a waiting period" to study the event. New text books must be printed, and new curriculums must be created. New international relations texts have already become obsolete. Currently, American political scientists are being invited to the USSR to conduct

See SOVIET, page 2

New Jewelry Program Takes Off

By Scott Altonian
Anchor Staff

In response to R.I. losing skilled craftsmen in various areas of the jewelry business, R.I.C. is adding a new B.F.A. degree concentration into the already existing Metals/Ceramics program.

The new focus, called the Manufacturing Jewelry Design Program, is "part of the college's metropolitan and regional mission to maintain and develop the essential professional and artistic skills involved in jewelry making," says Dean Weiner, a key player in the establishment of the program.

To accommodate the MJDP, five new courses will be phased in over the next two years dealing with such skills as model making, jewelry design, and lost wax casting. One course is already in place for the Fall 1991 semester, and there are currently around 15 students involved. In addition, there will be continuing education workshops and refresher courses run in the evenings and on weekends for jewelry makers and designers in the region.

"It's very popular and the students seem to be enjoying it," says Curtis LaFollette, Professor of Art and an essential proponent of the program.

In the spring of 1990, he was approached by leaders of the Manufacturing Jewelers and



Teresa Parham, a metals major, works on a project in the Art Center.

Photo by Stephanie Ridley

Silversmiths of America and the International Precious Metals Institute. They expressed concern that R.I. was losing skilled craftsmen in the area of jewelry design. LaFollette and Dean Weiner then made a proposal to the Board of Governors and over the winter and spring of 1991 worked with President Nazarian to establish the new degree program. The MJA was only involved in the advisory captivity during

See JEWELRY, page 2

Big Brothers of Rhode Island is looking for volunteers who are interested in developing a friendship with a boy between the ages of 7 and 14. Volunteers must be willing to spend 3 to 5 hours per week with the boy for at least one year. If you would like an application or if you have any questions, please contact Lory Lawrence at Big Brothers of RI (722-6300).

INTERNATIONAL PICNIC
Sunday, October 6, 2-5 p.m.

WHERE? GARDENS AT ALUMNI HOUSE, CONTINUING ED BUILDING (Park behind Walsh Gym)

SOVIET
continued from page 1

seminars on the American political experience.

In the political science department, a comprehensive course was taught for several years on the nature of politics in communist societies. A good deal of thought and research has gone into studying how society responds to political change. Student demand will determine whether this subject area will remain stable.

Looking from a historical point of view, Dr. Lewalski, recently retired from the history department, foresees a decrease in interest. "It may be that American interest in the USSR will decline, the Cold War provided a focus of attention, this interest no longer exists", he said. Lewalski added that interest in Poland, Czechoslovakia, and other Eastern European countries could be on the upswing. He said that "Many American universities have neglected Eastern European studies, and this will

PURPOSE? HAVE FUN -- SHARE INTERNATIONAL FOODS-- RAISE FUNDS FOR RIDGWAY F. SHINN, JR., STUDY ABROAD FUND

Donations \$5.00 STUDENTS \$10 OTHERS \$15 FAMILIES

FOR WHOM? All members of the Rhode Island College community

BRING? Yourself, friends, food to share

BRING A FOLDING CHAIR, if possible!

provide a good opportunity to study those left out.

For now, students must express their interest in Eastern European studies, and wait for the winds of change to settle a bit before any definite plans for particular courses can be set.

JEWELRY

continued from page 1

the initial phases but the IPMI is currently still working with the school.

It was understood that the new courses would have to be taught with the awareness of current and projected industrial practices. With this in mind, Lafollette, an internationally known jewelry designer whose work is shown in the Art Institute of Chicago, rebuilt existing studios to provide work stations for the new students. This program is "the first one in the U.S. that incorporates modern 20th Century technology in metalsmithing," he says.

The new courses will be taught by part-time faculty members and regional specialists such as Ole Johanssen, a

Campus Connection

CONTACT PERSONS:

Professor Carolyn Fluehr-Lobban (Anthropology)

Dean James McCroskery (Arts and Sciences Office)

Professor Laurie Pamental (Economics and Management)

Professor Meradith McMunn (English)

The Samaritans, Rhode Island's suicide prevention center, is looking for volunteers who are caring, non-judgmental listeners to answer the 24 hour crisis line in the center's office at 2 Magee Street, Providence.

local metalsmith and jewelry designer.

Some RISD grads and faculty members have also expressed interest in teaching.

"There will be an immediate outcome for both students and the state," says Weiner, "because jewelry is such a big part of the R.I. economy." The MJD will be designed for mass marketable jewelry products and geared more towards industrial manufacturing in the region. It will round out an already existing metals program at RIC that is "quite good" and will hopefully produce "many new excellent Art graduates," says Wiener.

CPS Brief

University Decides To Slow Down Rush

DELAND, Fla. (CPS) -- Stetson University has decided to put the brakes on the freshman rush.

All incoming freshman have to defer rush at least a semester under a new policy. A task force made the recommendation after a former student said she was raped after a party sponsored by the Pi Kappa Alpha fraternity. The fraternity has been

A new training session for crisis line volunteers is scheduled to begin September 23, 1991. Training classes are held at the The Samaritan Center, at 2 Magee Street, Providence. There are three sessions; Monday, September 23, Monday, September 30, Monday, October 7, Monday, October 14, Thursday, October 17, Monday, October 21, and Monday, October 28 from 6:30 p.m. to 9:30 p.m. covering befriending, depression, grief and loss, confidentiality and other issues involving suicide prevention. Volunteers are asked to call the office at 272-4516 to arrange for an interview prior to training.

banished from campus.

"This is not a slap in the face for Greeks. We're just trying to give students plenty of options," says Jacqueline Kersh, director of public relations.

AIM HIGH

1992 BSN STUDENTS.

Enter the Air Force immediately after graduation — without waiting for the results of your State Boards. You can earn great benefits as an Air Force nurse officer. And if selected during your senior year, you may qualify for a five-month internship at a major Air Force medical facility. To apply, you'll need an overall 2.50 GPA. Serve your country while you serve your career.

USAF HEALTH PROFESSIONS
TOLL FREE
1-800-423-USAF

AIR FORCE



a unique boutique

Sentimental Journey

new • selective pre-owned • vintage
quality women's clothing

hats
jewelry
& more ...

sizes petite to 15+

including many designer & better labels

Rentals from the 1920's - 60's, too.
Come see!

1085 Chalkstone Avenue • Providence

Tue.-Sat. 10-5 421-6005 Consign by appt.

Career Development Center

Craig-Lee 054 (401) 456-8031

October Workshop Calendar

Resumé

Oct. 1, 3:00-4:00 p.m. Oct. 3, 9:00 a.m.- 11:00 a.m. Oct. 2, 12:00 p.m.- 1:00 p.m.
Oct. 18, 8:30-9:30 a.m. Oct. 15, 11:00 a.m.- 1:00 p.m. Oct. 31, 12:00 p.m.- 1:00 p.m.
Oct. 25, 10:00-11:00 a.m. Oct. 23, 12:00 p.m.- 2:00 p.m. Oct. 28, 1:00 p.m.- 3:00 p.m.

Coop. Ed. Info. Session

Oct. 23, 10:00 a.m.- 11:00 a.m.
Oct. 29, 9:00- 10:00 a.m.

Senior Accounting Majors!!

If you plan to graduate in 1992 and are interested in our recruiting schedule, call the office immediately!

Senior Alert!!

If you plan to graduate in 1992 (January, May or August) and did not receive notification about Senior Orientation, please contact our office (8031) immediately.

Student Alert!!

Students preparing for a Spring 1992 Cooperative Education Field Experience are advised to visit the Cooperative Education office, CL 054, prior to the Spring registration process in late October. All interested students are invited to attend general information workshops regarding program offerings and to apply.

START YOUR FIRST DAY WITH YEARS OF EXPERIENCE BEHIND YOU.



Bring your BSN to the Army and we'll assign a preceptor to help put you at ease.

Your preceptor will be an experienced Army Nurse who will smooth your transition from school to practice. With advice, counsel on Army nursing procedure, or just by being a friend.

With your preceptor's help, you'll meet your new challenges and rapidly move into a leadership role of your own.

If you're a BSN candidate... or you are an RN with a BSN... you'll find the rewards and responsibility you're looking for in Army Nursing. Contact your local Army Nurse Corps Recruiter.

617-451-4835 • 451-4836 • 451-4834
401-434-3630 • 434-3631
207-775-5366 • 775-5367

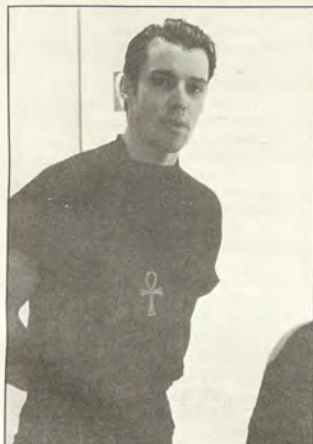
**ARMY NURSE CORPS.
BE ALL YOU CAN BE.**

Inquiring Photographer

By Stephanie Ridley
and Milo Nera

What are your reactions to the new art exhibit in Bannister Gallery?

The Worth of the Human Being Bannister Gallery Until October 18.



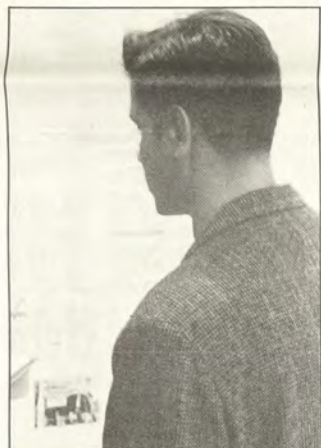
Robert Teer - "I feel uncomfortable reading it, yet I'm glad to see it's coming out. When a tragedy is not remembered, it is often repeated. As disturbing as it is, it makes you want to read."



Marc Bastien - "When learning about it, it seemed a million years away. Yet it was only 50 years ago. My parents were the same age as the kids in these pictures. It's too close to home - could it happen again?"



Christa Comeall - "It's scary. It leaves a lot of unanswered questions. For instance, what happened to the people who did these experiments?"



Carlos L. Lopez - "The importance of the exhibit is obvious because it portrays a message which has been with us for a long time. It is something we don't like to think about, yet this exhibit forces us to. I'm almost afraid to read the boards after viewing the pictures."



Theresa Hillman - "I feel uncomfortable viewing the work, yet it is important to re-experience what happened. The results are still with us today in the people who were hurt by it. We've become numb to accepting pain in the world. I feel it helps us to view this."

Bannister exhibit draws many from college community

by Scott Altonian
Anchor Staff

The Bannister Gallery opened its doors to the public Thursday with its first presentation of the fall season: *The Worth of the Human Being*, a documentary exhibition chronicling medical practices, public health, and ethics in Germany from 1918 to 1945.

Faculty members, students, and residents of the community showed up to view the somewhat disturbing but informative display of photographs, documents, and historical essays that make up the exhibit. "It's very sobering," said Dr. Carey Rickabaugh, Associate Professor of Political Science,

"to realize the extent to which professional physicians were taken in by German National Socialism out of fear of their leaders."

This is the first North American showing of the exhibition and is presented in cooperation with the Goethe-Institut of Boston and Dr. Richard Weiner, Dean of Arts and Sciences at RIC.

The Worth of the Human Being follows, in loose chronological order, the history of Germany's medical practices, from the positive achievements in public health after World War I, through the corruption during the declining years of the Weimar Republic, and finally to the gruesome

practices of Hitler's Nazi regime.

"They were trying to build the perfect race," said Art major Teresa Parham, "and the bizarre thing is that people are still trying to do it today." She found the exhibit a bit "morbid and disgusting" but said, "I learned a lot of things that I didn't know before."

The worth of an exhibit such as *The Worth of the Human Being* is easily recognizable. "Too often people say put it to rest," said Philosophy major Edward Rush, "but I think it's a necessity to constantly remind ourselves of our capability for evil."

This exhibition is a result of an official investigation by the German Medical Association into their

professions participation in the everyday crimes against humanity committed by the Nazi regime and the resulting destruction from within of medical ethics in Germany.

"It's beneficial," said Dr. Rickabaugh, "for those who've had no exposure to knowledge of the holocaust. And for those who have, it's a time to be recollective of the horrors. It reminds us to be vigilant about government and especially those who govern."

The exhibition will run until October 18th and the Gallery's hours are Monday-Thursday, 12:00-8:00 p.m., Friday, 11:00 a.m.-4:00 p.m., with special hours October 6th and 13th, 3:00-5:00 p.m.



Feast or Famine in Donovan Dining Center

By David B. Efros
Anchor staff

A resident student has three dining choices: starve, order out, or eat at Donovan Dining Center. Believe it or not, those residents who choose the third option have been well rewarded. These residents are dining on some delicious and attractively presented food!

For starters, Donovan has changed the presentation of the weekend brunches and dinners. There used to be a rather

office located inside the Faculty Center. Gallagher is also available by appointment and may be reached at 456-8207 or 456-8477.

Also, Gallagher heads the Donovan Dining Center Student Advisory Group. The group's members bring to meetings residents' suggestions and concerns regarding food and food services which are then discussed with Donovan's management team. If you are interested in participating, the group will have its first meeting Wednesday, October 16 at 12:30 pm in Student Union Room 321.

Currently in the planning stages is an expansion of the physical space of Donovan. As part of this anticipated growth, Donovan will hopefully acquire new serving areas and cooking equipment, and gain more dining space.

Of course, no dining facility exists without a friendly, courteous staff. But, the kitchen crew does not wear name tags, so, diners are hard pressed to know who to thank. However, Donovan's management team consisting of Vincent Flemming, Associate Director of College Dining Services; Arthur Patrie, Production Manager; and Walter Jasonowski, Food Service Manager are highly visible and readily available to immediately handle diner's complaints and compliments.

Attention residents: Do you have your school stuff placed cleverly in your room? The Anchor needs to know how you managed it. Send or bring your ideas to the Anchor office, Student Union Room 308 by Wednesday, October 2nd.

Dorm Life

long row of tables with all the food set up on these tables. Now, the foods have been split into different areas including a hot food, a cold food, a salad, and a dessert "station." By breaking up the serving areas, there's less congestion of students waiting to serve themselves food. Brunch is served from 11 am to 1 pm while dinner is served from 4 pm to 6 pm on Saturdays and Sundays; the meals cost \$7 for non-residents and are "all you can eat."

Next, Donovan is serving some vegetarian items at lunch and dinner three out of five days of the week. Soon, they will serve vegetarian items every day of the week. For the health conscious, Donovan offers only low calorie salad dressings. Donovan is also cooking with low cholesterol and low calorie ingredients.

Further, menu choices are being offered with today's health conscious consumer in mind. For those who need assistance making correct choices, Kathleen Gallagher, Registered Dietician, is available Tuesdays and Wednesdays from 9 am to 3 pm in her

Recycling is years behind in the pick-up

By Michael Corrente
Anchor staff

Recycling. Everyone knows about recycling. Unless you've been living like a hermit on the Himalayas, or you live in the 1950's, you know about recycling.

The current recycling movement started with the "flower power" and "save the earth" movements of about twenty years ago. Its original purpose was to assist in the problem of

dogs and chicken legs that were not any more decomposed than the day they were buried.

Landfill space is made up of about 35% paper products, 20% yard waste and about 10% each of plastics, glass, metals and food wastes, all of which could easily be recycled.

Of all the solid waste materials that are currently landfilled, the most economically wasteful is the landfilling of paper and paper products. Paper products are, of course, made from trees. It takes an enormous amount of wood to supply a nation with all its paper needs. For example, in the United States, it takes 500,000 trees to supply the nation with Sunday newspapers. Half a million trees is a small forest— a small forest cut down for the sake of newspapers once a week. The wood resources in the United States are being cut, processed to paper, then landfilled, much faster than it can replenish itself. It takes about eighty years for a tree sapling to grow to be an adult. A major paper recycling effort could do great good in slowing the demise of our nation's population of trees.

Rhode Island College has recently started a recycling program with only mediocre results. The program itself shows an initiative on the college's part to contribute to the recycling movement. However, the number of recycling vendors are very limited. For example, the paper vendor will not pick up newspaper. Secondly, the blue recycling bins, although clearly marked, are often mistaken for garbage baskets.

The facts show that recycling cannot become another "flower power" fad. Recycling is necessary to the future. Current recycling programs show that we are not efficient recyclers; we are not meeting our own needs.

Michael Corrente is a graduate student in biology. Comments, questions, and criticisms are very welcome and can be addressed to the editor.

On Environmental Grounds

over-used dumping space and therefore cut back on the amount of trash and litter that was dumped on our nation's roads.

Although today's recycling efforts still assist the problem of over-used landfill space, it has become very clear in recent years that recycling is necessary to make a less wasteful, more economic use of rapidly declining natural resources. In the spring semester of 1991, Rhode Island College started its own campus-wide recycling program.

The modern waste landfill, like the old garbage dump, has suffered from many problems of general practicality. First, garbage landfills get filled. Space for new landfills is difficult to acquire, because land to be appropriated for such use is subject to local government zoning regulations, and often subject to community concerns of environmental safety.

The scientific concept of the landfill, that garbage which is buried will, in time, decompose, has in itself also been a failure because of poor landfill management. The natural process of biodegradation requires light, moisture and air that becomes sealed out when the garbage is covered. A recent excavation of buried garbage showed forty year old newspapers, telephone books, even hot

Hall Councils' Meeting Dates

Compiled by David B. Efros
Anchor Staff

The Resident Student Association's (R.S.A.) and the Hall Council's executive boards have been elected. These organizations meet on the following dates and times:

R.S.A.: This Sunday, 10 p.m. in Browne Hall Upper Lounge.

Browne Hall Council: Sundays at 8:30 p.m.

Sweet Hall Council: Sundays at 9:00 p.m.

Thorp Hall Council: Sundays at 9:30 p.m.

Willard Hall Council: Sundays at 8:30 p.m.

Weber Hall Council: Mondays at 10:00 p.m.

Hall Happenings

Compiled by David B. Efros
Anchor Staff

Sweet Hall: "Dial-A-Tune" (residents only) 9 p.m. Tuesday, October 1. Sweet Hall dedication will be October 30.

Willard Hall: "Co-ed Flag Football Game" on Weber Beach at 12 noon, Saturday, October 5.

Browne Hall Upper Lounge: "Suitemate Game" (residents only) 8 p.m., Wednesday, October 2. "Effective Communication Skills" (public invited), 7 p.m., Tuesday, October 8.

DEPRESSED?

SUICIDAL?

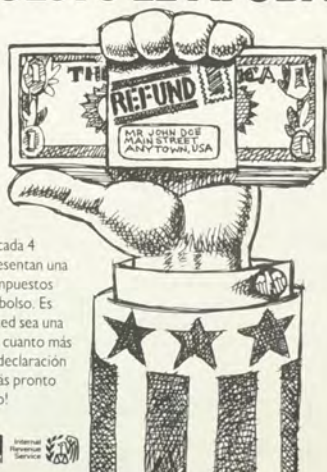
NEED TO TALK?

Call our 24-hour Confidential Hotline.

IN THE PROVIDENCE AREA **272-4044** ELSEWHERE IN RHODE ISLAND **1-800-365-4044**

The Samaritans

AL QUE MADRUGA EL IMPUESTO LE AYUDA.



Sorpresa... 3 de cada 4 personas que presentan una declaración de impuestos reciben un reembolso. Es probable que usted sea una de ellas. ¡Así que cuanto más pronto envíe su declaración de impuestos, más pronto recibirá su dinero!

Un Servicio Público de esta Publicación y del IRS

Here's What's Happening
at the



Campus
Center

Tuesday, October 1st
New Music Night
with Pete Cassani
9pm in Coffeeground

Wednesday, October 2nd
Noontime Series
with Rick Bellaire
12 -1pm in Donovan

Monday, October 7th
Celebrating Cultural Diversity
"The Card Party: Dealing
With the Deck You're Dealt"
presented by Doug Cureton
1-2pm in SU 305
(FOCUS CREDIT)

**SUPER SCOOPER
ICE CREAM SOCIAL
AND COMEDY NIGHT**
Monday • October 7 • 1991
8:00 pm • Coffeeground
Create your own ice cream masterpiece
and have a laugh with Ed DeGrande and his two
Boston Comedians at Comedy Night.

Wednesday, October 2nd
"Sprucing Up Your Friendship Skills"
presented by: Sr. Mary Ann Rossi
2pm in SU 305
(FOCUS CREDIT)

DONOVAN
DINING
CENTER

MENU

DIAL-A-MENU
x8293
FOR THE
COMPLETE
DAILY MENU

<p>Tuesday Breakfast Egg McMuffin Sausage Homefries Lunch Beef Burgandy Steamed Rice Sliced Carrots Dinner Stir Fry Pork Steam Rice</p>	<p>Wednesday Breakfast French Toast Flam Homefries Lunch Broiled Scallops O'Brien Potatoes French Green Beans Dinner Baked Scrod Chicken Nuggets Sweet & Sour BBQ</p>	<p>Thursday Breakfast Croissant Sand. Bacon Homefries Lunch Boneless Chicken Dinner Tortellini Italian Bread Broccoli Spears</p>	<p>Friday Breakfast Omelet Sausage Homefries Lunch Linguine Peas Mushrooms Dinner Beef Fajitas Taco Bar</p>
--	--	---	--

Enjoy art for art's sake: Upcoming shows at Bannister Gallery

By Michael Andrews
Anchor Staff

If you've been wondering what's going to be new at Bannister Gallery this year, listen up. Currently showing is an exhibit called *The Worth of the Human Being: Medicine, Public Health, and Ethics in Germany, 1918-1945*. The exhibit is being presented in cooperation with the Goethe Institute in Boston, a center for German cultural activities.

Bannister is the first stop for this exhibit on its North American tour before travelling to Boston University, Ann Arbor, Toronto, Chicago, Atlanta and California, respectively. The show is also being sponsored by Dr. Richard Weiner, dean of Arts and Sciences here at Rhode Island College.

The exhibit will illustrate, through a photo-journalistic-like style, the medical accomplishments and corruption of the German republic after World War I and through World War II, encompassing all those strategies conceived to eliminate a race considered "hereditarily inferior" during the latter part of the period.

The show is being presented under the co-direction of Alexandra Broches and Beth Gersh-Nesic (Dennis O'Malley, Bannister Gallery's director, is on sabbatical for the fall semester). The exhibit will run through October 18. Special hours the gallery will be open for this exhibit are: Monday-Thursday 12 noon-8pm; Friday 11am-4pm; and Sunday, October 6 and 13 from 3pm-5pm.

Also coming up this semester is an exhibition entitled "Useful Metaphors,"

which features the work of Deborah Davidson, a teacher at Vermont College in Montpelier and at the School of the MFA in Boston. Davidson uses the



This photograph, on display at Bannister Gallery, depicts the German obsession with perfection. - photo courtesy of Bannister Gallery

realm of abstraction "not as an historical outgrowth of 20th century modernism, but as a return to the prehistoric roots of signs, symbols and communication."

The opening of "Useful Metaphors" is scheduled for October 24th, and the exhibit will run through November 15th.

From November 21st through December 13th, "Recent Works," by

Peggy Cyphers will have its show in Bannister Gallery. Cyphers, who teaches at the Pratt Institute in New York City, recently was awarded a National Endowment in Painting, as well as a National Studio Award from the Institute of Contemporary Art, and P.S. 1. Her works have been included in the Library of Congress.

In 1992, from February 6-28, the work of three photographers, Ron Barboza, Max Belcher, and Stan Staniski will be featured in an exhibit called "Africa Viewed." This show will be accompanied by lectures from the photographers themselves, with each photographer lecturing on a separate day. Check the gallery for dates and times.

"Games and Players" will spotlight the work of Enrico Pinardi, and "deals primarily with the characters and activities that have historically controlled the game of life." The exhibit will include sketches, models, and drawings by Pinardi, who is a professor in the Rhode Island College Department of Art.

"Games and Players" will show from March 5th through the 27th.

Wrapping up the year's showings will be a "juried survey" of work submitted to the Regional Student Drawing Show, appearing at Bannister Gallery from April 2nd through the 24th. Entry detailed to be announced. Also, the Graduate and Senior Shows, which will run from May 1-8 and 14-23, respectively.

So, never fear -- there's something at Bannister Gallery this year for almost everyone. And don't forget, the gallery's regular hours: Monday-Friday - 11am-4pm and Tuesday and Thursday 6pm-9pm, which are being suspended only for "The Worth of the Human Being."

Record Reviews

By Jeff Damiano
Jenn Phillips
Paul Doyle

Urban Dance Squad Life & Perspectives of a Genuine Crossover

The new demo from **Urban Dance Squad** is an excellent example of the diversity of musical styles that many of today's bands are expressing to gain larger audiences. The songs on *Life & Perspectives of a Genuine Crossover* cover ground including: hard funk, heavy metal, reggae, rock, pop, rap, and several which can't be classified.

The opening track is a tune called "Comeback." During the guitar solo, they use the riff from Steppenwolf's "Born to be Wild," a song that has been covered more times than my high school English book. When any band plays "Born to be Wild," they are held in contempt, because this is usually the second song every garage band learns - right after "Smoke on the Water." Urban Dance Squad's version breathes new life into this old dinosaur of a song which hasn't been seen since The Cult's *Electric*.

The 2nd track, "The Gates of the Big Fruit," is a real "bassy" number which draws you in; it must sound great on CD. "Mr Ez Way" starts like a heavy metal Monkees song with hard driving riffs and lots of feedback.

"Grand Black Citizen" is a funk-a-metal/blues tune which is probably one of the best on the album. The bass line isn't overpowering, which is a welcome relief for those of us with cheap car stereos driving behind red Irocs from North Providence. "Duck Saa" is another song which will sound great on CD, with its cool reggae beat and lots of production thrown in. This one is messed up! "Wino the Medicine Man" is a heavy tune with a horn section.

See REVIEWS, page 7

Winner of the Rhode Island College 1991 Best Tasting Pizza Contest



1957 Smith Street
North Providence

Welcome back Special:
Dollar off any
Large Pizza
231-8740
Call for free delivery!
Hours

Sunday.....4pm-10pm
Monday.....Closed
Tues-Thurs.....11am-10pm
Fri & Sat.....11am-11pm



RIC TV Dorm. Programming Schedule September 30th—October 4th

	5:00-5:30	5:30-6:00	6:00-6:30	6:30-7:00	7:00-11:00
Monday			RIC TV the show (Student Work)	Visual Sounds (Music Videos)	Movies
Tuesday				New Music Night in the colledgeground (Live local bands)	Movies
Wednesday			RIC TV the show (Student Work)	Visual Sounds (Music Videos)	Movies
Thursday				R.I.C. Rock Hunt 91 (Live local bands)	Movies
Friday			RIC TV the show (Student Work)	Visual Sounds (Music Videos)	Movies

Thorpe
Weber
Willard

Order your suite
connectors now

For More Info.
Call:

**456-
8543**

Brown
Sweet

Catch RIC TV
in the lounge

Commuters, watch channel 49
on Wednesdays at 7:30 to see RIC TV

RIC TV is located in the Student Union, Room 206



REVIEWS, from page 6

Overall, Urban Dance Squad can offer something for everyone. If you want to try something different, this is it. This album will be really big for them, and you should look out for Urban Dance Squad in the future! It's too bad they didn't include a lyric sheet or info on the band, but when the tunes are ready for release, you're sure to hear a lot from it. Trust me. (J.D.)

David Mullen
Faded Blues
Warner Bros.

These days, it is typical to streak into a record store and join a purchasing frenzy of shoppers buying a tape or compact disc by the latest supergroup, drowned in publicity and hype...only to become obscure -- except, of course, for perennial favorites like Aerosmith or REM. Oftentimes, these tapes are full of glitz and glamour, but are lacking in quality deep down inside. Gems like REM's *Out of Time* and U2's *The Joshua Tree* are rare, and continue to dwindle with each passing year. Whatever happened to the good old days when groups like the Beatles, the Who and Led Zeppelin combined mass appeal, great talent and continuity?

Unfortunately, many excellent tapes are often overlooked. Their artists are frequently way more talented than Top 40 acts, but are, due to lack of publicity, nearly anonymous. A case in point is Christian rocker David Mullen's latest release, *Faded Blues*. His group's sound is largely mainstream, but is infinitely better than some of the junk heard so often on WXIN and WPRO-FM. His lyrics are not trite mumbblings about the same kind of love sixty other songwriters have already written about, but are

and soft at the same time and a little airy. Hearing them on a radio station such as WBRU, "the cutting edge" station, would not surprise me.



Straitjacket Fits are (l. to r.): Andrew Brough, David Wood, Shayne Carter, John Collie.

Where did they go wrong with the words? I could not understand half of what they were singing. It wasn't their New Zealand accent; the words I could make out didn't have a hint of an accent. It wasn't because the music overpowered the lyrics; in "Quiet Come" the music faded out in parts and I still had difficulty. Does Shayne Carter slur his words? Maybe. Does he not speak directly into the mic? This could be it, too. Do I care too much about the words? Maybe this is true also. (J.P.)

Brown has flashbacks from Landscape of the Body

By Alan Gunther
Anchor Staff

Brown University Theatre began its fall season with John Guare's *Landscape of the Body*. The program describes the play, saying, "This play portrays the harsh realities and colorful characters of contemporary New York City with pathos, horror, music and humor blended into an emotionally devastating climax." True, but it wasn't that powerful.

The play moves through a series of flashbacks and flashbacks within flashbacks. Oddly enough, it never gets too confusing. The play opens on a ferry heading to Hyannis port. Here, Captain Marvin Holaman approaches Betty (our makeshift heroine) one last time about her son's death. You see, he was decapitated. Yeah, that portrays "the harsh realities of contemporary New York City!"

The scene switches to a flashback in a Greenwich Village police station, where Holaman grilled Betty about the death. He wanted her to admit she killed him. Now, hang on, we flashback again.

We find Betty and her teenage son Bert (who still has a head at this time) arriving in Greenwich Village to talk to Betty's sister, Rosalie, into returning to Maine with them. "Hogwash" says Rosalie. (Actually her term was much harsher, but we can't print it.) Life's



Aurorae Khoo

too good for her in New York. You see, she's a porn queen and also works at Honeymoon Holiday travel agency. Some travel agency. They just talk newlyweds into spending lots of cash. It's low, but a good laugh. Then, guess what? Rosalie dies.

However, the offbeat way in which this play is performed is where the fun

See THEATRE, page 10

The Known and The Unknown

Straight outta Whoville

"You're a mean one, Mr. Grinch."
Dr. Seuss

After Wile E. Coyote gets blown to bits by his own Acme gadgets for the 67th time, you think he'd quit chasing the roadrunner and just order a pizza. He hasn't done that yet, but on the other side of the t.v. screen, Sean, Josh, and Derrick from Grinch are chowing pizza and letting the truth be told about *Listen, Buddy* and other cosmically important stuff...

Derrick- the new tape, *Listen, Buddy*, has got eight originals and one cover, "We got the beat." See, I met Belinda Carlisle on the beach...

Josh - She was drawing circles in the sand and I walked up and she said...

Sean- She said, "You're the guys who have to cover our biggest hit ever".

Derrick- She said she saw it in a vision.

Oh. Have you guys been shopping

around for a label to sign with?

Derrick- Yeah, we're sending tapes to Giant and Restless, labels that already have bands that play music like we do.

What kind of music is that?



Derrick- Um, hard edged melodic pop pap core.

So, who have been your influences?

Josh- Robert Smith and Jane's Addiction

Sean- Slash and Ace Frehley

Derek- Berklee bands, Bad Religion, Green Day, Rollins, Vanilla Ice...but he ripped us off. We had a song called 'Grinch, Grinch, Baby'. He stole it.

When will the tape be out?

Josh- Now.

What's your favorite street sign?

Josh- I'd have to say 'Deaf Child'.

Derrick- 'No parking on the second Tuesday of every month between 9:00 and 9:15.

Sean- 'Pedzinger'.

Listen, buddy is available at Tom's, Goldy's, Fast Forward, and In Your Ear, all on Thayer Street. Crank it up then come join their ever growing throng of fans when they play out.

This week in clubland...catch *New Music Night* in the *Coffee Ground*, Tuesday night at 9:00. Show up and get wired on Café au lait. Wednesday brings local headbangers *Triton* to the *Campus Club*. After that, it's a Babyhead weekend, - *3rd Bass*, *Meat Puppets* and *Mighty Lemon Drops* on Thursday, Friday and Saturday. That's right, *3rd Bass* at the Head. I can't believe it either.

Dr. Seuss R.I.P.



Christian rocker David Mullen

honest and revealing, talking about life in a very relatable and open-minded way. They are not so directly religious, but are quite inspiring. The meaningful lyrics and great music of *Faded Blues* constitute a very good album that may be hard to find, but is well worth your money. (P. D.)

Straightjackets Fits

Melt
Arista

With a name like *Straightjacket Fits* and the title *Melt*, I thought I would just have to love it -- WRONG! Well at least half wrong.

I did like the sound. This New Zealand band produces a sound both hard

Do You Want VISA & MasterCard Credit Cards?

REGARDLESS OF CREDIT EXPERIENCE

IAL SERVICES, INC.

VISA 10th Year!

IAL SERVICES, INC.

MasterCard

Now you can have two of the most recognized and accepted credit cards in the world...VISA® and MasterCard® credit cards...in your name! EVEN IF YOU ARE NEW IN CREDIT or HAVE BEEN TURNED DOWN BEFORE!

VISA® and MasterCard® the credit cards you deserve and need for— ID—BOOKS—DEPARTMENT STORES—TUITION—ENTERTAINMENT—EMERGENCY CASH—TICKETS—RESTAURANTS—HOTELS—MOTELS—GAS—CAR RENTALS—REPAIRS—AND TO BUILD YOUR CREDIT RATING!

GUARANTEED! VISA/MASTERCARD GUARANTEED ISSUE OR MONEY BACK

Approval absolutely guaranteed so

MAIL THIS NO RISK COUPON TODAY

STUDENT SERVICES, PO BOX 2596, HOLLYWOOD, FL 33022

YES! I want VISA®/MASTERCARD® Credit Cards. Enclosed find \$15 which is 100% refundable if not approved immediately.

NAME _____

ADDRESS _____

CITY _____ STATE _____ ZIP _____

PHONE _____ S.S.# _____

SIGNATURE _____

NOTE: MasterCard is a registered trademark of MasterCard International, Inc. VISA is a registered trademark of VISA U.S.A., Inc. and VISA International Services Association.

100% GUARANTEED!

What's Happening

For the week of September 30 thru October 6

By Patricia Pratt
Anchor Editor

Monday

Hi and welcome to the last Monday of September! I wish it was the last Monday in existence, but it's not. Anyway ...

Mondays don't have to be so serious. You may want to get your butt down to **Comedy Café** in the Coffeeground. The laughs begin at 9 p.m.

If that doesn't strike your funny bone, you could hop over to the **Last Call Saloon**. Entertainment for tonight includes **Stowaways** and **Black & White**. Tickets are available for the show at **In Your Ear Records** or the **Last Call**. If you're lost, the **Last Call** is located at 15 Elbow Street in Providence behind the Spidel building.

Tuesday

Welcome to October - the time for pumpkins, that Halloween smell in the air and trick-or-treaters banging on your door. Well, that's a whole 30 days away, but it'll be here before you know it.

What else will be here before you know it is tonight's bout between **Vinny-the-you-know-what-Pazienza** and **Gilbert Dele**. It's a **WBA Jr. middleweight** fight. Preliminary action starts around 8 p.m. Tickets are \$10, \$25 and \$40. For VIP and ring-side seat info., call **Father & Son's Gym** at 331-7224.

Wednesday

What cha' might want to do today is take in some art. The scribbles you create in your notebook while your

professor gabs do not qualify. Sorry. But, something at **Bannister Gallery** does. Now through the 18th, they're showcasing **Der Wert des Menschen**, or "The Worth of the Human Being." This display focuses on the medicine, public health and ethics in Germany from 1918 to 1945. The gallery is open today from noon to 8 p.m.

I bet it's been a while since you went to the theatre. I don't mean the place that shows flicks, I mean live theatre. **The Unnamed**, an adaptation of H.P. Lovecraft's story **Haunter of the Dark**, opens tonight at **New Gate Theatre**, 134 Mathewson Street in Providence. It's a story which "weaves together the mysterious lives of both the haunted protagonist of the story and Providence's enigmatic author - who said of himself, 'I am Providence.'" He must be awfully big and under construction, I must say. Call 421-9680 for information. Remind them you're a student, you may get a discount! (They may charge you extra, too! Who knows!)

Thursday

If your kitchen has wallpaper with huge yellow daisies on them, guess what? You're totally out of style and way behind the times. By my estimates, you're somewhere stuck in the 60s. Catch up on the times and go the the Providence Civic Center as the **Ocean State Home & Interior Design Show** kicks off tonight. Numerous products and services for the home, workshops, and seminars will be held

on subjects devoted to house dressing (not Catalina, French or Creamy Italian, mind you), distinctive rooms and renovation. Tickets are \$5. It's open today and tomorrow from 4 p.m. to 10 p.m., Saturday from 10 a.m. to 10 p.m. and Sunday from 11 a.m. to 8 p.m.

AAAH! Call 911! Paris is Burning. Oh, it's a false alarm, sort of. It's not a headline - it's a film, showing tonight at the **Avon**. Showtime is 7:30 and 9:30 p.m. A film which explores the gay voguing scene in New York, it depicts the black and latino drag queens who glitter to a musical score. It's directed by **Jennie Livingston** and not rated, but "for adults only." Call 421-3315 for additional film titles and showtimes.

Friday

Ok, if you see me today and I'm a little depressed, it's because my boyfriend is leaving for boot camp today. The only thing that's going to make me feel better is - **BETTER HIM THAN ME!** (Good luck, Matt.)

While I wallow in my sadness, you may want to catch the season opener of the Providence Performance Arts Center. It's **Gypsy** - the tale of Gypsy Rose Lee's rise to Broadway fame. The classic tunes which come from this musical "Let Me Entertain You" and "Everything's Coming Up Roses," are sure to put you back in the era of vaudeville. The show runs through Sunday. Tickets are \$19.50 to 33.50. Call 421-ARTS for info. Don't forget to mention you're student, they may give you a break (where, I don't know).

Saturday

There's lots to do today!
"...peanuts and Cracker Jacks..." and hotdogs and indigestion may follow you to today's **Boston Red Sox** game. For \$10, you can get transportation and tickets. Sponsored by **RIC Programming**, you may call x8045 for additional info.

Next on the agenda is the **Ocean State Leadership Consortium Conference** being held at Bryant College today. \$5 fee includes registration, travel and meals. It's sponsored by the Campus Center. Call x8034 for details.

A trip to **Ellis Island** is also scheduled for today. Sponsored by the Chaplain's Office, a bus leaves **RIC** at 7 a.m. and then leaves New York at 7 p.m. Tickets are \$25. I went to **Ellis Island** this summer and it was great - I highly recommend it. You get to see the **Statue of Liberty**, too. Besides, you get a great view of the city's skyline! Call x8168 for info.

Sunday

Sunday's the day to catch up on your homework - the stuff you said Friday you were going to finish Saturday. You didn't, did you?

To help with your procrastination, may I suggest **Rhode Island Watercolor Society's** display of watercolors and oils. You can catch them at **Slater Memorial Park, Armistice Boulevard** in Pawtucket. Gallery hours today are 1 to 5 p.m. If it's a nice day, take a stroll in the park and feed the ducks for me.

STIX

Billiard & Dance Club

1195 Douglas Avenue, North Providence
Telephone: 353-0880
5 minutes from Rhode Island College

Welcome Back R.I.C.! Here's what's happening at STIX . . .

Nickel Nite



Wednesdays from
8 pm to 12 midnight
Come down and see what
a nickel will buy!

Friday:

Thank God It's Friday Party
Free buffet at 6 pm and live music
with **Don Levine** from 7 to 11 pm!

Saturday: Live music in the Tavern Room

Sunday: Open at 12 noon - free hot dogs
during NFL games & 1/2 price pool 'till 7!

Thursday:

STIX "Yard Sale"

Can you drink a yard of your
favorite brew? We've got full
and half yard glasses
College Pool Tournament
Win prizes!

Every Thursday, Friday and
Saturday in the Keg Room:

Free STIX cup filled with
17 oz. dollar specials all
night long! You won't
believe what you get!
AND - no cover 'till 10!



Monday - Friday
from 4 to 7 pm
We're Pitching
our pool!
1/2 hour
of pool
PLUS

a pitcher for
just 5 bucks
Whatta deal!

Live Bands every
Tuesday in the Keg
Room! This week:
"One Last Wish"

Hours of Operation: Monday - Thursday, 4 pm to 1 am. Friday, 4 pm to 2 am. Saturday, 12 noon to 2 am. Sunday, 12 noon to 1 am

RIC's Performing Arts Series Kicking Off A New Season

By Astra Freinauis
Anchor Staff



The Anchor Arts and Entertainment section welcomes you to a new school year, and a new and lively season of Performing Arts at the college. Get some culture, round out your education, and do some *creative* relaxing with a potpourri of Performing Arts that varies from dance to theater, string quartets to acrobats; there's something for all of your entertainment tastes.

Opening this year's season is the Turtle Island String Quartet. Don't be fooled by the name though; this is no ordinary string quartet. They range in style from Miles Davis to Eric Clapton. Tempting, is it not?

The San Francisco Mime Troupe will present an African-American rewrite of Uncle Tom's Cabin, called "I Ain't Yo' Uncle," and as if that hadn't already caught your attention, how about the Peking Acrobats, directly from the People's Republic of China? Gymnastics, hair raising stunts, thrills, excitement....

From there, you can calm down and

Programming presents: Horrorween 1991

Rhode Island College Programming presents the 14th Annual Horrorween. Saturday, October 26th, from 9:00 p.m. - 1:00 a.m., at the Rhode Island College Student Union. Tickets are \$4 with a RIC ID and \$6 without. Tickets may be purchased at the Student Union Information Desk, or at the door that night.

chill out with Mowix, dance illusionists - beauty, creativity, fantasy. Or how about a little sampling of Cho-Liang Lin, a world renowned classical violinist.

Interested yet? Hold on ... there's more!

Chanticleer, a vocal ensemble, will present a marvelous Christmas gift - a performance of Christmas music in their own enchanting style, the twelve man "Orchestra of Voices."

There are many more exciting events happening here this year. For more information, call the Performing Arts Series at 456-8194. See you at the show!

Traditionally the best bet for a "Horrorifying" good time, this year's Horrorween will feature two local bands, a costume contest, a fortune teller, a pumpkin carving contest, and a video dance party.

If you have any questions concerning Horrorween, please call the Programming office at 456-8045.

**WIN
88.1 FM**

HIT LIST

For The Week Of Sept. 30, 1991

Request Line
456-8787

Rhode Island College - 600 Mount Pleasant Avenue
Providence, Rhode Island 02908 - (401) 456-8288

LAST WEEK	THIS WEEK	TITLE	ARTIST
1	1	I Adore Mi Amore	Color Me Badd
7	2	Love Of A Lifetime	Firehouse
4	3	Hole Hearted	Extreme
9	4	Emotions	Mariah Carey
5	5	Good Vibrations	Marky Mark & The Funky Bunch
3	6	Now That We've Found Love	Heavy D & The Boyz
10	7	Enter Sandman	Metallica
11	8	Romantic	Karyn White
2	9	Crazy	Seal
14	10	Do Anything	Natural Selection
6	11	The Promise Of A New Day	Paula Abdul
19	12	Shiny Happy People	R.E.M.
8	13	Things That Make You Go Hmm.	C&C Music Fac.
20	14	O.P.P.	Naughty By Nature
13	15	Motownphilly	Boyz II Men
12	16	The Motown Song	Rod Stewart
26	17	Can't Stop This Thing We Started	Bryan Adams
22	18	Running Back To You	Vanessa Williams
23	19	Something To Talk About	Bonnie Raitt
18	20	You Can't Play Me	4 Fun
24	21	Walk Through Fire	Bad Company
16	22	Too Many Walls	Cathy Dennis
28	23	Real Real Real	Jesus Jones
15	24	Wind Of Change	Scorpions
---	25	Don't Cry	Guns N' Roses

The Anchor

Writers & Reporters

Photographers

We need you

Show us what you can do

Public Relations

Many positions available

Work/Study
Typesetters

Apply today! Call 456-8280 or
stop by Room 308 of the S.U.

Advertising Sales

Graphic Artists



Singers need not apply

New England Patriots



Vs.

Miami Dolphins

Sunday, October 6, 1991

Bus leaves Student Union
loop at 11 a.m.

Game begins at 1 p.m.

Tickets:

\$25 Students

\$30 Faculty/ Staff

Bus included in
ticket price

Tickets available at
Student Union Info Desk

Sponsored by the Class of 1992

THEATRE, from page 7

lies. The ghost of Rosalie often acts as narrator and commentator. She is dressed as a Las Vegas-style lounge singer, and often sings songs that relate to the events in the play, a truly creative idea from playwright Guare. Aurorae Khoo is terrific as Rosalie. She makes her character sassy, sultry and sarcastic.

The fact that the Leeds theatre is a theatre in the round, added extra spice to the play. The action is all around, making the viewer feel involved. The set for the ferry and the piano lounge were set off along a back wall, but angled so all could see. Props were minimal. Only the bare essentials like

tables, chairs, and even a working sink was used.

The cast was great. Simon Sullivan was terrific as Bert. He made the perfect snotty-nosed teenager. Larissa Paige Kokernot made Betty believable and human. Chaka Forman nearly stole the show as the bizarre Cuban mobster, Raulito. David Taylor gave Donny a rather David Lee Roth look, while Justin Gross struggled to get his accent right for Captain Holaman.

Summing up, Brown University Theatre went all out to put on a good play. The play's storyline was the only thing I had some problems with. The rest of the audience seemed quite pleased, however. So who killed Bert? Well it wasn't Colonel Mustard, but it did involve a wrench!

Act Like You Know

M.C. Lyte

First Priority Music

By Tony Ramos

Anchor Editor

Oh Yes people! The Lyte one has released another pumping album titled *Act Like You Know*. I must say it's a good one. M.C. Lyte, as we all know, is no rookie when it comes to the rap music world.

Born in Queens and raised in Brooklyn, M.C. Lyte was destined to become the first female rapper to leave an indelible mark on hip-hop music.

With the 1988 release of her first single "I Cram To Understand U (Sam)," she began an unbroken string of rap hits that ran through her first two albums. That string is sure to continue with the release of her third and most powerful work to date, *Act Like You Know*.

Lyte was encouraged to begin recording by her brothers, *Milk and*

Gizmo of Audio Two, who have worked with Lyte throughout her career.

M.C. Lyte's album *Act Like You Know* has a variety of different producers including M.C. Lyte, herself. Such tracks like "When In Love," which has a very heavy bass line and "Eyes Are The Funk" with an upbeat jazzy funk sound. Other cuts on this new album, such as "All That," "Kamikaze," and "Like A Virgin" are produced by Audio Two.

M.C. Lyte's messages on her album *Act Like You Know* range from songs with sexuality to simple things in life. All though *Act Like You Know* has a label with a Parental Advisory Explicit Lyrics sticker, but let me tell you this album jams! If you want to hear it for yourself, then tune into your local radio station and request a cut off the album *Act Like You Know* by M.C. Lyte. If that doesn't work, try The Heartless Jim Braboy Show, he'll play it. This is the Tee Man with this week's Rap Music Report. (T.R.)

Who's Who Among Students in American Universities and Colleges

Now accepting applications for both
graduate and undergraduate students

Criteria

Undergraduates: minimum cumulative index of a 2.5 and
60 earned credits completed as of September 15, 1991.

Graduates: minimum cumulative index of
3.25 and 15 earned credits completed.

Participation and leadership in academics and
extra-curricular activities and
service to Rhode Island College

Nominate now...

**Students can nominate students,
faculty can nominate students.**

Deadline for nominations is Friday, October 11.

Send all nominations to Mr. Dixon McCool, Craig Lee 127

By Rosie Comforti
Sports Editor

Sports Profile: Kathy LaQuale

After having been on sabbatical for a year, Rhode Island College's athletic trainer, Kathy LaQuale says "it's great to be back."

Kathy has spent the last year working at the University of Rhode Island on her doctorate degree in nutrition to help create special diets that student athletes ask her about. She wishes to have "a better understanding and to have on-hands experience," in order to answer specific questions about diets and

and taking care of student/athlete injuries.

In addition to being athletic trainer, Kathy is also the advisor for twelve student trainers of the Sports Medicine Club. Kathy says that her job would not be possible without their assistance, "They are indispensable, and they make me successful."

It seems as if the job of athletic trainer was made for Kathy simply because she "loves physical education and always wanted to be a teacher." She

them for their entire season. The purpose of this research will be to show how "the weight cycle affects their strengths, moods, and the percent of body fat." Her ultimate goal is to show how losing and gaining weight affects the wrestlers, both as a team and as individuals.

As for being back after her sabbatical, Kathy says that "I feel like I never left." She tries to run a friendly office. She says the biggest thing is to "treat each athlete as a human being and give him/her the respect they deserve." As trainer, Kathy thinks of herself as "the liaison between the athlete and coach." The students feel comfortable around Kathy, knowing that she can be trusted because "many things are said in confidence." Kathy's office is located on the bottom floor of Walsh Gymnasium, and she says "the door is always open."

Kathy is currently writing a chapter in a textbook about athletic training. Her chapter is to be entitled "The Female Athlete." The book should be published within the next year. Also, Kathy is writing her own book on stretching, which she hopes to finish after her doctorate is completed.

Kathy best sums up her job as athletic trainer as "having the best of both worlds. I am a teacher, athletic trainer, and writer. I am very fortunate."

Sports Trivia Quiz

1. What horse won the Preakness Stakes in 1985?

- A. Spend A Buck
- B. Tank's Prospect
- C. Danzig Connection
- D. Creme Fraiche

2. Who did Hale Irwin beat on the 1st hole of sudden death to win the 1990 U.S. Golf Open?

- A. Curtis Strange
- B. Nick Faldo
- C. Greg Norman
- D. Mike Donald

3. What U.S. female swimmer won gold medals in both the 400 and the 800 meter freestyle races in the 1988 Summer Olympics?

4. Who was the last defensive end to be named a Super Bowl M.V.P.?

- A. N.Y. Islanders
- B. Edmonton Oilers
- C. Calgary Flames
- D. Montreal Canadians

5. What hockey team won the Stanley Cup from 1980-1983?

- A. N.Y. Islanders
- B. Chicago's Richard Dent, Super Bowl
- C. Janet Evans
- D. 2. D. Mike Donald

1. B. Tank's Prospect

Answers:



Kathy LaQuale as she tapes the wrist of a gymnast - Photo by Stephanie Ridley

athletics. Kathy is also working to be a registered dietitian and to have a bachelor of science degree in nutrition.

At her job as athletic trainer, Kathy "wears many hats." She says she is like a therapist, a physical education teacher, a nurse, and a technician all rolled into one. She has various tasks such as designing rehabilitation schedules, administering physical tests and exams,

graduated as a physical education major from URI in 1973. She got her start as an assistant trainer at Indiana State University, then went to Providence College for eight years. Kathy came to RIC in 1984 and found the full-time position as athletic trainer available.

This fall, Gatorade is sponsoring Kathy in a special research project concerning the wrestling team. Starting in October, Kathy will be monitoring

Soccer Team loses to Westfield State

By Eric Bama
Anchor staff

Rhode Island College's soccer team lost Sunday September 22 to Westfield State College 2-1. RIC scored in the first half with a goal from junior mid-fielder Jose Martins; he was assisted by junior forward Joseph Luzzi and Fred McNulty. Westfield tied the game 1-1

in the second half with a goal from Lima with an assist from Anderson. Westfield scored the winning goal into the second half. RIC is now 2-3-1. Westfield, which was previously winless, is now 1-4-0. The Anchormen continued their four game road trip at Roger Williams College on Sunday September 29.

Upcoming Sports Events

Women's Volleyball:

Saturday October 5th, Rhode Island College Invitational 9:00 am
Friday October 11th, at Eastern Connecticut State University
Tournament 6:00 pm

Women's Tennis:

Tuesday October 1st, University of Massachusetts-Dartmouth 3:30 pm
Tuesday October 8th, Roger Williams College 3:30 pm
Thursday October 10th, at Bryant College 3:00 pm

Women's and Men's Cross Country:

Saturday October 5th, Tri-State Championship at Bryant College 11:00 am

Soccer:

Saturday October 5th, U.S. Massachusetts Maritime Academy 1:00 pm
Tuesday October 8th, Wentworth College 3:30 pm
Thursday October 10th, at Bridgewater State College 3:30 pm

S
A
L
E

The
CAMPUS
Store

Selected Sweatshirt Sale
30% off

GEAR
FOR SPORTS™

Cotton Crew
Frosted Heather Grey
RIC Sweatshirt

Reg. \$27.95

NOW - \$19.95

NEW STORE HOURS -

Monday - Thursday 8:45 - 7:00
Friday 8:45 - 4:15



Check out our
PRO SHOP with it's
complete line of
"Back to School"

Sportswear by:
WORLD GYM PLUS International,
Body Alive, Craze Wear, No Limits & More!

PLUS in Seekonk

SPECIAL STUDENT
DISCOUNT
ONLY \$99
FOR THE SEMESTER
* from now till the end of '91 *

WORLD GYM PLUS
350 Fall River Ave. • Seekonk, MA
Call: 336-PLUS

Located just off Rte. 195
at the Junctions of Rtes. 114A & 44
in Seekonk, next to "Carpano's Press Box Pub"

- Featuring:
- 25,000 lbs. of FREE Weights
 - Equipment by: Cybex, Body Masters, Nautilus, Muscle Dynamics, Trotter, Stairmaster, Lifecycle & More...
 - Racquetball
 - Basketball
 - Karate
 - 2400 sq. foot Aerobic Studio with "Step Reebok"
 - Steam/Sauna
 - Physical Therapist
 - Pro Shop
 - Juice Bar
 - Personalized Training

Bring in this ad for
10% OFF
any purchase in our
PRO SHOP



Fulfill all your communications requirements with one course.

AT&T STUDENT SAVER PLUS

If you're looking for a simple way to handle all of your communications needs, there's one prerequisite. Join *AT&T Student Saver*

Plus You'll be able to get a line of products and services designed specifically to save college students time and money. Our *Reach Out® America Calling*

Plans† could save you money, no matter where

25%^{off}

and when you call. And the *AT&T Calling Card** makes it easy to call from almost

anywhere to anywhere.



And with AT&T, you'll always get the most reliable long distance service. Plus, if you register for any of our

services—or if you're already an AT&T customer—you'll get

**1 HOUR
FREE**

a free hour's worth of AT&T long distance calling** As well as discounts on all kinds of

things all year round. So ask about *AT&T Student Saver Plus*. You'll find that for this communications course, we did our homework.

Join *AT&T Student Saver Plus* today. Call 1 800 654-0471 Ext. 4810.



†This service is available for off-campus students only.

**May not be usable at all on-campus phones.

**Good for one hour of direct-dialed, coast-to-coast, night and weekend calling, based on prices effective 2/16/91. Offer limited to one

\$8.25 AT&T Long Distance Certificate per student. Offer valid through June 30, 1992.

© 1991 AT&T

Lest We Forget...

Atrocities ... monstrous practices ... "a combination of violent nationalism and visionary biology." These are the words we use to describe the Germany depicted in *The Worth of the Human Being*, on display now in Bannister Gallery.

On the other hand, "revitalized," "rejuvenated," and "unified" are the words are the words used in reference to present-day Germany. Fifty years have passed since the rise and fall of Hitler's Third Reich. The world knows the inanity and fruitlessness of attempting to punish Germany now for the war crimes of a dead generation.

If this is the case, then, and the purpose of the exhibit is not to condemn Germany (again) for the heinous persecution of the Jewish people, what is to be learned from it?

In our politically correct brave new world, we are prone to forget the past, or to at least push the unpleasantness to the back of our mind. The horrors of history demonstrate the age old truth that evil flourishes when good men watch and remain silent. The pictures and accompanying essays, of men, women and babies tortured and killed, by doctors in the name of science, should remind each and everyone of us that the time to speak is now. We must fight for our rights now, before one man, or one political group, becomes too powerful to control.

What Hitler took from the German people fifty years ago, our generation is giving away. Every time we choose not to vote, choose not to read the newspaper, choose not to pay close attention to the actions of our elected officials, we lose a little more of our freedom. Each time we choose not to question authority, we come one step closer to losing that "right" to choose.

After laws are passed, tuition increases imposed, wars declared, condominiums bought, it is damned near impossible to undo them. The time to question is before power has corrupted. The lesson to be learned from *The Worth of the Human Being* is this: Question authority. Open your eyes, prick up your ears, and say, "Never again."



PAX AMERICANA

Submissions Policy

Letters to the editor must be received one week in advance of the intended publication date. Limit length to 250 words. The Anchor will attempt to print every letter received.

Anything deemed inappropriate by editorial decision will not be printed. The Anchor reserves the right to edit all letters, commentaries and 'Anchor Lines'

comments for space and libel. Submissions in this section of the paper, with the exception of the editorial, are printed on a contributor basis and do not necessarily represent the opinions of the paper.

All letters, with the exception of the Anchor Line' must be signed and include a phone number for verification.

The Anchor Editorial Board

Executive: Tony Ramos and Jennifer Hazard News: John Valerio
 Production: John Valerio & Jeff Wallace Graphics: David Lineberger
 Copy: Jennifer Hazard Arts & Entertainment: Maggie Gordon
 Sports: Rosie Comforti Advertising: John Theroux
 Managing: Tricia Clift Business: Patricia Pratt
 Photography: Stephanie Ridley Public Relations: Jeff Damiano

Staff Writers:

Michael Andrews, Eric Barna, Brian Cabral, Belinha D'Abreu, Paul Doyle, David B. Efros, Chris Fagan, Alan Gunther, Eileen James, Kristen Keach, Travis Lawton, Lynda Michael, Susan Perrott, Diana Pena, Jenn Phillips, Susan Russo, Tim Sullivan

Staff Photographers:

Jeff Damiano, David B. Efros, Dino Soscia

Professional Advisor:

Tom Heslin

Member



College Press Service

Graphics Staff:

Alan Gunther

Faculty Advisor:

Dr. Moyne Cubbage

Printer:



TCI Press, Seekonk

The Anchor is located in the Student Union, room 308 456-8280



We've Got You Covered!

If you have comments about RIC that you think deserve to be heard... just pick up the phone and call. Your message will be recorded and printed in the next issue of The Anchor. It's completely anonymous... no need to leave your name

The Anchor Line
456-8257



**DRINKING AND DRIVING
CAN KILL A FRIENDSHIP**



A Message From The Editor: I think my underwear is on backwards. Not that this explains the big blank space to my left. This might be in appreciation of the Bored of Governors who are going to raise our tuition by only 4.5% instead of 9.5%. *Cheese's Spread* has been amputated 5% less than originally intended.

TOP TEN ALLEGED SIGNS THAT RAYMOND PATRIARCA JR. IS NO LONGER THE HEAD OF ORGANIZED CRIME IN RHODE ISLAND

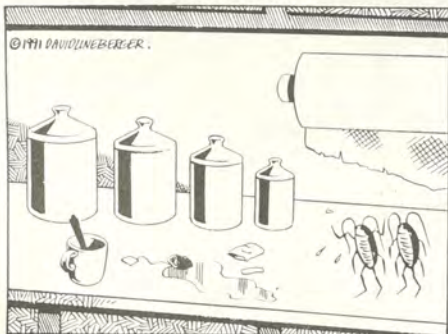
- 10.) He no longer gets to park for free at Mafia induction ceremonies.
- 9.) John Gotti refuses to return his phone calls.
- 8.) Lately, he spends more time talking about tennis rackets than gambling rackets.
- 7.) When he's in jail, he doesn't automatically get the first choice of upper or lower bunk bed.
- 6.) Rodney Dangerfield gets more respect than him now.
- 5.) His secret Mafia nickname has been changed from Godfather to Tinkerbell.
- 4.) Tape recordings of his last Mafia induction ceremony are being sold by K-TEL.
- 3.) Rhode Island politicians seldom mention him as a potential candidate for governor next year.
- 2.) Cement shoe sales have declined dramatically in Rhode Island during the last six months.

AND THE NUMBER ONE ALLEGED SIGN THAT RAYMOND PATRIARCA JR. IS NO LONGER THE HEAD OF ORGANIZED CRIME IN RHODE ISLAND IS...

- 1.) People are no longer afraid to poke fun of him in top ten lists. (Just teasing Raymond.)

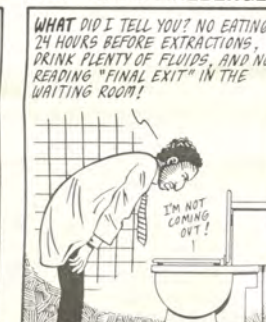
©1991 Tim Sullivan

URBAN NIGHTMARE



"Ugh! We have people! Ew! Ack! Gah! Man, they give me the heebie-jeebies!"

SLUG BLISTERS: FEATURING GARY, ELLEN, & RAYMOND



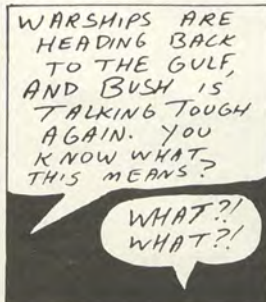
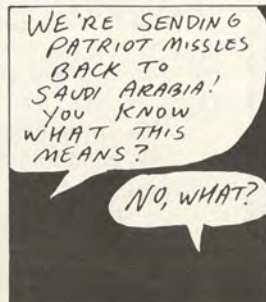
©1991 DAVID LINEBERGER

WARPED WORLD



©1991 ALAN GUNTHER

DARK HUMOR



©1991 ALAN GUNTHER

FOR SALE/RENT

1980 VW Rabbit, 4-speed, air, new paint, brakes, rear shocks, tires. No rust, dents, 2-door, fuel injected, pull-out stereo. Very well maintained, reliable. Asking \$2,195/B.O. -nights 942-4389.

For Sale, Bicycle, men's Italian twelve speed, Centurion Component Racer, loaded; Columbus, Cinelli, Campagnolo, Omega, Araya, perfect condition, featherweight. \$200 offers, 231-4473 or 568-7217.

Two bedroom apt. Fully appliance, 1st floor- 10 Tuxedo Ave. 3 miles from campus, cool neighborhood, apt. fully renovated, parking, laundry facilities, on bus line & private yard. \$425/mo. 521-0532.

28 Tuxedo Ave. 2nd floor, 3 bedroom, hardwood floors, mantle, renovated, fully appliance. Included: heat, hot water, cooking gas, laundry, & parking. 3 miles from RIC, cool neighborhood. \$550/mo. 521-0532.

North Providence: Lovely 5 room, 3 bedroom ranch with finished basement, private yard, garage. Call today! 353-0631 Nancy.

For Sale: 1987 Hyundai Excel GL, 5-speed, 3 door Hatchback, 35 mpg, pull-out Pioneer Stereo, New front tires, \$2,199 or best. Call Billy 232-5254, nights.

House, 5 bedrooms, 1 1/2 baths Lg. living room, kitchen, laundry area, deck, finished porch, new wiring, insulation paint roof, hot water heater, fenced yard, new windows. Riverside, 433-1070 Affordable.

SERVICES

Do you want fast-accurate-WORD PERFECT typing at a fair price? Call... TERRIE 941-8914.

Do you need papers typed at reasonable rates? Call Karen at 231-2582 day or evening

Photography by Berge Ara Zobian - Headshots, portraits, model portfolios, advertising, fashion, editorial, in a relaxed professional studio. "See my

RESEARCH INFORMATION
Largest Library of Information in U.S.
18,278 TOPICS - ALL SUBJECTS
Order Catalog Today with Visa / MC or CDD
ORDERING HOT LINE 800-351-0222
Or, rush \$2.00 to: Research Information
11322 Idaho Ave #206 A, Los Angeles, CA 90025

JOBS JOBS JOBS JOBS JOBS JOBS JOBS

We have the perfect job for you. Just stop by the Student Employment Office at Craig Lee 050 or call 456-8032, and we will find the job just suited for you. A few of our excellent jobs are listed below:

Typist/For RIC Student	#198
On-Call Residential Counselor/Providence	#204
Tutors in College Geology, Spanish, History Biology, Chemistry, Physics, Sociology, Psychology, and Introduction to Human Services/ Warwick and Lincoln	#206
Child Care/Edgewood	#224
Stock Associate/Warwick	#225
Court Researcher/Providence	#226

ANCHOR---Work -Study--- Clerical Aides---3 Positions

portfolio before you decide" Flexible hours, reasonable rates, Visa/MC accepted. 751-1970.

JOBS

Campus Reps wanted! Quality vacations to exotic destinations! Sell Spring Break packages to **Jamaica, Cancun, Bahamas, Margarita Island.** Fastest to free travel and \$\$\$ Call **SUN SPLASH TOURS.** 1-800-426-7710.

Addressers Wanted immediately! No experience necessary. Process FHA mortgage refunds. Work at home. Call 1-405-321-3064.

Fraternities, sororities, campus organizations, highly motivated individuals- Travel FREE plus earn up to \$3000+ selling SPRING BREAK trips to Cancun*South Padre Island*Bahamas/Cruise*Acapulco: 1-800-258-9191.

FREE SPRING BREAK TRIPS to students or student organizations promoting our Spring Break Packages. Good Pay & Fun. Call CMI. 1-800-423-5264

FREE TRAVEL, CASH, AND EXCELLENT BUSINESS EXPERIENCE!! Openings available for individuals or student organizations to promote the country's most successful SPRING BREAK Tours. Call Inter-Campus Programs 1-800-327-6013

MISCELLANEOUS

WANTED- Laser 128 Computer, with or without printer. Call Ray 331-1130 after 6pm.

PERSONALS

Tonya the Detective, thanks for the advice! Everything is A-OK here in the woods. So I plan to be frolicking in my birthday suit. Love Nicki, Thanks again.

Fair Warning: Religious Extremists Don't Survive In The Jungle. -The Savage

Hey Hut- You may have a little bit of a gut but you sure do have a nice butt!

To all Cauldron children: Time to dance the round, draw down the moon. Samhain is nigh. The veil will be lifted. Merry part and merry meet again! Gwendolyn & Morguain

Could it be that Knights really do exist? How can I know for sure? I have known too many false knights to trust another so quickly yet your words make me willing to take the risk. If you should choose to take on the quest to find me, here is a clue- RI:PC871. -The Redheaded Maiden

Mike, Did anyone ever tell you that you are incredibly witty, charming, intelligent, MODEST...Build a bridge and get over it! Love ya, Ester

"What's a cross going to do, she's not Dracula!!" -The Witch's Familiar

S2 & Jaws, You guys are the best. Hang in there, we'll get through this. And when we're 60 years old and sitting in our rockers... Love ya WB

D.S.- S.O.S!! The Love Boat sank and I'm not Mae West! Come rescue me! -Love, Socrates, the Abstract Pseudosyllogism.

Holli- who's your favorite resident? Let's talk about it in your room and stay up till 2am.

Jimi K- We are sorry she cut you twice as deep... But we think you are handsome and funny. We heard you kiss great too!

Alex, Alex baby? Only Kiddin'... Love ya, Lisa

To All Ladies: The M.W.C. Society in Weber R has dissolved; due to circumstances above and beyond our control. We'll miss speaking and being with you, but it is for the best. With love & kisses, Men W/Class

...but wait Alex we didn't try ice cubes or humming- you know I'm ready and willing, and yeah I know I'm sick and demented but you make me feel so good. NOT!!!

David, lets give those guys at the plant something to talk about. Love, your baby!

If they are Bill and Ted, does that make us Princess babes? Yes eexcellent!! I bet Bill could take me on one heck of a journey through time! Love, "Dances with trees."

Scott K: we didn't forget you- remember the "fan club." That was so immature! And so long ago. You're still hot. Stay cool. From: you know who.

Banana, Been 2 margaritaville lately? Well, if your class keeps gettin' you down, I think we'll have to take a trip. May the moon be with you. Love Chief. PS-thaxx 4 being u! Do u really know how much you mean to me? If not, I'll remind you. The times r golden

Nine Inch Cuffs, Where did ya get tha jeans? Maybe, Homer??? Hmm. I just wanted you to know I enjoyed the chicken parm. & the nite at G's Thanx! John.

David, Yes I'm ready to become Mrs. Bunny. I hope you're happy. Two points, yes a low grade remark. Love always, Punkn

Hey Dina- Are you going to Barry's Barry's Barry's this Sunday? NOT!!! Are you sick of it yet?

Nicki- Definateley not as smart as we think but we are definitely more confused! Hello-may I psychoanalyze you? My boyfriend certainly won't let me. Drive 55? Wait-I have a mustang-naturally. See you. Love, T

To the KE Pledges: Have faith guys!! We Can make it through these weeks with strength, grace, and a huge sense of humor. Just remember-- Reach out and touch someone- I'll be there!!-from the KE pledges

The Anchor Classified Ad Form:

Classified ads cost \$1.00 per 30 words or less.
Date of Issue: _____ Date ad placed: _____
Check one: For Sale/Rent Employment
 Personal Miscellaneous
Print Ad, 30 Words or Less: _____

Signature: _____ Date: _____

(1) No full names or telephone numbers will be printed in the Personals column without the express written permission of that individual.
(2) Name of person/organization placing ad: _____
Status (check one) Student
 Non-Student
 Organization
*Social Security Number: _____
*Phone: _____
*This information for verification and office use only.
Classified Ads will be unacceptable if this form is not filled out completely.
Twenty-five free personals are given away each week to Rhode Island College students. Personals forms and depository are located at the Information Desk in the Student Union. Other classified ads may be placed, with payment, at The Anchor, Student Union room 308.

KALEIDOSCOPE

CELEBRATING CULTURAL DIVERSITY

OCTOBER 5-12, 1991

Wednesday, Oct. 2

3 p.m. • *"Multiculturalism, the Politics of Identity, and Social Disease"* Presented by Susan Koppelman (in English 365-01—Contemporary Issues: The Female Literary Tradition), Craig-Lee 152. Sponsored by Women's Studies. Widely known among women's studies scholars as a speaker and workshop organizer, Koppelman's published work includes numerous collections of "lost" literature by women.

Saturday, Oct. 5

7 a.m. • *"Discover Your Roots"* Bus trip to Ellis Island (leave New York 7 p.m. Cost \$25). Sponsored by the Chaplains' Office.

Sunday, Oct. 6

2-5 p.m. • *International Picnic* (Alumni House Lawn). Featuring international foods, dancing, fashion show. Donation: \$5 student; \$10 faculty; \$15 family. A benefit for the Ridgway Shinn Study Abroad Fund.

Monday, Oct. 7

12:30-2 p.m. • *Korean Films: "The Art of Ancient Korean Printing", "National Museum of Korea", "The Koreans"*. Shown in History 210 - Perspectives on East Asian Civilization. Gaige 315. Co-sponsored by the Asian Student Organization and the Korean-American Association of Rhode Island.

1-2 p.m. • *"The Card Party: Dealing with the Deck You're Dealt."* Presented by Doug Curton. Student Union 305. Sponsored by the Campus Center.

7 p.m. • *"Laughing with, not at, people"* Comedy Night in the Coffee Ground. Sponsored by RIC Programming.

Tuesday, Oct. 8

9:30-11 a.m. • *"Contemporary Changes in China"* Presented by Dr. Li Hsi-Cheng, Professor of Finance and Economics, Bryant College (presented in History 210—Perspectives on East Asian Civilization). Gaige 307. Sponsored by the Asian Student Organization.

Noon-1:45 p.m. • *President's Roundtable* President Nazarian will be in the Donovan Dining Center to talk with students.

2-3 p.m. • *"Women of Strength"* Viola Davis. Student Union Ballroom. Sponsored by the Cultural Diversity Planning Committee.

7-10 p.m. • *International Fashion Show* Featuring ethnic dress, and musical performances by "Bolu Fatunmise and the Roots of African Percussion." Student Union Ballroom. Sponsored by the Campus Center, Harambee, and Residential Life.

7 p.m. • *New Music Night in the Coffee Ground.* Sponsored by RIC Programming.

Wednesday, Oct. 9

Noon-1:30 p.m. • *Vocalist Luko Adjaffi* A Haitian singer, his style ranges from French cabaret, folk, reggae to jazz. Fluent in 4 languages, he sings in French, Spanish and English. His songs speak of his love and concern for his people and his newly found love of the U.S. Sponsored by Student Community Government

12:45 p.m. • *Proclamation Ceremony for Cultural Diversity Week.* Donovan Dining Center. Co-sponsored by the Cultural Diversity Planning Committee, the Chaplains Office and Student Community Government.

Wednesday, Oct. 9 (continued)

2-3:30 p.m. • *"The Political Correctness and Multiculturalism Debates in the USA."* Dr. Charles Lemert, Department of Sociology, Wesleyan University will speak on "The Silencing of the West: Multiculturalism in Higher Education." A panel of Rhode Island College faculty will respond: Prof. Rodrigo Carraminana (Math and Computer Science), Dr. Ghislaine Geloim (Modern Languages), Dr. Kenneth Lewalski (Professor Emeritus, History), Dr. Amritjit Singh (English), Dean Richard Weiner, Moderator (Political Science). Sponsored by the Cultural Diversity Planning Committee and the Office of the Dean of Arts and Sciences. Student Union Ballroom.

Thursday, Oct. 10

Noon to 1 p.m. • *"A Servant's Tale: The Underside of Life in Early Rhode Island."* Historian Ruth Hernden will present a dramatic interpretation of the life of Phebe Perkins, an indentured servant who lived, worked, and wandered in Rhode Island in the late 1700s. Sponsored by the Campus Center. Student Union Room 305

1-2:30 p.m. • *Poetry Reading by Jay Wright*, a visiting professor at Dartmouth College, who is a recipient of the MacArthur Fellowship. Sponsored by the Faculty Lectures Committee, English Department, Women's Studies, African/Afro-American Studies, Langston Hughes Center for the Arts.

7 p.m. • *Dandelion Theatre.* Student written and produced skits focusing on issues of oppression on campus. Student Union. Sponsored by the Campus Center.

Friday, Oct. 11

9:30-11:30 a.m. • *"The Use of Storytelling in the Multicultural Elementary School Classroom."* Workshop presented by Len Cabral. Sponsored by the Cultural Diversity Planning Committee. Call Elementary Education, Ext. 8016 to register.

Noon • *"Prayer for the Earth."* Interfaith and Intercultural Service. Student Union Ballroom. Sponsored by the Chaplains' Office.

6:30-9:30 p.m. • *Film: "Age of Success."* Sponsored by the Korean-American Association of Rhode Island. Gaige Auditorium. This film portrays the story of a young man moving to the top of the success ladder in the "yuppie" world of Korea in the late '80s.

Saturday, Oct. 12

6 p.m. • *Upward Bound 25th Anniversary Dinner* Donovan Dining Center.

Other Events

Coffee Ground, International Coffees available all week

Donovan Dining Center "A Taste of the World" The Dining Center will present a different ethnic dish each day of the week.

Alumni Association Cookbook "Culinary Capers II - A Celebration of Ethnic and Cultural Diversity" • The Alumni Association is planning a second alumni cookbook to be published in the fall of 1992. The association is soliciting ethnic recipes from all segments of the College community. Anyone who would like to submit a recipe for this cookbook can pick up forms in Donovan Dining Center and the Alumni House.

