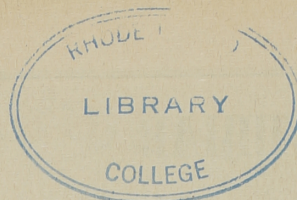


# THE ANCHOR

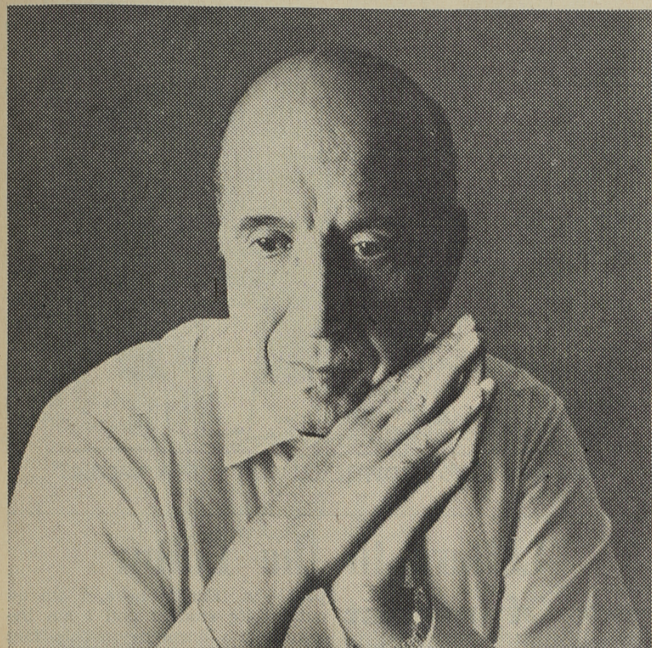


"He Robs Himself Who Spends A Bootless Grief"—Shakespeare

VOL. XXXIV, No. 9

RHODE ISLAND COLLEGE

THURSDAY, FEBRUARY 15, 1962



Carlos Montoya

## C. Montoya Renders Memorable Concert Assembly Responds With Standing Ovation

"The music . . . it must be in you." These words by the world famed flamenco guitarist, Carlos Montoya, sum up the concert presented Tuesday in Roberts Hall. The music is in Montoya and he held a capacity audience spellbound for fifty minutes. The instrument was not the guitar. It was Montoya. The spirit and sensitivity of Montoya flowed through his music and for brief moments over 800 people listened as one entity. Montoya is not an entertainer, he is an artist.

In addition to Montoya's musical genius, he is a person of rare charm and grace. At a coffee hour and reception given for him before the concert, Montoya displayed these qualities which mark a great man. He was courteous, captivating, and sparkling. When asked if he had ever been to school to learn Flamenco, Montoya replied,

"the school is in me." To Montoya, the word Flamenco is synonymous with the word gypsy. There are many Flamenco players in the world, said Montoya, but few have the sensitivity that make the artist.

Montoya is currently touring the United States. On March 24, he will complete his current tour and he will tour Europe. In September he will appear in Japan.

Mr. Montoya stated a definite preference for American and Japanese audiences. He felt that in

America and Japan, the people come to see the artist, while in Europe and other parts of the world, they come to see the other people. The last time Mr. Montoya was in Havana, Cuba, he was much amused by the fact that the people who attended the concert came decked in furs, and they reminded him of polar bears. Mr. Montoya particularly enjoys American student audiences because he feels that they are exacting critics. If they do not like you, he remarked, that's it.

## Faculty Spoofs Through Evening Of Entertainment

It was their once a year night—and what a night it was! The Faculty Musical Revue played to a house jammed with enthusiastic students, and the show the faculty put on was worth every swollen red hand that was raised in applause.

Not knowing what to expect, the students might have been a little apprehensive, but from the first to the last, the Revue turned out to be one of the highlights of Winter Weekend.

The participation of Dean Mierzwa and President Gaige showed a light and informal side of their personalities which, because of their positions, they are not able to exhibit too often. The enthusiastic applause which they received, revealed just how much the student body does appreciate them in their moments of informality. Good humor, and a little kicking up of the heels, are two

things that help bring the students and the administration closer together.

Each of the acts was well presented, and this revealed that the faculty had put time and effort into the production. The revue, it seemed, was not just something they were asked to do and did. It was an expression of cooperation and unity—it was the faculty stepping from behind the lecterns and giving that little extra that as a group they have little chance to give.

The leadership of Mr. Graham helped mold the individual acts into a well-performed and well-presented production. Without his work, the unity of the performance might have been lost.

The performance given by Miss Healey was outstanding. As she glided across the stage into the arms of Mr. Smolski, and then

(Continued on Page 6)

## R.I.C. Edges Willimantic Teachers In Winter Weekend Thriller 68-66

By ADRIAN GRAVES

The Winter Weekend toss-up between RIC and Willimantic on Saturday afternoon saw the home team edge the visitors 68-66 in one of the most exciting and suspense filled games played this season. The stakes in this game were high. The victory insured the Anchormen of a better than even chance of making the conference playoffs. If the team had lost this game they would have missed any chance of making either the conference playoffs or the NAIA tournament.

Willimantic, a third place team in the conference standings, seemed a better than even match for the Anchormen. But, with a starting line-up of Mike Van Leesten, Claude Gladu, Charlie Wilkes, Don Hickey and Jack Wheeler, the Anchormen went against Willimantic with their strongest combination thus bringing another victory home.

In the first half both teams kept tight control of the ball, and the lead changed no less than sev-

en times. Neither team was able to mark a strong advantage, and at the half the score was 32-30 in favor of the Anchormen. The team suffered a momentary morale setback when Mike Van Leesten was taken out of the game after four fouls had been called against him. Although Mike played in only part of the game, he scored 14 points. Mike wasn't as sharp as usual on rebounds, a factor which had to be overcome by Jack Wheeler, who rated well on the backboards for most of the game.

The second half saw Willimantic hit consistently from the outside, and the Anchormen had difficulty in keeping the Willimantic shooters from scoring. In the early minutes of the second half, the Anchormen, sparked by Don Hickey and Charlie Wilkes, drove hard against Willimantic, securing a momentary 10 point advantage. With less than 10 minutes to go, however, Willimantic drove hard, closing the gap and took the lead

(Continued on Page 5)

## Garner Rated As Excellent

The audience came, saw, and was conquered by the undisputable artistry of Erroll Garner at the piano. The Jazz Concert, highlight of RIC's Winter Weekend, was

outstanding and Mr. Garner made it so.

He demonstrated the range that his magnificent talent spans, by playing such songs as "Laura," "Misty," "Stella by Starlight," and a medley from "My Fair Lady." His repertoire included some of his standard numbers also, and these were adapted in style and mood to reflect the tone of his audience.

In the first set Mr. Garner experimented with progressive jazz (and even some rock and roll selections). He eventually settled into a predominately romantic ballad theme. In this vein, one of the highlights of the program was a moving interpretation of "My Funny Valentine."

The accompaniment given Mr. Garner by Kelly Martin on drums and Edward Calhoun on bass added to the excellence of the performance. The skillfulness they showed in following the "Great Improvisor" revealed that they are both outstanding musicians and an asset to Mr. Garner.

A man and a piano—that's all. But every piece was a concert in itself. Every note moved through the silent hall capturing and recapturing the audience, until after five encores, Erroll Garner left the stage and the concert was over.



Garner's improvisations impress RIC Audience



All College Girl K. Crowley, (center) surrounded by her court; from left, J. Monopoli, A. Stanlewicz, J. Krajewski, B. Sciotto, J. Ziochowski, C. Paparella, L. Houle, and P. Gilbert.

# EDITORIAL

## Winter Weekend Awarded High Praises

Congratulations are extended to Ginny Mahoney and her Committee for the excellent planning and coordination that went into making the Winter Weekend of 1962 the finest yet recorded in the history of Rhode Island College.

With perhaps the exception of the Pep Rally, which was poorly attended and publicized, the entire weekend went off like clock-work and, to boot, the remaining events were well attended. The weekend sustained a high degree of participation because the vents were well timed and worthwhile in their own right.

The faculty stunt night was a definite success and the faculty deserves a round of applause for the spirit of cooperation and good sportsmanship they displayed.

The basketball game, besides being a victory for Rhode Island College, was every bit in keeping with the spirit of the weekend. The Dance was well planned and as good a dance as has ever been held at the College.

The concert, instead of showing the usual decrease in attendance, sustained and heightened enthusiasm by presenting Erroll Garner, a popular and extremely accomplished pianist. Mr. Garner was an excellent choice; he was personable and provided an excellent two hours of entertainment.

The buffet was well coordinated and moved quickly. There was plenty of room and plenty of food. The after-buffet party appeared to be one of those after thoughts that never should have gotten beyond the thought stage. Student reaction to the accommodations provided at the Crown Hotel were less than complimentary and most of the students either went home or went elsewhere to round out the weekend.

The Weekend was successful, in the main, because it was well supported. But why was it well supported? The editorial board is willing to bet that it was due to the extremely fine planning and publicity that went into the management of the weekend. Ginny Mahoney and her committee exhibited clearly the caliber of events that can be presented at this College when people care enough to do their very best, when people accept responsibility and honestly work towards success. Hats off to Miss Mahoney. She deserves it!

## From The Senate

On Wednesday evening, February 7, the student senate met for its weekly session. After the minutes and preliminary business, President Dick Danielson introduced Diane Ianucci as succeeding Paula Hanley, former freshman class representative to senate.

Under old business, a report was made that the motion to extend campus library hours to 11 or 11:30 p.m. was brought to Miss Cuzner for approval and was later defeated. Also under old business, Bernie Singleton reported that he went to see Mr. Brown for the possible use of the gym on weekends. Mr. Brown informed Bernie that there would need to be an instructor present if the gym was to be opened and there must be a sufficient demand for its use.

With discussion on the new Campus Chest Fund it was made known that there will be a treasurer and standing committee elected and that the basic structure for the fund has already been established. \$400 is now in the treasury and additional funds are expected from Campus Fund weekend.

Under new business Ron DiOrio moved that the student senate allocate \$400 for the Eastern States Conference that is to be held March 21, 22, 23 and 24. The motion was approved.

A motion by Ginny Mahoney stated that the student senate take a \$20 add in the Winter Weekend program. After much discussion this motion was approved.

Ginny Mahoney also reported that this year's Winter Weekend ticket sales are 11.6% higher than those of last year. At present, 740 seats have been purchased for Erroll Garner's performance and 430 for faculty stunt nite. When ques-

tioned about this year's expenditures, Ron Gardner, Winter Weekend business manager, stated that they were 8% higher than those of last year. This is only a purported 3% higher than the expected 5% rise.

The meeting adjourned at 7:00 p.m.

## Good Neighbor Pledge

"Since the constitution of our organization states that our objectives are service to the community and service to the school, Sigma Mu Delta has undertaken the "Good Neighbor Pledge" as its first project." This statement was issued by the Project Chairman, Joan McNally, '63. In answer to the question, What was their interest in this pledge? she answered, "our interest is a purely educational one. We feel that only through proper education can we achieve better relations between groups, and foster healthy attitudes." She went on to say, that such a pledge should be made available to the student body, so that they might have an opportunity to read it and decide for themselves if they should sign it.

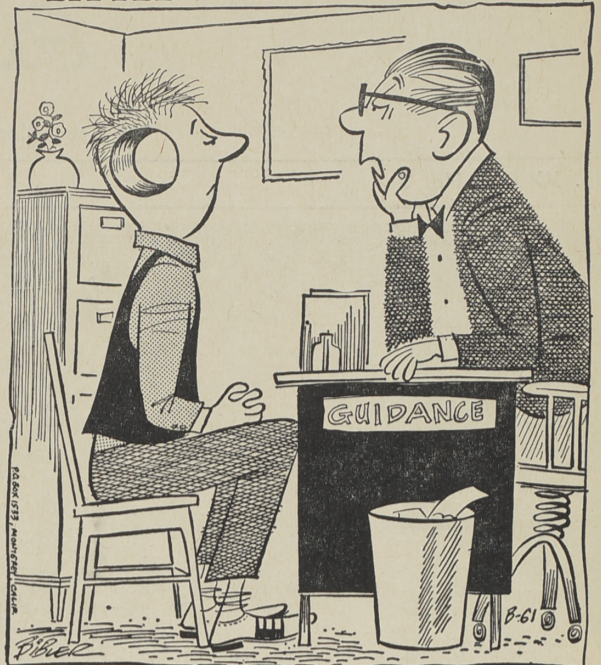
The campaign, which is being held during National Brotherhood Week, January 11-25, will seek signatures to a pledge which sets forth that every person has the moral right to rent, buy or build a home anywhere without restrictions based on race, religion or national origin.

Each organization on campus has been contacted, and a booth has been set up outside the cafeteria to explain the pledge and provide the pledge sheets for signatures.

## Letters Welcome

The Anchor welcomes letters to the editor. ALL Letters must be signed although not necessary to publication. Place letters on mail rack care of Carl Smith.

## LITTLE MAN ON CAMPUS



"Now, son, how's it happen you want to be a teacher?"

## Letters to the Editor

### Lack Of Interest Deplored

Dear Editor:

I am a Protestant. I realize that I am in the minority at this college. However, I feel that it is most imperative that those of us who are Protestants have some sort of organization on campus to provide for our needs. When I came here, I was informed that there was a Christian Association at this college for Protestant students. I joined this association, only to discover that it was not functioning at the present time. This is ridiculous. It seems that the officers of this organization have had a great deal of difficulty in securing an advisor. Consequently, we Protestants have no place to go to discuss our religious

problems. Furthermore, I am an out-of-state student and I am living at the dormitory. This fact makes it almost impossible for me to attend the religious functions sponsored by the local Protestant churches. I have neither the means of transportation nor the time to attend these functions. The Catholic residents at the dormitory have even had the opportunity to discuss their problems with a local priest at the dormitory. The Protestant residents have had nothing of this nature offered to them.

During this time of my life, I feel that it is most necessary for my religious beliefs to be developed and stimulated — not neglected or forgotten. Something must be done to remedy this situation, and that something must be done quickly!

Most sincerely,  
Jill Bollette

# THE ANCHOR

"AN INDEPENDENT STUDENT VOICE"  
Assistant Editor's Issue

Editor-in-Chief ..... Carl Smith

### Editorial Board

Assistant Editor ..... Margaret Murphy  
Managing Editor ..... Carol Loughrey  
News Editor ..... Judy Fairhurst  
Feature Editor ..... Lorna Duphiney  
Sports Editor ..... Adrian Graves  
Make-Up Editor ..... Diane Giragosian

Photography Editor ..... Michael Iaconna  
Business Manager ..... Mary Jane McGuinness  
Exchange Manager ..... Dorothy Hansen  
Circulation Manager ..... Steve Grady

News Staff ..... Jane Ballantine, Kathleen Barlow, Loretta Cimini, Diane DeToro, Ron Gaudreau, Paul Georgianni, Carol Glew, Mary McWey, Lucille Nolan, Ann Schattle.

Feature Staff ..... Paul Bessette, Joyce Caldwell, Betsy Boyce, Barbara Babiec, Jerry Rezendes, Lorna Duphiney, Rita Kelleher, Eleanor Richstetter, Paula Whitehead, Maureen Brennan.

Sports ..... Ed Schultz, Denise Garneau

Layout Staff ..... Carol Forlasto, Maureen Mackie, Barbara Ciccio, Anita Levy, Dick Liscio, Tommy Izzo, Paula DiSanto, Lois Mosef, Marsha Malcolm, Pat Hincks

Photo Staff ..... Mike Iacona, Charles Anderson

Typing ..... Jane McGarrahan, Lucille Nolan

# Win IN THE COLLEGE BRAND ROUND-UP

### PRIZES:

- 1st Prize—1 Webcor Stereophonic Console Phonograph.
- 2nd Prize—1 Philco FM Table Radio.

### WHO WINS:

- 1st Prize will be awarded to any group, fraternity, sorority or individual accumulating the highest number of points.
  - 2nd Prize will be awarded to any group, fraternity, sorority, or individual accumulating the second highest number of points.
- Contest open to all students.

### RULES:

Each empty package submitted on Marlboro, Parliament, or Alpine will have a value of 5 points. Each empty package of Philip Morris Regular or Commander will have a value of 10 points.

Closing date will be April 4, 1962 at 3:00 p.m. Location of turn in point Cafeteria—Student Center. Entries will not be accepted after closing time. Empty packages must be submitted in bundles of 50. Separate your 5 and 10 point packages.

Get on the BRANDWAGON . . . it's lots of fun!

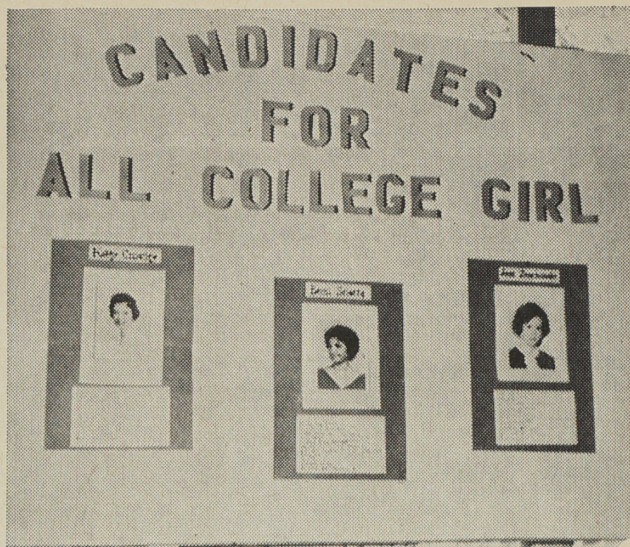
SAVE YOUR PACKS

Marlboro Parliament Alpine Philip Morris—Reg. & Commanders



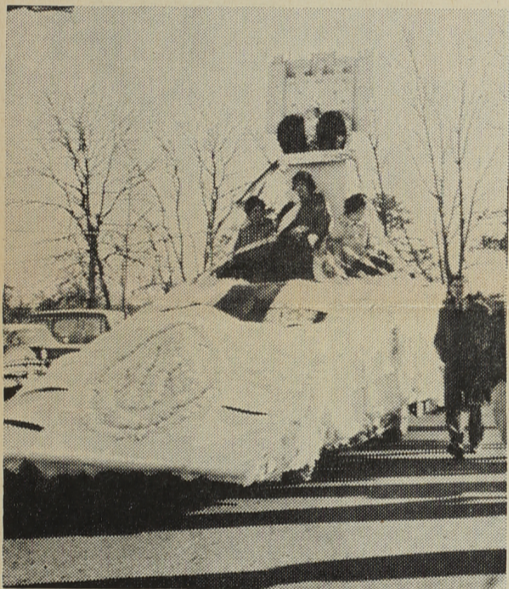
I know it's worth it . . . but?

*W  
I  
N  
T  
E  
R*



Three queens . . . who can make a choice?

*FROLIC,*

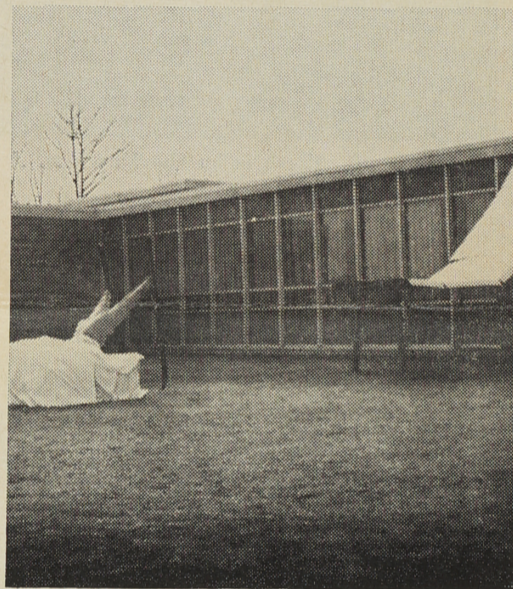


We made it, but its about those sharp corners.



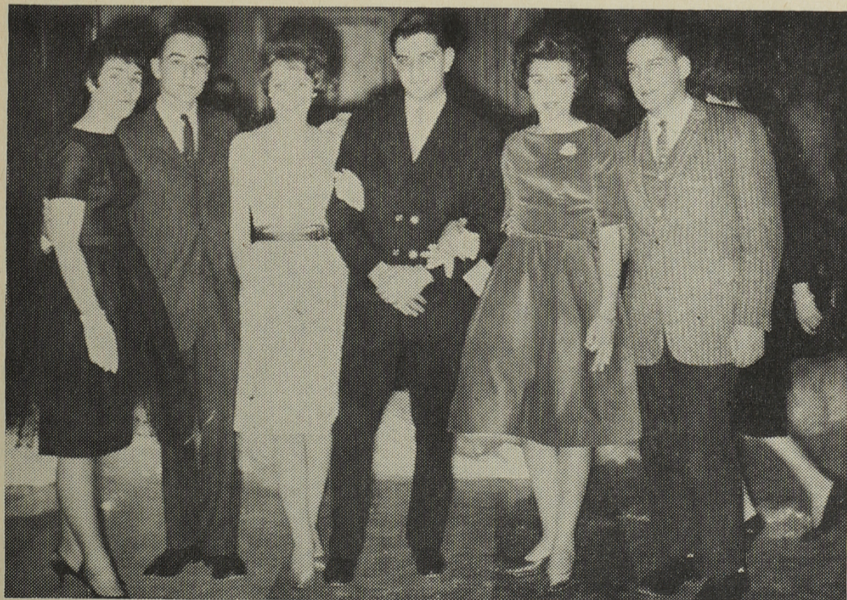
Winter Weekend  
All College Girl, Kathy Crowley.

*FUN,*



The fraternity wins  
contest head over heels.

*AND FOND*

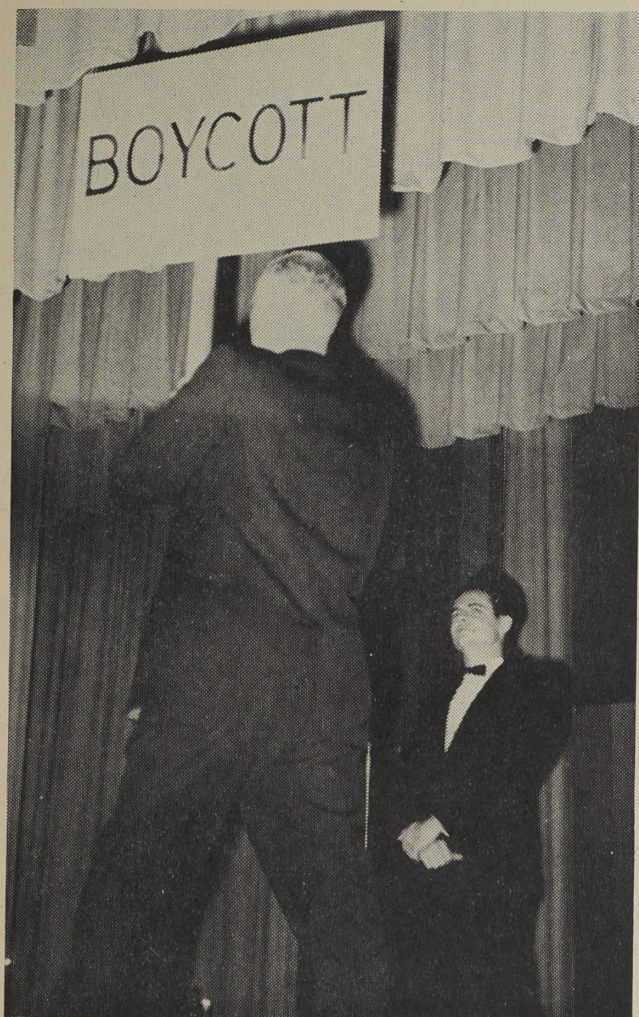


A few of the many at the All College Ball.

*M  
E  
M  
O  
R  
I  
E  
S*



A moment of relaxation before the next dance.



Truth is on the March . . .!



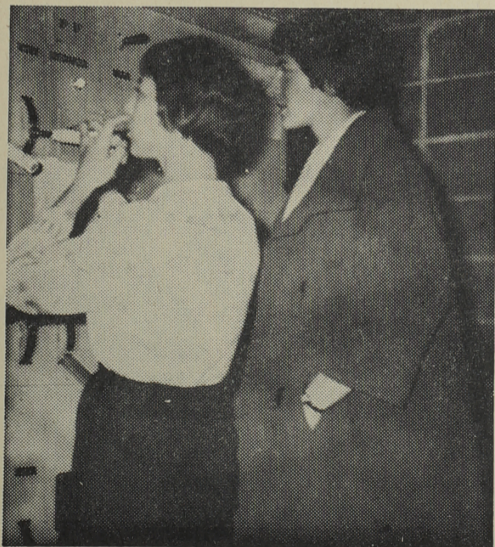
One dance step is worth a thousand words.



Dramatic Dialogue by Mr. Tillotson.



They Call me hard-hearted Hanna . . . !

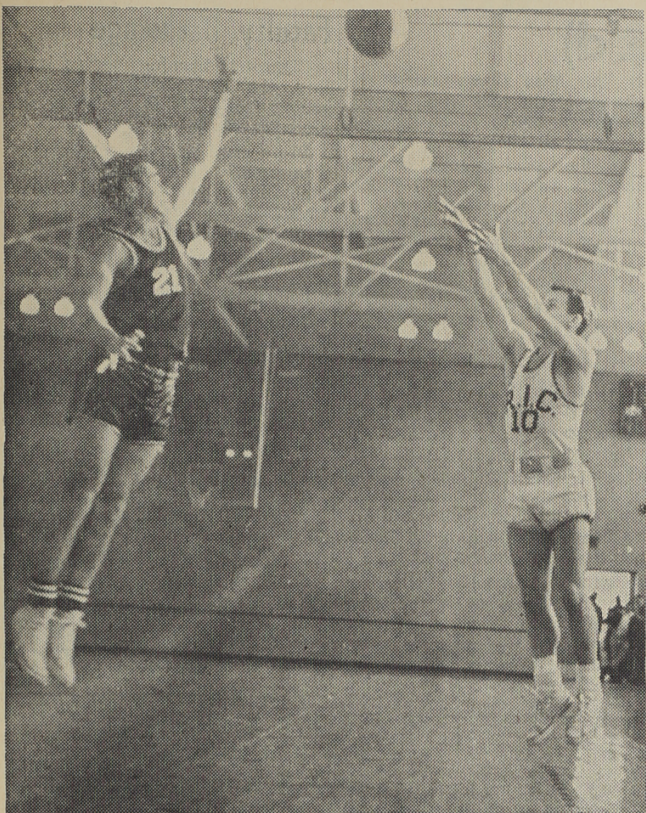


Moment of decision.



"You're rotten to the core, Maude."

A  
F  
A  
C  
U  
L  
T  
Y  
  
F  
I  
R  
S  
T



Wilkes Sinks Winning Point

### Willimantic (Cont'd)

(Continued from Page 1)  
with less than seven minutes to play. After this the lead changed no less than five times, and it wasn't until Charlie Wilkes scored in the last two minutes of play that the Anchormen were able to keep the lead. Using the full court press, the Anchormen held on to a slim two point margin and successfully shut out Willimantic in the remaining seconds of play.

This is the second time this season that the Anchormen have edged Willimantic by a two point margin. In league standing, RIC is tied for third place with Willimantic on a record of 15 wins and 5 losses. The final decision as to whether or not the Anchormen will make either of the playoffs depends now on the outcome of final games that the three top teams, Worcester, Salem, and Willimantic, have to play.

### Anchormen Are Victorious Twice

RIC's Anchormen added two games to their win column by defeating Bridgewater and Westfield State Teacher's Colleges 63-56, and 60-56 respectively.

In a game played on the Bridgewater court on Feb. 6, the Anchormen scored the first of the two victories, 63-56. The game got off to a slow start, with the first field goal being scored only after four minutes of the game had elapsed. The first half featured some outstanding defensive playing on the part of RIC, and especially on the part of Charlie Wilkes. The "mighty mite" held Bridgewater's high scorer to 8 points in this portion of the game. The effectiveness of co-captain Don Hickey's playmaking also contributed to the Anchormen's success in this half. Don's fine passing set up many plays and led to a number of baskets. The score at half time was 34-32 in favor of RIC.

In the second half the Anchormen took charge of the game. Outstanding passing and shooting and the rebounding of Mike Van Leesten and Jack Wheeler especially in the last three minutes of play, insured the victory for RIC.

On Feb. 8 the team met Westfield State Teachers College for the third time this season. In this game the Anchormen took an early first period lead and held it throughout the game.

The second half was marked by rough clean play on the part of the players of both teams. RIC held onto its slim lead throughout the second half, but Westfield didn't tire, keeping within a few points all the way. Fast breaks and good passing gave the Anchormen the victory. Charlie Wilkes was high scorer with 20 points. Jackie Wheeler had 11 points and Bob Sheldon had 8 points.

## Students React Favorably To Winter Weekend

With only a few minor criticisms, Winter Weekend was, undoubtedly, a tremendous success. The general consensus lists Errol Garner as the weekend's highlight with the faculty Musical Revue following as a close second.

In a poll conducted by the Anchor many undergraduates commented on the practical favors given out at the Saturday evening ball. They stressed the usefulness

of the ashtrays and the manner in which they were given at the end of the evening. By giving them at this time the couples avoided the problem of leaving the ash trays behind or possibly breaking them.

However, there were a number of criticisms concerning the decorations in the cafeteria and mixed lounge. When asked, many students said that they did not remember any decorations with the exception of two figures at the rear of the lounge. Other students remarked on the absence of chairs in the ball room and the cumbersome manner in which the queen was crowned.

But, when the students were asked if they believed Winter Weekend was a success all answered YES! It was very well planned and extremely entertaining.

Some comments were "faculty musicale was terrific," "Didn't believe the library could look that good," "Art Tancredi is a master of the waltz," and "It was fun, fun, fun; better than Santa Claus." All agreed that faculty stunt nite was an excellent way to begin the weekend. It raised the expectations and promised an enjoyable three days. That promise, according to the majority of the students, was most decidedly fulfilled.

### First Elections Held

Officers have been elected to fill the offices of Sigma Mu Delta. They are: President, Virginia Mahoney; vice president, Meg Murphy; secretary, Mary McWey; treasurer, Geraldine Freitas; social committee chairman, Carol Anderson; project chairman, Joan McNally.

A coffee hour will be held on Monday, February 19, at 8 p.m., in the Alumni Lounge, Roberts Hall. All women of R.I.C. who have an accumulative index of 2.2 and are interested in joining Sigma Mu, are invited to attend this coffee hour.

"The purposes of the organization," as stated by Ginny Mahoney, president, "are to serve the college, the community and each other, and to provide social events. The first project of Sigma Mu Delta is to bring the Good Neighbor Pledge to the campus and to make the students aware of it. In this way," said Ginny, "we can serve the College by making the students aware of the pledge and by giving them the opportunity to sign it."

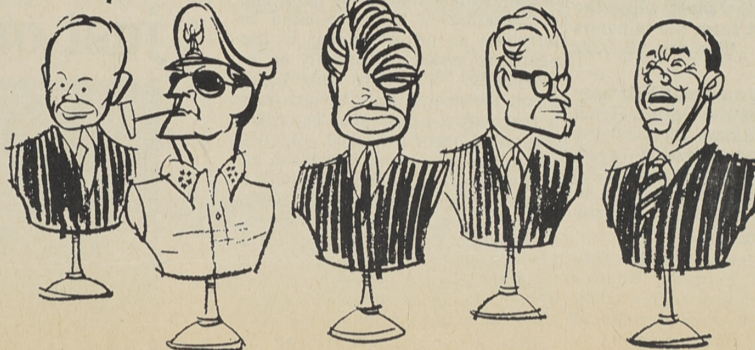
### Dance Club to Meet

The Apprentice Dance Club will meet on Wednesdays, from 5 to 6 o'clock in Whipple Gym, room 111. The Apprentice Club is open to all interested and is designed for those who have had no dance experience as well as those who have had some previous training. The club offers an opportunity for those interested to become acquainted with and develop a skill in basic dance techniques; students will also have the opportunity to begin work in composition.

Those who participate in the Apprentice Club will be eligible to audition in the spring for membership in the Modern Dance Club.

## Check your opinions against L'M's Campus Opinion Poll #17

### 1 Who is the greatest living American?



### 2 What's your favorite kind of date?



dance  houseparty

walk & talk  a few brews with friends

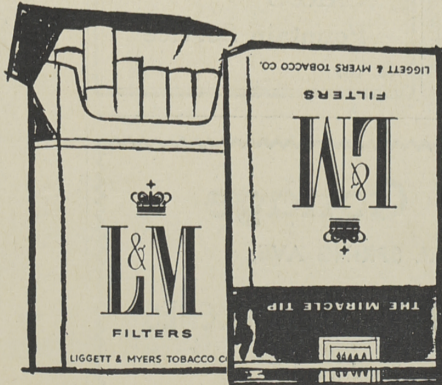
### 3 Do you smoke an occasional pipe as well as cigarettes?



Yes  No

## Expect more, get more, from L&M

It's the rich-flavor leaf among L&M's choice tobaccos that gives you **MORE BODY** in the blend, **MORE FLAVOR** in the smoke, **MORE TASTE** through the filter. So get Lots More from filter smoking with L&M.



### HERE'S HOW 1029 STUDENTS AT 100 COLLEGES VOTED!

No	54%
Yes	46%
With friends	20%
a few brews	
houseparty	28%
dance	32%
Other	49%
MacArthur	5%
Goldwater	6%
Stevenson	7%
Eisenhower	12%
Kennedy	21%

Get with the Grand Prix... Enter today, enter incessantly!

**HELP KEEP  
R. I. C.  
CLEAN**

For the finest in flower arrangements



**SCOTT the Florist**

Incorporated

827 Broad St. Prov. 7, R. I.  
WI lliams 1-4440

## Janus Meets Difficulties Promises To Be Best Yet

The 1962 *Janus* is presently progressing smoothly and efficiently despite earlier difficulties that had to be overcome.

### Dorm Chatter

At a special Executive Board meeting on Saturday, February 3, three girls were appointed to fill the offices of president, secretary, and social chairman. Selected were Marcia Pettine, Penny Knight, and Lorna Duphiney, respectively.

Several new girls moved into the dorm after semester break and a few moved out. There are now 92 girls in the dorm—that leaves only 52 empty rooms!

Mary Hargreaves and her committee worked hard to finish the dorm's display for Winter Weekend before the Friday noon deadline. An energetic group moved the display from the dorm to its resting place outside the ladies lounge Thursday night. Bursts of laughter were heard as nine girls carried the backdrop up the road, as well as while the display was being put into place. "Mama and Papa Greene" stood in front of the "dorm" in the snow, while the girls looked out from the windows onto the scene. This was "R.I.C.'s First Family."

A Workshop was held February 3 and 4 to revise the Dorm's Handbook. Dean Mierzwa attended the Saturday afternoon session to advise the girls as to revisions. The revised rules have been brought to the Dean and are being mimeographed for the girls.

Some of the revised rules were put into effect February 8 after the Council meeting. After much discussion, the Council decided to hold a General House Meeting to inform all the girls of the new rules when the revised handbook is received. One of the major discussions centered around a weekend "campus," which is given for an accumulation of four violations in one category. The "campus" extends from 8 p.m. on Friday until Monday morning. The girl must be in her suite all day, and in her room from 8 p.m. till morning. She may have no visitors and no phone calls after 8 p.m., and she must sign out when she goes to meals and church. The campused girl may go to the library on Sunday for a few hours if she is campused for room violations; but otherwise—no library.

There is now a Fire Captain in the dorm—Geri Freitas. She will talk to the Fire Department to find out the fire regulations, and then she will organize and conduct a fire drill when the residents least expect it.

The residents will again be eating their evening meal in the faculty dining room beginning this week. Five residents will act as waitresses, and they will set the tables, serve the food, and clean up afterwards. Dinner will be served at 5:30. Those having classes until 6 will be served when they get out of class.

The Council voted to have a quarter page ad in the *Janus*.

The residents were reminded that the grass in front of the Hall needs to grow so they should use the sidewalks.

Janice Carbone, editor-in-chief, revealed that through no fault of the staff members of the *Janus*, the senior pictures will not be available for another month. This delay was brought about because of the professional photographer's inability to meet the deadline, however, because of the efforts of Mike Iacone, a student photographer, all deadlines have now been met.

The cooperation of the student photographers helped to overcome the difficulties, remarked Janice Carbone. According to Jan, next year's editor will be chosen from those Juniors who have actively participated in this year's book. The Juniors are urged by Jan to increase their efforts and participation.

There will be many changes in this year's *Janus*. The publication has been enlarged from 164 to 180 pages. The book contains individual sections for each class along with many colored pictures. Informality is being stressed within, especially towards pictures of the faculty, activities, and undergraduates; otherwise, the format of the book is formal.

The business manager, Ron Gaudreau, stated that each club and organization is being solicited to purchase an advertisement in the yearbook, either collectively or individually. They are also being given the opportunity to purchase a yearbook for their club or organization's library for \$3.00. A 10% commission is being given for all new ads placed in the book with a three percent commission being given for all old ads. Anyone wishing to place an ad can do so by contacting Lori Cimini.

Although many orders for copies of the *Janus* have already been received, faculty members and alumni are reminded that orders are presently being taken and that they are urged to place their orders as soon as possible.

In the photography department, Mike Iacone, activities co-editor, said, "I think irrespective of the major setback we had, this year's *Janus* will be one of the better books seen on this campus."

The book has been planned in informal balance, with the photographs being arranged to tell their own story, thereby allowing for limited captions. Progress has been made so well that the layout staff has been able to participate in planning the undergraduates' individual sections with them.

With all the hard work, new ideas, and efficiency that is being demonstrated by the staff members and advisor of the 1962 *Janus*, this book promises to be a challenge for top honors amongst all earlier campus yearbooks.

### ANTHONY'S PHARMACY

1243 Chalkstone Ave.

CANDY  
COSMETICS  
CARDS

Fountain Service

No. 169

## Hillside Cottage

1864 MINERAL SPRING AVE.

COMPLETE FOUNTAIN, SANDWICHES

Open 11-9 — Sundays 1-6

LOCATED ½ MILE BEYOND FATIMA HOSPITAL

## Review (Cont'd)

(Continued from Page 1)

passed to Mr. White and Mr. Maxwell, who were diligently counting their one two threes, she exhibited a remarkable talent for comic dance. If it were at all possible to select the best act of the evening, Miss Healey and her "boys" would have the nod.

Mr. Richard Castellucci gave an unexpectedly delightful performance. His solo part with the Un-teacheables was full of expression and his "haming" was well done. If it had been in either French or Spanish, it could not have been more enjoyable.

The dramatic reading by Mr. Tillotson was a well placed dramatic relief element. The high pitch comedy might have become wearing, if it had not been for the moving reading of Mr. Tillotson. The only word that is capable of expressing his performance is excellent.

The "thip" was sailed smoothly by Miss Ducey, so smoothly she was brought back for a second bow. The College has an anchor, and now finally a "thip" to go

with it. Miss Ducey should be thanked for the launching, even if not with a bottle of champagne, then with all those baby tears.

The fine performance of Ben and Carla was an example of just how much hidden talent lies in the faculty members of R.I.C. Dr. Benjamin and Mrs. Thomas were pleasing and charming to watch and listen to. It was their once a year night—an! what a night it was.

### Episcopal Speaker

"Intermarriages" was the topic of Reverend James Annon of West-terly who spoke on February 8 at the dinner meeting of the Episcopal Group of Rhode Island College. The meeting was held at St. James' Church, North Providence.

"Contrary to popular belief," he said, "thirty percent of the intermarriages are outside of the faiths of the two parties involved."

Following the talk, a lively discussion ensued.

### Faculty Backstage

Cigarettes burning, nerves jangling, the thump-thump-thump of pacing feet—this is the show behind the show.

Profs were nervous—even those who seemed so composed before their Monday morning classes had advanced cases of the jitters five minutes before curtain time.

"I'm always cold when I go on the stage; now I'm frozen!" was a comment of one veteran.

Another remarked, "Wait until President Gaige sees me in this get-up! I won't be here next year for sure!"

"Close your eyes! Stop shaking! I can't get this makeup on straight! Please!!!!"

Backstage everyone becomes the same—nervous! And it's no different with faculty members.

**SANDWICH KING**  
Tasty Submarine Sandwiches  
1003 Smith Street  
opp. La Salle Academy  
Hrs. 10:00 a.m. — 11:00 p.m.  
MA 1-8826

## New low-cost luxury in two just-out Chevy II Nova sedans



• Luxury and low cost have never been more beautifully blended than in these two newest additions to the Chevy II line! Like their running mates—the Nova 400 Sport Coupe, Convertible and Station Wagon—they have the same more-for-your-money features that have made Chevy II the winner of *Car Life* magazine's Engineering Excellence Award for 1962. Soft-riding new Mono-Plate rear springs, proved in the equivalent of 2,000,000-plus test miles. Thrifty 6-cylinder engine

that gets more "git" out of a gallon of regular. Body by Fisher roominess that fits big families and small parking places. An easy loading vacation-sized trunk. New ideas that save on upkeep. Plus trim, tasteful styling, inside and out. See the smart, sassy, saving Chevy II Novas—and the other sensibly sized, sensibly priced Chevy II models—at your Chevrolet dealer's.

## Chevy II Nova

CHEVROLET

New Chevy II Nova 2- and 4-Doors—plus a wonderful choice of other Chevy II models



Nova 400 Sport Coupe



Nova 400 Convertible



Nova 400 2-Seat Station Wagon



300 4-Door Sedan



300 2-Door Sedan



300 3-Seat Station Wagon



100 4-Door Sedan



100 2-Door Sedan



100 2-Seat Station Wagon

See the new Chevy II at your local authorized Chevrolet dealer's