



WHAT'S NEWS

AT RHODE ISLAND COLLEGE

JAMES P ADAMS LIBR RI COL
600 MT PLEASANT AVE
PROVIDENCE RI 02908

Vol. 7, No. 27 April 6, 1987

Joe Costa and Special Services: *'It's Been A Grand Experience'*

by Johanna Bennett

Picture if you will, a small and barren office. The walls are plain and white with only a picture calendar to adorn them. Desks, shelves, and every conceivable empty space is overflowing with overstuffed folders, piles of computer printouts, and pads full of notations. The atmosphere is chaotic, but "friendly" with students and staff chatting freely among themselves.

If you can picture such a place, then you can also picture Joseph Costa, director of special services. He seems to be a man with a lot to do and little time to do it in.

Providing the support services and counseling necessary to handle the problems faced by low income, high risk, handicapped, and minority students dominates one's life. Forty hours and more a week is the "norm." "It's much more than fulltime," claims Costa, "much, much more."

Everything began for Special Services in 1968 — historically, one of the most turbulent years for America.

With the assassination of Dr. Martin Luther King Jr., the American black community turned its eyes towards the American colleges and universities for its new generation of leaders.

At the time, Rhode Island's three state institutions (Rhode Island College, University of Rhode Island, and Community College of Rhode Island) combined, had only 65 black students. In 1968, a college education was not readily available to the average black youth.

This trend continued until 1970 when the federal government, for the first time, approved the funding of Special Services and introduced the concept to the American college.

To a conservative education system,



JOSEPH COSTA

Special Services was a shock. Taking what Costa termed "disadvantaged, high risk, low income students" and giving them a shot at a college education was considered at the time, a radical step, he says.

The new and "liberal" program had little support those first few years. As Costa put it, "There were those who supported us, and those who didn't. They felt the program was a waste, and refused to see the potential of the kids involved."

The big change for Special Services came in 1971, which just happened to coincide with Costa's appointment to the department.

Word of the program's success and influence spread through the country, according to Costa and the program was inten-

(continued on page 6)

Rhode Island College finds: *Students still choosing junk/fast foods*

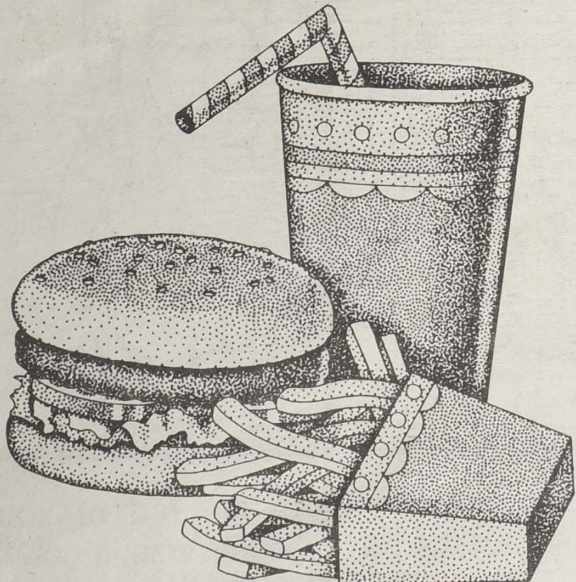
by George LaTour

Rhode Island College students these days are being watched by two University of Rhode Island students, whether they know it or not.

The watching is taking place in Donovan Dining Center where the URI seniors are taking a peek at what students here are eating for lunch.

And, what they're finding -- more often than not -- is not good! Not good for Rhode Island College students or any students anywhere for that matter.

(continued on page 6)



Symposium, reception set to honor M. Wright April 14

"Time, Space and Culture: A Symposium on Modern Geography" is the title of a special presentation to be offered at Rhode Island College to honor Prof. Marion Wright of the anthropology/geography department upon her retirement from the college. Wright is the senior professor on the faculty in point of service.

The symposium, which is scheduled for room 050 of the Fogarty Life Science Building, will be at 2 p.m. April 14.

It will describe the resurgence of interest in teaching and research in modern geography. This increased attention to geography is due in part to the innovations brought about by the computer in the processing and displaying of geographic data.

Growing awareness of the significance of geography regarding many of the the pending global issues also contributes to the increased interest in teaching the subject and will be discussed at the symposium.

Dr. Risa Palm of the University of Colorado will be the keynote speaker. A panel of respondents will react to the the topic. Serving on the panel will be Dr. Sam Natoli of the Association of American Geographers and Dr. Roger Kasperson of Clark University. Moderator of the symposium will be Dr. George Lewis of Boston University.

Immediately following the symposium—at approximately 4 p.m.—there will be a reception for Wright at the Faculty Center.

Both the symposium and the reception will honor Wright upon her retirement from the college.

Wright has been a member of the Rhode Island College faculty since 1946, shortly after she earned her undergraduate degree at the college.

She has been a full professor for 22 years. Widely known for her research and publications on Rhode Island, she is co-author with fellow department member Prof. Robert Sullivan of *The Rhode Island Atlas*, the first such publication of its kind in the state.

Wright has also published materials related to the teaching of geography for the National Council for Geographic Education, The Providence School Department and for Ginn and Company textbooks.

In her research Wright has traveled and worked in every culture area of the world.



MARION WRIGHT

She has been to 89 different nations.

Wright has made use of these extensive field experiences in her classes, integrating materials gathered in her travels into the courses she has taught.

She is known throughout the state for her workshops and seminars offered before school audiences, educational groups and civic organizations.

Wright has also served as a consultant on numerous grants and projects. She has participated in the activities and programs of the Rhode Island Historical Society, the Western Rhode Island Historical Society, the Providence Preservation Society and Save The Bay.

At Rhode Island College Wright has served on the Council of Rhode Island College every year she was eligible and has been a repeating member of all the standing committees of the college.

Twenty years before the college was to place a requirement for other cultures in its general education curriculum, Wright introduced interdisciplinary courses on Africa and Asia to the curriculum.

Her department has expressed great pride in her accomplishments and deep appreciation for her contributions to the college, and extends an invitation to the campus and Wright's many friends to honor her on the occasion of her retirement.

For more information call Dr. George Epple, chair of the anthropology/geography department at 456-8005.

INSIDE

- Plan minority reunion.....2
- Team-teaching anthropology.....3
- Focus on U.S.- Soviet race.....3
- Oklahoma coming.....4 & 5
- France Today.....7
- Avengers to perform here.....8

They beat Harvard for 1st

Rhode Island College Debate Council members Richard Farley and Paul Yates bested the Harvard University team, taking first place in the Providence College Parliamentary Debate Tournament March 29 at P.C.'s Aquinas Hall.

Harvard came in second from a field of 40 teams from such institutions as the University of Pennsylvania, Fordham, University of Connecticut and Swarthmore, reports Dr. Audrey P. Olmsted, council advisor.

Next the Rhode Island College debaters were scheduled to take on no less an opponent than the Oxford Debating Union from Oxford University, England, on April 1.

That oratorical clash -- debating the topic "The Generation that Raised Us Has Failed Us" -- was held at 8 p.m. in the Student Union here.

As *What's News* went to press, Olmsted indicated that the college president herself, Dr. Carol J. Guardo, may just stop by to urge on the home team for that one.

Six from college discuss co-op ed at Jersey State

Administration and faculty members, as part of the on-going discussion of cooperative education at Rhode Island College, met with 15 of their counterparts at Jersey City State College March 19-20 and attended a day-long conference there.

The conference, co-sponsored by Jersey City State College and the National Commission for Cooperative Education, featured Dr. Alexander W. Astin, author and nationally recognized educator.

Jersey City State College has recently received a \$5.7 million State Challenge Grant to expand its co-op education program, says Ellen Weaver Paquette, coordinator of cooperative education here.

Attending, in addition to Weaver Paquette, were Dr. Gary M. Penfield, vice president for student affairs; Dr. James E. Bieren, associate dean of the Faculty of Arts and Sciences; Dr. Robert E. Hogan of the English department; Dr. Mark E. Goldman of the communications/theater department, and Jules Cohen of the economics and management department.

Do you need...

FORD FIESTA 1978: Ghia model. New clutch, upholstery, exhaust, struts, water pump and more. Michelin radials. Body nearly perfect. Front-wheel drive. Cheap and peppy transportation that looks good and goes in snow. First \$650 takes it. 456-8133 or 231-6823.

SEARS FREEZER: Upright frostless. \$100. Call Ext. 8132 or 943-0939 after 5 p.m.

APARTMENT FOR RENT: Off Mt. Pleasant Ave., Farm Street. 2-bedroom luxury, fireplace living room, appliances/dishwasher, new wall-to-wall carpeting, tiled bath with separate shower stall, washer/dryer hookup, garage with opener, alarm system. \$650 per month plus security deposit. Call 277-5883 days; 521-7081 after 6 p.m.

1983 SUZUKI: For sale - 450GL. Very low mileage. Excellent condition. \$1,000. Call Linda after 5:30 p.m. at 781-2282 or 456-8237 between 8:30 and 4.

Focus on the Faculty and Staff

Dr. Mary M. Wellman, assistant professor of counseling and educational psychology and director of school psychology, has had a paper entitled "Child Sexual Abuse: Attitude Differences of Women and Men" accepted for presentation at the 95th annual American Psychological Association convention in New York August 28-Sept. 1.

2nd minority alumni reunion planned May 2

Rhode Island College is planning its second minority alumni reunion for Saturday, May 2. This year the reunion is planned to be held at the Marriott Inn in Providence.

"Back to the Future: A Reunion of all Rhode Island College Minority Alumni" is the theme, reports Jay Grier, assistant director of student life for minority affairs, who says about 200 minority graduates are expected from the list of 400 graduates for which the college has current mailing addresses.

The first such reunion was held on campus in November of 1984. Grier indicated that the turn out then was encouraging.

Faculty and staff members of the college also are invited to this year's event.

Cocktails are scheduled for 6:30 p.m. (cash bar), with a buffet-style dinner at 7:30 and dancing until 1 a.m.

Ticket cost per person is \$18.50. Reservations should be made by no later than April 17. For tickets or more information contact Grier at 456-8061.

Plan econ alum dinner dance

Rhode Island College Department of Economics and Management is planning its first alumni dinner dance for Saturday, May 16, at 7 p.m. in the college's Donovan Dining Center.

Dr. Joel M. Fuerst, department chair, indicated in his announcement that this is the first of what would be an annual event.

He said the department's list of its alumni may not be complete, and asks that any graduates from the econ/management department who have not received communications regarding this event contact the department as soon as possible and tell other alumni who may be interested as well.

The dinner will be buffet-style and will include a wine-cocktail party. There will be dancing until 1 a.m.

Bureau of Grants and Sponsored Projects: Request for proposals

(The Bureau of Grants and Sponsored Projects will be providing information about requests for proposals (RFPs) on a regular basis in this column. Anyone interested in obtaining further information or applications and guidelines need only circle the number of the RFP on the coupon below and send it to the Bureau in Roberts 312.)

1. Fragrance Research Fund: Grants for Studies on the Effects of Odor on Human Behavior and Well-being. Proposals from researchers in fields of clinical, developmental, personality, social and physiological psychology are encouraged. The Fund will provide consultation and assistance to researchers who have not previously worked with olfaction. DEADLINE: May 15.

2. Indo-American Fellowship Program: Advanced Research in India. Program offers educational exchange for Americans who are not India area specialists and who have limited or no prior experience in the country. Awards offered in all academic fields and other professional areas such as architecture, business, law, museum work and creative arts. Selections made on the basis of both project and scholarly/professional merit. Both short-term, two to three months, and long-term, six to ten months, research fellowships will be awarded to applicants at the postdoctoral or equivalent professional level. Basic stipend will be \$1,500 per month. DEADLINE: June 15.

3. Council for International Exchange of Scholars: Fulbright Awards for Research, Lectureships and Travel. Grants available for postdoctoral research, university lecturing and travel in over 100 countries throughout the world. Deadlines, disciplines, and types of grants vary by country. DEADLINE: June 15.

4. National Endowment for the Humanities: Fellowships for University Teachers. Fellowships provide up to \$27,500 for six to 12 months of full-time independent study and research to enhance fellows' capacities as teachers and scholars. Program is intended for individuals affiliated with institutions with extensive Ph.D. programs in the humanities. Both new investigators and those with significant research experience are eligible. DEADLINE: June 1.

5. Pacific Cultural Foundation: Grant Programs for Study on Taiwan. Four types

of grants (research grants, writing grants, publication grants, and seminar grants) are offered to scholars of all nations to further study and understanding on Taiwan. Approximately 35 research grants are awarded annually in the arts, humanities and sciences. The Pacific Cultural Foundation is a nonprofit research and cultural organization facilitating exchange with western nations. DEADLINE: June 10.

6. American Sociological Association: Small Grants for Sociology. Grants of up to \$2,500 each will be awarded to ASA members annually for postdoctoral research on a diverse set of topics that are relevant to sociology as a discipline. Special attention will be given to those projects which are on the "cutting edge" of the discipline or represent innovative activity. Grants may support exploratory study, a small conference, travel to consult with specialists, or study at a major research center. DEADLINE: June 30.

7. National Institutes of Health: FIRST (First Independent Research Support and Transition) Award. Nonrenewable awards provide five years of support (total direct costs of \$350,000 with no single year to exceed \$100,000) for newly independent biomedical investigators to develop their research capabilities and demonstrate the merit of their research ideas. Investigator must commit at least 50 percent of time and may not previously have been principal investigator on any PHS-supported project except a small grant (R03) or a current R-23 award. DEADLINE: June 1.

Bureau of Grants/Sponsored Projects

Please send me information on the following programs: (Circle programs of interest to you.)

1. 2. 3. 4.
5. 6. 7. 8.

Name: _____

Campus Address: _____

4/6/87

WHAT'S NEWS AT RHODE ISLAND COLLEGE

EDITOR

Laurence J. Sasso, Jr.

ASSOCIATE EDITOR

George LaTour

STAFF

Gordon E. Rowley, Photographer
Ellen W. Hunt, Secretary
Alberta Gardiner, Typist

STUDENT STAFF

Christine Albanese, Calendar
Lisa Marie Cashman, Writer
Johanna Bennett, Writer
Lisa Castro, Paste-Up

What's News at Rhode Island College (USPS 681-650) is published weekly throughout the year except during semester breaks by Rhode Island College News and Information Services, 600 Mt. Pleasant Avenue, Providence, R.I. 02908. Second Class postage paid, Providence, R.I.

Postmaster: Send address changes to, What's News at Rhode Island College, News and Information Services, c/o The Bureau, 600 Mt. Pleasant Avenue, Providence, R.I. 02908.

DEADLINE

Deadline for submission of copy and photos is TUESDAY at 4:30 p.m.

TELEPHONE

456-8132

PRODUCTION

Beacon Press

Letters...

March 16, 1987

Dear Larry,

Many thanks for your excellent article on technology education and how it relates to programs in industrial arts education. Mike Barnes, an industrial arts major, developed a technology education activity on the contamination of our drinking water. His planning and research was done with HBS students in cooperation with Dr. Elizabeth Ruggiero, classroom teacher, and Mr. Joseph Tumminelli, industrial arts teacher, both at Henry Barnard School.

Your article has done much to promote the necessity for technology education as we attempt to move this program into our primary and secondary schools. Thanks for such great coverage!

Sincerely,
James G. McCrystal

March 24, 1987

Dear Editors:

Thank you for the article about my students dated 3/23/87. Lisa Cashman, the writer, and Gordon Rowley, the news photographer, were interviewed concerning their respective careers while trying to interview the kids. We successively turned the tables on them.

There was one slight mistake in the article. Suda Prohaska was not a guest. Arlene Violet was. We should invite Suda. Thanks for the idea.

Sincerely
Betty Ruggiero



"Lady, we got the blockage out of your drainpipe, but the next job this size is gonna be time and a half."

Judge and Professor Team Teach Anthropology Course

Rhode Island District Court Judge, Patricia Moore, and Carolyn Fluehr-Lobban, professor of anthropology at Rhode Island College are team teaching a course this semester in the Anthropology-Geography Department entitled "Comparative Family Law".

Judge Moore was a practicing attorney specializing in family law for a number of years before her appointment at the end of 1986 to the Rhode Island District Court.

Fluehr-Lobban has spent a number of years researching questions of family law in the Sudan and Egypt. The two developed the idea for the course when Moore was a guest lecturer in Fluehr-Lobban's course in comparative law and justice—Moore liked the classroom setting and Fluehr-Lobban enjoyed having a practicing legal specialist interact with the students.

The idea of a course in comparative family law came to them when they were discussing the common problems women and their families face when their problems in marriage, divorce or child custody are heard in court, whether that court is in Providence or Newport, Cairo or Khartoum.

Discussions of different cultural styles of family solidarity and cooperation, as well as family instability and breakdown have been a focus of the course.

The course has made some use of outside speakers who are either practitioners or advocates around the family court system of Rhode Island.

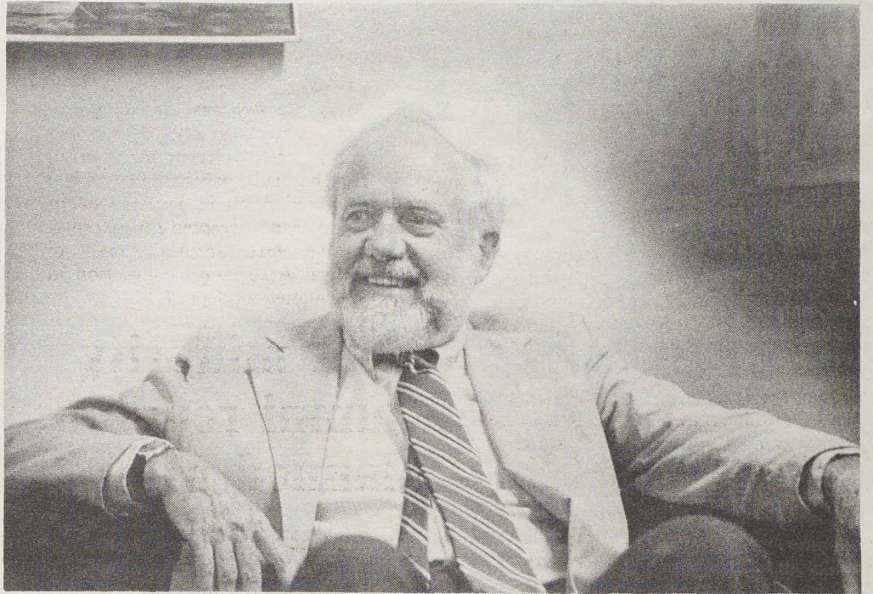
Mary Lisi of the CASA program (Court Appointed Special Advocate) spoke about the growing movement to have children who have suffered abuse in various family situations represented in court by independent citizens who know the child and represent his/her best interests.

Holly Lasko, one of the first graduates of the Rhode Island College Master's of Social Work program in 1981, spoke on behalf of the Rhode Island Mediation Association. Lasko is one of a handful of professional mediators in the state who assist divorcing couples toward making more amicable, workable settlements in matters of child custody and finances that arise from divorce.

She made an impassioned appeal for the increased use of mediation as a way to reduce the costs, both emotional and financial, of divorce in the United States.

Students in this experimental anthropology course come from diverse backgrounds, including several with professional experience or interest in the court system, as well as others with a strong interest in Middle Eastern and Islamic family life.

During one of the final classes, students from Dr. Mary Ann Hawkes graduate seminar in the family will join the class for a special presentation by Court Master John O'Brien who will speak about the issue of child support payments and reforms that have occurred in this area in recent years.



HENRY NASH

U.S.—Soviet information, arms race is focus of history colloquia

Rhode Island College's history department will offer a series of four lunchtime colloquia during April which focus on U.S.—Soviet information and the arms race.

Dr. Henry Nash, the David E. Sweet professor of political science at Rhode Island College, will offer the first presentation on April 8.

Among the topics which will be addressed by the colloquia are such questions as: is information on U.S. or Soviet weapon build-up verifiable or is it propaganda strategy and what are the prospects for a U.S.—Soviet agreement on nuclear weapons.

Also to be discussed are what role the media plays in disseminating accurate information on U.S.—Soviet relations to the American public and what is the overall mission of American nuclear strategy.

At the April 8 colloquium Nash will speak on the topic "America's Cold Warriors and the Nuclear National State."

He will look at the atmosphere and sense of purpose that characterizes the working conditions of the American nuclear strategist and will provide a sense of how

defense strategists think when involved in the process of making life and death decisions.

The speaker on April 15 will be David Layman, newscaster for Channel 6. He will look at the issue of "Propaganda, Censorship and Information and the Role of the American Media." Layman recently returned from a fact-finding visit to the Soviet Union.

On April 22 two delegates from the Soviet Mission to the United Nations will come to the college campus from New York. They will offer a perspective on U.S.—Soviet relations in terms of recent political developments within the Soviet Union.

The series will close on April 29 with Prof. Richard Smoke, Soviet specialist from the Center for Foreign Policy Development at Brown University. Smoke will offer an assessment of present U.S. policy toward the Soviet Union.

All presentations are scheduled to take place from 12 noon to 1 p.m. in room 207 Gaige Hall. All are invited to attend.

For more information call 456-8039.

AMERICA'S ENERGY IS MINDPOWER



HONORS PROGRAM GRADUATES: This year's graduates of the General Education Honors Program at Rhode Island College with college President Carol J. Guardo (seated) are (from left) Susan Garriepy, Jennifer William, Jane Levesque, Karen Ritota,

Anne Labrecque, Eric Emerson, Kathy Testa, Lynelle DiBiasio, Maira Michael, Brian Flannery, Ruls Gasetti, Karl Wallin, Louis Grande and Dawn Gianfrancesco. Site is at the president's house where ceremonies were conducted March 26.

O-K-L-A-H-O-M-A comes to



REHEARSING FAMOUS SONG 'Everything's Up-To-Date in Kansas City' are (from left) Christopher Fratiello, Stacey Ledoux, Stephen Scarpetti and Glenn Soulner.

The corn is as high as a sea to date at Roberts Hall auditorium. The Rhode Island College production of Dr. Raymond Picozzi's staging of America's most dramatic musical, Stephen Sondheim's *Oklahoma*.

Rehearsals are under way; costumes are being created.

The musical accompanists are working hard. Tickets are already scarce and anticipation is building.

In the photos on these pages you can see the preparations for yourself.

Then, plan to witness the show. The production should be magnificent.



WORKING ON COSTUMES for *Oklahoma* are Candy Jennings and Stephen Ciccone.

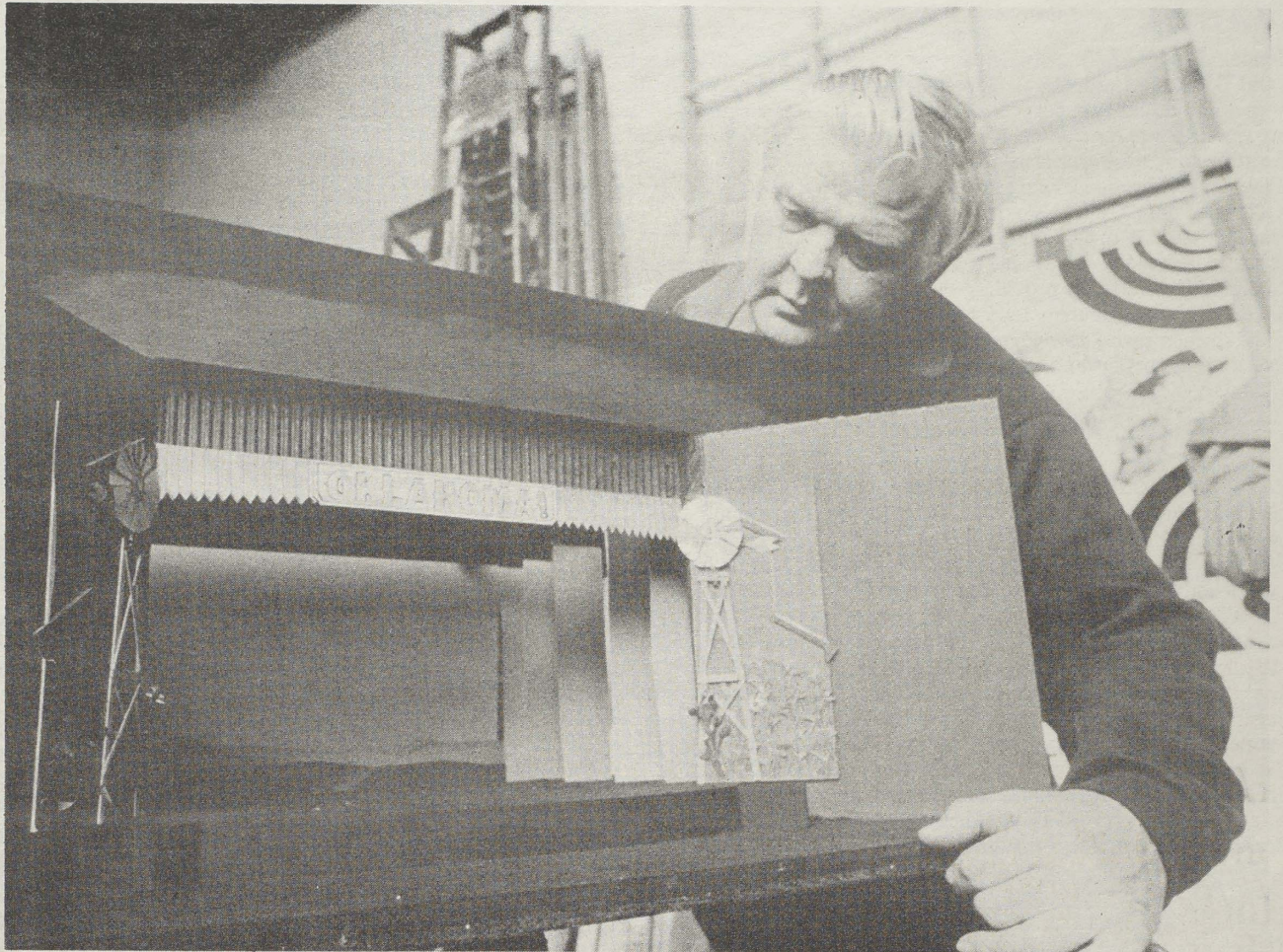


CAST MEMBERS TAKE A BREAK at rehearsal. They are (from left) Lori G. Racinski and Tony Cinelli.

Photos
by
Gordan E. Rowley

Rhode Island C-O-L-L-E-G-E

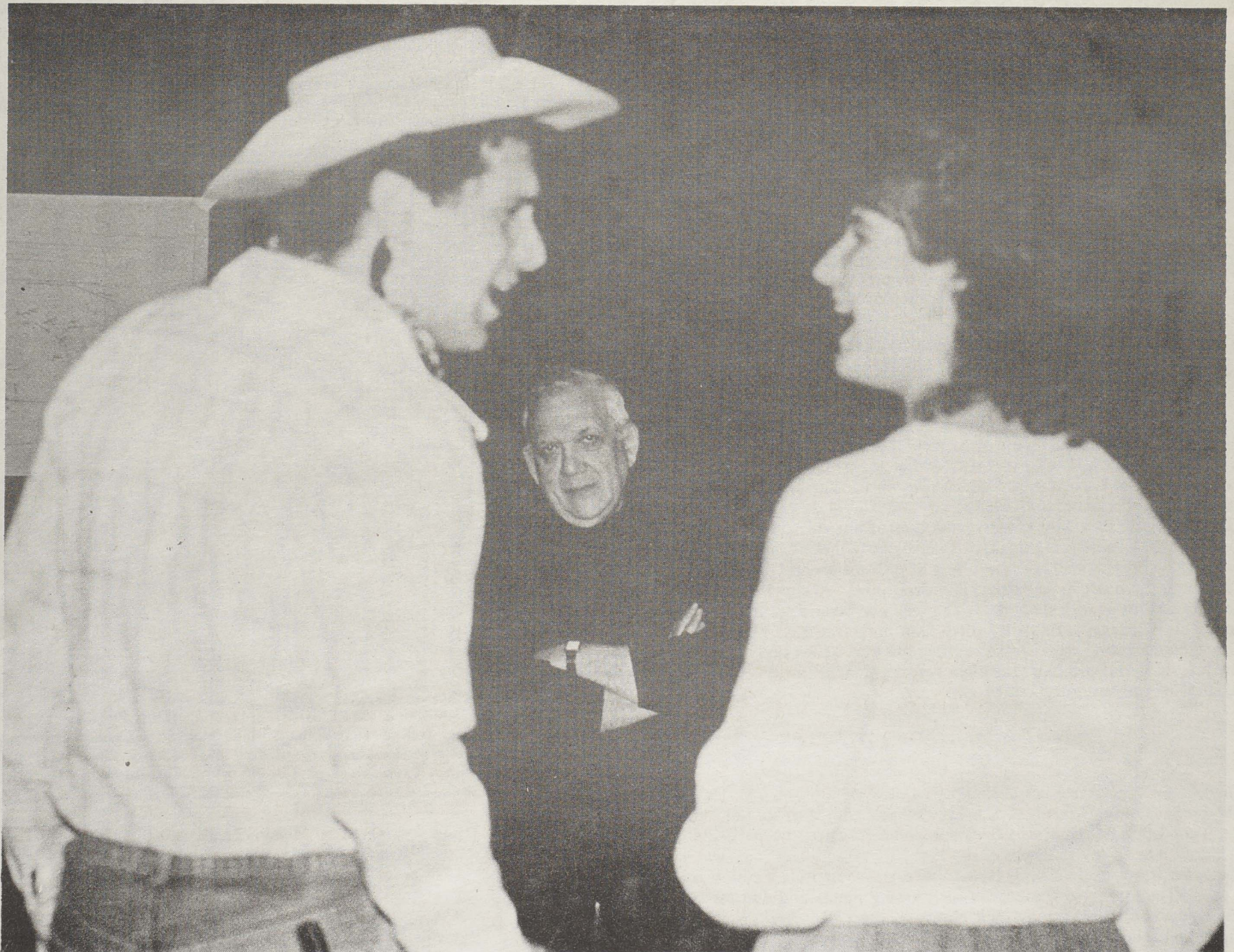
designer's eye and everything's up-
trium.
theatre Company, under the direc-
s getting ready for the April 23-26
able musical, Rodgers and Ham-
n imaginative set is being built,
d.
re working on the famous score.
Ado Annie's will power, and an-
ou can witness some of the prepara-
w itself. The story is a classic, and
orable.



SET DESIGNER Robert Soule with model of the set for Oklahoma.



ier,



WATCHING SCENE FROM OKLAHOMA is Dr. Raymond Picozzi (center). Actors are Tony Cinelli as 'Curley' and Stacey Ledoux as 'Aunt Ella.'



Keeping Score

with Dave Kemmy

Netmen Take The Court

Rhode Island College men's tennis team was scheduled to open its season April 1 against Bryant College on the tennis courts behind Whipple Gym.

The Anchormen are coming off a fine 8-3 campaign of 1986, but have just two of their top six players returning.

Junior Captain Marc Remillard posted a 3-7 singles record and a 5-4 doubles mark as the squad's number four player a year ago. With the loss of the top three players from last year, Remillard figures to be the team's number one player this season.

He had a spectacular freshman season two years ago, posting an 8-2 singles and 7-1-1 doubles mark. He hopes to return to the form he displayed as a freshman during the 1987 season.

The other top player returning is senior Don Levine. He had a 1-2 singles record a year ago and had the top doubles mark on the team with a 4-1 slate. Two other players also return to bolster the team.

Sophomore Jeff Goncalo had a decent first year, finishing with a 1-1 singles record and a 3-3 doubles mark. Another sophomore, Jack Moukhtarian, also saw action last year, posting a 1-2 doubles record.

The netmen also have four new players, with highly touted freshman Robert Carney and Marc Dubois adding a lot of excitement to the team's outlook. The other newcomers are junior Ronald Cross and sophomore Joe Lamoreaux.

The netmen have a tough schedule, with two NCAA Division II opponents and usually tough Division III foes like Plymouth State, Salem State, Bridgewater and Southeastern Mass.

Seventh-year Coach Rusty Carlsten is looking for his fourth consecutive winning season, and his last three teams have posted a 24-8 record in dual-meet action over the past three seasons.

The baseball team won its only game of the week, a 9-4 victory over Framingham State College.

Senior tri-captain Len Silva continued his torrid hitting with a four-to-five game, in-

cluding a triple and three RBI's. Silva is hitting .727 after the first six games and is the top hitter in all of New England. Sophomore Steve Piscopiello also had a good game going three-for-four with a triple and two RBI's. First baseman John Tirocchi added two hits and Keith Vellone added a single and two RBI's.

Junior pitcher Ira Lough pitched one of the finest games of his career, allowing just four earned runs and nine hits, while striking out a career-high five batters.

The squad has a 4-2 record and plays its next home game Thursday, April 9, against Westfield State at 3 p.m.

The Anchorwomen softball team was rained out of its only game last week, but they started this week off on the right foot with a 2-0 win over Clark University.

Senior pitcher Christina Alnas hurled her second complete-game shut-out of the year and allowed just three hits while striking out seven. The victory is the 19th of her Rhode Island College career, leaving her just one short of tying the all-time career wins mark held by former great Paula Pistacchio.

Alnas also had a good game at the plate, knocking in what proved to be the winning run with a single in the bottom of the fifth. Catcher Kathy Pinto had two hits, with her second hit knocking in an insurance run in the sixth inning.

Several other players also played well in the game. Christine Blessing had two hits and Doreen Grasso, Kristen Mariniello and Cara Niederberger all added one apiece.

The squad has a tough doubleheader Saturday, April 4, when it entertains the defending NCAA Division III national champions, Eastern Connecticut. The first game is slated to begin at noon.

The men's track and field squad will be in action at the Fitchburg State Invitational on April 4. It did not compete anywhere last week.

The Women's track and field team was scheduled to entertain Division II Bryant College in a dual meet April 1 and they also were scheduled to travel to Fitchburg for their Invitational April 4.

Scholarships Available

The Rhode Island College Alumni Association will award over 30 scholarships for 1987-88.

Eight categories of scholarships are available to full-time Rhode Island College students. The awards are as follows:

Rhode Island College Alumni Freshman Award: Two \$500 awards given to entering freshmen whose parents or grandparents are alumni;

Rhode Island College Alumni Children Academic Scholarship: Three \$1,000 awards based on academic excellence and awarded to the freshman, sophomore and junior with the highest cumulative index. Parents or grandparents must be alumni;

Andreoli Scholarship (new award for 1987): One year full scholarship (tuition and fees) to a Rhode Island resident who is a full-time student entering the sophomore, junior or senior year. The award requires an essay and a minimum cumulative index of 3.0.

Rhode Island College Alumni and Performing Arts Scholarships: Four \$250 awards in the areas of art, music, theatre and dance to the students who demonstrate talent and promise. The awards require a brief essay and minimum cumulative index of 2.5;

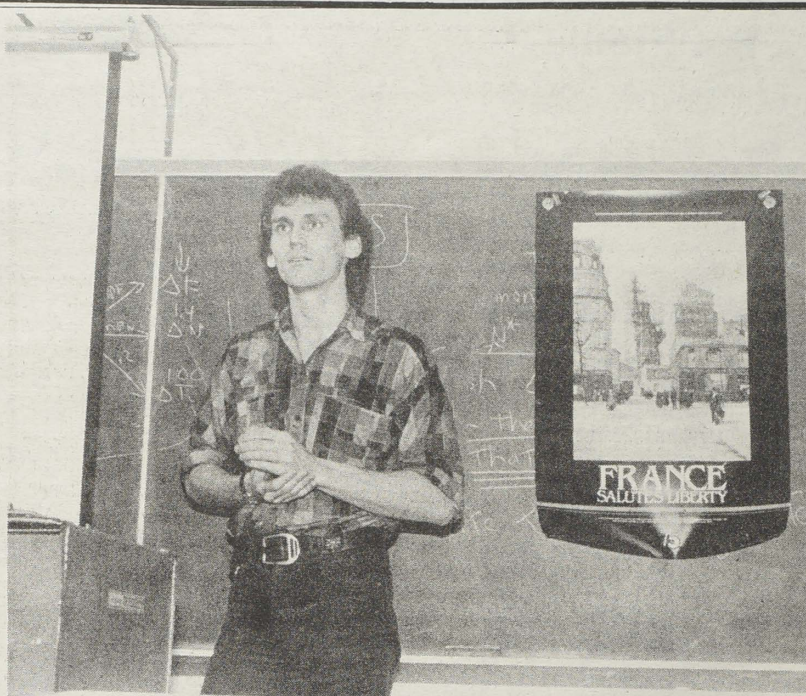
Rhode Island College Alumni Departmental Scholarships: some 16 \$250 awards to be given among the various schools of the college. The awards require an essay and a 2.75 minimum cumulative index;

Rhode Island College Alumni Graduate Scholarship: One \$500 award to a full-time accepted graduate student who has earned his or her bachelor's degree from Rhode Island College;

Rhode Island College Alumni Financial Aid Awards: Eight \$400 awards based on financial need. There is no application for these awards. The financial aid office makes the selection based on need.

Rhode Island College Alumni Westerly Club Scholarship: at least one award to a full-time accepted undergraduate entering the junior or senior year who has financial need. Students must live in one of the towns served by the Westerly Club. There is no application for this award. Selection is made by the Alumni Office with approval of the Club.

The deadline for all scholarships/awards with required application is May 1. Applications are available through the alumni office. Questions about any of the awards may be directed to the office at 456-8086. The Scholarship Committee will act on applications received after spring grades have been posted.



DISCUSSING FRANCE TODAY (in French) with members of L'Alliance Francaise de Rhode Island College is Jean-Luc Dumont of Digne, France. Site is Craig-Lee Hall 152. (What's News Photo by Ann DePedro)

Discusses 'France Today' with L'AFRIC

Jean-Luc Dumont of Digne, France, discussed "France Today" in a three-hour meeting here with members of L'Alliance Francaise de Rhode Island College (L'AFRIC) March 25, reports Jacques Georges, L'Alliance president.

The native of France, who is currently teaching in the Boston area, also discuss-

ed philosophy and literature with members of Prof. Calvin Tillotson's class. Tillotson is advisor to the French club.

Dumont holds a B.A. in French literature/linguistics and an M.A. in American studies/American society from the Universite D'Aix-Marseille in Aix-en-Provence, France.

ORIENTATION '87

12 Student Positions Available student peer counselors

June 29 to July 29

Must be available to work the entire month of July

Must have an overall gradepoint average of 2.0 or better

Must be enrolled in courses this semester and well be enrolled in courses in the September '87 semester

Must have knowledge of Rhode Island College curricula, programs, policies, and procedures

Must have demonstrated ability and/or desire to work with new students

Salary

\$850 new student peer counselor

\$900 returning student peer counselor

\$950 head student peer counselor

(July program only)

Part-time work will be available during the academic year

Application deadline: Friday, April 17 - 12 Noon

8 Faculty Advisor Positions Available

June 29 to July 29

Must be available to work Monday and Thursday 1 hr. a.m. or 1 hr. p.m. and Tuesday and Friday 1-5 p.m.

Must have knowledge of Rhode Island College curricula, programs, policies and procedures

Must have facility and experience in working with students outside the classroom

Must have experience as an academic advisor

Must have experience teaching undergraduates

Salary

\$1,650

(July, August, January Orientation Programs)

Application deadline: Friday, April 17 - 12 Noon
All job descriptions, applications and personnel agreements are available from:

New Student Programs, Craig-Lee 060
Dean of Arts and Sciences, Gaige 153

New Student Programs is an Affirmative Action/Equal Employment Opportunity Employer

What's News DEADLINE

Tuesday 4:30 p.m.

Film Studies Sets Book Sale

The Film Studies Program will be holding its second annual book sale in the Shakespeare Room, Craig-Lee 256 on Wednesday, April 8, from 10 a.m. to 4 p.m.

Books, magazines and records donated by friends of the program will be on sale. Proceeds from the sale will be added to the film studies scholarship fund to support the program's annual scholarship.

Last December, the first scholarship was given to Rachel Hegnauer. The award was presented by Teresa Wright, an Oscar winner who has starred in Hollywood films and television.



EAST GREENWICH HIGH SCHOOL AVENGER BAND

High school band, jazz ensemble to perform

East Greenwich High School Band and jazz ensemble under the direction of Vincent P. Mattera will perform at Rhode Island College's Roberts Recital Hall, Room 138, at 2 p.m. on Wednesday, April 8.

The performance marks the last entry in this season's college chamber music series. The public is invited free of charge.

Calling themselves the "Avenger Band," they and the jazz ensemble regularly perform in concerts, adjudicated festivals and

in competition.

In 1985 the band represented Rhode Island in the presidential inaugural parade. Previously it had performed in the Electric Light Parade in Disney World. Last year it paraded and performed in the Apple Blossom Festival in Virginia.

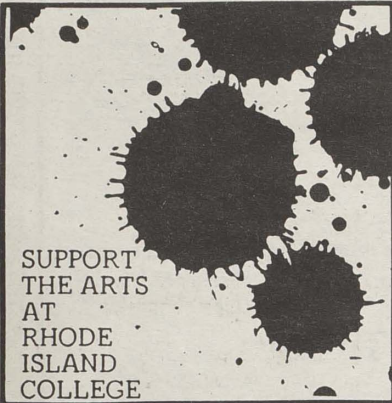
The jazz ensemble has competed in Boston at the Berklee Jazz Festival, taking a first place in 1983 and a second this year.

Mattera has been the director of music

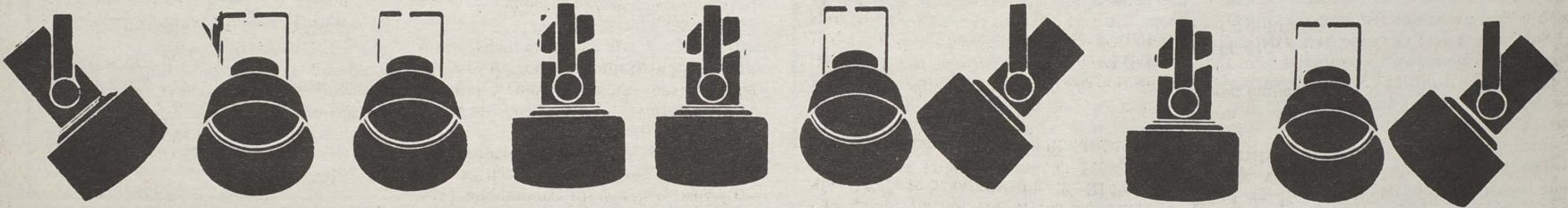
at East Greenwich High School since 1978.

He received a bachelor and master of music degrees from the University of Rhode Island where he had been assistant band director from 1975 until 1978.

For five years each, he served as assistant director of the RIMEA Wind Ensemble and assistant conductor of the Young People's Symphony of Rhode Island. He also directs the Warwick Symphony Orchestra.



SUPPORT
THE ARTS
AT
RHODE
ISLAND
COLLEGE



Calendar of Events

April 6 - April 13

Monday, April 6

Noon to 1 p.m. — *Alcoholics Anonymous* meeting. Student Union 305.

2 to 3 p.m. — *Resume Writing Workshop* to be offered by the Office of Career Services, Craig-Lee 054.

2 to 4 p.m. — *Disability Support Group* to meet. Craig-Lee 127. Everyone welcome. For more information call 456-8061.

Monday-Thursday, April 6-9

Noon — *Mass.* Student Union 304.

Monday-Friday, April 6-10

Jim Coates/Sculpture and Drawings to be on display at Bannister Gallery, Art Center. Gallery hours: Monday-Friday, 11 a.m. to 4 p.m.; Tuesday and Thursday evenings 6 to 9 p.m.

Tuesday, April 7

11 a.m. to noon *Interviewing Skills Workshop* to be offered by the Office of Career Services, Craig-Lee 054.

11:30 a.m. to 1 p.m. *Health Watch Table.* Free blood pressure screening and information on AIDS and personal health available. Donovan Dining Center.

Noon — *Weight Loss Guidance Program meeting.* Registered dietician Kit Gallagher will advise participants. Faculty Center Reading Room. Open to the Rhode Island College campus community. Free. For more information call the Office of Health Promotion at 456-8061.

3 p.m. — *Men's Tennis.* Rhode Island College vs. Nichols College. Home.

Wednesday, April 8

10 a.m. to 4 p.m. — *Book sale* to be held by the Film Studies Program. Books,

magazines and records will be on sale. Proceeds of the sale will be used for the Film Studies Scholarship. Craig-Lee 256.

Noon — *Dr. Theodore Macdonald* of Cultural Survival, Inc. to speak on the future of the native peoples of Central and South America. Gaige 303.

Noon — *Lenten program* titled *My Kind of Church: Finding Your Church Model*, to be offered by the Chaplains Office. Several models of church will be explored. Student Union 305. Brown bag lunches may be brought to the workshop. Open to the Rhode Island College campus community. For further information call 456-8168.

Noon to 1 p.m. *History Department Luncheon Colloquium.* Dr. Henry Nash to present a lecture on "America's Cold Warriors and the Nuclear National Security State." Gaige 207.

12:30 p.m. *AIESEC weekly meeting.* AIESEC is the International Association of Students in Economics and Business Management. Alger 216A.

12:30 p.m. — *American Marketing Association* meeting. Craig-Lee 151.

12:30 p.m. — *Human Resource Management Club* to meet. Craig-Lee 105.

12:30 p.m. — *Mock Interview-Videotaping Workshop* to be offered by the Office of Career Services, Craig-Lee 054.

12:30 to 1:30 p.m. — *Al-anon and Adult Children of Alcoholics* to meet. Craig-Lee 127.

1 to 2 p.m. — *Anchor Christian Fellowship.* Weekly meeting. Student Union 304.

1 to 2 p.m. *Talk on the Myths and Facts About Rape* to be presented by the RI Rape Crisis Center. Horace Mann 192. Free and open to all. Sponsored by the Rhode Island College Women's Center.

2 p.m. — *Chamber Music Series.* East Greenwich High School Avenger Band and Jazz Ensemble to perform. Roberts Recital Hall, Room 138.

3 p.m. — *Men's Baseball.* Rhode Island College vs. U.S. Coast Guard Academy. Away.

3:30 p.m. — *Men's Track and Field.* Rhode Island College at Bryant College with U.S. Coast Guard Academy and Nichols College.

3:30 p.m. — *Women's Softball.* Rhode Island College vs. Roger Williams College. Home.

Thursday, April 9

3 p.m. — *Men's Baseball.* Rhode Island College vs. Westfield State. Home.

Friday, April 10

3:30 p.m. — *Men's Tennis.* Rhode Island College vs. Salem State College. Away.

Saturday, April 11

9 a.m. to noon — *Experiential Workshops* in sound, music and drama to be presented by C.A.P.E.R.S., Counseling and Psychology Education Resource Service. New modes of action oriented expression will be taught. Student Union Ballroom. Reservations required. For further information call the counselor education department at 456-8023.

11 a.m. — *Women's Track and Field.* Rhode Island College at the S.M.U. Invitational.

Noon — *Men's Baseball.* Rhode Island College vs. Southeastern Massachusetts University (DH). Away.

Noon — *Men's Track and Field.* Rhode Island College at the S.M.U. Invitational.

1 p.m. *Men's Tennis.* Rhode Island College vs. Plymouth State College. Away.

1 p.m. — *Women's Softball.* Rhode Island College vs. University of New Haven (DH). Home.

8 p.m. — *Flamenco dancer La Melodia* to perform in "An Evening of Spanish Dance and Music." Guest artists Clio Cavallero and David Mulryne will accompany her on flute and classical guitar. Gaige Hall auditorium. For ticket information call the department of modern languages at 456-8029. Tickets may be purchased in advance or at the door.

Saturday-Sunday, April 11-12

Rhode Island College Rugby Club at the New England College Rugby Tournament. Hope High School, Providence.

Sunday, April 12

10 a.m. — *Sunday Mass.* Student Union 304.

7 p.m. *Sunday Evening Mass.* Browne Hall, upper lounge. **Monday, April 13**
11 a.m. to 4 p.m. — *Jim Coates/Sculpture and Drawings* to be on display at Bannister Gallery, Art Center.

Noon — *Mass.* Student Union 304.

Noon to 1 p.m. — *Alcoholics Anonymous* meeting. Student Union 305.

2 to 4 p.m. — *Disability Support Group* to meet. Craig-Lee 127.