

# WHAT'S NEWS

AT RHODE ISLAND COLLEGE

Vol. 18 Issue 7

Circulation over 42,000

Dec. 8, 1997

## College opens Technology Center at Horace Mann Hall with cutting edge ribbon ceremony

*RIC thanks state for support demonstrated by passage of telecommunications bond issue*

by Shelly Murphy  
What's News Editor

**W**ith a click of the mouse, Rhode Island College President John Nazarian and other dignitaries sliced the virtual ribbon, officially opening the Technology Center at Horace Mann Hall on Nov. 21. The rapid swish of the scissors slicing through the ribbon evoked a cheer from the crowd. The ribbon was projected from a computerized slide presentation to a large viewing screen for the approximately 100 people gathered to mark this major advancement at the College.

The dedication ceremony not only officially opened the Center which propels the College significantly forward in the everchanging information age, but also provided an opportunity for the RIC community to thank everyone in the state who made it possible. The Center, which features over 60 state-of-the-art Dell and Apple computers and a help desk, is the first tangible result of the \$40.6 million Higher Education Telecommunications bond issue passed in November 1996 to upgrade the telecommunications infrastructures, networking and equipment needs at the RIC, URI and CCRI.

"We are indebted to the voters, the General Assembly, the Governor and the Board of Governors for their vision and their commitment to public higher education," Nazarian said. "We are also indebted to our Commissioner, Dr. Stephen Hulbert, for his leadership and advocacy. Last



**VIRTUAL RIBBON CUTTING:** President John Nazarian (at podium) uses a mouse to operate the computer-generated scissors and ribbon to open the new Horace Mann Technology Center on Nov. 21. The center was made possible by the passage of the bond issue last November. (What's News Photo by Gordon E. Rowley)

year's passage of the bond issue was a milestone in public higher education policy, and Dr. Hulbert, together with many others, certainly made sure we got our case out before the voters."

Hulbert and other distinguished guests, including Rep. Paul Sherlock, Board of Governors Jack Keigwin and Michael Ryan, assisted Nazarian in opening the first phase of the Technology Center. Work will begin on the second phase of the Technology Center in the spring with a projected completion date of fall.

The second phase will expand the center to more than 100 computers, add a collaborative technology site, training area, videoconference facil-

ity and laptop connectivity ports. The College has also started planning a second Technology Center to be housed in Whipple Hall on the easterly side of the campus.

The Technology Center has been a welcome addition for students, faculty and staff. The Center has been operating at about 70 percent capacity already this semester even though it hadn't been officially opened or completed. The Center is currently open from 8 a.m. to 11 p.m., Monday through Thursday and from 8 a.m. to 7 p.m. on Fridays. Beginning in the spring semester, it will also be open on weekends.

See Technology Center, page 4



*President's  
Holiday  
Open House  
and Annual  
Tree Lighting*

*Wednesday, Dec. 17  
2:30-6 p.m.  
President's House*

*John Browning,  
professor emeritus  
of history, will  
read " 'Twas  
the Night  
Before Christmas."*

*Come share in the  
joys of the season!*

**Proud to be...  
a part of RJC!**



Ray Anderson was in the Class of 1958, the last class to graduate from the now-demolished Rhode Island College of Education building. And the contrast between his college days and those of a student at RIC today is startling. His "campus job," for instance, was to wash the blackboards each morning. The cafeteria he remembers was so crowded you sometimes had to wait for others to finish their lunches before you could get out of your seat. Then again, the women students often had more in their brownbag lunches than they could eat; so the few men had a "smorgasbord." But perhaps the greatest contrast was between basketball then and now. In the old auditorium/basketball court you couldn't take a shot at the basket from a corner because the balcony hung over the court - a marked difference from RIC's modern, \$8.8 million sports facility of today

## Annual Fund Director gives 'friendly' reminder to complete pledges by Dec. 31

With less than one month to complete the Rhode Island College 1997 Annual Fund campaign, Cheryl Precopio, director of the drive, reminds those who have made a pledge to mail it in by Dec. 31.

"I want to thank all of those alumni and friends of the College who have pledged a donation toward this year's campaign or have already given," Precopio said. "As we move toward finalizing the total, I'd like to remind those who have not yet sent in their tax deductible contribution to do so by Dec. 31. The generosity of our alumni has been exceptional this year. We anticipate a successful 1997 Annual Fund."

Money raised by the Annual Fund drive is used primarily for scholarships. Last year about \$75,000 went to RIC students through direct grants and emergency financial assistance. In addition, money raised goes to support faculty and staff development programs, the alumni magazine and other direct needs of the Office of Alumni Affairs.

Precopio said the installation of the new phon-a-thon facility in the alumni house — thanks to a generous gift from Student Community Government, Inc. last year — has increased the efficiency of the drive.

"The environment of the phon-a-thon facility truly professionalized the fundraising work of our student callers," she said. "Students were able to use their time and talents more effectively and efficiently."

Precopio said there was an increase in the amounts donated from alumni and friends and in the number of major donors this year. She expects to report on the final total sometime in early February in What's News. The Annual Report of Gifts is expected to be published in March.

Donation should be sent to the Annual Fund, Rhode Island College, 600 Mt. Pleasant Ave., Providence, R.I. 02908 by Dec. 31. Visa or Mastercard are accepted. For further information, call the alumni office at 401-456-8086.



# The Way We Were...

This popular item in What's News will continue this year in order for you to be able to revisit your alma mater with a selection of photos from the past — the College's past, whether the current era (Rhode Island College) or past eras (Rhode Island College of Education or Rhode Island State Normal School). We invite your contribution of old photos, along with sufficient information about each such as who's in the photo and what they are doing, the year it was taken and place (if possible). In the meantime, we'll continue searching our files for interesting pictures of past College life.



**DANCING IN THE RAIN:** In April of 1964 the Modern Dance Company of Rhode Island College produced "Rain," based on a story by W. Somerset Maugham. Taking part was Anita (Doucet) Ramsden, Class of 1964, pictured above. (File photo)

The next issue of *What's News* is Monday, Feb. 2

### DEADLINE

for submission of copy, photos, etc., is Friday, Jan. 23 at noon.

*Have a safe and happy holiday season!*

## New face at What's News

Shelly Murphy has joined the news and public relations department on a part-time basis to assist in public relations and event promotion for the College. She will serve as editor of *What's News* while Clare Eckert assumes an additional assignment with responsibility in the creation of a comprehensive student retention program. Eckert will serve as Special Assistant to the President in this capacity and will continue to serve



**SHELLY MURPHY**

as the primary spokesperson for the College and to coordinate the marketing efforts.

Murphy has over a decade of communications experience, including four years at regional, daily newspapers and eight years at non-profit hospitals and health providers.

In her most recent public relations position, she produced publications and managed communications projects at Lifespan, the health system created in 1994 by the merger of Rhode Island and Miriam hospitals.

She has a bachelor's degree in journalism from Radford University in Radford, Va. and a master's degree in business and organizational communications from Emerson College in Boston.

## In Memoriam —

# Prof. Emeritus T. Steven Tegu, 86

"As you are aware, I am a strong advocate of the spoken language and believe that by speaking another man's language, we stand a better chance of becoming his friend and thus contributing to peace," T. Steven Tegu had written to former Rhode Island College President David E. Sweet in 1980 upon the establishment of the Tegu Polyglot Award for students proficient in more than one foreign language.

Then Associate Professor Tegu termed the establishment of the award his "legacy" to the College.

A celebrated professor of romance languages — he was fluent in nine languages not all of which he taught — he also had been an aviator, boxer, swimmer, rock climber, photographer and world traveler.

Professor Emeritus Tegu died Sunday, Nov. 23, after a long illness. He was the husband of Catherine (Brajituli) Tegu with whom he had celebrated their 50th wedding anniversary last summer.

"No one could come in contact with Steve Tegu without feeling his excitement for learning and life," said RIC colleague Dix S. Coons of the modern language department.

"Students in his classes were exposed to much more than just language and culture. They became like Steve, explorers of new horizons.

"Likewise his family. I have always thought how interesting it must have been for his family to explore the world through Steve's eyes.

"Bon voyage, Steve, on your next voyage of exploration," said Coons.

Born July 6, 1911, in Vovusa, a small town in the mountains of northern Greece — a region Tegu described as famous for its rocks, goats and snakes — he came to America 10 years later, joining his father, who had left earlier and established himself as a weaver in New Hampshire.

The family later moved to Vermont where the young Tegu received his early schooling at St. Johnsbury Academy.

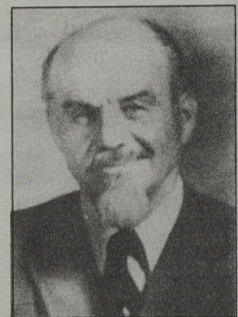
He spent 3 1/2 years at the University of Virginia studying romance languages, then left to pursue flying, an early passion. For two years, he was in a flying circus in Puerto Rico, where he also boxed professionally once or twice — with what he later described as "disastrous results."

Entering the military as a buck private, he served in World War II, and after 10 years in the Air Force, had reached the rank of major. Among his many military duties was work as a translator and flight instructor. During the aviation phase of his life, he logged more than 5,000 hours. He was a pilot

during the Berlin Airlift, flying more than 100 missions.

In the 1950s he studied Greek at Georgetown University; Russian at the U.S. Army Russian Language School; Spanish at the University of Madrid where he worked on a Russian-Spanish dictionary and served as the director of the English language program for the Spanish Army and Air Force, and then earned a masters degree in Spanish from Middlebury College.

In the early 1960s, he earned a doctor of philosophy degree with honors in Spanish literature from the University of Salamanca, Spain.



**T. STEVEN TEGU**  
(File Photo)

He had joined the RIC faculty as an instructor in 1961 and retired 19 years later in 1980 as a full professor.

"You know of what I'm most proud?" he told *What's News* at the time, "My growth

from immigrant to a college professor. Only in America could you do that!"

Subsequently, he was made professor emeritus.

During his tenure at RIC where he taught Spanish, Portuguese and Russian, Professor Tegu became known for his love of languages and dedication to his students.

Among his many academic accomplishment was the establishment of the College's Portuguese program.

He was inducted in the Rhode Island Heritage Hall of Fame; named an Outstanding Educator of America; and recognized by the American Institute for Public Service and the Daughters of the American Revolution for his work with migrant workers, immigrants and other populations. For two years he served as president of the International Institute of Rhode Island.

His photographs have been displayed at the United Nations.

Besides his wife, he is survived by three sons, Alexander and Steven Tegu, both of Providence, and Peter Demitrius of North Providence; two daughters, Janine Tegu of Providence, and Andriana Tegu-Contreras of Warwick; and a grandson, Eli Demitrius Tegu of North Providence.

The funeral was held Nov. 26 from the B. Maceroni & Sons Funeral Home with a service at the First Unitarian Church, Providence. Burial was in Highland Memorial Park, Johnston. G.L.

## WHAT'S NEWS

AT RHODE ISLAND COLLEGE

Editor: Shelly Murphy

Associate Editor: George LaTour

Staff: Pauline McCartney, Word Processing Supervisor; Gordon E. Rowley, Photographer; Cynthia L. Sousa, Writer/ Technical Assistant, Scott Gibbons, Assistant Director of Athletics for Media Relations and Promotions, Edward R. Stahowiak, Student Graphic Designer

**What's News at Rhode Island College** (US681-650) is published biweekly by Rhode Island College Office of News and Public Relations, 600 Mt. Pleasant Ave., Providence, RI 02908. It is published throughout the academic year except during semester breaks. Periodicals postage paid at Providence, RI

**Postmaster:** Send address changes to What's News at Rhode Island College, Office of News and Public Relations, 600 Mt. Pleasant Ave., Providence, RI 02908

**Deadline:** Deadline for submission of copy and photos is noon the Friday two weeks before publication date.

**Telephone/FAX:** (401)456-8090  
FAX 401-456-8887

**Printing:** TCI Press



## Director of R.I. Consortium on Writing — Roemer defends public school education

by George LaTour  
What's News Associate Editor

The director of the Rhode Island Consortium on Writing feels the media has been too quick — again — to jump on the results of yet another test which indicated students weren't performing up to snuff.

Recent state writing test scores of public school fourth graders showed only 13 percent of them met the state standard for good writing.

A noted local columnist chided educators who believed the pupils may have been stumped by the essay question they were asked to write about.

And that was pretty simple: "Write about something you enjoy doing."

"If that's a mind-bender, there is reason to be very very concerned about what schools aren't doing," wrote Bob Kerr of the Providence Journal-Bulletin.

"No question that people are concerned about the children's performance," notes Marjorie Roemer, who also is coordinator of writing at Rhode Island College, "but one test is one test. We don't know why the children did so poorly."

"What teachers are saying," Roemer says, "is we need to field test the prompts (questions). Some prompts don't work very well. All prompts have to be field tested to make sure they actually illicit a range of writing — to tell us who's strong and who's weak. If everyone does poorly, it doesn't tell us that."

Roemer feels that for years now — since the release of the critical "A Nation at Risk" report on our schools — the media has conducted "a relentless campaign to make people scared about public schools."

She quickly adds: "I think we have problems (in the public

schools) and we're facing them."

The Ph.D. associate professor of English says we as a nation will be in trouble if we give up on our public schools.

"If you give up on public schools, you give up on democracy," says Roemer.



MARJORIE ROEMER

"Hysteria and being frightened don't help."

And she adds, "I don't think it's any coincidence that this attack on public education has been paralleled by an increasing disparity of income in this country where the rich have gotten richer and the poor poorer."

"This (the more affluent sending their kids to private or parochial schools) is part of turning our back on the traditional way people have

schools with discipline which she terms "social problems not school problems" but points out that schools are "where they're dealt with."

In other words, the problems we face in our educational system are many and complex and need attention — not hysteria, says Roemer.

"If we don't have respect for schools and teachers, we won't have children who come to school really ready to work and concentrate and be attentive," she says.

### Consortium on Writing

Roemer has been the director of the Rhode Island Consortium on Writing since 1995. An affiliate of the National Writing Project, which began in Berkeley, Calif., in 1974 with the Bay Area Writing Project, it is a nationwide program to improve student writing abilities by improving the teaching and learning of writing in the nation's schools.

It provides professional development for classroom teachers and works to expand their professional roles.

The National Writing Project operates on "a teachers teaching teachers" model, the belief being that teachers are the best teachers of other teachers.

Teachers attend invitational summer institutes at RIC. During the school year these teachers provide workshops and support for other teachers.

A Young Writers Institute in the summer provides training sessions at RIC and in Pawtucket for students in grades 4-6 and 7-9.

The Rhode Island Consortium on Writing, begun in 1985, is the only such project in the state. It began when teachers from Providence, Cranston and North Providence schools joined RIC, Brown University, the University of Rhode Island and the state Department of

See Public Schools, page 4

### "If you give up on public schools, you give up on democracy" — Roemer

improved their lot through public education," says Roemer.

These and many other concerns of educators were covered in two interviews over two day's time. They include the comparison of educating children in an authoritarian state vs. educating children in a democracy, and the discipline problems many teachers face in their classrooms.

Columnist Kerr had referred with admiration to some students in China who were excelling in their mastery of language and other subjects and noted their "long, intense school days."

Roemer feels the education we're trying to give our children in a democratic society is, perhaps, more difficult than it is for an authoritarian society.

She cites "some problems" in our

## Geography Education Alliance donates kits to local schools



ADVENTURE ABOUNDS: Examining the donated materials, are (l to r) Paul Gounaris, director of programs division for Providence School Department; Jeanette Stadelbauer, fourth-grade teacher at Gilbert Stuart Elementary School and teacher consultant for the Alliance; sixth-grader Mario Carrasco, winner of last year's Geography Bee; and Chester Smolski, coordinator of the Alliance. (What's News Photo by Gordon E. Rowley)

Elementary and middle school students in Central Falls, Pawtucket, Providence and Woonsocket will soon be searching for hidden treasures and navigating their way around The Mall at the Capitol in Washington, D.C. thanks to the efforts of the Rhode Island Geography Education Alliance. The students will "travel" to D.C. and uncover treasures through the use of maps, posters, and other materials in Geography Awareness Week packets that the Alliance donated to the schools.

The Alliance, based at Rhode Island College and supported by the National Geographic Society and other funding sources, works to foster greater awareness of geography by providing teaching materials, training and professional development for Rhode Island teachers from kindergarten through grade 12.

The group donated 500 packets to teachers in Providence and 500 packets to teachers in Central Falls, Pawtucket and Woonsocket for the week celebrated nationally in November with the theme, "Explore the World: Geography Takes You Places."



What's  
News

### Dialogue on Diversity

David Thomas, professor of history, who is beginning a sabbatical next semester, has turned over the reins of the Dialogue on Diversity Committee to three successors: Joe Costa, director of student support services; Armritjit Singh, professor of English; and Carol Shelton, associate professor of nursing. The three individuals will function as an executive committee.

The leadership changes were announced at the committee meeting on Nov. 14. The committee of three was formed, Singh said, "because we needed three people to fill David's shoes. We are very grateful for the work he has done in the past two years. We have had a great response to our programs and we need to keep up the momentum that he has started."

The committee also further defined its purpose and began plans for its next program, slated for late March or early April.

A standing committee will be created consisting of about 12 core members who can attend all meetings and play an integral role in helping the group fulfill its mission. If you are interested in serving on this standing committee, call Costa at 456-8237. President John Nazarian will appoint the members from the list of submitted names.

However, participation is not limited to the standing committee. The meetings will be open to any interested parties and suggestions are always welcome, Costa said.

The next meeting of the Dialogue on Diversity Committee will be Friday, Dec. 12 at noon in the President's Dining Room of the DDC.

### Holiday helpers

Even though many state and local agencies are experiencing below-average holiday donations this year, Rhode Island College is doing its part to help out. The following are some of the organized campaigns that are under way:

A Coat Drive sponsored by the Sociology and Justice Studies Club to benefit the Clothing and Food Bank of RI. Old or new coat donations will be accepted until Dec. 12. and can be dropped off from 8:30 a.m. - 4 p.m. on the fourth floor Craig Lee.

A Food/Toys/Clothing Drive sponsored by the Class of 2000. Donations accepted until Dec. 12. Drop them off in SU 200.

The Children's Giving Tree Annual Holiday Dinner in Donovan Dining Center. Dec. 11 at 4 p.m. An ornament making party to support Hasbro's Children's Giving Tree. College community is invited. Dinner \$10.

A Toy Drive sponsored by the Women's Center and the RIC Wrestling team. Donations of new toys (no guns) can be dropped off at the Women's Center in the lower level of Donovan Dining Center until Dec. 12. Toys will be distributed to local community youth shelters.



## Emeriti professors and RIC alumnus inducted into Science Teachers Hall of Fame

Two emeriti professors at Rhode Island College, one from the biology department and the other a teacher at Henry Barnard School, have been inducted into the Rhode Island Science Teachers Association Science Teachers Hall of Fame.

George C. Hartmann of Greenville, a professor emeritus of biology who taught at the College for 32 years, and Ruth B. Whipple of North Providence, an assistant professor emerita of science at Barnard where she taught for 29 years, were honored Nov. 15 at RIC which hosted the annual teachers association conference. About 150 teachers from all levels from elementary through college attended.

Also inducted was Robert DelGuidice, RIC Class of 1962, a science teacher in the Warwick schools for 28 years until his retirement.

The honor recognizes outstanding science teachers who have served Rhode Island students for many years.

The purpose of the conference is for teachers to be able to share innovative ideas for more effective teaching. Numerous commercial and non-profit organizations had exhibits demonstrating their products and programs.

A number of RIC faculty made



**SCIENCE TEACHERS HALL OF FAME:** Recently inducted into the Rhode Island Science Teachers Association (RISTA) Hall of Fame were Prof. Emeritus George Hartmann; Assistant Prof. Emerita Ruth Whipple, and Robert DelGuidice, RIC Class of 1962. Above (l to r) are Joyce Heist of Henry Barnard School (who presented Whipple for induction), Whipple, Hartmann and Judith Sweeney, president of RISTA, who presented Hartmann. (Robert DelGuidice was not present). (What's News Photo by Gordon E. Rowley)

presentations at the conference, including Barry Gilbert, Charles Marzocco, John Williams, Paul Tiskus, Elaine and James Magyar from the Department of Physical

Science; Greg Kniseley from the Department of Elementary Education, and Joyce Heist, Clare Vadeboncoeur, Pam Manninen and Raquel Shapiro from Henry Barnard.

## Education Management Collaborative moving to RIC

A consortium of state educational organizations has leased space on the Rhode Island Campus and will move in when renovations are complete. The interior renovations began in mid-November and are projected to be complete by the end of February.

The Education Management Collaborative consists of five organizations: the Interscholastic League, the Rhode Island Association of School Committees, Rhode Island Association of School Principals, Rhode Island Association of School Administrators and the Rhode Island Interscholastic Association of Athletic Administrators. The Collaborative approached the College several months ago about the possibility of locating to the Rhode Island College campus.

The consortium will lease Building

#6 for 10 years with an option for a 10-year renewal. Building #6 is located on the east side of the campus and previously housed offices for the Department of Children, Youth and Families. These offices have been consolidated into space in other facilities used by DCYF on the campus.

In addition to annual lease payments, the consortium donated \$200,000 to the RIC Foundation earmarked for the renovation of the building. As a result of this contribution, the College became eligible for \$66,000 in matching funds from the state to help with the renovations.

The Education Management Collaborative will complement Rhode Island College's mission of teacher education. "We already interact with each of these individual organizations now and we are pleased to have them moving to our campus as a collaborative," said

Lenore DeLucia, vice president for administration and finance. "Their proximity will give our students work and internship opportunities as well as easy access to attend meetings, lectures and seminars that the members of the collaborative will sponsor."

Dick Lynch, executive director of the Rhode Island Interscholastic League and spokesman for the Collaborative, said it was a natural for the Collaborative to move to the Rhode Island College campus because RIC is one of the leading colleges in the preparation of teachers. "The five organizations in the Collaborative are all about education and the youngsters we deal with will be going on to college, many of them to Rhode Island College. We look forward to the opportunity to have Rhode Island College students intern in our offices and participate in seminars."

## Public Schools

Continued from page 3

Education to form the consortium.

"Literacy is at the foundation of school and workplace success, of citizenship in a democracy, and of learning in all disciplines," says Roemer.

"In addition, technology has heightened the need for students to write and think clearly and coherently," says Roemer.

Peter McWalters, state commissioner of elementary and secondary education, notes that the Consortium staff has trained over 200 Rhode Island teachers.

"The results of training have been impressive and the teachers involved in the project have become trainers in their own school districts and across the state," observes McWalters.

Roemer has been coordinator of writing at RIC since 1993 and, as such, was a key player in the College's development of writing standards across the curriculum.

A task force was established in 1994 to address what the standards should be. In 1996, the Curriculum Committee received the "Report of the Rhode Island College Task Force on Writing Competency," chaired by Margaret Waller. Its recommendations were implemented this year.

Among the recommendations were that a writing requirement include writing 100 (or its equivalent), writing intensive work in the General Education sequence, and a designated writing intensive course within each major or program.

It also recommended that a Writing Board be established to coordinate writing across the curriculum and that board, now established, already has had its first meeting.

Roemer graduated from Bennington College in Vermont with a bachelors degree; has a masters from New York University, and her Ph.D. from Brandeis.

Her teaching assignments have run the gamut from classroom teacher in the New York City Public Schools to part-time lecturer on education at Harvard University.

She is married to Dr. Donald Roemer. The couple, residing in Franklin, Mass., has two grown children, David and Lizabeth, and one 15-month-old grandson.

## Technology Center

Continued from page 1

"The Technology Center has already become a major asset for our students, faculty and staff. The successful opening of the Center is a real tribute to the teamwork and commitment of the many people on campus who played a key role in the planning and implementation of the project. I appreciate the continual support of the College leadership in making this happen. I also want to commend the hard work and persistence of all of my staff and everyone in the purchasing department who had the tremendous challenge of identifying and working with vendors to meet all our needs," said David Beason, director of the Computer Center.

The equipment in the Technology Center is only part of the story. Much of the new technology is hidden from view — in the thousands of yards of cabling in underground conduits and wiring the ceilings and walls of our buildings — almost like a nervous

system that provides information by transmitting impulses from one place to another. The work to meet the technology needs and position the College for future needs has just begun.

Over the next four years, funds from the bond issue will be used for improvements including a digital voice system to meet higher call volume and modem demands and to provide voice mail; a cable network to meet the voice, data and networking needs of the College for the next 15 years; and a video system to link RIC with similar facilities within the state and nationally for videoconferencing and instructional purposes.

"These investments are really investments in the state's future prosperity," Nazarian said. "About two-thirds of our 44,000 living alumni still live or work in Rhode Island. Their education pays dividends each and every day for the state's economy."

## Feinstein shares his views



**"ENRICHING AMERICA"** was the topic when philanthropist Alan Shawn Feinstein addressed students and faculty in the Feinstein School of Education and Human Development, on Nov. 19 in Clark Science 125. Feinstein shared his views on community service at his first annual address. Feinstein, whose \$1 million gift to RIC last year was the single largest contribution ever received by the College, is the founder of the Feinstein Enriching America Program. Community service has been incorporated into the teacher education curriculum. (What's News Photo by Gordon E. Rowley)



# — Service Recognition Days —

In order to recognize the commitment and dedicated service of its faculty and staff, Rhode Island College established a Service Recognition Day. On this tenth Service Recognition Day, held Dec. 3, those who have served the College for 10, 15, 20 or 25 years were recognized at a reception at the President's House.

The 30-Year Honor Roll recognizes faculty, administrative staff, and support staff who have completed 30 years of service to Rhode Island College. The Honor roll is permanently displayed in the President's Office reception area in Roberts Hall. Honor Roll members attended a reception Dec. 4 at the President's House.

*Rhode Island College values and appreciates the members of its faculty and staff whose loyalty and dedication have contributed meaningfully to the College's growth and success over the years.*

## 25-YEAR SERVICE AWARDS

### Faculty

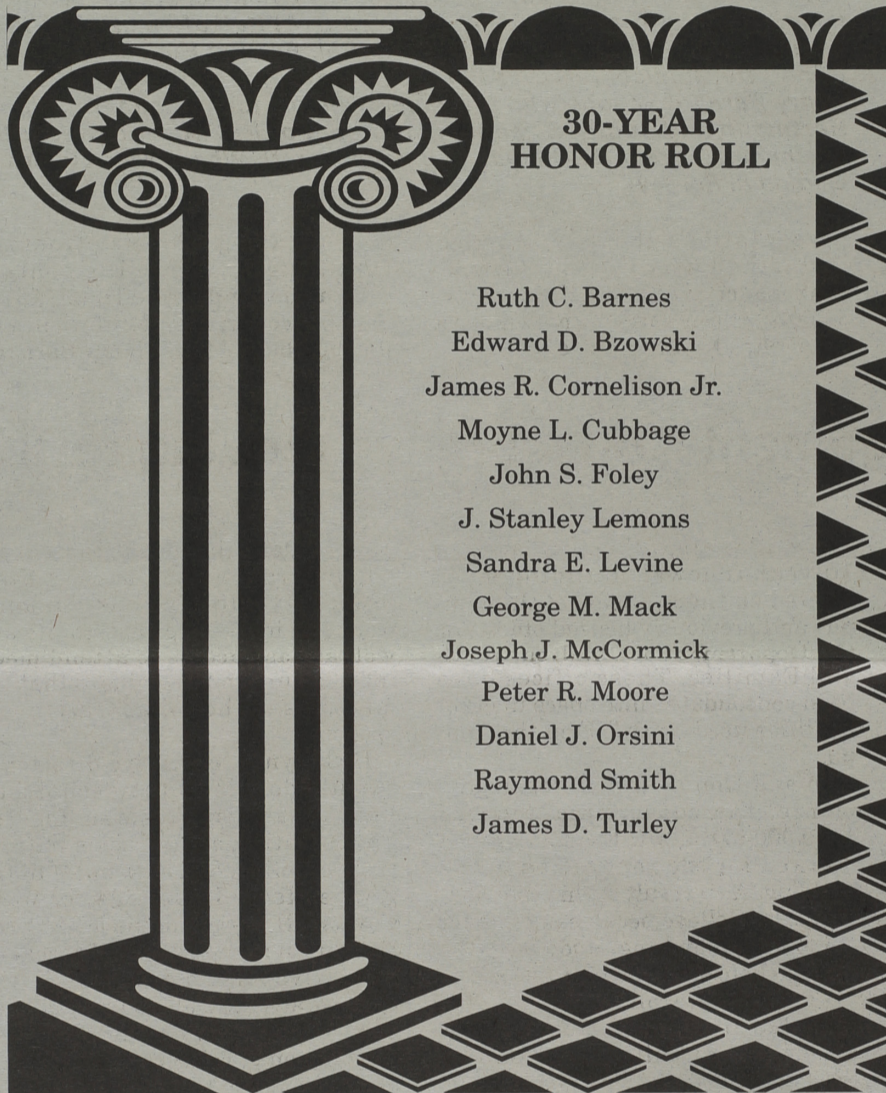
Peter S. Allen  
 Crist H. Costa  
 Carolyn Fluehr-Lobban  
 David L. Greene  
 Spencer Hall  
 Krisjohn O. Horvat  
 Kenneth P. Kinsey  
 John J. Laffey  
 Curtis K. LaFollette  
 Richard A. Lobban, Jr.  
 Patricia A. Lyons  
 James P. McGuire  
 Judith N. Mitchell  
 Nancy Oppenlander  
 Joyce T. Reisner  
 Elizabeth A. Ruggiero  
 James T. Sedlock  
 Ellsworth A. Starring  
 Ezra L. Stieglitz  
 Milburn J. Stone  
 M. Frances Taylor  
 John C. Williams, Jr.

### Administrative Staff

Joseph W. Konicki  
 Roger Lima, Sr.  
 William E. Swigart

### Support Staff

Adrien J. Blanchette  
 Norma J. Briere  
 Edward V. Cull, Jr.  
 Dennis H. Dichiaro  
 Ann T. Ferranti



## 30-YEAR HONOR ROLL

Ruth C. Barnes  
 Edward D. Bzowski  
 James R. Cornelison Jr.  
 Moyne L. Cabbage  
 John S. Foley  
 J. Stanley Lemons  
 Sandra E. Levine  
 George M. Mack  
 Joseph J. McCormick  
 Peter R. Moore  
 Daniel J. Orsini  
 Raymond Smith  
 James D. Turley

## 10-YEAR SERVICE AWARDS

### Faculty

Dorothy M. Bianco  
 Thomas L. Cobb  
 I. Atilla Dicle  
 Ulku Dicle  
 Richard Feldstein  
 Rachel Filinson  
 Alema Karim  
 Thomas E. Malloy  
 Maureen T. Reddy  
 Barbara A. Schapiro  
 Carolyn L. Wood

### Administrative Staff

Anthony O. Carlino  
 Jane L. Lindberg  
 Debra A. Thomson

### Support Staff

Barbara A. Blackwell  
 John E. Bucci  
 James A. Connors  
 Thomas D'Amore  
 Robert K. Fish  
 Alberta Gardiner  
 Domenic Giusti, Jr.  
 Cheryl A. Heap  
 John B. Mancini, Jr.  
 Joan E. McHugh  
 Kim Ramos  
 Arthur C. Richard  
 Edward N. Rotondo  
 Michelina Santos  
 Patricia A. Schneider  
 Diane A. Smith

## 20-YEAR SERVICE AWARDS

### Faculty

Louise J. Buonomano  
 William M. Jones  
 Robin K. Montvilo  
 Carol R. Shelton  
 Marilyn S. Sylvestre

### Administrative Staff

Kenneth C. Coulbourn  
 Gail H. Davis  
 Gary M. Penfield  
 Gordon E. Rowley  
 Support Staff  
 Raymond J. Brown  
 Leon W. Collins  
 Stephen M. DeStefano  
 Gladys Dimeglio  
 Pamela A. Goralnik  
 Phyllis Hunt  
 Carlton A. Lima  
 Joseph M. Mallozzi  
 James J. Richardson  
 Ann M. Varatta

## 15-YEAR SERVICE AWARDS

### Faculty

Willard F. Enteman  
 David M. Harris  
 Lloyd H. Matsumoto  
 Lenore J. Olsen  
 Willis E. Poole

### Administrative Staff

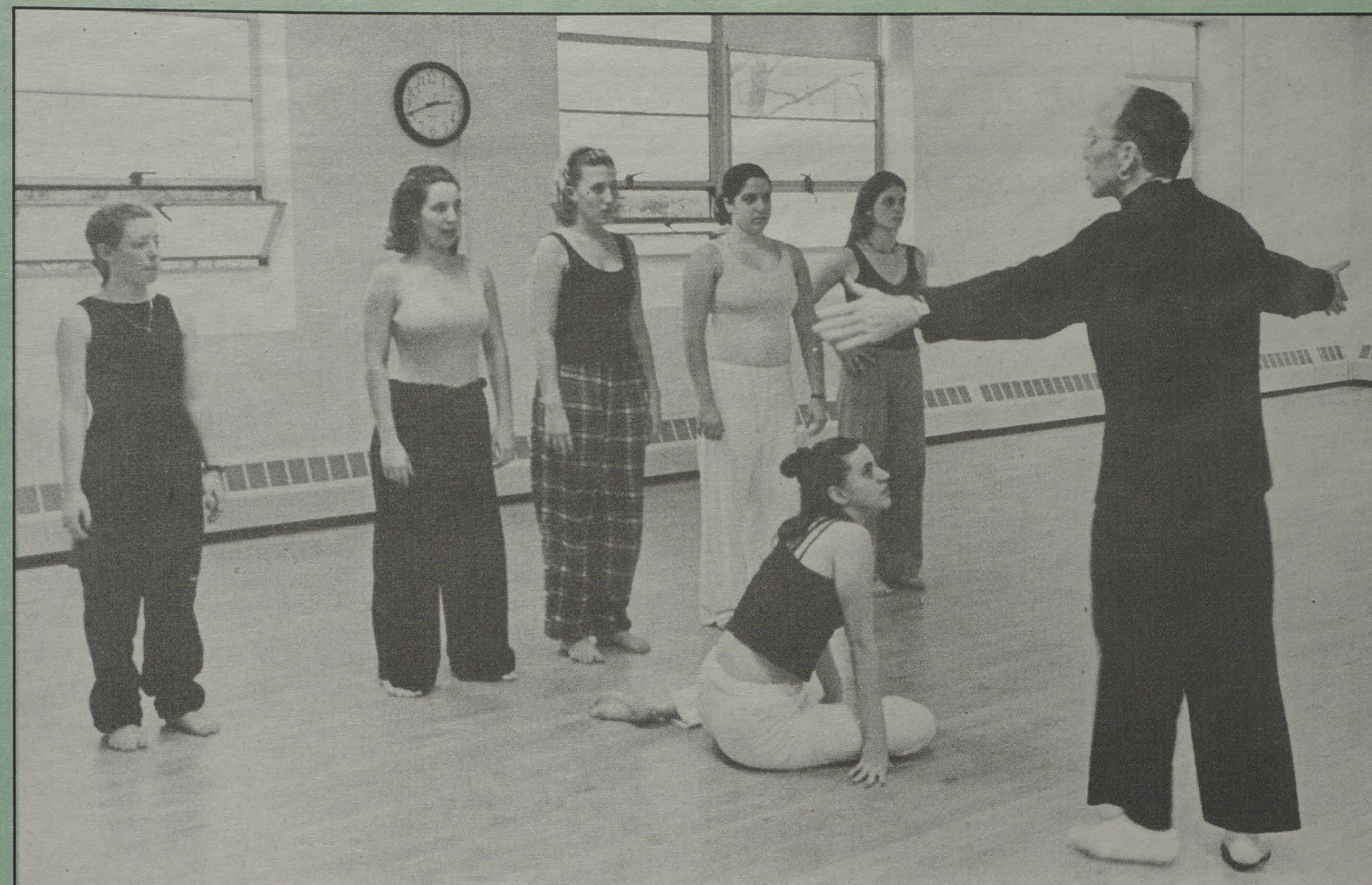
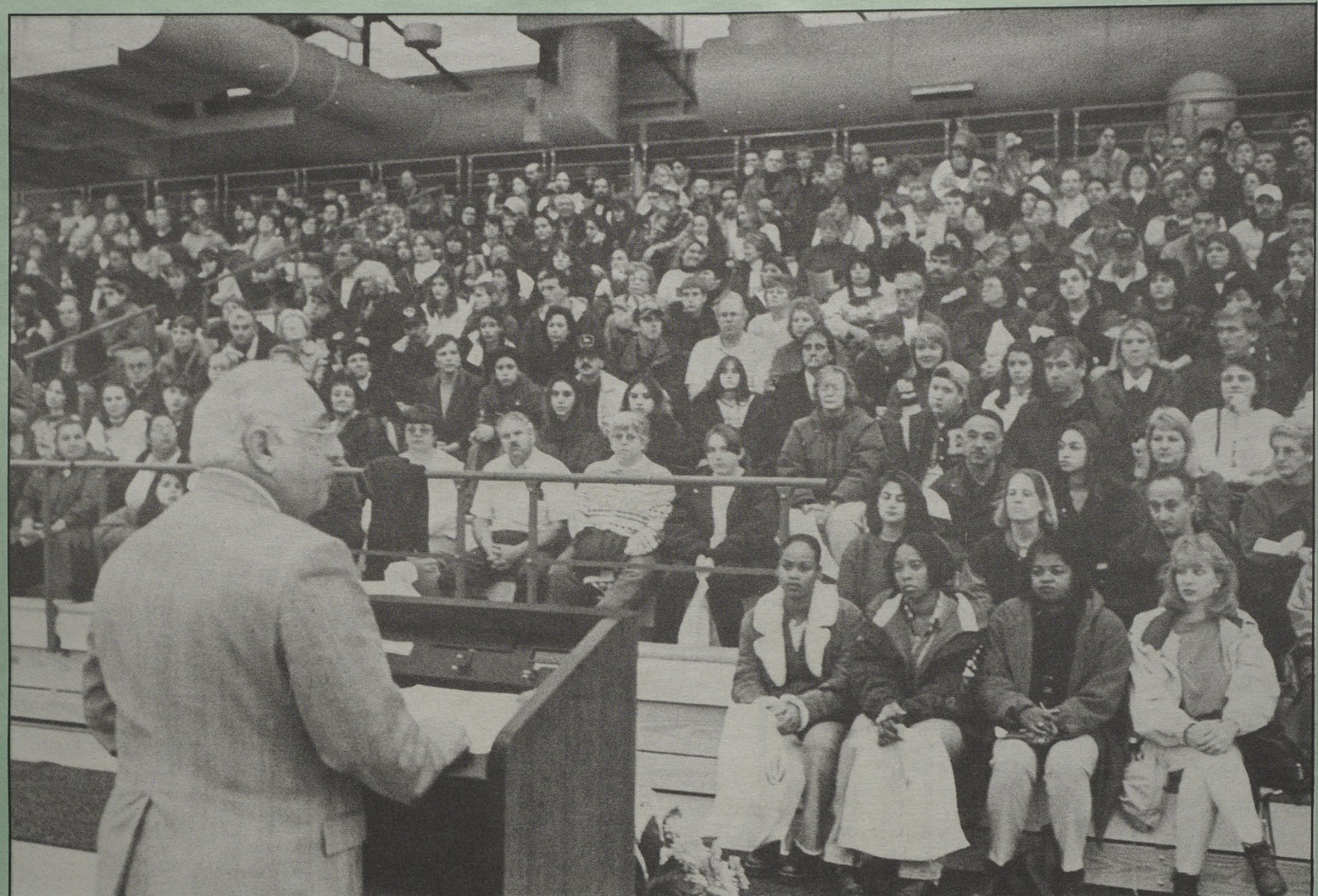
Georgia L. Bonaminio  
 John J. Fitta  
 Thomas J. Lavin  
 Dennis M. O'Malley  
 Wayne E. Turner

### Support Staff

Kenneth P. Carcieri  
 Elaine A. Coccoli  
 Dorothea S. Silvestre  
 Margaret F. Theroux  
 Charles H. Voyer



# Creative touches draw more than 1,500 to Admissions Open House



More than 1,500 prospective students and their parents attended the Admissions Office's annual "Open House" of Nov. 22. And by all accounts it was an unqualified success, much of it due to the innovative features that were added this year. The main venue, for example, was the New Building rather than Donovan Dining Center. With the bleachers unfolded and canvas covering the polished floor, there was plenty of room for President John Nazarian to address the crowd, and later, for high school students and their families to meet faculty members at departmental tables. Departments and student organizations went all out to decorate their tables and enhance their presentations with visuals.

Visitors were encouraged to participate in activities and events by the distribution of raffle tickets. Each time they talked to a faculty member — or the president, each time they took a tour or attended a presentation they were given a ticket, which made them eligible for prizes ranging from teddy bears and sweat-shirts to a RIC director's chair.

Another innovation was special interest tours, for those interested in: fine and performing arts, technology, the sciences, teacher education, and athletics.

Also new this year was campus-wide transportation in the form of two "street car trolleys" that took visitors from one end of the campus to the other.

Finally, most people ended the afternoon in Donovan Dining Center, where they sampled light refreshments and listened to the sounds of the RIC Jazz Trio.



*Clockwise from upper left: President John Nazarian addresses a capacity crowd in the New Building; guest choreographer Peter Schmitz conducts a workshop in the Recreation Center; Amy Spencer, a senior at Warwick Veterans Memorial High School fills out a raffle ticket; visitors board one of two trolleys that aided in campus tours; the RIC Jazz Trio, with (l to r) Bob Lewis, Chris Mink, and Joe Davis, entertains visitors in Donovan Dining Center; Assistant Prof. Daniel Scott talks about African-American studies with Al Gaye, a senior at LaSalle Academy; and President Nazarian (right) talks with Bill Harvey, who brought four prospective students including his son, Kevin, to the open house from Port Jefferson, Long Island.*

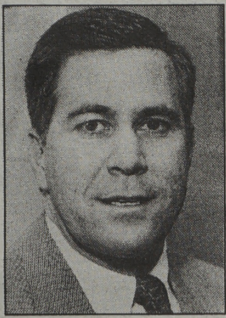


**Photos and text by  
Gordon E. Rowley**





# RIC Athletics



**DONALD E. TENCHER**

*director of intercollegiate athletics, intramurals and recreation*  
456-8007

## Calling all RIC Hall of Famers

The wrinkles are finally being worked out of the new building and the time has come to rededicate the Rhode Island College Athletic Hall of Fame. The plan calls for a ceremony in late spring in which the previous inductees will be honored with an unveiling of a new commemorative plaque in the upper foyer of the new athletic facility. Additionally, a committee is now

being formed to select a new class of inductees that will be enshrined at a banquet to be held in conjunction with RIC Homecoming 1998 in October.

It is imperative that we get a head and shoulder shot (preferably close-up, black and white) of each of our previous inductees by the middle of January. If you are a prior inductee (listed below) or related to a prior

inductee we need you to contact the Department of Athletics with your current address. If you don't have a photograph, our public relations department would be happy to arrange to take one. The telephone number for athletics is (401) 456-8007 and public relations is (401) 456-8090. When contacting the public relations department please ask for Shelly Murphy.

Anthony Agatiello  
Linda Aitken  
Joann Avedisian  
Arthur Bently  
Roland Blais  
Edward Bogda  
Roland Blais  
Robert Brown  
Russ Carlsten  
Tim Clouse  
Vincent Cullen  
G. Gail Davis  
Cynthia DiSano  
James Donaldson

Richard Dugay  
Ray Dwyer  
Ronald Felber  
John Foley  
Ronald Gillooly  
Ray Huelbig  
Jacqueline Hultquist  
Tom Kenwood  
Dorothy Kleniewski  
Thomas Lavery  
Patricia Moore  
Raymond Nelson  
Maureen O'Donnell  
Daniel O'Grady

Ernest Overbey  
Dr. Patrucco  
Raymond Pepin  
Domenico Petrarca  
Phil Pincince  
George Poli  
Art Pontarelli  
Richard Rouleau  
Thomas Sheehan  
James Soares  
Dave Stenhouse  
Michael VanLeeston  
Judith Weremay  
Rick Wilson

## RIC 'seniors' score at tennis tournament

Four of the eight players on a victorious senior men's tennis team from Cranston have ties to Rhode Island College. The team won the New England United States Tennis Association 3.5 Senior Championship (ages 50 and older) in September. With the victory came the right to represent New England in the national championships held in Orlando, Fla. in October.

The four with ties to RIC are Richard Keogh, director of research and grants administration; Ed Blamires, a graduate of the Class of 1962; George Fleming, a graduate of the Class of 1960; and Bill Girard, a graduate of the Class of 1970.

Cranston was bracketed in the 17-team tournament with New York, Hawaii, Florida and Virginia. The team finished with a 3-1 record tied with Hawaii and New York. A procedure based upon individual matches won was implemented to break the tie and Hawaii proceeded to the "final four." They were later defeated by the national championship team from Louisiana.

At the nationals, Blamires' overall record was 3-0, Fleming's 3-0, Girard's 1-2, and Keogh's 1-1.

Blamires and Fleming were members of the first freshman class to enter RIC's new Mt. Pleasant campus in the fall of 1958. In the spring of 1959, they convinced coach Bob Brown to enter a team in the New England State College Athletic Conference (NESCAC). Since that time RIC has continuously fielded a varsity tennis team. In 1962, Fleming was undefeated at number one singles in the NESCAC.

After the passing of Brown in 1966, athletic director Bill Baird, hired Fleming to coach the men's varsity team. In 1970 Girard played for Fleming at number four singles on the first undefeated (10-0) tennis at the College.

Fleming, Blamires and Keogh have played social tennis together for several years. When they were approached to join the Cranston team, they jumped at the chance to play competitively again.

Girard is the women's tennis coach at St. Raphael Academy. His undefeated team won the Class C state championship this fall.

Fleming retired from coaching at RIC in 1980 with an 84-65 record and a NESCAC championship in 1974 along with an undefeated season in 1970.

Rounding out the College contingent attending the national championships were Class of 1962 alumnae Joan Ziochouski, Fleming's wife; and Constance Lavallee, Keogh's wife.

*Contributed by George Fleming*



**CHAMPS:** RIC-affiliated tennis players from left to right are Ed Blamires, Bill Girard, George Fleming and Richard Keogh.

## Sports Roundup

### Women's Basketball

RIC opened the 1997-98 season with an 87-63 win over Johnson and Wales University on Nov. 22. Sarah Kelly led the team with 14 points, two assists and two steals in the win. MeLeah Hall, a transfer from Bryant College, had 12 points and six steals for the Anchorwomen.

### Men's Basketball

The Anchormen defeated Johnson and Wales 116-94 in their season-opener on Nov. 24. Kenny Bliss had the hot hand for the Anchormen, scoring 31 points in the win. James Thomas notched a double-double in the win, scoring 12 points and pulling down a team-high 14 rebounds.

### Wrestling

The wrestling team began the season at the Roger Williams Invitational on Nov. 15. Brian McCormick finished in second place in the 142 pound weight class. Jason Cornicelli placed second in the 150 pound weight class. The team traveled to the Springfield College Invitational on Nov. 22 and finished in 14th place.

### Men's and Women's Cross Country

Both the men's and women's cross country teams took part in the ECAC Championships held at the University of Massachusetts-Dartmouth on Nov. 8. Laurie Giguere was the women's top finisher with a time of 22:29 in the 5,000 meters. Jason Blouin was the men's top performer with a time of 28:45 in the 8,000 meters.

#### Varsity Athletic Results Nov. 5 -26

##### Men's Basketball

11/24 at Johnson and Wales  
W 116-94

##### Women's Basketball

11/22 at Johnson and Wales  
W 87-63

##### Wrestling

11/15 at Roger Williams Invit.  
Qualifier

11/22 at Springfield College Invit.-  
14th

##### Men's & Women's Cross Country

11/08 ECAC Champ. held at  
UMass-Dartmouth



## Ballet du Capitole de Toulouse presents all-Balanchine program Jan. 24 as part of the Performing Arts Series

by George LaTour  
What's News Associate Editor

Considered one of the five best French companies today, the Ballet du Capitole de Toulouse will bring its all-Balanchine program to Rhode Island College's Performing Arts Series Saturday, Jan. 24, for an 8 p.m. performance in Roberts Hall auditorium.

Originally created to provide ballet suites as interludes or divertissements of 19th century operas and operettas, Ballet du Capitole de Toulouse has over the years gained a reputation for dynamism and quality.

While maintaining its connection to the opera and to classical ballet, the company has established itself as a forum for all styles of choreography.

Since 1994, Nicolas Joel, artistic director of the Theatre du Capitole, has entrusted the direction of the company to Nanette Glushak with the aim and desire of seeing the Ballet du Capitole expand its repertoire to include all major 20th century choreographers.

Glushak had danced in 1978 with Mikhail Baryshnikov in his debut in the title role of Balanchine's *Apollo* at the Chicago International Festival. In the same year, she appeared with members of the American Ballet Theatre in the movie *The Turning Point*, starring Shirley Maclaine and Baryshnikov.

Now a resident of France, Glushak has been guest teaching and staging the Balanchine and classical reper-

toire for many European companies.

The Ballet du Capitole de Toulouse, under Glushak's direction, recently has undertaken much of the George Balanchine repertoire.

The program at RIC will consist of *Rubies* with music by Igor Stravinsky, *Prodigal Son* with music by Sergei Prokofiev and *Raymonda Variations* with music by Alexander Glazunov, all choreographed by Balanchine.

In addition to these and other productions, the company is looking to develop an outreach program for its activities to assist in a broader dissemination of dance both in France and abroad.

Thus, the company is regularly presented in numerous French cities. As ballet company, it represents a cultural calling card for these cities and is more easily exported than an orchestra or an opera production with the result that it has undertaken numerous worldwide tours, including such sites as Chongqing, China, the Ukraine, Portugal and London, England.

"It has been a long time since we have had the pleasure of seeing a ballet company presented so intelligently and tastefully," said *Les Saisons de la Dance*.

"Good news: the Ballet of the Capitol exhibits good dance, pride, and its girls are pretty," noted the French newspaper *Le Monde*.

Reserved seat tickets are \$20 with discounts for senior citizens and students and may be purchased in advance via telephone with VISA or MasterCard by calling 456-8194. For in-person sales, the Roberts box office is open daily from 10 a.m. to 4 p.m. or until time of performance.



BALLET DU CAPITOLE DE TOULOUSE

### Performing Arts Series' chamber music —

## Borromeo String Quartet brings 'music making of utter genius' to Gaige Hall auditorium Feb. 2



Praised for "music making of utter genius," the Borromeo String Quartet makes a return performance to Rhode Island College in the Performing Arts Series' Chamber Music Series Monday, Feb. 2, at 8 p. m. in Gaige Hall auditorium.

On the program will be Schoenberg's Quartet #1 in D minor, Opus 7; Copland's Adagio and Ravel's Quartet in F Major.

The Borromeo Strings made its last appearance at RIC two years ago. This year, they join the Muir String Quartet for the 1997-98 chamber music series at RIC. The Muir performed Sept. 29 and Oct. 27 and is scheduled for a third performance April 6.

Formed in 1989 by four young musicians from the Curtis Institute of Music, the Borromeo String Quartet has risen to international prominence, receiving praise for every aspect of its playing.

Winner of the 1991 Young Concert Artists International Auditions, the quartet made its New York and Washington debuts at the 92nd Street Y and the Kennedy Center, respectively.

It has since appeared throughout North America on many of the most distinguished chamber music series and festivals. Its American engagements have included performances at Carnegie Hall's Weill Recital Hall, Lincoln Center's Alice Tully Hall and the Library of Congress.

Its international tours have taken it from Moscow to Montevideo, Uruguay, and include concerts at Suntory Hall in Tokyo, the Concertgebouw in Amsterdam, Wigmore Hall in London and the Bastille Opera in Paris.

It is the first ensemble to receive the prestigious

Artist Diploma from the New England Conservatory, where they now serve on the faculty.

The quartet maintains a strong connection to contemporary composers, having worked with John Harbison, John Cage, Gunther Schuller and Gyorgy Ligeti.

Leon Kirchner also has been an important mentor to the ensemble, coaching them in both his own music and works from the standard repertoire.

More recently, composer Malcolm Peyton dedicated a new work to the Borromeo String Quartet. Their newest commissions, through Chamber Music America, are for pieces by Michael Ellison and Andrew Vores, whose work will incorporate elements relating to the four different nationalities of the quartet's members.

The quartet's members are Nicholas Kitchen of Durham, N.C., who plays on a Stradivarius violin, purchased expressly by the A. J. Fletcher Foundation in Raleigh, N.C., for a long-term loan to Kitchen; Ruggero Alliffranchini of Milan, Italy, on violin; Hsin-Yun Huang of Taipei, Taiwan, on viola, and Yeesun Kim of Seoul, Korea, on cello.

The *Boston Globe* said, "The Borromeo String Quartet is simply the best there is on the planet...the only real treasure, it's been said, is spiritual treasure, and this was it."

The *Strad* said of one of its performances, "This was music making of utter genius."

Tickets are \$18 with discounts for senior citizens and students and can be purchased at Roberts (not Gaige) Hall box office or in advance by phone via VISA or MasterCard by calling 456-8194.

A pre-concert buffet at 6 p.m. in the Faculty Center is offered for \$17.50. Pre-paid reservations are required. Call 456-8194.



# Trinity Rep launches road show of 'Fires in the Mirror' at RIC

Trinity Repertory Company, Rhode Island's Tony Award-winning theatre, under the artistic direction of Oskar Eustis, will begin a multi-state tour January through March of *Fires in the Mirror* with the first performance at Rhode Island College Wednesday, Jan. 28, at 8 p.m. in Roberts Hall auditorium.

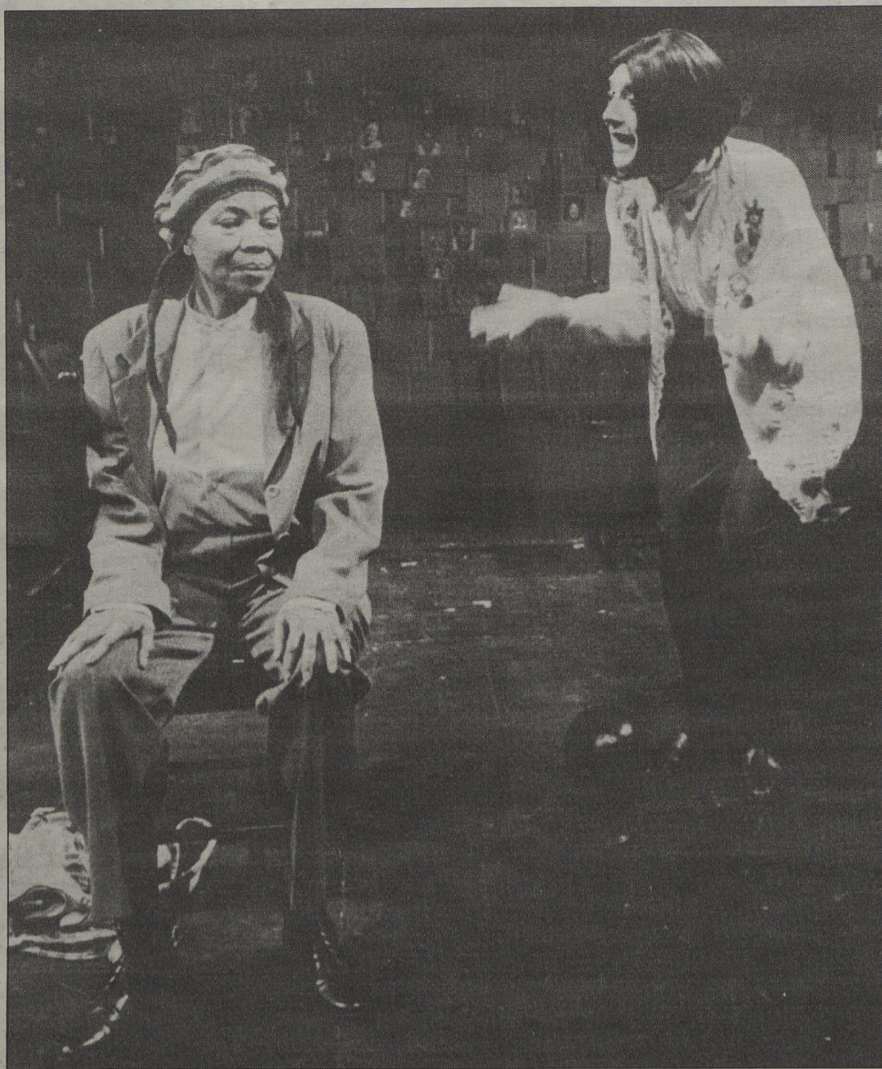
A recent new addition to the College's Performing Arts Series this season, *Fires in the Mirror* is Anna Deveare Smith's galvanizing profile of the incendiary conflict between African-Americans and Hasidic Jews in the Crown Heights section of Brooklyn.

Frank Rich of the *New York Times* called *Fires in the Mirror* "quite simply the most compelling and sophisticated view of racial and class conflict that one could hope to encounter."

Trinity Rep's production, originally staged in the 1995-96 season, received an equal measure of critical acclaim with William Gale of the *Providence Journal-Bulletin* calling it "...arresting, riveting theatre in a beautifully realized production."

In the play, actors Barbara Meek and Becky London portray more than two dozen characters who were adversaries, victims and eyewitnesses of the historical events in Crown Heights during the summer of 1991, during which a 9-year-old black boy was killed by a Rabbi's motorcade, a Hasidic Jew was slain in retaliation and riots rocked the Crown Heights neighborhood, reverberating beyond New York into the international scene.

The Trinity Rep production reunites cast members Meek and London with director Brian Kulick and designers Mark Wendland (set), Russell Champa (lighting) and William Lane (costumes).



**FIRES IN THE MIRROR** by Trinity Rep is a compelling account of race relations in the '90s. Above, Barbara Meek (left) and Becky London act out a scene in the play which will be staged first at RIC as part of a multi-state tour. (Photo by Mark Morelli)

Meek is well known to regional audiences as a Trinity Rep company member for more than 30 seasons, and is known nationally for her fea-

tured roles on television's *Archie Bunker's Place* and *Jake's Family*. London, who made her Trinity Rep debut in *Fires*, was most recently

seen as Charlotte in Tom Stoppard's *The Real Thing* at the Old Globe Theatre in San Diego.

Director Kulick, now in his second season as artistic associate at the Public Theatre in New York, was Trinity Rep's associate artistic director from 1994-96.

*Fires in the Mirror* is part of a cycle of plays written by Pulitzer-nominated Deveare Smith called *On the Road: A Search for the American Character*. In *Fires*, Deveare Smith utilizes a trademark verbatim technique which she describes as "interviewing people and later performing them using their own words."

With the interview technique, she says her goal is to "find American character in the way that people speak."

"We're especially proud to introduce or reintroduce Trinity Rep to other parts of the country with a production as compelling and engaging as *Fires in the Mirror*," said artistic director Eustis.

He and managing director Patricia Egan are confident, they said, that touring productions will become an integral part of Trinity Rep's artistic agenda.

This tour marks the first time Trinity Rep has gone on the road since 1981, when it brought productions of *Buried Child* and *Of Mice and Men* to India and Syria.

The multi-state tour of *Fires in the Mirror* will bring Trinity Rep to venues across the country, starting at RIC.

Reserved seat tickets are \$18 with discounts for senior citizens and students and may be purchased in advance via telephone with VISA or MasterCard by calling 456-8194. For in-person sales, the Roberts box office is open daily from 10 a.m. to 4 p.m. or until time of performance.



**FIFTH FORMAN AWARDED:** Christopher Mink (right), a junior music education major, is the recipient of the fifth annual Sylvan and Helen Forman Endowed Scholarship for Music. Above, Helen Forman congratulates Mink while Prof. Robert Elam, chair of the Department of Performing Arts, looks on. The award was presented Dec. 1 at the RIC Chorus and Symphony Orchestra concert in Roberts Hall auditorium. (What's News Photo by Gordon E. Rowley)

## Young People's Concert is set for Jan. 18

The American Band, one of the nation's oldest concert bands, will present its annual Young People's Concert Sunday, Jan. 18, at 3 p.m. in Rhode Island College's Roberts Hall auditorium.

"Music Tells a Story" is the theme

of this year's concert and will feature Rhode Island storyteller Len Cabral.

The band, founded in 1837, is under the direction of Gene J. Pollart.

Tickets are \$5. Call the RIC music department at 456-8244 or 831-0441 for more information.

## Work of Jesper Christiansen, Danish painter, at Bannister Gallery Dec. 4-23

The work of noted Danish painter Jesper Christiansen will be on exhibit in Rhode Island College's Bannister Gallery Dec. 4-23.

Entitled "Plant Paintings," this recent work marks a departure from his earlier, more obviously conceptual work, says Dennis O'Malley, gallery director.

"In an effort to bring life back into the 'window' of painting, this new series skirts close to the 'forbidden' painterly realms of the decorative or purely retinal," says O'Malley.

A fellow of the Royal Danish Academy of Fine Arts, Christiansen's admiration for the work of Ellsworth Kelly and Mondrian has led him to retrace the organic connections inherent in their later, most abstract work and, consequently, to "re-grow" botanical forms out of the arid fields of reductive abstraction.

Christiansen's paintings have been exhibited in London and New York and in numerous exhibitions in Denmark, Norway and Sweden. They are included in the collections of major museums throughout Scandinavia.

The artist recently was awarded the Jens Sxndergaard Grant, Denmark's most prestigious award for painting. He also is a widely published writer on art and has written commentary on contemporary art in Copenhagen for *Art in America* magazine.

This exhibit is curated by O'Malley, whose essay on Christiansen's work, "Phototropic Form," recently was published in Copenhagen by Galerie



**'DEFENSIVE OUTSIDE PAINTING,'** 1996, acrylic on canvas, 84" x 68" by Jesper Christiansen.

Mikael Andersen.

O'Malley will give a gallery talk on the artist and his exhibit Wednesday, Dec. 10, at 3 p.m. in Bannister Gallery.

Both the exhibit and the gallery talk are free and open to the public.

Exhibit opening is Dec. 4 from 7 to 9 p.m. Regular gallery hours are Tuesday through Saturday, 11 a.m. to 4 p.m., and Tuesday and Thursday evenings from 6 to 9. The gallery is closed holidays.

For more information, call Dennis O'Malley at 456-9765.



## Focus on Faculty and Staff

## RIC Dance Company — Winter Concert with Schmitz & Dancers Dec. 13

**Joan Glazer**, professor of elementary education, recently presided over the second regional conference of the International Board on Books for Young People held in Albuquerque, N.M., welcoming the participants, speaking on "Our Work Around the World," and giving a closing summary. Glazer is president of the United States Board on Books for Young People, the U.S. national section of the international organization. Participants from the U.S., Canada, Venezuela, Colombia, Japan and Sweden met to hear authors, illustrators and publishers of children's books address international and multicultural issues in literature for children.



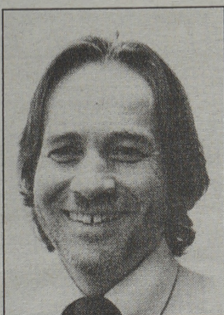
JOAN GLAZER

**Lenore D. Collins**, associate professor in the Department of Management and Technology, was a speaker at the recent New England Association of Technology Teachers annual conference held in Newport. The title of her presentation was "The Electronic Book: A Look at the Future of the Printing Industry."

**Thomas H. Meedel**, associate professor of biology, together with James Lee and Steve Farmer of the Mayo Clinic in Arizona, published a paper in a May issue of the journal *Development* entitled "The single MyoD-family gene of *Ciona intestinalis* encodes two differentially expressed proteins: implications for the evolution of chordate muscle gene regulation." He also presented the work described in the *Development* paper at a joint meeting of the American Society for Developmental Biology and the International Society of Developmental Biology which was held in Snowbird, Utah, July 5-10.

**Tracy Caravella**, assistant professor of health and physical education, was recently elected to the position of vice-president elect-health at the RIAHPERD 1997 conference held in Newport. **Betty J. Rauhe**, assistant professor of health, was a contributor at the conference. Also, **Alice Marchant**, adjunct professor of physical education, was installed as 1997-98 president of the Rhode Island Association for Health, Physical Education, Recreation and Dance (RIAHPERD). In addition, four RIC health and physical education major students took first place in the first annual poster contest conducted by RIAHPERD. They are **Collean Creedon**, **Dacia Scarpellino**, **Jeffrey LaPierre** and **Frank Russell**.

**Thomas E. Malloy**, professor of psychology, has published four papers in 1997 with various colleagues from RIC, Westfield State College, the University of Connecticut, the University of Western Ontario, the University of California at Los Angeles and Beijing Normal University. Two of these papers involved collaboration with **Fredric C. Agatstein**, associate professor of psychology at RIC. Three of Malloy's papers appeared in the *Journal of Personality and Social Psychology* (JPSP) and one in the journal *Health Psychology* (HP).



THOMAS MALLOY

Malloy also has recently been invited to serve on the editorial board of three journals in social psychology: the *Journal of Personality and Social Psychology*, *Basic and Applied Social Psychology*, and *The International Journal of Personal and Social Relationships*. As a member of these editorial boards, Malloy will represent RIC in the review and publication of some of the new and most important research in social psychology.

Rhode Island College Dance Company's Winter Concert Saturday, Dec. 13, at 8 p.m. in Roberts Hall auditorium will feature an evening of works by Peter Schmitz, including a new commission for the RIC dancers.

Making its Rhode Island debut, Peter Schmitz and Dancers is a New England-based project dance company that has appeared in Massachusetts, Vermont and New York.

The RIC dancers have worked with Schmitz during several guest residencies this fall and recently finished work on a new dance, *We Forget Ourselves in Watching*.

Developed collaboratively with the dancers, this work provides a "challenging and enigmatic landscape of youthful society and possibility," says RIC dance director Dante DelGiudice.

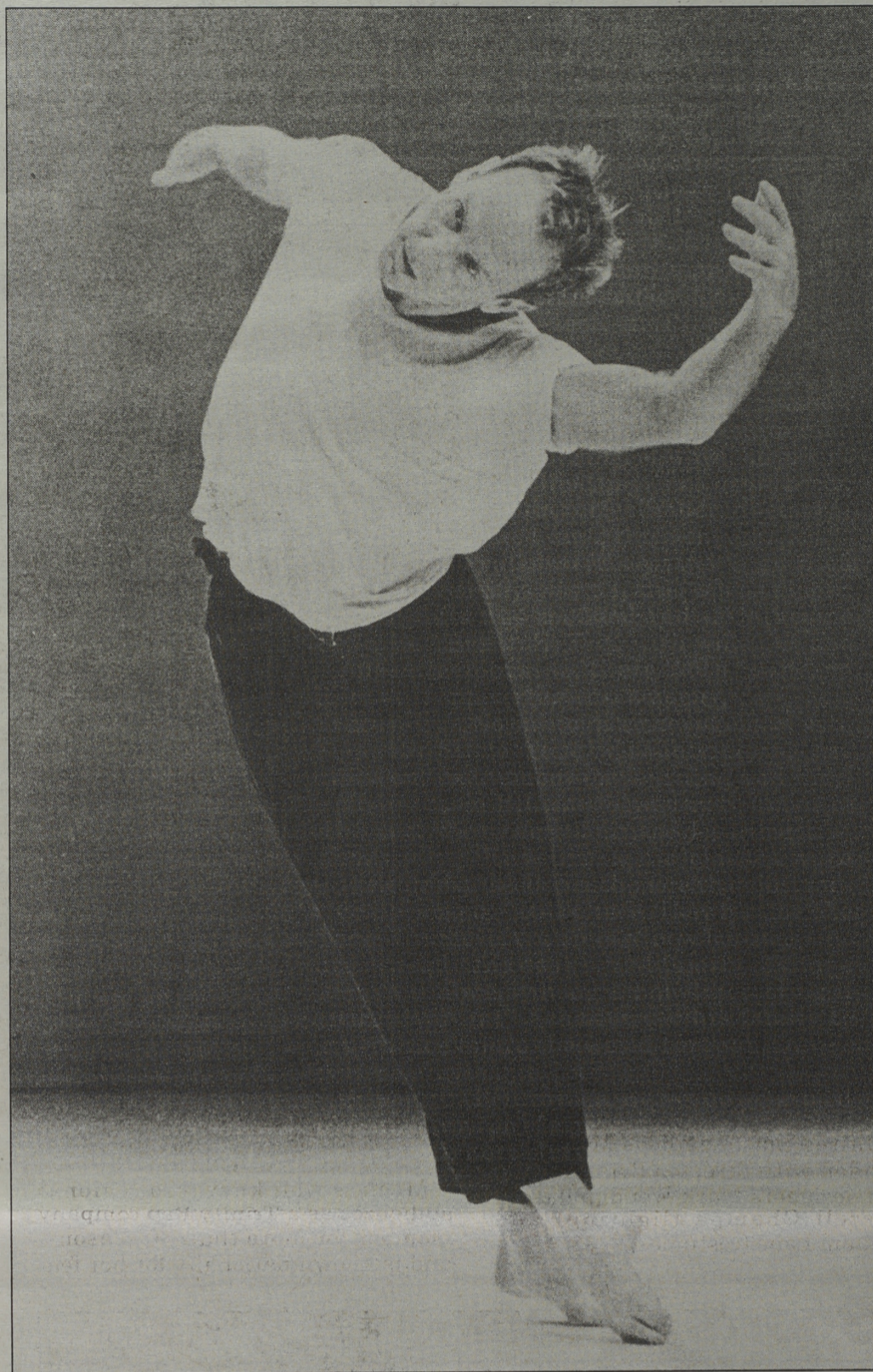
Appearing in the work are RIC's Rachel Bodner, Nikki Garriepy, Stacey Grasso, Kim Kirkwood, Meaghan McDonough, Kristen Penza and Bernice Senape.

The works by Schmitz will include *Skin* and *These Things I do with My Hands*.

Concerning the latter, the *Boston Herald* noted: "In Schmitz' new *These Things I Do with My Hands*, hands lead the body through gorgeously sculpted yet fluid and athletic movement...Schmitz and his superb dancers gave a lyrical, committed performance."

Schmitz has received other favorable notices for his post-modern dance works which "explore contemporary experience employing a very personal and idiosyncratic movement idiom," according to DelGiudice.

General admission tickets are \$10 with discounts for senior citizens, groups and students and may be purchased at the Roberts box office. For advance tickets, call 456-8060. For information, call 456-9791.



PETER SCHMITZ

## Internat'l multi-cultural ensemble to perform in Chamber Music Series Dec. 10

The multi-cultural ensemble No World Improvisations (NWI), featuring four traditionally trained virtuosos from Africa, Asia and America, will perform new works and improvisations emanating from the roots of these cultures that evolve into a synthesis of world culture musical ideas in the Wednesday, Dec. 10, Rhode Island College Chamber Music Series at 1 p.m. in Roberts Hall 138 (recital hall).

The musicians perform on a variety of instruments dating over 3,000 years, including double reed folk instruments from India, the world's only electric komungo and the Asian pipa.

Original costumes from each of these cultures lend to the visual enhancement of the performance.

"The performances are reminiscent of a universal musical village with African drums, Asian strings and reeds from around the world," says NWI.

The performers are Min Xiao-Fen from China, a master of contemporary pipa music; Abraham Adzenyah, the Ghanaian percussionist, who has recorded with Bill Cosby and Friends on his jazz recording series and appeared with the Alvin Ailey Dance Company and the National Ballet of Ghana.

Also, soloist Korean-American Jin Hi Kim, who has performed with the Kronos String Quartet at the



NO WORLD IMPROVISATIONS

Lincoln Center and is the first Korean-American to receive a composition grant from the National Endowment for the Arts and recently the Rockefeller Foundation, and double reed virtuoso Joseph Celli, who performs on double reed

instruments from around the world and is "America's premiere oboist," according to the *Village Voice*.

The performance is free and open to the public. For more information, call John Pellegrino, series coordinator, at 456-8244.



# RIC CALENDAR

DEC. 8 — FEB. 2

Happy Holidays!

**December**

**8-12 Mon.-Fri.**

**Holiday Drive.** All food/toys/clothing should be brought to Student Community Government office, S.U. Room 200. Sponsored by Class of 2000.

**Dec. 8-23**

**Art.** Jesper Christiansen—"Plant Paintings" exhibit in Bannister Gallery.

**9 Tuesday**

**7 p.m. -12:30 a.m.**—*Multi-Cultural Ball* at The Radisson Airport Hotel. \$23 tickets at S.U. Info. Desk. Sponsored by Harambee.

**10 Wednesday**

**9 a.m.-4 p.m.**—*Unity Service Day Bone Marrow Donor Drive* in Whipple 102B. Sponsored by Asian Association, Harambee, LASO, and Native American Student Network.

**10 a.m. - 4 p.m.**—*Bake Sale* on the Quad. Sponsored by the Class of 2000.

**1 p.m.**—*Music.* No World Improvisations in Roberts 138. Part of Chamber Music Series.

**3 p.m.**—*Gallery Talk* on artist Jesper Christiansen, Danish painter whose work is on display in Bannister Gallery, by Dennis O'Malley. In Bannister Gallery.

**11 Thursday**

**4 p.m.**—*The Children's Giving Tree Annual Holiday Dinner* in Donovan Dining Center. This year's holiday buffet dinner will feature an Ornament Making Party to support Hasbro's Children's Giving Tree. College community - \$10. Sponsored by Residential Life and Housing, Donovan Dining Center, Student Graphics Department, and Campus Center.

**13 Saturday**

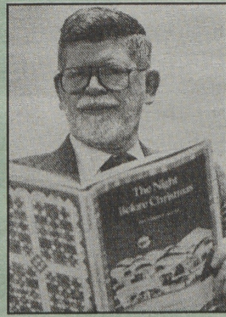
**8 p.m.**—*Dance: RIC Dance Company's Annual Winter Concert with Peter Schmitz and Dancers* in Roberts Auditorium. General admission \$10; senior citizens, groups, and non-RIC students \$8; RIC students \$4.

**14 Sunday**

**11:30 a.m.**—*Holiday Brunch Bingo* in Donovan Dining Center. Free Bingo! Sponsored by Student Activities.

**17 Wednesday**

**2:30 - 6 p.m.**—*Holiday Open House and Annual Tree Lighting Ceremony* at President Nazarian's House on Fruit Hill Ave. John Browning, professor emeritus of history will read "Twas the Night Before Christmas." Tree lighting takes place at 5 p.m.



**John Browning, professor emeritus of history will read "Twas the Night Before Christmas" at the President's 15th annual Holiday Open House and Tree Lighting Dec. 17.**

**6:30 - 8 p.m.**—*Christmas Caroling.* Bus will leave Sweet Hall at 6:30 p.m. Sponsored by Weber Hall R.A. and Student Activities.

**January**

**4-8 Sun.-Thurs.**

**Ski Trip to Sunday River.** \$210 tickets for RIC students. \$220 tickets for all others. Price includes: transportation, four nights condo lodging, and four-day ski pass (all lifts). Beginner lessons available! Sponsored by The Outdoor Adventure Club, Programming, and the Recreation Center. For more info, contact John Taylor, 456-8400.

**18 Sunday**

**3 p.m.**—*Music. American Band Annual Children's Concert* in Roberts auditorium. General admission \$5.

**24 Saturday**

**8 p.m.**—*Dance: Ballet du Capitole de Toulouse* in Roberts auditorium. Reserved seating \$20, senior citizens and RIC faculty/staff \$19, non-RIC students \$14, RIC students \$5.

**26 Monday**

Classes resume.

**28 Wednesday**

**8 p.m.**—*Theatre.* Trinity Rep's performance of *Fires in the Mirror* in Roberts auditorium. Reserved tickets are \$18 with discounts for senior citizens and students and can be purchased at Roberts Hall box office daily from 10 a.m. to 4 p.m. or with Visa or Mastercard by calling 456-8194.

**February**

**2 Monday**

**8 p.m.**—*Music. Borromeo String Quartet* in Gage Hall auditorium. Reserved seat tickets are \$18 with discounts for senior citizens and students and can be purchased at Roberts Hall box office daily from 10 a.m. to 4 p.m. or with Visa or Mastercard by calling 456-8194.

## Sports Events

**December**

**8 Monday**

**7:30 p.m.**—*RIC Women's Gymnastics* vs. Brown University. Home.

**9 Tuesday**

**5:30 p.m.**—*RIC Women's Basketball* at Framingham State College.

**7 p.m.**—*RIC Men's Wrestling* vs. American International College. Home.

**7:30 p.m.**—*RIC Men's Basketball* at Framingham State College.

**11 Thursday**

**7:30 p.m.**—*RIC Men's Basketball* vs. Salve Regina University. Home.

**13 Saturday**

**1 p.m.**—*RIC Women's Gymnastics* vs. University of Bridgeport. Home.

**2 p.m.**—*RIC Women's Basketball* at Plymouth State College.

**4 p.m.**—*RIC Men's Basketball* at Plymouth State College.

**January**

**2 Friday**

**5 p.m.**—*RIC Women's Basketball* vs. St. Norbert College at Flagler College (FL).

**6 p.m.**—*RIC Men's Basketball* at Treasure Island Classic Tournament (Daytona, FL).

**3 Saturday**

**6/8 p.m.**—*RIC Men's Basketball* at Treasure Island Classic Tournament (finals/consolation).

**5 Monday**

**4 p.m.**—*RIC Women's Basketball* at Webber College (FL).

**6 Tuesday**

**3:30 p.m.**—*RIC Women's Basketball* at Flagler College (FL).

**5:30 p.m.**—*RIC Men's Basketball* vs. Gordon College at Embry Riddle (FL).

**10 Saturday**

**2 p.m.**—*RIC Women's Basketball* at Eastern Connecticut State University.

**4 p.m.**—*RIC Men's Basketball* at Eastern Connecticut State University.

**7:30 p.m.**—*RIC Men's Wrestling* at Hunter College Invitational.

**13 Tuesday**

**7:30 p.m.**—*RIC Men's Basketball* at University of Southern Maine.

**14 Wednesday**

**7:30 p.m.**—*RIC Men's Wrestling* at Wesleyan College.

**15 Thursday**

**7 p.m.**—*RIC Men's Basketball* at Bridgewater State College.

**TBA**—*RIC Women's Basketball* at Salve Regina University.

**17 Saturday**

**5:30 p.m.**—*RIC Women's Basketball* vs. University of Mass-Boston. Home.

**7:30 p.m.**—*RIC Men's Basketball* vs. University of Mass-Boston. Home.

**7:30 p.m.**—*RIC Men's Wrestling* at SUNY Oneonta.

**20 Tuesday**

**5:30 p.m.**—*RIC Women's Basketball* vs. Western Connecticut State University. Home.

**7:30 p.m.**—*RIC Men's Basketball* vs. Western Connecticut State University.

**21 Wednesday**

**7:30 p.m.**—*RIC Men's Wrestling* at Massachusetts Institute of Technology.

**24 Saturday**

**1 p.m.**—*RIC Women's Basketball* at Keene State College.

**1 p.m.**—*RIC Women's Gymnastics* at Southern Connecticut University.

**3 p.m.**—*RIC Men's Basketball* at Keene State College.

**7:30 p.m.**—*RIC Men's Wrestling* at Plymouth State College Invitational.

**27 Tuesday**

**5:30 p.m.**—*RIC Women's Basketball* vs. University of Mass-Dartmouth. Home.

**7:30 p.m.**—*RIC Men's Basketball* vs. University of Mass-Dartmouth. Home.

**28 Wednesday**

**7:30 p.m.**—*RIC Men's Wrestling* vs. Western New England College.

**29 Thursday**

**7 p.m.**—*RIC Women's Basketball* at Albertus Magnus College.

**31 Saturday**

**1 p.m.**—*RIC Women's Basketball* vs. Plymouth State College. Home.

**3 p.m.**—*RIC Men's Basketball* vs. Plymouth State College. Home.

**7:30 p.m.**—*RIC Men's Wrestling* at University of Southern Maine tri-match with Wesleyan.

**February**

**1 Sunday**

**1 p.m.**—*RIC Women's Gymnastics* vs. Ursinus and Southern Connecticut State University.

**Notice of Affirmative Action and Nondiscrimination**

Rhode Island College is committed to equal opportunity and affirmative action. No student, employee, or applicant will be denied admission, employment, or access to programs and activities because of race, sex, religion, age, color, national origin, handicap/disability status, sexual orientation/preference, or veteran status. This College policy is in concert with state and federal nondiscrimination laws. Inquiries concerning the College's administration of the nondiscrimination laws should be addressed to the College director of affirmative action. Reasonable accommodation upon request.