



# WHAT'S NEWS

AT RHODE ISLAND COLLEGE

Vol. 20 Issue 12

Circulation over 42,000

March 27, 2000

## Alumna of Year, four other awardees, and 32 honor roll inductees named

by Shelly Murphy  
What's News Editor

The Rhode Island College Alumni Association will honor the 2000 Alumni Award and Honor Roll recipients at its annual dinner on Thursday, May 11, beginning with a reception at 5:30 p.m. followed by dinner at 6:15 p.m., in Donovan Dining Center. The 2000 award winners are Phyllis Hunt '80, Alumna of the Year; Marlene L. Lopes, Alumni Faculty Award; Anthony O. Carlino '78, Alumni Staff Award; Sara W. Weiss '85, Alumni Service Award; and Stephen J. Anderson '72, Charles B. Willard Achievement Award. Thirty-two individuals will be inducted into the departmental honor roll.

Invitations will be mailed in early April. Tickets to the dinner are \$30 and can be purchased by calling Alumni Affairs at 401-456-8086 by May 5.

### Phyllis Hunt '80 Alumna of the Year

Phyllis has a genuine love for the College that is very evident in any conversation you have with her regarding higher education. Grateful for the advice and counseling she received from so many individuals as a student,

Phyllis is eager to "give back" always to the institution that sustained her in difficult times.

Phyllis' activities within the Alumni Association are numerous. The consummate volunteer, she is available evenings and weekends assisting with phone-a-thons, Homecoming, golf day, and the Young Alumni Group. Through Phyllis' leadership, the Young Alumni Group was launched with a strong start, and is completing its second year.

For the past 20 years she has assisted in coordinating the commencement gala. She marshals at graduate and undergraduate commencements and assists with new student orientations and admissions events.

She is always available to alumni and students, advising them in career choices and job opportunities. The Alumni Association is proud to award Phyllis the 2000 Alumna of the Year Award.



PHYLLIS HUNT

**Marlene L. Lopes**  
Alumni Faculty Award  
Special Collections Librarian & Associate Professor, Adams Library

Marlene's record of serving the informational needs of students, faculty, and visiting scholars is legendary, and her devotion to the College is evident through many years of highly effective service in a variety of assignments. One of her special projects was the creation of a collection of books, papers, and a variety of items that document the Cape



MARLENE LOPES

Verdean experience in America. This collection has achieved national recognition, including a presentation on A&E's History Channel. She is the co-author (with Richard Lobban, RIC professor of anthropology) of the *Historical Dictionary of Cape Verde*. Richard Olsen, director of Adams Library, states, "Marlene's record of service to the College is legion...she is an outstanding member of the faculty, in addition to being a kind,



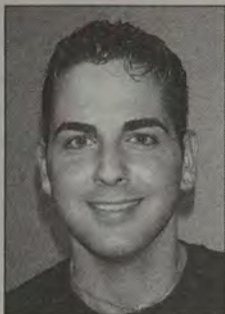
SARA WEISS



STEPHEN ANDERSON

See Alumni Awards, page 8

### Keep the Flame Burning Spotlight on Alumni Scholarship Recipients



**Gregory Jamiel**

Class of 2001

Recipient of:

Children of Alumni Academic Award

Gregory A. Jamiel of Cranston has a long family history of affiliation with RIC.

His great grandmother Ignatia Garfside graduated from the Normal School in 1926; his grandfather James Dolan from RICE in 1956; his aunt Kathi (Dolan) Clarkin from RIC in 1987, and his mother, Cheryl (Dolan) Jamiel in 1990.

One has to keep up the tradition! After graduation from Cranston

See Scholarship, page 4



**POETRY IN MOTION:** Two members of the Cambodian Youth Group of Fall River perform a traditional dance during the Asian Cultural Show in the Student Union on March 11. For more on this colorful event, see pages 6 and 7. (What's News Photo by Gordon E. Rowley)

## Respondents, workshops set for diversity symposium

by Shelly Murphy  
What's News Editor

Respondents to the keynote address by Marcia Ann Gillespie, editor-in-chief of *Ms.* magazine at Rhode Island College's fifth annual Dialogue on Diversity Spring Symposium on Wednesday, April 12, will be Anthony Maione '75, executive director of the National Conference for Community and Justice (NCCJ); and Christine Roundtree, '79, executive director of the Providence Human Relations Committee.

The address and responses will be presented from 12:30 to 2 p.m. in Gaige Hall auditorium. Gillespie's topic will be "Confronting Racism and Sexism Toward A More Humane Society." The event is free and open to the public.

Corporate partners of the symposium are *The Providence Journal* and Cox Communications. Community partners are NCCJ and the Rhode Island Coalition Against Domestic Violence.

"The College appreciates the gen-

See Gillespie, page 5



## The Way We Were...

This popular item in What's News continues in order for you to be able to revisit your alma mater with a selection of photos from the past — the College's past, whether the current era (Rhode Island College) or past eras (Rhode Island College of Education or Rhode Island State Normal School). We invite your contribution of old photos, along with sufficient information about each, such as who's in the photo and what they are doing, the year it was taken and place (if possible). In the meantime, we'll continue searching our files for interesting pictures of past College life.



**FORE!** Associate professor of physical education (and now associate professor emerita) Billie Burrill teaches golf in the Walsh Center, which burned in 1992. We can't pinpoint the date of this photo, nor identify any of the students. Does anyone out there recognize himself/herself or a classmate? (file photo)

## 'Math Spans All Dimensions' is theme of Math Awareness Month

Rhode Island College Mathematics and Computer Science Department is planning a speaking program to celebrate national Math Awareness Month during the month of April.

Sponsored by the Joint Policy Board for Mathematics, comprised of representatives of the Mathematics Association of America, the American Mathematics Society and the Society for Industrial and Applied Mathematics, Math Awareness Month 2000 has "Math Spans All Dimensions" as its theme.

Tom Banchoff, professor of mathematics at Brown University, will speak on "Math Has Many Dimensions" Wednesday, April 5, at 4 p.m. in Gaige Hall auditorium.

Banchoff is president of the MAA and the recipient of its national award for Distinguished University Teaching. He is the author of the highly acclaimed MAA book, *Beyond the Third Dimension*.

"Rhode Island College is honored to have such a distinguished mathematician as Dr. Banchoff as our keynote speaker," said Ann E. Moskol, professor of mathematics and chair of the Mathematics Awareness Committee.

Following Banchoff's talk, there

will be a short program honoring RIC students and faculty from 5 - 5:30 p.m., and a reception with refreshments from 5:30 - 6 p.m. during which the public can view poster displays of current RIC students.

In the second part of the speaking program, Marty Golubitsky, professor of mathematics at the University of Houston, will address the topic of "Symmetric Chaos and Patterns on Average" Wednesday, April 26, at 1 p.m. in Gaige 258.

Golubitsky (with M. Field) is the author of several books on this area including, *Symmetry in Chaos: A Search for Pattern in Mathematics, Art and Nature*, published by the Oxford University Press in 1992.

The two speakers are being sponsored by the Mathematics & Computer Science Department and the College Lectures Committee.

The Mathematics Awareness Committee, consisting of Moskol and math faculty members James E. Bieren, Mariano Rodrigues, Roger Simons and Ying Zhou, coordinated the events.

For more information, call Moskol at 456-9761 or email her at Amoskol@ric.edu.

## Focus on Faculty and Staff

Faculty and staff are encouraged to submit items of information about their professional endeavors to What's News, Office of News and Public Relations, 300 Roberts Hall or email them to csousa@ric.edu.

**Bill Wilson**, director of musical theatre and assistant professor of theatre, presented two workshops in theatre dance and in tap dance at the American Alliance for Health, Physical Education and Dance Convention Feb. 24-25 in Philadelphia. He also presented workshops in stage movement and 19th and 20th century dance at Culver Military Academy in Indiana Feb. 10 and 11.

**Sharon M. Fennessey**, a fifth grade teacher at RIC's laboratory school, Henry Barnard, has written a book, *History in the Spotlight*, which addresses creative drama and theatre practices for the social studies classroom. The 192-page paperback, published by Heinemann, is in bookstores, including the Campus Store at RIC. For more information, contact the publisher at [www.Heinemann.com](http://www.Heinemann.com). Fennessey has written, directed and choreographed many theatre productions for young audiences. She also is a published playwright of historical works and a classroom drama specialist, and works actively as a consultant and presenter at teacher conferences. Many of the ideas outlined in her book became the subject of her March 9 workshop at the Northeast Regional Conference on Social Studies at Yale University.



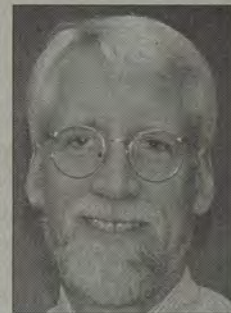
seen on the Cox Communications televised Town Meeting on "Volunteerism" and in May at the Uxbridge Historical Society in Massachusetts.

**John M. Aflague**, assistant professor of nursing received the 1999 American Nurses Association (District 5 Inc., M.N.A.) Distinguished Service Award during the M.N.A., District 5 Inc. Annual Meeting held recently.

Professors from the department of health and physical education presented at the Eastern District Association of the American Alliance for Health, Physical Education, Recreation and Dance annual convention in Philadelphia last month. **Tracy Caravella-Nadeau** presented "Enhancing Your Creative Talents in the Health Education Classroom." **Karen S. Castagno** and **Bennett Lombardo**, professor, presented a round table session entitled "Changing Sport in America: Alternatives for the New Millennium."

Three students majoring in physical education at Rhode Island College also attended the convention. **Kristy Siravo**, student representative to the executive board, planned events for student members, presided at numerous sessions and presented a round table session with **Jennifer Fisette** and **Kristen Follows** entitled "Changing Sport in America: Alternatives for the New Millennium."

**Duncan A. White**, associate professor of psychology, chaired the regional meeting of comparative psychologists and gave an invited paper entitled "Introducing Psychology from the Students' Perspective" at the Eastern Psychological Association Meeting on March 24 in Baltimore, MD. White is an organizational member of the Rhode Island Teachers of Psychology, which evolved from an initiative by the Educational Directorate of the American Psychological Association.



## WHAT'S NEWS

AT RHODE ISLAND COLLEGE

**Editor:** Shelly Murphy

**Associate Editor:** George LaTour

**Staff:** Pauline McCartney, Word Processing Supervisor; Gordon E. Rowley, Photographer; Cynthia L. Sousa, Writer/Technical Assistant

**What's News at Rhode Island College** (US681-650) is published biweekly by Rhode Island College Office of News and Public Relations, 600 Mt. Pleasant Ave., Providence, RI 02908. It is published throughout the academic year except during semester breaks. Periodicals postage paid at Providence, RI

**Postmaster:** Send address changes to What's News at Rhode Island College, Office of News and Public Relations, 600 Mt. Pleasant Ave., Providence, RI 02908

**Deadline:** Deadline for submission of copy and photos is noon the Friday two weeks before publication date.

**Telephone:** (401)456-8090

**Fax:** 401-456-8887

**Printing:** TCI Press, Seekonk, Mass.

The next issue of *What's News* is Monday, April 10.

Deadline for submission of copy, photos, etc. is Friday, March 31.

Story ideas are welcome. Call 401-456-8090 or email [smurphy@ric.edu](mailto:smurphy@ric.edu).



## Alumnus William Arnold '75 —

# As a Hollywood production designer he's responsible for 'the look' of a movie

by George LaTour  
What's News Associate Editor

"The success of a movie depends on what you do along with the actors," says Hollywood production designer William Arnold '75.

And success is something he's experienced in California where he moved from Chicago about five years ago.

He was nominated for an Oscar for best art direction for his work on the 1996 hit movie *L.A. Confidential* and for the 1997 movie *Pleasantville*.

Arnold has been alternately art director and production designer for a number of movie and television productions since 1991. His credits as art director also include *Snow Falling on Cedars*, *Primal Fear*, *The Bridges of Madison County*, *Losing Isaiah*, *With Honors* and *Blue Chips*.

He was production designer for *Mo' Money* and co-production designer for *Magnolia*.

Most recently he served as production designer for a television pilot *L.A. Confidential*, which is based on the movie. The producers are "looking around for a buyer" so it hasn't made its way as a television series just yet.

Quite an impressive record for the Rhode Island College theatre and speech graduate.

"As production designer, you're responsible for finding suitable locations," says Arnold, whose role as production designer comes under that of a producer. As production designer, however, he's in charge of the set designers, construction and

painting crews and oversees the props department and wardrobe.

"It all has to integrate in the right way, so different elements don't clash.

"As far as the look of a picture, success depends on what you do along with the actors. You've got to make sure it's as believable as the performers," says Arnold.

He finds his work rewarding but demanding.

A movie usually requires 10 weeks of preparation and about 12 weeks for shooting. Overall, it takes "somewhere around six months for a project, although some get to be a lot longer," says Arnold.

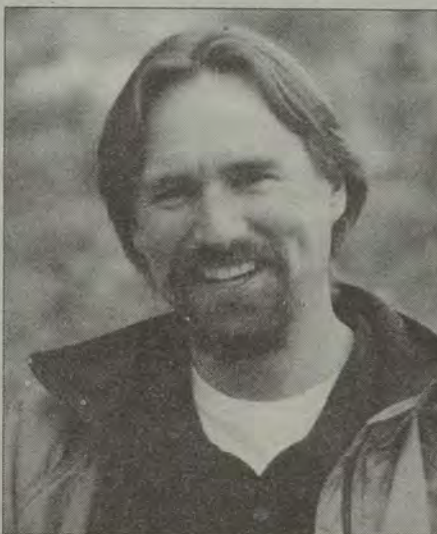
"It's a pretty long day, starting at 7 in the morning. I get to the studio or film set by 6:30 a.m. and go until about 7 at night."

"So, it's not all glamorous all the time — maybe once in awhile," he admits.

About one of the stars of *L.A. Confidential*, Kevin Spacey, Arnold says he was on the set with him — "one of many of the actors who have become big names. You see them close up and they're no different from you and me."

He is the son of Edmund and Norma Arnold who still reside in the

Riverside section of East Providence. Arnold gets back to Rhode Island to visit family, which includes his two sisters, "every two or three years" and his parents visited him in his California home in Calabasas just recently.



WILLIAM ARNOLD

After his graduation from RIC, he worked in summer stock theatre for a couple of years and then moved to Chicago where he continued to pursue theatre work and ventured into films. During this time he met his wife, Tracey. The couple now has three children.

After 18 years in the Windy City, he and his family moved to California where he completed the

transition from theatre to film work.

"I found when I was in Chicago I had to be away from home a lot. Out here, I'm more in town and closer to the family," he says.

Currently, he's working on another TV pilot called *Sherman's March* about an advertising executive from New York who gets transferred to North Carolina.

"It's a romantic comedy," explains Arnold, who says that like the television version of *L.A. Confidential*, a buyer has to be found. He says "it might" be on your television screen by September.

## R.I. Geographic Bee is at RIC April 7

Some 96 students representing schools from across Rhode Island will compete for state-level honors in the Rhode Island Finals of the 2000 National Geographic Bee Friday, April 7, from 1 to 6 p.m. at various sites on the Rhode Island College campus.

The first-place winner will receive \$100 and other prizes and get an all-expense paid trip — accompanied by a teacher escort — to compete in the national finals at the National Geographic Society Headquarters in Washington, D.C., May 23 and 24.

Now in its 12th year, the bee is designed to encourage the teaching of geography and to test students' knowledge of geography.

Students in grades four through eight are eligible to compete.

State finalists were selected in January through school geography bees and a written examination.

The final round, moderated by RIC's Mark T. Motte, assistant professor of geography, will determine the first, second and third place winners.

Faculty members from the RIC Department of Anthropology/Geography and other departments will serve as moderators for the preliminary rounds and as judges for all rounds.

The event is being sponsored by the National Geographic Society and administered locally by the Rhode Island Social Studies Association. Patricia M. Jarvis '70 of the Bernon Heights Elementary School in Woonsocket and Roger P. Gagnon '68 of Woonsocket Middle School are the coordinators.



GUEST SPEAKER: Myrth York, former gubernatorial candidate, speaks in the Student Union ballroom on March 8 in commemoration of Women's History Month. York's appearance was sponsored by the RIC Women's Center.



## What's News

### Upward Bound accepting teacher applications for summer program

Upward Bound program at Rhode Island College is in the process of recruiting teachers for its summer component which runs from Friday, June 23, to Friday, Aug. 4.

Six class sections will be offered in each area of the core curriculum: English: literature and writing; mathematics; science and foreign languages. Salary for a specific assignment will be based on enrollment, class schedule and number of class/evening commitments.

Bachelor's degree in relevant area is required. Master's degree is preferred with at least three current years teaching experience with similar populations.

Teachers will work with college-bound students who will enter their sophomore, junior or senior year of high school next fall. Students come from the six Upward Bound target schools: Central Falls, East Providence, Shea, Central, Hope and Mount Pleasant.

The primary goal of Upward Bound is to help generate in these selected low-income, potential first-generation college students the skills and motivation necessary to complete high school and subsequently graduate from a four-year college.

Residence manager and residential tutor counselors positions also are available.

Applications must be received by Tuesday, April 11. For the application procedure, contact the Upward Bound office at 401-456-8081.

### Togas are optional!

If you've ever had a hankering to learn the language of Julius Caesar or at least be able to decipher Caesar's famous proclamation "Veni, Vidi, Vici" here's your chance.

Rhode Island College is offering a Latin Institute in the second session of its summer school which runs from the beginning of July to mid-August. Classes will run from 9 a.m. to 11:50 a.m. Monday through Thursday.

The instructor is Diana Delia, an assistant professor of history, who has taught Latin at Brown and Seton Hall universities and whose graduate studies at Columbia University comprised ancient history, Greek and Latin literature.

She says the six-credit course will be ideal for those teaching modern romance languages, social studies or history and will allow students to be able to read some of those famous works by the classical authors.

For more information, see the RIC summer-fall catalog or call Professor Delia at 401-456-8802.

Then you can say, "I came, I saw, I conquered" as Caesar did.



# Foundation & Alumni Affairs

## Foundation News



**Marguerite M. Brown**  
Director, Development  
Executive Director,  
Foundation

• An omega chain with a half carat diamond slide, a hand-caned rocker, a Wedgwood tea set, pearls, an original Spencer Crooks watercolor of one of the oldest homes in New England, a certificate for a simple will,

airline tickets anywhere Southwest flies, original pottery by RIC faculty members and students, and gift certificates for massages, botox injections, fitness evaluations, and rounds of golf ... What could these possibly have in common?

They are just a few of the items which have been donated to the Rhode Island College Foundation for auction at the 35th Anniversary Gala scheduled for April 7 at the Providence Marriott. Join us in honoring the individuals who had the vision to begin the Foundation, bid on a few items, and enjoy dancing to the music of *Avenue A*, all while supporting honors scholarships for our students. Tickets are \$75 per person and may still be purchased by calling the Foundation office at 401-456-8087. Dust off those dancing shoes and join us!

• You'll notice in this issue of *What's News* that there is a story on the progress and importance of the Annual Fund. The Annual Fund is our primary source of unrestricted dollars for supporting scholarships, faculty research, and alumni programming and publications. Please read your spring solicitation package carefully, and consider your gift to the Annual Fund before the end of the fiscal year, June 30, 2000. The progress of our efforts depends on your participation.

• Last issue we introduced Shana Murrell, the assistant director of alumni affairs, a new position which is supported, in part, by the Foundation. Next Sunday you will see another employment advertisement, which attests to the growth of the Foundation and the commitment the Foundation Board of Directors has made to growing the development program at the College. We will be seeking applications for a director of information systems, research, and records for the development/Foundation/ alumni operation — a position that has previously not existed. With our continued growth and your support, we find that this is the next critical position we must add to the office operations staff.

• I am very happy to report that the North Family Trust, which makes awards for projects in the East Bay area, has designated four \$1,000 scholarships for students from that area who attend Rhode Island College. The students are Tawna Dickson '01 of Tiverton, a nursing major; Angela Dyl '02 of Portsmouth, a justice studies transfer student; Joseph Michalski '02 of Middletown, a management major; and Laura Spence '01 of Portsmouth, a psychology major. This is the first time that the College has received support from the North Family Trust for scholarships or special projects.

## Annual Fund phone-a-thon provides opportunity to give back, change a life

The Spring Phone-a-thon 2000 for the RIC Annual Fund is scheduled for the weeks of April 10, 17, and 24. About 10 RIC students will be calling alumni who have not donated this year to ask for their support. The RIC Annual Fund helps provide scholarships, fund faculty research projects, and support alumni-related programs.

"As the Annual Fund campaign for the year 2000 enters its final stages, we are reaching out to some alumni with whom we have not had the chance to connect this year," said Nancy Hoogasian, annual fund director. "Establishing these connections provides an ideal opportunity for alumni to share their reflections of Rhode Island College and to update us on their lives, as well as for alumni to give back to the College."

Hoogasian, who joined the College in September, notes that conversations like these with alumni have been a valuable resource for her as she gets to know the College community. "During the course of any given day I have the opportunity to speak with many Rhode Island College alumni about their student experiences with the College. The lasting impact of the College on their lives and their commitment to giving back to the College is striking. For instance, recently two alumnae, Kathleen Kieferdorf '69 and Barbara Steere '38, shared with me some reasons why they feel it is important to contribute to the Annual Fund."

Hoogasian spoke with Kieferdorf during a trip to California in February. "Today, Kieferdorf is the director of finance at the East County Regional Chamber of Commerce in El Cajon. When she first applied for admission to Rhode Island College, her mother, without Kathleen's knowledge, actually declined her acceptance. The family

couldn't afford college tuition. They hoped that she would get a job in the business field, although she had taken college prep courses in high school.

"Not only was Kathleen accepted at RIC, but she was also chosen to receive an alumni scholarship. She

want to give back and help students the way I was helped."

Hoogasian noted, "Rhode Island College depends upon the financial resources of the Annual Fund to enhance the educational experience of our students, helping them to grow and succeed like Kathleen did."

Steere, from Omaha, Nebraska, is another alumna who shared her reasons for her longtime support of the Annual Fund with Hoogasian. "She told me that her education at RICE (Rhode Island College of Education) didn't cost a penny when she went to the College. Students actually received a stipend if they took public transportation." "They even found jobs for us while we were students," Steere recalled. "I worked at Henry Barnard School helping the principal."

"Barbara feels that her Rhode Island College education has helped provide a wonderful life for her and her family.

She likes to give back and help today's students who may not otherwise have the opportunity to obtain their degree," Hoogasian said.

The 1999-2000 goal for the Annual Fund is to raise more than \$300,000 in unrestricted funds from alumni and friends (fiscal year ends June 30), Hoogasian said. Last year, the Annual Fund provided more than \$85,000 in scholarships to 80 students as well as funding for faculty research projects and alumni-related programs like Homecoming, class reunions, and the *Alumni Magazine*.

In addition to perhaps receiving a call during the phone-a-thon, alumni can expect to receive the RIC Annual Fund Spring Appeal this week from Paul Bourget '68, president of the alumni board. For further information or to make a donation, call Hoogasian at 401-456-8827.



**CONNECTING WITH ALUM:** During a recent trip to California, Marguerite M. Brown, director of development and executive director of the Rhode Island College Foundation, visits with Kathleen Kieferdorf '69 at the East County Regional Chamber of Commerce in El Cajon, Calif. where she is director of finance. Kathleen was a recipient of alumni scholarships when she was a student at RIC.

clarified the misunderstanding and went on to become the first in her family to attend and graduate from college. While a student, Kathleen received scholarship aid from the RIC Alumni Association and work grants for all four years. After graduation, she taught at Cumberland Hill Elementary School. She changed careers upon moving to California and went into banking," Hoogasian said.

"It was because of the scholarships I received from the Alumni Association that I was able to pursue my education," Kieferdorf said. "Although I didn't continue teaching, my education at RIC helped me become a better educated, more developed person capable of dealing with Southern California's expanding business world. Today, I support the RIC Annual Fund because I

## Scholarship

Continued from page 1

East High School, he studied physical therapy for two years at medical school before deciding that career was not for him.

He came to RIC, majoring in graphic design, and would like to follow through on this after graduation with a job in a Boston ad agency.

He is active with the RIC Art Club and maintains a near-perfect academic average while working 40 to 45 hours a week as a bartender at Papa Razzi in Garden City.

## Study program in Italy established

A study program in Florence, Italy, during the first Rhode Island College summer session (May 29-June 29) will offer courses in Italian for all levels and certification of teachers as well as specialized courses for which the knowledge of Italian is not required.

These courses are art history, contemporary Italian history and cinema, history of opera, the language of the Libretti, diction, the language of business and trade, fashion, tourism, medicine, architecture and law and Italian cuisine and wines.

The program, established by Santina Fortunato, assistant professor of Italian, is open to students and faculty, and will be held at the Istituto Italiano di Cultura in the historic center of Florence. Its credits are recognized by American colleges, says Fortunato.

A member of the Department of Modern Languages will accompany the students and be available for them during their stay in Florence.

For more information, call 401-456-8029 or email to [sfortunato@ric.edu](mailto:sfortunato@ric.edu).



# Two faculty members going to Brazil in Fulbright Teacher Exchange

by George LaTour  
What's News Associate Editor

**G**ale Goodwin Gomez, who holds a joint appointment as associate professor in anthropology and educational studies, and Willis E. Poole, assistant professor of educational studies, will go to Brazil in July as part of a Fulbright Teacher Exchange.

Two faculty members from Brazil — Gilcelia Mendes and Vladia Borges — arrived at Rhode Island College March 18 and will remain here until May 4 in the teacher exchange program.

All of the work of the faculty members will involve training teachers in a second or foreign language.

Goodwin Gomez, who had lived in the capitol city of Brasilia from

1982-85, will be going to Bahia and the Federal University of Feira de Santana; Poole to Ceara and the Federal University of Ceara. They will be training teachers to teach English

and exchanging ideas about teacher training and different cultures.

Their Brazilian counterparts here "will participate in our Teaching English as a Second Language program," says Goodwin Gomez. In addition, they will be giving guest lectures in classes throughout the College on Brazilian culture and educational system, and will be talking in various public schools in



GALE GOODWIN GOMEZ

the state.

"For them, it is a chance to get to know American culture and perfect their English," says Goodwin Gomez, who points out that both Brazilian faculty members have been here before.



WILLIS E. POOLE

The Fulbright Teacher Exchange program is federally funded by Congress. It provides tickets for travel to the faculty members and a living allowance only.

"Basically, we're donating our time," says Poole.

The faculty members from both countries will be staying in private homes as guests of other on-site faculty.

# Writing Project spring, summer programs focus on exploring literacy

Rhode Island Writing Project is offering three teacher institutes and three young writers programs at Rhode Island College this spring and summer.

The Summer Invitational Institute on Writing and Critical Literacy is back for its 15th year. The Institute is a unified research group and writer's community exploring applied and theoretical issues in the teaching of writing and critical literacy.

This program, for teachers of all areas and levels, will meet at the Forman Center from 8:30 a.m. to 1 p.m., four days a week, starting June 28 and ending July 27. The Institute carries six continuing education graduate credits for a cost of \$400.

The Advanced Level Summer Institute at a site to be announced is being remodeled for the new millennium. The ninth annual Advanced Level Summer Institute will focus on planning for change in the classroom. To be led by Writing Project teacher consultants Pamela Fracareta and

Margaret LeMay, this 10-day program is planned for the second and third week of July. The Advanced Institute carries three graduate credits at a cost of \$200.

Due to the success of the first Literature Institute for Teachers, the program will be offered again this summer.

Directed by Marjorie Roemer, RIC professor of English and director of writing and Rhode Island Writing Project director, and Don Roemer, a high school English teacher in Massachusetts, this program models an interactive classroom where reading and writing are mutually supportive and reading is a collaborative activity.

The Literature Institute will meet in the Forman Center from 8:30 a.m. to 1 p.m. for four days a week during the third and fourth weeks of July. The Institute carries three credits. Cost is \$200.

Three Summer Programs for Young Writers are being offered. The Young Writer's Programs at RIC are part of the National Writing Project's network of Youth

Writing Projects offering students an opportunity to learn about the craft of writing by actively participating in all aspects of the writing process. Tuition for the seventh through ninth, fourth through sixth, or first through third grade programs is \$100 for 10 days. The Summer Program for Young Writers will take place at the Henry Barnard School from July 10 to 21.

For registration or information on any spring or summer programs, contact the Rhode Island Writing Project office at 401-456-8668.

The Rhode Island Writing Project is one of 161 National Writing Project sites around the country where teachers teaching teachers is strengthening literacy instruction throughout the nation.

Roemer, the Rhode Island project director, says, "The Writing Project has been widely hailed as the best professional development for teachers there is."

The National Writing Project has served over two million teachers and administrators since 1973.

# Gillespie presents keynote at Diversity Symposium April 12

Continued from page 1

erous support and involvement of these partners in this year's event. These partnerships strengthen the program and help the College extend its reach into the community for this timely and thought-provoking program," said College President John Nazarian. "The willingness of these partners to commit their time and resources to this program speaks volumes about their dedication to the Rhode Island community and to encouraging a dialogue about topics that have an impact on all Rhode Islanders."

The presentation will be followed by three concurrent workshops:

- "A Fork in the Road: When Violence Divides Us," presented by Leonard Perry, associate dean of student life, Brown University;
- "The Corporate World: Responding to Issues of Diversity

in the Workplace," presented by Carol J. Young, deputy executive editor, *The Providence Journal*;

- "The Academy and the Community: Working Together to Address Issues of Racism and Sexism," co-presented by Deborah DeBare, executive director; Rhode Island Coalition Against Domestic Violence; and Maureen Reddy, professor of English and Women's Studies at RIC.

Gillespie has dedicated her life to struggle for social reform. As the editor-in-chief of *Essence* magazine from 1971 to 1980, Gillespie helped transform the then fledgling publication into one of the fastest-growing women's magazines in the United States, increasing readership from 50,000 to over two mil-

lion. During her tenure, the publication won the National Magazine Award, the magazine publishing industry's most prestigious honor and she was named "One of the Fifty Faces for America's Future" by *Time* magazine.

In 1980, when she left *Essence*, Gillespie became a consultant, lecturer and writer and began her association with *Ms.* magazine as a contributing editor. She has been a columnist for the magazine as well as serving as the executive director.

For more information, contact the Dialogue on Diversity Committee co-chairs Carol Shelton, professor of nursing, at 401-456-9641; Joe Costa, director of student support services, at 401-456-8237; or Amritjit Singh, professor of English at 401-456-8660.



What's News

## Teacher Job Fair set for April 15

The Rhode Island Consortium for Educators Sixth Annual Teacher Job Fair will be held on Saturday, April 15, at the Warwick campus of the Community College of Rhode Island. There may be some slots for participants available for RIC alumni who are certified to teach. Pre-registration is required. Check the consortium's website at <http://career.uri.edu/Rice/riceprep.html> or call the Career Development Center at 401-456-8032 for more information.

## Celebrate 'Reading Week 2000' with HBS

The College community is invited to celebrate "Reading Week 2000" with the faculty and children of Henry Barnard School April 3-7. The theme for this year is "Looking Toward the Millennium, One Giant Leap for Literacy!" Individuals are invited to read a book to a group of children. To sign up or for more information, please contact Mary Foye, professor at HBS, at 401-456-8153 or e-mail [mfoye@ric.edu](mailto:mfoye@ric.edu). Readers should consider the following questions. What day and time will be convenient for you to come to Henry Barnard? Would you like to bring your own book or have one selected for you? Do you have a grade level preference?

## Spanish Theatre of RIC

It is spring and time for the annual performance of the Spanish Theatre of RIC (STRIC). STRIC, in its 20th year, will present *Rosaura a las diez (Rosaura at Ten O'clock)*, written by renowned Argentine writer Marco Denevi. *Rosaura* will be presented on the following dates: Thursday, April 27, at 9 a.m. in the auditorium of Gage Hall and Saturday, April 29, at 8 p.m., in Craig-Lee 141. Tickets are \$4 in advance and \$5 at the door. For further information, call 401-456-8029.

## Ethics and Etiquette

There will be a panel discussion titled "Ethics and Etiquette in Student-Run Media" on Wednesday, March 29, between 12:30-2 p.m. in the Student Union Ballroom. The event is sponsored by Student Community Government, Inc., WXIN, the *Anchor*. For more information, contact William Ebeling in Student Community Government, Inc. at 401-456-8088.



# Asian students celebrate cultural diversity

"A Bridge Between Two Worlds" was the theme of the fourth annual Culture Show presented by the Asian Students Association (ASA) March 11 in the Student Union ballroom. The highly colorful affair included exotically costumed folk dancers, a martial arts demonstration, a fashion show and a banquet of ethnic delicacies. These two pages offer a glimpse of this festive event.



**MISTRESS AND MASTER OF CEREMONIES** Srey Som (left) and Kam San, public relations officer and president of the Asian Students Association respectively, announce each performance.



**CAMBODIAN DANCER** Sara Kin, of the Cambodian Youth Group of Fall River performs a traditional dance.



**MARTIAL ARTISTS** Paul Graves '69 (left) and Riddel Roper demonstrate the sport of Japanese fencing, called Kendo. Both are members of the RI Shinbukan Kendo Dojo in East Providence.



**FAN DANCE:** Members of the Providence-based group, Sparkle, demonstrate a traditional Hmong fan dance.

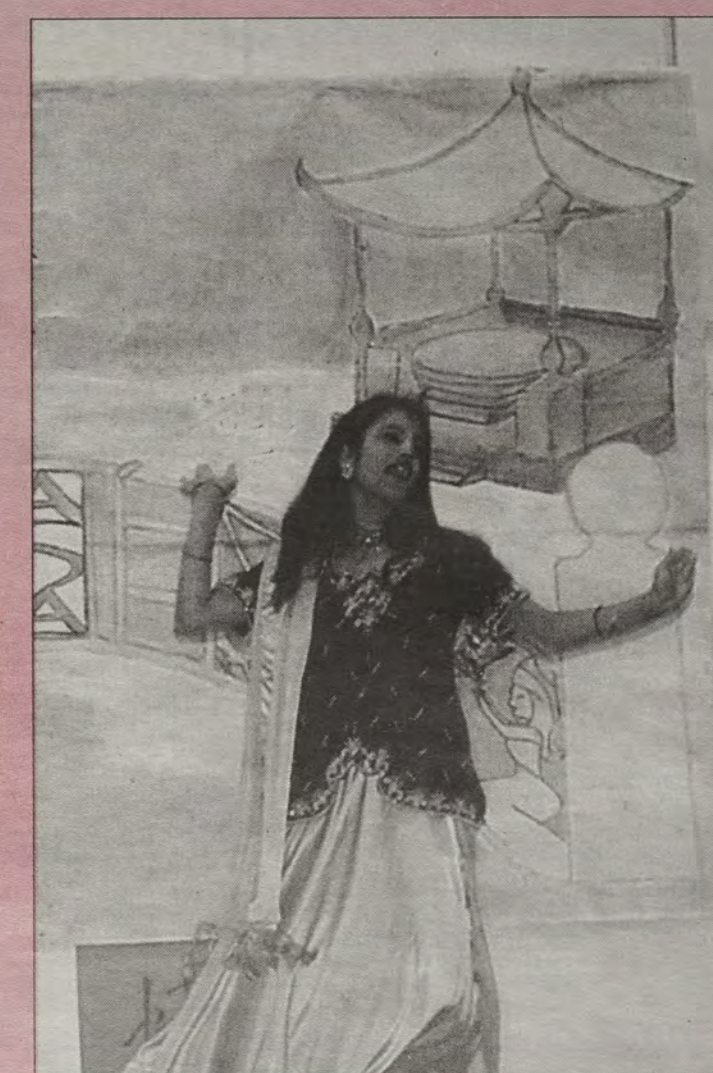


**HMONG SINGER** and RIC sophomore Lila Kue sings a traditional song.

Photos and text by  
Gordon E. Rowley



**INDONESIAN FASHIONS:** Sophomore Cheryl Sadeli, secretary of the ASA, models a "kebaya," while senior Alex Franco wears a batik-dyed shirt during the fashion show.



**INDIAN DANCER** Maulika Patel, a RIC junior, performs a dance entitled "Mhare Hiwda Mein."



## Alumni awards

Continued from page 1

thoughtful, and generous person. Simply put, she is one of our best." A graduate of Connecticut College, she holds an M.L.S. from Syracuse University. The Alumni Association concurs with Olsen and proudly awards Marlene the 2000 Alumni Faculty Award.

### Anthony O. Carlino '78, Alumni Staff Award

Supervisor, Audio Visual Department

According to the many faculty and staff members who rely on his assistance and availability, Tony is always reliable, knowledgeable, and affable. A graduate of the College, with a masters in history, Tony is also an adjunct history professor. He is a role model to his work study students and an active member of the College staff, serving as staff representative to student community government and a divisional representative in the professional staff association. The Alumni Association acknowledges all of his contributions by awarding Tony the 2000 Alumni Staff Award.

### Sara W. Weiss '85, Alumni Service Award

Peer Advisor for Students with Disabilities, Rhode Island College

Sara has worked in the Student Life Office at the College as a Peer Advisor since 1985. Her assistance ranges from academic and personal counseling to advocating for students with disabilities. Her work also includes providing information to the College community about the rights of students and the obligations of the institution relative to the Civil Rights Act and the Americans with Disabilities Act. She gives of herself and her time unselfishly.

The impact of her efforts is substantial for the 200 plus persons with disabilities registered with the Student Life Office. She has served on the State Rehabilitation Advisory Council, the board of directors of Meeting Street Center, the Rhode Island Developmental Disabilities Council, and the League of Women Voters of Newport County. The Alumni Association is proud to bestow the Alumni Service Award on Sara Weiss.

### Stephen J. Anderson '72 Charles B. Willard Achievement Award

Teacher, West Greenwich School Department & State Representative

Steve's work, both in education and in the community, reflects highly on the caliber of a Rhode Island College education. As a social studies teacher, he has had the yearbook dedicated to him twice by a vote of the students. As a part of his school's improvement team, he has coordinated its professional development plan, brought standards-based training to the school and arranged graduate course work in support of the improvement efforts.

In his role as a state legislator, Steve has sought and won legislative funding for National Board Certification for Professional Teaching Standards in Rhode Island, for *Once Upon a Time...* a reading program for pre-schoolers, and for the Rhode Island Geographic Alliance. The *Once Upon a Time* program was an innovative idea that Steve initiated to level the playing field for children as they enter kindergarten. Steve worked with the College, and recruited RIC students in the education program to volunteer, to read, and to conduct literacy activities with children in day-care centers. It continues to grow due to Steve's vision.

The Alumni Association is proud to recognize Steve's accomplishments as a classroom teacher, and as a visionary leader in our community working to improve the lives of students of all ages.

## 2000 Alumni Award Honor Recipients

All Honor Roll recipients are graduates of the College, and have been out of RIC for at least five years, recognized for their achievements in their chosen field and have earned the distinction as role models whose successes demonstrate the value of a Rhode Island College degree.

A photograph and background information on each winner is mounted, framed, and displayed in the Board of Governors Conference Room in Roberts Hall for one year and then are sent to the respective departments for permanent display.

### Accounting/CIS:

- James A. Troiano '94**
- Partner, accounting solutions LLC, Attleboro, Mass.
  - Certified Public Accountant
  - Owner, technology consulting business
  - Panelist for Center for Management and Technology Alumni Day

### Anthropology: Margaret Dooley '76

- Development Director, Heritage Harbor Museum
- Past President and Volunteer of Year, Leukemia and Lymphoma Society, Rhode Island Chapter
- Leadership Rhode Island, 1998 Sigma Class
- Founder and Past President, RI Tennis Players Association, now USTA/NE/RI

### Art: Mark Holmes '82

- Vice President, Programming & Content Development, *National Geographic*, Washington, D.C.
- Recipient of more than 400 awards
- CODIE Award winner for best www site.

### Bachelor of General Studies:

- Ronald Battista '88**
- President, Blue Cross/Blue Shield of Rhode Island

### Biology:

- Nilfa Encarnacion, D.M.D '93**
- Pediatric Dentist, Andover, Mass.
  - D.M.D., Tufts University
  - Certificate in Pediatric Dentistry, University of Medicine & Dentistry of New Jersey

### Career Technical Education:

- Stephen J. Propatier '75**
- Principal Director, East Providence Career and Technical Center
  - M.Ed., Rhode Island College
  - President, East Providence/Seekonk Rotary Club
  - Rotarian of the Year 1997-98
  - Certificate of Appreciation from VICA for 10 years of dedicated service

### Communications:

- Stephen E. DelPico '80**
- Local Sales Manager, WJAR, NBC 10
  - Member of the Rhode Island Advertising Club, New England Broadcasters Association
  - Board of Director of ALSA (Lou Gehrig's disease) of Rhode Island

### Computer Science:

- David F. Ouellette '86**
- Principal Software Engineer, Data Systems, EMC 2/Clarion, Southboro, Mass.
  - Designed data structure and algorithms for OAS
  - Received the Director's Award 1997
  - Member of EMC/Clarion's Fiber Channel Development Team

### Dance: Liam Clancy '95

- Independent Artist, Dance and Theatre Co., NYC
- Recipient of Ridgway F. Shinn Study Abroad Scholarship, University of London
- Full Scholarship recipient - Harvard Summer Dance Program

### Economics/Finance: Ronda Williams Warrenner '89

- Financial Advisor, CFP, Legg Mason Wood Walker, Inc.
- Certified Financial Planner, 1992
- Panelist for Center for Management and Technology Alumni Day
- RIC Foundation Trustee

### Elementary Education:

- Kathleen Swann '79**
- Director of Professional Development and Leadership, Coventry Public Schools
  - Rhode Island Facilitator for National Board for Professional Teaching Standards Certification, Rhode Island Department of Education
  - Distinguished Educator of the Year, Coventry Public Schools, 1995
  - Delegate to People's Republic of China, Children's Literature Delegation
  - Appointed to Governor's Task Force on Teacher Preparation, 1999
  - Graduate of Leadership Rhode Island, 1999 Tau Class

### English: Paula Milano '70 and

- Anthony Milano '71**  
*Paula Milano '70*
- Title I Coordinator, Rhode Island Department of Education

- M.Ed., Rhode Island College
- Taught English for 26 years in Providence
- Member of North Providence Business and Professional Women
- Member of RI and National Councils for Teachers of English

### Anthony Milano '71

- Planner and first Principal, Feinstein High School, Providence
- M.Ed., Rhode Island College
- Taught English in Alternate Learning Project, Providence
- Member of Rhode Island Association of Secondary Principals

### History: Kenneth S. Carlson '94

- Reference Archivist, Rhode Island State Archives
- Co-authored *African-Americans and the Civil War, Rhode Island Legacy Series, Fighting to be American: Rhode Islanders in the Civil War*
- Member of the New England Archivists

### Industrial Technology:

- Kathleen Carneval '94**
- Senior Quality Assurance Analyst, A.T. Cross
  - M.S., Rhode Island College
  - Volunteer presenter for RACE's Performance Excellence Series
  - Panelist for Center for Management and Technology Alumni Day

### Management: Mick Tedesco '87

- Vice President, Operation, Pawtucket Red Sox
- Worked his way up from concessions to merchandising and souvenir stands to director of stadium operations
- Oversees all operations of the stadium

### Marketing: Paula L. Mottshaw '95

- Health Care Analyst, Lifespan
- Awarded membership in Alpha Mu Alpha
- *Who's Who Among American Colleges and Universities*
- Panelist for Center for Management and Technology Alumni Day

### Mathematics: Carolyn T. O'Keefe '63

- Mathematics Department Chair, Bishop Hendricken High School (retired)
- M.A.T., Rhode Island College
- Rhode Island Math Teachers Association Board Member, 1990-1997
- Owner and Teacher, PSAT/SAT Test-Prep School, 1990-1998

### Music: Mary Phillips '86 and Lori Phillips '86

- Mary Phillips '86*
- Performing Artist - Concert and Opera Singer
  - M.M., Yale University
  - Metropolitan Opera Eastern Regional Winner
  - Kennedy Center, National Acting Award
  - She has performed with many opera companies, some are: Seattle Opera, San Francisco Opera, NY Philharmonic, American Symphony Orchestra

### Lori Phillips '86

- Performing Artist - Concert and Opera Singer
- Described by *The New York Times* as the "formidable soprano" for her role as Patience in the opera *Patience & Sarah*
- Appearances with New West Symphony at Tanglewood, Sarasota Opera, Toledo Opera, Opera Orchestra of New York, Utah Opera
- Will be performing in Amsterdam this spring

### Nursing: Mary Beth Mancini '76

- Senior Vice President, Parkland Health and Hospital System, Dallas
- M.S.N.; completing Ph.D. in Public Urban Affairs
- Inducted into American Academy of Nursing, 1994
- National League for Nursing Centennial Leadership Award 1993; Johnson & Johnson Wharton Fellow in Management, 1987

### Philosophy: Robert Houghtaling '78

- Director, East Greenwich Drug Prevention Program
- M.Ed., Providence College
- Received the Bramley Award for excellence in substance abuse prevention

- Recognized by Gov. Bruce Sundlun and *USA Today* for drug prevention work

### Physical Education:

- Christopher Perron '88**
- Physical Education Teacher, North Attleboro School Department
  - *Sun Chronicle* Coach of the Year, Basketball and Boy's Track
  - Serves as a cooperating teacher
  - Recognized by department as a role model for students and as a reflective and dedicated teacher

### Physical Sciences:

- Michael D. Seltzer '78**
- Senior Level Research Chemist, Naval Air Warfare Center Weapons Division, China Lake, California
  - Ph.D., University of Connecticut
  - Navy Meritorious Civilian Service Award
  - Federal Laboratories Consortium Award

### Political Science/Public

- Administration: Gordon Fox '85**
- State Representative and Attorney
  - J.D., Northeastern Law School
  - Elected to his first term in 1992
  - Chair, Finance Subcommittee on General Government
  - Served on Board of Governors for Higher Education
  - Graduate of Leadership Rhode Island, 1995 Omicron Class

### Psychology: Talia Ben-Zeev '91

- Assistant Professor, Cognitive Psychology, Williams College
- M.S., M.Ph., Ph.D., Yale University
- American Psychological Association's Dissertation Research Award, 1996
- Widely published in field of cognitive psychology
- Prior to teaching at Williams, assistant professor at Brown University

### Secondary Education:

- Joseph Mollica '72**
- Principal, Esek Hopkins Middle School, Providence
  - M.Ed., Providence College
  - State Teacher of the Year Nominee, 1980
  - Assistant Principal, Roger Williams Middle School, 1994-1996

### Social Work:

- Ellen Crosby O'Hara '77**
- Clinical Social Worker and Member, Cranston City Council
  - M.S.W., Rhode Island College
  - Community Police Service Award
  - Field Supervisor for School of Social Work

### Sociology:

- Lelia Lomba DeAndrade '87**
- Assistant Professor of Sociology and Africana Studies, Bowdoin College
  - M.A. and Ph.D., Syracuse University
  - Post Doctoral Fellow, DuBois Institute for Afro-American Research
  - Syracuse University Dissertation Fellowship

### Special Education: Mary Carter '69

- Executive Director of Pupil Personnel Services, Cranston Public Schools
- M.Ed., Rhode Island College
- Citation from Cranston Community Action Program, 1999
- Distinguished Service Award, Mental Health Services of Cranston, Johnston and Northwestern Rhode Island 1991

### Technology Education:

- Ernest Marcure '68**
- Adjunct Professor and Supervisor of Student Teaching, Rhode Island College
  - M.A., University of Rhode Island; M.Ed., Rhode Island College
  - State Technology Teacher of the Year, 1986, 1994
  - Member of the Scituate School Committee
  - Fine Arts Chairperson, Coventry High School

### Theatre: Steven B. Libman '81

- Managing Director, Pittsburgh Ballet Theatre
- Board of Trustees, Dance USA
- Board of Trustees, AGMA Trust Fund
- Dance discipline panelist, National Endowment for the Arts
- Member of Advisory Committee for Masters Management Program, Carnegie Mellon University



# Athletics

## From the athletic director's desk



**Donald E. Tencher**  
Director,  
Intercollegiate  
Athletics, Intramurals  
and Recreation

•Congratulations to student-athlete **Jessica Robitaille**, a goal keeper on the women's soccer team, who has been selected by the **National Collegiate Athletic Association** to attend the **NCAA's Foundation Leadership Conference** May 28 through June 1 at Disney's Coronado Springs Resort in Florida. Jess will be one of about 350 student-athletes from across the country attending the conference, which deals with a variety of leadership issues facing today's student-athletes.

•Congratulations also to gymnasts **Sajdah Ahmad** and **Elise Arruda** for their successful performances at the Eastern College Athletic Conference (ECAC) Division III earlier this month. (See story on this page for details.)

•The department will host its fourth annual Sports and Celebrity Auction on Tuesday, May 2 at the Marriott in Providence. The auction will feature all kinds of memorabilia as well as trips to sporting events and gift certificates to restaurants. All of the proceeds benefit student-athlete development. Tickets are \$10 and each attendee will receive a free T-shirt and refreshments. For more information or to purchase tickets, contact the department at 401-456-8007.

•As a member of the NCAA Wrestling Committee, I had the fortune of attending the Division I Championship at the Kiel Arena in St. Louis and it was phenomenal. More than 95,000 people attended this three-day event. The effort put forth by these student-athletes was just amazing.

•The Rhode Island College Summer Sports Camps are just around the corner. The camps will take place daily from the last week in June through the middle of August. For more information or for an application, contact the department at 401-456-8007.

•The men's tennis as well as the men's and women's outdoor track team started practicing recently. The baseball, softball and golf teams just returned from playing down South. The seasons have begun so get out and support these outstanding student-athletes and attend an event.

•Rhode Island College recently hosted several high school interscholastic championships including individual and team gymnastics; the girl's basketball quarter and semifinals; the boy's state wrestling championship and the Coaches Interscholastic Boy's basketball All-Star Game. It was a great few weeks of interscholastic athletic events at the College and the exposure is wonderful. Over 10,000 potential students, their parents and fans attended these events.

## 2000 Spring Sports Preview

by Scott Gibbons  
Sports Information Director

With the winter sports season all but over, the attention shifts to the outdoors and the spring sports season.

The RIC baseball team enters the first season of the new millennium with several new faces around the diamond. "There is an influx of new talent on the team this year. The key will be our pitching staff and how well they perform over the course of the season," says Head Coach Scott Perry.

Righty **Bill Fields** will anchor the staff as the club's number one starter. **Luke Hardiman** is one of the top closers in the Little East Conference. Offensively, the club has several of its key performers back. Second baseman **Andy Barron**, leftfielder **Paul Pimentel** and catcher **Dan Williams** are experienced veterans. Junior transfers from the Community College of Rhode Island **Mike Henderson** and **Scott Virgulak**, along with freshman shortstop **Minh Pham**, are key newcomers to the team.

The RIC softball team is faced with a new challenge in 2000, maintaining the high standard of excellence the team created last spring when they set a school record for wins in a season and qualified for the ECAC post-season tournament for the first time in the program's history.

Head Coach **Maria Morin** has all of the key component's from last year's squad back in the lineup this spring. "We finally broke out last season," Morin says. "The team got a taste of the post-season and they are ready to get back there again."

**Lea Wiggins**, the club's ace, and **Beth Covill** will handle the pitching duties again this spring. Shortstop **Jen Cook** and catcher **Jen Sabatelli** are returning All-Conference players



**LEA WIGGINS**

at their respective positions. Newcomers **Katie Costigan**, **Michele Fanelli** and **Crissy McCullah** are each expected to make sizable contributions to the squad.

Head Coach **Dick Ernst's** men's tennis team is hungry for another shot at the Little East Conference title. After finishing a mere 4 1/2 points behind LEC champion **UMASS-Dartmouth** in 1999, the Anchormen have the entire team returning this spring. "I expect this team to challenge for the Little East Championship once again this season," Ernst says. "We were very close last spring and this is a veteran team that knows how to win."

**Pat Prendergast**, 1999 team MVP, was the LEC Champion at number two singles and combined with **Joe Testa** to win the number one doubles flight a year ago. The senior will com-

pete at the same positions in '00. **Testa**, who narrowly missed winning the number one singles flight at the LEC Championships last spring, proved he has the ability to win the title. **Paul Perry** and **Keith Elliott** are returning veterans who should also do well this year.

The men's and women's outdoor track and field squad's are also eager to begin the season. Women's Head Coach **Matt Hird's** team, fresh off a Little East Conference title in the indoor season, will be without the services of **Crissy McCullah** and **Katie Costigan** who traded in their sneakers for cleats on the softball diamond. However, All-New England high jumper **Melinda Roczynski** and a host of All-Alliance/Little East tracksters will have their eyes set on repeating as LEC champs once again this spring. "We have been very successful, dating back to last spring, and more recently this past indoor season," Hird says. "Both the Little East and the MASCAC teams are steadily improving and we will have to work hard to contend for the Alliance Championship."

Men's Head Coach **Dick Hoppman** is hoping the Anchormen continue with the progress they made during the 1999-00 indoor campaign. "We have a dedicated group of individuals on the team," Hoppman says. "They continue to progress in their respective events with each passing meet." **Chris Puleo** was named All-Alliance/Little East in the 400 meters this past winter. **Dan Fero** will give the team an added dimension with his experience in the steeplechase event.

Finally, the year 2000 marks the first season for the Rhode Island College men's golf team. Head Coach **Jerry Morgan** has his squad moving in the right direction and they will compete against several regional opponents this spring.

### Ahmad and Arruda star at ECAC championships

RIC gymnasts **Sajdah Ahmad** and **Elise Arruda** each had outstanding performances at the Eastern College Athletic Conference (ECAC) Division III Championships, held at MIT, on March 11. **Ahmad**, who is a freshman, was the ECAC Champion on vault, placing first overall out of 48 competitors with a score of 9.550. The New London, Conn. native was also the ECAC Champion in the all-around, placing first out of 25 competitors with a combined point total of 35.481.

**Arruda**, a sophomore from Portsmouth, placed sixth out of 48 competitors on beam with a score of 9.100 on that event.

RIC placed fifth out of eight teams with a score of 139.875. While the rest of the team is done for the year, **Ahmad** and **Arruda** will both go on to compete at the 2000 National Collegiate Gymnastics Association (NCGA) Championships, held at Springfield College. (The competition took place after press time, on March 24 and 25.)

### Fall sports MVPs named at banquet

The Rhode Island College Department of Intercollegiate Athletics, Intramurals and Recreation held its annual Fall Banquet at RIC's Donovan Dining Center on Feb. 23 to honor the student-athletes who participate in varsity fall athletics. Each sport presented their Most Valuable Player Awards.

**Soccer: Men's, Jeff Lavigne; Women's, Sherri Matheu**  
**Cross country: Men's, Nick Alfred; Women's, Alysia Blinn**  
**Women's tennis: Trisha Haworth**    **Women's volleyball: Kim Lebrun**



**BANQUET PRESENTATION:** **Joan Monroe**, human resources manager from Sears in Warwick, presents the Rhode Island College women's tennis team with the Sears Collegiate Championship Trophy for winning the Little East Conference title this October. **Monroe** and team members are (l to r) front row, **Erica DiNuccio**, **Lisa Vinacco**; back row, **Courtney Chauvette**, **Carminda Rocha**, **Trisha Haworth**, **Monroe** and **Theresa Gargaro**.



RIC Emerging Artist Series presents —

## Canadian violinist Catherine Manoukian in concert April 9

by George LaTour  
What's News Associate Editor

**E**ighteen-year-old Canadian violin prodigy Catherine Manoukian opens the new Emerging Artist Series at Rhode Island College this season with a performance Sunday, April 9, at 3 p.m. in Gage Hall auditorium.

The classical portion of the program will consist of Brahms' Violin Sonata, No. 2 in A Major; Debussy's Violin Sonata; Baghdassarian's Rhapsody; Babajanian's Elegie; Chopin's Nocturne in C-sharp minor and Vieuxtemps' Yankee Doodle Variations.

Stephen Martorella will serve as accompanist.

The Toronto-based violinist has been appearing in recent years on major stages throughout North America, Europe and Asia to critical acclaim.

Born to a musical family — her mother, a violinist from Japan and her father, a violinist from Armenia — she began her studies on the violin with her father, making her first stage appearance a few months later at age 4. At 12, she won overall first prize at the 1994 Canadian Music Competition while obtaining the highest marks in all categories.

Following this standing, she was invited to perform Paganini's Violin Concerto No. 1 with the Vancouver



Symphony Orchestra at a gala concert.

Since then, Manoukian has appeared as soloist with many major Canadian orchestras as well as with numerous foreign ones. She has a repertory of 40 concert pieces, 19 concertos and 17 sonatas.

As a recitalist, she has performed in New York, Los Angeles, Boston, Paris, Tokyo and Toronto among other sites.

Among her performances was one

as invited guest at a ceremony honoring Seiji Ozawa for his 25 year's work with the Boston Symphony.

She has performed on radio, including for the Voice of America, and television, including Bravo TV's "Artist of the Day" program.

She has recorded two CDs—"Elegies and Rhapsodies" and "Chopin on Violin," released consecutively on Marquis Classics, and has recorded live for CBC broadcast, including the Dvorak Violin Concerto with Mario Bernardi and the CBC Vancouver Symphony Orchestra.

The 1999-2000 season includes a fourth-time return tour of Japan as well as a three-night appearance with the Toronto Symphony. In the meantime, she continues her musical studies with the world-renowned violin pedagogue Dorothy Delay of New York and as a part-time scholarship student of human behavior at the University of Toronto.

Tickets are \$16 with discounts for senior citizens and students and may be purchased in advance by telephone via VISA or Mastercard by calling 456-8194 from 10 a.m. to 4 p.m. daily or in-person at the Roberts Hall box office.

## Tenor, pianist share program in Chamber Series

Tenor Richard J. Monroe and pianist-composer Stephen James will share performances in the Wednesday, March 29, Rhode Island College Chamber Music Series in the Auditorium in Roberts Hall at 1 p.m.

The program will consist of Gabriel Faure's En Priere and Nell, James' Sonata, and R. Vaughan William's Five Mystical Songs.

The recital is free and open to the public.

Monroe has been hailed by the *Boston Globe* as "a remarkably gifted young tenor." Recent performances included Handel's Messiah with the Worcester Chorus and Orchestra; Mozart's Requiem with the Assabet Valley Mastersingers, and Haydn's Creation with the Assumption College Chorale and Community Chorus.

The winner of the 1997 Boston Bel Canto Opera Competition, his recent operatic performances include leading roles in productions of *Rigoletto*, *Die Fledermaus*, *Tosca*, *Carmen*, *The Merry Wives of Windsor* and *The Elixir of Love*.

Monroe serves as managing director of the Salisbury Lyric Opera and is a teacher and choral director at St. John's High School in Shrewsbury, Mass.

James has performed for the Tanglewood Music Center Chamber Series, the American Repertory Theatre, the Artists Foundation of Boston, the Omnibus Series at Boston University and other concert series in New England.

He completed his doctoral degree in composition at BU where he received the graduate composition prize. Other recognition includes the Malloy Miller Composition Award and an award for continuing musical excellence.

He was a Crofts Fellow in Composition at the Tanglewood Music Center and a member of the Center for Compositional Study at the Aspen Music Festival. Premieres of his works have been performed by the Pro Arte Chamber Orchestra of Boston and the Atlantic Brass Quintet.

James has taught composition, piano performance, music theory and related course at Amherst College, BU, the University of Massachusetts at Dartmouth and Bridgewater and Worcester State colleges.

For more information, call John Pellegrino, series coordinator, at 401-456-9883.



STEPHEN JAMES

## Multi-dimensional artist Terry Allen to perform and exhibit art in April

"Works on Paper" is the title of the exhibit of drawings and prints by multi-dimensional artist Terry Allen which runs in Rhode Island College's Bannister Gallery April 6-29.

Preceding the opening of the exhibit on April 6, Allen will perform some of his original musical creations on piano at 7 p.m. in Gage Hall auditorium. He also will hold an open discussion exploring some of the underlying themes of many of his projects in all media. A reception will follow.

Sponsored by the Artists Co-op of RIC, the performance and exhibit are free and open to the public.

"Allen is a creative phenomenon," says Dennis O'Malley, gallery director, who is coordinating the show with Bryan Steinberg of the art department.

"A multi-dimensional artist, he is renowned for his incisive mind and for his effortless command and outrageous combination of disparate genres and media," says O'Malley.

Born in Lubbock, Texas, he stud-



**STUDY FOR BUDDHA CAGE (Catcher) pastel on paper 30" x 22" by Terry Allen.**

ied art at the Chouinard Art Institute in Los Angeles; received three National Endowment for the

Arts fellowships as well as a Guggenheim Fellowship, and was recently inducted into the Buddy Holly Walk of Fame.

Allen's visual art work is included in museum collections ranging from New York's Museum of Modern Art and the Metropolitan Museum of Art to the Museum of Contemporary Art in Los Angeles and ELAC—Museum Saint Pierre in Lyon, France.

In addition to releasing 11 music CDs, Allen co-wrote the musical *Pioneer* with his wife, Jo Harvey Allen, and *Rende Eckert* which was performed at the 1990 Spoleto Festival USA.

His set and musical score for the Margaret Jenkins Dance co-production of *Pedal Steal* won Isadora Duncan and Bessie awards.

Regular gallery hours are Tuesday through Saturday, 11 a.m. to 4 p.m., and Tuesday and Thursday evenings from 6 to 9. The gallery is closed holidays. For more information, call O'Malley at 401-456-9765.

## RIC students compete in song festival

Rhode Island College was the host for the annual National Association of Teachers of Singing (NATS) Song Festival and Competition March 4 at which 50 singers from high school age to those "over 25" performed and competed.

The students came to the College for an event-filled day which included five divisions of competition with constructive comments

from the adjudicators, refreshments, an informative session on controlling and overcoming performance anxiety, and a recital of each division's first place winners.

RIC students Tina Fernandes and Wendy J'Zen placed first in Division 2 and third in Division 5, respectively.

Teresa S. Coffman, assistant professor of music and director of the RIC Chorus, and Joanne

Mouradjian, Donald and Flo St. Jean, adjunct music faculty members, were adjudicators. Donald is president of the Rhode Island chapter of NATS; Flo, vice president and clinician.

Other RIC students who participated are Amanda Howard, Kerry Walsh, William O'Neill, Christine Noel, Michelle Comeau and Elizabeth Parrillo.



RICHARD J. MONROE



RIC Theatre presents end-of-season musical —

# Broadway hit 'Once Upon a Mattress' is April 13-16

by George LaTour  
What's News Associate Editor

**O**nce Upon a Mattress, the jocular fairy-tale for adults with catchy music and clever lyrics, will be staged by Rhode Island College Theatre April 13-16 in the Auditorium in Roberts Hall.

Bill Wilson, assistant professor of theatre, will direct and choreograph this end-of-season musical with book by Jay Thompson, Marshall Barer and Dean Fuller. Music is by Mary Rodgers (daughter of famed Broadway musical composer Richard Rodgers). Lyrics are by Barer.

The farcical fable, which had a 59-week run when it was first produced in New York in 1959-60, is based on the Hans Christian Andersen story called "The Princess and the Pea," wherein a queen puts a girl through an almost-impossible series of tests to see if she is fit to be her son's bride.

One of the trickiest of the tests is whether she can sleep on a pile of 20 mattresses that have a pea beneath the one at the bottom. If the girl is so sensitive that the pea makes her uncomfortable and sleepless, that will qualify her. That will prove her royal lineage.

That girl — a princess named Winifred the Woebegone — was played by Carol Burnett in the

role that made her famous.

Brooks Atkinson of the *New York Times* wrote at the time, "It is a yarn about an overbearing queen who is trying to frustrate all the princesses who want to marry her son. The mood is gaily naive, the tempo is light and the total impression beguiling."

Laura Brittan will play the part of Winifred, the 13th princess to try passing the tests. A sort of an athletic Cinderella (she is a princess from a pretty down-and-out swampy realm), she even swims the moat to get into the castle for this try at getting Prince

Dauntless the Drab for a husband.

She has barely caught her breath from this little exertion when she announces in a song that she's "Shy." She later does an uproarious take off on "I want to go back" songs

with a number called "Swamps of Home."  
Holly Beaudry will play the queen mother who tries to stack the cards, and the pea, against Winifred because she wants to keep her sonny-boy Dauntless attached to her apron strings.

Bill O'Neill will portray the sad-sack victim of royal momism, who wishes, alas, that Mama would give him a lass, almost any lass.  
The pixyish candidate, Winifred, gets a lot of help in outwitting the schemes of the queen since the knights and

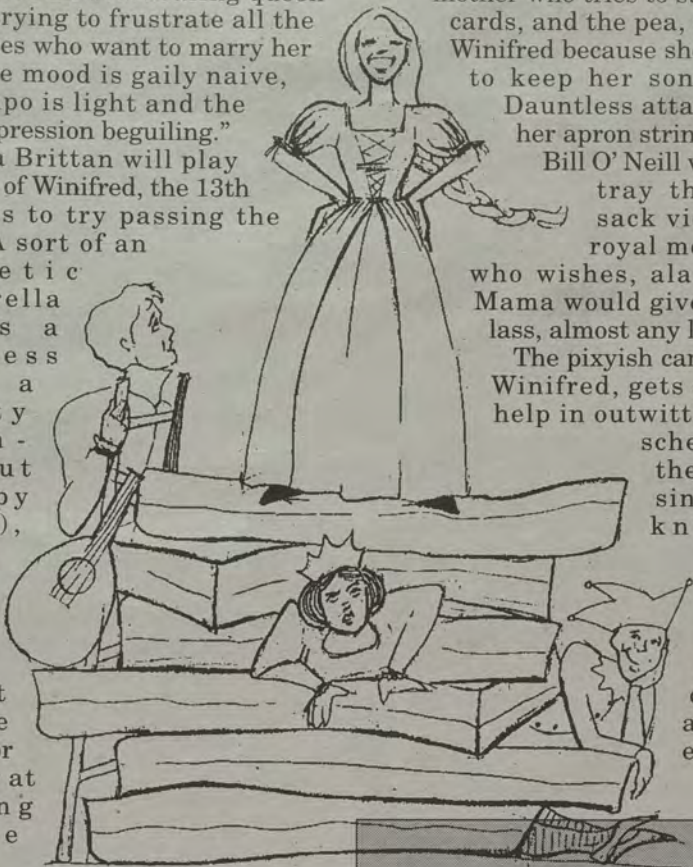
get married themselves, but are prohibited from doing so until a mate has been found for Dauntless.

Syndicated columnist Liz Smith wrote: "Don't fail to catch this! See it in all its unpretentious, sweet, charming, funny glory."

Other cast members include Beckley Andrews as the jester, Manny Barbosa as the minstrel, Dominique Doiron as Harry, Elizabeth Parillo as Larken, Michael Roderick as the wizard and Brad Verdi as Sir Studley.

Musical direction will be provided by Joseph Carvalho; set design and lighting by Chris Abernathy and John Boomer, respectively. Stage manager is Lisa Zagarella. Charlotte Burgess is costume designer.

Performances Thursday, Friday and Saturday evenings are at 8; Saturday and Sunday matinees are at 2. Reserved-seat tickets are \$15 with discounts for students and senior citizens and may be purchased in advance by phone via VISA or Mastercard by calling 401-456-8144 or at the box office.



ladies of the court are eager to

Dauntless the Drab for a husband.

She has barely caught her breath from this little exertion when she announces in a song that she's "Shy." She later does an uproarious take off on "I want to go back" songs

## Special tickets to matinee benefit Shinn Fund

Tickets to the *Once Upon a Mattress* 2 o'clock matinee Saturday, April 15, ordered through the Rhode Island College Foundation will benefit the Ridgway F. Shinn Study Abroad Fund.

Such tickets are \$25 and entitle the holders to the performance and a reception afterward in the John Nazarian Center for the Performing Arts 198 at which winners of the 2000-2001 Shinn awards will be announced.

Those who made contributions or purchased matinee tickets by April 7 are eligible to win a weekend in the Berkshires in a luxury condo with dinner for two in the Lenox House, and two tickets to the Norman Rockwell Museum. The drawing will take place at the reception.

To get matinee tickets that will benefit the Shinn Fund, write to Lynn Vinacco at the RIC Development Office, 600 Mt. Pleasant Ave., Providence, RI 02908 or call 401-456-8087. Checks should be made payable to the RIC Study Abroad Fund.

The Shinn Fund, held within the RIC Foundation, provides income to support undergraduate students in planned study outside the United States.

Established in the 1987-88 academic year by Professor Shinn through the support of many of his friends, colleagues and former students, the fund enables deserving students to experience living and studying in another culture.

Any undergraduate with one year of full-time study at RIC and in good academic standing in any field of study is eligible to apply. Grants are for a minimum of three months and a maximum of 24 months, and are of variable amounts.

## Tempest Trio in President's Music Series April 3

The Tempest Trio will perform Martinu's *Bergerettes*, Beethoven's *Trio in B-Flat Major Opus 97 ("Archduke")* and Dvorak's *Trio in F minor, Opus 65*, closing out the President's Music Series for this season at Rhode Island College.

The trio's performance will begin at 8 p.m. on Monday, April 3, in Gaige Hall auditorium. Tickets are \$19 with discounts for senior citizens and students, and may be ordered in advance by telephone via VISA or Mastercard by calling 401-456-8194 from 10 a.m. to 4 p.m. daily or in-person at the Roberts Hall box office.

Members of the trio are violinist Bayla Keyes, a founding member of the Muir String Quartet and winner of the Evian and Naumburg competitions who

performed in over 1,000 concerts on the international touring circuit;

Keyes teaches at Boston University and at several festivals, most notably the BU Tanglewood Institute and the Interlochen Chamber Music Conference.

She is now a member of Boston Music Viva, the Marblehead Chamber Players and Triple Helix.

Also, Mihae Lee, a Korean-born pianist who performed with the Korean National Symphony Orchestra at age 14 and has since appeared in solo and chamber music concerts throughout North

America, Europe and Asia, and Michael Reynolds, a cellist with the Muir String Quartet who tours the musical centers of North America and Europe annually.



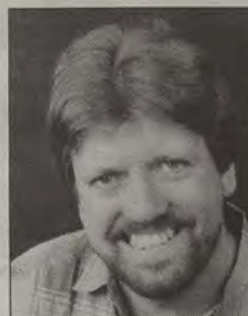
## Trinity Rep artistic director to discuss artistic process

Oskar Eustis, artistic director of the Trinity Repertory Company and director of its current production, *Meshugah*, will discuss that production as well as the nature of directing theatre in a question-and-answer session Wednesday, April 5, from 12:30 to 1:30 p.m. in Clarke Science 128.

The Rhode Island College Department of Music, Theatre and Dance is bringing in Eustis, a distinguished and influential figure

in American theatre and recipient of a RIC honorary doctorate degree last year.

Students, faculty and alumni are invited to this free event.



OSKAR EUSTIS



# RIC CALENDAR

MARCH 27 - APRIL 10, 2000

## Sundays

**10 p.m.**—Catholic Mass in the SU Ballroom. Conducted by Fr. Joseph Pescatello.

## Mondays

**10 to 11 a.m.**—Bible study will be held in Student Union 300.

## Tuesdays

**6 to 9 p.m.**—Scuba Instruction in Recreation Center Pool. Feb. 8-April 25. \$110 for RIC students. For further information, call aquatics, 456-8227.

## Wednesdays

**12:30 to 1:45 p.m.**—Catholic Student Association meets in the Chaplains' Office, SU 300.

## March 13-April 14

Food and Candy Collection for Easter. Noon perishable foods and candy for children's Easter baskets. Donations can be dropped off anytime to the Chaplains' Office, SU 300, 456-8168.

28

## Tuesday

**4 p.m.**—Rubber Stamping Workshop at in the SU 211. Materials will be provided free of charge though people are welcome to bring their own supplies. Sponsored by Office of Student Activities, 456-8034.

**5:30 to 7:30 p.m.**—Center for Management & Technology Career Fair. Student Union Ballroom. For more information, call 401-456-8009.

29

## Wednesday

**12:30-2 p.m.**—Panel discussion: "Ethics and Etiquette in Student-Run Media" In the Student Union Ballroom. The event is sponsored by Student Community Government, Inc., WXIN, the Anchor. For more information, contact William Ebeling in Student Community Government, Inc. at 401-456-8088.

**1 p.m.**—Music: Chamber Music Series. Richard Moore, tenor, and Stephen James, piano, in The Auditorium in Roberts Hall.

**2 to 3 p.m.**—Improving Self Esteem in CL 130. Moderated by Jan Park. Sponsored by the Counseling Center, 456-8034.

**4 p.m.**—Thorp Lecture. Faculty Center. Patricia Medeiros-Landurand, professor of special education, will present "If the Shoe Fits: Standards and the Diverse Learner." C. David Brell, associate professor of educational studies, will follow immediately with "Teaching as a Moral Enterprise." Reception to follow.

31

## Friday

**7 p.m.**—Young Alumni Group Night at the Providence Bruins. Tickets \$8. For more information, call 401-456-8086.

## April

3-7

## Mon.-Fri.

"Reading Week 2000" Members of the College community to read books to groups of HBS children. The theme for this year is "Looking Toward the Millennium, One Giant Leap for Literacy!" To sign up or for more information, please contact Mary Foye, professor at HBS, at 401-456-8153 or e-mail mfoye@ric.edu.

3

## Monday

**8 p.m.**—President's Music Series: Tempest Trio in Gaiage Auditorium. Reserved seating \$19.\*\*

4-5

## Tues. & Wed.

10 a.m. to 7 p.m. — Greater Providence Chamber of Commerce Business Expo. At the Rhode Island Convention Center. Stop by booth #927 — the Rhode Island College booth to register for a prize!

5

## Wednesday

**12:30 to 1:30 p.m.**—Discussion: Oskar Eustis, artistic director of the Trinity Repertory Company and director of its current production, *Meshugah*, will discuss that production as well as the nature of directing theatre in a question-and-answer session Wednesday, April 5, from in Clarke Science 128.

**4 p.m.**—Lecture: Tom Banchoff, professor of mathematics at Brown University, will speak on "Math Has Many Dimensions." In Gaiage Hall auditorium. Part of Math Awareness Month, see story, page 2.

6-29

Art: Terry Allen: Works on Paper. Opening event: Talk with Terry Allen at 7 p.m. Reception to follow in Bannister Gallery.

7

## Friday

**1 to 6 p.m.**—Rhode Island Finals of the 2000 National Geographic Bee. At various sites on the Rhode Island College campus. See story, page 3.

**6:30 p.m.**—RIC Foundation Annual Gala at the Providence Marriott. Cocktails and silent auction preview at 6:30 p.m. and dinner and dancing at 7:30 p.m. with music provided by Avenue A. Tickets are \$75 per person and black tie is optional. For tickets or to donate an item for the auction, please call Lynn Vinacco, 456-8087.

8

## Saturday

**2 to 4 p.m.**—Admissions Office Annual Spring Party. New Building. For more information, contact Irene Rupert or Debbie Suggs at 401-456-8234.

9

## Sunday

**3 p.m.**—Emerging Artist Series: Catherine Manoukian, violin, in Gaiage Hall Auditorium. Reserved seating \$16.\*\*

\*\*Admission discounts for senior citizens, faculty/staff, RIC and non-RIC students.

## Sports Events

Baseball			
Tues.	Mar. 28	Worcester State	3 p.m.
Sat.	Apr. 1	Southern Maine * (DH)	Noon
Sun.	Apr. 2	at Salve Regina	Noon
Wed.	Apr. 5	at Roger Williams	3:30 p.m.
Sat.	Apr. 8	at Keene State * (DH)	Noon
Softball			
Tues.	Mar. 28	Coast Guard	3 p.m.
Sat.	Apr. 1	Keene State * (DH)	1 p.m.
Sun.	Apr. 2	Colby (DH)	Noon
Wed.	Apr. 5	Worcester State (DH)	3 p.m.
Sat.	Apr. 8	at Southern Maine * (DH)	1 p.m.
Sun.	Apr. 9	at Salve Regina (DH)	2 p.m.
Men's Tennis			
Tues.	Mar. 28	at Clark	3 p.m.
Thurs.	Mar. 30	Salem State	3 p.m.
Tues.	Apr. 4	Bridgewater State	3 p.m.
Thurs.	Apr. 6	Johnson and Wales	3:30 p.m.
Sat.	Apr. 8	at Southern Maine *	1 p.m.
Men's Golf			
Wed.	Mar. 29	CCRI	Noon
Fri.	Mar. 31	Brandeis	Noon
Tues.	Apr. 4	at UMASS-Dartmouth	Noon
Fri.	Apr. 7	Roger Williams University	Noon
Mon.	Apr. 10	Wentworth	Noon
Men's and Women's Track and Field			
Sat.	Apr. 1	at Bridgewater State	11 a.m.
Sat.	Apr. 8	Rhode Island College Invitational	11 a.m.

Home games/meets in bold  
\* Little East Conference game

### Notice of Affirmative Action and Nondiscrimination

Rhode Island College is committed to equal opportunity and affirmative action. No student, employee, or applicant will be denied admission, employment, or access to programs and activities because of race, sex, religion, age, color, national origin, handicap/disability status, sexual orientation/preference, or veteran status. This College policy is in concert with state and federal nondiscrimination laws. Inquiries concerning the College's administration of the nondiscrimination laws should be addressed to the College director of affirmative action. Reasonable accommodation upon request.

## RIC gets down to business

Join us at the Greater Providence Chamber of Commerce Business Expo.

Tuesday, April 4  
& Wednesday, April 5  
at Booth #927.

Rhode Island  
Convention Center

Stop by to visit  
and register to win prizes.