

Ricoled

1931



Recolled

Volume III

published

by the

Class of 1931

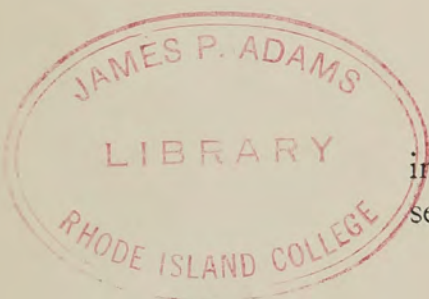
Rhode Island College
of Education



To

Professor CLARA ELIZABETH CRAIG,

inspiring teacher, earnest student of education, unexcelled servant of the state, and exemplar of the nobility of womanhood, the members of the Class of 1931 respectfully dedicate this volume of the "Ricoled."



special collection

R

378.9745

R34R

1931

-3-

THE CLASS OF 1931 can honor Professor Clara E. Craig, to whom this issue of the *RICOLED* has been dedicated, in no better way than by reprinting resolutions which were adopted by twenty-three teachers enrolled in a summer school class at this college in 1928. At the end of the session, the members of the class presented to Professor Craig, who had been their teacher, the following resolutions, to which each student had attached his signature.

“Resolved, That the members of the class led by Professor Clara E. Craig at Rhode Island College of Education, Providence, in the summer of 1928, take this occasion to thank her for the rare privilege that it has been to sit as learners at the feet of a master teacher, a lover of children, a philosopher who studies that sublime mystery, Human Nature—its potentialities and its limitations, both in the child and in his elders; and

“That they express to Professor Craig their thankfulness for her having revealed to them, in her own inspired manner, the significance of freedom in the lives of human beings, and the glory of the individual; and

“That they assure her that they carry with them a painful unrest that she would have them experience, which they pray may become a motive force in assisting them to guide their pupils toward Life—and to practise in their own careers as teachers Love, the law of life, and Service, the test and measure of true greatness.”

The sentiments expressed in these resolutions make echoes in the heart of every member of the Class of 1931.



EVELYN M. EARNES
Associate Editor



MARY E. O'BRIEN
Associate Sec.-Treas.



MARY E. CONWAY
Associate Editor



MARY G. RYNN
Editor-in-Chief



RUTH A. PADDOCK
Business Manager



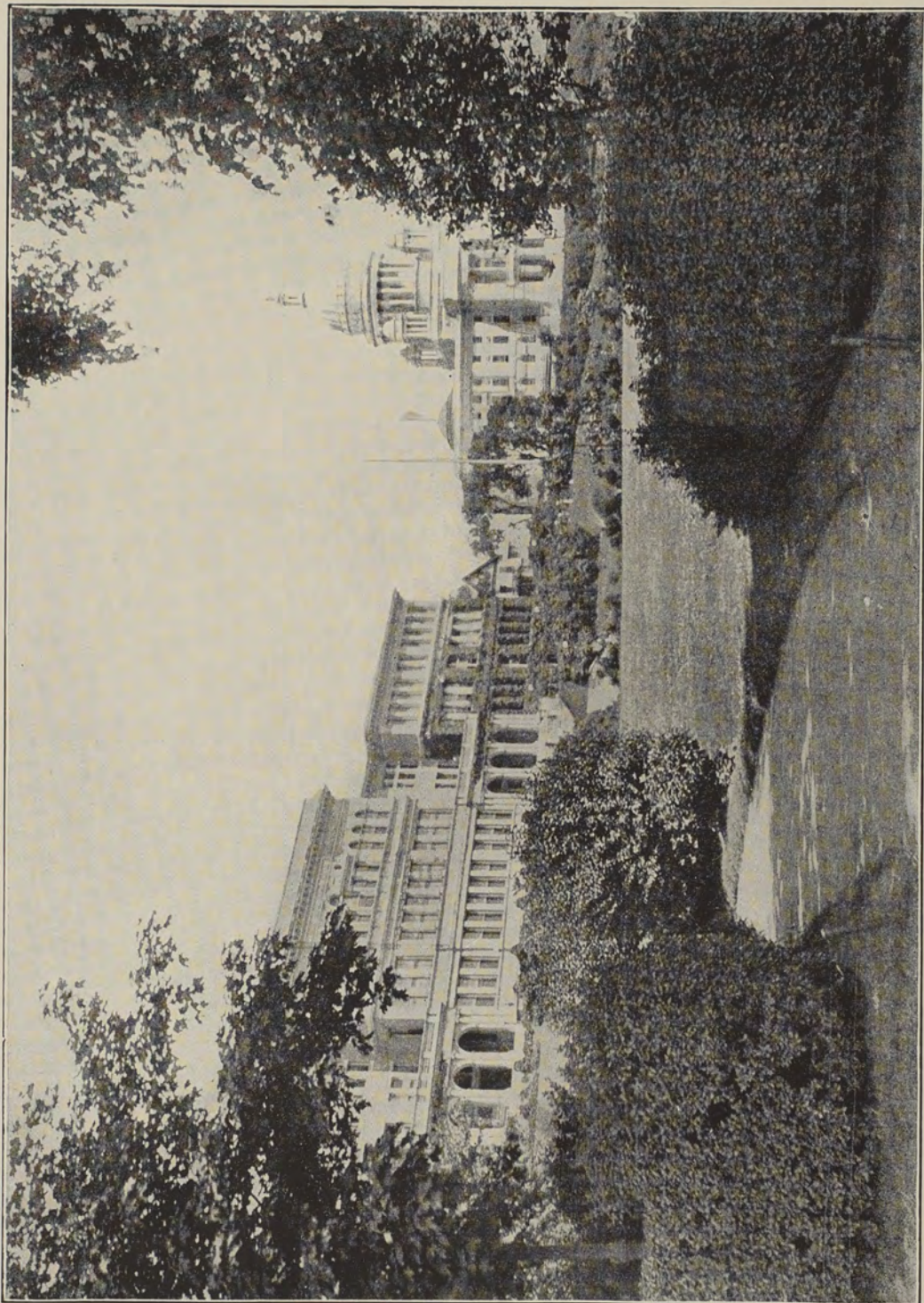
ANNA T. BLISS
Secretary-Treasurer



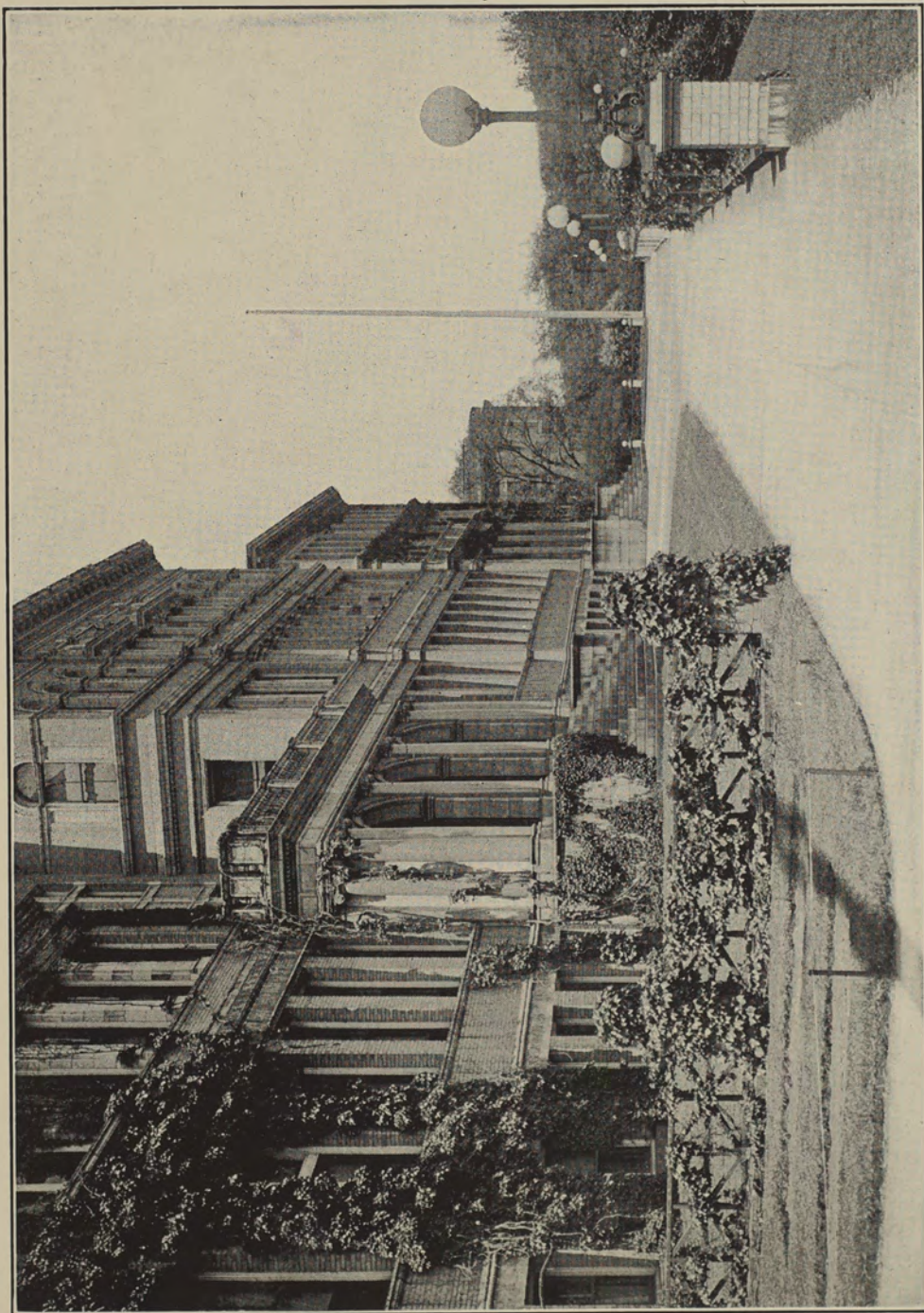
ANNA C. SULLIVAN
Associate Bus. Mgr.

Our Anchor

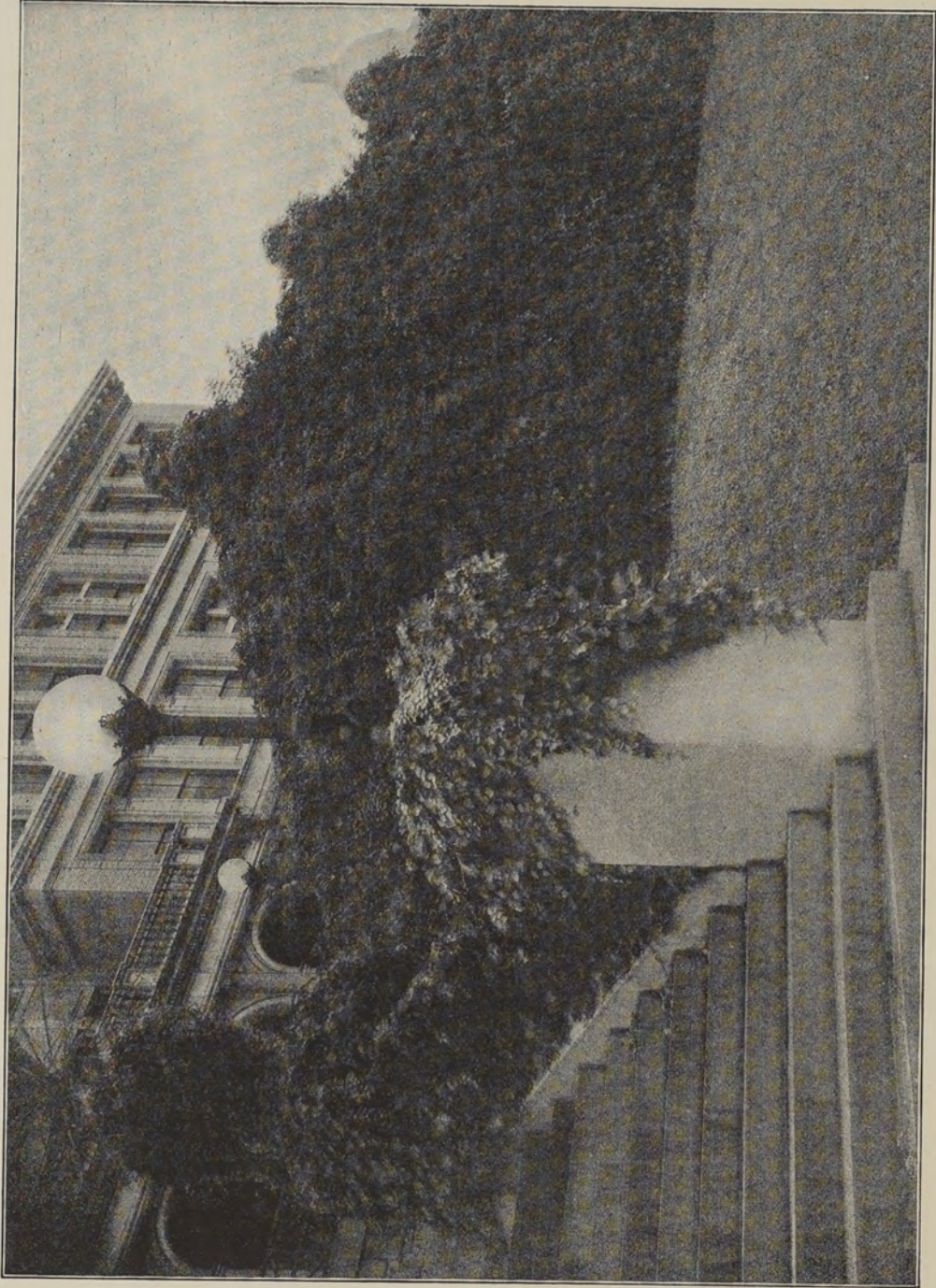
WHETHER you know it or not, the mysterious anchor is very real. You hear about it, you long to see it, and—if you are very sharp, you may. It appears once a year on the College campus. The rest of the time it is reposing in peace, somewhere on public property. ¶ The anchor is awarded to the class which is considered the very best in the college. When the anchor is awarded, the following points are taken into consideration: class and college spirit, scholastic standing, attendance at all college functions, and any special feats the class may have accomplished. ¶ The anchor was awarded to the Class of 1931 by the Class of 1930. This year the anchor will be awarded on Class Day. To whom? We wonder. The award of the anchor is one of the greatest honors that can be bestowed upon any class. Anchor classes always do things right. They are the best in the college. They go down in history.



RHODE ISLAND COLLEGE OF EDUCATION



THE PROMENADE



THE FACADE



R. I. C. E. IN WINTER



FACULTY



PHOTOGRAPH BY BACHRACH

DR. JOHN LINCOLN ALGER

Board of Trustees

His Excellency the Governor

NORMAN S. CASE, A. B., LL. B., LL. D.

His Honor the Lieutenant-Governor

JAMES G. CONNOLLY, A. B., LL. B.

The Commissioner of Education

WALTER E. RANGER, A. M., LL.D., Ed. D.

COL. E. CHARLES FRANCIS.....	Woonsocket
REV. MATTHIAS A. HEBERT.....	Pawtucket
FRANK HILL, A. M.....	Ashaway
MRS. MIRA H. HOFFMAN.....	Barrington
WILLIAM A. PECKHAM, A.B., LL.B.....	Newport
FREDERICK RUECKERT, A.B., LL.D.....	Providence
WILLIAM L. SHARPE.....	East Greenwich

Faculty

- JOHN LINCOLN ALGER, A.B. (Brown University); A.M. (Brown University); Ed.D. (Rhode Island State College); *President and Professor of Ethics and Education*; Zeta Psi; Phi Beta Kappa.
- CLARA ELIZABETH CRAIG, Ed.M. (Rhode Island State College); *Professor of Practice and Director of Training*; National Education Association; National Association of Supervisors of Student Teachers; Board of Directors of Rhode Island Institute of Instruction (President, 1925-1926).
- ROBERT MARSHALL BROWN, A.B. (Brown University); A.M. (Harvard University); *Professor of Geology and Economic Geography*; Phi Delta Theta; Sigma Psi; Fellow, American Association for the Advancement of Science; Vice-President of Association of American Geographers; National Council of Geography Teachers (President, 1927); Editor, *Journal of Geography*; Associate Editor, *International Encyclopedia*; Associate Editor, *American Yearbook*; Associate Editor, 1933 *Yearbook National Society for the Study of Education*.
- GRACE ELECTA BIRD, Ph.B. (University of Chicago); A.M. (Teachers College, Columbia University); Ph.D. (Brown University); *Professor of Educational Psychology*; Pi Gamma Mu; Fellow, American Association for the Advancement of Science; American Psychological Association; Vice-President of Rhode Island Society for Mental Hygiene; National Committee of National Economic League; Rhode Island Short Story Club; Rhode Island Ex. Club; Providence Plantations Club; Rhode Island Altrusa Club; Psychological Consultant to Rhode Island Institutions; Rhode Island Psychological Consultant to Psychological Corporation; American Association of University Women.
- CHARLES CARROLL, A.B. (Brown University); LL.B. (Harvard University); A.M. (Brown University); Ph.D. (Brown University); *Professor of Law, Government, and Rhode Island Education*; Phi Kappa, Phi Beta Kappa; Alpha Kappa Psi; Rhode Island Medico-Legal Society; Barnard Club; Past President of Rhode Island Institute of Instruction; National Education Association.
- BENJAMIN GRAVES SINCLAIR, Ph.B. (Brown University); A.M. (Brown University); *Professor of Economics and Sociology*; Delta Upsilon; Phi Beta Kappa.
- ELMER SAMUEL HOSMER, A. B. (Brown University); A. M. (Brown University); *Professor of Music*; Hammer and Tongs Society.
- EUGENE TUTTLE, A.B. (Bates College); A.M. (Teachers College, Columbia University); *Professor of School Management and Elementary Education*; National Education Association; National Society for Study of Education; National Society of College Teachers of Education; Rhode Island Institute of Instruction; President of Alumni Association of Bates College (Rhode Island Branch).
- FRANK EARL WAITE, A.B. (University of Michigan); A.M. (Teachers College, Columbia University); *Professor of History of Education and the Philosophy of Education*; Alpha Tau Delta; Barnard Club.

RECOLLA

1931

MARY LILLIAN STEVENSON, A.B. (University of Texas); A.M. (University of Chicago); Ph.D. (University of Pennsylvania); *Professor of History*; American Historical Association; New England History Teachers' Association; Foreign Policy Association; American Association of University Women; Pepper Graduate Fellowship—University of Pennsylvania; Phythian Research Scholarship—University of Manchester, England.

MARY AMALIA WEBER, A.B. (University of Michigan); M.A. (Teachers College, Columbia University); *Professor of Mathematics*.

MARION DODGE WESTON, A.B. (Mount Holyoke College); A.M. (Brown University); Ph.D. (Brown University); *Professor of Biology and Nature Study*; Sigma Delta Epsilon; Rhode Island Field Naturalist Club; Rhode Island Branch of Mount Holyoke Alumnae; Rhode Island Branch American Association of University Women; American Association for Advancement of Science; Rhode Island Humane Educational Society; Audubon Society of Rhode Island; Ecological Society of America.

ADELAIDE PATTERSON, B.L.I. (Emerson College); Ed.M. (Boston University); *Professor of Public Speaking*; Kappa Gamma Chi Society; American Association of University Women; Short Story Club of Rhode Island; Rhode Island Field Naturalist Club; Althusa Club of Rhode Island.

THOMAS HERBERT ROBINSON, A.B. (Brown University); A.M. (Brown University); A.M. (Trinity College); *Professor of English*; Phi Gamma Delta; Phi Beta Kappa (Beta of Connecticut); New England Association of Teachers of English; National Society for the Study of Education; Barnard Club; Board of Visitors, Saint Dunstan's Choir School, Providence; National Council of Teachers of English.

GAETANO CAVICCHIA, A.B. (American International University); *Professor of Romance Languages*; Tappan Scholarship from American International University; Teaching Scholarship from Harvard; Teaching Scholarship from Yale.

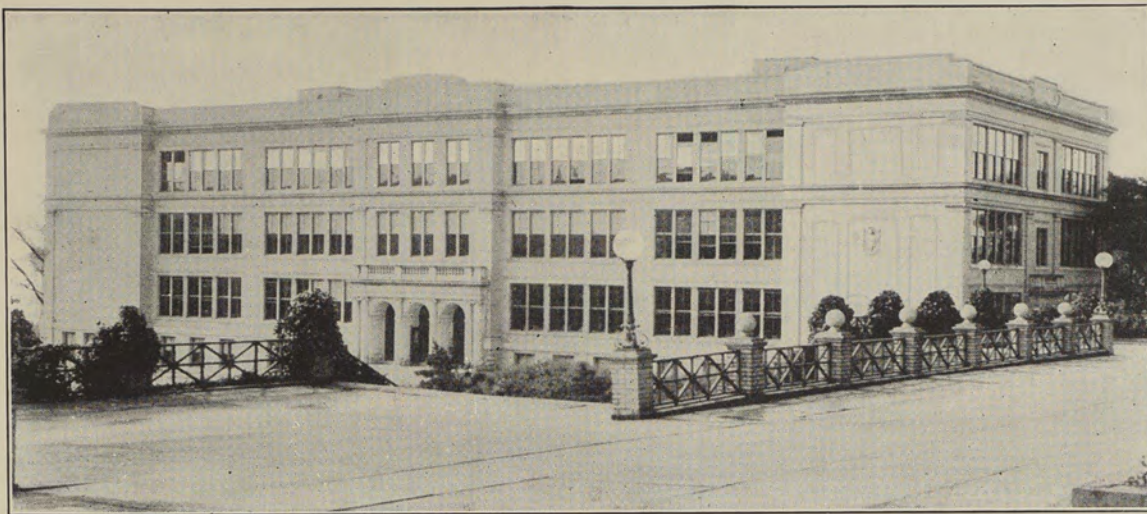
WILLIAM ALPHEUS BALDWIN, B.S. (Harvard University); *Lecturer in Ethics*; Twentieth Century Club of Boston; Boston City Club; Puddingstone Club; Barnard Club; Modern Methods Association of Massachusetts; Department of Superintendents, National Education Association.

HARRIET LUCIA SHERMAN, (Graduate of Pratt Institute, Columbia University Summer School), *Professor of Art Education*; Rhode Island Drawing and Manual Training Teachers' Association.

FLORENCE MIRICK ROSS, M.D. (Tufts); *Professor of Health Education*; Graduate of Boston Normal School of Gymnastics.



- MARY ELLEN MAKEPEACE, *Librarian*; Graduate of Greensboro College; New England Conservatory, advanced work; Columbia University, advanced work.
- RUTH MABEL RANGER, Ed.B. (Rhode Island College of Education); B.L.I. (Emerson College); *Instructor in English Literature and Public Speaking*.
- NEVA LESLIE LANGWORTHY, Ed.B. (Rhode Island College of Education); *Instructor in Physical Education*; Graduate of Harvard Summer School of Physical Education.
- AMY ADWINA THOMPSON, A.B. (Bates College); *Instructor in Rhetoric and English Composition*.
- HELEN LOUISE HILL, A.B. (Alfred University); Ed.M. (Rhode Island College of Education); *Instructor in History*.
- GRACE WINTHROP OSBORNE, Graduate of Sargent School of Physical Education; *Instructor in Physical Education*; Wellesley College, advanced work.
- ALICE LOUISE THORPE, A.B. (Wheaton College); Ed.M. (Rhode Island College of Education); *Instructor in English Composition and Grammar*.
- LILLIAN ETHEL SWAN, Graduate of Rhode Island School of Design; *Instructor in Art*.
- WENDELA CHRISTINA CARLSON, Ed.B. (Rhode Island College of Education); *Instructor in Nature Study and Penmanship*.
- KATHERINE LEONA CUZNER, B.S. (Simmons College); *Associate Librarian and Instructor in Library Science*.
- MARGARET ELIZABETH WALDRON, A.B. (Wellesley College); A.M. (Teachers College, Columbia University); *Instructor in Mathematics and Physics*.
- MARY ELLEN LOUGHERY, A.B. (Middlebury College); A.M. (Middlebury College); *Instructor in Romance Languages*.
- DORIS EVONNE TRAVER, A.B. (Bates College); *Instructor in Romance Languages*.
- CHARLES OWEN ETHIER, Ed.B. (Rhode Island College of Education); A.M. (Teachers College, Columbia University); *Instructor in History and Physical Education for Men*.
- DORIS DWINEL ALDRICH, Ph.B. (Brown University); Registrar.
- GLADYS STOCKING COGGINS, Assistant Registrar.
- ALFA LORETTA SMALL, A.A.G.O., Pianist.
- ROSE SNELL, Ed.B. (Rhode Island College of Education); *Assistant Librarian*.
- FRIEDA MAXINE BAXT, B.C.S. (Bryant & Stratton College of Business Administration); Office Assistant.



Henry Barnard School

CLARA ELIZABETH CRAIG, Ed.M., Director.
EMMA JOSEPHINE CRAIG, Assistant Director.
JOHN GANNON READ, B.S., Dean of Junior High School.
MARY AGNES McARDLE, Grade 9.
INEZ ESTELLE JORDAN, Grade 8.
WINIFRED ELLEN GLEASON, Ed.B., Grade 7.
MARY TUCKER THORP, Ed.B., Grade 6A.
MARY JOSEPHINE FEELEY, Ed.B., Grade 6B.
MARJORIE LINCOLN BEAN, Grade 5B.
HELEN TRIGGS, Ed.B., Grade 5A.
MABEL TILLINGHAST GARDNER, Grade 4A.
LINA FINNEY BATES, Grade 4B.
ISABEL MARTHA WOODMANCY, Grade 3A.
MARY MAGDALEN KEEGAN, Grade 3B.
EMMA GRACE PEIRCE, Ed. B., Grade 2A.
THERESA BARONE, Ed.B., Grade 2B.
MARY FRANCES McGUINNESS, Grade 1A.
PRUDENCE FISH, Ed.B., Grade 1B.
MARY ANNIE LOUISE EASTON, Ed.B., Kindergarten.
MARIAN A. MACMILLAN, Kindergarten.
JEANNE CECILE BACHELIN, A.B., A.M., Instructor in French.
HESTER MARY RUSSEL, B.S. in Education, Instructor in Home Economics.
WILLIAM EDWARD SLOANE, Instructor in Manual Training.
DOROTHEA COKER MORGAN, Secretary.
EDITH MAE PETTIT, Office Assistant.

Junior High School Critic Teachers

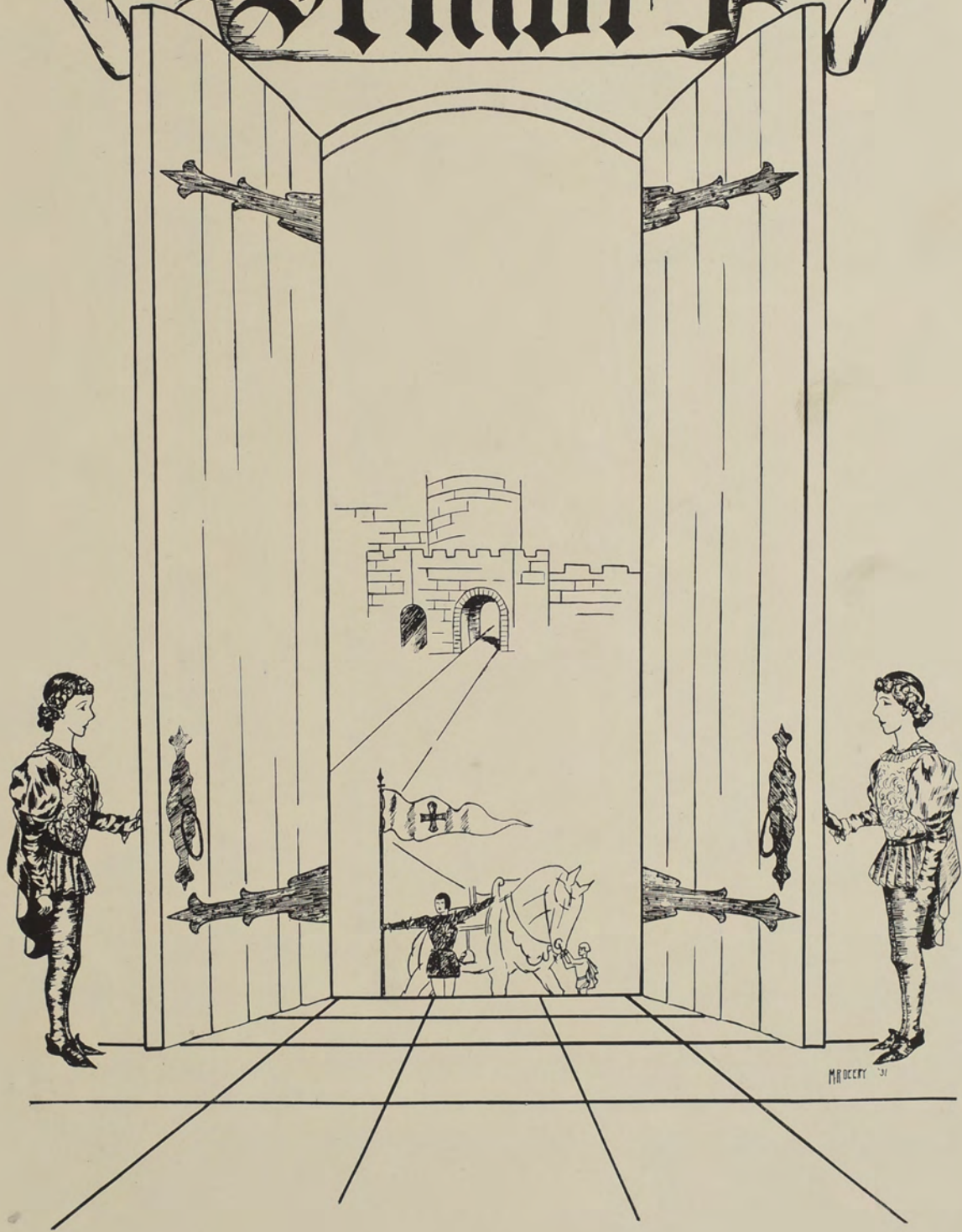
CATHERINE MARY GIBBONS, Bridgham School, Mathematics.
EILEEN LOUISE SMITH, Esek Hopkins School, History and Geography.
ALICE MARY KINYON, George J. West School, English.
JENNIE ELIZABETH CASHMAN, Samuel Slater School, Pawtucket.

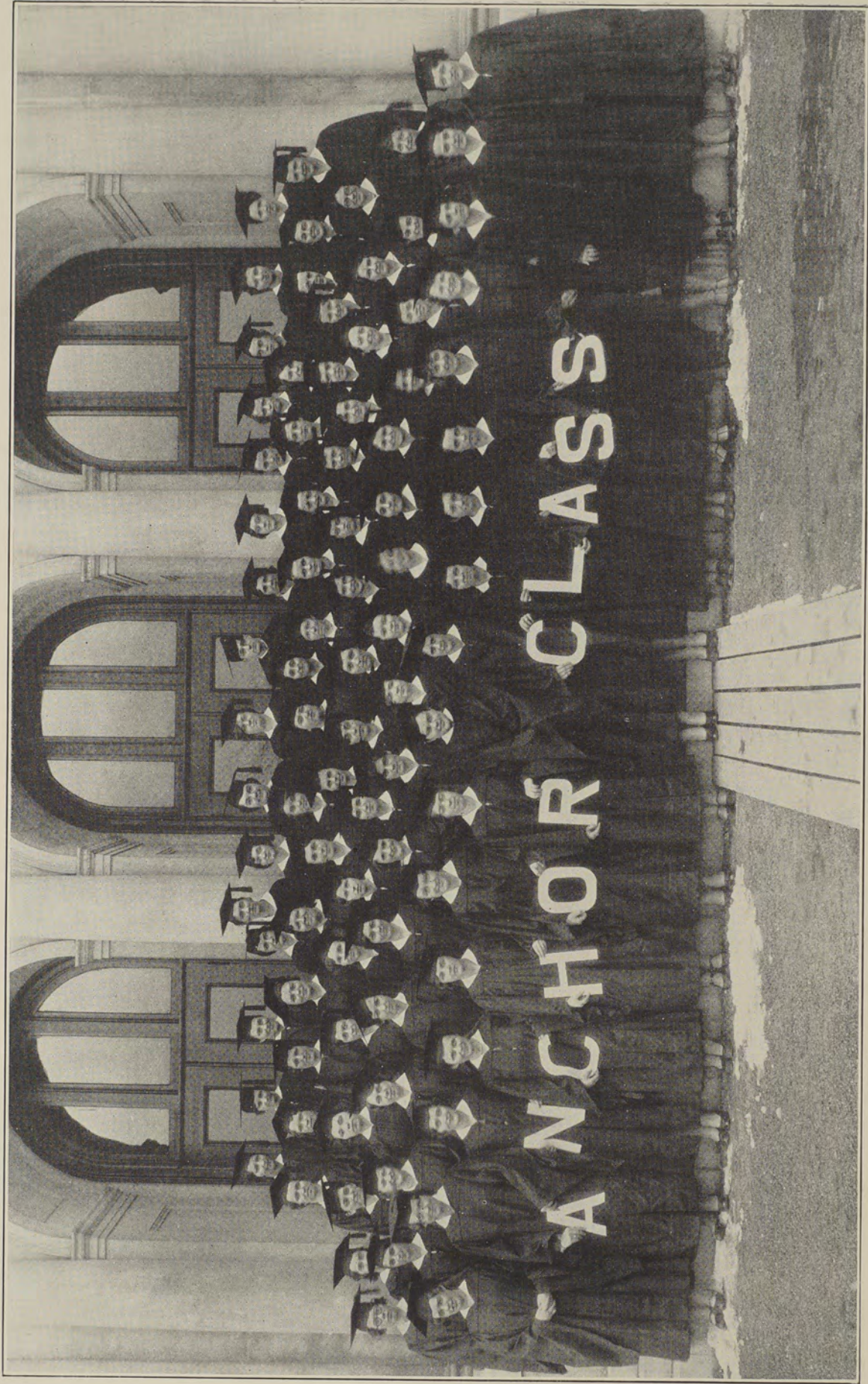


State Training Schools

- MARGUERITE BROGAN, Byfield School, Bristol.
ELIZABETH MARY PICHE, Harrisville School, Burrillville.
BERTHA AGNES BURNHAM, Central Street School, Central Falls.
JENNIE WINCHESTER PHILLIPS, Thornton School, Cranston.
MABEL RUSSELL STEVENSON, Clark Street School, Valley Falls, Cumberland.
NELLIE MAE REED, Grove Avenue School, East Providence.
MARTHA ALTHEA CRANDALL, Coggeshall School, Newport.
MARY ELIZABETH McCABE, East Street School, Pawtucket.
GERTRUDE BURDEN HECKMAN, Baldwin Street School, Pawtucket.
MARY ELIZABETH LINCOLN, Althea Street School, Providence.
MINNIE EDITH NILES, Thomas A. Doyle School, Providence.
MARGARET MADELINE COLTON, Grove Street School, Providence.
ANNIE LOUISE MUNNEGLE, Jenkins Street School, Providence.
GERTRUDE CHARLOTTE MILLER, Oxford Street School, Providence.
CATHERINE ELIZABETH McCORMACK, Ed.B., Regent Avenue School,
Providence.
LUCY WOODRUFF HOUSE, Temple Street School, Providence.
MARY ANN DONOVAN, Ed.B., Thayer Street School, Providence.
KATHERINE MARY MURRAY, Webster Avenue School, Providence.
LAURA JEANETTE CRUMLEY, Vineyard Street School, Providence.
SARAH MABELLE WILBER, Peace Dale School, South Kingstown.
MARY VERONICA QUIRK, Joyce Street School, Warren.
FANNIE RANDALL YOUNG, Bayside School, Warwick.
JESSIE STANDISH BERRY, Quarry Hill School, Westerly.
ELIZABETH CECILIA McELINN, Arctic School, West Warwick.
MARY ALICE CANAVAN, Natick School, West Warwick.
LENA FORD, Pothier School, Woonsocket.
ELIZABETH LOUISE JENNEY, Samuel Slater School, Pawtucket.

Seniors





SENIOR CLASS — JUNE, 1931



MARY THORNTON
President



AVIS PHILLIPS
Vice-President

Class Officers

June . . . 1931



MARY NESTOR
Secretary



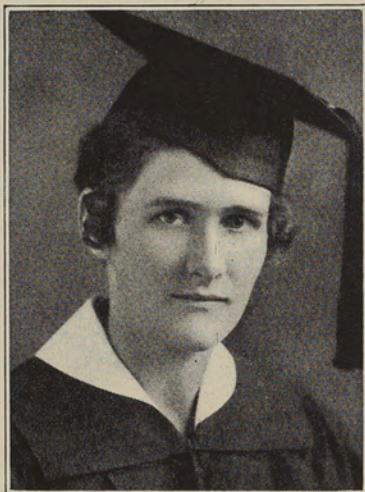
DOROTHY HAYES
Treasurer



SENIOR CLASS—FEBRUARY, 1931



M. ALICE GORE
President



HELEN GOODING
Vice-President

Class Officers

February . . 1931



PHEBE ARNOLD
Secretary



ANNA SULLIVAN
Treasurer



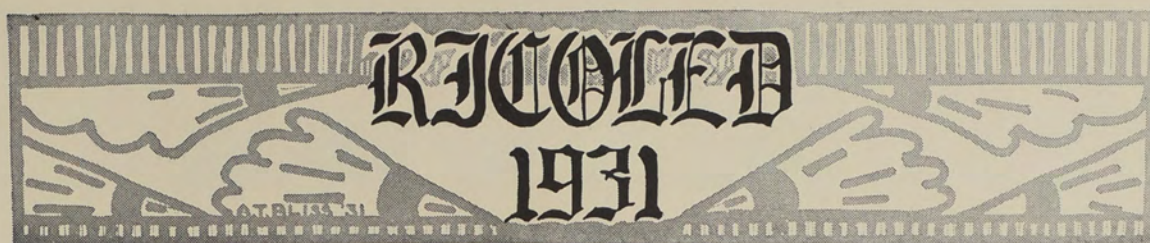
Rememorari

A cloud hung low to shield the torrid sphere,
The birds lay still with downy wings aquiver,
The zephyrs breathed a prayer of benediction,
As pilgrims left the shrine, aglow with fervor,
To join the staunch preceptors of the truth;
To arm the weak with knowledge, stamp out fear,
Fight pettiness, injustice—weakening curses
That prey on man; stern efforts ne'er to cease
To save sweet dreaming childhood from delusion,
Mascot of whining, sneering, cowardly Age.

And as the pilgrims paused in contemplation,
Their thoughts strayed back to sacred days of yore;
In calculated time but years of four,
But measured as a miser's treasured purses,
An ounce of mortal blood, a pound of flesh,
Forbidden hours, confidences sweet.

And in each waiting ear arose afresh
Tuneful chorus of praise to Alma Mater,
A lusty tribute, eloquent cantata,
Eclipsed by din of thundering applause
Reverberating o'er the span of time
To die away when juniorship was reached.

Before the mind's eye rose a vision prime:
A campus gay, a tense eager throng,
An expectant hush—a speech—a moment long—
The precious burden, coveted college prize,
The Anchor! blessed symbol of the state!
Theirs! As most worthy! from their Senior sponsors.



Then post haste tumbled images to date,
Gay blossoms in the pattern of the class;
Banquets and dances, teas and bridges enmasse,
Gym meets, impromptu clownings, favors, clubs,
Threaded the serious warp of novice life,
And wove the woof of friendship ever closer.

In epitome the role, festive and blithe,
Of irresponsibility was shorn
At cap and gown ritual, a Mayday morn:
The stage was trod by black berobed Youth
On whom the crown of dignity lent grace,
As sepals, buds, they lovingly embrace.

The culminating joy naught could efface—
An ecstasy of frenzied happiness—
Found birth again; the mutual surge was boundless
At thought of Class Day on Friday fair,
Commencement preceded by banquet banter,
And Terpsichorean pagentry at eve.

The softly fluted bells conspired together:
Each tiny echo dancing winds retrieve,
And bear it straightway to the waiting trees,
Where dryad fairies, with the aid of bees,
Gently from the spell of Memory release
The pilgrims entering on a life sublime;
The goodly band with courage of the sage
Pleated their sober garb, renewed their gage
As members of a learned brotherhood.
With sad hearts, glad hearts, hearts but slightly touched,
In reverence offered they a silent farewell,
To the hushed obligato rising from the dell;
Then turned their faces, bravely gay, worldward
To spread the truth of Alma Mater dear.

EVELYN M. EARNES.



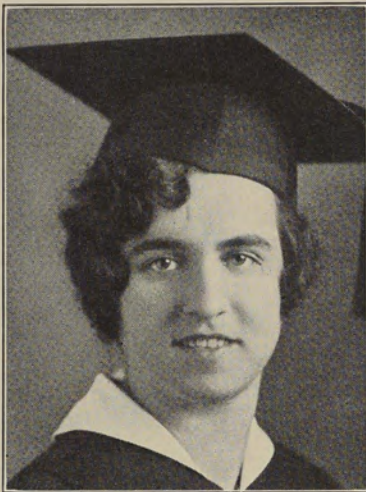
IN MEMORIAM

Monica Gaffney

1909-1930

*"And with the morn those angel faces smile,
Which we have loved long since and lost awhile."*

RICOLED 1931



PETRINA EVELYN ANGELONE

14 Hall Street

Providence, R. I.

ENGLISH

"Born for success she seemed
With graces to win, with heart to hold,
With shining gifts that took all eyes."

Interesting, dependable, and industrious are the word pictures which most adequately describe this clever and brilliant Senior. Petrina finds pleasurable satisfaction in doing her work well. Yet she finds plenty of time to indulge in those activities which require leisure moments.

"If she had any faults, she has left us in doubt;
At least in the four years we could not find them out."

Kinsprits	4
Italian Club	4

PHEBE ARNOLD

41 Waldo Street

Pawtucket, R. I.

PHYSICAL EDUCATION

Who's always missing at our class meetings? Three guesses! Well, in one guess one knows it is none other than Phebe, and why? — because she wants some one to move that "the minutes of the last meeting be dispensed with." Is it perhaps that no minutes have been recorded? The answer will come later, Secretary Arnold. Jolly, fun-loving girl that you are, with that delightful sense of humor, we send you into the teaching field to show some of our future citizens "just how to keep fit."

Basketball	1, 2, 3, 4
Athletic Council	4
Class Secretary	4
Class Prophecy Committee—RICOLED	4



HELEN RITA ASHWORTH

447 Academy Avenue

Providence, R. I.

ENGLISH

A sound of someone dashing madly into the locker-room! A face lighted with excitement! Helen has heard some important news and in a moment will be telling all of us about it. This fair lady is not always excited, but is often quiet and thoughtful. When Helen is in the latter mood, watch your step, for, as the saying goes, "Still water runs deep." "Ashy" has sent us into gales of laughter by her naive remarks in which she specializes. Helen manages to keep thin by worrying about her score, and is always reassured to find it much above the required plus five. "Ashy" will remain forever in our memories as "one of the best."

Basketball	1
Kinsprits	4
Social Committee	3, 4



RECOLED 1931



GEORGE HENRY BLACKWELL, JR.

3684 Pawtucket Avenue Riverside, R. I.
PUBLIC SPEAKING — PSYCHOLOGY

We all know Junior, of course; tall and straight, active, and efficient, and—oh, yes, we mustn't forget his ever present curl and cheery smile. He is always ready to lend a hand and accommodate you with that new Whippet Six of his. What would the class have done without his spirit of co-operation and incidentally what *will* the girls do when Junior leaves us?

Basketball	2, 3, 4
Dramatic League	1, 2, 3, 4
Student Council	1, 4
Debating Team	1, 2
Athletic Council	4
Social Committee	1, 2
President Men's Club	4

ANNA TERESA BLISS

124 Winter Street Woonsocket, R. I.

ENGLISH

A demure young miss is our Anna, but good fun as any of her circle of intimate friends will eagerly testify. One can find her haunting the realms of the English department athirst for more knowledge. At other times we have seen her strolling along the corridors with her pal, Mary, engaged in earnest conversation. Anna wants to give to her little school friends her keen enjoyment of English. We know that she will make any lesson interesting, in English or otherwise.

Basketball	1, 2
Kinsprits	4
Nature Club	2
Art Club	4
Secretary-Treasurer—RICOLED	4



KATHRYN DOROTHY BRACQ

11 Bergen Street Providence, R. I.

MATHEMATICS

Although she seems quiet and serious, the twinkle in her eye will tell you the kind of companion you will find in Kathryn out of class. Her favorite pastime? How can we expect to solve that problem when we see her enter into every activity with equal zest. We know, however, that dancing is one of her greatest enjoyments. We have seen her spending a large part of many lunch hours dancing in the gym. We expect great things from Kathryn.

Art Club	4
----------	---



RECOLED 1931



S. ELIZABETH CAMPBELL

26 Mary Street Central Falls, R. I.

PHYSICAL EDUCATION

Jolly good company is "Betty," as many a one from the freshest of Freshmen to the most senile of Seniors can testify. Her expressive speech, colored by ever-new phrases, is an entertainment in itself. Then, too, there is her uncanny knack of mimicry. Quick to detect mannerisms in others, Betty can present any number of characters—not excluding professors. A true friend in need is Betty, for her trusty check book stands ever ready to aid those who find themselves in financial distress. Sports give an outlet for her abundant supply of energy. At least one schoolroom may look forward to a far-from-dull time next year.

Basketball 1, 2, 3, 4 Kinsprits 4 Student Council 1, 2, 3
 Advertising Manager, ANCHOR . . . 4
 Humor Committee—RICOLED . . . 4

CATHERINE CASSERLY

26 Huxley Avenue Providence, R. I.

SCIENCE

Was there a question about Science? Then, we refer you to Catherine, a shark in that particular subject. Those who know her recognize her unusual ability to do well everything she undertakes. Throughout her four years, she has shown us what brains plus work can accomplish. However, do not think that she is a grind; for she skates, dances, and often has displayed her athletic talent during games in the gymnasium. It is obvious that Catherine is destined to be a success, for her will-power and determination will lead her to unexplored regions in the teaching world.

Kinsprits 4 Nature Club 4 Student Council 3
 Humor Committee—RICOLED . . . 4
 Chairman Prophecy Committee—
 RICOLED 4



LEDA CIASULLO

120 Wendell Street Providence, R. I.

ITALIAN — FRENCH

Who is the brown-eyed lass dashing down the corridor one minute before the bell rings? It is none other than Leda, our French and Italian student. Leda is always cheerful and optimistic. She has a keen sense of humor and can play a joke or be the butt of one with equal good will. Some day we expect to hear from Leda as head of the foreign language department of one of our high schools.

Class Prophecy Committee 4



RICOLED 1931



RUTH KATHERINE CLIFFORD

65 Pinehurst Avenue Providence, R. I.
GENERAL SCIENCE

The truth of the old adage that "silence is golden" is exemplified in Ruth. Rather than hindering her, this has led her on until we find Ruth among the General Science teachers of a Providence junior high school. Her scholastic ability has always been outstanding, and she will long be remembered by her European history classmates in their pre-examination days.

MABEL HARRIET CLOUGH

149 Magnolia Street Auburn, R. I.
MUSIC

One look at Mabel, and we know that she is as true as her eyes are blue. A friend to all, Mabel has won her quiet way into the hearts of each of her classmates. Music is Mabel's great love, and her pupils will indeed be fortunate to be led to an appreciation of music by so conscientious a teacher as Mabel. Mabel isn't as quiet as she at first appears. She is quite a wit when she gets started.

Nature Club	2
Kinsprits	4
Glee Club	1, 2, 3
Social Committee	3
Prophecy Committee—RICOLED	4
Class Day Speaker	4



H. GERTRUDE COLEMAN

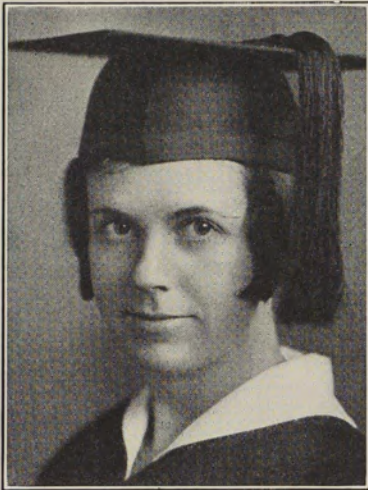
112 Sheldon Street Providence, R. I.
HISTORY

Who is editor of the ANCHOR? Who excels in all her subjects? Who takes "years" to don her hat and coat? Need we tell you the answer? Yes, it is Gert! Gert, the hard-working, lovable pal of the Seniors, who has been tireless in her efforts to bring honor to her class through her many accomplishments.

Editor-in-chief—ANCHOR	4
Kinsprits	4
Press Club—Treasurer	4
Dramatic League	4
Glee Club	1, 2, 3, 4
Student Council	4
Assistant Editor—ANCHOR	2, 3



RICOLED 1931



MARY ELIZABETH CONWAY

138 Granite Street

Westerly, R. I.

HISTORY

Our Mary is a perfect sport model—full of pep and vitality, always ready with a smile and a cheering word for all. Just look at Mary's face, and you'll see she is an earnest and efficient worker in both scholastic and social lines. We have indeed been lucky to have such a fine character with us during our college course. Mary has enlivened most of our college social functions and has been a real bright light among her classmates.

Kinsprits	4
Press Club	4
Student Council	3
Social Committee	1, 2
RICOLED Board, Associate Editor	4

LILLIAN ANASTASIA COONEY

21 Phoenix Street

Central Falls, R. I.

ENGLISH

No doubt you will know this student who has added so much to the reputation of our class. Her work has always been prepared with the greatest efficiency. Lillian has lent her willing support to all school activities. Her amiable disposition, combined with unusual ambition and earnestness, points to a very successful future.

Kinsprits	4
Art Club	4



MIRIAM COPLAN

39 Mount Hope Avenue

Providence, R. I.

ENGLISH

Our clever Miriam! A girl who is truly profound yet withal possessed with a sparkling personality that is a welcome addition to any social group. Miriam has deep understanding and definite views on a variety of subjects which she can adequately and capably express. Miriam is an asset to any college with her bubbling personality as shown by the twinkle in her true blue eyes and her dignified mien.

Kinsprits—Hostess	4
Advertising Staff—RICOLED	4



RICOLED 1931



ETHEL MARY CRONIN

18 Croade Street Warren, R. I.

MATHEMATICS—ENGLISH

Everybody loves a girl with a sunny disposition. Ethel's constant smile and pleasing personality will always be remembered by her classmates. Her friendly manner coupled with her scholastic ability will inspire her pupils to do great things. Ethel will surely win the love of her pupils and the admiration of those with whom she will work.

Kinsprits	4
Art Club	4

LOUISA DALBY

503 Huntington Avenue Providence, R. I.

ENGLISH

“We saw her charming, but we saw not half
The charms her downcast modesty concealed
The mildest manners and the gentlest heart.”

Honor and conscience are the two qualities of which Louisa has an abundance. Everything that she does, she believes in doing well. It is said that it is the tranquil people who accomplish much, and Louisa has taken in a trip to England during our course that most of us have missed. Louisa is the personification of the expression that silence and modesty are the best ornaments of women.

Kinsprits	4
-----------	---	---	---	---	---



MARY DAVENPORT

278 Central Street Central Falls, R. I.

ENGLISH—ART

A witty, humorous lass—that's Mary. Whenever a giggling party ensues, one may be sure that Mary and her pal, Julia, are much in evidence. Mary is a particular devotee of the main library where she devours books by the score. She is one of our best-read scholars and has drawn her choice of reading from a wide range. With her excellent background, she will open new worlds to her tiny folk of the first grade. They will surely love this teacher with her sunny disposition.

Kinsprits	4
Art Club	4
Glee Club	1, 2
Literary Editor—RICOLED	4



RECOLLED 1931



CLARICE MARY DAVIS

45 Haile Street

Warren, R. I.

MATHEMATICS — ENGLISH

Clarice has been an ideal classmate—amiable, patient, and always ready with the needed smile. Claire has chosen Math. in which to specialize, but if marks be an indication, she might have chosen any or all subjects. Claire has been Ethel's particular friend during her college course, but we all know her well enough to love and appreciate her sterling qualities.

Kinsprits	4
Art Club	4

MARGARET REGINA DEERY

58 Bainbridge Avenue

Providence, R. I.

HISTORY — ART

Margaret is the "perfect posture" girl of '31. She is a great favorite among her classmates. Possessing a pleasing manner, Margaret has taken an active part in social affairs while at R. I. C. E., and has served on many social committees as an efficient chairman. Besides being socially capable, Margaret has proved her worth along scholastic lines. She is capable of going far in the teaching profession.

Chairman, Social Committee	3, 4
Kinsprits	4
Art Club	4



ANGELA DE PALMA

550 Charles Street

Providence, R. I.

MATHEMATICS — FRENCH

Everyone who knows Angela will agree that she is a loyal student of R. I. C. E. During her four years here, she has won her way into all our hearts, because of her kindly disposition. Her business-like attitude and careful attention toward all matters make her a promising candidate for the teaching field. Angela's pleasing voice has been a valuable asset to our Glee Club in its delightful programs.

Kinsprits	4
Art Club	4
Dramatic League	4
Glee Club	2, 3, 4
Italian Club	4



RECOLLA 1931



BEULAH DIGGLE

671 Providence Street

Natick, R. I.

PSYCHOLOGY

“Agreeableness” is an asset to any teacher, and Beulah possesses it to the extreme. Her friendliness and charm have won her many friends during her four years at college. It is such people as Beulah who make it hard to part when at last school days are ended. Because of her efficiency in her studies, we know she will make a very capable teacher.

Glee Club 2

MARY ELIZABETH DONNELLY

1027 Chalkstone Avenue

Providence, R. I.

HISTORY

Although we know that Mary has specialized in history, nevertheless she is one of those persons whose knowledge seems to extend to many fields. Who among us could forget her contributions in Literature Class? Mary is a true friend and may always be counted on to aid whenever it is necessary. She has always seemed to enjoy herself, and we only hope that we have helped to make her four years as pleasant for her as she has helped to make ours.

Dramatic League	4
Kinsprits	4
Press Club	4
Social Committee	4



CATHERINE CHRISTINE DOOLEY

40 Ruth Avenue

Phillipsdale, R. I.

MATHEMATICS

Of course, you know Catherine! She is that tiny little miss who came to us from the University of California in her Sophomore year. She bubbles like sparkling water—a little voice, in a little shadow, that carries with it much significance, especially in mathematics and history. We know that Catherine will be the kind of teacher whom her pupils will admire and supply with big, red apples.

Kinsprits 4



RICOLED 1931



ELIZABETH GLADYS DWYER

92 Burton Street

Bristol, R. I.

ENGLISH

Betty has as many friends as she has classmates. All who know her find her a "peach of a girl." Betty often has an interesting and exciting story to tell her many friends. She is awfully good company, versatile, and always ready for fun. Betty's versatility is proved by her social and scholastic record at college—both of the highest.

Kinsprits	4
Student Council	1
Press Club	4
Assistant Editor of Freshman BIBLOS	4
Typist—RICOLED	4

EVELYN MADORA EARNES

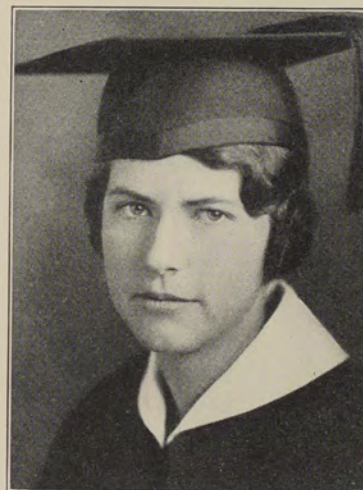
763 Park Avenue

Woonsocket, R. I.

ENGLISH

Here, we have a genius in our midst, for Evelyn has certainly proved herself so. Her quiet, unassuming, modest air has been loved by everyone with whom she has come in contact. Who is it who has not read with keen enjoyment her short stories and poems in the ANCHOR? If you doubt the fact that she has plenty of literary talent, just turn to the front of this RICOLED and read the verses written by our clever Class Poet. If present indications are a forecast, our prediction is that in future years Evelyn's name will be written among contemporary writers.

Kinsprits, Scribe	.	4	Nature Club	.	1, 2, 3, 4
Press Club—Historian	.	4	Class Poet	.	4
Editor, Freshman BIBLOS	.	4	Class Day Speaker	.	4
RICOLED Board, Associate Editor	.	4		.	4



MARY DOROTHY ESCOBAR

Bristol Ferry

Bristol, R. I.

ART

Mary has been known in certain circles as the class comedian, and she certainly has proved herself worthy of the title, for she always has a witty word to cheer everyone. Mary is one of the foremost patrons of the library where she may usually be found either reading a newspaper or writing letters. Her art work is outstanding. She is one of the girls whose art work is always done on time.

Student Council	4
Kinsprits	4
Press Club	4
Dramatic League	4



RECOLLED 1931



LOIS MAY ESTEN

23 King Street

Manton, R. I.

ENGLISH

“Simplicity of character is no hindrance to subtlety of character.”

Sincerity, truth, faithfulness, are the qualities by which Lois is known among her friends. Blessed with good health and good sense, she has made the most of her four years at R. I. C. E. by her industry and merit. Lois is perhaps quiet at first but is surely a good and true friend when we get to know her.

Kinsprits	4
Nature Club	1
Glee Club	1, 4

RUTH ALICE FAIRBROTHER

Sayles Avenue

Pascoag, R. I.

ART — PSYCHOLOGY

Ruth is certainly a perfect example of the saying: “Good things come in small packages.” Small of stature, but large of heart, Ruth is considered a friend by many, but most especially is she Mary’s friend. Literature is another of Ruth’s strong points besides the subjects in which she has specialized. Ruth has been one of our cutest and most pleasing classmates.



Dramatic League	2, 3, 4
Art Club	4
Press Club	4
Kinsprits	4
Basketball	1
Italian Club	4

ROSALIE VICTORIA FALCIGLIA

65 Ledge Street

Providence, R. I.

MUSIC

Rosalie is an all-round college girl, who has given unlimited services to her college and its activities. Rosalie has been an especially ardent worker in music and dramatics. By her pleasing personality and ever willingness to help one in need, Rosalie has won many friends.



Dramatic League	4
Press Club	4
Art Club	4
Glee Club	1, 2, 3

RECOLLED 1931



ROSE FASANO

26 Bay View Avenue

Bristol, R. I.

MATHEMATICS

A smile that is at once pleasing and captivating is one of Rose's big assets and has done much to put Rose where she is in the hearts of her classmates. Rose enjoys a good time, but she has capably adapted herself to the business of preparing for her chosen profession.

Kinsprits	4
Art Club	4
Italian Club, President	4
French Club	4

MARGARET MARY FEELEY

149 Indiana Avenue

Edgewood, R. I.

ENGLISH

Before an exam.: "Margaret, do you know anything?"
"No, not a word."

After the exam.: "Oh, I flunked it."

After the blue books have been returned: "Margaret Feeley, 98%."

Margaret is jolly and studious. She has always maintained a fine spirit of loyalty to college functions, never missing anything that the college gave—except classes.

Kinsprits	4
Press Club	4
Glee Club	1



ROSEMARY FRANCES FINNEGAN

649 Smith Street

Providence, R. I.

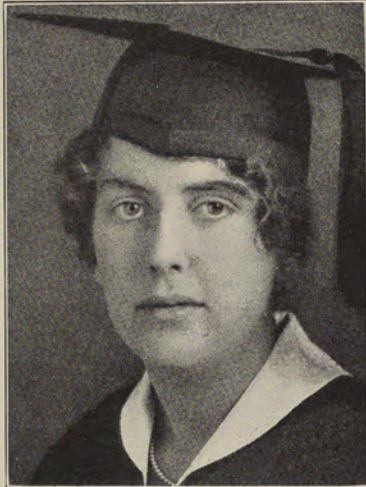
GEOGRAPHY

We regret but one thing about Rose—that she denied us her first year of college companionship with which she favored Rhode Island State College. Yet, in three years she has done admirably what some do not accomplish in a longer time. Truly, we say of her that she is "one of the best." Rose has come to our support socially and otherwise. Her quick wit, light-heartedness, and ever-ready smile have endeared her to many.

Kinsprits	4
Art Club	4



RICOLED 1931



ANNA FRANCES FLYNN
10 Mayflower Street Providence, R. I.

HISTORY

The class of '31 is indeed fortunate to have numbered among its members, Anna. From the time of her entrance at R. I. C. E. as a Freshman, she has been a true friend to all. As President of the Student Council, she displayed her ability as a leader and was instrumental in bringing about the much desired silence in chapel. We thank you, Anna, for accomplishing this miracle. As an active member of the Debating Team and the Dramatic League, she won a place in the hearts of the whole student body.

Student Council 1, 4	Dramatic League
Vice President and	Treasurer 2, 3, 4
President 4	Glee Club 1, 2
Basketball 1	Debating Team 3
Kinsprits 4	Editor-in-Chief, Anchor 4
Art Club 4	Anchor Board 2, 3
Write-up Committee, Ricoled 4	

MARY ELIZABETH GERMANI

136 Brook Street Pawtucket, R. I.

MATHEMATICS

We have in Mary a combination of all the qualities essential to a good teacher. Mary has always shown an active interest in school affairs, and her spirit of co-operation has been admired by her classmates. Schoolwork does not draw all Mary's attention, however, for she has many outside interests. Mary's future pupils will frequently be rewarded by one of her pleasing smiles. After graduation, Mary will be missed by all her classmates as her friendship has been a joy to all of us.

Kinsprits	4
Art Club	4
Glee Club	2
Italian Club	4



ELSIE GIBSON

New London Avenue West Warwick, R. I.

ENGLISH

Here's Elsie. You know her, don't you? She's one of those girls you always like to have around. Whenever there is work to be done, Elsie is right there to do it. She is frightfully clever, both in Art and in English. A brilliant student, an enthusiastic supporter of college doings, an all-round good sport, and a girl you just can't help liking.

Student Council	3
Kinsprits	4
Press Club, Vice-President	4
Social Committee	4
Professors' Statistics Committee, RICOLED	4



RICOLED 1931



EDNA PAYNE GILMORE

155 Summit Avenue

Providence, R. I.

HISTORY

Edna is one of the few who can combine work with play and still rank among the highest. Seldom do we see her without her famous smile, and her cheerfulness mixed with good-nature has won her a legion of friends. We need not ask you for your opinion of her as a singer, for, as such, she has distinguished herself. For four years she has devoted her ever-willing support to the Glee Club, and often have we heard her render vocal solos for our benefit.

Kinsprits	4
Glee Club	1, 2, 3, 4
Photograph Committee	4
Photograph Editor, RICOLED	4

ESTHER GOLDSMITH

21 Camp Street

Providence, R. I.

LITERATURE

Smart, sophisticated, and decidedly chic is Esther. Her favorite subject is literature. Anyone who knows the number of books Esther reads will certainly agree that she does justice to her choice. Esther has many activities outside of college, but she does not neglect her Alma Mater. She loves to dance, and we admit that she does it well.

Kinsprits	4
Press Club	4
ANCHOR Board	2
Advertising Staff, RICOLED	4



HELEN GARFIELD GOODING

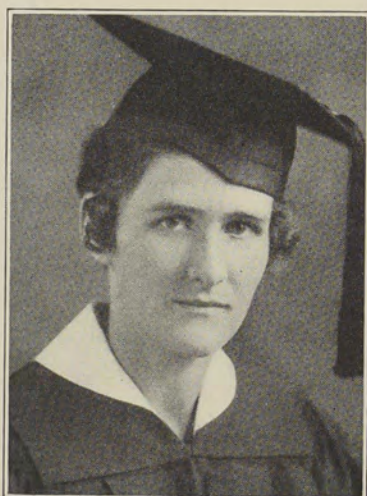
74 Sweet Briar Avenue

East Providence, R. I.

HISTORY

Perseverance, courage, and studiousness—all these are foremost characteristics of Helen. During her first years at college, Helen was one of the college's best athletes, training to be an excellent teacher in her chosen field. However, after an illness which forced her to forsake athletics as a chosen profession, Helen, not discouraged, returned and with her characteristic perseverance applied herself to history, in which she proved herself as capable as she had been in the former field.

Basketball	1, 2
Student Council	1, 2, 3, 4
Class Vice-President	4
Professors' Statistics Committee, RICOLED	4



RICOLED 1931



ANNA GOODWIN

57 Fifth Street

East Providence, R. I.

ENGLISH

East Providence is well represented by this young lady, for she is one of our good students. She is distinguished from the rest of her classmates by a very unusual laugh, coupled with a keen sense of humor. Her engaging personality has won her many friends during her four years with us. Although her scores are high, Anna finds time for many social engagements. Her ability assures us that she will be successful in her chosen career.

Kinsprits	4
Art Club	4

MARY ALICE GORE

338 Prairie Avenue

Providence, R. I.

ENGLISH

Who is this pretty girl striding down the corridor? It is none other than "Al," our President, and a better-natured, more lovable and understanding individual never existed. Well, "Al," you certainly have shown your marvelous capacity for leadership during your term as President, for efficiency has been your byword ever since your freshman days.

Class President	4
Vice-President, Student Council	4
Chairman Social Committee	2, 3
Cap and Gown Committee	4



BERTHA THERESA GORMAN

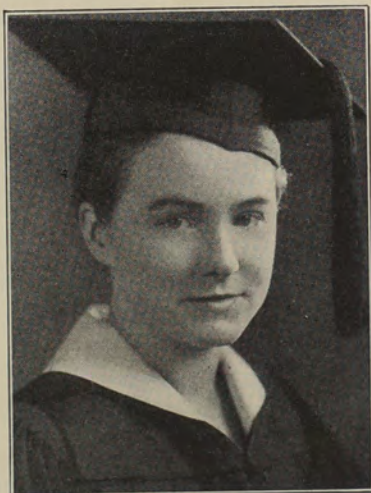
12 Sumner Avenue

Central Falls, R. I.

FRENCH

Here's our "Bert." Life, energy, enthusiasm, and ability all combined in one; she surely is a busy girl. Bertha makes the "dust fly" about anything to which she turns her mind. She excels in French, English, and music. We have had many a good joke on Bert, but not once has she failed to take one in good part.

Basketball	4
Dramatic League	1, 2, 3
Glee Club	1, 2
Student Council	1, 2, 3, 4
Athletic Council	2
Cap and Gown Committee	4
Faculty Personals, RICOLED	4



RICOLED 1931



MARY FRANCES GRIFFIN

Pascoag

Rhode Island

PSYCHOLOGY

"From the crown of her head
To the soles of her feet
She is all mirth."

Mary is the girl with the big brown eyes and the merry smile. She can appreciate humorous situations because she is so full of humor herself. If you don't believe it, just attend a movie performance with her. We are sure that Mary's pupils will never know a dull moment in her classroom. How could they, with a teacher so full of life?

Kinsprits	4
Art Club	4

ABBY MYRTLE GRINNELL

63 West Hilton Street

North Tiverton, R. I.

ART

Behold our foremost artist! Abby is always to be found in the Art Room. Working for herself? No, indeed. She is making a poster for some good cause or doing work for others. Who among us can forget the Kinsprits' book plate so artistically done by our own Abby. Her unselfishness and willingness to help all have brought her many friends and will undoubtedly continue to do so in the future.

Student Council	4	Press Club	.	4
Kinsprits	. 4	Nature Club	.	1, 2
Art Club, President	.	.	.	4
Vice-President	.	.	.	4
Dramatic League	.	.	.	4
Social Committee	.	.	.	4
Calendar Committee, RICOLED	.	.	.	4



ESTHER IDA GROSSMAN

146 Pearl Street

Providence, R. I.

MATHEMATICS — MUSIC

Those who do not know Esther think her quiet, but to her friends this quietness means deep concentration on a math problem, for Esther is the luminary of the advanced math class. We sincerely hope that Esther will find happiness in revealing mathematical truths to the next generation.

Press Club	4
Kinsprits	4



RECOLLED 1931



BEATRICE MARIE GUILBAULT

Spring Street

Pascoag, R. I.

PSYCHOLOGY

If you are looking for a good-natured girl with plenty of vitality, let us introduce you to "Bee." She is one of the most charming and dependable girls in our class. Her gay smile and cheery glance have made her a true friend of all of us. Her favorite pastime is motoring, out in the country. We admit that such a pastime offers delightful recreation.

Kinsprits	:	:	:	:	4
Nature Club	:	:	:	:	4

JULIA MARY GUTOWSKI

69 Cutler Street

Warren, R. I.

ART

Julia, with her infectious smile and generous supply of humor, has lightened the solemn hallways on many a dark and dreary day. For all her optimistic mien, Julia struggles under a great sorrow—weight, or rather lack of weight. In vain does she step on the scales during the moments immediately following lunch in order to see the scales register an additional pound or two. The 7:50 train from Warren holds a peculiar fascination for Julia. What can this mean? ??

Kinsprits	:	:	:	:	4
Art Club	:	:	:	:	4



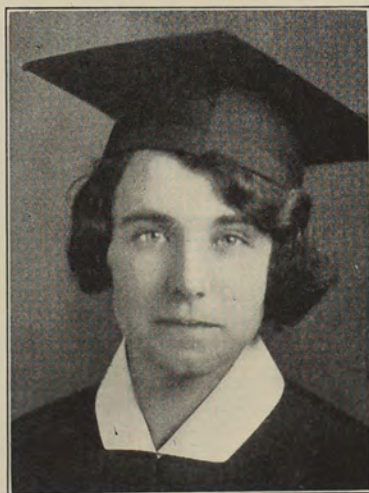
HELEN FRANCES HACKETT

857 Atwells Avenue

Providence, R. I.

MATHEMATICS

Helen was welcomed into these precincts from Classical High School. By continuing her record, she has established for herself and her Alma Maters a very desirable reputation. Her popularity among her classmates has resulted from a cheerful, helpful spirit, which has always been one of Helen's most prominent characteristics. Her progress indicates a bright future for Helen.



RICOLED 1931



ESTHER MARGARET HALLINGTON

7 Brayton Street East Greenwich, R. I.

PSYCHOLOGY

This tall, vivacious member of our class has given proof of her powers in covering four years' work in three and a half years. Perhaps her inside information in psychology has endowed her with the secret of concentrated study. If her cheerful attitude has any significance, it must be that study has no ill effects on one's capacity for enjoying life. Esther is the lawyer of her class.

Basketball	.	1	Art Club	.	3, 4
Kinsprits	.	4	Glee Club	.	1
Press Club	.	4	Student Council	.	1
			Social Committee	.	2

RUTH GREENWOOD HAMILTON

Mount Vernon, Maine

KINDERGARTEN

Ruth deprived us of a great deal of her college life. An experienced teacher, she came to us last September to earn her degree. Although we don't know her as well as we'd like to, we know her as a conscientious student, a good pal, and a possessor of a personality that is sure to win the hearts of her pupils.



MARY FRANCES HANLEY

44 Tower Street Pawtucket, R. I.

MATHEMATICS

Lucky indeed will be the pupils who learn the intricacies of Math under Mary's supervision. Not only in Math, however, but in every study, Mary has scored high marks. Her lessons never seem to bother her too much as is evidenced by her ever-present dimples. Mary is quiet in appearance, yet in her company one can never be dull, for Mary always has some amusing incident to relate.

Student Council	.	.	Snap-shot Committee, RICOLED	.	2
				.	4



RICOLEA 1931



DOROTHY FRANCES HAYES

28 Marlborough Avenue Providence, R. I.
DEBATING — MATHEMATICS

Dot is the first of our class twins, alphabetically speaking. Tall, blonde, brilliant, and always on the job for work or fun. Dot is especially efficient in debating and math. In her four years at college, A's have predominated on her little white card. A keen sense of humor, an even disposition, and a pleasing personality make Dot outstanding. Along with her twin, she is one of the most active Press Club as well as Debating and Dramatic League members.

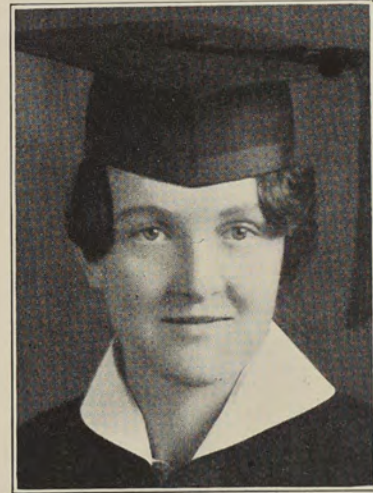
Class Treasurer 4	Press Club, Secretary 4
Basketball 1	Dramatic League 2, 3, 4
Kinsprits 4	Student Council 2, 3
Debating Team 3	
Chairman, Write-up Committee, RICOLEA 4	

MARY JOSEPHINE HAYES

28 Marlborough Avenue Providence, R. I.
MATHEMATICS — DEBATING

Here's Mary, the second half of the popular twins, distinguished from Dot only by the most discerning observers. Just as they are alike in looks, so the twins resemble each other in brains and all the points that go to make a good sport. Mary is always ready for fun, but her love of a good time doesn't keep her from winning the highest marks. Efficient, capable, and cheerful, Mary has done a great deal for her Alma Mater.

Dramatic League 2, 3, 4	Press Club, Secretary 4
Kinsprits 4	Student Council 1, 2, 4
Basketball 1	Class Vice-President 3
Press Club, President 4	News Editor, ANCHOR 4



VIRGINIA STOKES HOLLIHAN

1 Rhode Island Avenue Providence, R. I.
KINDERGARTEN

Voilà the auburn-haired Virginia, who contradicts all rules common to persons with her coiffure. It is seldom, if ever, that "Ginny" displays to her classmates anything but a smiling countenance. Every morning sees Virginia arrive at school, daintiness personified, with a gay salute to start the day; every night, even after a long, wearisome day, Virginia says "Au revoir," still with a gay salute. Do you notice a pensive, far-away look? Of course, there's a reason; in fact, six hundred miles. Don't fret, Ginny, time flies and six hundred miles isn't far in these days.

Kinsprits	4
---------------------	---



RECOLLED 1931



ETHEL BERNICE JACKSON

10 School Street Newport, Rhode Island
ENGLISH

“Neither rhyme nor reason can express
How much humor she doth possess.”

Happy-go-lucky, cheerful and gay; these are but supplementary identities of Bernice's nature. A kindly feeling towards all and witty words are the secret of her success. Serious thought to duties is not shunned, however, for she aims always to do all tasks well and has maintained a fine record. R. I. C. E. will send her out a happy miss who will surely win the hearts of her pupils and inspire them to high ideals and achievements.

Kinsprits 4

EDITH WILHELMINA JOHNSON

Clay Court Newport, R. I.
MATHEMATICS

Edith is quite demure and not especially given to boisterous actions, but she has all the characteristics of a real friend. She has chummed with Julia during the four years of college—in fact, their loyalty and steadfastness to each other have earned for them the title of the “Heavenly Twins.” These admirable qualities will undoubtedly carry over to the teaching profession and make two understanding, sympathetic teachers. Edith's favorite subject, like Julia's, is mathematics.

Kinsprits 4



LUCY HOWARD KEE

Long Lane Warren, R. I.
GEOGRAPHY

We all know Lucy—our famous blonde. She and her friend Kate are constantly rushing here and there, ever in a hurry. Lucy's knowledge of the old globe is outstanding and no doubt in the future she will make use of her stored information by traveling to the actual scenes about which she knows considerable. Till such a thing is possible, she will share this knowledge with the children whom she plans to teach.

Basketball 4
Kinsprits 4
Press Club 4
Art Club 4
Student Council 3



RECOLLED 1931



BARBARA KENYON

Alton,

Rhode Island

HISTORY

Barbara has traveled a long distance each day to get to college, but we are sure she has been amply paid for her trouble. Barbara is one of the most clever girls of the class. She can be quite serious, but Barbara is always ready for fun and has a keen sense of humor. She is gifted intellectually and artistically. She can play the piano well and is always ready and willing to entertain her friends.

Dramatic League	.	.	.	1, 2, 3
Kinsprits	.	.	.	4
Art Club	.	.	.	4
Cap and Gown Committee	.	.	.	4
Class Day Speaker	.	.	.	4

JULIA MARY KING

41 Berkely Avenue

Newport, R. I.

MATHEMATICS

We all know Julia, the well-dressed girl from Newport. On meeting Julia with Edith, one can never tell whether they are coming or going. Do we need to explain? Mathematics is Julia's chosen field, and we feel sure that she will be successful in teaching it next year when we are certain her kindness and patience will make her one of our outstanding teachers.

Kinsprits	.	.	.	4
Social Committee	.	.	.	3



ALICE BERTHA KOHL

277 Friendship Street

Providence, R. I.

ENGLISH

This charming young lady bears the reputation of "class fashion plate." She is possessed of an amiable disposition and, besides being another of the "Four Musketeers," has many friends among her classmates. Alice's scholastic record is unblemished, and her career as a teacher is bound to be equally fine.

Dramatic League	.	.	.	4
Glee Club	.	.	.	1
Kinsprits	.	.	.	4



RECOLEA 1931



RUTH FRANCES LEONARD

46 Ninth Street East Providence, R. I.
ENGLISH

What shall we do without Ruth to explain long words to us? Ruth brought fame to our class by acquiring the highest score ever achieved by a girl at R. I. C. E. in her vocabulary test. Her ability and interest in English were manifested to all by her presence in all elective courses in that subject. Her success as a teacher of her favorite subject is assured.

Press Club, Treasurer	4
Dramatic League, 2nd Vice-President	3, 4
Social Committee	3, 4
Snap-shot Committee, RICOLED	4

ALICE LIBERTY

136 Denver Street Pawtucket, R. I.
ENGLISH

All is quiet—then a laugh resounds throughout the room. Yes, the guilty person is Alice, for who else has a laugh just like that? Not that she hasn't her serious moments, too, for she aspires to teach English in Junior High School. We are very grateful to Alice for her unceasing efforts to make each social event a success.

Art Club	4
Dramatic League	2, 3
Glee Club	2, 3
Social Committee	3



ROSE MacANDREW

25 Dennis Avenue Edgewood, R. I.
ENGLISH

Have you ever seen a slim person with sparkling eyes and thick, dark hair, bustling down the corridor? It is Rose, one of our speediest workers and most enthusiastic members of the Senior Class. Her zest for teaching and her yearning for education will surely carry her far in her chosen field.

Kinsprits	4
---------------------	---



RECOLLED 1931



CATHERINE MADELINE McCARTHY

408 Orms Street

Providence, R. I.

ENGLISH

Behold Kate, one of the leaders in merriment and fun. She may always be counted upon for some humorous bit. Her ability in dramatics and public speaking must not be under-rated as all who saw her performance in "A Midsummer Night's Dream" will agree. Her ability in English has always been high, and we are sure that her knowledge of literature and poetry will lead her to great success.

Basketball	4
Kinsprits	4
Press Club	4
Dramatic League	3, 4
Social Committee	3, 4

RUTH EILEEN McCAULEY

362 Second Avenue

Woonsocket, R. I.

ENGLISH

A flurried rustle and a worried sigh and Miss Ruth comes to view. She is in a perpetual state of despair over some assignment or test. She has a tendency to be pessimistic that is held in check by her good sense. No matter how heavy her burden is, she is always ready to lend a helping hand to her friends in time of need. She is looking forward to her days as a school-marm.

Kinsprits	4
Nature Club	4



ALICE CARROLL McCORMICK

324 Taunton Avenue

East Providence, R. I.

MATHEMATICS

As our class President, until opportunity knocked and beckoned her into the field of junior high training, Alice proved to all her unusual ability as a leader. Her loyalty and unceasing work for her class were remarkable. Her ability as an actress is well known, particularly by those who have enjoyed her many performances as a member of the Dramatic League.

Class President	1, 2, 3, 4
Kinsprits	4
Dramatic League	1, 2, 3, 4
Glee Club	1
Student Council	1, 2, 3, 4
Debating Team	3, 4



RICOLED 1931



MARY VERONICA McDOUGALL

37 Legris Avenue

Pawtucket, R. I.

HISTORY

Now we come to Mary—the girl who has always done her share in brightening up things. Mary showed us how versatile she can be, when she developed, this year, into something resembling an art student—what nice big A's Miss Sherman gives. History holds no terrors for Mary, as anyone who has ever been in a history class with her can well testify. It was with great regret that we saw Mary leave us to do junior high training in her "home town"—where we are sure she will be a success. Here's to Mary, the good sport and the girl who insists she is of Scotch ancestry.

Basketball	1, 2
Kinsprits	4
Social Committee	3

MARGARET THERESA McGARRIGLE

180 Cowden Street

Central Falls, R. I.

HISTORY

Gentleness, understanding, patience, and sympathy, in fact, all the most important requisites of the finest sort of teacher are present in astounding quantities in this small, soft-spoken senior. We have implicit faith in her reliability as a confidante and her loyalty as a friend. She is as swift to comfort when you are "down in the dumps" as she is to offer her truly sincere congratulations if you are "sitting on top of the world."

Kinsprits	4
Advertising Staff, RICOLED	4



MARGUERITE MARY McGRAW

First Avenue

East Greenwich, R. I.

HISTORY

Our class, like every other, has had its "cliques." Marguerite, however, is not only a loyal member of one particular clique, but enjoys the distinction of being a part of all the various social groups of her class, since she is considered a friend by everyone. Her interests are varied. She excels in mathematics, is enthusiastic about dramatics, and affords children many pleasant hours by her clever story-telling.

Kinsprits	4
Class Vice-President	1, 2
Student Council	4
Social Committee	3, 4
Social Committee, Chairman	4



RECOLLED 1931



MARY CAMILLA McINERNEY

4 River Street Valley Falls, R. I.

PHYSICAL EDUCATION

Here is "Camillay" with the nimble fingers and the dancing feet—the girl who always has a pleasant smile and a cheerful greeting for everyone. Playing the piano is just second nature to Mary, for she never seems to look at the keys, but always strikes the right note. Mary's "children" at the Henry Barnard School take up a great deal of her time, and we know that she is just as successful when teaching them gym as she is while playing the piano.

Basketball	1, 2, 3, 4
Glee Club	1, 2, 3
Athletic Council, Vice-President	4
Social Committee	3

CLAIRE MARIE McKENNA

75 Plenty Street Providence, R. I.

ART

Claire Marie! the girl with the golden hair and sparkling personality—"Linda, the girl herself." Alas for the teaching profession! Claire (after a glance at the third finger of her left hand) has decided to take up the cudgels of domesticity. Her popularity may be vouched for by her election as President of the Student Council. Claire's performances in the dramatic presentations during the past two years have convinced us of her dramatic ability. Other fine arts claim her too, as her illustrations testify. Unlike Mary Angela, Claire's favorite outdoor sport is driving, especially down Angell Street hill. Cheerio, Claire, and may the best be yours.

Kinsprits	4	President	4
Art Club	3, 4	Dramatic League	1, 2, 3, 4
Debating Team, Alternate	2	Secretary	3
Student Council	2	President	4
Secretary	4	Ivy Oration	4



LORETTA RUTH McKENNA

1328 Douglas Avenue North Providence, R. I.

KINDERGARTEN

An ever-present smile, a pleasant disposition, and whole-hearted generosity are the chief characteristics of our Loretta. Loretta is just bubbling over with mirth and has a contagious smile that has drawn many of her classmates to her. Loretta fits well into any social group and at once becomes the center of attraction because of her sparkling wit and vitality.

Kinsprits	4
Dramatic League	4



RECOLLED 1931



MARY ELEANOR McMAHON

267 California Avenue Providence, R. I.

PSYCHOLOGY — HISTORY

Although Mary has been a member of our class but a year, we have found the time all too short. Mary spends a good part of her time on the third floor between Economics and the Art Room where she is a member of the famous stage decoration class. Mary has a constant smile and may be counted on for a cheery word at all times.

Glee Club 1, 2

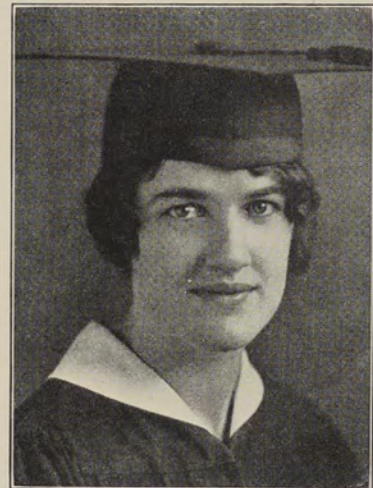
BEATRICE MARY McNAMEE

249 Washington Avenue Providence, R. I.

MATHEMATICS

Beatrice is a tall, slender, smiling young lady who, while being quiet and dignified, has won the friendship of her teachers and classmates. She has sensible tastes, and it would be hard to find a more sensible girl. Beatrice has little to say but what she says is always worth hearing.

Kinsprits	4
Press Club	4
Typist, RICOLED	4



MARY GERARD McNULTY

173 Rochambeau Avenue Providence, R. I.

HISTORY — MATHEMATICS

Pleasing, vivacious and charming, Mary has been a joy to all that have known her since her advent at R. I. C. E. Her dancing blue eyes have added merriment wherever she has been. Mary's artistic ability ranks among the highest and even extends to the decoration of miniature stages. Everyone with whom she has come in contact has found her to be a true friend and ever willing to assist, no matter how pressing her own work is.

Student Council	1, 2, 4
Basketball	1, 2
Kinsprits	4
Art Club	4
Glee Club	1, 2



RICOLED 1931



ROSE MAMIGONIAN

11 Cole Street Pawtucket, R. I.

ENGLISH—ART

Rose is gifted with a very distinct individuality which makes her interestingly different. One has only to look at the accompanying picture to discover her most prominent characteristics—a very gentle manner and a keen appreciation of the finer things of life. Although Rose has shown an active interest in all her subjects, she has excelled in art. Rose possesses an agreeable combination of social and scholarly qualities.

Kinsprits	4
Art Club	4
Glee Club	2, 3

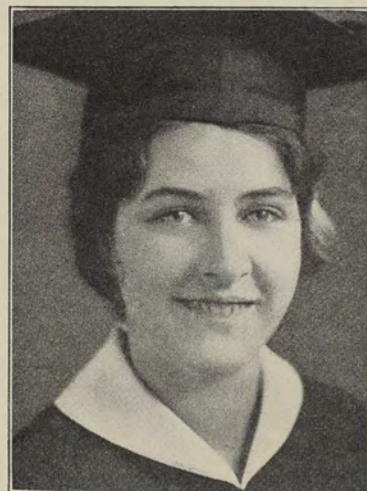
RUTH CAROLINE MATHEWSON

38 Radcliffe Avenue Providence, R. I.

ENGLISH — GEOGRAPHY

All of us at sometime or another have enjoyed her naïve remarks and questions in class, but those of us who know her best love her for the sincerity and frankness which are the chief elements of her innate sweetness. She will develop into the sort of teacher who will cultivate the spiritual and idealistic rather than the materialistic natures of her pupils. Her altruism and professional spirit are shown in her desire to teach in the hill schools of Kentucky.

Dramatic League	4
Kinsprits	4
Nature Club	2, 3, 4



MARION LOUISE MILAN

1582 Westminster Street Providence, R. I.

PSYCHOLOGY

Who doesn't know Marion—our poised, nonchalant classmate? Marion is full of life and fun and has often proved it to us. Haven't you heard the rumor that Marion, plus a pair of spectacles and a distinctly professional air—such as she only could assume—sent a certain history class into hysterical laughter? Don't make the mistake of thinking there is nothing more to Marion than fun. Those who know her can tell what a pleasing personality and captivating manner she possesses.

Basketball	.	.	1	Class Vice-President	.	1
Kinsprits	.	.	4	Social Committee	.	4
Photograph Committee, RICOLED				.	.	4



RICOLED 1931



ELEANOR VIOLA MILLER

234 Alabama Avenue Providence, R. I.

NATURE — HEALTH

Hail to the president of the Nature Club! A true lover of nature is Eleanor. She is capable and efficient in many lines, but her excellent work as head of the Nature Club has proved a definite adaptability in that line. Eleanor has specialized in kindergarten work during her college course, and we surely envy the lucky youngsters who learn the intricacies of nature under her direction.

Nature Club	1, 2, 3, 4
President	4
Kinsprits	4
Glee Club	4
Student Council	4

RUTH ELIZABETH MONAHAN

80 Wisdom Avenue Providence, R. I.

MATHEMATICS

Subtle Ruth! and how you simply have to like her, for here is one who personifies versatility and an all-round good sport. She is happy, jolly, and distinctly a classmate whom we'll always love and remember, especially as a skilful parliamentarian. Four times our class president is ample evidence of the place she holds in the hearts of her classmates. Sparkling, wit, effervescing personality, and a dominating character combine to make Ruth just Ruth.

Class President	1, 2, 3, 4	Dramatic League	4
Basketball	1, 4	Glee Club	1, 4
Kinsprits	4	Student Council	1, 2, 3, 4
ANCHOR, Business Manager	2		



MILDRED FRANCES MORIARTY

26 Dunedin Street Providence, R. I.

HISTORY

Words often inadequately express a thought, and such is the case when it comes to describing Mildred, confidante par excellence, not from choice but from necessity, as her friends have many woes and joys that they insist Mildred share. As a student she excels. That she is a specialist in history was proved when she displayed a course of study not so long ago. The "Decemites" are never complete without the tall, dark-haired girl, Mildred, who undoubtedly will accomplish whatever aim she sets up for herself.

Basketball	1	Glee Club	1
Kinsprits	4	Student Council	3
Class Will Committee, RICOLED	4		



RECOLLED 1931



MARGARET MARY MULHOLLAND

57 Waterman Street Valley Falls, R. I.

MATHEMATICS — ENGLISH

Our demure Margaret, somewhat reserved at first, but not so quiet once one gets to know her. Margaret takes life seriously but is appreciative of humor in its proper time and place. All the elements of an excellent teacher are found in our Margaret, and we are sure she will attain the success such a character deserves.

Kinsprits	4
Nature Club	2

MARION ELIZABETH MULVANEY

59 Eighth Street Providence, R. I.

ENGLISH — HISTORY

Who made that wise-crack? Marion, of course. Full of fun is our Marion, and as lovable as you make 'em. She owns a set of eyes that make you think, for much goes on in her fertile brain which she doesn't tell. We say good-bye to Marion with a feeling of regret, for she will leave a place in our hearts difficult to fill.

Kinsprits	4
Art Club, Secretary	4
Glee Club	1, 2
Student Council	2, 3
Social Committee	3, 4
Chairman	4



GERTRUDE VERONICA BARBARA MURPHY

795 Harris Avenue Woonsocket, R. I.

ENGLISH

Among our class midgets comes the little Woonsocket miss, Gert. The brisk tap-tapping of spike heels and a tuneful cascade of giggles proclaim that Gert has arrived on the scene. She generally has a long tale or anecdote to pour into willing ears. The relating of it is very dramatic and calls forth much merriment. There is a great deal of energy bottled up in that tiny girl. It will stand her in good stead when she finds her pupils towering above her. Better invest in stilts, little lady.

Kinsprits	4
Nature Club	4



RECOLLED 1931



MARY BARBARA MURRAY

82 Abbott Street

Providence, R. I.

ENGLISH

Unassuming and reserved, Barbara is seldom heard, but when she speaks you may be sure something worthwhile is in store. Barbara has not only been a student at R. I. C. E., but has also attended Simmons College, Boston University, Columbia University, and is a graduate of Bryant Stratton College. Barbara does not keep this store of knowledge to herself, but willingly shares it with all who desire it.

Glee Club	1, 2
Kinsprits, Scribe	4
Student Council	3
Production Manager, ANCHOR	4

MAE RITA MURRAY

202 Sabin Street

Pawtucket, R. I.

ENGLISH

Quiet, shy and demure, Mae has nevertheless made many friends while at R. I. C. E. During the last six months of her college career, she left us to train in English at Samuel Slater Junior High. Pawtucket is indeed fortunate to have Mae listed among its teachers.

Dramatic League	2, 3, 4
Kinsprits	4
Glee Club	1, 2, 3, 4
Social Committee	1, 2, 3



ROSEMARY MARGARET MURRAY

144 Wood Street

Providence, R. I.

PSYCHOLOGY

"A happy heart,
A smiling face,
And some rounds of laughter in between."

Rosemary has made up her mind to combine pleasure and work, which combination is a very successful one. It is said that most people are about as happy as they want to be. By being industrious, she has found a way to happiness which is expressed in a succession of mirthful chuckles every time you meet her.

Basketball	.	1	Press Club	.	4
Kinsprits	.	4	Nature Club	.	2
Glee Club	2



RICOLED 1931



MARY ANGELA NESTOR

710 North Main Street Providence, R. I.

HISTORY

Obliging and capable—those qualities describe Mary to a “T.” In four years, as secretary of this class, Mary has followed closely and recorded all our activities. A marked ability for the fine arts has been evident on more than one occasion. Whenever there was a calling for the artistic in either gym decorations or posters, Mary was most willing, not only to lend a hand, but even to bear the burden if it helped.

Class Secretary	1, 2, 3, 4	Glee Club	. 1, 2
Basketball	. . . 1, 2	Class Treasurer	3
Kinsprits	. . . 4	Art Club	. 4
Social Committee		1
Circulation Committee, RICOLED		4

MARY EVELYN O'BRIEN

7 Geldard Street Valley Falls, R. I.

ENGLISH AND FRENCH

Quiet and shy—nevertheless, one of the clever. Mary is our class poet, and under the guidance of her pen our class songs have often found their words. Long will we remember her—quiet one minute and surprising us with her unexpected wit the next. Her ability in languages has always been remarkable, and no doubt we shall some day in the near future find her teaching her favorite subjects in Junior High School.

Kinsprits, Presiding Officer	4
Nature Club	1, 2, 3
Dramatic League 1, 2
Student Council	2, 3, 4
RICOLED Board, Assistant Sec.-Treas.	4



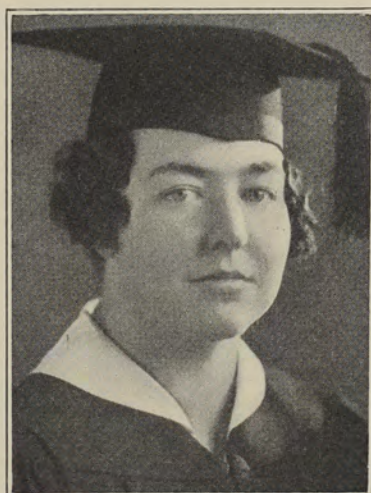
MARGARET MAGUIRE ORME

19 Preston Street Providence, R. I.

GEOGRAPHY

Margaret, the only member of the Senior Class who was among the intelligent ones when a certain professor spoke of the Lapis Collige! Whether or not Margaret is a member of that college has remained a mystery, but we all hope that some day she may divulge its secret. To Margaret we award the office of Class warden, for she it was who always kept the keys—not silently, however, much to the despair of some of her classmates. Margaret has always had a sunny disposition, and we are sure she will help to cheer her own classes wherever she may be.

Kinsprits	4
Nature Club	2, 3, 4
Dramatic League	4



RICOLED 1931



RUTH A. PADDOCK

15 Glen Road Providence, Rhode Island

DRAMATICS

Who doesn't know Ruth, whose dramatic ability has been seen on the stage so many times? Besides being an actress, she has displayed her talent along other lines. Competently, she filled the position of the Business Manager of the RICOLED. Ruth is sure to be found in the middle of a group of debaters, for in that she is outstanding. To characterize Ruth in a few words, we can say that she is a good, all-around sport, willing to help any person to climb the ladder of success.

Basketball	. 1	Nature Club	. 1, 2, 3, 4
Kinsprits	. 4	Dramatic League	1, 2, 3, 4
Press Club	. 4	Student Council	. 3, 4
ANCHOR Board 3		
RICOLED Board, Business Manager	. 4		

KATHRYN LILLIAN PATT

Stillwater, Rhode Island

NATURE STUDY

To Patsy goes the honor of being truly charming. A pretty face, vivacity, and a gracious manner are all combined in Pat. She also has a sense of humor which she manages to display in Dr. Carroll's classes. This young lady always graces the social functions of our college, and we know she enjoys herself. Dr. Weston will certainly agree when we say that Pat is an excellent Nature student and teacher. Patsy is sure to succeed with her charming and gracious manner.

Kinsprits, Treasurer	. 4	Dramatic League	. 3
Press Club	. 4	Glee Club	. 2
Student Council 4		
Calendar Committee, RICOLED	. 4		



BESSIE PERCY

44 Tedward Avenue Westerly, R. I.

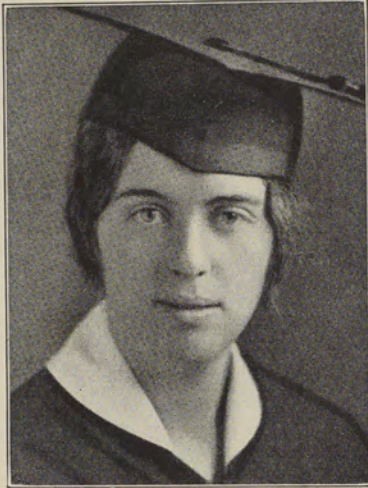
GEOGRAPHY

Geography! Just as it should be, for Bessie is a shark at this science. We who know her well are convinced that she can specialize in other fields. Bessie has only two weaknesses: one is her frequent desire to eat her lunch in the middle of the morning, and the other is catching the earliest train for Westerly. She is a girl of few words, but when she speaks, she means what she says.

Kinsprits 4
Press Club 4



RICOLED 1931



CATHERINE AVIS PHILLIPS

Harmony, Rhode Island
Music

Tall, blonde, and divinely gifted with musical ability—that is Avis. Everyone knows how her fingers wander over the keys in answer to any request whatsoever. Not only does Avis play well and teach effectively, but she also has a voice which harmonizes beautifully. To those who know her intimately, Avis is a great pal and a good sport. She is a staunch supporter of all college functions and a faithful, energetic Vice-President.

Kinsprits	4
Class Vice-President	3, 4
Write-up Committee, RICOLED	4

MARGARET ANNE QUINN

99 Sorrento Street Providence, R. I.

HISTORY

Our tall, graceful Margaret! She is quite industrious and scholastically successful, but not all of her time is given to studying. We have witnessed her proficiency as an actress, and we appreciate her cleverness in this line. A good student, full of fun, and a real pal is our Margaret.

Dramatic League	2, 3, 4
Kinsprits	4



LUCY MARY RANDA

Wakefield, Rhode Island

GEOGRAPHY

Unannounced and unexpected, Lucy arrived from distant South Kingstown in her Freshman year. In quite the same unassuming manner, she glided through her four years' stay and incidentally into the hearts of all her classmates. Her friendly nature is not her only outstanding characteristic as a perusal of her scholastic standing would show.

Kinsprits	4
Nature Club	4



RICOLED 1931



HELEN MARIE REILLEY

156 Wood Street Providence, R. I.

GEOGRAPHY

Helen is an example of what may be termed perennial good humor. A student when the occasion arises, we find her more deeply interested in the social side of life. When inclined, she is able to direct her abilities toward dramatics with a delightfully favorable effect. We hope the exigencies of school teaching will not mar Helen's suave manner.

Dramatic League, Pres., 2d Vice-Pres.	4
Kinsprits	4
Class Will Committee	4

KENNETH D. RILEY

192 Mauran Avenue East Providence, R. I.

MATHEMATICS — MUSIC

Ken has been a member of our class for only six months, owing to the fact that he is one of the few people making the college course, not in the traditional four years, but in three and a half. During this short time, his acts of helpfulness have been innumerable. As president of the Athletic Association, he has worked untiringly and whole-heartedly. We are glad that he has been a member of our class and are sure of his success in the future.

President of Athletic Council	4
Captain of Basketball Team	3, 4
Dramatic League	2, 3, 4
Student Council	4
Debating Team	2
Faculty Personals Committee, RICOLED	4



ELIZABETH JOAN ROARKE

21 Harris Avenue West Warwick, R. I.

ENGLISH

Lib is one of those people who can always be depended upon for support and help. Lib is a typical college girl—full of pep, ready for any and everything, but at heart real earnest and ambitious. She may be seen at any time dashing around the building with a questioning frown on her brow, in quest of knowledge to aid her on her way.

Basketball	1
Kinsprits	4
Press Club	4



RICOLED 1931

COSMA LIBERA RUGA

28 Tower Street

Westerly, R. I.

ENGLISH



Libera's earnest black eyes are a key to her real character. They also account for her many friends. Libera's conscientiousness and perseverance make her a real student. She is one of those fortunate people who are always prepared for any kind of weather. Yet she is very kind-hearted and generous to those of us who are not quite prepared. Although Libera is specializing in English, her talents are not limited to this field alone. She is sure to succeed in anything she undertakes.

Kinsprits	4
Press Club	4
Social Committee	3
Chairman, Faculty Personals Committee, RICOLED	4

MARGARET AGNES RYDER

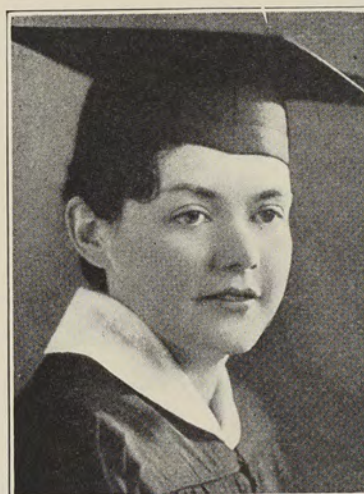
100 Conanicus Street

North Tiverton, R. I.

ART

The Class of '31 is rich in artists, and not among the least of these is Peg. During her four years at college, Peg has been a faithful attendant at all college dances and other social affairs. She is a congenial lady and has done all she could to make a success of activities with which she has had anything to do.

Art Club, Vice-President	4
Kinsprits	4
Press Club	4
Student Council	4
Snap-shot Committee, RICOLED	4



MARY GERTRUDE RYNN

75 Boyden Street

Woonsocket, R. I.

ART



Need any art done? Ask Mary, our clever artist, for she never fails a friend. If you want to find Mary, go to the Art Department. In classes, she listens very demurely to her instructors while her skillful fingers, through the means of a mere pen or pencil, adorn the pages of her notebooks with clever sketches and modernistic designs. Any class would be inspired under her enthusiastic teaching. Mary has done earnest and successful work as editor of the RICOLED and her future success is a surety.

RICOLED Board, Editor-in-Chief	4
Basketball	1, 2
Kinsprits	4
ANCHOR Board	2
Class Correspondent — Humor Editor	

RECOLLED 1931



LILLIAN ROSE SHAW

83 Greenville Avenue Manton, R. I.

SCIENCE AND MATHEMATICS

When a fellow needs a friend, Lil is the kind of person who always responds, and we are all very fond of her. A list of adjectives best describes our classmate: quiet, sincere, friendly, and conscientious. In the classroom, her hobby is nature work; in the open, skating and hiking. Her pleasing personality and whole-hearted spirit have been two causes of her popularity among her friends.

Kinsprits	4
Nature Club	2, 3, 4
Glee Club	3, 4

DORIS ELIZABETH SIMMONS

Little Compton, Rhode Island

ENGLISH

“Dorsie,” as her most intimate friends call her, comes from Rhode Island’s quaint town, Little Compton. She is always happy, but we think she is happiest when browsing through poetry books. “Dorsie” is one of those rare types who take things as they come and do not waste energy worrying. We find her very quiet, and we hear that she is quiet at the “Y”, but behind it all we can catch the twinkle in her eyes, and so we understand.

Basketball	1, 2
Kinsprits	4



MARINA FRANCES SINISCALCHI

77 Prospect Hill Avenue Natick, R. I.

MATHEMATICS — PSYCHOLOGY

Stop! Look! Listen! Here they come! Rena and her pal—giggling as usual. Rena is vivacious and lovable, yet sedate and capable. Her greatest weakness is time. “Never hurry,” is her slogan. She generally reaches classes, trains, etc., on the last stroke of the bell. Listed among her favorite pastimes are eating, giggling and “taking care” of Beulah.

Nature Club	2
-------------	---	---	---	---	---



RECOLED 1931



ANNA CECELIA SULLIVAN

13 Bradford Avenue Newport, R. I.

HISTORY

Who is this dainty creature? It's none other than "Pat," the great explainer of all times. Nothing is too difficult for her, even to explaining the mechanism of a water sprinkler. She has proved herself to be a most capable treasurer and has kept the financial status of the Class of '31 on a high level.

Kinsprits	4
Press Club President	4
Art Club, Chairman Social Committee	4
Student Council	3, 4
Class Treasurer	4
ANCHOR Board, News Editor	4
RICOLED Board, Associate Business Mgr.	4

IRENE LOUISE MARY SULLIVAN

83 Byfield Street Providence, R. I.

ENGLISH

A pretty, blue-eyed, enjoyable demoiselle is our Irene. The least that can be said about her is that she is a combination of unusual abilities. She stands out as a student, yet this interferes not with her outside social life. The saying "Cheerfulness is an offshoot of wisdom," is rightly applicable to Irene, for she rarely frowns or worries over anything; yet she succeeds in getting results—and fine ones. Something is learned everytime she opens a book. There is but this to be said, that those who know her best appreciate her most.

Kinsprits	4
Dramatic League	3
Debating Team	1



CATHERINE HORTENSE SUTTON

148 Peirce Street East Greenwich, R. I.

GEOGRAPHY

It is indeed a pleasure to write one's impressions of "Horty," our little East Greenwich miss. In these artificial days, there are only a few compelling people who become so sincerely bound up in every task to which they are assigned that their determination becomes contagious. Horty is of that rare and valued type. Her conscientiousness has enabled her to complete the college course in three and a half years. Her intimate pals will acquaint you with a warmth of affection, sympathy, understanding, and academic ability that was ever ready for those who sought her willing aid.

Kinsprits	4
Nature Club	1, 2
Art Club	4



RICOLED 1931



CHARLOTTE MAE SUZMAN

547 Hope Street

Bristol, R. I.

HISTORY — ART

Just listen for a moment! Who is that raising her voice in a burst of song? Why, Charlotte, of course, giving her voice its daily dozen. Charlotte is such a happy creature that she naturally expresses herself in song—sometimes to our sorrow. Charlotte has brightened many of our classes with her mirthful laugh, which is often heard—usually when everyone else is silent. The Reserve Library owes its quiet atmosphere to the fact that Charlotte very often frequents it. Another of Charlotte's pleasant habits is to appear at college four days out of five arrayed in "another new dress."

Basketball 1, 2	Kinsprits 4
Glee Club 2
Social Committee 1, 2, 3

MARGUERITE HONORAH TEUBERT

147 Pomano Avenue

Providence, R. I.

HISTORY

Here's Peg, that neat five-foot combination of brilliancy and witticism. Peg is one of our best entertainers and has done a great deal to make our college years happy ones. She is a good teacher, thoroughly human, very lovable, and a fine friend.

Kinsprits	4
Press Club, Vice-President	4
Cap and Gown Committee	4



DOROTHY MARY THORNTON

52 John Street

Valley Falls, R. I.

All hail to Dorothy from the big town of Cumberland. She it is who commuted by train and trolley with her friend, Mary, for four long years. Dorothy's ability in English is unquestioned, and, during her Senior year, she proved herself a capable assistant in her favorite subject. Her vocabulary and reading list were always a source of envy as she glibly made use of them in Senior Literature. During her stay at R. I. C. E., she has been a patron of all social affairs, at which she always seems to have a most enjoyable time among her many friends.

Kinsprits	4
Nature Club	1, 2
Social Committee	4
RICOLED Publicity Committee	4



RECOLLED 1931



MARY THORNTON

1028 Main Street West Warwick, R. I.

MUSIC

Smiles, life and versatility. Here is Mary. She has been one of the leading members of our class since we were freshmen. The list of offices she has held gives you merely an idea of her popularity. Her pleasing manner and optimism would certainly make a pessimist accept her faith in things as they should be. As far as musical ability is concerned, Mary has it in an overwhelming quantity. The class certainly owes much to Mary in the winning of song contests.

Class President 3, 4	Dramatic League 2, 3, 4
Kinsprits, President 4	Student Council 1, 2, 3, 4
Press Club 4	Vice President 4
Art Club 4	Chairman Social Com. 1, 2, 3

EVA LUTHENIA TODSEN

Lawton Avenue Tiverton, R. I.

HISTORY

The Class of '31 numbers among its members from Tiverton, Eva, who is the personification of kindness and thoughtfulness. She is heard from very seldom, but is always ready to lend a helping hand when it is needed. This outstanding quality will, we are certain, lead Eva far in her future endeavors.



ANNE TROBERMAN

160 Superior Street Providence, R. I.

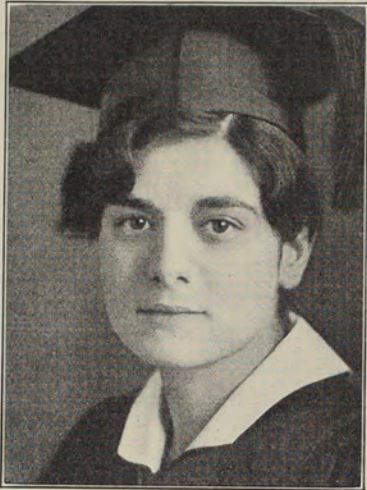
HISTORY — ENGLISH

Anne has two distinct sides to her nature. She can be one of the best of students in working diligently to attain real success scholastically and is equally clever when her work is done, in bringing out the lighter side of her nature in a round of entertainments for her many friends. Anne is particularly interested in English and her pupils will be indeed fortunate to study under a girl of such versatility.

Kinsprits	4
Press Club	4
Dramatic League	2, 3, 4



RECOLLED 1931



ANGELA ASSUNTA VALLONE

1330 Cranston Street Cranston, R. I.

HISTORY — ENGLISH

Although Angela's most distinguishing characteristic has been her earnestness and desire for knowledge, most of her classmates will remember her as the enigma of the Practical Law class. Many a dull period has Angela enlivened by her naïve questions, and we wonder if she is not responsible for many a gray hair in the head of a certain professor. While levity has its place in Angela's character, her real objective is success.

Kinsprits	4
Italian Club	4

MARY P. VINACCO

1134 Plainfield Street Thornton, R. I.

ENGLISH

"Small of stature—not so in deed."

A friend's friend—a true friend, earnest, ever-willing to lend a helping hand. Mary is one of our good-natured classmates who is very serious and conscientious about her work, aiming always for the most and best. Although of quiet demeanor, Mary does not lose out on the social side, for she certainly appreciates fun and a good time.

"She hath a natural, wise sincerity—a simple truthfulness."

Kinsprits	4
Nature Club	2, 3, 4
Art	4



ESTHER HELEN WALKER

43 Alexander Street North Providence, R. I.

ENGLISH

We all know that most people possess a certain degree of courage and perseverance, but the amount that Esther has within her is enormous. We became aware of this when during her last few weeks at college, she was forced to go among us on crutches. Undaunted, she carried on her way, shrinking from nothing and entering whole-heartedly into all our pre-graduation festivities.

Kinsprits	4
Art Club	4



RICOLED 1931

MARION CLAIRE WILLIAMS



11 Braman Street

Providence, R. I.

ART

Graceful, refined, friendly, and helpful. These are but few of the adjectives that can describe Marion, for she is another faithful believer in that time-old adage: "A friend in need is a friend indeed." Whether it be in art or in other activities, Marion is in the forefront to lend a helping hand. Capably, she has filled the position of Circulation and Subscription Manager on The ANCHOR staff. Her rare talent in art has revealed itself through her many drawings which have been seen in the art room.

Kinsprits 4	Student Council 4
Art Club 4	Dramatic League
ANCHOR Board 3, 4	
Circulation and Subscription Mgr.	
Art Editor, RICOLED 4	

GRACE ALMA WILLIAMSON

5 Olympia Avenue

North Providence, R. I.

MUSIC — PSYCHOLOGY

"Music washes away from the soul the dust of everyday life." These few words aptly introduce our petite violinist. Her ability along this line has been demonstrated a number of times and admirably appreciated by the student body and faculty of the college. Our auburn-haired maiden is the vivacious and temperamental type—an expression of her musical talent.

Nature Club 4	
Dramatic League 2, 3, 4	
Violinist in College Trio	



The Phantom Roll

- | | |
|------------------|---------------------|
| LILLIAN BLISTEIN | DOROTHY LAROE |
| GRACE CALLANAN | MATILDA McDOUGAL |
| HELEN CAREY | MARY McKENNA |
| MARY CASEY | EDNA McLAUGHLIN |
| NANCY CHASE | MARY QUINN |
| MARIE DUNN | FLORENCE RICHARDSON |
| AMIE ELDREDGE | RUTH SALTZMAN |
| EDNA GAHAN | RUTH SANDERSON |
| OLIVE HOFIDITZ | MARY SWANSON |
| ANNA KRITZ | ETHEL WARBURTON |



THE FAIRIES' DELL

I have found the haunt of the fairies—
 Just a little wooded dell;
But its floor is carpeted, darling,
 With lilies and many a bluebell.
A gay little brook rambles through it.
 Its roof is a bit of blue sky;
And the little folk hide in the flowers
 Till the feet of the world have passed by.

MARY THORNTON, '31.

I'VE A BIT OF THE SKY

I've a bit of the sky,
 And it lies in my garden.
It makes people sigh;
 I've a bit of the sky.
Where the blue gentians high
 Beg forget-me-nots' pardon,
I've a bit of the sky,
 And it lies in my garden.

MARY G. RYNN, '31.



JOY AND SADNESS

Sadness and darkness
 Are clouds which gather before the rain;
Joy and happiness
 Make the rainbow when it clears again.

ANGELA VALLONE, '31.

THOUGHT AT EVENING

Twilight in softest gray
 Fell o'er the city;
Veil-like, a mist, it lay,
 Twilight in softest gray,
Between pale night and flushed day,
 A pensiveness pretty—
Twilight in softest gray
 Fell o'er the city.

MARY O'BRIEN, '31.



Farewell

Farewell! Is it time to say it?
Our sojourn here is done;
Four happy years are lived
And dreamed-of victories won.
Friendships blossom round us,
Love bids us Godspeed;
Yet, we linger on the threshold
Loathe to leave indeed.

Good-by to days of sunshine,
To tranquil days of work and play,
To precious hours in memories steeped—
These parting words we're forced to say.
Time, your course is swift with us,
Too soon you end our student days;
But for the joy you've given us,
Indebted we shall be always.

Into the Past, we fondly smile,
Tenderly viewing tasks that are done,
Glad in the mirth that we have shared,
Knowing our spirit to be one.
Alma Mater, our souls shall live in you,
For you have made us ever yours
By training us in heart and mind
To be both dreamers and doers.

Now, the future dawns before us,
Curtain of haze and light that it is,
Concealing within its mysterious folds,
The brightness, the beauty, the glory that is
For all in this class of thirty-one
Classmates, the curtain trembles to part—
Stand we together in gracious farewell,
Hand clasping hand, heart beating with heart!

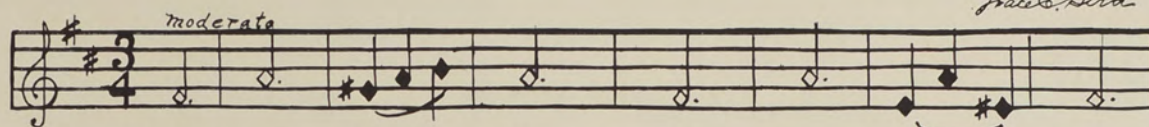
MARY E. O'BRIEN.

Farewell Waltz

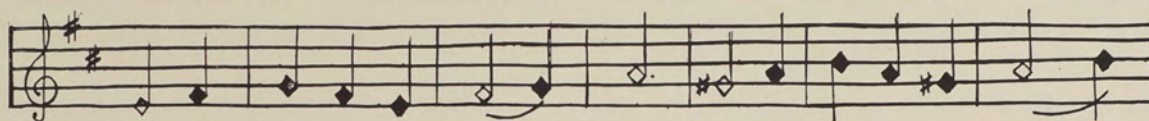
Dedicated to the class of 1931 and its successors

Grace E. Bird

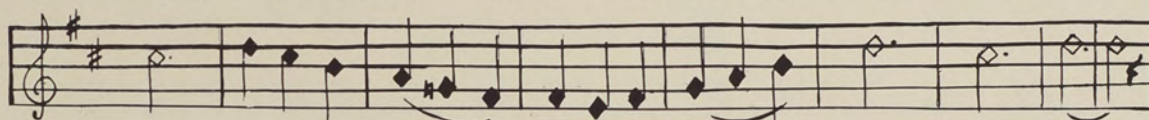
moderate



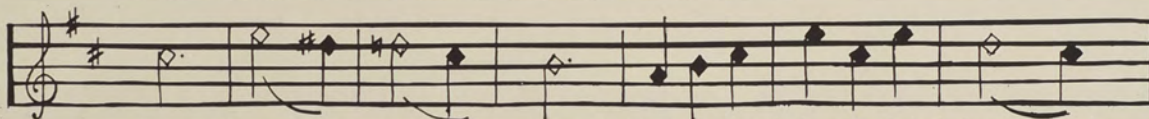
Friends and classmates so dear Now our parting draws near.



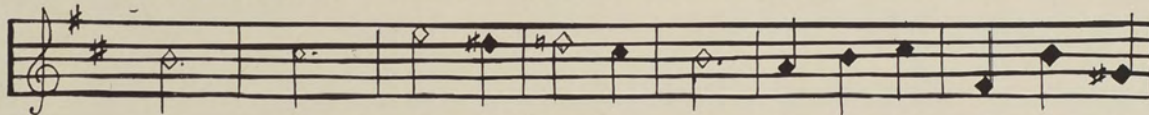
Deep in mem'ry will always dwell This fond hour when we said fare-



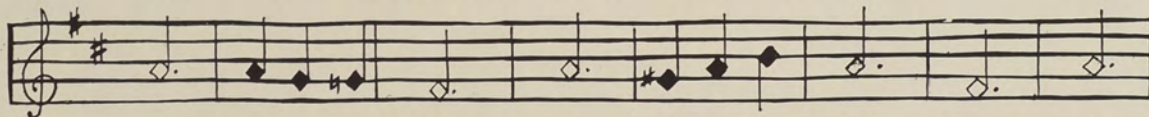
well. Though we are parted we'll always re member R. I. C. E.



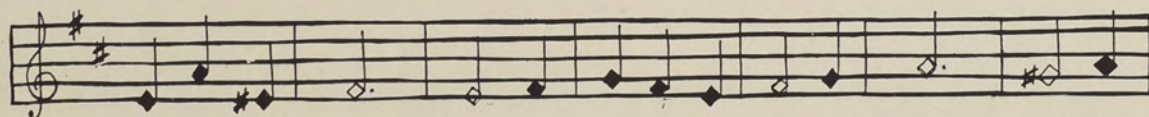
Down through the coming years Filled with their joys and their hopes and



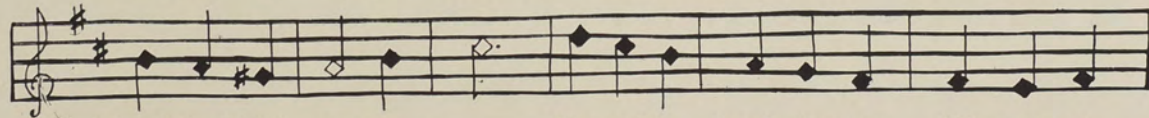
fears, Our thoughts will turn to thee, To dear old R. I. C.



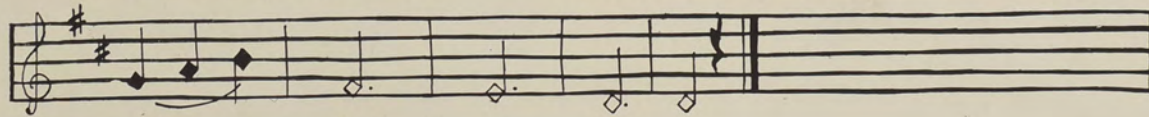
E. Hail to each happy day Spent in



work and in play Here in comradeship fine and true, Where we



pledge friendship's vows a - new. Now with a hand-clasp we bid one an-



other a fond a - dieu.

Marion C. Williams '31



Cheer Song

Con spirito

We
All

shout for a col - lege that proud - ly stands On the sum - mit of fair re -
down through the years shall re - sound the call That sum - mons our glo - rious

cresc.

nown, The bright - est of all Rhode Is - land's ra - dian't stars That
youth To fit for the ser - vice of our grand old State As

CHORUS

f marcato

shine in her hon - ored crown. Then we'll give three cheers for
lead - ers to light and truth.

cresc.

old R. I. C E. True and loy - al, hers for - ev - er we'll be Our

marcato

col - ors, the gold and white, We prom - ise to face the fight And win it with cour - age

ff

strong! Rah! Rah! Rah! From her doors, a nev - er - end - ing stream, The

RECOLLA 1931

cresc.

lines march forth and bold - ly fol - low the gleam; We'll lift high the stan - dard,

f

"Up - ward and On - ward," As we bear the ban - ner of Hope a long.

Alma Mater

mf *cresc.*

Dear Al - ma Ma - ter wise and kind, To thy fair name shall e'er be - long Our
When we must leave thy shel - t'ring walls, O - bey - ing Du - ty's stern be - hest, Our

mf

grate - ful prais - es and our love, The trib - ute of our song, Thou guar - dian of the
em - blem bright the flag of Hope, Our mis - sion man - i - fest, Each kin - dles at the

mf

sa - cred shrine Of truth that makes us free, We cher - ish thy be - lov - ed fame And
al - tar fires The flam - ing torch of truth, And thus pre - pared, no fear as - sails The

cresc. *mf* *cresc.*

pledge our loy - al - ty. R. I. C. E. all hail to thee! All hail to Al - ma
daunt - less heart of youth.

f

Ma - ter' En - shrin'd thou art with - in the heart Of ev - 'ry son and daugh - ter.



Class Calendar

- | | | |
|-----------|-------|--|
| September | 8 | Opening day with old and new faces,
Bright, light paint in all sorts of places! |
| September | 15 | Student Council President, Miss Anna Flynn.
Era of new practices about to begin! |
| October | 13 | Columbus Day we observe by vacation—
A long weekend spent with glee and elation. |
| October | 14 | The bursting of water pipes—makes way for a spree;
Then hies for the movies most all of R. I. C. E. |
| October | 31 | The “Famous” Institute—here gather (?) the teachers
To listen to professors, doctors and preachers! |
| November | 14 | End of first quarter, the marks soon appeared.
Many were pleased about some they had feared. |
| November | 21 | All College Dance—excitement in classes—
Wavy hair appeared on many straight-haired lasses! |
| November | 26 | The Glee Club presented to us this day
Sublime music in its own splendid way. |
| November | 27 | Have you read THE ANCHOR? This the popular cry.
It’s well worth the price—hurry, go buy! |
| November | 27-29 | Thanksgiving recess and there is a spirit of old.
Appetites will be ravenous—so we are told. |
| December | 20 | Carols were sung by the students in chapel
Holly and berries appeared in each lapel. |
| December | 20-27 | Christmas Vacation—whoops, my dear!
The jolliest season of all the year. |
| January | 6-7 | The hit of the season—Dramatic Club Show—
A “Holiday” dear friends—but a stage one, you know. |
| January | 7 | The seniors today were the proudest in town
For each one donned his well-earned cap and gown.
This was followed by the Junior A tea,
For to wear the block hat is an honor you see. |
| January | 14 | A tea for the Faculty sponsored by Senior A’s
Their time together is just a few days. |
| January | 15 | Miss Mary Thornton elected president of Kinsprits,
A Senior society of knowledge and wits. |

RECOLLED

1931

- February 13 The Senior A's ask you to please come and prance
At their first of the season—a Valentine Dance.
- February 14 Student Council presidency again must be filled
Claire McKenna is chosen, the college so willed.
- February 23 George Washington cut down a small cherry tree,
Result—one holiday for you and for me.
- March 2-6 Posing for pictures took much of the time
Of freshest of freshman to seniors sublime!
- March 17 St. Patrick's Day—everywhere may be seen—
A bow or a bud of that dear old green!
- April 3-13 Time out to catch up with the shows
And sport our brand new Easter clothes.
- May 7 One more senior wish is granted.
Gowns are worn and caps are slanted.
- May 13-15 Juniors strive to entertain us
And surpass their own ambitions.
Week is passed by all attending
Teas, play, dance and exhibitions.
- May 27 Walls resound and rafters ring
All the classes have their fling
At trying for the silver prize
That is a treasure in all eyes.
- June 19 The year of years, the day of days!
Class Day for the Senior A's!
- June 21 Sermons and blessings on us descend
As Baccalaureate service comes to an end.
- June 22 New traditions are inaugurated
Ivy is planted and songs are sung.
Steps and gardens to Junior A's are dedicated;
Talk of a banquet is on every tongue.
- June 23 We our coveted degrees receive,
Happy that such a day can be;
Yet sorrow is with us as we leave
And bid fond farewell to R. I. C. E.

MADELINE C. BRIGGS,
KATHRYN PATT.



Class Will

We, the class of 1931, of Rhode Island College of Education, do hereby bequeath our last will and testament to the faculty and undergraduates of said college.

To Dr. Alger, we bequeath our unfailing loyalty, in memory of many happy hours spent under his guidance.

To Professor Craig, we leave our yearbook as a remembrance of the Class of 1931.

To Miss Emma Craig, we leave our appreciation for her advice and encouragement received during our training period.

To Professor Waite, we bequeath a secretary to check up on the "A. W. O. L. 'Parkers'."

To Miss Hill, we leave happy memories of her good will and kindness.

To Professor Tuttle, we leave a new draught-screen for his class room.

To Dr. Stevenson, we bequeath a model class which will not be an example of "concentrated stupidity."

To Professor Brown, we leave a treaty with the U. E. R. which when enforced, will eliminate one excuse for excessive chapel cuts.

To Professor Robinson, we leave some mimeographed copies of the graded poetry and reading lists.

To Dr. Carroll, we leave a class which will appreciate and readily understand his subtle jokes.

To Miss Langworthy, we leave a few more wands so that the girls at the end of the line may exercise with something more than their imagination.

To Miss Osborne, we bequeath a speedy class with a quick response to commands.

To Dr. Ross, we leave a medical spelling book for the use of her classes, in the hope that they will avail themselves of it in order to lessen the time she spends in correcting papers.

To Miss Loughery, we bequeath another model trio for her extension class. Three guesses as to who it might be.

To Miss Traver, we leave our regrets that we did not have the opportunity to know her better.

To Professor Cavicchia, we bequeath some handcuffs for his students in order that they may not thumb the vocabularies during class time.

To Dr. Weston, we leave a set of labels for the campus trees so that her students will recognize them.



To Miss Carlson, we leave a class which will not try to take advantage of her good nature.

To Dr. Bird, we bequeath the wish that next year's seniors will correct and score Intelligence Tests as well as we did.

To Miss Cuzner, we leave in confidence the many "tales of woe" to which she listened sympathetically.

To Miss Makepeace, we leave a little machine which will say, "Ninety in the morning for this book."

To Miss Thorpe, we bequeath the privilege of using our Freshman autobiographies as examples of literary excellence. (We admit conceit.)

To Miss Thompson, we leave another group of girls who will enjoy ice cream sodas in her charming company.

To Miss Ranger, we bequeath a fire-alarm to take the place of the bell in her room which is often so hard to hear.

To Professor Patterson, we bequeath a class in which no one has an edge on his voice.

To Professor Sherman, we leave the hope that in future years art assignments will be finished before they are due.

To Miss Swan, we leave a book entitled, "The Artists' Guide to Italy."

To Professor Hosmer, we bequeath an assembly which will enjoy practising hymns.

To Miss Waldron, we leave two bulletin boards for her assignments in Math.

To Professor Weber, we bequeath some seniors who have many hours free and are anxious to have conferences on senior practice.

To Professor Sinclair, we leave a classroom with separated chairs to save time and energy in arranging his classes.

To Mr. Baldwin, we leave a newly patented question box to take the place of his improvised one.

To Mrs. Small, we bequeath a new electric heater for the northwest corner of the gymnasium.

To Mrs. Coggins, we leave one Wednesday with one hundred percent attendance—also a bottle of smelling salts to help her recuperate.

To Mr. Ethier, we leave the privilege of maintaining his sartorial leadership among the male students of the college with the provision that he introduces no vogue bespeaking Harvard.

To Miss Russell, we leave a group of students who are satisfied with the daily menus.

To Miss Aldrich, we leave a stamp to help her sign train slips.

To Miss Baxt, we leave a messenger to track Seniors who have phone calls during free hours.

To Miss Snell, we leave some stilts and bells so that she may be seen and heard.



RECOLLED

1931

Helen Ashworth leaves her liking for "Chocolate Ice Cream Sodas" to anyone who can afford to buy one. Helen says they are very good.

Betty Campbell leaves her "Essay on Silence" to Marion Featherstone of the Junior A Class. We hope that she will enjoy using it as much as Betty did.

Catherine Casserly leaves her ability in the field of science to Catherine Martin of the Junior A Class.

Mabel Clough leaves the secret of her success in teaching music to Ellen Hall of the Freshman Class.

Gertrude Coleman bequeaths her ability to make the ANCHOR successful to its next editor.

Ethel Cronin leaves her ability to arrive late from an 8:30 class on Wednesday morning to anyone foolish enough to take a class at that unearthly hour.

Margaret Deery leaves her aptitude for making impromptu speeches in history to Adelaide Harson of the Junior B Class.

Evelyn Earnes bequeaths her monopoly on the history office to Frances Lynch of the Sophomore Class.

Ruth Fairbrother and Mary Griffin leave a certain skill in arranging programs with convenient free periods to Helen Arnold and Ethel Farrell of the Junior A Class.

Rose Finnegan bequeaths her sunny disposition to Helen Carroll of the Sophomore Class, with the stipulation that if Rose needs it, it will have to be returned.

Mary Germani leaves her intense liking for Americanization to the person who needs a one-hour elective for her program.

Esther Grossman leaves all her extra pencils to the psychology students. They will need them.

Beatrice Guilbault bequeaths her favorite place of "rendez-vous" to Evelyn Frey of the Sophomore Class.

Helen Hackett leaves her willingness to help others to Gertrude Sullivan of the Junior A Class.

Virginia Hollihan leaves all the inspiration she received from Wednesday Assembly periods to Helen Johnson of the Junior A Class.

Ruth McCauley leaves her worried appearance to Margaret Donahue of the Junior A Class.

Edna Gilmore leaves her ability to look nonchalant while holding a high note to Dot Gray of the Junior Class.

Eva Buonanno and Rose Fassano bequeath their ability to be seen together always, to Rita Euart and Virginia Bryant of the Junior B Class.



RICOLED 1931

Mary Davenport bequeaths her ability to do solo marching in gym to anyone who can do it as unconsciously as she.

Anna Goodwin and Katherine Bracq leave their liking for dancing to Helen Scott and Helen Fitzsimmons of the Junior B Class.

Mary Conway and Barbara Kenyon leave their history courses of study to the History Methods class of next year. They are mighty good.

Miriam Coplan and Esther Goldsmith leave their positions as cashiers in the lunchroom to any two who can make change as quickly as they can.

Lillian Cooney will need her agreeable nature, but to those who wish to acquire one, Lillian leaves an unfailing recipe.

Elsie Gibson bequeaths her originality in dress-designing to Ruby Dunn of the Junior B Class.

Catherine Dooley leaves her stack of books to Mary Donovan of the Junior A Class. Mary is quite strong too.

Julia Gutowski leaves her cute little habit of jumping up curbstones to those who desire exercise.

The Hayes Twins leave the answer to the question, "Which is which?" to the Carroll twins of the Junior A Class.

Edith Johnson and Julia King leave their important position as class fashion plates to anyone who can hope to equal their standard.

Petrina Agelone, Bernice Jackson, and Irene Sullivan leave their skill in arguing to anyone wishing to cultivate the art.

Anna Bliss bequeaths her pleasant (?) duty of collecting money for the RICOLED to the person who has her office next year.

Mary Rynn leaves her artistic ability to Helen McIntyre of the Junior A Class.

Lillian Shaw leaves the hope that no one will be foolish enough to play hockey when the game is in season. Black and blue shins are most uncomfortable.

Marguerite Teubert and Anne Troberman bequeath their ability at interpretative dancing to possible successors in the Freshman Class.

Mary Thornton leaves her baton to Constance Morin of the Junior B Class.

Mary McDougall leaves her positive theories to anyone who likes to argue as well as she does. Mary advises him, however, to be careful about making bets; it is quite possible to lose.

Margaret McGarrigle bequeaths her quiet acquiescence to Ruth Williams of the Sophomore Class.

Marguerite McGraw leaves her love of doing rhythms in Miss Langworthy's class to anyone who feels inclined to express herself rhythmically.



Mary McInerney leaves her willingness to play the piano at lunch period to Louise Hall of the Junior A Class.

Claire McKenna bequeaths some of her pleasing personality to "my cousin," Eleanor Ahearn, of the Freshman Class.

Beatrice McNamee and Rosemary Murray leave their ability to get art assignments done to those model pupils we promised Prof. Sherman.

Ruth Mathewson leaves her nods of approval of instructors' ideas to Mildred McDermott of the Junior A Class.

Eleanor Miller leaves her success as President of the Nature Club to the next person to be elected to that office.

Rose Mamigonian leaves her great liking for "Milky Ways" to Mary Lyons of the Junior B Class.

Lois Esten and Louisa Dalby leave their conscientious and studious natures to those members of the student body who may have need of them.

Clarice Davis leaves the hope that other students may have more success than she had in arranging programs to coincide with train schedules.

Madeline Briggs and Betty Dwyer will relinquish their chairs in Gibson's to the next duo who can occupy them for such long periods.

Avis Phillips is going to take with her all her musical talent. It will be useful when she becomes a music supervisor, which position, we predict, she will not be long in obtaining.

Beulah Diggle leaves the distinction of being one of the shortest members of the class to Mary Murray of the Sophomore Class.

George Blackwell leaves the privilege of falling asleep in history class to Tom Giblin of the Freshman Class.

Margaret Mulholland leaves her quiet, peaceful disposition in keeping with Louise Pelrine of the Junior B Class. Louise is quite capable of maintaining it.

Bessie Percy leaves her ability to stay thin after frequent light lunches to Helen Boyle of the Sophomore Class.

Esther Hallington bestows her calm assurance before a Health test on anyone who may feel insecure at such times in the future.

Angela De Palma leaves her unique style of writing "e's" to no one. She intends to make her name in the world thereby.

Ruth Hamilton bequeaths to the student most in need of it, her outstanding acquaintance with children's books.

Marion Milan bestows her excellent memory (?) on anyone who can forget things as easily as she can.

Ruth Monahan bequeaths her infectious giggle to Barbara Bromley of the Sophomore Class.



Gertrude Murphy leaves her highest heels to Martha Kelley of the Junior A Class, so that Martha can see over her classmates' shoulders too.

Ruth Paddock leaves her shy and sensitive nature to Avis Mardin of the Sophomore Class.

Kathryn Patt leaves her ability to answer Dr. Carroll's somewhat tantalizing questions to his next victim.

Margaret Quinn refuses to give away any of her excess length. She can see ever so much more than more than the short people.

Kenneth Riley leaves his recipe for a "booming laugh" to Bud Connors of the Freshman Class.

Libera Ruga leaves her excitable nature to the winner of a contest she is holding to find out who can say the most in ten minutes.

Charlotte Suzman just won't give up her ability to play heart-rending tunes on the piano. With merely one finger and a piano, Charlotte can reduce the most hard-hearted to sobs.

Angela Vallone leaves her nervousness in giving speeches in Assembly far away in a dark corner where she hopes no one will find it.

Grace Williamson leaves her ability to sneeze at the dramatic moment to anyone who likes goldenrod.

Lucy Randa leaves a part of her loyalty to South County to those who come from the same vicinity. Lucy has so much that she can well afford to share it.

Elizabeth Roarke bequeaths some of her knowledge of the great art of swimming to Pauline Nelson of the Sophomore Class.

Hortense Sutton hopes some other deserving soul may enjoy her good fortune.

Loretta McKenna leaves her ability to tell an exciting tale of "What happened last night" to Anne Corrigan of the Senior B Class.

Mary Nestor wills to Ruth Bean the honor of escorting material for testing to the Psychology department.

Doris Simmons bequeaths to Sarah Deluty her calm, unruffled outlook on life.

Mary Vinacco leaves to another staunch supporter of the Nature Club her ability to herald club activities with colorful posters.

Mary Hanley leaves her skill in making subtle remarks to Katherine Freel of the Sophomore Class.

Alice Liberty bequeaths her enviable control of the diaphragm to Margaret Keough of the Freshman Class.

Phebe Arnold wills her ability to "make chapel" every morning to her sister, Helen, in order that the honor may be kept in the family.



Gladys Brickley bequeaths her front seat in classes to anyone it may concern.

To anyone desiring a place in the sun, Leda Ciasullo leaves the sunniest place in Dr. Carroll's room with all the privileges attached thereto.

Mary E. Donnelly wills to Catherine Martin her ability to write poetry, which, Mary is convinced, she will never need.

Mary Escobar bequeaths her ability to improve Rembrandt to Ellen Hall of the Freshman Class.

Rosalie Falciglia wills to Rose Corse her supply of questions to be used in classes.

Anna Flynn bequeaths the first edition of her new book, "What Price Popularity," to Esther Carroll.

Helen Gooding wills her Economics book to Helen Arnold.

M. Alice Gore hereby wills and bequeaths to Avilla Nolan and her pals the distinguished senior table in the cafeteria.

Bertha Gorman wills to "her freshman gang" her capacity as sidecenter in basketball.

Abby Grinnell bequeaths her ability for rushing after janitors to Alma Duckworth, '32, and Marcella Barlow, '33.

Lucy H. Kee, by her departure, leaves to any junior who is willing to admit that all maps are wrong, her place as assistant in freshman geography classes.

Alice Kohl leaves her booth at the Guernsey Plaza to any junior who is sufficiently fond of cinnamon toast.

To all her successors from East Providence, Ruth Leonard wills the happiness that has been hers during the last four years.

Catherine M. McCarthy wills to Beatrice A. Walsh her skill in planning a senior program which will enable her to enjoy three extra hours' sleep every Wednesday morning.

Mary E. McMahan leaves to any future senior her seat in Dr. Carroll's Practical Law class. May she be able to enjoy his wit and chuckles.

Mary G. McNulty wills to the timid freshmen her power to speak in Student Association meetings.

Marion Mulvaney refuses to leave her knowledge of Economics to anyone as she expects this knowledge to be very useful in future years. However, anyone may have the seat which is near the back of the room.

Mary O'Brien wills to Helen Slattery her A-B-C book for Americanization.

To two interested sophomores, Margaret Orme bequeaths the plans and specifications of the fresh air course which she has been following.



Mildred Moriarty and Helen Reilley leave their ability to write a class will to the next victims.

Marion Williams leaves her ability to make appointments to Alice Callan of the Junior Class.

Margaret Feeley leaves her good nature to Catherine Gibson of the Freshman Class.

Peg Ryder leaves to Madeline B. O'Rourke of the freshman class the privilege to use Professor Sherman's needle and thread whenever she catches her stocking on one of the chairs in the building, providing she returns the same.

Marina Siniscalchi wills the use of the mirror in the gym locker room to any freshman who is unable to reach the mirrors which hang in the dressing rooms.

To Louise Dunn of the Sophomore Class goes Anna Sullivan's system of collecting dimes.

Dorothy Thornton wills the back seat of all classes to Kit Coleman who until now has occupied the front.

Eva Todsén leaves her height to Margaret Hathaway, '33, so that she may be able to secure her own bags from the bus racks.

Esther Walker wills her place in the cafeteria line to Eleanor Spencer, '32.

To the Senior B Class, we bequeath our assigned chapel seats—as sitting in the balcony may make them dizzy.

To the Junior B Class, we leave some mechanical students to increase their size. Never mind, Junior B's, good things come in small packages.

To the Sophomore Class, we leave a dictionary containing the definition of the word "standard."

To the Freshman Class, we leave best wishes for their success and the hope that their college life will be as pleasant as ours has been.

To Alma Mater, we bequeath our gratitude for her kindness to us and the promise of loyalty and fidelity throughout future years.

Signed this 23rd day of June, in the year of Our Lord, nineteen hundred and thirty-one.

GLADYS A. BRICKLEY,
MILDRED F. MORIARTY,
HELEN M. REILLEY,

For the class.



Class Prophecy

We climbed the steep Olympian height
The Greek gods to entreat.
A sacrifice with hearts contrite
Made our appeal complete.
Ere long, great Jupiter appeared
And called the great divines,
The deities by men revered
At all the ancient shrines.
They feasted in the king's great hall,
The future they revealed;
We listened carefully to it all,
No facts have been concealed.

Great Jupiter called upon Apollo saying, "O thou prophet of the gods, we are assembled to discuss the destinies of the graduating class of Rhode Island College of Education of the year 1931. Tell us into what paths these adventurers will travel."

Immediately there arose the glorious Phoebus Apollo of whom Shelley has written:

"All harmony of instrument or verse,
All prophecy, all medicine, are mine,
All light of art or nature; to my song,
Victory and praise in their own right belong."

To the supreme ruler of the universe, he made reply, "Mighty Jupiter, thou art the most glorious god of heaven and earth. Be it as thou wilt. Under my protection, I shall take those in whom I find the qualities for which I seek, namely, music, art, and poetry. Edna Gilmore's beautiful voice will carry her to fame in the operatic world. Her favorite song will be "Just Before the Battle, Mother." She will be accompanied by Mabel Clough. The composer of the famous "Rhapsody in Green Ink" will be Grace Williamson, the noted violinist. Listeners of the "Post Toasties' Hour" will be delighted to hear the saxophone solos by Kenneth Riley, while Rosalie Falciglia will be known throughout the United States for her concert tours.

For their artistic talents, I have chosen Eva Buonanno and Marion Williams. Eva's excellent portraits of Rose Fasano, the great linguist, will grace many an art gallery and Marion will gain renown through the beauty and individuality of her artistic productions. The Boston Museum of Fine Arts will exhibit etchings by the famous Abby Grinnell and Clarice Davis.



RECOLLED

1931

Under my watchful eye, the Muses will direct the futures of several members of the class. Euterpe, the muse of lyric poets, has a promising protege in Anna Bliss who will soon become famous due to her sonnet, "Connecticut the Beautiful." Lillian Cooney will teach poetry appreciation in the primary grades with admirable technique. Her favorite poem will be "Scarlet Fever Blues." Professor Robinson will offer a course devoted solely to the study of Mary O'Brien's poetry.

As editor of a weekly magazine, "Hankerings," Gertrude Coleman will be most successful. One of her able assistants will be Helen Ashworth who will conduct a column called "What Will be News Tomorrow." Kay McCarthy will run the Dorothea Dixonian column. Anne Troberman, whose exceptional command of literature has brought her splendid results, will become the head of the English department in one of the junior high schools of Providence. The first woman to prove that the world is flat will be none other than Marion Mulvaney.

Urania will lead Libera Ruga into the teaching of astronomy where she will surpass all others. Miss Ruga will be an outstanding "night school" teacher.

Terpsichore, the muse of choral dance and song, will stimulate Mary Thornton to create a new dance step called the Dawlinian Drag. This new dance step will be introduced to the world in the dancing studio of Anna Goodwin and Katherine Bracq. In a few years, Bessie Percy will be singing original compositions of Avis Phillips to admiring audiences. The opening of the "Bon Amie Studio"—tap dancing a specialty—will startle the world. The owner and director Mme. Gourmain is to be Bertha Gorman.

Clio, the muse of history, has recognized the ability of Mildred Moriarty and will lead her to become a teacher in the history department of the R. I. College of Education where she ably acted as assistant during her senior year. This college will also be favored with visits from Angela Vallone and Marguerite Teubert who give promise of being renowned history lecturers. As history supervisor in Pawtucket, Mary McDougall will find very valuable in her work a comprehensive volume on history methods, entitled "This Book is Right" to be written by Ruth Mathewson and Lillian Shaw.

Apollo paused and said, "Great Jupiter, although having the power to prophesy for all, I beg that thou asketh of the other gods and goddesses whom they have selected to guide in future activities."

Jupiter, deeming this a well-considered plan, called next upon Juno, most worthy and most queenly of the goddesses, to testify to her intentions.

Juno arose and spoke, "My strong protective arm has for some time been upholding some members of the class. Dignity and leadership of women, for which I stand, will lead Barbara Kenyon, Catherine Casserly,



Lucy Randa, and Barbara Murray far in their careers as deans of women's colleges. Madeline Briggs will be founder of The Society for the Prevention of Cruelty to Scotties. Her transportation busses she will hire from Betty Dwyer who will be the owner of the Early Bus Company. Ethel Cronin, following in the footsteps of her father, will make history for the town of Warren by becoming its first woman Chief of Police. To this list of illustrious names, let me add that of Ruth Monahan who will be President of the United States in 1944. She will have for experience her four years as President of the Class of 1931. Mary McNulty will be a prominent senator from Rhode Island, and Helen Gooding will hold the presidency of the American University at Constantinople."

Jupiter now called upon Minerva, the goddess of wisdom, of skill, and of contemplation, to name her protégés. Many of our members had she chosen on whom she deigned to pour her special blessings. Lois Esten and Angela De Palma, by their ability to administer survey tests, will make their work in psychology outstanding. A new system of fresh air schools will be inaugurated by Margaret Quinn and Helen Hackett. Minerva also selected Loretta McKenna and Esther Hallington to direct private kindergartens. Mary Nestor will be renowned for her treatise on the subject of "Innoculations." A survey of South County in search of "Hills" will be conducted by Evelyn Earnes. Eleanor Miller's camp for girls will be popular throughout the country. A special aptitude for domestic science will lead Mary Griffin to the choice of college dietitian for her career. Charlotte Suzman will be the author of a book entitled "What To Do and When Not To Do It." Anna Flynn, as an instructor at Columbia University, will head a student tour around the world. Dot Thornton will ably assist her. Mary Murray will be representing the Board of Education as state organizer of a 6-3-3 system. Ruth Clifford will be in charge of the science department in the American University at Constantinople. Lucy Kee will enlighten the world as to why "Gentlemen Prefer Blondes." The president of the National Education Association of 1941 will be Alice Gore. Marina Sinescalchi will be known as the African game hunter. Mary Rynn will be an excellent expounder of the "Dalton" plan. Ruth Hamilton will edit a book on penmanship.

Diana, whom Ben Jonson has named "queen and huntress, chaste and fair," was the next to speak. The fair-tressed sister of Apollo showed excellent judgment, we believe, in her selections. In the field of sports, she placed Mary McInerney who she said would bring home the tennis laurels from all European courts. Phebe Arnold will be one of the American representatives at the International Sport Meet in 1942. A new phase of calisthenics will be offered by the "Gigantic School of Physical Culture" conducted by Gertrude Murphy. As future leaders in dramatics, she chose Ruth Fairbrother and



RECOLLED 1931

George Blackwell. These two popular thespians will star together in a play written by Beatrice Guilbault. Ruth Leonard will play the "mother" parts, and Margaret Orme, the comic parts. Alice McCormack will become the worthy successor of Selena Royle. The presentation of twin medals for the Movie Marathon of 1941 will be made to Julia King and Edith Johnson. A most amusing radio act entitled "Miranda and Judy" will be presented by Mary Davenport and Julia Gutowski. Mary will spring the jokes, and Julia will start the giggles.

All eyes were now turned toward Venus, about whom were gathered the Hours and the Graces twining sweet smelling garlands and weaving robes of many hued flowers for her. The goddess of love and beauty and mistress of feminine charm, smiling sweetly, addressed her words to the great Jupiter. Claire McKenna will ably demonstrate her domestic discoveries in "A Cottage by the Sea." Gladys Brickley and Hortense Sutton will be exchanging recipes with Claire. Betty Campbell will become an executive in one of Central Falls' leading banks in order that she may keep an eye on the Bills. Eva Todsén will be the gracious wife of the ambassador to Italy. Bernice Jackson, she continued, would hold many an audience spellbound by her dramatic recitations. As a dress designer, she declared, Helen Reilley would be unsurpassed. The famous Gibson models to be worn both here and abroad would be the creations of Elsie Gibson. Margaret Deery would be the author of a book called "What to Wear and When to Wear It." In the care of the Graces, she left Marion Milan and Virginia Hollihan to become future society leaders. Alice Kohl will be the sole proprietor of the "Chez Alice."

A silence followed this account, and we were wondering who would be the next to speak when suddenly we heard the sweet-toned and powerful voice of Mercury. This youthful and beautiful god had made a choice selection from the class. As patron of industry, commerce, and mathematics, he had found many capable persons in our group. Esther Goldsmith he had chosen for the business world as treasurer of the Rice chain of restaurants. He prophesied that in ten years the graduating class of R. I. C. E. would dine at a unique tea room, "Stratford-on-the-Pawcatuk," whose owners will be Mary Conway and Kathryn Patt. Because of his travels about the world, he appreciated the value of discoveries to mankind and would encourage Marguerite McGraw and Elizabeth Roarke in their work among the Egyptian remains. Mary Hanley will become supervisor of Mathematics in a junior high school. Margaret Mulholland is destined to teach mathematical analysis to future freshmen at R. I. C. E. A textbook which will be of great assistance to teachers of mathematics will be written by Mary Vinacco and Esther Grossman. Beatrice MacNamee will be an instructor of commercial arithmetic in a large business college to be founded by Petrina Angelone. Anne Sullivan will be a member of the President's finance committee.



Mercury also stated that because of his interest in oratory he had selected Catherine Dooley and Alice Liberty, whose booming voices would be heard for miles around, and Rose Mamigonian whose ability to narrate stories to little children would lead her to success. Louisa Dalby's book of stories for young folks would be used extensively by primary teachers.

It was now Bacchus' turn to speak. "The immortal splendor of his face he shows," this god of earth, looked upon as a promoter of civilization, a law-giver, and a lover of peace. He assured us that excellent work would be done by Margaret McGarrigle in alleviating the sufferings of mankind through welfare work. Rose Finnegan, Mary Donnelly, and Doris Simmons would be the founders of a group of settlement houses, where Mary Germani would make use of her facile tongue as official interpreter. All advice needed by the settlement workers will be accessible at the Owl Club, conducted by Rose MacAndrew. All clubs for children will be under the supervision of Ruth McCauley. Mary Escobar would be in charge of the Americanization classes. The Hayes twins, as advocates of world peace, will become famous.

Miriam Coplan and Ruth Paddock are destined to be politicians of great renown. The making of future American citizens will be carried on extensively by the efforts of Beulah Diggle, who is destined to become a leader in Americanization in the state. Rosemary Murray will become the mistress of a large fortune, a part of which she will use to build a home for aged school teachers. A new type of hair curler, guaranteed to enhance the latest earrings, will be invented and demonstrated by Irene Sullivan. Peg Ryder will be vice-president of the "Women's Dorcas Society" in Tiverton. Esther Walker will win over the heart of China in her missionary work there. She will be aided in her work by contributions from the "Sen & Sen" Club, Anna McMahan, president. Margaret Feeley will donate the greater part of her wealth (accumulated while a school teacher) to the erection of dormitories for R. I. C. E.

It suddenly began to grow dark until it was black as night. When it finally cleared away, the gods were gone and we were standing on the cold mountain alone.

We've told you only what we heard
As on the mount we stayed.
If there is error, speak no word;
The gods we have obeyed;
And now our prophecy is done—
The rest is left to you.
Onward, upward, everyone,
To R. I. C. E. be true.

CATHERINE CASSERLY
MABEL CLOUGH

SOCIAL



ETHICS



ALL-COLLEGE DANCE COMMITTEE



All College Dance

On November 21, Rhode Island College of Education brought to a climax its early social season with a brilliant All-College Formal Dance at the Providence Biltmore.

In the receiving line were Lieutenant-Governor and Mrs. James G. Connolly, Professor Clara E. Craig, Professor and Mrs. Robert M. Brown, Professor and Mrs. Thomas Herbert Robinson, Miss Anna Flynn, president of Student Council, and Miss Mary Thornton, chairman of the All-College Dance committee.

The Harvest Hop

The Senior Class held a Harvest Hop in the college gymnasium, Friday evening, October 24, 1930. The hall was beautifully decorated in blue and gold. The affair was a great success both socially and financially. Miss Alice Gore, president of the class, was the chairman of the committee.

The Valentine Dance

The first social event of the second semester was the Valentine Dance sponsored by the Senior A's and held in the gymnasium. The decorations were expressive of the season.

In the receiving line were Dr. and Mrs. John L. Alger, Professor Clara E. Craig, Professor and Mrs. Thomas Herbert Robinson, Miss Emma J. Craig, Professor and Mrs. Benjamin Sinclair, and Mr. C. Owen Ethier.

RECOLLED 1931



Junior Week

A new social tradition at Rhode Island College of Education was inaugurated this year with the introduction of Junior Week. Miss Esther Carroll, '32, was chairman of the Junior Week Committee.

Junior Week activities began on Wednesday, May 13, with a Thé Dansant at the College. Tea was served in the setting of a Japanese garden. Dancing was held from 4:30 to 6:30. In the evening the Dramatic Club presented Oliver Goldsmith's "She Stoops to Conquer." This production was under the direction of Professor Adelaide Patterson.

On Thursday, May 14, at four o'clock, Alpha Rho Tau, the Art Club of the college, held an exhibition and tea in the studio of the college. In the evening the Glee Club, under the direction of Professor Elmer S. Hosmer, entertained in the Henry Barnard Auditorium. Mr. Harry Hughes, baritone soloist of the Central Congregational Church, was guest artist of the evening. Following the concert, the College Gymnasium was the scene of informal dancing for students and their guests.

On Friday evening, May 15, the Junior Week activities were brought to a climax with the Junior Promenade in the Crystal Ballroom of the Providence Biltmore. A feature of the Junior Promenade was the first presentation of the music of a farewell song, dedicated to the Class of 1931, and composed by Dr. Grace E. Bird, a member of the faculty of Rhode Island College of Education.



Humor

LOOK PLEASANT

We can not, of course, all be handsome,
And it's hard for us all to be good;
We are sure now and then to be lonely,
And we don't always do as we should.
To be patient is not always easy,
To be cheerful is much harder still;
But at least we can always be pleasant,
If we make up our minds that we will.

And it pays every time to be kindly,
Although you feel worried and blue;
If you smile at the world and look cheerful,
The world will soon smile back at you.
So try to brace up and look pleasant,
No matter how low you are down.
Good humor is always contagious,
But you banish your friends when you frown.

Selected

CLASSROOM GOSSIP

Miss Carlson: "Did anyone ever see an elephant skin?"

Peggy Orme: "Yes, I have."

Miss Carlson: "Where?"

Peggy Orme: "On an elephant."

Phebe Arnold: "Leda, have you sufficient confidence in me to lend me a dollar?"

Leda C.: "Yes, I have the confidence, but I haven't the dollar."

ORIGIN OF NAMES

1. A young Pennsylvanian called his sweetheart "Revenge" because she is so sweet.

2. A South Bend man calls his wife "Fact" because she is a stubborn thing.

3. We call a beautiful school ma'am that we know "Experience" because she is a dear teacher.

4. A mother calls her daughter "Dear" because she is so expensive.

SENIORS DO TRAVEL

Anna Flynn going up Sixth Avenue, New York, met a laborer to whom she said: "Will you please tell me if I am half way to Central Park?"

Laborer: "Faith and I will," was the reply, "if you tell me where you started from."

EXPLANATION IS SOMEWHAT NECESSARY

Mary Escobar: "Why shouldn't free seats at church be abolished?"

Peggy Ryder: "Because it makes the people good for nothing."

Mary Donnelly: "Why is a women deformed when handling her stocking?"

Abby Grinnell: "Because her hands are where her feet ought to be."

Esther Walker: "Tell me why good resolutions are like fainting women?"

Eva Todsen: "Because they should be carried out."

Alice Kohl: "When does a farmer act with rudeness toward his corn?"

Rosalie F.: "I heard that it's when he pulls their ears."

Rose MacAndrew: "Ruth, why is a bee-hive like a bad potato?"

Ruth Clifford: "Because a bee-hive is a bee-holder and a bee-holder is a spectator, and a 'spectator' is a bad potato."

Alice McC: "When is a clock on the stairs dangerous?"

Mary Murray: "When it runs down and strikes one."



Marion Williams: "Say, Edna, when is a pretty girl like a ship?"

Edna Gilmore: "When she's attached to a buoy."

SHE MISUNDERSTOOD

A conductor on the Pawtucket Express came to Bertha and said: "Miss your fare!"

"Sir?" exclaimed Bertha, somewhat confused.

"I say your fare!" repeated the conductor.

"Well, that's what all the young men think, but coming from a stranger, I——"

"Oh! ah—I mean your ticket," said the conductor, still more confused than Bertha.

WORDS OF WISDOM FROM SENIOR CLASSES

Prof. Stevenson: "For what was Eve created?"

Dot Thornton: "For Adam's Express Company."

Gladys Brickley: "If your friend fell in a well, why couldn't her brother rescue her?"

Ruth Leonard: "Well, he couldn't be her brother and as-sist her too."

Lucy Kee: "Is a lie always a lie?"

Mary Nestor: "Of course not, when it's hyperbole it's a figure and figures can't lie."

Mary O'Brien: "In what key would a lover write a proposal?"

Mary McNulty: "Be mine ah!"

M. Mulvaney: "Why does every woman want a husband named William?"

Barbara Murray: "So she can have a will of her own."

A freshman hesitates to pronounce the word "connoisseur."

Prof.: "What would you call a man who pretends to know everything?"

Frosh: "A professor."

Teacher: "Who was the first man?"

Student: "Washington; he was first in war, first in——"

Teacher: "No, no. Adam was the first man."

Student: "Oh! if you're talking about foreigners I guess he was."

Pat Sullivan pointing to clouds: "I wonder where those clouds are going?"

Helen Gooding: "I think they are going to thunder."

Gentleman to a servant boy: "Well, John, did you give the Governor my note?"

Boy: "Yes, sir. I gave him the note, but there's no use writing letters to a blind man. He's blind as a bat!"

Gentleman: "BLIND?"

Boy: "Yes, sir. Twice he asked me where my hat was and I had it on all the time."

"Are you sick, Pat?" asked the doctor.

"Sick is it! Faith and I lay spachless siven long weeks in the month of August and did nothin' but cry, 'wather, wather' all the time."

Poverty-stricken lover: "Marry me, dear, and I'll treat you like an angel."

Wealthy girl: "No, thank you. Nothing to eat and less to wear."

DIAGNOSIS

"Mother," complained Mary, "I don't feel well!"

"That's too bad, dear, where do you feel worse?"

"In school, mother."

Absent-minded professor calling on his sweetheart:

"Darling, I'm growing very forgetful, please forgive me, but I proposed to you last evening and I've forgotten whether you said 'yes' or 'no.'"

Sweetheart: "I'm so glad you've called. I knew I said 'no' to someone but I had forgotten whether it was you or not."

Little boy triumphantly to his mother: "Well, there were only three boys in the room who could answer one of the questions that the teacher asked today."

Proud mother: "I hope my son was one of them?"

Boy: "Oh, yes, mother."

Mother: "What was the question?"

Son: "Who broke the glass in the office window?"

Teacher: "Remember, everyone who got 100 today may go home."

Exit Tommy Jones.

Teacher: "Come here, Thomas, what do you mean by going? You didn't get one hundred!"

Tommy: "Why, yes I did. I got 60 in arithmetic and 40 in spelling."

A new teacher was giving a first grade lesson in health. She asked the pupils if they knew there was a fire burning in the body all the time. "Yes 'um," said a little girl, "and when it's a cold day, I can even see the smoke!"

A reporter was interviewing a successful business woman.

"What book has helped you most in your climb up the ladder?"

"My father's check book!"

Psychology student to fiancée.

"And they say, darling, that people who live together get to look alike."

Fiancee: "Then consider our engagement broken!"

College President: "Oh, I can't eat any breakfast. I'm all upset. I had a terrible dream last night."

Wife: "How awful! What was it?"

President: "I dreamt that the board of trustees were going to make me take the entrance examination."

Artist, admiring his latest portrait.

"I think I shall give this work to some charitable institution that is in need of some fine art. What institution would you suggest?"

Companion: "The Institution for the blind."

The professor in sociology was delivering the final lecture before the examination. He impressed the necessity for deep study upon the students, telling them of the importance of the test.

"The examination is now in the hands of the printer and will be here at the next meeting of the class. Are there any questions?"

Voice from the rear: "Professor, who is the printer?"



Teacher to lazy pupil: "What are you going to do when you grow up if you don't learn to read and write and do arithmetic?"

Pupil: "Oh, I'm going to be a school teacher and make the children do all the work."

Woman who voted for the first time: "Well, I can't see what's the use of all this secret ballot stuff that men are always talking about. I'm not ashamed to let people know whom I voted for so I wrote my name on the ballot."

"How do you like school, Tommy?"

Tommy: "The school's all right, but we've got an ignorant teacher."

Friend: "Why, Tommy!"

Tommy: "Why she knows so little that she asks questions all the time and expects us to answer them!"

EVIDENCE

Little sister was very excited and ran to her mother. "Oh, mother, I'm sure Johnny has the chicken pox. His sweater is just covered with feathers."

A small boy brought his home work to school all done correctly.

After looking it over the teacher asked doubtfully:

"Who helped you with these problems, Junior?"

"No one, ma'am."

"Are you sure your father didn't help you?"

"No ma'am, he did them all."

"If the president and vice-president and all the cabinet members should die, who would take charge?"

"Oh, I guess that would be a job for the undertaker."

WHAT A THRILL!

"Did you know that Dr. Carroll has a railroad?"

"No, is that so?"

"Yes. He calls it 'The Now You're Never Home and Happy Railroad.'"

DIAGNOSE THIS ONE

R. Monahan: "What's the matter, Tommy?"

Tommy: "My laps are chipped."

Dr. Carroll: "When is a thing lost?"

A. Vallone: "When it can't be found."

Dr. Carroll: "Where did you get that violin?"

G. Williamson: "I made it out of my own head."

Stranger to villager: "Where does this road run?"

Villager: "Nowhere, mister. I've been here all my life and the road ain't run nowhere yet!"

HOW HE LOST HIS CASE

A young lawyer was pleading his first case, and had been retained by a farmer to prosecute a railroad for killing twenty-four hogs. He wanted to impress the jury with the magnitude of the injury.

"Twenty-four hogs, gentlemen," he said, "just think! Twenty-four twice the number there in the jury box."

WHY, OF COURSE

First-class scout: "What kind of ears has an engine?"

Tenderfoot: "I don't know."

First-class scout: "Why, engineers, of course."

ECONOMY

A mother was sending her son at college an overcoat. In the bundle she put this note:

"In order to cut down the postage I cut off all the buttons. P.S. You will find them in the lower right hand pocket."

HE KNEW WHAT HE WANTED

"Your hair wants cutting badly, sir," remarked a barber insinuatingly to a customer.

"No, it doesn't," replied the man in the chair. "It wants cutting nicely. You cut it badly last time."

THE REWARD OF TOIL

"Yes," said the tall man, "I have had many disappointments in my life, but none stands out like the one that came to me when I was a boy."

"Some terrible shock that fixed itself in your memory, I suppose."

"Exactly," said the tall man. "I had crawled under a tent to see the circus, and I discovered it was a revival meeting."

THE PROPER MATERIAL

Nurse (giving First Aid Class at camp): If the patient has a fractured joint and there are no splints around, the only thing to do is use your head."

Nancy (just back from college): And, mother, I made the scrub team!

Mother: Thank goodness, you've dropped basketball and taken up something useful!

Mother: "Little boys should be seen and not heard."

Richard: "But, mother, I'm not a movie actor."

JUST LIKE DADDY'S

Bobby was just three when he made his first trip to the barber's.

"How do you want your hair cut, Bobby?"

"Like Daddy's, with a hole on the top."

BARGAINS!

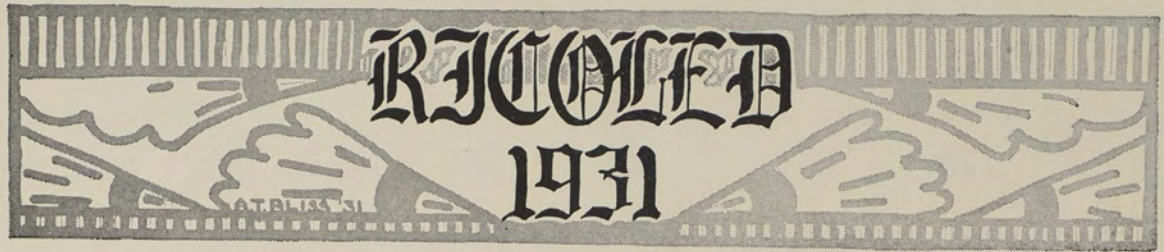
"Grandmother," said Edward, "the little chickens must be trying to sell themselves—they keep yelling 'Cheep—cheep.'"

THE REASON

While being shown around an English Museum, an American was shown what was said to be the skull of Oliver Cromwell.

"That can't be Cromwell's skull," said the American, "it is far too small."

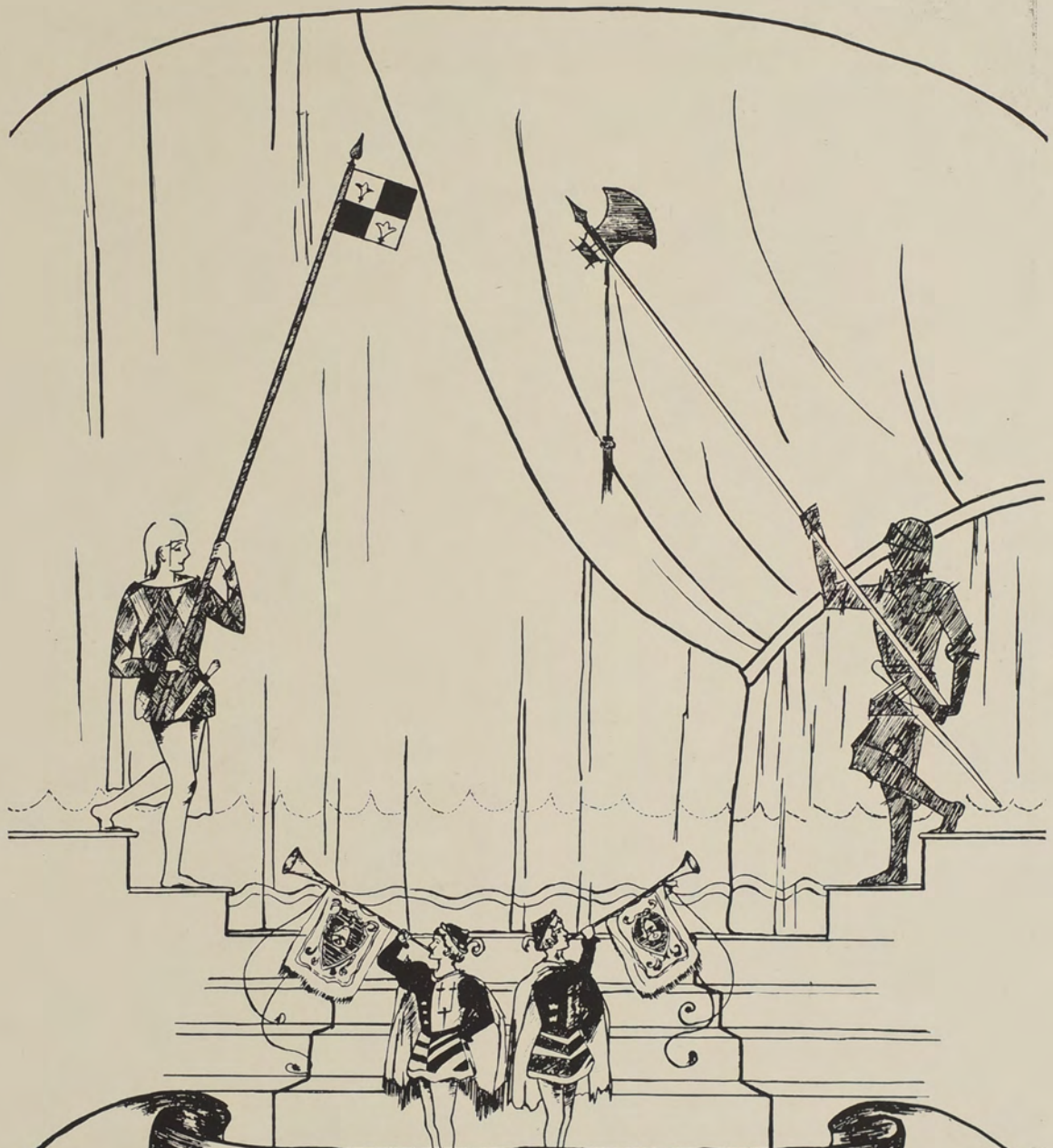
"But, ma'am," he replied, "that was his skull when he was a boy!"



Faculty Personals

1. John Lincoln Alger
Just and Loyal Always.
2. Clara Elizabeth Craig
Craves Educational Culture.
3. Emma Josephine Craig
Energetic and Just Critic.
4. Robert Marshall Brown
Rarely Makes a Break.
5. Harriet Lucia Sherman.
Has Lots of Sense.
6. Benjamin Graves Sinclair
Business, Growth, Success.
7. Grace Electa Bird
Gives Educational Background.
8. Eugene Tuttle.
Eminent Teacher.
9. Frank Earl Waite
Frank in Every Way.
10. Thomas Herbert Robinson.
The Hearty Reader.
11. Adelaide Patterson.
Always Performing.
12. Amy Adwina Thompson
Always Acts Thoughtfully.
13. Alice Louise Thorpe.
Always Looks Tidy.
14. Ruth Mabel Ranger.
Rarely Misses a Recitation.
15. Neva Leslie Langworthy
Never Lacks Life.
16. Grace Winthrop Osborne
Generally Welcomes Optimism.
17. Mary Lillian Stevenson
Many Lengthy Speeches.
18. Helen Louise Hill
Hearty Laughter Heard.
19. Hester Mary Russell
Her Marvelous Recipes.
20. Mary Ellen Makepeace
Makes Everyone Mind.
21. Mary Amalia Weber
Mathematical Ability Wonderful.
22. Doris Evonne Travers
Does Energetic Teaching.
23. Gladys Stocking Coggins
Girls' Seats in Chapel.
24. Charles Carroll
Cracks in Classes.
25. Margaret-Elizabeth Waldron
Modest in Every Way.
26. Mary Ellen Loughery
Many European Languages.
27. Elmer Samuel Hosmer.
Emphasizes Singing Heartily.
28. Marion Dodge Weston
Most Diligent Worker.
29. Wendela Christina Carlson
Wise, Calm, and Cheerful.
30. Gaetano Cavicchia
Gifted and Clever.
31. Doris Dwinel Aldrich
Does Duties Ardently.
32. Alfa Loretta Small
Apt to Like Scales.
33. Katherine Leona Cuzner
Knows Library Courses.
34. Rose Snell
Repeatedly Silent.
35. Charles Owen Ethier
Cheerful, Optimistic Educator.
36. Lillian Ethel Swan
Likes Exquisite Scenery.
39. William Alpheus Baldwin
Wrote A Book.
38. Florence Mirick Ross
Frequently Mentions Remedies.
39. Freida Maxine Baxt
Friendly Modern Being.

C. LIBERA RUGA
KENNETH RILEY
BERTHA GORMAN



Classes

MR. DEERY '31



SENIOR B CLASS

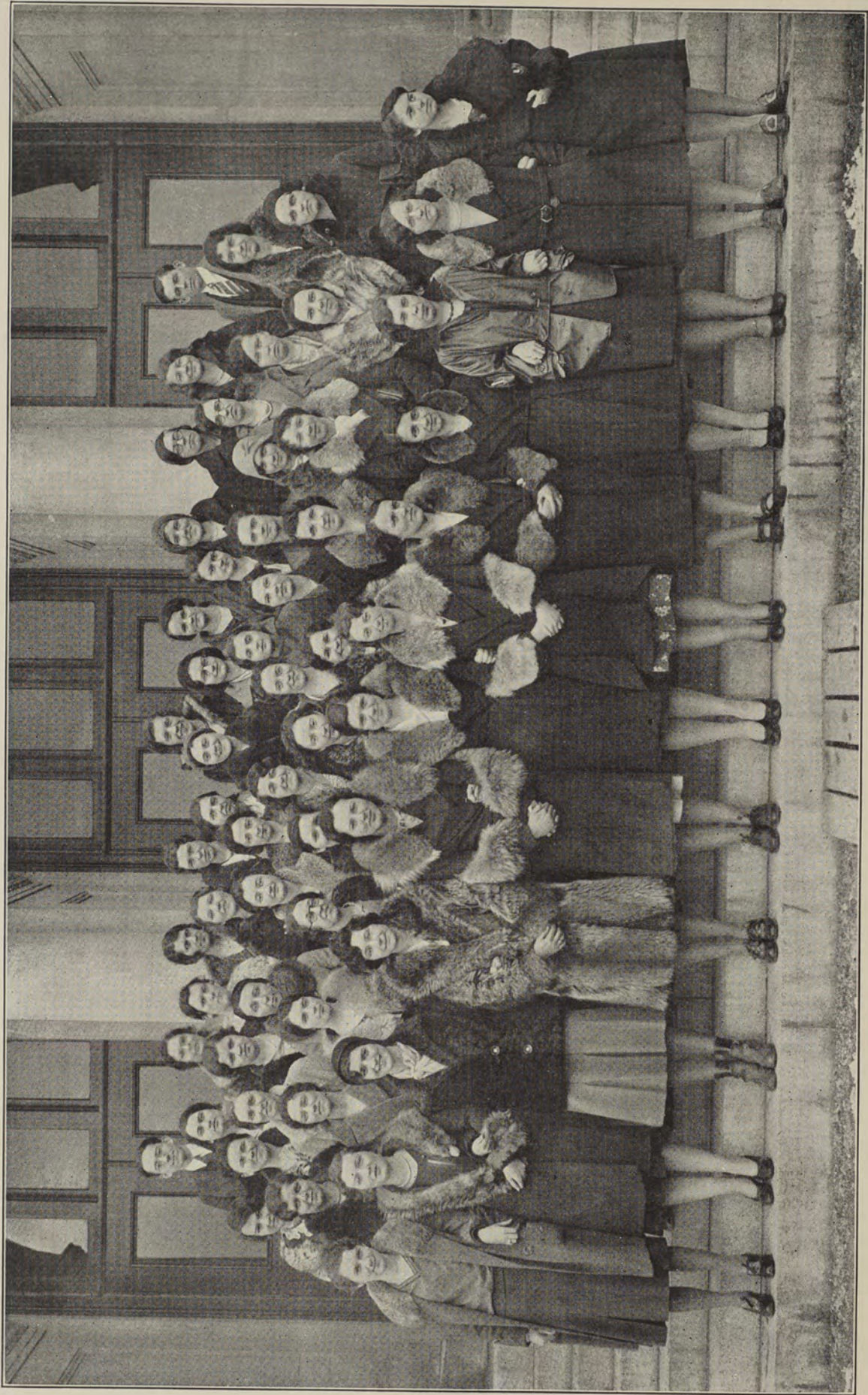


Senior B Class

Cerise and silver, colors gay,
Of the good ship '32!
We're nearly back in port at last
To read our log to you.
In February, 1928—
It seems so long ago—
We all set sail for R. I. C. E.
Seventy-five strong, you know.
We battled with such sharks and whales as
"Math" and history,
And finally landed, safe at last,
As Freshman A's to be.

We'd met our sister ship so true
With flag of blue and gold,
And formed fine friendships, then and there,
To keep as we grow old.
Two short stops at harbors new
We made the following year
To entertain our sisters big
And greet small sisters dear.
For dances, teas, and parties, too,
We've stopped our gallant ship;
In gym meets, play days, and the rest
We've allowed our oars to dip.

In the Song Contest, as Junior B's,
We captured second place,
Before we entered the training field
To be taught to be "first mates."
The "ten-week training plan" was new,
New to all you see,
And now we must spend our trip's last lap
Away from R. I. C. E.
So though we reach our port at last,
We'll have only time to say,
That our love and honor for our college dear
Are increasing day by day.



JUNIOR A CLASS



Junior A Class

IN spite of the many divisions of our class this year due to the training period, we have succeeded in co-operating enough to hold some excellent social affairs. Early in the year, we originated what we hope will become a custom for the Junior classes; that is, we gave a party for the Freshman Class. A short entertainment was followed by dancing and refreshments in the gymnasium. In January, we held a very successful informal dance. A special feature was a prize waltz. Together with the Junior B Class, we planned still another precedent, Junior Week, with its Junior Prom, tea dance, Dramatic Club presentation, Glee Club concert, and Art Club exhibit. This was the largest and most spectacular of all the social events of the year.

President—MADELINE BOYLE

Vice-President—MARION GOFF

Secretary—MARGARET DONOHUE

Treasurer—RITA EUART

RECOLLED
1931



JUNIOR B CLASS



Junior B Class

WITH the flickering of candles on a banquet table and the social union of twenty prospective young educators, a farewell was given to a prosperous Sophomore year, by the present Junior B's. Hyperbole itself could not outsoar the significance of that January evening! There was that slight environment of the separation of two long years of linked friendship and the prelude of a new task that was creeping in.

The Sophomore A classification slipped into eternity. February marked the debut of a Junior B distinction. Now, we are one step higher toward our pedagogical goal. The thorough practice that we obtain at the Henry Barnard School fortifies us and prepares us for the educational world.

In each collegiate function, our banners of orchid and yellow are highly represented. With untiring zeal, the Junior B's determinedly attempt "to shine like a good deed in a naughty world."

President—ISABELLE HANCOCK

Vice-President—REGINA STANLEY

Secretary—VERONICA FLEMING

Treasurer—CONSTANCE MORIN



SOPHOMORE CLASS



Sophomore Class

IT was with a pleasant feeling of belonging that the members of the Class of '33 took their places as Sophomores in Rhode Island College of Education. In the brilliant coloring of autumn days, the deep hues of changing red and gold were making the campus a picture of beauty, a beauty short-lived, a last full gift before frost and cold.

With this omen of the end of light vacation days and the beginning of serious work, we became busily engaged in our program of study and in the organization of our class.

Thus was our Sophomore year begun. A tradition of the College called us together socially to welcome our Freshman sisters, to offer our help to them in new scenes, and to foster the college spirit of unity and friendship.

Now the Campus was, in turn, blanketed with snow, or bare and wind swept. Christmas was approaching. The college united in singing Christmas carols. Welcome holidays went by all too quickly.

The new year ushered in days cold and clear. We pursued our studies in earnest. Days happily spent in the various school activities passed.

A realization came to us that this is the last year in which we may all be united as a class—the training days are not so far ahead. This serves to bind us closer together and as the days go on and as the fresh warmth of Spring draws near, we prepare for a class reunion at a banquet.

The Easter vacation holds many pleasures for us. The end of this Sophomore year is at hand. The campus once again presents a picture of beauty—the picture that we like best, for it is something to take with us in memory along with all the ideals, traditions, and spirit that symbolize for us Rhode Island College of Education.

President—BARBARA BROMLEY

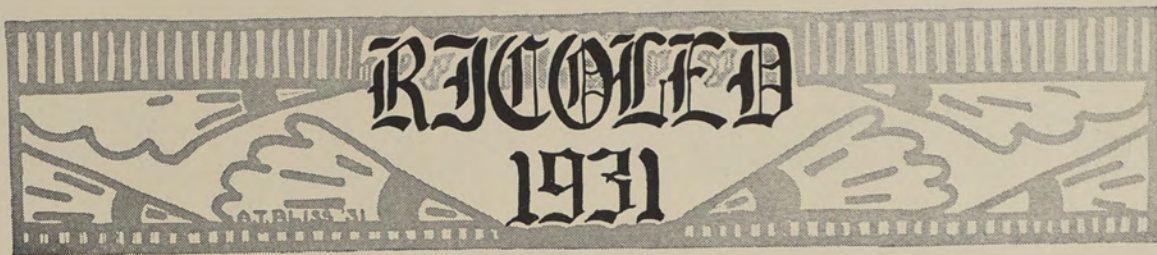
Vice-President—ESTHER McHUGH

Secretary—FRANCES STEFFY

Treasurer—MARY MORAN



FRESHMAN CLASS



Freshman Class

IN retrospect today, last June seems a part of a dim, abstract past—even that June day when we, fledglings poised for flight, hovered in uncertainty and much deliberation as to our route and destination. Then appeared that auspicious augury, to which we are so indebted, that directed our path to R. I. C. E. where we are certain to strengthen our wings and appendages requisite for a soaring flight into the azure of service and achievement after four years of development.

We have passed the period of acclimation, and actually know the respective extremities of the second floor corridor at which the English Department and Aquaria are located, but the problem of using the convenient staircase for any given room still baffles a few of us.

A red-letter event in our social sphere, although carried out in an attractive orange and black color scheme, was the Hallowe'en Party given us by the Sophomores. Then we have pleasant recollections of the reception and entertainment in November, at which we were guests of the Junior A Class. Many of us are deriving immeasurable pleasure and benefit from various extra-curricular activities. Although our interests are diversified, the Class of 1934 is linked by a strong bond. All its members are devoted sons and daughters of R. I. C. E., pledged to uphold her to the limit.

President—ELEANOR M. AHEARN

Vice-President—MARGARET E. CAHIR

Secretary—LOUISE E. JONES

Treasurer—CATHERINE F. GIBSON



ONCE UPON A TIME!



See nothing
Hear nothing
Say nothing



SHALL WE
BLAME THIS ON
SPRING?



PROFESSOR
SHERMAN



Close
Quarters



Which Class Shall We Cut ???





STUDENT COUNCIL—SEPTEMBER-FEBRUARY



Student Council

September-February

THE Student Council and Association have co-operated in an outstanding manner during the first semester of '30 and '31. The Council has worked upon many problems and with the aid of the members of the Student Co-operative Association has been able to solve these in a satisfactory manner.

Among the outstanding work of the council was the "All College Dance" which this body sponsored in November. It was the second of its kind in the history of the college and was a distinct social success. An important piece of legislation was the creation of a Student Council Fund and the drawing up of a set of regulations governing the expenditure of Council money. Co-operation has been the keynote of the work throughout the semester.

President—ANNA FLYNN, '31

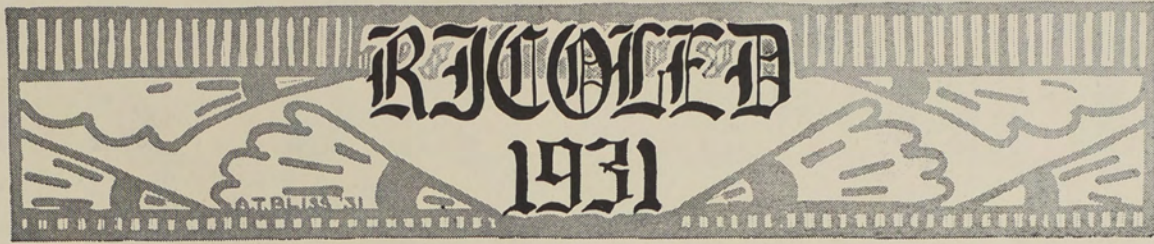
Vice President—M. ALICE GORE, '31

Secretary—CLAIRE MCKENNA, '31

Treasurer—FRED HUTCHINS, '33



STUDENT COUNCIL.—FEBRUARY-JUNE



Student Council

February-June

WITH its busy meetings every week, Student Council has this semester added much to the already long list of fine things which the Council has done for R. I. C. E. Perhaps the most beneficial of all innovations of the semester have been the plans to replace Friday morning Chapel with class meetings and the new point-system which will cause the honors of the college to be distributed more evenly.

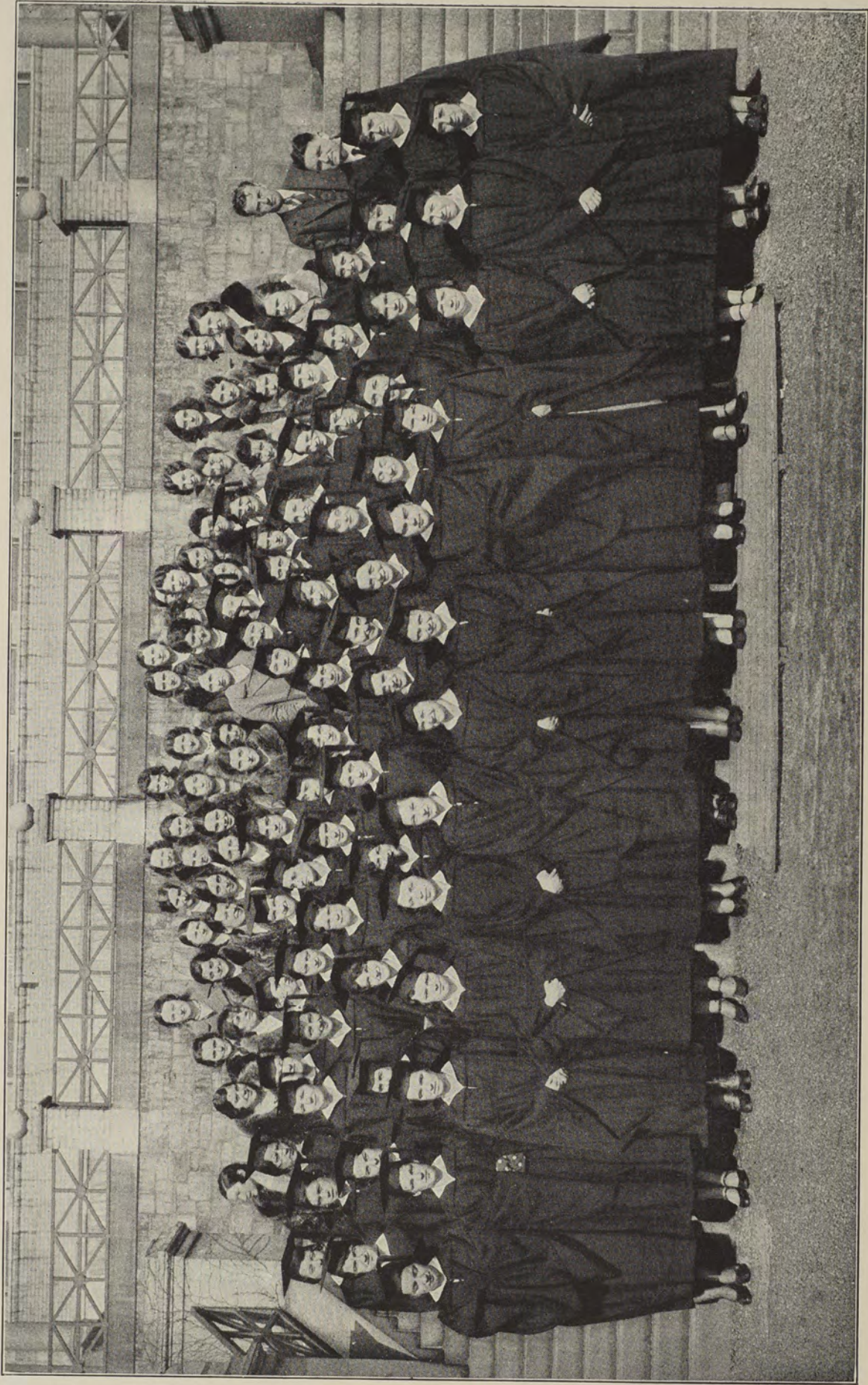
The final settlement of the standard college ring, the securing of college stationery, and a piano for Room 112 are but a few of the many other activities of this Council.

President—CLAIRE MCKENNA, '31

Vice-President—MARY THORNTON, '31

Secretary—CATHERINE COLEMAN, '32

Treasurer—FRED HUTCHINS, '33



THE KINSPRITS



The Kinsprits

THE KINSPRITS, the Senior Literary Society, meets once a month to discuss current literature over the teacups. The meetings are cozy affairs. Each member of the club is privileged to give his ideas about current literature and to listen to the opinions of his fellow members. From time to time, the Kinsprits journey to the Wayside Inn at Sudbury, Massachusetts, where they hold the last meeting of the year. Dinner is served at the Inn. After dinner, the Kinsprits go upstairs to the old ballroom to hold their last meeting. The trip is a delightful affair, and the members of the Kinsprits leave with regret because they know that it will be the last time they will meet as a group. They join hands and make a circle around the old seventeenth century ballroom, sing Alma Mater, and ring down the curtain on a delightful year.

President—MARY THORNTON, '31

Scribe—EVELYN EARNES, '31

Mistress of the Exchequer—KATHRYN PATT, '31

Hostess—MIRIAM COPLAN, '31

RECOLLED 1931



THE PRESS CLUB

THE PRESS CLUB has had a most successful and enjoyable year. The number of releases of news sent out by club members greatly surpasses the number of any preceding year in the history of the club. In addition to the regular publicity work of the college, the club has sponsored and conducted the newspaper reading contest, something really new in our college, and has also worked on the preparation and editing of the "Freshman Biblos," the first book of its kind to be published here at the college. The club has had charge of several assemblies and has invited excellent speakers to address the student body. All the attention of the members is not given to journalistic work, however. In January, members of the club enjoyed a delightful banquet at Miss Dutton's Green Room and attended the Opera, "Carmen." The club this year has adopted a bronze letter opener as club emblem. This is the standard favor given to all new members at the dinner party of the club at the close of each semester.

September

President—ANNE SULLIVAN, '31
Vice-President—MARGUERITE TEUBERT, '31
Secretary—MARY HAYES, '31

Treasurer—GERTRUDE COLEMAN, '31

February

MARY HAYES, '31
 ELSIE GIBSON, '31
 DOROTHY HAYES, '31

RECOLLED 1931



The Anchor

THE history of THE ANCHOR is comparatively short but indicative of success and progress. Our college magazine came into being three years ago. It became popular immediately, for a college publication had long been one of the cherished hopes of the student body. From small beginnings, it has grown to be a magazine truly worthy of R. I. C. E. It endeavors to be representative of the entire college. Every student should feel that THE ANCHOR belongs to him, and that as such he should support it wholeheartedly and willingly. The helpful advice of the faculty has always been available, and it is a factor for which the board has been duly grateful. We predict continued success for THE ANCHOR in future years and trust that the co-operation of the student body will always be as generous as it has been in the past.

Editor-in-chief—GERTRUDE COLEMAN, '31

Assistant Editor—AVIS MARDEN, '33

Business Manager—EDWARD H. CONNORS, '34

Secretary-Treasurer—ELIZABETH LAURENCE, '34



THE DRAMATIC LEAGUE



The Dramatic League

"ALL THE WORLD'S A STAGE," says Shakespeare. Many of the students at R. I. C. E. no doubt think the same as did the renowned dramatist. The membership of the Dramatic League is one of the largest among the clubs in the college, having passed the hundred mark.

Our coach, Professor Patterson, aims to give every member an opportunity to show his dramatic ability.

Due to the earnest coaching of Professor Patterson and the co-operation of the student players, several successful productions have been given this year; namely, "The Bishop's Candlesticks," "Uncle Jimmy," "Holiday," "She Stoops to Conquer," and "Arms and the Man."

September

President—CLAIRE MCKENNA, '31
1st Vice-Pres. RUTH LEONARD, '31
2nd Vice-Pres.—FRED HUTCHINS, '33
Secretary—CONSTANCE MORIN, '33
Treasurer—JOHN MCINNES, '33

February

HELEN REILLEY, '31
FRED HUTCHINS, '33
DOROTHY CAMPBELL, '32
CONSTANCE MORIN, '33
JOHN MCINNES, '33

RECOLLED 1931



ALPHA RHO TAU

THIS CLUB, still in its infancy, is rising rapidly to a prominent place among the college activities. Its members are not necessarily those students possessing artistic talent, but any having a deep interest in and a sincere appreciation of art. The Art Club has succeeded in displaying, in four exhibits of the year, outstanding works of Rhode Island artists together with noteworthy attempts of the student body. Deep in the hearts of all members of this organization are embedded the words of its motto: "Art rises tower-like," symbolized in the club pin chosen this past year.

	<i>February</i>	<i>September</i>
<i>President,</i>	EVA BUONANNO, '31	ABBY GRINNELL, '31
<i>Vice-President,</i>	MARY G. RYNN, '31	MARGARET RYDER, '31
<i>Secretary,</i>	CONSTANCE MORIN, '33	MARION MULVANEY, '31
<i>Treasurer,</i>	ELEANOR CARROLL, '33	ELEANOR CARROLL, '33
<i>Social Committee,</i>	CECILIA BLISS, '33	ANNE SULLIVAN, '31

RECOLLA 1931



THE GLEE CLUB

THE GLEE CLUB has enjoyed a very successful year under the direction of Professor Hosmer. Its members have been busy continually, practising for the various concerts given. In the early part of the year, a miscellaneous group of songs was presented at a Wednesday assembly. During the Christmas season, singing of some choice Christmas carols added to the holiday spirit. As its contribution to Junior Week, the Glee Club presented a beautiful cantata by Ethelbert Nevin. The present officers of the club are: President, Madeline Boyle, '32; Secretary-Treasurer, Barbara Bromley, '33; Librarians, Alice Hannan, '32; Mary Riley, '33; and Ruth Henderson, '33.

RECOLLED 1931



THE NATURE CLUB

A SPRING TANG in the air—red blood a-tingling and pulsating in the veins—joyous laughter spilling into the quiet of Lincoln Woods—the crackling and snapping of blazing twigs—the tantalizing fragrance of hot weinies and steaming chocolate—and the Nature Club picnic is on!

There are picnics and picnics but none comparable with these. Glad hearts and willing hands join in the pleasant task of appeasing ravenous appetites after a stimulating hike. Then follows a search for treasures of Mother Nature, or a congenial chat to quicken the spirit of fellowship and goodwill.

When the actualities have become a thing of the past, out comes the Scrap Book to revive the dear old memories of that picnic when four lambs strayed from the fold and had to be rescued, and one unassuming young member burned her weinies to shades of ebony.

President—ELEANOR MILLER, '31

Secretary—REGINA STANLEY, '32

Treasurer—FRANCES LYNCH, '33

RECOLLA 1931



ATHLETIC ASSOCIATION

THE history of the Athletic Association began at a meeting held late in the spring of 1930. Professor Waite and Dr. Ross, who were instrumental in bringing about the meeting, were chosen faculty advisers. The purpose of the association constitutionally stated is "to bring to the student body closer connection with the athletic activities of the college by means of a capable representation who shall have control of athletic affairs." The succeeding meetings were brimful of activities. Cheers and cheer-leaders, basketball for the girls both interclass and intercollegiate, the schedule for the men's team, ways and means of awarding the plaque of Play Day, swimming classes for the girls, the matter of joining the National Amateur Athletic Federation were some of the points enthusiastically discussed. At the end of the first semester of this year came graduation which meant the loss of our tireless and ambitious worker and president, Kenneth Riley.

During the second semester the slate of officers was as follows:

- President*—RUDOLPH LA VAULT, '33
- Vice-President*—MARY McINERNEY, '31
- Treasurer*—FRED HUTCHINS, '33
- Secretary*—HELEN CARROLL, '33
- Publicity Chairman*—GEORGE BLACKWELL, '31

RECOLLED 1931



GIRLS' BASKETBALL TEAM

A BLAST of a whistle—the thud of jumping feet. This, on a Wednesday afternoon, announces to an individual in the lower halls that girls' basketball is in session. On opening the door into the gymnasium, the same person may see twelve active girls in the midst of a bit of basketball practice. Along the sidelines are grouped others eager to take part in the exhilarating sport. On just such an afternoon as this, the Freshman squad defeated a team made up of upperclassmen.

March 12 was the red-letter day of the basketball season. On that day, R. I. C. E. Varsity played the Pembroke Juniors. During the last quarter of a hard fought game, the R. I. C. E. girls gained a lead that was held to the close. After the game, tea was served.

This year, the varsity team was ably led by its captain, Miss Mary Donovan, '32. With but three of the players leaving the team, next year's squad should be even more promising than the present one.

RECOLLED 1931



MEN'S BASKETBALL

WITH the entrance of the Freshman Class in 1930, the possibility of a fast squad to represent the College in basketball appeared much brighter than in previous years. Twelve men appeared for practice. Captain Kenneth D. Riley was re-elected to guide the destinies of the team for another season. Upon Mr. Riley's graduation in February, Mr. Waldon Poole was elected captain for the remainder of the season.

The best game of the season was played with Rockefeller Hall Quintet of Brown University on our home floor. The team defeated Rockefeller Hall, 16 to 10.

Season tickets were introduced this year to meet the expenses of the team. On the whole, much better basketball was played despite many handicaps.

The outlook for next year is brighter than at any previous time due to the development of a fast freshman squad and the loss of only two men by graduation.

RECOLLA 1931



FRENCH CLUB

THE new French Club, sponsored by Professor Cavicchia, head of the modern language department of R. I. C. E., is being received with greatest enthusiasm. It promises to be of benefit and interest to all the students of French. Its organization is as yet not fully completed, but plans are under way to make it one of the most active clubs in the College.

Many members have enrolled in the club, and there is a fine spirit of co-operation manifested which surely presages success in its future undertakings. Much credit is due to Professor Cavicchia for the establishment of this French Club which has in it such great value for so many students.

On March 23, the election of officers resulted in the following:

President—MARY MORAN, '33

Vice-President—JENNIE SAULINO, '32

Secretary—MARGUERITE BRENNAN, '33

Treasurer—RUDOLPH LAVault, '33

RECOLLECT 1931



ITALIAN CLUB

THE Italian Club was organized through the efforts of the Senior Class. One does not necessarily have to be of Italian parentage to become a member. A genuine enthusiasm for all things pertaining to Italian art, operas, and the beautiful romance language itself is all that is required for membership.

The officers of the club are:

President—ROSE FASANO, '31

Vice-President—JENNIE SAULINO, '32

Secretary—ELENA CHECCA, '32

Treasurer—MARY BYRNE, '32



THE 'TRIUMVIRATE'

"PROF"
BALDWIN

BET YOU
COULDN'T
DO IT!



'SEA FEVER'



'LIGHT
ABOVE'

Mm! Mm! Mm!
Would you
like to take a
walk?



'We Needa' Biscuit

Advertisements

RICOLED

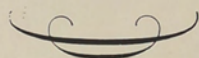
1931

Compliments

of the

SENIOR CLASS

1931



SAVE SYSTEMATICALLY

Woonsocket Institution for Savings

144 Main Street

Woonsocket, R. I.



Printers of College Annuals,
Catalogs, House Organs, Circulars,
Folders, Booklets, Posters,
Originators of Printing and Adver-
tising ideas and Direct-by-Mail
Campaigns

Phone GAspee 4800

BLACKSTONE VALLEY
GAS *and* ELECTRIC CO.

WE SPECIALIZE IN PARTY SLIPPERS

H. A. Hoskins Inc.

355 Westminster Street, Providence, R. I.

Tento Shoes

(for busy women)

base their reputation on long enduring comfort and style correctness.

THOMAS F. PIERCE
AND SON

Westminster and Dorrance Streets

One Piece Washable
Gym Suits

FOR SCHOOLS AND COLLEGES
IN ALL COLORS

Comfortable, Sensible and Inexpensive

John F. Cashman

Everything in Athletic Goods

34-35 EXCHANGE PLACE

*Visit the
beauty salon of*

**Larry
Lorenz**



Unequaled methods for the cultivation of beauty
... serving the most discriminating clientele.
Finger waving and hair cutting a specialty.

ASSOCIATES

Miss Landry, Miss Catino, Miss Beasley
Mrs. Ryder, Ernie Lorenz, Arthur Lorenz
Suite 406-407 New Industrial Trust Building
Providence, R. I. DExter 1171

**WALDORF
CLOTHING CO.**

212 Union Street
PROVIDENCE

Tuxedos and Dress Suits
For Sale and Hire

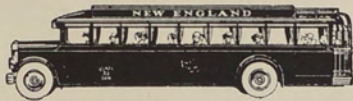
*Headquarters for
Caps and Gowns*

Compliments of

BROWN'S

The Ambassadors
DANCE ORCHESTRA

James C. Thornton, *Director*



**De Luxe Motor
Coach Service**

BOSTON
WORCESTER
HARTFORD
NORWICH
NEW YORK

**New England Coach
Terminal**

5 EDDY STREET PLANTATIONS 3470

CHARTERED COACHES FOR
ALL OCCASIONS



*A Subsidiary of the
N. Y., N. H. & H. R. R. Co.*



The Social Center
of the
Smart Young Set

The Biltmore's unusual facilities for entertaining . . . its hospitable atmosphere . . . exceptional cuisine make it the preferred social center.

Come and enjoy these advantages often.

PROVIDENCE
Biltmore

This book is printed on CHAMPION COATED BOOK PAPER

Paddock Paper Company

AGENTS

31 Pond Street, Providence, Rhode Island

GAspee 1451

THE OUTLET CO.

PROVIDENCE, R. I.

A. Slocum & Son

COSTUMERS

GREER'S

MUSCLE STRAPPING FACIALS
AND HAIRDRESSING

Suite 302-303

44 Washington Street

The

MARGARET GREER

Toilet Preparations

By Appointment PLantations 1145

EAST SIDE
Pheasant

An excellent place to hold Class
Dinners and Banquets. Exclusive
use of Dining Room after 8 P. M.,
with use of piano and radio.

Dancing may be enjoyed.

Menus submitted upon request.

Ample Parking Space

151-153 CUSHING STREET
Between Thayer and Brook Streets

Real Economy is the Big Idea of
FULL SOLES On Your Old Shoes

As long as the uppers are good, you can
have that comfortable, glove-like old shoe,
REBUILT. Mellion's method of pulling the
shoe together avoids the possibility of
spreading.

Shoes Dyed a Lustrous Black

Fabrics or leathers skillfully handled
and made to look like new.

MELLION BROS.

SHOE REPAIRING FACTORY
6 Market Square—Opp. Chamber of Commerce

HOOD'S MILK

A delicious drink with your school lunch

Oliver

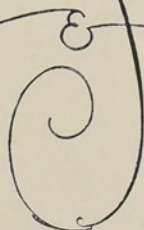
CLASS PHOTOGRAPHER

1931

true
REPRODUCTIONS
of
*Drawings and
Photographs*

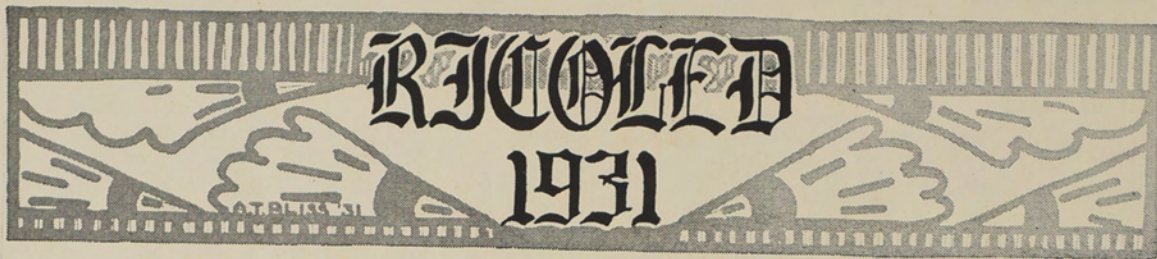
Specialists in Designs & Engravings
for School and College Annuals

Q
U
A
L
I
T
Y
!



S
E
R
V
I
C
E
!

The
BICKFORD
ENGRAVING & ELECTROTYPE CO.
20 MATHEWSON ST., - PROVIDENCE, R. I.



Autographs

