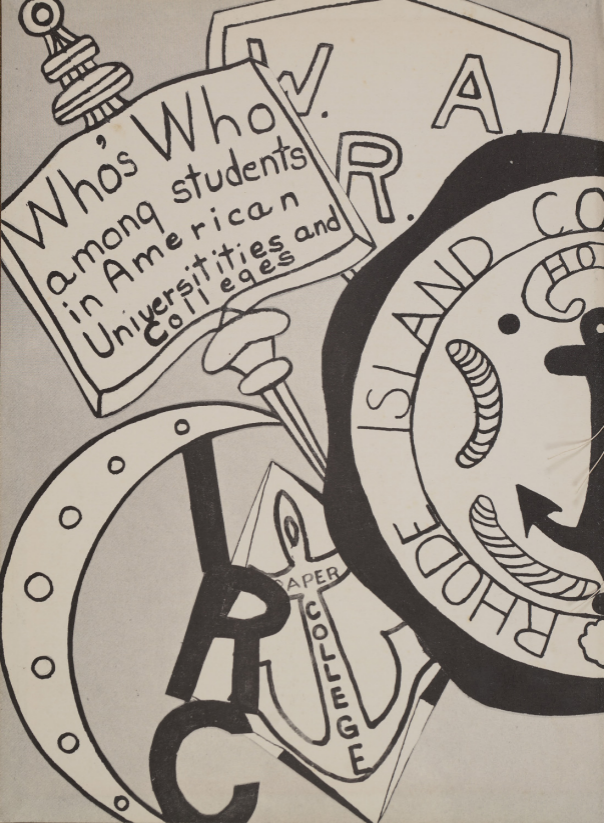




1957



Who's Who
among students
in American
Universities and
Colleges

ISLAND CO
RHO DE

PAPER
COLLEGE

C



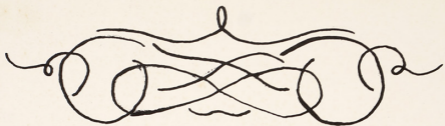
AD COR LOQUITUR

COLLEGE OF EDUCATION

C O I R

K
Φ

P
R
C
E
L



The Class of 1957 presents

THE RICOLED







RHODE ISLAND COLLEGE OF EDUCATION

PROVIDENCE

RHODE ISLAND

FOREWORD

The following pages represent our attempts to recall through photographs and the written word the events of the past academic year.

To the Seniors, we offer these pages with the hope that in the coming years they will serve to freshen the memories of our four years together at RICE — memories of studies, friendships, and good times that might otherwise be lost amid the realities of the present and the future.

With a realization that comes only with Commencement, we offer these pages to the Underclassmen as evidences of the fine things that are RICE — administration, faculty, academic and social activities.

Appreciate them, work hard for them while you still can, for these four short years of preparation for what might be your life's work can be relived only in memories. Make them full years so that your memories may be as ours will be — rich and full.

Jean Mitson



TABLE OF CONTENTS

DEDICATION
PRESIDENT'S MESSAGE
ADMINISTRATION
FACULTY
SENIORS
UNDERGRADUATES
ACTIVITIES
CLUBS
SPORTS
ORGANIZATIONS
HONORS
DIRECTORY
SUPPLEMENT

DEDICATION



And what of teaching? Ah, there you have the worst paid and the best rewarded, of all the vocations. Dare not to enter it unless you love it. For the vast majority of men and women it has no promise of wealth or fame, but they to whom it is dear for its own sake, are among the nobility of mankind.


Famous educators plan new systems of pedagogy, but it is the unknown teacher who delivers and guides the young. He lives in obscurity and contends with hardship. For him no trumpets blare, no chariots wait, no golden decorations are decreed. He keeps the watch along the borders of darkness and makes the attack on the trenches of ignorance and folly. Patient in his daily duty, he strives to conquer the evil powers that are the enemies of youth. He awakens sleeping spirits. He quickens the indolent, encourages the eager, steadies the unstable. He communicates his own joy in learning and shares with boys and girls the best treasures of his mind. He lights many candles which, in later years, will shine back to cheer him. This is his reward. Knowledge may be gained from books; but the love of knowledge is transmitted only by personal contact. No one has deserved better of the Republic than the Unknown Teacher. No one is more worthy to be enrolled in a democratic aristocracy, "King of himself and servant of mankind."

Henry van Dyke



WILLIAM C. GAIGE

. . . began his first full year as President of the college in September, 1953 as we began our freshman year. Together we became acquainted with the ways and traditions of RICE, together we share the memories of four years of leadership, learning and laughter.



PRESIDENT'S MESSAGE

You are too few, and we wish you could have stayed with us longer. Teaching is among the oldest of professions, but in its mass form as public school teaching, it is so different as to be almost a new profession.

Teaching is first of all an art, but like architecture, it has its scientific and technical aspects which can be learned and must be practiced. Many of you go where crowded classrooms and overworked teachers make difficult the practice of art and encourage the practice of technique.

It will be to your everlasting credit, if, during the crucial years ahead, while society seeks to solve the problems of educating its increased number of children, you practice your art with skill and courage, and insist that teaching shall always be a high profession.



BOARD OF TRUSTEES

WALTER F. FARRELL
MRS. JOSE M. RAMOS, A.B., A.M.
FREDERICK C. TANNER, M.E.
JAMES P. ADAMS, A.M., L.L.D.
CAROLINE E. HAVERLY, Ed.M.
MICHAEL F. WALSH, Ed.M.
ARTHUR F. HANLEY, B.S.

ADMINISTRATION

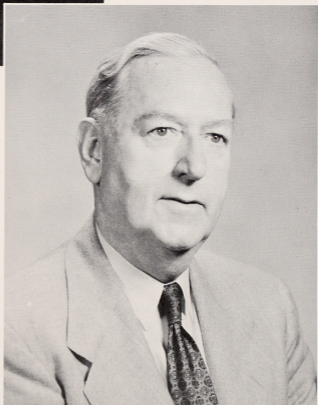


ADMINISTRATION

"... Patient in his daily duty, he strives to conquer the evil powers that are the enemies of youth."



WILLIAM C. GAIGE
A.B., A.M., Ed.D., Sc.D.
President



FRED J. DONOVAN
A.B., A.M., Ed.D.
Vice-President



DOROTHY R. MIERZWA
B.S., M.A., Ed.D.
Dean of Students



MARY M. LEE
Ed.B., Ed.M., Ed.D.
Director of Training



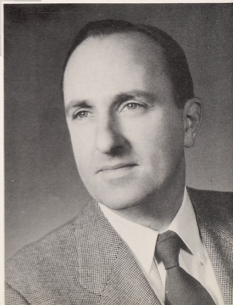
MARY T. THORP
Ed.B., Ed.M., Ed.D.
Director of Henry Barnard



W. CHRISTINA CARLSON
Ed.B., Ed.M.
Registrar

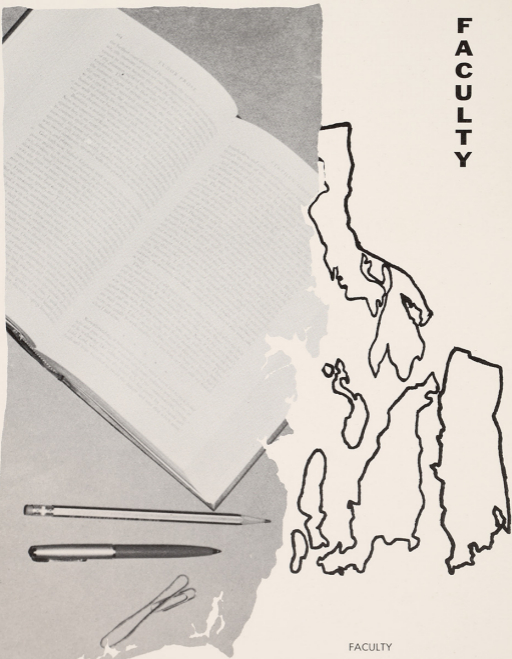


MARY G. DAVEY
Ed.B., Ed.M.
Public Relations



WILLIAM F. FLANAGAN
A.B., Ed.M., Ph.D.
Asst. Dir. of Ext. & Grad. Program

FACULTY



FACULTY

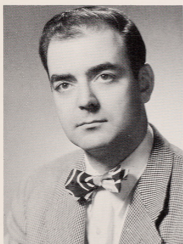
"... He communicates his own joy in learning and shares with boys and girls the best treasures of his mind."



NEVA L. ALLENDORF
Ed.B., Ed.M.
Health Education



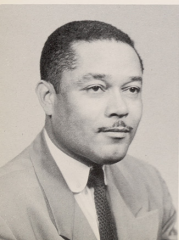
ERNEST C. ALLISON
A.B., A.M.
English



VINCENT A. ALOIA
A.B., D.S.S.
Econ. & Sociology



RUTH ALTMAN
A.B., A.M.
English



ROBERT T. AMOS
A.B., A.M., Ph.D.
Psychology



EDITH BECKER
B.F.A., M.F.A.
Art



RITA BICHO
Ed.B.
Music



ROBERT BROWN
B.P.E., Ed.M.
Physical Education



BILLIE ANN BURRILL
B.S., M.S.
Physical Education



S. ELIZABETH CAMPBELL
Ed.B., Ed.M.
Education



BARBARA S. CASSEDY
A.B., A.M.
Romance Language



CATHERINE CONNOR
A.B., A.M.
History



DOROTHY CROMPTON
B.A.E., A.M.
Art



C. OWEN EITHER
Ed.B., A.M.
Hist. & Pol. Sci.



BERNARD GORDON
B.S.
Biology



JOSEPH D. GRAHAM
A.B., A.M.
Speech



FRANK E. GREENE
Ph.B., A.M., Ed.D.
English



NELSON GUERTIN
A.B., Ed.B., A.M.
Romance Language



GERTRUDE T. HANLEY
Ed.B., Ed.M.
Education



LUCY F. HANLEY
B.S., Ed.M.
Health Education



GRACE D. HEALEY
B.L.I., Ed.M.
Speech



JAMES C. HERRICK
A.B., A.M.
Psychology



JOSEPH JARDINE
Hist. & Phil. of Ed.



MARY M. KEEFE
Ed.B., A.B., A.M., Ph.D.
Biology & Math.



THEODORE LEMESHKA
A.B., A.M.
Biology



RENATO LEONELLI
B.S., Ed.M., Ed.D.
Science Education



MARY E. LOUGHREY
A.B., A.M., Ph.D.
Romance Language



AVIS MARDEN
Ed.B., Ed.M.
Education



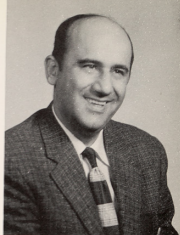
EDWARD McENTEE
A.B., LL.B., Ed.D.
R.I. Ed. & School Law



GERTRUDE MCGUNIGLE
A.B., A.M.
Music



RUSSELL MEINHOLD
A.B., M.S.
Science Education



CHRISTOPHER MITCHELL
A.B., Ed.M., A.M.
Mathematics



JOHN NAZARIAN
Ed.B., A.M.
Math. & Science



MARY C. NELSON
A.B., A.M., Ph.D.
History



VIRGINIA O'CONNER
Ed.B.
Physical Education



HERBERT PERLUCK
A.B., A.M., Ph.D.
English



GRACE PREISSER
A.B., A.M.
English



HELEN E. SCOTT
A.B., A.M., Ed.D.
Education



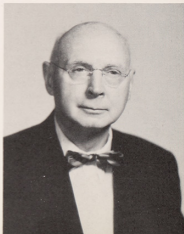
WILLIAM E. SLOAN
Ed.B.
Education



CHESTER E. SMOLSKI
B.S.Ed., A.M.
Geography



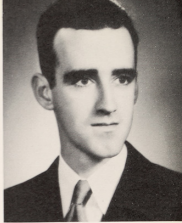
AMY THOMPSON
A.B., A.M.
English



CHARLES UNDERHILL
Ph.B., A.M.
Mathematics



EVELYN WALSH
A.B., A.M.
History



JAMES WHITE
A.B., A.M.
English



MARION WRIGHT
Ed.B., A.M.
Geography



HARRIET ZURLINDEN
A.B., A.M.
Science Education



NORMA G. WEEKS
A.B.
Bursar

KATHERINE L. CUZNER
B.S., A.M.
Librarian



L
I
B
R
A
R
I
A
N
S



ROSE SNELL
Ed.B., Ed.M.
Assistant Librarian



JUDITH A. GAGNON
A.B.
Assistant to the Librarian



CLARA LOITMAN SMITH
M.D.
College Physician



HELEN L. KEENAN
R.N.
College Nurse

M
E
D
I
C
A
L

D
E
P
T.

O
F
F
I
C
E

S
T
A
F
F

MISS VIOLET E. LORD



Standing, left to right: Kathleen M. Burns, Ida Maccarone, Elaine Bertini, Vivian O. Holden, Helen McCarthy, Seated: Violet Lord.



Standing, left to right: Mary T. Doran, Helen Papadopoulos, Daniel Whitcomb, Eunice M. Gilpin. Seated: Norma Weeks.



Henry Barnard Office Staff.
Seated, left to right: Catherine A. McGuinness, Diane S. Bocchicchio, Doris E. Gibson.

BARNARD



Seated, left to right: Isabel McGuinness, Theresa Barone, Madeline Ellsworth. Standing, left to right: Kathleen F. Kelley, Agatha B. Lavallee.



Seated, left to right: Agnes G. Raymond, Hope L. MacAndrew, Dorothy M. Crompton. Standing: Harriet V. Zurlinden, James F. Duffy, Lucy F. Hanley.



Seated, left to right: Mary R. Doherty, Jennie B. Deebo, Inez E. Jordan. Standing, left to right: Donald Lyons, Clement J. Hasenfus.

FACULTY

Seated, left to right: Geraldine A. Carley, Natalie A. Alger, Maybelle W. Magee. Standing, left to right: Bruce E. Bradford, William E. Sloan.



Seated, left to right: Helen Triggs, Marjorie L. Bean, Mary G. Colton. Standing, left to right: Mary H. Zajac, Helen Murphy, Dorothy Keniston.



Seated, left to right: Dr. Mary T. Thorpe, Prudence D. Fish, Patricia J. Essley. Standing, left to right: Ann Hajian, Regina B. Gill.



STATE CRITIC TEACHERS

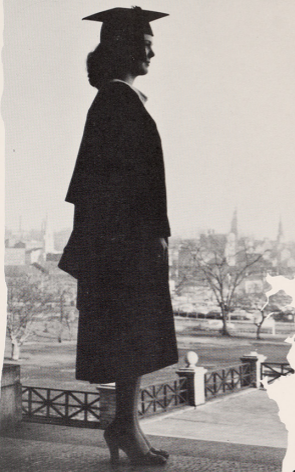
February, 1956 - January, 1957

Miss Mildred C. Alger
 Miss Theresa Barone
 Miss Anne J. Bourke
 Miss Gertrude A. Callanan
 Miss Mary A. Canavan
 Miss Geraldine Carley
 Miss Catherine M. Casserly
 Miss Mary C. Colton
 Miss Kathleen T. Connor
 Mrs. Irene F. Connors
 Mrs. Aileen H. Coughlin
 Mrs. Mary J. Culp
 Miss Jennie Deebo
 Miss Beatrice B. Donovan
 Miss Mary R. Doherty
 Miss Madeline Ellsworth
 Miss Prudence D. Fish
 Miss Rosanna C. Flanagan
 Miss Addie M. Gage
 Mrs. Anna A. Garland
 Miss Catherine M. Gibbons
 Miss Mary H. Gladhill
 Mrs. Irene B. Grady
 Mr. Fred J. Gregory
 Miss Ann Hajian
 Mr. Clement J. Hasenfus
 Miss Anna C. Hawthorne
 Mrs. Elinore F. Hennesey
 Miss Marie C. Kelley

Miss Agatha Lavallee
 Miss Emily A. Leonard
 Miss Mary A. Lynch
 Miss Maybelle Magee
 Miss Mary V. McCoart
 Miss Mary C. McCusker*
 Miss Mary C. McGovern
 Mrs. Isabella McGuinness
 Miss Margaret G. McKenna
 Miss Anna K. McKivergan
 Miss A. M. McLaughlin
 Miss Beatrice M. McNamee
 Miss Eleanor C. McPhillips
 Miss Carmella M. Mond
 Miss Brenda E. Mulligan
 Miss Catherine T. Murray
 Mrs. Helen O'Neil
 Mr. Benjamin A. Peterson
 Miss Marie L. Petronella
 Mrs. Charlotte A. Salisbury
 Miss Elinor I. Shea
 Miss Anne C. Stevens
 Miss Ann E. Sullivan
 Miss Gertrude M. Sullivan
 Miss M. Hazel Sullivan
 Miss Helen M. Triggs
 Miss Mary M. Waterman
 Mrs. Dorothy B. Young

* Deceased

SENIORS



SENIORS

"... He lights many candles which, in later years, will shine back to cheer him."



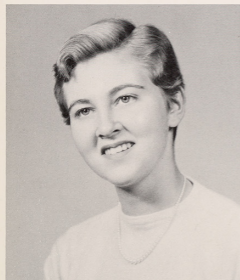
LILIAN AZAR

Kappa Delta Pi 4; Anchor 2, 3; Dramatic League 1, 2; Newman Club 1, 2; Ski Club 2; W.R.A. 1-4; Stunt Night 3, 4.



FILOMENA BARCHI

Kappa Delta Pi 3, 4; Newman Club 2-4; Choir 1-4; May Day 1, 2.



ANNE FRANCES BELLUCHE

Anchor 2-4; Newman Club 1-4; Dramatic League 1, 2; F.T.A. 1-4; W.R.A. 1-4; Choir 3, 4; Stunt Night 1-4; May Day 1, 2.

ELEMENTARY



ARTHUR BERGERON

Student Council 1-4, Vice-Pres. 4; Anchor 2-4, Sports Ed. 3, 4; M.A.A. 1-4; Soccer 1-4; Basketball 1; Track 2; Eastern States Conf. 2; Stunt Night 1, 2, 4.



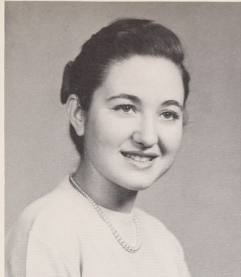
FLORENCE ANITA BRIGGS

F.T.A. 3; Dramatic League 1,2; Ski Club 3; W.R.A. 1-4; Choir 1-3; Stunt Night 3; May Day 1, 2; Daisy Chain 2.



MARY CASSIDY

Student Council Treas. 3; Anchor 2, 3; Newman Club 2-4; W.R.A. 1-4; Stunt Night 2, 3; May Day 1-3, Queen's Court 1, 3.



TERESA M. CORRERA

Anchor 1-3; Newman Club 3, 4; W.R.A. 1-4; F.T.A. 2; Daisy Chain 2; May Day 1.



SANDRA EILEEN CROVITZ

Student Council 3; Anchor 1-3, Assoc. Ed. 1, Editor 2, 3, Ed. Assoc. 3; F.T.A. 1; W.R.A. 1-4; Stunt Night 1, 3, 4, Ch. 4; I.R.A. 1; Dramatic League 1; R.I. Press Conf. 3, Ch. 3; Exec. Bd. Columbia Scholastic Press Assoc. 2; Hazing Comm. 3.



JANE FRANCES DAILEY

Choir 1-4, Pres. 4; Newman Club 3, 4; W.R.A. 1-4; Stunt Night 3; May Day 1.

ELEMENTARY



NATALIE ANN DIPONTE

President's List 1, 3; Kappa Delta Pi 3, 4, Sec. 4, Historian 3; Student Council 2; Class Vice-Pres. 2, Soc. Comm. Ch. 3; Newman Club 3; Anchor 1; Dramatic League 1; F.T.A. 1; W.R.A. 1-4; Stunt Night 2, 3; "Little" Eastern States Conf. 1; May Day 1, 2; Daisy Chain 2.



SHELIA ANN DAVIS

I.R.C. 1, 2, 4; Newman Club 2-4; F.T.A. 1-4; W.R.A. 1-4; Stunt Night 2-4; May Day 1.



VANDERLYN ERICKSON

Ricoled 1; Stunt Night 2-4; May Day 1, 2; W.R.A. 1-4.



JANE E. FAIRMAN

Anchor 2-4; *Dramatic League* 1, 2; *F.T.A.* 1, 2; *Stunt Night* 3, 4; *W.R.A.* 1-4; *May Day* 1, 2, *Comm.* 4; *Dance Comm.* 2; *Daisy Chain* 2.



EVELYN ANN FARRELL

Who's Who in American Colleges and Universities; *Student Council* 1-3; *Class Pres.* 1, 2, *Class Vice-Pres.* 1, *Social Comm. Ch.* 3; *Ricoled* 2, 3, *Literary Ed.* 2; *Anchor* 2, 3, *Feature Ed.* 4; *Newman Club* 4; *Dramatic League* 1; *Handbook* 1; *W.R.A.* 1-4; *Stunt Night* 1, 2, 4; *Queen's Court Soph. Hop* 2; *Queen's Court All College Ball* 1-3; *Cheerleader* 2-4; *May Day* 1, 2.



PATRICIA FAISON

Who's Who in American Colleges and Universities; *Class Pres.* 4; *Anchor* 2, 3, *Feature Ed.* 3; *Handbook Ed.* 2; *Newman Club* 1; *Ski Club* 2, 3; *Stunt Night* 4; *W.R.A.* 1-4; *May Day* 1, 2.

ELEMENTARY



OLIVE FORTUNE



MARY JANE GREY

Kappa Delta Pi 3, 4; Anchor 3; Student Council; F.T.A. 1; Newman Club 2-4; W.R.A. 1-4; Choir 3, 4; Stunt Night 3, 4; May Day 1, 2; Dance Comm. 3.



GEORGETTE GRISE

Newman Club 1-4; W.R.A. 1-4; Stunt Night 1, 2, 4; May Day 1, 2; Cheerleader 1, 2.



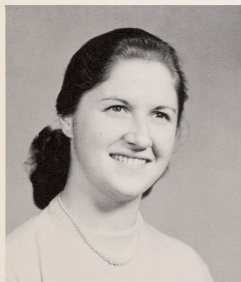
EDWINA M. GUGEL

Anchor 2-4; Sports Ed. 3; Dramatic League 1-4; Choir 3, 4; Newman Club 4; W.R.A. 1-4; Stunt Night 3, 4; May Day 1-4; Daisy Chain 2; Soph. Hop Comm. 2.



JOAN-SANDRA HAYMAN

Student Council 4; Choir 1-4; Canterbury Club 1, 2; F.T.A. 1-4, Treas. 2; W.R.A. 1-4; Stunt Night 1-4; May Day 1, 2.



LOIS-BELLE HAYMAN

Class Treas. 1; Choir 1-4, Vice-Pres. 3; Canterbury Club 1-3; W.R.A. 1-4; F.T.A. 1-3; Stunt Night 1-4; May Day 1, 2.

ELEMENTARY



PATRICIA ANN HEANEY

Choir 1; Newman Club 2, 3; W.R.A. 1-4;
Stunt Night 2, 4; May Day 1, 2, Comm.
4; Daisy Chain 2.



HELEN HOARD

Newman Club 1-4; May Day 1, 2; W.R.A.
1-4.



KATHRYN LOUISE HUMPHREY

Dramatic League 1, 2; W.R.A. 1-4; May
Day 1, 2.



CYNTHIA A. KELLEY

Social Comm. Co-Ch. 4; Stunt Night 1-4;
Newman Club 2, 3; W.R.A. 1-4; May Day
1, 2, Queen's Court 2, Comm. 4;



HELEN KIERNAN



RUTH BROWN LUSSIER

W.R.A. 3, 4.

ELEMENTARY



ROSALEEN MANTZARIS

President's List 1, 2; Kappa Delta Pi 3, 4, Historian 4; Anchor 1; Choir 1-4; F.T.A. 1-4, Pres. 3; W.R.A. 1-4; "Little" Eastern States Conf. 2; Stunt Night 1, 3; May Day 1, 2.



MARILYN MATRUMALO

Dramatic League 2; F.T.A. 1-3; Newman Club 1-4; Stunt Night 1, 4; May Day 1, 2, Comm. 4; Dance Comm. 4.



MAUREEN TERESE McGRATH

Anchor 2, 3, Makeup Ed. 3, Exchange Ed. 3; Class Treas. 3; Helicon 2; Newman Club 1-4, Sec. 3; W.R.A. 1, 2; Stunt Night 2, 4; Columbia Scholastic Press Assoc. Conference 3; May Day 1, 2.



MARSHA JUDITH McMICHAEL

May Day 1, 2, Ch. 4; *Ricoled*, Art Ed. 4; Class Social Comm. Ch. 4; Debating Society 1-4, Recording Sec. 3, Corresponding Sec. 4; Anchor 1-3; Dramatic League 2, 3; Newman Club 2-4; F.T.A. 1; Stunt Night 1-4; W.R.A. 1-4; I.R.C. 2,3; Dance Committees 2-4; Eastern States Conf. 4; Cheerleader 3, 4; Marshall 2-4.



KATHERINE MARIE McNANNA

Anchor 2, 3; Debating Society 1, 2, Treas. 2; Dramatic League 1-4; I.R.C. 1-4; Newman Club 1; Stunt Night 1-3; W.R.A. 1-4.



SYLVIA MORRONE

Dramatic League 1; Stunt Night 1-4; May Day 1, 2, 4; Dance Comm. 2; Sophomore Hop Queen's Court; Eastern States Conf. 4; Anchor 2, 4; Marshall 2, 3.

ELEMENTARY



EILEEN MULLEEDY

Newman Club 1-4; W.R.A. 1-4; May Day 1; Daisy Chain 2.



JOAN GLEASON MURPHY

Anchor 1-4; Dramatic League 1-3, Alpha Psi Omega; Stunt Night 1-4, Ch. 2; Newman Club 1, 2; W.R.A. 1-4.



LOUISE MURRAY

Student Council 3; Choir 1-4, Sec. 1-3; Stunt Night 1-3; May Day 1, 2.



TERESA NARDI

Kappa Delta Pi 4; Choir 1-4; F.T.A. 3;
Newman Club 1-4, Pres. 2; W.R.A. 1-4;
May Day 1, 4.



SYLVIA NERNEY

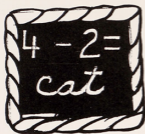
President's List 1, 2; Kappa Delta Pi 3;
May Day 1, 2.



ANN P. NOACK

Kappa Delta Pi 4; F.T.A. 3, 4; W.R.A. 3, 4.

ELEMENTARY



SHEILA M. O'DONNELL

Anchor 1; Dramatic League 1; Newman Club 1-4; F.T.A. 1; Ricoled 4; W.R.A. 1-4; Stunt Night 3, 4; May Day 2, 4; Dance Comm. 2; Daisy Chain 2.



NANCY JANE OGG

Choir 1, 2, Social Comm. Ch. 3, 4; Class Social Comm. 2, 3; Dramatic League 1; Handbook 3; F.T.A. 1; Stunt Night 1-4; Dance Comm. 2, 3; Marshall 2, 3.



DELPHINA E. OLIVER

Newman Club 3, 4; W.R.A. 1-4; Stunt Night 3; May Day 1, 2, 4; Kappa Delta Pi 3, 4; Dramatic League 1.



DOUGLAS CARDOZA PINTO

Kappa Delta Pi 3, 4, Treas. 4; Class Vice Pres. 1-3; Student Council 4; M.A.A. 1-4; Soccer 1-3.



MARIE B. POULIN

F.T.A. 1-3; Newman Club 1-3; May Day 1, 2.



IRMA SINISCALCHI RAYMOND

Kappa Delta Pi 4; Anchor 1-3; Choir 1-3; Dramatic League 1, 2; W.R.A. 1-4; F.T.A. 1; Stunt Night 1, 3, 4; May Day 1, 2, 4; Daisy Chain 2.

ELEMENTARY



CAROL THORPE RITZINGER

Stunt Night 1, 4; W.R.A. 1-4; F.T.A. 2-4;
Newman Club 2-4.



CHARLOTTE ROSENBERG

Anchor 1-3, Makeup Editor 1, 2, Business
Ed. 3; Columbia Scholastic Press Assoc. 2;
Dramatic League 1; F.T.A. 1, 2; Ricoled 4;
Stunt Night 1, 2; May Day 1, 2, 4; Dance
Comm. 1, 2.



JOAN CAROL RUGGIERI

President's List 1; Kappa Delta Pi 3, 4;
Anchor 1, 2; Choir 1, 2; Dramatic League
1; F.T.A. 2-4; W.R.A. 1-4; Stunt Night 3;
May Day 1, 2, 4.



ANN MARIE SALISBURY

Anchor 2, 3; Class Vice-Pres. 4; F.T.A. 2;
Newman Club 2, 4; W.R.A. 1-4; Stunt
Night 1-4; May Day 1, 4, Comm. 4.



CARMEL L. SCARDERA

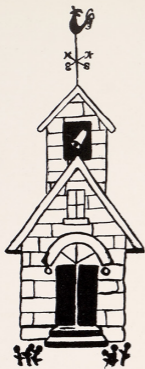
Class Sec. 3; Anchor 1-4, Exchange Ed. 3;
Choir 1-3, Vice-Pres. 2; Dramatic League
1-4, Sec. 2, 3; I.R.C. 1-4, Pres. 3; F.T.A.
1-4; Newman Club 1-4; Stunt Night 1-4;
W.R.A. 1-4.



MARIE SEARS

Anchor 1; Dramatic League 1, 2; F. T.A.
1-4; Newman Club 1, 3, 4; W.R.A. 1-4,
Pres. 3, Exec. Bd 2, 3; Stunt Night 3, 4;
May Day 1, 2.

ELEMENTARY



ALBERTA M. SEPE

Anchor 1, 2; Dramatic League 1, 2; Handbook 4; W.R.A. 1-4; Stunt Night 1-4; May Day 1, 2.



MARGARET ANN SORRENTINE

Choir 1, 2, 4; F.T.A. 1, 4; Newman Club 2-4; W.R.A. 1-4; Stunt Night 1, 3, 4; May Day 1, 3, 4.



CLAIRE MARGARET SOUSA

F.T.A. 1-4; W.R.A. 1-4; Stunt Night 2; May Day 1, 2.



JOAN SOUZA

Kappa Delta Pi 3, 4; Anchor 1; Dramatic League 2; F.T.A. 1; Newman Club 1, 2; W.R.A. 1-4, Social Comm. 2; Stunt Night 1, 2, 4; May Day 1, 2, 4.



ELEANOR A. TAYLOR

Choir 1-3; Dramatic League 1; W.R.A. 1-4; Stunt Night 1-3; May Day 1, 2.



LOIS TESTA

Choir 2, 3; Class Soc. Comm. Ch. 1; W.R.A. 1-4; Stunt Night 1-4; Dance Comm. 3; May Day 1, 2.

ELEMENTARY



DELFINA TRINDADE

W.R.A. 1-4; Cheerleader 1, 2; Stunt Night
1-4; May Day 1, 2.



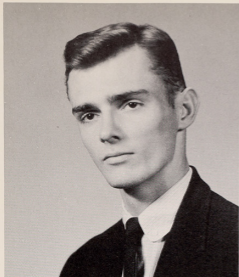
RAYMOND J. VALLEE, JR.

Choir 1, 2; Kappa Delta Phi 2-4; F.T.A.
1; M.A.A. 1-4; Stunt Night 2, 3.



L. EUNICE VARIEUR

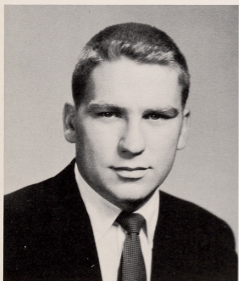
Choir 1-3; W.R.A. 1-4; Stunt Night 1, 2,
4; May Day 1, 2, 4; Daisy Chain 2.



ROBERT BARRETT

Canterbury Club 2-4; M.A.A. 1-4.

ENGLISH - SOCIAL



RICHARD MICHAEL BROCHU

Kappa Delta Phi 2-4, Chaplain 3; M.A.A. 1-4; Basketball 2, 4; Soccer 2, 4, Trainer 3; Track 2; Stunt Night 1, 2, 4.



MARYANN CAHIR

Anchor 1-3, Business Ed. 3; Newman Club 2, 3; Ski Club 3; W.R.A. 1-4; Stunt Night 1-4; May Day 1, Queen's Court 2, 3.



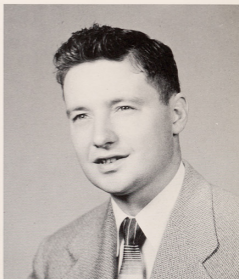
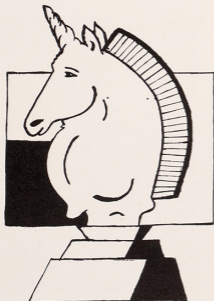
JOAN M. CALISE

Anchor 1; I.R.C. 4; Newman Club 4;
Ricoled, Literary Ed. 4; Stunt Night 3, 4;
May Day 1, 2; W.R.A. 1-4.



ELENA CRISCIONE

Anchor 2, 3; Choir 4; Dramatic League 1;
Newman Club 1, 2, 4; Ski Club 2-4, Sec.
3; W.R.A. 1-4; Stunt Night 3, 4; Ricoled
4; May Day 1, 2.



JAMES EDWARD DALY, JR.

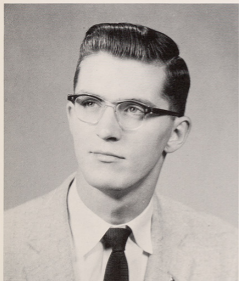
Kappa Delta Pi 3, 4, Vice-Pres. 4; Student
Council 3; Newman Club 3; M.A.A. 2-4;
Anchor 3; Ricoled 3; Soccer 3; Basketball
2, 3; Track 3.



JOYCE DE COTA

Anchor, Art Ed. 1, 2; Stunt Night 3, 4;
May Day 1, 2; W.R.A. 1-4; Cheerleader
1-3.

ENGLISH - SOCIAL



CHARLES DELEHANTY

Anchor 3, 4; Choir 3, 4; Dramatic League
1, 2; Kappa Delta Phi 2-4, Chapter Rep.
4; Newman Club 3, 4; Ski Club 2-4, Pres.
4; M.A.A. 1-4; Stunt Night 2-4.



ROBERT W. ELLINGWOOD

Kappa Delta Pi 3, 4; M.A.A. 1-4.



ROBERT J. FRAPPIER

M.A.A. 1-4; Stunt Night 1, 4; Helicon 4.



RICHARD EDWARD HESLIN

Who's Who in American Colleges and Universities; Kappa Delta Pi 4; Class Pres. 3, Social Comm. Ch. 1; Dramatic League 1; Kapa Delta Phi 2-4, Treas. 3, Pres. 4; Debating Society 2-4; Newman Club 2; M.A.A. 1-4, Sec. 3; Helicon 3, 4; Basketball 1; Soccer 1-3; Stunt Night 1-4; Eastern States Conf. 3; May Day Comm. 4.



JOYCE R. GREENE

Who's Who in American Colleges and Universities; Kappa Delta Pi 3, 4; Newman Club 1-4, Sec. 2, Pres. 3, 4; W.R.A. 1-4; Stunt Night 2-4; May Day 1, 2; Daisy Chain 2.



ELAINE KERTULLA

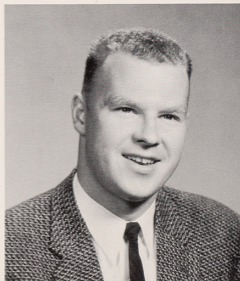
Ricoled, Assoc. Ed. 4; W.R.A. 1-4; Stunt Night 3, 4; May Day 1, 2; Daisy Chain 2; Columbia Scholastic Press Assoc. 4.

ENGLISH - SOCIAL



MAUREEN LOOMIS

Anchor 2-4, Assoc. Ed. 3; Ski Club 2-4; Hazing Comm. 3; May Day 1, 2; Daisy Chain 2; W.R.A. 1-4; F.T.A. 1; Stunt Night 2-4.



EVERETT MAXWELL

Who's Who in American Colleges and Universities; Student Council 1, Pres. 4; Social Comm. Ch. 2; Newman Club 4; M.A.A. 1-4, Pres. 3; *Ricoled* Sports Ed. 4; Stunt Night 1-4; Basketball 1-4; Soccer 2-4; Track 2.



HELEN FRANCES MCGOVERN

Anchor 1, 2, Feature Ed. 2; I.R.C. 1; Debating Society 2-4, Vice-Pres. 3, Sec.-Treas. 4; Newman Club 1-4, Exec. Bd. 2-4; May Day 1, 2; Daisy Chain 2; Ricoled Photo. Ed. 4; Dance Comm. 1; W.R.A. 1-4; Stunt Night 3, 4; May Day Comm. 4.



JEAN PAULA MITSON

Who's Who in American Colleges and Universities; Ricoled 3, Editor-in-Chief 4; Dramatic League 2, 3; Debating Society 2-4, Program Ch. 2, Sec. 3; Newman Club 2-4; F.T.A. 1; W.R.A. 1-4; Stunt Night 3, 4; May Day 1, 2, Comm. 4; Daisy Chain 2; Columbia Scholastic Press Assoc. 4; Eastern States Conf. 4.



MARIA RAO

Choir 1-4; I.R.C. 4; Newman Club 3, 4; May Day 1, 2; W.R.A. 1-4.



BARBARA TOMEI

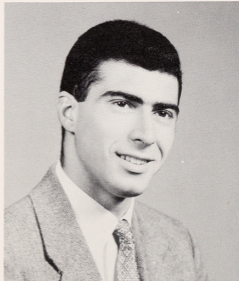
Who's Who in American Colleges and Universities; Kappa Delta Pi 3, 4; President's List 1, 2; Class Treas. 2; Student Council 3, 4, Student Coordinator 4; Anchor 2; Debating Society 1-4, Pres. 2, 3, Vice-Pres. 1, 4; Dramatic League 1-4; Alpha Psi Omega 4; Handbook 1, 2; I.R.C. 1-4; Newman Club 1-4; Ricoled 4; W.R.A. 1-4;

ENGLISH - SOCIAL



HAROLD JOHN SIPPLES

Helicon Editor 4; Choir 1-4; Debating Society 1; Dramatic League 1-4, Alpha Psi Omega; Newman Club 4; Stunt Night 1-4.



JOHN ROBERT VEADER

Class Treas. 4; Kappa Delta Phi 2-4; Vice-Pres. 3, 4; M.A.A. 1-4, Vice-Pres. 3; Basketball 1-4; Soccer 1-4, Capt. 4; Stunt Night 1-4.



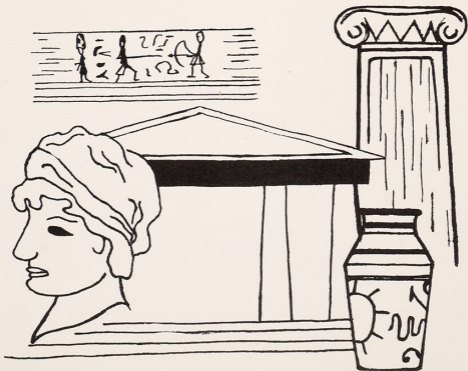
BARBARA ANN WEST

Anchor 1, 2; Choir 3, 4; Debating Society 2, 3, Treas. 3; Dramatic League 1-4, Sec. 3, Vice-Pres. 3, 4, Alpha Psi Omega, Vice-Pres. 4; I.R.C. 1, 2; Newman Club 1-4; Ski Club 3; W.R.A. 1-4; Ricoled 4; Helicon Ass't. Ed. 4; Stunt Night 1-4; May Day 1, 2; F.T.A. 1, 2, 4.



BENJAMIN WINSOR

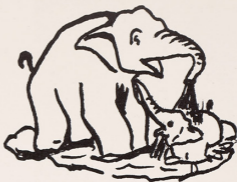
Kappa Delta Phi 2-4, Chaplain 4; Student Council 1-3, Treas. 3; Dramatic League 1, 2; Choir 1-4; Canterbury Club 2-4, Vice-Pres. 2; F.T.A. 1; M.A.A. 1-4, Treas. 2, 3; Basketball mgr. 1-3; Soccer mgr. 1-3; Stunt Night 1-4, Ch. 3; Track 3; Hazing Comm. 3; Dance Comm. 2.





MARGARET M. ANDERSON

Stunt Night 1, 2, 4; May Day 1, 2; Daisy Chain 2; W.R.A. 1-4.



FRANCES BOEKER

Choir 1-4; F.T.A. 2-4; Newman Club 2, 3; W.R.A. 1-4; May Day 1, 2.



SYLVIA CLULEY

Choir 3; Canterbury Club 1, 2; Anchor 3; W.R.A. 1-4; Stunt Night 2, 3; May Day 1, 2.



JOAN M. COLLINS

Newman Club 1-4; May Day 1; W.R.A. 1-4; Daisy Chain 2.



MARY THERESA CULLINAN

Choir 1-4; Dramatic League 3, 4; I.R.C. 1-4, Treas. 2, Sec. 4, (World Affairs Council 1, 4); F.T.A. 1-4; Newman Club 1-4; Stunt Night 3, 4; May Day 1; Daisy Chain 2; W.R.A. 1-4.

EARLY CHILDHOOD CURRICULUM



ATTILIA DELESANTA DAGESSE

President's List 1; Kappa Delta Pi 3, Soc. Comm. Ch. 4; Choir 3; Newman Club 1-4; Ricolled 4; W.R.A. 1-4; Stunt Night 3, 4; Eastern States Conf. 3; Jr. Prom Comm.; May Day 1, 2.



CLAUDETTE M. DUFRESNE

Who's Who in American Colleges and Universities; Student Council 1, 2, 3; Assembly Comm. 1, 2, Ch. 3; Anchor 2, 3; Choir 1-4; Dramatic League 1-4, Vice-Pres. 2, Pres. 3, Alpha Psi Omega; Debating Society 3, 4; Newman Club 3, 4; Helicon 3; F.T.A. 1-4, Vice-Pres. 3; W.R.A. 1-4; I.R.C. 1-4; Stunt Night 3, 4, Co-Ch. 4;



MARY LOIS GARDENER

President's List 1, 2; Kappa Delta Pi 3, 4; Choir 1-4; Dramatic League 1; I.R.C. 3, Program Ch. 3; F.T.A. 1, 2; W.R.A. 1-4, Sec.-Treas. 2; Stunt Night 3; May Day 1, 2.



RITA FRANCES HARTINGTON

Kappa Delta Pi 3, 4; Dramatic League 1-4, Pres. 4; F.T.A. 1, 2; W.R.A. 1-4; Ricoled 4; Stunt Night 1-4; May Day 1, 2.



JUDITH ANN HUMPHREY

F.T.A. 2, 4; Dramatic League 3, 4, Alpha
Psi Omega; W.R.A. 1-4; Stunt Night 4;
May Day 1, 2.



DOLORES JOSEPHINE McCARTHY

Choir 3, 4; Dramatic League 3, 4, Alpha
Psi Omega; W.R.A. 1-4; Stunt Night 3, 4;
Student Curriculum Comm. 3.

EARLY CHILDHOOD CURRICULUM



MARY MILLS

F.T.A. 2-4; W.R.A. 1-4; May Day 1, 2.



MARY M. MORAN

Choir 1; F.T.A. 2; Newman Club 3, 4;
W.R.A. 1-4; Stunt Night 3, 4; May Day
1, 2.



JOYCE L. MOTTE

Kappa Delta Pi 4; Anchor 1; Dramatic
League 1, 2; F.T.A. 1; Newman Club 1,
2, 4, Sec. 1, 2; W.R.A. 1-4; Stunt Night
1, 4; May Day 1; Cheerleader 1-4, Capt.
2; Dance Comm. 3; Marshall 2, 3.



ELAINE JOYCE PERRY

Anchor 1; Dramatic League 1, 2; W.R.A.
1-4; Stunt Night 1, 3; May Day 1, 2; Usher
1; Marshall 1-4.



ANN E. SHEEHAN

Stunt Night 4; May Day 1, 2; W.R.A. 1-4.



JANE ELIZABETH VEYERA

Ricoled 4; Debating Society 2, 3; Newman Club 2, 3; F.T.A. 2; Stunt Night 2-4; W.R.A. 1-4; May Day 1, 2.

EARLY CHILDHOOD CURRICULUM



LOIS FISHER

Choir 3; W.R.A. 1-4; May Day 1, 2.



MARGUERITE HERRERA

I.R.C. 1, 2; Ski Club 2-4; F.T.A. 1; Newman Club 1-4; Debating Society 3, 4; W.R.A. 1-4; Stunt Night 1, 3, 4; May Day 1, 2.

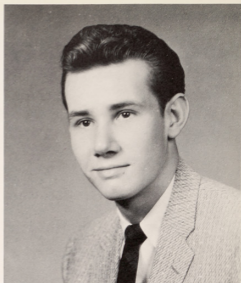


EVELYN MACKEY

Class Treas. 3; Student Council 4; W.R.A. 1-4, Treas. 1, Sec. 2, Vice-Pres. 2, Social Comm. Ch. 4; Ricoled Business Mgr. 4; Newman Club 2; F.T.A. 1; Stunt Night 3, 4; Assembly Comm. Ch. 4; May Day 1, 2, 4; Swampscott Conf. 3.



MATH - SCIENCE



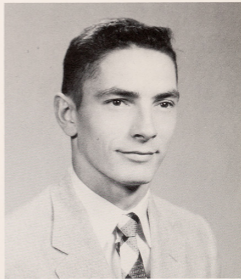
PETER MORLEY

Debating Society 1; M.A.A. 1-4.



WANDA PECZKA

President's List 1; Kappa Delta Pi 3, 4;
Ski Club 2, 3; W.R.A. 1-4; May Day 1, 2.



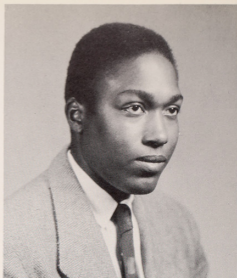
ANDREW JOSEPH POLOWSKI

F.T.A. 1-4; M.A.A. 1-4; Stunt Night 1-4;
Curriculum Comm. 2; Soccer 2, 4; Basket-
ball 2-4; Track 2.



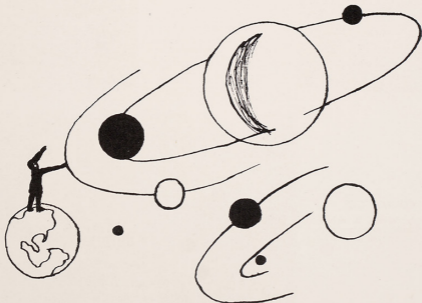
EDWARD J. VALLEE

F.T.A. 1; Kappa Delta Phi 2-4; Choir 1, 2;
M.A.A. 1-4; Stunt Night 1-3; Basketball
1-4.



IRVING L. WILLIAMS

*Who's Who in American Colleges and
Universities*; President's List 1; Kappa Del-
ta Pi 3, 4, Pres. 4; Class Sec. 1-4; Kappa
Delta Phi 2-4, Sec. 3, 4; Choir 1-4; M.A.A.
1-4; Stunt Night 1-4.





MAY DAY COMMITTEE

L-R.: M. McMichael, Chairman; C. Kelley, C. Scarders. Rear: D. Trindade, R. Hartington, E. Mackey, D. McCarthy.



FIRST SEMESTER

L-R.: C. Kelley, Soc. Com.; P. Faison, Pres.; A. Salisbury, Vice-Pres. Rear: I. Williams, Sec.; M. McMichael, Soc. Com.; J. Veador, Treas.

SENIOR CLASS OFFICERS

SECOND SEMESTER

L-R.: M. McMichael, Soc. Com.; C. Scarders, Treas.; A. Salisbury, Vice-Pres. Rear: R. Heslin, Pres.; C. Kelley, Soc. Com.; I. Williams, Sec.



SENIOR COMMITTEES

Front, L-R.: M. Cassidy, Vespers; P. Heaney, Commencement; M. McGrath, Cap & Gown Day. Rear, L-R.: B. West, Speakers; M. Sears, Class Day.



CONTINUM

This is our day:

A stillborn dawn passed

Painfully from the womb of night.

Here we hesitate,

Where others have stood and expired.

The moment draws near

For which years have perished,

Squashed beneath our plodding feet.

We stand,

Poised on the promontory of awareness.

We must act —

By using the tortured hours spent

Fixing wisdom from a transitory world —

But, here we sense

What our analytical minds can not formulate.

We hear an emptiness

Revealed in the lull of the wind,

A lacking to rack the senses of the mind.

Now we listen

To the sound of no sound screaming in the brain.

We are hearing

As others, dying of their humaneness, did

Before they wrote their partial truths.

We find

The mystical sources of their realities.

This is our day:

Time to attach promise to the sound of stillness,

To find a doctrine to end our dying.

Here we stand:

Hoping for deliverance.

Robert Frappier

CLASS HISTORY

Entrance exams and personal interviews safely behind us, we entered R.I.C.E. in September, 1953 still nervous but sincere in our determination to make these coming four years ones of great accomplishment scholastically and socially. Spirited juniors waited eagerly outside Room 102 to inform us of the Hazing Regulations — beanies, lollipops, Succession of the English Kings memorized, one sneaker, one shoe. Nominations, campaign slogans, and elections gave us a chance to show our class spirit which rivalled even that of our sister-class. Then we settled down to the serious task of preparing for teaching. For Stunt Night we gave dramatic expression to our hopes for the new RICE in "Dream College of the Future." Christmas cheer soon brought us to the realities of mid-terms which we survived in spite of Biology! Spring came and with it plans for May Day. We made charming flowers and foreign dancers as we pranced and cavorted on the State House lawns as our contribution to the Centennial theme of the day. And then our first year was over — could graduation be far behind?

On our return to the college in the fall, we were smaller in number but even greater in spirit as we cheerfully waited in line for our third-choice electives and seriously studied the list of required subjects for our newly chosen areas of specialization. The new college became a goal which we no longer talked about but one for which we actively campaigned as sandwich-men, silk-screen artists, roof-painters, and house-to-house canvassers in order to convince the public that they should "Vote Yes for RICE." We felt we really earned the victory celebration after election day. In the midst of this campaigning, we planned for our "Blue Moon" festivities at the Soph Hop and for our "This Is Your Strife" script for Stunt Night which couldn't lose — but somehow did. Practice for our Raggedy Ann and Andy dance for May Day and for Class Day's Daisy Chain soon were upon us; we departed in June trying to solve Dr. Lee's scheme for determining first semester participation and training.

In September we learned the results of Dr. Lee's unsolved scheme and half the class talked of participation at Barnard, the other half of American Lit. and History, while we all talked of Economics! It was finally our turn to enforce Hazing Rules and we fared well on lollipops though the freshmen often forgot their beanies, buckets, and bricks. As upperclassmen, we were very interested in parties, dances, sports, and more parties. This Stunt Night we were going to win with our version of the Academy Awards. Instead, we had a Merry Un-Victory Party. Soon mid-years came during which we breathlessly awaited Dr. Lee's training assignments and half the class was off to try their hand at responsible teaching in the schools of the State. During evening class meetings we planned for our Junior Dinner-Dance at the Biltmore and listened to the thrice-told tales of the training students' daily encounters. June came and we inherited the "top of the ladder" from the departing Seniors.

Our long-thought-of glorious entrance in September as Seniors was somewhat dimmed because part of the class was not with us. First semester soon involved us in Student Council elections, graduation pictures, the Bond Rally with Senator Pastore, ground breaking as the site of the new RICE, and our very last mid-year exams. Second semester the Seniors were back to full strength as we attended the Senior Breakfast and the Faculty Tea. The wounds of previous Stunt Nights were completely healed by the soothing balm of victory on our "Mount Olympus Holiday!" Then, serious thoughts for the future as we planned for Vespers, Class Day, and Commencement. Anxiously we filed applications for teaching positions and then learned of our appointments with sighs of relief. We had finally made it!

With light hearts we donned our robes for the first time on Cap and Gown Day, but we took them off after Commencement with mixed emotions. RICE had been so good to us!

Joan Calise, Jean Mitson

CLASS WILL

The Senior Class of 1957, realizing that they must leave, do:

- Mr. Gaige—Memories of the four years past,
We hope that they will always last.
- Mr. Donovan—A group of men so very wise,
Who never forget their coats and ties.
- Miss Mierzwa—Thanks for being nice to us,
Even when we made a fuss.
- Miss Lee—Many gallons of gas so she can see,
Students in training as far as Westerly.
- Miss Thorpe—More children whom she'll never
shun,
And find something perfect for every one.
- Miss Carlson—For clairvoyance, a bottle of windox,
So prior to exams we'll see our index.
- Miss Davey—A document with gold-lettered gilt-
ing,
With her name to hang in our new building.
- Mrs. Allendorf—A group of students who for
breakfast don't eat,
Three cigarettes and a chocolate treat.
- Mr. Allison—A chisel, drill, and a hammer,
To pathe the way for English grammar.
- Mr. Aloia—A community for which he's yearned,
On which his seniors can practice all they've
learned.
- Miss Altman—The trials and tribulations of Moby
Dick,
Because many of her seniors get seasick.
- Mr. Amos—A large and sound-proof hall,
In which to practice his southern drawl.
- Mrs. Becker—A book on how to assemble a mo-
bile,
So her students can express just what they feel.
- Miss Bicho—Many keys both black and white,
On which to display her musical might.
- Mr. Brown—A long, beautiful, and thick goatee,
That his winning team may shave with glee.
- Miss Burrill—May Day festivities that really run
smooth,
And an aspirin for her headache to soothe.
- Miss Campbell—Students who have gotten the
knack,
Of not writing over the blackboard crack.
- Mrs. Cassidy—Hopes that she enjoyed the year,
It was nice for us to have her here.
- Miss Connor—Memories of a trip so fond,
When we visited Boston and beyond.
- Miss Cuzner—Library books that repel the rain,
So the pages it will not stain.
- Mr. Danilowicz—Less projectors like the De Vrey,
So the poor Sophs won't cry.
- Mr. Either—Flowers pink and flowers blue,
To decorate Room 102.
- Mr. Gairloch—Blue ribbons awarded at the Senior
Tea,
For those who paid on time the activity fee.
- Mr. Gordon—Students whose interests never
wane,
In why ants have segments and a horse a mane.
- Mr. Graham—A stage complete with gelatin lights,
To lead the way on opening nights.
- Mr. Greene—Modern translations of William
Shakespeare,
For students who find the course not too clear.
- Mr. Guertin—A Chemin De Fer to wend his way,
From RICE to Barnard on a cold, stormy day.
- Miss Hanley—Students who practice principles of
teaching,
When for satisfaction they are reaching.
- Miss Healey—Students who enact the "Little Match
Girl,"
So sadiistically her hair will curl.
- Mr. Herrick—A group of students who never
weary,
Of applying Psychology and all its theory.
- Mr. Horan—A class who so well knows civilization,
That they can sleep a thirty minute nap.
- Mr. Jardine—Editions of Mann and Barnard the
Great,
To prove their philosophies really do rate.
- Miss Keefe—Freshman who won't shiver and
shake,
When told they must dissect a snake.
- Miss Keenan—A pulse recorder and stethoscope,
For sickly students who say there's no hope.
- Mr. Lemeshka—Many thick and wooly rugs,
Under which to sweep his bugs.
- Mr. Leonelli—A class who can read Craig,
Without feeling utterly dismayed.
- Miss Loughrey—The French and all their literary
glories,
(P.S.: We really enjoy the stories.)
- Mr. McEntee—To show that we are full of loyalty,
We'll purchase his text so he can get royalty.
- Miss McGunigle—A group of Sophs who sing
without fuss,
The trials and tribulations of the "Big Yellow
Bus."
- Mr. Meinhold—Goggles, lab sheets, and chemicals
rare,
For students to handle with utmost care.
- Mr. Miner—Pictures so that you may know,
The senior class before we go.
- Mr. Mitchell—Students who know how to cast out
by nine,
Because it saves them so much time.
- Mr. Nazarian—Knowledge of the fundamentals of
math,
So students can figure out their wrath.
- Miss Nelson—A class who will not sound dis-
tressed,
When they say, "What? Another test!"
- Miss O'Connor—Gym suits with a style so rare,
For students with a fashion flair.
- Mr. Perluck—A tentative Anchor complete with
corrections,
To prophesy forthcoming elections.
- Mrs. Preisser—So that professionalism is easier to
reach,
Proper expression of the parts of speech.
- Miss Scott—Students who realize the art of read-
ing,
Exceeds the importance of hourly eating.
- Dr. Smith—Longer hours in the Medical Room,
To meet the students of sickness and gloom.
- Mr. Smolski—A book of psychology by Freud,
To learn why the students don't understand the
spheroid.
- Miss Snell—Students who are not unnerved,
When trying to get books which are on reserve.
- Mr. Sullivan—A ruler, pencil, and all the rest,
To compute problems in measurement and test.
- Miss Thompson—The New York Times book sec-
tion,
For notes to her student's collection.
- Mr. Underhill—A book of codes on the logarithm,
So students can figure with slope-sliding
rhythm.
- Miss Walsh—Students who do not abhor,
The trials and tribulations of war.
- Mr. White—Memories we hope you consider nice,
From this year you've spent at RICE.
- Miss Wright—More exams on which to write,
"Don't stop now—give it a fight."
- Freshmen—A future that is promising and bright,
With our college on a brand new site.
- Sophomores—Hazing roles, lollopps, and all the
rest,
That helped make you, our sister class, the best.
- Juniors—Caps and Gowns and memories so dear,
That accompany you in your senior year.



"... He lives in obscurity and contends with hardship."

JUNIORS



Front, L-R.: N. Chermis, M. Pacheco, P. Coderre, J. Lavallee. Rear, L-R.: J. Palmer, G. Bilodeau, R. Pinto, K. Mallet, P. Dalton, M. Dufresne, J. Blanco.



Front, L-R: B. Glod, K. Greene, M. Maynard, P. Swanson, E. Perry, A. Cornell. Rear: B. Smith, P. Leonard, M. McVicker, A. McDermott, C. Magee, J. McAteer, V. Mangione.



Front, L-R: B. Goslin, L. Terwilliger, J. Ducharme, B. Burke, E. Roderick, M. Welch. Rear: C. Drainville, C. Casey, G. Brady, R. Mickelson, J. Sadlier, M. Cardosi, A. Bellino, D. Pacheco.



Front, L-R: B. Colby, V. DeConcillis, B. Croghan, G. McCaughey, C. Greene, A. Calderiso. Rear: A. Bellanger; F. Makowski, D. Scanlon, P. Rowse, A. Lesperance, M. Murphy, G. Art, M. McCaffrey.



Front, L-R: M. Maynard, M. McCaffrey, M. Welch, S. Quinn. Rear: R. O'Connell, J. Judge, P. Leonard, B. Berlam.



Front, L-R: A. Hopkins, M. Jackson, A. Riccardi, B. Taber, P. McDole, J. Lavallee. Rear: N. Barlett, C. Capron, N. Ousley, P. Wildpret, N. Farmer, F. Demarjian, C. Trigo.



FIRST SEMESTER

L-R: P. McDole, Vice-Pres.; R. Berlam, Pres.; M. McVicker, Sec.; G. McGaughey, Treas.

C
L
A
S
S

O
F
F
I
C
E
R
S



SECOND SEMESTER

Front, L-R: G. McGaughey, Treas.; J. Judge, Pres.; M. Cardosi, Vice-Pres. Rear, L-R: M. McVicker, Sec.; C. Trigo, Soc. Com.

S
O
P
H
S



Front, Left to Right: J. Briggs, J. Paperelli, R. Joseph. Second Row: R. Vallely, N. Payne, A. Hobson. Third Row: S. Laffen, E. McAleer, K. Kenny.



Front, Left to Right: A. Cahill, M. Carmody, J. Todd, E. Moloney, A. Peczka. Second Row: P. Weeple, M. Thomson, M. Downes, G. Bourgeois, T. Jarosz, E. Gallogly, J. McPhillips.



Front, Left to Right: P. McVay, J. Fanning, M. Brazeil, P. Dusseault, F. Rao. Second Row: D. Trump, R. Marsden, A. Petsching, G. D'Amico, G. DiStefano, A. DeAndrade.



Front, Left to Right: P. Cavanaugh, G. Rossi, A. McMillan, C. Hulcup, J. Hammarlund, S. Lombardi.
 Second Row: L. DiSteffano, M. Barnes, D. Moore, R. Deneault, F. Mitchell, J. Wuerker, E. Spencer, N. Gontarski.



Front, Left to Right: J. Burnes, R. Goucher, M. Gilmartin, D. Fontaine, A. Davis, P. Ucci. Second Row: M. Trainor, M. Maynard, J. Doyle, J. Staknis, A. Feeley, J. Pezzullo, M. Canis, J. Brett.



Front, Left to Right: J. Johnson, D. Wilson, I. Surowiec, E. Davis, C. Carter. Second Row: M. Boyd, C. Heywood, A. Spas, J. Hedfield, C. Vanable, R. Maloney, E. Hartington.



Front, Left to Right: A. Corsair, J. Carey, A. Briggs, R. Oberg, M. Magill. Second Row: E. DeMoranville, B. Casey, B. Plante, J. Caranci.



Front, Left to Right: G. Eccleston, S. Thompson, N. Quinn, C. Chermis, H. Day, J. Wade. Second Row: S. Gallop, B. Stewart, J. Bernier, J. Levesque, B. Hackett, C. Marine, D. MacDonald, C. Zoglio.



Front, Left to Right: B. Crocker, B. Swanson, M. Sgambato, A. Schifino, M. Quirk, C. Boyko. Second Row: T. Rocha, H. Conlon, H. Guillotte, W. Crocker, D. Babbitt, P. Kanarian, M. Ethier, C. Kenyon.



Front, Left to Right: N. Newton, E. Garvin. Second Row: L. Richard, C. Palmisciano, J. Dooley. Third Row: A. Swass, C. Vitale, A. Murphy.



FIRST SEMESTER

Front: G. Bernier, Pres.; C. Hulcup, Sec.; W. Crocker, Treas.



C
L
A
S
S

O
F
F
I
C
E
R
S

SECOND SEMESTER

Front: P. Smith, Vice-Pres.; C. Hulcup, Sec.; W. Crocker, Treas.; D. Babbitt, Pres.



F R O S H



Front, Left to Right: G. Croce, P. McConnell, B. Cohen, H. Diamond, S. Smith, Second Row: C. Martineau, P. Micone, G. Davis, N. Rogers, C. Talbot, Third Row: D. Nelson, L. Spacagna, P. Bennet, J. Saunders, K. Schultz.



Front, Left to Right: J. Norris, E. Capuano, M. Casey, A. Pascale, P. Hughes. Second Row: D. McDonald, P. Coughlin, M. Higgins, J. Quinn, L. August. Third Row: E. Ryan, G. Steiner, J. Brown, F. Bloomfield, D. Heslin.



Front, Left to Right: M. Tracey, R. Smith, P. Langton, C. Walsh, J. Guellette. Second Row: J. Murphy, M. Abbenate, B. Hughes, N. Kofahl, B. Gubala. Third Row: A. Ruthiewicz, M. Hart, S. McGurn, K. Farmer, M. Molloy.



Front, Left to Right: M. Grady, B. O'Brien, M. Hartley, E. Anderson, E. Neary. Second Row: C. Gilroy, B. Wolslegel, M. McFarland, R. Contantino, P. Keenan. Third Row: E. Guey, E. Fogarty, C. Munson, R. Powers.



Front, Left to Right: S. Guernick, P. D'Amico, D. Masi, J. Bray, G. DeLuca. Second Row: J. Aquiar, T. Drury, J. Lambert, R. Creter, P. Eastwood. Third Row: R. Records, S. Phillips, W. Peacock, K. Olson.



Front, Left to Right: J. Manard, E. Kelly, P. Egan, D. Lawton, A. Boudreau. Second Row: T. Sweeney, R. Destreps, W. Harrison, F. Peters, J. Flynn. Third Row: J. Rodgers, C. Heeder, E. Slater, M. Fullam, M. Mooradian.



Front, Left to Right: B. Camara, H. Kearns, J. Louth, S. Army, M. Monaghan. Second Row: E. Moreau, D. DiCola, D. Caranci, L. Bargamian, P. Coughlin. Third Row: K. Schultz, N. Kofahl, M. Duhamel, G. Chesbrough, S. Fairhurst.



Front, Left to Right: D. Simonson, J. Mulligan, R. Green, J. Pinsonneault, L. Ryan. Second Row: S. Capron, J. Reposa, N. Barker, M. Foley, M. Santilli. Third Row: W. Polofsky, A. Brown, H. Dyer, I. Frattarelli, C. Horan.



Front, Left to Right: N. Alviti, M. Petisce, J. Turbitt, J. Smith, M. Quinn. Second Row: A. Maginn, E. Barry, R. Tomasetti, A. Venagro, G. Clarke. Third Row: M. Kaloostian, H. Lowy, J. Sanzen, J. Lachapelle, P. McCabe.

CLASS OFFICERS — FRESHMAN CLASS



Front, Left to Right: K. Schultz, Vice-Pres. Second Row: J. Bray, Social Chairman; J. Louth, Sec.; E. Neary, Treas.; B. O'Brien, Social Chairman. Third Row: F. Peters, Pres.



A C T I V I T I E S



“. . . the love of knowledge is transmitted only by personal contact.”



F
R
E
S
H
M
A
N
H
A
Z
I
N
G

HARVEST

H
O
P



S
T
U
D
E
N
T
C
O
U
N
C
I
L
D
A
N
C
E

"WUNDEBAR
TANZIG"





Queen,
Anita LeClaire,
and Her Court



S
O
P
H
O
M
O
R
E

H
O
P



QUEEN, BARBARA TOMEI,
AND HER COURT



*A
Royale
Affair*



A
L
L
C
O
L
L
E
G
E
B
A
L
L



*Treasure
Island
Trot*



*Treasure
Island
Trot*



S
E
N
I
O
R
T
E
A





S
E
N
I
O
R



B
R
E
A
K
F
A
S
T

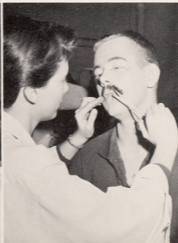


DRAMATIC LEAGUE

On November 19 and 20, the members of the Dramatic League under the direction of Mr. Joseph D. Graham presented "Anastasia" which starred Eleanor Gallogly as Anastasia, Joe Meynard as Bounine, and Arline Kiven as the Dowager Empress.



MAKE-UP!!



General Bounine and his friends rescue a young woman from the waters of the Seine because they have been stricken by her resemblance to Her Imperial Highness, Princess Anastasia, heir to the Romanof throne, who was said to have been killed with her entire family in the Bolshevik Revolution of 1917. After careful tutoring, she is presented to Russian nobility and eventually wins the acceptance of her grandmother the Dowager Empress. On the night of her formal presentation as the Imperial Princess, Anastasia suddenly disappears leaving unsolved forever the mystery of her true identity.



P
L
A
Y

P
R
O
D
U
C
T
I
O
N

B
O
N
D

R
A
L
L
Y



The Faculty and Students conducted their second bond rally to make known to the public the needs of RICE. This fall we urged the voters to approve a referendum which would provide additional funds for the previously approved new college plant. These scenes are from the Students' Rally at which the Hon. John O. Pastore was guest and principal speaker.

G
R
O
U
N
D
B
R
E
A
K
I
N
G



"Our hopes and dreams
have come to fruition."

December 27, 1956 Governor Roberts, President Gaige, Dr. Adams, Chairman of the Board of Trustees of State Colleges, and representatives of the Faculty and Student Body participated in the official ground-breaking ceremonies at the site of the new college just north of Mount Pleasant High.

Dr. Adams overturned the earth with the golden spade in the name of the "hundreds and thousands of young people who will benefit from what we are doing here today."





SENIOR STUNT NIGHT

Seniors won Stunt Night 1957 with a presentation of their version of what takes place on a "Mt. Olympus Holiday". Co-Chairmen Claudette Dufresne and Sandra Crovitz led the class to its first Stunt Night victory.





Berobed gods and goddesses watched from their thrones as specialty acts presented their gifts in honor of Jupiter's birthday.





SOPHOMORE STUNT NIGHT

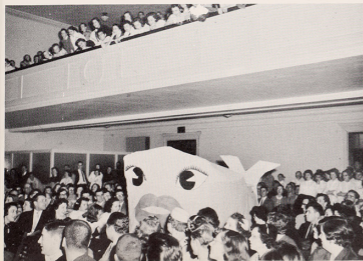
The Sophomores' sponsoring of "Presley for President" won them second place under the direction of Carol Hulcup and Pat Smith. The nominating convention's efforts proved futile when Elvis was electrocuted by his own guitar at the instigation of Cashus Como.





JUNIOR STUNT NIGHT

"Dopey Dick" led the Juniors a hard chase over the high seas as the old sea-captain directed the search for the pink whale that had swallowed a valuable treasure before his very eyes. The skit which consisted of original music and lyrics was directed by Georgette Bilodeau.





FRESHMAN STUNT NIGHT

"Time Marches Backwards" was the theme of the Freshman's first Stunt Night effort directed by John Bray. The time machine sped an American male back through the years in an attempt to find one century in which man was not dominated and thwarted by the aggressive female.



**C
L
U
B
S**



“. . . Dare not to enter it unless
you love it.”



DRAMATIC LEAGUE MEMBERS

Front left to right: H. Day, M. Best, E. Kelly, A. Murphy, A. Corsair. Rear: L. Gaucher, B. Tomei, M. Dufresne, J. Blanco, J. Bray, H. Sipples, D. Babbitt, J. Meynard, C. Horan, L. Richards, D. McCarthy, Mr. Joseph D. Graham, Advisor.



Front left to right: P. Hughes, M. Jackson, B. West, R. Hartington. Rear: M. Carmody, C. Zoglio, E. Gallogly, P. D'Amico, G. DeLuca, G. Schooley, C. Dufresne, C. Scardera, J. Brown.



DRAMATIC LEAGUE MEMBERS

First Semester Officers: M. Jackson, Treas.; R. Hartington, Pres.; A. Murphy, Point Ch.; E. Gallogly, Sec.



Second Semester Officers: Front: E. Gallogly, Sec.; B. West, Pres.; A. Murphy, Vice-Pres. Rear: C. Zoglio, Point Ch.; J. Bray, Treas.

DRAMATIC LEAGUE

The Dramatic League is one of the most interesting and advantageous organizations at RICE. Students who are interested in any phase of the theatre are eligible to join; being able to act is not the prime requisite. Opportunities are provided for learning and participating in staging, lighting, directing, costuming, make-up, business managing, and advertising.

Membership in the Mu Rho Cast of Alpha Psi Omega, the National Dramatic Honor Society, offers recognition for the deserving. To be eligible for Alpha Psi Omega, the student must obtain a certain number of points which are awarded for acting, directing, workshop productions, or committee work in any of the League's presentations.



Senior Members of Alpha Psi Omega. Front, left to right: B. West, C. Scardera, D. McCarthy. Rear: H. Sipples, R. Hartington, C. Dufresne, B. Tomei, Mr. Joseph D. Graham.



DEBATING SOCIETY MEMBERS

Front, left to right: M. McMichael, H. McGovern, P. Ucci, B. Tomei, A. Pascale. Rear: B. West, J. Mitson, J. Lambert, J. Palmer, R. Heslin, R. Hackett, M. Herrera, A. Schifino.

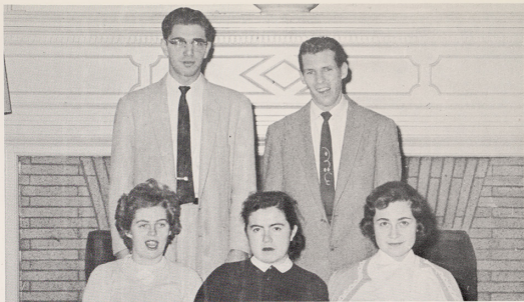


Officers, left to right: H. McGovern, Sec-Treas.; B. Tomei, Vice-Pres.; P. Ucci, Pres.; M. McMichael, Corres. Sec.

DEBATING SOCIETY

An effective debater is one who can reason logically, organize facts and evidences and present them in a poised and persuasive manner. These attributes of a good debater are also attributes of a good teacher; the Society, therefore, affords its members opportunities to learn techniques useful to their profession while they enjoy themselves.

Members match wits with other debaters throughout New England, and participate in the Brown Novice Tournament and R. I. Model College Congress. For the first time this year members were sent to participate in the National Tournament at the University of Virginia.



FUTURE TEACHERS OF AMERICA MEMBERS

Front, left to right: B. West, S. Davis, A. LeClaire. Rear: J. Blanco, R. Hackett.

FUTURE TEACHERS OF AMERICA

F.T.A. holds bi-monthly meetings with the purpose of furthering the interests of young people in the field of teaching and of aiding them in becoming more successful teachers. These purposes are accomplished through informal panel discussions, guest speakers in the field of education, movies and special projects.

This year F.T.A. centered its interest in the field of the handicapped and the viewing of teaching at home and abroad. In connection with this project, a field trip was taken to the Meeting Street School.

Each year a joint Christmas Dance is sponsored with the members of Kappa Delta Pi, the National Honor Society at RICE.



Shelia Davis, Vice-Pres.; A. LeClaire, Treas.; Not Shown, J. Wuerker, President.



INTERNATIONAL RELATIONS CLUB

Front, left to right: M. Ellis, E. Gallogly, A. Richardl. Rear: C. Greene, P. Leonard, K. Schultz, C. Martino, N. Rogers, J. Wade.



Officers: M. Ellis, Vice-Pres.; E. Gallogly, Pres.; P. Leonard, Treas.

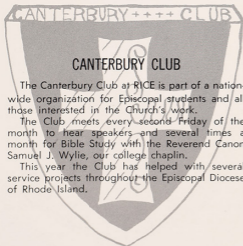
INTERNATIONAL RELATIONS CLUB

The purpose of the I.R.C. is to foster an understanding of current events and world problems. The members of the club accomplish this aim by having as speakers at their meetings foreign students, exchange teachers and members of the college who have visited other countries. The I.R.C. is closely connected with the World Affairs Council in Providence which sponsors a United Nations observance. Members look forward to the annual conference of the Association of International Relations Clubs. Another outstanding event is the club's annual fall banquet.



CANTERBURY CLUB

First row, left to right: S. Capron, N. Farmer, M. Jackson, E. Perry. Second row: C. Heywood, D. Pacheco, J. Todd, C. Martino, M. C. Ohla, S. Fairhurst, J. Wade, E. Davis. Third row: P. Leonard, C. Venable, B. Stewart, E. Demarjian, G. Chesborough, J. Hadfield. Fourth row: R. Marsden, K. Greene, K. Schultz, R. Barrett, N. Bartlett, K. Farmer.



The Canterbury Club at RICE is part of a nationwide organization for Episcopal students and all those interested in the Church's work.

The Club meets every second Friday of the month to hear speakers and several times a month for Bible Study with the Reverend Canon Samuel J. Wylie, our college chaplain.

This year the Club has helped with several service projects throughout the Episcopal Diocese of Rhode Island.



Left to right: E. Perry, Vice-Pres.; M. Jackson, Pres.; C. Venable, Pub. Ch.; N. Farmer, Sec.-Treas.



NEWMAN CLUB

Officers: J. Bourgeois, Vice-Pres.; C. Trigo, Sec.; J. Greene, Pres.; H. Guillotte, Treas.

NEWMAN CLUB

The Newman Club of RICE is an organization for Catholic Students and is affiliated with both the N. E. Province Association of Newman Clubs and the National Newman Club Federation. The purpose of the club is to unite Catholic students in furthering the religious work of the Church.

In addition to province and national meetings, local meetings are held twice a month on the second and fourth Tuesday which alternate between talks by the Club Chaplain, Reverend David J. Coffey, and addresses by guest speakers.

S P O R T S



"... He awakens sleeping spirits.
He quickens the indolent, encour-
ages the eager, steadies the un-
stable."



W.R.A.

Front, left to right: J. Dubois, E. Mackey, C. Hulcup, G. Bilodeau, P. Cavanaugh. Rear: M. Cardosi, M. Jackson, A. LeClaire, K. Mallatt, J. Hammerlund, C. Trigo.



Officers: G. Bilodeau, 1st Sem. Pres.; C. Hulcup, 2nd Sem. Vice-Pres.; E. Mackey, 1st Sem. Soc. Com. Ch.

WOMEN'S RECREATIONAL ACTIVITIES

Upon enrollment in the college, all women automatically become members of the Women's Recreational Activities. This organization is provided for those who wish to become more apt in physical ability or develop a sporting skill. The W.R.A. offers volleyball, basketball, bowling, swimming, badminton, tennis, golf, horseback riding, and bike hosteling. Capable instructors are on hand to teach technical skills involved in these sports. The social activities include the Phys Ed Feast, May Breakfast, Roller Skating, and Ice Skating Parties.



M.A.A. MEMBERS

Front, left to right: R. Hackett, J. Meynard, J. Lambert, A. DeAndreade. Rear: M. Fullam, J. Palmer, B. Winsor, R. Heslin, R. Anderson, R. Deneault, J. Aguiar.



Joe Renguin receives Soccer Award from Mr. Brown.

MEN'S ATHLETIC ASSOCIATION

All the men's athletic programs at the college are sponsored by the MAA under the direction of Professor Robert L. Brown. Inter-collegiate competition in basketball, soccer, and track are promoted, as well as, intra-mural sports events such as this year's game between the Freshmen and the Mis-Fits. Annual sports awards are presented to outstanding members at the Phys Ed Feast.



SOCCKER TEAM

Front, left to right: J. Todd, W. Crocker, John Veader, Captain; B. Berlam, J. Aguiar, D. Andrews, A. DeAndrade, Mr. Brown, Rear: F. Mitchell, A. Bergeron, A. Polowski, J. Bourgeois, R. Anderson, E. Maxwell, F. Peters, G. D'Amico, J. Judge, R. Sadlier, B. Glines, D. Brochu.





The R.I.C.E. soccer team fielded an inexperienced but aggressive group for the 1956 season. The team was captained this year by John Veader. John, probably one of the greatest goalies in the history of the New England Teachers College Conference, continued his excellent play and served as an inspiration to the other members of the team. Another senior standout was Ev Maxwell who played a rough and aggressive fullback position. Andy Polouski and Art Bergeron both gave fine performances on the R.I.C.E. line. Dick Brochu's fine soccer sense and speed at the halfback position was a key in the R.I.C.E. defense.

The juniors were well represented by Bob Berlam and Ray Anderson on the line and John Judge and Joe Renquin in the backfield. One of the outstanding performers of the season was Jim Whittaker whose long kick was the talk of the season.

Walt Crocker, Joe Aguiar, Frank Mitchell, and Al De Andrade gave youth and speed to the team and showed a bright future for R.I.C.E. soccer in the years to come.

Frank Peters, John Sadlier, Danny Andrews, George D'Amico, Jerry Bourgeois, Bill Glines, and Jerry Todd all gave depth to the team.

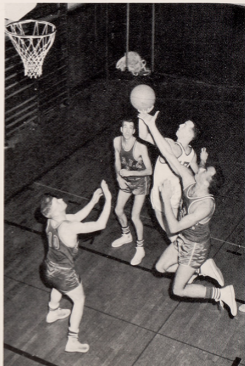
Scoring two victories and probably breaking the school record in ties, the team ended up in second place in the conference. Both of the victories were over Keene, but the two outstanding games were the 1-1 tie with Fitchburg and the 0-0 tie with Bridgewater, the league champs, in the last game of the season. The boys played as a unit all season and the team was one of which we could be proud.

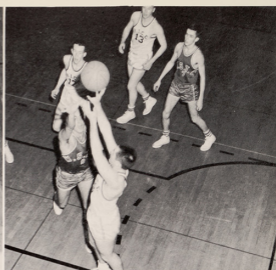




BASKETBALL TEAM

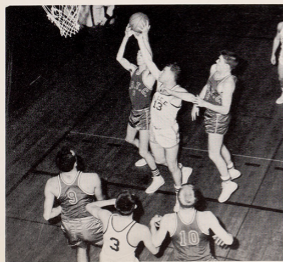
Front, left to right: R. Deneault, T. Drury, J. Veader, A. DeAndreade, D. Moore. Rear: Mr. Brown, E. Maxwell, D. Brochu, M. Fullam, F. Mitchell, R. Anderson, J. Bourgeois.





They took the last one! R.I.C.E. basketball team went victory-less until the last game of the season when they stunned Westfield Teachers 75-56. Lacking height and manpower, the team showed weaknesses in the early part of the season. However, in the games with Fitchburg and Westfield the team was defeated by the narrow margin of 2 points and 1 point respectively. Standouts on the team were Frank Mitchell, high scorer, Dave Moore and Ev Maxwell who did much of the rebounding, Al De Andrade, Roland Denault, and John Veader. Ray Anderson, Dick Brochu, and Joe Renquin provided the depth. John Veader and Ev Maxwell were co-captains.

Although still in defeat, the team started to show new spirit in its games with Bridgewater and Boston Teachers, and the victory over Westfield was the climax in the steady increase in team play and competitive spirit. Although showing a poor record, the boys deserve a great deal of credit against so many disadvantages.





**O
R
G
A
N
I
Z
A
T
I
O
N
S**



“... For the vast majority of men and women it has no promise of wealth or fame.”



Jean Mitson
Editor



Helen McGovern, Photo. Editor
John Palmer, School Photographer

Marsha McMichael, Art Editor



Evelyn Mackey, Business Manager

Joan Calise, Literary Editor



Elaine Kerttula,
Assoc. Ed.-Layout Ed.



Everett Maxwell, Sports Editor



Literary Staff, front: J. Calise, E.
Criscione. Rear: S. Crovitz, J. Vey-
era, C. Rosenberg.



Layout Staff S. O'Donnell, E. Kert-
tula, B. Tomei, R. Hartington.





HELICON STAFF

Front, left to right: J. Lavigne, H. Sipples, B. West, J. Burns. Rear: E. Gallogly, J. Meynard, J. Bray, R. Barrett, R. Heslin, R. Frappier, J. DeCota.



Harold Sipples, Editor; Barbara West, Ass't Editor.

The *Helicon* is the annual literary publication of RICE. It offers students samplings of the creative writing encouraged at the College, both in and outside the classroom. All students are eligible to submit manuscripts — poetry, fiction, essay, or drama — to the staff for consideration.

The editor, assistant editor, and the staff, consisting of at least two members from each class, select the contributions best in terms of literary achievement and variety. These are printed in the *Helicon*. The staff is assisted by two members of the faculty, Miss Thompson and Mrs. Priesser.



ANCHOR STAFF

Front, left to right: J. Burns, S. Laffan, P. Ucci. Rear: H. Harrington, G. Schooley, R. Lavigne, P. Kanarian, A. Corsair.

The shipload of school news, features and records of sports events is held fast by the *Anchor*, the monthly publication. For thirty years, the *Anchor* has continued its policy of reporting all matters of college interest. Published by the students, the newspaper serves as a means for the student body to express its opinions on every aspect of life at RICE.

The *Anchor* is an active member of several intercollegiate and teachers' press associations, and has received many first and second class ratings at the annual Columbia Scholastic Press Conference.



Shelia Laffan, Editor.

KAPPA DELTA PHI



Front, left to right: R. Vasee, R. Heslin.
Second row: J. O'Rourke, D. Moore,
B. Winsor, P. Gauthier.



Seated on floor, left to right: W.
Crocker, J. Levesque, A. DeAndreade.
Seated on couch: J. Blanco, D. Babbitt,
G. DiStephano. Rear: P. Kanarian, E.
DeMoranville, R. Anderson, T. Marino.



Kappa Delta Phi is a social fraternity to which men in the three upper classes are eligible for membership. This year's social activities included an open fall dance, the annual Invitation Banquet at which the pledges of the fraternity had the opportunity to meet and talk with some of the male professors; Dr. Gaige; our speaker, Father DeAngelis; and the regular upper class members of the fraternity. This banquet followed a very successful Indian theme three-degree pledge period. The annual Christmas Party for underprivileged children and St. Patrick's Day Dance were also held. This was followed by the National Convention held in Boston attended by the chapters throughout the East. This year showed an increase in membership and the financial standing of the fraternity.

Officers: B. Winsor, Nat'l Rep.; J.
Palmer, Treas.; R. Heslin, Pres.; I.
Williams, Sec.



CHOIR

Auditions are held at the beginning of each semester for students who are interested in joining the Choir. Two scheduled concerts — Christmas and Spring — are held each year under the direction of Miss McGuingle. The Choir members often perform at Chapel exercises and at informal college gatherings.





First Semester seated, left to right: S. McGurn, Dr. Loughrey, J. Repos, R. Tomasetti, M. Cardosi, C. Casey, Dean Mierzwa. Standing: P. Fasion, F. Peters, E. Mackey, R. Berlam, J. Judge, B. Tomei, E. Maxwell, N. Gervais, P. Smith, M. Welch.

STUDENT COUNCIL

Representatives of each class are elected to Student Council — the official organ of communication and co-operation between the administration and student body. Election to Council brings with it the responsibility of accurately reflecting the opinions and desires of the represented class. Each Council leaves behind it a record of successful solutions and suggestions to alleviate the difficulties of college administration.



Second Semester, front, left to right: C. Trigo, A. Bergeron, A. Carsair. Rear: J. Veader, F. Peters, E. Farrell, R. Heslin, B. Winsor, D. Babbitt.

HONORS



"... No one is more worthy to be enrolled in a democratic aristocracy ..."



KAPPA DELTA PI

Officers: D. Pinto, Treas.; I. Williams, Pres.; J. Daly, Vice-Pres.; N. DiPonte, Sec.



Front, left to right: J. Ruggieri, L. Terwilliger, B. Goselin, F. Barchi, D. Prete, M. Gardner, D. Oliver, J. Souza, B. Tomei. Rear: T. Paige, T. Nardi, D. Scanlon, M. Grey, L. Habercom, J. Greene, R. Heslin.



G. Bilodeau, V. Bradbury, E. Burke, A. Cornell, K. Greene, M. Kenny, H. Kerrins. Rear: P. Maynard, P. Leonard, M. Murphy, J. Lavalley, M. Ralph, S. Vallone, A. Noack, J. Walsh, R. Pinto.

KAPPA DELTA PI

The purpose of the honor society, Kappa Delta Pi, Epsilon Rho chapter, is to encourage high standards — professional, intellectual, and personal, to recognize outstanding contributions to education, and to honor achievement in educational work.

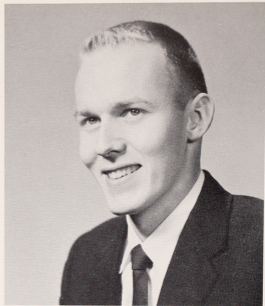
This year's theme concerns the rehabilitation of the child to a normal home life. In connection with this project, outstanding speakers were provided by such agencies as the Big Brothers and the Rhode Island Training School for Boys.



INITIATION CEREMONY



MARSHA McMICHAEL



BENJAMIN WINSOR

KAPPA AWARDS

A relatively new honor at the college is the annual Kappa Delta Phi Awards. The members of the men's fraternity elect a boy and girl, not previously honored at the college, who are also deserving of the highest praise. As for all other college honors, candidates are chosen for well-rounded interests and service.

Besides actively supporting class activities, Marsha has served as Social Committee Co-Chairman for the Seniors with the large task of planning for our Commencement Ball; and as May Day Committee Chairman.

Ben has been a representative of Student Council for several semesters, Business Manager for the soccer and basketball teams, and has been an active member of Kappa Delta Phi, the men's fraternity, serving as National Representative during his Senior year.



Front: C. Dufresne, B. Tomei.
Rear: E. Farrell, R. Heslin, J. Mitson.



Front: J. Greene, P. Faison.
Rear: I. Williams, E. Maxwell.

WHO'S WHO

One of the outstanding distinctions at RICE is to be chosen a member of WHO'S WHO AMONG STUDENTS IN AMERICAN COLLEGES AND UNIVERSITIES. This organization serves as a public acknowledgement of praiseworthy students by publishing their biographies in the annual publication and by offering an employment-reference service for the members. Members are elected during their Junior and Senior years by the Student Body on the basis of scholastic achievement, sociability, and service to the college.



FIRST SEMESTER — EVERETT MAXWELL



SECOND SEMESTER — ARTHUR BERGERON

STUDENT COUNCIL PRESIDENTS

Everett Maxwell was elected President of Student Council for the first semester by the Student Body. Max has served as Student Council representative during his Freshman year, as Sophomore Social Committee Chairman, and as President of the Men's Athletic Association as a Junior. He has played Basketball for four years, soccer for three years, and has also been a member of the track team. He is a member of *Who's Who*, and Sports Editor of the 1957 *Ricoled*. President of Student Council was a fitting climax to four years of active participation in college affairs.

Second semester President, Arthur Bergeron, is a well-known member of Council having been a representative since his Freshman year. Art has also been active in sports as a member of the soccer, basketball, and track teams. He served as Sports Editor of the *Anchor* for three semesters. Art has worked on innumerable Council committees and has organized many informal social gatherings. As Vice-President of Council during the first semester and as President last semester, Art has also received a fitting reward for his interest in and support of all college activities.

HAVE YOU SEEN THESE?

THESE?



AND THESE?



AND THESE?



ACKNOWLEDGEMENTS

With the completion of the 1957 *Ricoled*, comes the realization that it would not have been possible without the generous assistance of so many people. I wish to acknowledge with gratitude the co-operation, understanding, and advice of:

My assistant editors and their staffs who so graciously bore with me for a whole year.

Our adviser, Mr. Allison, the Administration, Faculty, and Student Body for their co-operation.

Mr. Ralph Millsbaugh of Loring's Studios and his photographers who covered all the college events.

Mr. Jack Brown of O'Toole and Sons who offered technical assistance and re-assurance when most needed.

Miss Jane Allaire, 1956 Editor of the *RICOLED*, who literally taught me the tricks of the trade and thus enabled us to get off to a good start in September.

Thank you one and all.

Jean Mitson
Editor, 1957

DIRECTORY

Class of 1957

Anderson, Margaret	38 Serrel Sweet Rd., Johnston
Azar, Lillian	228 Washington St., Central Falls
Barchi, Filomena (Mrs.)	26 Wisdom Ave., Providence
Barrett, Robert	638 Weeden St., Pawtucket
Belluche, Anne	138 Olney St., No. Providence
Bergeron, Arthur	2086 Mineral Spring Ave., No. Providence
Briggs, Florence	794 Washington St., Anthony
Booker, Frances	240 Bowden St., Pawtucket
Bradbury, Virginia (Mrs.)	41 Dewey Ave., Tiverton
Brochu, Richard	58 Haile St., Warren
Cahir, Maryann	60 Kelley Ave., Rumford
Calise, Joan	26 Homeland St., Johnston
Cassidy, Mary	173 Camp St., Providence
Cluley, Sylvia	53 Rand St., Central Falls
Collins, Joan	28 Geneva St., Providence
Correra, Theresa	148 Devonshire St., Providence
Cote, Lorraine (Mrs.)	R.F.D. #2, Woonsocket Hill Rd., Smithfield
Criscione, Elena	56 Mercy St., Providence
Crovitz, Sandra	130 Wentworth Ave., Edgewood
Cullinan, Mary	90 Pinehurst Ave., Providence
Dailey, Jane	37 Broadmoor Rd., Cranston
Daly, James	144 Massasoit Drive, Norwood
Davis, Shella	34 Tyndall Ave., Providence
DeCota, Joyce	128 Ontario St., Providence
Delasanta, Atila	357 Burnside Ave., Woonsocket
DiPonte, Natalie	525 Fruit Hill Ave., No. Providence
Dufresne, Claudette	201 Waterman Ave., Greystone
Ellingwood, Robert	1 Barry Rd., Apt. 28, Providence
Erickson, Vandelyn	103 Brown St., Pawtucket
Fairman, Jane	143 First St., Pawtucket
Faison, Patricia	95 Thomas Ave., Pawtucket
Farrell, Evelyn	94 Dale Ave., Cranston
Fisher, Lois	84 Finch Ave., Pawtucket
Fortune, Olive (Mrs.)	131 Sweet Fern Rd., Warwick
Frappier, Robert	33 Lincoln Ave., Providence
Gardner, Mary	18 Elm St., Westerly
Greene, Joyce	36 Fairview Ave., Pawtucket
Grey, Mary Jane	41 Heroux Blvd., Cumberland Hill
Grise, Georgette	68 Oakland Ave., Pawtucket
Gugel, Edwina	94 Middle St., Pawtucket
Hartington, Rita	11 Delmar Ave., Providence
Hayman, Joan	14 Paine Ave., Cranston
Hayman, Lois	164 Paine Ave., Cranston
Heaney, Patricia	288 Prospect St., Pawtucket
Herrera, Marguerite	278 Pontiac Ave., Cranston
Heslin, Richard	53 Denver Ave., Cranston
Humphrey, Judith	184 Wyndham Ave., Providence
Humphrey, Kathryn	123 Chapel St., Saylesville
Hoard, Helen	83 Fourth Ave., Woonsocket
Kelly, Cynthia	34 Harris Ave., Centredale
Kerthula, Elaine	120A Boswell Rd., Foster Center
Kiernan, Helen	268 Ausdale Rd., Cranston
Loomis, Maureen	126 Pond St., Pawtucket
Lossier, Ruth (Mrs.)	South County Trail, E. Greenwich
Mackey, Evelyn	34 Campbell Terrace, Pawtucket
Mantzariis, Rosaleen	198 Jewett St., Providence
Matrumalo, Marilyn	25 Brown Ave., Centredale
Maxwell, Everett	1180 No. Main St., Providence
McCarthy, Dolores	600 Blackstone Blvd., Providence
McGovern, Helen	Trim Acres, Situate
McGrath, Maureen	112 Lenox Ave., Providence
McMichael, Marsha	5 Blanche Ave., R.F.D. Manville
McNanna, Katherine	160 Oxford St., Providence

Mills, Mary	Box 235, Westerly
Mitson, Jean	164 Rochambeau Ave., Providence
Molloy, Ann	Scott Rd., Ashton
Moran, Mary	Chopmist Hill Rd., Chepachet
Morley, Peter	74 Lorimer Ave., Providence
Morrone, Sylvia	240 High St., Westerly
Motte, Joyce	38 Pelham Parkway, No. Providence
Mulleedy, Elaine	22 Dunford St., Providence
Murphy, Joan G.	156 Shaw Ave., Edgewood
Murphy, Joan H.	63 Albert Ave., Cranston
Murray, Louise	856 Hope St., Bristol
Nardi, Theresa	10 Tobey St., Providence
Nerrey, Sylvia	28 Meader St., Providence
Noack, Ann	182 Smithfield Rd., No. Providence
O'Donnell, Shelia	192 Hillside Ave., Pawtucket
Ogg, Nancy	43 Washington St., Warren
Oliver, Delphina	Allion St., Bristol
Peczha, Wanda	84 Chaplin St., Pawtucket
Perry, Elaine	53 Allen Ave., Cranston
Pinto, Douglas	661 Pine St., Central Falls
Polowski, Andrew	245 Eastwood Ave., Cranston
Poulin, Marie	46 Martha St., Pawtucket
Rao, Maria	298 Nelson St., Providence
Raymond, Irma (Mrs.)	70 Prospect Hill, W. Warwick
Ritzinger, Carol (Mrs.)	29 Carver St., Pawtucket
Rosenberg, Charlotte	118 Lafayette St., Pawtucket
Ruggieri, Joan	346 Webster Ave., Cranston
Salisbury, Ann	68 Pinehurst Ave., Pawtucket
Scardera, Carmela	55 Bainbridge Ave., Providence
Sears, Marie	49 Lyon Ave., E. Providence
Sepe, Alberta	15 Randall St., Cranston
Sheenan, Ann	639 Pleasant Valley Parkway, Providence
Sipples, Harold	86 Jackson St., Lakewood
Sission, Catherine	56 Russell Ave., E. Providence
Sorrentine, Margaret	126 Weeden Ave., Rumford
Souza, Claire	120 Main St., No. Tiverton
Souza, Joan	29 Fleming Ave., E. Providence
Taylor, Eleanor	11 Willow Way, Lincoln
Testa, Lois	108 Columbus Ave., Pawtucket
Tomew, Barbara	1811 Mineral Spring Ave., No. Providence
Trindade, Delfina	16 Tiffany St., Central Falls
Vallee, Edward	24 Lafayette Ave., W. Warwick
Vallee, Raymond	24 Lafayette Ave., W. Warwick
Varieur, Eunice	115 Second St., Pawtucket
Veader, John	20 Sharon St., E. Providence
Veyera, Jane	9 Merrill St., E. Providence
West, Barbara	30 South Main St., Pascoag
Williams, Irving	63 Friendship St., Newport
Winsor, Benjamin	12 Church St., Greenville

Class of 1958

Anderson, Raymond	47 Ferris Ave., Rumford
Art, Grian	19 Towanda Dr., No. Providence
Azar, Rose Marie	228 Washington St., Central Falls
Baker, Faith	76 Marcel St., Woonsocket
Barker, Joan	20 County St., Newport
Bartlett, Nancy	Whipple Ave., Oakland
Belanger, Aline	120 Brookside Ave., W. Warwick
Bellino, Anna	11 Betsy Williams Dr., Edgewood
Berlam, Robert	106 Harrison St., Pawtucket
Bilodeau, Georgette	35 Union St., Providence
Blanco, Joseph	276 Pleasant St., Pawtucket
Brady, Gail	58 Andem St., Providence
Burke, Elizabeth	26 Hillcrest Ave., Pawtucket
Cahalan, Michael	191 Webster St., Pawtucket
Cahir, Janice	45 Raymond St., Providence
Calderiso, Ann	45 Bay View Ave., Bristol

Capron, Carolyn	Box 63, Chepachet
Cardosi, Mary	46 Windsor Rd., Pawtucket
Casey, Carole	Round Hill Rd., No. Smithfield
Censorio, Alfredo	129 Hendrick St., Providence
Charette, Kathleen	Wallum Lake
Cherns, Norma	23 Ralph St., Lakewood
Choiniere, Helen	69 Wood Ave., Westerly
Coderre, Pauline	121 Rebekah St., Woonsocket
Colby, Beverly	21 Merrick St., Pawtucket
Connor, William	2 Ryan Ave., Ashton
Cornell, Ann	1220 Hope St., Bristol
Croghan, Barbara	17 Cathedral Ave., Providence
Crowther, David	640 Thomas St., Newport
Curtin, George	69 Adelaide Ave., Providence
Dalton, Patricia	579 Gaskills St., Woonsocket
DeConcilis, Gloria	20 Metcalf St., No. Providence
Demarjian, Elaine	125 Arnold St., Woonsocket
Demarjian, Eleanor	125 Arnold St., Woonsocket
DePari, Jane	283 Mount Pleasant Ave., Providence
Dodd, Judith	9 Florence St., Riverside
Donahue, Gerald	25 Lookout Ave., No. Providence
Douglas, Richard	88 Comstock Ave., Providence
Drainville, Claire	502 No. Main St., Pascoag
Draper, Robert	14 Womanbam Lane, Diamond Hill
Dubois, Jacquelyn	232 Ballou St., Woonsocket
Ducharme, Jacqueline	53 No. Main St., Pascoag
Dufresne, Marguerite	155 Reynolds Ave., Providence
Dunphy, Catherine	11 First Ave., E. Greenwich
Driedzic, Carolyn	1 Hawkins Blvd., No. Providence
Ellis, Marcella	225 Morris Ave., Providence
Farmer, Nancy	55 Atlantic Ave., Providence
Flynn, Patricia	1 Mathew St., Providence
Gaucher, Leonard	103 Waterman Ave., Providence
Gillis, Mary	171 Narragansett Ave., Providence
Glod, Elizabeth	35 Fifth Ave., Woonsocket
Glowicz, Walter	101 Carter Ave., Providence
Goff, Ann-Carol	77 Blackmore Ave., Cranston
Goselin, Elizabeth	226 Plainfield St., Johnston
Greene, Carole	81 Hamlet Ave., Woonsocket
Greene, Catherine	53 Prospect St., E. Greenwich
Hanley, Joanne	264 Fair St., Warwick
Hensault, Louisa	30 Granite St., W. Warwick
Holihen, Elizabeth	30 Dartmouth Ave., Riverside
Hope, Evelyn (Mrs.)	Chopmist Hill Rd., Chepachet
Hopkins, Alta	No. Scituate
Humpal, Joyce (Mrs.)	Wilson Ave., Pascoag
Jackson, Marjorie	22 Pelham Pkwy., No. Providence
Judge, John	120 Ophelia St., Providence
Kacynski, Anna	17 Sayles Ave., Pascoag
Kalinowski, Joseph, Jr.	28 New Haven Ave., Central Falls
Kenny, Maureen	22 Waterman Ave., Cranston
Kerrins, Helen	75 Dean Ave., Centredale
Labucki, Dorothy	32 Fredrick St., Providence
Lavallee, Jacqueline	37 Lennon St., Providence
Lavallee, Roberts	40 Parker St., W. Warwick
Leonard, Priscilla	53 Brook St., W. Barrington
Lesperance, Elizabeth	47 Herbert St., W. Warwick
Littlefield, Claudia	71 Medway St., Providence
Lough, Nancy	142 Fifth St., Providence
Mageau, Francis	Centennial St., Pascoag
Magee, Carole	45 Halle St., Warren
Makopian, Michael	43 Bennon St., Providence
Makowski, Frances (Mrs.)	Eagle Peak Rd., Pascoag
Mallatt, Katrina	36 Bellevue Ave., Woonsocket
Malloy, Frances	Scott Rd., Ashton
Mangione, Victoria	58 Park Ave., Edgewood
Marques, Herminia	25 Meeting St., Valley Falls
Maynard, Maureen	25 Armington Ave., E. Providence
McAteer, Joan	244 Gordon Ave., Providence
McCaffrey, Marilyn	123 Mayfair Rd., Warwick
McDermott, Ann	33 Barber Ave., Coventry

McCaughey, Gail	217 Front St., Lonsdale
McDole, Phyllis	155 First St., Providence
McGrane, John	312 Walcott St., Pawtucket
McGwinn, Joan	129 Ontario St., Providence
McPoland, Marion	7 Bull St., Newport
McVicker, Marcia	76 Pemberton St., Providence
Medrecht, Marilyn	158 Cypress St., Providence
Nickelson, Ralph	257 Hughes Ave., Pawtucket
Moffat, Eric	77 Vandewater St., Providence
Morrison, Maureen	24 Wealth Ave., Providence
Mullin, Jane	4 Pond St., Pawtucket
Murphy, Mary	69 Arnold St., Providence
Nelson, Jacqueline	160 Blaisdell St., Cranston
O'Connell, Lois	147 Meadow St., Pawtucket
O'Connell, Raymond	98 Arnold St., Providence
O'Rourke, Maureen	12 Gooding St., Pawtucket
Ousley, Nancy	156 Ballston Ave., Pawtucket
Pacheco, Dolores	10 Westly St., W. Warwick
Pacheco, Millicent	144 Mauran Ave., E. Providence
Paige, Timothy	205 Second Ave., Woonsocket
Palmer, John	71 Legion Way, Cranston
Pantalone, Gerald	234 Central St., Central Falls
Parrillo, Angela	1601 Cranston St., Cranston
Patnaude, Barbara	114 Kentland Ave., No. Providence
Payne, Raymond	79 Linwood Ave., Providence
Pease, Miriam	106 Baxter St., Pawtucket
Perry, Emily	996 Hope St., Bristol
Peterson, Mary-Jean	780 Main St., Warren
Petrone, Marguerite	56 Marion Ave., Edgewood
Pettine, Stephen	183 Benefit St., Providence
Pinto, Rachel	23 Slemom Lane, Central Falls
Prete, Dolores	15 Campbell Ave., No. Providence
Quigley, Robert	80 Palham St., Newport
Quinn, Sara	4 Roanoke St., Providence
Raymond, Joan	225 Cowden St., Central Falls
Reis, Shirley	3 Jenks Ave., Central Falls
Renquin, Joseph	80 Clyde St., Pawtucket
Reynolds, Lois	23 Boutinell St., Pawtucket
Ricciardi, Arlene	763 Moorland Ave., Edgewood
Riley, Jane	156 Central Ave., E. Providence
Risso, Mary	52 Center Ave., Middletown
Rocha, Evelyn	67 Martello St., E. Providence
Roderick, Elizabeth	124 Gibbs Ave., Newport
Rogers, Carol	95 Woonsocket Hill Rd., Woonsocket
Rouse, Patricia	94 Mayfair Rd., Warwick
Rowse, George	85 Robinson Ave., Pawtucket
Russo, Ann	320 Mount Pleasant Ave., Providence
Sadlier, John	32 Sherry St., Providence
Scanlon, Dorothy	19 Centennial St., Pascoag
Silva, Maunuel	31 Pike St., W. Warwick
Simskie, John	117 Dexter St., Valley Falls
Smith, Carol	Danielson Pike, No. Scituate
Smith, Elizabeth	18 Wood St., Warren
Sondler, Joan	56 Dexterdale Rd., Providence
Swanson, Patricia	17 Surf Drive, Bristol
Sylvestre, Arline	81 Waverly St., Providence
Taber, Beverly	18 Crest Rd., No. Smithfield
Taylor, Leonora	108 Hawksley Ave., R.F.D., Apponaug
Terwilliger, Louise	91 Abbey Ave., Gaspee Plateau
Toohy, Patricia	22 Berlin St., Providence
Travers, Joseph	169 High St., Bristol
Trigo, Carmelita	585 Providence St., Warwick
Welch, Mary	68 Read Ave., Saylesville
West, Rae	202 Alabama Ave., Providence
Whipple, Gayle	18 Spentone Rd., Cranston
Whitaker, James	648 Lincoln St., Seekonk, Mass.
Whitehead, Georgia	228 Brightridge Ave., E. Providence
Wilder, Priscilla	166 Waterman Ave., E. Providence
Wildpret, Patricia	22 Hartford Place, Warwick
Wolloy, Frances	Scott Rd., Ashton
Woratch, Beverly	22 Leonard St., R.F.D., Mansville

Class of 1959

- Babbitt, Donald	55 Forbes St., Riverside
Baker, Faith	76 St. Marcel St., Woonsocket
Barnes, Marian	Long Highway, Little Compton
Bernier, Gerard	74 Park Place, Pawtucket
Bourgeois, Gerald	177 Sayles Ave., Pawtucket
Boyd, Mary	171 Bloomfield St., Pawtucket
Boylan, Anne Mary	15 Pine St., Pascoag
Brady, Claire	144 Cottage St., Pawtucket
Brady, Margaret	56 Elmwood Dr., Warwick
Brazell, Marguerite	237 Hartford Ave., Providence
Briggs, Alice	70 Brightside Ave., Conimicut
Briggs, Jean	490 Fruit Hill Ave., No. Providence
Burns, Joanne	302 Waldo St., Providence
Cahill, Anne	105 Bradley St., Providence
Canis, Mary Ann	45 Carlson Dr., Lonsdale
-Caranci, Joseph	17 Atlantic Ave., No. Providence
Carey, Janet	10 Factory St., W. Warwick
Carmody, Winifred	18 Sidney St., W. Warwick
Carter, Carolyn	60 Melrose St., Cranston
Casey William	60 Robin St., Providence
Cavanaugh, Margaret	88 Freeborn Ave., E. Providence
Cherms, Constance	17 Congress St., Warwick
Conlon, Harold	176 Dexter St., Valley Falls
Corsair, Alice	12 Ninth St., Providence
- Crocker, Beverly	603 Broad St., Providence
? - Crocker, Walter	40 Burnside Ave., Riverside
Davis, Edith	16 Grafton St., Saylesville
Day, Hope	269 Point St., Providence
- D'Amico, George	31 Bailey St., Cranston
- DeAndrade, Al	37 Lewis St., Central Falls
Deneault, Roland	39 Sumner Ave., Central Falls
Dickervitz, Richard	98 Hazel St., Saylesville
DiStephano, Gene	229 Woonasquatucket Ave., No. Providence
DiStephano, Lois	35 Intervale Ave., No. Providence
Dooley, Joan	37 Dalton St., Rumford
Downes, Myra	Post Road, Westerly
Doyle, Joanna	71 Keene St., Providence
Dufault, Marilyn	22 Bradley St., Pawtucket
Eccleston, Gayle	139 High St., Westerly
Emerzian, Virginia	43 Longwood Ave., Providence
Ethier, Mary	121 Ridge Rd., Georgiaville
Fanning, Judith	260 High St., Valley Falls
Feeley, Ann	127 Betsy Williams Dr., Edgewood
Firth, Ann	199 Carter St., Pawtucket
Fontaine, Doris	193 Wendell St., Providence
Freeman, Walter	3 Regent Ave., Providence
Fuoco, Joseph	33 Tiffany St., Cranston
Gallogly, Eleanor	230 Vermont Ave., Providence
Gallup, Sabra	7 Matteson Ave., W. Warwick
Garvin, Emily	633 Wood St., Bristol
Gauthier, Paul	23 Charles St., Pawtucket
Gervais, Neil	Box 186, Mapleville
Gilmartin, Mary	77 Edgewood Ave., Edgewood
Gontarsli, Nora	79 Rosemont Ave., Pawtucket
Goucher, Roberta	Louisquisset Pike, Lincoln
- Guillotte, Henry	20 Main Rd., No. Tiverton
Hackett, Robert	138 Woodward Rd., Providence
Hadfield, June	895 Hope St., Bristol
Hammarlund, Judith	94 Crown Ave., Riverside
Harrington, Helen	419 Armistice Blvd., Pawtucket
Harrington, Evelyn	11 Delmar Ave., Providence
Hewitt, Barbara	575 Fair St., Warwick
Heywood, Cynthia	West Main Rd., Little Compton
Higgins, Paula	184 Calaman Rd., Cranston
Hobson, Ann Marie	114 Radcliffe Ave., Providence
Holgate, Carol	47 Grotto Ave., Pawtucket
Hulcup, Carol	37 Beech St., Pawtucket

Jakobiak, Stanley	22 Lookout Ave., No. Providence
James, Donald	51 Third St., Newport
Jarosz, Theodore	234 Commonwealth Ave., Attleboro Falls
Johnson, Joanne	58 Benbridge Ave., Lakewood
Joseph, Roberta	30 Horton St., Providence
Kanarian, Peter	193 Sabin St., Pawtucket
Kenney, Bernard	280 Bay View Ave., Edgewood
Kenney, Katherine	43 Lyndhurst Ave., Providence
Kenyon, Claire	Baily Hill Rd., Wyoming
Laffan, Sheila	878 Mendon Rd., Woonsocket
Layfield, William	309 Manton Ave., Providence
LeClaire, Anita	153 Hoppin St., E. Providence
Lombardy, Mary	203 Water St., Warren
MacDonald, Dawn	East Greenwich Ave., W. Warwick
Magill, Margaret	2 Armistice Blvd., Pawtucket
Maloney, Roberta	270 Hillside St., Pawtucket
Marino, Carol	58 Newark Ave., Providence
Marino, Anthony	53 Winthrop Ave., Providence
Marsden, Ruth	130 Eastwood Ave., Providence
Maynard, Marianne	164 Lafayette St., Pawtucket
McAlear, Elizabeth	23 Stansbury St., Providence
McDonald, Ann	225 Carleton St., Providence
McCormick, Joseph	30 Harvard Ave., Providence
McHugh, Maureen	66 Goddard St., Providence
McMillan, Audrey	7 Nicol Terrace, Newport
McPhillips, Joan	58 Belmont Ave., Providence
McVay, Patricia	100 Brewster St., Pawtucket
Mitchell, Frank	112 Cross St., Central Falls
Moloney, Elinore	31 Reed St., Tiverton
Moore, David	128 School St., Central Falls
Murphy, Anne	106 Sumter St., Providence
Newton, Nancy	Walcott Ave., Newport
Norton, Lillian	
Oberg, Ruth	150 Parkside Ave., Pawtucket
O'Loughlin, Madelyn	1221 Chalkstone Ave., Providence
Orsini, David	204 Thurbers Ave., Providence
Paine, Nancy	14 Beach Rd., Cumberland
Palmiscione, Corinne	53 Greeley St., Providence
Paperelli, Jo Ann	23 Sutton Place, Cranston
Parker, Merlyn	174 Wingate Ave., Warwick
Peczka, Alice	84 Chaplin St., Pawtucket
Peloquin, Feora	33 Houtmann Ave., Cumberland
Petsching, Alan	
Pezzullo, Janice	42 Scenic Dr., Oaklawn
Plante, Robert	209 Old Country Rd., Georgiaville
Prata, Janet	29 Oak St., Providence
Purcell, Barbara	64 Greenwood Rd., E. Providence
Quinn, Nancy	180 Lonsdowne Rd., Warwick
Quirk, Maureen	24 Stadden St., Providence
Rao, Frieda	174 Courtland St., Providence
Reilly, Hope	39 Langham Rd., Providence
Richard, Laura	31 Stanford Ave., Providence
Rocha, Thelma	67 Martello St., E. Providence
Rossi, Gloria	47 Stevens Rd., Cranston
Schifino, Anne	76 Lyon Ave., E. Providence
Sgambato, Marion	23 Mowry Ave., Granterville
Smith, Elizabeth	27 Spruce St., Westerly
Smith, Patricia	2143 Elmwood Ave., Norwood
Shunney, Ann	
Shunney, Mary	
Spas, Avis	239 Bailey St., W. Warwick
Spencer, Ellen	14 Summit St., Warwick
Staknis, John	33 Salmon St., Providence
Surowiec, Irene	31 Primrose St., Pawtucket
Stewart, Barbara	265 Maple Ave., Forestdale
Swanson, Barbara	984 Providence St., W. Warwick
Thomas, Russell	
Thompson, Margaret	74 Walnut Rd., W. Barrington
Thompson, Sheila	25 Dartmouth Ave., Riverside
Todd, Gerald	3151 W. Shore Rd., Warwick

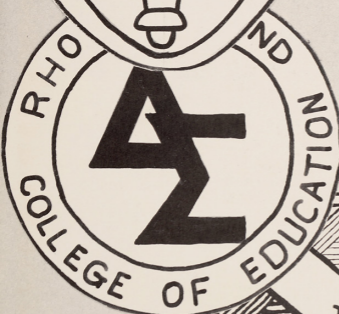
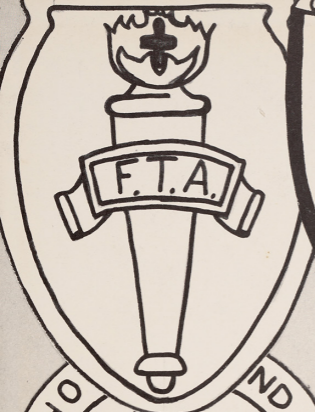
Trainor, Marklyn	26 Summer St., Bristol
Treanor, Ann	74 Mulberry St., Pawtucket
Trombetta, Joseph	804 Admiral St., Providence
Trombi, Mary (Mrs.)	Arrowhead Rd., Coventry
Trump, Dorothy	270 Providence St., W. Warwick
Ucci, Pauline	4 Pemberton St., Providence
Vallley, Rose	24 Harvest St., Providence
Vanable, Carolyn	182 Academy Ave., Providence
Vitale, Corina	41 Seventh Ave., Woonsocket
Wade, Janice	21 Walnut St., Newport
Weed, Ralph	16 Norwich Ave., Providence
Weeple, Patricia	
Wilson, Diane	56 Moore St., Providence
Wuerker, Joan	118 Lorimer Ave., Providence
Wuraffic, Meryl	24 Crowninshield St., Providence
Zoglio, Carolyn	

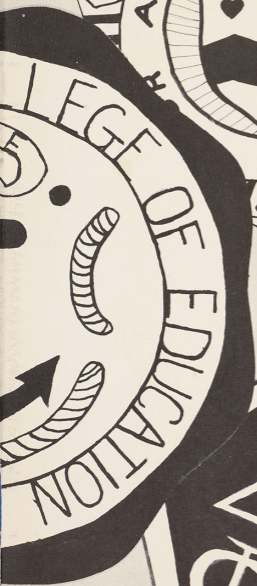
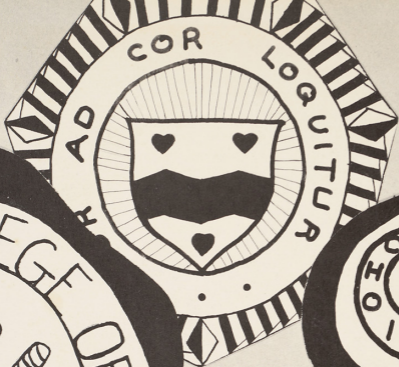
Class of 1960

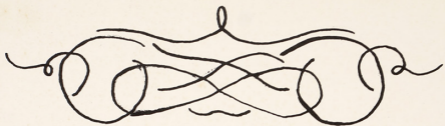
Abbenante, Marsha	390 Wellington Ave., Cranston
Aguiar, Joseph	594 Wood St., Bristol
Alviti, Natalie	130 Eldridge St., Cranston
Anderson, Elinor	85 Oakdale Ave., Pawtucket
Andrews, Daniel	19 Tenth St., E. Providence
Amy, Sharon	14 Fifth St., Providence
Arvidson, Carol	41 Ardoene St., Providence
August, Elizabeth	33 Briar Ave., Riverside
Baker, Nancy	213 Occupasstuxet Rd., Warwick
Bergamian, Lucy	468 Smithfield Rd., No. Providence
Barry, Anne	27 Bradford Ct., W. Warwick
Behan, Virginia	28 Mawney St., Providence
Best, Mary	44 West Main Rd., Portsmouth
Bloomfield, Fredda	10 Brookside Dr., Cranston
Boucher, Diane	152 Hopkins Ave., Johnston
Boudreau, Alexander	208 Sweet Ave., Pawtucket
Bray, John	187 East Ave., Pawtucket
Brown, Ann Marie	206 Sumter St., Providence
Brown, Judy	97 Raymond St., Providence
Camara, Brenda	50 Haile St., Warren
Capron, Susan	Putnam Pike, Chepachet
Capuano, Evelyn	45 Lawnacre Dr., Cranston
Caranci, Dolores	12 Atlantic Ave., No. Providence
Casey, Maureen	Pound Hill Rd., No. Smithfield
Chastbrough, Gail	61 Urrico Ave., Woonsocket
Clabby, Melissa	241 Ohio Ave., Providence
Clark, Virginia	25 Newfield Ave., Lakeswood
Clarke, Grace	86 Mason Ave., Portsmouth
Cohen, Bernice	33 Taft Ave., Providence
Cordin, Betty	34 Carter St., Providence
Corp, Carol	48 Knollwood Ave., Cranston
Costa, Richard	14 South Brookside Ave., Centerdale
Costantino, Ruth	45 Seneca Ave., Pawtucket
Coughlin, Margaret	118 Francis Ave., Pawtucket
Coughlin, Patricia	151 Pender Ave., Warwick
Creta, Raymond	185 Ottawa Ave., Warwick
Croce, Geraldine	9 Christopher St., Providence
Cullinane, Catherine	228 Pleasant St., Providence
D'Amico, Peter	27 Lee Ave., Newport
Davis, Gail	58 Lester St., Providence
DeLuca, George	996 Branch Ave., Providence
DePace, Joanne	81 Land Pond Rd., Norwood
Destremps, Richard	46 Golden Hill St., Newport
Devaney, Catherine	26 Carlisle St., Providence
Diamond, Harriet	77 Harriet St., Providence
DiCola, Delia	508 Woodward Rd., No. Providence
Drury, Thomas	295 River Ave., Providence
Duhamel, Madeleine	18 Bauvier Ave., Manville
Dyer, Helen	145 Colfax St., Providence

Eastham, Thomas	36 Steere Ave., Centerdale
Eastwood, Paul	19 Hawley St., Centerdale
Egan, Michael	48 Parker St., Central Falls
Fairhurst, Susan	2 Sherwood Pl., Johnston
Farmer, Karen	55 Atlantic Ave., Providence
Fay, Patricia	15 Westwood Rd., Saylesville
Fenton, Norman	265 Webster Ave., Providence
Flynn, John	16 Batcheller Ave., Cranston
Fogarty, Eileen	81 Deborah Rd., Warwick
Foley, Mary Lou	44 Stillman Ave., Pawtucket
Fontes, Jacquelyn	167 Brightridge Ave., E. Providence
Fox, Earl	39 Main St., Oakland
Franchillo, John	712 Atwells Ave., Providence
Frattarelli, Irene	276 Power Rd., Pawtucket
Fullam, Mark	365 Broadway, Providence
Gaucher, Martha	Harrisville
Gilroy, Carol	60 Riverfarm Rd., Cranston
Grady, Marilyn	2426 Cranston St., Cranston
Green, Roberta	1021 Smithfield Ave., Saylesville
Guay, Elizabeth	118 Parnell St., Providence
Gubala, Barbara	14 Empire St., Pawtucket
Gurnick, Stanley	40 Reynolds Ave., Providence
Harrison, William	76 Newfield Ave., Lakewood
Hart, Marcella	37 Seventh St., Providence
Hart, Marilyn	101 Lynch St., Providence
Hartley, Marion	98 Agonn Ave., Warwick
Healey, John	18 Alton St., Providence
Heeder, Charles	74 Berkley St., Providence
Heslin, Dorothy	413 Long St., Warwick
Higgon, MaryAnn	15 Mifflon Ave., Edgewood
Horan, Claire	R. I. Training School for Boys, Howard
Hughes, Paula	1086 Smith St., Providence
Hughes, Brenda	23 Hawthorne Ave., Eden Park
Jordan, Barbara	34 Providence St., W. Warwick
Kaloostian, Mary-Ellen	75 Sorrento St., Providence
Kearns, Helen	404 River Ave., Providence
Keenan, Patricia	43 Auburn St., Pawtucket
Kelly, Edward	125 Perrin Ave., Pawtucket
Kennedy, Pat	81 Kenyon Ave., E. Greenwich
Kofahl, Norma	11 Bluff St., Riverside
Lachapelle, Jacqueline	55 Harding St., W. Warwick
Lambert, Joseph	Pine Ave., Coventry
Langton, Patricia	14 Brewster St., Providence
Letendre, Carol	Pascoag
Louth, Jeanne	48 Riverfarm Rd., Cranston
Lowy, Hedy	47 Salmon St., Providence
Lussier, Jacqueline	11 Anstis St., Cranston
Maginn, Ann	41 Lennon St., Providence
Malley, Marjorie	150 Washington Ave., Providence
Marine, Carol	58 Newark St., Providence
Martineau, Carol	4 Arcade St., Johnston
Masi, David	65 American St., Providence
Menard, Joseph	84 Charlton Ave., Pawtucket
Merette, Roberta	43 Crestwood Rd., Cranston
Michael, Richard	64 Dean St., Providence
Micone, Patricia	160 Vinton St., Providence
Mirarchi, Helen	83 Harold St., Providence
Molloy, Miriam	174 Sinclair Ave., Providence
Monaghan, Mary Ann	697 East Ave., Pawtucket
Mooradian, Moorad	61 Douglas Ave., Providence
Morally, Helen	6 Wauregan Dr., W. Warwick
Moreau, Ellen	224 Park Holm, Newport
Mulligan, Judith	88 Englewood Ave., Pawtucket
Munson, Marjorie	116 Mill Cove Rd., Warwick
Murphy, Jane	50 Quincy St., Providence
McCabe, Mary Paula	176 Jastram St., Providence
McConnell, Patricia	156 Cypress St., Providence
McDonald, Diane	493 Pleasant Valley Pkwy., Providence
McFarland, Mary	22 Grant Ave., Cranston

McGurn, Sally 110 Mulberry St., Pawtucket
 McLaughlin, Abigail 69 Marberry Ave., Pawtucket
 McMahon, Elaine 4 Lowe Ave., Warwick
 Neary, Eleanor 30 Granger Court, Warwick
 Nelson, Donna 269 Central Ave., E. Providence
 Nicholson, Virginia 183 Assembly Dr., Warwick
 Norris, Joan 30 Squantum Dr., Warwick
 Olson, Kenneth 103 Florin St., Warwick
 O'Brien, Brenda 121 Courtney Ave., Pawtucket
 O'Neill, Madeline 129 Pine St., Pawtucket
 Ouillette, Joanne 168 Balch St., Pawtucket
 Pagano, Santine 7 Roma St., Bristol
 Parkinson, Janice 106 Oakdale Ave., Pawtucket
 Pascale, Anita 171 Cumberland St., Providence
 Pasch, Patricia Log Rd., R.F.D. #3, Esmond
 Peacock, William 53 Central Ave., Seekonk, Mass.
 Peters, Franklin 56 Fourth St., E. Providence
 Petisce, Marcella 11 Lincoln Ave., No. Providence
 Phillips, Schuyler 67 Maple St., Coventry
 Pinsonneault, Joan Stillwater Rd., Georgeville
 Pitocchelli, Louise 39 Zella St., Providence
 Polofsky, Wilma 34 Pennsylvania Ave., Providence
 Powers, Ruth 5 Geldard St., Valley Falls
 Proulx, Joan 19 Whitford Ave., Pawtucket
 Quinn, Jane 4 Roanoke St., Providence
 Quinn, Martha 181 Hedley Ave., Central Falls
 Records, Robert 131 California Ave., Providence
 Repos, Joanne 35 East Knowlton St., Riverside
 Robitaille, Patricia 137 Arnold St., Woonsocket
 Rodgers, John 56 Ivy St., Providence
 Ruthkiewicz, Anne 341 Metacom Ave., Warren
 Ryan, Eileen 9 Plantation St., Greenwood
 Ryan, Louise 36 Jefferson Ave., Pawtucket
 Santilli, Marie 797 Providence St., W. Warwick
 Sanzen, Judith 59 Berkley St., Cranston
 Saunders, Judith Post Road, Westerly
 Schooley, Gerald 24 Bellevue Ave., Providence
 Schultz, Kaaren 10 Becher Ave., Riverside
 Silvestri, Anna 26 Kimball St., Providence
 Slater, Edward 64 S. Atlantic Ave., Warwick
 Smith, Joan 24 East Earle St., Lonsdale
 Smith, Rosella 45 Ocean St., Providence
 Smith, Shirley 76 Colonial Ave., Warwick
 Smith, Sandra 127 Mitchell St., Providence
 Solkoff, Carole 20 Forest St., Providence
 Spacagna, Zelinda 52 Forbes St., Providence
 Stanton, Margaret 10 Oneida St., Pawtucket
 Steiner, Gerry 1184 Smith St., Providence
 Sweeney, Thomas 30 Kelley St., Providence
 Talbot, Cynthia 1589 Main St., W. Warwick
 Taraborelli, Alfred 6 Leading St., Johnston
 Taylor, Mary Alice 156 Wendell St., Providence
 Thompson, Kathryn Ashway
 Tomasetti, Roberta 27 Woodbury St., Warwick
 Turbitt, Janet 56 Goff St., Rumford
 Vanni, Joseph 13 Kepler St., Providence
 Venagro, Ann 39 Clematis St., Providence
 Walsh, Carol Mendon Rd., Cumberland Hill
 Welch, Dorothy 169 Narragansett Ave., Providence
 Wilkening, Brenda 15 Lorimer Ave., Providence
 Wilkinson, John 265 West Ave., Pawtucket
 Wolslegel, Barbara 265 Groveland Ave., Warwick







The Class of 1957 presents

THE RICOLED





RHODE ISLAND COLLEGE OF EDUCATION

PROVIDENCE

RHODE ISLAND

