



# RICOLED

1958

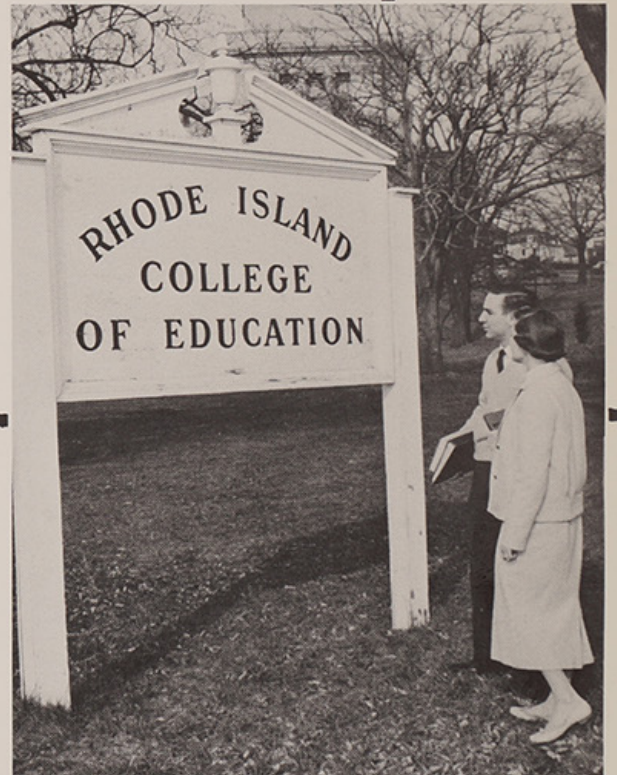






1958

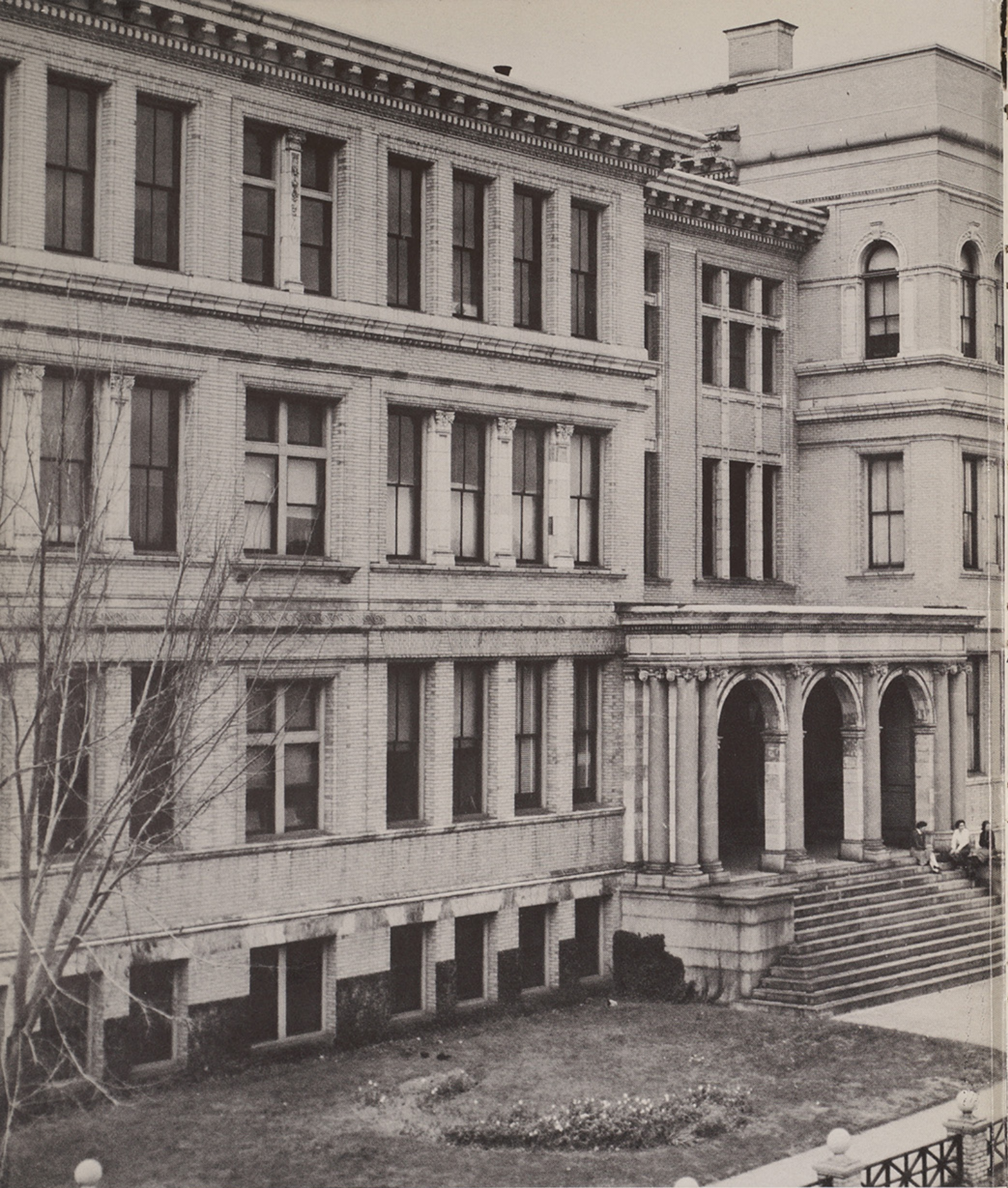
RICOLED



Providence

Rhode Island









## DEDICATION

*We, the Class of 1958, dedicate our RICOLED to the college building, symbolic of teacher education in Rhode Island. It is our sincere hope that the traditions of the college and the spirit of the students, past and present, will be carried on to the new campus.*



# TABLE OF CONTENTS



Administration  
and  
Faculty ..... 9



People and Places ..... 27



Seniors ..... 41





Undergraduates ..... 73



Clubs  
and  
Organizations ..... 87

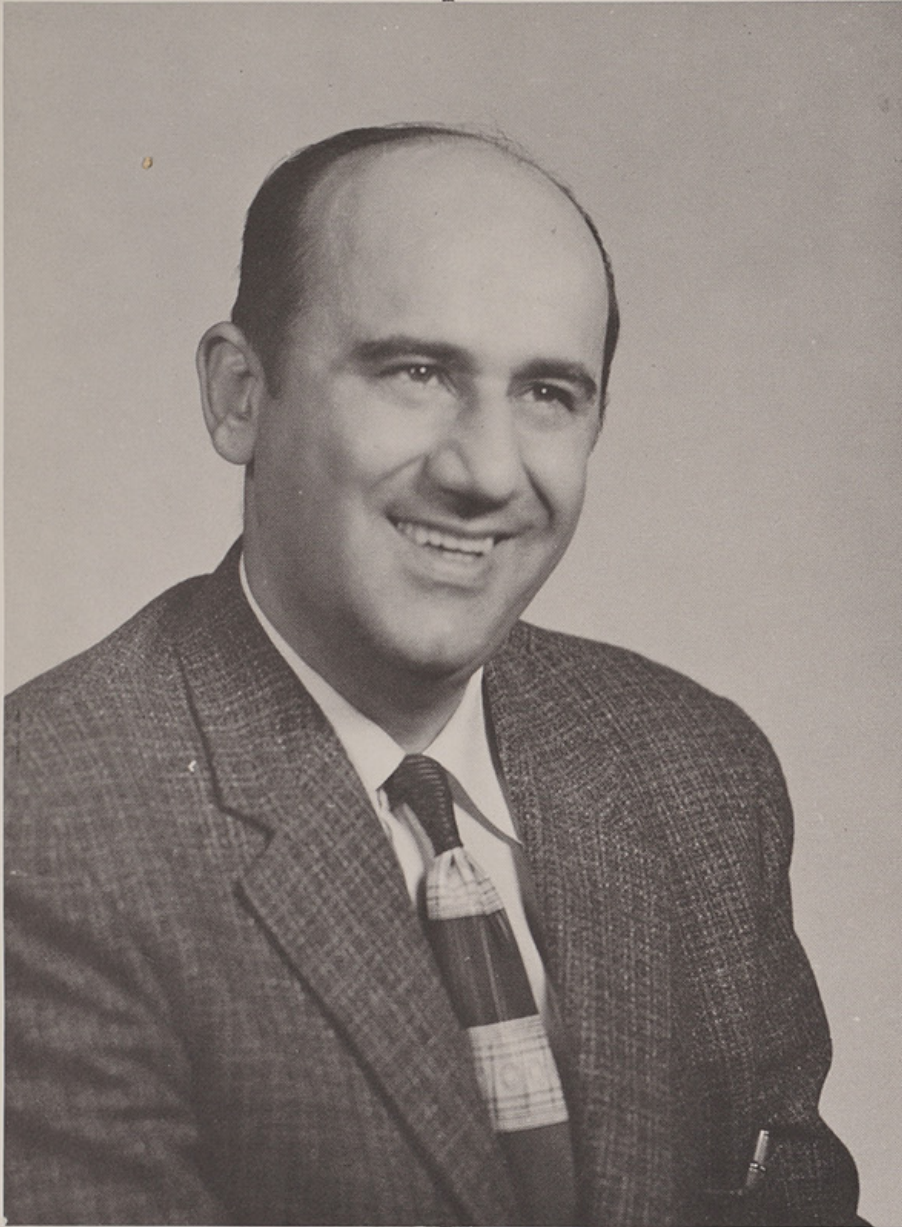


Sports ..... 113



Activities ..... 123





MR. CHRISTOPHER M.  
MITCHELL

We will all miss his cheery smile and the spirit of helpfulness which endeared him to the faculty and students alike.



# IN MEMORIAM

*We pray that they have already come  
into that glory for which we yet strive.*

## DR. MARY M. LEE

Her unselfish devotion to the cause of education and to the Christian principles for which she strove will long be remembered.





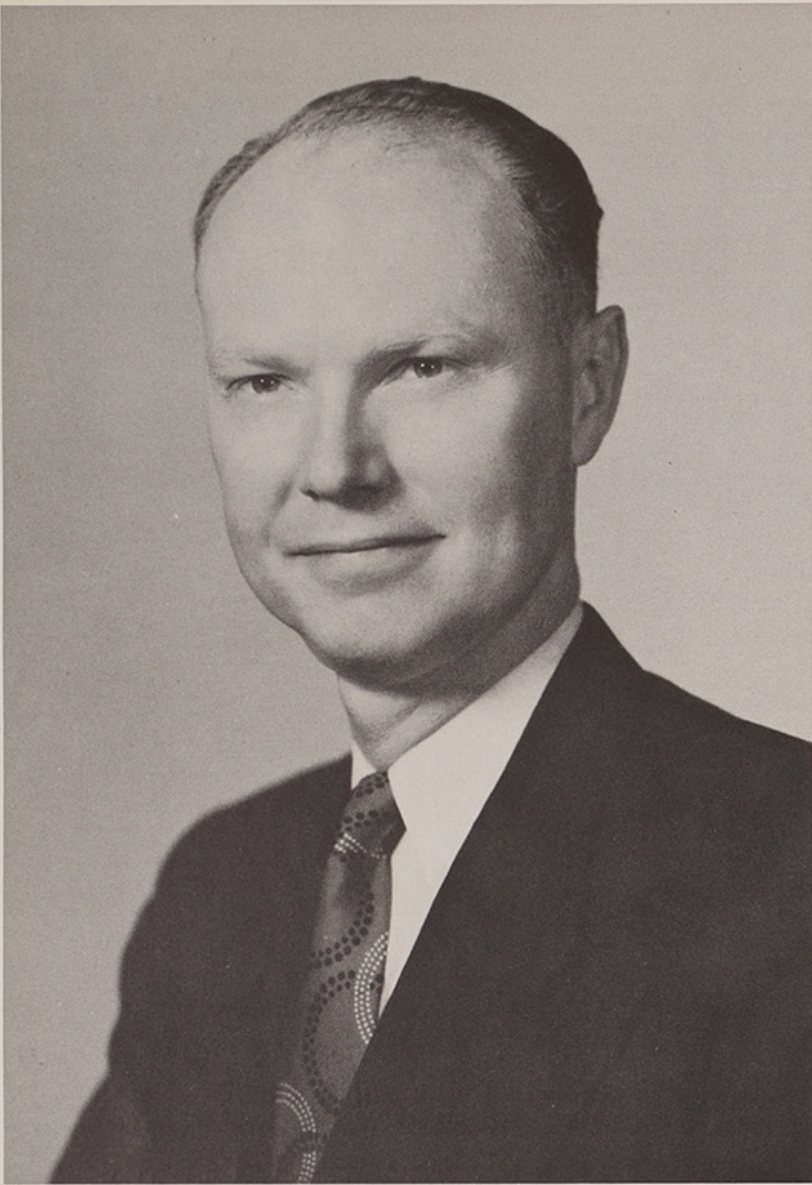






ADMINISTRATION  
and  
FACULTY





WILLIAM C. GAIGE  
A.B., A.M., Ed.D., Sc.D.  
President





FREDERICK J. DONOVAN  
A.B., M.A., Ed.D.  
Vice-President, Dean of Men



DOROTHY R. MIERZWA  
B.S., M.A., Ed.D.  
Dean of Students







S. ELIZABETH CAMPBELL  
Ed.B., Ed.M., Ed.D



ELIZABETH COOLING  
B.S., M.A., Ed.D.

### Coordinators of Practicum



GERTRUDE T. HANLEY  
Ed.B., Ed.M.



HELEN E. SCOTT  
A.B., A.M., Ed.D.





W. CHRISTINA CARLSON  
Ed.B., Ed.M.  
Registrar



MARY G. DAVEY  
Ed.B., Ed.M.  
Director of Public Relations

### Administrative Officers



WILLIAM F. FLANAGAN  
A.B., Ed.M., Ph.D.  
Assistant Director of Graduate and Extension Division

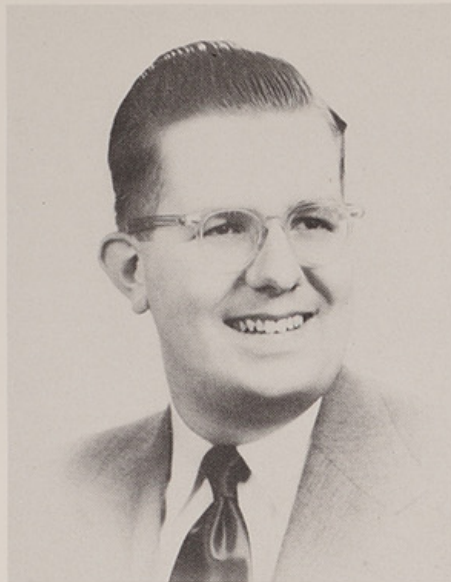


ERNEST L. OVERBEY  
B.S.  
Business Manager and Treasurer

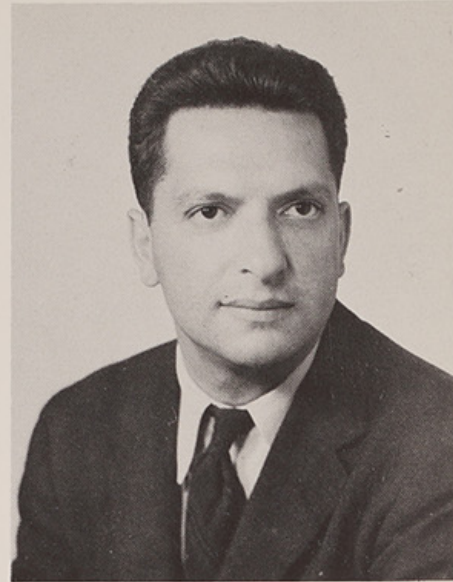




ROBERT T. AMOS  
A.B., A.M., Ph.D.



C. JAMES HERRICK  
A.B., A.M.



JOSEPH JARDINE  
A.B., A.M., Ph.D.

## Faculty

---



EDWARD M. McENTEE  
A.B., LL.B., Ed.D.



MARY E. LOUGHREY  
A.B., A.M., Ph.D.



EDITH C. BECKER  
B.F.A., M.F.A.





DOROTHY M. CROMPTON  
B.A.E., M.A.



RUTH ALTMANN  
B.A., M.A.



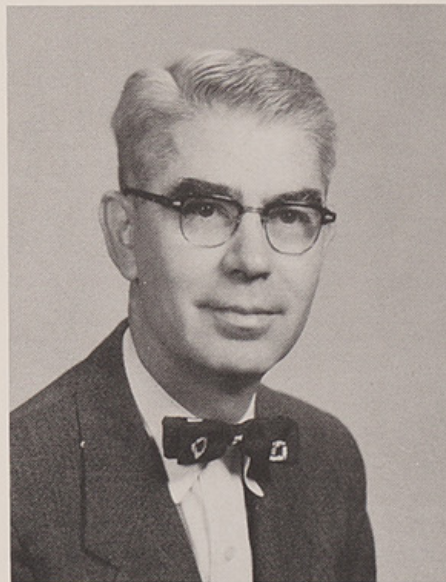
LILLIAN D. BLOOM  
A.B., A.M.

---

## Faculty



ROBERT COMERY  
A.B., A.M., Ph.D.



FRANK E. GREENE  
Ph.B., A.M., Ed.D.

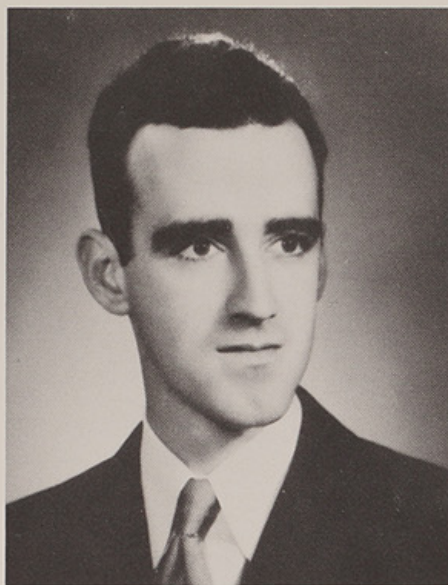


GRACE D. PREISSER  
A.B., A.M.





AMY A. THOMPSON  
A.B., A.M.



JAMES E. WHITE  
A.B., A.M.



NELSON GUERTIN  
A.B., A.M.

## Faculty

---



RITA V. BICHO  
Ed.B.



GERTRUDE E. MCGUNIGLE  
A.B., A.M.



JOSEPH D. GRAHAM  
A.B., A.M.





GRACE D. HEALEY  
B.L.I., Ed.M.



MARION I. WRIGHT  
Ed.B., A.M.



CHESTER E. SMOLSKI  
Ed.B.S., A.M.

---

## Faculty



CATHERINE M. CONNOR  
A.B., A.M.



C. OWEN ETHIER  
Ed.B., A.M.



KATHERINE S. PERRY  
A.B., A.M., Ph.D.





EVELYN M. WALSH  
A.B., M.A.



RUSSELL E. MEINHOLD  
B.A., M.S. in Ed.



NEVA L. ALLENDORF  
Ed.B., Ed.M.

## Faculty

---



ROBERT L. BROWN  
B.P.E., Ed.M.



BILLIE A. BURRILL  
B.S., M.S. in P.E.



E. VIRGINIA O'CONNOR  
Ed.B.





JOHN NAZARIAN  
Ed.B., A.M.



CHARLES W. UNDERHILL  
Ph.B., M.A.  
Retired July, 1958 after 22 years of service



BERNARD GORDON  
B.S.

---

## Faculty



MARY M. KEEFE  
A.B., Ed.B., M.A., Ph.D.



THEODORE LEMESHKA  
A.B., A.M.



RENATO E. LEONELLI  
B.S., Ed.M., Ed.D.



# Faculty of Henry Barnard School



Left to right: Dr. Mary T. Thorpe, Lucy F. Hanley, Catherine A. McGuiness,  
Diane Bocchicchio, Doris E. Gibson.



DR. MARY T. THORP  
Ed.B., Ed.M., Ed.D.  
Director of Henry Barnard School



Left to right: James F. Duffy, Jr., Bruce E. Bradford, Clement J. Hasenfus,  
Donald F. Lyons.





Left to right: Maybelle W. Magee, Elizabeth A. Gibson, Natalie A. Alger, Geraldine A. Carley, Prudence D. Fish, Ann Hajian.



Left to right: Wallace M. Whitelaw, Jr., Inez E. Jordan, Harriet V. Zurlinden, Avis G. Marden, Mary R. Doherty, Vincent Trainor, Jr.





Left to right: Regina B. Gill, Dorothy M. Crompton, Helen M. Murphy, Lucy F. Hanley, Corinne W. Salzer, Hope L. MacAndrew, William E. Sloane.



Left to right: Kathleen F. Kelley, Agatha Lavalley, Marjorie L. Bean, Isabel M. McGuinness, Mary G. Colton, Helen M. Triggs, Mary H. Zajac.



## Medical Staff



CLARA LOITMAN SMITH, M.D.  
College Physician

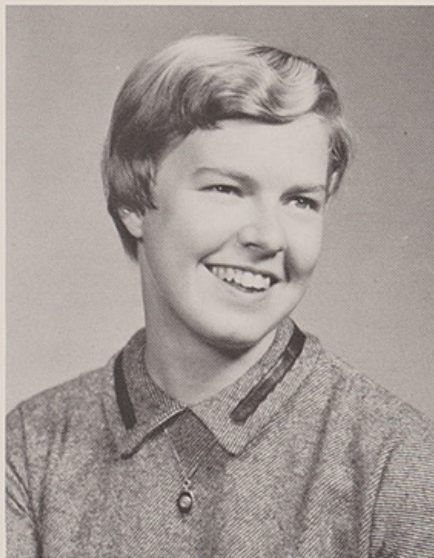


HELEN L. KEENAN, R.N.  
College Nurse

## Librarians



ROSE SNELL  
Ed.B., Ed.M.



JUDITH A. GAGNON  
A.B.



KATHERINE L. CUZNER  
B.S., A.M.



# Office Staff



VIOLET LORD  
Administrative Assistant



NORMA G. WEEKS, A.B.  
Bursar



Left to right: Kathleen Burns, Violet Lord, Harriet Cronich, Lucille Bevilacqua.





Senior steps — a vestige of tradition —





recall memories of . . .



the route to Barnard

teaching experiences







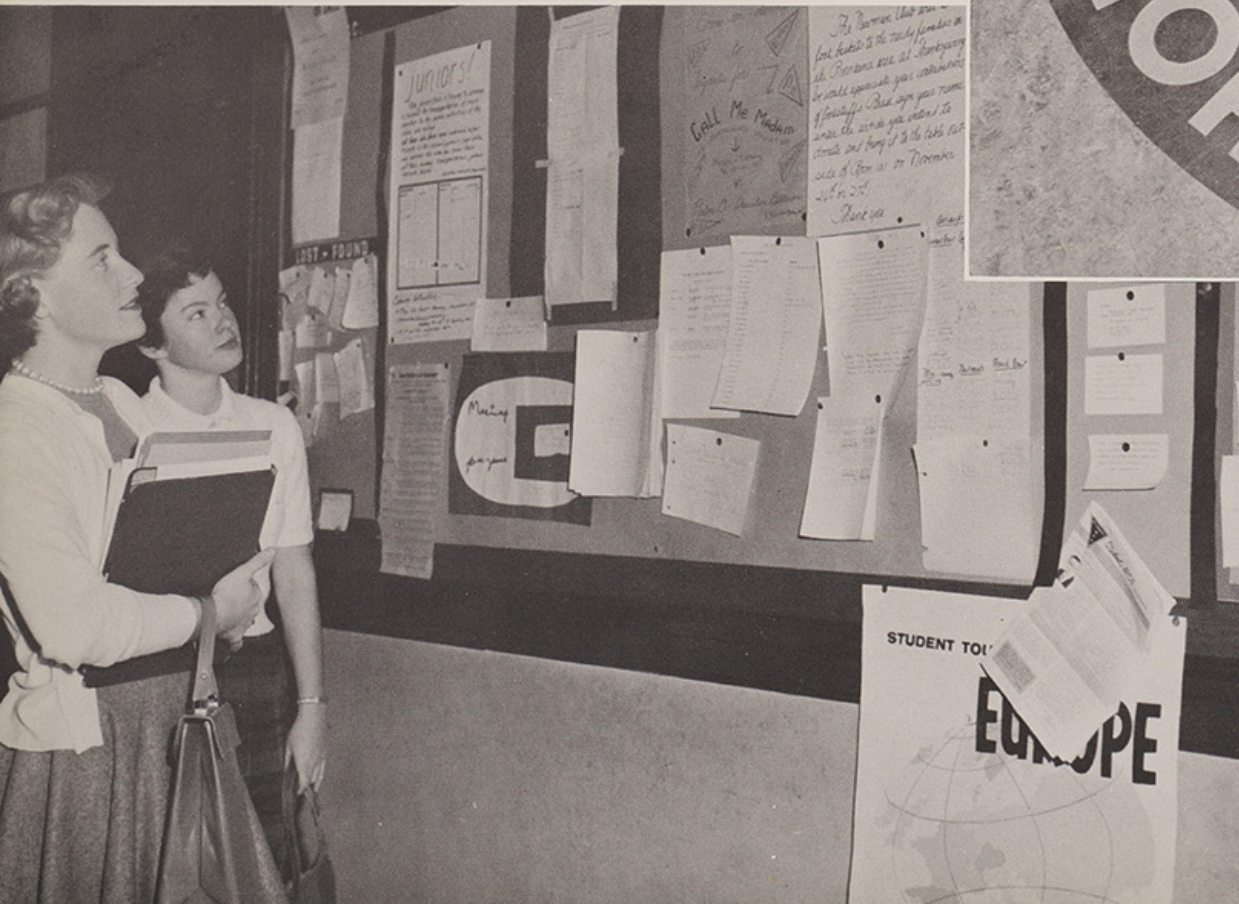
our bookstore bargains



cancelled classes



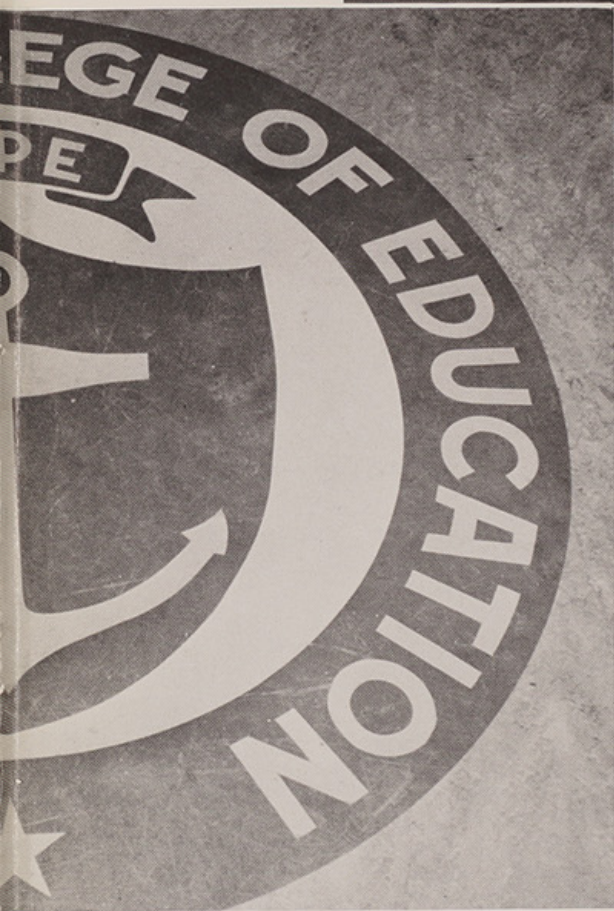
social events







notes from classmates



our college seal





those serious moments



creative days







lab reports

research, research, research







morning coffee with friends



lunch — a favorite pastime

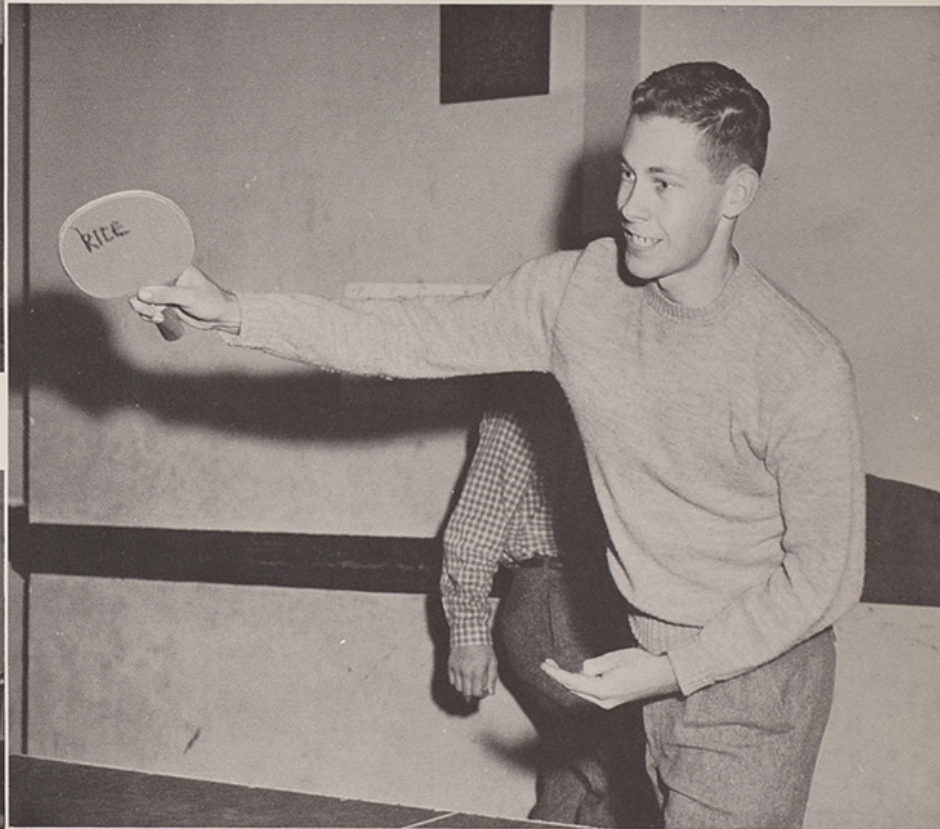




the lounge — chatting and cramming



bridge, smoke and coke



the winning point



FRESHMEN YEAR  
— a week of hazing



SOPHOMORE YEAR  
— an evening in Paris





# UNDERCLASSMEN DAYS



JUNIOR YEAR  
— an hour with Mopey Dick





last minute fittings

## OUR SENIOR

color and pageantry





# YEAR



threshold of the future.











# SENIORS





RAYMOND E. ANDERSON

47 Ferris Avenue Rumford, R.I.  
Kappa Delta Phi 3, 4; Soccer 3; Basketball  
2, 3; Track 2; M.R.A. 1, 2, 3, 4; Stunt Night  
1, 2, 3, 4.



MARJORIE H. APPLEBEY

58 Pleasant View Avenue Greenville, R.I.  
Kappa Delta Pi 4.



NANCY FROST BARTLETT

Whipple Avenue Oakland, R.I.  
Kappa Delta Pi 4; Dramatic League 1, 2, 3,  
4; Stunt Night 1, 2, 4; W.R.A. 1, 2, 3, 4;  
Hazing Committee 3; Canterbury Club 1, 2,  
3, 4.



GRIAN MARIE ART

19 Towanda Drive North Providence, R.I.  
Stunt Night 1, 2, 4, Chairman 2; Dramatic  
League 1, 2; W.R.A. 1, 2, 3, 4; Modern  
Dance Club 2, 3; May Day 1, 2, 4, Chore-  
ography 2, 4; Sophomore Hop Publicity  
Chairman 2.



ROSE MARIE AZAR

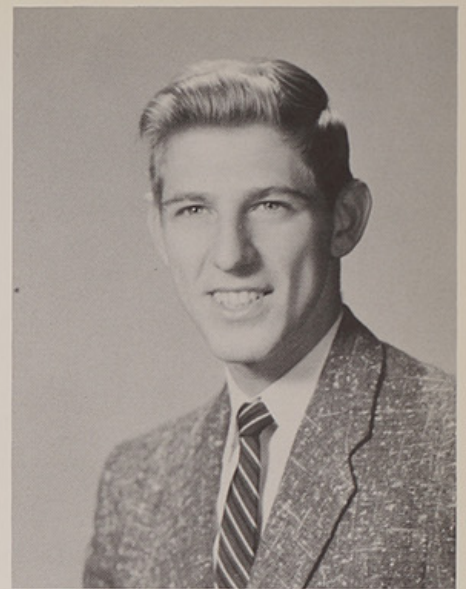
228 Washington Street Central Falls, R.I.  
Kappa Delta Pi 3, 4, Historian Reporter 4.





ANNA BELLINO

11 Betsy Williams Drive Edgewood, R.I.  
Stunt Night 2, 4; W.R.A. 1, 4; Future Teachers of America 1; Newman Club 3, 4; May Day 1; Sophomore Hop Committee 2; Student Council Dance Committee 4; Senior Prom Committee 4; Sophomore Hop Queen's Court 2.



ROBERT BERLAM

16 Georgian Court Johnston, R.I.  
*Who's Who Among Students in American Colleges and Universities* 3, 4; Class President 3, 4; Varsity Soccer 1, 2, 3, 4, Captain 4; Varsity Basketball 2; Varsity Track 1, 2, 4; Stunt Night 1, 2, 4; Kappa Delta Phi 2, 3, 4; M.A.A. 1, 2, 3, 4; Sophomore Hop Committee 2; Commencement Ball Committee 4.



ALINE MARIE BELANGER

120 Brookside Avenue West Warwick, R.I.  
President's List 2; *Who's Who Among Students in American Colleges and Universities* 3; Kappa Delta Pi 3, 4; Student Council Vice-President 4; *Ricoled* 4; Handbook Staff 2; Anchor 1, 2, 3, 4, Associate Editor 1, 2, Editor 2, 3, C.S.P.A. Conference 2, Executive Board 3; Choir 2; Daisy Chain 2; Swampscott Conference 4; May Day 1.



RAOUL F. BERNIER

120 Sterling Avenue Providence, R.I.  
Stunt Night 2, 3; Kappa Delta Phi 3; Camera Club 2.



GEORGETTE BILODEAU

35 Union Avenue Providence, R.I.  
*Who's Who Among Students in American Colleges and Universities* 3; Kappa Delta Pi 3, 4; Choir 1, 2, 4; Stunt Night 1, 3, 4, Chairman 3; W.R.A. 1, 2, 3, 4, Social Committee 2, President 3; Ski Club 3, 4; Newman Club 1, 2, 4; Commencement Ball Committee 4; Sophomore Hop Committee 2; Swampscott Conference 3.





BEVERLY ANN COLBY

21 Merrick Street Pawtucket, R.I.

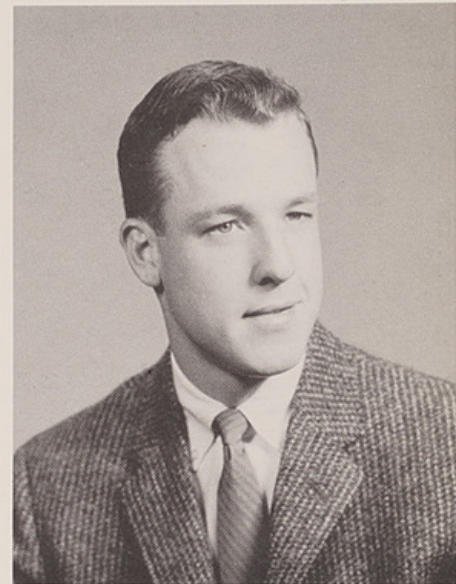
Stunt Night 1, 2, 3; W.R.A. 1, 2.



WILLIAM CONNOR

2 Ryan Avenue Ashton, R.I.

President's List 1; Editor of Helicon 4; Dramatic League 1, 2; I.R.C. 4.



DAVID A. CROWTHER

184 Cypress Street Providence, R.I.

Varsity Basketball 1, 2; Stunt Night 2, 4; Kappa Delta Phi 2, 3, 4; M.A.A. 1, 2, 3, 4; Newman Club 1, 2, 3, 4; Charles Carroll Club 1, 2, 3, 4.



ANN WINSLOW CORNELL

1220 Hope Street Bristol, R.I.

*Who's Who Among Students in American Colleges and Universities* 4; Kappa Delta Pi 3, 4; May Day Chairman 4; Queen's Court 1; Cheerleader 1, 2, 3, 4, Captain 4; W.R.A. 1,2,3,4, Secretary 2, 3, Vice-President 2; Stunt Night 1, 2, 4; Junior Prom Committee 3; Cap and Gown Day Committee 4; Hazing Committee 3; Daisy Chain 2; Kappa Delta Pi Winter Dance Committee 4; Bristol County Chairman Bond Drive 2.



BARBARA A. CROGHAN

17 Cathedral Avenue Providence, R.I.

Stunt Night 2, 3; International Relations Club 3; Future Teachers of America 1, 2; Newman Club 1, 2, 3, 4.





MARY CARDOSI

46 Windsor Road Pawtucket, R.I.  
Class Vice-President 3; Student Council 1, 2, 3, Secretary 2; Stunt Night 2, 3, 4, Co-Chairman 2; W.R.A. 1, 2, 3, 4; Newman Club 1, 2, 3, 4, President 2; Hazing Committee 3; May Day 1, 4; Big Eastern States Conference 2; Sophomore Hop Committee 2; Junior Prom Committee 3.



CAROLE A. CASEY

Pound Hill Road North Smithfield, R.I.  
Student Council Representative 2, 3, Secretary 2; Big Eastern States Conference 1; Swampscott Conference 3; Handbook Staff 1; Stunt Night 1, 4; W.R.A. 1, 2, 3, 4; Newman Club 1, 2; May Day 1, 4; Sophomore Hop Committee 2; All College Ball Committee 3; Student Council Dance Committee 3, 4; Class Day Committee 4; Senior Vespers Committee 4.



CAROLYN H. CAPRON

Main Street Chepachet, R.I.  
Choir 2; Stunt Night 2, 4; W.R.A. 1, 2, 3, 4; *Ricoled* 4; May Day 1, 2; Canterbury Club 1, 2; Hazing Committee 3.



NORMA S. CHERMS

23 Ralph Street Lakewood, R.I.  
Choir 2, 3, 4; Stunt Night 3, 4; May Day 1; Daisy Chain 2.



PAULINE CODERRE

121 Rebekah Street Woonsocket, R.I.  
Choir 4; Stunt Night 1, 2, 4; W.R.A. 1, 2, 3, 4; Newman Club 1, 2, 4; May Day 1, 2, 4.





JOSEPH BLANCO, JR.

276 Pleasant Street Pawtucket, R.I.

*Who's Who Among Students in American Colleges and Universities* 3; Class President 1, 2; Class Vice-President 1; Student Council Representative 1, 2; Varsity Track 1, 2, 4; Dramatic League 1, 2, 3, 4, Treasurer 1, 2, Alpha Psi Omega 3, 4, Grand Director 4; Stunt Night 1, 2, 4; Kappa Delta Phi 2, 3, 4; M.A.A. 1, 2, 3, 4; F.T.A. 1, 2, 3, 4, Program Chairman 2; Debating Club 2.



PATRICIA GAIL BRADY

18 Health Avenue Providence, R.I.

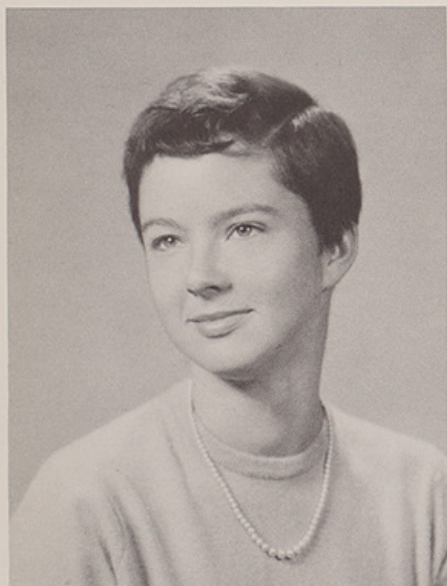
Class Secretary 4; Stunt Night 1, 2, 4; W.R.A. 1, 2, 3, 4; *Ricoled* 4; Ski Club 2; Newman Club 1, 2, 3, 4, Executive Board 2, 3, 4, Convention Delegate 2, Regional Secretary 2; Building Committee 1; May Day 1, Publicity Chairman 4; Sophomore Hop Dance Committee 2; Little Eastern States Delegate 2; Daisy Chain 2; Hazing Committee 3; Student Council Dance Committee 4; Senior Prom Committee 4; Class Day Committee 4; Commencement Committee 4.



ANN D. CALDERISO

45 Bay View Avenue Bristol, R.I.

Stunt Night 2, 4; W.R.A. 1, 2, 3, 4; Newman Club 1, 2, 3, 4.



ELIZABETH JOAN BURKE

58 Hatfield Street Pawtucket, R.I.

Kappa Delta Pi 3, 4; *Ricoled* Editor 4; Choir 4; Dramatic League 1; Stunt Night 1, 2, 3, 4, Decorations Chairman 2; W.R.A. 1, 2, 3, 4; Sophomore Hop Committee 2; Senior Vespers Committee 4; Columbia Scholastic Press Conference 4.

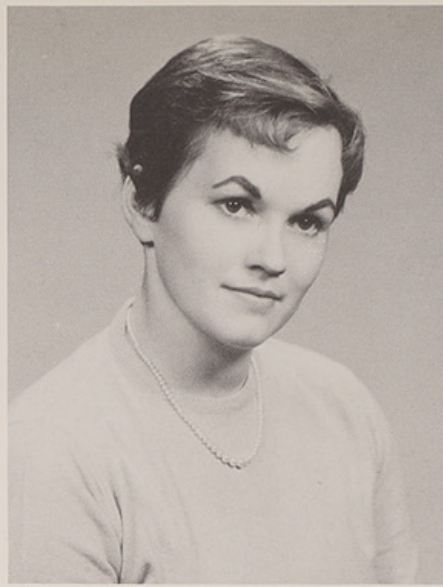


JANICE R. CAHIR

45 Raymond Street Providence, R.I.

Stunt 1, 2, 3; I.R.C. 3; W.R.A. 1, 2, 3, 4; Newman Club 1, 2.





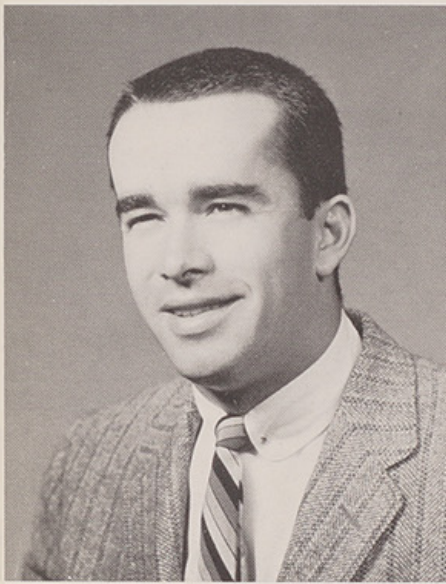
PATRICIA A. DALTON

579 Gaskills Street Woonsocket, R.I.  
Little Eastern States Conference 1; Dramatic League 2, 3, 4; May Day 1; Newman Club 1, 2; W.R.A. 1, 2, 3, 4; Stunt Night 2, 3, 4; Helicon 2; Hazing Committee 3.



GLORIA V. DeCONCILIS

20 Metcalf Avenue North Providence, R.I.  
W.R.A. 1, 2, 3, 4; May Day 1.



GEORGE H. CURTIN

1529 Pawtucket Avenue Rumford, R.I.



ELAINE DEMARJIAN

338 Prospect Street Woonsocket, R.I.  
Dramatic League 1; Stunt Night 1, 2, 3, 4; W.R.A. 1, 2, 3, 4; Future Teachers of America 1; Canterbury Club 1, 2, 3, 4; May Day 1; Christmas Concert Committee 2.



ELEANOR DEMARJIAN

338 Prospect Street Woonsocket, R.I.  
Canterbury Club 1, 2, 3, 4; Stunt Night 2; May Day 1, 2; W.R.A. 1, 2, 3, 4; S.N.E.A. 1.





PATRICIA ROUSE DENIGER

50 Harvard Avenue Providence, R.I.  
Anchor 3, 4; Choir 1, 2, 3, 4; Stunt Night 2, 3; I.R.C. 3; W.R.A. 1, 2, 3, 4; May Day 1; Daisy Chain 2; Canterbury Club 3, 4; Sophomore Hop Queen's Court 2.



JUDITH MARIE DODD

9 Florence Street Riverside, R.I.  
*Who's Who Among Students in American Colleges and Universities* 4; Student Council Representative 4; Social Committee Co-Chairman 3; *Ricoled* Make-Up Editor 4; Stunt Night 1, 2, 4; F.T.A. 2; Newman Club 1, 2, 4; Sophomore Hop Committee 2; Junior Prom Committee 3; Student Council Dance Committee 3, 4; All College Ball Committee 3; Commencement Ball Committee 4; Little Eastern States Conference 2; Daisy Chain 2; Cap and Gown Day Committee 4; Class Day Committee 4.



ROBERT J. DRAPER

14 Womantam Lane Cumberland, R.I.  
Dramatic League 3; Stunt Night 2, 3, 4; Men's Athletic Association 1, 2, 3, 4; Big Eastern States Conference 3; Junior Prom Committee 3; Curriculum Revision Committee 1.



JANE DEPARI

283 Mt. Pleasant Avenue Providence, R.I.  
Choir 2; Stunt Night 1, 2; W.R.A. 1, 2, 3, 4; Newman Club 2; May Day 1.



CLAIRE DRAINVILLE

502 North Main Street Woonsocket, R.I.  
Stunt Night 4; W.R.A. 1, 2, 3, 4; Newman Club 2; May Day 1, 2, 4; Dance Committee 3; Dance Club 4; Cap and Gown Committee 4.





JACQUELINE DUCHARME  
53 North Main Street Pascoag, R.I.  
W.R.A. 1, 2, 3, 4; May Day 1.



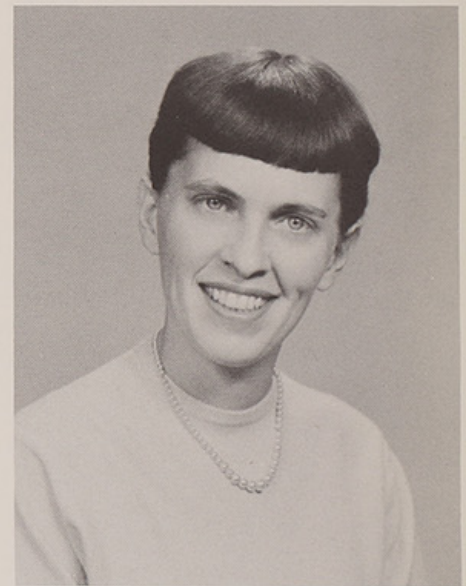
MARGUERITE H. DUFRESNE  
155 Reynolds Avenue Providence, R.I.  
Choir 2, 3, 4; Dramatic League 2, 3, 4; Stunt  
Night 3; W.R.A. 1, 2, 3, 4; Ski Club 2.



JACQUELYN DUBOIS  
232 Ballou Street Woonsocket, R.I.  
Canterbury Club 1, 2, 3, 4; Dramatic Club 1;  
Stunt Night 1, 2, 3, 4; May Day 1, 2; Class  
Day 2; W.R.A. 1, 2, 3, 4; S.N.E.A. 1, 2.



MARCIA DWORKIN  
38 Greaton Drive Providence, R.I.  
W.R.A. 1, 2, 3, 4.



VIRGINIA O. DYER  
17 Hutchins Court East Greenwich, R.I.  
Choir 1; Stunt Night 1, 2; May Day 1, 2;  
All College Girl Court 2.





MARCELLA ELLIS

225 Morris Avenue Providence, R.I.  
Stunt Night 2, 3; I.R.C. 3; Newman Club 1, 2; Helicon 3.



NANCY J. FARMER

55 Atlantic Avenue Providence, R.I.  
Stunt Night 1, 2, 3; W.R.A. 1, 2; Canterbury Club 2, 3, 4, Secretary-Treasurer 3.



JULES R. C. GADOURY

154 Talcott Street Woonsocket, R.I.  
Varsity Soccer 1, 2; Intramural Basketball 1, 2; Varsity Track 1; Stunt Night 1, 2, 3, 4, Chairman 1; President's List 3; M.A.A. 1, 2, 3, 4; Future Teachers of America 1, 2, 3, 4.



PATRICIA FLYNN

37 Osborn Street Providence, R.I.  
Anchor Staff 1, 2, 3; Debating Club 1; May Day 1.



RICHARD GADBOIS

271 Lonsdale Avenue Pawtucket, R.I.





ELIZABETH GLOD

35 Fifth Avenue Woonsocket, R.I.  
Social Committee 1; Women's Recreational Association 1, 2, 3, 4; May Day 1.



ELIZABETH ANN GOSELIN

1226 Plainfield Street Johnston, R.I.  
President's List 2; *Who's Who Among Students in American Colleges and Universities* 4; *Ricoled* Assistant Editor 4; Kappa Delta Pi 3, 4; Social Committee Co-Chairman 4; Choir 2, 3, 4, President 4; Stunt Night 1, 2, 4; Cheerleader 1, 2, 3, 4; Anchor Point Committee 1, 2, 3, 4, Chairman 4; Commencement Ball Committee 4; Senior Vespers Committee 4; Daisy Chain 2; May Day 1, 2, 4; Student Council Dance Committee 2, 4; All College Ball Committee 3; Winter Weekend Committee 4; W.R.A. 1; Newman Club 1, 2.



LEONARD M. GAUCHER, JR.

103 Waterview Avenue Riverside, R.I.



WALTER JOHN GLOWICZ

101 Carter Avenue Pawtucket, R.I.



CATHERINE L. GREENE

53 Prospect Street East Greenwich, R.I.  
Kappa Delta Pi 3, 4; W.R.A. 1, 2, 3, 4; Newman Club 1.





LOUISA SARAH HENAULT

30 Granite Street West Warwick, R.I.  
Anchor Staff 1, 2, 3, 4, Co- Make-up Editor  
3, 4; Choir 1, 2; Handbook Staff 2; Stunt  
Night 4; Newman Club 1; May Day 1;  
Daisy Chain 2; All College Ball Committee 4.



ELIZABETH F. HOLIHEN

38 Dartmouth Avenue Riverside, R.I.  
Social Committee Co-Chairman 4; *Ricoled*  
4; Little Eastern States Conference 4; Soph-  
omore Hop Committee 2; Junior Prom Com-  
mittee 3; Commencement Ball Committee 4;  
Stunt Night 1, 2, 4, Music Co-Chairman 4;  
Choir 3, 4; Daisy Chain 2; Hazing Com-  
mittee 3; Student Council Dance Committee  
4; Winter Weekend Committee 4; All Col-  
lege Ball Committee 3; Cap and Gown Day  
Committee 4; May Day 1; Special Choral  
Group 3, 4; W.R.A. 1, 2, 3, 4; F.T.A. 2;  
Newman Club 1, 2, 4.



JOYCE G. HUMPAL

Wilson Avenue Pascoag, R.I.  
President's List 3; W.R.A. 1, 2, 3, 4.



EVELYN HOPE

Chopmist Hill Road Chapachet, R.I.



ALTA HOPKINS

Box 98 North Scituate, R.I.  
Choir 2, 3, 4; International Relations Club  
2, 3, 4; W.R.A. 1, 2, 3, 4, Treasurer 1; De-  
bating Club 1; May Day 1, 2, 4; Modern  
Dance Club 2, 3; Daisy Chain 2; Fencing  
4; May Day Committee 4; Curriculum Re-  
vision Committee 2.





JOHN JUDGE

120 Ophelia Street Providence, R.I.  
Class President 3; Student Council 1, 3,  
Treasurer 3; Varsity Soccer 1, 2, 3, 4, Co-  
Captain 4; Men's Athletic Association 1, 2,  
3, 4.



MAUREEN KENNY

2 Waterman Avenue Cranston, R.I.  
Kappa Delta Pi 3, 4, Secretary 4, Dance  
Committee 3; *Ricoled* 1; W.R.A. 1, 2, 3, 4;  
Newman Club 1, 2, 3, 4; Stunt Night 1, 2,  
3, 4; Sophomore Hop Ticket Chairman 2;  
Hazing Committee 3; Building Committee  
1; Bond Drive 1, 3; May Day 1; House  
Committee for Operetta 1; Student Council  
Dance Committee 4.



MARJORIE SWAN JACKSON

22 Pelham Parkway North Providence, R.I.  
Student Council Representative 3; Dramatic  
League 2, 3, 4, Treasurer 3; Stunt Night 2,  
3, 4; W.R.A. 1, 2, 3, 4; Cheerleader 2, 3, 4;  
Canterbury Club 1, 2, 3, 4, Vice-President  
2, President 3; All College Ball Queen's  
Court 3; May Day 1, 2, 3; Marshall 1, 2, 3;  
Graduation Marshall 1, 2, 3.



HELEN A. KERRINS

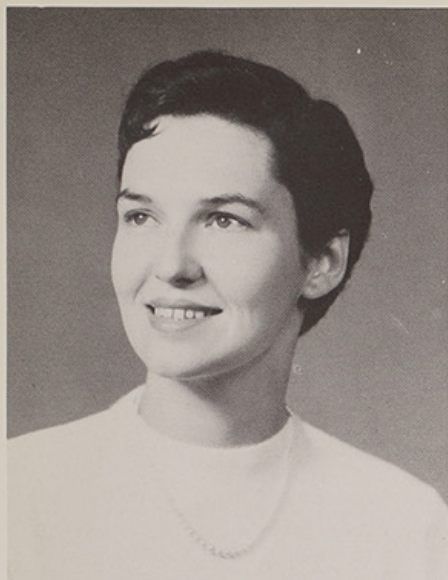
75 Dean Avenue Centredale, R.I.  
President's List 3; Kappa Delta Pi 3, 4;  
Student Council Representative 3; Choir 1,  
2, 3, 4; Special Choral Group 3; Stunt Night  
1, 2, 3, 4; W.R.A. 1, 2, 3, 4; Newman Club  
1, 2, 3; May Day 1, 2, 3, 4; Daisy Chain 2;  
Hazing Committee 3; Sophomore Hop Com-  
mittee 2; Junior Prom Committee 3; Mod-  
ern Dance Club 4; Student Council Dance  
Committee 4.



DOROTHY ANNE LABUCKI

32 Frederick Street Providence, R.I.  
Choir 1, 2, 3, 4; Dramatic League 2; Stunt  
Night 1, 3.





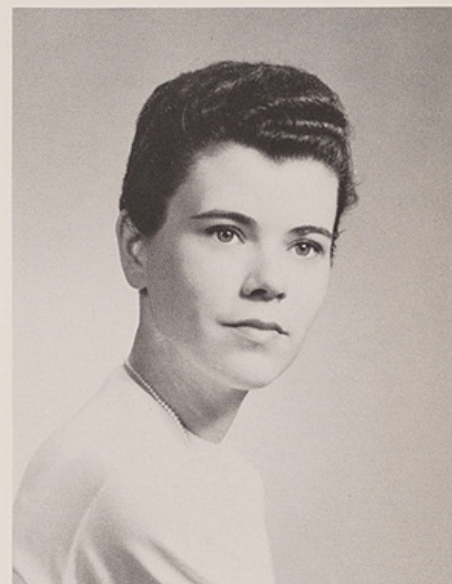
JACQUELINE LAVALLEE

37 Lennon Street Providence, R.I.  
Stunt Night 1, 2, 4, Committee 2, 4; W.R.A. 1, 2, 3, 4; Future Teachers of America 1; Newman Club 1, 2, 3, 4; Sophomore Hop Committee 2; Sophomore Hop Queen's Court 2; Senior Prom Committee 4; Student Council Dance Committee 4; May Day Committee 4; May Day 1, 4; Commencement Day Committee 4.



ROBERTA ANN LAVALLEE

40 Parker Street West Warwick, R.I.  
Kappa Delta Pi 3, 4; Anchor 2, 3, 4, Business Manager 3; Choir 1, 2, 3, 4; Stunt Night 2, 4; W.R.A. 1; *Ricoled* 4; F.T.A. 2; Newman Club 2, 4; Sophomore Hop Committee 2; Junior Prom Committee 3; All College Ball Decorations Chairman 4; Kappa Delta Pi-F.T.A. Dance Committee 3; May Day 1.



CLAUDIA LITTLEFIELD

71 Medway Street Providence, R.I.



PRISCILLA ANN LEONARD

53 Brook Street West Barrington, R.I.  
Kappa Delta Pi 3, 4, Social Committee Co-Chairman 4; Anchor 1, 2, 3, 4, News Editor 3, C.S.P.A. Conference 3; Stunt Night 2, 3, 4; I.R.C. 3, Treasurer 3; Canterbury Club 3, 4; May Day 1, 3, Queen's Court 3; Daisy Chain 2.



ELIZABETH ANN LESPERANCE

47 Hebert Street West Warwick, R.I.  
Anchor Staff 1, 2, 3, Associate Editor 3, Editor-in-Chief 4; Handbook Editor 2; Stunt Night 4; W.R.A. 1, 2, 3, 4; *Ricoled* 4; Newman Club 1, 2; May Day 1; Choir 1, 2, Accompanist 3, 4.





FRANCIS MAGEAU

Centennial Street Pascoag, R.I.  
Stunt Night 2, 4; M.A.A. 1, 2, 3, 4; F.T.A.  
1.



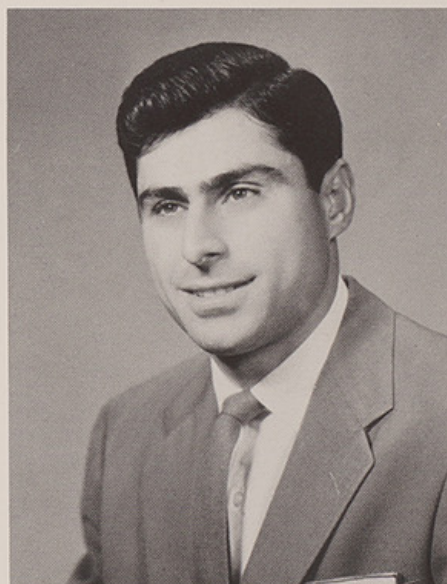
CAROLE JEAN MAGEE

45 Haile Street Warren, R.I.  
Choir 1, 2, 3, 4; Stunt Night 1, 2, 3, 4;  
W.R.A. 1, 2, 3, 4; Newman Club 1.



NANCY LOUGH

142 Fifth Street Providence, R.I.



MICHAEL MAKOKIAN

43 Bernon Street Providence, R.I.  
M.A.A. 1, 2, 3, 4.



FRANCES B. MAKOWSKI

Eagle Peak Road Pascoag, R.I.  
W.R.A. 1, 2, 3, 4; May Day 1.





KATRINA R. MALATT

30 Bellevue Avenue Woonsocket, R.I.  
Anchor 2; Dramatic League 2, 3, 4; Stunt Night 2, 3, 4; W.R.A. 1, 2; Camera Club 2; May Day Court 3; Hazing Committee 3.



FRANCES M. MALLOY

Scott Road Ashton, R.I.  
Choir 2, 3; Class Treasurer 1; Dramatic Club 1; Stunt Night 3, 4; W.R.A. 1, 2, 3, 4; S.N.E.A. 2, 3; Newman Club 3, 4.



JOAN McCATEER

137 Dexterdale Road Providence, R.I.  
Anchor 1, 2; May Day 1; W.R.A. 1, 2, 3, 4.



VICTORIA TERESA MANGIONE

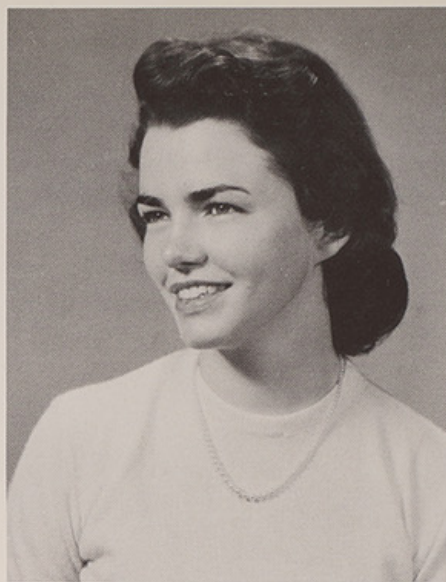
58 Park Avenue Edgewood, R.I.  
Choir 2; May Day 1; Stunt Night 3, 4; Women's Recreational Association 1, 2, 3, 4; Future Teachers of America 1; Newman Club 2, 3, 4.



MAUREEN ANNE MAYNARD

25 Armington Avenue Riverside, R.I.  
Kappa Delta Pi 3, 4, Social Committee Co-Chairman 4; Choir 1, 2, 3, 4, Secretary-Treasurer 2, Vice-President 3; Dramatic League 1, 2; Stunt Night 1, 2, 3; I.R.C. 3, Secretary 3; W.R.A. 1, 2, 3, 4; Ski Club 1; Newman Club 1, 2, 3, 4; Daisy Chain 2; May Day 1, Flower Girl 3.





GAIL ANN McCAUGHEY

217 Front Street Lonsdale, R.I.

Class Secretary 3; Class Treasurer 2, 3; Choir 1; Stunt Night 1, 2, 3, 4; W.R.A. 1, 2, 3, 4; Newman Club 1, 2; Sophomore Hop Committee 2, Queen's Court 2; All College Ball Queen's Court 1; May Day Queen's Court 3; May Day 1, 2, 3, 4.



PHYLLIS McDOLE

20 Deer Street Rumford, R.I.

*Who's Who Among Students in American Colleges and Universities* 4; Class Vice-President 3; Social Committee Chairman 2; Student Council Representative 4; Stunt Night 1, 2, 4; W.R.A. 1, 2, 3, 4; May Day 1; Queen's Court 2; Hazing Committee 3; Bond Rally Committee 2; Commencement Ball Committee 4; Student Council Dance Publicity Chairman 4.



MARILYN A. McCAFFREY

123 Mayfair Road Gaspee Plateau, R.I.

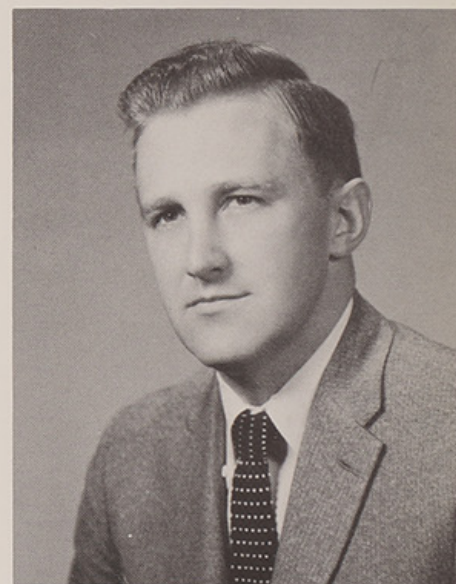
Anchor Staff 1, 2, 3, Typing Editor 2; Choir 1, 2, 3; Social Committee 1; Stunt Night 1, 2, 4; *Ricoled* 4; Delta Sigma 1, 2, 3, 4, Treasurer 1, Program Chairman 3, Executive Board Chairman 3, President 4; Delegate to Rhode Island Model College Congress 1, 2; Delegate to New England Speech Association Conference 1, 4; May Day 1; Chairman for Queen's Court Committee 4; Daisy Chain 2; Junior Freshman Party Committee 3; Vespers Committee 4.



JOAN McGWINN

129 Ontario Street Providence, R.I.

W.R.A. 1, 2; I.R.C. 1, 2, 3, 4, President 4; Debating Club 1, 2, 4, Secretary 4; S.N.E.A. 1, 2, 3, 4, Secretary 4; Newman Club 1, 2, 3, 4; Anchor 1, 2.



JOHN McGRANE

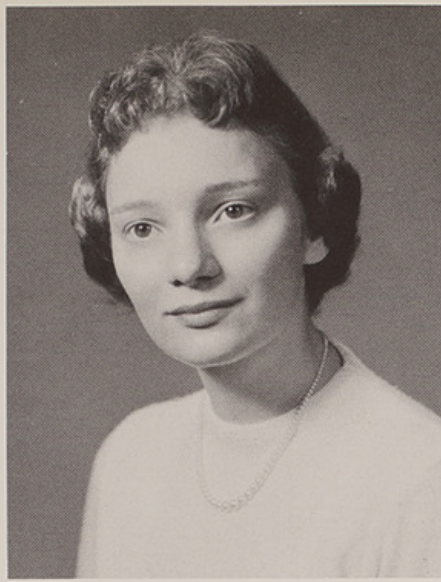
313 Walcott Street Pawtucket, R.I.





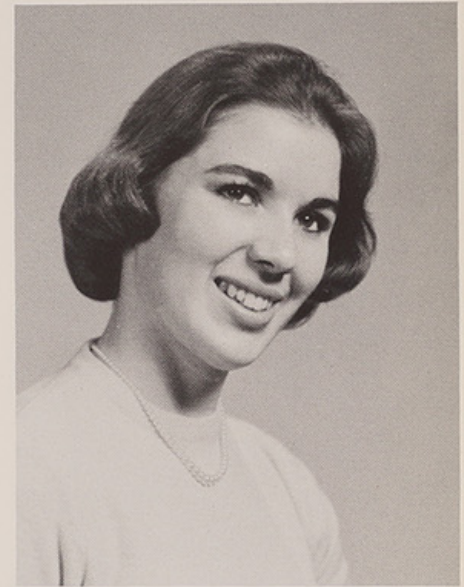
MARCIA McVICKER

76 Pemberton Street Providence, R.I.  
Class Vice-President 2, Class Secretary 3,  
Class Treasurer 3; Eastern States Conference  
2; Stunt Night 1, 2, 3, Co-Chairman 1; W.  
R.A. Publicity Chairman 3; Newman Club  
1; Helicon 1.



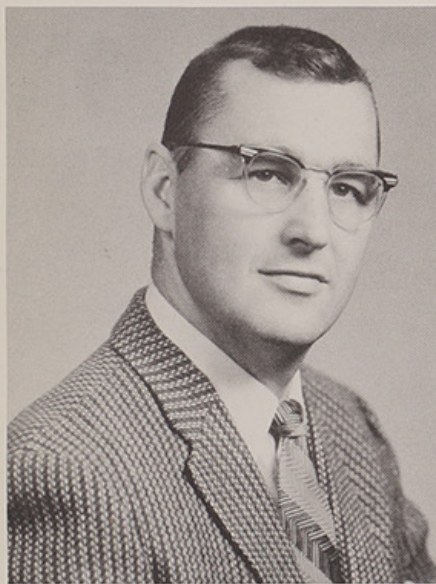
MARILYN L. MEDRECH

158 Cypress Street Providence, R.I.  
Kappa Delta Pi 4; Future Teachers of Amer-  
ica 3, 4.



JACQUELINE NELSON

60 Blaisdell Street Cranston, R.I.  
Dramatic League 2; Stunt Night 4; W.R.A.  
1, 2, 3, 4; May Day 1, Committee 4.



RALPH MICKELSON

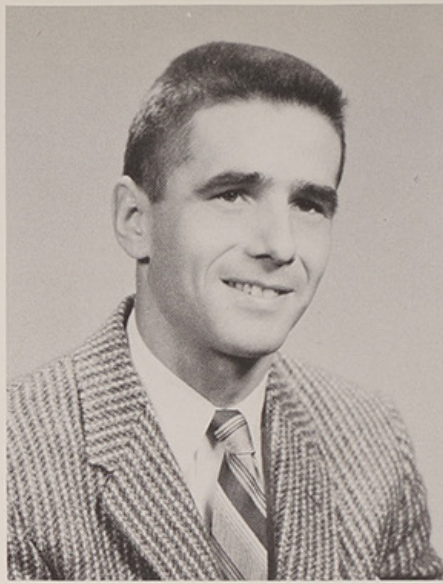
257 Hughes Avenue Pawtucket, R.I.  
M.R.A. 1, 2, 3, 4.



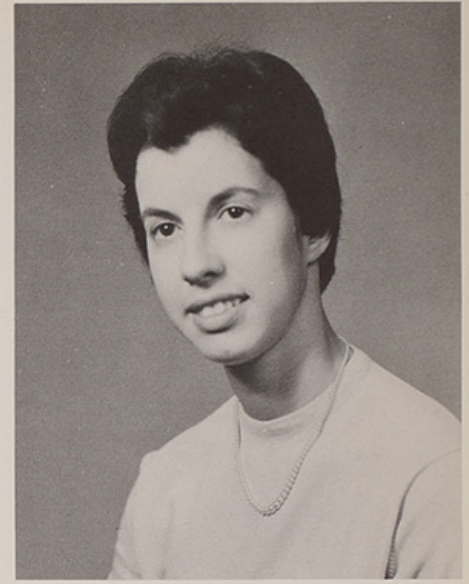
MARY PATRICIA MURPHY

69 Arnold Street Providence, R.I.  
Kappa Delta Pi 3, 4; Stunt Night 2; W.R.  
A. 1, 2; Newman Club 1, 2.





RAYMOND O'CONNELL  
98 Arnold Street Providence, R.I.  
Men's Athletic Association 4.



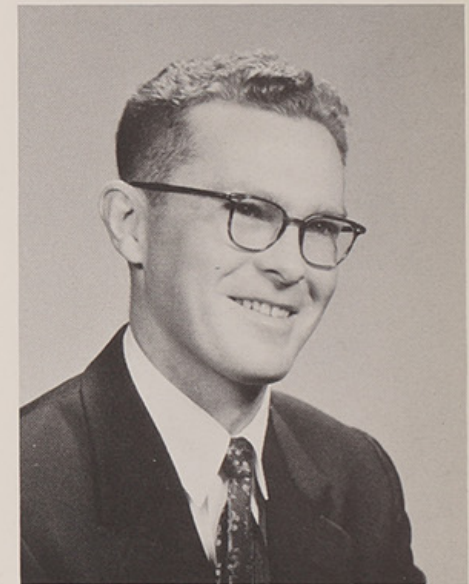
DOLORES A. PACHECO  
10 Westly Street West Warwick, R.I.  
Anchor Staff 1, 2, 3, Typing Editor 3; Choir  
2, 3; Stunt Night 2, 3; W.R.A. 1, 2, 3, 4;  
*Ricoled* 4; Newman Club 2, 3.



LOIS CATHERINE O'CONNELL  
167 Walcott Street Pawtucket, R.I.  
Dramatic League 1; Stunt Night 1, 2, 4;  
W.R.A. 1, 2, 3, 4; Dance Club 2, 3; May  
Day Choreography 2, 4; Future Teachers of  
America 1, 2, Secretary 2; Newman Club  
1, 2, 4.

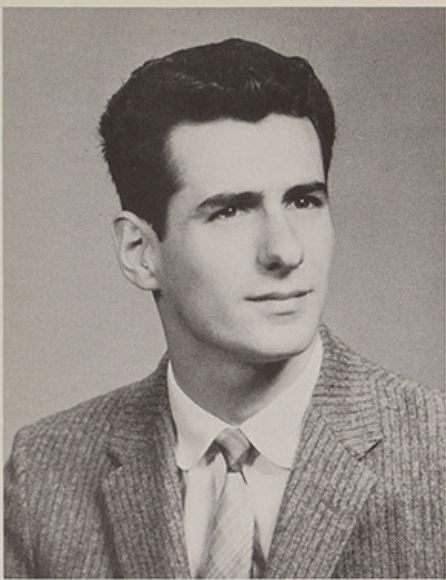


MILLICENT JEAN PACHECO  
144 Mauran Avenue East Providence, R.I.  
Anchor 3, 4; Choir 2, 3, 4; Stunt Night 3,  
4; I.R.C. 4; W.R.A. 1, 2, 3, 4; Canterbury  
Club 3, 4; May Day 1, 3, Queen's Court 3;  
Daisy Chain 2.



TIMOTHY PAIGE  
205 Second Avenue Woonsocket, R.I.  
Class Vice-President 1; Student Council 2;  
Kappa Delta Pi 3, 4.

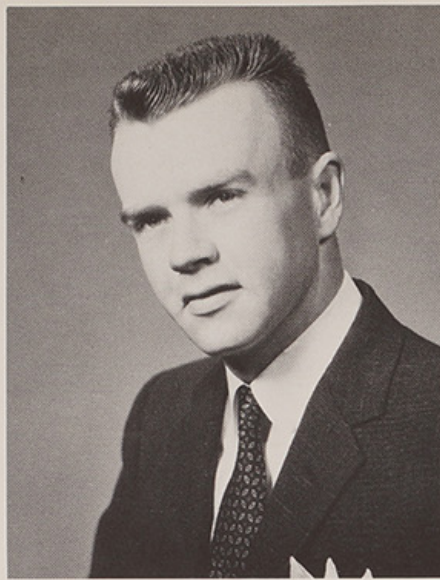




GERARD P. PANTALONE

83 Washington Street Central Falls, R.I.

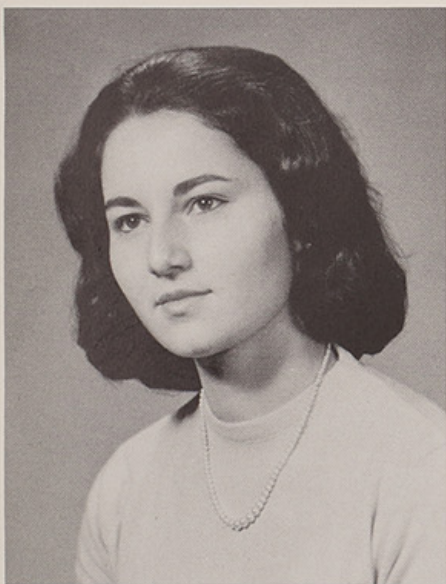
Soccer 1, 2; Basketball 1, 2; Stunt Night 1, 2; Hazing Committee 3; M.A.A. 1, 2, 3, 4; Sophomore Hop Committee 2.



RAYMOND A. PAYNE

72 Linwood Avenue Providence, R.I.

Men's Athletic Association 1, 2, 3; Future Teachers of America 1; Newman Club 4.



ANGELA PARRILLO

1601 Cranston Street Cranston, R.I.

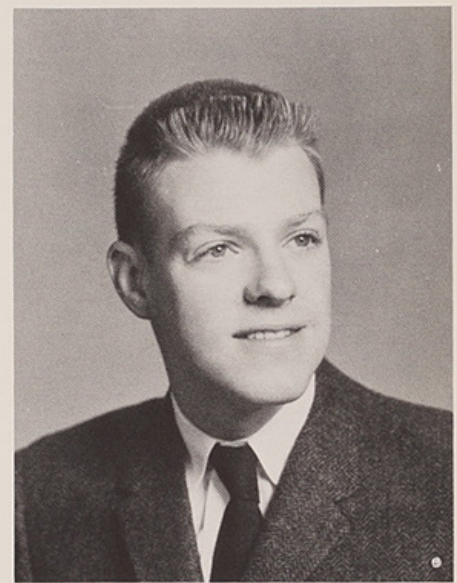
W.R.A. 1, 2, 3, 4; Stunt Night 1, 2, 3, 4.



BARBARA F. PATNAUDE

114 Kentland Ave. North Providence, R.I.

Stunt Night 1, 2, 3; W.R.A. 1, 2, 3; Newman Club 2.

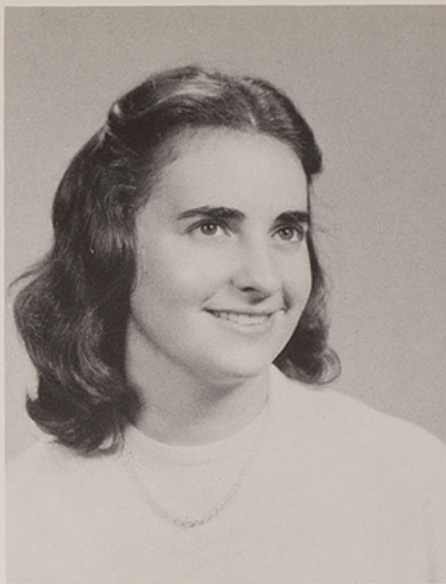


JOHN B. PALMER

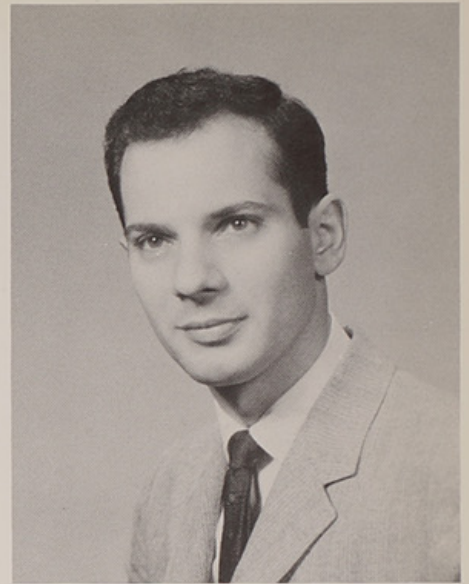
71 Legion Way Cranston, R.I.

*Who's Who Among Students in American Colleges and Universities* 4; Anchor Photographer 1, 2; Varsity Track 1, 2, 3, 4; Stunt Night Lighting Chairman 1, 2, 3, 4; Kappa Delta Phi 2, 3, 4, Treasurer 3; National Representative 4; M.A.A. 1, 2, 3, 4; *Ricoled* Photographer 3; Ski Club 1, 2, 3, 4, Vice-President 1, President 2, Treasurer 3; Camera Club Founder 3; Debating Club 1, 2, 3, 4, Vice-President 2, R. I. Model Congress 2, 3; Junior Prom Co-Chairman 3; Hazing Committee 3; Commencement Ball Committee 4.





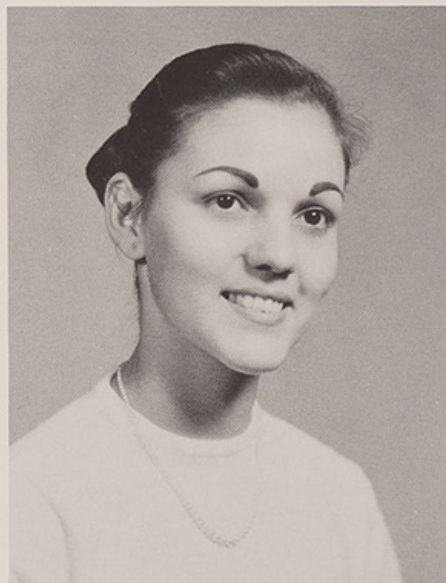
MARGUERITE TERESA PETRONE  
 56 Marion Avenue Edgewood, R.I.  
 Choir 2, 3; Dramatic League 1; Stunt Night  
 2, 4; W.R.A. 1, 2, 3, 4; F.T.A. 3; Newman  
 Club 3, 4.



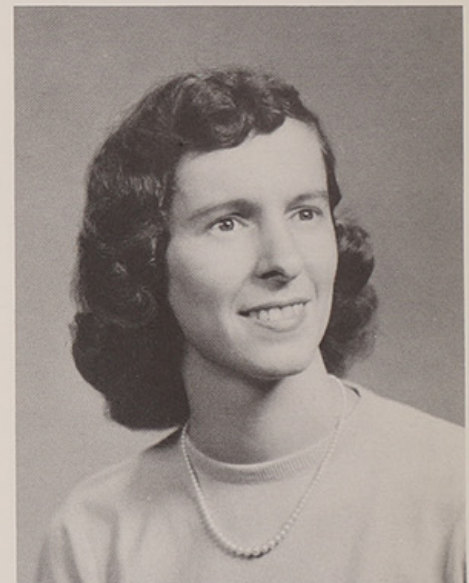
STEPHEN PETTINE  
 100 Bowen Street Providence, R.I.  
 M.A.A. 1, 2, 3, 4.



EMILY HARRISON PERRY  
 996 Hope Street Bristol, R.I.  
 Choir 1, 2, 3, 4; Dramatic League 1; Stunt  
 Night 1, 2, 3; W.R.A. 1; Canterbury Club  
 1, 2; Secretary 3, Vice-President 4.



RACHEL C. PINTO  
 23 Slemo Lane Central Falls, R.I.  
 Student Council Representative 1; Kappa  
 Delta Pi 3, 4, President 4.



NANCY OUSLEY POLLOCK  
 156 Ballston Avenue Pawtucket, R.I.  
 Anchor Staff 3; Choir 1, 2, 3, 4; Stunt Night  
 2; Kappa Delta Pi 4; W.R.A. 1, 2, 3, 4;  
 Canterbury Club 3, 4; May Day 1.





ROBERT J. QUIGLEY

80 Pelham Street      Newport, R.I.

Varsity Basketball 2; Stunt Night 2, 4; M. A.A. 1, 2, 3, 4; Charles Carroll Club 1, 2, 3, 4; Future Teachers of America 1.



SARA F. QUINN

4 Roanoke Street      Providence, R.I.

Social Committee Co-Chairman 2; Stunt Night 1, 2, 3, 4; W.R.A. 1, 2, 3, 4; Ski Club 2; Newman Club 1, 2, 3; Helicon 2; Sophomore Hop 2; Junior Prom Committee 3; Daisy Chain 2; May Day 1.



SHIRLEY CARDOZA REIS

3 Jenks Avenue      Central Falls, R.I.



MAMIE D. RALPH

152 Grand Avenue      Edgewood, R.I.

President's List 4; Kappa Delta Pi 3, 4.



JOAN RAYMOND

225 Cowden Street      Central Falls, R.I.

W.R.A. 1, 2, 3, 4; Stunt Night 1, 2, 3, 4; Newman Club 1, 2.





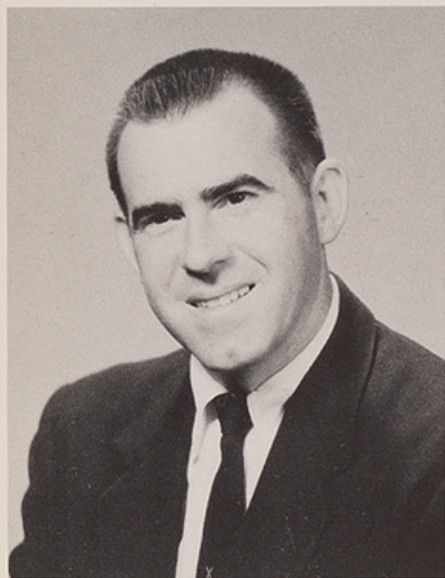
LOIS M. REYNOLDS

23 Boutwell Street Pawtucket, R.I.  
Stunt Night 1, 2, 3; I.R.C. 3; W.R.A. 1, 2,  
3, 4; Newman Club 1, 2, 3.



ARLENE PAULA RICCIARDI

63 Moorland Avenue Edgewood, R.I.  
Anchor Staff 3, 4; Choir 1, 2, 3, 4; Stunt  
Night 3, 4; International Relations Club 3,  
4; Program Committee Chairman 3; W.R.A.  
1, 2, 3, 4; Ski Club 1, 4; Future Teachers  
of America 4; Newman Club 3, 4; May Day  
1; Daisy Chain 2; Marshall 3.



JOSEPH L. RENQUIN

508½ Pawtucket Avenue Pawtucket, R.I.  
Varsity Soccer 2, 3, 4; Varsity Basketball 1,  
2, 3, 4; Varsity Track 2; M.A.A. 1, 2, 3, 4.



EVELYN MARIE ROCHA

67 Martello Street East Providence, R.I.  
Stunt Night 1, 2, 3; W.R.A. 1, 2, 3, 4; F.T.  
A. 1; Newman Club 1.



ELIZABETH ANNE RODERICK

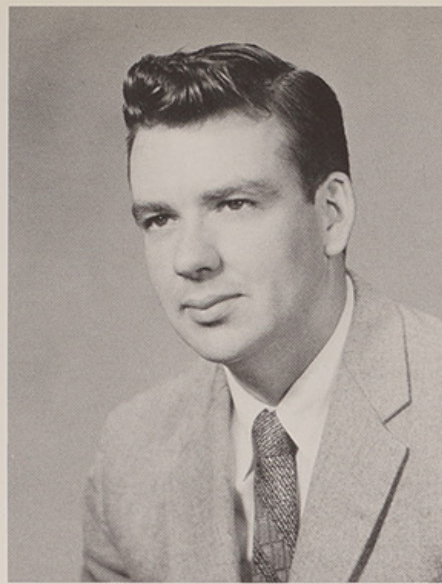
124 Gibbs Avenue Newport, R.I.  
Kappa Delta Pi 3, 4; Choir 2; Stunt Night  
2, 3, 4; Scenery Chairman 2, 3; W.R.A. 1,  
2, 3, 4; Newman Club 1, 2, 3, 4; May Day 1.





CAROL SUZANNE ROGERS

95 Woonsocket Hill Road, Woonsocket, R.I.  
Choir 2, 3; Stunt Night 3; W.R.A. 1, 2, 3,  
4; Newman Club 1, 2, 3, 4.



JOHN M. SADLIER

32 Sterry Street Pawtucket, R.I.  
Varsity Soccer 2, 3; Basketball 2, 3; Varsity  
Track 2; Stunt Night 1, 3, 4; M.A.A. 1, 2,  
3, 4.



ELIZABETH A. SMITH

18 Wood Street Warren, R.I.  
President's List 3; Anchor 3; Stunt Night  
1, 2, 3, 4; I.R.C. 3; W.R.A. 1, 2, 3, 4; New-  
man Club 4; May Day Queen's Court 1, 2,  
3; Sophomore Hop Committee 2; Bond Rally  
3; Daisy Chain 2.



DOROTHY ELLEN SCANLON

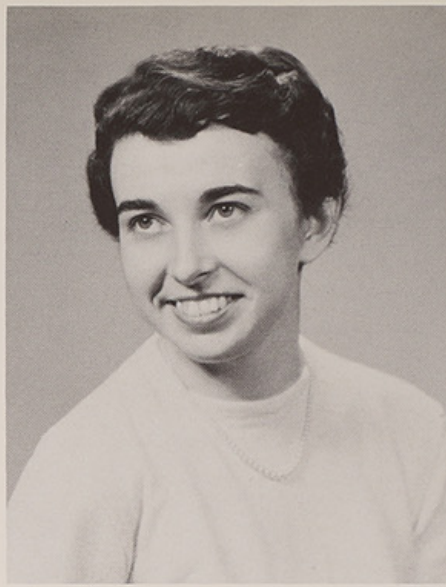
16 School Street Slatersville, R.I.  
Kappa Delta Pi 3, 4, Publicity Chairman 4;  
Anchor 1; Dramatic League 1, 2, 3, Alpha  
Psi Omega 2, 3, Secretary 3; Stunt Night Co-  
Chairman 4; Sophomore Hop Committee 2;  
May Day 1, 2, 4; Student Council Dance  
Committee 4.



MANUEL RICHARD SILVA

31 Pike Street West Warwick, R.I.  
Basketball 2; Stunt Night 4.





PAULINE SYLVESTRE

81 Waverly Street Providence, R.I.  
Stunt Night 3; International Relations Club  
3; Newman Club 2, 4; May Day 1.



BEVERLY ANN TABER

18 Crest Road North Smithfield, R.I.  
W.R.A. 1, 2, 3, 4; *Ricoled* Literary Editor  
4; Canterbury Club 1.



PATRICIA SWANSON

17 Surf Drive Bristol, R.I.  
W.R.A. 1, 2, 3, 4.



K. LOUISE TERWILLIGER

91 Abbey Avenue Gaspee Plateau, R.I.  
Kappa Delta Pi 3, 4, Vice-President 4; An-  
chor 1, 2, 3, News Editor 3; Dramatic  
League 2, 3, 4, Make-up Chairman 3; Stunt  
Night 1, 2, 4; W.R.A. Treasurer 3; Hazing  
Committee 3; Sophomore Hop Committee  
2; Cap and Gown Day Committee 4; May  
Day 1; Assembly Committee 4; Cheerleader  
2, 3, 4; Marshall 2, 3; Daisy Chain 2; Alpha  
Psi Omega 4.



PATRICIA ANN TOOHEY

22 Berlin Street Providence, R.I.  
Student Council Representative 4; *Ricoled*  
Literary Staff 4; Stunt Night 1, 2, 4, Co-  
Chairman 4; Eastern States Conference 2;  
Newman Club 1, 2, 3, 4, Executive Board 2, 3,  
4, Recording Secretary 3, Convention Dele-  
gate 2; May Day 1; Hazing Committee 3;  
Sophomore Hop Committee 2; Class Day  
Committee 4; Student Council Dance Com-  
mittee 4; Senior Vespers Committee 4; Com-  
mencement Ball Committee 4; Commence-  
ment Committee 4.





CARMELITA TRIGO

585 Providence Street Warwick, R.I.  
Choir 1, Librarian 2, 4; Student Council 2, 3, Treasurer 3; Social Committee Chairman 3; Dramatic League 1; Stunt Night 2, 3, 4; Ski Club 1, 2; Newman Club 2, 3, 4, Corresponding Secretary 4; May Day 1, 3; Eastern States Conference 3; Court of All College Ball 3; Chairman Junior Prom Committee 3; Commencement Committee 4; Daisy Chain 2.



DOLORES PRETE VACCA

1822 Mineral Spring Avenue North Providence, R.I.  
President's List 1, 2, 3; Kappa Delta Pi 3, 4, Treasurer 4; Class Secretary 1; W.R.A. 1, 2, 3, 4.



MARY PATRICIA WELCH

68 Read Avenue Saylesville, R.I.  
*Who's Who Among Students in American Colleges and Universities* 3; Student Council President 4, Representative 1, 3; Class Secretary 2; Big Eastern States Conference 2; Sophomore Hop Committee 2; Student Council Dance Committee 1, 3, 4; Junior Prom Committee 3; Little Eastern States Conference 4; Newman Club 1, 2, 4, Membership Chairman 2; Stunt Night 1, 2, 4; May Day 1; Daisy Chain 2.



SARA VALLONE

54 Poppy Drive Cranston, R.I.  
President's List 3; Kappa Delta Pi 3, 4.



RAE E. WEST

202 Alabama Avenue Providence, R.I.  
S.N.E.A. 1; W.R.A. 1, 2, 3, 4; Stunt Night 1, 2, 3, 4; Newman Club 1.





JAMES S. WHITAKER

648 Lincoln Street      Seekonk, Mass.  
Class Vice-President 4; *Ricoled* 4; Soccer 2, 3, 4, Co-Captain 4; M.A.A. 2, 3, 4; Cap and Gown Committee 4.



PATRICIA MARIE WILDPRETT

22 Hartford Place      Warwick, R.I.  
Anchor Staff 1, 2, 3, 4, Feature Editor 3; Class Treasurer 4; Stunt Night 1, 2, 4, Costume Designer 2; W.R.A. 1, 2, 3, 4, Vice-President 3, Treasurer 2; *Ricoled* 4, Art and Photography Editor; Newman Club 1, 2, 3, 4; Social Committee 2; Cheerleader 2, 3, 4; May Day 1, 2, 4, Costume Designer 4; Daisy Chain 2; Marshall 2, 3; Usher 1, 2; Modern Dance Club 2; Sophomore Hop Dance Committee 2; Junior Prom Committee 3.

BETTY ABRICH

257 Rochambeau Avenue      Providence, R.I.

MARJORIE E. MARCANTONIO

4 Count Fleet Avenue      Warwick, R.I.

ELSIE HABERCOM

1329 Jefferson Blvd.      Greenwood, R.I.

JOAN MARILYN PYNE

135 Garden City Drive      Cranston, R.I.

JOSEPH LAVIGNE

1077 Main Street      West Warwick, R.I.

ROBERT STONE

15 East Drive      Providence, R.I.

GERALD E. TETREAU

153 Harrison Street      Pawtucket, R.I.



# SENIOR CLA

On September 10, 1954, a frightened but hopeful class entered R.I.C.E. A new world was opening to us and we were unaware of the many things that were to follow. After our meeting with our sister class, the Juniors, we felt even more lost. Remember the first week of hazing — those heavy bricks and the tiny Freshman caps we wore?

That first year we became acquainted with "real" college life — its studies, clubs, activities, and sports. Our first project at the college was campaigning for the bond issue to construct a new campus. Our first big event as a class was Stunt Night. It is always an exciting time and although we didn't win we enjoyed presenting our version of a carnival.

Christmas vacation and mid-year exams crept up bringing us the realization that the first semester had been successful.

The second semester was no less difficult nor exciting and by then we felt we really belonged. We helped make the May Day activities on the State House lawn gay by rendering many folk dances. Commencement came closer and we watched the Seniors excitedly as they prepared for graduation, knowing that someday we would be doing the same.

Summer passed quickly and soon it was September. We returned as Sophomores with a feeling of belonging and importance as we chose our electives. We entered our own particular fields of education with Elementary majors far outnumbering English-Social and Math-Science.

Our first special event was the Sophomore Hop over which our own Sophomore queen ruled. The theme was Paris, with the auditorium set up to look like a sidewalk cafe complete with tables, chairs, and Toulouse-Lautrec. Exciting, wasn't it?

The year continued with the daily routine of classes, mid-term exams, vacations, dances, sports events. Stunt Night was a highlight of the year, when our skit was Santa's Workshop. It was fun and we took second place!

The May Day event was held and the queen kept secret until the last minute. Although a few of us participated, most of us were content to watch. We took an active part in Class Day as thirty Sophomore girls dressed in white, paraded on the State House lawn carrying the Daisy Chain.

As Juniors, we eagerly, but with some doubt as to our capabilities, prepared for our first experiences in the classroom — Participation.

There was also a feeling of importance on achieving the status of being a sister class to the incoming Freshmen. As it turned out we were no more lenient nor sympathetic than were our own Junior sisters as the Vigilantes lurked



# SS HISTORY

behind every corner and door waiting to snare an unsuspecting Freshman. It may probably be supposed that the Class of 1960 will never forget or forgive us for it.

The annual Stunt Night, having been moved up to second semester, was awaited with varying degrees of calmness and although we can claim no honors, our skit, Mopey Dick, was original.

By this time, half of our class left for a period of Responsible Teaching and those that stayed behind continued to carry on class business, such as arranging the Junior Prom which was held in May at Rhodes Annex. For this brief evening, we were together again enjoying a feeling of unity.

September! Our very last year! The class still divided, but wiser and looking more professional every day, we found that teaching was a reality and that within a year we would be responsible for our own classrooms.

Dances, parties, and sports helped to break up the academic studies. Mid-year exams passed and at last our class was re-united. In honor of this event a special Senior Breakfast and Faculty Tea were held in order that we might renew acquaintances and meet the faculty on a social level.

A new innovation at R.I.C.E., Winter Weekend, proved to be highly successful and exciting. Friday night started the weekend rolling with our annual Stunt Night. Under the usual cloak of suspense, we planned and practiced for our own interpretation of "Cinderella." We had fun doing it and we were greatly disappointed when the judges could not see our genius, and awarded us a mere second place. The Faculty-Student cage ball game proved delightful to watch on Saturday afternoon and ended in plenty of time for us to dress for the All College Ball. The highlight of the evening was the crowning of a senior as All College Girl. Sunday afternoon brought with it jazz of all kinds, as we sat in the Henry Barnard auditorium listening to the tops in progressive jazz bands. Monday morning a weary bunch dragged its way through the halls of R.I.C.E. still reliving and remembering the best weekend of many a year.

In May we embarked on the last phases of college life. Garbed in gowns we officially received our caps and felt a step closer to the Big Day. Afterward we celebrated with a special Cap and Gown dance.

May Day held a very important place in our hearts in that spring of 1958, for we as seniors organized and presided over the festivities on the State House lawn. Every eye strained and every head turned as we looked over the long procession of the court to discover who had been chosen Queen.

June finally arrived and with it Senior Vespers, the Prom, Class Day, Commencement, and the feeling of achievement. Loyal to our Alma Mater, we were united in spirit, purpose, and direction, standing on the threshold of the door to the beginning.





### FIRST SEMESTER

L.-R.: Pat Wildprett, Treas.; Bob Berlam, Pres.; Gail Brady, Sec.

## SENIOR CLASS OFFICERS



### SENIOR COMMITTEES



### WHO'S WHO

Front Row: E. Goselin, A. Cornell, P. McDole, M. Welch, J. Dodd.

Back: B. Berlam.

Not Shown: A. Belanger, J. Palmer, J. Blanco, G. Bilodeau.



## SENIOR CLASS OFFICERS



### SECOND SEMESTER

L.-R.: G. Brady, Sec.; B. Berlam, Pres.; P. Wildpret,  
Treas.; B. Holihen, Vice-Pres.



Seated, L.-R.: P. Toohey, M. Kenny, B. Gose-  
lin, P. Wildpret, B. Burke. Standing: B.  
Holihen, L. Terwilliger, P. McDole, G.  
Brady, D. Scanlon, C. Casey, J. Dodd, M. P.  
Welch, A. Cornell.

## SOCIAL COMMITTEE CHAIRMEN

Front, L.-R.: L. Terwilliger, C. Casey.  
Rear: B. Goselin, B. Holihen.











## UNDERCLASSMEN



JUN

CLASS O



### FIRST SEMESTER

Front, L.-R.: D. Babbitt, Pres.; W. Crocker, Treas.;  
J. Wuerker, Sec. Rear: J. Prata, E. Spencer, Co-Ch.  
Soc. Com.



Front, L.-R.: C. Heywood, M. Boyd,  
A. Trainor, P. McVey, P. Weeple,  
M. McHugh, A. Murphy, L. Rich-  
ards, B. Stewart. Rear: D. Wilson,  
A. LeClaire, A. Hobson, J. Had-  
field, R. Vallely, A. Cahill, T. Jarosz,  
M. Carmody, L. Norton, J. Doyle,  
D. Fontaine, C. Venable.



# IOERS

# FFICERS

## SECOND SEMESTER

Front, L.-R.: E. Davis, Vice-Pres.; E. Riley, Treas.;  
L. Norton, Sec.; D. Babbitt, Pres. Rear: E. Spencer,  
J. Prata, Co-Ch. Soc. Com.



Front, L.-R.: C. Cherms, M. Brady,  
C. Carter, E. Spencer, S. Laffan, S.  
Gallup, J. Wuerker. Rear: I. Suro-  
wicz, J. Prata, J. Paparelli, C. Pal-  
misciano, J. Johnson, E. McAleer.







Front, L.-R.: N. Paine. Rear: S. Lombardi, K. Kenney, J. McDonald, A. Spas, F. Mitchell, C. Vitale, A. McMillan.



Front, L.-R.: J. Walsh, N. Gontarski, M. Canis, J. Burns.  
Rear: B. Swanson, M. Brazeil, B. O'Loughlin, P. Ucci, C. Zoglio.





# JUNIORS



Front, L.-R.: C. Hulcup, C. Heywood, A. Marino, M. Maynard, R. Oberg. Rear: E. Riley, A. Corsair, W. Crocker, F. Rao, J. Caranci, A. Feeley, D. Babbitt.



Front: J. Pangborn, M. Gilmartin, E. Davis.  
Back: N. Newton, G. Todd.





CLASS  
OFFICERS

Front: N. Rogers, Sec.; J. Menard, Pres.; E. Neary, Treas.  
Back: J. Aguiar, Vice-Pres.; M. Hart, Social Comm.; T. Drury,  
Social Comm.



Front, L.-R.: E. Anderson, B.  
Wilkening, A. McLaughlin, J.  
Mulligan. Rear: D. Nelson, E.  
DeMoranville, T. Eastham, L.  
Hart.





# SOPHOMORES



Front, L.-R.: J. Louth, H. Kearns, H. Lowey,  
E. Neary, M. Kaloostian, M. Monaghan.  
Rear: J. Proulx, T. Drury, D. Welch, D.  
Masi.



Front, L.-R.: P. McCabe, D. Mc-  
Donald, C. Devaney. Rear: G.  
Clarke, M. Clabby, S. Gurnick,  
G. Croce, J. Reposa.





Front, L-R.: L. Pitocchelli, M. Stanton, E. Guay, D. Caranci, C. Solhoff, K. Thompson, J. Smith. Rear: A. Pascale, A. Taraborelli, J. Menard.

## SOPHO

L-R.: A. Maginn, D. DiCola, P. McConnell, M. O'Neill, M. Duhamel, L. Ryan, D. Heslin, P. Coughlin.







Front, L.-R.: M. Munson, J. Fontes, E. Moreau, A. Venagro, N. Rogers, G. Davis, J. Brown. Rear: H. Morally, P. D'Amico, P. Hughes, C. Horan.

## MORES

Front, L.-R.: S. Fairhurst, P. Micone, R. Costantino, L. Spacagna, M. Grady. Rear: B. Camara, J. Fratiello, N. Swindel.







# FRESH

Front, L-R.: D. Lamontagne, P. Waterman, R. Steere, M. Worna, D. Walker.  
Rear: A. Plante, R. Silva, C. Wheeler, P. Saunders, W. Miller.



Front, L-R.: S. Ettliger, E. Cairo, L. Nelson, A. Nerney, I. Polofsky. Rear: M. Frechette, G. Artamian.



# MEN



Front, L.-R.: S. Cunha, B. Danka, M. Case, L. Desautell, B. Egan. Rear: A. Dawson, J. D'Agostino, E. Collins, M. Costello, A. Daignault.



Front, L.-R.: R. Greene, M. Howe, A. Reynolds, V. Dilorio, J. Mahoney. Rear: B. Smith, B. Jeffrey, K. LaSalle, K. Berwick.





Front, L.-R.: J. Hunt, C. Guiliano, R. Gagnon, M. Griffin, M. Hammer. Rear: E. Holt, J. Fontaine, J. Flynn, F. Gallant, S. Hadfield, L. Gustafson.

## FRESH



Front, L.-R.: B. Bilotte, J. Barry, P. Barry, M. Boyajian, C. Augusto. Rear: J. Vileno, A. Orsini, G. Place.





Front, L-R.: B. Kinoian, E. Paul, J. MacBeth, R. McConville. Rear: S. Neary, J. Petrarca, C. McDonald, N. Newton.

## MEN

Front, L-R.: J. Maynard, V. Malo, N. Murray, G. Petrin. Rear: E. Klenota, F. Pierce, J. McGarrity, G. Munroe.











**CLUBS  
and  
ORGANIZATIONS**



# STUDENT COUNCIL



Standing: L.-R.: C. Wheeler, D. Babbitt, J. Dodd, J. Reposa, A. LeClair. Seated: L.-R.: A. Corsair, P. McDole, S. Bousquet, M. Welch, P. Smith, P. Toohey, A. Feeley, J. Louth.

Student Council is the executive branch of the Student Government which directs all activities, other than academic, affecting student welfare.

It is the organ of communication between the student body and the administration and faculty.

Each class elects three representatives to Student Council, which is advised by Dean Dorothy Mierzwa.

## FIRST SEMESTER OFFICERS

President ..... Mary Pat Welch  
 Vice-President ..... Aline Belanger  
 Secretary ..... Jean Louth  
 Treasurer ..... Ann Feeley

## SECOND SEMESTER OFFICERS

President ..... Mary Pat Welch  
 Vice-President ..... Raymond Anderson  
 Secretary ..... Jean Louth  
 Treasurer ..... Ann Feeley



# KAPPA DELTA PI



Front: R. Pinto, L. Terwilliger, M. Kenny, D. Vacca, B. Goselin. Rear: E. Burke, D. Scanlon, A. Cornell, E. Davis, N. Pollock, D. Babbitt, M. Brazeil, S. Laffan, M. Trombi, E. McAleer, A. Corsair, K. Kenney.

Kappa Delta Pi is a national honor society in education, our own chapter, Epsilon Rho, being established in 1944. To become a candidate one must be in the upper quintile of his class and contribute in some way to extra-curricular activities. The organization is composed of juniors and seniors possessing these qualifications.

The purpose of the society is to enrich the lives of its members by having prominent people in various fields speak at the monthly meetings, to promote education, and to keep abreast of current happenings in the educational field. Among the organization's social functions are the Initiation Banquet and the Christmas Dance.

The officers are: Rachel Pinto, President; Louise Terwilliger, Vice-President; Maureen Kenny, Secretary; Dolores Prete Vacca, Treasurer.



# STUDENT



First row, L-R.: J. Doyle, J. Wuerker. Second row: C. Hulcup, A. Corsair, A. Murphy, P. Smith, A. Feeley, P. Weeple, M. Carmody, R. Valley, J. McPhillips, M. Leonard. Third row: A. Cahill, M. Trombi, L. Nelson. Fourth row: R. Hackett, A. DeAndrade, D. Simonson, E. McAleer, A. LeClair, C. Vitale, R. Joseph, K. Kenney, A. Hobson, C. Vanable, J. McGwinn, E. Davis, G. Monroe, D. Babbitt.



# NATIONAL EDUCATION ASSOCIATION

Student N.E.A. holds bi-monthly meetings with the purpose of furthering the interests of young people in the field of teaching and of aiding them in becoming more successful teachers. These purposes are accomplished through informal panel discussions, guest speakers in the field of education, movies, and special projects.

This year S.N.E.A. planned a varied program on vocational schools, the driver education training program, and the slow learner. A field trip was taken in January to the School for the Deaf.

Each year the organization's main social event is a joint Christmas Dance sponsored with members of Kappa Delta Pi, the National Honor Society at R.I.C.E.

Officers, First row, L.-R.: C. Vanable, Second V. Pres.; J. Wuerker, Pres.; R. Valley, First V. Pres. Second row: R. Hackett, Sec.-Treas.







## SKI CLUB

First row, L-R.: A. Hobson. Second row: A. Feeley, M. E. Kaloostian. Third row: J. Doyle, D. Welch, K. Kenney. Fourth row: M. Fullam, P. Smith, E. Leonard, C. Hulcup. Fifth row: E. Anderson, M. Grady, A. McGinn, A. Murphy. Sixth row: E. Slater, A. Murphy.

The Club has had two mountain trips this year both of which proved exciting. On January 25th, the Ski Club took advantage of the mid-semester recess to journey to the Round Hearth Dormitory in Stowe, Vermont. Twenty-five members enjoyed a week-end of skiing and fun. The Ski and Outing Club holds its meetings on the second and fourth Tuesday of each month.

The officers of the Club are:

President.....	Bob Records
Vice-President.....	Ed Slater
Secretary-Treasurer.....	Katherine Kenney
Trip Chairman.....	Markie Trainer



# ANCHOR STAFF



ANN LESPERANCE  
Editor-in-Chief

The Anchor is the student newspaper which is published monthly. It reports on academic, social, sports, and other events which may be of interest to the readers.



The editors of the Anchor are:

Editor-in-Chief.....	Ann Lesperance
Associate Editor.....	Marguerite Brazeil
Make-up Editors.....	Louisa Henault Sheila Laffan
News Editor.....	Barbara Swanson
Feature Editor.....	Beverly Crocker
Typing Manager.....	Alice Corsair
Business Manager.....	Jacquelyn Fontes
Sports Editor.....	Carol Hulcup
Photographer.....	Gerald Schooley
Faculty Advisor.....	Ruth Altmann

Front: B. Swanson, S. Laffan, A. Corsair,  
M. Canis, C. Hulcup. Rear: M. Brazeil,  
Assistant Editor; E. August, J. Aguiar, P.  
Kanarian, G. Schooley, B. Swanson.





Officers, First row, L-R.: S. McGurn, Program Chairman; M. McCaffrey, Pres.; P. Ucci, Corr. Sec. Second row: A. Pascale, Rec. Sec.; R. Hackett, V. Pres.; S. Laffan, Treas.

## DEBATING SOCIETY

While many of the organizations at R.I.C.E. harbor occasional arguments, the one club that specializes in them is the Debating Society. These disagreements are not without thought, however, but rather lead to debates based on sound logic and backed by proof.

Debating is an important activity for prospective teachers because it develops many qualities that a teacher needs, poise, confidence, clarity of expression, and logical thinking.

Our debaters test their oratorical and analytical skill in contest with debaters from other colleges and universities. They participate in regional and national tournaments.



### DEBATING SOCIETY MEMBERS

L.-R.: M. Frechette, S. McGurn, P. Ucci, M. McCaffrey, R. Hackett, S. Laffan, A. Pascale.



# INTERNATIONAL RELATIONS CLUB

The International Relations Club helps members of the College develop new ideas on world affairs. Movies on current events and world problems are often shown at the monthly meetings. Nationally recognized speakers who are prominent in the field of international relations and foreign students who are in the country as exchange students are frequent guests at Club teas and coffee hours. Highlights of the year include the club's annual banquet.



Officers, First row, L.-R.: J. Prata, Pres.; A. Murphy, V. Pres.  
Second row: J. McGwinn, Treas.; P. Weeple, Sec.



First row, L.-R.: K. Kenney, R. Valley, A. Corsair, A. Murphy, P. Weeple, M. McHugh, M. Gilmartin, C. Hulcup, M. Wurafic, J. Prata, J. McGwinn, N. Paine. Second row: P. Ucci, A. Feeley, C. Vanable, E. McAleer, A. Hopkins, A. Hobson.



# CHRISTIAN ASSOCIATION

The Christian Association is one of the newer college organizations. Meetings are held twice a month during which students and faculty members, of all faiths, get together and discuss religious problems and how they pertain to other areas of their professional, social, and family lives. A brief devotional service usually rounds out the evening's program.



## CHRISTIAN ASSOCIATION MEMBERS

First row, L.-R.: B. Stewart, C. Chermes, R. Marsden, D. Babbitt, G. Schooley, C. Vanable, J. Wuerker, W. Crocker. Second row: C. Holgate, N. Newton, J. Briggs, G. Monroe, E. Davis, F. Baker.



Officers, L.-R.: C. Chermes, Sec.; R. Marsden, Vice-Pres.; D. Babbitt, Pres.; G. Schooley, Treas.



# MODERN DANCE CLUB

The Modern Dance Club, which is a fairly new organization at R.I.C.E., meets every Wednesday night. The purposes of the club as stated in its constitution are: 1. to offer students opportunity for creative dance; 2. to foster standards of performance, appreciation and understanding of the dance as an art; 3. to become a performing group.

Some of this year's activities include master dance concerts, an all day program at Connecticut College, and work on May Day.



First row, L-R.: G. Davis. Second row: M. Dufault, J. Fanning, R. Oberg, P. Hughes, C. Zoglio, M. Maynard, E. Moreau, A. Hopkins, E. Hartington, A. Rutkiewicz.



Officers, First row, L-R.: E. Hartington, Treas.; R. Oberg, Sec.; C. Zoglio, Pres. Second row: M. Maynard, Vice-Pres.





First row, L.-R.: G. Brady, E. Anderson, J. Mulligan, M. E. Kaloostian, A. McGinn, D. Welch, J. Brown, M. Grady, P. Ucci, P. McConnell. Second row: P. Wildprett, P. Coughlin, S. McGurn, F. Surowiec, P. Hughes, J. Fratiello, L. Ryan, D.

Heslin, G. Steiver, N. Campanella, C. Wheeler, S. Laffan. Third Row: J. Doyle, D. Andrews, T. Drury. K. Devaney, J. Lussier, E. Neary.

The Newman Club of R.I.C.E. is an organization for Catholic students and is affiliated with both the New England Province Association of Newman Clubs and the National Newman Club Federation. The purpose of the club is to unite Catholic students in furthering themselves religiously, intellectually, and socially.

With this three-fold purpose in mind, the Club sponsors, each year, a Communion Breakfast, Day of Recollection, and Thanksgiving and Christmas



# N CLUB



First row, L.-R.: Hope Day, A. Murphy, M. McHugh, M. Carmody, R. Vallely, P. Weeple, C. Vitale, E. McAleer, A. Hobson, P. Coderre, A. Dawson. Second row: K. Kenney, L. Hart,

M. Clabby, G. Croce, S. Army, A. LeClaire, A. Corsair, N. Paine, M. Fullam, E. Slater, E. Kelly, B. Swanson, T. Stewart. Third row: P. D'Amico, R. Constantino, N. Rogers.

drives for the needy.

In addition to province and national meetings, local meetings are held twice a month on the second and fourth Monday alternating between talks by the Club Chaplain, Reverend David J. Coffey, and addresses by guest speakers.

The officers of the Club are: Henry P. Guillotte, President; Marguerite Brazeil, Vice-President; Dorothy Welch, Recording Secretary; Barbara Swanson, Corr. Secretary; Gerald Bourgeois, Treasurer.



# CHOIR

The Choir, which is composed of students from all classes, meets once a week. During this meeting they prepare for their two annual concerts — the Christmas Concert and the Spring Concert. The Choir also sings at Chapel and Convocations. Miss Gertrude McGuingle is director and Miss Rita Bicho is the accompanist.

## OFFICERS

President.....Betty Ann Goselin  
Vice-President.....Cynthia Heywood  
Secretary-Treasurer.....Liz August







Front: A. Dawson, E. Kelley, P. Coderre, E. Holihen, M. Carmody, C. Horan, E. Goselin. Rear: E. Rinaldi, D. Beauschemine, G. Schooley, N. Pollock, E. McAleer, N. Paine, P. D'Amico, E. August, E. Burke.







First row, L-R.: S. Thompson, E. Moreau, E. August, L. Terwilliger. Second row: M. Quinn, A. Feeley, A. Murphy, E. Gallogly, M. Carmody, R. Valley, R. Marsden, R. Weeple, A. Cahill. Third row: G. Schooley, A. Corsair, C. Zoglio, J. Menard, J. Doyle, B. D'Amico, L. Hart, C. Vanable, E. Kelly, J. Brown, J. Fontes, D. Babbitt, J. Vanni.



OFFICERS, Front, L-R.: A. Corsair, Sec.; E. Gallogly, Pres.; A. Murphy, V. Pres. Rear: C. Zoglio, Treas.



# THE DRAMATIC LEAGUE

Membership in the Dramatic League is open to any student who fulfills the requirements set forth in the constitution of the Club. Participation may involve acting or work on any of the various committees through which the Club functions. These include such fields as scenery, properties, costumes, make-up and ticket distribution. One of the highlights of this year was the presentation of Graham Greene's "The Potting Shed."

Dramatic League members may be elected to Mu Rho Cast of Alpha Psi Omega, the National Honorary Dramatic Society. To qualify for this distinction a member must accumulate fifty credit points for acting, directing, workshop productions, or committee work, and must be approved by the Alpha Psi Omega membership committee who judge the candidate on the basis of character, personality, and accomplishment.

## ALPHA PSI OMEGA

Front: R. Vallely, D. Babbitt, P. Weeple, L. Terwilliger, A. Murphy, J. Brown, E. Kelly, C. Zoglio. Back: J. Bray, A. Cahill, A. Corsair, H. Day, G. Schooley.





# CANTERBURY CLUB



## OFFICERS

L.-R.: C. Vanable, Vice-Pres.; M. Ohta, Sec.-Treas.; E. Davis, Pres.

The Canterbury Club at R.I.C.E. is an organization for the Episcopal students of the college and for all who are interested in the church's work. It is part of a nationwide organization, the club holding many joint meetings with Brown, Pembroke, R.I.S.D., and U.R.I.

The Club meets on the second and fourth Wednesday afternoon of each month with the Reverend Canon Samuel J. Wylie, our college chaplain.

Our various activities include Bible study here at the college and discussion groups at Brown University. This year the club participated in its first retreat at the Miramar estate with members of neighboring Canterbury Clubs.

First row, L.-R.: B. Stewart, R. Marsden, C. Vanable, E. Davis, C. Holgate, N. Newton. Second row: G. Monroe, F. Baker, J. Briggs, D. Babbitt, C. Chermis, J. Wuerker, G. Schooley.





# FENCING CLUB

The Fencing Club is open to people who have had an introduction to fencing. Meetings are held after school for the purpose of improving skill. Some of the members of the group attended the New England Intercollegiate Fencing Tournament at Brandeis University in Boston on March first.



L.-R.: B. Swanson, Mrs. J. O'Connor.





# KAPPA DELTA PHI

Kappa Delta Phi is the educational-social fraternity of R.I.C.E. to which every regularly matriculated male in the upper three classes is eligible for membership. In the last two years the fraternity's membership has more than doubled and with this increase there has been a burst of activity in a few innovations.

This year's activities include the annual Christmas party for underprivileged children, the national fraternity convention in Boston, the undergraduate banquet, the Saint Patrick's Day Dance, the Pledge Dance, and the unprecedented Hay Ride held in the early part of the year. The latter was unusual in that the fraternity as sponsor of the affair returned some ticket money because of the overwhelming attendance. Kappa Delta Phi also sponsored a

High School Senior Open House to acquaint students with teaching in general and R.I.C.E. in particular. A new event started this year was a New Year's Eve get-together of all the fraternity brothers and their guests. Judging from the tremendous success of this event, a New Year's Eve Party for brothers will be an annual affair.

Officers of the fraternity are:

President.....	Walt Crocker
Vice-President.....	Peter Kanarian
Treasurer.....	Hank Guillotte
Rec. Secretary.....	John O'Rourke
Corr. Secretary.....	Hal Conlon
Nat. Representative.....	John Palmer
Chaplain.....	Tony Marino

## THE ANNUAL CHRISTMAS PARTY





Skoal!





# 1958



ELIZABETH GOSELIN  
Assistant Editor



JUDITH DODD  
Make-Up Editor



CAROLYN CAPRON  
Business Editor



PATRICIA WILDPRETT  
Photography Editor

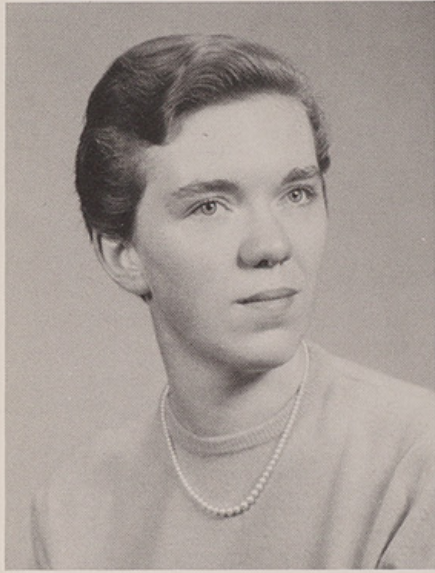




# RICOLED



ELIZABETH BURKE  
Editor-In-Chief



BEVERLY TABER  
Literary Editor



ELIZABETH HOLIHEN  
Typist



JAMES WHITAKER  
Sports Editor







*Deadline*

No errors, please!





*Fever*



A good laugh











# SPORTS



# SOCCER

## 1957-58 SEASON

The R.I.C.E. soccer team of 1957 had a fairly successful season. After losing two close games, the team turned on the steam and buried Bridgewater, Conference champs for three years, with a 3-0 shutout. This was the best game of the year, since Bridgewater is the biggest rival. However, the Bridgewater triumph was followed closely by two 1-goal losses to Fitchburg, the finest team in the Conference, and the chance for the first R.I.C.E. championship was gone.



Front, L-R.: B. Jefferies, W. Crocker, L. Boylan, J. Aguiar, J. Fratiello, D. Andrews, T. Drury, A. DeAndrade, D. McKiernan. Rear: J. Menard, B. Berlam, J. Whitker, G. D'Amico, T. Sweeney, D. Moore, F. Peters, M. Mooradian, M. Fullam, D. Lamontagne, J. Velino, B. Layfield, Coach Brown.



Two players stood above all others in their contribution to the team's efforts. Joe Aguiar paced the offensive attack, scoring 10 goals during the season and setting up most of the other goals with his fine passing and hustle. Walt Crocker was easily the outstanding member on defense. Walt's consistent play at center half was greatly responsible for thwarting the opposition's attacks, and he contributed to the offense, as well.

However, the team's success was not attained by these two stars alone. It was a team effort all the way, with co-captain Bob Berlam, Danny Andrews, Al DeAndrade, and Mark Fulam carrying their burden of the load. Others who had a big hand in the team's success were Tom Drury, Dave Moore, Don Lamontagne, John Judge (co-captain), and Frank Peters.

A word of praise must be given our two fine goalies — Bill Layfield and Joe Menard. Both boys were inexperienced, but played a rugged, capable game in the R.I.C.E. cage. Layfield also filled in at the halfback spots and proved to be just as capable there.

The importance of an enthusiastic, understanding, and highly capable coach is often overlooked. We at R.I.C.E. are fortunate to have a man who has contributed so much to soccer at this college. The student body realizes the amount of time and effort Mr. Brown has expended on behalf of the team and is appreciative of it. We wish Coach Brown continuing success and look forward to the first championship for R.I.C.E. within the next year or two.



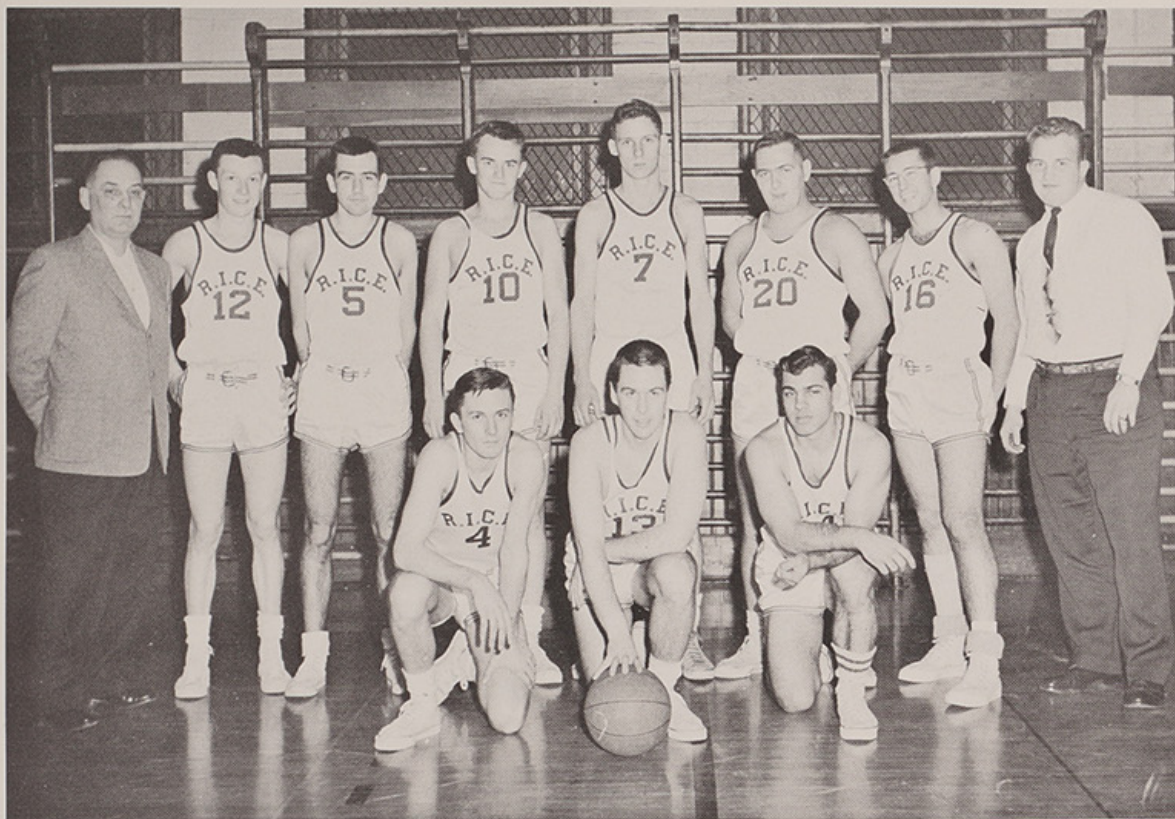
R.I.C.E. vs. Keene





# BASKETBALL

## 1957-58 SEASON



Front, L.-R.: T. Drury, F. Mitchell, A. DeAndrade. Rear: Mr. Brown, B. Generoux, R. Daignault, R. Felber, T. Eastham, M. Fullam, D. Moore, D. Lamontagne.

The R.I.C.E. basketball team had its most successful season in four years, as it finished with a record of 8 victories and 14 defeats.

The highlight of the season was a 104-93 walloping of the Boston Teachers College team. The total points scored by the Riceans in this game eclipsed the previous R.I.C.E. high by a single point. The old record was established by the 1951 team.

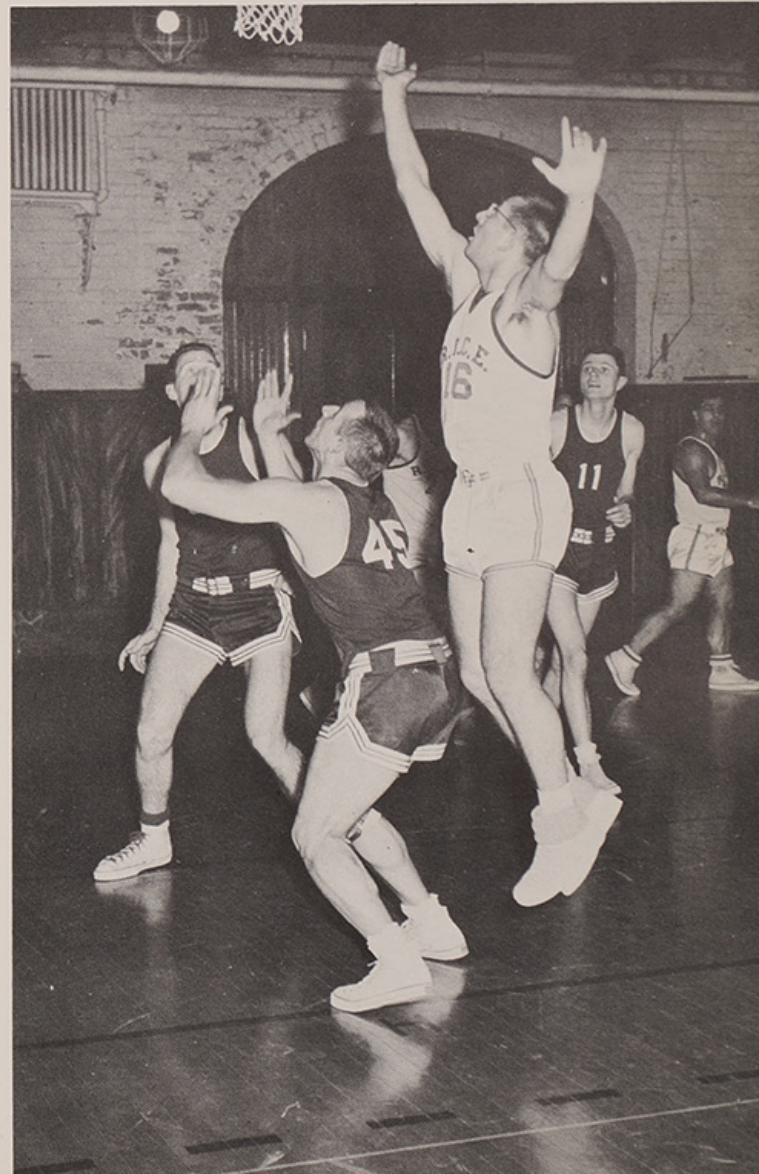
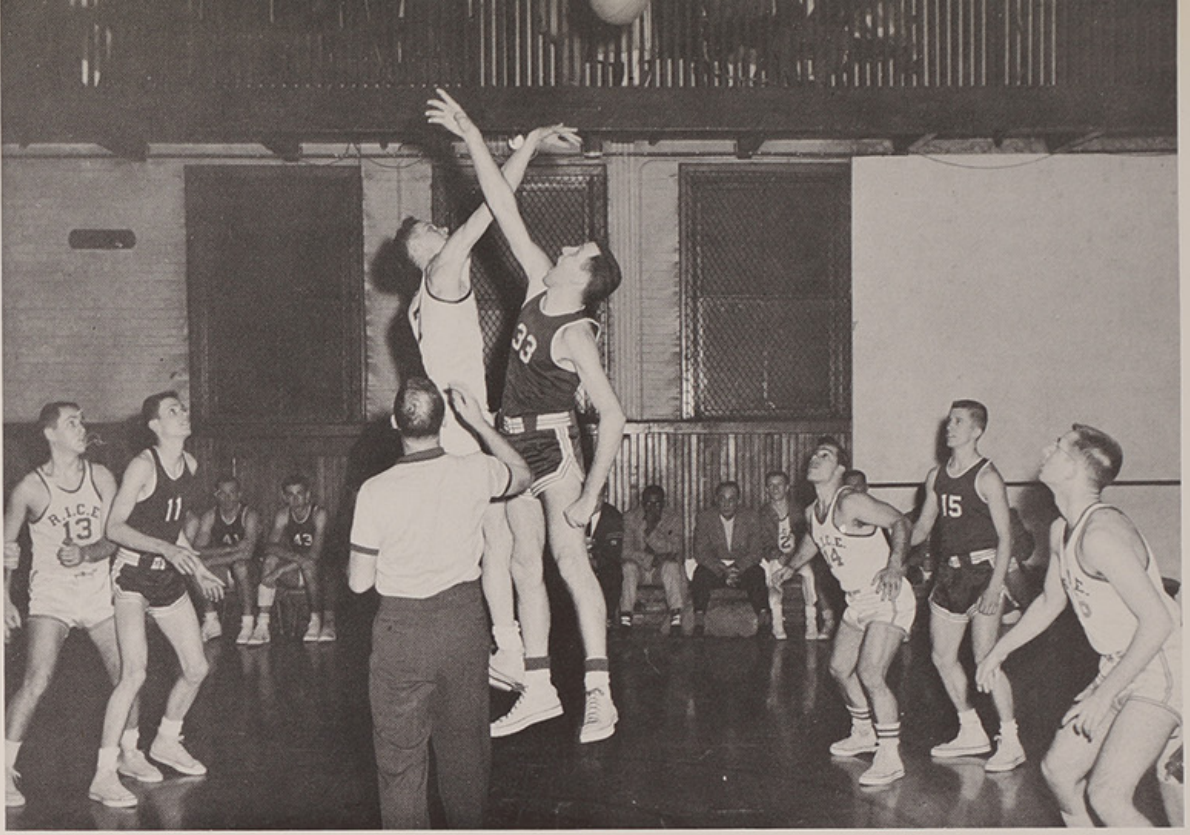
Coach Brown's five was headed by Captain Frank Mitchell, a consistently high scorer throughout the season. Captain Mitchell was ably backed by the superlative shooting of Dave Moore, Tom Eastham, Rollie Deneault, and Al DeAndrade. Other Riceans who contributed greatly to the team's success were Tom Drury, Mark Fullam, Ronnie Felber, and Tom Sweeney.

Underclassmen can look hopefully to the 1958-59 season. With every member of this year's team returning next season, the team may bring the first championship trophy to the new R.I.C.E. quarters in 1959. To add strength to next year's team, Coach Brown has some promising freshmen who could win a starting role and help to propel the 1959 team toward a championship.

R.I.C.E. congratulates its basketball team on its fine season and wishes the boys luck and good shooting for next season.

Once again, a special "Thank you" goes to Coach Robert Brown, without whose advice and coaching the team's success could not have been achieved.







# W. R. A.



OFFICERS, L.-R.: H. Kearns, Vice-Pres.; S. Army, Sec.; C. Hulcup, Pres.

## MEMBERS

First row, L.-R.: C. Wheeler, A. Finelli. Second row: M. Stanton, A. Pascale. Third row: R. Oberg, A. Corsair, H. Kearns, C. Hulcup, S. Army, P. Smith, C. Zoglio. Fourth row: G. Brady, E. Hartington, G. Davis, N. Rogers, J. Reposa, M. Maynard, P. Wildprett, R. Greene.





# M. A. A.



First row, L.-R.: D. Babbitt. Second row: T. Stewart, W. Crocker, E. Slater. Third row: R. Berlam, T. Drury, D. Andrews, J. Aguiar, J. Fratiello.

The Men's Athletic Association, under the direction of Professor Robert L. Brown, sponsors various athletic programs for the men of the college.

The purpose of this organization is to foster competitive relationships with the New England teachers colleges via the inter-collegiate competition of soccer, basketball and track.

By sponsoring intra-mural sports here at the college, the M.A.A. exerts a tremendous influence on the continued development of a fine school spirit at Rhode Island College of Education.

The following people are the officers of the M.A.A.: Walter Crocker, President; Roland Deneault, Vice-President; Edward Slater, Secretary; Stan Gurnick, Treasurer.



# CHEERLEADERS

The cheerleaders form an important part of any athletic event both at home and away games. Their blue uniforms are new this year and have won the enthusiastic approval of all who have seen them.

The squad consists of ten members, including a captain who is usually a member of the Senior Class. New members are chosen whenever vacancies occur and girls from any class may try out. Five new girls were chosen in March after the basketball season to replace the five members graduating in June.

The cheerleaders, previously independent of any organization, this year became a part of the W.R.A.





N. Rogers      P. Wildpret  
R. Joseph      C. Carter

L. Terwilliger      A. Cornell      B. Goselin  
                                 *Captain*









## ACTIVITIES



# FIZ-ED



Under the sponsorship of the W.R.A., the Fiz-Ed Feast is held every year at the conclusion of the soccer season. This event not only





# FEAST

allows students to have an enjoyable meal, but also to witness the awarding of letters to soccer members.

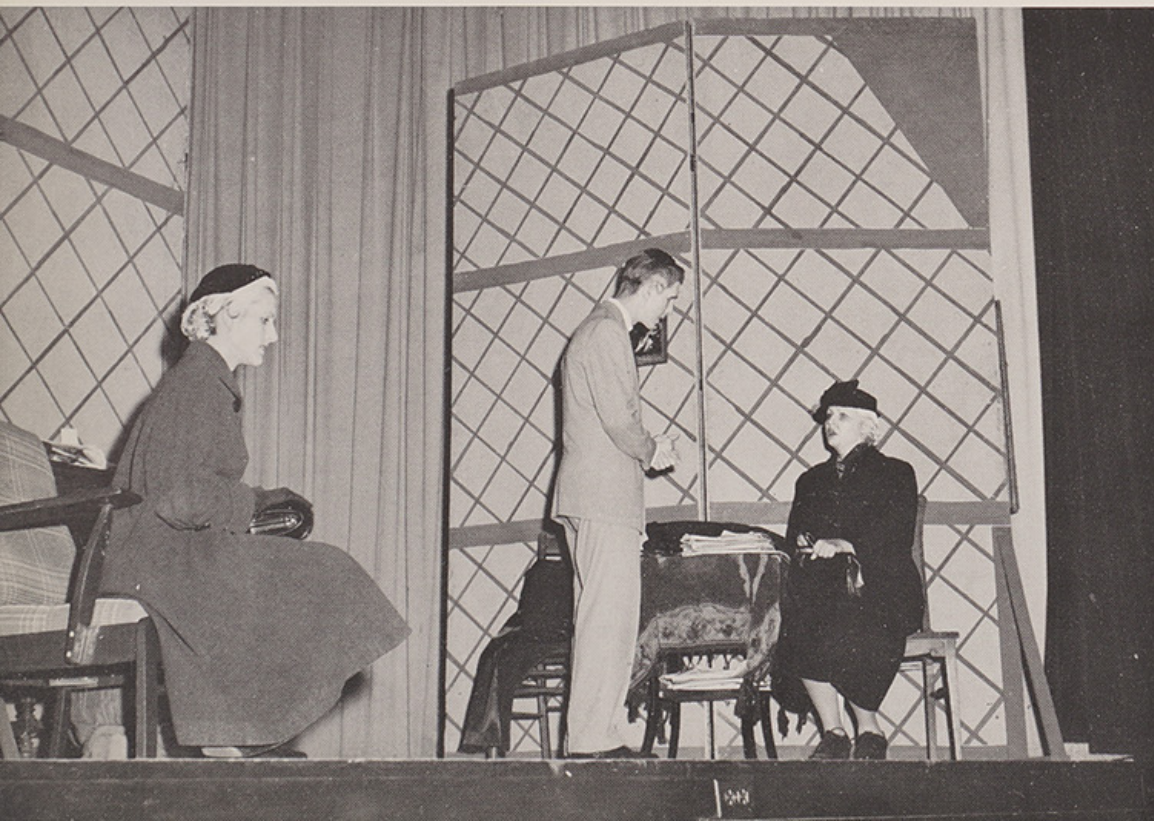




# PLAY PRODUCTION



On November 5th and 6th, the members of the Dramatic League, under the direction of Mr. Joseph D. Graham, presented "The Potting Shed" by Graham Greene. The student director was Ann Cahill.





# CHOIR CONCERT

This year, under the direction of Miss Gertrude McGunigle, the choir gave their annual Christmas Concert on Tuesday evening, December 10. The program consisted of both traditional and nationalistic Christmas music and was highlighted by a musical narration of "The Night Before Christmas."







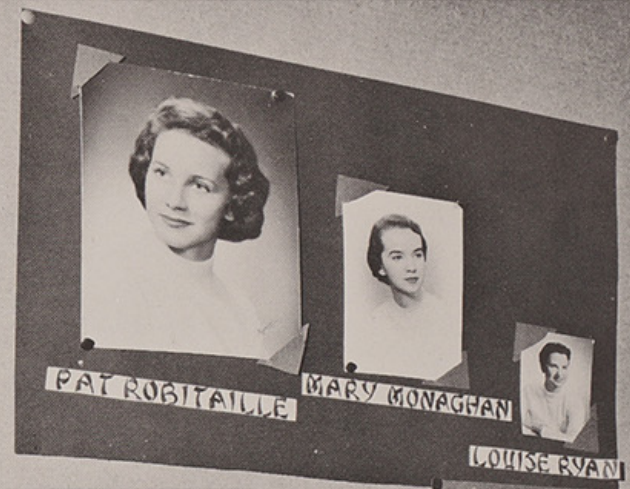
# SOPH HOP







Carol Martineau  
Soph Hop Queen





# THE CHRISTMAS PARTY

An annual event at the college sponsored by members of Kappa Delta Phi, is the Christmas Party held for underprivileged children. "Santa" distributes gifts, refreshments are served, and a good time is had by all.









# SENIOR BREAKFAST



On the first morning of the second semester, the senior class is reunited as a whole for the first time in over a year. This event, traditionally known as the Senior Breakfast, allows the returning seniors to catch up on current events and renew old acquaintances.





# SENIOR TEA



In the second semester of each year, the faculty entertains the senior class at tea. It is an enjoyable social event to which alumni members are also invited.







# Winter Weekend

Feb 7-9











# STUNT

SENIORS — "Let Your Conscience Be Your Guide"

JUNIORS — "An Illustrated Debate Between Comedy and Tragedy"





# NIGHT



SOPHOMORES — "Opus #2, Emotions Felt Stunt Night"

FRESHMEN — "The Class of 1961 Presents!?"





# ALL COLL



Mary Pat Welch  
*All College Girl*





# EDGE BALL





# KAPPA AWARDS



Raymond Anderson



Patricia Toohey

Each year the members of Kappa Delta Phi select two seniors, not previously honored, to be recipients of special awards for outstanding service to the class and college.

Ray, having participated on both the soccer and basketball teams, has served as Vice-President of Student Council. He has also given his time and effort to all Stunt Night programs and has actively participated in the Men's Athletic Association.

Pat, a member of Student Council and Newman Club, has also served on Stunt Night committees for the past four years. This year, in addition to acting as Co-Chairman of Stunt Night, she wrote the music and directed our college cheer song for which the seniors were awarded first prize.

Kappa Delta Phi is proud to announce these awards to the above seniors who are well deserving of the praise and recognition.



# ACKNOWLEDGEMENTS

*The 1958 Ricoled has tried to capture some of the spirit, enthusiasm, and character of the students at Rhode Island College of Education. I feel that our yearbook would not be complete if it did not express my appreciation to the people who have made publication of the Ricoled possible.*

To the Ricoled Staff Editors who gave so freely of their time and effort

To the Administration, Faculty and Student Body, whose suggestions and co-operation made our job easier

To Mr. James White, our faculty advisor, who provided interest and encouragement throughout the year

To Mr. Frank Millspaugh of Loring Studios, who assisted the staff in photography

To Mr. Jack Brown of O'Toole and Sons, Inc., whose help I could never have done without

And to My Parents, whose patience and understanding guided me through many trying moments

A sincere thank-you.

Elizabeth Burke  
Editor, 1958



# DIRECTORY

## CLASS OF 1959

Babbitt, Donald	55 Forbes St., Riverside	Layfield, William	309 Manton Ave., Providence
Baker, Faith	76 St. Marcel St., Woonsocket	LeClaire, Anita	153 Hoppin St., E. Providence
Barnes, Marian	Long Highway, Little Compton	Lombardy, Mary	203 Water St., Warren
Bernier, Gerald	74 Park Place, Pawtucket	MacDonald, Dawn	East Greenwich Ave., W. Warwick
Bourgeois, Gerald	177 Sayles Ave., Pawtucket	Magill, Margaret	2 Armistice Blvd., Pawtucket
Boyd, Mary	171 Bloomfield St., Pawtucket	Maloney, Roberta	270 Hillside Ave., Pawtucket
Boylan, Anne Mary	15 Pine St., Pascoag	Marine, Carol	58 Newark Ave., Providence
Brady, Claire	144 Cottage St., Pawtucket	Marino, Anthony	53 Winthrop Ave., Providence
Brady, Margaret	56 Elmwood Dr., Warwick	Marsden, Ruth	130 Eastwood Ave., Providence
Brazeil, Marguerite	237 Hartford Ave., Providence	Maynard, Marianne	164 Lafayette St., Pawtucket
Briggs, Alice	70 Brightside Ave., Conimicut	McAleer, Elizabeth	23 Stansbury St., Providence
Briggs, Jean	490 Fruit Hill Ave., No. Providence	McDonald, Ann	225 Carleton St., Providence
Burns, Joanne	302 Waldo St., Providence	McCormick, Joseph	30 Harvard Ave., Providence
Cahill, Anne	105 Bradly St., Providence	McHugh, Maureen	66 Goddard St., Providence
Canis, Mary Ann	45 Carlson Dr., Lonsdale	McMillan, Audrey	7 Nicol Terrace, Newport
Caranci, Joseph	17 Atlantic Ave., No. Providence	McPhillips, Joan	58 Belmont Ave., Providence
Carey, Janet	10 Factory St., W. Warwick	McVay, Patricia	100 Brewster St., Pawtucket
Carmody, Winifred	18 Sidney St., W. Warwick	Mitchell, Frank	112 Cross St., Central Falls
Carter, Carolyn	60 Melrose St., Cranston	Moloney, Elinore	31 Reed St., Tiverton
Casey, William	60 Robin St., Providence	Moore, David	128 School St., Central Falls
Cavanaugh, Margaret	88 Freeborn Ave., E. Providence	Murphy, Anne	106 Sumter St., Providence
Cherms, Constance	17 Congress St., Warwick	Newton, Nancy	Walcott Ave., Newport
Conlon, Harold	176 Dexter St., Valley Falls	Norton, Lillian	
Corsair, Alice	12 Ninth St., Providence	Oberg, Ruth	150 Parkside Ave., Pawtucket
Crocker, Beverly	603 Broad St., Providence	O'Loughlin, Madelyn	1221 Chalkstone Ave., Providence
Crocker, Walter	40 Burnside Ave., Riverside	Orsini, David	204 Thurbers Ave., Providence
Davis, Edith	16 Grafton St., Saylesville	Paine, Nancy	14 Beach Rd., Cumberland
Day, Hope	269 Point St., Providence	Palmiscione, Corinne	53 Greeley St., Providence
D'Amico, George	31 Bailey St., Cranston	Paperelli, Jo Ann	23 Sutton Place, Cranston
DeAndrade, Al	37 Lewis St., Central Falls	Parker, Merlyn	174 Wingate Ave., Warwick
Deneault, Roland	39 Sumner Ave., Central Falls	Peczka, Alice	84 Chaplin St., Pawtucket
Dickervitz, Richard	98 Hazel St., Saylesville	Peloquin, Feora	33 Houtmann Ave., Cumberland
DiStephano, Gene	229 Woonasquatucket Ave., No. Providence	Petsching, Alan	
DiStephano, Lois	35 Intervale Ave., No. Providence	Pezullo, Janice	42 Scenic Dr., Oaklawn
Dooley, Joan	37 Dalton St., Rumford	Plante, Robert	209 Old Country Rd., Georgiaville
Downes, Myra	Post Road, Westerly	Prata, Janet	29 Oak St., Providence
Doyle, Joanna	71 Keene St., Providence	Purcell, Barbara	64 Greenwood Rd., E. Providence
Dufault, Marilyn	22 Bradley St., Pawtucket	Quinn, Nancy	180 Lonsdowne Rd., Warwick
Eccleston, Gayle	139 High St., Westerly	Quirk, Maureen	24 Stadden St., Providence
Emerzian, Virginia	43 Longwood Ave., Providence	Rao, Frieda	174 Courtland St., Providence
Ethier, Mary	121 Ridge Rd., Georgiaville	Reilly, Hope	39 Langham Rd., Providence
Fanning, Judith	260 High St., Valley Falls	Richard, Laura	31 Stanford Ave., Providence
Feeley, Ann	127 Betsy Williams Dr., Edgewood	Rocha, Thelma	67 Martello St., E. Providence
Firth, Ann	199 Carter St., Pawtucket	Rossi, Gloria	47 Stevens Rd., Cranston
Fontaine, Doris	193 Wendell St., Providence	Schifino, Anne	76 Lyon Ave., E. Providence
Freeman, Walter	3 Regent Ave., Providence	Sgambato, Marion	23 Mowry Ave., Granitaville
Fuoco, Joseph	33 Tiffany St., Cranston	Smith, Elizabeth	27 Spruce St., Westerly
Gallogly, Eleanor	230 Vermont Ave., Providence	Smith, Patricia	2143 Elmwood Ave., Norwood
Gallup, Sabra	7 Matteson Ave., W. Warwick	Shunney, Ann	
Garvin, Emily	633 Wood St., Bristol	Shunney, Mary	
Gauthier, Paul	23 Charles St., Pawtucket	Spas, Avis	239 Bailey St., W. Warwick
Gervais, Neil	Box 186, Mapleville	Spencer, Ellen	14 Summit St., Warwick
Gilmartin, Mary	77 Edgewood Ave., Edgewood	Staknis, John	33 Salmon St., Providence
Gontarsli, Nora	79 Rosemont Ave., Pawtucket	Surowiec, Irene	31 Primrose St., Pawtucket
Goucher, Roberta	Louisquisset Pike, Lincoln	Stewart, Barbara	265 Maple Ave., Forestdale
Guillotte, Henry	20 Main Rd., No. Tiverton	Swanson, Barbara	984 Providence St., W. Warwick
Hackett, Robert	138 Woodward Rd., Providence	Thomas, Russell	
Hadfield, June	895 Hope St., Bristol	Thompson, Margaret	74 Walnut Rd., W. Barrington
Hammarlund, Judith	94 Crown Ave., Riverside	Thompson, Sheila	25 Dartmouth Ave., Riverside
Harrington, Helen	419 Armistice Blvd., Pawtucket	Todd, Gerald	3151 W. Shore Rd., Warwick
Hartington, Evelyn	11 Delmar Ave., Providence	Trainor, Marklyn	26 Summer St., Bristol
Hewitt, Barbara	575 Fair St., Warwick	Treanor, Ann	74 Mulberry St., Pawtucket
Heywood, Cynthia	West Main Rd., Little Compton	Trombetta, Joseph	804 Admiral St., Providence
Higgins, Paula	184 Calaman Rd., Cranston	Trombi, Mary (Mrs.)	
Hobson, Ann Marie	114 Radcliffe Ave., Providence	Trump, Dorothy	Arrowhead Rd., Coventry
Holgate, Carol	47 Grotto Ave., Pawtucket	Ucci, Pauline	270 Providence St., W. Warwick
Hulcup, Carol	37 Beech St., Pawtucket	Valley, Rose	4 Pemberton St., Providence
Jakobiak, Stanley	22 Lookout Ave., No. Providence	Vanable, Carolyn	24 Harvest St., Providence
James, Donald	51 Third St., Newport	Vitale, Corina	182 Academy Ave., Providence
Jaros, Theodore	234 Commonwealth Ave., Attleboro Falls	Wade, Janice	41 Seventh Ave., Woonsocket
Johnson, Joanne	58 Benbridge Ave., Lakewood	Weed, Ralph	21 Walnut St., Newport
Joseph, Roberta	30 Horton St., Providence	Weeple, Patricia	16 Norwich Ave., Providence
Kanarian, Peter	193 Sabin St., Pawtucket	Wilson, Diane	
Kenney, Bernard	280 Bay View Ave., Edgewood	Wuerker, Joan	56 Moore St., Providence
Kenney, Katherine	43 Lyndhurst Ave., Providence	Wurafic, Meryl	118 Lorimer Ave., Providence
Kenyon, Claire	Baily Hill Rd., Wyoming	Zoglio, Carolyn	24 Crowninshield St., Providence
Laffan, Sheila	878 Mendon Rd., Woonsocket		

## CLASS OF 1960

Abbenante, Marsha	390 Wellington Ave., Cranston	Army, Sharon	14 Fifth St., Providence
Aguir, Joseph	594 Wood St., Bristol	Arvidson, Carol	41 Ardoene St., Providence
Alviti, Natalie	130 Eldridge St., Cranston	August, Elizabeth	33 Briar Ave., Riverside
Anderson, Elinor	85 Oakdale Ave., Pawtucket	Baker, Nancy	213 Occupasstuxet Rd., Warwick
Andrews, Daniel	19 Tenth St., E. Providence	Bargamian, Lucy	468 Smithfield Rd., No. Providence



Barry, Anne	27 Bradford Ct., W. Warwick	Lussier, Jacqueline	11 Anstis St., Cranston
Behan, Virginia	28 Mawney St., Providence	Maginn, Ann	41 Lennon St., Providence
Best, Mary	44 West Main Rd., Portsmouth	Malley, Marjorie	150 Washington Ave., Providence
Bloomfield, Fredda	10 Brookside Dr. Cranston	Marine, Carol	58 Newark St., Providence
Boucher, Diane	152 Hopkins Ave., Johnston	Martineau, Carol	4 Arcade St., Johnston
Boudreau, Alexander	208 Sweet Ave., Pawtucket	Masi, David	65 American St., Providence
Bray, John	187 East Ave., Pawtucket	Menard, Joseph	84 Charlton Ave., Pawtucket
Brown, Ann Marie	206 Sumter St., Providence	Merette, Roberta	43 Crestwood Rd., Cranston
Brown, Judy	97 Raymond St., Providence	Michael, Richard	64 Dean St., Providence
Camara, Brenda	50 Haile St., Warren	Micone, Patricia	160 Vinton St., Providence
Capron, Susan	Putnam Pike, Chepachet	Mirarchi, Helen	83 Harold St., Providence
Capuano, Evelyn	45 Lawnacre Dr., Cranston	Molloy, Miriam	174 Sinclair Ave., Providence
Caranci, Dolores	12 Atlantic Ave., No. Providence	Monaghan, Mary Ann	697 East Ave., Pawtucket
Casey, Maureen	Pound Hill Rd., No. Smithfield	Mooradian, Moorad	61 Douglas Ave., Providence
Chesbrough, Gail	61 Urrico Ave., Woonsocket	Morally, Helen	6 Wauregan Dr., W. Warwick
Clabby, Melissa	241 Ohio Ave., Providence	Moreau, Ellen	224 Park Holm, Newport
Clark, Virginia	25 Newfield Ave., Lakewood	Mulligan, Judith	88 Englewood Ave., Pawtucket
Clarke, Grace	86 Mason Ave., Portsmouth	Munson, Marjorie	116 Mill Cove Rd., Warwick
Cohen, Bernice	33 Taft Ave., Providence	Murphy, Jane	50 Quincy St., Providence
Cordin, Betty	34 Carter St., Providence	McCabe, Mary Paula	176 Jastram St., Providence
Corp, Carol	48 Knollwood Ave., Cranston	McConnell, Patricia	156 Cypress St., Providence
Costa, Richard	14 South Brookside Ave., Centerdale	McDonald, Diane	493 Pleasant Valley Pkwy., Providence
Costantino, Ruth	45 Seneca Ave., Pawtucket	McFarland, Mary	22 Grant Ave., Cranston
Coughlin, Margaret	118 Francis Ave., Pawtucket	McGurn, Sally	110 Mulberry St., Pawtucket
Coughlin, Patricia	151 Pender Ave., Warwick	McLaughlin, Abigail	69 Marberry Ave., Pawtucket
Creta, Raymond	185 Ottawa Ave., Warwick	McMahon, Elaine	4 Lowe Ave., Warwick
Croce, Geraldine	9 Christopher St., Providence	Neary, Eleanor	30 Granger Court, Warwick
Cullinane, Catherine	228 Pleasant St., Providence	Nelson, Donna	269 Central Ave., E. Providence
D'Amico, Peter	27 Lee Ave., Newport	Nicholson, Virginia	183 Assembly Dr., Warwick
Davis, Gail	58 Lester St., Providence	Norris, Jean	30 Squantum Dr., Warwick
DeLuca, George	996 Branch Ave., Providence	Olson, Kenneth	103 Florin St., Warwick
DePace, Joanne	81 Land Pond Rd., Norwood	O'Brien, Brenda	121 Courtney Ave., Pawtucket
Destremps, Richard	46 Golden Hill St., Newport	O'Neill, Madeline	129 Pine St., Pawtucket
Devaney, Catherine	26 Carlisle St., Providence	Ouilette, Joanne	168 Balch St., Pawtucket
Diamond, Harriet	77 Harriet St., Providence	Pagano, Santine	7 Roma St., Bristol
DiCola, Delia	508 Woodward Rd., No. Providence	Parkinson, Janice	106 Oakdale Ave., Pawtucket
Drury, Thomas	295 River Ave., Providence	Pascale, Anita	171 Cumberland St., Providence
Duhamel, Madeleine	18 Bauvier Ave., Manville	Peach, Patricia	Log Rd., R.F.D. #3, Esmond
Dyer, Helen	145 Colfax St., Providence	Peacock, William	53 Central Ave., Seekonk, Mass.
Eastham, Thomas	36 Steere Ave., Centerdale	Peters, Franklin	56 Fourth St., E. Providence
Eastwood, Paul	19 Hawley St., Centerdale	Petisce, Marcella	11 Lincoln Ave., No. Providence
Egan, Michael	48 Parker St., Central Falls	Phillips, Schuyler	67 Maple St., Coventry
Fairhurst, Susan	2 Sherwood Pl., Johnston	Pinsonneault, Joan	Stillwater Rd., Georgeville
Farmer, Karen	55 Atlantic Ave., Providence	Pitocchelli, Louise	39 Zella St., Providence
Fay, Patricia	15 Westwood Rd., Saylesville	Polofsky, Wilma	34 Pennsylvania Ave., Providence
Fenton, Norman	265 Webster Ave., Providence	Powers, Ruth	5 Geldard St., Valley Falls
Flynn, John	16 Batcheller Ave., Cranston	Proulx, Joan	19 Whitford Ave., Pawtucket
Fogarty, Eileen	81 Deborah Rd., Warwick	Quinn, Jane	4 Roanoke St., Providence
Foley, Mary Lou	44 Stillman Ave., Pawtucket	Quinn, Martha	181 Hedley Ave., Central Falls
Fontes, Jacquelyn	167 Brightbridge Ave., E. Providence	Records, Robert	131 California Ave., Providence
Fox, Earl	39 Main St., Oakland	Reposa, Joanne	35 East Knowlton St., Riverside
Friatiello, John	712 Atwells Ave., Providence	Robitaille, Patricia	137 Arnold St., Woonsocket
Frattarelli, Irene	276 Power Rd., Pawtucket	Rodgers, John	56 Ivy St., Providence
Fullam, Mark	365 Broadway, Providence	Ruthkiewicz, Anne	341 Metacom Ave., Warren
Gaucher, Martha	Harrisville	Ryan, Eileen	9 Plantation St., Greenwood
Gilroy, Carol	60 Riverfarm Rd., Cranston	Ryan, Louise	36 Jefferson Ave., Pawtucket
Grady, Marilyn	2426 Cranston St., Cranston	Santilli, Marie	797 Providence St., W. Warwick
Green, Roberta	1021 Smithfield Ave., Saylesville	Sanzen, Judith	59 Berkley St., Cranston
Guay, Elizabeth	118 Parnell St., Providence	Saunders, Judith	Post Road, Westerly
Gubala, Barbara	14 Empire St., Pawtucket	Schooley, Gerald	24 Bellvue Ave., Providence
Gurnick, Stanley	40 Reynolds Ave., Providence	Schultz, Kaaren	10 Becher Ave., Riverside
Harrison, William	76 Newfield Ave., Lakewood	Silvestri, Anna	26 Kimball St., Providence
Hart, Marcella	37 Seventh St., Providence	Slater, Edward	64 S. Atlantic Ave., Warwick
Hart, Marilyn	101 Lynch St., Providence	Smith, Joan	24 East Earle St., Lonsdale
Hartley, Marion	98 Agonn Ave., Warwick	Smith, Rosella	45 Ocean St., Providence
Healey, John	18 Alton St., Providence	Smith, Shirley	76 Colonial Ave., Warwick
Heeder, Charles	74 Berkley St., Providence	Smith, Sondra	127 Mitchell St., Providence
Heslin, Dorothy	413 Long St., Warwick	Solkoff, Carole	20 Forest St., Providence
Higgins, MaryAnn	15 Mifton Ave., Edgewood	Spacagna, Zelinda	52 Forbes St., Providence
Horan, Claire	R.I. Training School for Boys, Howard	Stanton, Margaret	10 Oneida St., Pawtucket
Hughes, Paula	1086 Smith St., Providence	Steiner, Gerry	1184 Smith St., Providence
Hughes, Brenda	23 Hawthorne Ave., Eden Park	Sweeney, Thomas	30 Kelley St., Providence
Jordan, Barbara	34 Providence St., W. Warwick	Talbot, Cynthia	1589 Main St., W. Warwick
Kaloostian, Mary-Ellen	75 Sorrento St., Providence	Taraborelli, Alfred	6 Leading St., Johnston
Kearns, Helen	404 River Ave., Providence	Taylor, Mary Alice	156 Wendell St., Providence
Keenan, Patricia	43 Auburn St., Pawtucket	Thompson, Kathryn	Ashaway
Kelly, Edward	125 Perrin Ave., Pawtucket	Tomasetti, Roberta	27 Woodbury St., Warwick
Kennedy, Pat	81 Kenyon Ave., E. Greenwich	Turbitt, Janet	56 Goff St., Rumford
Kofahl, Norma	11 Bluff St., Riverside	Vanni, Joseph	13 Kepler St., Providence
Lachapelle, Jacqueline	55 Harding St., W. Warwick	Venagro, Ann	39 Clematis St., Providence
Lambert, Joseph	Pine Ave., Coventry	Walsh, Carol	Mendon Rd. Cumberland Hill
Langton, Patricia	14 Brewster St., Providence	Welch, Dorothy	169 Narragansett Ave., Providence
Letendre, Carol	Pascoag	Wilkening, Brenda	15 Lorimer Ave., Providence
Louth, Jeanne	48 Riverfarm Rd., Cranston	Wilkinson, John	265 West Ave., Pawtucket
Lowy, Hedy	47 Salmon St., Providence	Wolslegel, Barbara	265 Groveland Ave., Warwick

CLASS OF 1961

Aceto, Gloria	624 Charles St., Providence	Alexander, Marcia	39 Bartlett Ave., Cranston
---------------	-----------------------------	-------------------	----------------------------



Atamian, Gary	20 Donelson St., Providence	Jeffrey, Robert	99 Bryant Rd., Cranston
Augusto, Carmen	210 Broad St., Valley Falls	Johnson, Tyrone	112 Pleasant St., Providence
Baker, Ann	40 Park St., Central Falls	Johnson, William	105 Mystic Dr., Warwick
Baldoni, Barbara	110 Legion Way, Cranston	Jordan, Raymond	300 High St., Valley Falls
Barry, Judith	143 Tenth St., Providence	Kelley, Judith	80 Prospect St., Pawtucket
Barry, Patricia	87 Rand St., Central Falls	Kinoian, Beverly	261 Benefit St., Pawtucket
Beauchemin, Denis	218 Second Ave., Woonsocket	Klenota, Elaine	47 Salmon St., Providence
Berwick, Kenneth	105 Windsor Rd., Pawtucket	Kuperman, Rosalie	148 Byfield St., Providence
Betts, Hazel E.	55 Collins St., So. Attleboro	LaBelle, Helen	17 Evaleen St., Central Falls
Bilotti, Barbara	615 Chalkstone Ave., Providence	Lamontagne, Normand	55 Kelly St., Sayersville
Binns, Catherine	34 Sawyer St., Providence	LaSalle, Kenneth	377 Hines Rd., Cumberland
Blau, Benita	13 Sessions St., Providence	Latham, Carolyn (Mrs.)	3 Lakecrest Dr., Warwick
Boggia, Eugenia	27 Ferris St., Pawtucket	Lopez, Rosalie	19 Lane St., No. Providence
Bousquet, Simone	323 So. Main St., Woonsocket	MacBeth, Janice	45 Dryden Blvd., Warwick
Boyajian, Margaret		MacDonald, George	RFD #1, B.247, No. Scit.
Boylan, Lawrence	22 Cherry St., Pawtucket	Magill, Catherine	2 Armistice Blvd. Pawtucket
Bradley, June	44 Gould St., Newport	Mahoney, Janet	207 Sutton Ave., E. Providence
Breslin, Catherine	178 Division St., Pawtucket	Malmberg, Rodney	340 Sharon St., Providence
Brousseau, Marie	6 Bloomingdale Ave., Pawtucket	Malo, Valerie	300 Chestnut St., Norwood
Buonanno, Concetta	25 Superior View Blvd., No. Providence	Mason, Sandra	16 Kingsford Ave., Riverside
Burdett, David	5 Elmore Ave., Centredale	Mastrobuono, Desdemona	44 Sycamore St., Providence
Burke, Ann	114 Hope St., Bristol	Mattias, Barbara	27 Edwards St., W. Warwick
Cairo, Elaine	22 Harold St., Providence	Maynard, Jean	164 Lafayette St., Pawtucket
Campanella, Nancy	74 Cathedral Ave., Providence	Mazzarella, Gerald	183 Carrington Ave., Woonsocket
Carr, Patricia	241 High St., Valley Falls	McAlevy, Anna	
Carty, Joan	70 Floral Park Blvd., Pawtucket	McConnell, Roberta	156 Cypress St., Providence
Case, Marcia	Pottersville Rd., Little Compton	McDermott, William	34 Edgemere Ave., Providence
Chaika, Barbara	157 Oak Hill Ave., Pawtucket	McDonald, Christine	168 Rebekah St., Woonsocket
Closterman, Donald	45 Angus St., W. Warwick	McDonnell, Ann	136 Olney Ave., N. Providence
Collins, Elizabeth	53 Harrison Ave., Newport	McGarrity, Joan	103 Summit St., Central Falls
Connor, Edward	212 Knotty Oak Rd., Anthony	McKiernan, Donald	121 Harriet St., Providence
Cook, Claire	53 Seventh St., East Providence	McKivergan, Mary	165 Grove Ave., E. Providence
Cooney, Elaine	85 Vaughn Ave., Warwick	McWeeny, Marie	208 Linwood Ave., Providence
Cooper, Robert	57 Harley St., West Warwick	Menatian, Steve	56 John St., Pawtucket
Costello, Marcia	168 Nelson St., Providence	Miller, Walter	133 Sinclair Ave., Providence
Cunha, Sandra	75 Scarborough Rd., Pawtucket	Montanaro, Barbara	156 Parade St., Providence
D'Agostino, Jean	16 May St., North Providence	Morgan, Thomas	63 Belmont Ave., Providence
Daignault, Andree	57 Liberty St., Pawcatuck	Munroe, Gail	75 Paine Ave., Cranston
Daily, Joyce	47 Bassett St., Providence	Murray, Linda	41 Miles Ave., E. Providence
Danko, Barbara	848 Third Ave., Woonsocket	Murray, Norma	23 Bolton St., Edgewood
Darling, Elaine	56 Abbott St., Providence	Neary, Susan	30 Granger Ct., Warwick
Dauray, Raymond	Box 140, Mendon Rd., Mariaville	Nelson, Lynne	35 Orchard St., Cranston
Davis, Elizabeth	143 Beach Ave., Warwick	Nerney, Agnes	36 Crowninshield St., Providence
Dawson, Ann	30 Tecumseh St., Providence	Nerney, Donna	687 Smith St., Providence
Day, Edward	65 Joslin St., Providence	O'Hearn, Barbara	126 Gray St., Providence
DeNuccio, Elizabeth	98 Wollaston St., Cranston	Oliver, Robert	27 Hawley St., Central Falls
DePari, Concetta	283 Mt. Pleasant Ave., Providence	O'Loughlin, Lynne	160 Country Club Dr., Warwick
Deradoorian, Joyce	1059 Main St., Pawtucket	Orsini, Alfred R., Jr.	57 Middle Dr., Providence
Desautell, Lucille	Chestnut Hill Rd., Chepachet	Orzechowicz, Frances	40 Central St., Manville
DiBasio, Pauline	135 River Ave., Providence	Padgett, Gloria	509 Buttonwoods Ave., Warwick
Dick, John	894½ Chalkstone Ave., Providence	Pailthorpe, Theresa	20 Braman St., Providence
Dickson, Andrew	Spring Lake, Harrisville	Paul, Elaine	12 Chapel St., Harrisville
DiFilippo, Carol	516 Woodward Rd., No. Providence	Petrarca, Janet	660 Rast Ave., Natick
Dilorio, Verena	78 Bradford St., Providence	Petrin, Gilda	36 Mumford St., W. Warwick
DiMuccio, Antonetta	4 Ellery St., Providence	Pierce, Frances	20 Pearce Ave., Riverside
Douglas, Richard	167 Longfellow St., Providence	Pitrono, Annette	13 Clyde St., Providence
Duffy, Kathleen	349 Grove St., Woonsocket	Plante, Ann	83 Pelletier Ave., Woonsocket
Durrell, Daureen	204 Early St., Providence	Plays, George	95 Huntington Ave., Woonsocket
Edwards, Jean	William St., Ashaway	Polofsky, Irma	34 Pennsylvania Ave., Providence
Egan, Barbara	38 Summit Ave., No. Smithfield	Reilly, Patricia	9 Canton St., Providence
Egan, Thomas	55 Brown Ave., No. Providence	Reynolds, Anne	55 Daniels St., Pawtucket
Ertlinger, Susan	129 Byfield St., Providence	Ricci, Carol	985 Charles St., No. Providence
Felber, Ronald	1077 Dexter St., Central Falls	Rinaldi, Edward J., Jr.	34 Central St., Bristol
Feldstein, Hope	546 Wayland Ave., Providence	Rosetta, Jane	80 Superior St., Providence
Fidrych, Josephine	61 Capron St., Providence	Ross, Patricia	157 Lafayette St., Pawtucket
Finelli, Adrianne	92 Gray St., Providence	Santos, Marie	111 Knight St., Providence
Flynn, Joan	95 Linwood Ave., Providence	Saunders, Patricia	32 Bacheller St., Newport
Fontaine, Jane	1020 Main St., Pawtucket	Silva, Roberta	114 Newport Ave., Pawtucket
Foster, Deborah	60 Cypress St., Providence	Skelly, Isabel	15 Rankin Ave., Providence
Fox, Mary	77 Armistice Blvd., Pawtucket	Smith, Bruce	261 Terrace Ave., Riverside
Frechette, Muriel	163 Unit St., Providence	Spillane, Richard	22 Mass. Ave., Warwick
Freda, Alexander	251 Washington Ave., Providence	Spinard, Frances	143 Hawkins St., Providence
Gagnon, Roberta	6 Huron St., Warwick	Steere, Roger	Tourtellotte Hill Rd., Chepachet
Gallant, Frances	35 Sterling St., Pawtucket	Stone, Gerald	1300 Narragansett Blvd., Cranston
Genereux, Bruce	129 Hanover Ave., Pawtucket	Stoyko, Judith	104 Avenue C, Woonsocket
Gill, Etta	72 Ives St., Hope	Taylor, Mary	63 Sylvia Ave., No. Providence
Gilmartin, Mary	1301 Narragansett Blvd., Edgewood	Trainor, Rosemary	37 Longwood Ave., Providence
Giuliano, Carol	587 Academy Ave., Providence	Tundis, Norma	1457 Plainfield St., Johnston
Greene, Roberta	294 Beckwith St., Cranston	Vanasse, Carole	12 Harmony St., W. Warwick
Griffin, Maureen	118 Washington Ave., Providence	Vendituoli, Thomas	80 Evans St., Newport
Gustafson, Lenore	3842 Main Rd., Tiverton	Viens, Robert	618 Warren Ave., E. Providence
Hadfield, Sarah	Main St., Slatersville	Walker, Richard	Mt. Pleasant Rd., Nasonville
Hammer, Margaret	41 Center St., Lonsdale	Walsh, Eleanor	770 Berkshire St., Providence
Hayden, Nancy		Waterman, Priscilla	Anawan St., Rehoboth
Holt, Elizabeth	74 Pembroke Ave., Providence	Wayland, Virginia	119 Bay Spring Ave., W. Barrington
Houlihan, Patricia	113 Arnold St., Providence	Wheeler, Catherine	408 Manton Ave., Providence
Howe, Merle	880 York Ave., Pawtucket	Williams, Frederick	9 Allerton Ave., E. Providence
Hunt, Joyce	34 England St., Lonsdale	Wrona, Marilyn	Bloomfield St., Pawtucket







